

Auction catalog

Title	Online Auction June 6, 2017 10AM Central
Description	The following line of Fertilizer, Farm Implement, Truck, Trailer & Construction Equipment will be sold online with the bidding ending on June 6, 2017. Location of the equipment is given. Bidding within the last minute before the closing of a lot will extend the bidding time by an additional minute. Be prepared to bid accordingly. For more information, contact Del Peterson & Associates: 419 West Judy Drive Fremont NE, 68025 Phone: 800-492-9090 or 402-721-4388 Fax: 402-721-4583 E-mail: auction@delpeterson.com
Date	Tue, Jun 6, 2017
Starts at	10:00 AM
Address	PO Box 654, Fremont, NE 68026 USA
Categories	

#1 - Injector Pump & Tank (PD313)

Injector Pump & Tank (PD313), used it very little on a dry fertilizer blender, Notes: Item Location: Fairfax, MO 64446 Equipment Sold "AS IS, WHERE IS": All equipment/property is sold "AS IS, WHERE IS" with no warranty or guarantees, expressed or implied, No operational assessments or testing have been made by Del Peterson on this item, it has been photographed ONLY.



#2 - John Deere Wheels 12 Bolt (PD312)

John Deere Wheels 12 Bolt (PD312), for flotation tires, off of sprayer. Notes: Item Location: Fairfax, MO 64446 Equipment Sold "AS IS, WHERE IS": All equipment/property is sold "AS IS, WHERE IS" with no warranty or guarantees, expressed or implied, No operational assessments or testing have been made by Del Peterson on this item, it has been photographed ONLY.



#3 - Pallet of Misc. Cylinders (NP4910)

Pallet of Misc. Cylinders (NP4910). Notes: Item Location: Walton, IN 46994 Equipment Sold "AS IS, WHERE IS": All equipment/property is sold "AS IS, WHERE IS" with no warranty or guarantees, expressed or implied, No operational assessments or testing have been made by Del Peterson on this item, it has been photographed ONLY.



#4 - Pallet of Misc. Cylinders (NP4911)

Pallet of Misc. Cylinders (NP4911). Notes: Item Location: Walton, IN 46994 Equipment Sold "AS IS, WHERE IS": All equipment/property is sold "AS IS, WHERE IS" with no warranty or guarantees, expressed or implied, No operational assessments or testing have been made by Del Peterson on this item, it has been photographed ONLY.



#5 - Pallet of Hydraulic Hoses/NH3 Equipment (NP4912)

Pallet of Hydraulic Hoses/NH3 Equipment (NP4912). Notes: Item Location: Walton, IN 46994 Equipment Sold "AS IS, WHERE IS": All equipment/property is sold "AS IS, WHERE IS" with no warranty or guarantees, expressed or implied, No operational assessments or testing have been made by Del Peterson on this item, it has been photographed ONLY.



#6 - Pallet of Pumps/Parts (NP4913)

Pallet of Pumps/Parts (NP4913). Notes: Item Location: Walton, IN 46994 Equipment Sold "AS IS, WHERE IS": All equipment/property is sold "AS IS, WHERE IS" with no warranty or guarantees, expressed or implied, No operational assessments or testing have been made by Del Peterson on this item, it has been photographed ONLY.



#7 - (2) Pallets of Small Motors (NP4924)

(2) Pallets of Small Motors (NP4924), seller believes most will run with some service required. Notes: Item Location: Walton, IN 46994 Equipment Sold "AS IS, WHERE IS": All equipment/property is sold "AS IS, WHERE IS" with no warranty or guarantees, expressed or implied, No operational assessments or testing have been made by Del Peterson on this item, it has been photographed ONLY.



#8 - Enclosed Fuel/Oil Pump System (NP4918)

Enclosed Fuel/Oil Pump System (NP4918), PTO pump hose reel, Neptune meter. Notes: Item Location: Walton, IN 46994 Equipment Sold "AS IS, WHERE IS": All equipment/property is sold "AS IS, WHERE IS" with no warranty or guarantees, expressed or implied, No operational assessments or testing have been made by Del Peterson on this item, it has been photographed ONLY.



#9 - (2) Truck Side Tool Boxes (NP4919)

(2) Truck Side Tool Boxes (NP4919), (1) 96" x 13", (1) 172" x 13", good condition, small dent on top of 72" box. Notes: Item Location: Walton, IN 46994 Equipment Sold "AS IS, WHERE IS": All equipment/property is sold "AS IS, WHERE IS" with no warranty or guarantees, expressed or implied, No operational assessments or testing have been made by Del Peterson on this item, it has been photographed ONLY.



#10 - Manure Pump (MH173)

Manure Pump (MH173), has a DODA pump. Notes: Pump has not be used for a long time, selling as parts/ scrap. Item Location: Anamosa, IA 52205 Equipment Sold "AS IS, WHERE IS": All equipment/property is sold "AS IS, WHERE IS" with no warranty or guarantees, expressed or implied, No operational assessments or testing have been made by Del Peterson on this item, it has been photographed ONLY.



#11 - Pallet of Concrete Additive Unit #2 (MH175)

Pallet of Concrete Additive Unit #2 (MH175), Norchem Densified Silica Fume concrete additive, pallet contains 50 bags. Notes: Link to website: <http://www.norchem.com/silica-fume-densified.html> Item Location: Anamosa, IA 52205 Equipment Sold "AS IS, WHERE IS": All equipment/property is sold "AS IS, WHERE IS" with no warranty or guarantees, expressed or implied, No operational assessments or testing have been made by Del Peterson on this item, it has been photographed ONLY.



#12 - Pallet of Concrete Additive Unit #1 (MH174)

Pallet of Concrete Additive Unit #1 (MH174), Norchem Densified Silica Fume concrete additive, pallet contains 50 bags. Notes: Link to website: <http://www.norchem.com/silica-fume-densified.html> Item Location: Anamosa, IA 52205 Equipment Sold "AS IS, WHERE IS": All equipment/property is sold "AS IS, WHERE IS" with no warranty or guarantees, expressed or implied, No operational assessments or testing have been made by Del Peterson on this item, it has been photographed ONLY.



#13 - 2006 International 9200i Day Cab (EG221)

2006 International 9200i Day Cab (EG221), Cummins ISM370 engine, Meritor 10 speed transmission, 3.73 rear end, air-ride, 181" wheelbase, single fuel tank, all aluminum wheels, 12,000# front, 40,000# rear, scuff on front left fender but otherwise a very nice farmer owned truck, shows shows 605,852 miles. Notes: Item Location: Moorland, IA 50566 Equipment Sold "AS IS, WHERE IS": All equipment/property is sold "AS IS, WHERE IS" with no warranty or guarantees, expressed or implied, No operational assessments or testing have been made by Del Peterson on this item, it has been photographed ONLY.



#14 - MultiApplier Ready Dry Box Rear Gate (NP4920)

MultiApplier Ready Dry Box Rear Gate (NP4920), off New Leader L4000 G4 dry box. Notes: Item Location: Walton, IN 46994 Equipment Sold "AS IS, WHERE IS": All equipment/property is sold "AS IS, WHERE IS" with no warranty or guarantees, expressed or implied, No operational assessments or testing have been made by Del Peterson on this item, it has been photographed ONLY.



#15 - (2) Poly Flat Bottom Liquid Tanks (NP4914)

(2) Poly Flat Bottom Liquid Tanks (NP4914), 2,500 gallon capacity each. Notes: Item Location: Walton, IN 46994 Equipment Sold "AS IS, WHERE IS": All equipment/property is sold "AS IS, WHERE IS" with no warranty or guarantees, expressed or implied, No operational assessments or testing have been made by Del Peterson on this item, it has been photographed ONLY.



#16 - (12) Poly Shuttle Tanks (NP4915)

(12) Poly Shuttle Tanks (NP4915), 250 gallon capacity each. Notes: Item Location: Walton, IN 46994 Equipment Sold "AS IS, WHERE IS": All equipment/property is sold "AS IS, WHERE IS" with no warranty or guarantees, expressed or implied, No operational assessments or testing have been made by Del Peterson on this item, it has been photographed ONLY.



#17 - (9) Poly Shuttle Tanks (NP4916)

(9) Poly Shuttle Tanks (NP4916), 120 gallon capacity each. Notes: Item Location: Walton, IN 46994 Equipment Sold "AS IS, WHERE IS": All equipment/property is sold "AS IS, WHERE IS" with no warranty or guarantees, expressed or implied, No operational assessments or testing have been made by Del Peterson on this item, it has been photographed ONLY.



#18 - Defco 7200 Pump (NP4917)

Defco 7200 Pump (NP4917). Notes: Item Location: Walton, IN 46994 Equipment Sold "AS IS, WHERE IS": All equipment/property is sold "AS IS, WHERE IS" with no warranty or guarantees, expressed or implied, No operational assessments or testing have been made by Del Peterson on this item, it has been photographed ONLY.



#19 - Set of Floater Row Crop Tires/Rims (NP4922)

Set of Floater Row Crop Tires/Rims (NP4922), 380/85R46 rear, 230/85R34 fronts, 35-40% tread. Notes: Item Location: Walton, IN 46994 Equipment Sold "AS IS, WHERE IS": All equipment/property is sold "AS IS, WHERE IS" with no warranty or guarantees, expressed or implied, No operational assessments or testing have been made by Del Peterson on this item, it has been photographed ONLY.



#20 - Set of Floater Row Crop Tires/Rims (NP4923)

Set of Floater Row Crop Tires/Rims (NP4923), 380/85R46 rear, 230/85R34 fronts, 35-40% tread. Notes: Item Location: Walton, IN 46994 Equipment Sold "AS IS, WHERE IS": All equipment/property is sold "AS IS, WHERE IS" with no warranty or guarantees, expressed or implied, No operational assessments or testing have been made by Del Peterson on this item, it has been photographed ONLY.



#21 - 2006 Dodge Ram 2500 Pickup (PZ6305)

2006 Dodge Ram 2500 Pickup (PZ6305), 4x4, Hemi 5.7L gas engine, automatic transmission, air conditioning, heat, Am/Fm radio, cruise control, power windows & locks, running boards, ag hitch, tires @ 30%, shows 186,136 miles, Unit# 11706. Notes: PLEASE ALLOW AT LEAST 60 DAYS FOR TITLE TRANSFER. Item Location: Creston, IA 50801 Equipment Sold "AS IS, WHERE IS": All equipment/property is sold "AS IS, WHERE IS" with no warranty or guarantees, expressed or implied, No operational assessments or testing have been made by Del Peterson on this item, it has been photographed ONLY.



#22 - 2003 Dodge Ram 2500 Pickup (PZ6306)

2003 Dodge Ram 2500 Pickup (PZ6306), 4x4, Hemi 5.7L gas engine, automatic transmission, heat, Am/Fm radio, running boards, ag hitch, tires @ 30%, shows 168,671 miles, Unit# 10350. Notes: PLEASE ALLOW AT LEAST 60 DAYS FOR TITLE TRANSFER. New crate motor 2 years ago, Needs tranny-will not move. Please call seller for more information. Item Location: Creston, IA 50801 Equipment Sold "AS IS, WHERE IS": All equipment/property is sold "AS IS, WHERE IS" with no warranty or guarantees, expressed or implied, No operational assessments or testing have been made by Del Peterson on this item, it has been photographed ONLY.



#23 - 2007 Mercedes Benz C280 4 Matic (TR3453)

2007 Mercedes Benz C280 4 Matic (TR3453), V6 gas engine, automatic transmission, leather interior, heated seats, power seats, power locks, Keyless entry, Heat, AC, AM/FM CD radio, Steering wheel controls, sun roof, 4 door sedan, floor mats, climate control, 132,290 miles. Notes: Very Clean. Item Location: Fremont, NE 68025 Equipment Sold "AS IS, WHERE IS": All equipment/property is sold "AS IS, WHERE IS" with no warranty or guarantees, expressed or implied, No operational assessments or testing have been made by Del Peterson on this item, it has been photographed ONLY.



#24 - 1999 Mercury Sable LS Sedan (TR3453)

1999 Mercury Sable LS Sedan (TR3453), gas engine, 4 door, automatic transmission, power windows, power locks, heat/ac, AM/FM Cassette, cloth interior, 147,479 miles. Notes: Minor rust in pictures. Item Location: Fremont, NE 68025 Equipment Sold "AS IS, WHERE IS": All equipment/property is sold "AS IS, WHERE IS" with no warranty or guarantees, expressed or implied, No operational assessments or testing have been made by Del Peterson on this item, it has been photographed ONLY.



#28 - Pro Ag Hay Hiker (NJP225)

Pro Ag Hay Hiker (NJP225), Model 1400, the 1400 model easily handles (18) 48" bales, (14) 60" bales or (12) large 72" bales, 11L-15 tires. Notes: Item Location: Sterling, CO 80751 Equipment Sold "AS IS, WHERE IS": All equipment/property is sold "AS IS, WHERE IS" with no warranty or guarantees, expressed or implied, No operational assessments or testing have been made by Del Peterson on this item, it has been photographed ONLY.



#29 - 1995 Mack CH613 Liquid Tender Truck (PZ6302)

1995 Mack CH613 Liquid Tender Truck (PZ6302), diesel engine, 9 speed transmission, air conditioning, heat, Am/Fm radio, tandem axle, full screw, air ride suspension, 3500 gallon stainless steel liquid nurse tank, 295/75R22.5 tires, shows 254,414 miles, Unit# 11506. Notes: PLEASE ALLOW AT LEAST 60 DAYS FOR TITLE TRANSFER. Item Location: Sidney, IL 61877 Equipment Sold "AS IS, WHERE IS": All equipment/property is sold "AS IS, WHERE IS" with no warranty or guarantees, expressed or implied, No operational assessments or testing have been made by Del Peterson on this item, it has been photographed ONLY.



#30 - Doyle Dry Tender Box (PZ6303)

Doyle Dry Tender Box (PZ6303), Doyle 16 ton 2 compartment dry tender box, rear discharge auger, all hydraulic, roll over tarp. Notes: Running gear NOT included. Item Location: Sidney, IL 61877 Equipment Sold "AS IS, WHERE IS": All equipment/property is sold "AS IS, WHERE IS" with no warranty or guarantees, expressed or implied, No operational assessments or testing have been made by Del Peterson on this item, it has been photographed ONLY.



#31 - 2004 Corn Pro Gooseneck Trailer (NP4921)

2004 Corn Pro Gooseneck Trailer (NP4921), Model 18+5 7K, approx. 18' long x 5' wide, tandem axle, spring suspension, wood deck, ramps, electric brakes, GVWR 14,000lbs. Notes: Item Location: Auburn, IL 62615 Equipment Sold "AS IS, WHERE IS": All equipment/property is sold "AS IS, WHERE IS" with no warranty or guarantees, expressed or implied, No operational assessments or testing have been made by Del Peterson on this item, it has been photographed ONLY.



#32 - New Leader Ag Leader Insight Controller (NP4925)

New Leader Ag Leader Insight Controller (NP4925), wiring and input modules, removed from Terra Gator Dry Floater, VRT capable, working order when removed from machine. Notes: Item Location: Walton, IN 46994 Equipment Sold "AS IS, WHERE IS": All equipment/property is sold "AS IS, WHERE IS" with no warranty or guarantees, expressed or implied, No operational assessments or testing have been made by Del Peterson on this item, it has been photographed ONLY.



#33 - 1992 Crownline Model 180

1992 Crownline Model 180, V-6 4.3 Litre LX Engine, Approx. 200 Hours on the Alpha One Lower Drive Unit, 21" & 23" Pitch Props, Full Instrument Panel, All Gauges Work, Built in Depth Finder, Custom Bimini Top, Electric fuel Pump for Easier Starts, SE Sport 300 Whale Tale, Built in Ice Chest, Jensen CD-AM-FM Radio, Eagle Ultra Classic fish finder, 2002 Shore Lander Trailer, Shows 457 Hours. Notes: Item Location: Oakland, NE 68045 Equipment Sold "AS IS, WHERE IS": All equipment/property is sold "AS IS, WHERE IS" with no warranty or guarantees, expressed or implied, No operational assessments or testing have been made by Del Peterson on this item, it has been photographed ONLY.



#34 - 2010 Spra-Coupe 4460 Sprayer (TR3451)

2010 Spra-Coupe 4460 Sprayer (TR3451), diesel engine, hydrostat transmission, heat/ac, AM/FM CD, Approx. hrs. 2500 (still in use). Raven 440 monitor. 60/80 heavy booms. Has a 2010 B&B trailer. Notes: Item Location: Leona, KS 66532 Equipment Sold "AS IS, WHERE IS": All equipment/property is sold "AS IS, WHERE IS" with no warranty or guarantees, expressed or implied, No operational assessments or testing have been made by Del Peterson on this item, it has been photographed ONLY.



#36 - 2013 Case Windrower (NJP229)

2013 Case Windrower (NJP229), Model WD1903, diesel engine, hydrostatic transmission, cab, heat, air conditioning, Am/Fm radio, RD163 cutting head, 580/70R26 front tires, 14L-16 swivel rear tires, Donaldson top spin. Notes: Item Location: Sterling, CO 80751 Equipment Sold "AS IS, WHERE IS": All equipment/property is sold "AS IS, WHERE IS" with no warranty or guarantees, expressed or implied, No operational assessments or testing have been made by Del Peterson on this item, it has been photographed ONLY.



#37 - 2009 GMC 2500HD Crew Cab (PZ6321)

2009 GMC 2500HD Crew Cab (PZ6321), Sierra SLT 4x4, gas engine, automatic transmission, air conditioning, heat, Am/Fm radio, cruise control, power windows & locks, power drivers seat, sun roof, running boards, 5th wheel ball, shows 170,725 miles. Notes: Item Location: Willcox, AZ 85643 Equipment Sold "AS IS, WHERE IS": All equipment/property is sold "AS IS, WHERE IS" with no warranty or guarantees, expressed or implied, No operational assessments or testing have been made by Del Peterson on this item, it has been photographed ONLY.



#38 - Kraus Conveyor (PZ6316)

Kraus Conveyor (PZ6316), Kraus dry conveyor, self contained, electric start gas engine, portable, ST205/75R15 tires. Notes: Item Location: Willcox, AZ 85643 Equipment Sold "AS IS, WHERE IS": All equipment/property is sold "AS IS, WHERE IS" with no warranty or guarantees, expressed or implied, No operational assessments or testing have been made by Del Peterson on this item, it has been photographed ONLY.



#39 - Bale Spear (PZ6310)

Bale Spear (PZ6310), Bale Spear. Notes: Item Location: Willcox, AZ 85643 Equipment Sold "AS IS, WHERE IS": All equipment/property is sold "AS IS, WHERE IS" with no warranty or guarantees, expressed or implied, No operational assessments or testing have been made by Del Peterson on this item, it has been photographed ONLY.



#40 - John Deere 612C Corn Head (PZ6315)

John Deere 612C Corn Head (PZ6315), John Deere 612C 12 row corn head. Notes: Head trailer is NOT included. Item Location: Willcox, AZ 85643 Equipment Sold "AS IS, WHERE IS": All equipment/property is sold "AS IS, WHERE IS" with no warranty or guarantees, expressed or implied, No operational assessments or testing have been made by Del Peterson on this item, it has been photographed ONLY.



#41 - 2014 Case Round Baler (NJP230)

2014 Case Round Baler (NJP230), Model RB565, PTO, hydraulic, net wrap, 21.5L-16L tires, hydraulic pickup lift. Notes: Item Location: Sterling, CO 80751 Equipment Sold "AS IS, WHERE IS": All equipment/property is sold "AS IS, WHERE IS" with no warranty or guarantees, expressed or implied, No operational assessments or testing have been made by Del Peterson on this item, it has been photographed ONLY.



#43 - Servis Blade (PZ6309)

Servis Blade (PZ6309) Servis R1400 hydraulic blade, hydraul tilt and shift, 3 point. Notes: Item Location: Willcox, AZ 85643 Equipment Sold "AS IS, WHERE IS": All equipment/property is sold "AS IS, WHERE IS" with no warranty or guarantees, expressed or implied, No operational assessments or testing have been made by Del Peterson on this item, it has been photographed ONLY.



#44 - SWECO Land Plane (PZ6313)

SWECO Land Plane (PZ6313) SWECO landplane, 40', 18' wide, hydraulic lift, 11L-15FI flotation tires. Notes: Item Location: Willcox, AZ 85643 Equipment Sold "AS IS, WHERE IS": All equipment/property is sold "AS IS, WHERE IS" with no warranty or guarantees, expressed or implied, No operational assessments or testing have been made by Del Peterson on this item, it has been photographed ONLY.



#45 - Unverferth Ripper (PZ6311)

Unverferth Ripper (PZ6311), Unverferth Zone Builder model 130 ripper, 5 shank, 3-point. Notes: Item Location: Willcox, AZ 85643 Equipment Sold "AS IS, WHERE IS": All equipment/property is sold "AS IS, WHERE IS" with no warranty or guarantees, expressed or implied, No operational assessments or testing have been made by Del Peterson on this item, it has been photographed ONLY.



#48 - 2014 Case Puma Tractor (NJP228)

2014 Case Puma Tractor (NJP228), Model 200CV, diesel engine, power shuttle transmission, cab, heat, air conditioning, Am/Fm radio, leather seat, front weight rack/weights, 80R46 rear tires, 85R34 front tires, 4 port hydraulics, PTO, 3 point hitch, low time - only 430 hours. Notes: Item Location: Sterling, CO 80751 Equipment Sold "AS IS, WHERE IS": All equipment/property is sold "AS IS, WHERE IS" with no warranty or guarantees, expressed or implied, No operational assessments or testing have been made by Del Peterson on this item, it has been photographed ONLY.



#50 - Maurer Head Trailer (PZ6318)

Maurer Head Trailer (PZ6318), Maurer header trailer, 9.5L-15FI tires. Notes: NO TITLE. Item Location: Willcox, AZ 85643 Equipment Sold "AS IS, WHERE IS": All equipment/property is sold "AS IS, WHERE IS" with no warranty or guarantees, expressed or implied, No operational assessments or testing have been made by Del Peterson on this item, it has been photographed ONLY.



#51 - Cat Forks (PZ6319)

Cat Forks (PZ6319), Cat 6W-8832 quick tach pallet forks. Notes: Backhoe NOT included, forks only. Item Location: Willcox, AZ 85643 Equipment Sold "AS IS, WHERE IS": All equipment/property is sold "AS IS, WHERE IS" with no warranty or guarantees, expressed or implied, No operational assessments or testing have been made by Del Peterson on this item, it has been photographed ONLY.



#52 - 2010 Chevrolet 1500 Crew Cab (PZ6322)

2010 Chevrolet 1500 Crew Cab (PZ6322), Silverado LT 4x4, gas engine, automatic transmission, air conditioning, heat, Am/Fm CD stereo, cruise control, power windows & locks, running boards, shows 136,262 miles. Notes: Item Location: Willcox, AZ 85643 Equipment Sold "AS IS, WHERE IS": All equipment/property is sold "AS IS, WHERE IS" with no warranty or guarantees, expressed or implied, No operational assessments or testing have been made by Del Peterson on this item, it has been photographed ONLY.



#54 - Steel Hopper Stand (NP4935)

Steel Hopper Stand (NP4935), ladder, side platform, adjustable stands, open bottom. Notes: Item Location: Canby, MN 56220 Equipment Sold "AS IS, WHERE IS": All equipment/property is sold "AS IS, WHERE IS" with no warranty or guarantees, expressed or implied, No operational assessments or testing have been made by Del Peterson on this item, it has been photographed ONLY.



#55 - Friesen Bulk Tank (NP4926)

Friesen Bulk Tank (NP4926), 6 leg stands, ladder. Notes: Item Location: Canby, MN 56220 Equipment Sold "AS IS, WHERE IS": All equipment/property is sold "AS IS, WHERE IS" with no warranty or guarantees, expressed or implied, No operational assessments or testing have been made by Del Peterson on this item, it has been photographed ONLY.



#56 - Friesen Bulk Tank (NP4927)

Friesen Bulk Tank (NP4927), 6 leg stands, ladder. Notes: Item Location: Canby, MN 56220 Equipment Sold "AS IS, WHERE IS": All equipment/property is sold "AS IS, WHERE IS" with no warranty or guarantees, expressed or implied, No operational assessments or testing have been made by Del Peterson on this item, it has been photographed ONLY.



#57 - Hopper Stand (NP4942)

Hopper Stand (NP4942), poly lined, forklift brackets, DB40-00109. Notes: Item Location: Canby, MN 56220 Equipment Sold "AS IS, WHERE IS": All equipment/property is sold "AS IS, WHERE IS" with no warranty or guarantees, expressed or implied, No operational assessments or testing have been made by Del Peterson on this item, it has been photographed ONLY.



#58 - 2014 R&R Mfg. Drum Blender (NP4943)

2014 R&R Mfg. Drum Blender (NP4943), 8 ton capacity, stainless steel, electric motor, S/N 4199, R&R Mfg. stainless steel hopper, discharge conveyor, 24" belt, electric motor, digital readout scale, S/N 002182, R&R Mfg. stainless steel loadout conveyor, 37' length x 24" belt, stationary, electric motor. Notes: This dry blender will be dismantled and removed and ready for loading. Loading and transportation is at the expense, risk and liability of the buyer. Item Location: Canby, MN 56220 Equipment Sold "AS IS, WHERE IS": All equipment/property is sold "AS IS, WHERE IS" with no warranty or guarantees, expressed or implied, No operational assessments or testing have been made by Del Peterson on this item, it has been photographed ONLY.



#59 - Liquid Manifold System (NP4930)

Liquid Manifold System (NP4930), stainless steel, enclosed on stands, Endress+Hauser flowmeter, 85-260VAC, 15VA/W, 50-60Hz, (S/N K4083616000), start/stop controls, MID:COM Model MCR-05 register (S/N 7107), EPSON ticket printer, Model M66SA, (S/N J9KF136807). Notes: Item Location: Canby, MN 56220 Equipment Sold "AS IS, WHERE IS": All equipment/property is sold "AS IS, WHERE IS" with no warranty or guarantees, expressed or implied, No operational assessments or testing have been made by Del Peterson on this item, it has been photographed ONLY.



#61 - Stainless Steel Liquid Storage Tank (NP4931)

Stainless Steel Liquid Storage Tank (NP4931), approx. 1,200 gallon capacity, on stands, ladder, Tank #1. Notes: Item Location: Canby, MN 56220 Equipment Sold "AS IS, WHERE IS": All equipment/property is sold "AS IS, WHERE IS" with no warranty or guarantees, expressed or implied, No operational assessments or testing have been made by Del Peterson on this item, it has been photographed ONLY.



#62 - Stainless Steel Liquid Storage Tank (NP4932)

Stainless Steel Liquid Storage Tank (NP4932), approx. 1,200 gallon capacity, on stands, ladder, Tank #3. Notes: Item Location: Canby, MN 56220 Equipment Sold "AS IS, WHERE IS": All equipment/property is sold "AS IS, WHERE IS" with no warranty or guarantees, expressed or implied, No operational assessments or testing have been made by Del Peterson on this item, it has been photographed ONLY.



#63 - Meridian Stainless Steel Liquid Storage Tank (NP4933)

Meridian Stainless Steel Liquid Storage Tank (NP4933), approx. 2,500 gallon capacity, on stands. Notes: Item Location: Canby, MN 56220 Equipment Sold "AS IS, WHERE IS": All equipment/property is sold "AS IS, WHERE IS" with no warranty or guarantees, expressed or implied, No operational assessments or testing have been made by Del Peterson on this item, it has been photographed ONLY.



#64 - Stainless Steel Liquid Storage Tank (NP4934)

Stainless Steel Liquid Storage Tank (NP4934), approx. 1,500 gallon capacity, on stands, ladder, Tank #4. Notes: Item Location: Canby, MN 56220 Equipment Sold "AS IS, WHERE IS": All equipment/property is sold "AS IS, WHERE IS" with no warranty or guarantees, expressed or implied, No operational assessments or testing have been made by Del Peterson on this item, it has been photographed ONLY.



#65 - Stainless Steel Liquid Storage Tank (NP4936)

Stainless Steel Liquid Storage Tank (NP4936), 1,200 gallon capacity, on stands, Tank #2. Notes: Item Location: Canby, MN 56220 Equipment Sold "AS IS, WHERE IS": All equipment/property is sold "AS IS, WHERE IS" with no warranty or guarantees, expressed or implied, No operational assessments or testing have been made by Del Peterson on this item, it has been photographed ONLY.



#67 - Fiberglass Liquid Storage Tank (NP4928)

Design Tanks Fiberglass Liquid Storage Tank (NP4928), approx. 22,000 gallon capacity, manhole. Notes: Item Location: Canby, MN 56220 Equipment Sold "AS IS, WHERE IS": All equipment/property is sold "AS IS, WHERE IS" with no warranty or guarantees, expressed or implied, No operational assessments or testing have been made by Del Peterson on this item, it has been photographed ONLY.



#68 - Schlager Stainless Steel Fertilizer Leg (NP4945)

Schlager Stainless Steel Fertilizer Leg (NP4945), approx. 35' height, 26" x 14" trunk, approx. 10" cups, top platform, Dodge TA1107H drive, Leeson 5HP 3 phase electric motor, ladder cage, w/ stainless steel auger, Leeson electric motor. Notes: This leg has been dismantled and removed and is ready for loading. Loading and transportation is at the expense, risk and liability of the buyer. Item Location: Canby, MN 56220 Equipment Sold "AS IS, WHERE IS": All equipment/property is sold "AS IS, WHERE IS" with no warranty or guarantees, expressed or implied, No operational assessments or testing have been made by Del Peterson on this item, it has been photographed ONLY.



#69 - 2013 John Deere S680 Combine (NP4948)

2013 John Deere S680 Combine (NP4948), John Deere diesel engine, pro drive, premium cab, lights, heat, air conditioning, Am/Fm CD radio, touch screen, deep tooth, long auger, side hill performance package, ext wear package, powercast tailboard, wide space tube radiator, Goodyear 650/85R38 front duals, Goodyear 28LR26 rear tires, shows 1,136 engine hours, shows 723 separator hours. Click Here For Video Notes: Item Location: Pender, NE 68047 Equipment Sold "AS IS, WHERE IS": All equipment/property is sold "AS IS, WHERE IS" with no warranty or guarantees, expressed or implied, No operational assessments or testing have been made by Del Peterson on this item, it has been photographed ONLY.



#70 - 2017 Wilson Tri Axle Grain Trailer (PZ6333)

2017 Wilson Tri Axle Grain Trailer (PZ6333), 2017 Wilson Commander model DWH-650CB 50' aluminum hopper bottom grain trailer, ag hoppers, tandem axle, rear lift axle, air ride suspension, front & rear ladder, 2 rows of lights, Bridgestone 11R24.5 tires, outer & inner aluminum rims, Lock Down electric roll over tarp, Unit# 101. Notes: Item Location: Monticello, IA 52310 Equipment Sold "AS IS, WHERE IS": All equipment/property is sold "AS IS, WHERE IS" with no warranty or guarantees, expressed or implied, No operational assessments or testing have been made by Del Peterson on this item, it has been photographed ONLY.



#71 - Fiberglass Liquid Storage Tank (NP4929)

Design Tanks Fiberglass Liquid Storage Tank (NP4929), approx. 22,000 gallon capacity, manhole. Notes: Item Location: Canby, MN 56220 Equipment Sold "AS IS, WHERE IS": All equipment/property is sold "AS IS, WHERE IS" with no warranty or guarantees, expressed or implied, No operational assessments or testing have been made by Del Peterson on this item, it has been photographed ONLY.



#72 - Aluminum Liquid Storage Tank (NP4939)

Aluminum Liquid Storage Tank (NP4939), Allied Chemical Corporation, on skids. Notes: Item Location: Canby, MN 56220 Equipment Sold "AS IS, WHERE IS": All equipment/property is sold "AS IS, WHERE IS" with no warranty or guarantees, expressed or implied, No operational assessments or testing have been made by Del Peterson on this item, it has been photographed ONLY.



#73 - Liquid Im-pregnation System (NP4944)

Liquid Im-pregnation System (NP4944), platform scale, 16 gallon poly cone bottom inductor tank, stands, electric motor, Hypro pump, digital scale readout, (2) Tuthill Sotera Systems Series 400B diaphragm transfer pump. Notes: Item Location: Canby, MN 56220 Equipment Sold "AS IS, WHERE IS": All equipment/property is sold "AS IS, WHERE IS" with no warranty or guarantees, expressed or implied, No operational assessments or testing have been made by Del Peterson on this item, it has been photographed ONLY.



#74 - USC LP800 Seed Treater (NP4941)

USC LP800 Seed Treater (NP4941), seed wheel, 30 gallon stainless steel mix tank, calibration tube, seed wheel control board, master control board, inlet/outlet conveyor ports, (2) Easy-Load II MasterFlex Model 77200-52, seed treatment calibrate, inoculant calibrate, 5 gallon poly tank, Zero Flow Meter Totalizer. Notes: Item Location: Canby, MN 56220 Equipment Sold "AS IS, WHERE IS": All equipment/property is sold "AS IS, WHERE IS" with no warranty or guarantees, expressed or implied, No operational assessments or testing have been made by Del Peterson on this item, it has been photographed ONLY.



#75 - 1996 Timpte Grain Trailer (KMK1005)

1996 Timpte Grain Trailer (KMK1005), spring ride, 11R 24.5, stands don't work, tarp is 2 years old, Shur-Lok tarp, new cross numbers 2 years ago, breaks between 40-50%. Notes: Item Location: Allison, IA 50602 Equipment Sold "AS IS, WHERE IS": All equipment/property is sold "AS IS, WHERE IS" with no warranty or guarantees, expressed or implied, No operational assessments or testing have been made by Del Peterson on this item, it has been photographed ONLY.



#76 - New Leader 3220 Multi-Applier Insert (EG225)

New Leader 3220 Multi-Applier Insert (EG225), 304 stainless, belt over chain. Notes: Item Location: Madelia, MN 56062 Equipment Sold "AS IS, WHERE IS": All equipment/property is sold "AS IS, WHERE IS" with no warranty or guarantees, expressed or implied, No operational assessments or testing have been made by Del Peterson on this item, it has been photographed ONLY.



#77 - Wet System off a 2008 John Deere 4930 (EG224)

Wet System off a 2008 John Deere 4930 (EG224), 120' boom, 5-way nozzle bodies, 20" spacing, boom trac, 1200 gallon tank, removed to put dry system on. Notes: Item Location: Madelia, MN 56062 Equipment Sold "AS IS, WHERE IS": All equipment/property is sold "AS IS, WHERE IS" with no warranty or guarantees, expressed or implied, No operational assessments or testing have been made by Del Peterson on this item, it has been photographed ONLY.



#78 - 2011 John Deere 635F Hydraflex Header (NP4950)

2011 John Deere 635F Hydraflex Header (NP4950), 35' flexible platform, 4 sections, CM, auger with full width fingers. Notes: Item Location: Pender, NE 68047 Equipment Sold "AS IS, WHERE IS": All equipment/property is sold "AS IS, WHERE IS" with no warranty or guarantees, expressed or implied, No operational assessments or testing have been made by Del Peterson on this item, it has been photographed ONLY.



#79 - 1968 Flint Steel NH3 Storage Tank (PZ6308)

1968 Flint Steel NH3 Storage Tank (PZ6308), 1968 Flint Steel 30,000 gallon NH3 storage tank, data plate, Magnetel tank volume gauge, Marathon 10 hp motor, Corken pump, concrete saddles, National Board# 54273. Notes: This tank must be removed by August 1, 2017 with NO exceptions. Dismantle, removal and transportation is at the expense, risk and liability of the buyer. Item Location: Henderson, NE 68371 Equipment Sold "AS IS, WHERE IS": All equipment/property is sold "AS IS, WHERE IS" with no warranty or guarantees, expressed or implied, No operational assessments or testing have been made by Del Peterson on this item, it has been photographed ONLY.



#80 - Tyler Dry Tender Box (PZ6307)

Tyler Dry Tender Box (PZ6307), Tyler 16 ton dry tender box, side discharge auger, all hydraulic, roll over tarp. Notes: Needs bottom auger. Running gear NOT included. Item Location: Creston, IA 50801 Equipment Sold "AS IS, WHERE IS": All equipment/property is sold "AS IS, WHERE IS" with no warranty or guarantees, expressed or implied, No operational assessments or testing have been made by Del Peterson on this item, it has been photographed ONLY.



#81 - USC Seed Conveyor (NP4938)

USC Seed Conveyor (NP4938), Model 2520 Seed Series, 25' length, 20" ribbed belt, Leeson 5HP 230V single phase electric motor, portable, ST205/75D15 tires. Notes: Item Location: Canby, MN 56220 Equipment Sold "AS IS, WHERE IS": All equipment/property is sold "AS IS, WHERE IS" with no warranty or guarantees, expressed or implied, No operational assessments or testing have been made by Del Peterson on this item, it has been photographed ONLY.



#82 - Ranco Fertilizing Blending System # 05 Control Panel (PD182)

Ranco Fertilizing Blending System # 05 Control Panel (PD182), extra blending control box, HP max is 12, 100 amp, unit has been in storage the last 4 years. Notes: Item Location: Glyndon, MN 56547 Equipment Sold "AS IS, WHERE IS": All equipment/property is sold "AS IS, WHERE IS" with no warranty or guarantees, expressed or implied, No operational assessments or testing have been made by Del Peterson on this item, it has been photographed ONLY.



#83 - Summers Rolling Baskets (MH178)

Summers Rolling Baskets (MH178), (2) 10ft sections of summers rolling baskets, has built in mud scrapers which can be raised in wet conditions, will mount to any square tube frame, will work on rippers or field cultivators, mounting hardware included. Notes: Seller can help load. Item Location: Butterfield, MN 56120 Equipment Sold "AS IS, WHERE IS": All equipment/property is sold "AS IS, WHERE IS" with no warranty or guarantees, expressed or implied, No operational assessments or testing have been made by Del Peterson on this item, it has been photographed ONLY.



#84 - 2008 Peterbilt 386 (PD320)

2008 Peterbilt 386 (PD320), ISX Cummins, 10 speed, 70 inch unibuilt sleeper, 235 Wheelbase, 3.36 rear end, 11R 22.5, service and maintenance records available, shows 965,000 miles. Notes: Item Location: Sanborn, IA 51248 Equipment Sold "AS IS, WHERE IS": All equipment/property is sold "AS IS, WHERE IS" with no warranty or guarantees, expressed or implied, No operational assessments or testing have been made by Del Peterson on this item, it has been photographed ONLY.



#85 - 1996 International 2674 (MH171)

1996 International 2674 (MH171), DT 530-300HP engine, 10 Speed, AM/FM, day cab, 244" WB, tandem axle, 18,000 front, 40,000 rears, double frame, aluminum wheels, shows 138,980 miles. Notes: Actual Mileage Unknown. Item Location: Rochester, MN 55906 Equipment Sold "AS IS, WHERE IS": All equipment/property is sold "AS IS, WHERE IS" with no warranty or guarantees, expressed or implied, No operational assessments or testing have been made by Del Peterson on this item, it has been photographed ONLY.



#86 - Chandler Stainless Steel Spreader Box (NP4946)

Chandler Stainless Steel Spreader Box (NP4946), 12' FTLH-EXW fertilizer & lime spreader bed, set up for float truck, 24" stainless steel mesh drag chain, 304 stainless steel construction, stainless steel spinner assembly, Agri-Cover SRT electric roll over tarp, Raven 660 controller. Notes: This bed was built in 2015 & has never been mounted to a truck, NEVER USED. Item Location: Boonville, MO 65233 Equipment Sold "AS IS, WHERE IS": All equipment/property is sold "AS IS, WHERE IS" with no warranty or guarantees, expressed or implied, No operational assessments or testing have been made by Del Peterson on this item, it has been photographed ONLY.



#87 - 2013 John Deere S680 Combine (NP4949)

2013 John Deere S680 Combine (NP4949), John Deere diesel engine, pro drive, premium cab, lights, heat, air conditioning, Am/Fm CD radio, multi-speed feederhouse, extended wear, 26' auger, powercast tailboard, cold start package, side hill performance package, wide space tube radiator, Goodyear 650/85R38 front duals, Goodyear 28LR26 rear tires, shows 1,038 engine hours, shows 691 separator hours. Click Here For Video Notes: Item Location: Pender, NE 68047 Equipment Sold "AS IS, WHERE IS": All equipment/property is sold "AS IS, WHERE IS" with no warranty or guarantees, expressed or implied, No operational assessments or testing have been made by Del Peterson on this item, it has been photographed ONLY.



#88 - 2017 Wilson Tri Axle Grain Trailer (PZ6334)

2017 Wilson Tri Axle Grain Trailer (PZ6334), 2017 Wilson Commander model DWH-650CB 50' aluminum hopper bottom grain trailer, ag hoppers, tandem axle, rear lift axle, air ride suspension, front & rear ladder, 2 rows of lights, Bridgestone 11R24.5 tires, outer & inner aluminum rims, Lock Down electric roll over tarp, Unit# 102. Notes: Item Location: Monticello, IA 52310 Equipment Sold "AS IS, WHERE IS": All equipment/property is sold "AS IS, WHERE IS" with no warranty or guarantees, expressed or implied, No operational assessments or testing have been made by Del Peterson on this item, it has been photographed ONLY.



#89 - 2003 Freightliner Columbia (MH172)

2003 Freightliner Columbia (MH172), 12.7 Detroit engine, 435HP, 10 speed, AM/FM radio, day cab, 176" WB, power windows, shows 669,547 miles. Notes: Item Location: Rochester, MN 55906 Equipment Sold "AS IS, WHERE IS": All equipment/property is sold "AS IS, WHERE IS" with no warranty or guarantees, expressed or implied, No operational assessments or testing have been made by Del Peterson on this item, it has been photographed ONLY.



#90 - USC Seed Conveyor (NP4940)

USC Seed Conveyor (NP4940), Model 2520 Seed Series, 25' length, 20" ribbed belt, Leeson 5HP 230V single phase electric motor, portable, ST205/75D15 tires, with manual. Notes: Item Location: Canby, MN 56220 Equipment Sold "AS IS, WHERE IS": All equipment/property is sold "AS IS, WHERE IS" with no warranty or guarantees, expressed or implied, No operational assessments or testing have been made by Del Peterson on this item, it has been photographed ONLY.



#91 - Blu-Jet 3 Point Anhydrous Toolbar (NP4619)

Blu-Jet 3 Point Anhydrous Toolbar (NP4619), 9 knife, 21' width, anhydrous coulters, P225/75R15 tires, CPS Unit #70712. Notes: Item Location: Chester, NE 68327 Equipment Sold "AS IS, WHERE IS": All equipment/property is sold "AS IS, WHERE IS" with no warranty or guarantees, expressed or implied, No operational assessments or testing have been made by Del Peterson on this item, it has been photographed ONLY.



#92 - Blu-Jet 3 Point Anhydrous Toolbar (NP4620)

Blu-Jet 3 Point Anhydrous Toolbar (NP4620), 9 knife, 21' width, anhydrous coulters, P225/75R15 tires, CPS Unit #91859. Notes: Item Location: Chester, NE 68327 Equipment Sold "AS IS, WHERE IS": All equipment/property is sold "AS IS, WHERE IS" with no warranty or guarantees, expressed or implied, No operational assessments or testing have been made by Del Peterson on this item, it has been photographed ONLY.



#93 - Anhydrous Pull Type Toolbar (NP4621)

Anhydrous Pull Type Toolbar (NP4621), 40' width, 27 knife, hydraulic wings, walking tandems, 11L-15 flotation tires, CPS Unit #92916, Unit #3044. Notes: This toolbar has 2 knives missing. Item Location: Chester, NE 68327 Equipment Sold "AS IS, WHERE IS": All equipment/property is sold "AS IS, WHERE IS" with no warranty or guarantees, expressed or implied, No operational assessments or testing have been made by Del Peterson on this item, it has been photographed ONLY.



#94 - Wylie Poly Tip Tank (NP4630)

Wylie Poly Tip Tank (NP4630), portable, 3,000 gallon capacity, single axle, 9.5L-15SL tires, Unit #2190, CPS Unit #91877. Notes: Item Location: Chester, NE 68327 Equipment Sold "AS IS, WHERE IS": All equipment/property is sold "AS IS, WHERE IS" with no warranty or guarantees, expressed or implied, No operational assessments or testing have been made by Del Peterson on this item, it has been photographed ONLY.



#95 - Wylie Poly Tip Tank (NP4631)

Wylie Poly Tip Tank (NP4631), portable, 3,000 gallon capacity, single axle, 9.5L-15SL tires, Unit #2127, CPS Unit #91869. Notes: Item Location: Chester, NE 68327 Equipment Sold "AS IS, WHERE IS": All equipment/property is sold "AS IS, WHERE IS" with no warranty or guarantees, expressed or implied, No operational assessments or testing have been made by Del Peterson on this item, it has been photographed ONLY.



#96 - Seed Tender (NP4628)

Seed Tender (NP4628), single axle, bumper hitch, hard top, side ladder, 9.5L-15SL tires, electric motor, 12 volt auger, CPS Unit #91891. Notes: Item Location: Chester, NE 68327 Equipment Sold "AS IS, WHERE IS": All equipment/property is sold "AS IS, WHERE IS" with no warranty or guarantees, expressed or implied, No operational assessments or testing have been made by Del Peterson on this item, it has been photographed ONLY.



#97 - 2011 John Deere 635F Hydraflex Header (NP4951)

2011 John Deere 635F Hydraflex Header (NP4951), 35' flexible platform, HHS, CM, single point, stubble lights, low stone dam, composite fingers, long/long sections, spare knife, auger with full width fingers. Notes: Item Location: Pender, NE 68047 Equipment Sold "AS IS, WHERE IS": All equipment/property is sold "AS IS, WHERE IS" with no warranty or guarantees, expressed or implied, No operational assessments or testing have been made by Del Peterson on this item, it has been photographed ONLY.



#98 - 3 Wheel NH3 Running Gear (NP4627)

3 Wheel NH3 Running Gear (NP4627), 11L-15 flotation tires. Notes: Item Location: Chester, NE 68327 Equipment Sold "AS IS, WHERE IS": All equipment/property is sold "AS IS, WHERE IS" with no warranty or guarantees, expressed or implied, No operational assessments or testing have been made by Del Peterson on this item, it has been photographed ONLY.



#99 - 3 Wheel NH3 Running Gear (NP4626)

3 Wheel NH3 Running Gear (NP4626), 11L-15 flotation tires, poly water tank. Notes: Item Location: Chester, NE 68327 Equipment Sold "AS IS, WHERE IS": All equipment/property is sold "AS IS, WHERE IS" with no warranty or guarantees, expressed or implied, No operational assessments or testing have been made by Del Peterson on this item, it has been photographed ONLY.



#100 - 3 Wheel NH3 Running Gear (NP4625)

3 Wheel NH3 Running Gear (NP4625), 11L-15 flotation tires, poly water tank. Notes: Item Location: Chester, NE 68327 Equipment Sold "AS IS, WHERE IS": All equipment/property is sold "AS IS, WHERE IS" with no warranty or guarantees, expressed or implied, No operational assessments or testing have been made by Del Peterson on this item, it has been photographed ONLY.



#101 - 2005 Kenworth W900 Truck (PZ6335)

2005 Kenworth W900 Truck (PZ6335), Cummins ISX 530 diesel engine, 18 speed transmission, air conditioning, heat, Am/Fm radio, cruise control, engine brake, stand up sleeper, tandem axle, full screw, air ride suspension, 5th wheel, Michelin XDN2 11R24.5 virgin rubber, inner & outer aluminum rims, shows 1,520,363 miles. Notes: This truck has approx. 316,000 miles on an out of frame major overhaul with reman transmission with less than 50,000 miles. Paperwork available upon request. Please call seller for further information. Item Location: Monticello, IA 52310 Equipment Sold "AS IS, WHERE IS": All equipment/property is sold "AS IS, WHERE IS" with no warranty or guarantees, expressed or implied, No operational assessments or testing have been made by Del Peterson on this item, it has been photographed ONLY.



#102 - 3 Wheel NH3 Running Gear (NP4624)

3 Wheel NH3 Running Gear (NP4624), 11L-15 flotation tires, poly water tank. Notes: Item Location: Chester, NE 68327 Equipment Sold "AS IS, WHERE IS": All equipment/property is sold "AS IS, WHERE IS" with no warranty or guarantees, expressed or implied, No operational assessments or testing have been made by Del Peterson on this item, it has been photographed ONLY.



#103 - 3 Wheel NH3 Running Gear (NP4623)

3 Wheel NH3 Running Gear (NP4623), 11L-15 flotation tires, poly water tank. Notes: Item Location: Chester, NE 68327 Equipment Sold "AS IS, WHERE IS": All equipment/property is sold "AS IS, WHERE IS" with no warranty or guarantees, expressed or implied, No operational assessments or testing have been made by Del Peterson on this item, it has been photographed ONLY.



#104 - 3 Wheel NH3 Running Gear (NP4622)

3 Wheel NH3 Running Gear (NP4622), 11L-15 flotation tires, poly water tank. Notes: Item Location: Chester, NE 68327 Equipment Sold "AS IS, WHERE IS": All equipment/property is sold "AS IS, WHERE IS" with no warranty or guarantees, expressed or implied, No operational assessments or testing have been made by Del Peterson on this item, it has been photographed ONLY.



#105 - Seed Tender (NP4629)

Double Compartment Seed Tender (NP4629), tandem axle, dual hard top, side ladder, 11L-15SL tires, 3 gallon poly tank, electric motor, 12 volt auger, Unit #T66. Notes: NO BATTERY. Item Location: Chester, NE 68327 Equipment Sold "AS IS, WHERE IS": All equipment/property is sold "AS IS, WHERE IS" with no warranty or guarantees, expressed or implied, No operational assessments or testing have been made by Del Peterson on this item, it has been photographed ONLY.



#106 - 1988 Massey Ferguson Loader (PZ6323)

1988 Massey Ferguson Loader (PZ6323), Detroit 8V71 diesel engine, Allison 2 speed transmission, drive train, air brakes, cab, lights, 1,000 hours on engine and 500 hours on new hydraulic pump. Notes: Item Location: Frankfort, KY 40601 Equipment Sold "AS IS, WHERE IS": All equipment/property is sold "AS IS, WHERE IS" with no warranty or guarantees, expressed or implied, No operational assessments or testing have been made by Del Peterson on this item, it has been photographed ONLY.



#107 - Grain Bulk Headers (JMK157)

Grain Bulk Headers (JMK157), 13 - 8' high by 8' long grain bulk headers, 2 - 90 degree corner headers that cover a perimeter distance of 12' long, total perimeter distance covered is 128'. Notes: Item Location: Lanark, IL 61046 Equipment Sold "AS IS, WHERE IS": All equipment/property is sold "AS IS, WHERE IS" with no warranty or guarantees, expressed or implied, No operational assessments or testing have been made by Del Peterson on this item, it has been photographed ONLY.



#108 - 2015 Farm King Grain Cart (PD309)

2015 Farm King Grain Cart (PD309), 1360 bushel capacity, DigiStar scale control, like new condition with very little use. Notes: Item Location: Pekin, IN 47165 Equipment Sold "AS IS, WHERE IS": All equipment/property is sold "AS IS, WHERE IS" with no warranty or guarantees, expressed or implied, No operational assessments or testing have been made by Del Peterson on this item, it has been photographed ONLY.



#109 - 1932 Farmall F-12 Tractor (PD311)

1932 Farmall F-12 Tractor (PD311), completely restored, everything works well on tractor and is in show condition. Notes: Item Location: Pekin, IN 47165 Equipment Sold "AS IS, WHERE IS": All equipment/property is sold "AS IS, WHERE IS" with no warranty or guarantees, expressed or implied, No operational assessments or testing have been made by Del Peterson on this item, it has been photographed ONLY.



#110 - 2009 New Holland TV 6070 (KMK256)

2009 New Holland TV 6070 (KMK256), bi-directional, heavy duty 2 yard bucket, set of 4' foot forks, cab end: drawbar, 3 point, pto, 3 remotes, hi-flow with large couplers engine end: 2 remotes, grill guard, fenders, weights, drawbar, 3 point, pto, radio, air conditioning, heat, reversing fan, shows 3071 hours. Notes: Very nice low hour machine. Item Location: Boone, IA 50036 Equipment Sold "AS IS, WHERE IS": All equipment/property is sold "AS IS, WHERE IS" with no warranty or guarantees, expressed or implied, No operational assessments or testing have been made by Del Peterson on this item, it has been photographed ONLY.



#111 - Kifco T210 Water-Reel Unit#215 (MH176)

Kifco T210 Water-Reel Unit#215 (MH176), turbine driven water-reel, 2.1" ID x 400' MDPE tube, mechanical levelwind system with miswrap safety to ensure uniform, reliable tube rewinding, simple and accurate speed control sprinkler selector valve easily allows for auto shut-off at end of run or continued operation, three wheeled chassis with floatation tires for easy transportation. Notes: Item Location: New Orleans, LA 70126 Equipment Sold "AS IS, WHERE IS": All equipment/property is sold "AS IS, WHERE IS" with no warranty or guarantees, expressed or implied, No operational assessments or testing have been made by Del Peterson on this item, it has been photographed ONLY.



#112 - 2015 Timppe Tri Axle Grain Trailer (PZ6332)

2015 Timppe Tri Axle Grain Trailer (PZ6332), 2015 Timppe Super Hopper 50' aluminum hopper bottom grain trailer, ag hoppers, tandem axle, rear lift axle, air ride suspension, front & rear ladder, 2 rows of lights, Bridgestone 11R24.5 tires, outer & inner aluminum rims, Thunder Power 5000 series roll over tarp, Unit# 59. Notes: Item Location: Monticello, IA 52310 Equipment Sold "AS IS, WHERE IS": All equipment/property is sold "AS IS, WHERE IS" with no warranty or guarantees, expressed or implied, No operational assessments or testing have been made by Del Peterson on this item, it has been photographed ONLY.



#113 - Layco K812 Undercar Conveyor (EG229)

Layco K812 Undercar Conveyor (EG229), manufactured by Doyle Equipment, purchased new 3 years ago. Notes: Seller has original paperwork for equipment. Item Location: Mansfield, IL 61854 Equipment Sold "AS IS, WHERE IS": All equipment/property is sold "AS IS, WHERE IS" with no warranty or guarantees, expressed or implied, No operational assessments or testing have been made by Del Peterson on this item, it has been photographed ONLY.



#114 - Waconia 8000 Vertical Blender Waconia Conveyor (EG227)

Waconia 8000 Vertical Blender Waconia Conveyor (EG227), all stainless steel, manual discharge, approximately 25 years old, load out conveyor 24 inch X 32 foot. Notes: Seller has original paperwork for equipment. Item Location: Mansfield, IL 61854 Equipment Sold "AS IS, WHERE IS": All equipment/property is sold "AS IS, WHERE IS" with no warranty or guarantees, expressed or implied, No operational assessments or testing have been made by Del Peterson on this item, it has been photographed ONLY.



#115 - "NEW" Precision Pacesetter 1 Drone (KMK257)

"NEW" Precision Pacesetter 1 Drone (KMK257), This is the ultimate crop scouting tool, this drone has never been used, the drone consists of the following: six (6) blade copter style drone, crop scouting capability, auto-pilot, dual (2) cameras (naked eye and infrared), live-feed monitor with charger (ability to see what the drone is seeing), controller, three (3) sets of batteries (6 total batteries), battery life when scouting a field ranges from 15-20 minutes, two battery chargers, and a laptop computer, the laptop is already preloaded with all softwares (Agisoft for stitching images, Global Mapper for creating crop health image, Ground Station for auto-pilot) indestructible Pelican carrying case (this case fits everything that you need to fly the drone and carry all the extras that are included with this package), the drone itself is equipped with the most advance technology to make it perform to its best ability with high tech GPS and Giro that will ensure the drone stays stable and flat at all times during flight, the drone weighs approximately 10 pounds, the Case when loaded with everything that is included weighs around 56 pounds, this makes it easy to load into the truck and move from place to place, the case has wheels on it to be pulled like a suitcase. Notes: Item Location: Nebraska City, NE 68410 Equipment Sold "AS IS, WHERE IS": All equipment/property is sold "AS IS, WHERE IS" with no warranty or guarantees, expressed or implied, No operational assessments or testing have been made by Del Peterson on this item, it has been photographed ONLY.



#116 - 1976 Load King 353 L.F. Low Boy Trailer (KMK242)

1976 Load King 353 L.F. Low Boy Trailer (KMK242), 40 ton, tri-axle, spring suspension, mechanical fold down, 8' width, 7' top deck, 28' 6" well, table side not rounded. Notes: Complete rewire of trailer, and harness with lights. Item Location: Oxford, IA 52322 Equipment Sold "AS IS, WHERE IS": All equipment/property is sold "AS IS, WHERE IS" with no warranty or guarantees, expressed or implied, No operational assessments or testing have been made by Del Peterson on this item, it has been photographed ONLY.



#117 - Willmar 645 Hooded Spray Bar (RMC121)

Willmar 645 Hooded Spray Bar (RMC121), Model 0923450, 100' folding boom, Red Ball hoods w/triple tips, 1200 gallon poly liquid tank, poly rinse tank, hydraulic pump. Notes: This spray bar is off the tractor and ready to load. Item Location: Cleveland, MS 38733 Equipment Sold "AS IS, WHERE IS": All equipment/property is sold "AS IS, WHERE IS" with no warranty or guarantees, expressed or implied, No operational assessments or testing have been made by Del Peterson on this item, it has been photographed ONLY.



#118 - Kifco T210 Water-Reel Unit#214 (MH177)

Kifco T210 Water-Reel Unit#214 (MH177), turbine driven water-reel, 2.1" ID x 400' MDPE tube, mechanical levelwind system with miswrap safety to ensure uniform, reliable tube rewinding, simple and accurate speed control sprinkler selector valve easily allows for auto shut-off at end of run or continued operation, three wheeled chassis with floatation tires for easy transportation. Notes: Portable irrigation system, can be easily transported by a small garden tractor or utility vehicle, bought in 2013, owner believes they have never been used. Item Location: New Orleans, LA 70126 Equipment Sold "AS IS, WHERE IS": All equipment/property is sold "AS IS, WHERE IS" with no warranty or guarantees, expressed or implied, No operational assessments or testing have been made by Del Peterson on this item, it has been photographed ONLY.



#119 - 2008 Yale MPB040-E Walkie Pallet Truck (TH134)

2008 Yale MPB040-E Walkie Pallet Truck (TH134), forks measure 48" in length. Notes: It is in good shape and in working condition Item Location: Crawfordsville, IN 47933 Equipment Sold "AS IS, WHERE IS": All equipment/property is sold "AS IS, WHERE IS" with no warranty or guarantees, expressed or implied, No operational assessments or testing have been made by Del Peterson on this item, it has been photographed ONLY.



#120 - 2002 Salem Camper (DR6350)

2002 Salem Camper (DR6350), 25' gooseneck hitch, tandem axle, single slide out, side awning, sleeps 8, full kitchen, full bath. Notes: Item Location: Mauston, WI 53948 Equipment Sold "AS IS, WHERE IS": All equipment/property is sold "AS IS, WHERE IS" with no warranty or guarantees, expressed or implied, No operational assessments or testing have been made by Del Peterson on this item, it has been photographed ONLY.



#121 - Blu-jet AT3000 (DR6345)

Blu-jet AT3000 (DR6345), 15 knife side dress applicator, 1000 gallon poly liquid tank, ground drive pump, hydraulic wings. Notes: Item Location: Mauston, WI 53948 Equipment Sold "AS IS, WHERE IS": All equipment/property is sold "AS IS, WHERE IS" with no warranty or guarantees, expressed or implied, No operational assessments or testing have been made by Del Peterson on this item, it has been photographed ONLY.



#122 - 1993 Freightliner (DR6348)

1993 Freightliner (DR6348), Detroit diesel engine, 10 speed transmission, 20' aluminum dump box, trash tarp, heavy front axle, tandem axle full screw, air tag & pusher axle, Jake brake. Notes: Item Location: Mauston, WI 53948 Equipment Sold "AS IS, WHERE IS": All equipment/property is sold "AS IS, WHERE IS" with no warranty or guarantees, expressed or implied, No operational assessments or testing have been made by Del Peterson on this item, it has been photographed ONLY.



#123 - 1994 Chevy 3500 (DR6349)

1994 Chevy 3500 (DR6349), diesel engine, 12' stake bed. Notes: Item Location: Mauston, WI 53948 Equipment Sold "AS IS, WHERE IS": All equipment/property is sold "AS IS, WHERE IS" with no warranty or guarantees, expressed or implied, No operational assessments or testing have been made by Del Peterson on this item, it has been photographed ONLY.



#124 - 2005 Massey Ferguson 6465 Tractor (JMK160)

2005 Massey Ferguson 6465 Tractor (JMK160), Perkins 105HP engine, Dyna6 24 speed power shift transmission, brand new Firestone rear tires and matching front tires with 90% tread remaining, PTO, three point, 3 rear hydraulic remotes, am/fm/cd radio, heat and AC, showing 4,055 hrs. Notes: Item Location: Mazon, IL 60444 Equipment Sold "AS IS, WHERE IS": All equipment/property is sold "AS IS, WHERE IS" with no warranty or guarantees, expressed or implied, No operational assessments or testing have been made by Del Peterson on this item, it has been photographed ONLY.



#125 - Zoske 60' 3 Point Side Dress Bar with Yetter Coulters (MK027)

Zoske 60' 3 Point Side Dress Bar with Yetter Coulters (MK027) Double 7 x 7 frame, 23 shanks, 5 sections fold and flex, 5 Tee Jet section valves included, Yetter coulters with injectors, John Blue flow indicator, 6 gauge wheels, 0020 injector tips, pump not included, coulters size 19 3/4", back width from coulters to coulters 22 1/2 feet, back bar width 17 1/2 feet, 16 pin rate controller will work with Green Star or Raven. [CLICK HERE TO SEE THE SIDE DRESS MACHINE IN ACTION](#) Notes: Green Star Rate Controller is not included but seller will entertain offers from interested parties. Seller will also help load at no additional cost. Item Location: Randolph, NE 68771 Equipment Sold "AS IS, WHERE IS": All equipment/property is sold "AS IS, WHERE IS" with no warranty or guarantees, expressed or implied, No operational assessments or testing have been made by Del Peterson on this item, it has been photographed ONLY.



#126 - Allis Chalmers XT 190 Tractor (CG263)

Allis Chalmers XT 190 Tractor (CG263), engine# 2D-21916, diesel, 3 point hitch, 18.4R 34 tires. Notes: Item Location: Osage, IA 50461 Equipment Sold "AS IS, WHERE IS": All equipment/property is sold "AS IS, WHERE IS" with no warranty or guarantees, expressed or implied, No operational assessments or testing have been made by Del Peterson on this item, it has been photographed ONLY.



#127 - 1997 Wilson DWH-400 Trailer (CG261)

1997 Wilson DWH-400 Trailer (CG261), 43' x 96", air ride, 66" sides. Notes: Item Location: Osage, IA 50461 Equipment Sold "AS IS, WHERE IS": All equipment/property is sold "AS IS, WHERE IS" with no warranty or guarantees, expressed or implied, No operational assessments or testing have been made by Del Peterson on this item, it has been photographed ONLY.



#128 - Ground Drive Pump (DR6351)

Ground Drive Pump (DR6351), ground drive wheel & bracket NO PUMP. Notes: Item Location: Mauston, WI 53948 Equipment Sold "AS IS, WHERE IS": All equipment/property is sold "AS IS, WHERE IS" with no warranty or guarantees, expressed or implied, No operational assessments or testing have been made by Del Peterson on this item, it has been photographed ONLY.



#129 - Electric Motor (DR6347)

Electric Motor (DR6347), 7.5hp 3 phase electric motor. Notes: Item Location: Mauston, WI 53948 Equipment Sold "AS IS, WHERE IS": All equipment/property is sold "AS IS, WHERE IS" with no warranty or guarantees, expressed or implied, No operational assessments or testing have been made by Del Peterson on this item, it has been photographed ONLY.



#130 - Dickey-John & Mid Tech Controllers (DR6346)

Dickey-John & Mid Tech Controllers (DR6346), Dickey-john 100 dual screen controller, Mid Tech model TASC 6500 controller. Notes: Item Location: Mauston, WI 53948 Equipment Sold "AS IS, WHERE IS": All equipment/property is sold "AS IS, WHERE IS" with no warranty or guarantees, expressed or implied, No operational assessments or testing have been made by Del Peterson on this item, it has been photographed ONLY.



#131 - 20 ton Tag-a-long trailer

20 ton Tag-a-long trailer NO TITLE. Notes: NO TITLE. Item Location: Mauston, WI 53948 Equipment Sold "AS IS, WHERE IS": All equipment/property is sold "AS IS, WHERE IS" with no warranty or guarantees, expressed or implied, No operational assessments or testing have been made by Del Peterson on this item, it has been photographed ONLY.



#132 - 2007 Case IH MXM155 Pro Tractor (JMK161)

2007 Case IH MXM155 Pro Tractor (JMK161), with a Herder Grenadier MBK513LS boom flail mower attachment, 3860 hours, 7.5L diesel engine, 18 speed forward, 6 speed reverse power shift transmission, 540/1000 PTO, 3 point hitch, 4 rear hydraulic remotes, extendable boom flail mower attachment with joystick controls. Notes: Item Location: Mazon, IL 60444 Equipment Sold "AS IS, WHERE IS": All equipment/property is sold "AS IS, WHERE IS" with no warranty or guarantees, expressed or implied, No operational assessments or testing have been made by Del Peterson on this item, it has been photographed ONLY.



#133 - 2006 Freightliner Columbia (CG262)

2006 Freightliner Columbia (CG262), Detroit 14L 515HP diesel engine, 10 speed transmission w/ overdrive, low pro tires, heat/AC, 70" mid roof sleeper, tandem axle with air lift 3rd axle, air ride suspension, 231" wheel base, tilt steering, shows 819,573 miles. Notes: Item Location: Osage, IA 50461 Equipment Sold "AS IS, WHERE IS": All equipment/property is sold "AS IS, WHERE IS" with no warranty or guarantees, expressed or implied, No operational assessments or testing have been made by Del Peterson on this item, it has been photographed ONLY.



#134 - 1993 Kenworth Truck (PZ6350)

1993 Kenworth Truck (PZ6350), 3406 Cat diesel engine, 10 speed transmission, heat, Am/Fm radio, tandem axle, full screw, front tires 60-70%, rear tires 25%, shows 945,265, Unit# 10234. Notes: Truck brake pedal valve is stuck and cannot be driven as is. Please call seller for more information. PLEASE ALLOW AT LEAST 60 DAYS FOR TITLE TRANSFER. Item Location: Creston, IA 50801 Equipment Sold "AS IS, WHERE IS": All equipment/property is sold "AS IS, WHERE IS" with no warranty or guarantees, expressed or implied, No operational assessments or testing have been made by Del Peterson on this item, it has been photographed ONLY.



#135 - Convey - All Belt Conveyor (PZ6337)

Convey - All Belt Conveyor (PZ6337), Convey - All model TCH-1035 belt conveyor, electric start gas engine, portable. Notes: Item Location: Iowa City, IA 52244 Equipment Sold "AS IS, WHERE IS": All equipment/property is sold "AS IS, WHERE IS" with no warranty or guarantees, expressed or implied, No operational assessments or testing have been made by Del Peterson on this item, it has been photographed ONLY.



#136 - Convey - All Conveyor (PZ6346)

Convey - All Conveyor (PZ6346), Convey - All model TCH-14115A, belt conveyor, PTO, portable, 11L-15 flotation tires. Notes: Item Location: Iowa City, IA 52244 Equipment Sold "AS IS, WHERE IS": All equipment/property is sold "AS IS, WHERE IS" with no warranty or guarantees, expressed or implied, No operational assessments or testing have been made by Del Peterson on this item, it has been photographed ONLY.



#137 - Drive Over Conveyor (PZ6338)

Drive Over Conveyor (PZ6338), 12' hydraulic drive over belt conveyor, portable, hand controls, P185/65R14 tires. Notes: Item Location: Iowa City, IA 52244 Equipment Sold "AS IS, WHERE IS": All equipment/property is sold "AS IS, WHERE IS" with no warranty or guarantees, expressed or implied, No operational assessments or testing have been made by Del Peterson on this item, it has been photographed ONLY.



#138 - Westfield Grain Auger (PZ6348)

Westfield Grain Auger (PZ6348), Westfield MK 130-81 grain auger, swing hopper, PTO, portable, 31x10.50R15LT tires. Notes: Had a little dent in auger that was fixed. Please call seller for further information. Item Location: Iowa City, IA 52244 Equipment Sold "AS IS, WHERE IS": All equipment/property is sold "AS IS, WHERE IS" with no warranty or guarantees, expressed or implied, No operational assessments or testing have been made by Del Peterson on this item, it has been photographed ONLY.



#139 - Drive System (PZ6349)

Drive System (PZ6349), drive system for swing hopper, 16x6.50-8 tires. Notes: Item Location: Iowa City, IA 52244 Equipment Sold "AS IS, WHERE IS": All equipment/property is sold "AS IS, WHERE IS" with no warranty or guarantees, expressed or implied, No operational assessments or testing have been made by Del Peterson on this item, it has been photographed ONLY.



#140 - 2012 Freightliner Coronado 122 (JMK 159)

2012 Freightliner Coronado 122 (JMK 159), Detroit DD-15, 505 HP , Eaton autoshift, automatic transmission, 10 aluminum wheels, all brand new virgin tires, brakes are all new within the last 10,000 miles, 2-70 Gal fuel tanks, 210" wheelbase, jake brake, dual exhaust, CB radio, am/fm/cd radio, heat and AC, power windows, power seats, power mirrors, shows 410000 miles. Notes: Item Location: Mazon, IL 60444 Equipment Sold "AS IS, WHERE IS": All equipment/property is sold "AS IS, WHERE IS" with no warranty or guarantees, expressed or implied, No operational assessments or testing have been made by Del Peterson on this item, it has been photographed ONLY.



#141 - Stainless Steel Foam Tank (PZ6343)

Stainless Steel Foam Tank (PZ6343), 40 gallon stainless steel foam marker tank. Notes: Item Location: Iowa City, IA 52244 Equipment Sold "AS IS, WHERE IS": All equipment/property is sold "AS IS, WHERE IS" with no warranty or guarantees, expressed or implied, No operational assessments or testing have been made by Del Peterson on this item, it has been photographed ONLY.



#142 - 4 Wheel Running Gear (PZ6340)

4 Wheel Running Gear (PZ6340), 4 wheel auto steer running gear. Notes: May have a flat tire. Item Location: Iowa City, IA 52244 Equipment Sold "AS IS, WHERE IS": All equipment/property is sold "AS IS, WHERE IS" with no warranty or guarantees, expressed or implied, No operational assessments or testing have been made by Del Peterson on this item, it has been photographed ONLY.



#143 - Tandem Axle Gear (PZ6341)

Tandem Axle Gear (PZ6341), tandem axle gear, 12.5L-16 flotation tires. Notes: May have a flat tire. Item Location: Iowa City, IA 52244 Equipment Sold "AS IS, WHERE IS": All equipment/property is sold "AS IS, WHERE IS" with no warranty or guarantees, expressed or implied, No operational assessments or testing have been made by Del Peterson on this item, it has been photographed ONLY.



#144 - 2000 Wilson Grain Trailer (PZ6344)

2000 Wilson Grain Trailer (PZ6344), 2000 Wilson model DWH-400 PaceSetter 40' aluminum hopper bottom grain trailer, ag hoppers, tandem axle, air ride suspension, roll over tarp, 11R24.5 tires, aluminum rims. Notes: Item Location: Iowa City, IA 52244 Equipment Sold "AS IS, WHERE IS": All equipment/property is sold "AS IS, WHERE IS" with no warranty or guarantees, expressed or implied, No operational assessments or testing have been made by Del Peterson on this item, it has been photographed ONLY.



#145 - 1984 Budd Van Trailer (PZ6347)

1984 Budd Van Trailer (PZ6347), 1984 Budd model YS2S450C58 dry van trailer, side cargo door, roll up door, tandem axle, 11R22.5 tires, Unit# 19. Notes: Items inside trailer are NOT included. Item Location: Iowa City, IA 52244 Equipment Sold "AS IS, WHERE IS": All equipment/property is sold "AS IS, WHERE IS" with no warranty or guarantees, expressed or implied, No operational assessments or testing have been made by Del Peterson on this item, it has been photographed ONLY.



#146 - 2000 Kenworth T800 Truck (PZ6345)

2000 Kenworth T800 Truck (PZ6345), C-12 Cat diesel engine, 13 speed transmission, air conditioning, heat, Am/Fm CD stereo, cruise control, engine brake, tandem axle, full screw, air ride suspension, 5th wheel, 11R22.5 tires, aluminum rims, shows 746,129 miles, Unit# 210. Notes: Item Location: Iowa City, IA 52244 Equipment Sold "AS IS, WHERE IS": All equipment/property is sold "AS IS, WHERE IS" with no warranty or guarantees, expressed or implied, No operational assessments or testing have been made by Del Peterson on this item, it has been photographed ONLY.



#147 - 1990 Ford F350XL Cargo Box Truck (PZ6336)

1990 Ford F350XL Cargo Box Truck (PZ6336), diesel engine, automatic transmission, air conditioning, heat, Am/Fm radio, single axle, dual wheels, cargo box, roll up door, pull out ramp, LT215/85R16 tires, shows 72,655 miles, Unit# 29. Notes: Item Location: Iowa City, IA 52244 Equipment Sold "AS IS, WHERE IS": All equipment/property is sold "AS IS, WHERE IS" with no warranty or guarantees, expressed or implied, No operational assessments or testing have been made by Del Peterson on this item, it has been photographed ONLY.



#148 - Steel Flatbed (PZ6339)

Steel Flatbed (PZ6339), 8' x 8' steel flatbed. Notes: Flatbed only, items on top do NOT sell with flatbed. Item Location: Iowa City, IA 52244 Equipment Sold "AS IS, WHERE IS": All equipment/property is sold "AS IS, WHERE IS" with no warranty or guarantees, expressed or implied, No operational assessments or testing have been made by Del Peterson on this item, it has been photographed ONLY.



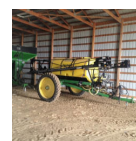
#149 - Snowblade (PZ6342)

Snowblade (PZ6342), 8' snowblade. Notes: Item Location: Iowa City, IA 52244 Equipment Sold "AS IS, WHERE IS": All equipment/property is sold "AS IS, WHERE IS" with no warranty or guarantees, expressed or implied, No operational assessments or testing have been made by Del Peterson on this item, it has been photographed ONLY.



#150 - 2003 Bestway Field Pro 3 (DL130)

2003 Bestway Field Pro 3 (DL130), 1200 gallon poly liquid tank with indicator core, rinse tank, fresh water tank, Raven 450, 80ft boom, 4 boom section. Notes: Always shedded. Item Location: McLean, NE 68747 Equipment Sold "AS IS, WHERE IS": All equipment/property is sold "AS IS, WHERE IS" with no warranty or guarantees, expressed or implied, No operational assessments or testing have been made by Del Peterson on this item, it has been photographed ONLY.



#151 - Caterpillar 66 Pull Type Grader (TC138)

Caterpillar 66 Pull Type Grader (TC138), 12 foot moldboard, all manual controls, was converted to hydraulic blade lift, still has manual blade lift hand wheels. Notes: Item Location: Hoisington, KS 67544 Equipment Sold "AS IS, WHERE IS": All equipment/property is sold "AS IS, WHERE IS" with no warranty or guarantees, expressed or implied, No operational assessments or testing have been made by Del Peterson on this item, it has been photographed ONLY.

#152 - 1983 Chevy 1 Ton (TC137)

1983 Chevy 1 Ton (TC137), 454 engine, manual, new tires on the rear, 2 wheel drive, gooseneck ball and RV hitch, shows unknown actual miles. Notes: Item Location: Hoisington, KS 67544 Equipment Sold "AS IS, WHERE IS": All equipment/property is sold "AS IS, WHERE IS" with no warranty or guarantees, expressed or implied, No operational assessments or testing have been made by Del Peterson on this item, it has been photographed ONLY.

#153 - 2005 Kinze 1050 Grain Cart (EG236)

2005 Kinze 1050 Grain Cart (EG236), 1000 bushel, double auger, side unloading auger, tracks, scales. Notes: Item Location: Bowling Green, MO 63334 Equipment Sold "AS IS, WHERE IS": All equipment/property is sold "AS IS, WHERE IS" with no warranty or guarantees, expressed or implied, No operational assessments or testing have been made by Del Peterson on this item, it has been photographed ONLY.



#154 - 2003 Kinze 850 Grain Cart (EG237)

2003 Kinze 850 Grain Cart (EG237), 850 bushel, double auger, corner unloading auger, tracks, tarp. Notes: Item Location: Hannibal, MO 63401 Equipment Sold "AS IS, WHERE IS": All equipment/property is sold "AS IS, WHERE IS" with no warranty or guarantees, expressed or implied, No operational assessments or testing have been made by Del Peterson on this item, it has been photographed ONLY.



#155 - 2011 MacDon FD70-40 Flex Draper Header (EG229)

2011 MacDon FD70-40 Flex Draper Header (EG229), 40' in length, green stripe on side shields, around 2500-3000 total acres on the head, one owner, local trade in, single knife drive very nice used header, will put any adapter on this head to fit any combine. Notes: Item Location: Hannibal, MO 63401 Equipment Sold "AS IS, WHERE IS": All equipment/property is sold "AS IS, WHERE IS" with no warranty or guarantees, expressed or implied, No operational assessments or testing have been made by Del Peterson on this item, it has been photographed ONLY.



#156 - 2010 New Holland H7230 Discbine disc mower conditioner (EG234)

2010 New Holland H7230 Discbine disc mower conditioner (EG234), 540 pto, rubber on rubber chevron conditioner rolls, 8 disc hubs, 10'4" cut width, pull type, one owner, local trade, Notes: Item Location: Brookfield, MO 64628 Equipment Sold "AS IS, WHERE IS": All equipment/property is sold "AS IS, WHERE IS" with no warranty or guarantees, expressed or implied, No operational assessments or testing have been made by Del Peterson on this item, it has been photographed ONLY.



#157 - 1999 Bobcat 753 Skid Steer Loader (EG233)

1999 Bobcat 753 Skid Steer Loader (EG233), 3000 hours, tires are good, open cab unit with stick and pedal controls, replaced lift and tilt seals in the control valve, replaced exhaust manifold, muffler, gasket and flex pipe, replaced the right side drive hoses, replaced the alternator, replaced the alternator belt and drive belt and rebuilt the drive belt tensioner pulley, changed the Hydraulic filter and oil, replaced the hydraulic oil temp sensor, changed the engine oil and filter and the fuel filter, replaced the fuel air bleed valve, changed out the coolant, replaced both air filters, rebuilt the steering and reset neutral adjustment, replaced the fuel lines both the return and feed from tank to engine, replaced the engine ground cable, battery and battery hold downs, this machine has been gone through by a certified Bobcat Mechanic, this unit includes a 74" hi cap bucket. Notes: Item Location: Bowling Green, MO 63334 Equipment Sold "AS IS, WHERE IS": All equipment/property is sold "AS IS, WHERE IS" with no warranty or guarantees, expressed or implied, No operational assessments or testing have been made by Del Peterson on this item, it has been photographed ONLY.



#158 - 1991 John Deere 4755 MFWD Tractor (EG230)

1991 John Deere 4755 MFWD Tractor (EG230), 420/85R30 and 520/85R42 tires, 12 front weights, front fenders, 15 and 4 powershift transmission, 1000 pto, hours unknown, tach replaced at 4400 in 2012, 3 remotes, new hydraulic pump, new bearings in front axle hubs, new electrical board for 4wd, new rear axle bearings, new seat cushion, tractor is solid, local trade in. Notes: Item Location: Quincy, IL 62305 Equipment Sold "AS IS, WHERE IS": All equipment/property is sold "AS IS, WHERE IS" with no warranty or guarantees, expressed or implied, No operational assessments or testing have been made by Del Peterson on this item, it has been photographed ONLY.



#159 - 2007 New Holland TG215 MFWD Tractor (EG231)

2007 New Holland TG215 MFWD Tractor (EG231), 480/70R34 front tires, 710/70R42 rear tires, no duals, 1600 hours, 4 remotes, 3pt with quick hitch, Supersteer, Westendorf XTA700 Loader, one owner tractor, local trade in, Deluxe Cab, Performance Instrumentation, Deluxe Seat NASO with heater, foot throttle, 18 speed powershift transmission, 120" bar axle, wide front fenders, 540/1000 pto, electric mirrors, radar, low pressure motor return, AM/FM/CD/WB Radio. Notes: Item Location: Hannibal, MO 63401 Equipment Sold "AS IS, WHERE IS": All equipment/property is sold "AS IS, WHERE IS" with no warranty or guarantees, expressed or implied, No operational assessments or testing have been made by Del Peterson on this item, it has been photographed ONLY.

#160 - 2004 New Holland TG255 MFWD Tractor (EG232)

2004 New Holland TG255 MFWD Tractor (EG232), Deluxe Cab, Performance instrumentation, Seat Deluxe NASO w/ heater, foot throttle, worklights pkg halogen mid and roof, 18 speed powershift, 120" bar axle, 4wd axle w/ supersteer, 22 front weights, 4 rear remotes, 540/1000 pto, AM/FM Radio, Radar, Rear duals 520/85R46, Front singles 480/70R34. Notes: Item Location: Brookfield, MO 64628 Equipment Sold "AS IS, WHERE IS": All equipment/property is sold "AS IS, WHERE IS" with no warranty or guarantees, expressed or implied, No operational assessments or testing have been made by Del Peterson on this item, it has been photographed ONLY.



#161 - Stone Mortar Mixer 655PM (CG159)

Stone Mortar Mixer 655PM (CG159), 2" ball mount, Honda motor, Notes: Item Location: Webster City, IA 50595 Equipment Sold "AS IS, WHERE IS": All equipment/property is sold "AS IS, WHERE IS" with no warranty or guarantees, expressed or implied, No operational assessments or testing have been made by Del Peterson on this item, it has been photographed ONLY.



#162 - 2003 CASE XT60 (MH178)

2003 CASE XT60 (MH178), Case diesel engine 75HP, Gear Pump Hydro transmission, open cab, 60" wide, foam filled tires, shows 1,455 hours. Notes: Bought new, one owner, good running machine. Item Location: Kearney, MO 64060 Equipment Sold "AS IS, WHERE IS": All equipment/property is sold "AS IS, WHERE IS" with no warranty or guarantees, expressed or implied, No operational assessments or testing have been made by Del Peterson on this item, it has been photographed ONLY.



#163 - Challenger MT965B W/ Johnson Tile Plow & Boots (KMK1003)

Challenger MT965B W/ Johnson Tile Plow & Boots (KMK1003), CAT Power, 510 hp., 18 speed, full set of front weights, buddy seat, power and heated seat, heat and a/c, am/fm radio, Trimble RTK GPS controlled with FMX display for grade control and mapping, Michelin, 800/ 70 R 38 tires, mounted Johnson tile plow, four boots, (4, 6, 8, & 12 inch boots), heave plates included, power feeder included, shows 8325 service hours. Notes: Item Location: Stanley, IA 50671 Equipment Sold "AS IS, WHERE IS": All equipment/property is sold "AS IS, WHERE IS" with no warranty or guarantees, expressed or implied, No operational assessments or testing have been made by Del Peterson on this item, it has been photographed ONLY.



#164 - 1999 Kenworth W900L (KMK1002)

1999 Kenworth W900L (KMK1002), Cummins N-14 Red Top, 18 speed, heavy duty third axle with duals, Kenworth Aero Cab, BF Goodrich steers and lift axle tires, less than 10,000 miles on them, 24.5 aluminum wheels all the way around, 275/ 80 R 24.5, drive tires 11 R 24.5, head ache rack, dual fuel tanks, air suspension, cruise control, engine break, fifth wheel, inter axle differential, idle control, power and heated mirrors, heat & ac, am/fm/cd radio, shows 677752 miles. Notes: Item Location: Stanley, IA 50671 Equipment Sold "AS IS, WHERE IS": All equipment/property is sold "AS IS, WHERE IS" with no warranty or guarantees, expressed or implied, No operational assessments or testing have been made by Del Peterson on this item, it has been photographed ONLY.



#165 - 1969 CAT D9G W/ CRC Kelly Tile Plow & Boots (KMK1001)

1969 CAT D9G W/ CRC Kelly Tile Plow & Boots (KMK1001), Caterpillar engine, custom 36 inch extreme duty track pads, ROPS, Danfoss valves for laser or GPS control, CRC Kelly tile plow, boots are (4, 6, 8, & 12 inch), boot trailer included, undercarriage is like new, good glass all around, shows 8073 hours. Notes: Exceptionally well maintained and clean, one of a kind machine. Everything works, ready to go to the field. Item Location: Stanley, IA 50671 Equipment Sold "AS IS, WHERE IS": All equipment/property is sold "AS IS, WHERE IS" with no warranty or guarantees, expressed or implied, No operational assessments or testing have been made by Del Peterson on this item, it has been photographed ONLY.



#166 - Laforge Front Mounted 3 Point Hitch (KMK1000)

Laforge Front Mounted 3 Point Hitch (KMK1000), fits MT600D series Challenger tractors, recently rebuilt lift cylinders. Notes: Item Location: Stanley, IA 50671 Equipment Sold "AS IS, WHERE IS": All equipment/property is sold "AS IS, WHERE IS" with no warranty or guarantees, expressed or implied, No operational assessments or testing have been made by Del Peterson on this item, it has been photographed ONLY.



#167 - Amity Technology Truck Mounted Soil Sampler (KMK1008)

Amity Technology Truck Mounted Soil Sampler (KMK1008), Concord Environmental Equipment, ARO fluid power, complete with in cab controls, ss sample catch bucket, optional compressor for blowing tip out between sample points. Notes: Item Location: Stanley, IA 50671 Equipment Sold "AS IS, WHERE IS": All equipment/property is sold "AS IS, WHERE IS" with no warranty or guarantees, expressed or implied, No operational assessments or testing have been made by Del Peterson on this item, it has been photographed ONLY.



#168 - 2014 Kenworth T800 (PD374)

2014 Kenworth T800 (PD374), 475 Paccar Engine, 13 speed, 60 Inch Sleeper, 11R225 Tires 75%, fenders, shows 420,000 miles. Notes: Still in use. Item Location: Cairo, MO 65239 Equipment Sold "AS IS, WHERE IS": All equipment/property is sold "AS IS, WHERE IS" with no warranty or guarantees, expressed or implied, No operational assessments or testing have been made by Del Peterson on this item, it has been photographed ONLY.



#169 - 2015 Kenworth T800 (PD375)

2015 Kenworth T800 (PD375), 475 Paccar Engine, 13 speed, 60 Inch Sleeper, 11R225 Tires 75%, 150 gallon fuel, can sell with wet kit at extra fee or will take off, shows 331,600 miles. Notes: Still in use. Item Location: Cairo, MO 65239 Equipment Sold "AS IS, WHERE IS": All equipment/property is sold "AS IS, WHERE IS" with no warranty or guarantees, expressed or implied, No operational assessments or testing have been made by Del Peterson on this item, it has been photographed ONLY.



#170 - 1992 Ford F350 Dually (EG238)

1992 Ford F350 Dually (EG238), 4 Door, 7.4, 5 speed, Micro lock, rebuilt front end, new front brakes, high speed rear end, AM/FM with remote, sliding rear window, flatbed with gooseneck ball and receiver hitch, runs great, speedometer is inoperable, shows miles. Notes: Speedometer is INOPERABLE. Item Location: Carroll, IA 51401 Equipment Sold "AS IS, WHERE IS": All equipment/property is sold "AS IS, WHERE IS" with no warranty or guarantees, expressed or implied, No operational assessments or testing have been made by Del Peterson on this item, it has been photographed ONLY.



#171 - Vertical Liquid Storage Tank (PZ6324)

Vertical Liquid Storage Tank (PZ6324), Approx. 19,000 gallon vertical steel liquid storage tank, approx. 10'6" diameter. Notes: This tank must be removed by August 1, 2017 with NO exceptions. Dismantle, removal and transportation is at the expense, risk and liability of the buyer. Item Location: Marengo, IA 52301 Equipment Sold "AS IS, WHERE IS": All equipment/property is sold "AS IS, WHERE IS" with no warranty or guarantees, expressed or implied, No operational assessments or testing have been made by Del Peterson on this item, it has been photographed ONLY.



#172 - Vertical Liquid Storage Tank (PZ6325)

Vertical Liquid Storage Tank (PZ6325), Approx. 19,000 gallon vertical steel liquid storage tank, approx. 10'6" diameter. Notes: This tank must be removed by August 1, 2017 with NO exceptions. Dismantle, removal and transportation is at the expense, risk and liability of the buyer. Item Location: Marengo, IA 52301 Equipment Sold "AS IS, WHERE IS": All equipment/property is sold "AS IS, WHERE IS" with no warranty or guarantees, expressed or implied, No operational assessments or testing have been made by Del Peterson on this item, it has been photographed ONLY.



#173 - Vertical Liquid Storage Tank (PZ6326)

Vertical Liquid Storage Tank (PZ6326), Approx. 15,000 gallon vertical steel liquid storage tank, approx. 11' diameter. Notes: This tank must be removed by August 1, 2017 with NO exceptions. Dismantle, removal and transportation is at the expense, risk and liability of the buyer. Item Location: Marengo, IA 52301 Equipment Sold "AS IS, WHERE IS": All equipment/property is sold "AS IS, WHERE IS" with no warranty or guarantees, expressed or implied, No operational assessments or testing have been made by Del Peterson on this item, it has been photographed ONLY.



#174 - Vertical Liquid Storage Tank (PZ6327)

Vertical Liquid Storage Tank (PZ6327), Approx. 15,000 gallon vertical steel liquid storage tank, approx. 11' diameter. Notes: This tank must be removed by August 1, 2017 with NO exceptions. Dismantle, removal and transportation is at the expense, risk and liability of the buyer. Item Location: Marengo, IA 52301 Equipment Sold "AS IS, WHERE IS": All equipment/property is sold "AS IS, WHERE IS" with no warranty or guarantees, expressed or implied, No operational assessments or testing have been made by Del Peterson on this item, it has been photographed ONLY.



#175 - Vertical Liquid Storage Tank (PZ6328)

Vertical Liquid Storage Tank (PZ6328), Approx. 12,000 gallon vertical steel liquid storage tank, approx. 11' diameter. Notes: This tank must be removed by August 1, 2017 with NO exceptions. Dismantle, removal and transportation is at the expense, risk and liability of the buyer. Item Location: Marengo, IA 52301 Equipment Sold "AS IS, WHERE IS": All equipment/property is sold "AS IS, WHERE IS" with no warranty or guarantees, expressed or implied, No operational assessments or testing have been made by Del Peterson on this item, it has been photographed ONLY.



#176 - Vertical Liquid Storage Tank (PZ6329)

Vertical Liquid Storage Tank (PZ6329), Approx. 12,000 gallon vertical steel liquid storage tank, approx. 11' diameter. Notes: This tank must be removed by August 1, 2017 with NO exceptions. Dismantle, removal and transportation is at the expense, risk and liability of the buyer. Item Location: Marengo, IA 52301 Equipment Sold "AS IS, WHERE IS": All equipment/property is sold "AS IS, WHERE IS" with no warranty or guarantees, expressed or implied, No operational assessments or testing have been made by Del Peterson on this item, it has been photographed ONLY.



#177 - Vertical Liquid Storage Tank (PZ6330)

Vertical Liquid Storage Tank (PZ6330), Approx. 6,000 gallon vertical poly liquid storage tank, approx. 8'6" diameter. Notes: This tank must be removed by August 1, 2017 with NO exceptions. Dismantle, removal and transportation is at the expense, risk and liability of the buyer. Item Location: Marengo, IA 52301 Equipment Sold "AS IS, WHERE IS": All equipment/property is sold "AS IS, WHERE IS" with no warranty or guarantees, expressed or implied, No operational assessments or testing have been made by Del Peterson on this item, it has been photographed ONLY.



#178 - 2007 Blu Jet Anhydrous Applicator (EG235)

2007 Blu Jet Anhydrous Applicator (EG235), 16 shank, single raven cooler, John Deere controller, good shape. Notes: Item Location: Hannibal, MO 63401 Equipment Sold "AS IS, WHERE IS": All equipment/property is sold "AS IS, WHERE IS" with no warranty or guarantees, expressed or implied, No operational assessments or testing have been made by Del Peterson on this item, it has been photographed ONLY.



#180 - 50,000 Pound Crane (TC136)

50,000 Pound Crane (TC136), GM diesel engine, no oil leaks, tires in good shape, Notes: Item Location: Sublette, KS 67877 Equipment Sold "AS IS, WHERE IS": All equipment/property is sold "AS IS, WHERE IS" with no warranty or guarantees, expressed or implied, No operational assessments or testing have been made by Del Peterson on this item, it has been photographed ONLY.

#181 - 1962 300 Gallon Anhydrous Tank (TC133)

1962 300 Gallon Anhydrous Tank (TC133), no running gear, data plate. Notes: Item Location: Sublette, KS 67877 Equipment Sold "AS IS, WHERE IS": All equipment/property is sold "AS IS, WHERE IS" with no warranty or guarantees, expressed or implied, No operational assessments or testing have been made by Del Peterson on this item, it has been photographed ONLY.

#182 - 12' Speed Mover Scraper (TC134)

12' Speed Mover Scraper (TC134), hydraulic lift. Notes: Item Location: Sublette, KS 67877 Equipment Sold "AS IS, WHERE IS": All equipment/property is sold "AS IS, WHERE IS" with no warranty or guarantees, expressed or implied, No operational assessments or testing have been made by Del Peterson on this item, it has been photographed ONLY.

#183 - Metal Shear (TC130)

Metal Shear (TC130), fully functional. Notes: Item Location: Sublette, KS 67877 Equipment Sold "AS IS, WHERE IS": All equipment/property is sold "AS IS, WHERE IS" with no warranty or guarantees, expressed or implied, No operational assessments or testing have been made by Del Peterson on this item, it has been photographed ONLY.

#184 - 2007 Freightliner Columbia 112 Truck (PD373)

2007 Freightliner Columbia 112 Truck (PD373), Mercedes Engine, 10 speed transmission, 48 inch , sleeper, 295/75 22.5 tires, shows 749285 miles. Notes: Item Location: Plainfield, IA 50666 Equipment Sold "AS IS, WHERE IS": All equipment/property is sold "AS IS, WHERE IS" with no warranty or guarantees, expressed or implied, No operational assessments or testing have been made by Del Peterson on this item, it has been photographed ONLY.



#185 - 1995 Mack Propane Bobtail CH613 W/ LP Tank (PD318)

1995 Mack Propane Bobtail CH613 W/ LP Tank (PD318), Mack Motor, Eaton Fuller 9 Speed, 3,499 gallon LP tank bottle, tank year 2004, 250 PSI pressure, great running truck, good power, fresh truck alignment, inspections up to date on truck, shows 18,814 hours. Notes: Item Location: Glenville, MN 56036 Equipment Sold "AS IS, WHERE IS": All equipment/property is sold "AS IS, WHERE IS" with no warranty or guarantees, expressed or implied, No operational assessments or testing have been made by Del Peterson on this item, it has been photographed ONLY.



#186 - John Deere Forklift (EG225)

John Deere Forklift (EG225), 22' lift height, hydraulic tilt, hydraulicside shift, hydraulic fork adjuster, 16-9-24 tires, gas and engine runs ok, weak transmission, clutch grinds in gear. Notes: Item Location: Gilman, IL 60938 Equipment Sold "AS IS, WHERE IS": All equipment/property is sold "AS IS, WHERE IS" with no warranty or guarantees, expressed or implied, No operational assessments or testing have been made by Del Peterson on this item, it has been photographed ONLY.



#187 - Stainless Steel Tank 1600 Gallon (EG223)

Stainless Steel Tank 1600 Gallon (EG223), 2" plumbing, has sparging set up, penal hitch pulls nice, no leaks, cracks or welds, 10.00-20 tires. Notes: Item Location: Gilman, IL 60938 Equipment Sold "AS IS, WHERE IS": All equipment/property is sold "AS IS, WHERE IS" with no warranty or guarantees, expressed or implied, No operational assessments or testing have been made by Del Peterson on this item, it has been photographed ONLY.



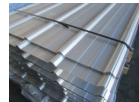
#188 - Buffalo Scraper Model #55001200 (EG242)

Buffalo Scraper Model #55001200 (EG242), dirt pan, hydraulic ejection, very little use, everything works good, needs a paint job. Notes: Item Location: Shelbyville, IN 46176 Equipment Sold "AS IS, WHERE IS": All equipment/property is sold "AS IS, WHERE IS" with no warranty or guarantees, expressed or implied, No operational assessments or testing have been made by Del Peterson on this item, it has been photographed ONLY.



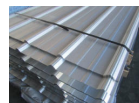
#189 - Metal Siding (DR-6328)

Metal Siding (DR-6328), NEW UNUSED (30) sheets, American made, Galvalume color, 18'-4" long X 36" overlap coverage, Premium Pro Rib Profile style, 29 gauge. ALWAYS stored inside. Meets all USA building material engineering codes for Tested Tolerances for wind & snow. USA stamped seal of approval documentation on all products. Notes: Loadout IS available with flexible appointments. Can also offer hardware, trim, corners at wholesale prices. Item Location: Monroe, NE 68647 Equipment Sold "AS IS, WHERE IS": All equipment/property is sold "AS IS, WHERE IS" with no warranty or guarantees, expressed or implied, No operational assessments or testing have been made by Del Peterson on this item, it has been photographed ONLY.



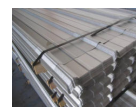
#190 - Metal Siding (DR-6329)

Metal Siding (DR-6329), NEW UNUSED (30) sheets, American made, Galvalume color, 18'-4" long X 36" overlap coverage, Premium Pro Rib Profile style, 29 gauge. ALWAYS stored inside. Meets all USA building material engineering codes for Tested Tolerances for wind & snow. USA stamped seal of approval documentation on all products. Notes: Loadout IS available with flexible appointments. Can also offer hardware, trim, corners at wholesale prices. Item Location: Monroe, NE 68647 Equipment Sold "AS IS, WHERE IS": All equipment/property is sold "AS IS, WHERE IS" with no warranty or guarantees, expressed or implied, No operational assessments or testing have been made by Del Peterson on this item, it has been photographed ONLY.



#191 - Metal Siding (DR-6330)

Metal Siding (DR-6330), NEW UNUSED (30) sheets, American made, Galvalume color, 16'-4" long X 36" overlap coverage, Premium Pro Rib Profile style, 29 gauge. ALWAYS stored inside. Meets all USA building material engineering codes for Tested Tolerances for wind & snow. USA stamped seal of approval documentation on all products. Notes: Loadout IS available with flexible appointments. Can also offer hardware, trim, corners at wholesale prices. Item Location: Monroe, NE 68647 Equipment Sold "AS IS, WHERE IS": All equipment/property is sold "AS IS, WHERE IS" with no warranty or guarantees, expressed or implied, No operational assessments or testing have been made by Del Peterson on this item, it has been photographed ONLY.



#192 - Metal Siding (DR-6331)

Metal Siding (DR-6331), NEW UNUSED (30) sheets, American made, Galvalume color, 16'-4" long X 36" overlap coverage, Premium Pro Rib Profile style, 29 gauge. ALWAYS stored inside. Meets all USA building material engineering codes for Tested Tolerances for wind & snow. USA stamped seal of approval documentation on all products. Notes: Loadout IS available with flexible appointments. Can also offer hardware, trim, corners at wholesale prices. Item Location: Monroe, NE 68647 Equipment Sold "AS IS, WHERE IS": All equipment/property is sold "AS IS, WHERE IS" with no warranty or guarantees, expressed or implied, No operational assessments or testing have been made by Del Peterson on this item, it has been photographed ONLY.



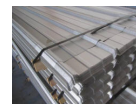
#193 - Metal Siding (DR-6332)

Metal Siding (DR-6332), NEW UNUSED (30) sheets, American made, Galvalume color, 16'-4" long X 36" overlap coverage, Premium Pro Rib Profile style, 29 gauge. ALWAYS stored inside. Meets all USA building material engineering codes for Tested Tolerances for wind & snow. USA stamped seal of approval documentation on all products. Notes: Loadout IS available with flexible appointments. Can also offer hardware, trim, corners at wholesale prices. Item Location: Monroe, NE 68647 Equipment Sold "AS IS, WHERE IS": All equipment/property is sold "AS IS, WHERE IS" with no warranty or guarantees, expressed or implied, No operational assessments or testing have been made by Del Peterson on this item, it has been photographed ONLY.



#194 - Metal Siding (DR-6333)

Metal Siding (DR-6333), NEW UNUSED (30) sheets, American made, Galvalume color, 16'-4" long X 36" overlap coverage, Premium Pro Rib Profile style, 29 gauge. ALWAYS stored inside. Meets all USA building material engineering codes for Tested Tolerances for wind & snow. USA stamped seal of approval documentation on all products. Notes: Loadout IS available with flexible appointments. Can also offer hardware, trim, corners at wholesale prices. Item Location: Monroe, NE 68647 Equipment Sold "AS IS, WHERE IS": All equipment/property is sold "AS IS, WHERE IS" with no warranty or guarantees, expressed or implied, No operational assessments or testing have been made by Del Peterson on this item, it has been photographed ONLY.



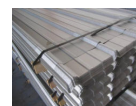
#195 - Metal Siding (DR-6334)

Metal Siding (DR-6334), NEW UNUSED (30) sheets, American made, Galvalume color, 16'-4" long X 36" overlap coverage, Premium Pro Rib Profile style, 29 gauge. ALWAYS stored inside. Meets all USA building material engineering codes for Tested Tolerances for wind & snow. USA stamped seal of approval documentation on all products. Notes: Loadout IS available with flexible appointments. Can also offer hardware, trim, corners at wholesale prices. Item Location: Monroe, NE 68647 Equipment Sold "AS IS, WHERE IS": All equipment/property is sold "AS IS, WHERE IS" with no warranty or guarantees, expressed or implied, No operational assessments or testing have been made by Del Peterson on this item, it has been photographed ONLY.



#196 - Metal Siding (DR-6335)

Metal Siding (DR-6335), NEW UNUSED (30) sheets, American made, Galvalume color, 16'-4" long X 36" overlap coverage, Premium Pro Rib Profile style, 29 gauge. ALWAYS stored inside. Meets all USA building material engineering codes for Tested Tolerances for wind & snow. USA stamped seal of approval documentation on all products. Notes: Loadout IS available with flexible appointments. Can also offer hardware, trim, corners at wholesale prices. Item Location: Monroe, NE 68647 Equipment Sold "AS IS, WHERE IS": All equipment/property is sold "AS IS, WHERE IS" with no warranty or guarantees, expressed or implied, No operational assessments or testing have been made by Del Peterson on this item, it has been photographed ONLY.



#197 - Metal Siding (DR-6336)

Metal Siding (DR-6336), NEW UNUSED (70) sheets, American made, White color, 10' long X 36" overlap coverage, Premium Pro Rib Profile style, 29 gauge. ALWAYS stored inside. Meets all USA building material engineering codes for Tested Tolerances for wind & snow. USA stamped seal of approval documentation on all products. Notes: Loadout IS available with flexible appointments. Can also offer hardware, trim, corners at wholesale prices. Item Location: Monroe, NE 68647 Equipment Sold "AS IS, WHERE IS": All equipment/property is sold "AS IS, WHERE IS" with no warranty or guarantees, expressed or implied, No operational assessments or testing have been made by Del Peterson on this item, it has been photographed ONLY.



#198 - Metal Siding (DR-6337)

Metal Siding (DR-6337), NEW UNUSED (70) sheets, American made, White color, 10' long X 36" overlap coverage, Premium Pro Rib Profile style, 29 gauge. ALWAYS stored inside. Meets all USA building material engineering codes for Tested Tolerances for wind & snow. USA stamped seal of approval documentation on all products. Notes: Loadout IS available with flexible appointments. Can also offer hardware, trim, corners at wholesale prices. Item Location: Monroe, NE 68647 Equipment Sold "AS IS, WHERE IS": All equipment/property is sold "AS IS, WHERE IS" with no warranty or guarantees, expressed or implied, No operational assessments or testing have been made by Del Peterson on this item, it has been photographed ONLY.



#199 - Metal Siding (DR-6338)

Metal Siding (DR-6338), NEW UNUSED (70) sheets, American made, White color, 10' long X 36" overlap coverage, Premium Pro Rib Profile style, 29 gauge. ALWAYS stored inside. Meets all USA building material engineering codes for Tested Tolerances for wind & snow. USA stamped seal of approval documentation on all products. Notes: Loadout IS available with flexible appointments. Can also offer hardware, trim, corners at wholesale prices. Item Location: Monroe, NE 68647 Equipment Sold "AS IS, WHERE IS": All equipment/property is sold "AS IS, WHERE IS" with no warranty or guarantees, expressed or implied, No operational assessments or testing have been made by Del Peterson on this item, it has been photographed ONLY.



#200 - Metal Siding (DR-6339)

Metal Siding (DR-6339), NEW UNUSED (70) sheets, American made, White color, 10' long X 36" overlap coverage, Premium Pro Rib Profile style, 29 gauge. ALWAYS stored inside. Meets all USA building material engineering codes for Tested Tolerances for wind & snow. USA stamped seal of approval documentation on all products. Notes: Loadout IS available with flexible appointments. Can also offer hardware, trim, corners at wholesale prices. Item Location: Monroe, NE 68647 Equipment Sold "AS IS, WHERE IS": All equipment/property is sold "AS IS, WHERE IS" with no warranty or guarantees, expressed or implied, No operational assessments or testing have been made by Del Peterson on this item, it has been photographed ONLY.



#201 - Metal Siding (DR-6340)

Metal Siding (DR-6340), NEW UNUSED (30) sheets, American made, Charcoal color, 16' long X 36" overlap coverage, Premium Pro Rib Profile style, 29 gauge. ALWAYS stored inside. Meets all USA building material engineering codes for Tested Tolerances for wind & snow. USA stamped seal of approval documentation on all products. Notes: Loadout IS available with flexible appointments. Can also offer hardware, trim, corners at wholesale prices. Item Location: Monroe, NE 68647 Equipment Sold "AS IS, WHERE IS": All equipment/property is sold "AS IS, WHERE IS" with no warranty or guarantees, expressed or implied, No operational assessments or testing have been made by Del Peterson on this item, it has been photographed ONLY.



#202 - Metal Siding (DR-6341)

Metal Siding (DR-6341), NEW UNUSED (30) sheets, American made, Charcoal color, 16' long X 36" overlap coverage, Premium Pro Rib Profile style, 29 gauge. ALWAYS stored inside. Meets all USA building material engineering codes for Tested Tolerances for wind & snow. USA stamped seal of approval documentation on all products. Notes: Loadout IS available with flexible appointments. Can also offer hardware, trim, corners at wholesale prices. Item Location: Monroe, NE 68647 Equipment Sold "AS IS, WHERE IS": All equipment/property is sold "AS IS, WHERE IS" with no warranty or guarantees, expressed or implied, No operational assessments or testing have been made by Del Peterson on this item, it has been photographed ONLY.



#203 - Metal Siding (DR-6342)

Metal Siding (DR-6342), NEW UNUSED (30) sheets, American made, Charcoal color, 16' long X 36" overlap coverage, Premium Pro Rib Profile style, 29 gauge. ALWAYS stored inside. Meets all USA building material engineering codes for Tested Tolerances for wind & snow. USA stamped seal of approval documentation on all products. Notes: Loadout IS available with flexible appointments. Can also offer hardware, trim, corners at wholesale prices. Item Location: Monroe, NE 68647 Equipment Sold "AS IS, WHERE IS": All equipment/property is sold "AS IS, WHERE IS" with no warranty or guarantees, expressed or implied, No operational assessments or testing have been made by Del Peterson on this item, it has been photographed ONLY.



#204 - Metal Siding (DR-6343)

Metal Siding (DR-6343), NEW UNUSED (30) sheets, American made, Charcoal color, 16' long X 36" overlap coverage, Premium Pro Rib Profile style, 29 gauge. ALWAYS stored inside. Meets all USA building material engineering codes for Tested Tolerances for wind & snow. USA stamped seal of approval documentation on all products. Notes: Loadout IS available with flexible appointments. Can also offer hardware, trim, corners at wholesale prices. Item Location: Monroe, NE 68647 Equipment Sold "AS IS, WHERE IS": All equipment/property is sold "AS IS, WHERE IS" with no warranty or guarantees, expressed or implied, No operational assessments or testing have been made by Del Peterson on this item, it has been photographed ONLY.



#205 - 2017 6.7KW Solar System (DR6344)

2017 6.7KW Solar System (DR6344), solar system kit, 6.7 kW, all USA materials, meets N.E.T. metering laws, wind hail & snow tolerant, 25 year manufacturers warranty on solar panels, UL rated, (20) Suniva 72 cell mono panels-330/340 watt, Solectra 6600TL inverter-240/208 VAC, NEW UNUSED, aluminum rack system hardware, 3" pipe or mounting components for ground mount/roof mount system NOT included, kit is not assembled, available for 30% federal tax credit. This hardware is available for roof mount. Shipping is available. Check web site www.renewablesolarllc.com. Notes: Load out is FREE, shipping contacts are available. Item Location: Monroe, NE 68647 Equipment Sold "AS IS, WHERE IS": All equipment/property is sold "AS IS, WHERE IS" with no warranty or guarantees, expressed or implied, No operational assessments or testing have been made by Del Peterson on this item, it has been photographed ONLY.



#206 - 50 Foot Stainless Steel Elevator Leg (PD329)

50 Foot Stainless Steel Elevator Leg (PD329), great shape except the boot needs some minor repair. Notes: Item Location: Hulbert, OK 74441 Equipment Sold "AS IS, WHERE IS": All equipment/property is sold "AS IS, WHERE IS" with no warranty or guarantees, expressed or implied, No operational assessments or testing have been made by Del Peterson on this item, it has been photographed ONLY.



#207 - Elevator Cups (PD344)

Elevator Cups (PD344). Notes: Item Location: Hulbert, OK 74441 Equipment Sold "AS IS, WHERE IS": All equipment/property is sold "AS IS, WHERE IS" with no warranty or guarantees, expressed or implied, No operational assessments or testing have been made by Del Peterson on this item, it has been photographed ONLY.



#208 - Boulder And Lawson Belt Conveyor (PD346)

Boulder And Lawson Belt Conveyor (PD346), 14 foot, hardly used. Notes: Item Location: Hulbert, OK 74441 Equipment Sold "AS IS, WHERE IS": All equipment/property is sold "AS IS, WHERE IS" with no warranty or guarantees, expressed or implied, No operational assessments or testing have been made by Del Peterson on this item, it has been photographed ONLY.



#209 - 25 Foot Belt Conveyor (PD352)

25 Foot Belt Conveyor (PD352), needs a little repair. Notes: Item Location: Hulbert, OK 74441 Equipment Sold "AS IS, WHERE IS": All equipment/property is sold "AS IS, WHERE IS" with no warranty or guarantees, expressed or implied, No operational assessments or testing have been made by Del Peterson on this item, it has been photographed ONLY.



#210 - Plastic Elevator Cups (PD367)

Plastic Elevator Cups (PD367), used. Notes: Item Location: Hulbert, OK 74441 Equipment Sold "AS IS, WHERE IS": All equipment/property is sold "AS IS, WHERE IS" with no warranty or guarantees, expressed or implied, No operational assessments or testing have been made by Del Peterson on this item, it has been photographed ONLY.



#211 - Elevator Leg Belting (PD368)

Elevator Leg Belting (PD368). Notes: Item Location: Hulbert, OK 74441 Equipment Sold "AS IS, WHERE IS": All equipment/property is sold "AS IS, WHERE IS" with no warranty or guarantees, expressed or implied, No operational assessments or testing have been made by Del Peterson on this item, it has been photographed ONLY.



#212 - 2 Elevator Pulleys (PD372)

2 Elevator Pulleys (PD372), used. Notes: Item Location: Hulbert, OK 74441 Equipment Sold "AS IS, WHERE IS": All equipment/property is sold "AS IS, WHERE IS" with no warranty or guarantees, expressed or implied, No operational assessments or testing have been made by Del Peterson on this item, it has been photographed ONLY.



#213 - CPM W/ Feed Chamber And Auger (PD325)

CPM W/ Feed Chamber And Auger (PD325), 100 Horse Power, machine works well, door needs repair. Notes: Item Location: Hulbert, OK 74441 Equipment Sold "AS IS, WHERE IS": All equipment/property is sold "AS IS, WHERE IS" with no warranty or guarantees, expressed or implied, No operational assessments or testing have been made by Del Peterson on this item, it has been photographed ONLY.



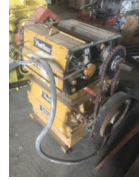
#214 - Roskamp Double Pair Roller Mill Model K6904 (PD334)

Roskamp Double Pair Roller Mill Model K6904 (PD334). Notes: Item Location: Hulbert, OK 74441 Equipment Sold "AS IS, WHERE IS": All equipment/property is sold "AS IS, WHERE IS" with no warranty or guarantees, expressed or implied, No operational assessments or testing have been made by Del Peterson on this item, it has been photographed ONLY.



#215 - Peerless Double Pair Roller Mill Model 20095 (PD333)

Peerless Double Pair Roller Mill Model 20095 (PD333). Notes: Item Location: Hulbert, OK 74441 Equipment Sold "AS IS, WHERE IS": All equipment/property is sold "AS IS, WHERE IS" with no warranty or guarantees, expressed or implied, No operational assessments or testing have been made by Del Peterson on this item, it has been photographed ONLY.



#216 - CPM Counterflow Cooler 1400 Series (PD328)

CPM Counterflow Cooler 1400 Series (PD328), Stainless Steel, in good condition. Notes: Item Location: Hulbert, OK 74441 Equipment Sold "AS IS, WHERE IS": All equipment/property is sold "AS IS, WHERE IS" with no warranty or guarantees, expressed or implied, No operational assessments or testing have been made by Del Peterson on this item, it has been photographed ONLY.



#217 - 2 Brand New Roller Shells And Roller Holders For Pellet Mill (PD343)

2 Brand New Roller Shells And Roller Holders For Pellet Mill (PD343). Notes: Item Location: Hulbert, OK 74441 Equipment Sold "AS IS, WHERE IS": All equipment/property is sold "AS IS, WHERE IS" with no warranty or guarantees, expressed or implied, No operational assessments or testing have been made by Del Peterson on this item, it has been photographed ONLY.



#218 - CPM Pellet Mill 100 Horse Power (PD341)

CPM Pellet Mill 100 Horse Power (PD341), Has broken quill but new one on top, needs to be reassembled, mill works and gears are good. Notes: Item Location: Hulbert, OK 74441 Equipment Sold "AS IS, WHERE IS": All equipment/property is sold "AS IS, WHERE IS" with no warranty or guarantees, expressed or implied, No operational assessments or testing have been made by Del Peterson on this item, it has been photographed ONLY.



#219 - CPM Stand And Motor With Down Spout (PD342)

CPM Stand And Motor With Down Spout (PD342), 125 Horse Power Motor. Notes: Item Location: Hulbert, OK 74441 Equipment Sold "AS IS, WHERE IS": All equipment/property is sold "AS IS, WHERE IS" with no warranty or guarantees, expressed or implied, No operational assessments or testing have been made by Del Peterson on this item, it has been photographed ONLY.



#220 - Pellet Mill Chamber Stainless Steel (PD340)

Pellet Mill Chamber Stainless Steel (PD340), brand new stainless steel paddles, needs to be assembled. Notes: Item Location: Hulbert, OK 74441 Equipment Sold "AS IS, WHERE IS": All equipment/property is sold "AS IS, WHERE IS" with no warranty or guarantees, expressed or implied, No operational assessments or testing have been made by Del Peterson on this item, it has been photographed ONLY.



#221 - Davis 2 Ton Mixer (PD338)

Davis 2 Ton Mixer (PD338). Notes: Item Location: Hulbert, OK 74441 Equipment Sold "AS IS, WHERE IS": All equipment/property is sold "AS IS, WHERE IS" with no warranty or guarantees, expressed or implied, No operational assessments or testing have been made by Del Peterson on this item, it has been photographed ONLY.



#222 - Single Pair Roller Mill (PD351)

Single Pair Roller Mill (PD351), extra set of rolls. Notes: Item Location: Hulbert, OK 74441 Equipment Sold "AS IS, WHERE IS": All equipment/property is sold "AS IS, WHERE IS" with no warranty or guarantees, expressed or implied, No operational assessments or testing have been made by Del Peterson on this item, it has been photographed ONLY.



#223 - Reeves Drives And Motors (PD347)

Reeves Drives And Motors (PD347), variable speed. Notes: Item Location: Hulbert, OK 74441 Equipment Sold "AS IS, WHERE IS": All equipment/property is sold "AS IS, WHERE IS" with no warranty or guarantees, expressed or implied, No operational assessments or testing have been made by Del Peterson on this item, it has been photographed ONLY.



#224 - Used Motors (PD348)

Used Motors (PD348), good working motors. Notes: Item Location: Hulbert, OK 74441 Equipment Sold "AS IS, WHERE IS": All equipment/property is sold "AS IS, WHERE IS" with no warranty or guarantees, expressed or implied, No operational assessments or testing have been made by Del Peterson on this item, it has been photographed ONLY.



#225 - Davis 2 Ton Mixer & Motor (PD349)

Davis 2 Ton Mixer & Motor (PD349). Notes: Item Location: Hulbert, OK 74441 Equipment Sold "AS IS, WHERE IS": All equipment/property is sold "AS IS, WHERE IS" with no warranty or guarantees, expressed or implied, No operational assessments or testing have been made by Del Peterson on this item, it has been photographed ONLY.



#226 - Big Chief Grinder & Separator (PD350)

Big Chief Grinder & Separator (PD350). Notes: Item Location: Hulbert, OK 74441 Equipment Sold "AS IS, WHERE IS": All equipment/property is sold "AS IS, WHERE IS" with no warranty or guarantees, expressed or implied, No operational assessments or testing have been made by Del Peterson on this item, it has been photographed ONLY.



#227 - Sweet Feed Auger Blender (PD358)

Sweet Feed Auger Blender (PD358), needs repair on trough on one end with gear box. Notes: Item Location: Hulbert, OK 74441 Equipment Sold "AS IS, WHERE IS": All equipment/property is sold "AS IS, WHERE IS" with no warranty or guarantees, expressed or implied, No operational assessments or testing have been made by Del Peterson on this item, it has been photographed ONLY.



#228 - Small Cyclone (PD353)

Small Cyclone (PD353). Notes: Item Location: Hulbert, OK 74441 Equipment Sold "AS IS, WHERE IS": All equipment/property is sold "AS IS, WHERE IS" with no warranty or guarantees, expressed or implied, No operational assessments or testing have been made by Del Peterson on this item, it has been photographed ONLY.



#229 - Schalgel Stainless Steel Turn Head (PD354)

Schalgel Stainless Steel Turn Head (PD354), 3 hole, 10 inch. Notes: Item Location: Hulbert, OK 74441 Equipment Sold "AS IS, WHERE IS": All equipment/property is sold "AS IS, WHERE IS" with no warranty or guarantees, expressed or implied, No operational assessments or testing have been made by Del Peterson on this item, it has been photographed ONLY.



#230 - Stainless Steel Turn Head (PD355)

Stainless Steel Turn Head (PD355), 8 inch. Notes: Item Location: Hulbert, OK 74441 Equipment Sold "AS IS, WHERE IS": All equipment/property is sold "AS IS, WHERE IS" with no warranty or guarantees, expressed or implied, No operational assessments or testing have been made by Del Peterson on this item, it has been photographed ONLY.



#231 - Flat Back Turn Head (PD356)

Flat Back Turn Head (PD356), 8 hole, 8 inch. Notes: Item Location: Hulbert, OK 74441 Equipment Sold "AS IS, WHERE IS": All equipment/property is sold "AS IS, WHERE IS" with no warranty or guarantees, expressed or implied, No operational assessments or testing have been made by Del Peterson on this item, it has been photographed ONLY.



#232 - Short Sweet Feed Auger & Motor Gear Box (PD359)

Short Sweet Feed Auger & Motor Gear Box (PD359). Notes: Item Location: Hulbert, OK 74441 Equipment Sold "AS IS, WHERE IS": All equipment/property is sold "AS IS, WHERE IS" with no warranty or guarantees, expressed or implied, No operational assessments or testing have been made by Del Peterson on this item, it has been photographed ONLY.



#233 - Set of Three 12 Inch Augers (PD360)

Set of Three 12 Inch Augers (PD360). Notes: Item Location: Hulbert, OK 74441 Equipment Sold "AS IS, WHERE IS": All equipment/property is sold "AS IS, WHERE IS" with no warranty or guarantees, expressed or implied, No operational assessments or testing have been made by Del Peterson on this item, it has been photographed ONLY.



#234 - Stainless Steel Screen Separator (PD357)

Stainless Steel Screen Separator (PD357). Notes: Item Location: Hulbert, OK 74441 Equipment Sold "AS IS, WHERE IS": All equipment/property is sold "AS IS, WHERE IS" with no warranty or guarantees, expressed or implied, No operational assessments or testing have been made by Del Peterson on this item, it has been photographed ONLY.



#235 - Set of Three 9 Inch Augers (PD362)

Set of Three 9 Inch Augers (PD362). Notes: Item Location: Hulbert, OK 74441 Equipment Sold "AS IS, WHERE IS": All equipment/property is sold "AS IS, WHERE IS" with no warranty or guarantees, expressed or implied, No operational assessments or testing have been made by Del Peterson on this item, it has been photographed ONLY.



#236 - 40 Foot 10 Inch Auger With Motor (PD363)

40 Foot 10 Inch Auger With Motor (PD363), In great shape. Notes: Item Location: Hulbert, OK 74441 Equipment Sold "AS IS, WHERE IS": All equipment/property is sold "AS IS, WHERE IS" with no warranty or guarantees, expressed or implied, No operational assessments or testing have been made by Del Peterson on this item, it has been photographed ONLY.



#237 - Sweet Feed Auger Blender Motor & Gear Box (PD364)

Sweet Feed Auger Blender Motor & Gear Box (PD364). Notes: Item Location: Hulbert, OK 74441 Equipment Sold "AS IS, WHERE IS": All equipment/property is sold "AS IS, WHERE IS" with no warranty or guarantees, expressed or implied, No operational assessments or testing have been made by Del Peterson on this item, it has been photographed ONLY.



#238 - 9 Inch U Trough Auger (PD365)

9 Inch U Trough Auger (PD365). Notes: Item Location: Hulbert, OK 74441 Equipment Sold "AS IS, WHERE IS": All equipment/property is sold "AS IS, WHERE IS" with no warranty or guarantees, expressed or implied, No operational assessments or testing have been made by Del Peterson on this item, it has been photographed ONLY.



#239 - Rollers Spouting Connections (PD366)

Rollers Spouting Connections (PD366), miscellaneous parts for mill. Notes: Item Location: Hulbert, OK 74441 Equipment Sold "AS IS, WHERE IS": All equipment/property is sold "AS IS, WHERE IS" with no warranty or guarantees, expressed or implied, No operational assessments or testing have been made by Del Peterson on this item, it has been photographed ONLY.



#240 - Miscellaneous U Trough & Spouting (PD361)

Miscellaneous U Trough & Spouting (PD361). Notes: Item Location: Hulbert, OK 74441 Equipment Sold "AS IS, WHERE IS": All equipment/property is sold "AS IS, WHERE IS" with no warranty or guarantees, expressed or implied, No operational assessments or testing have been made by Del Peterson on this item, it has been photographed ONLY.



#241 - MisMontgomery Ward Model WR9A Hammer Mill With Motor (PD371)

Montgomery Ward Model WR9A Hammer Mill With Motor (PD371). Notes: Item Location: Hulbert, OK 74441 Equipment Sold "AS IS, WHERE IS": All equipment/property is sold "AS IS, WHERE IS" with no warranty or guarantees, expressed or implied, No operational assessments or testing have been made by Del Peterson on this item, it has been photographed ONLY.



#242 - Fulton Fuel-Fired Steam Boiler (PD379)

Fulton Fuel-Fired Steam Boiler (PD379). Notes: Item Location: Hulbert, OK 74441 Equipment Sold "AS IS, WHERE IS": All equipment/property is sold "AS IS, WHERE IS" with no warranty or guarantees, expressed or implied, No operational assessments or testing have been made by Del Peterson on this item, it has been photographed ONLY.



#243 - Control Box AB Starters (PD335)

Control Box AB Starters (PD335), 2 number 5 starters, one has a soft start. Notes: Item Location: Hulbert, OK 74441 Equipment Sold "AS IS, WHERE IS": All equipment/property is sold "AS IS, WHERE IS" with no warranty or guarantees, expressed or implied, No operational assessments or testing have been made by Del Peterson on this item, it has been photographed ONLY.



#244 - Large Control Box With Starters In It (PD336)

Large Control Box With Starters In It (PD336), 0's, 1's and 2's starters. Notes: Item Location: Hulbert, OK 74441 Equipment Sold "AS IS, WHERE IS": All equipment/property is sold "AS IS, WHERE IS" with no warranty or guarantees, expressed or implied, No operational assessments or testing have been made by Del Peterson on this item, it has been photographed ONLY.



#245 - 230 Feet Down Spotting 8 Inch (PD332)

230 Feet Down Spotting 8 Inch (PD332), good heavy wall. Notes: Item Location: Hulbert, OK 74441 Equipment Sold "AS IS, WHERE IS": All equipment/property is sold "AS IS, WHERE IS" with no warranty or guarantees, expressed or implied, No operational assessments or testing have been made by Del Peterson on this item, it has been photographed ONLY.



#246 - 100 Horse Power Motor (PD326)

100 Horse Power Motor (PD326). Notes: Item Location: Hulbert, OK 74441 Equipment Sold "AS IS, WHERE IS": All equipment/property is sold "AS IS, WHERE IS" with no warranty or guarantees, expressed or implied, No operational assessments or testing have been made by Del Peterson on this item, it has been photographed ONLY.



#247 - Used Pellet And Cube Dies (PD327)

Used Pellet And Cube Dies (PD327). Notes: Item Location: Hulbert, OK 74441 Equipment Sold "AS IS, WHERE IS": All equipment/property is sold "AS IS, WHERE IS" with no warranty or guarantees, expressed or implied, No operational assessments or testing have been made by Del Peterson on this item, it has been photographed ONLY.



#248 - New Tubes For Clever Brooks Boiler (PD345)

New Tubes For Clever Brooks Boiler (PD345). Notes: Item Location: Hulbert, OK 74441 Equipment Sold "AS IS, WHERE IS": All equipment/property is sold "AS IS, WHERE IS" with no warranty or guarantees, expressed or implied, No operational assessments or testing have been made by Del Peterson on this item, it has been photographed ONLY.



#249 - Clever Brooks Boiler 40 Horse Power (PD339)

Clever Brooks Boiler 40 Horse Power (PD339). Notes: Item Location: Hulbert, OK 74441 Equipment Sold "AS IS, WHERE IS": All equipment/property is sold "AS IS, WHERE IS" with no warranty or guarantees, expressed or implied, No operational assessments or testing have been made by Del Peterson on this item, it has been photographed ONLY.



#250 - 340 Feet 8 Inch Down Spouting (PD331)

340 Feet 8 Inch Down Spouting (PD331). Notes: Item Location: Hulbert, OK 74441 Equipment Sold "AS IS, WHERE IS": All equipment/property is sold "AS IS, WHERE IS" with no warranty or guarantees, expressed or implied, No operational assessments or testing have been made by Del Peterson on this item, it has been photographed ONLY.



#251 - 60 Foot Miscellaneous 8 Inch Down Spout (PD330)

60 Foot Miscellaneous 8 Inch Down Spout (PD330). Notes: Item Location: Hulbert, OK 74441 Equipment Sold "AS IS, WHERE IS": All equipment/property is sold "AS IS, WHERE IS" with no warranty or guarantees, expressed or implied, No operational assessments or testing have been made by Del Peterson on this item, it has been photographed ONLY.



#252 - Chain Hoist (PD369)

Chain Hoist (PD369). Notes: Item Location: Hulbert, OK 74441 Equipment Sold "AS IS, WHERE IS": All equipment/property is sold "AS IS, WHERE IS" with no warranty or guarantees, expressed or implied, No operational assessments or testing have been made by Del Peterson on this item, it has been photographed ONLY.



#253 - Gear Box & Air Valve Lock (PD370)

Gear Box & Air Valve Lock (PD370). Notes: Item Location: Hulbert, OK 74441 Equipment Sold "AS IS, WHERE IS": All equipment/property is sold "AS IS, WHERE IS" with no warranty or guarantees, expressed or implied, No operational assessments or testing have been made by Del Peterson on this item, it has been photographed ONLY.



#254 - 20 Foot Stainless Steel Elevator Leg (PD337)

20 Foot Stainless Steel Elevator Leg (PD337), 2 extra sections. Notes: Item Location: Hulbert, OK 74441 Equipment Sold "AS IS, WHERE IS": All equipment/property is sold "AS IS, WHERE IS" with no warranty or guarantees, expressed or implied, No operational assessments or testing have been made by Del Peterson on this item, it has been photographed ONLY.



#255 - 2013 Timppe Grain Trailer (MH179)

2013 Timppe Grain Trailer (MH179), 40x102x78, tandem axle, air ride suspension, aluminum rims, super hopper bottom grain trailer, extra large doors, portable air actuated vibrator, high & low speed door opener, aluminum inserts in the rear and corners, Shurloc roll over tarp. Notes: Due to buyer performance, this item is being resold, can email video of trailer in action. Item Location: Anchor, IL 61720 Equipment Sold "AS IS, WHERE IS": All equipment/property is sold "AS IS, WHERE IS" with no warranty or guarantees, expressed or implied, No operational assessments or testing have been made by Del Peterson on this item, it has been photographed ONLY.



#256 - 2013 Timppe Grain Trailer (MH180)

2013 Timppe Grain Trailer (MH180), 40x96x78, tandem axle, air ride suspension, 285/75R24.5 tires, aluminum rims, super hopper bottom grain trailer, aluminum rear frame, aluminum inserts in front & rear panels, rear pressure gauge, vibrator brackets & vibrator included, Shurlock roll over tarp with wind resist bungee straps. Notes: Due to buyer performance, this item is being resold, can email video of trailer in action. Item Location: Anchor, IL 61720 Equipment Sold "AS IS, WHERE IS": All equipment/property is sold "AS IS, WHERE IS" with no warranty or guarantees, expressed or implied, No operational assessments or testing have been made by Del Peterson on this item, it has been photographed ONLY.



#257 - 1999 Double Drop Lowboy Trailer (MH182)

1999 Double Drop Lowboy Trailer (MH182), Trail King trailer, tandem axle, air ride suspension, aluminum rims, mechanical detach trailer, ground barring, 28' center well. Notes: Due to buyer performance, this item is being resold. Item Location: Anchor, IL 61720 Equipment Sold "AS IS, WHERE IS": All equipment/property is sold "AS IS, WHERE IS" with no warranty or guarantees, expressed or implied, No operational assessments or testing have been made by Del Peterson on this item, it has been photographed ONLY.



#258 - 2009 IHC Prostar Truck (MH181)

2009 IHC Prostar Truck (MH181), Cummins 450HP diesel engine, Eaton Fuller 10-speed transmission, AM/FM CD Stereo, stand up sleeper, air conditioning/heat in sleeper, 11R24.5 tires, aluminum outside rims, cruise control, air horn & engine brake on steering wheel, power windows and locks, tandem axle, full screw, air ride suspension, air slide 5th wheel, shows 643823 miles. Notes: Due to buyer performance, this item is being resold. Item Location: Anchor, IL 61720 Equipment Sold "AS IS, WHERE IS": All equipment/property is sold "AS IS, WHERE IS" with no warranty or guarantees, expressed or implied, No operational assessments or testing have been made by Del Peterson on this item, it has been photographed ONLY.



#259 - Clark C25CL Forklift (NP4978)

Clark C25CL Forklift (NP4978), 5,000lb capacity, (3) stage mast, LP with 1 tank, 48" forks, cushion tires, shows 14,000 hours. Notes: Some new parts, runs well, easy to service. Item Location: Galva, IL 61434 Equipment Sold "AS IS, WHERE IS": All equipment/property is sold "AS IS, WHERE IS" with no warranty or guarantees, expressed or implied, No operational assessments or testing have been made by Del Peterson on this item, it has been photographed ONLY.



#260 - 2005 Impala LS Sedan (TR3481)

2005 Impala LS Sedan (TR3481), Gas engine, automatic transmission, steering wheel controls, AM/FM CD cassette, radio, Heat/AC, Power windows/locks/seats, leather interior, heated seats, sun roof, 101,253 miles. Notes: Tire sensor light is on, car has a cracked windshield. Item Location: Fremont, NE 68025 Equipment Sold "AS IS, WHERE IS": All equipment/property is sold "AS IS, WHERE IS" with no warranty or guarantees, expressed or implied, No operational assessments or testing have been made by Del Peterson on this item, it has been photographed ONLY.



#261 - 2005 GMC Yukon XL (TR 3482)

2005 GMC Yukon XL (TR 3482), Gas engine, automatic transmission, 4x4, Heat/AC, CD Mp3 radio, power seats, Bose speaker, Cabelas Floor mats, leather interior, 157,661 miles. Notes: No 3rd row seats, tire sensor light is on, air bag service light is on. Item Location: Fremont, NE 68025 Equipment Sold "AS IS, WHERE IS": All equipment/property is sold "AS IS, WHERE IS" with no warranty or guarantees, expressed or implied, No operational assessments or testing have been made by Del Peterson on this item, it has been photographed ONLY.



#262 - 2005 GMC Yukon Denali (TR3483)

2005 GMC Yukon Denali (TR3483), gas engine, automatic transmission, 4x4, heat, AC, AM/FM CD player, 6 disc changer, DVD player, leather interior, sun roof, 3rd row seating, heated seats in rear and front, Navigation, 180,642 miles. Notes: Air bag light is on, tire sensor light is on. Item Location: Fremont, NE 68025 Equipment Sold "AS IS, WHERE IS": All equipment/property is sold "AS IS, WHERE IS" with no warranty or guarantees, expressed or implied, No operational assessments or testing have been made by Del Peterson on this item, it has been photographed ONLY.



#263 - 2005 Chevrolet Suburban LT (TR3484)

2005 Chevrolet Suburban LT (TR3484), gas engine, automatic transmission, 4x4, heat, AC, AM/FM CD player, DVD player, leather interior, sun roof, 3rd row seating, heated and power seats, steering wheel controls, 196,369 miles. Notes: Tire sensor light is on, cracked windshield, air bag light is on. Item Location: Fremont, NE 68025 Equipment Sold "AS IS, WHERE IS": All equipment/property is sold "AS IS, WHERE IS" with no warranty or guarantees, expressed or implied, No operational assessments or testing have been made by Del Peterson on this item, it has been photographed ONLY.



#264 - 2006 GMC Envoy SLT (TR3485)

2006 GMC Envoy SLT (TR3485), gas engine, automatic transmission, 4x4, heat, AC, AM/FM CD player, DVD player, leather interior, sun roof, heated and power seats, steering wheel controls, 163,810 miles. Notes: Tire sensor light is on. Item Location: Fremont, NE 68025 Equipment Sold "AS IS, WHERE IS": All equipment/property is sold "AS IS, WHERE IS" with no warranty or guarantees, expressed or implied, No operational assessments or testing have been made by Del Peterson on this item, it has been photographed ONLY.



#265 - 2006 Chevrolet Equinox LT (TR3486)

2006 Chevrolet Equinox LT (TR3486), gas engine, automatic transmission, AWD, heat, AC, AM/FM CD player, leather interior, power seat/windows/locks, 135,401 miles. Notes: Brakes are bad. Item Location: Fremont, NE 68025 Equipment Sold "AS IS, WHERE IS": All equipment/property is sold "AS IS, WHERE IS" with no warranty or guarantees, expressed or implied, No operational assessments or testing have been made by Del Peterson on this item, it has been photographed ONLY.



#266 - 2003 Chevrolet 2500HD (TR3487)

2003 Chevrolet 2500HD (TR3487), Duramax 6.6 L Diesel engine, crew cab, automatic transmission, leather interior, AM/FM CD, Heat/AC, Dual temperature, spray in bed liner, power seats/locks/windows, Bose speakers, heated seats, 261,894 miles. Notes: Tire sensor light is on. Item Location: Fremont, NE 68025 Equipment Sold "AS IS, WHERE IS": All equipment/property is sold "AS IS, WHERE IS" with no warranty or guarantees, expressed or implied, No operational assessments or testing have been made by Del Peterson on this item, it has been photographed ONLY.

