

Auction catalog

Title	Online Auction July 18, 2017 10AM Central
Description	The following line of Fertilizer, Farm Implement, Truck, Trailer & Construction Equipment will be sold online with the bidding ending on July 18, 2017. Location of the equipment is given. Bidding within the last minute before the closing of a lot will extend the bidding time by an additional minute. Be prepared to bid accordingly. For more information, contact Del Peterson & Associates: 419 West Judy Drive Fremont NE, 68025 Phone: 800-492-9090 or 402-721-4388 Fax: 402-721-4583 E-mail: auction@delpeterson.com
Date	Tue, Jul 18, 2017
Starts at	10:00 AM
Address	PO Box 654, Fremont, NE 68026 USA
Categories	

#1 - NH3 Water Tanks (PZ6277)

NH3 Water Tanks (PZ6277), NH3 safty water tanks. Notes: Item Location: Onida, SD 57564 Equipment Sold "AS IS, WHERE IS": All equipment/property is sold "AS IS, WHERE IS" with no warranty or guarantees, expressed or implied, No operational assessments or testing have been made by Del Peterson on this item, it has been photographed ONLY.



#2 - Pallet NH3 Parts (PZ6281)

Pallet NH3 Parts (PZ6281), Pallet of New NH3 valves and gauges, placards. Notes: Item Location: Onida, SD 57564 Equipment Sold "AS IS, WHERE IS": All equipment/property is sold "AS IS, WHERE IS" with no warranty or guarantees, expressed or implied, No operational assessments or testing have been made by Del Peterson on this item, it has been photographed ONLY.



#3 - Air Respirator Mask (PZ6282)

Air Respirator Mask (PZ6282), 2 - New Advantage 4000 series APR air purifying respirator mask, 4-phosphine/ammonia/chlorine/P100. Notes: Item Location: Onida, SD 57564 Equipment Sold "AS IS, WHERE IS": All equipment/property is sold "AS IS, WHERE IS" with no warranty or guarantees, expressed or implied, No operational assessments or testing have been made by Del Peterson on this item, it has been photographed ONLY.



#4 - NH3 Hose (PZ6283)

NH3 Hose (PZ6283), New NH3 hose. Notes: Item Location: Onida, SD 57564 Equipment Sold "AS IS, WHERE IS": All equipment/property is sold "AS IS, WHERE IS" with no warranty or guarantees, expressed or implied, No operational assessments or testing have been made by Del Peterson on this item, it has been photographed ONLY.



#5 - NH3 Hose (PZ6284)

NH3 Hose (PZ6284) Notes: Item Location: Onida, SD 57564 Equipment Sold "AS IS, WHERE IS": All equipment/property is sold "AS IS, WHERE IS" with no warranty or guarantees, expressed or implied, No operational assessments or testing have been made by Del Peterson on this item, it has been photographed ONLY.



#6 - Pallet NH3 Parts (PZ6285)

Pallet NH3 Parts (PZ6285), NH3 tank gauges, NH3 safety relief valves, caps, 2-new valves. Notes: Item Location: Onida, SD 57564 Equipment Sold "AS IS, WHERE IS": All equipment/property is sold "AS IS, WHERE IS" with no warranty or guarantees, expressed or implied, No operational assessments or testing have been made by Del Peterson on this item, it has been photographed ONLY.



#7 - NH3 Parts (PZ6286)

NH3 Parts (PZ6286), NH3 parts, valves, safety shutoff. Notes: Item Location: Onida, SD 57564 Equipment Sold "AS IS, WHERE IS": All equipment/property is sold "AS IS, WHERE IS" with no warranty or guarantees, expressed or implied, No operational assessments or testing have been made by Del Peterson on this item, it has been photographed ONLY.



#8 - NH3 Hose (PZ6287)

NH3 Hose (PZ6287), New NH3 hose. Notes: Item Location: Onida, SD 57564 Equipment Sold "AS IS, WHERE IS": All equipment/property is sold "AS IS, WHERE IS" with no warranty or guarantees, expressed or implied, No operational assessments or testing have been made by Del Peterson on this item, it has been photographed ONLY.



#9 - Motors (PZ6288)

Motors (PZ6288), 3 - Baldor 1 hp motors, Mini batcher. Notes: Item Location: Onida, SD 57564 Equipment Sold "AS IS, WHERE IS": All equipment/property is sold "AS IS, WHERE IS" with no warranty or guarantees, expressed or implied, No operational assessments or testing have been made by Del Peterson on this item, it has been photographed ONLY.



#10 - NH3 Hose (PZ6289)

NH3 Hose (PZ6289), New NH3 hose. Notes: Item Location: Onida, SD 57564 Equipment Sold "AS IS, WHERE IS": All equipment/property is sold "AS IS, WHERE IS" with no warranty or guarantees, expressed or implied, No operational assessments or testing have been made by Del Peterson on this item, it has been photographed ONLY.



#11 - NH3 Hose (PZ6290)

NH3 Hose (PZ6290), New NH3 hose. Notes: Item Location: Onida, SD 57564 Equipment Sold "AS IS, WHERE IS": All equipment/property is sold "AS IS, WHERE IS" with no warranty or guarantees, expressed or implied, No operational assessments or testing have been made by Del Peterson on this item, it has been photographed ONLY.



#12 - NH3 Hose (PZ6291)

NH3 Hose (PZ6291), New NH3 hose. Notes: Item Location: Onida, SD 57564 Equipment Sold "AS IS, WHERE IS": All equipment/property is sold "AS IS, WHERE IS" with no warranty or guarantees, expressed or implied, No operational assessments or testing have been made by Del Peterson on this item, it has been photographed ONLY.



#13 - Parts (PZ6275)

Parts (PZ6275) John Deere pitstop brackets, couplers & hoses. Notes: Item Location: Onida, SD 57564 Equipment Sold "AS IS, WHERE IS": All equipment/property is sold "AS IS, WHERE IS" with no warranty or guarantees, expressed or implied, No operational assessments or testing have been made by Del Peterson on this item, it has been photographed ONLY.



#14 - Batco Belt Conveyor (PZ6293)

Batco Belt Conveyor (PZ6293), Batco model 1375S belt conveyor, Leeson 15 hp electric motor, portable. Notes: Item Location: Onida, SD 57564 Equipment Sold "AS IS, WHERE IS": All equipment/property is sold "AS IS, WHERE IS" with no warranty or guarantees, expressed or implied, No operational assessments or testing have been made by Del Peterson on this item, it has been photographed ONLY.



#15 - Duo Lift Part (PZ6276)

Duo Lift Part (PZ6276), New Duo Lift part. Notes: Item Location: Onida, SD 57564 Equipment Sold "AS IS, WHERE IS": All equipment/property is sold "AS IS, WHERE IS" with no warranty or guarantees, expressed or implied, No operational assessments or testing have been made by Del Peterson on this item, it has been photographed ONLY.



#16 - Pallet Spindels (PZ6279)

Pallet Spindels (PZ6279), Pallet of spindels. Notes: Item Location: Onida, SD 57564 Equipment Sold "AS IS, WHERE IS": All equipment/property is sold "AS IS, WHERE IS" with no warranty or guarantees, expressed or implied, No operational assessments or testing have been made by Del Peterson on this item, it has been photographed ONLY.



#17 - Tommy Lift (PZ6280)

Tommy Lift (PZ6280), Tommy lift platform, electric. Notes: Item Location: Onida, SD 57564 Equipment Sold "AS IS, WHERE IS": All equipment/property is sold "AS IS, WHERE IS" with no warranty or guarantees, expressed or implied, No operational assessments or testing have been made by Del Peterson on this item, it has been photographed ONLY.



#18 - Raven Super Cooler (PZ6262)

Raven Super Cooler (PZ6262), Raven double super cooler. Notes: Item Location: Onida, SD 57564 Equipment Sold "AS IS, WHERE IS": All equipment/property is sold "AS IS, WHERE IS" with no warranty or guarantees, expressed or implied, No operational assessments or testing have been made by Del Peterson on this item, it has been photographed ONLY.



#19 - NH3 Nurse Tank (PZ6272)

NH3 Nurse Tank (PZ6272), 2014 Trinity 2000 gallon NH3 nurse tank, front fill, data plate, national board# & S/N Q1404225, Duo Lift 5th wheel gear, 425/65R22.5 tires, Unit# 200. Notes: Item Location: Onida, SD 57564 Equipment Sold "AS IS, WHERE IS": All equipment/property is sold "AS IS, WHERE IS" with no warranty or guarantees, expressed or implied, No operational assessments or testing have been made by Del Peterson on this item, it has been photographed ONLY.



#20 - NH3 Nurse Tank (PZ6273)

NH3 Nurse Tank (PZ6273), 2014 Trinity 2000 gallon NH3 nurse tank, front fill, data plate, national board# & S/N Q1404224, Duo Lift 5th wheel gear, 425/65R22.5 tires, Unit# 201. Notes: Item Location: Onida, SD 57564 Equipment Sold "AS IS, WHERE IS": All equipment/property is sold "AS IS, WHERE IS" with no warranty or guarantees, expressed or implied, No operational assessments or testing have been made by Del Peterson on this item, it has been photographed ONLY.



#21 - NH3 Double Nurse Tanks (PZ6259)

NH3 Double Nurse Tanks (PZ6259), 1989 American Welding & Tank 1450 gallon NH3 tank, S/N 3Q01935, Unit# 11 and 1984 Trinity 1415 gallon NH3 tank, national board# 9403, S/N 317269, Unit# 3, Dalton 5th wheel gear, 12.5L-15SL front tires, 16.5L-16.1SL rear flotation tires. Notes: Item Location: Onida, SD 57564 Equipment Sold "AS IS, WHERE IS": All equipment/property is sold "AS IS, WHERE IS" with no warranty or guarantees, expressed or implied, No operational assessments or testing have been made by Del Peterson on this item, it has been photographed ONLY.



#22 - NH3 Double Nurse Tanks (PZ6261)

NH3 Double Nurse Tanks (PZ6261), Chemi - Trol 1450 gallon NH3 nurse tank, S/N 252361, Unit# 34 and 1980 Chemi - Trol 1450 gallon NH3 nurse tank, S/N 287509, Unit# 2, Dalton 5th wheel gear, 12.5L-15SL front tires, 16.5L-16.1SL rear flotation tires. Notes: Item Location: Onida, SD 57564 Equipment Sold "AS IS, WHERE IS": All equipment/property is sold "AS IS, WHERE IS" with no warranty or guarantees, expressed or implied, No operational assessments or testing have been made by Del Peterson on this item, it has been photographed ONLY.



#23 - NH3 Double Nurse Tanks (PZ6268)

NH3 Double Nurse Tanks (PZ6268), 1982 Chemi - Trol 1450 gallon NH3 nurse tank, S/N 300876, Unit# 55 and 1980 Chemi - Trol 1450 gallon NH3 nurse tank, S/N 287594, Unit# 56, Dalton model WNDT1500 5th wheel gear, 12.5L-15SL front tires, 16.5L-16.1SL rear flotation tires, S/N 143431. Notes: Item Location: Onida, SD 57564 Equipment Sold "AS IS, WHERE IS": All equipment/property is sold "AS IS, WHERE IS" with no warranty or guarantees, expressed or implied, No operational assessments or testing have been made by Del Peterson on this item, it has been photographed ONLY.



#24 - NH3 Double Nurse Tanks (PZ6269)

NH3 Double Nurse Tanks (PZ6269), 1980 Chemi - Trol 1450 gallon NH3 nurse tank, S/N 273445, Unit# 33 and 1980 Chemi - Trol 1450 gallon NH3 nurse tank, S/N 287543, Unit# 15, Dalton model WNDT1500 5th wheel gear, 12.5L-15SL front tires, 16.5L-16.1SL rear flotation tires, S/N 143430. Notes: Item Location: Onida, SD 57564 Equipment Sold "AS IS, WHERE IS": All equipment/property is sold "AS IS, WHERE IS" with no warranty or guarantees, expressed or implied, No operational assessments or testing have been made by Del Peterson on this item, it has been photographed ONLY.



#25 - 1979 Trinity NH3 Storage Tank (PZ6246)

1979 Trinity NH3 Storage Tank (PZ6246), 1979 Trinity 30,000 gallon NH3 storage tank, tank volume gauge, O.S. DIA. 109.346", Shell THK. .6733", Head THK. .387", National Board# 336. Notes: This item must be removed by October 1, 2017 with NO exceptions. Dismantle, removal and transportation is at the expense, risk and liability of the buyer. Item Location: Spring Creek, SD 57572 Equipment Sold "AS IS, WHERE IS": All equipment/property is sold "AS IS, WHERE IS" with no warranty or guarantees, expressed or implied, No operational assessments or testing have been made by Del Peterson on this item, it has been photographed ONLY.



#26 - NH3 Nurse Tank (PZ6258)

NH3 Nurse Tank (PZ6258), 1997 Chemi - Trol 1850 gallon NH3 nurse tank, top front fill, data plate, national board & S/N 806894, P & H 5th wheel gear, 16.5L-16.1 flotation tires, Unit# 184. Notes: Item Location: Onida, SD 57564 Equipment Sold "AS IS, WHERE IS": All equipment/property is sold "AS IS, WHERE IS" with no warranty or guarantees, expressed or implied, No operational assessments or testing have been made by Del Peterson on this item, it has been photographed ONLY.



#27 - NH3 Nurse Tank (PZ6263)

NH3 Nurse Tank (PZ6263), 1997 Chemi - Trol 1850 gallon NH3 nurse tank, top front fill, data plate, national board & S/N 806893, P&H model 2811-AWT 5th wheel gear, 16.5L-16.1 flotation tires, S/N 97-973, Unit# 187. Notes: Item Location: Onida, SD 57564 Equipment Sold "AS IS, WHERE IS": All equipment/property is sold "AS IS, WHERE IS" with no warranty or guarantees, expressed or implied, No operational assessments or testing have been made by Del Peterson on this item, it has been photographed ONLY.



#28 - NH3 Nurse Tank (PZ6264)

NH3 Nurse Tank (PZ6264), 1997 Chemi - Trol 1850 gallon NH3 nurse tank, top front fill, data plate, national board# & S/N 806892, P&H 2811-AWT 5th wheel gear, 16.5L-16.1 flotation tires, S/N 97-977, Unit# 185. Notes: Item Location: Onida, SD 57564 Equipment Sold "AS IS, WHERE IS": All equipment/property is sold "AS IS, WHERE IS" with no warranty or guarantees, expressed or implied, No operational assessments or testing have been made by Del Peterson on this item, it has been photographed ONLY.



#29 - NH3 Nurse Tank (PZ6265)

NH3 Nurse Tank (PZ6265), 1997 Chemi - Trol 1850 gallon NH3 nurse tank, top front fill, data plate, national board# & S/N 806896, P&H 2811-AWT 5th wheel gear, 16.5L-16.1 flotation tires, S/N 97-976, Unit# 183. Notes: Item Location: Onida, SD 57564 Equipment Sold "AS IS, WHERE IS": All equipment/property is sold "AS IS, WHERE IS" with no warranty or guarantees, expressed or implied, No operational assessments or testing have been made by Del Peterson on this item, it has been photographed ONLY.



#30 - NH3 Nurse Tank (PZ6266)

NH3 Nurse Tank (PZ6266), 1997 Chemi - Trol 1850 gallon NH3 nurse tank, top front fill, data plate, national board# & S/N 806890, P&H 5th wheel gear, 16.5L-16.1 flotation tires, Unit# 188. Notes: Item Location: Onida, SD 57564 Equipment Sold "AS IS, WHERE IS": All equipment/property is sold "AS IS, WHERE IS" with no warranty or guarantees, expressed or implied, No operational assessments or testing have been made by Del Peterson on this item, it has been photographed ONLY.



#31 - NH3 Nurse Tank (PZ6267)

NH3 Nurse Tank (PZ6267), 1997 Chemi - Trol 1850 gallon NH3 nurse tank, top front fill, data plate, national board# & S/N 806891, P&H 2811-AWT 5th wheel gear, 16.5L-16.1 flotation tires, S/N 97-975, Unit# 186. Notes: Item Location: Onida, SD 57564 Equipment Sold "AS IS, WHERE IS": All equipment/property is sold "AS IS, WHERE IS" with no warranty or guarantees, expressed or implied, No operational assessments or testing have been made by Del Peterson on this item, it has been photographed ONLY.



#32 - NH3 Nurse Tank (PZ6270)

NH3 Nurse Tank (PZ6270), 1997 Chemi - Trol 1850 gallon NH3 nurse tank, top front fill, data plate, national board# & S/N 806895, P&H 2811-AWT 5th wheel gear, 16.5L-16.1 flotation tires, S/N 97-972, Unit# 182. Notes: Item Location: Onida, SD 57564 Equipment Sold "AS IS, WHERE IS": All equipment/property is sold "AS IS, WHERE IS" with no warranty or guarantees, expressed or implied, No operational assessments or testing have been made by Del Peterson on this item, it has been photographed ONLY.



#33 - NH3 Nurse Tank (PZ6271)

NH3 Nurse Tank (PZ6271), 1997 Chemi - Trol 1850 gallon NH3 nurse tank, top front fill, data plate, national board# & S/N 806897, P&H 2811-AWT 5th wheel gear, 16.5L-16.1 flotation tires, S/N 97-974, Unit# 181. Notes: Item Location: Onida, SD 57564 Equipment Sold "AS IS, WHERE IS": All equipment/property is sold "AS IS, WHERE IS" with no warranty or guarantees, expressed or implied, No operational assessments or testing have been made by Del Peterson on this item, it has been photographed ONLY.



#34 - NH3 Nurse Tank (PZ6247)

NH3 Nurse Tank (PZ6247), Chemi - Trol 1450 gallon NH3 nurse tank, top front fill, data plate, national board & S/N 273433, 5th wheel gear, 14L-16.1 flotation tires, Unit# 32. Notes: Item Location: Onida, SD 57564 Equipment Sold "AS IS, WHERE IS": All equipment/property is sold "AS IS, WHERE IS" with no warranty or guarantees, expressed or implied, No operational assessments or testing have been made by Del Peterson on this item, it has been photographed ONLY.



#35 - NH3 Nurse Tank (PZ6250)

NH3 Nurse Tank (PZ6250), 1980 Chemi - Trol 1450 gallon NH3 nurse tank, top front fill, data plate, national board & S/N 287579, Ag Systems model AG86 5th wheel gear, 14L-16.1 flotation tires, S/N 4655, Unit# 10. Notes: Item Location: Onida, SD 57564 Equipment Sold "AS IS, WHERE IS": All equipment/property is sold "AS IS, WHERE IS" with no warranty or guarantees, expressed or implied, No operational assessments or testing have been made by Del Peterson on this item, it has been photographed ONLY.



#36 - NH3 Nurse Tank (PZ6252)

NH3 Nurse Tank (PZ6252), Chemi - Trol 1450 gallon NH3 nurse tank, top front fill, data plate, S/N 300875, Duo Lift 5th wheel gear, 14L-16.1 flotation tires, Unit# 12. Notes: Item Location: Onida, SD 57564 Equipment Sold "AS IS, WHERE IS": All equipment/property is sold "AS IS, WHERE IS" with no warranty or guarantees, expressed or implied, No operational assessments or testing have been made by Del Peterson on this item, it has been photographed ONLY.



#37 - NH3 Nurse Tank (PZ6253)

NH3 Nurse Tank (PZ6253), 1989 American Welding & Tank 1450 gallon NH3 nurse tank, top front fill, data plate, S/N 3Q02003, Duo Lift 5th wheel gear, 12.5L-15 flotation tires, Unit# 16. Notes: Item Location: Onida, SD 57564 Equipment Sold "AS IS, WHERE IS": All equipment/property is sold "AS IS, WHERE IS" with no warranty or guarantees, expressed or implied, No operational assessments or testing have been made by Del Peterson on this item, it has been photographed ONLY.



#38 - NH3 Nurse Tank (PZ6254)

NH3 Nurse Tank (PZ6254), 1989 American Welding & Tank 1450 gallon NH3 nurse tank, top front fill, data plate, S/N 3Q01939, Duo Lift 5th wheel gear, 12.5L-15 flotation tires, Unit# 14. Notes: Item Location: Onida, SD 57564 Equipment Sold "AS IS, WHERE IS": All equipment/property is sold "AS IS, WHERE IS" with no warranty or guarantees, expressed or implied, No operational assessments or testing have been made by Del Peterson on this item, it has been photographed ONLY.



#39 - NH3 Nurse Tank (PZ6255)

NH3 Nurse Tank (PZ6255), 1980 Chemi - Trol 1450 gallon NH3 nurse tank, top front fill, data plate, S/N 287542, 5th wheel gear, 14L-16.1 flotation tires, Unit# 10. Notes: Item Location: Onida, SD 57564 Equipment Sold "AS IS, WHERE IS": All equipment/property is sold "AS IS, WHERE IS" with no warranty or guarantees, expressed or implied, No operational assessments or testing have been made by Del Peterson on this item, it has been photographed ONLY.



#40 - NH3 Nurse Tank (PZ6257)

NH3 Nurse Tank (PZ6257), 1980 Chemi - Trol 1450 gallon NH3 nurse tank, top front fill, data plate, S/N 287506, Ag Systems model AG86 5th wheel gear, 14L-16.1 flotation tires, Unit# 11. Notes: Item Location: Onida, SD 57564 Equipment Sold "AS IS, WHERE IS": All equipment/property is sold "AS IS, WHERE IS" with no warranty or guarantees, expressed or implied, No operational assessments or testing have been made by Del Peterson on this item, it has been photographed ONLY.



#41 - NH3 Nurse Tank (PZ6248)

NH3 Nurse Tank (PZ6248), Trinity 1415 gallon NH3 nurse tank, top front fill, data plate, Ag Systems AG86 5th wheel gear, 14L-16.1 flotation tires, S/N 4656, Unit# 5. Notes: Item Location: Onida, SD 57564 Equipment Sold "AS IS, WHERE IS": All equipment/property is sold "AS IS, WHERE IS" with no warranty or guarantees, expressed or implied, No operational assessments or testing have been made by Del Peterson on this item, it has been photographed ONLY.



#42 - NH3 Nurse Tank (PZ6249)

NH3 Nurse Tank (PZ6249), 1984 Trinity 1415 gallon NH3 nurse tank, top front fill, data plate, national board# 6942, S/N 286283, P&H model 2806-AWT 5th wheel gear, 14L-16.1 flotation tires, S/N 84-83SB , Unit# 42. Notes: Item Location: Onida, SD 57564 Equipment Sold "AS IS, WHERE IS": All equipment/property is sold "AS IS, WHERE IS" with no warranty or guarantees, expressed or implied, No operational assessments or testing have been made by Del Peterson on this item, it has been photographed ONLY.



#43 - NH3 Nurse Tank (PZ6251)

NH3 Nurse Tank (PZ6251), 1984 Trinity 1415 gallon NH3 nurse tank, top front fill, data plate, S/N 318504, Ag Systems model AG86 5th wheel gear, 14L-16.1 flotation tires, S/N 4653, Unit# 17. Notes: Item Location: Onida, SD 57564 Equipment Sold "AS IS, WHERE IS": All equipment/property is sold "AS IS, WHERE IS" with no warranty or guarantees, expressed or implied, No operational assessments or testing have been made by Del Peterson on this item, it has been photographed ONLY.



#44 - NH3 Nurse Tank (PZ6256)

NH3 Nurse Tank (PZ6256), 1978 Trinity 1415 gallon NH3 nurse tank, top front fill, data plate, S/N 04440, Duo Lift 5th wheel gear, 12.5L-15 flotation tires, Unit# 40. Notes: Item Location: Onida, SD 57564 Equipment Sold "AS IS, WHERE IS": All equipment/property is sold "AS IS, WHERE IS" with no warranty or guarantees, expressed or implied, No operational assessments or testing have been made by Del Peterson on this item, it has been photographed ONLY.



#45 - NH3 Nurse Tank (PZ6260)

NH3 Nurse Tank (PZ6260), Trinity 1415 gallon NH3 nurse tank, top front fill, data plate, Duo Lift 5th wheel gear, 12.5L-15 flotation tires, Unit# 13. Notes: Item Location: Onida, SD 57564 Equipment Sold "AS IS, WHERE IS": All equipment/property is sold "AS IS, WHERE IS" with no warranty or guarantees, expressed or implied, No operational assessments or testing have been made by Del Peterson on this item, it has been photographed ONLY.



#46 - 1965 Trinity NH3 Storage Tank (PZ6274)

1965 Trinity NH3 Storage Tank (PZ6274), 1965 Trinity 12,000 gallon NH3 storage tank, tank volume gauge, S/N 5665, 7.5 hp electric motor, compressor, plumbing, fill station, metal steps & stand. Notes: This item must be removed by October 1, 2017 with NO exceptions. Dismantle, removal and transportation is at the expense, risk and liability of the buyer. Item Location: Onida, SD 57564 Equipment Sold "AS IS, WHERE IS": All equipment/property is sold "AS IS, WHERE IS" with no warranty or guarantees, expressed or implied, No operational assessments or testing have been made by Del Peterson on this item, it has been photographed ONLY.



#47 - Batco Undercar Conveyor (PZ6294)

Batco Undercar Conveyor (PZ6294), Batco model 1314 LP undercar conveyor, Leeson 5 hp electric motor, portable, 5.70-8 tires. Notes: Item Location: Onida, SD 57564 Equipment Sold "AS IS, WHERE IS": All equipment/property is sold "AS IS, WHERE IS" with no warranty or guarantees, expressed or implied, No operational assessments or testing have been made by Del Peterson on this item, it has been photographed ONLY.



#48 - John Deere 4020 Tractor (PZ6278)

John Deere 4020 Tractor (PZ6278), John Deere 4020 wide front tractor, diesel engine, manual transmission, PTO, John Deere 148 loader (S/N W00148X044247), 8' bucket, 12.5L-15 front tires, Good Year 18.4-34 rear tires, Unit# 556. Notes: Item Location: Onida, SD 57564 Equipment Sold "AS IS, WHERE IS": All equipment/property is sold "AS IS, WHERE IS" with no warranty or guarantees, expressed or implied, No operational assessments or testing have been made by Del Peterson on this item, it has been photographed ONLY.



#49 - 1985 Ford 8000 Truck (PZ6292)

1985 Ford 8000 Truck (PZ6292), 3208 Cat diesel engine, 13 speed transmission, heat, Am/Fm cassette radio, tandem axle, full screw, 385/65R22.5 front tires, 11R22.5 rear tires, Unit# 529. Notes: Item Location: Onida, SD 57564 Equipment Sold "AS IS, WHERE IS": All equipment/property is sold "AS IS, WHERE IS" with no warranty or guarantees, expressed or implied, No operational assessments or testing have been made by Del Peterson on this item, it has been photographed ONLY.



#50 - Tyler Dry Tender Box (PZ6241)

Tyler Dry Tender Box (PZ6241), Tyler 16 ton stainless steel dry tender box, rear discharge auger, all hydraulic, roll over tarp, side platforms. Notes: Item Location: Pierre, SD 57501 Equipment Sold "AS IS, WHERE IS": All equipment/property is sold "AS IS, WHERE IS" with no warranty or guarantees, expressed or implied, No operational assessments or testing have been made by Del Peterson on this item, it has been photographed ONLY.



#51 - Willmar Dry Tender Box (PZ6242)

Willmar Dry Tender Box (PZ6242), Willmar 16 ton stainless steel dry tender box, rear discharge auger, all hydraulic, roll over tarp, side platforms. Notes: Item Location: Pierre, SD 57501 Equipment Sold "AS IS, WHERE IS": All equipment/property is sold "AS IS, WHERE IS" with no warranty or guarantees, expressed or implied, No operational assessments or testing have been made by Del Peterson on this item, it has been photographed ONLY.



#52 - Liquid Nurse Tank (PZ6243)

Liquid Nurse Tank (PZ6243), 1995 Mid State 1600 gallon stainless steel liquid nurse tank, 1 - 85 gallon poly chemical eductor, 1 - 55 gallon poly chemical eductor, Duo Lift tandem axle gear, 295/75R22.5 tires, Unit# 157. Notes: Item Location: Pierre, SD 57501 Equipment Sold "AS IS, WHERE IS": All equipment/property is sold "AS IS, WHERE IS" with no warranty or guarantees, expressed or implied, No operational assessments or testing have been made by Del Peterson on this item, it has been photographed ONLY.



#53 - Farmall C Tractor (PZ6239)

Farmall C Tractor (PZ6239), gas engine, manual transmission, PTO, Sun Mastr mower (S/N CI72C-010-0372-1), 5.00-15 front tires, 11.2-36 rear tires, Unit# 128. Notes: Mower does not work. Item Location: Pierre, SD 57501 Equipment Sold "AS IS, WHERE IS": All equipment/property is sold "AS IS, WHERE IS" with no warranty or guarantees, expressed or implied, No operational assessments or testing have been made by Del Peterson on this item, it has been photographed ONLY.



#54 - 1979 Tyler Dry Tender Trailer (PZ6244)

T1979 Tyler Dry Tender Trailer (PZ6244), Tyler 18 ton stainless steel dry tender trailer, side discharge auger, roll over tarp, side fuel tank, Strick tandem axle trailer, 10;00-20 tires. Notes: Item Location: Pierre, SD 57501 Equipment Sold "AS IS, WHERE IS": All equipment/property is sold "AS IS, WHERE IS" with no warranty or guarantees, expressed or implied, No operational assessments or testing have been made by Del Peterson on this item, it has been photographed ONLY.



#55 - 1985 Ford 9000 Truck (PZ6238)

1985 Ford 9000 Truck (PZ6238), Cummins diesel engine, 9 speed transmission, air conditioning, heat, Am/Fm CD radio, tandem axle, full screw, 11R22.5 front tires, 295/75R22.5 rear tires, Unit# 433. Notes: Rear springs are bad. Item Location: Pierre, SD 57501 Equipment Sold "AS IS, WHERE IS": All equipment/property is sold "AS IS, WHERE IS" with no warranty or guarantees, expressed or implied, No operational assessments or testing have been made by Del Peterson on this item, it has been photographed ONLY.



#56 - 2003 Dodge Ram 2500 Pickup (PZ6240)

2003 Dodge Ram 2500 Pickup (PZ6240), 4x4, Cummins Turbo diesel engine, 5 speed transmission, air conditioning, heat, Am/Fm cassette radio, cruise control, running boards, 5th wheel ball, LT245/75R17 tires, shows 170,381 miles, Unit# 304. Notes: Engine is bad. Please call seller for more information. Item Location: Pierre, SD 57501 Equipment Sold "AS IS, WHERE IS": All equipment/property is sold "AS IS, WHERE IS" with no warranty or guarantees, expressed or implied, No operational assessments or testing have been made by Del Peterson on this item, it has been photographed ONLY.



#57 - 1996 Chevrolet 2500 Extended Cab Flatbed (PZ6245)

1996 Chevrolet 2500 Extended Cab Flatbed (PZ6245), 4x4, diesel engine, 5 speed transmission, air conditioning, heat, Am/Fm cassette radio, cruise control, Bradford Built steel flatbed, 5th wheel ball, LT265/75R16 tires, shows 224,458 miles, Unit# 440. Notes: Crack Windshield. Item Location: Pierre, SD 57501 Equipment Sold "AS IS, WHERE IS": All equipment/property is sold "AS IS, WHERE IS" with no warranty or guarantees, expressed or implied, No operational assessments or testing have been made by Del Peterson on this item, it has been photographed ONLY.



#58 - 2013 John Deere S680 Combine (6424)

2013 John Deere S680 Combine (6424), John Deere diesel engine, hydrostatic pro drive, premium cab, HID light package, cab heat/air conditioning, AM/FM CD radio, grain tank camera, multi-speed feederhouse, extended wear, 26' auger, powercast tailboard, cold start package, side hill performance package, wide space tube radiator, Goodyear 650/85R38 front duals, Goodyear 28LR26 rear tires, shows 1,316 engine hours, shows 919 separator hours. Notes: Item Location: Jackson, NE 68743 Equipment Sold "AS IS, WHERE IS": All equipment/property is sold "AS IS, WHERE IS" with no warranty or guarantees, expressed or implied, No operational assessments or testing have been made by Del Peterson on this item, it has been photographed ONLY.



#59 - 2012 Case IH 8230 Combine (DR6417)

2012 Case IH 8230 Combine (DR6417), diesel engine hydrostatic drive, 2 speed rear wheel assist, AFS Pro 700 monitor, Precision Planting clean grain elevator & sensors, electric hard top grain tank extensions, luxury cab w/leather seats, HID light package, cab heat/air conditioning, grain tank camera, 620/70R42 front tires & duals, shows 715 engine hours 498 separator hours. Notes: This combine has been through the dealer shop, DOES need oil change. The only reason Schrads are selling this equipment is they have changed their tillage practices, have moved to strip till and is the reason for little use and low hours. Purchased track combine. Item Location: Albert Lea, MN 56007 Equipment Sold "AS IS, WHERE IS": All equipment/property is sold "AS IS, WHERE IS" with no warranty or guarantees, expressed or implied, No operational assessments or testing have been made by Del Peterson on this item, it has been photographed ONLY.



#60 - Dry Spreader (DR6410)

Dry Spreader (DR6410), 8 ton dry buggy spreader, tandem axle, ground drive web chain, gas engine drive dual spinners, 16.5-16.1 flotation tires. Notes: Item Location: Albert Lea, MN 56007 Equipment Sold "AS IS, WHERE IS": All equipment/property is sold "AS IS, WHERE IS" with no warranty or guarantees, expressed or implied, No operational assessments or testing have been made by Del Peterson on this item, it has been photographed ONLY.



#61 - Layco Drag Conveyor (DR6419)

Layco Drag Conveyor (DR6419), 90 stainless steel 12" drag conveyor, 7 drops, stainless steel covers, electric drive motor. Notes: Item Location: Albert Lea, MN 56007 Equipment Sold "AS IS, WHERE IS": All equipment/property is sold "AS IS, WHERE IS" with no warranty or guarantees, expressed or implied, No operational assessments or testing have been made by Del Peterson on this item, it has been photographed ONLY.



#62 - Layco Receiving Leg (DR6420)

Layco Receiving Leg (DR6420), 25' stainless steel receiving leg, 22' dump height, 9.5" cups 10" apart, layco stainless steel drive over incline conveyor, electric motor. Notes: Item Location: Albert Lea, MN 56007 Equipment Sold "AS IS, WHERE IS": All equipment/property is sold "AS IS, WHERE IS" with no warranty or guarantees, expressed or implied, No operational assessments or testing have been made by Del Peterson on this item, it has been photographed ONLY.



#63 - John Deere Cultivator (DR6408)

John Deere Cultivator (DR6408), 12 row 30" 3 shovel sections, 3 point mount cultivator, hydraulic wings. Notes: Item Location: Albert Lea, MN 56007 Equipment Sold "AS IS, WHERE IS": All equipment/property is sold "AS IS, WHERE IS" with no warranty or guarantees, expressed or implied, No operational assessments or testing have been made by Del Peterson on this item, it has been photographed ONLY.



#64 - Pull Sprayer (DR6409)

Pull Sprayer (DR6409), 500 gallon poly liquid tank, 40' folding boom, single axle gear, PTO pump. Notes: Item Location: Albert Lea, MN 56007 Equipment Sold "AS IS, WHERE IS": All equipment/property is sold "AS IS, WHERE IS" with no warranty or guarantees, expressed or implied, No operational assessments or testing have been made by Del Peterson on this item, it has been photographed ONLY.



#65 - Bin Jacks (DR6407)

Bin Jacks (DR6407), (12 +1), bin jacks, NEW 1500# winches and cables in 2016, jacks lift double wide rings, 1-center jacks, +1 is an older one. Notes: Item Location: Albert Lea, MN 56007 Equipment Sold "AS IS, WHERE IS": All equipment/property is sold "AS IS, WHERE IS" with no warranty or guarantees, expressed or implied, No operational assessments or testing have been made by Del Peterson on this item, it has been photographed ONLY.



#66 - 2013 Case IH 3412 Head (DR6411)

2013 Case IH 3412 Head (DR6411), 12 row 30" corn head, lateral tilt & height control, tall corn kit, (2) quick release stalk stompers not in picture ARE included. Notes: The only reason Schrads are selling this equipment is they have changed their tillage practices, have moved to strip till and is the reason for little use and low hours. Item Location: Albert Lea, MN 56007 Equipment Sold "AS IS, WHERE IS": All equipment/property is sold "AS IS, WHERE IS" with no warranty or guarantees, expressed or implied, No operational assessments or testing have been made by Del Peterson on this item, it has been photographed ONLY.



#67 - 2013 Killbros Head Trailer (DR6412)

2013 Killbros Head Trailer (DR6412), model HC362 header trailer, tandem rear axle, 5th wheel front axle, 225/75R15 tires. Notes: This trailer has NO TITLE. Item Location: Albert Lea, MN 56007 Equipment Sold "AS IS, WHERE IS": All equipment/property is sold "AS IS, WHERE IS" with no warranty or guarantees, expressed or implied, No operational assessments or testing have been made by Del Peterson on this item, it has been photographed ONLY.



#68 - 2013 Case IH 3020 Platform (DR6414)

2013 Case IH 3020 Platform (DR6414), 35' flex header, 3" knives, field tracker header control, literally used on about 200 acres ONLY. Notes: The only reason Schrads are selling this equipment is they have changed their tillage practices, have moved to strip till and is the reason for little use and low hours. Item Location: Albert Lea, MN 56007 Equipment Sold "AS IS, WHERE IS": All equipment/property is sold "AS IS, WHERE IS" with no warranty or guarantees, expressed or implied, No operational assessments or testing have been made by Del Peterson on this item, it has been photographed ONLY.



#69 - Unverferth Cart (DR6421)

Unverferth Cart (DR6421), model HT30 head cart, 7.50-10 tires. Notes: This trailer has NO TITLE. Item Location: Albert Lea, MN 56007 Equipment Sold "AS IS, WHERE IS": All equipment/property is sold "AS IS, WHERE IS" with no warranty or guarantees, expressed or implied, No operational assessments or testing have been made by Del Peterson on this item, it has been photographed ONLY.



#70 - 2014 Case IH 330 Turbo, (DR6406)

2014 Case IH 330 Turbo, (DR6406), 34' True Tandem disc, flat bar rear rolling basket, walking tandem axles, hydraulic walking tandem gauge wheels, SN YED075415. Literally used ONLY 1 season bought NEW in 2015. Notes: The only reason Schrads are selling this equipment is they have changed their tillage practices, have moved to strip till and is the reason for little use and low hours. Item Location: Albert Lea, MN 56007 Equipment Sold "AS IS, WHERE IS": All equipment/property is sold "AS IS, WHERE IS" with no warranty or guarantees, expressed or implied, No operational assessments or testing have been made by Del Peterson on this item, it has been photographed ONLY.



#71 - 2014 Case IH 875 Disc Ripper (DR6413)

2014 Case IH 875 Disc Ripper (DR6413), 18' 9 shank, 7" replaceable knife points, 1 NEW set is included, 22.5" blades, flat bar rear basket. Notes: The only reason Schrads are selling this equipment is they have changed their tillage practices, have moved to strip till and is the reason for little use and low hours. Item Location: Albert Lea, MN 56007 Equipment Sold "AS IS, WHERE IS": All equipment/property is sold "AS IS, WHERE IS" with no warranty or guarantees, expressed or implied, No operational assessments or testing have been made by Del Peterson on this item, it has been photographed ONLY.



#72 - 2015 Case IH 200 Tiger Mate (DR6415)

2015 Case IH 200 Tiger Mate (DR6415), 60.5' double fold field cultivator, true 60' frame, dual folding cylinders, round bar rear baskets, 7" knock on sweeps, walking tandem axles and gauge wheels. Notes: The only reason Schrads are selling this equipment is they have changed their tillage practices, have moved to strip till and is the reason for little use and low hours. Item Location: Albert Lea, MN 56007 Equipment Sold "AS IS, WHERE IS": All equipment/property is sold "AS IS, WHERE IS" with no warranty or guarantees, expressed or implied, No operational assessments or testing have been made by Del Peterson on this item, it has been photographed ONLY.



#73 - 1982 Ravens End Dump (DR6416)

1982 Ravens End Dump (DR6416), 30' aluminum end dump trailer, rear grain gate, NEW roll tarp, air lift tag axle, 11R-22.5 tires Budd wheels. Notes: Item Location: Albert Lea, MN 56007 Equipment Sold "AS IS, WHERE IS": All equipment/property is sold "AS IS, WHERE IS" with no warranty or guarantees, expressed or implied, No operational assessments or testing have been made by Del Peterson on this item, it has been photographed ONLY.



#74 - 2001 International 4900 (DR6418)

2001 International 4900 (DR6418), DT 466 diesel engine, automatic transmission, Altec model AM857 8 door steel service box, 70 hydraulic boom, 700# capacity 2 man bucket, ground & bucket controls, auxiliary controls, 1500# winch, 4 outriggers, single axle, rear pintle hitch, AM/FM radio, air conditioning, air brakes, shows 66,936 miles. Notes: This truck was completely gone through by I-80 in 2013, sand blasted & painted, completely undercoated. The boom was inspected & rebuilt as well. This is a super clean ready to go bucket truck. Item Location: Albert Lea, MN 56007 Equipment Sold "AS IS, WHERE IS": All equipment/property is sold "AS IS, WHERE IS" with no warranty or guarantees, expressed or implied, No operational assessments or testing have been made by Del Peterson on this item, it has been photographed ONLY.



#75 - 1999 Terra Gator 8103 Dry Floater (PZ6434)

1999 Terra Gator 8103 Dry Floater (PZ6434), John Deere diesel engine, Terra Shift transmission, air conditioning, heat, Am/Fm CD stereo, Air Max 1000 dry air flow system (S/N A1-0107), 70' stainless steel boom, foam marker, stainless steel foam marker tank, electric roll over tarp, Firestone 66x43.00-25 front tires, Firestone 1050/50R25 rear tires, Raven monitor, Raven Switch Pro, shows 9415 hours, 89,875 miles. Notes: Glass is cracked. Item Location: Ridott, IL 61067 Equipment Sold "AS IS, WHERE IS": All equipment/property is sold "AS IS, WHERE IS" with no warranty or guarantees, expressed or implied, No operational assessments or testing have been made by Del Peterson on this item, it has been photographed ONLY.



#77 - 1977 IHC Paystar 5000 Dry Tender Truck (PZ6537)

1977 IHC Paystar 5000 Dry Tender Truck (PZ6537), PT-270 Cummins diesel engine, Fuller 7 speed transmission, heat, tandem axle, full screw, 16,000 lb front axle, 38,000 lb rear axle, Adams 15 ton 2 compartment stainless steel dry tender box, rear discharge auger, all hydraulic, roll over tarp. Notes: Item Location: Lafayette, LA 70502 Equipment Sold "AS IS, WHERE IS": All equipment/property is sold "AS IS, WHERE IS" with no warranty or guarantees, expressed or implied, No operational assessments or testing have been made by Del Peterson on this item, it has been photographed ONLY.



#78 - 1991 John Deere Combine 9500 Combine (JK166)

1991 John Deere Combine 9500 Combine (JK166), Field ready, less than 250 hours on injection pump, chains and belts, 18.438 duals, 2 speed heavy duty 4 wheel drive. Notes: Item Location: Ottumwa, IA 52501 Equipment Sold "AS IS, WHERE IS": All equipment/property is sold "AS IS, WHERE IS" with no warranty or guarantees, expressed or implied, No operational assessments or testing have been made by Del Peterson on this item, it has been photographed ONLY.



#79 - Case IH 1660 Combine (JK165)

Case IH 1660 Combine (JK165), Cummins engine, Field ready, Less than 500 hours on sieves, bushings, chains and belts, specialty rotor, no chopper, blows cold A/C, 30.5.3 tires, shows 3090 hours. Notes: Item Location: Ottumwa, IA 52501 Equipment Sold "AS IS, WHERE IS": All equipment/property is sold "AS IS, WHERE IS" with no warranty or guarantees, expressed or implied, No operational assessments or testing have been made by Del Peterson on this item, it has been photographed ONLY.



#80 - 1063 Corn Head (JK178)

1063 Corn Head (JK178), Less than 500 acres on complete rebuild, field ready. Notes: Item Location: Ottumwa, IA 52501 Equipment Sold "AS IS, WHERE IS": All equipment/property is sold "AS IS, WHERE IS" with no warranty or guarantees, expressed or implied, No operational assessments or testing have been made by Del Peterson on this item, it has been photographed ONLY.



#81 - Grain Hopper Tank Superstructure (JK164)

Grain Hopper Tank Superstructure (JK164), Vertical drive-thru clearance =13' 8", overall height of structure = 14' 8", Horizontal drive-thru clearance =10' 4", overall width of structure = 11' 10", composition: legs are constructed of 8" x 8" x 1/2" heavy I-beam, top plate is constructed of 61/2" x 12" x 1/2" heavy I-beam. Notes: This structure is extremely well-built and heavy-duty. Ready as - is to mount a 12' diameter hopper tank. Structure will need to be removed by buyer prior to August 31st. Item Location: Lanark, IL 61046 Equipment Sold "AS IS, WHERE IS": All equipment/property is sold "AS IS, WHERE IS" with no warranty or guarantees, expressed or implied, No operational assessments or testing have been made by Del Peterson on this item, it has been photographed ONLY.



#82 - Powermate Trash Pump Model PP0100342 (AL167)

Powermate Trash Pump Model PP0100342 (AL167), 2" connection, 11095 GPH, total head 98', suction head 26', 4 stroke/ 5 hp motor. Notes: Pump has never even had gas or oil put in it. Item Location: Fremont, NE 68025 Equipment Sold "AS IS, WHERE IS": All equipment/property is sold "AS IS, WHERE IS" with no warranty or guarantees, expressed or implied, No operational assessments or testing have been made by Del Peterson on this item, it has been photographed ONLY.



#83 - 2013 H&H V Nose XL Series Enclosed Trailer (PD407)

2013 H&H V Nose XL Series Enclosed Trailer (PD407), 7 foot X 18 foot, 5200 lb, rubber torsion tandem axles, chrome modular wheels, new spare tire, 40 inch front rock guard, 48 inch RV style RH door, 50/50 rear doors, rear rubber dock bumper, LED light package, air vent, two interior lights, heavy duty drop leg jack, 2 5/16 inch ball coupler, wood floor, wood lined interior sides, all floor cross members and sides stakes were special ordered on 12 inch centers, tongue and entire undercarriage are fully undercoated, one owner for service trailer, 78 Inches Tall. Notes: One owner used for service trailer. See build sheet for all upgrades above standard XL Series. Item Location: Afton, IA 50830 Equipment Sold "AS IS, WHERE IS": All equipment/property is sold "AS IS, WHERE IS" with no warranty or guarantees, expressed or implied, No operational assessments or testing have been made by Del Peterson on this item, it has been photographed ONLY.



#84 - Scott Flatbed W/ Scott LL800 Hoist (PD408)

Scott Flatbed W/ Scott LL800 Hoist (PD408), 8 foot X 16 foot, smooth steel floor, hoist mounted to bed a reservoir tank with tank mounted pump and control valve, wood headache rack but no sides, factory hinge assembly at the rear, hoist works as shown in pictures with no leaks on cylinder, bed repainted when removed from truck, cross members in good condition, lights are there but will need some wiring work. Notes: Item Location: Afton, IA 50830 Equipment Sold "AS IS, WHERE IS": All equipment/property is sold "AS IS, WHERE IS" with no warranty or guarantees, expressed or implied, No operational assessments or testing have been made by Del Peterson on this item, it has been photographed ONLY.



#85 - 1988 ST&E Stainless Steel Tank Trailer (CG280)

1988 ST&E Stainless Steel Tank Trailer (CG280), 5000 gallon, 43 ft long, no pump, no leaks, in very good shape, 3 inch center valve, 1 compartment with baffles. Notes: Under current DOT inspection. Item Location: London Mills, IL 61544 Equipment Sold "AS IS, WHERE IS": All equipment/property is sold "AS IS, WHERE IS" with no warranty or guarantees, expressed or implied, No operational assessments or testing have been made by Del Peterson on this item, it has been photographed ONLY.



#86 - 1979 Dorsey Dump Trailer (CG281)

1979 Dorsey Dump Trailer (CG281), 28 ft framed dump trailer, 60 inch inside height, tarp liner, 11r-22.5 tires. Notes: Under current DOT inspection. Item Location: London Mills, IL 61544 Equipment Sold "AS IS, WHERE IS": All equipment/property is sold "AS IS, WHERE IS" with no warranty or guarantees, expressed or implied, No operational assessments or testing have been made by Del Peterson on this item, it has been photographed ONLY.



#87 - 2011 Hagie STS-14 Sprayer (TR3511)

2011 Hagie STS-14 Sprayer (TR3511), diesel engine, hydrostat transmission, AM/FM, Heat/AC, 380/90R54 tires, X Drive, Stainless tank serial # as BNU1631111007 and it has 1811 hours. Notes: Sprayer was wrecked and totaled out. Damage seen in photos. Item Location: Osgood, IN 47037 Equipment Sold "AS IS, WHERE IS": All equipment/property is sold "AS IS, WHERE IS" with no warranty or guarantees, expressed or implied, No operational assessments or testing have been made by Del Peterson on this item, it has been photographed ONLY.



#88 - 2012 Chevrolet Malibu Sedan (TR3512)

2012 Chevrolet Malibu Sedan (TR3512), gas engine, automatic transmission, AM/FM CD player, Heat, AC, 4 door, leather heated seats, power windows/locks/seats, cruise control, sun roof, approx 58,700 miles. Notes: Excellent condition, very clean. Item Location: Lincoln, NE 68505 Equipment Sold "AS IS, WHERE IS": All equipment/property is sold "AS IS, WHERE IS" with no warranty or guarantees, expressed or implied, No operational assessments or testing have been made by Del Peterson on this item, it has been photographed ONLY.



#89 - 2004 John Deere 4920 Sprayer (PZ6568)

2004 John Deere 4920 Sprayer (PZ6568), John Deere diesel engine, hydrostatic transmission, air conditioning, heat, Am/Fm radio, New Leader model L3030 G4-11 stainless steel dry spreader box (S/N 130345), all hydraulic, Firestone 380/105R50 tires, StarFire iTC globe, Brown Box, John Deere monitor, approx. 6247 hours, Unit# 1073. Notes: Item Location: Hazleton, IA 50641 Equipment Sold "AS IS, WHERE IS": All equipment/property is sold "AS IS, WHERE IS" with no warranty or guarantees, expressed or implied, No operational assessments or testing have been made by Del Peterson on this item, it has been photographed ONLY.



#90 - NH3 Tool Bar (PZ6553)

NH3 Tool Bar (PZ6553), Blu Jet 13 knife pull type NH3 tool bar, coulters, cooler, hydraulic wings, walking tandems, flotation tires, rear hitch, Unit# 6675A. Notes: Item Location: Hazleton, IA 50641 Equipment Sold "AS IS, WHERE IS": All equipment/property is sold "AS IS, WHERE IS" with no warranty or guarantees, expressed or implied, No operational assessments or testing have been made by Del Peterson on this item, it has been photographed ONLY.



#91 - NH3 Tool Bar (PZ6554)

NH3 Tool Bar (PZ6554), Blu Jet 17 knife pull type NH3 tool bar, coulters, Raven double cooler, hydraulic wings, walking tandems, flotation tires, rear hitch, Unit# 6676A. Notes: Item Location: Hazleton, IA 50641 Equipment Sold "AS IS, WHERE IS": All equipment/property is sold "AS IS, WHERE IS" with no warranty or guarantees, expressed or implied, No operational assessments or testing have been made by Del Peterson on this item, it has been photographed ONLY.



#92 - Liquid Nurse Tank (PZ6555)

Liquid Nurse Tank (PZ6555), 1000 gallon poly liquid nurse tank, motor/pump, 4 wheel running gear, auto steer, 11L-15 flotation tires, Unit# 789. Notes: Contact seller about operation of motor/pump. Item Location: Hazleton, IA 50641 Equipment Sold "AS IS, WHERE IS": All equipment/property is sold "AS IS, WHERE IS" with no warranty or guarantees, expressed or implied, No operational assessments or testing have been made by Del Peterson on this item, it has been photographed ONLY.



#93 - Liquid Nurse Tank (PZ6556)

Liquid Nurse Tank (PZ6556), 1000 gallon poly liquid nurse tank, motor/pump, 4 wheel running gear, auto steer, 11L-15 flotation tires. Notes: Contact seller about operation of motor/pump. Item Location: Hazleton, IA 50641 Equipment Sold "AS IS, WHERE IS": All equipment/property is sold "AS IS, WHERE IS" with no warranty or guarantees, expressed or implied, No operational assessments or testing have been made by Del Peterson on this item, it has been photographed ONLY.



#94 - Liquid Nurse Tank (PZ6557)

Liquid Nurse Tank (PZ6557), 1000 gallon poly liquid nurse tank, motor/pump, 4 wheel running gear, auto steer, 11L-15 flotation tires, Unit# 880. Notes: Contact seller about operation of motor/pump. Item Location: Hazleton, IA 50641 Equipment Sold "AS IS, WHERE IS": All equipment/property is sold "AS IS, WHERE IS" with no warranty or guarantees, expressed or implied, No operational assessments or testing have been made by Del Peterson on this item, it has been photographed ONLY.



#95 - Liquid Nurse Tank (PZ6558)

Liquid Nurse Tank (PZ6558), 1000 gallon poly liquid nurse tank, motor/pump, 4 wheel running gear, auto steer, 11L-15 flotation tires, Unit# 582. Notes: Contact seller about operation of motor/pump. Item Location: Hazleton, IA 50641 Equipment Sold "AS IS, WHERE IS": All equipment/property is sold "AS IS, WHERE IS" with no warranty or guarantees, expressed or implied, No operational assessments or testing have been made by Del Peterson on this item, it has been photographed ONLY.



#96 - Liquid Nurse Tank (PZ6559)

Liquid Nurse Tank (PZ6559), 1000 gallon poly liquid nurse tank, motor/pump, 4 wheel running gear, auto steer, 11L-15 flotation tires, Unit# 588. Notes: Contact seller about operation of motor/pump. Item Location: Hazleton, IA 50641 Equipment Sold "AS IS, WHERE IS": All equipment/property is sold "AS IS, WHERE IS" with no warranty or guarantees, expressed or implied, No operational assessments or testing have been made by Del Peterson on this item, it has been photographed ONLY.



#97 - Liquid Nurse Tank (PZ6560)

Liquid Nurse Tank (PZ6560), 1000 gallon fiberglass liquid nurse tank, motor/pump, tandem axle gear, 11L-15 flotation tires, Unit# 870. Notes: Contact seller about operation of motor/pump. Item Location: Hazleton, IA 50641 Equipment Sold "AS IS, WHERE IS": All equipment/property is sold "AS IS, WHERE IS" with no warranty or guarantees, expressed or implied, No operational assessments or testing have been made by Del Peterson on this item, it has been photographed ONLY.



#98 - Liquid Nurse Tank (PZ6561)

Liquid Nurse Tank (PZ6561), 300 gallon poly liquid nurse tank, tandem axle gear, flotation tires, Unit# 779. Notes: Item Location: Hazleton, IA 50641 Equipment Sold "AS IS, WHERE IS": All equipment/property is sold "AS IS, WHERE IS" with no warranty or guarantees, expressed or implied, No operational assessments or testing have been made by Del Peterson on this item, it has been photographed ONLY.



#99 - Liquid Nurse Tank (PZ6562)

Liquid Nurse Tank (PZ6562), 1000 gallon poly liquid nurse tank, motor/pump, 4 wheel running gear, auto steer, 9.5L-15 flotation tires, Unit# 885. Notes: Contact seller about operation of motor/pump. Item Location: Hazleton, IA 50641 Equipment Sold "AS IS, WHERE IS": All equipment/property is sold "AS IS, WHERE IS" with no warranty or guarantees, expressed or implied, No operational assessments or testing have been made by Del Peterson on this item, it has been photographed ONLY.



#100 - Liquid Nurse Tank (PZ6563)

Liquid Nurse Tank (PZ6563), 750 gallon poly liquid nurse tank, motor/pump, tandem axle gear, P235/75R15 tires, Unit# 883. Notes: Contact seller about operation of motor/pump. Item Location: Hazleton, IA 50641 Equipment Sold "AS IS, WHERE IS": All equipment/property is sold "AS IS, WHERE IS" with no warranty or guarantees, expressed or implied, No operational assessments or testing have been made by Del Peterson on this item, it has been photographed ONLY.



#101 - Liquid Nurse Tank (PZ6564)

Liquid Nurse Tank (PZ6564), 750 gallon poly liquid nurse tank, motor/pump, tandem axle gear, flotation tires, Unit# 884. Notes: Contact seller about operation of motor/pump. Item Location: Hazleton, IA 50641 Equipment Sold "AS IS, WHERE IS": All equipment/property is sold "AS IS, WHERE IS" with no warranty or guarantees, expressed or implied, No operational assessments or testing have been made by Del Peterson on this item, it has been photographed ONLY.



#102 - Liquid Nurse Tank (PZ6565)

Liquid Nurse Tank (PZ6565), 750 gallon poly liquid nurse tank, motor/pump, tandem axle gear, 9.50-15 flotation tires. Notes: Contact seller about operation of motor/pump. Item Location: Hazleton, IA 50641 Equipment Sold "AS IS, WHERE IS": All equipment/property is sold "AS IS, WHERE IS" with no warranty or guarantees, expressed or implied, No operational assessments or testing have been made by Del Peterson on this item, it has been photographed ONLY.



#103 - Liquid Nurse Tank (PZ6566)

Liquid Nurse Tank (PZ6566), 1000 gallon stainless steel liquid nurse tank, motor/pump, tandem axle gear, 11L-15 flotation tires. Notes: Contact seller about operation of motor/pump. Item Location: Hazleton, IA 50641 Equipment Sold "AS IS, WHERE IS": All equipment/property is sold "AS IS, WHERE IS" with no warranty or guarantees, expressed or implied, No operational assessments or testing have been made by Del Peterson on this item, it has been photographed ONLY.



#104 - 1985 Ford 8000 Flatbed Truck (PZ6567)

1985 Ford 8000 Flatbed Truck (PZ6567), 3208 Cat diesel engine, 10 speed transmission, heat, Am/Fm radio, single axle, 22' steel flatbed, headache rack, 11R22.5 tires, Unit# 204. Notes: Item Location: Hazleton, IA 50641 Equipment Sold "AS IS, WHERE IS": All equipment/property is sold "AS IS, WHERE IS" with no warranty or guarantees, expressed or implied, No operational assessments or testing have been made by Del Peterson on this item, it has been photographed ONLY.



#105 - Ditch Witch 1020H Trencher (PZ6570)

Ditch Witch 1020H Trencher (PZ6570), Honda GX340 11 hp gas engine, forward/reverse, Unit# 4199. Notes: Item Location: Hazleton, IA 50641 Equipment Sold "AS IS, WHERE IS": All equipment/property is sold "AS IS, WHERE IS" with no warranty or guarantees, expressed or implied, No operational assessments or testing have been made by Del Peterson on this item, it has been photographed ONLY.



#106 - Ditch Witch 1010 Trencher (PZ6571)

Ditch Witch 1010 Trencher (PZ6571), Briggs & Stratton 10 hp gas engine, forward/reverse, Unit# 3542. Notes: Please contact seller for working condition. Item Location: Hazleton, IA 50641 Equipment Sold "AS IS, WHERE IS": All equipment/property is sold "AS IS, WHERE IS" with no warranty or guarantees, expressed or implied, No operational assessments or testing have been made by Del Peterson on this item, it has been photographed ONLY.



#107 - NH3 Tool Bar (PZ6545)

NH3 Tool Bar (PZ6545), Blu Jet 11 knife pull type NH3 tool bar, coulters, GDI 200 ground driven pump, hydraulic wings, flotation tires, rear hitch, Unit# 3. Notes: Pump is missing. Item Location: Lone Tree, IA 52755 Equipment Sold "AS IS, WHERE IS": All equipment/property is sold "AS IS, WHERE IS" with no warranty or guarantees, expressed or implied, No operational assessments or testing have been made by Del Peterson on this item, it has been photographed ONLY.



#108 - Dry Spreader (PZ6441)

Dry Spreader (PZ6441), 6 ton dry spreader, PTO, 21.5L-16.1 flotation tires, Unit# 5191. Notes: Rear fans missing. Item Location: Lone Tree, IA 52755 Equipment Sold "AS IS, WHERE IS": All equipment/property is sold "AS IS, WHERE IS" with no warranty or guarantees, expressed or implied, No operational assessments or testing have been made by Del Peterson on this item, it has been photographed ONLY.



#109 - Dry Spreader (PZ6442)

Dry Spreader (PZ6442), Tyler 4 ton stainless steel dry spreader, PTO, 12.5L-15 flotation tires, Unit# I-1045. Notes: Item Location: Lone Tree, IA 52755 Equipment Sold "AS IS, WHERE IS": All equipment/property is sold "AS IS, WHERE IS" with no warranty or guarantees, expressed or implied, No operational assessments or testing have been made by Del Peterson on this item, it has been photographed ONLY.



#110 - Liquid Nurse Tank (PZ6443)

Liquid Nurse Tank (PZ6443), 1000 gallon poly liquid nurse tank, Duo Lift tandem axle gear, 12.5L-15 flotation tires, Unit# 5118. Notes: Item Location: Lone Tree, IA 52755 Equipment Sold "AS IS, WHERE IS": All equipment/property is sold "AS IS, WHERE IS" with no warranty or guarantees, expressed or implied, No operational assessments or testing have been made by Del Peterson on this item, it has been photographed ONLY.



#111 - Liquid Nurse Tank (PZ6444)

Liquid Nurse Tank (PZ6444), 1000 gallon poly liquid nurse tank, Duo Lift tandem axle gear, 12.5L-15 flotation tires, Unit# 5117. Notes: Item Location: Lone Tree, IA 52755 Equipment Sold "AS IS, WHERE IS": All equipment/property is sold "AS IS, WHERE IS" with no warranty or guarantees, expressed or implied, No operational assessments or testing have been made by Del Peterson on this item, it has been photographed ONLY.



#112 - Liquid Applicator (PZ6540)

Liquid Applicator (PZ6540), 500 gallon poly sphere liquid applicator, 8 coulter injection, John Blue ground driven pump, flotation tires. Notes: Item Location: Lone Tree, IA 52755 Equipment Sold "AS IS, WHERE IS": All equipment/property is sold "AS IS, WHERE IS" with no warranty or guarantees, expressed or implied, No operational assessments or testing have been made by Del Peterson on this item, it has been photographed ONLY.



#113 - Running Gear (PZ6445)

Running Gear (PZ6445), 4 wheel running gear, 5th wheel, 12.5L-15 flotation tires. Notes: Item Location: Lone Tree, IA 52755 Equipment Sold "AS IS, WHERE IS": All equipment/property is sold "AS IS, WHERE IS" with no warranty or guarantees, expressed or implied, No operational assessments or testing have been made by Del Peterson on this item, it has been photographed ONLY.



#114 - Running Gear (PZ6446)

Running Gear (PZ6446), 4 wheel running gear, 5th wheel, 11L-15 flotation tires. Notes: Item Location: Lone Tree, IA 52755 Equipment Sold "AS IS, WHERE IS": All equipment/property is sold "AS IS, WHERE IS" with no warranty or guarantees, expressed or implied, No operational assessments or testing have been made by Del Peterson on this item, it has been photographed ONLY.



#115 - Running Gear (PZ6447)

Running Gear (PZ6447), 4 wheel running gear, 5th wheel, 12.5L-15 flotation tires. Notes: Item Location: Lone Tree, IA 52755 Equipment Sold "AS IS, WHERE IS": All equipment/property is sold "AS IS, WHERE IS" with no warranty or guarantees, expressed or implied, No operational assessments or testing have been made by Del Peterson on this item, it has been photographed ONLY.



#116 - Running Gear (PZ6538)

Running Gear (PZ6538), 4 wheel running gear, 5th wheel, 12.5L-15 flotation tires. Notes: Item Location: Lone Tree, IA 52755 Equipment Sold "AS IS, WHERE IS": All equipment/property is sold "AS IS, WHERE IS" with no warranty or guarantees, expressed or implied, No operational assessments or testing have been made by Del Peterson on this item, it has been photographed ONLY.



#117 - Seed Tender (PZ6539)

Seed Tender (PZ6539), Seed tender, side discharge auger, 4 wheel running gear, auto steer gear, 11L-15 flotation tires. Notes: Item Location: Lone Tree, IA 52755 Equipment Sold "AS IS, WHERE IS": All equipment/property is sold "AS IS, WHERE IS" with no warranty or guarantees, expressed or implied, No operational assessments or testing have been made by Del Peterson on this item, it has been photographed ONLY.



#118 - Seed Tender (PZ6541)

Seed Tender (PZ6541), Seed tender, side discharge auger, 4 wheel running gear, auto steer gear, 11L-15 flotation tires. Notes: Item Location: Lone Tree, IA 52755 Equipment Sold "AS IS, WHERE IS": All equipment/property is sold "AS IS, WHERE IS" with no warranty or guarantees, expressed or implied, No operational assessments or testing have been made by Del Peterson on this item, it has been photographed ONLY.



#119 - Flotation Tires (PZ6542)

Flotation Tires (PZ6542), 2 - 16.5-16.1 flotation tires, rims. Notes: Item Location: Lone Tree, IA 52755 Equipment Sold "AS IS, WHERE IS": All equipment/property is sold "AS IS, WHERE IS" with no warranty or guarantees, expressed or implied, No operational assessments or testing have been made by Del Peterson on this item, it has been photographed ONLY.



#120 - Flotation Tires (PZ6543)

Flotation Tires (PZ6543), 5 - 21.5-16.1 flotation tires, rims. Notes: Item Location: Lone Tree, IA 52755 Equipment Sold "AS IS, WHERE IS": All equipment/property is sold "AS IS, WHERE IS" with no warranty or guarantees, expressed or implied, No operational assessments or testing have been made by Del Peterson on this item, it has been photographed ONLY.



#121 - Flotation Tires (PZ6544)

Flotation Tires (PZ6544), 6 - 11L-15 & 12.5L-15 flotation tires, rims. Notes: Item Location: Lone Tree, IA 52755 Equipment Sold "AS IS, WHERE IS": All equipment/property is sold "AS IS, WHERE IS" with no warranty or guarantees, expressed or implied, No operational assessments or testing have been made by Del Peterson on this item, it has been photographed ONLY.



#122 - 2009 Chevrolet 1500 Extended Cab Pickup (PZ6548)

2009 Chevrolet 1500 Extended Cab Pickup (PZ6548), 4x4, gas engine, automatic transmission, air conditioning, heat, Am/Fm radio, cruise control, power windows & locks, 265/70R17 tires, shows 191,833 miles, Unit# 377. Notes: Weak engine. Item Location: Lone Tree, IA 52755 Equipment Sold "AS IS, WHERE IS": All equipment/property is sold "AS IS, WHERE IS" with no warranty or guarantees, expressed or implied, No operational assessments or testing have been made by Del Peterson on this item, it has been photographed ONLY.



#123 - Miller Welder (PZ6546)

Miller Welder (PZ6546), Miller Model M-295 welder, wheels. Notes: Please call seller about working condition of welder. Item Location: Lone Tree, IA 52755 Equipment Sold "AS IS, WHERE IS": All equipment/property is sold "AS IS, WHERE IS" with no warranty or guarantees, expressed or implied, No operational assessments or testing have been made by Del Peterson on this item, it has been photographed ONLY.



#124 - Air Compressor (PZ6547)

Air Compressor (PZ6547), Air compressor, model 325 compressor, Baldor 10 hp electric motor. Notes: Item Location: Lone Tree, IA 52755 Equipment Sold "AS IS, WHERE IS": All equipment/property is sold "AS IS, WHERE IS" with no warranty or guarantees, expressed or implied, No operational assessments or testing have been made by Del Peterson on this item, it has been photographed ONLY.



#125 - NH3 Nurse Tank (PZ6549)

NH3 Nurse Tank (PZ6549), 1000 gallon NH3 nurse tank, center fill, auto steer gear, flotation tires, Unit# 6529. Notes: Item Location: Lowden, IA 52255 Equipment Sold "AS IS, WHERE IS": All equipment/property is sold "AS IS, WHERE IS" with no warranty or guarantees, expressed or implied, No operational assessments or testing have been made by Del Peterson on this item, it has been photographed ONLY.



#126 - Willmar Dry Spreader (PZ6550)

Willmar Dry Spreader (PZ6550), Willmar 600 dry spreader, PTO, 16.5L-16.1 flotation tires, Unit# CA-34. Notes: Item Location: Lowden, IA 52255 Equipment Sold "AS IS, WHERE IS": All equipment/property is sold "AS IS, WHERE IS" with no warranty or guarantees, expressed or implied, No operational assessments or testing have been made by Del Peterson on this item, it has been photographed ONLY.



#127 - Steel Chemical Dike (PZ6551)

Steel Chemical Dike (PZ6551), 12' x 8' steel containment chemical dike, floor. Notes: Item Location: Lowden, IA 52255 Equipment Sold "AS IS, WHERE IS": All equipment/property is sold "AS IS, WHERE IS" with no warranty or guarantees, expressed or implied, No operational assessments or testing have been made by Del Peterson on this item, it has been photographed ONLY.



#128 - 1998 Polaris ATV (PZ6579)

1998 Polaris ATV (PZ6579), Polaris 4x4 Magnum 425, gas engine, automatic transmission, AT25x8R12 front tires, AT25x11-10 rear tires, Unit# 143. Notes: Non Runner. NO TITLE. Item Location: New Hampton, IA 50659 Equipment Sold "AS IS, WHERE IS": All equipment/property is sold "AS IS, WHERE IS" with no warranty or guarantees, expressed or implied, No operational assessments or testing have been made by Del Peterson on this item, it has been photographed ONLY.



#129 - Kawasaki Bayou 200 ATV (PZ6581)

Kawasaki Bayou 200 ATV (PZ6581), gas engine, manual transmission, AT21x8-9 front tires, AT22x10-10 rear tires, Unit# 5000. Notes: Non Runner. NO TITLE. Item Location: New Hampton, IA 50659 Equipment Sold "AS IS, WHERE IS": All equipment/property is sold "AS IS, WHERE IS" with no warranty or guarantees, expressed or implied, No operational assessments or testing have been made by Del Peterson on this item, it has been photographed ONLY.



#130 - 2004 B & B Dry Tender Trailer (PZ6578)

2004 B & B Dry Tender Trailer (PZ6578), 2004 B & B dry tender trailer, tandem axle, cheater axle, Willmar 24 ton dry tender box (S/N 24SSJN113), side discharge auger, hydraulic, roll over tarp, 255/70R22.5 tires, 235/75R17.5 cheater tires, Unit# 3525. Notes: Item Location: New Hampton, IA 50659 Equipment Sold "AS IS, WHERE IS": All equipment/property is sold "AS IS, WHERE IS" with no warranty or guarantees, expressed or implied, No operational assessments or testing have been made by Del Peterson on this item, it has been photographed ONLY.



#131 - 1993 Freightliner FLD112 Truck (PZ6577)

1993 Freightliner FLD112 Truck (PZ6577), Cummins L10 diesel engine, 9 speed transmission, air conditioning, heat, Am/Fm cassette radio, tandem axle, full screw, air ride suspension, 5th wheel, 4 line wet kit, 275/80R22.5 front tires, 295/75R22.5 rear tires. Notes: Needs batteries, current ones are bad. Item Location: New Hampton, IA 50659 Equipment Sold "AS IS, WHERE IS": All equipment/property is sold "AS IS, WHERE IS" with no warranty or guarantees, expressed or implied, No operational assessments or testing have been made by Del Peterson on this item, it has been photographed ONLY.



#132 - 1996 Freightliner FLD112 Dry Tender Truck (PZ6576)

1996 Freightliner FLD112 Dry Tender Truck (PZ6576), Cummins diesel engine, 10 speed transmission, air conditioning, heat, Am/Fm cassette radio, cruise control, engine brake, tandem axle, full screw, air ride suspension, 16 ton stainless steel dry tender box, side discharge auger, all hydraulic, roll over tarp, 315/80R22.5 front tires, 295/75R22.5 rear tires, Unit# 965. Notes: Needs batteries, current ones are bad. Item Location: New Hampton, IA 50659 Equipment Sold "AS IS, WHERE IS": All equipment/property is sold "AS IS, WHERE IS" with no warranty or guarantees, expressed or implied, No operational assessments or testing have been made by Del Peterson on this item, it has been photographed ONLY.



#133 - 2004 Chevrolet 2500HD Pickup (PZ6580)

2004 Chevrolet 2500HD Pickup (PZ6580), 4x4, gas engine, automatic transmission, air conditioning, heat, Am/Fm radio, running boards, 265/75R16, Unit# T405. Notes: No end gate, windshield is cracked, bad transmission, weak batteries. Item Location: New Hampton, IA 50659 Equipment Sold "AS IS, WHERE IS": All equipment/property is sold "AS IS, WHERE IS" with no warranty or guarantees, expressed or implied, No operational assessments or testing have been made by Del Peterson on this item, it has been photographed ONLY.



#134 - Pallet Spreader Parts (PZ6582)

Pallet Spreader Parts (PZ6582), Pallet of spreader parts. Notes: Item Location: New Hampton, IA 50659 Equipment Sold "AS IS, WHERE IS": All equipment/property is sold "AS IS, WHERE IS" with no warranty or guarantees, expressed or implied, No operational assessments or testing have been made by Del Peterson on this item, it has been photographed ONLY.



#135 - Pallet Spreader Parts (PZ6583)

Pallet Spreader Parts (PZ6583), Pallet of spreader parts. Notes: Item Location: New Hampton, IA 50659 Equipment Sold "AS IS, WHERE IS": All equipment/property is sold "AS IS, WHERE IS" with no warranty or guarantees, expressed or implied, No operational assessments or testing have been made by Del Peterson on this item, it has been photographed ONLY.



#136 - Digital Readouts (PZ6584)

Digital Readouts (PZ6584), Cardinal model 748 digital readout, Layco 310A digital readout. Notes: Item Location: New Hampton, IA 50659 Equipment Sold "AS IS, WHERE IS": All equipment/property is sold "AS IS, WHERE IS" with no warranty or guarantees, expressed or implied, No operational assessments or testing have been made by Del Peterson on this item, it has been photographed ONLY.



#137 - Precision Ednuron PSI (PZ6602)

Precision Ednuron PSI (PZ6602), 12 - Cases (4 x 1 gallon containers in each case) of Precision Ednuron PSI marking foam. Notes: Item Location: Lyle, MN 55953 Equipment Sold "AS IS, WHERE IS": All equipment/property is sold "AS IS, WHERE IS" with no warranty or guarantees, expressed or implied, No operational assessments or testing have been made by Del Peterson on this item, it has been photographed ONLY.



#138 - Precision Soft N (PZ6603)

Precision Soft N (PZ6603), 10 - Cases (6 x 1 gallon containers in each case), of Precision Soft -N. Notes: Item Location: Lyle, MN 55953 Equipment Sold "AS IS, WHERE IS": All equipment/property is sold "AS IS, WHERE IS" with no warranty or guarantees, expressed or implied, No operational assessments or testing have been made by Del Peterson on this item, it has been photographed ONLY.



#139 - Running Gear (PZ6595)

Running Gear (PZ6595), 4 wheel running gear, 5th wheel, 12.5L-15 flotation tires. Notes: Item Location: Lyle, MN 55953 Equipment Sold "AS IS, WHERE IS": All equipment/property is sold "AS IS, WHERE IS" with no warranty or guarantees, expressed or implied, No operational assessments or testing have been made by Del Peterson on this item, it has been photographed ONLY.



#140 - Running Gear (PZ6596)

Running Gear (PZ6596), 4 wheel running gear, 5th wheel, 12.5L-15 flotation tires. Notes: Item Location: Lyle, MN 55953 Equipment Sold "AS IS, WHERE IS": All equipment/property is sold "AS IS, WHERE IS" with no warranty or guarantees, expressed or implied, No operational assessments or testing have been made by Del Peterson on this item, it has been photographed ONLY.



#141 - Running Gear (PZ6597)

Running Gear (PZ6597), 4 wheel running gear, 5th wheel, 12.5L-15 flotation tires. Notes: Item Location: Lyle, MN 55953 Equipment Sold "AS IS, WHERE IS": All equipment/property is sold "AS IS, WHERE IS" with no warranty or guarantees, expressed or implied, No operational assessments or testing have been made by Del Peterson on this item, it has been photographed ONLY.



#142 - Running Gear (PZ6598)

Running Gear (PZ6598), 4 wheel running gear, 5th wheel, 11L-15 flotation tires. Notes: Item Location: Lyle, MN 55953 Equipment Sold "AS IS, WHERE IS": All equipment/property is sold "AS IS, WHERE IS" with no warranty or guarantees, expressed or implied, No operational assessments or testing have been made by Del Peterson on this item, it has been photographed ONLY.



#143 - Running Gear (PZ6599)

Running Gear (PZ6599), 4 wheel running gear, 5th wheel, 12.5L-15 flotation tires. Notes: Item Location: Lyle, MN 55953 Equipment Sold "AS IS, WHERE IS": All equipment/property is sold "AS IS, WHERE IS" with no warranty or guarantees, expressed or implied, No operational assessments or testing have been made by Del Peterson on this item, it has been photographed ONLY.



#144 - Running Gear (PZ6600)

Running Gear (PZ6600), 4 wheel running gear, 5th wheel, 12.5L-15 flotation tires. Notes: Item Location: Lyle, MN 55953 Equipment Sold "AS IS, WHERE IS": All equipment/property is sold "AS IS, WHERE IS" with no warranty or guarantees, expressed or implied, No operational assessments or testing have been made by Del Peterson on this item, it has been photographed ONLY.



#145 - Running Gear (PZ6601)

Running Gear (PZ6601), 4 wheel running gear, 5th wheel, 12.5L-15 flotation tires. Notes: Item Location: Lyle, MN 55953 Equipment Sold "AS IS, WHERE IS": All equipment/property is sold "AS IS, WHERE IS" with no warranty or guarantees, expressed or implied, No operational assessments or testing have been made by Del Peterson on this item, it has been photographed ONLY.



#146 - John Deere X300 Mower (PZ6586)

John Deere X300 Mower (PZ6586), John Deere X300 riding lawn mower, gas engine, hydrostatic transmission, shows 845 hours, Unit# 4505. Notes: Item Location: Dewar, IA 50623 Equipment Sold "AS IS, WHERE IS": All equipment/property is sold "AS IS, WHERE IS" with no warranty or guarantees, expressed or implied, No operational assessments or testing have been made by Del Peterson on this item, it has been photographed ONLY.



#147 - USC LP800 Seed Treater (PZ6574)

USC LP800 Seed Treater (PZ6574), USC LP800 seed treater, control panel, stainless steel tank. Notes: Item Location: Maynard, IA 50655 Equipment Sold "AS IS, WHERE IS": All equipment/property is sold "AS IS, WHERE IS" with no warranty or guarantees, expressed or implied, No operational assessments or testing have been made by Del Peterson on this item, it has been photographed ONLY.



#148 - Quality Plus Conveyor (PZ6572)

Quality Plus Conveyor (PZ6572), Quality Plus model 524EN conveyor, approx. 25', Dayton 2 hp electric motor. Notes: Item Location: Maynard, IA 50655 Equipment Sold "AS IS, WHERE IS": All equipment/property is sold "AS IS, WHERE IS" with no warranty or guarantees, expressed or implied, No operational assessments or testing have been made by Del Peterson on this item, it has been photographed ONLY.



#149 - Quality Plus Conveyor (PZ6573)

Quality Plus Conveyor (PZ6573), Quality Plus model 514E, conveyor, approx. 15', Dayton 2 hp electric motor. Notes: Item Location: Maynard, IA 50655 Equipment Sold "AS IS, WHERE IS": All equipment/property is sold "AS IS, WHERE IS" with no warranty or guarantees, expressed or implied, No operational assessments or testing have been made by Del Peterson on this item, it has been photographed ONLY.



#150 - 1999 Freightliner FL70 Liquid Truck (PZ6575)

1999 Freightliner FL70 Liquid Truck (PZ6575), Cummins diesel engine, Spicer 7 speed transmission, air conditioning, heat, single axle, 1600 gallon stainless steel liquid nurse tank, 11R22.5 tires, shows 202,933 miles, Unit# T195. Notes: No brakes, pops out of 5th gear, tank has a leak. Item Location: West Union, IA 52175 Equipment Sold "AS IS, WHERE IS": All equipment/property is sold "AS IS, WHERE IS" with no warranty or guarantees, expressed or implied, No operational assessments or testing have been made by Del Peterson on this item, it has been photographed ONLY.



#151 - Friesen Seed Trailer (PZ6594)

Friesen Seed Trailer (PZ6594), Friesen 220 bulk seed tender (S/N 9488), tandem axle, Honda GX240 8 hp gas engine, Central City model 615 scale, LT235/85R16 tires, Unit# 1110. Notes: Digital scale not working. Item Location: Nora Springs, IA 50458 Equipment Sold "AS IS, WHERE IS": All equipment/property is sold "AS IS, WHERE IS" with no warranty or guarantees, expressed or implied, No operational assessments or testing have been made by Del Peterson on this item, it has been photographed ONLY.



#152 - 2004 B & B Dry Tender Trailer (PZ6593)

2004 B & B Dry Tender Trailer (PZ6593), 2004 B & B dry tender trailer, tandem axle, cheater axle, Willmar 24 ton dry tender box (S/N 0062000425S), side discharge auger, hydraulic, roll over tarp, 255/70R22.5 tires, 235/75R17.5 cheater tires, Unit# 3513. Notes: New tag axle tires, fairley New brakes and ABS. Item Location: Nora Springs, IA 50458 Equipment Sold "AS IS, WHERE IS": All equipment/property is sold "AS IS, WHERE IS" with no warranty or guarantees, expressed or implied, No operational assessments or testing have been made by Del Peterson on this item, it has been photographed ONLY.



#153 - 1999 CaseIH 1840 Skid Steer (PZ6591)

1999 CaseIH 1840 Skid Steer (PZ6591), diesel engine, hydrostatic transmission, canopy, lights, 10-16.5 tires, shows 1938 hours, Unit# 599. Notes: Item Location: Ackley, IA 50601 Equipment Sold "AS IS, WHERE IS": All equipment/property is sold "AS IS, WHERE IS" with no warranty or guarantees, expressed or implied, No operational assessments or testing have been made by Del Peterson on this item, it has been photographed ONLY.



#154 - 2004 B & B Dry Tender Trailer (PZ6552)

2004 B & B Dry Tender Trailer (PZ6552), 2004 B & B dry tender trailer, tandem axle, cheater axle, Willmar 24 ton dry tender box, side discharge auger, hydraulic, roll over tarp, 255/70R22.5 tires, 235/75R17.5 cheater tires, Unit# 2006. Notes: Item Location: Maquoketa, IA 52060 Equipment Sold "AS IS, WHERE IS": All equipment/property is sold "AS IS, WHERE IS" with no warranty or guarantees, expressed or implied, No operational assessments or testing have been made by Del Peterson on this item, it has been photographed ONLY.



#155 - 2005 B & B Dry Tender Trailer (PZ6592)

2005 B & B Dry Tender Trailer (PZ6592), 2005 B & B dry tender trailer, tandem axle, cheater axle, Willmar 24 ton dry tender box (S/N 16SSJMSS104), side discharge auger, hydraulic, roll over tarp, 255/70R22.5 tires, 235/75R17.5 cheater tires, Unit# 3532. Notes: This is a 24 ton tender even though the markings say 16 ton. Item Location: Thornton, IA 50479 Equipment Sold "AS IS, WHERE IS": All equipment/property is sold "AS IS, WHERE IS" with no warranty or guarantees, expressed or implied, No operational assessments or testing have been made by Del Peterson on this item, it has been photographed ONLY.



#156 - 2007 GMC 2500HD Extended Cab Pickup (PZ6585)

2007 GMC 2500HD Extended Cab Pickup (PZ6585), 4x4, gas engine, automatic transmission, air conditioning, heat, Am/Fm radio, cruise control, running boards, LT265/75R16 tires, shows 144,306 miles, Unit# T455. Notes: Brakes are weak, power steering does not work, tailgate does not stay latched. Item Location: Waverly, IA 50677 Equipment Sold "AS IS, WHERE IS": All equipment/property is sold "AS IS, WHERE IS" with no warranty or guarantees, expressed or implied, No operational assessments or testing have been made by Del Peterson on this item, it has been photographed ONLY.



#157 - Waconia Dry Conveyor (PZ6589)

Waconia Dry Conveyor (PZ6589), Waconia approx 30' x 24" stainless steel dry fertilizer conveyor, electric motor, stand. Notes: Item Location: Aplington, IA 50604 Equipment Sold "AS IS, WHERE IS": All equipment/property is sold "AS IS, WHERE IS" with no warranty or guarantees, expressed or implied, No operational assessments or testing have been made by Del Peterson on this item, it has been photographed ONLY.



#158 - Chemical Eductor (PZ6588)

Chemical Eductor (PZ6588), Ace Roto-Mold 60 gallon poly chemical eductor, control box, Baldor 3 hp electric motor, MP pump. Notes: Item Location: Aplington, IA 50604 Equipment Sold "AS IS, WHERE IS": All equipment/property is sold "AS IS, WHERE IS" with no warranty or guarantees, expressed or implied, No operational assessments or testing have been made by Del Peterson on this item, it has been photographed ONLY.



#159 - 2011 Merritt MVT Dry Tender Trailer (PZ6587)

2011 Merritt MVT Dry Tender Trailer (PZ6587), Merritt model 38'6X096X068X2F-X2SCMVT dry tender trailer, tandem axle, Rapat stainless steel discharge conveyor, Rapat stainless steel under hopper conveyor, roll over tarp, 11R24.5 tires, Unit# 748. Notes: Item Location: Aplington, IA 50604 Equipment Sold "AS IS, WHERE IS": All equipment/property is sold "AS IS, WHERE IS" with no warranty or guarantees, expressed or implied, No operational assessments or testing have been made by Del Peterson on this item, it has been photographed ONLY.



#160 - 2010 Rheem (PZ6590)

2010 Rheem (PZ6590), Rheem air conditioner model 13AJA60A01757. Notes: Item Location: Aplington, IA 50604 Equipment Sold "AS IS, WHERE IS": All equipment/property is sold "AS IS, WHERE IS" with no warranty or guarantees, expressed or implied, No operational assessments or testing have been made by Del Peterson on this item, it has been photographed ONLY.



#161 - 2009 CaseIH 8120 AFS Combine (NP4634)

2009 CaseIH 8120 AFS Combine (NP4634), 2WD, Axial Flow, diesel engine, heat, air conditioning, Am/Fm radio, leather seat, Goodyear LSW900/50R46 front tires, shows 2,631 engine hours, shows 1,927 threshing hours. Notes: 126 hours on NEW rotor cage cone and impellers and wear strips. Item Location: Valley Center, KS 67147 Equipment Sold "AS IS, WHERE IS": All equipment/property is sold "AS IS, WHERE IS" with no warranty or guarantees, expressed or implied, No operational assessments or testing have been made by Del Peterson on this item, it has been photographed ONLY.



#162 - Fuel Tank (NP5011)

Fuel Tank (NP5011), dimensions 40" W x 24" H x 72" L. Notes: Fittings & Valves WILL BE REMOVED. Item Location: Seneca, KS 66538 Equipment Sold "AS IS, WHERE IS": All equipment/property is sold "AS IS, WHERE IS" with no warranty or guarantees, expressed or implied, No operational assessments or testing have been made by Del Peterson on this item, it has been photographed ONLY.



#163 - Poly Liquid Tank (NP5010)

Poly Liquid Tank (NP5010), 125 gallon capacity. Notes: Item Location: Seneca, KS 66538 Equipment Sold "AS IS, WHERE IS": All equipment/property is sold "AS IS, WHERE IS" with no warranty or guarantees, expressed or implied, No operational assessments or testing have been made by Del Peterson on this item, it has been photographed ONLY.



#164 - 2013 PJ Trailers Gooseneck Trailer (NP5014)

2013 PJ Trailers Gooseneck Trailer (NP5014), Model TRA/REM Gooseneck LY322, approx. 102" wide, approx. 22' main deck, approx. 123" dovetail, tandem axle, spring suspension, wood deck, ST235/85R16 tires, hydraulic dovetail, maximum load of the dovetail not to exceed 4,000lbs, front mount toolbox, Hopkins Break-Away System, Bulldog gooseneck hitch (Max GTWR 25,000lbs), trailer GVWR 25,000lbs. Notes: Item Location: Seneca, KS 66538 Equipment Sold "AS IS, WHERE IS": All equipment/property is sold "AS IS, WHERE IS" with no warranty or guarantees, expressed or implied, No operational assessments or testing have been made by Del Peterson on this item, it has been photographed ONLY.



#165 - 2014 PJ Trailers Gooseneck Trailer (NP5015)

2014 PJ Trailers Gooseneck Trailer (NP5015), Model TRA/REM Gooseneck LY322, approx. 102" wide, approx. 22' main deck, approx. 123" dovetail, tandem axle, spring suspension, wood deck, ST235/85R16 tires (spare tire), hydraulic dovetail, maximum load of the dovetail not to exceed 4,000lbs, front mount toolbox, Hopkins Break-Away System, Bulldog gooseneck hitch (Max GTWR 25,000lbs), trailer GVWR 25,000lbs. Notes: Item Location: Seneca, KS 66538 Equipment Sold "AS IS, WHERE IS": All equipment/property is sold "AS IS, WHERE IS" with no warranty or guarantees, expressed or implied, No operational assessments or testing have been made by Del Peterson on this item, it has been photographed ONLY.



#166 - 2005 GMC C7500 Dry Tender Truck (NP5020)

2005 GMC C7500 Dry Tender Truck (NP5020), Cat diesel engine (230HP), 6 speed manual transmission, heat, air conditioning, Am/Fm radio, single axle, spring suspensions, Doyle 10 ton stainless steel dry tender box, 2 compartment, KSI Model 1208 19 rear discharge conveyor, hydraulic, manual roll tarp, 11R22.5 rear tires, 295/75R22.5 front tires, extra rear mount fuel tank/fuel gun, Fill-Rite 15 GPM 12 volt DC Pump, GVWR 25,950lbs, shows 167,929 miles. Notes: Seller used this truck as both a dry fertilizer truck and a seed tender truck. Item Location: Seneca, KS 66538 Equipment Sold "AS IS, WHERE IS": All equipment/property is sold "AS IS, WHERE IS" with no warranty or guarantees, expressed or implied, No operational assessments or testing have been made by Del Peterson on this item, it has been photographed ONLY.



#167 - Hydraulic Winch Hitch (NP5007)

Hydraulic Winch Hitch (NP5007), hydraulic winch hitch for John Deere 2510 high speed toolbar. Notes: Item Location: Seneca, KS 66538 Equipment Sold "AS IS, WHERE IS": All equipment/property is sold "AS IS, WHERE IS" with no warranty or guarantees, expressed or implied, No operational assessments or testing have been made by Del Peterson on this item, it has been photographed ONLY.



#168 - Pexto Brake (NP5009)

Pexto Brake (NP5009), Model PX24A, capacity "16" soft steel. Notes: Item Location: Seneca, KS 66538 Equipment Sold "AS IS, WHERE IS": All equipment/property is sold "AS IS, WHERE IS" with no warranty or guarantees, expressed or implied, No operational assessments or testing have been made by Del Peterson on this item, it has been photographed ONLY.



#169 - MDS Skid Steer Bucket (NP5018)

MDS Skid Steer Bucket (NP5018), smooth bucket, approx. 88" width. Notes: Item Location: Seneca, KS 66538 Equipment Sold "AS IS, WHERE IS": All equipment/property is sold "AS IS, WHERE IS" with no warranty or guarantees, expressed or implied, No operational assessments or testing have been made by Del Peterson on this item, it has been photographed ONLY.



#170 - Holland 5th Wheel Plate (NP5008)

Holland 5th Wheel Plate (NP5008). Notes: Item Location: Seneca, KS 66538 Equipment Sold "AS IS, WHERE IS": All equipment/property is sold "AS IS, WHERE IS" with no warranty or guarantees, expressed or implied, No operational assessments or testing have been made by Del Peterson on this item, it has been photographed ONLY.



#171 - 1990 Peterbuilt 377 (CG282)

1990 Peterbuilt 377 (CG282), 9 speed transmission twin line wet kit, 3176 Cat 325 HP, air ride cab and suspension, good tires and brakes, cold AC, air slide 5th wheel. Notes: Item Location: London Mills, IL 61544 Equipment Sold "AS IS, WHERE IS": All equipment/property is sold "AS IS, WHERE IS" with no warranty or guarantees, expressed or implied, No operational assessments or testing have been made by Del Peterson on this item, it has been photographed ONLY.



#172 - 2008 Peterbilt 386 (PD320)

2008 Peterbilt 386 (PD320), ISX Cummins, 18 speed, 70 inch unibuilt sleeper, 235 Wheelbase, 3.36 rear end, 11R 22.5, service and maintenance records available, shows 930,000 miles. Notes: Item Location: Sanborn, IA 51248 Equipment Sold "AS IS, WHERE IS": All equipment/property is sold "AS IS, WHERE IS" with no warranty or guarantees, expressed or implied, No operational assessments or testing have been made by Del Peterson on this item, it has been photographed ONLY.



#173 - 2009 Case IH 7010 Combine (DR6436)

2009 Case IH 7010 Combine (DR6436), diesel engine, hydrostatic drive, cab heat air conditioning, fold down grain tank extensions, rear spreader, rock trap, AFS Pro 600 monitor, 540/65R30 rear directional tires, 900/60R32 front tires, shows 1325 engine hours, 926 separator hours. Notes: NEW feeder house chain, transition cone is replaced. Machine was thru dealer shop before 2016 season. Item Location: Ponca, NE 68770 Equipment Sold "AS IS, WHERE IS": All equipment/property is sold "AS IS, WHERE IS" with no warranty or guarantees, expressed or implied, No operational assessments or testing have been made by Del Peterson on this item, it has been photographed ONLY.



#174 - 2011 Case IH 3020 Flex Head (DR6437)

2011 Case IH 3020 Flex Head (DR6437), 30' Terra Flex header, hydraulic fore/aft. Notes: All NEW bearings and fingers in auger tube. Item Location: Ponca, NE 68770 Equipment Sold "AS IS, WHERE IS": All equipment/property is sold "AS IS, WHERE IS" with no warranty or guarantees, expressed or implied, No operational assessments or testing have been made by Del Peterson on this item, it has been photographed ONLY.



#175 - 2013 PK Head Cart (DR6438)

2013 PK Head Cart (DR6438), tandem rear axle, 5th wheel front axle, extendable tongue, 225/75R15 tires. Notes: Item Location: Ponca, NE 68770 Equipment Sold "AS IS, WHERE IS": All equipment/property is sold "AS IS, WHERE IS" with no warranty or guarantees, expressed or implied, No operational assessments or testing have been made by Del Peterson on this item, it has been photographed ONLY.



#176 - 2011 Case IH 3408 (DR6439)

2011 Case IH 3408 (DR6439), 8 row 30" corn head, hydraulic deck plates, 3 height sensors. Notes: Item Location: Ponca, NE 68770 Equipment Sold "AS IS, WHERE IS": All equipment/property is sold "AS IS, WHERE IS" with no warranty or guarantees, expressed or implied, No operational assessments or testing have been made by Del Peterson on this item, it has been photographed ONLY.



#177 - Kill Bros Head Cart (DR6440)

Kill Bros Head Cart (DR6440), adjustable head cart, adjustable tongue, 20.5X8.0-10 tires. Notes: Item Location: Ponca, NE 68770 Equipment Sold "AS IS, WHERE IS": All equipment/property is sold "AS IS, WHERE IS" with no warranty or guarantees, expressed or implied, No operational assessments or testing have been made by Del Peterson on this item, it has been photographed ONLY.



#178 - 2015 Coachman Freedom Express Camper (NP5023)

2015 Coachman Freedom Express Camper (NP5023), Model 233RBS, bumper pull, awning, dinette, kitchen, bathroom, fresh water capacity 36 gallon, grey water capacity 30 gallon, (2) slide-outs, queen bed folds down, sleeps 4 people, excellent condition, GVWR 7,000lb. Notes: Like New and in excellent condition. Purchased new on March 1, 2016. Item Location: Decaturville, TN 38329 Equipment Sold "AS IS, WHERE IS": All equipment/property is sold "AS IS, WHERE IS" with no warranty or guarantees, expressed or implied, No operational assessments or testing have been made by Del Peterson on this item, it has been photographed ONLY.



#179 - 2006 International 4300 Dry Van Truck (NP5022)

2006 International 4300 Dry Van Truck (NP5022), DT466E 210 diesel engine, Allison automatic transmission, heat, air conditioning, Am/Fm radio, air ride seat, power steering, single axle, hydraulic brakes, Van Body, rear rollup door, GAWR-Front 8,000lb, GAWR-Rear 17,500lb, 11R22.5 tires (front left tire needs replaced, front right tire 75%), brakes 50%, shows 308,777 miles. Notes: Item Location: Mattoon, IL 61938 Equipment Sold "AS IS, WHERE IS": All equipment/property is sold "AS IS, WHERE IS" with no warranty or guarantees, expressed or implied, No operational assessments or testing have been made by Del Peterson on this item, it has been photographed ONLY.



#180 - 2009 New Holland 9070 (DR6403)

2009 New Holland 9070 (DR6403), diesel engine, hydrostatic drive, cab heat air conditioning, straw chopper/spreader, grain tank extensions, AFS Pro 600 monitor, EZ-steer w/EZ-Guide screen, AM/FM radio, 540/65R30 rear directional tires, 520/85R42 front tires and duals, shows 1349 engine hours, 952 separator hours. Notes: Item Location: Bison, SD 57620 Equipment Sold "AS IS, WHERE IS": All equipment/property is sold "AS IS, WHERE IS" with no warranty or guarantees, expressed or implied, No operational assessments or testing have been made by Del Peterson on this item, it has been photographed ONLY.



#181 - 2011 Case IH 2152 Draper (DR6404)

2011 Case IH 2152 Draper (DR6404), 45' draper head, double reel, hydraulic fore/aft, transport gear. Notes: Item Location: Bison, SD 57620 Equipment Sold "AS IS, WHERE IS": All equipment/property is sold "AS IS, WHERE IS" with no warranty or guarantees, expressed or implied, No operational assessments or testing have been made by Del Peterson on this item, it has been photographed ONLY.



#182 - Massey 850 (DR6469)

Massey 850 (DR6469), diesel engine, hydrostatic drive, corn/soybean/grain machine, straw spreader, 23.1-30 tires, shows 5523 hours, SN 1696-24835, INCLUDES Massey 1163 6 row 30' corn head and steerable gear cart, Massey 1859 15' platform head, floating cutter bar AUGER IS DAMAGED, and steerable gear cart, Massey 1859 13' rigid platform head, this head was in working order but has some parts robbed off. Notes: Very clean working combine. This all sells as a package combine and 3 heads, 2 carts. Item Location: Loganville, WI 53943 Equipment Sold "AS IS, WHERE IS": All equipment/property is sold "AS IS, WHERE IS" with no warranty or guarantees, expressed or implied, No operational assessments or testing have been made by Del Peterson on this item, it has been photographed ONLY.



#183 - DMI Tool Bar (KMK1024)

DMI Tool Bar (KMK1024), 17 knives, 30" centers, hydraulic wings, 40 foot, ground driven pump, Demster pump model 100-0242, Continental NH3 equalizer, 8 ply tires, 7.60 - 15 tires, tool box, ag hitch. Notes: Item Location: Haddam, KS 66944 Equipment Sold "AS IS, WHERE IS": All equipment/property is sold "AS IS, WHERE IS" with no warranty or guarantees, expressed or implied, No operational assessments or testing have been made by Del Peterson on this item, it has been photographed ONLY.



#184 - CAT 963 Track Loader (KMK1020)

CAT 963 Track Loader (KMK1020), CAT 3304 motor, diesel, Hydrostat transmission, under carriage is 100% on rails, new rollers on right side, good used rollers on left side, 8 ft. bucket, shows 8080 hours. Notes: Bucket can be mounted or left off for transport. Item Location: Haddam, KS 66944 Equipment Sold "AS IS, WHERE IS": All equipment/property is sold "AS IS, WHERE IS" with no warranty or guarantees, expressed or implied, No operational assessments or testing have been made by Del Peterson on this item, it has been photographed ONLY.



#185 - CAT 613B Motor Scraper (KMK1027)

CAT 613B Motor Scraper (KMK1027), 3208 diesel engine, 4 speed power shift transmission, 4 forward and 2 reverse gears, paddle wheel chain in fair to good condition, Firestone 23.5 - 25 tires, shows 2643 hours. Notes: Item Location: Haddam, KS 66944 Equipment Sold "AS IS, WHERE IS": All equipment/property is sold "AS IS, WHERE IS" with no warranty or guarantees, expressed or implied, No operational assessments or testing have been made by Del Peterson on this item, it has been photographed ONLY.



#186 - Pemberton Loader Rake with Grapple (KMK1019)

Pemberton Loader Rake with Grapple (KMK1019), rake width interior 10' 1 3/8", exterior width 11' approximately, 9 tines on rake, 8 tines on grapple, tine spacing 15". Notes: Item Location: Haddam, KS 66944 Equipment Sold "AS IS, WHERE IS": All equipment/property is sold "AS IS, WHERE IS" with no warranty or guarantees, expressed or implied, No operational assessments or testing have been made by Del Peterson on this item, it has been photographed ONLY.



#187 - John Deere 925 Flex Head (KMK1021)

John Deere 925 Flex Head (KMK1021), 25', hydraulic fore/aft. Notes: Reel damage, 3 sections of one bat that are damaged. 2 reel bats supports are bent, 1 reel bat needs to be replaced. Item Location: Haddam, KS 66944 Equipment Sold "AS IS, WHERE IS": All equipment/property is sold "AS IS, WHERE IS" with no warranty or guarantees, expressed or implied, No operational assessments or testing have been made by Del Peterson on this item, it has been photographed ONLY.



#188 - Onan 30 EK Generator (KMK1025)

Onan 30 EK Generator (KMK1025), Ford power, engine displ. 240, model 30.0 EK - 15R 7590C, continous standby rating, capacity 30 kw, shows 1711 hours. Notes: Item Location: Haddam, KS 66944 Equipment Sold "AS IS, WHERE IS": All equipment/property is sold "AS IS, WHERE IS" with no warranty or guarantees, expressed or implied, No operational assessments or testing have been made by Del Peterson on this item, it has been photographed ONLY.



#189 - Kenhar Loader Forks (KMK1022)

Kenhar Loader Forks (KMK1022), came off CAT 963 loader, quick hitch, adjustable, forks are 6' long x 6" wide x 2 1/2" thick, 4000 x 600. Notes: Item Location: Haddam, KS 66944 Equipment Sold "AS IS, WHERE IS": All equipment/property is sold "AS IS, WHERE IS" with no warranty or guarantees, expressed or implied, No operational assessments or testing have been made by Del Peterson on this item, it has been photographed ONLY.



#190 - Homemade Loader Forks (KMK1023)

Homemade Loader Forks (KMK1023), 5" x 5" tubing, 58" long, 69" height on back, 55" exterior, 47 3/4" Interior, 6" thick. Notes: Item Location: Haddam, KS 66944 Equipment Sold "AS IS, WHERE IS": All equipment/property is sold "AS IS, WHERE IS" with no warranty or guarantees, expressed or implied, No operational assessments or testing have been made by Del Peterson on this item, it has been photographed ONLY.



#191 - Pemberton Quick Attachment (KMK1026)

Pemberton Quick Attachment (KMK1026), model number: KOMWA 200. Notes: Item Location: Haddam, KS 66944 Equipment Sold "AS IS, WHERE IS": All equipment/property is sold "AS IS, WHERE IS" with no warranty or guarantees, expressed or implied, No operational assessments or testing have been made by Del Peterson on this item, it has been photographed ONLY.



#192 - 2 Goodyear DT 712 Tires (KMK1028)

2 Goodyear DT 712 Tires (KMK1028), Radial DT 712. Notes: Item Location: Haddam, KS 66944 Equipment Sold "AS IS, WHERE IS": All equipment/property is sold "AS IS, WHERE IS" with no warranty or guarantees, expressed or implied, No operational assessments or testing have been made by Del Peterson on this item, it has been photographed ONLY.



#193 - 1998 CaseIH Axial-Flow 2144 Combine (PZ6609)

1998 CaseIH Axial-Flow 2144 Combine (PZ6609), diesel engine, hydrostatic transmission, air conditioning, heat, Am/Fm radio, 50% rubber front & back, Ag Leader PF Advantage monitor, shows 4846 engine & 3158 separator hours. Notes: Always shedded. Will go through on Farm Inspection. No leaks. Item Location: Rantoul, IL 61866 Equipment Sold "AS IS, WHERE IS": All equipment/property is sold "AS IS, WHERE IS" with no warranty or guarantees, expressed or implied, No operational assessments or testing have been made by Del Peterson on this item, it has been photographed ONLY.



#194 - 1982 IHC 3088 Tractor (PZ6610)

1982 IHC 3088 Tractor (PZ6610), diesel engine, manual transmission, OROPS, 1000/540 PTO, 2 port hydraulics, 3 point hitch with quick tach, front tires @ 90%, rear tires @ 50%, shows 5655 hours. Notes: Always shedded, repainted. Item Location: Rantoul, IL 61866 Equipment Sold "AS IS, WHERE IS": All equipment/property is sold "AS IS, WHERE IS" with no warranty or guarantees, expressed or implied, No operational assessments or testing have been made by Del Peterson on this item, it has been photographed ONLY.



#196 - GEHL 7190 Mixer Wagon (EG265)

GEHL 7190 Mixer Wagon (EG265), very nice piece, fed 200 ton of corn silage at the most, paint still on augers and unload apron, tires are good, 540 PTO, paint is faded on the front from setting in open front shed, always stored inside. Notes: Item Location: North Salem, IN 46165 Equipment Sold "AS IS, WHERE IS": All equipment/property is sold "AS IS, WHERE IS" with no warranty or guarantees, expressed or implied, No operational assessments or testing have been made by Del Peterson on this item, it has been photographed ONLY.



#197 - Oswalt 180 Penta Mixer Wagon (EG266)

Oswalt 180 Penta Mixer Wagon (EG266), 540 pto, 10.00-20 tires, has working set of scales, good working mixer. Notes: Item Location: North Salem, IN 46165 Equipment Sold "AS IS, WHERE IS": All equipment/property is sold "AS IS, WHERE IS" with no warranty or guarantees, expressed or implied, No operational assessments or testing have been made by Del Peterson on this item, it has been photographed ONLY.



#198 - New Holland 575 Square Baler (EG264)

New Holland 575 Square Baler (EG264), good older baler, very little paint wore off back wall of pickup, knives are good, new needles and hay dog springs last year, new clutch and dogs this year, has wagon chute and 1/4 turn chute. Notes: Item Location: North Salem, IN 46165 Equipment Sold "AS IS, WHERE IS": All equipment/property is sold "AS IS, WHERE IS" with no warranty or guarantees, expressed or implied, No operational assessments or testing have been made by Del Peterson on this item, it has been photographed ONLY.



#199 - MDS Bale Hugger (EG272)

MDS Bale Hugger (EG272), originally set up for John Deere tractor loaded, converted to skid steer, but could be changed back easily, new hoses and cylinder recently, ears that hook to cylinder have been welded and fixed right. Notes: Item Location: North Salem, IN 46165 Equipment Sold "AS IS, WHERE IS": All equipment/property is sold "AS IS, WHERE IS" with no warranty or guarantees, expressed or implied, No operational assessments or testing have been made by Del Peterson on this item, it has been photographed ONLY.



#200 - 1996 Terra Gator 1844 Air Spreader (DL133)

1996 Terra Gator 1844 Air Spreader (DL133), 3208 Cat engine, 6 speed auto with 3 speed aux, heat & a/c, 70' spread width, Dickey John Controller, Raven Phoenix receiver and Raven lightbar, 48x31.00-20 tires, brand new front & 30% rears, 500 hrs since reman 3208 Cat Motor, shows 4040 hours. Notes: Item Location: De Witt, IA 52742 Equipment Sold "AS IS, WHERE IS": All equipment/property is sold "AS IS, WHERE IS" with no warranty or guarantees, expressed or implied, No operational assessments or testing have been made by Del Peterson on this item, it has been photographed ONLY.



#201 - 2010 Case IH 7120 Combine (DR6482)

2010 Case IH 7120 Combine (DR6482), diesel engine, hydrostatic drive, cab heat/air conditioning, hydraulic rear wheel assist, AFS Pro 600 monitor, AM/FM radio, Mauer grain tank extensions, 2 grain tank cameras, 1 auger camera, straw spreader/chopper, 600/65R28 rear tires, 520/85R42 front tires and duals, shows 1361 engine hours, 943 separator hours. Notes: Included with combine is soybean and round bar concaves. Combine has NEW clean grain elevator chain, feeder house chain, grain tank auger, a/c hoses. 600 hour service was just done. Item Location: Wells, MN 56097 Equipment Sold "AS IS, WHERE IS": All equipment/property is sold "AS IS, WHERE IS" with no warranty or guarantees, expressed or implied, No operational assessments or testing have been made by Del Peterson on this item, it has been photographed ONLY.



#202 - 2011 Case IH 2162 Draper Head (DR6475)

2011 Case IH 2162 Draper Head (DR6475), 35' draper head, Case IH GI69515 adapter plate, Sukup air reel, head. Notes: Item Location: Wells, MN 56097 Equipment Sold "AS IS, WHERE IS": All equipment/property is sold "AS IS, WHERE IS" with no warranty or guarantees, expressed or implied, No operational assessments or testing have been made by Del Peterson on this item, it has been photographed ONLY.



#203 - 2011 Kill Bros Head Trailer (DR6476)

2011 Kill Bros Head Trailer (DR6476), model HC362, for 35' head, adjustable brackets, tandem rear axles, front 5th wheel steerable axle, 225/75R15 tires. Notes: Head Not Included. Item Location: Wells, MN 56097 Equipment Sold "AS IS, WHERE IS": All equipment/property is sold "AS IS, WHERE IS" with no warranty or guarantees, expressed or implied, No operational assessments or testing have been made by Del Peterson on this item, it has been photographed ONLY.



#204 - 2008 Draco Corn Head (DR6478)

2008 Draco Corn Head (DR6478), model N8, 8 row 30" head, automatic deck plates, NEW heavy duty toe drive gears and gear box, 2 choppers mounted at tire spacing, Insight head controller. Notes: Item Location: Wells, MN 56097 Equipment Sold "AS IS, WHERE IS": All equipment/property is sold "AS IS, WHERE IS" with no warranty or guarantees, expressed or implied, No operational assessments or testing have been made by Del Peterson on this item, it has been photographed ONLY.



#205 - Case IH Cart (DR6479)

Case IH Cart (DR6479), 4 wheel steerable gear 10" tires. Notes: Item Location: Wells, MN 56097 Equipment Sold "AS IS, WHERE IS": All equipment/property is sold "AS IS, WHERE IS" with no warranty or guarantees, expressed or implied, No operational assessments or testing have been made by Del Peterson on this item, it has been photographed ONLY.



#206 - 2012 USC BL7024 Conveyor (DR6470)

2012 USC BL7024 Conveyor (DR6470), series 4000, 70' portable conveyor, 24" cleated belt, electric up/down, starter box, 11L-15 tires. Notes: Item Location: Kingsley, IA 51028 Equipment Sold "AS IS, WHERE IS": All equipment/property is sold "AS IS, WHERE IS" with no warranty or guarantees, expressed or implied, No operational assessments or testing have been made by Del Peterson on this item, it has been photographed ONLY.



#207 - 2012 USC Under Unloader (DR6472)

2012 USC Under Unloader (DR6472), portable under truck/car unloader, 24" belt 1hp electric motor. Notes: Item Location: Kingsley, IA 51028 Equipment Sold "AS IS, WHERE IS": All equipment/property is sold "AS IS, WHERE IS" with no warranty or guarantees, expressed or implied, No operational assessments or testing have been made by Del Peterson on this item, it has been photographed ONLY.



#208 - 1992 Belarus 525M Tractor (PD406)

1992 Belarus 525M Tractor (PD406), 75 HP, 1430 Original hours, front wheel assist, tires are good, runs good, mowed last year, right brake and emergency need adjustments, leaks some hydraulic fluid, lights don't work/ Notes: Item Location: Plattsburg, MO 64477 Equipment Sold "AS IS, WHERE IS": All equipment/property is sold "AS IS, WHERE IS" with no warranty or guarantees, expressed or implied, No operational assessments or testing have been made by Del Peterson on this item, it has been photographed ONLY.



#209 - Dry End Gate (PZ6607)

Dry End Gate (PZ6607), New Leader end gate. Notes: Item Location: Hazleton, IA 50641 Equipment Sold "AS IS, WHERE IS": All equipment/property is sold "AS IS, WHERE IS" with no warranty or guarantees, expressed or implied, No operational assessments or testing have been made by Del Peterson on this item, it has been photographed ONLY.



#210 - John Deere 850 Dozer (TR3518)

John Deere 850 Dozer (TR3518), 10ft Straight Blade, Hydrostatic Drive, 24" Pads, Good Grozers, Approximately 75% Undercarriage, Shows 9229 hours, was used on farm not commercial. Notes: Item Location: Worthington, MO 63567 Equipment Sold "AS IS, WHERE IS": All equipment/property is sold "AS IS, WHERE IS" with no warranty or guarantees, expressed or implied, No operational assessments or testing have been made by Del Peterson on this item, it has been photographed ONLY.



#211 - Feteral Drive Over Hopper (CG311)

Feteral Drive Over Hopper (CG311), 10' ramps, 205/5R15 tires 70%. Notes: Item Location: Chariton, IA 50049 Equipment Sold "AS IS, WHERE IS": All equipment/property is sold "AS IS, WHERE IS" with no warranty or guarantees, expressed or implied, No operational assessments or testing have been made by Del Peterson on this item, it has been photographed ONLY.



#212 - John Deere 308 Grain Auger (CG317)

John Deere 308 Grain Auger (CG317), 8" diameter, 540 PTO drive, working unit. Notes: Item Location: Chariton, IA 50049 Equipment Sold "AS IS, WHERE IS": All equipment/property is sold "AS IS, WHERE IS" with no warranty or guarantees, expressed or implied, No operational assessments or testing have been made by Del Peterson on this item, it has been photographed ONLY.



#213 - John Deere 946 MOCO (CG316)

John Deere 946 MOCO (CG316), 12'6" width, impeller, 2pt hookup, 1000 PTO, hyd. Tilt, 12.5L15 tires, lights. Notes: Item Location: Chariton, IA 50049 Equipment Sold "AS IS, WHERE IS": All equipment/property is sold "AS IS, WHERE IS" with no warranty or guarantees, expressed or implied, No operational assessments or testing have been made by Del Peterson on this item, it has been photographed ONLY.



#214 - Vermeer WR22 (CG312)

Vermeer WR22 (CG312), 10 wheel rake, good tires. Notes: Item Location: Chariton, IA 50049 Equipment Sold "AS IS, WHERE IS": All equipment/property is sold "AS IS, WHERE IS" with no warranty or guarantees, expressed or implied, No operational assessments or testing have been made by Del Peterson on this item, it has been photographed ONLY.



#215 - John Deere 843 Corn Head (CG319)

John Deere 843 Corn Head (CG319), 8 row, 30". Notes: Item Location: Chariton, IA 50049 Equipment Sold "AS IS, WHERE IS": All equipment/property is sold "AS IS, WHERE IS" with no warranty or guarantees, expressed or implied, No operational assessments or testing have been made by Del Peterson on this item, it has been photographed ONLY.



#216 - John Deere 235 Disk (CG313)

John Deere 235 Disk (CG313), 26' width, 18" front blades, 20" rear blades, 9.5L15 tires. Notes: Item Location: Chariton, IA 50049 Equipment Sold "AS IS, WHERE IS": All equipment/property is sold "AS IS, WHERE IS" with no warranty or guarantees, expressed or implied, No operational assessments or testing have been made by Del Peterson on this item, it has been photographed ONLY.



#217 - John Deere 980 Cultivator (CG314)

John Deere 980 Cultivator (CG314), 30' width, 7" sweeps, spike tooth harrow, no welds used this spring, 11L15 tires. Notes: Item Location: Chariton, IA 50049 Equipment Sold "AS IS, WHERE IS": All equipment/property is sold "AS IS, WHERE IS" with no warranty or guarantees, expressed or implied, No operational assessments or testing have been made by Del Peterson on this item, it has been photographed ONLY.



#218 - John Deere 1010 Cultivator (CG315)

John Deere 1010 Cultivator (CG315), 24' width, 3 bar harrow. Notes: Item Location: Chariton, IA 50049 Equipment Sold "AS IS, WHERE IS": All equipment/property is sold "AS IS, WHERE IS" with no warranty or guarantees, expressed or implied, No operational assessments or testing have been made by Del Peterson on this item, it has been photographed ONLY.



#219 - Sprayer Tires 38/90R46 (CG318)

Sprayer Tires 38/90R46 (CG318), 10 bolt Rogator rims, Goodyear Radial Tubeless. Notes: Item Location: Chariton, IA 50049 Equipment Sold "AS IS, WHERE IS": All equipment/property is sold "AS IS, WHERE IS" with no warranty or guarantees, expressed or implied, No operational assessments or testing have been made by Del Peterson on this item, it has been photographed ONLY.



#220 - 510 International Loader Tractor (PD426)

510 International Loader Tractor (PD426), Bucket, runs and operates good, new drive shaft & u-joints in center, 3 speed shuttle shift, looks good for age, unsure of hours, has some rust, 16.9 x 24 tires, front fair and back worn. Notes: Item Location: Pinckneyville, IL 62274 Equipment Sold "AS IS, WHERE IS": All equipment/property is sold "AS IS, WHERE IS" with no warranty or guarantees, expressed or implied, No operational assessments or testing have been made by Del Peterson on this item, it has been photographed ONLY.



#221 - 2015 Top Notch Loader Mounted Bale Spreader (EG257)

2015 Top Notch Loader Mounted Bale Spreader (EG257), skid steer plate, hydraulically driven rotors and apron chain, manually controlled deflector shield, machine can handle 5'x6' round bales and throw corn stalks 15'-20', machine will also spread straw, can be used self-loading, very low use, stored inside, E12. Notes: Item Location: Yorkville, IL 60560 Equipment Sold "AS IS, WHERE IS": All equipment/property is sold "AS IS, WHERE IS" with no warranty or guarantees, expressed or implied, No operational assessments or testing have been made by Del Peterson on this item, it has been photographed ONLY.



#222 - Livestock Scale (EG258)

Livestock Scale (EG258), Digistar 3300# weigh bars, Digistar model SW 300 battery powered scale head, can be used w 110v, but I do not have the cord, homebuilt, low use, stored inside, cage can come off and be used as a platform scale. Notes: Item Location: Yorkville, IL 60560 Equipment Sold "AS IS, WHERE IS": All equipment/property is sold "AS IS, WHERE IS" with no warranty or guarantees, expressed or implied, No operational assessments or testing have been made by Del Peterson on this item, it has been photographed ONLY.



#223 - Priefert S01 Rancher 97 Model Squeeze Chute (EG259)

Priefert S01 Rancher 97 Model Squeeze Chute (EG259), includes manual head gate, very little use, stored inside. Notes: Item Location: Yorkville, IL 60560 Equipment Sold "AS IS, WHERE IS": All equipment/property is sold "AS IS, WHERE IS" with no warranty or guarantees, expressed or implied, No operational assessments or testing have been made by Del Peterson on this item, it has been photographed ONLY.



#224 - John Deere 93A Series 3 Point Mount Backhoe (EG262)

John Deere 93A Series 3 Point Mount Backhoe (EG262), Prince model HC-pto-3A, 3AC pump, self-contained, small 1000, 1 1/4" inlet, 3/4" outlet, 25 gallon reservoir tank, 18" bucket. Notes: Item Location: Yorkville, IL 60560 Equipment Sold "AS IS, WHERE IS": All equipment/property is sold "AS IS, WHERE IS" with no warranty or guarantees, expressed or implied, No operational assessments or testing have been made by Del Peterson on this item, it has been photographed ONLY.



#225 - Land Pro 80' Boom (TH148)

Land Pro 80' Boom (TH148), L&D 80ft, self leveling, 20" nozzle spacing, single nozzle. Notes: Has a Raven 5 section ball valve control available at a separate cost. Item Location: Waltham, MN 55982 Equipment Sold "AS IS, WHERE IS": All equipment/property is sold "AS IS, WHERE IS" with no warranty or guarantees, expressed or implied, No operational assessments or testing have been made by Del Peterson on this item, it has been photographed ONLY.



#226 - Arts-Way 425 Grinder/Mixer (EG263)

Arts-Way 425 Grinder/Mixer (EG263), Weigh-Tronix scale, 1/4" and 3/8" screens. Notes: Item Location: Yorkville, IL 60560 Equipment Sold "AS IS, WHERE IS": All equipment/property is sold "AS IS, WHERE IS" with no warranty or guarantees, expressed or implied, No operational assessments or testing have been made by Del Peterson on this item, it has been photographed ONLY.



#227 - Grain Storage Conveyor (TR3513)

Grain Storage Conveyor (TR3513), 160' X 42" incline open belt conveyor with truss support and walkway with incline belt. The auction does not include the vertical supports. The drive is a 50 hp three phase 230/460 volt electric motor with a Dodge TDT 8 reducer. A manual swivel 16" round spout discharge helps to distribute the fines as the pile is loading. Can fill a round 750,000 bu pile from a stationary mount. The conveyor is cut into sections at splices. Notes: Loading of conveyor included. Item Location: Forrest, IL 61741 Equipment Sold "AS IS, WHERE IS": All equipment/property is sold "AS IS, WHERE IS" with no warranty or guarantees, expressed or implied, No operational assessments or testing have been made by Del Peterson on this item, it has been photographed ONLY.



#228 - Schlagel ICV Horizontal / Vertical Drag Conveyor (TR3514)

Schlagel ICV Horizontal / Vertical Drag Conveyor (TR3514), for 48' bin, This 2007 Schlagel ICV 1219 conveyor has a 15 hp three phase 230/460 volt electric motor with a Dodge TXT 525 gear reducer. The serial # is 130618-7. This conveys the commodity horizontal out from under the bin, then vertical 13' 6" above top of tunnel. Rated at 5100 bu/hr. Notes: Loading of conveyor included. Item Location: Forrest, IL 61741 Equipment Sold "AS IS, WHERE IS": All equipment/property is sold "AS IS, WHERE IS" with no warranty or guarantees, expressed or implied, No operational assessments or testing have been made by Del Peterson on this item, it has been photographed ONLY.



#229 - 8000 bu/hr Dump Pit Screw Conveyor (TR3518)

8000 bu/hr Dump Pit Screw Conveyor (TR3518), This heavy duty Union Iron 7' X 18" side inlet screw conveyor is designed to be flood fed in a grain dump pit. The inlet control baffle can be closed under load. The long inlet which measures 6" X 50" allows for greater slope on pit walls. The conveyor can be directly mounted to the leg trunking. Notes: Loading of conveyor included. Item Location: Forrest, IL 61741 Equipment Sold "AS IS, WHERE IS": All equipment/property is sold "AS IS, WHERE IS" with no warranty or guarantees, expressed or implied, No operational assessments or testing have been made by Del Peterson on this item, it has been photographed ONLY.



#230 - 12" Galvanized Grain Down Spout (TR3515)

12" Galvanized Grain Down Spout (TR3515), This lot is for two spouts one 7ga thick, the other 10ga, each having three truss supports and grain flow retarders midway. One is 97' the other 92'. Never turned. Notes: Loading included. Item Location: Forrest, IL 61741 Equipment Sold "AS IS, WHERE IS": All equipment/property is sold "AS IS, WHERE IS" with no warranty or guarantees, expressed or implied, No operational assessments or testing have been made by Del Peterson on this item, it has been photographed ONLY.



#231 - 12" Galvanized Grain Down Spout (TR3516)

12" Galvanized Grain Down Spout (TR3516), This lot is for two spouts each 10ga thick having one truss support. No grain flow retarders. One is 105' the other 125'. Never turned. Notes: Loading included. Item Location: Forrest, IL 61741 Equipment Sold "AS IS, WHERE IS": All equipment/property is sold "AS IS, WHERE IS" with no warranty or guarantees, expressed or implied, No operational assessments or testing have been made by Del Peterson on this item, it has been photographed ONLY.



#232 - 12" Galvanized Grain Down Spout (TR3517)

12" Galvanized Grain Down Spout (TR3517), the photos are of similar spout, but not actual please read description. This lot is for three spouts each 10ga thick having no truss support. No grain flow retarders. The lengths are 17', 41' and 38'. Never turned. Notes: Loading included. Item Location: Forrest, IL 61741 Equipment Sold "AS IS, WHERE IS": All equipment/property is sold "AS IS, WHERE IS" with no warranty or guarantees, expressed or implied, No operational assessments or testing have been made by Del Peterson on this item, it has been photographed ONLY.



#233 - 17,000 Gallon Steel Tank (PD412)

17,000 Gallon Steel Tank (PD412), 1-3 inch valve, 1-2 inch valve, 1-1 inch sight tube, manhole. Notes: This item must be removed by September 18th, 2017 with no exceptions. Dismantle, removal and transportation is at the expense, risk and liability of the buyer. Item Location: Mount Pleasant, IA 52641 Equipment Sold "AS IS, WHERE IS": All equipment/property is sold "AS IS, WHERE IS" with no warranty or guarantees, expressed or implied, No operational assessments or testing have been made by Del Peterson on this item, it has been photographed ONLY.



#234 - 17,000 Gallon Steel Tank (PD411)

17,000 Gallon Steel Tank (PD411), manhole, 2-3 inch valves, 1 inch sight tube. Notes: This item must be removed by September 18th, 2017 with no exceptions. Dismantle, removal and transportation is at the expense, risk and liability of the buyer. Item Location: Mount Pleasant, IA 52641 Equipment Sold "AS IS, WHERE IS": All equipment/property is sold "AS IS, WHERE IS" with no warranty or guarantees, expressed or implied, No operational assessments or testing have been made by Del Peterson on this item, it has been photographed ONLY.



#235 - 15000 Gallon Steel Tank (PD408)

15000 Gallon Steel Tank (PD408). Notes: This item must be removed by September 18th, 2017 with no exceptions. Dismantle, removal and transportation is at the expense, risk and liability of the buyer. Item Location: Mount Pleasant, IA 52641 Equipment Sold "AS IS, WHERE IS": All equipment/property is sold "AS IS, WHERE IS" with no warranty or guarantees, expressed or implied, No operational assessments or testing have been made by Del Peterson on this item, it has been photographed ONLY.



#236 - 6500 Gallon Poly Water Tank (PD406)

6500 Gallon Poly Water Tank (PD406). Notes: This item must be removed by September 18th, 2017 with no exceptions. Dismantle, removal and transportation is at the expense, risk and liability of the buyer. Item Location: Mount Pleasant, IA 52641 Equipment Sold "AS IS, WHERE IS": All equipment/property is sold "AS IS, WHERE IS" with no warranty or guarantees, expressed or implied, No operational assessments or testing have been made by Del Peterson on this item, it has been photographed ONLY.



#237 - 17,000 Gallon Steel Tank (PD413)

17,000 Gallon Steel Tank (PD413), 2-3 inch valves, 1-2 inch valve, 1 inch sight tube, manhole. Notes: This item must be removed by September 18th, 2017 with no exceptions. Dismantle, removal and transportation is at the expense, risk and liability of the buyer. Item Location: Mount Pleasant, IA 52641 Equipment Sold "AS IS, WHERE IS": All equipment/property is sold "AS IS, WHERE IS" with no warranty or guarantees, expressed or implied, No operational assessments or testing have been made by Del Peterson on this item, it has been photographed ONLY.



#238 - 2014 John Deere 304K Wheel Loader (PD419)

2014 John Deere 304K Wheel Loader (PD419), one owner, 742 hours, 1.1 yard bucket, skid steer hook up, quick disconnect, AC/Heat/Radio, auxiliary hydraulics, tires 80%, machine runs and operates great, it's ready to work. Notes: Still in use, mirrors on machine will be fixed before sold. Item Location: Armada, MI 48005 Equipment Sold "AS IS, WHERE IS": All equipment/property is sold "AS IS, WHERE IS" with no warranty or guarantees, expressed or implied, No operational assessments or testing have been made by Del Peterson on this item, it has been photographed ONLY.



#239 - 1998 John Deere 7810 Tractor (PD425)

1998 John Deere 7810 Tractor (PD425), 7252 hours, powershift transmission, 4wd, 3 rear remotes, quick hitch, new 18.4-42 rears, 65% 16.9R 28 fronts, inner wheel weight hubs for duals, do not have duals for it, very nice original hour tractor, no oil leaks, nice tight tractor, glass is good, sheet metal is straight, no rusted fenders, all lights and everything works, AC blows cold, all around great tractor. Notes: Item Location: Armada, MI 48005 Equipment Sold "AS IS, WHERE IS": All equipment/property is sold "AS IS, WHERE IS" with no warranty or guarantees, expressed or implied, No operational assessments or testing have been made by Del Peterson on this item, it has been photographed ONLY.



#240 - 2010 John Deere 8270R Tractor (EG261)

2010 John Deere 8270R Tractor (EG261), Greenstar ready, 38 inch front duals, 50 inch rear, 4 hydraulics, front weights, approximately 1508 hours, 2nd owner, owned since 200 hours, super sharp, Globe and monitor NOT INCLUDED. Notes: Globe and monitor NOT INCLUDED. Item Location: West Union, IL 62477 Equipment Sold "AS IS, WHERE IS": All equipment/property is sold "AS IS, WHERE IS" with no warranty or guarantees, expressed or implied, No operational assessments or testing have been made by Del Peterson on this item, it has been photographed ONLY.



#241 - 3 Point Round Bale Spear/Forks (PD423)

3 Point Round Bale Spear/Forks (PD423), works good, fresh paint, will work on quick attach and regular 3 point, ready to go. Notes: Item Location: Jackson, MN 56143 Equipment Sold "AS IS, WHERE IS": All equipment/property is sold "AS IS, WHERE IS" with no warranty or guarantees, expressed or implied, No operational assessments or testing have been made by Del Peterson on this item, it has been photographed ONLY.



#242 - John Deere Rake (PD424)

John Deere Rake (PD424), 540 pto driven, 3 point or tough options, lots of new teeth. Notes: Item Location: Jackson, MN 56143 Equipment Sold "AS IS, WHERE IS": All equipment/property is sold "AS IS, WHERE IS" with no warranty or guarantees, expressed or implied, No operational assessments or testing have been made by Del Peterson on this item, it has been photographed ONLY.



#243 - Snapper 60 Inch Zero Turn Mower (PD310)

Snapper 60 Inch Zero Turn Mower (PD310), 20 HP, opposed twin Kohler, won't fire. Notes: Item Location: Jackson, MN 56143 Equipment Sold "AS IS, WHERE IS": All equipment/property is sold "AS IS, WHERE IS" with no warranty or guarantees, expressed or implied, No operational assessments or testing have been made by Del Peterson on this item, it has been photographed ONLY.



#244 - John Deere 212 Utility Tractor (PD376)

John Deere 212 Utility Tractor (PD376), cab, radio, speakers, blinkers, lights, hydraulic lift, electric shoot, cab heats up nicely in the winter, rebuilt last season. Notes: Item Location: Jackson, MN 56143 Equipment Sold "AS IS, WHERE IS": All equipment/property is sold "AS IS, WHERE IS" with no warranty or guarantees, expressed or implied, No operational assessments or testing have been made by Del Peterson on this item, it has been photographed ONLY.



#245 - 2009 50th Anniversary Skidoo 800 Summit 154 Ptek (PD377)

2009 50th Anniversary Skidoo 800 Summit 154 Ptek (PD377), 5900 miles, new track, new rails, new runners, she's ready to rip the trails up or climb the side of a mountain, you won't find a nicer sled. Notes: Item Location: Jackson, MN 56143 Equipment Sold "AS IS, WHERE IS": All equipment/property is sold "AS IS, WHERE IS" with no warranty or guarantees, expressed or implied, No operational assessments or testing have been made by Del Peterson on this item, it has been photographed ONLY.



#246 - 3 Point Blade (PD421)

3 Point Blade (PD421), will work with regular 3 point and quick attach, fresh paint, adjustable left to right and tilt, 7 foot cutting width, ready to go. Notes: Item Location: Jackson, MN 56143 Equipment Sold "AS IS, WHERE IS": All equipment/property is sold "AS IS, WHERE IS" with no warranty or guarantees, expressed or implied, No operational assessments or testing have been made by Del Peterson on this item, it has been photographed ONLY.



#247 - 3 Point 2 Quick Attach (PD422)

3 Point 2 Quick Attach (PD422), works good, long handles so you don't have to get out of your tractor, will work for small tractors and anything up to 150HP, ready to go. Notes: Item Location: Jackson, MN 56143 Equipment Sold "AS IS, WHERE IS": All equipment/property is sold "AS IS, WHERE IS" with no warranty or guarantees, expressed or implied, No operational assessments or testing have been made by Del Peterson on this item, it has been photographed ONLY.



#248 - 3 Pt. 5 Wheel Rake (JK173)

3 Pt. 5 Wheel Rake (JK173), Clean with all 5 wheels in good condition, #7. Notes: Item Location: Maurice, IA 51036 Equipment Sold "AS IS, WHERE IS": All equipment/property is sold "AS IS, WHERE IS" with no warranty or guarantees, expressed or implied, No operational assessments or testing have been made by Del Peterson on this item, it has been photographed ONLY.



#249 - Mitsubishi SW 500 Payloader (JK176)

Mitsubishi SW 500 Payloader (JK176), Nice small loader with grapple and diesel engine, 13,200 miles, #10. Notes: Item Location: Maurice, IA 51036 Equipment Sold "AS IS, WHERE IS": All equipment/property is sold "AS IS, WHERE IS" with no warranty or guarantees, expressed or implied, No operational assessments or testing have been made by Del Peterson on this item, it has been photographed ONLY.



#250 - M12 Ton Allis Chalmers Crawler loader with trailer (JK168)

12 Ton Allis Chalmers Crawler loader with trailer (JK168), Good running unit but could use battery, #2. Notes: Item Location: Maurice, IA 51036 Equipment Sold "AS IS, WHERE IS": All equipment/property is sold "AS IS, WHERE IS" with no warranty or guarantees, expressed or implied, No operational assessments or testing have been made by Del Peterson on this item, it has been photographed ONLY.



#251 - Disc Mower (JK175)

Disc Mower (JK175), Bar, discs and blades are in great shape, #9. Notes: Mower for parts, gearbox is out. Item Location: Maurice, IA 51036 Equipment Sold "AS IS, WHERE IS": All equipment/property is sold "AS IS, WHERE IS" with no warranty or guarantees, expressed or implied, No operational assessments or testing have been made by Del Peterson on this item, it has been photographed ONLY.



#252 - John Deere 7100 3 Pt 6 Row Planter (JK171)

John Deere 7100 3 Pt 6 Row Planter (JK171), Clean unit with good paint and tires, no monitor or marker arms, #5. Notes: Item Location: Maurice, IA 51036 Equipment Sold "AS IS, WHERE IS": All equipment/property is sold "AS IS, WHERE IS" with no warranty or guarantees, expressed or implied, No operational assessments or testing have been made by Del Peterson on this item, it has been photographed ONLY.



#253 - Semi Dolly (JK177)

Semi Dolly (JK177), Nice, clean, single axle dolly, pindle and hitch pin setup, #11. Notes: Item Location: Maurice, IA 51036 Equipment Sold "AS IS, WHERE IS": All equipment/property is sold "AS IS, WHERE IS" with no warranty or guarantees, expressed or implied, No operational assessments or testing have been made by Del Peterson on this item, it has been photographed ONLY.



#254 - 1994 Volvo White GMC Semi (JK167)

1994 Volvo White GMC Semi (JK167), engine TD123ED, 410 hp, good tires and brakes, tan in color, in nice condition, used last year to haul grain, #1, shows 599,400 miles. Notes: Item Location: Maurice, IA 51036 Equipment Sold "AS IS, WHERE IS": All equipment/property is sold "AS IS, WHERE IS" with no warranty or guarantees, expressed or implied, No operational assessments or testing have been made by Del Peterson on this item, it has been photographed ONLY.



#255 - John Deere 12 Row Marker Arms (JK172)

John Deere 12 Row Marker Arms (JK172), #6. Notes: Item Location: Maurice, IA 51036 Equipment Sold "AS IS, WHERE IS": All equipment/property is sold "AS IS, WHERE IS" with no warranty or guarantees, expressed or implied, No operational assessments or testing have been made by Del Peterson on this item, it has been photographed ONLY.



#256 - 4 John Deere Bean Head Snoots (JK174)

4 John Deere Bean Head Snoots (JK174), 2 sets of snoots for bean head, #8. Notes: Item Location: Maurice, IA 51036 Equipment Sold "AS IS, WHERE IS": All equipment/property is sold "AS IS, WHERE IS" with no warranty or guarantees, expressed or implied, No operational assessments or testing have been made by Del Peterson on this item, it has been photographed ONLY.



#257 - John Deere 530 3 pt Caddy (JK169)

John Deere 530 3 pt Caddy (JK169), Super clean unit with good paint, tires and hydraulics, #3. Notes: Item Location: Maurice, IA 51036 Equipment Sold "AS IS, WHERE IS": All equipment/property is sold "AS IS, WHERE IS" with no warranty or guarantees, expressed or implied, No operational assessments or testing have been made by Del Peterson on this item, it has been photographed ONLY.



#258 - Springland Grain Sweep (PZ6606)

Springland Grain Sweep (PZ6606), Springland 6000 Series grain sweep, its for a 105' bin, 30 hp electric motor, 2 year old hydraulic pump, New gear box, setup for 440 power. Notes: Item Location: Red Oak, IA 51566 Equipment Sold "AS IS, WHERE IS": All equipment/property is sold "AS IS, WHERE IS" with no warranty or guarantees, expressed or implied, No operational assessments or testing have been made by Del Peterson on this item, it has been photographed ONLY.



#259 - NH3 Nurse Tank (PZ6605)

NH3 Nurse Tank (PZ6605), 1000 gallon NH3 nurse tank, center fill, auto steer gear, wash tank, telescoping tongue, 11L-15 flotation tires, data plate, New valves in 2014. Notes: Item Location: Lebanon, IN 46052 Equipment Sold "AS IS, WHERE IS": All equipment/property is sold "AS IS, WHERE IS" with no warranty or guarantees, expressed or implied, No operational assessments or testing have been made by Del Peterson on this item, it has been photographed ONLY.



#260 - 2004 New Holland Payloader (PZ6604)

2004 New Holland Payloader (PZ6604), New Holland LW170TC payloader, 8.3 Cummins diesel engine, 4 speed transmission, air conditioning, heat, cab, lights, 3.5 quick tach bucket, 20.5 x 25 tires in good shape, approx. 6000 hours. Notes: Item Location: Lebanon, IN 46052 Equipment Sold "AS IS, WHERE IS": All equipment/property is sold "AS IS, WHERE IS" with no warranty or guarantees, expressed or implied, No operational assessments or testing have been made by Del Peterson on this item, it has been photographed ONLY.



#261 - Steel Grain Leg (NP5026)

Steel Grain Leg (NP5026), 95' discharge height, 350' of 8" downspout piping, 10" swing hopper auger, 9" x 6" cups, 13" x 8.5" trunking, all cable sells with it. Notes: Delivery options available. Please contact the seller for more information. Item Location: Baring, MO 63531 Equipment Sold "AS IS, WHERE IS": All equipment/property is sold "AS IS, WHERE IS" with no warranty or guarantees, expressed or implied, No operational assessments or testing have been made by Del Peterson on this item, it has been photographed ONLY.



#262 - 2001 Case IH 4300FLX Spreader (PD420)

2001 Case IH 4300FLX Spreader (PD420), 60 foot 438 flex air boom type, shows 7587 hours, Raven Smarttrax full auto guide with color display, Cummins motor, Allison automatic transmission, AC/Heat, air ride seat, tires are 75% front and 70% rear, very nice well maintained spreader. Notes: Item Location: Edgeley, ND 58433 Equipment Sold "AS IS, WHERE IS": All equipment/property is sold "AS IS, WHERE IS" with no warranty or guarantees, expressed or implied, No operational assessments or testing have been made by Del Peterson on this item, it has been photographed ONLY.



#263 - Set of Top - Air Saddle Tanks 240 gal each (MH194)

Set of Top - Air Saddle Tanks 240 gal each (MH194), top fill, plumbing in good condition. Notes: Item Location: Waterloo, IA 50701 Equipment Sold "AS IS, WHERE IS": All equipment/property is sold "AS IS, WHERE IS" with no warranty or guarantees, expressed or implied, No operational assessments or testing have been made by Del Peterson on this item, it has been photographed ONLY.



#264 - Fat Tank 2000 Gallon (EG263)

Fat Tank 2000 Gallon (EG263), heated natural gas, everything worked last time in use. Notes: Item Location: Cascade, IA 52033 Equipment Sold "AS IS, WHERE IS": All equipment/property is sold "AS IS, WHERE IS" with no warranty or guarantees, expressed or implied, No operational assessments or testing have been made by Del Peterson on this item, it has been photographed ONLY.



#267 - 2010 Bruneumatic 3 Box Seed Tender with 2009 Corn Pro Gooseneck Trailer (EG267)

2010 Bruneumatic 3 Box Seed Tender with 2009 Corn Pro Gooseneck Trailer (EG267), 4" vacuum 3-box seed tender on 20+5' 2009 Corn Pro trailer, both bought new and always kept inside, trailer only used with seed tender and has dovetail rear that also raises for full 25' surface, included with planter tube and cyclone for Kinzie 3660, tube for a different planter of your choice is available from Illinois manufacturer, also includes a spare cyclone, talc injector, remote start/stop touch and blow and Scales, would only need a Digistar GT400 display to complete, S/N: Bruneumatic 650-1109, Corn Pro. Notes: Item Location: El Paso, IL 61738 Equipment Sold "AS IS, WHERE IS": All equipment/property is sold "AS IS, WHERE IS" with no warranty or guarantees, expressed or implied, No operational assessments or testing have been made by Del Peterson on this item, it has been photographed ONLY.



#268 - Wilrich Cultivator (DR6454)

Wilrich Cultivator (DR6454), model 1630, 16 row 30" S Tine cultivator, 3 point mount, hydraulic folding wings. Notes: Item Location: Cokato, MN 55321 Equipment Sold "AS IS, WHERE IS": All equipment/property is sold "AS IS, WHERE IS" with no warranty or guarantees, expressed or implied, No operational assessments or testing have been made by Del Peterson on this item, it has been photographed ONLY.



#269 - John Deere Meters (DR6449)

John Deere Meters (DR6449), (8) Kinze Precision soybean metering cups, for John Deere planter. Notes: Item Location: Cokato, MN 55321 Equipment Sold "AS IS, WHERE IS": All equipment/property is sold "AS IS, WHERE IS" with no warranty or guarantees, expressed or implied, No operational assessments or testing have been made by Del Peterson on this item, it has been photographed ONLY.



#270 - John Deere Meters (DR6465)

John Deere Meters (DR6465), (8) Kinze Precision soybean metering cups for John Deere planter. Notes: Item Location: Cokato, MN 55321 Equipment Sold "AS IS, WHERE IS": All equipment/property is sold "AS IS, WHERE IS" with no warranty or guarantees, expressed or implied, No operational assessments or testing have been made by Del Peterson on this item, it has been photographed ONLY.



#271 - Gustafson CBT50 Treater (DR6444)

Gustafson CBT50 Treater (DR6444), complete system w/surge hopper, seed flow metering hopper scale, stainless steel mixing tank, includes stainless steel talc applicator, NO CHEMICAL Tank, SN CCBT03142297. Was all in working order when replaced. Notes: Item Location: Cokato, MN 55321 Equipment Sold "AS IS, WHERE IS": All equipment/property is sold "AS IS, WHERE IS" with no warranty or guarantees, expressed or implied, No operational assessments or testing have been made by Del Peterson on this item, it has been photographed ONLY.



#272 - Carter Day (DR6445)

Carter Day (DR6445), vibrating conveyor, 65" long, 6" wide. Notes: Item Location: Cokato, MN 55321 Equipment Sold "AS IS, WHERE IS": All equipment/property is sold "AS IS, WHERE IS" with no warranty or guarantees, expressed or implied, No operational assessments or testing have been made by Del Peterson on this item, it has been photographed ONLY.



#273 - Re-husker Table (DR6446)

Re-husker Table (DR6446), 4 lane re-husker, w/vibratory feeder, on stand, electric drive motors. Notes: Item Location: Cokato, MN 55321 Equipment Sold "AS IS, WHERE IS": All equipment/property is sold "AS IS, WHERE IS" with no warranty or guarantees, expressed or implied, No operational assessments or testing have been made by Del Peterson on this item, it has been photographed ONLY.



#274 - Incline Conveyor (DR6447)

Incline Conveyor (DR6447), 20' incline belt conveyor, cleated belt w/12" cleat spacing, 1.5" tall cleats, 10hp electric motor. Notes: Item Location: Cokato, MN 55321 Equipment Sold "AS IS, WHERE IS": All equipment/property is sold "AS IS, WHERE IS" with no warranty or guarantees, expressed or implied, No operational assessments or testing have been made by Del Peterson on this item, it has been photographed ONLY.



#275 - Badger Blower (DR6448)

Badger Blower (DR6448), model BN542 silage blower used for blowing husks, 15hp 3 phase electric motor. Notes: Item Location: Cokato, MN 55321 Equipment Sold "AS IS, WHERE IS": All equipment/property is sold "AS IS, WHERE IS" with no warranty or guarantees, expressed or implied, No operational assessments or testing have been made by Del Peterson on this item, it has been photographed ONLY.



#276 - Receiving Leg (DR6450)

Receiving Leg (DR6450), 44' discharge height double trunk leg, 43" extension boot, 7'X10" top platform, 5"X9" cups 6" apart, 5hp 3 phase electric motor. Notes: Item Location: Cokato, MN 55321 Equipment Sold "AS IS, WHERE IS": All equipment/property is sold "AS IS, WHERE IS" with no warranty or guarantees, expressed or implied, No operational assessments or testing have been made by Del Peterson on this item, it has been photographed ONLY.



#277 - Detassler Heads (DR6451)

Detassler Heads (DR6451), (12) hydraulic drive cutter heads. Notes: Item Location: Cokato, MN 55321 Equipment Sold "AS IS, WHERE IS": All equipment/property is sold "AS IS, WHERE IS" with no warranty or guarantees, expressed or implied, No operational assessments or testing have been made by Del Peterson on this item, it has been photographed ONLY.



#278 - Conveyor (DR6452)

Conveyor (DR6452), 55'X16" incline conveyor, 16" wide, cleated belt 1.75" tallX 12" apart, 36' of galvanized cover, 7.5hp 3 phase electric drive motor. Notes: Item Location: Cokato, MN 55321 Equipment Sold "AS IS, WHERE IS": All equipment/property is sold "AS IS, WHERE IS" with no warranty or guarantees, expressed or implied, No operational assessments or testing have been made by Del Peterson on this item, it has been photographed ONLY.



#279 - Custom Seed Sheller (DR6455)

Custom Seed Sheller (DR6455), corn sheller and pre cleaner, 30hp 3 phase motor, surge hopper, pre-cleaner has 3hp 3phase motor, 800 BPH. Notes: Item Location: Cokato, MN 55321 Equipment Sold "AS IS, WHERE IS": All equipment/property is sold "AS IS, WHERE IS" with no warranty or guarantees, expressed or implied, No operational assessments or testing have been made by Del Peterson on this item, it has been photographed ONLY.



#280 - Taylor TE100 (DR6456)

Taylor TE100 (DR6456), model TE100 pneumatic operated bag scale. Notes: Item Location: Cokato, MN 55321 Equipment Sold "AS IS, WHERE IS": All equipment/property is sold "AS IS, WHERE IS" with no warranty or guarantees, expressed or implied, No operational assessments or testing have been made by Del Peterson on this item, it has been photographed ONLY.



#281 - Thiel Bag Scale (DR6457)

Thiel Bag Scale (DR6457), pneumatic operated bag scale, digital control panel. Notes: Item Location: Cokato, MN 55321 Equipment Sold "AS IS, WHERE IS": All equipment/property is sold "AS IS, WHERE IS" with no warranty or guarantees, expressed or implied, No operational assessments or testing have been made by Del Peterson on this item, it has been photographed ONLY.



#282 - Sorting Conveyor (DR6443)

Sorting Conveyor (DR6443), 14' stainless steel sorting conveyor, 30" belt, 1.5hp 3 phase electric motor. Notes: Item Location: Cokato, MN 55321 Equipment Sold "AS IS, WHERE IS": All equipment/property is sold "AS IS, WHERE IS" with no warranty or guarantees, expressed or implied, No operational assessments or testing have been made by Del Peterson on this item, it has been photographed ONLY.



#283 - Sorting Conveyor (DR6466)

Sorting Conveyor (DR6466), 17' stainless steel sorting conveyor, 30" belt, 3/4hp 3 phase electric motor. BELT NEEDS Replaced. Notes: Item Location: Cokato, MN 55321 Equipment Sold "AS IS, WHERE IS": All equipment/property is sold "AS IS, WHERE IS" with no warranty or guarantees, expressed or implied, No operational assessments or testing have been made by Del Peterson on this item, it has been photographed ONLY.



#284 - NECO Dryer (DR6468)

NECO Dryer (DR6468), model D32440, 4 drying tiers, 1 cooling tier, currently set up on natural gas, 4000 BPH rated @ 5points, dimensions are 53' tall & 43' long, NECO control panel, shows 4232 hours. Notes: Dryer is down as it has been replaced. Was all in working order when replaced. Item Location: Remsen, IA 51050 Equipment Sold "AS IS, WHERE IS": All equipment/property is sold "AS IS, WHERE IS" with no warranty or guarantees, expressed or implied, No operational assessments or testing have been made by Del Peterson on this item, it has been photographed ONLY.



#285 - 1990 Great Dane (DR6467)

1990 Great Dane (DR6467), 45' dry van trailer, tandem axle, rear cargo doors, good roof and floor, air ride suspension. Notes: Item Location: Hanska, MN 56041 Equipment Sold "AS IS, WHERE IS": All equipment/property is sold "AS IS, WHERE IS" with no warranty or guarantees, expressed or implied, No operational assessments or testing have been made by Del Peterson on this item, it has been photographed ONLY.



#286 - John Deere 7100 6 Row Planter (JK170)

John Deere 7100 6 Row Planter (JK170), with Milo plates, planter is in super condition and no markers, #4. Notes: Item Location: Maurice, IA 51036 Equipment Sold "AS IS, WHERE IS": All equipment/property is sold "AS IS, WHERE IS" with no warranty or guarantees, expressed or implied, No operational assessments or testing have been made by Del Peterson on this item, it has been photographed ONLY.



#287 - Long MFG Super 1199A 3 Point Backhoe (EG271)

Long MFG Super 1199A 3 Point Backhoe (EG271), PTO driven pump, rebuilt all boom cylinders after I bought just to dry up leaks, rest of the cylinders are in pretty good shape, boom looks rough, it was that way when purchased and I have dug hundreds of tile holes with it and have had no problems, has original PTO pump with unknown working condition, good little backhoe, reason for selling was upgrade. Notes: Item Location: Secor, IL 61771 Equipment Sold "AS IS, WHERE IS": All equipment/property is sold "AS IS, WHERE IS" with no warranty or guarantees, expressed or implied, No operational assessments or testing have been made by Del Peterson on this item, it has been photographed ONLY.



#288 - McFarlane Harrow (EG269)

McFarlane Harrow (EG269), 30 foot, new teeth 3 years ago, most chains have been replaced, manual fold, worn but very serviceable, reason for selling is went to 32 foot hyd fold. Notes: Item Location: Secor, IL 61771 Equipment Sold "AS IS, WHERE IS": All equipment/property is sold "AS IS, WHERE IS" with no warranty or guarantees, expressed or implied, No operational assessments or testing have been made by Del Peterson on this item, it has been photographed ONLY.



#289 - 1984 John Deere 8450 4 WD Tractor (EG268)

1984 John Deere 8450 4 WD Tractor (EG268), three point hitch, 20.8-38 clamp on duals, 3 remotes, newer center U-joints, power quad transmission, oil changed every 100 hours since owned, newer battery, owned by 500 acre grain farm, good pulling, nice running tractor, 6743 hours. Notes: Item Location: Secor, IL 61771 Equipment Sold "AS IS, WHERE IS": All equipment/property is sold "AS IS, WHERE IS" with no warranty or guarantees, expressed or implied, No operational assessments or testing have been made by Del Peterson on this item, it has been photographed ONLY.



#290 - 2000 Chevrolet C7500 (MH193)

2000 Chevrolet C7500 (MH193), 3126 CAT Diesel engine, 250HP, 9-speed transmission, 50,000 GVW, double frame, 25' 6" aluminum bed, 96" wide, tires are 11R22.5H, winch tie downs, air lift, tag axle, no rust, very clean, shows 192885 miles. Notes: Item Location: Rochester, MN 55906 Equipment Sold "AS IS, WHERE IS": All equipment/property is sold "AS IS, WHERE IS" with no warranty or guarantees, expressed or implied, No operational assessments or testing have been made by Del Peterson on this item, it has been photographed ONLY.



#291 - MC675 Continuous Grain Dryer (PD404)

MC675 Continuous Grain Dryer (PD404), PTO 12 Volt, Ignitors on 115, Capacity 500-550, Variable Speeds, Switch on Back and Front for Augers 12 Volt, PTO Runs Fan Propane Settings, 2 Moisture Sensors on Each Side, Not Used in 4 Years. Notes: Item Location: Valparaiso, NE 68065 Equipment Sold "AS IS, WHERE IS": All equipment/property is sold "AS IS, WHERE IS" with no warranty or guarantees, expressed or implied, No operational assessments or testing have been made by Del Peterson on this item, it has been photographed ONLY.



#292 - Hahn Hi Boy H-306 (EG262)

Hahn Hi Boy H-306 (EG262), Wisconsin 4 cylinder gas engine, 200 gallon tank, booms are straight, worked great when parked, would be great for someone to restore or use on a small farm. Notes: Item Location: Gilman, IL 60938 Equipment Sold "AS IS, WHERE IS": All equipment/property is sold "AS IS, WHERE IS" with no warranty or guarantees, expressed or implied, No operational assessments or testing have been made by Del Peterson on this item, it has been photographed ONLY.



#293 - Westfield Auger WR 100-31 (EG260)

Westfield Auger WR 100-31 (EG260), Newer auger flighting, 10" 31' truck load out auger, 10 horse power electric engine, decent tires, few welded plates on tube, works good just bought new auger. Notes: Item Location: Gilman, IL 60938 Equipment Sold "AS IS, WHERE IS": All equipment/property is sold "AS IS, WHERE IS" with no warranty or guarantees, expressed or implied, No operational assessments or testing have been made by Del Peterson on this item, it has been photographed ONLY.



#294 - 1996 Jet Spread Axle Stepdeck Trailer (EG261)

1996 Jet Spread Axle Stepdeck Trailer (EG261), 48 foot long X 102 wide, aluminum floor with steel frame, like new virgin rubber tires, 255/70R22.5 tires, dual side boxes, well maintained, we have owned trailer for over 10 years but haven't used it much in last couple years, was used mostly for hauling hay and straw, the few wood boards are original with trailer, also has aluminum rims, pulls straight, really nice trailer just bought newer. Notes: Item Location: Gilman, IL 60938 Equipment Sold "AS IS, WHERE IS": All equipment/property is sold "AS IS, WHERE IS" with no warranty or guarantees, expressed or implied, No operational assessments or testing have been made by Del Peterson on this item, it has been photographed ONLY.



#295 - Metal Siding (DR-6458)

Metal Siding (DR-6458), NEW UNUSED (70) sheets, American made, White color, 10' long X 36" overlap coverage, Premium Pro Rib Profile style, 29 gauge. ALWAYS stored inside. Meets all USA building material engineering codes for Tested Tolerances for wind & snow. USA stamped seal of approval documentation on all products. Notes: Loadout IS available with flexible appointments. Can also offer hardware, trim, corners at wholesale prices. Item Location: Monroe, NE 68647 Equipment Sold "AS IS, WHERE IS": All equipment/property is sold "AS IS, WHERE IS" with no warranty or guarantees, expressed or implied, No operational assessments or testing have been made by Del Peterson on this item, it has been photographed ONLY.



#296 - Metal Siding (DR-6459)

Metal Siding (DR-6459), NEW UNUSED (70) sheets, American made, White color, 10' long X 36" overlap coverage, Premium Pro Rib Profile style, 29 gauge. ALWAYS stored inside. Meets all USA building material engineering codes for Tested Tolerances for wind & snow. USA stamped seal of approval documentation on all products. Notes: Loadout IS available with flexible appointments. Can also offer hardware, trim, corners at wholesale prices. Item Location: Monroe, NE 68647 Equipment Sold "AS IS, WHERE IS": All equipment/property is sold "AS IS, WHERE IS" with no warranty or guarantees, expressed or implied, No operational assessments or testing have been made by Del Peterson on this item, it has been photographed ONLY.



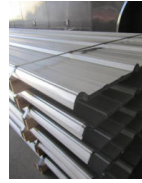
#297 - Metal Siding (DR-64560)

Metal Siding (DR-64560), NEW UNUSED (70) sheets, American made, White color, 10' long X 36" overlap coverage, Premium Pro Rib Profile style, 29 gauge. ALWAYS stored inside. Meets all USA building material engineering codes for Tested Tolerances for wind & snow. USA stamped seal of approval documentation on all products. Notes: Loadout IS available with flexible appointments. Can also offer hardware, trim, corners at wholesale prices. Item Location: Monroe, NE 68647 Equipment Sold "AS IS, WHERE IS": All equipment/property is sold "AS IS, WHERE IS" with no warranty or guarantees, expressed or implied, No operational assessments or testing have been made by Del Peterson on this item, it has been photographed ONLY.



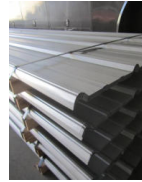
#298 - Metal Siding (DR-6461)

Metal Siding (DR-6461), NEW UNUSED (30) sheets, American made, Galvalume color, 16'-4" long X 36" overlap coverage, Premium Pro Rib Profile style, 29 gauge. ALWAYS stored inside. Meets all USA building material engineering codes for Tested Tolerances for wind & snow. USA stamped seal of approval documentation on all products. Notes: Loadout IS available with flexible appointments. Can also offer hardware, trim, corners at wholesale prices. Item Location: Monroe, NE 68647 Equipment Sold "AS IS, WHERE IS": All equipment/property is sold "AS IS, WHERE IS" with no warranty or guarantees, expressed or implied, No operational assessments or testing have been made by Del Peterson on this item, it has been photographed ONLY.



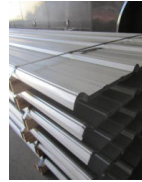
#299 - Metal Siding (DR-6462)

Metal Siding (DR-6462), NEW UNUSED (30) sheets, American made, Galvalume color, 16'-4" long X 36" overlap coverage, Premium Pro Rib Profile style, 29 gauge. ALWAYS stored inside. Meets all USA building material engineering codes for Tested Tolerances for wind & snow. USA stamped seal of approval documentation on all products. Notes: Loadout IS available with flexible appointments. Can also offer hardware, trim, corners at wholesale prices. Item Location: Monroe, NE 68647 Equipment Sold "AS IS, WHERE IS": All equipment/property is sold "AS IS, WHERE IS" with no warranty or guarantees, expressed or implied, No operational assessments or testing have been made by Del Peterson on this item, it has been photographed ONLY.



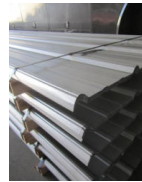
#300 - Metal Siding (DR-6463)

Metal Siding (DR-6463), NEW UNUSED (30) sheets, American made, Galvalume color, 16'-4" long X 36" overlap coverage, Premium Pro Rib Profile style, 29 gauge. ALWAYS stored inside. Meets all USA building material engineering codes for Tested Tolerances for wind & snow. USA stamped seal of approval documentation on all products. Notes: Loadout IS available with flexible appointments. Can also offer hardware, trim, corners at wholesale prices. Item Location: Monroe, NE 68647 Equipment Sold "AS IS, WHERE IS": All equipment/property is sold "AS IS, WHERE IS" with no warranty or guarantees, expressed or implied, No operational assessments or testing have been made by Del Peterson on this item, it has been photographed ONLY.



#301 - Metal Siding (DR-6464)

Metal Siding (DR-6464), NEW UNUSED (30) sheets, American made, Galvalume color, 16'-4" long X 36" overlap coverage, Premium Pro Rib Profile style, 29 gauge. ALWAYS stored inside. Meets all USA building material engineering codes for Tested Tolerances for wind & snow. USA stamped seal of approval documentation on all products. Notes: Loadout IS available with flexible appointments. Can also offer hardware, trim, corners at wholesale prices. Item Location: Monroe, NE 68647 Equipment Sold "AS IS, WHERE IS": All equipment/property is sold "AS IS, WHERE IS" with no warranty or guarantees, expressed or implied, No operational assessments or testing have been made by Del Peterson on this item, it has been photographed ONLY.



#302 - Crushed Oyster Shell Flour (CG283)

Crushed Oyster Shell Flour (CG283), great for use in your garden or if you have a farm spread it on the field, use with your tomato planting to help eliminate blossom end rot (lack of calcium), average weight is 2000 pounds per tote give or take 500 lbs. Notes: Item Location: Newport, MN 55055 Equipment Sold "AS IS, WHERE IS": All equipment/property is sold "AS IS, WHERE IS" with no warranty or guarantees, expressed or implied, No operational assessments or testing have been made by Del Peterson on this item, it has been photographed ONLY.



#303 - Crushed Oyster Shell Flour (CG284)

Crushed Oyster Shell Flour (CG284), great for use in your garden or if you have a farm spread it on the field, use with your tomato planting to help eliminate blossom end rot (lack of calcium), average weight is 2000 pounds per tote give or take 500 lbs. Notes: Item Location: Newport, MN 55055 Equipment Sold "AS IS, WHERE IS": All equipment/property is sold "AS IS, WHERE IS" with no warranty or guarantees, expressed or implied, No operational assessments or testing have been made by Del Peterson on this item, it has been photographed ONLY.



#304 - Crushed Oyster Shell Flour (CG285)

Crushed Oyster Shell Flour (CG285), great for use in your garden or if you have a farm spread it on the field, use with your tomato planting to help eliminate blossom end rot (lack of calcium), average weight is 2000 pounds per tote give or take 500 lbs. Notes: Item Location: Newport, MN 55055 Equipment Sold "AS IS, WHERE IS": All equipment/property is sold "AS IS, WHERE IS" with no warranty or guarantees, expressed or implied, No operational assessments or testing have been made by Del Peterson on this item, it has been photographed ONLY.



#305 - Crushed Oyster Shell Flour (CG286)

Crushed Oyster Shell Flour (CG286), great for use in your garden or if you have a farm spread it on the field, use with your tomato planting to help eliminate blossom end rot (lack of calcium), average weight is 2000 pounds per tote give or take 500 lbs. Notes: Item Location: Newport, MN 55055 Equipment Sold "AS IS, WHERE IS": All equipment/property is sold "AS IS, WHERE IS" with no warranty or guarantees, expressed or implied, No operational assessments or testing have been made by Del Peterson on this item, it has been photographed ONLY.



#306 - Crushed Oyster Shell Flour (CG287)

Crushed Oyster Shell Flour (CG287), great for use in your garden or if you have a farm spread it on the field, use with your tomato planting to help eliminate blossom end rot (lack of calcium), average weight is 2000 pounds per tote give or take 500 lbs. Notes: Item Location: Newport, MN 55055 Equipment Sold "AS IS, WHERE IS": All equipment/property is sold "AS IS, WHERE IS" with no warranty or guarantees, expressed or implied, No operational assessments or testing have been made by Del Peterson on this item, it has been photographed ONLY.



#307 - Crushed Oyster Shell Flour (CG288)

Crushed Oyster Shell Flour (CG288), great for use in your garden or if you have a farm spread it on the field, use with your tomato planting to help eliminate blossom end rot (lack of calcium), average weight is 2000 pounds per tote give or take 500 lbs. Notes: Item Location: Newport, MN 55055 Equipment Sold "AS IS, WHERE IS": All equipment/property is sold "AS IS, WHERE IS" with no warranty or guarantees, expressed or implied, No operational assessments or testing have been made by Del Peterson on this item, it has been photographed ONLY.



#308 - Crushed Oyster Shell Flour (CG289)

Crushed Oyster Shell Flour (CG289), great for use in your garden or if you have a farm spread it on the field, use with your tomato planting to help eliminate blossom end rot (lack of calcium), average weight is 2000 pounds per tote give or take 500 lbs. Notes: Item Location: Newport, MN 55055 Equipment Sold "AS IS, WHERE IS": All equipment/property is sold "AS IS, WHERE IS" with no warranty or guarantees, expressed or implied, No operational assessments or testing have been made by Del Peterson on this item, it has been photographed ONLY.



#309 - Crushed Oyster Shell Flour (CG290)

Crushed Oyster Shell Flour (CG290), great for use in your garden or if you have a farm spread it on the field, use with your tomato planting to help eliminate blossom end rot (lack of calcium), average weight is 2000 pounds per tote give or take 500 lbs. Notes: Item Location: Newport, MN 55055 Equipment Sold "AS IS, WHERE IS": All equipment/property is sold "AS IS, WHERE IS" with no warranty or guarantees, expressed or implied, No operational assessments or testing have been made by Del Peterson on this item, it has been photographed ONLY.



#310 - Crushed Oyster Shell Flour (CG291)

Crushed Oyster Shell Flour (CG291), great for use in your garden or if you have a farm spread it on the field, use with your tomato planting to help eliminate blossom end rot (lack of calcium), average weight is 2000 pounds per tote give or take 500 lbs. Notes: Item Location: Newport, MN 55055 Equipment Sold "AS IS, WHERE IS": All equipment/property is sold "AS IS, WHERE IS" with no warranty or guarantees, expressed or implied, No operational assessments or testing have been made by Del Peterson on this item, it has been photographed ONLY.



#311 - Crushed Oyster Shell Flour (CG292)

Crushed Oyster Shell Flour (CG292), great for use in your garden or if you have a farm spread it on the field, use with your tomato planting to help eliminate blossom end rot (lack of calcium), average weight is 2000 pounds per tote give or take 500 lbs. Notes: Item Location: Newport, MN 55055 Equipment Sold "AS IS, WHERE IS": All equipment/property is sold "AS IS, WHERE IS" with no warranty or guarantees, expressed or implied, No operational assessments or testing have been made by Del Peterson on this item, it has been photographed ONLY.



#312 - Crushed Oyster Shell Flour (CG293)

Crushed Oyster Shell Flour (CG293), great for use in your garden or if you have a farm spread it on the field, use with your tomato planting to help eliminate blossom end rot (lack of calcium), average weight is 2000 pounds per tote give or take 500 lbs. Notes: Item Location: Newport, MN 55055 Equipment Sold "AS IS, WHERE IS": All equipment/property is sold "AS IS, WHERE IS" with no warranty or guarantees, expressed or implied, No operational assessments or testing have been made by Del Peterson on this item, it has been photographed ONLY.



#313 - Crushed Oyster Shell Flour (CG294)

Crushed Oyster Shell Flour (CG294), great for use in your garden or if you have a farm spread it on the field, use with your tomato planting to help eliminate blossom end rot (lack of calcium), average weight is 2000 pounds per tote give or take 500 lbs. Notes: Item Location: Newport, MN 55055 Equipment Sold "AS IS, WHERE IS": All equipment/property is sold "AS IS, WHERE IS" with no warranty or guarantees, expressed or implied, No operational assessments or testing have been made by Del Peterson on this item, it has been photographed ONLY.



#314 - Crushed Oyster Shell Flour (CG295)

Crushed Oyster Shell Flour (CG295), great for use in your garden or if you have a farm spread it on the field, use with your tomato planting to help eliminate blossom end rot (lack of calcium), average weight is 2000 pounds per tote give or take 500 lbs. Notes: Item Location: Newport, MN 55055 Equipment Sold "AS IS, WHERE IS": All equipment/property is sold "AS IS, WHERE IS" with no warranty or guarantees, expressed or implied, No operational assessments or testing have been made by Del Peterson on this item, it has been photographed ONLY.



#315 - Crushed Oyster Shell Flour (CG296)

Crushed Oyster Shell Flour (CG296), great for use in your garden or if you have a farm spread it on the field, use with your tomato planting to help eliminate blossom end rot (lack of calcium), average weight is 2000 pounds per tote give or take 500 lbs. Notes: Item Location: Newport, MN 55055 Equipment Sold "AS IS, WHERE IS": All equipment/property is sold "AS IS, WHERE IS" with no warranty or guarantees, expressed or implied, No operational assessments or testing have been made by Del Peterson on this item, it has been photographed ONLY.



#316 - Crushed Oyster Shell Flour (CG297)

Crushed Oyster Shell Flour (CG297), great for use in your garden or if you have a farm spread it on the field, use with your tomato planting to help eliminate blossom end rot (lack of calcium), average weight is 2000 pounds per tote give or take 500 lbs. Notes: Item Location: Newport, MN 55055 Equipment Sold "AS IS, WHERE IS": All equipment/property is sold "AS IS, WHERE IS" with no warranty or guarantees, expressed or implied, No operational assessments or testing have been made by Del Peterson on this item, it has been photographed ONLY.



#317 - Crushed Oyster Shell Flour (CG298)

Crushed Oyster Shell Flour (CG298), great for use in your garden or if you have a farm spread it on the field, use with your tomato planting to help eliminate blossom end rot (lack of calcium), average weight is 2000 pounds per tote give or take 500 lbs. Notes: Item Location: Newport, MN 55055 Equipment Sold "AS IS, WHERE IS": All equipment/property is sold "AS IS, WHERE IS" with no warranty or guarantees, expressed or implied, No operational assessments or testing have been made by Del Peterson on this item, it has been photographed ONLY.



#318 - Crushed Oyster Shell Flour (CG299)

Crushed Oyster Shell Flour (CG299), great for use in your garden or if you have a farm spread it on the field, use with your tomato planting to help eliminate blossom end rot (lack of calcium), average weight is 2000 pounds per tote give or take 500 lbs. Notes: Item Location: Newport, MN 55055 Equipment Sold "AS IS, WHERE IS": All equipment/property is sold "AS IS, WHERE IS" with no warranty or guarantees, expressed or implied, No operational assessments or testing have been made by Del Peterson on this item, it has been photographed ONLY.



#319 - Crushed Oyster Shell Flour (CG300)

Crushed Oyster Shell Flour (CG300), great for use in your garden or if you have a farm spread it on the field, use with your tomato planting to help eliminate blossom end rot (lack of calcium), average weight is 2000 pounds per tote give or take 500 lbs. Notes: Item Location: Newport, MN 55055 Equipment Sold "AS IS, WHERE IS": All equipment/property is sold "AS IS, WHERE IS" with no warranty or guarantees, expressed or implied, No operational assessments or testing have been made by Del Peterson on this item, it has been photographed ONLY.



#320 - Crushed Oyster Shell Flour (CG301)

Crushed Oyster Shell Flour (CG301), great for use in your garden or if you have a farm spread it on the field, use with your tomato planting to help eliminate blossom end rot (lack of calcium), average weight is 2000 pounds per tote give or take 500 lbs. Notes: Item Location: Newport, MN 55055 Equipment Sold "AS IS, WHERE IS": All equipment/property is sold "AS IS, WHERE IS" with no warranty or guarantees, expressed or implied, No operational assessments or testing have been made by Del Peterson on this item, it has been photographed ONLY.



#321 - Crushed Oyster Shell Flour (CG302)

Crushed Oyster Shell Flour (CG302), great for use in your garden or if you have a farm spread it on the field, use with your tomato planting to help eliminate blossom end rot (lack of calcium), average weight is 2000 pounds per tote give or take 500 lbs. Notes: Item Location: Newport, MN 55055 Equipment Sold "AS IS, WHERE IS": All equipment/property is sold "AS IS, WHERE IS" with no warranty or guarantees, expressed or implied, No operational assessments or testing have been made by Del Peterson on this item, it has been photographed ONLY.



#322 - Crushed Oyster Shell Flour (CG303)

Crushed Oyster Shell Flour (CG303), great for use in your garden or if you have a farm spread it on the field, use with your tomato planting to help eliminate blossom end rot (lack of calcium), average weight is 2000 pounds per tote give or take 500 lbs. Notes: Item Location: Newport, MN 55055 Equipment Sold "AS IS, WHERE IS": All equipment/property is sold "AS IS, WHERE IS" with no warranty or guarantees, expressed or implied, No operational assessments or testing have been made by Del Peterson on this item, it has been photographed ONLY.



#323 - Crushed Oyster Shell Flour (CG304)

Crushed Oyster Shell Flour (CG304), great for use in your garden or if you have a farm spread it on the field, use with your tomato planting to help eliminate blossom end rot (lack of calcium), average weight is 2000 pounds per tote give or take 500 lbs. Notes: Item Location: Newport, MN 55055 Equipment Sold "AS IS, WHERE IS": All equipment/property is sold "AS IS, WHERE IS" with no warranty or guarantees, expressed or implied, No operational assessments or testing have been made by Del Peterson on this item, it has been photographed ONLY.



#324 - Crushed Oyster Shell Flour (CG305)

Crushed Oyster Shell Flour (CG305), great for use in your garden or if you have a farm spread it on the field, use with your tomato planting to help eliminate blossom end rot (lack of calcium), average weight is 2000 pounds per tote give or take 500 lbs. Notes: Item Location: Newport, MN 55055 Equipment Sold "AS IS, WHERE IS": All equipment/property is sold "AS IS, WHERE IS" with no warranty or guarantees, expressed or implied, No operational assessments or testing have been made by Del Peterson on this item, it has been photographed ONLY.



#325 - Crushed Oyster Shell Flour (CG306)

Crushed Oyster Shell Flour (CG306), great for use in your garden or if you have a farm spread it on the field, use with your tomato planting to help eliminate blossom end rot (lack of calcium), average weight is 2000 pounds per tote give or take 500 lbs. Notes: Item Location: Newport, MN 55055 Equipment Sold "AS IS, WHERE IS": All equipment/property is sold "AS IS, WHERE IS" with no warranty or guarantees, expressed or implied, No operational assessments or testing have been made by Del Peterson on this item, it has been photographed ONLY.



#326 - Crushed Oyster Shell Flour (CG307)

Crushed Oyster Shell Flour (CG307), great for use in your garden or if you have a farm spread it on the field, use with your tomato planting to help eliminate blossom end rot (lack of calcium), average weight is 2000 pounds per tote give or take 500 lbs. Notes: Item Location: Newport, MN 55055 Equipment Sold "AS IS, WHERE IS": All equipment/property is sold "AS IS, WHERE IS" with no warranty or guarantees, expressed or implied, No operational assessments or testing have been made by Del Peterson on this item, it has been photographed ONLY.

