

## Auction catalog

<b>Title</b>	Online Auction December 19, 2017 10AM Central
<b>Description</b>	The following line of Fertilizer, Farm Implement, Truck, Trailer & Construction Equipment will be sold online with the bidding ending on December 19, 2017. Location of the equipment is given. Bidding within the last minute before the closing of a lot will extend the bidding time by an additional minute. Be prepared to bid accordingly. For more information, contact Del Peterson & Associates: 419 West Judy Drive Fremont NE, 68025 Phone: 800-492-9090 or 402-721-4388 Fax: 402-721-4583 E-mail: auction@delpeterson.com
<b>Date</b>	Tue, Dec 19, 2017
<b>Starts at</b>	10:00 AM
<b>Address</b>	PO Box 654, Fremont, NE 68026 USA
<b>Categories</b>	

### #1 - Auger (DR7614)

Auger (DR7614), 19' hydraulic drive rear auger for tender box. Notes: Item Location: Brodhead, WI 53520 Equipment Sold "AS IS, WHERE IS": All equipment/property is sold "AS IS, WHERE IS" with no warranty or guarantees, expressed or implied, No operational assessments have been made by DPA Auctions on this item, it has been photographed ONLY.



### #2 - Poly Tanks (DR7613)

Poly Tanks (DR7613), (2) 925 gallon poly liquid tanks. Notes: Item Location: Brodhead, WI 53520 Equipment Sold "AS IS, WHERE IS": All equipment/property is sold "AS IS, WHERE IS" with no warranty or guarantees, expressed or implied, No operational assessments have been made by DPA Auctions on this item, it has been photographed ONLY.



### #3 - Running Gear (DR7603)

Running Gear (DR7603), 5th wheel style steerable running gear, 12.5-15 tires. Notes: Item Location: Brodhead, WI 53520 Equipment Sold "AS IS, WHERE IS": All equipment/property is sold "AS IS, WHERE IS" with no warranty or guarantees, expressed or implied, No operational assessments have been made by DPA Auctions on this item, it has been photographed ONLY.



### #4 - Running Gear (DR7604)

Running Gear (DR7604), 5th wheel style steerable running gear, 12.5-15 tires. Notes: Item Location: Brodhead, WI 53520 Equipment Sold "AS IS, WHERE IS": All equipment/property is sold "AS IS, WHERE IS" with no warranty or guarantees, expressed or implied, No operational assessments have been made by DPA Auctions on this item, it has been photographed ONLY.



### #5 - Running Gear (DR7605)

Running Gear (DR7605), 5th wheel style steerable running gear, 12.5-15 tires. Notes: Item Location: Brodhead, WI 53520 Equipment Sold "AS IS, WHERE IS": All equipment/property is sold "AS IS, WHERE IS" with no warranty or guarantees, expressed or implied, No operational assessments have been made by DPA Auctions on this item, it has been photographed ONLY.



### #6 - Running Gear (DR7606)

Running Gear (DR7606), 5th wheel style steerable running gear, 11L-15 tires. Notes: Item Location: Brodhead, WI 53520 Equipment Sold "AS IS, WHERE IS": All equipment/property is sold "AS IS, WHERE IS" with no warranty or guarantees, expressed or implied, No operational assessments have been made by DPA Auctions on this item, it has been photographed ONLY.



### #7 - Running Gear (DR7607)

Running Gear (DR7607), 5th wheel style steerable running gear, 11L-15 tires, for narrow rows. Notes: Item Location: Brodhead, WI 53520 Equipment Sold "AS IS, WHERE IS": All equipment/property is sold "AS IS, WHERE IS" with no warranty or guarantees, expressed or implied, No operational assessments have been made by DPA Auctions on this item, it has been photographed ONLY.



---

### #8 - Running Gear (DR7608)

Running Gear (DR7608), 5th wheel style steerable running gear, 11L-15 tires. Notes: Item Location: Brodhead, WI 53520 Equipment Sold "AS IS, WHERE IS": All equipment/property is sold "AS IS, WHERE IS" with no warranty or guarantees, expressed or implied, No operational assessments have been made by DPA Auctions on this item, it has been photographed ONLY.



---

### #9 - Running Gear (DR7609)

Running Gear (DR7609), 5th wheel style steerable running gear, 12.5-15 tires. Notes: Item Location: Brodhead, WI 53520 Equipment Sold "AS IS, WHERE IS": All equipment/property is sold "AS IS, WHERE IS" with no warranty or guarantees, expressed or implied, No operational assessments have been made by DPA Auctions on this item, it has been photographed ONLY.



---

### #10 - Running Gear (DR7610)

Running Gear (DR7610), 5th wheel style steerable running gear, 14L-16.1 tires. Notes: Item Location: Brodhead, WI 53520 Equipment Sold "AS IS, WHERE IS": All equipment/property is sold "AS IS, WHERE IS" with no warranty or guarantees, expressed or implied, No operational assessments have been made by DPA Auctions on this item, it has been photographed ONLY.



---

### #11 - Running Gear (DR7611)

Running Gear (DR7611), 5th wheel style steerable running gear, 12.5-15 tires. Notes: Item Location: Brodhead, WI 53520 Equipment Sold "AS IS, WHERE IS": All equipment/property is sold "AS IS, WHERE IS" with no warranty or guarantees, expressed or implied, No operational assessments have been made by DPA Auctions on this item, it has been photographed ONLY.



---

### #12 - Westfield Auger (DR7560)

Westfield Auger (DR7560), model 130-41 portable auger, 20hp electric motor drive. Notes: Item Location: Waupun, WI 53963 Equipment Sold "AS IS, WHERE IS": All equipment/property is sold "AS IS, WHERE IS" with no warranty or guarantees, expressed or implied, No operational assessments have been made by DPA Auctions on this item, it has been photographed ONLY.



---

### #13 - Doyle Conveyor (DR7612)

Doyle Conveyor (DR7612), approximately 35' portable belt conveyor, top hydraulic drive, 24" cleated belt. Notes: Item Location: Brodhead, WI 53520 Equipment Sold "AS IS, WHERE IS": All equipment/property is sold "AS IS, WHERE IS" with no warranty or guarantees, expressed or implied, No operational assessments have been made by DPA Auctions on this item, it has been photographed ONLY.



---

### #14 - Running Gear (DR7571)

Running Gear (DR7571), 5th wheel style steerable running gear, 11L-15 tires. Notes: Item Location: Palmyra, WI 53156 Equipment Sold "AS IS, WHERE IS": All equipment/property is sold "AS IS, WHERE IS" with no warranty or guarantees, expressed or implied, No operational assessments have been made by DPA Auctions on this item, it has been photographed ONLY.



---

### #15 - Running Gear (DR7572)

Running Gear (DR7572), 5th wheel style steerable running gear, adjustable axles, 12.5L-15 tires. Notes: Item Location: Palmyra, WI 53156 Equipment Sold "AS IS, WHERE IS": All equipment/property is sold "AS IS, WHERE IS" with no warranty or guarantees, expressed or implied, No operational assessments have been made by DPA Auctions on this item, it has been photographed ONLY.



---

### #16 - Running Gear (DR7573)

Running Gear (DR7573), 5th wheel style steerable running gear, adjustable axles, 11L-15 tires. Notes: Item Location: Palmyra, WI 53156 Equipment Sold "AS IS, WHERE IS": All equipment/property is sold "AS IS, WHERE IS" with no warranty or guarantees, expressed or implied, No operational assessments have been made by DPA Auctions on this item, it has been photographed ONLY.



### #17 - 2001 RoGator 854 Sprayer (PZ7855)

2001 RoGator 854 Sprayer (PZ7855), Cummins diesel engine, hydrostatic transmission, air conditioning, heat, Am/Fm radio, 800 gallon stainless steel liquid system, 90' boom, 10" spacing (drops NOT included), foam marker, stainless steel foam marker tank, Firestone Radial 900 380/90R46 tires, Raven SCS661 monitor, shows 2762 hours. Notes: Drops not included. Item Location: West Point, IN 47992 Equipment Sold "AS IS, WHERE IS": All equipment/property is sold "AS IS, WHERE IS" with no warranty or guarantees, expressed or implied, No operational assessments have been made by DPA Auctions on this item, it has been photographed ONLY.



### #18 - 1994 Kenworth T600 Truck (PZ7853)

1994 Kenworth T600 Truck (PZ7853), Cat 3176 diesel engine, Super 10 speed transmission, heat, Am/Fm cassette radio, tandem axle, full screw, air ride suspension, 285/75R24.5 tires, shows 853,060 miles. Notes: Please contact seller for condition of truck. Item Location: Lafayette, IN 47905 Equipment Sold "AS IS, WHERE IS": All equipment/property is sold "AS IS, WHERE IS" with no warranty or guarantees, expressed or implied, No operational assessments have been made by DPA Auctions on this item, it has been photographed ONLY.



### #19 - 1990 Volvo Truck (PZ7854)

1990 Volvo Truck (PZ7854), Cummins diesel engine, 9 speed transmission, air conditioning, heat, Am/Fm radio, tandem axle, full screw, 11R22.5 tires. Notes: Please contact seller for condition of truck. Item Location: Lafayette, IN 47905 Equipment Sold "AS IS, WHERE IS": All equipment/property is sold "AS IS, WHERE IS" with no warranty or guarantees, expressed or implied, No operational assessments have been made by DPA Auctions on this item, it has been photographed ONLY.



### #20 - 2011 John Deere 2510H Tool Bar (PZ7863)

2011 John Deere 2510H Tool Bar (PZ7863), 2011 John Deere 2510H 15 knife tool bar, Raven double super coolers, 20 - weights, hydraulic wings, Firestone IF320/70R15 flotation tires, rear hitch. Notes: Item Location: Mellott, IN 47958 Equipment Sold "AS IS, WHERE IS": All equipment/property is sold "AS IS, WHERE IS" with no warranty or guarantees, expressed or implied, No operational assessments have been made by DPA Auctions on this item, it has been photographed ONLY.



### #21 - Doyle Dry Conveyor (PZ7859)

Doyle Dry Conveyor (PZ7859), Doyle stainless steel dry fertilizer conveyor, Leeson 10 hp electric motor, 9.5L-15 flotation tires. Notes: Item Location: Mellott, IN 47958 Equipment Sold "AS IS, WHERE IS": All equipment/property is sold "AS IS, WHERE IS" with no warranty or guarantees, expressed or implied, No operational assessments have been made by DPA Auctions on this item, it has been photographed ONLY.



### #22 - Doyle Dry Conveyor (PZ7860)

Doyle Dry Conveyor (PZ7860), Doyle stainless steel dry fertilizer conveyor, electric motor, ST205/75R15 tires. Notes: Item Location: Mellott, IN 47958 Equipment Sold "AS IS, WHERE IS": All equipment/property is sold "AS IS, WHERE IS" with no warranty or guarantees, expressed or implied, No operational assessments have been made by DPA Auctions on this item, it has been photographed ONLY.



### #23 - 2006 CaseIH FLX3010 Dry Floater (PZ7856)

2006 CaseIH FLX3010 Dry Floater (PZ7856), diesel engine, Allison automatic transmission, air conditioning, heat, Am/Fm CD stereo, New Leader L3020 G4-14 stainless steel dry spreader box (S/N 122989), twin spinner, all hydraulic, Alliance 1000/50R25 front tire, Good Year 1000/50R25 rear tires, Raven monitor, lightbar, shows 4612 hours. Notes: Item Location: Mellott, IN 47958 Equipment Sold "AS IS, WHERE IS": All equipment/property is sold "AS IS, WHERE IS" with no warranty or guarantees, expressed or implied, No operational assessments have been made by DPA Auctions on this item, it has been photographed ONLY.



### #24 - 2010 John Deere 1910 Commodity Cart (PZ7862)

2010 John Deere 1910 Commodity Cart (PZ7862), 2010 John Deere 1910 commodity cart, 2 compartment (120 - 150), Good Year 480/80R42 dual tires. Notes: Item Location: Mellott, IN 47958 Equipment Sold "AS IS, WHERE IS": All equipment/property is sold "AS IS, WHERE IS" with no warranty or guarantees, expressed or implied, No operational assessments have been made by DPA Auctions on this item, it has been photographed ONLY.



### #25 - 2001 Sterling Truck (PZ7861)

2001 Sterling Truck (PZ7861), Cat diesel engine, automatic transmission, air conditioning, heat, Am/Fm radio, cruise control, tandem axle, full screw, spring suspension, 315/80R22.5 front tires, 11R22.5 rear tires, shows 175,587 miles. Notes: Item Location: Mellott, IN 47958 Equipment Sold "AS IS, WHERE IS": All equipment/property is sold "AS IS, WHERE IS" with no warranty or guarantees, expressed or implied, No operational assessments have been made by DPA Auctions on this item, it has been photographed ONLY.



---

### #26 - Convey-All Seed Tender (PZ7867)

Convey-All Seed Tender (PZ7867), Convey-All BTS290 seed tender, Honda electric start gas engine, front & rear hopper, rotating conveyor, roll over tarp, Weigh-Tronix model 615XL digital scale. Notes: Trailer is NOT included. Item Location: Whitesville, IN 47968 Equipment Sold "AS IS, WHERE IS": All equipment/property is sold "AS IS, WHERE IS" with no warranty or guarantees, expressed or implied, No operational assessments have been made by DPA Auctions on this item, it has been photographed ONLY.



---

### #27 - 2002 Chevrolet 2500HD Pickup (PZ7865)

2002 Chevrolet 2500HD Pickup (PZ7865), 4x4, gas engine, automatic transmission, air conditioning, heat, Am/Fm CD stereo, cruise control, power windows & locks, LT265/75R16 tires, shows 204,229 miles. Notes: Item Location: Whitesville, IN 47968 Equipment Sold "AS IS, WHERE IS": All equipment/property is sold "AS IS, WHERE IS" with no warranty or guarantees, expressed or implied, No operational assessments have been made by DPA Auctions on this item, it has been photographed ONLY.



---

### #28 - 2010 CaseIH Titan 4520 Liquid Floater (PZ7858)

2010 CaseIH Titan 4520 Liquid Floater (PZ7858), diesel engine, Allison automatic transmission, air conditioning, heat, Am/Fm CD stereo, FLX610 2000 gallon stainless steel liquid system (S/N Y6T021397), 60/80' boom, foam marker, poly foam marker tank, top poly rinse tank, Good Year 54x31.00R26 front tires, Good Year 1050/50R32 rear tires, Raven monitor, Raven SmarTrax, lightbar, shows 1497 hours. Notes: Item Location: Mellott, IN 47958 Equipment Sold "AS IS, WHERE IS": All equipment/property is sold "AS IS, WHERE IS" with no warranty or guarantees, expressed or implied, No operational assessments have been made by DPA Auctions on this item, it has been photographed ONLY.



---

### #29 - 2006 Ford F750 Flatbed Truck (PZ7869)

2006 Ford F750 Flatbed Truck (PZ7869), diesel engine, automatic transmission, air conditioning, heat, Am/Fm CD stereo, cruise control, power windows & locks, single axle, 12' wood flatbed, 11R22.5 front tires, 295/75R22.5 rear tires, shows 261,305 miles. Notes: Item Location: Kingman, IN 47952 Equipment Sold "AS IS, WHERE IS": All equipment/property is sold "AS IS, WHERE IS" with no warranty or guarantees, expressed or implied, No operational assessments have been made by DPA Auctions on this item, it has been photographed ONLY.



---

### #30 - 2000 Freightliner Truck (PZ7870)

2000 Freightliner Truck (PZ7870), Cummins ISM diesel engine, 10 speed transmission, air conditioning, heat, Am/Fm cassette radio, cruise control, engine brake, tandem axle, full screw, 11R22.5 tires, shows 1,471,877 miles. Notes: Item Location: Kingman, IN 47952 Equipment Sold "AS IS, WHERE IS": All equipment/property is sold "AS IS, WHERE IS" with no warranty or guarantees, expressed or implied, No operational assessments have been made by DPA Auctions on this item, it has been photographed ONLY.



---

### #31 - 1995 Ford Aeromax L9000 Truck (PZ7871)

1995 Ford Aeromax L9000 Truck (PZ7871), Cummins N14 diesel engine, manual transmission, heat, Am/Fm radio, tandem axle, full screw, air ride suspension, 11R24.5 front tires, 285/75R24.5 rear tires, Dry tender box is NOT included, shows 531,386 miles. Notes: Dry tender box is NOT included. They will be taking it off. Please contact seller for more information. Item Location: Kingman, IN 47952 Equipment Sold "AS IS, WHERE IS": All equipment/property is sold "AS IS, WHERE IS" with no warranty or guarantees, expressed or implied, No operational assessments have been made by DPA Auctions on this item, it has been photographed ONLY.



---

### #32 - 2004 Corn Pro Gooseneck Trailer (PZ7874)

2004 Corn Pro Gooseneck Trailer (PZ7874), 2004 Corn Pro gooseneck trailer, 19' wood deck, 5' beaver tail, tandem axle, dual wheels, fold down ramps, LT235/85R16 tires. Notes: Item Location: Rockville, IN 47872 Equipment Sold "AS IS, WHERE IS": All equipment/property is sold "AS IS, WHERE IS" with no warranty or guarantees, expressed or implied, No operational assessments have been made by DPA Auctions on this item, it has been photographed ONLY.



---

### #33 - Dry Tender Box (PZ7888)

Dry Tender Box (PZ7888), 8 ton dry tender box, rear discharge auger, roll over tarp. Notes: Item Location: Brazil, IN 47834 Equipment Sold "AS IS, WHERE IS": All equipment/property is sold "AS IS, WHERE IS" with no warranty or guarantees, expressed or implied, No operational assessments have been made by DPA Auctions on this item, it has been photographed ONLY.





### #34 - 1982 Ford 8000 Flatbed Truck (PZ7890)

1982 Ford 8000 Flatbed Truck (PZ7890), 3208 diesel engine, 10 speed transmission, heat, Am/Fm radio, tandem axle, full screw, 19' wood flatbed, Ventur crane, 11R22.5 tires, shows 47,831 miles. Notes: Item Location: Brazil, IN 47834 Equipment Sold "AS IS, WHERE IS": All equipment/property is sold "AS IS, WHERE IS" with no warranty or guarantees, expressed or implied, No operational assessments have been made by DPA Auctions on this item, it has been photographed ONLY.



### #35 - Pump (PZ7877)

Pump (PZ7877) Corken pump, 5 hp electric motor, 2 - Corken pumps, repair kit. Notes: Item Location: Brazil, IN 47834 Equipment Sold "AS IS, WHERE IS": All equipment/property is sold "AS IS, WHERE IS" with no warranty or guarantees, expressed or implied, No operational assessments have been made by DPA Auctions on this item, it has been photographed ONLY.



### #36 - Parts (PZ7879)

Parts (PZ7879), Pallet of NH3 parts, valves, hose. Notes: Item Location: Brazil, IN 47834 Equipment Sold "AS IS, WHERE IS": All equipment/property is sold "AS IS, WHERE IS" with no warranty or guarantees, expressed or implied, No operational assessments have been made by DPA Auctions on this item, it has been photographed ONLY.



### #37 - 2008 CaseIH FLX3020 Liquid Floater (PZ7857)

2008 CaseIH FLX3020 Liquid Floater (PZ7857), diesel engine, Allison automatic transmission, air conditioning, heat, Am/Fm CD stereo, FLX610 2000 gallon stainless steel liquid system (S/N Y7T021609), 60/80' boom, foam marker, poly foam marker tank, top poly rinse tank, Good Year 1000/50R25 tires, Raven monitor, Raven GPS, shows 2701 hours. Notes: Item Location: Mellott, IN 47958 Equipment Sold "AS IS, WHERE IS": All equipment/property is sold "AS IS, WHERE IS" with no warranty or guarantees, expressed or implied, No operational assessments have been made by DPA Auctions on this item, it has been photographed ONLY.



### #38 - NH3 Pump (PZ7880)

NH3 Pump (PZ7880), NH3 pump. Notes: Item Location: Brazil, IN 47834 Equipment Sold "AS IS, WHERE IS": All equipment/property is sold "AS IS, WHERE IS" with no warranty or guarantees, expressed or implied, No operational assessments have been made by DPA Auctions on this item, it has been photographed ONLY.



### #39 - Phase Converter (PZ7881)

Phase Converter (PZ7881), Roto - Phase rotary phase converter, model HD10. Notes: Item Location: Brazil, IN 47834 Equipment Sold "AS IS, WHERE IS": All equipment/property is sold "AS IS, WHERE IS" with no warranty or guarantees, expressed or implied, No operational assessments have been made by DPA Auctions on this item, it has been photographed ONLY.



### #40 - Phase Converter (PZ7882)

Phase Converter (PZ7882), Roto - Phase rotary phase converter, model HD15. Notes: Item Location: Brazil, IN 47834 Equipment Sold "AS IS, WHERE IS": All equipment/property is sold "AS IS, WHERE IS" with no warranty or guarantees, expressed or implied, No operational assessments have been made by DPA Auctions on this item, it has been photographed ONLY.



### #41 - NH3 Storage Tank (PZ7887)

NH3 Storage Tank (PZ7887), 12,000 gallon NH3 storage tank, Master tank volume gauge, steel stands, NO data plate. Notes: This tank must be removed by April 1st, 2018 with NO exceptions. Dismantle, removal and transportation is at the expense, risk and liability of the buyer. Item Location: Brazil, IN 47834 Equipment Sold "AS IS, WHERE IS": All equipment/property is sold "AS IS, WHERE IS" with no warranty or guarantees, expressed or implied, No operational assessments have been made by DPA Auctions on this item, it has been photographed ONLY.



### #42 - Junge Controller (PZ7884)

Junge Controller (PZ7884), Junge flow controller, Micro weigh system, Scot pump. Notes: Item Location: Brazil, IN 47834 Equipment Sold "AS IS, WHERE IS": All equipment/property is sold "AS IS, WHERE IS" with no warranty or guarantees, expressed or implied, No operational assessments have been made by DPA Auctions on this item, it has been photographed ONLY.



---

### #43 - Sidekick Direct Injection (PZ7885)

Sidekick Direct Injection (PZ7885), Tatus Sidekick direct injection system. Notes: Item Location: Brazil, IN 47834 Equipment Sold "AS IS, WHERE IS": All equipment/property is sold "AS IS, WHERE IS" with no warranty or guarantees, expressed or implied, No operational assessments have been made by DPA Auctions on this item, it has been photographed ONLY.



---

### #44 - Murphy - Cardinal Scales (PZ7886)

Murphy - Cardinal Scales (PZ7886), Murphy - Cardinal model 1522-SR 15 ton scale beam. Notes: Item Location: Brazil, IN 47834 Equipment Sold "AS IS, WHERE IS": All equipment/property is sold "AS IS, WHERE IS" with no warranty or guarantees, expressed or implied, No operational assessments have been made by DPA Auctions on this item, it has been photographed ONLY.



---

### #45 - 2008 CaseIH Titan 4520 Dry Floater (PZ7864)

2008 CaseIH Titan 4520 Dry Floater (PZ7864), diesel engine, Allison automatic transmission, air conditioning, heat, Am/Fm CD stereo, New Leader L4000 G4 - 14 stainless steel dry spreader box (S/N 127419), twin spinner, all hydraulic, PrimeX 750/55-26.5 front tires, Good Year 1000/50R25 rear tires, Raven monitor, lightbar, shows 3888 hours. Notes: Item Location: Whitesville, IN 47968 Equipment Sold "AS IS, WHERE IS": All equipment/property is sold "AS IS, WHERE IS" with no warranty or guarantees, expressed or implied, No operational assessments have been made by DPA Auctions on this item, it has been photographed ONLY.



---

### #46 - 2008 Chevrolet Silverado Extended Cab Pickup (PZ7905)

2008 Chevrolet Silverado Extended Cab Pickup (PZ7905), 4x4, gas engine, automatic transmission, air conditioning, heat, Am/Fm CD stereo, cruise control, power windows & locks, running boards, LT265/70R17 tires, shows 251,329 miles. Notes: Item Location: Fritchton, IN 47591 Equipment Sold "AS IS, WHERE IS": All equipment/property is sold "AS IS, WHERE IS" with no warranty or guarantees, expressed or implied, No operational assessments have been made by DPA Auctions on this item, it has been photographed ONLY.



---

### #47 - 2000 Chevrolet 3500 Pickup (PZ7906)

2000 Chevrolet 3500 Pickup (PZ7906), 4x4, gas engine, automatic transmission, air conditioning, heat, Am/Fm cassette radio, cruise control, running boards, LT265/75R16 tires, shows 218,412 miles. Notes: Item Location: Fritchton, IN 47591 Equipment Sold "AS IS, WHERE IS": All equipment/property is sold "AS IS, WHERE IS" with no warranty or guarantees, expressed or implied, No operational assessments have been made by DPA Auctions on this item, it has been photographed ONLY.



---

### #48 - Blu Jet Liquid Applicator (PZ7844)

Blu Jet Liquid Applicator (PZ7844), Blu Jet 11 coulter liquid injection applicator, 850 gallon poly liquid tank, John Blue ground driven pump, hydraulic wings, 12.5L-15 flotation tires. Notes: Item Location: Roselawn, IN 46372 Equipment Sold "AS IS, WHERE IS": All equipment/property is sold "AS IS, WHERE IS" with no warranty or guarantees, expressed or implied, No operational assessments have been made by DPA Auctions on this item, it has been photographed ONLY.



---

### #49 - Clark Liquid Applicator (PZ7843)

Clark Liquid Applicator (PZ7843), Clark 7 coulter liquid injection applicator, 400 gallon stainless steel liquid tank, John Blue ground driven pump, 12.5L-15 flotation tires. Notes: Item Location: Roselawn, IN 46372 Equipment Sold "AS IS, WHERE IS": All equipment/property is sold "AS IS, WHERE IS" with no warranty or guarantees, expressed or implied, No operational assessments have been made by DPA Auctions on this item, it has been photographed ONLY.



---

### #50 - 2000 Freightliner FL80 Truck (PZ7845)

2000 Freightliner FL80 Truck (PZ7845), Cummins diesel engine, automatic transmission, air conditioning, heat, Am/Fm radio, cruise control, tandem axle, full screw, 11R22.5 front tires, 295/75R22.5 rear tires, shows 188,433 miles. Notes: Item Location: Roselawn, IN 46372 Equipment Sold "AS IS, WHERE IS": All equipment/property is sold "AS IS, WHERE IS" with no warranty or guarantees, expressed or implied, No operational assessments have been made by DPA Auctions on this item, it has been photographed ONLY.



---

### #51 - 2011 Terra Gator 8303 Dry Floater (PZ7868)

2011 Terra Gator 8303 Dry Floater (PZ7868), Sisu diesel engine, CVT transmission, air conditioning, heat, Am/Fm CD stereo, New Leader L4000 G4 stainless steel dry spreader box (S/N 132177), twin spinner, all hydraulic, Good Year 1000/50R25 front tires, Michelin 1000/50R25 rear tires, Raven SmarTrax, Raven monitor, shows 2732 hours. Notes: Crack in glass, Needs A/C system, Needs belt over chain. Please contact seller for more information on this machine. Item Location: Kingman, IN 47952 Equipment Sold "AS IS, WHERE IS": All equipment/property is sold "AS IS, WHERE IS" with no warranty or guarantees, expressed or implied, No operational assessments have been made by DPA Auctions on this item, it has been photographed ONLY.



---

### #52 - 2003 Sterling AT9500 Truck (PZ7846)

2003 Sterling AT9500 Truck (PZ7846), Cummins ISM diesel engine, 10 speed transmission, air conditioning, heat, Am/Fm cassette radio, cruise control, tandem axle, full screw, air ride suspension, 5th wheel, 11R24.5 tires. Notes: Item Location: Roselawn, IN 46372 Equipment Sold "AS IS, WHERE IS": All equipment/property is sold "AS IS, WHERE IS" with no warranty or guarantees, expressed or implied, No operational assessments have been made by DPA Auctions on this item, it has been photographed ONLY.



---

### #53 - Case 85XT Skid Steer (PZ7876)

Case 85XT Skid Steer (PZ7876), diesel engine, hydrostatic transmission, canopy, lights bucket, 12-16.5 tires, shows 1755 hours. Notes: Item Location: Terre Haute, IN 47802 Equipment Sold "AS IS, WHERE IS": All equipment/property is sold "AS IS, WHERE IS" with no warranty or guarantees, expressed or implied, No operational assessments have been made by DPA Auctions on this item, it has been photographed ONLY.



---

### #54 - 1988 IHC S1900 Truck (PZ7892)

1988 IHC S1900 Truck (PZ7892), diesel engine, 10 speed transmission, air conditioning, heat, tandem axle, full screw, shows 880,908 miles. Notes: Some tires may be taken off this truck and replaced with other tires. Please call seller for more information. Item Location: Farmersburg, IN 47850 Equipment Sold "AS IS, WHERE IS": All equipment/property is sold "AS IS, WHERE IS" with no warranty or guarantees, expressed or implied, No operational assessments have been made by DPA Auctions on this item, it has been photographed ONLY.



---

### #55 - Gehl 540 Loader (PZ7891)

Gehl 540 Loader (PZ7891), diesel engine, hydrostatic transmission, canopy, lights, bucket, 33x15.50-16.5 tires. Notes: Parking brake does not work. Item Location: Clay City, IN 47841 Equipment Sold "AS IS, WHERE IS": All equipment/property is sold "AS IS, WHERE IS" with no warranty or guarantees, expressed or implied, No operational assessments have been made by DPA Auctions on this item, it has been photographed ONLY.



---

### #56 - Komatsu WA180 Payloader (PZ7926)

Komatsu WA180 Payloader (PZ7926), diesel engine, shuttle shift transmission, cab, lights, bucket, shows 4119. Notes: Glass is cracked. Item Location: Mentone, IN 46539 Equipment Sold "AS IS, WHERE IS": All equipment/property is sold "AS IS, WHERE IS" with no warranty or guarantees, expressed or implied, No operational assessments have been made by DPA Auctions on this item, it has been photographed ONLY.



---

### #57 - 2003 Terra Gator 6103 Dry Floater (PZ7872)

2003 Terra Gator 6103 Dry Floater (PZ7872), John Deere diesel engine, Terra Shift transmission, air conditioning, heat, Am/Fm CD stereo, New Leader 3020 G4 stainless steel dry spreader box, twin spinner, all hydraulic, Good Year 1000/50R25 tires, Raven monitor, Raven SmarTrax, Raven SCS660 monitor, shows 7232 hours. Notes: Item Location: Rockville, IN 47872 Equipment Sold "AS IS, WHERE IS": All equipment/property is sold "AS IS, WHERE IS" with no warranty or guarantees, expressed or implied, No operational assessments have been made by DPA Auctions on this item, it has been photographed ONLY.



---

### #58 - 2001 K & M Trailer (PZ7925)

2001 K & M Trailer (PZ7925), 2001 K & M approx. 24' trailer, pintal hitch, tandem axle dual wheels, ramps. Notes: Item Location: Mentone, IN 46539 Equipment Sold "AS IS, WHERE IS": All equipment/property is sold "AS IS, WHERE IS" with no warranty or guarantees, expressed or implied, No operational assessments have been made by DPA Auctions on this item, it has been photographed ONLY.



---

### #59 - Tokheim Meter (PZ7898)

Tokheim Meter (PZ7898), Tokheim meter/pump. Notes: Item Location: Vincennes, IN 47591 Equipment Sold "AS IS, WHERE IS": All equipment/property is sold "AS IS, WHERE IS" with no warranty or guarantees, expressed or implied, No operational assessments have been made by DPA Auctions on this item, it has been photographed ONLY.



---

### #60 - Veeder-Root Meter (PZ7900)

Veeder-Root Meter (PZ7900), Veeder-Root meter, Total control pump. Notes: Item Location: Vincennes, IN 47591 Equipment Sold "AS IS, WHERE IS": All equipment/property is sold "AS IS, WHERE IS" with no warranty or guarantees, expressed or implied, No operational assessments have been made by DPA Auctions on this item, it has been photographed ONLY.



---

### #61 - Veeder-Root Meter (PZ7901)

Veeder-Root Meter (PZ7901), Veeder-Root meter, Total control pump. Notes: Item Location: Vincennes, IN 47591 Equipment Sold "AS IS, WHERE IS": All equipment/property is sold "AS IS, WHERE IS" with no warranty or guarantees, expressed or implied, No operational assessments have been made by DPA Auctions on this item, it has been photographed ONLY.



---

### #62 - Veeder-Root Meter (PZ7902)

Veeder-Root Meter (PZ7902), Veeder-Root meter, Total control pump. Notes: Item Location: Vincennes, IN 47591 Equipment Sold "AS IS, WHERE IS": All equipment/property is sold "AS IS, WHERE IS" with no warranty or guarantees, expressed or implied, No operational assessments have been made by DPA Auctions on this item, it has been photographed ONLY.



---

### #63 - Tokheim Meter (PZ7903)

Tokheim Meter (PZ7903), Tokheim meter/pump. Notes: Item Location: Vincennes, IN 47591 Equipment Sold "AS IS, WHERE IS": All equipment/property is sold "AS IS, WHERE IS" with no warranty or guarantees, expressed or implied, No operational assessments have been made by DPA Auctions on this item, it has been photographed ONLY.



---

### #64 - 2006 Hagie STS12 Sprayer (PZ7904)

2006 Hagie STS12 Sprayer (PZ7904), Cummins diesel engine, hydrostatic transmission, air conditioning, heat, Am/Fm CD stereo, 1200 gallon stainless steel liquid system, 100' boom, foam marker, stainless steel foam marker tank, top poly rinse tank, Good Year Ultra Sprayer 320/90R50 tires, lightbar, Raven SmarTrax, Norac UC4 Total control, Raven monitor, shows 3306 hours. Notes: Item Location: Fritchton, IN 47591 Equipment Sold "AS IS, WHERE IS": All equipment/property is sold "AS IS, WHERE IS" with no warranty or guarantees, expressed or implied, No operational assessments have been made by DPA Auctions on this item, it has been photographed ONLY.



---

### #65 - Convey - All Seed Tender (PZ7896)

Convey - All Seed Tender (PZ7896), Convey - All model CST 1634 seed tender, rear discharge conveyor, electric roll over tarp. Notes: Item Location: New Lebanon, IN 47882 Equipment Sold "AS IS, WHERE IS": All equipment/property is sold "AS IS, WHERE IS" with no warranty or guarantees, expressed or implied, No operational assessments have been made by DPA Auctions on this item, it has been photographed ONLY.



---

### #66 - New Holland L180 Skid Steer (PZ7894)

New Holland L180 Skid Steer (PZ7894), diesel engine, hydrostatic transmission, canopy, lights, bucket, 12-16.5 tires, shows 1381 hours. Notes: Skid steer does not move, may be an electrical issue. Please call seller for more information. Item Location: New Lebanon, IN 47882 Equipment Sold "AS IS, WHERE IS": All equipment/property is sold "AS IS, WHERE IS" with no warranty or guarantees, expressed or implied, No operational assessments have been made by DPA Auctions on this item, it has been photographed ONLY.



---

### #67 - 2001 IHC 4900 Flatbed Truck (PZ7895)

2001 IHC 4900 Flatbed Truck (PZ7895), DT 466E diesel engine, Allison automatic transmission, heat, Am/Fm radio, cruise control, tandem axle, full screw, spring suspension, 14' wood flatbed, 5th wheel ball, 11R22.5 tires, shows 267,939 miles. Notes: Item Location: New Lebanon, IN 47882 Equipment Sold "AS IS, WHERE IS": All equipment/property is sold "AS IS, WHERE IS" with no warranty or guarantees, expressed or implied, No operational assessments have been made by DPA Auctions on this item, it has been photographed ONLY.



---

### #68 - 2010 Magnola Dry Tender Trailer (PZ7847)

2010 Magnola Dry Tender Trailer (PZ7847), 2010 Magnola dry tender trailer, tandem axle, spring suspension, Adams 24 ton stainless steel dry tender box, side discharge auger, roll over tarp, Deutz diesel engine, 255/70R22.5 tires, shows 204 hours. Notes: Item Location: Pleasant Ridge, IN 47978 Equipment Sold "AS IS, WHERE IS": All equipment/property is sold "AS IS, WHERE IS" with no warranty or guarantees, expressed or implied, No operational assessments have been made by DPA Auctions on this item, it has been photographed ONLY.



---

### #69 - 1987 Ford F800 Truck (PZ7842)

1987 Ford F800 Truck (PZ7842), diesel engine, 5 speed transmission, 2 speed rear end, heat, Am/Fm cassette radio, single axle, 10.00R20 tires, shows 120,012 miles. Notes: Item Location: Ade, IN 47922 Equipment Sold "AS IS, WHERE IS": All equipment/property is sold "AS IS, WHERE IS" with no warranty or guarantees, expressed or implied, No operational assessments have been made by DPA Auctions on this item, it has been photographed ONLY.





### #70 - 1985 Ford 700 Truck (PZ7848)

1985 Ford 700 Truck (PZ7848), diesel engine, 5 speed transmission, heat, radio, single axle, 11R22.5 tires, shows 204,347 miles. Notes: This truck is a NON Runner. Please call seller for further information. Item Location: Rensselaer, IN 47978 Equipment Sold "AS IS, WHERE IS": All equipment/property is sold "AS IS, WHERE IS" with no warranty or guarantees, expressed or implied, No operational assessments have been made by DPA Auctions on this item, it has been photographed ONLY.



### #71 - 1990 Chevrolet Kodiak Fuel Truck (PZ7851)

1990 Chevrolet Kodiak Fuel Truck (PZ7851), gas engine, 5 speed transmission, 2 speed rear end, heat, Am/Fm radio, Tri State 2100 gallon petroleum tank, Neptune meter, 2 - hose reels with hose, 265/75R22.5 front tires, 11R22.5 rear tires, shows 240,584 miles. Notes: This truck is a NON Runner. Please call seller for further information. Item Location: Rensselaer, IN 47978 Equipment Sold "AS IS, WHERE IS": All equipment/property is sold "AS IS, WHERE IS" with no warranty or guarantees, expressed or implied, No operational assessments have been made by DPA Auctions on this item, it has been photographed ONLY.



### #72 - 2006 Chevrolet 2500HD Utility Truck (PZ7850)

2006 Chevrolet 2500HD Utility Truck (PZ7850), 4x4, gas engine, automatic transmission, air conditioning, heat, Am/Fm radio, cruise control, Reading utility box, LT245/75R16 tires, shows 183,695 miles. Notes: Item Location: Rensselaer, IN 47978 Equipment Sold "AS IS, WHERE IS": All equipment/property is sold "AS IS, WHERE IS" with no warranty or guarantees, expressed or implied, No operational assessments have been made by DPA Auctions on this item, it has been photographed ONLY.



### #73 - 1990 Chevrolet Pickup (PZ7849)

1990 Chevrolet Pickup (PZ7849), 4x4, gas engine, automatic transmission, air conditioning, Am/Fm radio, cruise control, snowblade, LT245/75R16 tires, shows 161,721 miles. Notes: No brakes, weak batteries. Please call seller for more information on this pickup. Item Location: Rensselaer, IN 47978 Equipment Sold "AS IS, WHERE IS": All equipment/property is sold "AS IS, WHERE IS" with no warranty or guarantees, expressed or implied, No operational assessments have been made by DPA Auctions on this item, it has been photographed ONLY.



### #74 - 2004 IHC 7600 Silver Wheels Dry Floater (PZ7893)

2004 IHC 7600 Silver Wheels Dry Floater (PZ7893), Cummins ISM diesel engine, Allison automatic transmission, air conditioning, heat, Am/Fm cassette radio, cruise control, New Leader L3220 G4 MultApplier stainless steel dry spreader box (S/N 124960), twin spinner, all hydraulic, Good Year 48x31.00R20 front tires, Good Year 66x43.00-25 rear tires, Raven monitor, lightbar, shows 40,903 miles. Notes: Item Location: Sullivan, IN 47882 Equipment Sold "AS IS, WHERE IS": All equipment/property is sold "AS IS, WHERE IS" with no warranty or guarantees, expressed or implied, No operational assessments have been made by DPA Auctions on this item, it has been photographed ONLY.



### #75 - 2000 Freightliner Flatbed Truck (PZ7852)

2000 Freightliner Flatbed Truck (PZ7852), Cat 3126 diesel engine, 6 speed transmission, air conditioning, heat, Am/Fm cassette radio, cruise control, 10' steel flatbed, 5th wheel ball, side storage boxes, 245/70R19.5 tires, shows 64,808 miles. Notes: Item Location: Templeton, IN 47986 Equipment Sold "AS IS, WHERE IS": All equipment/property is sold "AS IS, WHERE IS" with no warranty or guarantees, expressed or implied, No operational assessments have been made by DPA Auctions on this item, it has been photographed ONLY.



### #76 - 2013 John Deere 4940 Sprayer (NP6031)

2013 John Deere 4940 Sprayer (NP6031), John Deere diesel engine (S/N RG6090R048292), hydrostatic transmission, heat, air conditioning, Am/Fm CD radio, 1,200 gallon stainless steel liquid system, 120' boom on 15" spacing, 5-way nozzle bodies, stainless steel chemical inductor, high flow solution pump, 380/105R50 tires, 12 bolt rim pattern, wheel slip control, Xenon lights, hydraulic tread adjust, belly shield, row crop fenders, StarFire iTC globe, John Deere GreenStar 3 monitor, shows 3,047 hours. Notes: Item Location: Sabetha, KS 66534 Equipment Sold "AS IS, WHERE IS": All equipment/property is sold "AS IS, WHERE IS" with no warranty or guarantees, expressed or implied, No operational assessments have been made by DPA Auctions on this item, it has been photographed ONLY.



### #77 - Tyler Spreader (DR7663, Unit 54714)

Tyler Spreader (DR7663, Unit 54714), 5 ton stainless steel dry buggy, Honda gas engine (is Loose), tandem axle, ground drive web chain, PTO drive rear spinner, 12.5L-15 tires. Notes: Item Location: Hardin, KY 42048 Equipment Sold "AS IS, WHERE IS": All equipment/property is sold "AS IS, WHERE IS" with no warranty or guarantees, expressed or implied, No operational assessments have been made by DPA Auctions on this item, it has been photographed ONLY.



---

### #78 - Willmar 500 Spreader (DR7666, Unit 23066)

Willmar 500 Spreader (DR7666, Unit 23066), 5 ton stainless steel buggy, narrow track, tandem axle, ground drive web chain, PTO drive rear spinners, 11L-15 tires. Notes: Item Location: Hardin, KY 42048 Equipment Sold "AS IS, WHERE IS": All equipment/property is sold "AS IS, WHERE IS" with no warranty or guarantees, expressed or implied, No operational assessments have been made by DPA Auctions on this item, it has been photographed ONLY.



---

### #79 - Chandler Spreader (DR7667, Unit 52900)

Chandler Spreader (DR7667, Unit 52900), 5 ton stainless steel buggy, narrow track, tandem axle, ground drive web chain, hydraulic drive rear spinners, 11L-15 tires. Notes: Item Location: Hardin, KY 42048 Equipment Sold "AS IS, WHERE IS": All equipment/property is sold "AS IS, WHERE IS" with no warranty or guarantees, expressed or implied, No operational assessments have been made by DPA Auctions on this item, it has been photographed ONLY.



---

### #80 - Mitsubishi 25 Forklift (DR7668, Unit 52839)

Mitsubishi 25 Forklift (DR7668, Unit 52839), 5000 lb capacity, LP gas engine, shuttle shift transmission, 48" forks, hydraulic side shift, pneumatic tires, shows 5826 hours. Notes: Item Location: Hardin, KY 42048 Equipment Sold "AS IS, WHERE IS": All equipment/property is sold "AS IS, WHERE IS" with no warranty or guarantees, expressed or implied, No operational assessments have been made by DPA Auctions on this item, it has been photographed ONLY.



---

### #81 - 1000 Gallon Nurse Tank (DR7665, Unit 54699)

1000 Gallon Nurse Tank (DR7665, Unit 54699), 1000 gallon stainless steel liquid nurse tank, tandem axle, Honda gas engine IS STUCK, 12.5L-15. Notes: Item Location: Hardin, KY 42048 Equipment Sold "AS IS, WHERE IS": All equipment/property is sold "AS IS, WHERE IS" with no warranty or guarantees, expressed or implied, No operational assessments have been made by DPA Auctions on this item, it has been photographed ONLY.



---

### #82 - 2009 Spra Coupe 7660 Sprayer (PZ7866)

2009 Spra Coupe 7660 Sprayer (PZ7866), Perkins 174 hp diesel engine, hydrostatic transmission, air conditioning, heat, Am/Fm CD stereo, 750 gallon poly liquid system, 60/90' boom, 20" spacing, fence row nozzles left/right, 50 gallon rinse tank, Good Year 380/80R38 front tires, Good Year 480/80R46 rear tires, Trimble FM100 controller with full auto guidance & sectional control, Integrated EZ pilot unlocked to RTK, shows 1065 hours. Notes: Item Location: Whitesville, IN 47968 Equipment Sold "AS IS, WHERE IS": All equipment/property is sold "AS IS, WHERE IS" with no warranty or guarantees, expressed or implied, No operational assessments have been made by DPA Auctions on this item, it has been photographed ONLY.



---

### #83 - Michelin Row Crops (DR7664)

Michelin Row Crops (DR7664), set of (4) 380/90R-46 row crops, mounted on 10 bolt wheels off RBR Vector 300. Notes: Item Location: Hardin, KY 42048 Equipment Sold "AS IS, WHERE IS": All equipment/property is sold "AS IS, WHERE IS" with no warranty or guarantees, expressed or implied, No operational assessments have been made by DPA Auctions on this item, it has been photographed ONLY.



---

### #84 - Doyle Blender (DR7658)

Doyle Blender (DR7658), 8 ton horizontal dry fertilizer blender, electric drive motor, reducer, NO DRIVE. Notes: Item Location: Kevil, KY 42053 Equipment Sold "AS IS, WHERE IS": All equipment/property is sold "AS IS, WHERE IS" with no warranty or guarantees, expressed or implied, No operational assessments have been made by DPA Auctions on this item, it has been photographed ONLY.



---

### #85 - 2010 New Holland L230 (DR7656)

2010 New Holland L230 (DR7656), diesel engine, NON RUNNING, hydrostatic drive, cab heat/air conditioning, quick tach front w/84" bucket, AM/FM radio, auxiliary hydraulic outlets, 14-17.5 tires, shows 591 hours, HOURS ARE NOT CORRECT. Notes: Skid loader DOES NOT currently run. Engine got hot and has not run since then. Seller wishes not to put money into it. Item Location: Kevil, KY 42053 Equipment Sold "AS IS, WHERE IS": All equipment/property is sold "AS IS, WHERE IS" with no warranty or guarantees, expressed or implied, No operational assessments have been made by DPA Auctions on this item, it has been photographed ONLY.



### #86 - Toyota Lfit (DR7657, Unit 52662)

Toyota Lfit (DR7657, Unit 52662), 5000 lb capacity, LP gas engine, shuttle shift drive, OROPS, 2 stage mast, hydraulic side shift, pneumatic tires, 48" forks, shows 9074 hours. Notes: Forklift runs and operates fine, BUT there are a few teeth missing on flywheel when starting. Item Location: Fancy Farm, KY 42039 Equipment Sold "AS IS, WHERE IS": All equipment/property is sold "AS IS, WHERE IS" with no warranty or guarantees, expressed or implied, No operational assessments have been made by DPA Auctions on this item, it has been photographed ONLY.



### #87 - 2014 John Deere S660 Combine (NP6095)

2014 John Deere S660 Combine (NP6095), 2WD, John Deere diesel engine, 3 speed electric shift, premium cab, Am/Fm radio, enhanced air suspension seat, round bar concave, contour master, auto reel speed, contour feederhouse, fore/aft reel, 6.9M IPC unloading auger, HID lights and extremity, 520/85R42 drive tires, duals, 750/65R26 steering tires, grain loss monitor, side hill performance package, grain tank size: 300, separator type: rotor, terrain type: conventional, shows 786 engine hours, shows 615 separator hours. Notes: GPS receiver and display DO NOT SELL with this combine. Excellent condition, extended wear package, original plastic still on the seat! Item Location: Baileyville, KS 66404 Equipment Sold "AS IS, WHERE IS": All equipment/property is sold "AS IS, WHERE IS" with no warranty or guarantees, expressed or implied, No operational assessments have been made by DPA Auctions on this item, it has been photographed ONLY.



### #88 - KSI 1610-37 Conveyor (DR7660)

KSI 1610-37 Conveyor (DR7660), 10" tube conveyor, 10 hp electric drive motor. Notes: Item Location: Fancy Farm, KY 42039 Equipment Sold "AS IS, WHERE IS": All equipment/property is sold "AS IS, WHERE IS" with no warranty or guarantees, expressed or implied, No operational assessments have been made by DPA Auctions on this item, it has been photographed ONLY.



### #89 - 2002 Terra Gator 6103 Dry Floater (PZ7927)

2002 Terra Gator 6103 Dry Floater (PZ7927), John Deere diesel engine, Terra Shift transmission, air conditioning, heat, Am/Fm radio, New Leader 3020 G4 stainless steel dry spreader box, twin spinner, all hydraulic, Raven monitor, shows 6967 hours. Notes: Item Location: Star City, IN 46985 Equipment Sold "AS IS, WHERE IS": All equipment/property is sold "AS IS, WHERE IS" with no warranty or guarantees, expressed or implied, No operational assessments have been made by DPA Auctions on this item, it has been photographed ONLY.



### #90 - 2011 New Leader L3220 G4-11 Dry Spreader Box (NP6030)

2011 New Leader L3220 G4-11 Dry Spreader Box (NP6030), stainless steel, single product, fertilizer and lime box, dual spinners, belt over chain. Notes: Came off Lot #76 which is a 2013 John Deere 4940 machine. Cart under the dry box DOES NOT SELL with this lot. Item Location: Sabetha, KS 66534 Equipment Sold "AS IS, WHERE IS": All equipment/property is sold "AS IS, WHERE IS" with no warranty or guarantees, expressed or implied, No operational assessments have been made by DPA Auctions on this item, it has been photographed ONLY.



### #91 - 2013 Fast Sprayer Boom (NP6059)

2013 Fast Sprayer Boom (NP6059), Model 983P, 120' boom, auto leveling, 3-way nozzle bodies, (2) 450 gallon stainless steel tanks, Raven flow meter, 10' sections control. Notes: John Deere tractor DOES NOT SELL with this lot, just the FAST SPRAYER BOOM. Item Location: Miami, OK 74354 Equipment Sold "AS IS, WHERE IS": All equipment/property is sold "AS IS, WHERE IS" with no warranty or guarantees, expressed or implied, No operational assessments have been made by DPA Auctions on this item, it has been photographed ONLY.



### #92 - 2006 CaseIH FLX3020 Dry Floater (NP6037)

2006 CaseIH FLX3020 Dry Floater (NP6037), CNH diesel engine, Allison transmission, heat, air conditioning, Am/Fm CD radio, CaseIH Flex-Air FLX810 dry air flow system (S/N Y6T021253), 2-bin, 70' boom, Shurco Shur-Lok electric roll tarp, Michelin 1000/50R25 tires, Raven SmarTrax, lightbar, Raven Viper Pro monitor, shows 9,684 hours. Notes: Cracked front windshield, see photos. Item Location: Beverly, KS 67423 Equipment Sold "AS IS, WHERE IS": All equipment/property is sold "AS IS, WHERE IS" with no warranty or guarantees, expressed or implied, No operational assessments have been made by DPA Auctions on this item, it has been photographed ONLY.



### #93 - 1990 International 7100 (DR7659, Unit 48628)

1990 International 7100 (DR7659, Unit 48628), DT 466 diesel engine, 6 speed transmission, single axle, air brakes, 5th wheel plate, AM/FM cassette radio, 11R-22.5 front tires, 24.5 rear drive tires, aluminum wheels, shows 219,171 miles. Notes: This truck NEEDS a solenoid, starter does not catch everytime. PLEASE ALLOW AT LEAST 60 DAYS FOR TITLE TRANSFER. Item Location: Fancy Farm, KY 42039 Equipment Sold "AS IS, WHERE IS": All equipment/property is sold "AS IS, WHERE IS" with no warranty or guarantees, expressed or implied, No operational assessments have been made by DPA Auctions on this item, it has been photographed ONLY.



### #94 - 2001 Ford F650 (DR7669, Unit 17099)

2001 Ford F650 (DR7669, Unit 17099), diesel engine, NON RUNNER, 6 speed transmission, single axle, 15' stake bed, 24" side kit, frame mounted storage box, rear receiver hitch, AM/FM radio, air conditioning, cruise control, shows 347,751 miles, 295/75R-22.5 tires, shows 347,751 miles. Notes: Truck is a NON RUNNER, has been to shop and has a computer issue. PLEASE ALLOW AT LEAST 60 DAYS FOR TITLE TRANSFER. Item Location: Sedalia, KY 42079 Equipment Sold "AS IS, WHERE IS": All equipment/property is sold "AS IS, WHERE IS" with no warranty or guarantees, expressed or implied, No operational assessments have been made by DPA Auctions on this item, it has been photographed ONLY.



### #95 - 2004 Terra Gator 6103 Dry Floater (PZ7889)

2004 Terra Gator 6103 Dry Floater (PZ7889), John Deere diesel engine, Terra Shift transmission, air conditioning, heat, Am/Fm cassette, New Leader L3220 G4 stainless steel dry spreader box (S/N 119275), twin spinner, all hydraulic, Good Year 1000/50R25 tires, Raven Starlink GPS, lightbar, Raven monitor, shows 4583 hours, 44,207 miles. Notes: Item Location: Brazil, IN 47834 Equipment Sold "AS IS, WHERE IS": All equipment/property is sold "AS IS, WHERE IS" with no warranty or guarantees, expressed or implied, No operational assessments have been made by DPA Auctions on this item, it has been photographed ONLY.



### #96 - 2009 Chevy 1500 (RMC213, Unit 8998)

2009 Chevy 1500 (RMC213, Unit 8998), gas engine, automatic transmission, crew cab, rear receiver hitch, power windows & locks, shows 117,588 miles. Notes: Pickup has right rear fender damage see pictures. Item Location: Rosedale, MS 38769 Equipment Sold "AS IS, WHERE IS": All equipment/property is sold "AS IS, WHERE IS" with no warranty or guarantees, expressed or implied, No operational assessments have been made by DPA Auctions on this item, it has been photographed ONLY.



### #97 - 2007 John Deere 4930 Sprayer (NP6060)

2007 John Deere 4930 Sprayer (NP6060), John Deere diesel engine, hydrostatic transmission, heat, air conditioning, Am/Fm CD radio, 1,200 gallon stainless steel liquid system, 120' boom, 5-way nozzle bodies, foam marker, poly foam marker tank, stainless steel rinse tank, stainless steel chemical inductor, 380/105R50 tires, GreenStar ready, John Deere 2600 monitor, shows 3,116 hours. Notes: FARMER OWNED, farm use only, no commercial use EVER. Item Location: Cape Girardeau, MO 63701 Equipment Sold "AS IS, WHERE IS": All equipment/property is sold "AS IS, WHERE IS" with no warranty or guarantees, expressed or implied, No operational assessments have been made by DPA Auctions on this item, it has been photographed ONLY.



### #98 - 2010 John Deere 4930 (DR7680, Unit 69075)

2010 John Deere 4930 (DR7680, Unit 69075), John Deere diesel engine, hydrostatic drive, cab heat/air conditioning, New Leader stainless steel G4 dry spinner box, w/Multiplier bin, Green Star controller, Starfire globe, rear view camera, AM/FM CD radio, 380/105R50 row crop tires, shows 3465 hours. Notes: Item Location: Whiteville, TN 38075 Equipment Sold "AS IS, WHERE IS": All equipment/property is sold "AS IS, WHERE IS" with no warranty or guarantees, expressed or implied, No operational assessments have been made by DPA Auctions on this item, it has been photographed ONLY.



### #99 - Adams Applicator (DR7679)

Adams Applicator (DR7679), 7 knife side dress applicator, 700 gallon poly tank, John Blu ground drive pump. Notes: Item Location: Whiteville, TN 38075 Equipment Sold "AS IS, WHERE IS": All equipment/property is sold "AS IS, WHERE IS" with no warranty or guarantees, expressed or implied, No operational assessments have been made by DPA Auctions on this item, it has been photographed ONLY.



### #101 - 1996 International 8100 (DR7677, Unit 16477)

1996 International 8100 (DR7677, Unit 16477), Cat diesel engine, 10 speed transmission, tandem axle full screw, air brakes, 24' van box, new floor, rear cargo doors, light panel roof, frame mounted storage box, air conditioning, AM/FM cassette radio, 11R-22.5 tires, shows 123,814 miles. Notes: There are seed signs in the back that DO NOT SELL. PLEASE ALLOW AT LEAST 60 DAYS FOR TITLE TRANSFER. Item Location: Whiteville, TN 38075 Equipment Sold "AS IS, WHERE IS": All equipment/property is sold "AS IS, WHERE IS" with no warranty or guarantees, expressed or implied, No operational assessments have been made by DPA Auctions on this item, it has been photographed ONLY.



### #102 - Van Box (DR7678)

Van Box (DR7678), box ONLY, 24' van box, rear roll up door, Tommy lift gate. Notes: This is box only, truck DOES NOT SELL. Item Location: Whiteville, TN 38075 Equipment Sold "AS IS, WHERE IS": All equipment/property is sold "AS IS, WHERE IS" with no warranty or guarantees, expressed or implied, No operational assessments have been made by DPA Auctions on this item, it has been photographed ONLY.





### #103 - DMI 3100 (DR7708)

DMI 3100 (DR7708), 11 knife toolbar, (missing most knives), 3 point mount, Raven cooler, front smooth coulters, hydraulic wings. Notes: Item Location: Pembroke, KY 42266 Equipment Sold "AS IS, WHERE IS": All equipment/property is sold "AS IS, WHERE IS" with no warranty or guarantees, expressed or implied, No operational assessments have been made by DPA Auctions on this item, it has been photographed ONLY.



### #104 - DMI 3100 (DR7709)

DMI 3100 (DR7709), 13 knife toolbar, 3 point mount, Raven cooler, front smooth coulters, hydraulic wings. Notes: Item Location: Pembroke, KY 42266 Equipment Sold "AS IS, WHERE IS": All equipment/property is sold "AS IS, WHERE IS" with no warranty or guarantees, expressed or implied, No operational assessments have been made by DPA Auctions on this item, it has been photographed ONLY.



### #105 - 1999 Terra Gator 8103 Dry Floater (PZ7897)

1999 Terra Gator 8103 Dry Floater (PZ7897), John Deere diesel engine, Terra Shift transmission, air conditioning, heat, Am/Fm radio, air ride cab, New Leader 2020 G4 - 11 stainless steel dry spreader box (S/N 120591), twin spinner, all hydraulic, Good Year 1000/50R25 tires, Raven monitor, lightbar, shows 4325 hours, 42,410 miles. Notes: Item Location: Oaktown, IN 47561 Equipment Sold "AS IS, WHERE IS": All equipment/property is sold "AS IS, WHERE IS" with no warranty or guarantees, expressed or implied, No operational assessments have been made by DPA Auctions on this item, it has been photographed ONLY.



### #106 - Krause 3994W Disk (NP6057)

Krause 3994W Disk (NP6057), 34' disk, 3 section, hydraulic fold, 9 1/4" front blades, 20 3/4" rear blades, dual wheels. Notes: Item Location: Miami, OK 74354 Equipment Sold "AS IS, WHERE IS": All equipment/property is sold "AS IS, WHERE IS" with no warranty or guarantees, expressed or implied, No operational assessments have been made by DPA Auctions on this item, it has been photographed ONLY.



### #107 - 2012 Kuhn Krause Excelerator (NP6058)

2012 Kuhn Krause Excelerator (NP6058), 30' width, 3 section, hydraulic fold, hydraulic adjustable gangs, hydraulic adjustable star wheels, rear rolling baskets. Notes: Item Location: Miami, OK 74354 Equipment Sold "AS IS, WHERE IS": All equipment/property is sold "AS IS, WHERE IS" with no warranty or guarantees, expressed or implied, No operational assessments have been made by DPA Auctions on this item, it has been photographed ONLY.



### #108 - Aluminum Sprayer Boom (NP6044)

Aluminum Sprayer Boom (NP6044), 100' aluminum boom, 5-way nozzle bodies, 20" spacing. Notes: Item Location: Tonkawa, OK 74653 Equipment Sold "AS IS, WHERE IS": All equipment/property is sold "AS IS, WHERE IS" with no warranty or guarantees, expressed or implied, No operational assessments have been made by DPA Auctions on this item, it has been photographed ONLY.



### #110 - Dry Buggy (DR7704)

Dry Buggy (DR7704), 5 ton stainless steel dry spreader, 12.5L-15 tires, tandem axle, MISSING left front tire & rim, ground drive web chain, gas engine drive rear spinners. Notes: This buggy is rough has not been used for awhile. Item Location: Pembroke, KY 42266 Equipment Sold "AS IS, WHERE IS": All equipment/property is sold "AS IS, WHERE IS" with no warranty or guarantees, expressed or implied, No operational assessments have been made by DPA Auctions on this item, it has been photographed ONLY.



### #111 - Doyle Conveyor (DR7706)

Doyle Conveyor (DR7706), portable conveyor, 36' portable conveyor, 24" cleated belt, electric drive motor. Notes: Item Location: Pembroke, KY 42266 Equipment Sold "AS IS, WHERE IS": All equipment/property is sold "AS IS, WHERE IS" with no warranty or guarantees, expressed or implied, No operational assessments have been made by DPA Auctions on this item, it has been photographed ONLY.



### #112 - Case W14 (DR7703, Unit 54614)

Case W14 (DR7703, Unit 54614), NON RUNNER, diesel engine, shuttle shift transmission, 4X4, hydraulic 4 in 1 bucket, 16.9-24 tires. Notes: This loader has NOT RUN for some time. Item Location: Pembroke, KY 42266 Equipment Sold "AS IS, WHERE IS": All equipment/property is sold "AS IS, WHERE IS" with no warranty or guarantees, expressed or implied, No operational assessments have been made by DPA Auctions on this item, it has been photographed ONLY.



### #113 - Swinger 2000 (DR7707, Unit 40222)

Swinger 2000 (DR7707, Unit 40222), diesel engine, hydrostatic shuttle drive, OROPS, front quick tach 60" bucket, 31X15.50-15 tires. Notes: Item Location: Pembroke, KY 42266 Equipment Sold "AS IS, WHERE IS": All equipment/property is sold "AS IS, WHERE IS" with no warranty or guarantees, expressed or implied, No operational assessments have been made by DPA Auctions on this item, it has been photographed ONLY.



### #114 - Row Crop Tires (DR7700)

Row Crop Tires (DR7700), (4) 380/90R-46 row crop tires, mounted on rims off SS 874 RoGator. Notes: Item Location: Pembroke, KY 42266 Equipment Sold "AS IS, WHERE IS": All equipment/property is sold "AS IS, WHERE IS" with no warranty or guarantees, expressed or implied, No operational assessments have been made by DPA Auctions on this item, it has been photographed ONLY.



### #115 - Flotation Tires (DR7702)

Flotation Tires (DR7702), (4) 24.5 R-32 flotation tires, mounted on rims for RoGator 1386. Notes: Item Location: Pembroke, KY 42266 Equipment Sold "AS IS, WHERE IS": All equipment/property is sold "AS IS, WHERE IS" with no warranty or guarantees, expressed or implied, No operational assessments have been made by DPA Auctions on this item, it has been photographed ONLY.



### #116 - 2011 John Deere 630F Hydraflex (NP6100)

2011 John Deere 630F Hydraflex (NP6100), 30 ft. width, Crary air reel, equipped with full width composite fingers and field lights. Notes: Header cart DOES NOT SELL with this lot. Thoroughly cleaned after every harvest season and shedded when not in use, one owner, low acres. Item Location: Baileyville, KS 66404 Equipment Sold "AS IS, WHERE IS": All equipment/property is sold "AS IS, WHERE IS" with no warranty or guarantees, expressed or implied, No operational assessments have been made by DPA Auctions on this item, it has been photographed ONLY.



### #117 - 2008 RoGator SS 874 (DR7699, Unit 40212)

2008 RoGator SS 874 (DR7699, Unit 40212), diesel engine, hydrostatic drive, hydraulic adjustable axle, 900 gallon stainless steel liquid system, 90' boom, 5 way nozzle bodies, 10" centers, Raven Viper Pro controller, Raven Smartrax, foam markers, poly chemical inductor, saddle mounted poly rinse tank, 650/65R-38 flotation tires, shows 4547 hours. Notes: Item Location: Pembroke, KY 42266 Equipment Sold "AS IS, WHERE IS": All equipment/property is sold "AS IS, WHERE IS" with no warranty or guarantees, expressed or implied, No operational assessments have been made by DPA Auctions on this item, it has been photographed ONLY.



### #118 - 2006 Chevy 2500 (DR7697, Unit 40216)

2006 Chevy 2500 (DR7697, Unit 40216), gas engine, automatic transmission, quad cab, 4X4, rear receiver hitch, AM/FM CD radio, air conditioning, cruise control, power windows & locks, 265/75R-16 tires, shows 212,248 miles. Notes: PLEASE ALLOW AT LEAST 60 DAYS FOR TITLE TRANSFER. Item Location: Pembroke, KY 42266 Equipment Sold "AS IS, WHERE IS": All equipment/property is sold "AS IS, WHERE IS" with no warranty or guarantees, expressed or implied, No operational assessments have been made by DPA Auctions on this item, it has been photographed ONLY.



### #119 - 1993 Peterbilt 377 (DR7687, Unit 46120)

1993 Peterbilt 377 (DR7687, Unit 46120), Detroit diesel engine, 9 speed transmission, tandem axle full screw, Air Leaf suspension, day cab, 5th wheel plate, dual aluminum fuel tanks, air conditioning, 11R-22.5 tires, front aluminum wheels, shows 1,050,378 miles. Notes: PLEASE ALLOW AT LEAST 60 DAYS FOR TITLE TRANSFER. Item Location: Brownsville, TN 38012 Equipment Sold "AS IS, WHERE IS": All equipment/property is sold "AS IS, WHERE IS" with no warranty or guarantees, expressed or implied, No operational assessments have been made by DPA Auctions on this item, it has been photographed ONLY.



### #120 - 2009 RBR Vector 300 (DR7681, Unit 26413)

2009 RBR Vector 300 (DR7681, Unit 26413), Cummins diesel engine, Allison automatic transmission, New Leader L4000 G4 stainless steel dry spinner box, Multiplier bin, Raven Viper Pro controller, rear view camera, cab heat/air conditioning, AM/FM CD radio, 380/90R46 row crop tires, shows 5467 hours. Notes: Item Location: Whiteville, TN 38075 Equipment Sold "AS IS, WHERE IS": All equipment/property is sold "AS IS, WHERE IS" with no warranty or guarantees, expressed or implied, No operational assessments have been made by DPA Auctions on this item, it has been photographed ONLY.



---

### #121 - Toyota Forklift (NP6105)

Toyota Forklift (NP6105), LP gas, 5,500lb capacity, side shift, shuttle shift, pneumatic tires, triple stage mast, shows 7,525 hours, forklift operates as it should and is being used daily. Notes: LP Tank DOES NOT SELL with this forklift. Item Location: Coal Valley, IL 61240 Equipment Sold "AS IS, WHERE IS": All equipment/property is sold "AS IS, WHERE IS" with no warranty or guarantees, expressed or implied, No operational assessments have been made by DPA Auctions on this item, it has been photographed ONLY.



---

### #122 - 48" Peterbilt Unibilt Flat Top Sleeper (NP6103)

48" Peterbilt Unibilt Flat Top Sleeper (NP6103), no mattress, average condition. Notes: Item Location: Coal Valley, IL 61240 Equipment Sold "AS IS, WHERE IS": All equipment/property is sold "AS IS, WHERE IS" with no warranty or guarantees, expressed or implied, No operational assessments have been made by DPA Auctions on this item, it has been photographed ONLY.



---

### #123 - Assorted Kenworth Tow Hooks (NP6103)

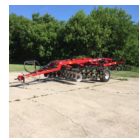
Assorted Kenworth Tow Hooks (NP6103). Notes: Item Location: Coal Valley, IL 61240 Equipment Sold "AS IS, WHERE IS": All equipment/property is sold "AS IS, WHERE IS" with no warranty or guarantees, expressed or implied, No operational assessments have been made by DPA Auctions on this item, it has been photographed ONLY.



---

### #124 - 2013 Case IH 870 (DR6131)

2013 Case IH 870 (DR6131), Ecolo-Tiger, double front gangs w/22" blades, 7 shank, rear rolling baskets. Notes: Machine is LIKE NEW. Has literally done only 400 acres. Item Location: Owatonna, MN 55060 Equipment Sold "AS IS, WHERE IS": All equipment/property is sold "AS IS, WHERE IS" with no warranty or guarantees, expressed or implied, No operational assessments have been made by DPA Auctions on this item, it has been photographed ONLY.



---

### #126 - 1994 Freightliner FLD120 (DR7688, Unit 45862)

1994 Freightliner FLD120 (DR7688, Unit 45862), Cummins diesel engine, 9 speed transmission, tandem axle full screw, air ride suspension, day cab, 5th wheel plate, dual aluminum fuel tanks, air conditioning, 11R-24.5 tires, front aluminum wheels, air conditioning, AM/FM CD radio, shows 324,782 miles. Notes: PLEASE ALLOW AT LEAST 60 DAYS FOR TITLE TRANSFER. Item Location: Brownsville, TN 38012 Equipment Sold "AS IS, WHERE IS": All equipment/property is sold "AS IS, WHERE IS" with no warranty or guarantees, expressed or implied, No operational assessments have been made by DPA Auctions on this item, it has been photographed ONLY.



---

### #127 - 1996 Freightliner FLD120 (DR7689, Unit 40784)

1996 Freightliner FLD120 (DR7689, Unit 40784), Detroit diesel engine, 10 speed transmission, engine brake, tandem axle full screw, air ride suspension, day cab, 5th wheel plate, dual aluminum fuel tanks, air conditioning, 11R-24.5 tires, front aluminum wheels, air conditioning, AM/FM CD radio, cruise control, shows 96,935 miles. Notes: PLEASE ALLOW AT LEAST 60 DAYS FOR TITLE TRANSFER. Item Location: Brownsville, TN 38012 Equipment Sold "AS IS, WHERE IS": All equipment/property is sold "AS IS, WHERE IS" with no warranty or guarantees, expressed or implied, No operational assessments have been made by DPA Auctions on this item, it has been photographed ONLY.



---

### #128 - 1997 Mack CH613 (DR7690, Unit 48928)

1997 Mack CH613 (DR7690, Unit 48928), Mack diesel engine, 9 speed transmission, tandem axle full screw, air ride suspension, Adams stainless steel hydraulic dry fertilizer tender, rear auger, roll over tarp, dual aluminum fuel tanks, cruise control, air conditioning, 11R-22.5 tires, shows 114,706 miles. Notes: PLEASE ALLOW AT LEAST 60 DAYS FOR TITLE TRANSFER. Item Location: Brownsville, TN 38012 Equipment Sold "AS IS, WHERE IS": All equipment/property is sold "AS IS, WHERE IS" with no warranty or guarantees, expressed or implied, No operational assessments have been made by DPA Auctions on this item, it has been photographed ONLY.



---

### #129 - 2010 RoGator 1386 (DR7701, Unit 17248)

2010 RoGator 1386 (DR7701, Unit 17248), Cat diesel engine, hydrostatic drive, hydraulic adjustable axle, 1300 gallon stainless steel liquid system, 90' boom, 5 way nozzle bodies, 10" centers, Raven Viper Pro controller, Raven Smartrax, 380/90R-46 row crop tires, foam markers, poly chemical inductor, saddle mounted poly rinse tank, AM/FM CD radio, shows 3494 hours. Notes: Item Location: Pembroke, KY 42266 Equipment Sold "AS IS, WHERE IS": All equipment/property is sold "AS IS, WHERE IS" with no warranty or guarantees, expressed or implied, No operational assessments have been made by DPA Auctions on this item, it has been photographed ONLY.



### #130 - 1987 Frieghtliner (DR7691, Unit 45858)

1987 Frieghtliner (DR7691, Unit 45858), Cummins diesel engine, 9 speed transmission, tandem axle full screw, dual aluminum fuel tanks, Chandler 16 ton hydraulic stainless steel dry fertilizer tender box, rear auger, roll over tarp, AM/FM CD radio, air conditioning, 24.5 tires, outside aluminum wheels, shows 567,686 miles. Notes: PLEASE ALLOW AT LEAST 60 DAYS FOR TITLE TRANSFER. Item Location: Brownsville, TN 38012 Equipment Sold "AS IS, WHERE IS": All equipment/property is sold "AS IS, WHERE IS" with no warranty or guarantees, expressed or implied, No operational assessments have been made by DPA Auctions on this item, it has been photographed ONLY.



### #131 - 1993 Ford Aero Max (DR7692, Unit 15510)

1993 Ford Aero Max (DR7692, Unit 15510), Cat diesel engine, 15 speed transmission, tandem axle full screw, air ride suspension, dual aluminum fuel tanks, Willmar Side Shooter 16 ton stainless steel hydraulic dry fertilizer tender box, roll over tarp, 24.5 tires, front aluminum wheels, Am/FM cassette radio, air conditioning, shows 26,233 miles. Notes: PLEASE ALLOW AT LEAST 60 DAYS FOR TITLE TRANSFER. Item Location: Brownsville, TN 38012 Equipment Sold "AS IS, WHERE IS": All equipment/property is sold "AS IS, WHERE IS" with no warranty or guarantees, expressed or implied, No operational assessments have been made by DPA Auctions on this item, it has been photographed ONLY.



### #132 - 1990 International 4700 (DR7693, Unit 14742)

1990 International 4700 (DR7693, Unit 14742), DT 466 diesel engine, 5 speed transmission, 2 speed rear end, single axle, 14' steel flatbed, rear receiver hitch, 22.5 tires, air conditioning, shows 307,396 miles. Notes: This truck has a NEW transmission that literally has less than 10 miles on it. Only driven back from the transmission shop. PLEASE ALLOW AT LEAST 60 DAYS FOR TITLE TRANSFER. Item Location: Brownsville, TN 38012 Equipment Sold "AS IS, WHERE IS": All equipment/property is sold "AS IS, WHERE IS" with no warranty or guarantees, expressed or implied, No operational assessments have been made by DPA Auctions on this item, it has been photographed ONLY.



### #133 - 2002 Terra Gator 8104 (DR7685, Unit 51002)

2002 Terra Gator 8104 (DR7685, Unit 51002), diesel engine, Terra Shift transmission, New Leader L4000 G4 stainless steel dry spinner box, belt/chain, chain oiler, Raven Viper Pro controller, Raven Smatrax, AM/FM cassette radio, 48X31.00-20 front tires, 66X43.00-25 rear tires, shows 16,506 miles, 1834 hours, (dash has been changed). Notes: Item Location: Brownsville, TN 38012 Equipment Sold "AS IS, WHERE IS": All equipment/property is sold "AS IS, WHERE IS" with no warranty or guarantees, expressed or implied, No operational assessments have been made by DPA Auctions on this item, it has been photographed ONLY.



### #134 - 2012 RBR Vector 300 (DR7686, Unit 78022)

2012 RBR Vector 300 (DR7686, Unit 78022), Cummins diesel engine, Allison automatic transmission, New Leader L4000 G4 stainless steel dry spinner box, Multiplier insert box, belt/chain, Raven Viper Pro controller, roll over tarp, light bar swathing, rear view camera, cab heat/air conditioning, AM/FM CD radio, 650/65R38 flotation tires, shows 3772 hours. Notes: Item Location: Brownsville, TN 38012 Equipment Sold "AS IS, WHERE IS": All equipment/property is sold "AS IS, WHERE IS" with no warranty or guarantees, expressed or implied, No operational assessments have been made by DPA Auctions on this item, it has been photographed ONLY.



### #135 - (22) NEW Needham Firming Wheels (NP6107)

(22) NEW Needham Firming Wheels (NP6107), these are for John Deere air seeders. Notes: Seller can arrange shipping, shipping will be at buyer's expense. Item Location: Baileyville, KS 66404 Equipment Sold "AS IS, WHERE IS": All equipment/property is sold "AS IS, WHERE IS" with no warranty or guarantees, expressed or implied, No operational assessments have been made by DPA Auctions on this item, it has been photographed ONLY.



### #136 - Snorkel Scissor Lift (NP6097)

Snorkel Scissor Lift (NP6097), Model SLH2584HD, lift height 25', working height 31', runs on gas or propane, platform size is 72" x 120", it will extend an additional 48", overall is 84" x 137". shows 1,387 hours. Notes: Battery is weak on this lift, propane tank NOT included, operators manual included, lift is in fair to good condition, tires are good, one of the wheel brakes will not release, it has been disconnected, other brake holds it fine. Item Location: Baileyville, KS 66404 Equipment Sold "AS IS, WHERE IS": All equipment/property is sold "AS IS, WHERE IS" with no warranty or guarantees, expressed or implied, No operational assessments have been made by DPA Auctions on this item, it has been photographed ONLY.



### #137 - 2006 Volvo L20B (DR7684, Unit 90310)

2006 Volvo L20B (DR7684, Unit 90310), John Deere diesel engine, hydrostatic drive, OROPS, 72" front bucket, forks, 340/80R-18 tires. Notes: This loader starts and runs, BUT there is a bolt broke off in the pump that happened replacing a gasket that leaks a lot. Bolt and gasket need repaired. Loader does have a NEW computer box. Item Location: Covington, TN 38019 Equipment Sold "AS IS, WHERE IS": All equipment/property is sold "AS IS, WHERE IS" with no warranty or guarantees, expressed or implied, No operational assessments have been made by DPA Auctions on this item, it has been photographed ONLY.





### #138 - 2001 Swinger 3000 (DR7694, Unit 88205)

2001 Swinger 3000 (DR7694, Unit 88205), diesel engine, hydrostatic shuttle shift, OROPS, shows 1920 hours. Notes: Item Location: Alamo, TN 38001 Equipment Sold "AS IS, WHERE IS": All equipment/property is sold "AS IS, WHERE IS" with no warranty or guarantees, expressed or implied, No operational assessments have been made by DPA Auctions on this item, it has been photographed ONLY.



### #139 - New Holland W80B (DR7696, Unit 78077)

New Holland W80B (DR7696, Unit 78077), diesel engine, NON RUNNER see notes, hydrostatic shuttle drive, has front quick tach, 96" front bucket, joystick controls. Notes: This loader was driving down the road and lost ALL power to everything. It is believed to be a bad ground but has not been checked and has been replaced. Item Location: Union City, TN 38261 Equipment Sold "AS IS, WHERE IS": All equipment/property is sold "AS IS, WHERE IS" with no warranty or guarantees, expressed or implied, No operational assessments have been made by DPA Auctions on this item, it has been photographed ONLY.



### #140 - Flotation Tires (DR7711)

Flotation Tires (DR7711), (4) 380/90R-46 row crop Michelin tires, mounted on 10 bolt rims for RBR Vector. Notes: Item Location: Portland, TN 37148 Equipment Sold "AS IS, WHERE IS": All equipment/property is sold "AS IS, WHERE IS" with no warranty or guarantees, expressed or implied, No operational assessments have been made by DPA Auctions on this item, it has been photographed ONLY.



### #141 - 2012 Chevy 2500 (DR7712, Unit 24637)

2012 Chevy 2500 (DR7712, Unit 24637), gas engine, automatic transmission, 4X4, quad cab, chrome nerf bars, rear receiver hitch, AM/FM CD radio, air conditioning, cruise control, power windows (do not work, & locks, 285/70 R-17 tires, shows 179,201 mile, shows 179,201 miles. Notes: Front end NEEDS alignment, power windows DO NOT WORK. PLEASE ALLOW AT LEAST 60 DAYS FOR TITLE TRANSFER. Item Location: Portland, TN 37148 Equipment Sold "AS IS, WHERE IS": All equipment/property is sold "AS IS, WHERE IS" with no warranty or guarantees, expressed or implied, No operational assessments have been made by DPA Auctions on this item, it has been photographed ONLY.



### #142 - 1999 Trailmobile (DR7718)

1999 Trailmobile (DR7718), single axle van trailer, light panel roof HAS HOLE, rear cargo doors, 22.5 tires. Notes: This trailer has A HOLE IN THE ROOF, see pictures. PLEASE ALLOW AT LEAST 60 DAYS FOR TITLE TRANSFER. Item Location: Milan, TN 38358 Equipment Sold "AS IS, WHERE IS": All equipment/property is sold "AS IS, WHERE IS" with no warranty or guarantees, expressed or implied, No operational assessments have been made by DPA Auctions on this item, it has been photographed ONLY.



### #143 - 2016 Adams Field Loader(TR4102)

2016 Adams Field Loader(TR4102), 24" belt 24' incline 10' horizontal. Honda engine. Very little use, bought in Sept 2016. Notes: Item Location: Bryan, OH 43506 Equipment Sold "AS IS, WHERE IS": All equipment/property is sold "AS IS, WHERE IS" with no warranty or guarantees, expressed or implied, No operational assessments have been made by DPA Auctions on this item, it has been photographed ONLY.



### #144 - Rapat Model F6518 Conveyor (TR4101)

Rapat Model F6518 Conveyor (TR4101), Bulk Seed VIN: C20651/10. 18" cleated belt. 65' long. Comes with extra belt, electrical cords and on-off switch. Notes: Item Location: Chester, SD 57016 Equipment Sold "AS IS, WHERE IS": All equipment/property is sold "AS IS, WHERE IS" with no warranty or guarantees, expressed or implied, No operational assessments have been made by DPA Auctions on this item, it has been photographed ONLY.



### #145 - 1998 Adams Dry Trailer (TR4103)

1998 Adams Dry Trailer (TR4103), Daco trailer with an Adams 24 ton dry tender. Self contained, tandem axle. Notes: Augers need to be replaced. Item Location: Mott, ND 58646 Equipment Sold "AS IS, WHERE IS": All equipment/property is sold "AS IS, WHERE IS" with no warranty or guarantees, expressed or implied, No operational assessments have been made by DPA Auctions on this item, it has been photographed ONLY.



### #146 - 2004 Polar Transport Trailer (TR4104)

2004 Polar Transport Trailer (TR4104), 5000 gal, tandem axle, stainless steel, tank has been sucked in. Notes: Tank has been sucked in. PLEASE ALLOW 60 DAYS FOR TITLE TRANSFER. Item Location: Prosser, NE 68883 Equipment Sold "AS IS, WHERE IS": All equipment/property is sold "AS IS, WHERE IS" with no warranty or guarantees, expressed or implied, No operational assessments have been made by DPA Auctions on this item, it has been photographed ONLY.



### #147 - 2015 Maurer Belt Trailer (TR4105)

2015 Maurer Belt Trailer (TR4105), tandem axle, aluminum 48ft triple axel. 3 compartment, air ride suspension, new 37 hp kohler twin cylinder motor in spring of 2016, new discharge belt in spring of 2017 17ft from back of trailer to end spout, new bottom belt still in box will come, good brakes, good rubber, low miles, roll tarp. All traps and trap are remote control. Aluminum rims. Notes: Item Location: Blunt, SD 57522 Equipment Sold "AS IS, WHERE IS": All equipment/property is sold "AS IS, WHERE IS" with no warranty or guarantees, expressed or implied, No operational assessments have been made by DPA Auctions on this item, it has been photographed ONLY.



### #148 - Anhydrous Storage Tank (NP6078)

Anhydrous Storage Tank (NP6078), 1966 Trinity Steel Co., Inc. 18,000 gallon capacity, tank volume gauge, O.S. DIA 105.5, SHELL THK. .750, HEAD THK. .420, LENGTH 533, data plate, S/N 208014. Notes: This is being sold as the TANK ONLY, Corken pump, plumbing and loadout stations DO NOT SELL with this tank. This item must be dismantled and removed by February 28, 2018, NO EXCEPTIONS. Dismantle, removal and transportation is at the expense, risk and liability of the buyer. Item Location: Sublette, KS 67877 Equipment Sold "AS IS, WHERE IS": All equipment/property is sold "AS IS, WHERE IS" with no warranty or guarantees, expressed or implied, No operational assessments have been made by DPA Auctions on this item, it has been photographed ONLY.



### #149 - 2009 RBR Vector 300 (DR7695, Unit 14715)

2009 RBR Vector 300 (DR7695, Unit 14715), Cummins diesel engine, Allison automatic transmission, cab heat/air conditioning, New Leader L4000 G4 stainless steel hydraulic dry spinner box, Multiplier insert box, Raven Viper Pro controller, Raven Smartrax light bar swathing, rear view camera, AM/FM CD radio, air conditioning, 380/90R46 row crop tires, shows 5206 hours. Notes: Item Location: Huntingdon, TN 38344 Equipment Sold "AS IS, WHERE IS": All equipment/property is sold "AS IS, WHERE IS" with no warranty or guarantees, expressed or implied, No operational assessments have been made by DPA Auctions on this item, it has been photographed ONLY.



### #150 - Aluminum Sprayer Boom (NP6045)

Aluminum Sprayer Boom (NP6045), 120' aluminum boom, 5-way nozzle bodies, 15" spacing. Notes: Item Location: Tonkawa, OK 74653 Equipment Sold "AS IS, WHERE IS": All equipment/property is sold "AS IS, WHERE IS" with no warranty or guarantees, expressed or implied, No operational assessments have been made by DPA Auctions on this item, it has been photographed ONLY.



### #151 - 1996 Terra Gator 1844 Chassis (NP6039)

1996 Terra Gator 1844 Chassis (NP6039), Cat diesel engine, 18 speed transmission, heat, air conditioning, Am/Fm radio, 48x31.00-20 front tires, 1000/50R25 rear tires, shows 31,613 miles, shows 3,693 hours. Notes: Item Location: Kingfisher, OK 73750 Equipment Sold "AS IS, WHERE IS": All equipment/property is sold "AS IS, WHERE IS" with no warranty or guarantees, expressed or implied, No operational assessments have been made by DPA Auctions on this item, it has been photographed ONLY.



### #152 - Sprayer Boom (NP6050)

Sprayer Boom (NP6050), 100' boom, NO nozzles, will fit 4900 series John Deere sprayer. Notes: Item Location: Tonkawa, OK 74653 Equipment Sold "AS IS, WHERE IS": All equipment/property is sold "AS IS, WHERE IS" with no warranty or guarantees, expressed or implied, No operational assessments have been made by DPA Auctions on this item, it has been photographed ONLY.



### #153 - (4) Tires/Rims (NP6055)

(4) Tires/Rims (NP6055), (1) Michelin 445/50R22.5 tire/rim, (2) Bridgestone 445/50R22.5 tires/rims, (1) Continental 445/50R22.5 tire/rim. Notes: Item Location: Tonkawa, OK 74653 Equipment Sold "AS IS, WHERE IS": All equipment/property is sold "AS IS, WHERE IS" with no warranty or guarantees, expressed or implied, No operational assessments have been made by DPA Auctions on this item, it has been photographed ONLY.



### #154 - Sturdy-Lite Aluminum Headache Rack (NP6051)

Sturdy-Lite Aluminum Headache Rack (NP6051), Style 6886 DF NRPT. Notes: Item Location: Tonkawa, OK 74653 Equipment Sold "AS IS, WHERE IS": All equipment/property is sold "AS IS, WHERE IS" with no warranty or guarantees, expressed or implied, No operational assessments have been made by DPA Auctions on this item, it has been photographed ONLY.



---

### #155 - Aluminum Headache Rack (NP6052)

Aluminum Headache Rack (NP6052) Notes: Item Location: Tonkawa, OK 74653 Equipment Sold "AS IS, WHERE IS": All equipment/property is sold "AS IS, WHERE IS" with no warranty or guarantees, expressed or implied, No operational assessments have been made by DPA Auctions on this item, it has been photographed ONLY.



---

### #156 - Walco Truck Lift Gate (NP6053)

Walco Truck Lift Gate (NP6053), 2,000 lb capacity. Notes: Item Location: Tonkawa, OK 74653 Equipment Sold "AS IS, WHERE IS": All equipment/property is sold "AS IS, WHERE IS" with no warranty or guarantees, expressed or implied, No operational assessments have been made by DPA Auctions on this item, it has been photographed ONLY.



---

### #157 - Air Tag Axle (NP6054)

Air Tag Axle (NP6054), 235/75R17.5 tires. Notes: Item Location: Tonkawa, OK 74653 Equipment Sold "AS IS, WHERE IS": All equipment/property is sold "AS IS, WHERE IS" with no warranty or guarantees, expressed or implied, No operational assessments have been made by DPA Auctions on this item, it has been photographed ONLY.



---

### #158 - 1995 Terra Gator 1803 Dry Floater (PZ7839)

1995 Terra Gator 1803 Dry Floater (PZ7839), 275 hp diesel engine, Allison automatic transmission, heat, New Leader 3020GT lime/dry spreader box, twin spinner, all hydraulic, 1000/50R25 tires, shows 6392 hours, 62,400 miles. Notes: Radiator is leaking, no monitor. Item Location: Yorktown, IN 47396 Equipment Sold "AS IS, WHERE IS": All equipment/property is sold "AS IS, WHERE IS" with no warranty or guarantees, expressed or implied, No operational assessments have been made by DPA Auctions on this item, it has been photographed ONLY.



---

### #159 - 2014 John Deere 8370R MFWD Tractor (NP6096)

2014 John Deere 8370R MFWD Tractor (NP6096), John Deere PowerTech PSS 9.0L 6 cylinder Tier 4 diesel engine (370HP), AutoPower IVT transmission, premium command view cab with active seat, premium lighting, premium radio package with XM radio, ILS, 5 rear remote selective control valves with electro hydraulic controls, premium couplers and high pressure relief levers, category 4 adjustable swinging drawbar, 18,700lb lift capacity 3 point hitch, John Deere independent link suspension with hydraulic differential lock, foot operated speed control, cold weather start kit, 480/80R50 rear duals, 420/85R34 front duals, front weights, single 10" CommandCenter Display, shows 1,209 hours. Notes: Item Location: Baileyville, KS 66404 Equipment Sold "AS IS, WHERE IS": All equipment/property is sold "AS IS, WHERE IS" with no warranty or guarantees, expressed or implied, No operational assessments have been made by DPA Auctions on this item, it has been photographed ONLY.



---

### #160 - 2009 RBR Vector 300 (DR7710, Unit 27574)

2009 RBR Vector 300 (DR7710, Unit 27574), Cummins diesel engine, Allison automatic transmission, cab heat/air conditioning, New Leader L4000 G4 stainless steel hydraulic dry spinner box, Multiplier insert box, electric roll over tarp, Raven Viper Pro controller, light bar swathing, rear view camera, AM/FM CD radio, air conditioning, 650/65R-38 floatation tires, shows 5454 hours. Notes: Interior is rough, clutch needs adjusted, cracked windshield (not in line of site), contact seller for more details. Item Location: Portland, TN 37148 Equipment Sold "AS IS, WHERE IS": All equipment/property is sold "AS IS, WHERE IS" with no warranty or guarantees, expressed or implied, No operational assessments have been made by DPA Auctions on this item, it has been photographed ONLY.



---

### #161 - 2000 International Eagle Pro Sleeper Truck (NP6084)

2000 International Eagle Pro Sleeper Truck (NP6084), Cummins N14Plus diesel engine, 10 speed transmission, heat, air conditioning, Am/Fm radio, tandem axle, air ride suspension, 5th wheel, wet kit, fuel heater, 285/75R24.5 tires, tires good to excellent, shows 909,644 miles. Notes: Interior is rough, clutch needs adjusted, cracked windshield (not in line of site), contact seller for more details. Item Location: Sublette, KS 67877 Equipment Sold "AS IS, WHERE IS": All equipment/property is sold "AS IS, WHERE IS" with no warranty or guarantees, expressed or implied, No operational assessments have been made by DPA Auctions on this item, it has been photographed ONLY.



---

### #162 - 1999 International 4700 (RMC217, Unit 2684)

1999 International 4700 (RMC217, Unit 2684), DT466 diesel engine, 6 speed transmission, single axle, air brakes, 16' steel flatbed, side winch straps, AM/FM cassette radio, air conditioning, 11R22.5 tires. Notes: Item Location: Greenwood, MS 38930 Equipment Sold "AS IS, WHERE IS": All equipment/property is sold "AS IS, WHERE IS" with no warranty or guarantees, expressed or implied, No operational assessments have been made by DPA Auctions on this item, it has been photographed ONLY.



### #163 - 2000 Mack CH613 (RMC218, Unit 1530)

2000 Mack CH613 (RMC218, Unit 1530), Mack diesel engine, 7 speed transmission, tandem axle full screw, air ride suspension, air brakes, 24' dry van box, rear cargo doors, AM/FM cassette radio, air conditioning, 22.5 tires, shows 432,770 miles. Notes: Item Location: Greenwood, MS 38930 Equipment Sold "AS IS, WHERE IS": All equipment/property is sold "AS IS, WHERE IS" with no warranty or guarantees, expressed or implied, No operational assessments have been made by DPA Auctions on this item, it has been photographed ONLY.



### #166 - John Deere 2630 GreenStar 3 Display (NP6082)

John Deere 2630 GreenStar 3 Display (NP6082), basics - activated, Autotrac SF2 - activated, Section Control - activated, display has 773 hours on it and is in extremely GOOD condition, always stored inside when not being used, with John Deere StarFire 3000 receiver, SF1 - Accuracy. Notes: Item Location: Fort Dodge, IA 50501 Equipment Sold "AS IS, WHERE IS": All equipment/property is sold "AS IS, WHERE IS" with no warranty or guarantees, expressed or implied, No operational assessments have been made by DPA Auctions on this item, it has been photographed ONLY.



### #167 - John Deere Original GreenStar Display (NP6083)

John Deere Original GreenStar Display (NP6083), w/ Mobile Processor (Keycard), keycard has the following product keys unlocked: Parallel Tracking, Yield Mapping, Field Documentation Basics/Air Cart/Sprayer & Connect, original StarFire receiver w/ TCM (Terrain Compensation Module) for Autotrac Feature, display/processor/keycard and receiver are ALL in excellent condition and were stored inside when not being used. Notes: Item Location: Fort Dodge, IA 50501 Equipment Sold "AS IS, WHERE IS": All equipment/property is sold "AS IS, WHERE IS" with no warranty or guarantees, expressed or implied, No operational assessments have been made by DPA Auctions on this item, it has been photographed ONLY.



### #168 - (2) Alliance Flotation Tires/Rims (NP6080)

(2) Alliance Flotation Tires/Rims (NP6080), Model 154D/157AB High Speed Rated, Size 600/65R28, 12 bolt rim pattern, 75-80% tread, came off John Deere 4700 self-propelled sprayer, can be used on multiple other machines. Notes: Item Location: Fort Dodge, IA 50501 Equipment Sold "AS IS, WHERE IS": All equipment/property is sold "AS IS, WHERE IS" with no warranty or guarantees, expressed or implied, No operational assessments have been made by DPA Auctions on this item, it has been photographed ONLY.



### #169 - 2013 Terra Gator TG8400 Liquid Floater (NP6040)

2013 Terra Gator TG8400 Liquid Floater (NP6040), SisuTronic diesel engine, CVT transmission, heat, air conditioning, Am/Fm CD radio, 1,800 gallon stainless steel liquid system, 80' Benson boom, self leveling boom, single floor and 3-way nozzles, foam marker, 55 gallon stainless steel foam marker tank, top poly rinse tank, stainless steel chemical inductor, auto steer, Michelin Mega X Bib 1000/50R25 rear tires, Prime-X 48x31.00-20 front tires, GPS, lightbar, Raven Viper Pro monitor, shows 1,730 hours. Notes: Seller will pay shipping up to \$2000.00. Item Location: Waukomis, OK 73773 Equipment Sold "AS IS, WHERE IS": All equipment/property is sold "AS IS, WHERE IS" with no warranty or guarantees, expressed or implied, No operational assessments have been made by DPA Auctions on this item, it has been photographed ONLY.



### #171 - 2005 Case IH 4260 (DR7602)

2005 Case IH 4260 (DR7602), diesel engine, hydrostatic drive, cab heat/air conditioning, 1200 gallon stainless steel liquid system, 90' boom, Raven Viper Pro controller, Aim Command, top mounted poly rinse tank, stainless steel chemical inductor, AM/FM CD radio, Michelin 380/90R46 row crop tires, shows 5876 hours. Notes: Item Location: Brodhead, WI 53520 Equipment Sold "AS IS, WHERE IS": All equipment/property is sold "AS IS, WHERE IS" with no warranty or guarantees, expressed or implied, No operational assessments have been made by DPA Auctions on this item, it has been photographed ONLY.



### #172 - Trinity 3200 Gallon LP Tank (DR7561)

Trinity 3200 Gallon LP Tank (DR7561), 2002 manway access, magnetic float gauge, good data tag w/ NB number. Notes: Item Location: Jefferson, WI 53549 Equipment Sold "AS IS, WHERE IS": All equipment/property is sold "AS IS, WHERE IS" with no warranty or guarantees, expressed or implied, No operational assessments have been made by DPA Auctions on this item, it has been photographed ONLY.



### #173 - 2010 John Deere 4730 Sprayer (NP6006)

2010 John Deere 4730 Sprayer (NP6006), John Deere diesel engine, hydrostatic transmission, heat, air conditioning, Am/Fm radio, instructional seat, 800 gallon poly liquid system, 100' boom, 20" spacing, auto leveling, section control, 5-way nozzle bodies, right and left fence row tips, standard pump (NEW), stainless steel chemical inductor, 2" fill (parts to convert to 3" included), 380/90R46 tires, back 40%, front 30%, fenders, John Deere 2630 monitor, StarFire 3000 receiver, manual tread adjust, traction control, rear view camera, tow control valve, on board air with auto air level, shows 2,560 hours. Notes: New batteries. Item Location: Berger, MO 63014 Equipment Sold "AS IS, WHERE IS": All equipment/property is sold "AS IS, WHERE IS" with no warranty or guarantees, expressed or implied, No operational assessments have been made by DPA Auctions on this item, it has been photographed ONLY.





---

### #174 - 2003 Terra Gator 8103 (DR7559)

2003 Terra Gator 8103 (DR7559), John Deere diesel engine, Terra Shift transmission, Ag Chem air spreader box, 60' booms, Raven controller, Raven GPS swathing, electric roll tarp, AM/FM cassette radio, air conditioning, 66X43.00-25 tires, shows 38,994 miles, 3339 hours. Notes: This floater has a NEW front fork. Item Location: Waupun, WI 53963 Equipment Sold "AS IS, WHERE IS": All equipment/property is sold "AS IS, WHERE IS" with no warranty or guarantees, expressed or implied, No operational assessments have been made by DPA Auctions on this item, it has been photographed ONLY.



---

### #175 - Swinger 2000 (DR7557)

Swinger 2000 (DR7557), diesel engine, hydrostatic drive, OROPS, front bucket, shows 5955 hours. Notes: Item Location: Waupun, WI 53963 Equipment Sold "AS IS, WHERE IS": All equipment/property is sold "AS IS, WHERE IS" with no warranty or guarantees, expressed or implied, No operational assessments have been made by DPA Auctions on this item, it has been photographed ONLY.



---

### #177 - 2008 John Deere 1990CCS Air Seeder (NP6101)

2008 John Deere 1990CCS Air Seeder (NP6101), 40' x 15" air seeder, low acres, mounted hydraulic fill brush auger, works to load and unload seed tank, electronic population rate control, smooth gauge wheel, large seed (soybean) meter roller, monitor all run seed counting and blockage, single 31x31.5-15 hi-flotation tires, SeedStar monitor singulation, 8400 acres. Notes: Seller has owned since new, always shedded. Item Location: Baileyville, KS 66404 Equipment Sold "AS IS, WHERE IS": All equipment/property is sold "AS IS, WHERE IS" with no warranty or guarantees, expressed or implied, No operational assessments have been made by DPA Auctions on this item, it has been photographed ONLY.



---

### #178 - 1998 Loral (DR7556)

1998 Loral (DR7556), DT diesel engine, Allison automatic transmission, New Leader L3020 G4 stainless steel dry spinner box, Raven Viper Pro controller, cruise control, air brakes, shows 80,269 miles, 7740 hours. Notes: Right side of spinner box does have damage on top rail. This machine had a newer cab in 2012. Item Location: Marshfield, WI 54404 Equipment Sold "AS IS, WHERE IS": All equipment/property is sold "AS IS, WHERE IS" with no warranty or guarantees, expressed or implied, No operational assessments have been made by DPA Auctions on this item, it has been photographed ONLY.



---

### #179 - 2009 Bobcat S205 (DR7563, Unit 3032)

2009 Bobcat S205 (DR7563, Unit 3032), diesel engine, hydrostatic drive, quick tach front bucket & forks, auxillary hydraulic outlets, cab w/heat & air conditioning, shows 1998 hours. Notes: Item Location: Marshall, WI 53559 Equipment Sold "AS IS, WHERE IS": All equipment/property is sold "AS IS, WHERE IS" with no warranty or guarantees, expressed or implied, No operational assessments have been made by DPA Auctions on this item, it has been photographed ONLY.



---

### #180 - Aluminum Sprayer Boom (NP6046)

Aluminum Sprayer Boom (NP6046), 120' aluminum boom, 5-way nozzle bodies, 20" spacing. Notes: Item Location: Tonkawa, OK 74653 Equipment Sold "AS IS, WHERE IS": All equipment/property is sold "AS IS, WHERE IS" with no warranty or guarantees, expressed or implied, No operational assessments have been made by DPA Auctions on this item, it has been photographed ONLY.



---

### #181 - Aluminum Sprayer Boom (NP6047)

Aluminum Sprayer Boom (NP6047), 120' aluminum boom, 5-way nozzle bodies, 20" spacing. Notes: Item Location: Tonkawa, OK 74653 Equipment Sold "AS IS, WHERE IS": All equipment/property is sold "AS IS, WHERE IS" with no warranty or guarantees, expressed or implied, No operational assessments have been made by DPA Auctions on this item, it has been photographed ONLY.



---

### #182 - 2014 John Deere 4730 Sprayer (NP6042)

2014 John Deere 4730 Sprayer (NP6042), John Deere diesel engine, hydrostatic transmission, heat, air conditioning, Am/Fm CD radio, 800 gallon stainless steel liquid system, 120' aluminum boom, 5-way nozzle bodies, stainless steel chemical inductor, 380/90R46 tires, John Deere GreenStar 3 monitor, GreenStar Ready, shows 736 hours. Notes: Seller has all maintenance records on file, contact seller for more details. Item Location: Tonkawa, OK 74653 Equipment Sold "AS IS, WHERE IS": All equipment/property is sold "AS IS, WHERE IS" with no warranty or guarantees, expressed or implied, No operational assessments have been made by DPA Auctions on this item, it has been photographed ONLY.



### #183 - RBR Vector 300 (DR7662, Unit 14909)

2009 RBR Vector 300 (DR7662, Unit 14909), Cummins diesel engine, Allison automatic transmission, air ride suspension, New Leader L4000 G4 stainless steel dry spinner box, Raven Viper Pro controller, Raven Smartrax light bar swathing, rear view camera, AM/FM CD radio, cab heat/air conditioning, 650/65R38 flotation tires, shows 4570 hours. Notes: Item Location: Hardin, KY 42048 Equipment Sold "AS IS, WHERE IS": All equipment/property is sold "AS IS, WHERE IS" with no warranty or guarantees, expressed or implied, No operational assessments have been made by DPA Auctions on this item, it has been photographed ONLY.



### #186 - 2006 Ford F150, (DR7661, Unit 21787)

2006 Ford F150, (DR7661, Unit 21787), gas engine, automatic transmission, extended cab, 2 wheel drive, rear receiver hitch, AM/FM radio, air conditioning, cruise control, 265/70R16 tires, shows 260,256 miles. Notes: Fuel tank & tool box in box DO NOT SELL. PLEASE ALLOW AT LEAST 60 DAYS FOR TITLE TRANSFER. Item Location: Hardin, KY 42048 Equipment Sold "AS IS, WHERE IS": All equipment/property is sold "AS IS, WHERE IS" with no warranty or guarantees, expressed or implied, No operational assessments have been made by DPA Auctions on this item, it has been photographed ONLY.



### #187 - Double Nurse Tank (DR7713)

Double Nurse Tank (DR7713), (2) 1000 gallon Nh3 tanks, top front fill, data tag, fold down access ladder, Duo Lift 5th wheel style running gear, wired with lights, 385/65R22.5 tires. Notes: Item Location: Crystal Lake, IL 60012 Equipment Sold "AS IS, WHERE IS": All equipment/property is sold "AS IS, WHERE IS" with no warranty or guarantees, expressed or implied, No operational assessments have been made by DPA Auctions on this item, it has been photographed ONLY.



### #188 - Double Nurse Tank (DR7714)

Double Nurse Tank (DR7714), (2) 1000 gallon Nh3 tanks, top front fill, data tag, fold down access ladder, Duo Lift 5th wheel style running gear, wired with lights, 385/65R22.5 tires. Notes: Item Location: Crystal Lake, IL 60012 Equipment Sold "AS IS, WHERE IS": All equipment/property is sold "AS IS, WHERE IS" with no warranty or guarantees, expressed or implied, No operational assessments have been made by DPA Auctions on this item, it has been photographed ONLY.



### #189 - Dry Fertilizer Building (DR7717)

Dry Fertilizer Building (DR7717), dry fertilizer storage building to BE TORN DOWN, 80'X60" wood frame vinyl sided structure w/48'X24' loadout area included, stainless steel receiving leg or dry blender IS NOT INCLUDED. Notes: Dismantle & liability are the sole responsibility of the buyer. Building needs to be torn down by May 1, 2018. Buyer also must provide proof of insurance to CPS. Stainless steel leg and blender ARE NOT INCLUDED. Item Location: Harmony, MN 55939 Equipment Sold "AS IS, WHERE IS": All equipment/property is sold "AS IS, WHERE IS" with no warranty or guarantees, expressed or implied, No operational assessments have been made by DPA Auctions on this item, it has been photographed ONLY.



### #190 - Granular Bins (DR7553)

Granular Bins (DR7553), (2) dry granular bins, w/hydraulic drive augers. Notes: Item Location: Harmony, MN 55939 Equipment Sold "AS IS, WHERE IS": All equipment/property is sold "AS IS, WHERE IS" with no warranty or guarantees, expressed or implied, No operational assessments have been made by DPA Auctions on this item, it has been photographed ONLY.



### #192 - 2010 RoGator 1184 Sprayer (NP6041)

2010 RoGator 1184 Sprayer (NP6041), Cat C-7 diesel engine, 4 speed hydrostatic transmission, heat, air conditioning, Am/Fm CD radio, 1,100 gallon stainless steel liquid system (S/N LAGCA1184JNVSE1026), 100' boom, 3-way and 5-way nozzle bodies, auto boom height, 30.5 gallon stainless steel foam marker tank, top poly rinse tank, poly chemical inductor, HYPRO stainless steel pump, Firestone 380/90R46 tires, auto steer, Raven SmarTrax, lightbar, Raven Viper Pro, shows 3,035 hours. Notes: NEW batteries, NEW stainless steel pump, field ready. Seller will pay shipping up to \$2000.00. Item Location: Waukomis, OK 73773 Equipment Sold "AS IS, WHERE IS": All equipment/property is sold "AS IS, WHERE IS" with no warranty or guarantees, expressed or implied, No operational assessments have been made by DPA Auctions on this item, it has been photographed ONLY.



### #193 - 2012 Hardi Commander 6600, (DR7619)

2012 Hardi Commander 6600, (DR7619), 1850 gallon poly liquid tank, Terraforce updated 120' hydraulic fold boom, Norac US5 all terrain boom, 3 way nozzle bodies, 6500 controller, 1000 PTO pump, 380X50 row crop tires. Notes: Item Location: North Branch, MN 55056 Equipment Sold "AS IS, WHERE IS": All equipment/property is sold "AS IS, WHERE IS" with no warranty or guarantees, expressed or implied, No operational assessments have been made by DPA Auctions on this item, it has been photographed ONLY.



### #194 - 1994 International 4900 (DR7676)

1994 International 4900 (DR7676), DT 466 diesel engine, 5 speed transmission, 2 speed rear end, transmission, air brakes, stainless steel dry spinner box, foam marker, bull wheel ground drive web chain, air conditioning, 385/65R22.5 front tires, 48X31.00-20 rear flotation tires, shows 198,432 miles. Notes: Item Location: Selmer, TN 38375 Equipment Sold "AS IS, WHERE IS": All equipment/property is sold "AS IS, WHERE IS" with no warranty or guarantees, expressed or implied, No operational assessments have been made by DPA Auctions on this item, it has been photographed ONLY.



### #195 - Ag Systems Super Treater (DR7670)

Ag Systems Super Treater (DR7670), portable jump auger, used for seed treating or dry fertilizer impregnation, Honda gas engine w/electric start, control panel. Notes: Item Location: Selmer, TN 38375 Equipment Sold "AS IS, WHERE IS": All equipment/property is sold "AS IS, WHERE IS" with no warranty or guarantees, expressed or implied, No operational assessments have been made by DPA Auctions on this item, it has been photographed ONLY.



### #196 - Ag Systems Super Treater (DR7671)

Ag Systems Super Treater (DR7671), portable jump auger, used for seed treating or dry fertilizer impregnation, Honda gas engine w/electric start, control panel. Notes: Item Location: Selmer, TN 38375 Equipment Sold "AS IS, WHERE IS": All equipment/property is sold "AS IS, WHERE IS" with no warranty or guarantees, expressed or implied, No operational assessments have been made by DPA Auctions on this item, it has been photographed ONLY.



### #197 - 2013 John Deere 4830 Sprayer (NP6043)

2013 John Deere 4830 Sprayer (NP6043), John Deere diesel engine, hydrostatic transmission, heat, air conditioning, Am/Fm CD radio, 1,000 gallon stainless steel liquid system, 120' aluminum boom, 5-way nozzle bodies, stainless steel chemical inductor, 380/90R46 tires, John Deere GreenStar 3 monitor, GreenStar Ready, shows 1,462 hours. Notes: Seller has all maintenance records on file, contact seller for more details. Item Location: Tonkawa, OK 74653 Equipment Sold "AS IS, WHERE IS": All equipment/property is sold "AS IS, WHERE IS" with no warranty or guarantees, expressed or implied, No operational assessments have been made by DPA Auctions on this item, it has been photographed ONLY.



### #198 - Aluminum Sprayer Boom (NP6048)

Aluminum Sprayer Boom (NP6048), 120' aluminum boom, 5-way nozzle bodies, 15" spacing. Notes: Item Location: Tonkawa, OK 74653 Equipment Sold "AS IS, WHERE IS": All equipment/property is sold "AS IS, WHERE IS" with no warranty or guarantees, expressed or implied, No operational assessments have been made by DPA Auctions on this item, it has been photographed ONLY.



### #199 - Aluminum Sprayer Boom (NP6049)

Aluminum Sprayer Boom (NP6049), 120' aluminum boom, 5-way nozzle bodies, 20" spacing. Notes: Item Location: Tonkawa, OK 74653 Equipment Sold "AS IS, WHERE IS": All equipment/property is sold "AS IS, WHERE IS" with no warranty or guarantees, expressed or implied, No operational assessments have been made by DPA Auctions on this item, it has been photographed ONLY.



### #200 - 2013 Kay 12,000 Gallon Horizontal Fuel Tank (KMK415)

2013 Kay 12,000 Gallon Horizontal Fuel Tank (KMK415), dual wall, Fill-Rite pump, Fill-Rite model FR902RU remote dispenser, saddles, manufactured 4/13, shows approximately 47,000 gal. pumped. Notes: Dismantle, removal and transportation is at the expense, risk and liability of the buyer. Item Location: Gowrie, IA 50543 Equipment Sold "AS IS, WHERE IS": All equipment/property is sold "AS IS, WHERE IS" with no warranty or guarantees, expressed or implied, No operational assessments have been made by DPA Auctions on this item, it has been photographed ONLY.



### #201 - 2009 John Deere 8430 Tractor (NP6102)

2009 John Deere 8430 Tractor (NP6102), John Deere diesel engine, powershift transmission, heat, air conditioning, Am/Fm radio, ILS front end, guidance ready, active seat, 380/85R34 front duals, 480/80R46 rear duals, tires in excellent condition, 4 SCV's, heavy category 4 drawbar, ILS, quick hitch, shows 4,005 hours. Notes: Tractor has 4,005 hours and is currently being used, hours will be updated before the sale date. Item Location: Baileyville, KS 66404 Equipment Sold "AS IS, WHERE IS": All equipment/property is sold "AS IS, WHERE IS" with no warranty or guarantees, expressed or implied, No operational assessments have been made by DPA Auctions on this item, it has been photographed ONLY.



### #202 - (8) Yetter Spiked Closing Wheels (NP6111)

(8) Yetter Spiked Closing Wheels (NP6111), came off John Deere planter. Notes: Item Location: Baileyville, KS 66404 Equipment Sold "AS IS, WHERE IS": All equipment/property is sold "AS IS, WHERE IS" with no warranty or guarantees, expressed or implied, No operational assessments have been made by DPA Auctions on this item, it has been photographed ONLY.



### #203 - John Deere 960 Field Cultivator (NP6109)

John Deere 960 Field Cultivator (NP6109), 30' width, 3 section, hydraulic wings, new new tires and mostly near new shovels. Notes: Item Location: Baileyville, KS 66404 Equipment Sold "AS IS, WHERE IS": All equipment/property is sold "AS IS, WHERE IS" with no warranty or guarantees, expressed or implied, No operational assessments have been made by DPA Auctions on this item, it has been photographed ONLY.



### #204 - John Deere 1010 Field Cultivator (NP6110)

John Deere 1010 Field Cultivator (NP6110), 28' width, three bar coil tine harrow included but not attached, was used to apply NH3. Notes: Item Location: Baileyville, KS 66404 Equipment Sold "AS IS, WHERE IS": All equipment/property is sold "AS IS, WHERE IS" with no warranty or guarantees, expressed or implied, No operational assessments have been made by DPA Auctions on this item, it has been photographed ONLY.



### #205 - (12) Seed Boxes with Meters (NP6115)

(12) Seed Boxes with Meters (NP6115), these came off a John Deere 1770 planter, the meters have been updated to Precision Planting eset meters, boxes are in excellent condition. Notes: Item Location: Baileyville, KS 66404 Equipment Sold "AS IS, WHERE IS": All equipment/property is sold "AS IS, WHERE IS" with no warranty or guarantees, expressed or implied, No operational assessments have been made by DPA Auctions on this item, it has been photographed ONLY.



### #206 - 2004 Kenworth T600 Liquid Nurse Truck (NP6131)

2004 Kenworth T600 Liquid Nurse Truck (NP6131), Cat C-15 diesel engine, 475HP, 10 speed transmission, heat, air conditioning, Am/Fm radio, tandem axle, stabalized air ride suspension, NEW 2017 3,200 gallon stainless steel liquid tank, full sump, 3" side discharge, ladder, 1.5" site gauge, full fenders, 22.5 tires (NEW fronts), 522,000 actual ECM miles. Notes: ONE OWNER truck, seller has all maintenance records on truck since new. Item Location: Coal Valley, IL 61240 Equipment Sold "AS IS, WHERE IS": All equipment/property is sold "AS IS, WHERE IS" with no warranty or guarantees, expressed or implied, No operational assessments have been made by DPA Auctions on this item, it has been photographed ONLY.



### #207 - 2006 Case IH 3210 (DR7570)

2006 Case IH 3210 (DR7570), Cummins diesel engine, hydrostatic drive, New Leader L3020 G4 dry spinner box, Raven Viper Pro controller, roll over tarp, cab heat/air conditioning, AM/FM CD radio, rear view camera, shows 3375 hours, TIRES IN PICTURE DO NOT SELL, comes with 46" row crop tires. Notes: This machine sells with 46" row crop tires NOT tires pictured. Item Location: Jefferson, WI 53549 Equipment Sold "AS IS, WHERE IS": All equipment/property is sold "AS IS, WHERE IS" with no warranty or guarantees, expressed or implied, No operational assessments have been made by DPA Auctions on this item, it has been photographed ONLY.



### #208 - Two (2) Squirrel Cage Fans (KMK425)

Two (2) Squirrel Cage Fans (KMK425), 26" wide fans, 20" inlet on both sides, outlet is 31" x 31", unit has 1 11/16" shaft and a 16", 4 groove, B section pulley. Notes: Item Location: Arthur, IL 61911 Equipment Sold "AS IS, WHERE IS": All equipment/property is sold "AS IS, WHERE IS" with no warranty or guarantees, expressed or implied, No operational assessments have been made by DPA Auctions on this item, it has been photographed ONLY.



### #209 - Roach 22' Conveyor (KMK424)

Roach 22' Conveyor (KMK424), Roach Manufacturing, 24" width, 22' length, crescent top belt, no motor. Notes: Item Location: Arthur, IL 61911 Equipment Sold "AS IS, WHERE IS": All equipment/property is sold "AS IS, WHERE IS" with no warranty or guarantees, expressed or implied, No operational assessments have been made by DPA Auctions on this item, it has been photographed ONLY.



### #210 - Parker Weigh Wagon (DR7672)

Parker Weigh Wagon (DR7672), single axle, overhead auger, self contained hydraulic w/gas engine, needs orbit motor for up auger ITS GONE, Weigh Tronix scale w/digital read head. Notes: Up auger ORBIT MOTOR IS MISSING. Item Location: Selmer, TN 38375 Equipment Sold "AS IS, WHERE IS": All equipment/property is sold "AS IS, WHERE IS" with no warranty or guarantees, expressed or implied, No operational assessments have been made by DPA Auctions on this item, it has been photographed ONLY.





### #211 - Neco Seed Cleaner (DR7673)

Neco Seed Cleaner (DR7673), portable seed cleaner, single axle cart, electric drive motor. Notes: Item Location: Selmer, TN 38375 Equipment Sold "AS IS, WHERE IS": All equipment/property is sold "AS IS, WHERE IS" with no warranty or guarantees, expressed or implied, No operational assessments have been made by DPA Auctions on this item, it has been photographed ONLY.



### #212 - 1992 International 4700 (DR7675)

1992 International 4700 (DR7675), DT466 diesel engine, 5 speed transmission, single axle, 24' van body, rear roll up door, light panel roof, pull up ramp, AM/FM cassette radio, air conditioning, 22.5 tires, shows 46,983 miles. Notes: Item Location: Selmer, TN 38375 Equipment Sold "AS IS, WHERE IS": All equipment/property is sold "AS IS, WHERE IS" with no warranty or guarantees, expressed or implied, No operational assessments have been made by DPA Auctions on this item, it has been photographed ONLY.



### #213 - 2011 GMC 1500 (DR7674)

2011 GMC 1500 (DR7674), gas engine automatic transmission, crew cab, 4x4, Z71 package, rear receiver hitch, AM/FM CD radio, air conditioning, cruise control, power windows & locks, 285/70R17 tires, shows 217,488 miles. Notes: Item Location: Selmer, TN 38375 Equipment Sold "AS IS, WHERE IS": All equipment/property is sold "AS IS, WHERE IS" with no warranty or guarantees, expressed or implied, No operational assessments have been made by DPA Auctions on this item, it has been photographed ONLY.



### #214 - 2009 RoGator 1084SS Sprayer (PZ7907)

2009 RoGator 1084SS Sprayer (PZ7907), Cat diesel engine, hydrostatic transmission, air conditioning, heat, Am/Fm CD stereo, 1080 gallon stainless steel liquid system (S/N LAGCASSC8HNUS11300), 100' boom, foam marker, stainless steel foam marker tank, top poly rinse tank, Firestone 380/90R46 tires, Raven SmarTrax, Raven monitor, shows 4347 hours. Notes: Item Location: Carlyle, IL 62231 Equipment Sold "AS IS, WHERE IS": All equipment/property is sold "AS IS, WHERE IS" with no warranty or guarantees, expressed or implied, No operational assessments have been made by DPA Auctions on this item, it has been photographed ONLY.



### #215 - 2013 John Deere 4730 Sprayer (NP6056)

2013 John Deere 4730 Sprayer (NP6056), John Deere diesel engine, hydrostatic transmission, heat, air conditioning, Am/Fm CD radio, 800 gallon stainless steel liquid system, 100' aluminum boom, 5-way nozzle bodies, stainless steel chemical inductor, 380/90R46 tires, John Deere GreenStar 3 monitor, GreenStar Ready, shows 733 hours. Notes: This machine will be sold with 100' Aluminum Boom (shown in first 6 pictures). Seller has all maintenance records on file, contact seller for more details. Item Location: Tonkawa, OK 74653 Equipment Sold "AS IS, WHERE IS": All equipment/property is sold "AS IS, WHERE IS" with no warranty or guarantees, expressed or implied, No operational assessments have been made by DPA Auctions on this item, it has been photographed ONLY.



### #216 - Flotation Tires (PZ7908)

Flotation Tires (PZ7908) 4 - Continental Contract AC65 650/65R38 (1 - is a SVT), flotation tires & rims. Notes: Item Location: Carlyle, IL 62231 Equipment Sold "AS IS, WHERE IS": All equipment/property is sold "AS IS, WHERE IS" with no warranty or guarantees, expressed or implied, No operational assessments have been made by DPA Auctions on this item, it has been photographed ONLY.



### #217 - 2005 Case IH 3200 (DR7555)

2005 Case IH 3200 (DR7555), diesel engine, hydrostatic drive, New Leader L3020 G4 stainless steel dry spinner box, belt/chain, Raven Viper Pro controller, ligh bar swathing, automatic chain oiler, 380/90R46 row crop tires, shows 3086 hours. Notes: Item Location: Marshfield, WI 54404 Equipment Sold "AS IS, WHERE IS": All equipment/property is sold "AS IS, WHERE IS" with no warranty or guarantees, expressed or implied, No operational assessments have been made by DPA Auctions on this item, it has been photographed ONLY.



### #218 - 2004 Case IH 4410 (DR7562, Unit 22583)

2004 Case IH 4410 (DR7562, Unit 22583), diesel engine, hydrostatic drive, 1200 gallon stainless steel liquid tank, 60/90' boom, Raven Viper Pro controller, AIM Command system, rear view camera, saddle mount poly rinse tank, AM/FM cassette radio, air conditioning, shows 5955 hours. Notes: Tires seen in pictures DO NOT SELL with this machine. It sells with 46" row crops. Item Location: Marshall, WI 53559 Equipment Sold "AS IS, WHERE IS": All equipment/property is sold "AS IS, WHERE IS" with no warranty or guarantees, expressed or implied, No operational assessments have been made by DPA Auctions on this item, it has been photographed ONLY.



### #219 - 2008 Hagie STS14 Sprayer (PZ7957)

2008 Hagie STS14 Sprayer (PZ7957), diesel engine, hydrostatic transmission, air conditioning, heat, Am/Fm CD stereo, 1400 gallon stainless steel liquid system, 120' boom, foam marker, stainless steel foam marker tank, top side poly rinse tank, Good Year Super Traction Radial DT800 380/90R54 tires, Norac UC4 Total control, Ag Leader monitor, shows 2701 hours. Notes: Item Location: Fairbank, IA 50629 Equipment Sold "AS IS, WHERE IS": All equipment/property is sold "AS IS, WHERE IS" with no warranty or guarantees, expressed or implied, No operational assessments have been made by DPA Auctions on this item, it has been photographed ONLY.



### #220 - Nissan CPJ02A25PV Forklift (DL179)

Nissan CPJ02A25PV Forklift (DL179), new water pump, 9,720 hours. Notes: Runs, but engine misses a little. Also has some hydraulic leaks. Reason for selling is company is switching to all electric forklifts. Item Location: Boone, IA 50036 Equipment Sold "AS IS, WHERE IS": All equipment/property is sold "AS IS, WHERE IS" with no warranty or guarantees, expressed or implied, No operational assessments have been made by DPA Auctions on this item, it has been photographed ONLY.



### #221 - Nissan CPJ02A25V Forklift (DL180)

Nissan CPJ02A25V Forklift (DL180), 12,310 hours. Notes: Hydraulic leaks. Forklift runs but has a miss. Reason for selling is company is switching to all electric forklifts. Item Location: Boone, IA 50036 Equipment Sold "AS IS, WHERE IS": All equipment/property is sold "AS IS, WHERE IS" with no warranty or guarantees, expressed or implied, No operational assessments have been made by DPA Auctions on this item, it has been photographed ONLY.



### #222 - Nissan CPJ02A25PV Forklift (DL181)

Nissan CPJ02A25PV Forklift (DL181), 9,063 hours. Notes: Hydraulic leaks. Forklift runs but has a miss. Reason for selling is company is switching to all electric forklifts. Item Location: Boone, IA 50036 Equipment Sold "AS IS, WHERE IS": All equipment/property is sold "AS IS, WHERE IS" with no warranty or guarantees, expressed or implied, No operational assessments have been made by DPA Auctions on this item, it has been photographed ONLY.



### #223 - Nissan KCPH01A15V Forklift (DL182)

Nissan KCPH01A15V Forklift (DL182), 9,830 hours. Notes: Hydraulic leaks. Forklift runs but has a miss. Reason for selling is company is switching to all electric forklifts. Item Location: Boone, IA 50036 Equipment Sold "AS IS, WHERE IS": All equipment/property is sold "AS IS, WHERE IS" with no warranty or guarantees, expressed or implied, No operational assessments have been made by DPA Auctions on this item, it has been photographed ONLY.



### #224 - 1987 IHC Dry Tender Truck (PZ7914, Unit 45924)

1987 IHC Dry Tender Truck (PZ7914, Unit 45924), Cummins diesel engine, manual transmission, heat, tandem axle, full screw, Adams 16 ton stainless steel dry tender box, rear discharge auger, roll over tarp, 11R24.5 front tires, 285/75R24.5 rear tires, shows 912,463 miles. Notes: PLEASE ALLOW AT LEAST 60 DAYS FOR TITLE TRANSFER. Item Location: Nokomis, IL 62075 Equipment Sold "AS IS, WHERE IS": All equipment/property is sold "AS IS, WHERE IS" with no warranty or guarantees, expressed or implied, No operational assessments have been made by DPA Auctions on this item, it has been photographed ONLY.



### #225 - Adams Dry Tender Box (PZ7820)

Adams Dry Tender Box (PZ7820), Adams 16 ton stainless steel dry tender box, rear discharge auger, all hydraulic, roll over tarp. Notes: Auger is out of discharge tube, running gear NOT included. Item Location: Morrisonville, IL 62546 Equipment Sold "AS IS, WHERE IS": All equipment/property is sold "AS IS, WHERE IS" with no warranty or guarantees, expressed or implied, No operational assessments have been made by DPA Auctions on this item, it has been photographed ONLY.



### #226 - IHC Dresser 510 Payloader (PZ7917)

IHC Dresser 510 Payloader (PZ7917), diesel engine (motor is bad), shuttle shift transmission, cab lights, bucket, 15.5-25 tires. Notes: Does Not run, bad motor. Item Location: Morrisonville, IL 62546 Equipment Sold "AS IS, WHERE IS": All equipment/property is sold "AS IS, WHERE IS" with no warranty or guarantees, expressed or implied, No operational assessments have been made by DPA Auctions on this item, it has been photographed ONLY.



### #227 - Brillion Seeder (PZ7959)

Brillion Seeder (PZ7959), Brillion Sure-Stand SS10 seeder, 9.5L-15SL flotation tires. Notes: Item Location: Fairbank, IA 50629 Equipment Sold "AS IS, WHERE IS": All equipment/property is sold "AS IS, WHERE IS" with no warranty or guarantees, expressed or implied, No operational assessments have been made by DPA Auctions on this item, it has been photographed ONLY.



### #228 - Sidekick Direct Injection (PZ7953)

Sidekick Direct Injection (PZ7953), Sidekick direct injection poly tank, Raven SCS-Sidekick controller. Notes: Never been used. Item Location: Fairbank, IA 50629 Equipment Sold "AS IS, WHERE IS": All equipment/property is sold "AS IS, WHERE IS" with no warranty or guarantees, expressed or implied, No operational assessments have been made by DPA Auctions on this item, it has been photographed ONLY.



### #229 - Parker Weigh Wagon (PZ7918)

Parker Weigh Wagon (PZ7918), Parker model 1500-R weigh wagon, single axle, side discharge auger, Briggs & Stratton 18 hp motor, Weigh Tronix 715 digital readout, 12-16.5LT tires. Notes: Item Location: Morrisonville, IL 62546 Equipment Sold "AS IS, WHERE IS": All equipment/property is sold "AS IS, WHERE IS" with no warranty or guarantees, expressed or implied, No operational assessments have been made by DPA Auctions on this item, it has been photographed ONLY.



### #230 - Flotation Tires (PZ7930)

Flotation Tires (PZ7930), 4 - 650/65R38 Flotation tires (1 - Cultor 2 - Mitas AC65, 1 - Alliance), rims. Notes: Item Location: Morrisonville, IL 62546 Equipment Sold "AS IS, WHERE IS": All equipment/property is sold "AS IS, WHERE IS" with no warranty or guarantees, expressed or implied, No operational assessments have been made by DPA Auctions on this item, it has been photographed ONLY.



### #231 - 2007 Chevrolet 2500 HD Pickup (PZ7919, Unit 40662)

2007 Chevrolet 2500 HD Pickup (PZ7919, Unit 40662), 4x4, gas engine, automatic transmission (bad transmission), air conditioning, heat, Am/Fm CD stereo, cruise control, power windows & locks, running boards, LT265/75R16 tires, shows 224,101 miles. Notes: This pickup has a bad transmission. Please call seller for more information. PLEASE ALLOW AT LEAST 60 DAYS FOR TITLE TRANSFER. Item Location: Morrisonville, IL 62546 Equipment Sold "AS IS, WHERE IS": All equipment/property is sold "AS IS, WHERE IS" with no warranty or guarantees, expressed or implied, No operational assessments have been made by DPA Auctions on this item, it has been photographed ONLY.



### #232 - 2009 RoGator 1286C Sprayer (PZ7916, Unit 14583)

2009 RoGator 1286C Sprayer (PZ7916, Unit 14583), Cat diesel engine, hydrostatic transmission, air conditioning, Am/Fm CD radio, 1,200 gallon stainless steel liquid system (S/N LAGCA1286PNU001036), 120' boom, foam marker, stainless steel foam marker tank, top poly rinse tank, Firestone 380/90R46 tires, Raven monitor, Raven SmarTrax, shows 5,673 hours. Notes: The (2) rear flotation tires on this machine WILL BE SOLD IN A SEPARATE LOT, and the rear tires will be replaced with row crop tires. Item Location: Nokomis, IL 62075 Equipment Sold "AS IS, WHERE IS": All equipment/property is sold "AS IS, WHERE IS" with no warranty or guarantees, expressed or implied, No operational assessments have been made by DPA Auctions on this item, it has been photographed ONLY.



### #233 - Liquid Tanks (PZ7935)

Liquid Tanks (PZ7935), 2 - 2400 gallon poly liquid tanks. Notes: Item Location: Appleton, MN 56208 Equipment Sold "AS IS, WHERE IS": All equipment/property is sold "AS IS, WHERE IS" with no warranty or guarantees, expressed or implied, No operational assessments have been made by DPA Auctions on this item, it has been photographed ONLY.



### #234 - Bobcat Skid Steer (PZ7933)

Bobcat Skid Steer (PZ7933), Bobcat 873 skid steer, diesel engine, hydrostatic transmission, cab, lights, bucket, newer tires. Notes: Cab & roll over protection rusted, hydraulic leak under unit. Please call seller for further information. Item Location: Appleton, MN 56208 Equipment Sold "AS IS, WHERE IS": All equipment/property is sold "AS IS, WHERE IS" with no warranty or guarantees, expressed or implied, No operational assessments have been made by DPA Auctions on this item, it has been photographed ONLY.



### #235 - 2009 Neville Built Dry Tender Trailer (PZ7934)

2009 Neville Built Dry Tender Trailer (PZ7934), 2009 Neville Built tender trailer, tandem axle, spring suspension, Tyler 24 ton dry tender box, side discharge auger. Notes: This trailer has been tipped on its side, trailer has a twist in the frame, damage to the tender box. Please call seller for further information. Item Location: Appleton, MN 56208 Equipment Sold "AS IS, WHERE IS": All equipment/property is sold "AS IS, WHERE IS" with no warranty or guarantees, expressed or implied, No operational assessments have been made by DPA Auctions on this item, it has been photographed ONLY.



---

### #236 - 1993 Shopmade Trailer (PZ7936)

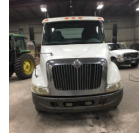
1993 Shopmade Trailer (PZ7936), Shopmade flatbed trailer, tandem axle, spring suspension, 3 - 1500 gallon poly liquid tanks, 2 - chemical eductors. Notes: Some cracks in frame that need to be welded. Please call seller for more information. Item Location: Appleton, MN 56208 Equipment Sold "AS IS, WHERE IS": All equipment/property is sold "AS IS, WHERE IS" with no warranty or guarantees, expressed or implied, No operational assessments have been made by DPA Auctions on this item, it has been photographed ONLY.



---

### #237 - 2004 IHC 8600 Truck (PZ7932)

2004 IHC 8600 Truck (PZ7932), diesel engine (Not running), 10 speed transmission, air conditioning, heat, Am/Fm CD stereo, tandem axle, full screw, air ride suspension, 5th wheel, shows 751,410 miles. Notes: Motor does NOT run, antifreeze in oil. Please contact seller for further information. Item Location: Appleton, MN 56208 Equipment Sold "AS IS, WHERE IS": All equipment/property is sold "AS IS, WHERE IS" with no warranty or guarantees, expressed or implied, No operational assessments have been made by DPA Auctions on this item, it has been photographed ONLY.



---

### #238 - 2006 New Holland L170 Skid Steer (PZ7951)

2006 New Holland L170 Skid Steer (PZ7951), diesel engine, hydrostatic transmission, canopy lights, 72" bucket, rear weights, 12-16.5 tires, shows 4913 hours. Notes: Drive train rebuilt. Item Location: Fairbank, IA 50629 Equipment Sold "AS IS, WHERE IS": All equipment/property is sold "AS IS, WHERE IS" with no warranty or guarantees, expressed or implied, No operational assessments have been made by DPA Auctions on this item, it has been photographed ONLY.



---

### #239 - Tractor Weights (PZ7955)

Tractor Weights (PZ7955), 27 - CaseIH Magnum weights. Notes: Item Location: Fairbank, IA 50629 Equipment Sold "AS IS, WHERE IS": All equipment/property is sold "AS IS, WHERE IS" with no warranty or guarantees, expressed or implied, No operational assessments have been made by DPA Auctions on this item, it has been photographed ONLY.



---

### #240 - IHC 515 Payloader (PZ7910, Unit 78885)

IHC 515 Payloader (PZ7910, Unit 78885), diesel engine, shuttle shift transmission, cab, lights, bucket, 18.4-24 tires, shows 7783 hours. Notes: Item Location: Shelbyville, IL 62565 Equipment Sold "AS IS, WHERE IS": All equipment/property is sold "AS IS, WHERE IS" with no warranty or guarantees, expressed or implied, No operational assessments have been made by DPA Auctions on this item, it has been photographed ONLY.



---

### #241 - 1981 Jantz Trailer (PZ7909, Unit 78886)

1981 Jantz Trailer (PZ7909, Unit 78886), 1991 Jantz trailer, tandem axle, dual wheels in front, ramps, pintal hitch, 8.75-16.5LT tires. Notes: PLEASE ALLOW AT LEAST 60 DAYS FOR TITLE TRANSFER. Item Location: Shelbyville, IL 62565 Equipment Sold "AS IS, WHERE IS": All equipment/property is sold "AS IS, WHERE IS" with no warranty or guarantees, expressed or implied, No operational assessments have been made by DPA Auctions on this item, it has been photographed ONLY.



---

### #242 - 2009 RoGator 1286C Sprayer (PZ7921)

2009 RoGator 1286C Sprayer (PZ7921), Cat diesel engine, hydrostatic transmission, air conditioning, heat, Am/Fm CD stereo, 1200 gallon stainless steel liquid system (LAGCA1286CNU001039), 120' boom, foam marker, stainless steel foam marker tank, top poly rinse tank, 3 - Good Year 1 - Firestone 380/902R46 tires, Raven SmarTrax, shows 5210 hours. Notes: Float tires on the machine DO NOT SELL with the machine, they will be sold separately. Item Location: Morrisonville, IL 62546 Equipment Sold "AS IS, WHERE IS": All equipment/property is sold "AS IS, WHERE IS" with no warranty or guarantees, expressed or implied, No operational assessments have been made by DPA Auctions on this item, it has been photographed ONLY.



---

### #243 - 2010 Challenger MT675C Tractor (PZ7471)

2010 Challenger MT675C Tractor (PZ7471), PFA Suspended MFWD front axle, diesel engine, CVT hyd transmission 18/32 MPH approx. speed, standard cab, Michelin Agri Bib 420/85R34 front duals 80%, Michelin Agri Bib 480/80R50 rear duals 80%, 46 GPM hyd pump, 5 rear hyd valves/fender controls standard light package with 2 roof beacons, 3 point hitch, standard draw bar, PTO, diesel water sep filter, (4) 250 KG rear weights, 1/2 wt pack on suspended front axle, GPS ready, shows 691 hours. Notes: Item Location: Casey, IL 62420 Equipment Sold "AS IS, WHERE IS": All equipment/property is sold "AS IS, WHERE IS" with no warranty or guarantees, expressed or implied, No operational assessments have been made by DPA Auctions on this item, it has been photographed ONLY.





### #244 - 2005 Freightliner Century (DR7726)

2005 Freightliner Century (DR7726), Detroit diesel engine, 10 speed transmission, tandem axle full screw, air ride suspension, day cab, dual aluminum fuel tanks, shows 887,387 miles. Notes: Item Location: Reedsville, WI 54230 Equipment Sold "AS IS, WHERE IS": All equipment/property is sold "AS IS, WHERE IS" with no warranty or guarantees, expressed or implied, No operational assessments have been made by DPA Auctions on this item, it has been photographed ONLY.



### #245 - Truck Grill Guard (DR7724)

Truck Grill Guard (DR7724), polished stainless steel front semi truck grill guard, currently has Freightliner Coronado mounts easily converted. Notes: Item Location: Whitelaw, WI 54247 Equipment Sold "AS IS, WHERE IS": All equipment/property is sold "AS IS, WHERE IS" with no warranty or guarantees, expressed or implied, No operational assessments have been made by DPA Auctions on this item, it has been photographed ONLY.



### #246 - Truck Grill Guard (DR7725)

Truck Grill Guard (DR7725), polished stainless steel front semi truck grill guard, currently has Freightliner Coronado mounts easily converted. Notes: Item Location: Whitelaw, WI 54247 Equipment Sold "AS IS, WHERE IS": All equipment/property is sold "AS IS, WHERE IS" with no warranty or guarantees, expressed or implied, No operational assessments have been made by DPA Auctions on this item, it has been photographed ONLY.



### #247 - 2009 Blu Jet Tool Bar (PZ7941)

2009 Blu Jet Tool Bar (PZ7941), 2009 Blu Jet AT6010 NH3 tool bar, 24 row, coulter, double disc sealers, Double Raven super coolers, hydraulic wings, rear hitch. Notes: Item Location: Princeville, IL 61559 Equipment Sold "AS IS, WHERE IS": All equipment/property is sold "AS IS, WHERE IS" with no warranty or guarantees, expressed or implied, No operational assessments have been made by DPA Auctions on this item, it has been photographed ONLY.



### #248 - 2003 RoGator 1064 Sprayer (PZ7937)

2003 RoGator 1064 Sprayer (PZ7937), Cat diesel engine, hydrostatic transmission, air conditioning, heat, Am/Fm radio, 1100 stainless steel liquid system, 100' straight and solid boom, foam marker, stainless steel foam marker tank, top poly rinse tank, 380/90R46 tires @ 75%, Envisio Pro, Raven SCS661 monitor, shows 3415 hours. Notes: Hydros replaced a year ago, 2 - New wheel motors. Item Location: Harristown, IL 62537 Equipment Sold "AS IS, WHERE IS": All equipment/property is sold "AS IS, WHERE IS" with no warranty or guarantees, expressed or implied, No operational assessments have been made by DPA Auctions on this item, it has been photographed ONLY.



### #249 - Sprayer Tires (PZ7954)

Sprayer Tires (PZ7954), 4 - New Good Year Super Traction Radial DT800 320/85R38 tires, 10 bolt rims. Notes: Item Location: Fairbank, IA 50629 Equipment Sold "AS IS, WHERE IS": All equipment/property is sold "AS IS, WHERE IS" with no warranty or guarantees, expressed or implied, No operational assessments have been made by DPA Auctions on this item, it has been photographed ONLY.



### #250 - 1996 Terra Gator 1903 (PZ7939)

1996 Terra Gator 1903 (PZ7939), Cat diesel engine, Torque boost transmission, air conditioning, heat, Am/Fm radio, Good Year 73" tires, shows 7116 hours, 79,527 miles. Notes: Item Location: Clear Lake, IA 50428 Equipment Sold "AS IS, WHERE IS": All equipment/property is sold "AS IS, WHERE IS" with no warranty or guarantees, expressed or implied, No operational assessments have been made by DPA Auctions on this item, it has been photographed ONLY.



### #251 - 2003 DMI Tool Bar (PZ7942)

2003 DMI Tool Bar (PZ7942), 2003 DMI 5310 NH3 tool bar, 16 row, 1x2 shanks, 24" coulter, 18" double disc sealers, Continental cooler, hydraulic wings, walking tandems, markers, flotation tires, rear hitch. Notes: Item Location: Lincoln, IL 62656 Equipment Sold "AS IS, WHERE IS": All equipment/property is sold "AS IS, WHERE IS" with no warranty or guarantees, expressed or implied, No operational assessments have been made by DPA Auctions on this item, it has been photographed ONLY.



### #252 - 1988 IHC Liquid Truck (PZ7944, Unit 432)

1988 IHC Liquid Truck (PZ7944, Unit 432), DT466 diesel engine, 6 speed transmission, air conditioning, heat, Am/Fm radio, single axle, 1600 gallon stainless steel liquid nurse tank, shows 667,164 miles. Notes: Item Location: Green Valley, IL 61534 Equipment Sold "AS IS, WHERE IS": All equipment/property is sold "AS IS, WHERE IS" with no warranty or guarantees, expressed or implied, No operational assessments have been made by DPA Auctions on this item, it has been photographed ONLY.



### #253 - 1998 Mack CH613 Truck (PZ7945, Unit 944)

1998 Mack CH613 Truck (PZ7945, Unit 944), diesel engine, 10 speed transmission, heat, cruise control, engine brake, tandem axle, full screw, shows 494,929 miles. Notes: Item Location: Green Valley, IL 61534 Equipment Sold "AS IS, WHERE IS": All equipment/property is sold "AS IS, WHERE IS" with no warranty or guarantees, expressed or implied, No operational assessments have been made by DPA Auctions on this item, it has been photographed ONLY.



### #254 - 2014 Parker 1048 Grain Cart (MH238)

2014 Parker 1048 Grain Cart (MH238), Parker 1050 bushel grain cart, roll tarp, 35.5X32 knobby tires, used 3 seasons, excellent condition. Notes: Item Location: Troy Mills, IA 52344 Equipment Sold "AS IS, WHERE IS": All equipment/property is sold "AS IS, WHERE IS" with no warranty or guarantees, expressed or implied, No operational assessments have been made by DPA Auctions on this item, it has been photographed ONLY.



### #255 - S&A BC814 Conveyor (TR4120)

S&A BC814 Conveyor (TR4120), drive over conveyor, 13 HP Honda with 168 hours. 24" belt, 8' drive over, 29' up length, 14' discharge height. Notes: Item Location: Clyde, KS 66938 Equipment Sold "AS IS, WHERE IS": All equipment/property is sold "AS IS, WHERE IS" with no warranty or guarantees, expressed or implied, No operational assessments have been made by DPA Auctions on this item, it has been photographed ONLY.



### #256 - Case 586C Forklift (TR3539)

Case 586C Forklift (TR3539), Case 58c C forklift, Side shift, 4x2, good tires, runs great. Notes: Item Location: Murphysboro, IL 62966 Equipment Sold "AS IS, WHERE IS": All equipment/property is sold "AS IS, WHERE IS" with no warranty or guarantees, expressed or implied, No operational assessments have been made by DPA Auctions on this item, it has been photographed ONLY.



### #257 - 2005 Felling Sprayer Trailer (PZ7952)

2005 Felling Sprayer Trailer (PZ7952), 2005 Felling sprayer trailer, tandem axle, ramps, pintal hitch, 215/75R17.5 tires. Notes: Item Location: Fairbank, IA 50629 Equipment Sold "AS IS, WHERE IS": All equipment/property is sold "AS IS, WHERE IS" with no warranty or guarantees, expressed or implied, No operational assessments have been made by DPA Auctions on this item, it has been photographed ONLY.



### #258 - New Leader 3020 G4 Lime Bed (NP6098)

New Leader 3020 G4 Lime Bed (NP6098), 12.5' bed, dual spinners, belt over chain, no pump or motor. Notes: This is the BED ONLY, the machine DOES NOT SELL with this lot. Item Location: Waverly, KS 66871 Equipment Sold "AS IS, WHERE IS": All equipment/property is sold "AS IS, WHERE IS" with no warranty or guarantees, expressed or implied, No operational assessments have been made by DPA Auctions on this item, it has been photographed ONLY.



### #259 - 2000 RoGator 1254 Sprayer (PZ7938)

2000 RoGator 1254 Sprayer (PZ7938), Cummins diesel engine, hydrostatic transmission, air conditioning, heat, Am/Fm radio, 1200 gallon stainless steel liquid system, 90' boom, foam marker, stainless steel foam marker tank, top poly rinse tank, Good Year 320/90R50 tires. Notes: Seller thinks hours are between 5000 - 6000 hours. Please call seller for further information. Item Location: El Paso, IL 61738 Equipment Sold "AS IS, WHERE IS": All equipment/property is sold "AS IS, WHERE IS" with no warranty or guarantees, expressed or implied, No operational assessments have been made by DPA Auctions on this item, it has been photographed ONLY.



### #260 - Yale GLC050 Forklift (DL183)

Yale GLC050 Forklift (DL183), 12,043 hours. Notes: Had a recent tune up. Has a miss in the engine and hydraulic leaks. Reason for selling is company is switching to all electric forklifts. Item Location: Boone, IA 50036 Equipment Sold "AS IS, WHERE IS": All equipment/property is sold "AS IS, WHERE IS" with no warranty or guarantees, expressed or implied, No operational assessments have been made by DPA Auctions on this item, it has been photographed ONLY.



### #261 - New Firestone Radial 380/105/50 Ag Tire (PD558)

New Firestone Radial 380/105/50 Ag Tire (PD558), never been mounted, kept on hand for spare, fits John Deere 4920, 4930, 4940 and 4045R self propelled sprayers, always kept indoors. Notes: Item Location: Bayard, IA 50029 Equipment Sold "AS IS, WHERE IS": All equipment/property is sold "AS IS, WHERE IS" with no warranty or guarantees, expressed or implied, No operational assessments have been made by DPA Auctions on this item, it has been photographed ONLY.



### #262 - 1997 H&H Gooseneck Deckover Trailer (PD557)

1997 H&H Gooseneck Deckover Trailer (PD557), 25 Foot with 5 Foot Beaver, tires are 75% with chrome inserts, beaver can be raised and locked for a full 30 foot of usable bed, brakes work fine, paint and wood floor in very good condition, 2nd owner, previous owner hauled antique tractors to shows, bought in 2012 and only used a couple of times, overall trailer like new condition. Notes: Item Location: Bayard, IA 50029 Equipment Sold "AS IS, WHERE IS": All equipment/property is sold "AS IS, WHERE IS" with no warranty or guarantees, expressed or implied, No operational assessments have been made by DPA Auctions on this item, it has been photographed ONLY.



### #263 - 2001 Wilson Aluminum Stepdeck Trailer (PD556)

2001 Wilson Aluminum Stepdeck Trailer (PD556), 48 foot X 102, fixed spread axle, air ride, tires and brakes 80%, all aluminum wheels, 2 x 3000 gallon tanks with 3 inch plumbing, Honda 3 inch pump and educator, 60 gallon stainless steel fresh water tank, always shedded when not in use. Notes: Item Location: Bayard, IA 50029 Equipment Sold "AS IS, WHERE IS": All equipment/property is sold "AS IS, WHERE IS" with no warranty or guarantees, expressed or implied, No operational assessments have been made by DPA Auctions on this item, it has been photographed ONLY.



### #264 - 2010 McFarlane 4030 Reel Disk (PD430)

2010 McFarlane 4030 Reel Disk (PD430), Model RD-4030-RB6, 30 Foot Reel Disk, blades show 18 3/4 Inches, stored inside. Notes: Item Location: Bunceton, MO 65237 Equipment Sold "AS IS, WHERE IS": All equipment/property is sold "AS IS, WHERE IS" with no warranty or guarantees, expressed or implied, No operational assessments have been made by DPA Auctions on this item, it has been photographed ONLY.



### #265 - 1991 International 9400 Day Cab (KMK426)

1991 International 9400 Day Cab (KMK426), Model 9400 6x4 SBA, Cummins N-14, Eaton Fuller Road ranger 9 speed transmission, heat, AM/FM/Bluetooth radio, tandem axle, air ride, air dumps, 11 R 24.5 tires, condition fair, good brakes, new batteries last year, starts and runs great, shows 619,416 miles. Notes: Item Location: Wolcott, IN 47995 Equipment Sold "AS IS, WHERE IS": All equipment/property is sold "AS IS, WHERE IS" with no warranty or guarantees, expressed or implied, No operational assessments have been made by DPA Auctions on this item, it has been photographed ONLY.



### #266 - 2007 Hooper Sprayer Trailer (PZ7958)

2007 Hooper Sprayer Trailer (PZ7958), 2007 Hooper 48' sprayer trailer, tandem axle, 10' top deck, 34' main deck, 5' beaver tail, ramps, 8 1/2' wide with rub rail, steel over wheels, twin jacks, 215/75R17.5 dual tires. Notes: Item Location: Fairbank, IA 50629 Equipment Sold "AS IS, WHERE IS": All equipment/property is sold "AS IS, WHERE IS" with no warranty or guarantees, expressed or implied, No operational assessments have been made by DPA Auctions on this item, it has been photographed ONLY.



### #267 - 2003 RoGator 1064 Sprayer (PZ7940)

2003 RoGator 1064 Sprayer (PZ7940), Cat diesel engine, hydrostatic transmission, air conditioning, heat, Am/Fm radio, 1080 gallon stainless steel liquid system, 90' boom, 20" spacing, foam marker, stainless steel foam marker tank, top poly rinse tank, Michelin 380/90R46 tires, Raven SCS661 monitor, shows 4,422 hours. Notes: Item Location: Princeville, IL 61559 Equipment Sold "AS IS, WHERE IS": All equipment/property is sold "AS IS, WHERE IS" with no warranty or guarantees, expressed or implied, No operational assessments have been made by DPA Auctions on this item, it has been photographed ONLY.



### #268 - 2007 CaseIH SPX3320 Sprayer (PZ7943, Unit 792)

2007 CaseIH SPX3320 Sprayer (PZ7943, Unit 792), diesel engine, hydrostatic transmission, air conditioning, heat, Am/Fm radio, 1000 gallon stainless steel liquid system, 60/100' boom, EZ-Boom 2010, auto section control, foam marker, Michelin 380/90R46 tires, Raven SCS 4600 monitor, lightbar, Aim Command, shows 4129 hours. Notes: Item Location: Mount Pulaski, IL 62548 Equipment Sold "AS IS, WHERE IS": All equipment/property is sold "AS IS, WHERE IS" with no warranty or guarantees, expressed or implied, No operational assessments have been made by DPA Auctions on this item, it has been photographed ONLY.



### #269 - 2013 Willmar Dry Tender Trailer (TR4125)

2013 Willmar Dry Tender Trailer (TR4125), Neville chassis with a Wilmar 24T 3 bin Sideshooter, Power unit is a 4 cyl Isuzu with appx 869 hours, Fuel tank on the RF corner of the trailer is not included. Notes: Unit will sell with a SALVAGE TITLE. Was overturned onto the right side with damage as seen in the photos. Item Location: York, NE 68467 Equipment Sold "AS IS, WHERE IS": All equipment/property is sold "AS IS, WHERE IS" with no warranty or guarantees, expressed or implied, No operational assessments have been made by DPA Auctions on this item, it has been photographed ONLY.



**#270 - Quickstak Palletizer (TR3833)**

Quickstak Palletizer (TR3833), Quickstak palletizer machine, Quickstak Palletizing Machine incorporates an air flotation table so that even a 110 pound bag can be manipulated with little effort, allowing a single operator to palletize bags at a typical rate of 20 bags-per-minute, depending on size and number of bags per row. Manual adjustment guides around the flotation table ensure a square pattern for virtually any pallet size. Notes: Item Location: Hazen, AR 72064 Equipment Sold "AS IS, WHERE IS": All equipment/property is sold "AS IS, WHERE IS" with no warranty or guarantees, expressed or implied, No operational assessments have been made by DPA Auctions on this item, it has been photographed ONLY.

**#271 - Quickstak Palletizer (TR3834)**

Quickstak Palletizer (TR3834), Quickstak palletizer machine, Quickstak Palletizing Machine incorporates an air flotation table so that even a 110 pound bag can be manipulated with little effort, allowing a single operator to palletize bags at a typical rate of 20 bags-per-minute, depending on size and number of bags per row. Manual adjustment guides around the flotation table ensure a square pattern for virtually any pallet size. Notes: Item Location: Hazen, AR 72064 Equipment Sold "AS IS, WHERE IS": All equipment/property is sold "AS IS, WHERE IS" with no warranty or guarantees, expressed or implied, No operational assessments have been made by DPA Auctions on this item, it has been photographed ONLY.

**#272 - Kinze 1500 Cultivator (PZ7962)**

Kinze 1500 Cultivator (PZ7962), Kinze model 1500 cultivator, 13 knife, 3-point, hydraulic wings. Notes: Item Location: Fairbank, IA 50629 Equipment Sold "AS IS, WHERE IS": All equipment/property is sold "AS IS, WHERE IS" with no warranty or guarantees, expressed or implied, No operational assessments have been made by DPA Auctions on this item, it has been photographed ONLY.

**#273 - New Leader 3220 G4 Lime Bed (NP6099)**

New Leader 3220 G4 Lime Bed (NP6099), Model 127204, MultiApplier Ready, stainless steel, 12.5' bed, dual spinners, belt over chain. Notes: Trailer DOES NOT SELL with this bed. Item Location: Waverly, KS 66871 Equipment Sold "AS IS, WHERE IS": All equipment/property is sold "AS IS, WHERE IS" with no warranty or guarantees, expressed or implied, No operational assessments have been made by DPA Auctions on this item, it has been photographed ONLY.

**#274 - Blu Jet AT6010 Liquid Applicator (PZ7960)**

Blu Jet AT6010 Liquid Applicator (PZ7960), Blu Jet AT4610 23 coulter liquid injection applicator, 1500 gallon poly liquid tank, Good Year 420/80R46 tires, hydraulic wing. Notes: Item Location: Fairbank, IA 50629 Equipment Sold "AS IS, WHERE IS": All equipment/property is sold "AS IS, WHERE IS" with no warranty or guarantees, expressed or implied, No operational assessments have been made by DPA Auctions on this item, it has been photographed ONLY.

**#275 - New Leader Dry Box (PZ7928)**

New Leader Dry Box (PZ7928), New Leader L3020 G4 - 11 stainless steel dry spreader box, twin spinner, all hydraulic, electric roll over tarp. Notes: Item Location: Nokomis, IL 62075 Equipment Sold "AS IS, WHERE IS": All equipment/property is sold "AS IS, WHERE IS" with no warranty or guarantees, expressed or implied, No operational assessments have been made by DPA Auctions on this item, it has been photographed ONLY.

**#276 - Tractor Weights (PZ7956)**

Tractor Weights (PZ7956), 20 - Assorted John Deere weights. Notes: Item Location: Fairbank, IA 50629 Equipment Sold "AS IS, WHERE IS": All equipment/property is sold "AS IS, WHERE IS" with no warranty or guarantees, expressed or implied, No operational assessments have been made by DPA Auctions on this item, it has been photographed ONLY.

**#277 - 2002 Ford Mustang GT Convertible (PZ7961)**

2002 Ford Mustang GT Convertible (PZ7961), gas engine, 5 speed transmission, air conditioning, heat, Am/Fm 6 changer CD stereo, cruise control, power windows & locks, Good Year Eagle ZR45 245/45ZR17 tires, shows 46,707 miles. Notes: Item Location: Fairbank, IA 50629 Equipment Sold "AS IS, WHERE IS": All equipment/property is sold "AS IS, WHERE IS" with no warranty or guarantees, expressed or implied, No operational assessments have been made by DPA Auctions on this item, it has been photographed ONLY.

**#278 - Liquid Nurse Tank (PZ7971)**

Liquid Nurse Tank (PZ7971), 2000 gallon poly liquid nurse tank, water use only, bottom drain plug, 2" discharge. Notes: Any tear downs or any help with loading can be done at no charge. Item Location: New Sharon, IA 50207 Equipment Sold "AS IS, WHERE IS": All equipment/property is sold "AS IS, WHERE IS" with no warranty or guarantees, expressed or implied, No operational assessments have been made by DPA Auctions on this item, it has been photographed ONLY.





### #279 - CaseIH 5400 Soybean Special (PZ7969)

CaseIH 5400 Soybean Special (PZ7969), CaseIH 5400 Soybean special drill, markers, 9.35L-14 flotation tires, S/N JAG0850759 w/Yetter model 6600 coulter cart, 17" coulters, 11L-15 SL flotation tires. Notes: Used on 200 acres of beans last several years, always cleaned and shedded when not in use. Item Location: New Sharon, IA 50207 Equipment Sold "AS IS, WHERE IS": All equipment/property is sold "AS IS, WHERE IS" with no warranty or guarantees, expressed or implied, No operational assessments have been made by DPA Auctions on this item, it has been photographed ONLY.



### #280 - IHC 1586 Wide Front Tractor (PZ7970)

IHC 1586 Wide Front Tractor (PZ7970), diesel engine (overhauled but NO paperwork), cab, lights, heat, dual PTO, 2 port hydraulics, 3-point, newer handrail and step, 11.00-16 front tires, 20.8-38 rear dual tires, heavy duty hubs, life time torque, tractor equipped with a spragless T.A., shows 8884 hours. Notes: Always shedded when not in use. Used to pull No-Till drill & run auger last several years. Item Location: New Sharon, IA 50207 Equipment Sold "AS IS, WHERE IS": All equipment/property is sold "AS IS, WHERE IS" with no warranty or guarantees, expressed or implied, No operational assessments have been made by DPA Auctions on this item, it has been photographed ONLY.



### #281 - 1992 Stoughton Dolly (PZ7973)

1992 Stoughton Dolly (PZ7973), 1992 Stoughton model DD-S single axle dolly, pintal hitch, 295/75R22.5 tires. Notes: NO TITLE. Item Location: New Sharon, IA 50207 Equipment Sold "AS IS, WHERE IS": All equipment/property is sold "AS IS, WHERE IS" with no warranty or guarantees, expressed or implied, No operational assessments have been made by DPA Auctions on this item, it has been photographed ONLY.



### #282 - 1952 Transport Trailer (PZ7974)

1952 Transport Trailer (PZ7974), 1952 Transport trailer model GPY-20S, 6'8" top deck, 21' main deck, 2'5" beaver tail, 5' ramps, tandem axle, 8.25-20 tires. Notes: Item Location: New Sharon, IA 50207 Equipment Sold "AS IS, WHERE IS": All equipment/property is sold "AS IS, WHERE IS" with no warranty or guarantees, expressed or implied, No operational assessments have been made by DPA Auctions on this item, it has been photographed ONLY.



### #283 - Flotation Tires (PZ7915)

Flotation Tires (PZ7915), 4 - Continental Contract AC65 650/65R38 flotation tires & rims (1 - flotation tire is shredded but the rim is good). Notes: Item Location: Nokomis, IL 62075 Equipment Sold "AS IS, WHERE IS": All equipment/property is sold "AS IS, WHERE IS" with no warranty or guarantees, expressed or implied, No operational assessments have been made by DPA Auctions on this item, it has been photographed ONLY.



### #284 - 2016 New Leader MultApplier

2016 New Leader MultApplier, Model NL200G4, MultApplier, 2016 model, 301462. Notes: Item Location: Hunter, ND 58048 Equipment Sold "AS IS, WHERE IS": All equipment/property is sold "AS IS, WHERE IS" with no warranty or guarantees, expressed or implied, No operational assessments have been made by DPA Auctions on this item, it has been photographed ONLY.



### #285 - 2007 RoGator 1274 Sprayer (TR4200)

2007 RoGator 1274 Sprayer (TR4200), diesel engine, hydrostat transmission, Heat/AC, AM/FM CD player, C-9 Cat. 6315 hrs. 1200 gallon tank. 90' booms. Raven Viper pro w/ light bar. Machine has transmission issues. Will not move. Notes: Machine has transmission issues. Will not move. Item Location: Silver Lake, KS 66539 Equipment Sold "AS IS, WHERE IS": All equipment/property is sold "AS IS, WHERE IS" with no warranty or guarantees, expressed or implied, No operational assessments have been made by DPA Auctions on this item, it has been photographed ONLY.



### #286 - KSI 120845 Conveyor (TR4202)

KSI 120845 Conveyor (TR4202), Ser # 5154 8" tube 12" cleated belt 45' long 3 phase motor with cord. Notes: Item Location: Silver Lake, KS 66539 Equipment Sold "AS IS, WHERE IS": All equipment/property is sold "AS IS, WHERE IS" with no warranty or guarantees, expressed or implied, No operational assessments have been made by DPA Auctions on this item, it has been photographed ONLY.



### #287 - Ranco Undercar Conveyor (TR4203)

Ranco Undercar Conveyor (TR4203), Model 20 11/2011. Serial #7235. 5 HP 3 phase motor. Notes: Item Location: Silver Lake, KS 66539 Equipment Sold "AS IS, WHERE IS": All equipment/property is sold "AS IS, WHERE IS" with no warranty or guarantees, expressed or implied, No operational assessments have been made by DPA Auctions on this item, it has been photographed ONLY.



### #288 - USC Seed Treater (DR7728)

USC Seed Treater (DR7728), electric motor drive drum seed treater, seed wheel, stainless steel inoculation tank, control box. Notes: Item Location: Kevil, KY 42053 Equipment Sold "AS IS, WHERE IS": All equipment/property is sold "AS IS, WHERE IS" with no warranty or guarantees, expressed or implied, No operational assessments have been made by DPA Auctions on this item, it has been photographed ONLY.



### #289 - Inoculation Tanks (DR7729)

Inoculation Tanks (DR7729), (2) poly cone bottom treater inoculator tanks, top agitators, (1) poly cone bottom tank w/electric motor and 1 1/2" pump. Notes: Item Location: Kevil, KY 42053 Equipment Sold "AS IS, WHERE IS": All equipment/property is sold "AS IS, WHERE IS" with no warranty or guarantees, expressed or implied, No operational assessments have been made by DPA Auctions on this item, it has been photographed ONLY.



### #290 - Inoculation Tanks (DR7730)

Inoculation Tanks (DR7730), (2) poly cone bottom treater inoculator tanks, top agitators. Notes: Item Location: Kevil, KY 42053 Equipment Sold "AS IS, WHERE IS": All equipment/property is sold "AS IS, WHERE IS" with no warranty or guarantees, expressed or implied, No operational assessments have been made by DPA Auctions on this item, it has been photographed ONLY.



### #291 - New Leader Dry Box (PZ7931)

New Leader Dry Box (PZ7931), New Leader L3020 G4 - 11 stainless steel dry spreader box, twin spinner, all hydraulic. Notes: Item Location: Morrisonville, IL 62546 Equipment Sold "AS IS, WHERE IS": All equipment/property is sold "AS IS, WHERE IS" with no warranty or guarantees, expressed or implied, No operational assessments have been made by DPA Auctions on this item, it has been photographed ONLY.



### #292 - 1996 Gaylean Killabrew (DR7727, Unit 8793)

1996 Gaylean Killabrew (DR7727, Unit 8793), tandem axle, hydraulic dry fertilizer tender trailer, 4 compartment, NO MOTOR, 10.00-20 tires. Notes: Trailer all worked 2 years ago the last time it was used. Item Location: New Iberia, LA 70563 Equipment Sold "AS IS, WHERE IS": All equipment/property is sold "AS IS, WHERE IS" with no warranty or guarantees, expressed or implied, No operational assessments have been made by DPA Auctions on this item, it has been photographed ONLY.



### #293 - 2009 Duolift Sprayer Trailer (TR4201)

2009 Duolift Sprayer Trailer (TR4201), Model # 14000E-3 Duolift sprayer trailer. Missing one tire and rim. Pipe does not sell with the trailer. Notes: Item Location: Silver Lake, KS 66539 Equipment Sold "AS IS, WHERE IS": All equipment/property is sold "AS IS, WHERE IS" with no warranty or guarantees, expressed or implied, No operational assessments have been made by DPA Auctions on this item, it has been photographed ONLY.



### #294 - 1991 Clark Forklift (PZ7979, Unit 618)

1991 Clark Forklift (PZ7979, Unit 618), 1991 Clark forklift, LP gas engine, shuttle shift transmission, canopy, pneumatic tires. Notes: Item Location: Goshen, IN 46528 Equipment Sold "AS IS, WHERE IS": All equipment/property is sold "AS IS, WHERE IS" with no warranty or guarantees, expressed or implied, No operational assessments have been made by DPA Auctions on this item, it has been photographed ONLY.



### #295 - Allis Chalmers Forklift (PZ7980)

Allis Chalmers Forklift (PZ7980) Allis Chalmers model FT-20-24 forklift, gas engine, shuttle shift transmission, canopy, shows 5633 hours. Notes: Item Location: Goshen, IN 46528 Equipment Sold "AS IS, WHERE IS": All equipment/property is sold "AS IS, WHERE IS" with no warranty or guarantees, expressed or implied, No operational assessments have been made by DPA Auctions on this item, it has been photographed ONLY.



### #296 - Snyder Poly Tank (PZ7984)

Snyder Poly Tank (PZ7984), Snyder poly flat bottom tank. Notes: Item Location: Goshen, IN 46528 Equipment Sold "AS IS, WHERE IS": All equipment/property is sold "AS IS, WHERE IS" with no warranty or guarantees, expressed or implied, No operational assessments have been made by DPA Auctions on this item, it has been photographed ONLY.



---

### #297 - Liquid Tank (PZ7991)

Liquid Tank (PZ7991), 675 gallon stainless steel liquid tank. Notes: Item Location: Goshen, IN 46528 Equipment Sold "AS IS, WHERE IS": All equipment/property is sold "AS IS, WHERE IS" with no warranty or guarantees, expressed or implied, No operational assessments have been made by DPA Auctions on this item, it has been photographed ONLY.



---

### #298 - Refurbished Tokeim Fuel Pumps (PZ7981)

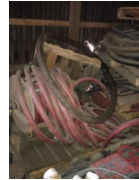
Refurbished Tokeim Fuel Pumps (PZ7981), 3 - Tokeim 426 double sided station type fuel dispensers refurbished never used still in shrink wrap from factory, 1 - Tokeim single sided station type fuel dispenser never used still in shrink wrap from factory. Notes: Item Location: Goshen, IN 46528 Equipment Sold "AS IS, WHERE IS": All equipment/property is sold "AS IS, WHERE IS" with no warranty or guarantees, expressed or implied, No operational assessments have been made by DPA Auctions on this item, it has been photographed ONLY.



---

### #299 - Fuel Hose (PZ7985)

Fuel Hose (PZ7985), Used misc 1 1/4" fuel hose. Notes: Item Location: Goshen, IN 46528 Equipment Sold "AS IS, WHERE IS": All equipment/property is sold "AS IS, WHERE IS" with no warranty or guarantees, expressed or implied, No operational assessments have been made by DPA Auctions on this item, it has been photographed ONLY.



---

### #300 - Hydraulic Drum Loader (PZ7989)

Hydraulic Drum Loader (PZ7989), Hydraulic drum loader. Notes: Item Location: Goshen, IN 46528 Equipment Sold "AS IS, WHERE IS": All equipment/property is sold "AS IS, WHERE IS" with no warranty or guarantees, expressed or implied, No operational assessments have been made by DPA Auctions on this item, it has been photographed ONLY.



---

### #301 - Oil Storage (PZ7990)

Oil Storage (PZ7990), Oil truck oil drum storage. Notes: Item Location: Goshen, IN 46528 Equipment Sold "AS IS, WHERE IS": All equipment/property is sold "AS IS, WHERE IS" with no warranty or guarantees, expressed or implied, No operational assessments have been made by DPA Auctions on this item, it has been photographed ONLY.



---

### #302 - Fuel Tank (PZ7993)

Fuel Tank (PZ7993), 1400 gallon horizontal steel fuel tank. Notes: Item Location: Goshen, IN 46528 Equipment Sold "AS IS, WHERE IS": All equipment/property is sold "AS IS, WHERE IS" with no warranty or guarantees, expressed or implied, No operational assessments have been made by DPA Auctions on this item, it has been photographed ONLY.



---

### #303 - Fuel Tank (PZ7994)

Fuel Tank (PZ7994), 1400 gallon vertical steel fuel tank. Notes: Item Location: Goshen, IN 46528 Equipment Sold "AS IS, WHERE IS": All equipment/property is sold "AS IS, WHERE IS" with no warranty or guarantees, expressed or implied, No operational assessments have been made by DPA Auctions on this item, it has been photographed ONLY.



---

### #304 - Fuel Tank (PZ7995)

Fuel Tank (PZ7995), 1400 gallon horizontal steel fuel tank. Notes: Item Location: Goshen, IN 46528 Equipment Sold "AS IS, WHERE IS": All equipment/property is sold "AS IS, WHERE IS" with no warranty or guarantees, expressed or implied, No operational assessments have been made by DPA Auctions on this item, it has been photographed ONLY.



---

### #305 - Fuel Tank & Containment (PZ7996)

Fuel Tank & Containment (PZ7996), 1000 gallon steel fuel tank, steel containment, steps. Notes: Item Location: Goshen, IN 46528 Equipment Sold "AS IS, WHERE IS": All equipment/property is sold "AS IS, WHERE IS" with no warranty or guarantees, expressed or implied, No operational assessments have been made by DPA Auctions on this item, it has been photographed ONLY.



---

### #306 - Running Gear (PZ7992)

Running Gear (PZ7992), 4 wheel running gear. Notes: Item Location: Goshen, IN 46528 Equipment Sold "AS IS, WHERE IS": All equipment/property is sold "AS IS, WHERE IS" with no warranty or guarantees, expressed or implied, No operational assessments have been made by DPA Auctions on this item, it has been photographed ONLY.



---

### #307 - Floor Scales (PZ7982)

Floor Scales (PZ7982) 4 - floor scales, 1 has weights and measures approved. Notes: Item Location: Goshen, IN 46528 Equipment Sold "AS IS, WHERE IS": All equipment/property is sold "AS IS, WHERE IS" with no warranty or guarantees, expressed or implied, No operational assessments have been made by DPA Auctions on this item, it has been photographed ONLY.



---

### #308 - Pipe Holder (PZ7986)

Pipe Holder (PZ7986), Pipe holder. Notes: Item Location: Goshen, IN 46528 Equipment Sold "AS IS, WHERE IS": All equipment/property is sold "AS IS, WHERE IS" with no warranty or guarantees, expressed or implied, No operational assessments have been made by DPA Auctions on this item, it has been photographed ONLY.



---

### #309 - LP Tank Mover (PZ7988)

LP Tank Mover (PZ7988), LP tank mover trailer, single axle, will move 1000 gallon tank. Notes: Item Location: Goshen, IN 46528 Equipment Sold "AS IS, WHERE IS": All equipment/property is sold "AS IS, WHERE IS" with no warranty or guarantees, expressed or implied, No operational assessments have been made by DPA Auctions on this item, it has been photographed ONLY.



---

### #310 - TSC Tool Box (PZ7983)

TSC Tool Box (PZ7983), TSC steel tool box. Notes: Item Location: Goshen, IN 46528 Equipment Sold "AS IS, WHERE IS": All equipment/property is sold "AS IS, WHERE IS" with no warranty or guarantees, expressed or implied, No operational assessments have been made by DPA Auctions on this item, it has been photographed ONLY.



---

### #311 - Dock Ramp (PZ7987)

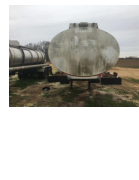
Dock Ramp (PZ7987), 5x5 dock ramp. Notes: Item Location: Goshen, IN 46528 Equipment Sold "AS IS, WHERE IS": All equipment/property is sold "AS IS, WHERE IS" with no warranty or guarantees, expressed or implied, No operational assessments have been made by DPA Auctions on this item, it has been photographed ONLY.



---

### #312 - 1973 Heil (DR7850, Unit 75093)

1973 Heil (DR7850, Unit 75093), tandem axle, spring suspension, single compartment w/baffles, 22.5 tires. Notes: PLEASE ALLOW AT LEAST 60 DAYS FOR TITLE TRANSFER. Item Location: Whiteville, TN 38075 Equipment Sold "AS IS, WHERE IS": All equipment/property is sold "AS IS, WHERE IS" with no warranty or guarantees, expressed or implied, No operational assessments have been made by DPA Auctions on this item, it has been photographed ONLY.





### #313 - 1995 Polar (DR7851, Unit 45870)

1995 Polar (DR7851, Unit 45870), 5000 gallon stainless steel liquid transport trailer, top manway access, tandem axle, spring suspension. Notes: PLEASE ALLOW AT LEAST 60 DAYS FOR TITLE TRANSFER. Item Location: Whiteville, TN 38075 Equipment Sold "AS IS, WHERE IS": All equipment/property is sold "AS IS, WHERE IS" with no warranty or guarantees, expressed or implied, No operational assessments have been made by DPA Auctions on this item, it has been photographed ONLY.



### #314 - 1999 Gaylean Killabrew (DR7315, Unit 9169)

1999 Gaylean Killabrew (DR7315, Unit 9169), tandem axle, hydraulic dry fertilizer tender trailer, 4 compartment, has pump NO MOTOR, 10.00-20 tires. Notes: Trailer all worked 2 years ago the last time it was used. Item Location: New Iberia, LA 70563 Equipment Sold "AS IS, WHERE IS": All equipment/property is sold "AS IS, WHERE IS" with no warranty or guarantees, expressed or implied, No operational assessments have been made by DPA Auctions on this item, it has been photographed ONLY.



### #315 - 1997 Gaylean Killabrew (DR7316, Unit 9167)

1997 Gaylean Killabrew (DR7316, Unit 9167), tandem axle, hydraulic dry fertilizer tender trailer, 4 compartment, has pump NO MOTOR, 11-22.5 tires. Notes: Trailer all worked 2 years ago the last time it was used. Item Location: New Iberia, LA 70563 Equipment Sold "AS IS, WHERE IS": All equipment/property is sold "AS IS, WHERE IS" with no warranty or guarantees, expressed or implied, No operational assessments have been made by DPA Auctions on this item, it has been photographed ONLY.



### #316 - 1998 Gaylean Killabrew (DR7317, Unit 9168)

1998 Gaylean Killabrew (DR7317, Unit 9168), tandem axle, hydraulic dry fertilizer tender trailer, 4 compartment, has pump NO MOTOR, 11-R22.5 tires. Notes: Trailer all worked 2 years ago the last time it was used. Item Location: New Iberia, LA 70563 Equipment Sold "AS IS, WHERE IS": All equipment/property is sold "AS IS, WHERE IS" with no warranty or guarantees, expressed or implied, No operational assessments have been made by DPA Auctions on this item, it has been photographed ONLY.



### #317 - Factory Case IH 8010 Combine Planetary Drive (TH202)

Factory Case IH 8010 Combine Planetary Drive (TH202), with foot extension, approximately 500 hours. Notes: Item Location: Mexico, MO 65265 Equipment Sold "AS IS, WHERE IS": All equipment/property is sold "AS IS, WHERE IS" with no warranty or guarantees, expressed or implied, No operational assessments have been made by DPA Auctions on this item, it has been photographed ONLY.



### #318 - Case IH 2208 Corn Head (TH198)

Case IH 2208 Corn Head (TH198), 8 row. Notes: Item Location: Mexico, MO 65265 Equipment Sold "AS IS, WHERE IS": All equipment/property is sold "AS IS, WHERE IS" with no warranty or guarantees, expressed or implied, No operational assessments have been made by DPA Auctions on this item, it has been photographed ONLY.



### #319 - Case IH Turbo Till 330 (TH200)

Case IH Turbo Till 330 (TH200), 34', front blades measure 18.5", back blades measure 19.5". Notes: Item Location: Mexico, MO 65265 Equipment Sold "AS IS, WHERE IS": All equipment/property is sold "AS IS, WHERE IS" with no warranty or guarantees, expressed or implied, No operational assessments have been made by DPA Auctions on this item, it has been photographed ONLY.



### #320 - Case IH TurboTill 330 (TH199)

Case IH TurboTill 330 (TH199), 34', front blades measure 18.5", back blades measure 19.5", new blades, new bolt, new bearing. Notes: Item Location: Mexico, MO 65265 Equipment Sold "AS IS, WHERE IS": All equipment/property is sold "AS IS, WHERE IS" with no warranty or guarantees, expressed or implied, No operational assessments have been made by DPA Auctions on this item, it has been photographed ONLY.



### #321 - 2000 Great Dane/ Pines Aluminum Van Trailer (KMK1330)

2000 Great Dane/ Pines Aluminum Van Trailer (KMK1330), 48' x 102", 13' 6" high, sliding tandem axle, spring suspension, 275/ 80 R 22.5 tires, roll up back door, translucent roof, e-track, very good condition. Notes: Item Location: Dayton, IA 50530 Equipment Sold "AS IS, WHERE IS": All equipment/property is sold "AS IS, WHERE IS" with no warranty or guarantees, expressed or implied, No operational assessments have been made by DPA Auctions on this item, it has been photographed ONLY.



---

### #322 - 2000 Great Dane Aluminum Van Trailer (KMK1331)

2000 Great Dane Aluminum Van Trailer (KMK1331), 48' x 102", 13' 6" high, sliding tandem axle, spring suspension, 11 R 22.5 tires, roll up back door, translucent roof, e-track, very good condition. Notes: Item Location: Dayton, IA 50530 Equipment Sold "AS IS, WHERE IS": All equipment/property is sold "AS IS, WHERE IS" with no warranty or guarantees, expressed or implied, No operational assessments have been made by DPA Auctions on this item, it has been photographed ONLY.



---

### #323 - 2009 Wacker 1150 Loader (CG392)

2009 Wacker 1150 Loader (CG392), Deutz diesel, 2 speed transmission, heat/AC, hydraulic quick connect, forks and light weight material bucket, 9200 lbs light capacity, all wheel steer loader, shows 2724 hours. Notes: Fuel gauge is not currently working. Item Location: Ridott, IL 61067 Equipment Sold "AS IS, WHERE IS": All equipment/property is sold "AS IS, WHERE IS" with no warranty or guarantees, expressed or implied, No operational assessments have been made by DPA Auctions on this item, it has been photographed ONLY.



---

### #324 - Westfield 10 X 41 Foot Auger (EG358)

Westfield 10 X 41 Foot Auger (EG358), with 7 HP electric motor, tube had been patched and auger flighting is getting thin, worked great when last used. Notes: Item Location: Gilman, IL 60938 Equipment Sold "AS IS, WHERE IS": All equipment/property is sold "AS IS, WHERE IS" with no warranty or guarantees, expressed or implied, No operational assessments have been made by DPA Auctions on this item, it has been photographed ONLY.



---

### #325 - Westfield 13 X 71 Foot Auger (EG353)

Westfield 13 X 71 Foot Auger (EG353), good auger, newer bearings top and bottom, 540 PTO, good shape used this fall. Notes: Item Location: Gilman, IL 60938 Equipment Sold "AS IS, WHERE IS": All equipment/property is sold "AS IS, WHERE IS" with no warranty or guarantees, expressed or implied, No operational assessments have been made by DPA Auctions on this item, it has been photographed ONLY.



---

### #326 - 2011 John Deere 1990 CCS Air Seeder (EG360)

2011 John Deere 1990 CCS Air Seeder (EG360), 40 Feet wide, 7 1/2 inch spacing, rebuilt less than 2000 acres ago, new gauge wheels, new seed boots, new closing wheels, has scales, good tires, worked great for soybeans and wheat. Notes: Item Location: Gilman, IL 60938 Equipment Sold "AS IS, WHERE IS": All equipment/property is sold "AS IS, WHERE IS" with no warranty or guarantees, expressed or implied, No operational assessments have been made by DPA Auctions on this item, it has been photographed ONLY.



---

### #327 - Gehl 1065 Silage Chopper (EG355)

Gehl 1065 Silage Chopper (EG355), blades in good shape, 2 row, good shape. Notes: Item Location: Gilman, IL 60938 Equipment Sold "AS IS, WHERE IS": All equipment/property is sold "AS IS, WHERE IS" with no warranty or guarantees, expressed or implied, No operational assessments have been made by DPA Auctions on this item, it has been photographed ONLY.



---

### #328 - International 470 Disk (EG354)

International 470 Disk (EG354), 18 inch blades, tires hold air, hydraulics for wing fold. Notes: Item Location: Gilman, IL 60938 Equipment Sold "AS IS, WHERE IS": All equipment/property is sold "AS IS, WHERE IS" with no warranty or guarantees, expressed or implied, No operational assessments have been made by DPA Auctions on this item, it has been photographed ONLY.



---

### #329 - Landoll Weather Proofer (EG357)

Landoll Weather Proofer (EG357), 5 shank, 18 inch + blades, tight shanks, pulls nice, hard to find any one nicer. Notes: Item Location: Gilman, IL 60938 Equipment Sold "AS IS, WHERE IS": All equipment/property is sold "AS IS, WHERE IS" with no warranty or guarantees, expressed or implied, No operational assessments have been made by DPA Auctions on this item, it has been photographed ONLY.



### #330 - 2 X Bottom Plows For Parts (EG359)

2 X Bottom Plows For Parts (EG359), great for parts, selling all together 6 bottoms total. Notes: Item Location: Gilman, IL 60938 Equipment Sold "AS IS, WHERE IS": All equipment/property is sold "AS IS, WHERE IS" with no warranty or guarantees, expressed or implied, No operational assessments have been made by DPA Auctions on this item, it has been photographed ONLY.



### #331 - 1993 John Deere 7200 Planter (DL188)

1993 John Deere 7200 Planter (DL188), 16 row, 30 inch, finger pickup, precision parts, sunflower fingers, Kinze bean meters, Milo plates, liquid starter, new opener blades, 1500 ac ago insecticide boxes, 250 monitor. Notes: Item Location: Edgerton, MN 56128 Equipment Sold "AS IS, WHERE IS": All equipment/property is sold "AS IS, WHERE IS" with no warranty or guarantees, expressed or implied, No operational assessments have been made by DPA Auctions on this item, it has been photographed ONLY.



### #332 - 1999 John Deere 8410 (TH195)

1999 John Deere 8410 (TH195), 6,378 hours shown, new rubber on the back inside. Notes: Second owner. Item Location: Keota, IA 52248 Equipment Sold "AS IS, WHERE IS": All equipment/property is sold "AS IS, WHERE IS" with no warranty or guarantees, expressed or implied, No operational assessments have been made by DPA Auctions on this item, it has been photographed ONLY.



### #333 - 2010 Polaris Ranger 800xp (TH197)

2010 Polaris Ranger 800xp (TH197), 2 cylinder, 4-stroke, fuel injected, hydraulic disk breaks, 9 gallon fuel tank, seats 3, new tires last spring at about 75%, 693 hours shown. Notes: Item Location: Keota, IA 52248 Equipment Sold "AS IS, WHERE IS": All equipment/property is sold "AS IS, WHERE IS" with no warranty or guarantees, expressed or implied, No operational assessments have been made by DPA Auctions on this item, it has been photographed ONLY.



### #334 - 2006 Chevrolet Silverado 2500 HD Duramax (TH196)

2006 Chevrolet Silverado 2500 HD Duramax (TH196), 6.6L V8 OHV 32V turbo diesel, AM/FM, 3/4 ton short box, extended cab, cruise, A/C, shows 227,211 miles. Notes: Second owner. Item Location: Keota, IA 52248 Equipment Sold "AS IS, WHERE IS": All equipment/property is sold "AS IS, WHERE IS" with no warranty or guarantees, expressed or implied, No operational assessments have been made by DPA Auctions on this item, it has been photographed ONLY.



### #335 - 1998 IHC 4900 LP Truck (PZ7978, Unit 357)

1998 IHC 4900 LP Truck (PZ7978, Unit 357), diesel engine, 6 speed transmission, heat, Am/Fm radio, single axle, 3200 gallon LP tank (S/N A-0977), meter, hose reel, shows 254,701 miles. Notes: Item Location: Wabash, IN 46992 Equipment Sold "AS IS, WHERE IS": All equipment/property is sold "AS IS, WHERE IS" with no warranty or guarantees, expressed or implied, No operational assessments have been made by DPA Auctions on this item, it has been photographed ONLY.



### #336 - 2002 IHC 4400 LP Truck (PZ7979, Unit 816)

2002 IHC 4400 LP Truck (PZ7979, Unit 816), DT466 diesel engine, 6 speed transmission, air conditioning, heat, Am/Fm CD stereo, single axle, 2002 Westmor 3499 LP tank (S/N H287), LC measuring chamber, Mid Com 8000 meter & printer, 11R22.5 tires, shows 205,098 miles. Notes: Item Location: Angola, IN 46703 Equipment Sold "AS IS, WHERE IS": All equipment/property is sold "AS IS, WHERE IS" with no warranty or guarantees, expressed or implied, No operational assessments have been made by DPA Auctions on this item, it has been photographed ONLY.



### #337 - 2008 Wilson Hopper Bottom Trailer (PD572)

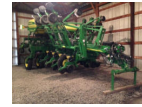
2008 Wilson Hopper Bottom Trailer (PD572), 41 Foot, 66 inch sides, stainless steel front corner, stainless steel back, 11-24-5 tires, extra light package, aluminum wheels inside and out, new brakes, electric tarp with remote, standard hoppers, one owner since new, excellent condition, air ride suspension. Notes: Item Location: Princeville, IL 61559 Equipment Sold "AS IS, WHERE IS": All equipment/property is sold "AS IS, WHERE IS" with no warranty or guarantees, expressed or implied, No operational assessments have been made by DPA Auctions on this item, it has been photographed ONLY.



---

### #338 - 2009 John Deere 1790 CCS 12-23 Planter (PD571)

2009 John Deere 1790 CCS 12-23 Planter (PD571), John Deere 350 monitor, mechanical drive, pneumatic down force, rubber closing wheels, wavy no till coulters, Precision E-set corn disc, John Deere row command shut offs, low acres, excellent condition, Digistar scale on planter, 3 sensors, no indicator box. Notes: Item Location: Princeville, IL 61559 Equipment Sold "AS IS, WHERE IS": All equipment/property is sold "AS IS, WHERE IS" with no warranty or guarantees, expressed or implied, No operational assessments have been made by DPA Auctions on this item, it has been photographed ONLY.



---

### #339 - 2007 Custom Combine/Sprayer Trailer (DL186)

2007 Custom Combine/Sprayer Trailer (DL186), 53'x96", folds out to 12', air ride suspension. Notes: Item Location: Edgerton, MN 56128 Equipment Sold "AS IS, WHERE IS": All equipment/property is sold "AS IS, WHERE IS" with no warranty or guarantees, expressed or implied, No operational assessments have been made by DPA Auctions on this item, it has been photographed ONLY.



---

### #340 - 1985 Brae Dry Van Water Trailer (DL187)

1985 Brae Dry Van Water Trailer (DL187), 45' x 102", 3 1600gal enduraplus tanks all plumbed 3", room for 4 pallets on back. Notes: Item Location: Edgerton, MN 56128 Equipment Sold "AS IS, WHERE IS": All equipment/property is sold "AS IS, WHERE IS" with no warranty or guarantees, expressed or implied, No operational assessments have been made by DPA Auctions on this item, it has been photographed ONLY.



---

### #341 - 1992 Econoline Club Wagon Van (MK044)

1992 Econoline Club Wagon Van (MK044), 4.6L inline 6, Am/Fm radio, 8 passenger, half ton van, cruiz control, heating works, A/C not working, all doors work well, wind sheild has no cracks, service records will accompany vehicle, shows 144600 miles. Notes: Bought new by Randolph Public Schools and has been Maintanted in their shop since then. Item Location: Randolph, NE 68771 Equipment Sold "AS IS, WHERE IS": All equipment/property is sold "AS IS, WHERE IS" with no warranty or guarantees, expressed or implied, No operational assessments have been made by DPA Auctions on this item, it has been photographed ONLY.



---

### #342 - Blu-Jet Fertilizer AT4610 Coulters (23) (MK041)

Blu-Jet Fertilizer AT4610 Coulters (23) (MK041), for a side dress machine, coulters measure 17.5" to 19", injector nozzles included with side120 orifice, will mount to any 7x7 toolbar, came off of an AT4610. Notes: Seller will load for free. Item Location: Randolph, NE 68771 Equipment Sold "AS IS, WHERE IS": All equipment/property is sold "AS IS, WHERE IS" with no warranty or guarantees, expressed or implied, No operational assessments have been made by DPA Auctions on this item, it has been photographed ONLY.



---

### #343 - John Deere Planter Coulters (24) (MK043)

John Deere Planter Coulters (24) (MK043), mounts to john deere, 13 wave, discs measure 16" in diameter. Notes: Excellent condition. Seller will load for free. Item Location: Randolph, NE 68771 Equipment Sold "AS IS, WHERE IS": All equipment/property is sold "AS IS, WHERE IS" with no warranty or guarantees, expressed or implied, No operational assessments have been made by DPA Auctions on this item, it has been photographed ONLY.



---

### #344 - Yetter Floating Trash Whippers (24) (MK042)

Yetter Floating Trash Whippers (24) (MK042), shark tooth style wheels that have good sharp edge remaining, 2" wide depth bands, mounts to any John Deere row units, extended arms that can be used with coulters, no mounting hardware included. Notes: Seller will load for free. Item Location: Randolph, NE 68771 Equipment Sold "AS IS, WHERE IS": All equipment/property is sold "AS IS, WHERE IS" with no warranty or guarantees, expressed or implied, No operational assessments have been made by DPA Auctions on this item, it has been photographed ONLY.



---

### #345 - Load Cells Killbros 1800 Grain Cart (EG350)

Load Cells Killbros 1800 Grain Cart (EG350). Notes: Item Location: Worthington, IN 47471 Equipment Sold "AS IS, WHERE IS": All equipment/property is sold "AS IS, WHERE IS" with no warranty or guarantees, expressed or implied, No operational assessments have been made by DPA Auctions on this item, it has been photographed ONLY.





### #346 - USC Portable Seed Pod (EG347)

USC Portable Seed Pod (EG347), This seed pod is in good condition, has been used in previous planting seasons and no longer needed, this pod is capable of holding 350 units that has a single compartment and all steel constructed, this unit has a larger lid opening to make filling easy, DOT legal and has folding legs with extra supports as shown in pictures, Unloading chute is included, 12 foot, 8 foot 4 inches wide. Notes: Unit is 12ft Long, 8ft 4in Wide. Seller will assist with loading. Item Location: Worthington, IN 47471 Equipment Sold "AS IS, WHERE IS": All equipment/property is sold "AS IS, WHERE IS" with no warranty or guarantees, expressed or implied, No operational assessments have been made by DPA Auctions on this item, it has been photographed ONLY.



### #347 - Bayer Pro-Ized Seed Treatment (EG351)

Bayer Pro-Ized Seed Treatment (EG351), brand new, never been opened, 15 gallons of red seed treatment. Notes: Item Location: Worthington, IN 47471 Equipment Sold "AS IS, WHERE IS": All equipment/property is sold "AS IS, WHERE IS" with no warranty or guarantees, expressed or implied, No operational assessments have been made by DPA Auctions on this item, it has been photographed ONLY.



### #348 - Lantech Pallet Wrapper (EG346)

Lantech Pallet Wrapper (EG346), 9 foot long, 4 foot wide, 10 foot tall, worked excellent for several years of use until the back-up battery failed and was told the memory board would need replaced, unit is not needed for use and ready for a new home. Notes: Seller will assist with loading. Needs repaired before use. Item Location: Worthington, IN 47471 Equipment Sold "AS IS, WHERE IS": All equipment/property is sold "AS IS, WHERE IS" with no warranty or guarantees, expressed or implied, No operational assessments have been made by DPA Auctions on this item, it has been photographed ONLY.



### #349 - Rolling Cart (EG348)

Rolling Cart (EG348), Came from GE refrigerator factory, in decent condition, 4.5 foot long, 2.5' wide. Notes: Item Location: Worthington, IN 47471 Equipment Sold "AS IS, WHERE IS": All equipment/property is sold "AS IS, WHERE IS" with no warranty or guarantees, expressed or implied, No operational assessments have been made by DPA Auctions on this item, it has been photographed ONLY.



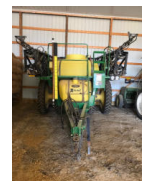
### #350 - Heavy Duty Dolly (EG349)

Heavy Duty Dolly (EG349), Came from GE refrigerator factory, in decent condition, 3 foot 4 inches long, 2 foot wide. Notes: Seller will assist with loading. Item Location: Worthington, IN 47471 Equipment Sold "AS IS, WHERE IS": All equipment/property is sold "AS IS, WHERE IS" with no warranty or guarantees, expressed or implied, No operational assessments have been made by DPA Auctions on this item, it has been photographed ONLY.



### #351 - 2008 ta1200 Sprayer (AL194 )

2008 ta1200 Sprayer (AL194 ), 60/90 booms , 5 section, former, Fencerow nozzles, Raven 440 and Sky tracker. Notes: Item Location: Ackley, IA 50601 Equipment Sold "AS IS, WHERE IS": All equipment/property is sold "AS IS, WHERE IS" with no warranty or guarantees, expressed or implied, No operational assessments have been made by DPA Auctions on this item, it has been photographed ONLY.



### #352 - DMI Coulter Side Dress Bar (AL192)

DMI Coulter Side Dress Bar (AL192), 1300 gallon tank, hydraulic pump, Raven 440 and Sky Tracker, tires 420-30R46. Notes: Item Location: Ackley, IA 50601 Equipment Sold "AS IS, WHERE IS": All equipment/property is sold "AS IS, WHERE IS" with no warranty or guarantees, expressed or implied, No operational assessments have been made by DPA Auctions on this item, it has been photographed ONLY.



### #353 - Blu Jet at3000 11/15 side dress bar (AL193)

Blu Jet at3000 11/15 side dress bar (AL193), 360 y drops, hydraulic pump, 1000 gallon tank, Raven and Sky Tracker. Notes: Item Location: Ackley, IA 50601 Equipment Sold "AS IS, WHERE IS": All equipment/property is sold "AS IS, WHERE IS" with no warranty or guarantees, expressed or implied, No operational assessments have been made by DPA Auctions on this item, it has been photographed ONLY.



---

### #354 - Parker 505 Wagon (AL191)

Parker 505 Wagon (AL191), tires 425/65R22.5, lights, viewing windows, access latter. Notes: Item Location: Ackley, IA 50601 Equipment Sold "AS IS, WHERE IS": All equipment/property is sold "AS IS, WHERE IS" with no warranty or guarantees, expressed or implied, No operational assessments have been made by DPA Auctions on this item, it has been photographed ONLY.



---

### #355 - 2006 mxm175 Tractor (A1195)

2006 mxm175 Tractor (A1195), 18 speed power shift, 4hyd outlets, 540/1000 pto, 10 front weights, back tires 14.9 R46 on 13" rim, back tires 380/25R30, shows 2,330 hours. Notes: Item Location: Ackley, IA 50601 Equipment Sold "AS IS, WHERE IS": All equipment/property is sold "AS IS, WHERE IS" with no warranty or guarantees, expressed or implied, No operational assessments have been made by DPA Auctions on this item, it has been photographed ONLY.



---

### #356 - IHC 1206 Wide Front Tractor (PZ7972)

IHC 1206 Wide Front Tractor (PZ7972), Turbo diesel engine, 10.00-16SL front tires, 18.4R38 rear tires, dual PTO, 2 port hydraulics, 3-point. Notes: NO TA, elimination kit installed. Item Location: New Sharon, IA 50207 Equipment Sold "AS IS, WHERE IS": All equipment/property is sold "AS IS, WHERE IS" with no warranty or guarantees, expressed or implied, No operational assessments have been made by DPA Auctions on this item, it has been photographed ONLY.



---

### #357 - Kuhn Knight ProTwin Slinger 8024 Manure Spreader (KMK431)

Kuhn Knight ProTwin Slinger 8024 Manure Spreader (KMK431), side slinger manure spreader, 2400 gallon, dual auger, left hand side discharge, hydraulic gate and discharge flap, small 1000 pto., 19L- 16.1 tires. Notes: Has some auger flighting damage from a rock. Augers spin freely, just bent flighting. Item Location: Seymour, IL 61875 Equipment Sold "AS IS, WHERE IS": All equipment/property is sold "AS IS, WHERE IS" with no warranty or guarantees, expressed or implied, No operational assessments have been made by DPA Auctions on this item, it has been photographed ONLY.



---

### #358 - 2006 Willmar Wrangler 4550 Loader (KMK430)

2006 Willmar Wrangler 4550 Loader (KMK430), Duetz BF 4M 2011 diesel engine, hydrostatic transmission, lights, ROPS, 31 x 15.5- 15 tires, no bucket, shows 5280 hours. Notes: Bought New. Never been in fertilizer. Used on cattle farm and loading woodchips. Item Location: Seymour, IL 61875 Equipment Sold "AS IS, WHERE IS": All equipment/property is sold "AS IS, WHERE IS" with no warranty or guarantees, expressed or implied, No operational assessments have been made by DPA Auctions on this item, it has been photographed ONLY.



---

### #359 - 1994 Dorsey 53' Step Deck Flatbed Trailer (KMK432)

1994 Dorsey 53' Step Deck Flatbed Trailer (KMK432), 53' foot long, 10' top deck, 42' bottom deck, 102" wide, 10' spread axle, air ride suspension, 255/ 70 R 22.5 tires, 6 of the tires at 80% tread, 2 tires on the left are at 30%-50% tread. Notes: Wood floor is not in the best shape. Used to haul hay for the last 10 years. Item Location: Seymour, IL 61875 Equipment Sold "AS IS, WHERE IS": All equipment/property is sold "AS IS, WHERE IS" with no warranty or guarantees, expressed or implied, No operational assessments have been made by DPA Auctions on this item, it has been photographed ONLY.



---

### #360 - 2004 Ford F-350 XLT Super Duty Flatbed (KMK433)

2004 Ford F-350 XLT Super Duty Flatbed (KMK433), regular cab, dually, 4 X 4, 6.0L power stroke diesel engine, automatic transmission, AM/FM/CD radio, heat and air conditioning, power windows, power locks, power driver seat, trailer brake controller, steel flatbed, under bed storage boxes on both sides, 5th wheel hitch, ag hitch receiver, LT 235/ 85 R 16 tires, shows 146243 miles. Notes: Bed has some rust, dent in front bumper. Item Location: Seymour, IL 61875 Equipment Sold "AS IS, WHERE IS": All equipment/property is sold "AS IS, WHERE IS" with no warranty or guarantees, expressed or implied, No operational assessments have been made by DPA Auctions on this item, it has been photographed ONLY.



---

### #361 - 2007 Cadillac Escalade ESV (KMK428)

2007 Cadillac Escalade ESV (KMK428), white diamond with black leather interior, AWD, Vortec 6.2L gas engine, cruise control, tilt steering wheel, power windows, power locks, programmable power seats, heated and cooled front seats, heated middle seats, second row bucket seats, fold down 3rd row seating, rear radio/temperature control, navigation, XM ready, 6 disc CD player, MP3, AM/FM radio, Bose surround sound stereo system, dual temperature, power sliding sun roof, rear back up camera, DVD player with 3 TV screens, 4 wireless headsets with remote, power rear door, power folding mirrors, remote start, 2 keys and key fobs, 18' rims, Michelin 265/ 70 R 18 tires, shows 116,902 miles. Notes: Gold Package Edition. Vehicle has been serviced regularly at 3,000 mile intervals, all service intervals have been met, extra serpentine belt and AC belt, does not use oil, stored inside, leather seats in excellent shape, reliable vehicle. Item Location: Davenport, NE 68335 Equipment Sold "AS IS, WHERE IS": All equipment/property is sold "AS IS, WHERE IS" with no warranty or guarantees, expressed or implied, No operational assessments have been made by DPA Auctions on this item, it has been photographed ONLY.



### #362 - 2004 Demco Conquest Sprayer (PD563)

2004 Demco Conquest Sprayer (PD563), 1100 Gallon Tank, 80 foot booms, 20 inch spacing with triple nozzles, foam marker with 60 gallon tank, Hypro 9306 hydraulic pump, axle adjustable 60-120 inches, all hydraulic boom fold, raise & lower with switch box, 3 inch refill, 75 gallon rinse tank, was using Greenstar for rate control, Controller not included, 320-90/R46 tires. Notes: Item Location: Newton, IL 62448 Equipment Sold "AS IS, WHERE IS": All equipment/property is sold "AS IS, WHERE IS" with no warranty or guarantees, expressed or implied, No operational assessments have been made by DPA Auctions on this item, it has been photographed ONLY.



### #363 - New Endura-Plas 60 Gallon DEF Tank & Pump Unit (PD561)

New Endura-Plas 60 Gallon DEF Tank & Pump Unit (PD561), 9-GPM 12 volt stainless pump with protective cover, poly nozzle with 20 foot discharge hose, 15 foot power cable with alligator clamps, drain plug in tank. Notes: Item Location: Newton, IL 62448 Equipment Sold "AS IS, WHERE IS": All equipment/property is sold "AS IS, WHERE IS" with no warranty or guarantees, expressed or implied, No operational assessments have been made by DPA Auctions on this item, it has been photographed ONLY.



### #364 - New Custom Roto-Mold 1600 Gallon Elliptical Tank (PD562)

New Custom Roto-Mold 1600 Gallon Elliptical Tank (PD562), with molded sump, yellow color, aprox. 138 inches long, 78 foot wide, 55 tall, kept in shed. Notes: Item Location: Newton, IL 62448 Equipment Sold "AS IS, WHERE IS": All equipment/property is sold "AS IS, WHERE IS" with no warranty or guarantees, expressed or implied, No operational assessments have been made by DPA Auctions on this item, it has been photographed ONLY.



### #365 - DMI Liquid Side Dress Bar (PD564)

DMI Liquid Side Dress Bar (PD564), 11 yetter units with injector nozzle, hydraulic folding wings with gauge wheels, John Blue 4955 pump with ground drive, set up to pull a nurse wagon or use saddle tanks. Notes: Item Location: Newton, IL 62448 Equipment Sold "AS IS, WHERE IS": All equipment/property is sold "AS IS, WHERE IS" with no warranty or guarantees, expressed or implied, No operational assessments have been made by DPA Auctions on this item, it has been photographed ONLY.



### #366 - 12 Row 30" Blu Jet Strip Tool Bar (KMK429)

12 Row 30" Blu Jet Strip Tool Bar (KMK429), Land Tracker, 800 gallon poly liquid tank, front coulter bar, walking tandem axle, hydraulic wings, Blu Jet Max Pac AR700 row units, press wheels, double disk sealers, rear rolling basket covers, rear hitch to pull NH3 tank, Raven Iso Node control, 12.5L-15 SL tires. Notes: Item Location: Correctionville, IA 51016 Equipment Sold "AS IS, WHERE IS": All equipment/property is sold "AS IS, WHERE IS" with no warranty or guarantees, expressed or implied, No operational assessments have been made by DPA Auctions on this item, it has been photographed ONLY.



### #367 - New 2013 Tender Unit (MH236)

New 2013 Tender Unit (MH236), new, never used tender unit, CT Fabrication, 1100 cu/ft. capacity, 480V 3ph 5HP electric motor, belt & pulley drive, 8" Westfield rear discharge auger, slide gate above auger, unit is setup to fill with Pneumatics with filter box on exhaust air or can be filled from top, totally sealed/weather proof, 20" top manway, 20" bottom manway for access or clean out, (4) four adjustable legs for parking, spring suspension, brand new dual tires, 11R-22.5, hub pilot steel wheels. Notes: No motor switch or HV wiring, unit is titled and DOT compliant. However, unit was designed to store product in a stationary position and was not intended to transport a load on the highway. Item Location: Belleville, KS 66935 Equipment Sold "AS IS, WHERE IS": All equipment/property is sold "AS IS, WHERE IS" with no warranty or guarantees, expressed or implied, No operational assessments have been made by DPA Auctions on this item, it has been photographed ONLY.



### #368 - New 2013 Tender Unit (MH237)

New 2013 Tender Unit (MH237), new, never used tender unit, CT Fabrication, 1100 cu/ft. capacity, 8" Westfield rear discharge auger, slide gate above auger, unit is setup to fill with Pneumatics with filter box on exhaust air or can be filled from top, totally sealed/weather proof, 20" top manway, 20" bottom manway for access or clean out, (4) four adjustable legs for parking, spring suspension, brand new dual tires, 11R-22.5, hub pilot steel wheels. Notes: No auger motor or drive pulleys, no motor switch or HV wiring, unit is titled and DOT compliant. However, unit was designed to store product in a stationary position and was not intended to transport a load on the highway. Item Location: Belleville, KS 66935 Equipment Sold "AS IS, WHERE IS": All equipment/property is sold "AS IS, WHERE IS" with no warranty or guarantees, expressed or implied, No operational assessments have been made by DPA Auctions on this item, it has been photographed ONLY.



### #369 - Arts-Way 425A Grinder Mixer (KMK434)

Arts-Way 425A Grinder Mixer (KMK434), portable, 129 cubic feet, 540 pto., manual swing auger, electronic scale, 10.0-15 tires. Notes: Item Location: West Point, NE 68788 Equipment Sold "AS IS, WHERE IS": All equipment/property is sold "AS IS, WHERE IS" with no warranty or guarantees, expressed or implied, No operational assessments have been made by DPA Auctions on this item, it has been photographed ONLY.



### #370 - Soil Mover 5 Yard Scraper (KMK427)

Soil Mover 5 Yard Scraper (KMK427), model 50 RF, 5 yard bowl, forced ejection, hydraulic control. Notes: Item Location: West Point, NE 68788 Equipment Sold "AS IS, WHERE IS": All equipment/property is sold "AS IS, WHERE IS" with no warranty or guarantees, expressed or implied, No operational assessments have been made by DPA Auctions on this item, it has been photographed ONLY.



### #371 - Hog Feeders (CG388)

Hog Feeders (CG388), all in like new shape, no problems, 4 years old, dry tub feeder, 48" wide, poly and stainless steel, nursery, wean to finish. Notes: Item Location: Postville, IA 52162 Equipment Sold "AS IS, WHERE IS": All equipment/property is sold "AS IS, WHERE IS" with no warranty or guarantees, expressed or implied, No operational assessments have been made by DPA Auctions on this item, it has been photographed ONLY.



### #372 - 10 Hog Feeders (CG389)

10 Hog Feeders (CG389), all in like new shape, no problems, 4 years old, dry tub feeder, 48" wide, poly and stainless steel, nursery, wean to finish. Notes: Item Location: Postville, IA 52162 Equipment Sold "AS IS, WHERE IS": All equipment/property is sold "AS IS, WHERE IS" with no warranty or guarantees, expressed or implied, No operational assessments have been made by DPA Auctions on this item, it has been photographed ONLY.



### #373 - 10 Hog Feeders (CG390)

10 Hog Feeders (CG390), all in like new shape, no problems, 4 years old, dry tub feeder, 48" wide, poly and stainless steel, nursery, wean to finish. Notes: Item Location: Postville, IA 52162 Equipment Sold "AS IS, WHERE IS": All equipment/property is sold "AS IS, WHERE IS" with no warranty or guarantees, expressed or implied, No operational assessments have been made by DPA Auctions on this item, it has been photographed ONLY.



### #374 - 10 Hog Feeders (CG391)

10 Hog Feeders (CG391), all in like new shape, no problems, 4 years old, dry tub feeder, 48" wide, poly and stainless steel, nursery, wean to finish. Notes: Item Location: Postville, IA 52162 Equipment Sold "AS IS, WHERE IS": All equipment/property is sold "AS IS, WHERE IS" with no warranty or guarantees, expressed or implied, No operational assessments have been made by DPA Auctions on this item, it has been photographed ONLY.



### #375 - GSI Air Stream 12' Portable Grain Dryer (KMK436)

GSI Air Stream 12' Portable Grain Dryer (KMK436), Air Stream, model 11120i-12-LLSW, tandem axle, continuous flow, LP or natural gas, updated Air Stream controls, by-pass moisture sampler, previous owner increased dryer capacity. Notes: Tires and wheels are not included in this lot. Loading services will be provided. Hauling services can be provided for an additional fee. Item Location: Neola, IA 51559 Equipment Sold "AS IS, WHERE IS": All equipment/property is sold "AS IS, WHERE IS" with no warranty or guarantees, expressed or implied, No operational assessments have been made by DPA Auctions on this item, it has been photographed ONLY.



### #376 - Case DH4 Trencher (KMK362)

Case DH4 Trencher (KMK362), model DH4, Case four cylinder diesel engine, 2 post roll bar, articulated tractor body, chain trencher attachment, 6' adjustable push blade, 5,000 lbs. base operating weight, 31 x 15.50 - 15 NHS tires, shows 940 hours. Notes: Item Location: Neola, IA 51559 Equipment Sold "AS IS, WHERE IS": All equipment/property is sold "AS IS, WHERE IS" with no warranty or guarantees, expressed or implied, No operational assessments have been made by DPA Auctions on this item, it has been photographed ONLY.



### #377 - 2012 Hutchinson Pile Unloader (PD560)

2012 Hutchinson Pile Unloader (PD560), 3 Point, 10,000 bushel per hour. Notes: Item Location: Maddock, ND 58348 Equipment Sold "AS IS, WHERE IS": All equipment/property is sold "AS IS, WHERE IS" with no warranty or guarantees, expressed or implied, No operational assessments have been made by DPA Auctions on this item, it has been photographed ONLY.



### #378 - 1998 Sky Jack 3219 Scissor Lift (MH239)

1998 Sky Jack 3219 Scissor Lift (MH239), Sky Jack scissor lift with platform height of 19ft, drives and works good. Notes: Item Location: Wichita, KS 67219 Equipment Sold "AS IS, WHERE IS": All equipment/property is sold "AS IS, WHERE IS" with no warranty or guarantees, expressed or implied, No operational assessments have been made by DPA Auctions on this item, it has been photographed ONLY.





### #379 - 2008 Case IH 1200pt (DL185)

2008 Case IH 1200pt (DL185), 16 row, vacuum planter, bulk fill with only 4000 acres of use, includes a 600 series monitor, all new twist lock seed tubes, new hydronic reservoir (upgraded tank), new bulk tank seals, all new bulk tank latches and yetter trash wheels. Notes: All units are upgraded to 1250 seed units with one season of use - only 500 acres. The planter has dry chemical box for every unit and is currently calibrated for force insecticide and all seed disks are in great shape there are bean discs and corn discs. Item Location: Pontiac, IL 61764 Equipment Sold "AS IS, WHERE IS": All equipment/property is sold "AS IS, WHERE IS" with no warranty or guarantees, expressed or implied, No operational assessments have been made by DPA Auctions on this item, it has been photographed ONLY.



### #380 - 1998 Chevrolet 6500 Lift Truck (TR3875)

1998 Chevrolet 6500 Lift Truck (TR3875), Cat diesel engine, 6 speed transmission, AM/FM radio, heat, A/C, two man bucket lift, hydraulic, single axle, shows 286,782 miles. Notes: One hydraulic cylinder has a leak. This truck starts and runs great. Item Location: Lake Odessa, MI 48849 Equipment Sold "AS IS, WHERE IS": All equipment/property is sold "AS IS, WHERE IS" with no warranty or guarantees, expressed or implied, No operational assessments have been made by DPA Auctions on this item, it has been photographed ONLY.



### #381 - Kill Bros (DR7846)

Kill Bros (DR7846), 225 bushel gravity flow wagon, 4 wheel steerable gear. Notes: Item Location: Clinton, KY 42031 Equipment Sold "AS IS, WHERE IS": All equipment/property is sold "AS IS, WHERE IS" with no warranty or guarantees, expressed or implied, No operational assessments have been made by DPA Auctions on this item, it has been photographed ONLY.



### #382 - Nissan (DR7731)

Nissan (DR7731), gas engine, 2 stage mast, 5000 lbs capacity, pneumatic tires, OROPS. Notes: This lift NEEDS WATER pump and BATTERY. Item Location: Clinton, KY 42031 Equipment Sold "AS IS, WHERE IS": All equipment/property is sold "AS IS, WHERE IS" with no warranty or guarantees, expressed or implied, No operational assessments have been made by DPA Auctions on this item, it has been photographed ONLY.



### #383 - Ag Systems Applicator (DR7842, Unit 4)

Ag Systems Applicator (DR7842, Unit 4), model 1500, 15 knife liquid side dress applicator, (FOR PARTS), 800 gallon poly tank is CRACKED, front coulters, ground drive pump. Notes: Tank is cracked and LEAKS, this applicator is for parts. Item Location: Clinton, KY 42031 Equipment Sold "AS IS, WHERE IS": All equipment/property is sold "AS IS, WHERE IS" with no warranty or guarantees, expressed or implied, No operational assessments have been made by DPA Auctions on this item, it has been photographed ONLY.



### #384 - 2002 Swinger 2000 (DR7845)

2002 Swinger 2000 (DR7845), diesel engine shuttle shift drive, OROPS canopy, NEEDS REAR END WORK, 4X4. Notes: Engine runs but rear end needs work, will also NEED BATTERY. Item Location: Clinton, KY 42031 Equipment Sold "AS IS, WHERE IS": All equipment/property is sold "AS IS, WHERE IS" with no warranty or guarantees, expressed or implied, No operational assessments have been made by DPA Auctions on this item, it has been photographed ONLY.



### #385 - 1974 Trailmobile (DR7844, Unit 284)

1974 Trailmobile (DR7844, Unit 284), 6000 gallon liquid transport trailer, tank HAS SEAM LEAK AT BOTTOM, tandem axle, gas engine w 3" pump ran when it was lasat used 5 years ago. Notes: This trailer has been sitting for 5 years. PLEASE ALLOW AT LEAST 60 DAYS FOR TITLE TRANSFER. Item Location: Clinton, KY 42031 Equipment Sold "AS IS, WHERE IS": All equipment/property is sold "AS IS, WHERE IS" with no warranty or guarantees, expressed or implied, No operational assessments have been made by DPA Auctions on this item, it has been photographed ONLY.



### #387 - 1984 International (DR7839, Unit 221)

1984 International (DR7839, Unit 221), Cummins diesel engine, (NON RUNNER), 10 speed transmission, tandem axle full screw, Tyler 15 ton hydraulic dry fertilizer tender box, NO AUGER, roll over tarp, 22.5 tires, shows 261,945 miles. Notes: Item Location: Clinton, KY 42031 Equipment Sold "AS IS, WHERE IS": All equipment/property is sold "AS IS, WHERE IS" with no warranty or guarantees, expressed or implied, No operational assessments have been made by DPA Auctions on this item, it has been photographed ONLY.



### #388 - 1991 International 8200 (DR7840, Unit 307)

1991 International 8200 (DR7840, Unit 307), Cummins diesel engine, 10 speed transmission, single axle, air brakes, Tyler 8 ton stainless steel hydraulic dry fertilizer tender box, rear auger, shows 467,400 miles. Notes: Cab has rust. Engine runs fine, truck will need batteries. PLEASE ALLOW AT LEAST 60 DAYS FOR TITLE TRANSFER. Item Location: Clinton, KY 42031 Equipment Sold "AS IS, WHERE IS": All equipment/property is sold "AS IS, WHERE IS" with no warranty or guarantees, expressed or implied, No operational assessments have been made by DPA Auctions on this item, it has been photographed ONLY.



### #389 - Parker Weigh Wagon (DR7843)

Parker Weigh Wagon (DR7843), model 1500, single axle hydraulic weigh wagon, motor DOES NOT RUN, NO SCALE HEAD. Notes: Power unit engine DOES NOT RUN. Item Location: Clinton, KY 42031 Equipment Sold "AS IS, WHERE IS": All equipment/property is sold "AS IS, WHERE IS" with no warranty or guarantees, expressed or implied, No operational assessments have been made by DPA Auctions on this item, it has been photographed ONLY.



### #390 - John Deere Planter Wheels (DR7750)

John Deere Planter Wheels (DR7750), 24 press wheels and 24 tires all for 12 row 1775 planter. Notes: Item Location: Owatonna, MN 55060 Equipment Sold "AS IS, WHERE IS": All equipment/property is sold "AS IS, WHERE IS" with no warranty or guarantees, expressed or implied, No operational assessments have been made by DPA Auctions on this item, it has been photographed ONLY.



### #391 - Hankook 11R22.5 tires (TR3529)

Hankook 11R22.5 tires (TR3529) (4) tires, Hankook Smart Flex DL12 14 PR. Notes: Item Location: Murphysboro, IL 62966 Equipment Sold "AS IS, WHERE IS": All equipment/property is sold "AS IS, WHERE IS" with no warranty or guarantees, expressed or implied, No operational assessments have been made by DPA Auctions on this item, it has been photographed ONLY.



### #392 - Hankook 285/75/24.5 tires (TR3530)

Hankook 285/75/24.5 tires (TR3530) (4) tires, Hankook Smart Flex DL12 14 PR. Notes: Item Location: Murphysboro, IL 62966 Equipment Sold "AS IS, WHERE IS": All equipment/property is sold "AS IS, WHERE IS" with no warranty or guarantees, expressed or implied, No operational assessments have been made by DPA Auctions on this item, it has been photographed ONLY.



### #393 - Hankook 285/75/24.5 tires (TR3531)

Hankook 285/75/24.5 tires (TR3531) (4) tires, Hankook Smart Flex DL12 14 PR. Notes: Item Location: Murphysboro, IL 62966 Equipment Sold "AS IS, WHERE IS": All equipment/property is sold "AS IS, WHERE IS" with no warranty or guarantees, expressed or implied, No operational assessments have been made by DPA Auctions on this item, it has been photographed ONLY.



### #394 - Goodyear 11R22.5 tires (TR3532)

Goodyear 11R22.5 tires (TR3532) (4) tires, G 741, MSD Load Range H. Notes: Item Location: Murphysboro, IL 62966 Equipment Sold "AS IS, WHERE IS": All equipment/property is sold "AS IS, WHERE IS" with no warranty or guarantees, expressed or implied, No operational assessments have been made by DPA Auctions on this item, it has been photographed ONLY.



### #395 - Goodyear 11R22.5 tires (TR3533)

Goodyear 11R22.5 tires (TR3533) (4) tires, G 741, MSD Load Range H. Notes: Item Location: Murphysboro, IL 62966 Equipment Sold "AS IS, WHERE IS": All equipment/property is sold "AS IS, WHERE IS" with no warranty or guarantees, expressed or implied, No operational assessments have been made by DPA Auctions on this item, it has been photographed ONLY.



### #396 - Goodyear 11R24.5 tires (TR3534)

Goodyear 11R24.5 tires (TR3534) (4) tires, Armor Max, MSD Load Range H. Notes: Item Location: Murphysboro, IL 62966 Equipment Sold "AS IS, WHERE IS": All equipment/property is sold "AS IS, WHERE IS" with no warranty or guarantees, expressed or implied, No operational assessments have been made by DPA Auctions on this item, it has been photographed ONLY.



### #397 - Goodyear 11R22.5 tires (TR3535)

Goodyear 11R22.5 tires (TR3535) (4) tires, Armor Max, MSD Load Range H. Notes: Item Location: Murphysboro, IL 62966 Equipment Sold "AS IS, WHERE IS": All equipment/property is sold "AS IS, WHERE IS" with no warranty or guarantees, expressed or implied, No operational assessments have been made by DPA Auctions on this item, it has been photographed ONLY.



### #398 - Samson 14-17.5NHS tires (TR3536)

Samson 14-17.5NHS tires (TR3536), Samson 14-17.5NHS tires, (2) tires, Premium skid steer tires. Notes: Item Location: Murphysboro, IL 62966 Equipment Sold "AS IS, WHERE IS": All equipment/property is sold "AS IS, WHERE IS" with no warranty or guarantees, expressed or implied, No operational assessments have been made by DPA Auctions on this item, it has been photographed ONLY.



### #399 - Alliance 16.9R28 tire (TR3637)

Alliance 16.9R28 tire (TR3637), (1) 16.9R28 front drive radial HT. Notes: Item Location: Murphysboro, IL 62966 Equipment Sold "AS IS, WHERE IS": All equipment/property is sold "AS IS, WHERE IS" with no warranty or guarantees, expressed or implied, No operational assessments have been made by DPA Auctions on this item, it has been photographed ONLY.



### #400 - Goodyear 28L-26 tire (TR3538)

Goodyear 28L-26 tire (TR3538), (1) 28-L-26 tire, Dyna Torque II, 12 Ply. Notes: Item Location: Murphysboro, IL 62966 Equipment Sold "AS IS, WHERE IS": All equipment/property is sold "AS IS, WHERE IS" with no warranty or guarantees, expressed or implied, No operational assessments have been made by DPA Auctions on this item, it has been photographed ONLY.



### #401 - Goodyear LT225/75R16 tires (TR3541)

Goodyear LT225/75R16 tires (TR3541), (6) LT225/75R16 tires, Goodyear Wrangler Duratrac, Load Range E. Notes: Item Location: Murphysboro, IL 62966 Equipment Sold "AS IS, WHERE IS": All equipment/property is sold "AS IS, WHERE IS" with no warranty or guarantees, expressed or implied, No operational assessments have been made by DPA Auctions on this item, it has been photographed ONLY.



### #402 - Goodyear P265/60R18 tires (TR3542)

Goodyear P265/60R18 tires (TR3542), (4) P265/60R18 tires, Goodyear Wrangler SR-A, Load Range SL. Notes: Item Location: Murphysboro, IL 62966 Equipment Sold "AS IS, WHERE IS": All equipment/property is sold "AS IS, WHERE IS" with no warranty or guarantees, expressed or implied, No operational assessments have been made by DPA Auctions on this item, it has been photographed ONLY.



### #403 - Goodyear P235/50R18 tires (TR3543)

Goodyear P235/50R18 tires (TR3543), (5) P235/50R18 tires, Goodyear Eagle RS-A, Load Range XL. Notes: Item Location: Murphysboro, IL 62966 Equipment Sold "AS IS, WHERE IS": All equipment/property is sold "AS IS, WHERE IS" with no warranty or guarantees, expressed or implied, No operational assessments have been made by DPA Auctions on this item, it has been photographed ONLY.



### #404 - Goodyear P235/50R18 tires (TR3544)

Goodyear P235/50R18 tires (TR3544), (5) P235/50R18 tires, Goodyear Eagle RS-A, Load Range XL. Notes: Item Location: Murphysboro, IL 62966 Equipment Sold "AS IS, WHERE IS": All equipment/property is sold "AS IS, WHERE IS" with no warranty or guarantees, expressed or implied, No operational assessments have been made by DPA Auctions on this item, it has been photographed ONLY.



### #405 - (4) Goodyear Flotation Tires/Rims (NP6139)

(4) Goodyear Flotation Tires/Rims (NP6139), DT812, size 620/70R46, 12 bolt rim pattern, came off JD 4940 sprayer. Notes: Item Location: Hugoton, KS 67951 Equipment Sold "AS IS, WHERE IS": All equipment/property is sold "AS IS, WHERE IS" with no warranty or guarantees, expressed or implied, No operational assessments have been made by DPA Auctions on this item, it has been photographed ONLY.



### #406 - 1998 Merritt Grain Trailer (NP6138)

1998 Merritt Grain Trailer (NP6138), approx. 42' length, tandem axle, air ride suspension, manual roll tarp. Notes: PLEASE ALLOW AT LEAST 60 DAYS FOR TITLE TRANSFER. Item Location: Hugoton, KS 67951 Equipment Sold "AS IS, WHERE IS": All equipment/property is sold "AS IS, WHERE IS" with no warranty or guarantees, expressed or implied, No operational assessments have been made by DPA Auctions on this item, it has been photographed ONLY.



### #407 - R&R Minuteman Fertilizer Mixer (EG352)

R&R Minuteman Fertilizer Mixer (EG352), R&R 30 foot conveyor, no motors, mild steel augers will need replaced soon, hand crank to open bottom door scales is not working but is repairable, loading hopper gearbox seeps oil but is good, gearbox on top of mixer is nearly new, conveyor is 30 ft x 18 inches, conveyor top drive sprocket nearly new, conveyor gear box seeps oil but is good. Notes: Farm used last 20 years, operation changed and is no longer needed. S/N ending in 115 is conveyor. S/N ending in 75 is for the mixer. Item Location: Bonnie, IL 62816 Equipment Sold "AS IS, WHERE IS": All equipment/property is sold "AS IS, WHERE IS" with no warranty or guarantees, expressed or implied, No operational assessments have been made by DPA Auctions on this item, it has been photographed ONLY.



### #408 - 1995 Great Dane (DR7893)

1995 Great Dane (DR7893), 48' X 96" reefer trailer, tandem axle, rear cargo doors, 22.5 tires. Notes: Items inside trailer DO NOT SELL. Item Location: Audubon, IA 50025 Equipment Sold "AS IS, WHERE IS": All equipment/property is sold "AS IS, WHERE IS" with no warranty or guarantees, expressed or implied, No operational assessments have been made by DPA Auctions on this item, it has been photographed ONLY.



### #410 - DMI 4200 II (DR7883)

DMI 4200 II (DR7883), 16 knife pull type tool bar, hydraulic wings and gauge wheels, walking tandem axles, NO FLOW CONTROLS, front smooth coulters, double disc rear sealers. Notes: Item Location: Audubon, IA 50025 Equipment Sold "AS IS, WHERE IS": All equipment/property is sold "AS IS, WHERE IS" with no warranty or guarantees, expressed or implied, No operational assessments have been made by DPA Auctions on this item, it has been photographed ONLY.



### #411 - Polaris Razr 800 (DR7899)

Polaris Razr 800 (DR7899), gas engine, hi/lo transmission, OROPS, 4X4, rear hitch, shows 2851 miles, 303 hours. Notes: Item Location: Audubon, IA 50025 Equipment Sold "AS IS, WHERE IS": All equipment/property is sold "AS IS, WHERE IS" with no warranty or guarantees, expressed or implied, No operational assessments have been made by DPA Auctions on this item, it has been photographed ONLY.



### #412 - 2013 Yamaha (DR7905)

2013 Yamaha (DR7905), TW200 trail motorcycle, shows 2051 miles, Notes: Item Location: Audubon, IA 50025 Equipment Sold "AS IS, WHERE IS": All equipment/property is sold "AS IS, WHERE IS" with no warranty or guarantees, expressed or implied, No operational assessments have been made by DPA Auctions on this item, it has been photographed ONLY.



### #413 - 2009 John Deere 4730 (DR7905)

2009 John Deere 4730 (DR7905), John Deere diesel engine, hydrostatic drive, 800 gallon stainless steel liquid system, 120' aluminum booms, NO foam markers, 5 way nozzle bodies, NO TIPS, NO front weights, cab heat/air conditioning, AM/FM CD radio, NO CONTROLLER, 380/90R46 row crop tires, shows 2485 hours. Notes: This sprayer is in HEATED shop, HAS NOT BEEN WINTERIZED. There is also a CRACK in the right side boom hinge, see pictures. Front weights and front load ARE BEING REMOVED and will not sell with this sprayer. Item Location: Audubon, IA 50025 Equipment Sold "AS IS, WHERE IS": All equipment/property is sold "AS IS, WHERE IS" with no warranty or guarantees, expressed or implied, No operational assessments have been made by DPA Auctions on this item, it has been photographed ONLY.



### #414 - John Deere Model B Drill (DR7884)

John Deere Model B Drill (DR7884), 10' grain drill, 7" spacing's, dual bins, 7.60-15 implement tires. Notes: Item Location: Audubon, IA 50025 Equipment Sold "AS IS, WHERE IS": All equipment/property is sold "AS IS, WHERE IS" with no warranty or guarantees, expressed or implied, No operational assessments have been made by DPA Auctions on this item, it has been photographed ONLY.





---

### #415 - Hutchinson Conveyor (DR7885)

Hutchinson Conveyor (DR7885), portable grain conveyor, S belt tightner, 10" tube, top drive electric motor, motor NEEDS REPLACED, bottom hopper. Notes: Item Location: Audubon, IA 50025 Equipment Sold "AS IS, WHERE IS": All equipment/property is sold "AS IS, WHERE IS" with no warranty or guarantees, expressed or implied, No operational assessments have been made by DPA Auctions on this item, it has been photographed ONLY.



---

### #416 - Westfield Auger (DR7900)

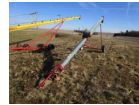
Westfield Auger (DR7900), model 80-71 portable grain auger, set up for electric drive, NO MOTOR. Notes: Item Location: Audubon, IA 50025 Equipment Sold "AS IS, WHERE IS": All equipment/property is sold "AS IS, WHERE IS" with no warranty or guarantees, expressed or implied, No operational assessments have been made by DPA Auctions on this item, it has been photographed ONLY.



---

### #417 - Mayrath Auger (DR7901)

Mayrath Auger (DR7901), 24' X 8" portabel grain auger, electric drive motor 7.5hp. Notes: Item Location: Audubon, IA 50025 Equipment Sold "AS IS, WHERE IS": All equipment/property is sold "AS IS, WHERE IS" with no warranty or guarantees, expressed or implied, No operational assessments have been made by DPA Auctions on this item, it has been photographed ONLY.



---

### #418 - 2010 John Deere 332D (DR7902)

2010 John Deere 332D (DR7902), diesel engine, hydrostatic drive, cab heat/air conditioning, front quick tach, NO BUCKET, AM/FM radio, 14-17.5 tires, shows 1200 hours. Notes: Left side left cylinder does seep oil, glow plugs not working and does not start in cold weather. Item Location: Audubon, IA 50025 Equipment Sold "AS IS, WHERE IS": All equipment/property is sold "AS IS, WHERE IS" with no warranty or guarantees, expressed or implied, No operational assessments have been made by DPA Auctions on this item, it has been photographed ONLY.



---

### #419 - 2010 John Deere 9530 (DR7887)

2010 John Deere 9530 (DR7887), John Deere diesel engine, power shift transmission, cab heat/air conditioning, 4X4, 4 SVC hydraulic outlets, #1 outlet DOES NOT WORK, #3 outlet is weak, buddy seat, standard lighting package, 800/70R38 tires and all duals, inside axle weights, shows 2781 hours. Notes: Inside left front tire has a gouge and DOES NOT HOLD AIR. This tractor is horse power chipped. Outside wheel weights ARE NOT INCLUDED. Item Location: Audubon, IA 50025 Equipment Sold "AS IS, WHERE IS": All equipment/property is sold "AS IS, WHERE IS" with no warranty or guarantees, expressed or implied, No operational assessments have been made by DPA Auctions on this item, it has been photographed ONLY.



---

### #420 - 3000 Gallon (DR7990)

3000 Gallon (DR7990), black poly flat bottom liquid tank. Notes: Item Location: Audubon, IA 50025 Equipment Sold "AS IS, WHERE IS": All equipment/property is sold "AS IS, WHERE IS" with no warranty or guarantees, expressed or implied, No operational assessments have been made by DPA Auctions on this item, it has been photographed ONLY.



---

### #421 - 3000 Gallon (DR7991)

3000 Gallon (DR7991), black poly flat bottom liquid tank. Notes: Item Location: Audubon, IA 50025 Equipment Sold "AS IS, WHERE IS": All equipment/property is sold "AS IS, WHERE IS" with no warranty or guarantees, expressed or implied, No operational assessments have been made by DPA Auctions on this item, it has been photographed ONLY.



---

### #422 - Platform Scale (DR7903)

Platform Scale (DR7903), 4' X 4' steel deck scale, digital read scale head. Notes: Item Location: Audubon, IA 50025 Equipment Sold "AS IS, WHERE IS": All equipment/property is sold "AS IS, WHERE IS" with no warranty or guarantees, expressed or implied, No operational assessments have been made by DPA Auctions on this item, it has been photographed ONLY.



---

### #423 - 2012 Krause Excelerator 8000 (DR7895)

2012 Krause Excelerator 8000 (DR7895), 40' vertical tillage, 22" ripple blades, rear rolling baskets, rear star wheel treads. Notes: Item Location: Audubon, IA 50025 Equipment Sold "AS IS, WHERE IS": All equipment/property is sold "AS IS, WHERE IS" with no warranty or guarantees, expressed or implied, No operational assessments have been made by DPA Auctions on this item, it has been photographed ONLY.



### #424 - 2010 Wilson Hopper (DR7904)

2010 Wilson Hopper (DR7904), 41' aluminum grain hopper, 66" sides, ag hoppers, 24.5 tires, outside aluminum wheels, electric roll tarp, air ride suspension. Notes: There are a couple tears in the tarp. Trailer will need 4 tires to pass DOT. Item Location: Audubon, IA 50025 Equipment Sold "AS IS, WHERE IS": All equipment/property is sold "AS IS, WHERE IS" with no warranty or guarantees, expressed or implied, No operational assessments have been made by DPA Auctions on this item, it has been photographed ONLY.



### #425 - Shopbuilt Fuel Trailer (DR7897)

Shopbuilt Fuel Trailer (DR7897), 750 gallon tandem axle trailer, front compartment, NO PUMP, 11L-15 tires. Notes: This trailer has NO TITLE. Item Location: Audubon, IA 50025 Equipment Sold "AS IS, WHERE IS": All equipment/property is sold "AS IS, WHERE IS" with no warranty or guarantees, expressed or implied, No operational assessments have been made by DPA Auctions on this item, it has been photographed ONLY.



### #426 - 2005 H&H Trailer (DR7892)

2005 H&H Trailer (DR7892), 16' X 7' enclosed trailer, curb side door, rear cargo doors, tandem axle, 205/75R15 tires. Notes: Trailer IS MISSING left side fender, and has FLAT TIRE. Slight damage top left corner see picture. Item Location: Audubon, IA 50025 Equipment Sold "AS IS, WHERE IS": All equipment/property is sold "AS IS, WHERE IS" with no warranty or guarantees, expressed or implied, No operational assessments have been made by DPA Auctions on this item, it has been photographed ONLY.



### #427 - 2000 John Deere 8100 (DR7896)

2000 John Deere 8100 (DR7896), MFWD, John Deere diesel engine, power shift transmission, 4 SVC hydraulic outlets, rear 3 point hitch, rear PTO, cab heat/air conditioning, AM/FM radio, front weight bracket, 380/85R34 front tires, 480/80R46 rear tires & duals, shows 6342 hours. Notes: Loader brackets DO NOT SELL WILL BE TAKEN OFF. This tractor is horse power chipped. Item Location: Audubon, IA 50025 Equipment Sold "AS IS, WHERE IS": All equipment/property is sold "AS IS, WHERE IS" with no warranty or guarantees, expressed or implied, No operational assessments have been made by DPA Auctions on this item, it has been photographed ONLY.



### #428 - 2010 Wilson Livestock (DR7889)

2010 Wilson Livestock (DR7889), 25' X 7' aluminum gooseneck livestock trailer, tandem axle, 2-center swing gates, 2-side access doors, break away brake control. Notes: Item Location: Audubon, IA 50025 Equipment Sold "AS IS, WHERE IS": All equipment/property is sold "AS IS, WHERE IS" with no warranty or guarantees, expressed or implied, No operational assessments have been made by DPA Auctions on this item, it has been photographed ONLY.



### #430 - 1990 Wilson Muv-All (DR7894)

1990 Wilson Muv-All (DR7894), tandem axle hydraulic lowboy, 17' well, hydraulic dove tail, side outriggers, D ring tie downs, cable winch. Notes: Item Location: Audubon, IA 50025 Equipment Sold "AS IS, WHERE IS": All equipment/property is sold "AS IS, WHERE IS" with no warranty or guarantees, expressed or implied, No operational assessments have been made by DPA Auctions on this item, it has been photographed ONLY.



### #431 - 1998 Peterbilt 379 (DR7898)

1998 Peterbilt 379 (DR7898), Cat C12 diesel engine, 13 speed transmission, day cab, tandem axle full screw, air ride suspension, air slide 5th wheel, air dump valve, dual aluminum fuel tanks, dual chrome stacks & air breathers, stainless steel quarter fenders, stainless steel drop visor, AM/FM cassette radio, air conditioning, 22.5 tires, outside aluminum wheels, shows 830,408 miles. Notes: Truck does USE some OIL. Engine does have a water leak. Truck will also NEED a FULL SET of new batteries. Pops out of 7th gear. Item Location: Audubon, IA 50025 Equipment Sold "AS IS, WHERE IS": All equipment/property is sold "AS IS, WHERE IS" with no warranty or guarantees, expressed or implied, No operational assessments have been made by DPA Auctions on this item, it has been photographed ONLY.



### #432 - Schlager Drive Section (NP6003)

Schlager Drive Section (NP6003), Dodge reducer, electric motor. Notes: Item Location: Austinville, IA 50608 Equipment Sold "AS IS, WHERE IS": All equipment/property is sold "AS IS, WHERE IS" with no warranty or guarantees, expressed or implied, No operational assessments have been made by DPA Auctions on this item, it has been photographed ONLY.



---

### **#433 - John Deere 4650 Tractor (NP6162)**

John Deere 4650 Tractor (NP6162), 2WD, JD diesel engine, power shift transmission, cab, heat, Am/Fm radio, rear duals, 3 point, 1000 PTO, 3 remote hydraulics, 18.4R42 rear tires, w/ John Deere 280 loader (S/N W00280X001268), with bale fork and 4x4 bale loader fork attachment (not pictured), tractor shows 4,700 hours, actual hours unverified. Notes: Item Location: Hugoton, KS 67951 Equipment Sold "AS IS, WHERE IS": All equipment/property is sold "AS IS, WHERE IS" with no warranty or guarantees, expressed or implied, No operational assessments have been made by DPA Auctions on this item, it has been photographed ONLY.

