

Auction catalog

Title	Online Auction January 9, 2018 10AM Central
Description	The following line of Fertilizer, Farm Implement, Truck, Trailer & Construction Equipment will be sold online with the bidding ending on January 9, 2018. Location of the equipment is given. Bidding within the last minute before the closing of a lot will extend the bidding time by an additional minute. Be prepared to bid accordingly. For more information, contact Del Peterson & Associates: 419 West Judy Drive Fremont NE, 68025 Phone: 800-492-9090 or 402-721-4388 Fax: 402-721-4583 E-mail: auction@delpeterson.com
Date	Tue, Jan 9, 2018
Starts at	10:00 AM
Address	PO Box 654, Fremont, NE 68026 USA
Categories	

#1 - LP Tank (CP505)

LP Tank (CP505), 1200 gallon LP tank. Notes: This tank may have a leak. Item Location: Rolfe, IA 50581 Equipment Sold "AS IS, WHERE IS": All equipment/property is sold "AS IS, WHERE IS" with no warranty or guarantees, expressed or implied, No operational assessments have been made by DPA Auctions on this item, it has been photographed ONLY.



#2 - Running Gear (PZ8111)

Running Gear (PZ8111), 4 wheel running gear, 5th wheel, 12.5L-15 flotation tires. Notes: Item Location: Janesville, IA 50647 Equipment Sold "AS IS, WHERE IS": All equipment/property is sold "AS IS, WHERE IS" with no warranty or guarantees, expressed or implied, No operational assessments have been made by DPA Auctions on this item, it has been photographed ONLY.



#3 - Running Gear (PZ8112)

Running Gear (PZ8112), 4 wheel running gear, 5th wheel, 11L-15 flotation tires. Notes: Item Location: Janesville, IA 50647 Equipment Sold "AS IS, WHERE IS": All equipment/property is sold "AS IS, WHERE IS" with no warranty or guarantees, expressed or implied, No operational assessments have been made by DPA Auctions on this item, it has been photographed ONLY.



#4 - Running Gear (PZ8113)

Running Gear (PZ8113), 4 wheel running gear, 5th wheel, 11L-15 flotation tires. Notes: Item Location: Janesville, IA 50647 Equipment Sold "AS IS, WHERE IS": All equipment/property is sold "AS IS, WHERE IS" with no warranty or guarantees, expressed or implied, No operational assessments have been made by DPA Auctions on this item, it has been photographed ONLY.



#5 - Running Gear (PZ8130)

Running Gear (PZ8130), 4 wheel running gear, 5th wheel, 14L-16.1 flotation tires. Notes: Item Location: Hampton, IA 50441 Equipment Sold "AS IS, WHERE IS": All equipment/property is sold "AS IS, WHERE IS" with no warranty or guarantees, expressed or implied, No operational assessments have been made by DPA Auctions on this item, it has been photographed ONLY.



#6 - Running Gear (PZ8131)

Running Gear (PZ8131), 4 wheel running gear, 5th wheel, 14L-16.1 flotation tires. Notes: Item Location: Hampton, IA 50441 Equipment Sold "AS IS, WHERE IS": All equipment/property is sold "AS IS, WHERE IS" with no warranty or guarantees, expressed or implied, No operational assessments have been made by DPA Auctions on this item, it has been photographed ONLY.



#7 - Running Gear (PZ8132)

Running Gear (PZ8132), 4 wheel running gear, 5th wheel, 14L-16.1 flotation tires. Notes: Item Location: Hampton, IA 50441 Equipment Sold "AS IS, WHERE IS": All equipment/property is sold "AS IS, WHERE IS" with no warranty or guarantees, expressed or implied, No operational assessments have been made by DPA Auctions on this item, it has been photographed ONLY.



#8 - Running Gear (PZ8133)

Running Gear (PZ8133), 4 wheel running gear, 5th wheel, 14L-16.1 flotation tires. Notes: Item Location: Hampton, IA 50441 Equipment Sold "AS IS, WHERE IS": All equipment/property is sold "AS IS, WHERE IS" with no warranty or guarantees, expressed or implied, No operational assessments have been made by DPA Auctions on this item, it has been photographed ONLY.



#9 - Running Gear (PZ8134)

Running Gear (PZ8134), 4 wheel running gear, 5th wheel, 12.5L-15 flotation tires. Notes: Item Location: Hampton, IA 50441 Equipment Sold "AS IS, WHERE IS": All equipment/property is sold "AS IS, WHERE IS" with no warranty or guarantees, expressed or implied, No operational assessments have been made by DPA Auctions on this item, it has been photographed ONLY.



#10 - Running Gear (PZ8135)

Running Gear (PZ8135), 4 wheel running gear, 5th wheel, 12.5L-15 flotation tires. Notes: Item Location: Hampton, IA 50441 Equipment Sold "AS IS, WHERE IS": All equipment/property is sold "AS IS, WHERE IS" with no warranty or guarantees, expressed or implied, No operational assessments have been made by DPA Auctions on this item, it has been photographed ONLY.



#11 - Running Gear (PZ8136)

Running Gear (PZ8136), 4 wheel running gear, 5th wheel, 12.5L-15 flotation tires. Notes: Item Location: Hampton, IA 50441 Equipment Sold "AS IS, WHERE IS": All equipment/property is sold "AS IS, WHERE IS" with no warranty or guarantees, expressed or implied, No operational assessments have been made by DPA Auctions on this item, it has been photographed ONLY.



#12 - Running Gear (PZ8137)

Running Gear (PZ8137), 4 wheel running gear, 5th wheel, 12.5L-15 flotation tires. Notes: Item Location: Hampton, IA 50441 Equipment Sold "AS IS, WHERE IS": All equipment/property is sold "AS IS, WHERE IS" with no warranty or guarantees, expressed or implied, No operational assessments have been made by DPA Auctions on this item, it has been photographed ONLY.



#13 - Running Gear (PZ8138)

Running Gear (PZ8138), 4 wheel running gear, 5th wheel, flotation tires. Notes: Item Location: Hampton, IA 50441 Equipment Sold "AS IS, WHERE IS": All equipment/property is sold "AS IS, WHERE IS" with no warranty or guarantees, expressed or implied, No operational assessments have been made by DPA Auctions on this item, it has been photographed ONLY.



#14 - Running Gear (PZ8139)

Running Gear (PZ8139), 4 wheel running gear, auto steer. Notes: Item Location: Hampton, IA 50441 Equipment Sold "AS IS, WHERE IS": All equipment/property is sold "AS IS, WHERE IS" with no warranty or guarantees, expressed or implied, No operational assessments have been made by DPA Auctions on this item, it has been photographed ONLY.



#15 - Jost 5th Wheel Plate (PZ8119)

Jost 5th Wheel Plate (PZ8119), Jost 5th wheel plate. Notes: Item Location: New Hampton, IA 50659 Equipment Sold "AS IS, WHERE IS": All equipment/property is sold "AS IS, WHERE IS" with no warranty or guarantees, expressed or implied, No operational assessments have been made by DPA Auctions on this item, it has been photographed ONLY.



#16 - DMI Row Markers (PZ8120)

DMI Row Markers (PZ8120), DMI row markers. Notes: Trailer NOT included. Item Location: New Hampton, IA 50659 Equipment Sold "AS IS, WHERE IS": All equipment/property is sold "AS IS, WHERE IS" with no warranty or guarantees, expressed or implied, No operational assessments have been made by DPA Auctions on this item, it has been photographed ONLY.



#17 - Cross Tread Ladder Rack (PZ8118)

Cross Tread Ladder Rack (PZ8118), Cross Tread ladder rack for pickup. Notes: Item Location: New Hampton, IA 50659 Equipment Sold "AS IS, WHERE IS": All equipment/property is sold "AS IS, WHERE IS" with no warranty or guarantees, expressed or implied, No operational assessments have been made by DPA Auctions on this item, it has been photographed ONLY.



#20 - Chantland Conveyor (DR7880)

Chantland Conveyor (DR7880), model SP3020468 portable conveyor, electric drive motor, bottom hopper. Notes: Item Location: Cozad, NE 69130 Equipment Sold "AS IS, WHERE IS": All equipment/property is sold "AS IS, WHERE IS" with no warranty or guarantees, expressed or implied, No operational assessments have been made by DPA Auctions on this item, it has been photographed ONLY.



#21 - Batco 2065 Conveyor (DR7878)

Batco 2065 Conveyor (DR7878), 20" X 65' portable belt conveyor, hydraulic up/down, bottom hopper, starter box, electric drive motor, 3 phase, hand remote starter. Notes: Item Location: Cozad, NE 69130 Equipment Sold "AS IS, WHERE IS": All equipment/property is sold "AS IS, WHERE IS" with no warranty or guarantees, expressed or implied, No operational assessments have been made by DPA Auctions on this item, it has been photographed ONLY.



#22 - Batco 1814 Under Car (DR7879)

Batco 1814 Under Car (DR7879), portable under car unloader, 7.5hp electric drive motor, 3 phase, bottom hopper. Notes: Conveyor is a little weak when under load, don't know if belt may need tightened. Item Location: Cozad, NE 69130 Equipment Sold "AS IS, WHERE IS": All equipment/property is sold "AS IS, WHERE IS" with no warranty or guarantees, expressed or implied, No operational assessments have been made by DPA Auctions on this item, it has been photographed ONLY.



#23 - 2000 International 4900 (DR7875, Unit 28529)

2000 International 4900 (DR7875, Unit 28529), DT466 diesel engine, 6 speed transmission, air brakes, 18' wood deck flatbed, side stake pockets, 5th wheel ball, side ladder, frame mount storage box, rear hitch, AM/FM cassette radio, air conditioning, cruise control, 22.5 tires, shows 229,245 miles. Notes: PLEASE ALLOW AT LEAST 60 DAYS FOR TITLE TRANSFER. Item Location: Cozad, NE 69130 Equipment Sold "AS IS, WHERE IS": All equipment/property is sold "AS IS, WHERE IS" with no warranty or guarantees, expressed or implied, No operational assessments have been made by DPA Auctions on this item, it has been photographed ONLY.



#24 - (4) BKT Flotation Tires/Rims (NP6161)

(4) BKT Flotation Tires/Rims (NP6161), BKT-AgriMax RT657 LIKE NEW, size 650/65R38, 163D/166A8, 12 bolt rim pattern, 90-95% tread, came off John Deere 4830 sprayer, can also be used on multiple other machines. Notes: Item Location: Fort Dodge, IA 50501 Equipment Sold "AS IS, WHERE IS": All equipment/property is sold "AS IS, WHERE IS" with no warranty or guarantees, expressed or implied, No operational assessments have been made by DPA Auctions on this item, it has been photographed ONLY.



#25 - Raven Sidekick Pro - ISO (NP6081)

Raven Sidekick Pro - ISO (NP6081), pump size - 5-200oz/per minute, BRAND NEW in the box and can be used for Direct Injection on Herbicide/Pesticide/Fungicide/Nitrogen Stabilizer, etc. Notes: Item Location: Fort Dodge, IA 50501 Equipment Sold "AS IS, WHERE IS": All equipment/property is sold "AS IS, WHERE IS" with no warranty or guarantees, expressed or implied, No operational assessments have been made by DPA Auctions on this item, it has been photographed ONLY.



#26 - 2014 John Deere 4630 (DR7917, Unit 8518)

2014 John Deere 4630 (DR7917, Unit 8518), John Deere diesel engine, hydrostatic drive, 600 gallon poly liquid system, 60/80' boom, Green Star controller, 3 way nozzle bodies, stainless steel chemical inductor, 380/80R46 row crop tires, shows 2361 hours. Notes: Item Location: Glasgow, KY 42141 Equipment Sold "AS IS, WHERE IS": All equipment/property is sold "AS IS, WHERE IS" with no warranty or guarantees, expressed or implied, No operational assessments have been made by DPA Auctions on this item, it has been photographed ONLY.



#27 - 2013 John Deere 4940 (DR7916, Unit 5385)

2013 John Deere 4940 (DR7916, Unit 5385), John Deere diesel engine, hydrostatic drive, New Leader 3020G4 stainless steel dry spinner box, Multiplier insert box, roll over tarp, 380/105R/50 row crop tires, shows 2621 hours. Notes: Item Location: Glasgow, KY 42141 Equipment Sold "AS IS, WHERE IS": All equipment/property is sold "AS IS, WHERE IS" with no warranty or guarantees, expressed or implied, No operational assessments have been made by DPA Auctions on this item, it has been photographed ONLY.



#29 - 2000 Adams Buggy (RMC219, Unit 2514)

2000 Adams Buggy (RMC219, Unit 2514), 5 ton stainless steel dry spreader, ground drive hydraulics, tandem axle, dual rear spinners. Notes: One tire is FLAT. Item Location: Tchula, MS 39169 Equipment Sold "AS IS, WHERE IS": All equipment/property is sold "AS IS, WHERE IS" with no warranty or guarantees, expressed or implied, No operational assessments have been made by DPA Auctions on this item, it has been photographed ONLY.



#30 - (4) Firestone Flotation Tires/Rims (NP6160)

(4) Firestone Flotation Tires/Rims (NP6160), size 20.8R38 or 520/85R38, 155B/155AB, 10 bolt rim pattern, 65-70% tread, can be used on a John Deere 4710/20/30 or R4030 sprayer, can also be used on multiple other machines. Notes: Item Location: Fort Dodge, IA 50501 Equipment Sold "AS IS, WHERE IS": All equipment/property is sold "AS IS, WHERE IS" with no warranty or guarantees, expressed or implied, No operational assessments have been made by DPA Auctions on this item, it has been photographed ONLY.



#30A - 2005 Chevrolet Cavalier (TR4330)

2005 Chevrolet Cavalier (TR4330), 2.2 L gas engine, automatic transmission, 4 door, AM/FM CD radio, heat, AC, power windows, power lock, cruise control, 126,796 miles. Notes: Check engine light is on. Item Location: Fremont, NE 68025 Equipment Sold "AS IS, WHERE IS": All equipment/property is sold "AS IS, WHERE IS" with no warranty or guarantees, expressed or implied, No operational assessments have been made by DPA Auctions on this item, it has been photographed ONLY.



#31 - 2012 RoGator 1100 Sprayer (PZ8004, Unit 29621)

2012 RoGator 1100 Sprayer (PZ8004, Unit 29621), SISU diesel engine, hydrostatic transmission, air conditioning, heat, Am/Fm CD stereo, 1100 gallon stainless steel liquid system, 100' boom, foam marker, poly top rinse tank, poly chemical eductor, Good Year Ultra Sprayer 380/90R46 tires, (flotation tires will NOT be sold with this machine, they will be sold separately), Raven monitor, shows 3724 hours. Notes: Flotation tires will NOT be sold with this machine, they will be sold separately. Item Location: Dyersville, IA 52040 Equipment Sold "AS IS, WHERE IS": All equipment/property is sold "AS IS, WHERE IS" with no warranty or guarantees, expressed or implied, No operational assessments have been made by DPA Auctions on this item, it has been photographed ONLY.



#37 - 1998 Gaylean Killabrew (DR7914, Unit 6921)

1998 Gaylean Killabrew (DR7914, Unit 6921), 4 hopper hydraulic tipper tender trailer, se:f contained hydraulics, Honda gas engine, tandem axle, 11R22.5 tires. Notes: Item Location: Lyons, GA 30436 Equipment Sold "AS IS, WHERE IS": All equipment/property is sold "AS IS, WHERE IS" with no warranty or guarantees, expressed or implied, No operational assessments have been made by DPA Auctions on this item, it has been photographed ONLY.



#38 - New Leader Dry Spreader Box (PZ8005)

New Leader Dry Spreader Box (PZ8005), New Leader L4258 MultiApplier G4 dry spreader box, twin spinner, all hydraulic. Notes: Running gear not included. Spreader box came off 2012 RoGator 1100 sprayer. Item Location: Dyersville, IA 52040 Equipment Sold "AS IS, WHERE IS": All equipment/property is sold "AS IS, WHERE IS" with no warranty or guarantees, expressed or implied, No operational assessments have been made by DPA Auctions on this item, it has been photographed ONLY.



#39 - Flotation Tires (PZ8100)

Flotation Tires (PZ8100), 4 - Mitas AC65 710/70R38 flotation tires & rims. Notes: Item Location: Dyersville, IA 52040 Equipment Sold "AS IS, WHERE IS": All equipment/property is sold "AS IS, WHERE IS" with no warranty or guarantees, expressed or implied, No operational assessments have been made by DPA Auctions on this item, it has been photographed ONLY.



#40 - 1990 GMC 7000 (Unit 13395)

1990 GMC 7000 (Unit 13395), Top Kick, Cat diesel engine, 6 speed transmission, single axle, 20' dry van box, fiberglass front light panel, rear roll up ODES NOT go all the way, rear lift gate, AM/FM radio, shows 143,683 miles,. Notes: Rear roll up door DOES NOT GO all the way up. Probably needs a spring repalced or adjusted. Item Location: Fairgrove, MI 48733 Equipment Sold "AS IS, WHERE IS": All equipment/property is sold "AS IS, WHERE IS" with no warranty or guarantees, expressed or implied, No operational assessments have been made by DPA Auctions on this item, it has been photographed ONLY.



#40A - 2004 GMC Yukon Denali (TR4331)

2004 GMC Yukon Denali (TR4331), gas engine, automatic transmission, AM/FM CD radio, heat, AC, power windows, power lock, cruise control, leather interior, headrest DVD players, 3rd row seating, power/heated seats, sunroof, 176,712 miles. Notes: Item Location: Fremont, NE 68025 Equipment Sold "AS IS, WHERE IS": All equipment/property is sold "AS IS, WHERE IS" with no warranty or guarantees, expressed or implied, No operational assessments have been made by DPA Auctions on this item, it has been photographed ONLY.



#41 - 1997 International 4900 (DR7918, Unit 7876)

1997 International 4900 (DR7918, Unit 7876), diesel engine, 10 speed transmission, tandem axle full screw, air brakes, Doyle 16 ton stainless steel hydraulic dry fertilizer tender box, rear auger, roll over tarp, AM/FM radio, air conditioning, 22.5 tires, shows 290,789 miles. Notes: This truck WILL NEED batteries. Item Location: Knippa, TX 78870 Equipment Sold "AS IS, WHERE IS": All equipment/property is sold "AS IS, WHERE IS" with no warranty or guarantees, expressed or implied, No operational assessments have been made by DPA Auctions on this item, it has been photographed ONLY.



#42 - 1990 John Deere 9500 Combine (NP6144)

1990 John Deere 9500 Combine (NP6144), 2wd, John Deere diesel engine, hydrostat transmission, heat, NEW air conditioning unit, Am/Fm radio, stock chopper, drive tires on 27" rim, 14.9-24 rear tires, shows 4,617 engine hours, shows 3,388 separator hours. Notes: Item Location: Forest City, MO 64451 Equipment Sold "AS IS, WHERE IS": All equipment/property is sold "AS IS, WHERE IS" with no warranty or guarantees, expressed or implied, No operational assessments have been made by DPA Auctions on this item, it has been photographed ONLY.



#43 - Sunflower 1232 Disc (NP6143)

Sunflower 1232 Disc (NP6143), Model 1232-21, 3 section, hydraulic fold, approx. 22" discs, 9.5L-15 tires. Notes: Item Location: Forest City, MO 64451 Equipment Sold "AS IS, WHERE IS": All equipment/property is sold "AS IS, WHERE IS" with no warranty or guarantees, expressed or implied, No operational assessments have been made by DPA Auctions on this item, it has been photographed ONLY.



#44 - 1977 Terragator Lime Spreader (TH208)

1977 Terragator Lime Spreader (TH208), 3208 CAT engine, low hours, Jet row monitor, s cam air brakes, New Leader L2020 box, shows 45673 miles, shows 2931 hours. Notes: Item Location: Melbourne, IA 50162 Equipment Sold "AS IS, WHERE IS": All equipment/property is sold "AS IS, WHERE IS" with no warranty or guarantees, expressed or implied, No operational assessments have been made by DPA Auctions on this item, it has been photographed ONLY.



#45 - Dry Storage Bin (PZ8046)

Dry Storage Bin (PZ8046), 25 ton stainless steel dry bin, vibrator, lift hooks, small dent on top but doesn't effect tank. Notes: Item Location: Stockton, IL 61085 Equipment Sold "AS IS, WHERE IS": All equipment/property is sold "AS IS, WHERE IS" with no warranty or guarantees, expressed or implied, No operational assessments have been made by DPA Auctions on this item, it has been photographed ONLY.



#46 - Dry Storage Bin (PZ8047)

Dry Storage Bin (PZ8047), 25 ton stainless steel dry bin, vibrator. Notes: Item Location: Stockton, IL 61085 Equipment Sold "AS IS, WHERE IS": All equipment/property is sold "AS IS, WHERE IS" with no warranty or guarantees, expressed or implied, No operational assessments have been made by DPA Auctions on this item, it has been photographed ONLY.



#47 - Kraus Dry Blender (PZ8048)

Kraus Dry Blender (PZ8048), Kraus 10 ton stainless steel vertical blender, stainless steel loadout conveyor, has load cell plates that go on blender, NO load bar platform or load cells, No motor. Notes: Top of blender in rough shape. Item Location: Stockton, IL 61085 Equipment Sold "AS IS, WHERE IS": All equipment/property is sold "AS IS, WHERE IS" with no warranty or guarantees, expressed or implied, No operational assessments have been made by DPA Auctions on this item, it has been photographed ONLY.



#48 - 2011 John Deere 9530 4WD Tractor (PZ7650, Unit 868)

2011 John Deere 9530 4WD Tractor (PZ7650, Unit 868), John Deere diesel engine (S/N RG6135L025427), Powershift transmission, air conditioning, heat, Am/Fm radio, buddy seat, 4 port hydraulics, 20 rear suitcase weights, Firestone Radial All Traction DT 710/70R42 dual tires, John Deere Greenstar 3 monitor, StarFire 3000 globe, shows 1859 hours. Notes: Item Location: Winterset, IA 50273 Equipment Sold "AS IS, WHERE IS": All equipment/property is sold "AS IS, WHERE IS" with no warranty or guarantees, expressed or implied, No operational assessments have been made by DPA Auctions on this item, it has been photographed ONLY.



#49 - 1982 Progress Liquid Transport Trailer (PZ6950)

1982 Progress Liquid Transport Trailer (PZ6950), 1982 Progress model SST-DC 6000 gallon conical stainless steel liquid transport trailer, tandem axle, spring suspension, Honda 11 hp electric start motor, pump, ladder, fenders, 11R22.5 tires, Unit# T335. Notes: Item Location: Randall, IA 50231 Equipment Sold "AS IS, WHERE IS": All equipment/property is sold "AS IS, WHERE IS" with no warranty or guarantees, expressed or implied, No operational assessments have been made by DPA Auctions on this item, it has been photographed ONLY.



#50 - Friesen T1055 Conveyor (DR7912)

Friesen T1055 Conveyor (DR7912), 12" cleated belt, 10" tube, NEW belt 2015, has been used for about 12,000 bu on NEW belt, 10hp 3 phase electric drive motor, used filling seed tanks. Notes: Item Location: Murray, KY 42071 Equipment Sold "AS IS, WHERE IS": All equipment/property is sold "AS IS, WHERE IS" with no warranty or guarantees, expressed or implied, No operational assessments have been made by DPA Auctions on this item, it has been photographed ONLY.



#50A - 2008 GMC Acadia SLT (TR4332)

2008 GMC Acadia SLT (TR4332), 3.6 L V6 gas engine, AWD automatic transmission, AM/FM CD radio, heat, AC, power windows, power lock, cruise control, bucket seats in rear, 3rd row seating, DVD player, dual sunroof, leather interior, rear climate control, GPS, 118,378 miles. Notes: Recently added new transmission. Item Location: Fremont, NE 68025 Equipment Sold "AS IS, WHERE IS": All equipment/property is sold "AS IS, WHERE IS" with no warranty or guarantees, expressed or implied, No operational assessments have been made by DPA Auctions on this item, it has been photographed ONLY.



#51 - Friesen Seed Max Tank (DR7908, Unit 1)

Friesen Seed Max Tank (DR7908, Unit 1), 1942 bushel hopper tank, 26' tall, 13.5' diameter, safety access ladder, 3/4hp 3 phase electric fan. Notes: Has only been used 2 times in last 3 years. Bin all operates as it should. Dismantle, removal, & transportation are the responsibility of the buyer. Jim does have a quote from local millwright for tear down, call him for that information. Item Location: Murray, KY 42071 Equipment Sold "AS IS, WHERE IS": All equipment/property is sold "AS IS, WHERE IS" with no warranty or guarantees, expressed or implied, No operational assessments have been made by DPA Auctions on this item, it has been photographed ONLY.



#52 - 1997 John Deere 920F Platform Head (NP6145)

1997 John Deere 920F Platform Head (NP6145), all new cycle sections, rotomatic header control, cylinder reverser unit, poly skid plates. Notes: Item Location: Forest City, MO 64451 Equipment Sold "AS IS, WHERE IS": All equipment/property is sold "AS IS, WHERE IS" with no warranty or guarantees, expressed or implied, No operational assessments have been made by DPA Auctions on this item, it has been photographed ONLY.



#53 - 1995 Demco Seed Tender (NP6149)

1995 Demco Seed Tender (NP6149), Model GF250, 4 wheel gear, Unverferth side tube conveyor (S/N A54600185), 12.5-15 tires, manual roll tarp, Briggs & Stratton 305cc gas motor, side counter weights. Notes: Item Location: Forest City, MO 64451 Equipment Sold "AS IS, WHERE IS": All equipment/property is sold "AS IS, WHERE IS" with no warranty or guarantees, expressed or implied, No operational assessments have been made by DPA Auctions on this item, it has been photographed ONLY.



#54 - Friesen Seed Max Tank (DR7909, Unit 2)

Friesen Seed Max Tank (DR7909, Unit 2), 1942 bushel hopper tank, 26' tall, 13.5' diameter, safety access ladder, 3/4hp 3 phase electric fan. Notes: Has only been used 2 times in last 3 years. Bin all operates as it should. Dismantle, removal, & transportation are the responsibility of the buyer. Jim does have a quote from local millwright for tear down, call him for that information. Item Location: Murray, KY 42071 Equipment Sold "AS IS, WHERE IS": All equipment/property is sold "AS IS, WHERE IS" with no warranty or guarantees, expressed or implied, No operational assessments have been made by DPA Auctions on this item, it has been photographed ONLY.



#55 - Friesen Seed Max Tank (DR7910, Unit 3)

Friesen Seed Max Tank (DR7910, Unit 3), 1942 bushel hopper tank, 26' tall, 13.5' diameter, safety access ladder, 3/4hp 3 phase electric fan. Notes: Has only been used 2 times in last 3 years. Bin all operates as it should. Dismantle, removal, & transportation are the responsibility of the buyer. Jim does have a quote from local millwright for tear down, call him for that information. Item Location: Murray, KY 42071 Equipment Sold "AS IS, WHERE IS": All equipment/property is sold "AS IS, WHERE IS" with no warranty or guarantees, expressed or implied, No operational assessments have been made by DPA Auctions on this item, it has been photographed ONLY.



#56 - Friesen Under Bin (DR7913)

Friesen Under Bin (DR7913), 60' under bin conveyor, 7.5hp 3 phase electric motor, 4 drop in openings. Notes: Conveyor all functions as it should. Services 4 Friesen tanks. Dismantle, removal, & transportation are the responsibility of the buyer. Jim does have a quote from local millright for tear down, call him for that information. Item Location: Murray, KY 42071 Equipment Sold "AS IS, WHERE IS": All equipment/property is sold "AS IS, WHERE IS" with no warranty or guarantees, expressed or implied, No operational assessments have been made by DPA Auctions on this item, it has been photographed ONLY.



#57 - Friesen Seed Max Tank (DR7911, Unit 4)

Friesen Seed Max Tank (DR7911, Unit 4), 1942 bushel hopper tank, 26' tall, 13.5' diameter, safety access ladder, 3/4hp 3 phase electric fan. Notes: Has only been used 2 times in last 3 years. Bin all operates as it should. Dismantle, removal, & transportation are the responsibility of the buyer. Jim does have a quote from local millright for tear down, call him for that information. Item Location: Murray, KY 42071 Equipment Sold "AS IS, WHERE IS": All equipment/property is sold "AS IS, WHERE IS" with no warranty or guarantees, expressed or implied, No operational assessments have been made by DPA Auctions on this item, it has been photographed ONLY.



#58 - 1999 Great Dane (RMC220, Unit 10288)

1999 Great Dane (RMC220, Unit 10288), 48' dry van trailer, 295/75R22.5 tires, outside aluminum wheels, rear cargo doors, light panel roof. Notes: Item Location: Tunica, MS 38676 Equipment Sold "AS IS, WHERE IS": All equipment/property is sold "AS IS, WHERE IS" with no warranty or guarantees, expressed or implied, No operational assessments have been made by DPA Auctions on this item, it has been photographed ONLY.



#59 - 2004 KBH Dry Tender Trailer (RMC221, Unit 10176)

2004 KBH Dry Tender Trailer (RMC221, Unit 10176), 24 ton hydraulic stainless steel tender trailer, hydraulic rear auger, roll over tarp, 255/70R22.5 tires. Notes: Item Location: Forrest City, AR 72335 Equipment Sold "AS IS, WHERE IS": All equipment/property is sold "AS IS, WHERE IS" with no warranty or guarantees, expressed or implied, No operational assessments have been made by DPA Auctions on this item, it has been photographed ONLY.



#60 - Sunflower 5231 Field Cultivator (NP6148)

Sunflower 5231 Field Cultivator (NP6148), Model 5231-23, 3 section, hydraulic fold, rear harrow, walking tandems, 9.5L-15 tires. Notes: Item Location: Forest City, MO 64451 Equipment Sold "AS IS, WHERE IS": All equipment/property is sold "AS IS, WHERE IS" with no warranty or guarantees, expressed or implied, No operational assessments have been made by DPA Auctions on this item, it has been photographed ONLY.



#60A - 2009 Chevrolet Traverse LT (TR4333)

2009 Chevrolet Traverse LT (TR4333), 3.6L gas engine, automatic transmission, AM/FM CD radio, heat, AC, power windows, power lock, cruise control, 3rd row seating, rear climate control, Approx. 118,000 miles. Notes: Vehicle has been through and inspected by dealership, Dash lights will not work. See pictures. Item Location: Fremont, NE 68025 Equipment Sold "AS IS, WHERE IS": All equipment/property is sold "AS IS, WHERE IS" with no warranty or guarantees, expressed or implied, No operational assessments have been made by DPA Auctions on this item, it has been photographed ONLY.



#63 - 2011 John Deere 4930 Combo Sprayer (PZ8146)

2011 John Deere 4930 Combo Sprayer (PZ8146), John Deere diesel engine, hydrostatic transmission, air conditioning, heat, Am/Fm radio, New Leader L3030 - 11' MultApplier 304 stainless steel dry spreader box, 5' MultApplier (New conveyors, shafts and bearings 10/17, New seal in gearbox), S/N 127892, with 1200 gallon stainless steel liquid system, 120' boom, 5 way nozzles on 20" spacing, front fill, stainless steel chemical eductor, lifting device for combo, Michelin VF 480/80R50 row crop tires, Trelleborg 710/70R42 flotation tires, StarFire 300 GPS, John Deere monitor, shows 3946 hours. Notes: Item Location: Monticello, IN 47960 Equipment Sold "AS IS, WHERE IS": All equipment/property is sold "AS IS, WHERE IS" with no warranty or guarantees, expressed or implied, No operational assessments have been made by DPA Auctions on this item, it has been photographed ONLY.



#64 - 1998 Terra Gator 8103 Dry Floater (PZ8147)

1998 Terra Gator 8103 Dry Floater (PZ8147), John Deere 8.1L diesel engine, Terra Shift transmission, air conditioning, heat, Am/Fm radio, Chandler 304 stainless steel dry spreader box, twin spinner, all hydraulic, manual roll tarp, PrimeX 66x43.00-25 tires, Raven SCS 660 monitor, Raven Viper Pro controller, RGL600 lightbar, Phoenix 200 receiver, shows 6712 hours, 61,609 miles. Notes: Item Location: Monticello, IN 47960 Equipment Sold "AS IS, WHERE IS": All equipment/property is sold "AS IS, WHERE IS" with no warranty or guarantees, expressed or implied, No operational assessments have been made by DPA Auctions on this item, it has been photographed ONLY.



#65 - 1999 Terra Gator 8104 Dry Floater (PZ8100, Unit T361)

1999 Terra Gator 8104 Dry Floater (PZ8100, Unit T361), John Deere diesel engine, Terra Shift transmission (transmission is bad), air conditioning, heat, Am/Fm CD stereo, Ag Force model FL3024-13 stainless steel dry spreader box (S/N 12005), twin spinner, all hydraulic, Good Year 48x31.00R20 front tires, Firestone 66x43.00-25 rear tires. Notes: This floater has a bad transmission. Item Location: De Witt, IA 52742 Equipment Sold "AS IS, WHERE IS": All equipment/property is sold "AS IS, WHERE IS" with no warranty or guarantees, expressed or implied, No operational assessments have been made by DPA Auctions on this item, it has been photographed ONLY.



#66 - John Deere Tool Bar (CP500)

John Deere Tool Bar (CP500), John Deere 2510H 23 knife pull type tool bar, dual Raven Super coolers, hydraulic wings, weights, flotation tires, rear hitch. Notes: Item Location: Moravia, IA 52571 Equipment Sold "AS IS, WHERE IS": All equipment/property is sold "AS IS, WHERE IS" with no warranty or guarantees, expressed or implied, No operational assessments have been made by DPA Auctions on this item, it has been photographed ONLY.



#67 - 2005 CaseIH Tool Bar (PZ8150)

2005 CaseIH Tool Bar (PZ8150), 2005 CaseIH NTX5300 16 knife pull type tool bar, 24" coulters, 18" double disc sealers, 1x2 shanks, markers, hydraulic wings, Hiniker cooler, walking tandems, 12.5L-15 flotation tires, rear hitch. Notes: Item Location: Tremont, IL 61568 Equipment Sold "AS IS, WHERE IS": All equipment/property is sold "AS IS, WHERE IS" with no warranty or guarantees, expressed or implied, No operational assessments have been made by DPA Auctions on this item, it has been photographed ONLY.



#68 - 2008 CaseIH Tool Bar (PZ8151)

2008 CaseIH Tool Bar (PZ8151), CaseIH 5300 21 knife pull type tool bar, 24" coulters, 18" double disc sealers, 1x2 shanks, hydraulic wings, dual Raven Super coolers, walking tandems, 12.5L-15 flotation tires, rear hitch. Notes: Item Location: Lincoln, IL 62656 Equipment Sold "AS IS, WHERE IS": All equipment/property is sold "AS IS, WHERE IS" with no warranty or guarantees, expressed or implied, No operational assessments have been made by DPA Auctions on this item, it has been photographed ONLY.



#69 - 1997 John Deere 8300 MFWD Tractor (NP6141)

1997 John Deere 8300 MFWD Tractor (NP6141), John Deere 6 cylinder diesel engine, John Deere powershift transmission, cab, heat, air conditioning, rear duals, 18.4R46 rear tires, 14.9R34 front tires, 4 port hydraulics, PTO, 3 point, GreenStar ready, shows 8,457 hours. Notes: Item Location: Forest City, MO 64451 Equipment Sold "AS IS, WHERE IS": All equipment/property is sold "AS IS, WHERE IS" with no warranty or guarantees, expressed or implied, No operational assessments have been made by DPA Auctions on this item, it has been photographed ONLY.



#70 - 1989 John Deere 8560 4WD Tractor (NP6142)

1989 John Deere 8560 4WD Tractor (NP6142), John Deere re-man 6 cylinder diesel engine, John Deere syncro transmission, heat, air conditioning, Am/Fm radio, front/rear duals, 480/80R38 tires, 3 port hydraulics, shows 4,494 hours. Notes: 800 hours on reman diesel engine, Tractor could use a cab kit as interior in beginning to wear. Item Location: Forest City, MO 64451 Equipment Sold "AS IS, WHERE IS": All equipment/property is sold "AS IS, WHERE IS" with no warranty or guarantees, expressed or implied, No operational assessments have been made by DPA Auctions on this item, it has been photographed ONLY.



#70A - 2008 Cadillac Escalade (TR4334)

2008 Cadillac Escalade (TR4334), 6.2 L gas engine, automatic transmission, AM/FM CD radio, heat, AC, power windows, power lock, cruise control, leather heated/cooling/power seats in front and rear, DVD player, rear climate control, 3rd row seating, GPS, 137,128 miles. Notes: Vehicle has been through and inspected by dealership. Item Location: Fremont, NE 68025 Equipment Sold "AS IS, WHERE IS": All equipment/property is sold "AS IS, WHERE IS" with no warranty or guarantees, expressed or implied, No operational assessments have been made by DPA Auctions on this item, it has been photographed ONLY.



#71 - 1992 IHC 4900 Truck (PZ8148)

1992 IHC 4900 Truck (PZ8148), DT466 diesel engine, Spicer Double Duty D transmission, 2 speed axle, heat, Am/Fm radio, single axle, 295/75R22.5 tires, shows 444,441 miles. Notes: Item Location: Lincoln, IL 62656 Equipment Sold "AS IS, WHERE IS": All equipment/property is sold "AS IS, WHERE IS" with no warranty or guarantees, expressed or implied, No operational assessments have been made by DPA Auctions on this item, it has been photographed ONLY.



#72 - Killbros Gravity Wagon (PZ8103)

Killbros Gravity Wagon (PZ8103), Killbros 350 bushel gravity wagon, auto steer gear, 11L-15 flotation tires. Notes: Item Location: Dewar, IA 50623 Equipment Sold "AS IS, WHERE IS": All equipment/property is sold "AS IS, WHERE IS" with no warranty or guarantees, expressed or implied, No operational assessments have been made by DPA Auctions on this item, it has been photographed ONLY.



#73 - Killbros Gravity Wagon (PZ8104)

Killbros Gravity Wagon (PZ8104), Killbros 350 bushel gravity wagon, auto steer gear, 11L-15 flotation tires. Notes: Item Location: Dewar, IA 50623 Equipment Sold "AS IS, WHERE IS": All equipment/property is sold "AS IS, WHERE IS" with no warranty or guarantees, expressed or implied, No operational assessments have been made by DPA Auctions on this item, it has been photographed ONLY.



#74 - Running Gear (PZ8105)

Running Gear (PZ8105), 4 wheel running gear, auto steer, 11L-15SL flotation tires. Notes: Item Location: Dewar, IA 50623 Equipment Sold "AS IS, WHERE IS": All equipment/property is sold "AS IS, WHERE IS" with no warranty or guarantees, expressed or implied, No operational assessments have been made by DPA Auctions on this item, it has been photographed ONLY.



#75 - Running Gear (PZ8106)

Running Gear (PZ8106), 4 wheel running gear, 5th wheel, 14L-16.1 flotation tires. Notes: This running gear has a flat tire. Item Location: Dewar, IA 50623 Equipment Sold "AS IS, WHERE IS": All equipment/property is sold "AS IS, WHERE IS" with no warranty or guarantees, expressed or implied, No operational assessments have been made by DPA Auctions on this item, it has been photographed ONLY.



#76 - Running Gear (PZ8107)

Running Gear (PZ8107), 4 wheel running gear, 5th wheel, 11L-15 flotation tires. Notes: Item Location: Dewar, IA 50623 Equipment Sold "AS IS, WHERE IS": All equipment/property is sold "AS IS, WHERE IS" with no warranty or guarantees, expressed or implied, No operational assessments have been made by DPA Auctions on this item, it has been photographed ONLY.



#77 - Running Gear (PZ8108)

Running Gear (PZ8108), 4 wheel running gear, 5th wheel, 12.5L-15 flotation tires. Notes: Item Location: Dewar, IA 50623 Equipment Sold "AS IS, WHERE IS": All equipment/property is sold "AS IS, WHERE IS" with no warranty or guarantees, expressed or implied, No operational assessments have been made by DPA Auctions on this item, it has been photographed ONLY.



#78 - Running Gear (PZ8109)

Running Gear (PZ8109), 4 wheel running gear, 5th wheel, 11L-15 flotation tires. Notes: Item Location: Dewar, IA 50623 Equipment Sold "AS IS, WHERE IS": All equipment/property is sold "AS IS, WHERE IS" with no warranty or guarantees, expressed or implied, No operational assessments have been made by DPA Auctions on this item, it has been photographed ONLY.



#79 - 2011 Merritt Grain Trailer (PZ8102, Unit 746)

2011 Merritt Grain Trailer (PZ8102, Unit 746), 2011 Merritt model 386X096X068X2F-X2SXMVT grain trailer, tandem axle, Agri-Cover electric roll over tarp, 11R24.5 tires. Notes: Item Location: Dewar, IA 50623 Equipment Sold "AS IS, WHERE IS": All equipment/property is sold "AS IS, WHERE IS" with no warranty or guarantees, expressed or implied, No operational assessments have been made by DPA Auctions on this item, it has been photographed ONLY.



#80 - Hutchinson Grain Auger (PZ8123, Unit 426)

Hutchinson Grain Auger (PZ8123, Unit 426), Hutchinson grain auger, swing hopper, PTO, portable, P205/75R15 tires. Notes: Item Location: Sheffield, IA 50475 Equipment Sold "AS IS, WHERE IS": All equipment/property is sold "AS IS, WHERE IS" with no warranty or guarantees, expressed or implied, No operational assessments have been made by DPA Auctions on this item, it has been photographed ONLY.



#80A - 2010 Chevrolet Equinox LT (TR4335)

2010 Chevrolet Equinox LT (TR4335), gas engine, automatic transmission, AM/FM CD radio, heat, AC, power windows, power lock, cruise control, leather interior, power seats, heated seats, 122,366 miles. Notes: Vehicle has been through and inspected by dealership. Item Location: Fremont, NE 68025 Equipment Sold "AS IS, WHERE IS": All equipment/property is sold "AS IS, WHERE IS" with no warranty or guarantees, expressed or implied, No operational assessments have been made by DPA Auctions on this item, it has been photographed ONLY.



#81 - Hutchinson Grain Auger (PZ8124)

Hutchinson Grain Auger (PZ8124), Hutchinson grain auger, PTO, portable. Notes: Item Location: Sheffield, IA 50475 Equipment Sold "AS IS, WHERE IS": All equipment/property is sold "AS IS, WHERE IS" with no warranty or guarantees, expressed or implied, No operational assessments have been made by DPA Auctions on this item, it has been photographed ONLY.



#82 - Feterl Grain Auger (PZ8122, Unit 850)

Feterl Grain Auger (PZ8122, Unit 850), Feterl 14" x 116' grain auger, swing hopper, hopper assist wheels, PTO, portable, 11L-15 flotation tires. Notes: Auger is bad. Please contact seller for more information. Item Location: Sheffield, IA 50475 Equipment Sold "AS IS, WHERE IS": All equipment/property is sold "AS IS, WHERE IS" with no warranty or guarantees, expressed or implied, No operational assessments have been made by DPA Auctions on this item, it has been photographed ONLY.



#83 - 2000 Brandt Grain Vac (PZ8155)

2000 Brandt Grain Vac (PZ8155), 2000 Brandt 4500EX grain vac, PTO, flex pipe, portable. Notes: Item Location: Canton, IL 61520 Equipment Sold "AS IS, WHERE IS": All equipment/property is sold "AS IS, WHERE IS" with no warranty or guarantees, expressed or implied, No operational assessments have been made by DPA Auctions on this item, it has been photographed ONLY.



#84 - 2009 Chevrolet 1500 Extended Cab Pickup (PZ8116, Unit 379)

2009 Chevrolet 1500 Extended Cab Pickup (PZ8116, Unit 379), 4x4, gas engine, automatic transmission, air conditioning, heat, Am/Fm radio, cruise control, power windows & locks, LT265/70R17 tires, shows 203,295 miles. Notes: Tool box in pickup NOT included. Weak Battery. Item Location: New Hampton, IA 50659 Equipment Sold "AS IS, WHERE IS": All equipment/property is sold "AS IS, WHERE IS" with no warranty or guarantees, expressed or implied, No operational assessments have been made by DPA Auctions on this item, it has been photographed ONLY.



#85 - Westendorf Loader (PZ8117)

Westendorf Loader (PZ8117), Westendorf loader, 8' bucket. Notes: Item Location: New Hampton, IA 50659 Equipment Sold "AS IS, WHERE IS": All equipment/property is sold "AS IS, WHERE IS" with no warranty or guarantees, expressed or implied, No operational assessments have been made by DPA Auctions on this item, it has been photographed ONLY.



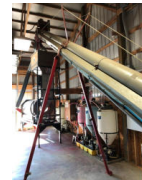
#86 - 2010 Gustafson RH2000 Seed Treater (PZ8152)

2010 Gustafson RH2000 Seed Treater (PZ8152), 2010 Gustafson RH2000 seed treater with 1 pump stand, Treater includes: treater stand and legs, drum drive motor, AC Tech control panel, rotary volumetric seed wheel, 6 port manifold, soft start & variable speed drum with reverse, atomizer & motor, seed wheel & motor, seed hopper above treater (approx. 20 bu), high & low level sensors on hopper, side discharge chute, side inlet for bypass, stainless steel curtain around atomizer for easy clean-out, quick disconnect seed chute for easy clean out, 1 - 60 gallon poly surry tank, hi-rate IP pump, flow meter. Notes: Pump/seed wheel control panel not included. Always stored indoors and well maintained, excellent condition. Item Location: Versailles, IN 47042 Equipment Sold "AS IS, WHERE IS": All equipment/property is sold "AS IS, WHERE IS" with no warranty or guarantees, expressed or implied, No operational assessments have been made by DPA Auctions on this item, it has been photographed ONLY.



#87 - KSI Conveyor (PZ8153)

KSI Conveyor (PZ8153), KSI model 1208 - 32 seed conveyor, 12" belt 8" tube, 32' long, New belt installed by KSI in June 2016. Notes: Fixed legs supports NOT included. Used indoors to transfer seed beans from scale hopper to seed treater. Item Location: Versailles, IN 47042 Equipment Sold "AS IS, WHERE IS": All equipment/property is sold "AS IS, WHERE IS" with no warranty or guarantees, expressed or implied, No operational assessments have been made by DPA Auctions on this item, it has been photographed ONLY.



#88 - KSI Bypass Valve (PZ8154)

KSI Bypass Valve (PZ8154), KSI Bypass valve, air actuated valve used to divert seed flow to bypass treater. Notes: Item Location: Versailles, IN 47042 Equipment Sold "AS IS, WHERE IS": All equipment/property is sold "AS IS, WHERE IS" with no warranty or guarantees, expressed or implied, No operational assessments have been made by DPA Auctions on this item, it has been photographed ONLY.



#89 - 2015 Finishline Trailer (CP511, Unit 34279)

2015 Finishline Trailer (CP511, Unit 34279), 2015 Finishline Trailer, wood floor, tandem axle, ramps. Notes: PLEASE ALLOW AT LEAST 60 DAYS FOR TITLE TRANSFER. Item Location: Sauk Centre, MN 56378 Equipment Sold "AS IS, WHERE IS": All equipment/property is sold "AS IS, WHERE IS" with no warranty or guarantees, expressed or implied, No operational assessments have been made by DPA Auctions on this item, it has been photographed ONLY.



#90 - 2008 P J Gooseneck Trailer (CP512, Unit 12841)

2008 P J Gooseneck Trailer (CP512, Unit 12841), 2008 P. J. Gooseneck trailer, tandem axle, dual wheels, beaver tail, ramps, 215/75R17.5 tires. Notes: PLEASE ALLOW AT LEAST 60 DAYS FOR TITLE TRANSFER. Item Location: Sauk Centre, MN 56378 Equipment Sold "AS IS, WHERE IS": All equipment/property is sold "AS IS, WHERE IS" with no warranty or guarantees, expressed or implied, No operational assessments have been made by DPA Auctions on this item, it has been photographed ONLY.



#90A - 2006 GMC Envoy XL (TR4336)

2006 GMC Envoy XL (TR4336), Vortec gas engine, automatic transmission, 4x4, AM/FM CD radio, heat, AC, power windows, power lock, cruise control, 3rd row seating rear climate control, 146,407 miles. Notes: Vehicle has been through and inspected by dealership. Item Location: Fremont, NE 68025 Equipment Sold "AS IS, WHERE IS": All equipment/property is sold "AS IS, WHERE IS" with no warranty or guarantees, expressed or implied, No operational assessments have been made by DPA Auctions on this item, it has been photographed ONLY.



#91 - 2012 Chevrolet Silverado Crew Cab Pickup (CP510, Unit 27563)

2012 Chevrolet Silverado Crew Cab Pickup (CP510, Unit 27563), 4x4, gas engine, automatic transmission, air conditioning, heat, Am/Fm CD stereo, cruise control, power windows & locks, running boards, tonneau cover, shows 208,834 miles. Notes: PLEASE ALLOW AT LEAST 60 DAYS FOR TITLE TRANSFER. Item Location: Sauk Centre, MN 56378 Equipment Sold "AS IS, WHERE IS": All equipment/property is sold "AS IS, WHERE IS" with no warranty or guarantees, expressed or implied, No operational assessments have been made by DPA Auctions on this item, it has been photographed ONLY.



#92 - 2005 Magnum Hopper Dry Tender Trailer (PZ7774, Unit 97631)

2005 Magnum Hopper Dry Tender Trailer (PZ7774, Unit 97631), 2005 Magnum hopper bottom dry tender trailer, tandem axle, spring suspension, under hopper conveyor, rear discharge conveyor, Shurco 4500 series electric roll over tarp, 275/80R24.5 tires. Notes: PLEASE ALLOW AT LEAST 60 DAYS FOR TITLE TRANSFER. Item Location: Gluek, MN 56260 Equipment Sold "AS IS, WHERE IS": All equipment/property is sold "AS IS, WHERE IS" with no warranty or guarantees, expressed or implied, No operational assessments have been made by DPA Auctions on this item, it has been photographed ONLY.



#93 - 1996 Freightliner Truck (PZ8121, Unit 969)

1996 Freightliner Truck (PZ8121, Unit 969), Cummins M11 diesel engine, 10 speed transmission, air conditioning, heat, Am/Fm cassette radio, cruise control, tandem axle, full screw, air ride suspension, 5th wheel, wet kit, 295/75R22.5 front tires, 275/80R22.5 rear tires. Notes: Item Location: Nora Springs, IA 50458 Equipment Sold "AS IS, WHERE IS": All equipment/property is sold "AS IS, WHERE IS" with no warranty or guarantees, expressed or implied, No operational assessments have been made by DPA Auctions on this item, it has been photographed ONLY.



#94 - 1990 Ford L8000 Truck (PZ8149)

1990 Ford L8000 Truck (PZ8149), diesel engine, 6 speed transmission, heat, single axle, 10.00-20 tires, shows 229,606 miles. Notes: Item Location: Hartsburg, IL 62643 Equipment Sold "AS IS, WHERE IS": All equipment/property is sold "AS IS, WHERE IS" with no warranty or guarantees, expressed or implied, No operational assessments have been made by DPA Auctions on this item, it has been photographed ONLY.



#95 - 2007 IHC 4300 Petroleum Truck (PZ8110, Unit 0139)

2007 IHC 4300 Petroleum Truck (PZ8110, Unit 0139), DT466 diesel engine, Allison automatic transmission, air conditioning, heat, Am/Fm radio, cruise control, single axle, 2007 Progress 2800 gallon 5 compartment (800-600-500-500-400) aluminum petroleum body, 2-LectroCount LCR-11 meters, 2-electric hose reels, All-Line additive injector, 11R22.5 tires, shows 188,592 miles. Notes: Item Location: Waterloo, IA 50703 Equipment Sold "AS IS, WHERE IS": All equipment/property is sold "AS IS, WHERE IS" with no warranty or guarantees, expressed or implied, No operational assessments have been made by DPA Auctions on this item, it has been photographed ONLY.



#96 - 2000 Freighliner Feed Truck (CP506, Unit 2013)

2000 Freighliner Feed Truck (CP506, Unit 2013), Detroit Series 60 diesel engine, 13 speed transmission (Bad transmission & clutch), air conditioning, heat, Am/Fm radio, cruise control, engine brake, tandem axle, full screw, air ride suspension, CEI Pacer 5 compartment aluminum bulk feed body, auger, all hydraulic, 315/80R22.5 front tires, 295/75R22.5 rear tires, shows 369,752 miles. Notes: Transmission needs replaced but clutch is good as far as the seller knows. Please contact seller for more information. Item Location: Ayrshire, IA 50515 Equipment Sold "AS IS, WHERE IS": All equipment/property is sold "AS IS, WHERE IS" with no warranty or guarantees, expressed or implied, No operational assessments have been made by DPA Auctions on this item, it has been photographed ONLY.



#97 - 2008 Chevrolet 1500 Extended Cab Pickup (PZ8140, Unit 0194)

2008 Chevrolet 1500 Extended Cab Pickup (PZ8140, Unit 0194), 4x4, gas engine, automatic transmission, air conditioning, heat, Am/Fm CD stereo, cruise control, power locks, P265/70R17 tires, shows 206,741 miles. Notes: Item Location: Eldora, IA 50627 Equipment Sold "AS IS, WHERE IS": All equipment/property is sold "AS IS, WHERE IS" with no warranty or guarantees, expressed or implied, No operational assessments have been made by DPA Auctions on this item, it has been photographed ONLY.



#98 - 2005 GMC 2500HD Extended Cab Pickup (PZ8125, Unit 152)

2005 GMC 2500HD Extended Cab Pickup (PZ8125, Unit 152), gas engine, automatic transmission, air conditioning, heat, Am/Fm radio, running boards, LT265/75R16 tires, approx. 206,297 miles. Notes: Pickup overheats, may be a head gasket issue, weak battery, double check miles with seller. Please call seller for more information. Item Location: Chapin, IA 50427 Equipment Sold "AS IS, WHERE IS": All equipment/property is sold "AS IS, WHERE IS" with no warranty or guarantees, expressed or implied, No operational assessments have been made by DPA Auctions on this item, it has been photographed ONLY.



#99 - 2010 Ford F150XL Extended Cab Pickup (PZ8115, Unit 320)

2010 Ford F150XL Extended Cab Pickup (PZ8115, Unit 320), 4x4, gas engine, automatic transmission, air conditioning, heat, Am/Fm CD stereo, cruise control, power windows & locks, LT245/75R17 tires, shows 196,262 miles. Notes: Item Location: Waverly, IA 50677 Equipment Sold "AS IS, WHERE IS": All equipment/property is sold "AS IS, WHERE IS" with no warranty or guarantees, expressed or implied, No operational assessments have been made by DPA Auctions on this item, it has been photographed ONLY.



#100 - Sukup Fans (PZ8129)

Sukup Fans (PZ8129), 9 - Sukup fans, 3 hp, 3 phase. Notes: Item Location: Chapin, IA 50427 Equipment Sold "AS IS, WHERE IS": All equipment/property is sold "AS IS, WHERE IS" with no warranty or guarantees, expressed or implied, No operational assessments have been made by DPA Auctions on this item, it has been photographed ONLY.



#100A - 2004 Chevrolet Tahoe (TR4337)

2004 Chevrolet Tahoe (TR4337), gas engine automatic transmission, 3rd row seats, DVD player, tpw hitch, cruise control, steering wheel controls, power windows/locks/seats, dual temperature control, 4x4, 158,705 miles. Notes: Vehicle has been through and inspected by dealership. Item Location: Fremont, NE 68025 Equipment Sold "AS IS, WHERE IS": All equipment/property is sold "AS IS, WHERE IS" with no warranty or guarantees, expressed or implied, No operational assessments have been made by DPA Auctions on this item, it has been photographed ONLY.



#101 - Snowblower (PZ8128)

Snowblower (PZ8128), Snowblower, 3-point. Notes: Item Location: Chapin, IA 50427 Equipment Sold "AS IS, WHERE IS": All equipment/property is sold "AS IS, WHERE IS" with no warranty or guarantees, expressed or implied, No operational assessments have been made by DPA Auctions on this item, it has been photographed ONLY.



#102 - 2007 GMC 1500 Pickup (PZ8114, Unit 140)

2007 GMC 1500 Pickup (PZ8114, Unit 140), 4x4, gas engine, automatic transmission, air conditioning, heat, Am/Fm radio, cruise control, LT265/70R17 tires, shows 201,963 miles. Notes: Check engine and airbag lights are on. Item Location: Waverly, IA 50677 Equipment Sold "AS IS, WHERE IS": All equipment/property is sold "AS IS, WHERE IS" with no warranty or guarantees, expressed or implied, No operational assessments have been made by DPA Auctions on this item, it has been photographed ONLY.



#103 - 1999 GMC 2500 Pickup (PZ8101, Unit T041)

1999 GMC 2500 Pickup (PZ8101, Unit T041), 4x4, gas engine, automatic transmission, air conditioning, heat, Am/Fm cassette radio, running boards, tool box, LT265/75R16 tires, shows 262,420 miles. Notes: Newer bench seat, tires near new, noisy starter. Item Location: Lowden, IA 52255 Equipment Sold "AS IS, WHERE IS": All equipment/property is sold "AS IS, WHERE IS" with no warranty or guarantees, expressed or implied, No operational assessments have been made by DPA Auctions on this item, it has been photographed ONLY.



#104 - 2010 GMC Sierra SLE 4x4 Pickup (NP6009, Unit 17417)

2010 GMC Sierra SLE 4x4 Pickup (NP6009, Unit 17417), Crew Cab, Vortec 5.3L gas engine, FlexFuel, automatic transmission, heat, air conditioning, Am/Fm CD radio, power windows, locks and mirrors, cruise, 265/70R17 tires, backup sensors, tow package, Access tonneau cover, mud flaps, shows 147,316 miles. Notes: Crack in the front windshield, ball hitch DOES NOT SELL with this pickup. PLEASE ALLOW AT LEAST 60 DAYS FOR TITLE TRANSFER. Item Location: Harrold, SD 57536 Equipment Sold "AS IS, WHERE IS": All equipment/property is sold "AS IS, WHERE IS" with no warranty or guarantees, expressed or implied, No operational assessments have been made by DPA Auctions on this item, it has been photographed ONLY.



#105 - Yield 360 Soil Scan (PZ8156)

Yield 360 Soil Scan (PZ8156), Yield 360 soil scan, has the updated N Sensor, also has the one that came with it, unit has done 10-15 test, no ph sensor. Notes: Item Location: Mc Lean, IL 61754 Equipment Sold "AS IS, WHERE IS": All equipment/property is sold "AS IS, WHERE IS" with no warranty or guarantees, expressed or implied, No operational assessments have been made by DPA Auctions on this item, it has been photographed ONLY.



#106 - Ditch Witch Walk Behind Trencher (CP508)

Ditch Witch Walk Behind Trencher (CP508), Model 1620, Kohler Magnum 16 gas motor, shows 811 hours. Notes: Comes with operator and parts manuals. Item Location: Spencer, IA 51301 Equipment Sold "AS IS, WHERE IS": All equipment/property is sold "AS IS, WHERE IS" with no warranty or guarantees, expressed or implied, No operational assessments have been made by DPA Auctions on this item, it has been photographed ONLY.



#108 - 2010 Nitromaster 8000 Nh3 Bar (PD593)

2010 Nitromaster 8000 Nh3 Bar (PD593), 21 knife, 3 section shutoff, master shutoff with standard valve, John Deere Rate controller, needs some work on shank bolts and minor plumbing. Notes: Item Location: Lathrop, MO 64465 Equipment Sold "AS IS, WHERE IS": All equipment/property is sold "AS IS, WHERE IS" with no warranty or guarantees, expressed or implied, No operational assessments have been made by DPA Auctions on this item, it has been photographed ONLY.



#109 - 2007 GMC 2500HD Service Pickup (PZ8157 Unit 141)

2007 GMC 2500HD Service Pickup (PZ8157 Unit 141), gas engine, automatic transmission, heat, Am/Fm radio, service body, LT245/75R16 tires, shows 181,880 miles. Notes: Item Location: Waukon, IA 52172 Equipment Sold "AS IS, WHERE IS": All equipment/property is sold "AS IS, WHERE IS" with no warranty or guarantees, expressed or implied, No operational assessments have been made by DPA Auctions on this item, it has been photographed ONLY.



#110 - 2002 Timpfe Hopper Trailer (TH209)

2002 Timpfe Hopper Trailer (TH209), 40', 2 axles, 24.5x8.25 tires, tarp with electric opener put on in 2015, rebuilt doors in 2015, new bearings and rails on doors, was used during 2017 harvest, good tires, good brakes, farmer used, there is a fist sized hole on left side of trailer, cosmetic only. Notes: Item Location: Paris, IL 61944 Equipment Sold "AS IS, WHERE IS": All equipment/property is sold "AS IS, WHERE IS" with no warranty or guarantees, expressed or implied, No operational assessments have been made by DPA Auctions on this item, it has been photographed ONLY.



#110A - 2002 Honda Odyssey Van (TR4338)

2002 Honda Odyssey Van (TR4338), 3.5L gas engine, automatic transmission, 3rd row seats, heated setas, power seats, DVD player, AM/FM CD player, rear control climate/Radio, power sliding doors, cruise control power windows/locks, Approx. 157,000 miles. Notes: Transmission is out. Will not move vehicle engine does start. Item Location: Fremont, NE 68025 Equipment Sold "AS IS, WHERE IS": All equipment/property is sold "AS IS, WHERE IS" with no warranty or guarantees, expressed or implied, No operational assessments have been made by DPA Auctions on this item, it has been photographed ONLY.



#111 - 2015 Bobcat E35 Mini Excavator (KMK328)

2015 Bobcat E35 Mini Excavator (KMK328), E-35 long arm, Final Tier 4 Bobcat engine, has all the E51 options, cab with heat and ac, keyless, radio, deluxe display panel, hydraulic X-Change, hydraulic thumb, 24" bucket, 12" bucket, shows 221 hours. Notes: Tracks and Sprockets like new. Item Location: Concordia, KS 66901 Equipment Sold "AS IS, WHERE IS": All equipment/property is sold "AS IS, WHERE IS" with no warranty or guarantees, expressed or implied, No operational assessments have been made by DPA Auctions on this item, it has been photographed ONLY.



#112 - USC LP800 Seed Treater (DL195)

USC LP800 Seed Treater (DL195), ApronMaxx, stainless steel tank, Easy-Load II MasterFlex, very clean. Notes: Sold as is, where is. Item Location: Rose Creek, MN 55970 Equipment Sold "AS IS, WHERE IS": All equipment/property is sold "AS IS, WHERE IS" with no warranty or guarantees, expressed or implied, No operational assessments have been made by DPA Auctions on this item, it has been photographed ONLY.



#113 - 7' Series 1700 Snow Blower (KMK444)

7' Series 1700 Snow Blower (KMK444), Utility Super Compact, Series 1700, 7' wide, 3 point attach, 540 pto., single auger, adjustable discharge chute, designed for compact tractors, will work with tractors from 16.6 hp. To 69.9 hp., ideal for 33 hp. To 44 hp. Notes: Missing half of pto. Seller will load for free. Item Location: Nemaha, IA 50567 Equipment Sold "AS IS, WHERE IS": All equipment/property is sold "AS IS, WHERE IS" with no warranty or guarantees, expressed or implied, No operational assessments have been made by DPA Auctions on this item, it has been photographed ONLY.



#114 - 20 Foot Air Way (TH210)

20 Foot Air Way (TH210), 20', frame is in good condition, always shedded. Notes: Item Location: Paris, IL 61944 Equipment Sold "AS IS, WHERE IS": All equipment/property is sold "AS IS, WHERE IS" with no warranty or guarantees, expressed or implied, No operational assessments have been made by DPA Auctions on this item, it has been photographed ONLY.



#115 - 2012 John Deere 4940 Sprayer (NP6172)

2012 John Deere 4940 Sprayer (NP6172), John Deere diesel engine (S/N RG609013340), hydrostatic transmission, heat, air conditioning, Am/Fm CD radio, 1,200 gallon stainless steel liquid system, 120' boom, 5-way nozzle bodies on 15" centers, high volume pump, auto boom height, autoswath, autosteer, stainless steel chemical inductor, Firestone Radial 9100 380/105R50 row crop tires, GS3 2630 monitor, StarFire 3000 globe, shows 1,358 hours. Notes: Item Location: Bushnell, IL 61422 Equipment Sold "AS IS, WHERE IS": All equipment/property is sold "AS IS, WHERE IS" with no warranty or guarantees, expressed or implied, No operational assessments have been made by DPA Auctions on this item, it has been photographed ONLY.



#116 - 2010 New Leader L3030 G4 Dry Box (NP6173)

2010 New Leader L3030 G4 Dry Box (NP6173), with Multiplier insert, rear gate and hardware to convert to single compartment, trailer DOES NOT SELL with this lot, this bed was used with a 2012 John Deere 4940 that is on this auction, S/N 131147. Notes: Item Location: Bushnell, IL 61422 Equipment Sold "AS IS, WHERE IS": All equipment/property is sold "AS IS, WHERE IS" with no warranty or guarantees, expressed or implied, No operational assessments have been made by DPA Auctions on this item, it has been photographed ONLY.



#117 - (4) Continental Flotation Tires/Rims (NP6174)

(4) Continental Flotation Tires/Rims (NP6174), SVT flotation tires/rims, 710/70R42 size, approx. 60% tread, 12 bolt rim pattern, these tires used with the 2012 John Deere 4940 being sold on this auction. Notes: Item Location: Bushnell, IL 61422 Equipment Sold "AS IS, WHERE IS": All equipment/property is sold "AS IS, WHERE IS" with no warranty or guarantees, expressed or implied, No operational assessments have been made by DPA Auctions on this item, it has been photographed ONLY.



#118 - 2007 John Deere 4930 (TR4310)

2007 John Deere 4930 (TR4310), Diesel engine, hydrostat transmission, AM/FM CD player, Heat/AC, High boy spinner. Has 2 sets of tires. 380 Row crop tires were new this summer and are at approx. 90% tread. 710 float tires are at about 60% tread. Has fenders for row crop tires (Not on machine in good shape) Has an ITC receiver and 2600 display with auto track and section control activations. Machine has approx. 4500 hours on it. Machine was through dealer shop this spring and had about 15k of work done to it. Good solid running spreader. Notes: Item Location: Hortonville, WI 54944 Equipment Sold "AS IS, WHERE IS": All equipment/property is sold "AS IS, WHERE IS" with no warranty or guarantees, expressed or implied, No operational assessments have been made by DPA Auctions on this item, it has been photographed ONLY.



#119 - 1981 IHC 4300 Eagle (DR7164)

1981 IHC 4300 Eagle (DR7164), Cummins diesel engine, 10 speed transmission, air brakes, New Leader L2020 hydraulic dry spinner box, NEW belt has 1 season, New Leader DP.6 controller, AM/FM radio, 48X31.00-20 rear float tires. Notes: Item Location: Highland, IL 62249 Equipment Sold "AS IS, WHERE IS": All equipment/property is sold "AS IS, WHERE IS" with no warranty or guarantees, expressed or implied, No operational assessments have been made by DPA Auctions on this item, it has been photographed ONLY.



#120 - 1973 Chevy C60 (DR7165)

1973 Chevy C60 (DR7165), gas engine, 4 speed transmission, 2 speed rear end, model L20-11 hydraulic lime spreader box, slatted chain, dual spinners, 33' spread, AM radio, 9.00-20 tires, shows 24,447 miles. Notes: Item Location: Highland, IL 62249 Equipment Sold "AS IS, WHERE IS": All equipment/property is sold "AS IS, WHERE IS" with no warranty or guarantees, expressed or implied, No operational assessments have been made by DPA Auctions on this item, it has been photographed ONLY.



#122 - Nh3 Nurse Tank Unit# 32 (DR7101)

Nh3 Nurse Tank Unit# 32 (DR7101), 1000 gallon top front fill Nh3 tank, data tag, rear hitch, auto steer running gear, 11L-15 tires. Notes: Item Location: Highland, IL 62249 Equipment Sold "AS IS, WHERE IS": All equipment/property is sold "AS IS, WHERE IS" with no warranty or guarantees, expressed or implied, No operational assessments have been made by DPA Auctions on this item, it has been photographed ONLY.



#123 - Nh3 Nurse Tank Unit# 26 (DR7103)

Nh3 Nurse Tank Unit# 26 (DR7103), 1000 gallon top front fill Nh3 tank, data tag, rear hitch, auto steer running gear, 11L-15 tires. Notes: Item Location: Highland, IL 62249 Equipment Sold "AS IS, WHERE IS": All equipment/property is sold "AS IS, WHERE IS" with no warranty or guarantees, expressed or implied, No operational assessments have been made by DPA Auctions on this item, it has been photographed ONLY.



#124 - Nh3 Nurse Tank Unit# 14 (DR7104)

Nh3 Nurse Tank Unit# 14 (DR7104), 1000 gallon top front fill Nh3 tank, data tag, rear hitch, auto steer running gear, 11L-15 tires. Notes: Item Location: Highland, IL 62249 Equipment Sold "AS IS, WHERE IS": All equipment/property is sold "AS IS, WHERE IS" with no warranty or guarantees, expressed or implied, No operational assessments have been made by DPA Auctions on this item, it has been photographed ONLY.



#125 - Nh3 Nurse Tank Unit# 28 (DR7105)

Nh3 Nurse Tank Unit# 28 (DR7105), 1000 gallon top front fill Nh3 tank, data tag, rear hitch, auto steer running gear, 11L-15 tires. Notes: Item Location: Highland, IL 62249 Equipment Sold "AS IS, WHERE IS": All equipment/property is sold "AS IS, WHERE IS" with no warranty or guarantees, expressed or implied, No operational assessments have been made by DPA Auctions on this item, it has been photographed ONLY.



#126 - Nh3 Nurse Tank Unit# 21 (DR7109)

Nh3 Nurse Tank Unit# 21 (DR7109), 1000 gallon top front fill Nh3 tank, data tag, rear hitch, auto steer running gear, 11L-15 tires. Notes: Item Location: Highland, IL 62249 Equipment Sold "AS IS, WHERE IS": All equipment/property is sold "AS IS, WHERE IS" with no warranty or guarantees, expressed or implied, No operational assessments have been made by DPA Auctions on this item, it has been photographed ONLY.



#127 - Nh3 Nurse Tank Unit# 23 (DR7110)

Nh3 Nurse Tank Unit# 23 (DR7110), 1000 gallon top front fill Nh3 tank, data tag, rear hitch, auto steer running gear, 11L-15 tires. Notes: Item Location: Highland, IL 62249 Equipment Sold "AS IS, WHERE IS": All equipment/property is sold "AS IS, WHERE IS" with no warranty or guarantees, expressed or implied, No operational assessments have been made by DPA Auctions on this item, it has been photographed ONLY.



#128 - Nh3 Nurse Tank Unit# 9 (DR7112)

Nh3 Nurse Tank Unit# 9 (DR7112), 1000 gallon top front fill Nh3 tank, data tag, rear hitch, auto steer running gear, 11L-15 tires. Notes: Item Location: Highland, IL 62249 Equipment Sold "AS IS, WHERE IS": All equipment/property is sold "AS IS, WHERE IS" with no warranty or guarantees, expressed or implied, No operational assessments have been made by DPA Auctions on this item, it has been photographed ONLY.



#129 - Nh3 Nurse Tank Unit# 33 (DR7115)

Nh3 Nurse Tank Unit# 33 (DR7115), 1000 gallon top front fill Nh3 tank, data tag, rear hitch, JTI 5th wheel style running gear, 11L-15 tires. Notes: Item Location: Highland, IL 62249 Equipment Sold "AS IS, WHERE IS": All equipment/property is sold "AS IS, WHERE IS" with no warranty or guarantees, expressed or implied, No operational assessments have been made by DPA Auctions on this item, it has been photographed ONLY.



#130 - Nh3 Nurse Tank Unit# 12 (DR7117)

Nh3 Nurse Tank Unit# 12 (DR7117), 1000 gallon top front fill Nh3 tank, data tag, rear hitch, JTI 5th wheel style running gear, 11L-15 tires. Notes: Item Location: Highland, IL 62249 Equipment Sold "AS IS, WHERE IS": All equipment/property is sold "AS IS, WHERE IS" with no warranty or guarantees, expressed or implied, No operational assessments have been made by DPA Auctions on this item, it has been photographed ONLY.



#131 - Nh3 Nurse Tank Unit# 5 (DR7122)

Nh3 Nurse Tank Unit# 5 (DR7122), 1000 gallon top front fill Nh3 tank, data tag, rear hitch, auto steer running gear, 11L-15 tires. Notes: Item Location: Highland, IL 62249 Equipment Sold "AS IS, WHERE IS": All equipment/property is sold "AS IS, WHERE IS" with no warranty or guarantees, expressed or implied, No operational assessments have been made by DPA Auctions on this item, it has been photographed ONLY.



#132 - Nh3 Nurse Tank Unit# 34 (DR7123)

Nh3 Nurse Tank Unit# 34 (DR7123), 1000 gallon top front fill Nh3 tank, data tag, rear hitch, auto steer running gear, 11L-15 tires. Notes: Item Location: Highland, IL 62249 Equipment Sold "AS IS, WHERE IS": All equipment/property is sold "AS IS, WHERE IS" with no warranty or guarantees, expressed or implied, No operational assessments have been made by DPA Auctions on this item, it has been photographed ONLY.



#133 - Nh3 Nurse Tank Unit# 29 (DR7124)

Nh3 Nurse Tank Unit# 29 (DR7124), 1000 gallon top front fill Nh3 tank, data tag, rear hitch, auto steer running gear, 11L-15 tires. Notes: Item Location: Highland, IL 62249 Equipment Sold "AS IS, WHERE IS": All equipment/property is sold "AS IS, WHERE IS" with no warranty or guarantees, expressed or implied, No operational assessments have been made by DPA Auctions on this item, it has been photographed ONLY.



#134 - Nh3 Nurse Tank Unit# 31 (DR7126)

Nh3 Nurse Tank Unit# 31 (DR7126), 1000 gallon top front fill Nh3 tank, data tag, rear hitch, auto steer running gear, 11L-15 tires. Notes: Item Location: Highland, IL 62249 Equipment Sold "AS IS, WHERE IS": All equipment/property is sold "AS IS, WHERE IS" with no warranty or guarantees, expressed or implied, No operational assessments have been made by DPA Auctions on this item, it has been photographed ONLY.



#135 - Nh3 Nurse Tank Unit# 7 (DR7127)

Nh3 Nurse Tank Unit# 7 (DR7127), 1000 gallon top front fill Nh3 tank, data tag, rear hitch, auto steer running gear, 11L-15 tires. Notes: Item Location: Highland, IL 62249 Equipment Sold "AS IS, WHERE IS": All equipment/property is sold "AS IS, WHERE IS" with no warranty or guarantees, expressed or implied, No operational assessments have been made by DPA Auctions on this item, it has been photographed ONLY.



#136 - Nh3 Nurse Tank Unit# 2 (DR7128)

Nh3 Nurse Tank Unit# 2 (DR7128), 1000 gallon top front fill Nh3 tank, data tag, auto steer running gear, 11L-15 tires. Notes: Item Location: Highland, IL 62249 Equipment Sold "AS IS, WHERE IS": All equipment/property is sold "AS IS, WHERE IS" with no warranty or guarantees, expressed or implied, No operational assessments have been made by DPA Auctions on this item, it has been photographed ONLY.



#137 - Nh3 Nurse Tank Unit# 6 (DR7130)

Nh3 Nurse Tank Unit# 6 (DR7130), 1000 gallon top front fill Nh3 tank, data tag, Anderson high rise 5th wheel style running gear, adjustable axles, 11L-15 tires. Notes: Item Location: Highland, IL 62249 Equipment Sold "AS IS, WHERE IS": All equipment/property is sold "AS IS, WHERE IS" with no warranty or guarantees, expressed or implied, No operational assessments have been made by DPA Auctions on this item, it has been photographed ONLY.



#138 - Nh3 Nurse Tank Unit# 4 (DR7132)

Nh3 Nurse Tank Unit# 4 (DR7132), 1000 gallon top front fill Nh3 tank, data tag, auto steer running gear, 11L-15 tires. Notes: Item Location: Highland, IL 62249 Equipment Sold "AS IS, WHERE IS": All equipment/property is sold "AS IS, WHERE IS" with no warranty or guarantees, expressed or implied, No operational assessments have been made by DPA Auctions on this item, it has been photographed ONLY.



#139 - Nh3 Nurse Tank Unit# 8 (DR7133)

Nh3 Nurse Tank Unit# 8 (DR7133), 1000 gallon top front fill Nh3 tank, data tag, auto steer running gear, 11L-15 tires. Notes: Item Location: Highland, IL 62249 Equipment Sold "AS IS, WHERE IS": All equipment/property is sold "AS IS, WHERE IS" with no warranty or guarantees, expressed or implied, No operational assessments have been made by DPA Auctions on this item, it has been photographed ONLY.



#140 - Nh3 Nurse Tank Unit# 27 (DR7135)

Nh3 Nurse Tank Unit# 27 (DR7135), 1000 gallon top front fill Nh3 tank, data tag, auto steer running gear, 11L-15 tires. Notes: Item Location: Highland, IL 62249 Equipment Sold "AS IS, WHERE IS": All equipment/property is sold "AS IS, WHERE IS" with no warranty or guarantees, expressed or implied, No operational assessments have been made by DPA Auctions on this item, it has been photographed ONLY.



#141 - Nh3 Nurse Tank Unit# 3 (DR7138)

Nh3 Nurse Tank Unit# 3 (DR7138), 1000 gallon top front fill Nh3 tank, data tag, auto steer running gear, 11L-15 tires. Notes: Item Location: Highland, IL 62249 Equipment Sold "AS IS, WHERE IS": All equipment/property is sold "AS IS, WHERE IS" with no warranty or guarantees, expressed or implied, No operational assessments have been made by DPA Auctions on this item, it has been photographed ONLY.



#142 - Nh3 Nurse Tank Unit# 13 (DR7139)

Nh3 Nurse Tank Unit# 13 (DR7139), 1000 gallon top front fill Nh3 tank, data tag, auto steer running gear, 11L-15 tires. Notes: Item Location: Highland, IL 62249 Equipment Sold "AS IS, WHERE IS": All equipment/property is sold "AS IS, WHERE IS" with no warranty or guarantees, expressed or implied, No operational assessments have been made by DPA Auctions on this item, it has been photographed ONLY.



#143 - Nh3 Nurse Tank Unit# 25 (DR7140)

Nh3 Nurse Tank Unit# 25 (DR7140), 1000 gallon top front fill Nh3 tank, data tag, auto steer running gear, 11L-15 tires. Notes: Item Location: Highland, IL 62249 Equipment Sold "AS IS, WHERE IS": All equipment/property is sold "AS IS, WHERE IS" with no warranty or guarantees, expressed or implied, No operational assessments have been made by DPA Auctions on this item, it has been photographed ONLY.



#144 - DMI Tool Bar (DR7141)

DMI Tool Bar (DR7141), 11 knife double 4X4 frame tool bar, conversion tongue, hydraulic wings, manual gauge wheels, Continental flow meter. Notes: Item Location: Highland, IL 62249 Equipment Sold "AS IS, WHERE IS": All equipment/property is sold "AS IS, WHERE IS" with no warranty or guarantees, expressed or implied, No operational assessments have been made by DPA Auctions on this item, it has been photographed ONLY.



#145 - DMI Tool Bar (DR7143)

DMI Tool Bar (DR7143), 11 knife double 4X4 frame tool bar, conversion tongue, hydraulic wings, manual gauge wheels, Continental flow meter. Notes: Item Location: Highland, IL 62249 Equipment Sold "AS IS, WHERE IS": All equipment/property is sold "AS IS, WHERE IS" with no warranty or guarantees, expressed or implied, No operational assessments have been made by DPA Auctions on this item, it has been photographed ONLY.



#146 - DMI Tool Bar (DR7144)

DMI Tool Bar (DR7144), 11 knife double 4X4 frame tool bar, conversion tongue, hydraulic wings, manual gauge wheels, Continental flow meter. Notes: Item Location: Highland, IL 62249 Equipment Sold "AS IS, WHERE IS": All equipment/property is sold "AS IS, WHERE IS" with no warranty or guarantees, expressed or implied, No operational assessments have been made by DPA Auctions on this item, it has been photographed ONLY.



#147 - Caddy Applicator (DR7148)

Caddy Applicator (DR7148), 5 knife caddy side dress applicator, rear paddle sealers, 360 gallon Nh3 tank, Continental flow meter. Notes: Item Location: Highland, IL 62249 Equipment Sold "AS IS, WHERE IS": All equipment/property is sold "AS IS, WHERE IS" with no warranty or guarantees, expressed or implied, No operational assessments have been made by DPA Auctions on this item, it has been photographed ONLY.



#148 - 3 Point Tool Bar (DR7150)

3 Point Tool Bar (DR7150), 9 knife 3 point mount tool bar, Continental flow meter. Notes: Item Location: Highland, IL 62249 Equipment Sold "AS IS, WHERE IS": All equipment/property is sold "AS IS, WHERE IS" with no warranty or guarantees, expressed or implied, No operational assessments have been made by DPA Auctions on this item, it has been photographed ONLY.



#149 - Nh3 Bar Parts (DR7157)

Nh3 Bar Parts (DR7157), tool bars parts of U bolts, bolt rack & bolts from 1/4"-5/8" bolts are 1"-3" long, tank valves, includes racks as well. Notes: Item Location: Highland, IL 62249 Equipment Sold "AS IS, WHERE IS": All equipment/property is sold "AS IS, WHERE IS" with no warranty or guarantees, expressed or implied, No operational assessments have been made by DPA Auctions on this item, it has been photographed ONLY.



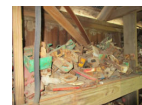
#150 - Coulters (DR7172)

Coulters (DR7172) (7) ripple coulters and brackets. Notes: Item Location: Highland, IL 62249 Equipment Sold "AS IS, WHERE IS": All equipment/property is sold "AS IS, WHERE IS" with no warranty or guarantees, expressed or implied, No operational assessments have been made by DPA Auctions on this item, it has been photographed ONLY.



#151 - Tool Bar Parts (DR7174)

Tool Bar Parts (DR7174), shelves of shank brackets and paddle cover shields, for 4" bars, rinse tanks, 15+ 3/4" valves. Notes: Item Location: Highland, IL 62249 Equipment Sold "AS IS, WHERE IS": All equipment/property is sold "AS IS, WHERE IS" with no warranty or guarantees, expressed or implied, No operational assessments have been made by DPA Auctions on this item, it has been photographed ONLY.



#152 - Nh3 Pump (DR7175)

Nh3 Pump (DR7175), Nh3 pump and electric motor, theres is another pump & motor that was kept for spare included. Notes: Item Location: Highland, IL 62249 Equipment Sold "AS IS, WHERE IS": All equipment/property is sold "AS IS, WHERE IS" with no warranty or guarantees, expressed or implied, No operational assessments have been made by DPA Auctions on this item, it has been photographed ONLY.



#153 - Willmar 500 Spreader (DR7158)

Willmar 500 Spreader (DR7158), 5 ton dry fertilizer buggy FOR PARTS, dual rear spinners, ground drive, NO PTO. Notes: Item Location: Highland, IL 62249 Equipment Sold "AS IS, WHERE IS": All equipment/property is sold "AS IS, WHERE IS" with no warranty or guarantees, expressed or implied, No operational assessments have been made by DPA Auctions on this item, it has been photographed ONLY.



#154 - Willmar 500 Spreader Unit #4 (DR7161)

Willmar 500 Spreader Unit #4 (DR7161), 5 ton dry fertilizer buggy, dual PTO drive rear spinners, ground drive web chain, tandem axle, 11L-15 flotation tires. Notes: Item Location: Highland, IL 62249 Equipment Sold "AS IS, WHERE IS": All equipment/property is sold "AS IS, WHERE IS" with no warranty or guarantees, expressed or implied, No operational assessments have been made by DPA Auctions on this item, it has been photographed ONLY.



#155 - Layco Dry Blender (DR7162)

Layco Dry Blender (DR7162), 8 ton stainless steel dry fertilizer blender, 32' stainless steel loadout conveyor, electric drive motors, digital readout scale head. Notes: Is all in working order. Dismantle and removal will be the responsibility of the buyer. This needs removed by the end of the year 2017. Item Location: Highland, IL 62249 Equipment Sold "AS IS, WHERE IS": All equipment/property is sold "AS IS, WHERE IS" with no warranty or guarantees, expressed or implied, No operational assessments have been made by DPA Auctions on this item, it has been photographed ONLY.



#156 - Spreader Parts (DR7176)

Spreader Parts (DR7176), U joints, apron chain, PTO shafts, wheel hubs and cabinets of excess spreader parts inventory. Notes: Item Location: Highland, IL 62249 Equipment Sold "AS IS, WHERE IS": All equipment/property is sold "AS IS, WHERE IS" with no warranty or guarantees, expressed or implied, No operational assessments have been made by DPA Auctions on this item, it has been photographed ONLY.



#157 - Willmar 500 Spreader Unit #2 (DR7179)

Willmar 500 Spreader Unit #2 (DR7179), 5 ton dry fertilizer buggy, dual PTO drive rear spinners, ground drive web chain, tandem axle, 11L-15 flotation tires. Notes: Item Location: Highland, IL 62249 Equipment Sold "AS IS, WHERE IS": All equipment/property is sold "AS IS, WHERE IS" with no warranty or guarantees, expressed or implied, No operational assessments have been made by DPA Auctions on this item, it has been photographed ONLY.



#158 - Willmar 500 Spreader Unit #10 (DR7180)

Willmar 500 Spreader Unit #10 (DR7180), 5 ton dry fertilizer buggy, dual PTO drive rear spinners, ground drive web chain, tandem axle, hard top cover, 11L-15 flotation tires. Notes: Item Location: Highland, IL 62249 Equipment Sold "AS IS, WHERE IS": All equipment/property is sold "AS IS, WHERE IS" with no warranty or guarantees, expressed or implied, No operational assessments have been made by DPA Auctions on this item, it has been photographed ONLY.



#159 - Willmar 600 Spreader Unit #12 (DR7182)

Willmar 600 Spreader Unit #12 (DR7182), 6 ton dry fertilizer buggy, dual PTO drive rear spinners, ground drive web chain, tandem axle, side extensions, 19.1-16.1 flotation tires. Notes: Item Location: Highland, IL 62249 Equipment Sold "AS IS, WHERE IS": All equipment/property is sold "AS IS, WHERE IS" with no warranty or guarantees, expressed or implied, No operational assessments have been made by DPA Auctions on this item, it has been photographed ONLY.



#160 - Willmar 500 Spreader Unit #8 (DR7183)

Willmar 500 Spreader Unit #8 (DR7183), 5 ton dry fertilizer buggy, dual PTO drive rear spinners, ground drive web chain, tandem axle, hard top cover, 11L-15 flotation tires. Notes: Item Location: Highland, IL 62249 Equipment Sold "AS IS, WHERE IS": All equipment/property is sold "AS IS, WHERE IS" with no warranty or guarantees, expressed or implied, No operational assessments have been made by DPA Auctions on this item, it has been photographed ONLY.



#161 - Willmar 600 Spreader Unit #5 (DR7184)

Willmar 600 Spreader Unit #5 (DR7184), 6 ton dry fertilizer buggy, dual PTO drive rear spinners, ground drive web chain, tandem axle, side extensions, 16.5L-16.1 flotation tires. Notes: Item Location: Highland, IL 62249 Equipment Sold "AS IS, WHERE IS": All equipment/property is sold "AS IS, WHERE IS" with no warranty or guarantees, expressed or implied, No operational assessments have been made by DPA Auctions on this item, it has been photographed ONLY.



#162 - Willmar 600 Spreader Unit #7 (DR7185)

Willmar 600 Spreader Unit #7 (DR7185), 6 ton dry fertilizer buggy, dual PTO drive rear spinners, ground drive web chain, tandem axle, side extensions, 16.5L-16.1 flotation tires. Notes: Item Location: Highland, IL 62249 Equipment Sold "AS IS, WHERE IS": All equipment/property is sold "AS IS, WHERE IS" with no warranty or guarantees, expressed or implied, No operational assessments have been made by DPA Auctions on this item, it has been photographed ONLY.



#163 - Conveyor (DR7186)

Conveyor (DR7186), 40' stainless steel portable conveyor, 12" cleated belt, electric drive motor. Notes: Item Location: Highland, IL 62249 Equipment Sold "AS IS, WHERE IS": All equipment/property is sold "AS IS, WHERE IS" with no warranty or guarantees, expressed or implied, No operational assessments have been made by DPA Auctions on this item, it has been photographed ONLY.



#164 - 40,000 Lb Scale (DR7156)

40,000 Lb Scale (DR7156), 9' X 22' wood deck in ground scale, digital readout, 12'X12' metal scale house. Notes: Item Location: Highland, IL 62249 Equipment Sold "AS IS, WHERE IS": All equipment/property is sold "AS IS, WHERE IS" with no warranty or guarantees, expressed or implied, No operational assessments have been made by DPA Auctions on this item, it has been photographed ONLY.



#165 - Portable Compressor (DR7163)

Portable Compressor (DR7163), 3 phase electric drive motor, compressor works, 250 gallon air tank, portable gear for around yard. Notes: Item Location: Highland, IL 62249 Equipment Sold "AS IS, WHERE IS": All equipment/property is sold "AS IS, WHERE IS" with no warranty or guarantees, expressed or implied, No operational assessments have been made by DPA Auctions on this item, it has been photographed ONLY.



#166 - Floater Tires (DR7169)

Floater Tires (DR7169), (2) 48X31.00-20 tires. Notes: Item Location: Highland, IL 62249 Equipment Sold "AS IS, WHERE IS": All equipment/property is sold "AS IS, WHERE IS" with no warranty or guarantees, expressed or implied, No operational assessments have been made by DPA Auctions on this item, it has been photographed ONLY.



#167 - Spreader Tires (DR7170)

Spreader Tires (DR7170), (6) 16.5L-16.1 tires on 8 bolt rims. Notes: Item Location: Highland, IL 62249 Equipment Sold "AS IS, WHERE IS": All equipment/property is sold "AS IS, WHERE IS" with no warranty or guarantees, expressed or implied, No operational assessments have been made by DPA Auctions on this item, it has been photographed ONLY.



#168 - Spreader Tires (DR7171)

Spreader Tires (DR7171), 1-21.5L-16.1, & 1-19L-16.1, both on 8 bolt rims. Notes: Item Location: Highland, IL 62249 Equipment Sold "AS IS, WHERE IS": All equipment/property is sold "AS IS, WHERE IS" with no warranty or guarantees, expressed or implied, No operational assessments have been made by DPA Auctions on this item, it has been photographed ONLY.



#169 - Spreader Tires (DR7178)

Spreader Tires (DR7178), (Approximately 15) 11L-15 tires for Nh3 nurse trailers or spreaders on 6 bolt wheels. Notes: Item Location: Highland, IL 62249 Equipment Sold "AS IS, WHERE IS": All equipment/property is sold "AS IS, WHERE IS" with no warranty or guarantees, expressed or implied, No operational assessments have been made by DPA Auctions on this item, it has been photographed ONLY.



#170 - 1986 Flatbed Trailer (DR7154)

1986 Flatbed Trailer (DR7154), 16' X 8' wood deck, tandem axle, bumper hitch. Notes: Item Location: Highland, IL 62249 Equipment Sold "AS IS, WHERE IS": All equipment/property is sold "AS IS, WHERE IS" with no warranty or guarantees, expressed or implied, No operational assessments have been made by DPA Auctions on this item, it has been photographed ONLY.



#171 - Implement Trailer (DR7155)

Implement Trailer (DR7155), 28' X 5.5' implement trailer, tandem axle, bumper hitch. Notes: Trailer has NO TITLE. Item Location: Highland, IL 62249 Equipment Sold "AS IS, WHERE IS": All equipment/property is sold "AS IS, WHERE IS" with no warranty or guarantees, expressed or implied, No operational assessments have been made by DPA Auctions on this item, it has been photographed ONLY.



#172 - 1970 Ford 750 Unit# 4 (DR7167)

1970 Ford 750 Unit# 4 (DR7167), gas engine, 5 speed transmission, single axle, air brakes, Willmar Loadrunner 8 ton hydraulic dry fertilizer tender box, side fold auger, rear DMI ag bumper. Notes: Item Location: Highland, IL 62249 Equipment Sold "AS IS, WHERE IS": All equipment/property is sold "AS IS, WHERE IS" with no warranty or guarantees, expressed or implied, No operational assessments have been made by DPA Auctions on this item, it has been photographed ONLY.



#173 - 1994 Chevy 2500 (DR7188)

1994 Chevy 2500 (DR7188), gas engine, automatic transmission, 4X4, rear DMI ag bumper, box mounted tool box, AM/FM radio, air conditioning, 245/75R16 tires, shows 242,578 miles. Notes: Item Location: Highland, IL 62249 Equipment Sold "AS IS, WHERE IS": All equipment/property is sold "AS IS, WHERE IS" with no warranty or guarantees, expressed or implied, No operational assessments have been made by DPA Auctions on this item, it has been photographed ONLY.



#174 - 1987 Ford F250 (DR7189)

1987 Ford F250 (DR7189), gas engine, 4 speed transmission, 4X4, rear DMI ag bumper, box mounted tool box, AM/FM cassette radio, air conditioning, cruise control, 295/75R16 tires. Notes: Item Location: Highland, IL 62249 Equipment Sold "AS IS, WHERE IS": All equipment/property is sold "AS IS, WHERE IS" with no warranty or guarantees, expressed or implied, No operational assessments have been made by DPA Auctions on this item, it has been photographed ONLY.



#175 - Business Band Radios (DR7168)

Business Band Radios (DR7168), (9) Kenwood radios, (2) portable power packs, (2) antennas. Notes: Item Location: Highland, IL 62249 Equipment Sold "AS IS, WHERE IS": All equipment/property is sold "AS IS, WHERE IS" with no warranty or guarantees, expressed or implied, No operational assessments have been made by DPA Auctions on this item, it has been photographed ONLY.



#176 - Ag Bumper (DR7173)

Ag Bumper (DR7173), cushion ag bumper w/sway hitch, Ford mounting brackets. Notes: Item Location: Highland, IL 62249 Equipment Sold "AS IS, WHERE IS": All equipment/property is sold "AS IS, WHERE IS" with no warranty or guarantees, expressed or implied, No operational assessments have been made by DPA Auctions on this item, it has been photographed ONLY.



#177 - Haz Mat Mask (DR7177)

Haz Mat Mask (DR7177), Wilson gas mask and case, NEW canister. Notes: Item Location: Highland, IL 62249 Equipment Sold "AS IS, WHERE IS": All equipment/property is sold "AS IS, WHERE IS" with no warranty or guarantees, expressed or implied, No operational assessments have been made by DPA Auctions on this item, it has been photographed ONLY.



#178 - Nh3 Tank Parts (DR7650)

Nh3 Tank Parts (DR7650), hoses, float gauges, tool bar knives, Continental flow meters, Flotrols, hydraulic & Nh3 hoses, rinse tanks. Notes: Item Location: Highland, IL 62249 Equipment Sold "AS IS, WHERE IS": All equipment/property is sold "AS IS, WHERE IS" with no warranty or guarantees, expressed or implied, No operational assessments have been made by DPA Auctions on this item, it has been photographed ONLY.



#179 - Portable Building (DR7645)

Portable Building (DR7645), 20' X 10' wood frame vinyl sided office building, asphalt shingles, all insulated & finished, window a/c unit, bathroom fixtures. Notes: NO PERSONAL property is included, ONLY building and fixtures. Dismantle, removal, transportation and liability is the responsibility of the buyer. Building needs to be removed by April 1, 2018. Item Location: Highland, IL 62249 Equipment Sold "AS IS, WHERE IS": All equipment/property is sold "AS IS, WHERE IS" with no warranty or guarantees, expressed or implied, No operational assessments have been made by DPA Auctions on this item, it has been photographed ONLY.



#180 - Dry Fertilizer Building (DR7646)

Dry Fertilizer Building (DR7646), approximately 84' X 40, wood frame building, plus 20' open front on east side, rubber roof, (6) 14' sliding doors, metal roof on open front. Notes: There is LOTS of good lumber. Dismantle, removal, transportation and liability is the responsibility of the buyer. Building needs to be removed by April 1, 2018. Item Location: Highland, IL 62249 Equipment Sold "AS IS, WHERE IS": All equipment/property is sold "AS IS, WHERE IS" with no warranty or guarantees, expressed or implied, No operational assessments have been made by DPA Auctions on this item, it has been photographed ONLY.



#181 - Spreader Parts (DR7647)

Spreader Parts (DR7647), 2-pallets of dry spreader parts, jacks, shafts, chains for Willmar 500 & 600 spreaders. Notes: Item Location: Highland, IL 62249 Equipment Sold "AS IS, WHERE IS": All equipment/property is sold "AS IS, WHERE IS" with no warranty or guarantees, expressed or implied, No operational assessments have been made by DPA Auctions on this item, it has been photographed ONLY.



#182 - Spreader Parts (DR7648)

Spreader Parts (DR7648), 2-pallets of dry spreader parts, suspension springs, PTO shafts, apron chains for Willmar 500 & 600 spreaders. Notes: Item Location: Highland, IL 62249 Equipment Sold "AS IS, WHERE IS": All equipment/property is sold "AS IS, WHERE IS" with no warranty or guarantees, expressed or implied, No operational assessments have been made by DPA Auctions on this item, it has been photographed ONLY.



#183 - Spreader Tarps (DR7649)

Spreader Tarps (DR7649), pallet lot of (10) tarps for Willmar spreaders, 8 gallon of industrial paint for Nh3 tanks. Notes: Item Location: Highland, IL 62249 Equipment Sold "AS IS, WHERE IS": All equipment/property is sold "AS IS, WHERE IS" with no warranty or guarantees, expressed or implied, No operational assessments have been made by DPA Auctions on this item, it has been photographed ONLY.



#184 - Office Equipment (DR7644)

Office Equipment (DR7644), (2) office desks, (4) file cabinets, (3) office chairs. Notes: Item Location: Highland, IL 62249 Equipment Sold "AS IS, WHERE IS": All equipment/property is sold "AS IS, WHERE IS" with no warranty or guarantees, expressed or implied, No operational assessments have been made by DPA Auctions on this item, it has been photographed ONLY.



#185 - Houle 7300 Manure Spreader (TH210)

Houle 7300 Manure Spreader (TH210), newer five knife Dietrich bar, tank was checked at Automated waste AWS in Hull Iowa. Notes: Item Location: Kingsley, IA 51028 Equipment Sold "AS IS, WHERE IS": All equipment/property is sold "AS IS, WHERE IS" with no warranty or guarantees, expressed or implied, No operational assessments have been made by DPA Auctions on this item, it has been photographed ONLY.

