

Auction catalog

Title	Online Auction - May 23, 2017 10AM Central
Description	The following line of Fertilizer, Farm Implement, Truck, Trailer & Construction Equipment will be sold online with the bidding ending on May 23, 2017. Location of the equipment is given. Bidding within the last minute before the closing of a lot will extend the bidding time by an additional minute. Be prepared to bid accordingly. For more information, contact Del Peterson & Associates: 419 West Judy Drive Fremont NE, 68025 Phone: 800-492-9090 or 402-721-4388 Fax: 402-721-4583 E-mail: auction@delpeterson.com
Date	Tue, May 23, 2017
Starts at	10:00 AM
Address	PO Box 654, Fremont, NE 68026 USA
Categories	

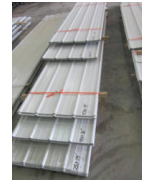
#1 - Metal Siding (DR6271)

Metal Siding (DR6271), NEW UNUSED (136) sheets, American made, White color, 8@ 18', 35@16', 13@ 14', 6@12', 37@10', 37@8', X 36" overlap coverage, 1,624 LF of coverage, Premium Pro Rib Profile style, 29 gauge. ALWAYS stored inside. Meets all USA building material engineering codes for Tested Tolerances for wind & snow. USA stamped seal of approval documentation on all products. Notes: Loadout IS available with flexible appointments. Can also offer hardware, trim, corners at wholesale prices. Item Location: Monroe, NE 68647 Equipment Sold "AS IS, WHERE IS": All equipment/property is sold "AS IS, WHERE IS" with no warranty or guarantees, expressed or implied, No operational assessments or testing have been made by Del Peterson on this item, it has been photographed ONLY.



#2 - Metal Siding (DR6272)

Metal Siding (DR6272), NEW UNUSED (166) sheets, American made, White color, 25@ 18', 40@16', 42@ 14', 28@12', 31@10', X 36" overlap coverage, 2,324 LF of coverage, Premium Pro Rib Profile style, 29 gauge. ALWAYS stored inside. Meets all USA building material engineering codes for Tested Tolerances for wind & snow. USA stamped seal of approval documentation on all products. Notes: Loadout IS available with flexible appointments. Can also offer hardware, trim, corners at wholesale prices. Item Location: Monroe, NE 68647 Equipment Sold "AS IS, WHERE IS": All equipment/property is sold "AS IS, WHERE IS" with no warranty or guarantees, expressed or implied, No operational assessments or testing have been made by Del Peterson on this item, it has been photographed ONLY.



#3 - Metal Siding (DR6273)

Metal Siding (DR6273), NEW UNUSED (82) sheets, American made, White color, 26@ 18', 10@16', 15@ 14', 5@12', 26@8', X 36" overlap coverage, 1,062 LF of coverage, Premium Pro Rib Profile style, 29 gauge. ALWAYS stored inside. Meets all USA building material engineering codes for Tested Tolerances for wind & snow. USA stamped seal of approval documentation on all products. Notes: Loadout IS available with flexible appointments. Can also offer hardware, trim, corners at wholesale prices. Item Location: Monroe, NE 68647 Equipment Sold "AS IS, WHERE IS": All equipment/property is sold "AS IS, WHERE IS" with no warranty or guarantees, expressed or implied, No operational assessments or testing have been made by Del Peterson on this item, it has been photographed ONLY.



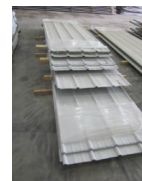
#4 - Metal Siding (DR6274)

Metal Siding (DR6274), NEW UNUSED (38) sheets, American made, White color, 24@ 18', 14@16', 15@ 14', X 36" overlap coverage, 656 LF of coverage, Premium Pro Rib Profile style, 29 gauge. ALWAYS stored inside. Meets all USA building material engineering codes for Tested Tolerances for wind & snow. USA stamped seal of approval documentation on all products. Notes: Loadout IS available with flexible appointments. Can also offer hardware, trim, corners at wholesale prices. Item Location: Monroe, NE 68647 Equipment Sold "AS IS, WHERE IS": All equipment/property is sold "AS IS, WHERE IS" with no warranty or guarantees, expressed or implied, No operational assessments or testing have been made by Del Peterson on this item, it has been photographed ONLY.



#5 - Metal Siding (DR6275)

Metal Siding (DR6275), NEW UNUSED (205) sheets, American made, White color, 43@ 14', 63@ 12', 46@ 10', 53@ 8', X 36" overlap coverage, 2,242 LF of coverage, Premium Pro Rib Profile style, 29 gauge. ALWAYS stored inside. Meets all USA building material engineering codes for Tested Tolerances for wind & snow. USA stamped seal of approval documentation on all products. Notes: Loadout IS available with flexible appointments. Can also offer hardware, trim, corners at wholesale prices. Item Location: Monroe, NE 68647 Equipment Sold "AS IS, WHERE IS": All equipment/property is sold "AS IS, WHERE IS" with no warranty or guarantees, expressed or implied, No operational assessments or testing have been made by Del Peterson on this item, it has been photographed ONLY.



#6 - Metal Siding (DR6276)

Metal Siding (DR6276), NEW UNUSED (30) sheets, American made, Green color, 16' long X 36" overlap coverage, Premium Pro Rib Profile style, 29 gauge. ALWAYS stored inside. Meets all USA building material engineering codes for Tested Tolerances for wind & snow. USA stamped seal of approval documentation on all products. Notes: Loadout IS available with flexible appointments. Can also offer hardware, trim, corners at wholesale prices. Item Location: Monroe, NE 68647 Equipment Sold "AS IS, WHERE IS": All equipment/property is sold "AS IS, WHERE IS" with no warranty or guarantees, expressed or implied, No operational assessments or testing have been made by Del Peterson on this item, it has been photographed ONLY.



#7 - Metal Siding (DR6277)

Metal Siding (DR6277), NEW UNUSED (30) sheets, American made, Green color, 16' long X 36" overlap coverage, Premium Pro Rib Profile style, 29 gauge. ALWAYS stored inside. Meets all USA building material engineering codes for Tested Tolerances for wind & snow. USA stamped seal of approval documentation on all products. Notes: Loadout IS available with flexible appointments. Can also offer hardware, trim, corners at wholesale prices. Item Location: Monroe, NE 68647 Equipment Sold "AS IS, WHERE IS": All equipment/property is sold "AS IS, WHERE IS" with no warranty or guarantees, expressed or implied, No operational assessments or testing have been made by Del Peterson on this item, it has been photographed ONLY.



#8 - Metal Siding (DR6278)

Metal Siding (DR6278), NEW UNUSED (30) sheets, American made, Green color, 16' long X 36" overlap coverage, Premium Pro Rib Profile style, 29 gauge. ALWAYS stored inside. Meets all USA building material engineering codes for Tested Tolerances for wind & snow. USA stamped seal of approval documentation on all products. Notes: Loadout IS available with flexible appointments. Can also offer hardware, trim, corners at wholesale prices. Item Location: Monroe, NE 68647 Equipment Sold "AS IS, WHERE IS": All equipment/property is sold "AS IS, WHERE IS" with no warranty or guarantees, expressed or implied, No operational assessments or testing have been made by Del Peterson on this item, it has been photographed ONLY.



#9 - Metal Siding (DR6279)

Metal Siding (DR6279), NEW UNUSED (30) sheets, American made, Green color, 16' long X 36" overlap coverage, Premium Pro Rib Profile style, 29 gauge. ALWAYS stored inside. Meets all USA building material engineering codes for Tested Tolerances for wind & snow. USA stamped seal of approval documentation on all products. Notes: Loadout IS available with flexible appointments. Can also offer hardware, trim, corners at wholesale prices. Item Location: Monroe, NE 68647 Equipment Sold "AS IS, WHERE IS": All equipment/property is sold "AS IS, WHERE IS" with no warranty or guarantees, expressed or implied, No operational assessments or testing have been made by Del Peterson on this item, it has been photographed ONLY.



#10 - Metal Siding (DR6280)

Metal Siding (DR6280), NEW UNUSED (30) sheets, American made, Green color, 16' long X 36" overlap coverage, Premium Pro Rib Profile style, 29 gauge. ALWAYS stored inside. Meets all USA building material engineering codes for Tested Tolerances for wind & snow. USA stamped seal of approval documentation on all products. Notes: Loadout IS available with flexible appointments. Can also offer hardware, trim, corners at wholesale prices. Item Location: Monroe, NE 68647 Equipment Sold "AS IS, WHERE IS": All equipment/property is sold "AS IS, WHERE IS" with no warranty or guarantees, expressed or implied, No operational assessments or testing have been made by Del Peterson on this item, it has been photographed ONLY.



#11 - Metal Siding (DR6281)

Metal Siding (DR6281), NEW UNUSED (30) sheets, American made, Burgandy color, 16'-4" long X 36" overlap coverage, Premium Pro Rib Profile style, 29 gauge. ALWAYS stored inside. Meets all USA building material engineering codes for Tested Tolerances for wind & snow. USA stamped seal of approval documentation on all products. Notes: Loadout IS available with flexible appointments. Can also offer hardware, trim, corners at wholesale prices. Item Location: Monroe, NE 68647 Equipment Sold "AS IS, WHERE IS": All equipment/property is sold "AS IS, WHERE IS" with no warranty or guarantees, expressed or implied, No operational assessments or testing have been made by Del Peterson on this item, it has been photographed ONLY.



#12 - Metal Siding (DR6282)

Metal Siding (DR6282), NEW UNUSED (30) sheets, American made, Burgandy color, 16'-4" long X 36" overlap coverage, Premium Pro Rib Profile style, 29 gauge. ALWAYS stored inside. Meets all USA building material engineering codes for Tested Tolerances for wind & snow. USA stamped seal of approval documentation on all products. Notes: Loadout IS available with flexible appointments. Can also offer hardware, trim, corners at wholesale prices. Item Location: Monroe, NE 68647 Equipment Sold "AS IS, WHERE IS": All equipment/property is sold "AS IS, WHERE IS" with no warranty or guarantees, expressed or implied, No operational assessments or testing have been made by Del Peterson on this item, it has been photographed ONLY.



#13 - Pallet Of Filters (PZ6531)

Pallet Of Filters (PZ6531), Pallet of filters for John Deere. Please see PDF of type of filter and quantities. Notes: Item Location: Kankakee, IL 60901 Equipment Sold "AS IS, WHERE IS": All equipment/property is sold "AS IS, WHERE IS" with no warranty or guarantees, expressed or implied, No operational assessments or testing have been made by Del Peterson on this item, it has been photographed ONLY.



#14 - Pallet Of Filters (PZ6532)

Pallet Of Filters (PZ6532), Pallet of filters for Case. Please see PDF of type of filter and quantities. Notes: Item Location: Kankakee, IL 60901 Equipment Sold "AS IS, WHERE IS": All equipment/property is sold "AS IS, WHERE IS" with no warranty or guarantees, expressed or implied, No operational assessments or testing have been made by Del Peterson on this item, it has been photographed ONLY.



#15 - Pallet Of Filters (PZ6533)

Pallet Of Filters (PZ6533), Pallet of filters for IH. Please see PDF of type of filter and quantities. Notes: Item Location: Kankakee, IL 60901 Equipment Sold "AS IS, WHERE IS": All equipment/property is sold "AS IS, WHERE IS" with no warranty or guarantees, expressed or implied, No operational assessments or testing have been made by Del Peterson on this item, it has been photographed ONLY.



#16 - Notch Mfg. Bale Transport Trailer (NP4853)

Notch Mfg. Bale Transport Trailer (NP4853), Model 10BT, 10 bale capacity, gross weight 22,000lbs, bale cradle 42 1/2" wide, trailer width approx. 103", 445/50R22.5 rear tires, 255/70R22.5 front tires. Notes: Item Location: Fremont, NE 68025 Equipment Sold "AS IS, WHERE IS": All equipment/property is sold "AS IS, WHERE IS" with no warranty or guarantees, expressed or implied, No operational assessments or testing have been made by Del Peterson on this item, it has been photographed ONLY.



#17 - Buffalo Box Scraper (NP4854)

Buffalo Box Scraper (NP4854), Model 55400012, approx. 12' wide, hydraulic, 295/75R22.5 tires. Notes: Blade has NEVER touched the ground. Item Location: Fremont, NE 68025 Equipment Sold "AS IS, WHERE IS": All equipment/property is sold "AS IS, WHERE IS" with no warranty or guarantees, expressed or implied, No operational assessments or testing have been made by Del Peterson on this item, it has been photographed ONLY.



#18 - Tractor Splitting Stand (NP4850)

Tractor Splitting Stand (NP4850), (5) adjustable caster wheels. Notes: Item Location: Fremont, NE 68025 Equipment Sold "AS IS, WHERE IS": All equipment/property is sold "AS IS, WHERE IS" with no warranty or guarantees, expressed or implied, No operational assessments or testing have been made by Del Peterson on this item, it has been photographed ONLY.



#19 - Tractor Wheel Trolley (NP4851)

Tractor Wheel Trolley (NP4851), hydraulic, (4) tractor wheels. Notes: Item Location: Fremont, NE 68025 Equipment Sold "AS IS, WHERE IS": All equipment/property is sold "AS IS, WHERE IS" with no warranty or guarantees, expressed or implied, No operational assessments or testing have been made by Del Peterson on this item, it has been photographed ONLY.



#20 - HFS 3 Point Combine Head Mover (NP4852)

HFS 3 Point Combine Head Mover (NP4852). Notes: Item Location: Fremont, NE 68025 Equipment Sold "AS IS, WHERE IS": All equipment/property is sold "AS IS, WHERE IS" with no warranty or guarantees, expressed or implied, No operational assessments or testing have been made by Del Peterson on this item, it has been photographed ONLY.



#21 - 2011 Stealth Night Hawk 4 x 4 (TR3391)

2011 Stealth Night Hawk 4 x 4 (TR3391) battery powered 72 volts, camo, new batteries in 2016, cargo bed that turns into seat, folding windshield, wench, gun rack and heater. automatic, runs good. Notes: Certificate of Origin will be provided. Item Location: Davis City, IA 50065 Equipment Sold "AS IS, WHERE IS": All equipment/property is sold "AS IS, WHERE IS" with no warranty or guarantees, expressed or implied, No operational assessments or testing have been made by Del Peterson on this item, it has been photographed ONLY.



#22 - 2009 Wilson DWH-500 Grain Trailer (PZ6226)

2009 Wilson DWH-500 Grain Trailer (PZ6226), 2009 Wilson DWH-500 Pace Setter 42' aluminum hopper bottom grain trailer, tandem axle, air ride suspension, 22.5 tires, roll over tarp. Notes: Damage to the right side of trailer wall panel, frame rails, hoppers under belly, landing gear, king pin and king pin plate, brake cylinder. It was hit by another vehicle. Trailer will have a salvage title. Item Location: Currie, MN 56123 Equipment Sold "AS IS, WHERE IS": All equipment/property is sold "AS IS, WHERE IS" with no warranty or guarantees, expressed or implied, No operational assessments or testing have been made by Del Peterson on this item, it has been photographed ONLY.



#23 - 1997 Mack CH613(CG199)

1997 Mack CH613(CG199), 10 speed, Mack transmission, E7-454 engine, good tires, like new steer tires, good strong running truck, flashing light that bolts to top of the headache rack, shows 111,756 miles. Notes: Item Location: Eldorado, IL 62930 Equipment Sold "AS IS, WHERE IS": All equipment/property is sold "AS IS, WHERE IS" with no warranty or guarantees, expressed or implied, No operational assessments or testing have been made by Del Peterson on this item, it has been photographed ONLY.



#24 - 1998 Celebrity 240 (DR6284)

1998 Celebrity 240 (DR6284), 24', 454 Chevy big block, deep V hull wide beam, Heritage 24' tandem axle trailer, cuddy cabin w/roof hatch, tarp cover, Quick Silver 3000 throttle, Pioneer stereo w/200 amp, full instrument panel w/depth finder, shows 360 hours. Notes: Boat has been summerized and is ready for the water. NO TITLE, Permanent Wisconsin registration on the trailer. Boat has a Wisconsin registration card. Item Location: Genoa, WI 54632 Equipment Sold "AS IS, WHERE IS": All equipment/property is sold "AS IS, WHERE IS" with no warranty or guarantees, expressed or implied, No operational assessments or testing have been made by Del Peterson on this item, it has been photographed ONLY.



#25 - 2014 Nuhn Sludge Machine (PZ-6225)

2014 Nuhn Sludge Machine (PZ-6225), Nuhn Magnum 5000 sludge machine, 5000 gallon, 15 coultter injection, Krohne system, Good Year All Weather Radial II 480/80R38 flotation tires, 27x10.50-15 tires on bar. Notes: Item Location: Moorland, IA 50566 Equipment Sold "AS IS, WHERE IS": All equipment/property is sold "AS IS, WHERE IS" with no warranty or guarantees, expressed or implied, No operational assessments or testing have been made by Del Peterson on this item, it has been photographed ONLY.



#26 - 2001 Freightliner Century Class S/T Truck (PZ6224)

2001 Freightliner Century Class S/T Truck (PZ6224), Detroit diesel engine, 10 speed transmission, air conditioning, heat, Am/Fm cassette radio, cruise control, engine brake, power windows, tandem axle, full screw, air ride suspension, 5th wheel, 295/75R22.5 tires, shows 917,992 miles, Unit# 117. Notes: Item Location: Pocahontas, IA 50574 Equipment Sold "AS IS, WHERE IS": All equipment/property is sold "AS IS, WHERE IS" with no warranty or guarantees, expressed or implied, No operational assessments or testing have been made by Del Peterson on this item, it has been photographed ONLY.



#27 - 1994 Ford F250 XLT Extended Cab Pickup (PZ6223)

1994 Ford F250 XLT Extended Cab Pickup (PZ6223), 7.5 gas engine, automatic transmission, air conditioning, heat, Am/Fm cassette radio, running boards, ag bumper hitch, brake controller, 5th wheel ball twists out, 235/85R16 tires, fronts @ 25-30%, rears @ 45-50%, shows 112,391 miles, Unit# 17819. Notes: Air conditioning needs charged, pickup runs but has engine problems, must be trailered. PLEASE ALLOW AT LEAST 60 DAYS FOR TITLE TRANSFER. Item Location: Brayton, IA 50042 Equipment Sold "AS IS, WHERE IS": All equipment/property is sold "AS IS, WHERE IS" with no warranty or guarantees, expressed or implied, No operational assessments or testing have been made by Del Peterson on this item, it has been photographed ONLY.



#28 - Deutz Allis Corn Head (NP4844)

Deutz Allis Corn Head (NP4844), 3 row, 30" row width. Notes: Item Location: Perrysburg, OH 43551 Equipment Sold "AS IS, WHERE IS": All equipment/property is sold "AS IS, WHERE IS" with no warranty or guarantees, expressed or implied, No operational assessments or testing have been made by Del Peterson on this item, it has been photographed ONLY.



#29 - 3 Point Cultivator (NP4845)

3 Point Cultivator (NP4845), 10 shank, tires need replaced. Notes: Item Location: Perrysburg, OH 43551 Equipment Sold "AS IS, WHERE IS": All equipment/property is sold "AS IS, WHERE IS" with no warranty or guarantees, expressed or implied, No operational assessments or testing have been made by Del Peterson on this item, it has been photographed ONLY.



#30 - 1990 CaseIH 265 Offset Tractor (NP4856)

1990 CaseIH 265 Offset Tractor (NP4856), K3H L290L diesel engine, manual transmission, roll bar, 540 PTO, Firestone 11.2-28 rear tires, 5.50-16SL front tires (Seller has replacement tires that will go with this tractor), shows 1,799 hours. Notes: Tractor has been used lightly as a mow tractor for the last 5 years. Tires need to be replaced but tractor is currently driveable. Seller also started having an issue with the battery last year, battery would over heat and boil over, had alternator looked at by a local mechanic and it was fine, mechanic believed there to be a problem with the voltage regulator. Item Location: Walstonburg, NC 27888 Equipment Sold "AS IS, WHERE IS": All equipment/property is sold "AS IS, WHERE IS" with no warranty or guarantees, expressed or implied, No operational assessments or testing have been made by Del Peterson on this item, it has been photographed ONLY.



#31 - 2011 Tensas Gooseneck Trailer (NP4857)

2011 Tensas Gooseneck Trailer (NP4857), Model 750GN, approx. 28' length from gooseneck to rear frame, approx. 98" wide, 9,000lb lift capacity, 6" lift cylinder, tandem axle (2-7,000lb axles), 235/85R16 tires (2 tires have damage from sitting in the sun and will need to replace 1 tire to pull down the road), lights, brakes. Notes: Item Location: Walstonburg, NC 27888 Equipment Sold "AS IS, WHERE IS": All equipment/property is sold "AS IS, WHERE IS" with no warranty or guarantees, expressed or implied, No operational assessments or testing have been made by Del Peterson on this item, it has been photographed ONLY.



#32 - 1994 Terra Gator 1803 Liquid Floater (NP4859)

1994 Terra Gator 1803 Liquid Floater (NP4859), Cat 3208 diesel engine, 18 speed transmission, heat, Am/Fm cassette radio, 1,550 gallon stainless steel liquid system (S/N L150290), 70' boom, foam marker, 55 gallon stainless steel foam marker tank, poly rinse tank, stainless steel chemical eductor, 66x43.00-25 tires, Micro-Trak Calc-An-Acre, Raven SCS440 controller, shows 37,342 miles, shows 4,540 hours. Notes: New batteries. This machine has a power steering issue, please contact seller for more details. Hasn't been used for spraying in 2 1/2 years. Item Location: Oregon, MO 64473 Equipment Sold "AS IS, WHERE IS": All equipment/property is sold "AS IS, WHERE IS" with no warranty or guarantees, expressed or implied, No operational assessments or testing have been made by Del Peterson on this item, it has been photographed ONLY.



#33 - 1960 Horizontal Aluminum Liquid Storage Tank (NP4860)

1960 Horizontal Aluminum Liquid Storage Tank (NP4860), approx. 22,000 gallon capacity, saddles, Nat'l Board #2113, South Tank. Notes: This item must be dismantled and removed by June 23, 2017, NO EXCEPTIONS. Dismantle, removal and transportation is at the expense, risk and liability of the buyer. Item Location: Forest City, MO 64451 Equipment Sold "AS IS, WHERE IS": All equipment/property is sold "AS IS, WHERE IS" with no warranty or guarantees, expressed or implied, No operational assessments or testing have been made by Del Peterson on this item, it has been photographed ONLY.



#34 - 2009 John Deere 4930 Sprayer (NP4633)

2009 John Deere 4930 Sprayer (NP4633), John Deere diesel engine, hydrostatic transmission, heat, air conditioning, Am/Fm radio, 1,200 gallon stainless steel liquid system, 120' boom, 5-way nozzle bodies, poly rinse tank, stainless steel chemical eductor, 380/105R50 tires, GreenStar 2600 display, shows 4,013 hours. Notes: 2nd owner machine, always FARMER OWNED. Item Location: New Holland, IL 62671 Equipment Sold "AS IS, WHERE IS": All equipment/property is sold "AS IS, WHERE IS" with no warranty or guarantees, expressed or implied, No operational assessments or testing have been made by Del Peterson on this item, it has been photographed ONLY.



#35 - Double NH3 Nurse Tanks (NP4863)

Double NH3 Nurse Tanks (NP4863), double 1,000 gallon NH3 tanks, 4 wheel double tank gear, 16.5L-16.1 flotation tires, 1 - 1976 Chemi-Trol Chemical Company, top front fill, water tank, data plate, S/N 205321, Nat'l Board #205321, Tank #2A, 1 - 1976 Chemi-Trol Chemical Company, top front fill, data plate, S/N 205435, Nat'l Board #205435, Tank #2B. Notes: Item Location: Troy, KS 66087 Equipment Sold "AS IS, WHERE IS": All equipment/property is sold "AS IS, WHERE IS" with no warranty or guarantees, expressed or implied, No operational assessments or testing have been made by Del Peterson on this item, it has been photographed ONLY.



#36 - Double NH3 Nurse Tanks (NP4864)

Double NH3 Nurse Tanks (NP4864), double 1,000 gallon NH3 tanks, 4 wheel double tank gear, 16.5L-16.1 flotation tires, 1 - 1973 Chemi-Trol Chemical Company, extreme front fill, water tank, data plate, S/N 159805, Nat'l Board #159805, Tank #1A, 1 - 1973 Chemi-Trol Chemical Company, extreme front fill, data plate, S/N 159804, Nat'l Board #159804, Tank #1B. Notes: Item Location: Troy, KS 66087 Equipment Sold "AS IS, WHERE IS": All equipment/property is sold "AS IS, WHERE IS" with no warranty or guarantees, expressed or implied, No operational assessments or testing have been made by Del Peterson on this item, it has been photographed ONLY.



#37 - Anhydrous Storage Tank (NP4875)

Anhydrous Storage Tank (NP4875), approx. 33,669 gallon capacity, tank volume gauge, data plate, Serial SUNX-33590, WG 33669, DOT - 112A - 340W, BLT 1969, Hydrostatic test 1990. Notes: This is being sold as the TANK ONLY, pop-off valves on top and bottom of tank DO NOT SELL. This tank must be dismantled and removed by June 23, 2017, no exceptions. Dismantle, removal and transportation is at the expense, risk and liability of the buyer. Item Location: Copeland, KS 67837 Equipment Sold "AS IS, WHERE IS": All equipment/property is sold "AS IS, WHERE IS" with no warranty or guarantees, expressed or implied, No operational assessments or testing have been made by Del Peterson on this item, it has been photographed ONLY.



#38 - Ray-Man Portable Conveyor (NP4873)

Ray-Man Portable Conveyor (NP4873), Model SC10X27, approx. 27' length x 10" belt, Farm Duty Motor 3HP electric motor, P175/80R13 tires. Notes: Item Location: Creston, IA 50801 Equipment Sold "AS IS, WHERE IS": All equipment/property is sold "AS IS, WHERE IS" with no warranty or guarantees, expressed or implied, No operational assessments or testing have been made by Del Peterson on this item, it has been photographed ONLY.



#39 - KBH Liquid Applicator (NP4871)

KBH Liquid Applicator (NP4871), 11 coulter, hydraulic wings, 700 gallon poly liquid tank, John Blue LM4455 pump, 16.5-16.1 flotation tires. Notes: Item Location: Creston, IA 50801 Equipment Sold "AS IS, WHERE IS": All equipment/property is sold "AS IS, WHERE IS" with no warranty or guarantees, expressed or implied, No operational assessments or testing have been made by Del Peterson on this item, it has been photographed ONLY.



#40 - Fertilizer Leg (PZ6234)

Fertilizer Leg (PZ6234), Approx. 30' stainless steel fertilizer leg, leg top and bottom roller and bearing are New in 2016. Notes: Leg is on the ground. Item Location: Metcalf, IL 61940 Equipment Sold "AS IS, WHERE IS": All equipment/property is sold "AS IS, WHERE IS" with no warranty or guarantees, expressed or implied, No operational assessments or testing have been made by Del Peterson on this item, it has been photographed ONLY.



#41 - 1965 Horizontal Aluminum Liquid Storage Tank (NP4861)

1965 Horizontal Aluminum Liquid Storage Tank (NP4861), approx. 22,000 gallon capacity, saddles, volume gauge, Nat'l Board #3370, Middle Tank. Notes: Tank has a dent in it (see pictures), but tank DOES NOT leak. This item must be dismantled and removed by June 23, 2017, NO EXCEPTIONS. Dismantle, removal and transportation is at the expense, risk and liability of the buyer. Item Location: Forest City, MO 64451 Equipment Sold "AS IS, WHERE IS": All equipment/property is sold "AS IS, WHERE IS" with no warranty or guarantees, expressed or implied, No operational assessments or testing have been made by Del Peterson on this item, it has been photographed ONLY.



#42 - 2015 Sudenga Unloader (PZ6235)

2015 Sudenga Unloader (PZ6235), 2015 Sudenga FH500 undercar auger unloader, 7.5 hp 220 or 3 phase motor, portable. Notes: Used the portable undercar with leg for hopper bottom and railcars, good shape. Item Location: Metcalf, IL 61940 Equipment Sold "AS IS, WHERE IS": All equipment/property is sold "AS IS, WHERE IS" with no warranty or guarantees, expressed or implied, No operational assessments or testing have been made by Del Peterson on this item, it has been photographed ONLY.



#43 - Layco Railcar Unloader (PZ6236)

Layco Railcar Unloader (PZ6236), Layco 150 ton per hour stainless steel railcar unloader, electric motor. Notes: Good shape. Item Location: Metcalf, IL 61940 Equipment Sold "AS IS, WHERE IS": All equipment/property is sold "AS IS, WHERE IS" with no warranty or guarantees, expressed or implied, No operational assessments or testing have been made by Del Peterson on this item, it has been photographed ONLY.



#44 - New Leader Monitor (PZ6237)

New Leader Monitor (PZ6237), New Leader DP.6 Plus VRT rate controller. Notes: Item Location: Metcalf, IL 61940 Equipment Sold "AS IS, WHERE IS": All equipment/property is sold "AS IS, WHERE IS" with no warranty or guarantees, expressed or implied, No operational assessments or testing have been made by Del Peterson on this item, it has been photographed ONLY.



#45 - 1999 Freightliner Feed Truck (PZ6227)

1999 Freightliner Feed Truck (PZ6227), Detroit Series 60 diesel engine, Eaton Fuller automatic transmission, air conditioning, heat, cruise control, engine brake, tandem axle, full screw, air ride suspension, Sudenga model ST920R-95-12-03 bulk feed body (S/N 9684), hydraulic auger, roll over tarp, 385/65R22.5 front tires, 295/75R22.5 rear tires, shows 803,269 miles, Notes: Engine has a Knock in it. Please call seller for more information. Item Location: Rolfe, IA 50581 Equipment Sold "AS IS, WHERE IS": All equipment/property is sold "AS IS, WHERE IS" with no warranty or guarantees, expressed or implied, No operational assessments or testing have been made by Del Peterson on this item, it has been photographed ONLY.



#46 - USC LP800 Seed Treater (NP4874)

USC LP800 Seed Treater (NP4874), 30 gallon stainless steel mix tank, calibration tube, Ace Roto-Mold 5 gallon square poly tank, (2) MasterFlex Easy-Load II Model 77200-52, control board. Notes: Item Location: Creston, IA 50801 Equipment Sold "AS IS, WHERE IS": All equipment/property is sold "AS IS, WHERE IS" with no warranty or guarantees, expressed or implied, No operational assessments or testing have been made by Del Peterson on this item, it has been photographed ONLY.



#47 - 2016 Blu-Jet AT4020 All-Terrain JetStream Injection Toolbar

2016 Blu-Jet AT4020 All-Terrain JetStream Injection Toolbar, 25 row on 30" spacing to match at 24 row 30" planter (60'), hydraulic wings, 2,000 gallon poly liquid tank, 3" bottom fill plumbing, ISOBUS application, 380/105R50 tires. Notes: 2016 NEW BAR with warranty. Item Location: Fort Dodge, IA 50501 Equipment Sold "AS IS, WHERE IS": All equipment/property is sold "AS IS, WHERE IS" with no warranty or guarantees, expressed or implied, No operational assessments or testing have been made by Del Peterson on this item, it has been photographed ONLY.



#48 - 2000 Freightliner FLD120 Day Cab Truck (NP4947)

2000 Freightliner FLD120 Day Cab Truck (NP4947), Cummins N-14 Red Top diesel engine, Rockwell 10 speed transmission, heat, air conditioning, Am/Fm cassette radio, tilt wheel, Jake brake, tandem axle, air ride suspension, 5th wheel plate, shows 720,879 miles. Notes: Item Location: Coal Valley, IL 61240 Equipment Sold "AS IS, WHERE IS": All equipment/property is sold "AS IS, WHERE IS" with no warranty or guarantees, expressed or implied, No operational assessments or testing have been made by Del Peterson on this item, it has been photographed ONLY.



#49 - Horizontal Aluminum Liquid Storage Tank (NP4862)

Horizontal Aluminum Liquid Storage Tank (NP4862), approx. 22,000 gallon capacity, saddles, North Tank. Notes: This item must be dismantled and removed by June 23, 2017, NO EXCEPTIONS. Dismantle, removal and transportation is at the expense, risk and liability of the buyer. Item Location: Forest City, MO 64451 Equipment Sold "AS IS, WHERE IS": All equipment/property is sold "AS IS, WHERE IS" with no warranty or guarantees, expressed or implied, No operational assessments or testing have been made by Del Peterson on this item, it has been photographed ONLY.



#50 - NH3 Storage Tank (PZ6228)

NH3 Storage Tank (PZ6228), approx. 18,000 gallon NH3 storage tank, tank volume gauge, tank and valve only, NO data plate, concrete saddles. Notes: This tank must be removed by August 31, 2017 with NO exceptions. Dismantle, removal and transportation is at the expense, risk and liability of the buyer. Item Location: Manly, IA 50456 Equipment Sold "AS IS, WHERE IS": All equipment/property is sold "AS IS, WHERE IS" with no warranty or guarantees, expressed or implied, No operational assessments or testing have been made by Del Peterson on this item, it has been photographed ONLY.



#51 - New Six-Way Blade Attachment (TR3347)

New Six-Way Blade Attachment (TR3347), 7' Kik-Way 6W Dozer blade, 965lbs, 22" tall. 10 degree blade tilt, 30 degree left to right, Electrical control kit, hydraulic couplers, 4 cylinders, cutting edge, universal mount. Notes: Item Location: Fremont, NE 68025 Equipment Sold "AS IS, WHERE IS": All equipment/property is sold "AS IS, WHERE IS" with no warranty or guarantees, expressed or implied, No operational assessments or testing have been made by Del Peterson on this item, it has been photographed ONLY.



#52 - 2008 Sea Doo Jet Ski (TR3399)

2008 Sea Doo Jet Ski (TR3399), Model 155, Rotax gas motor, forward and reverse, front cooler/storage, all gauges work, new battery, yacht club trailer, buddy bearings, 62 hours. Notes: Item Location: Fremont, NE 68025 Equipment Sold "AS IS, WHERE IS": All equipment/property is sold "AS IS, WHERE IS" with no warranty or guarantees, expressed or implied, No operational assessments or testing have been made by Del Peterson on this item, it has been photographed ONLY.



#53 - Ace Roto-Mold Liquid Tank (NP4899)

Ace Roto-Mold Liquid Tank (NP4899), poly, 200 gallon capacity. Notes: Item Location: Poseyville, IN 47633 Equipment Sold "AS IS, WHERE IS": All equipment/property is sold "AS IS, WHERE IS" with no warranty or guarantees, expressed or implied, No operational assessments or testing have been made by Del Peterson on this item, it has been photographed ONLY.



#54 - (2) Poly Saddle Liquid Tanks (NP4900)

(2) Poly Saddle Liquid Tanks (NP4900), 100 gallon capacity each, with discharge hose. Notes: Item Location: Poseyville, IN 47633 Equipment Sold "AS IS, WHERE IS": All equipment/property is sold "AS IS, WHERE IS" with no warranty or guarantees, expressed or implied, No operational assessments or testing have been made by Del Peterson on this item, it has been photographed ONLY.



#55 - Poly Liquid Tank (NP4902)

Poly Liquid Tank (NP4902), 325 gallon capacity. Notes: Item Location: Poseyville, IN 47633 Equipment Sold "AS IS, WHERE IS": All equipment/property is sold "AS IS, WHERE IS" with no warranty or guarantees, expressed or implied, No operational assessments or testing have been made by Del Peterson on this item, it has been photographed ONLY.



#56 - John Deere L110 Mower (NP4889)

John Deere L110 Mower (NP4889), automatic, Kohler 17.5HP OHV gas engine, 42" cut, shows 949.8 hours. Notes: Item Location: Poseyville, IN 47633 Equipment Sold "AS IS, WHERE IS": All equipment/property is sold "AS IS, WHERE IS" with no warranty or guarantees, expressed or implied, No operational assessments or testing have been made by Del Peterson on this item, it has been photographed ONLY.



#57 - Almaco Research Cone Planter (NP4888)

Almaco Research Cone Planter (NP4888), Model AJD4RP2, hydraulic, 4 row, 30" row width, 7.50-15 tires, single operator seat. Notes: Item Location: Poseyville, IN 47633 Equipment Sold "AS IS, WHERE IS": All equipment/property is sold "AS IS, WHERE IS" with no warranty or guarantees, expressed or implied, No operational assessments or testing have been made by Del Peterson on this item, it has been photographed ONLY.



#58 - Single Row Corn Planter (NP4890)

Single Row Corn Planter (NP4890), 3 point, 18x8.50-10 tires. Notes: Item Location: Poseyville, IN 47633 Equipment Sold "AS IS, WHERE IS": All equipment/property is sold "AS IS, WHERE IS" with no warranty or guarantees, expressed or implied, No operational assessments or testing have been made by Del Peterson on this item, it has been photographed ONLY.



#59 - 2000 Almaco Research Planter (NP4897)

2000 Almaco Research Planter (NP4897), Model TP2, mounted on John Deere 1750 Conservation planter frame (S/N H01750R685341), 4 row, 30" row width, dual operator seats, row markers, Almaco Model CP control board (S/N 00-010), hydraulic, (4) extra John Deere planter boxes NEVER USED (see photos). Notes: Item Location: Poseyville, IN 47633 Equipment Sold "AS IS, WHERE IS": All equipment/property is sold "AS IS, WHERE IS" with no warranty or guarantees, expressed or implied, No operational assessments or testing have been made by Del Peterson on this item, it has been photographed ONLY.



#60 - Bush Hog Tiller (NP4892)

Bush Hog Tiller (NP4892), Model RTS40 - 03, 3 point, 540 PTO, 3' width, Notes: Item Location: Poseyville, IN 47633 Equipment Sold "AS IS, WHERE IS": All equipment/property is sold "AS IS, WHERE IS" with no warranty or guarantees, expressed or implied, No operational assessments or testing have been made by Del Peterson on this item, it has been photographed ONLY.



#61 - NH3 Storage Tank (PZ6229)

NH3 Storage Tank (PZ6229), approx. 12,000 gallon NH3 storage tank, tank volume gauge, tank and valve only, NO data plate, concrete saddles. Notes: This tank must be removed by August 31, 2017 with NO exceptions. Dismantle, removal and transportation is at the expense, risk and liability of the buyer. Item Location: Manly, IA 50456 Equipment Sold "AS IS, WHERE IS": All equipment/property is sold "AS IS, WHERE IS" with no warranty or guarantees, expressed or implied, No operational assessments or testing have been made by Del Peterson on this item, it has been photographed ONLY.



#62 - SnowEx Salt Spreader (NP4891)

SnowEx Salt Spreader (NP4891), 2", receiver mount, single spinner. Notes: Item Location: Poseyville, IN 47633 Equipment Sold "AS IS, WHERE IS": All equipment/property is sold "AS IS, WHERE IS" with no warranty or guarantees, expressed or implied, No operational assessments or testing have been made by Del Peterson on this item, it has been photographed ONLY.



#63 - SpeeCo Quick Hitch (NP4893)

SpeeCo Quick Hitch (NP4893), 3 Point. Notes: Item Location: Poseyville, IN 47633 Equipment Sold "AS IS, WHERE IS": All equipment/property is sold "AS IS, WHERE IS" with no warranty or guarantees, expressed or implied, No operational assessments or testing have been made by Del Peterson on this item, it has been photographed ONLY.



#64 - New Kwik-Way V-Blade (TR3349)

New Kwik-Way V-Blade (TR3349), Kwik-Way angle blade attachment, Individual blades can be used to push dirt or snow out with V-blade or scooped when blades are adjusted, 30 degree tilt left to right, Electronic/hydraulic controls, 2 cylinders, quick connect couplers, trip springs, louchouts, cutting edge, universal mount, 28.25" height, width options - 5'-9' when adjusted. Notes: Item Location: Fremont, NE 68025 Equipment Sold "AS IS, WHERE IS": All equipment/property is sold "AS IS, WHERE IS" with no warranty or guarantees, expressed or implied, No operational assessments or testing have been made by Del Peterson on this item, it has been photographed ONLY.



#65 - Blu-Jet AT4010 Liquid Applicator (TR3400)

Blu-Jet AT4010 Liquid Applicator (TR3400), 1100 gal poly tank, 15 row, 320/90R46 tires, Raven SCS 440 monitor. Notes: Near new condition. Item Location: Pender, NE 68047 Equipment Sold "AS IS, WHERE IS": All equipment/property is sold "AS IS, WHERE IS" with no warranty or guarantees, expressed or implied, No operational assessments or testing have been made by Del Peterson on this item, it has been photographed ONLY.



#66 - 2005 John Deere 5325 Tractor (NP4848)

2005 John Deere 5325 Tractor (NP4848), 2WD, John Deere 5 cylinder diesel engine, Sync Shuttle transmission, roll bar, front tractor weights, 2 hydraulic ports, 540 PTO, 14.9-28 rear tires, 7.50-16 front tire size, shows 397 hours. Notes: Step missing on left hand side. Item Location: Abbott, TX 76621 Equipment Sold "AS IS, WHERE IS": All equipment/property is sold "AS IS, WHERE IS" with no warranty or guarantees, expressed or implied, No operational assessments or testing have been made by Del Peterson on this item, it has been photographed ONLY.



#67 - 1997 John Deere 5310 Tractor (NP4847)

1997 John Deere 5310 Tractor (NP4847), 2WD, 3 cylinder diesel engine, 9x3 transmission, canopy, front weights, 540 PTO, quick hitch, new hydraulic filter and screen, 7.50-16 front tires, 14.1-28 rear tires, shows 826 hours. Notes: Fuel gauge DOES NOT WORK. Item Location: Caldwell, TX 77836 Equipment Sold "AS IS, WHERE IS": All equipment/property is sold "AS IS, WHERE IS" with no warranty or guarantees, expressed or implied, No operational assessments or testing have been made by Del Peterson on this item, it has been photographed ONLY.



#68 - Doyle Vertical Dry Blender (NP4872)

Doyle Vertical Dry Blender (NP4872), 10 ton capacity, electric motor, side load hopper, Rice Lake weighing systems, NO scale head or digital readout. Notes: Item Location: Creston, IA 50801 Equipment Sold "AS IS, WHERE IS": All equipment/property is sold "AS IS, WHERE IS" with no warranty or guarantees, expressed or implied, No operational assessments or testing have been made by Del Peterson on this item, it has been photographed ONLY.



#69 - (5) Tractor Weights (NP4894)

(5) Tractor Weights (NP4894). Notes: Item Location: Poseyville, IN 47633 Equipment Sold "AS IS, WHERE IS": All equipment/property is sold "AS IS, WHERE IS" with no warranty or guarantees, expressed or implied, No operational assessments or testing have been made by Del Peterson on this item, it has been photographed ONLY.



#70 - Lockers (NP4898)

Lockers (NP4898), 16 locaker cubes. Notes: Item Location: Poseyville, IN 47633 Equipment Sold "AS IS, WHERE IS": All equipment/property is sold "AS IS, WHERE IS" with no warranty or guarantees, expressed or implied, No operational assessments or testing have been made by Del Peterson on this item, it has been photographed ONLY.



#71 - Bush Hog Rear Blade (NP4901)

Bush Hog Rear Blade (NP4901), Model 7008, 3 point, 8' blade width. Notes: Item Location: Poseyville, IN 47633 Equipment Sold "AS IS, WHERE IS": All equipment/property is sold "AS IS, WHERE IS" with no warranty or guarantees, expressed or implied, No operational assessments or testing have been made by Del Peterson on this item, it has been photographed ONLY.



#72 - Rear Blade (NP4903)

Rear Blade (NP4903), 3 point, 6' blade width. Notes: Item Location: Poseyville, IN 47633 Equipment Sold "AS IS, WHERE IS": All equipment/property is sold "AS IS, WHERE IS" with no warranty or guarantees, expressed or implied, No operational assessments or testing have been made by Del Peterson on this item, it has been photographed ONLY.



#73 - Pump Compressor (PZ6230)

Pump Compressor (PZ6230), Corken compressor, electric motor, 3 station loadouts, steel stands, plumbing. Notes: This item must be removed by August 31, 2017 with NO exceptions. Dismantle, removal and transportation is at the expense, risk and liability of the buyer. Item Location: Manly, IA 50456 Equipment Sold "AS IS, WHERE IS": All equipment/property is sold "AS IS, WHERE IS" with no warranty or guarantees, expressed or implied, No operational assessments or testing have been made by Del Peterson on this item, it has been photographed ONLY.



#74 - Ring Compressor (NP4904)

Ring Compressor (NP4904), Model VFC600A-7W, 3 phase, 4.5HP. Notes: Item Location: Poseyville, IN 47633 Equipment Sold "AS IS, WHERE IS": All equipment/property is sold "AS IS, WHERE IS" with no warranty or guarantees, expressed or implied, No operational assessments or testing have been made by Del Peterson on this item, it has been photographed ONLY.



#75 - Ring Compressor (NP4906)

Ring Compressor (NP4906), Model VFC600A-7W, 3 phase, 4.5HP. Notes: Item Location: Poseyville, IN 47633 Equipment Sold "AS IS, WHERE IS": All equipment/property is sold "AS IS, WHERE IS" with no warranty or guarantees, expressed or implied, No operational assessments or testing have been made by Del Peterson on this item, it has been photographed ONLY.



#76 - Ring Compressor (NP4905)

Ring Compressor (NP4905), Model VFC600A-7W, 3 phase, 4.5HP. Notes: Item Location: Poseyville, IN 47633 Equipment Sold "AS IS, WHERE IS": All equipment/property is sold "AS IS, WHERE IS" with no warranty or guarantees, expressed or implied, No operational assessments or testing have been made by Del Peterson on this item, it has been photographed ONLY.



#77 - (2) Tractor Weights (NP4895)

(2) Tractor Weights (NP4895), 40lb each. Notes: Item Location: Poseyville, IN 47633 Equipment Sold "AS IS, WHERE IS": All equipment/property is sold "AS IS, WHERE IS" with no warranty or guarantees, expressed or implied, No operational assessments or testing have been made by Del Peterson on this item, it has been photographed ONLY.



#78 - NEW Hitch Doc Fuel Trailer

NEW Hitch Doc Fuel Trailer, NEW Hitch Doc Fuel Trailer, Model HFC500, nose storage compartment, 10 gauge double seam welded tank, full length baffled tanks, 2" anti-slosh tank filler cap and vent, 1-1/2" drain plug, electric brakes w/ breakaway system and safety chains, liquid - two component paint and primer, 25 GPM 12 volt fuel pump, 1" x 18' hose with retractable reel & auto shut-off nozzle, 10 Micron filter, 7,000lbs square lift jack, dual torsion axles: 3,500lbs, DOT approved incandescent tail lights, stop lights, front and rear side marker lights, adjustable 2-5/16" ball hitch, fuel gauge with infinite fuel level indicator, rock guard kit, 205/75/15 tires and rims, bolt on fenders. Notes: Item Location: Fremont, NE 68025 Equipment Sold "AS IS, WHERE IS": All equipment/property is sold "AS IS, WHERE IS" with no warranty or guarantees, expressed or implied, No operational assessments or testing have been made by Del Peterson on this item, it has been photographed ONLY.



#79 - 1996 John Deere 9600 Combine (RMC 041)

1996 John Deere 9600 Combine (RMC 041), John Deere diesel engine, hydrostatic drive, rear hydraulic spreader, grain tank extensions, AM/FM cassette radio, NO MONITOR, 18.4-38 front tires and duals. Notes: Combine has approximately 4400 engine hours. Item Location: Lake Village, AR 71653 Equipment Sold "AS IS, WHERE IS": All equipment/property is sold "AS IS, WHERE IS" with no warranty or guarantees, expressed or implied, No operational assessments or testing have been made by Del Peterson on this item, it has been photographed ONLY.



#80 - John Deere 6620 Sidehill (RMC 044)

John Deere 6620 Sidehill (RMC 044), John Deere diesel engine, 4 speed transmission, cab heat/air conditioning. Notes: There is a spreader that is included but not seen in pictures. Item Location: Lake Village, AR 71653 Equipment Sold "AS IS, WHERE IS": All equipment/property is sold "AS IS, WHERE IS" with no warranty or guarantees, expressed or implied, No operational assessments or testing have been made by Del Peterson on this item, it has been photographed ONLY.



#81 - Bigham Brothers Bed Chisel (DR 6325)

Bigham Brothers Bed Chisel (DR 6325), 20' single pass bed chisel, 3 point mount. Notes: Item Location: Lake Village, AR 71653 Equipment Sold "AS IS, WHERE IS": All equipment/property is sold "AS IS, WHERE IS" with no warranty or guarantees, expressed or implied, No operational assessments or testing have been made by Del Peterson on this item, it has been photographed ONLY.



#82 - International 490 (RMC 036)

International 490 (RMC 036), 28' tandem disc, hydraulic wings, 9.5L-15 tires. Notes: Item Location: Lake Village, AR 71653 Equipment Sold "AS IS, WHERE IS": All equipment/property is sold "AS IS, WHERE IS" with no warranty or guarantees, expressed or implied, No operational assessments or testing have been made by Del Peterson on this item, it has been photographed ONLY.



#83 - John Deere 960 (RMC 042)

John Deere 960 (RMC 042), 32' S Tine field cultivator, ealking tandem axles, hydraulic gauge wheels. Notes: Item Location: Lake Village, AR 71653 Equipment Sold "AS IS, WHERE IS": All equipment/property is sold "AS IS, WHERE IS" with no warranty or guarantees, expressed or implied, No operational assessments or testing have been made by Del Peterson on this item, it has been photographed ONLY.



#84 - Backhoe Attachment (DR074)

Backhoe Attachment (DR074), hydraulic backhoe attachment, double outriggers, 24" ditch bucket. Notes: Item Location: Lake Village, AR 71653 Equipment Sold "AS IS, WHERE IS": All equipment/property is sold "AS IS, WHERE IS" with no warranty or guarantees, expressed or implied, No operational assessments or testing have been made by Del Peterson on this item, it has been photographed ONLY.



#85 - John Deere 8110T (RMC033)

John Deere 8110T (RMC033), John Deere diesel engine, Powershift transmission, full set front weights & bracket, rear PTO, 3 hydraulic outlets, rear 3 point & John Deere quick hitch, cab heat/air conditioning, AM/FM radio, shows 9332 hours. Notes: Item Location: Lake Village, AR 71653 Equipment Sold "AS IS, WHERE IS": All equipment/property is sold "AS IS, WHERE IS" with no warranty or guarantees, expressed or implied, No operational assessments or testing have been made by Del Peterson on this item, it has been photographed ONLY.



#86 - 1997 Cat Challenger 55 (RMC 021)

1997 Cat Challenger 55 (RMC 021), Cat diesel engine, Powershift transmission, front suitcase weights, rear PTO & 3 point hitch, quick hitch, 4 hydraulic outlets, cab heat/air conditioning, shows 455 hours, (dash was replaced in 2016 w/7400 hours on meter). Notes: Item Location: Lake Village, AR 71653 Equipment Sold "AS IS, WHERE IS": All equipment/property is sold "AS IS, WHERE IS" with no warranty or guarantees, expressed or implied, No operational assessments or testing have been made by Del Peterson on this item, it has been photographed ONLY.



#87 - Hydraulic Blade (RMC 038)

Hydraulic Blade (RMC 038), 10' hydraulic blade, 3 point mount, hydraulic tilt. Notes: Item Location: Lake Village, AR 71653 Equipment Sold "AS IS, WHERE IS": All equipment/property is sold "AS IS, WHERE IS" with no warranty or guarantees, expressed or implied, No operational assessments or testing have been made by Del Peterson on this item, it has been photographed ONLY.



#88 - Rome Tandem Disc (RMC 037)

Rome Tandem Disc (RMC 037), 36' tandem disc, oil fill bearings, hydraulic wings, 12.5L-15 tires. Notes: Item Location: Lake Village, AR 71653 Equipment Sold "AS IS, WHERE IS": All equipment/property is sold "AS IS, WHERE IS" with no warranty or guarantees, expressed or implied, No operational assessments or testing have been made by Del Peterson on this item, it has been photographed ONLY.



#89 - 2105 McFarlane Harrow (RMC 069)

2105 McFarlane Harrow (RMC 069), 50' 8 section 16 bar harrow, 11L-15 tires, hydraulic lift. Notes: Item Location: Lake Village, AR 71653 Equipment Sold "AS IS, WHERE IS": All equipment/property is sold "AS IS, WHERE IS" with no warranty or guarantees, expressed or implied, No operational assessments or testing have been made by Del Peterson on this item, it has been photographed ONLY.



#90 - Ripper (RMC 022)

Ripper (RMC 022), 16' 7 shank ripper, 3 point mount. Notes: Item Location: Lake Village, AR 71653 Equipment Sold "AS IS, WHERE IS": All equipment/property is sold "AS IS, WHERE IS" with no warranty or guarantees, expressed or implied, No operational assessments or testing have been made by Del Peterson on this item, it has been photographed ONLY.



#91 - Field Chisel (RMC 023)

Field Chisel (RMC 023), 30' hydraulic fold chisel, NEW shovels. Notes: Item Location: Lake Village, AR 71653 Equipment Sold "AS IS, WHERE IS": All equipment/property is sold "AS IS, WHERE IS" with no warranty or guarantees, expressed or implied, No operational assessments or testing have been made by Del Peterson on this item, it has been photographed ONLY.



#92 - John Deere 985 Field Cultivator (RMC 026)

John Deere 985 Field Cultivator (RMC 026), 56' hydraulic folding field cultivator, walking tandem axles, hydraulic gauge wheels, rear harrow. Notes: Item Location: Lake Village, AR 71653 Equipment Sold "AS IS, WHERE IS": All equipment/property is sold "AS IS, WHERE IS" with no warranty or guarantees, expressed or implied, No operational assessments or testing have been made by Del Peterson on this item, it has been photographed ONLY.



#93 - W & A Land Leveler (RMC 027)

W & A Land Leveler (RMC 027), 40' hydraulic fold leveler, front buster gangs, rear hanging harrow, new bearings. Notes: Item Location: Lake Village, AR 71653 Equipment Sold "AS IS, WHERE IS": All equipment/property is sold "AS IS, WHERE IS" with no warranty or guarantees, expressed or implied, No operational assessments or testing have been made by Del Peterson on this item, it has been photographed ONLY.



#94 - NEW Hitch Doc Fuel Trailer

NEW Hitch Doc Fuel Trailer, NEW NEVER USED, model HFC750, tandem axle, 750 gallon fuel tank, nose storage compartment, 10 gauge double seam welded, tank is independent from chassis & can be removed, 2 full length baffles, 2" anti-slosh tank filler cap & vent, cap vents @ 2.5 PSI, 1 1/2" drain plug, electric brakes w/breakaway system & safety chains, liquid-two component pain & primer, 25 GPM 12 volt fuel pump, 1" x 35' retractable hose & reel, auto shut off nozzle, 10 Micron filter, 7000 lb square lift jack, dual torsion axles 3500lb, DOT approved lights, 2 5/16 ball hitch, top mounted fuel gauge, rock guard kit w/ diamond plate on fenders, 235/80R16 tires, bolt on fenders. Notes: Item Location: Fremont, NE 68025 Equipment Sold "AS IS, WHERE IS": All equipment/property is sold "AS IS, WHERE IS" with no warranty or guarantees, expressed or implied, No operational assessments or testing have been made by Del Peterson on this item, it has been photographed ONLY.



#95 - Frontier GM1060E (DL125)

Frontier GM1060E (DL125) 3 point finish mower, 5' grooming, rear discharge, 540 PTO. Notes: Mower is approximately 2 years old. Item Location: Long Grove, IA 52756 Equipment Sold "AS IS, WHERE IS": All equipment/property is sold "AS IS, WHERE IS" with no warranty or guarantees, expressed or implied, No operational assessments or testing have been made by Del Peterson on this item, it has been photographed ONLY.



#96 - 2000 International 4900 Dry Tender Truck (AL158)

2000 International 4900 Dry Tender Truck (AL158), 530 motor, 10 speed Spicer transmission, Heat and AC, comes with PTO and 2 stage pump, Willmar 16 ton side discharge, 4 bin tender box, with tarp, tires are 90% tread, shows 497,000 miles. Notes: Both augers were replaced last year, truck runs great. Item Location: Adair, IL 61411 Equipment Sold "AS IS, WHERE IS": All equipment/property is sold "AS IS, WHERE IS" with no warranty or guarantees, expressed or implied, No operational assessments or testing have been made by Del Peterson on this item, it has been photographed ONLY.



#97 - Krause 12 Foot Disc(TC129)

Krause 12 Foot Disc(TC129) hydraulic, good tires, used every year, no breaks or welds, Notes: Can deliver up to 50 miles, will load. Item Location: Savanna, IL 61074 Equipment Sold "AS IS, WHERE IS": All equipment/property is sold "AS IS, WHERE IS" with no warranty or guarantees, expressed or implied, No operational assessments or testing have been made by Del Peterson on this item, it has been photographed ONLY.



#98 - John Deere 4960 MFWD (RMC 024)

John Deere 4960 MFWD (RMC 024), John Deere diesel engine, (was overhauled in 2014), cab heat/air conditioning, front suitcase weights and bracket, rear 3 point, rear PTO, 3 rear hydraulic outlets, 18.4R-46 rear tires & duals, 16.9R-30 front tires. Notes: One front tires has damage DOES hold air. Item Location: Lake Village, AR 71653 Equipment Sold "AS IS, WHERE IS": All equipment/property is sold "AS IS, WHERE IS" with no warranty or guarantees, expressed or implied, No operational assessments or testing have been made by Del Peterson on this item, it has been photographed ONLY.



#99 - 2001 John Deere 8410 MFWD (RMC 025)

2001 John Deere 8410 MFWD (RMC 025), John Deere diesel engine, Powershift transmission, rear PTO & 3 point hitch, cab heat/air conditioning, 300 gallon front mount poly liquid tank, 3 hydraulic outlets, 480/80R46 rear tires & duals, shows 9254 hours. Notes: Tractor DOES RUN, BUT needs OVERHAULED as fan belt broke and engine got very hot. Item Location: Lake Village, AR 71653 Equipment Sold "AS IS, WHERE IS": All equipment/property is sold "AS IS, WHERE IS" with no warranty or guarantees, expressed or implied, No operational assessments or testing have been made by Del Peterson on this item, it has been photographed ONLY.



#100 - Field Chisel (RMC 028)

Field Chisel (RMC 028), 3 point mounted chisle plow. Notes: Item Location: Lake Village, AR 71653 Equipment Sold "AS IS, WHERE IS": All equipment/property is sold "AS IS, WHERE IS" with no warranty or guarantees, expressed or implied, No operational assessments or testing have been made by Del Peterson on this item, it has been photographed ONLY.



#101 - 2015 Brandt HR 46F Bed Roller (RMC 032)

2015 Brandt HR 46F Bed Roller (RMC 032), 50' 3 section bed roller, rear lift assist, front plows, hydraulic markers. Notes: Item Location: Lake Village, AR 71653 Equipment Sold "AS IS, WHERE IS": All equipment/property is sold "AS IS, WHERE IS" with no warranty or guarantees, expressed or implied, No operational assessments or testing have been made by Del Peterson on this item, it has been photographed ONLY.



#102 - 2016 Bed Maker (RMC 029)

2016 Bed Maker (RMC 029), 12-38 or 16-30 with extensions 3 section double disc, hydraulic folding bed maker, 3 point mount. Notes: Item Location: Lake Village, AR 71653 Equipment Sold "AS IS, WHERE IS": All equipment/property is sold "AS IS, WHERE IS" with no warranty or guarantees, expressed or implied, No operational assessments or testing have been made by Del Peterson on this item, it has been photographed ONLY.



#103 - John Deere 335 Disc (RMC 063)

John Deere 335 Disc (RMC 063), 35' tandem disc, hydraulic wings, walking tandem axles, hydraulic gauge wheels, FRONT right side gang is MISSING in picutres will BE FIXED. Notes: Item Location: Hamburg, AR 71646 Equipment Sold "AS IS, WHERE IS": All equipment/property is sold "AS IS, WHERE IS" with no warranty or guarantees, expressed or implied, No operational assessments or testing have been made by Del Peterson on this item, it has been photographed ONLY.



#104 - Rome Tandem Disc (RMC 066)

Rome Tandem Disc (RMC 066), 36' tandem disc, hydraulic wings, 12.5L-15 tires. Notes: Item Location: Hamburg, AR 71646 Equipment Sold "AS IS, WHERE IS": All equipment/property is sold "AS IS, WHERE IS" with no warranty or guarantees, expressed or implied, No operational assessments or testing have been made by Del Peterson on this item, it has been photographed ONLY.



#105 - Ripper (RMC 068)

Ripper (RMC 068), 7 shank V ripper, 3 point mount. Notes: Item Location: Hamburg, AR 71646 Equipment Sold "AS IS, WHERE IS": All equipment/property is sold "AS IS, WHERE IS" with no warranty or guarantees, expressed or implied, No operational assessments or testing have been made by Del Peterson on this item, it has been photographed ONLY.



#106 - John Deere Disc (RMC 061)

John Deere Disc (RMC 061), 21' hydraulic tandem disc, manual folding wings. Notes: Item Location: Hamburg, AR 71646 Equipment Sold "AS IS, WHERE IS": All equipment/property is sold "AS IS, WHERE IS" with no warranty or guarantees, expressed or implied, No operational assessments or testing have been made by Del Peterson on this item, it has been photographed ONLY.



#107 - Chisel Plow (RMC 067)

Chisel Plow (RMC 067), 30' pull type chisel plow, hydraulic folding wings, 2 NEW cylinders. Notes: Item Location: Hamburg, AR 71646 Equipment Sold "AS IS, WHERE IS": All equipment/property is sold "AS IS, WHERE IS" with no warranty or guarantees, expressed or implied, No operational assessments or testing have been made by Del Peterson on this item, it has been photographed ONLY.



#108 - 2002 John Deere 9520T (RMC 035)

2002 John Deere 9520T (RMC 035), John Deere diesel engine, Powershift transmission, cab heat/air conditioning, front suitcase weights and bracket, rear 3 point & PTO, 4 hydraulic outlets, Star fire 3000 globe, Green Star 3 monitor, AM/FM radio, buddy seat, shows 6039 hours. Notes: Last year the undercarriage was rebuilt and NEW tracks. Tractor had approximately \$80,000 in repairs to the tracks, carriage wheels, etc. Item Location: Lake Village, AR 71653 Equipment Sold "AS IS, WHERE IS": All equipment/property is sold "AS IS, WHERE IS" with no warranty or guarantees, expressed or implied, No operational assessments or testing have been made by Del Peterson on this item, it has been photographed ONLY.



#109 - John Deere 8400T (RMC 046)

John Deere 8400T (RMC 046), John Deere diesel engine, powershift transmission, front suitcase weights and bracket, rear PTO and 3 point, triple hydraulic outlets, cab heat/air conditioning, shows 8988 hours. Notes: The undercarriage on this tractor is SHOT, and needs tracks as well. Item Location: Lake Village, AR 71653 Equipment Sold "AS IS, WHERE IS": All equipment/property is sold "AS IS, WHERE IS" with no warranty or guarantees, expressed or implied, No operational assessments or testing have been made by Del Peterson on this item, it has been photographed ONLY.



#110 - Kinze 1040 Cart (RMC 050)

Kinze 1040 Cart (RMC 050), grain cart on tracks, PTO drive, roll over tarp, hydraulic drive and folding auger, front & rear sight glass. Notes: Buyer cannot pick this item up until AFTER JUNE 1, 2017. Item Location: Lake Village, AR 71653 Equipment Sold "AS IS, WHERE IS": All equipment/property is sold "AS IS, WHERE IS" with no warranty or guarantees, expressed or implied, No operational assessments or testing have been made by Del Peterson on this item, it has been photographed ONLY.



#111 - 2015 Westfield MK 130-71 (RMC 051)

2015 Westfield MK 130-71 (RMC 051), portable grain auger, hydraulic up/down, swing hopper. Notes: Buyer cannot pick this item up until AFTER JUNE 1, 2017. Item Location: Lake Village, AR 71653 Equipment Sold "AS IS, WHERE IS": All equipment/property is sold "AS IS, WHERE IS" with no warranty or guarantees, expressed or implied, No operational assessments or testing have been made by Del Peterson on this item, it has been photographed ONLY.



#112 - 2005 John Deere 925D (RMC043)

2005 John Deere 925D (RMC043), 25' draper head, hydraulic fore/aft. Notes: This lot includes head trailer. Item Location: Lake Village, AR 71653 Equipment Sold "AS IS, WHERE IS": All equipment/property is sold "AS IS, WHERE IS" with no warranty or guarantees, expressed or implied, No operational assessments or testing have been made by Del Peterson on this item, it has been photographed ONLY.



#113 - John Deere 854A (RMC 039)

John Deere 854A (RMC 039), row crop 8 row head, has 1- 454 side panel, head NEEDS work. Notes: Item Location: Lake Village, AR 71653 Equipment Sold "AS IS, WHERE IS": All equipment/property is sold "AS IS, WHERE IS" with no warranty or guarantees, expressed or implied, No operational assessments or testing have been made by Del Peterson on this item, it has been photographed ONLY.



#114 - John Deere 454A (RMC 040)

John Deere 454A (RMC 040), row crop header, 4 row head should be good working order. Notes: Item Location: Lake Village, AR 71653 Equipment Sold "AS IS, WHERE IS": All equipment/property is sold "AS IS, WHERE IS" with no warranty or guarantees, expressed or implied, No operational assessments or testing have been made by Del Peterson on this item, it has been photographed ONLY.



#115 - John Deere 920F Header (DR 6326)

John Deere 920F Header (DR 6326), platform header, hydraulic fore/aft. Notes: Item Location: Lake Village, AR 71653 Equipment Sold "AS IS, WHERE IS": All equipment/property is sold "AS IS, WHERE IS" with no warranty or guarantees, expressed or implied, No operational assessments or testing have been made by Del Peterson on this item, it has been photographed ONLY.



#116 - John Deere 854A Header (RMC 047)

John Deere 854A Header (RMC 047), row crop header needs work, 8 row. Notes: Item Location: Lake Village, AR 71653 Equipment Sold "AS IS, WHERE IS": All equipment/property is sold "AS IS, WHERE IS" with no warranty or guarantees, expressed or implied, No operational assessments or testing have been made by Del Peterson on this item, it has been photographed ONLY.



#117 - John Deere 454A (RMC 048)

John Deere 454A (RMC 048), row crop header, 4 row head. Notes: Item Location: Lake Village, AR 71653 Equipment Sold "AS IS, WHERE IS": All equipment/property is sold "AS IS, WHERE IS" with no warranty or guarantees, expressed or implied, No operational assessments or testing have been made by Del Peterson on this item, it has been photographed ONLY.



#118 - 1998 Cat 45 Cahllenger (RMC 064)

Cat 45 Challenger (RMC 064), Cat diesel engine, powershift transmission, cab heat/air conditioning, front suitcase weights and bracket, rear quick hitch and PTO, 4 remote hydraulic outlets, AM/FM cassette radio, shows 7400 hours. Notes: Item Location: Hamburg, AR 71646 Equipment Sold "AS IS, WHERE IS": All equipment/property is sold "AS IS, WHERE IS" with no warranty or guarantees, expressed or implied, No operational assessments or testing have been made by Del Peterson on this item, it has been photographed ONLY.



#119 - John Deere 8520T (RMC 065)

John Deere 8520T (RMC 065), John Deere diesel engine, powershift transmission, front suitcase weights and bracket, cab heat/airconditioning, Star fire 3000 globe, rear PTO and 3 point, quick hitch, 3 hydraulic outlets, buddy seat, AM/FM cassette radio, shows 7753 hours. Notes: Item Location: Hamburg, AR 71646 Equipment Sold "AS IS, WHERE IS": All equipment/property is sold "AS IS, WHERE IS" with no warranty or guarantees, expressed or implied, No operational assessments or testing have been made by Del Peterson on this item, it has been photographed ONLY.



#120 - John Deere 653A (RMC 049)

John Deere 653A (RMC 049), row crop header, 6 row head, NEEDS work. Notes: Item Location: Lake Village, AR 71653 Equipment Sold "AS IS, WHERE IS": All equipment/property is sold "AS IS, WHERE IS" with no warranty or guarantees, expressed or implied, No operational assessments or testing have been made by Del Peterson on this item, it has been photographed ONLY.



#121 - Saddle Tanks (RMC 053)

Saddle Tanks (RMC 053), 2-400 gallon poly saddle tanks, mount ign brackets came off New Holland T800 tractor. Notes: Item Location: Lake Village, AR 71653 Equipment Sold "AS IS, WHERE IS": All equipment/property is sold "AS IS, WHERE IS" with no warranty or guarantees, expressed or implied, No operational assessments or testing have been made by Del Peterson on this item, it has been photographed ONLY.



#122 - Poly Liquid Tank (RMC 060)

Poly Liquid Tank (RMC 060), 275 gallon poly liquid tank. Notes: Item Location: Lake Village, AR 71653 Equipment Sold "AS IS, WHERE IS": All equipment/property is sold "AS IS, WHERE IS" with no warranty or guarantees, expressed or implied, No operational assessments or testing have been made by Del Peterson on this item, it has been photographed ONLY.



#123 - Woods BW1800 (RMC052)

Woods BW1800 (RMC052), 3 section hydraulic batwing mower, PTO drive, dual wheel axles. Notes: Item Location: Lake Village, AR 71653 Equipment Sold "AS IS, WHERE IS": All equipment/property is sold "AS IS, WHERE IS" with no warranty or guarantees, expressed or implied, No operational assessments or testing have been made by Del Peterson on this item, it has been photographed ONLY.



#124 - Woods BW2400 (RMC 020)

Woods BW2400 (RMC 020), 3 section hydraulic batwing mower, PTO drive, WILL have dual wheels, were removed for wet ground. Notes: Left side PTO shaft WILL be included. Item Location: Lake Village, AR 71653 Equipment Sold "AS IS, WHERE IS": All equipment/property is sold "AS IS, WHERE IS" with no warranty or guarantees, expressed or implied, No operational assessments or testing have been made by Del Peterson on this item, it has been photographed ONLY.



#125 - Woods (RMC 094)

Woods (RMC 094), model BW1800 3 section hydraulic fold batwing mower. Notes: PTO shaft is not seen in pictures BUT IS INCLUDED. Item Location: Arcola, MS 38722 Equipment Sold "AS IS, WHERE IS": All equipment/property is sold "AS IS, WHERE IS" with no warranty or guarantees, expressed or implied, No operational assessments or testing have been made by Del Peterson on this item, it has been photographed ONLY.



#126 - Kinze 2100 (RMC 045)

Kinze 2100 (RMC 045), 12 row planter, 3 point mounted, hydraulic markers, rear press wheels, ground drive wheel. Notes: Item Location: Lake Village, AR 71653 Equipment Sold "AS IS, WHERE IS": All equipment/property is sold "AS IS, WHERE IS" with no warranty or guarantees, expressed or implied, No operational assessments or testing have been made by Del Peterson on this item, it has been photographed ONLY.



#127 - J&M Seed Tender (RMC 093)

J&M Seed Tender (RMC 093), model 335ST, triple axle gear, swing conveyor, self contained hydraulics, Honda gas engine w/electric start, remote controlled, digital scale, work light package. Notes: Item Location: Arcola, MS 38722 Equipment Sold "AS IS, WHERE IS": All equipment/property is sold "AS IS, WHERE IS" with no warranty or guarantees, expressed or implied, No operational assessments or testing have been made by Del Peterson on this item, it has been photographed ONLY.



#128 - Combine Duals (RMC 055)

Combine Duals (RMC 055), 2-30.5L-32 tires and rims. Notes: Item Location: Lake Village, AR 71653 Equipment Sold "AS IS, WHERE IS": All equipment/property is sold "AS IS, WHERE IS" with no warranty or guarantees, expressed or implied, No operational assessments or testing have been made by Del Peterson on this item, it has been photographed ONLY.



#129 - Combine Duals (RMC 058)

Combine Duals (RMC 058), (2) 23.1-30 tires and rims. Notes: Item Location: Lake Village, AR 71653 Equipment Sold "AS IS, WHERE IS": All equipment/property is sold "AS IS, WHERE IS" with no warranty or guarantees, expressed or implied, No operational assessments or testing have been made by Del Peterson on this item, it has been photographed ONLY.



#130 - Combine Duals (RMC 057)

Combine Duals (RMC 057), (2) 23.1-30 tires and rims. Notes: Item Location: Lake Village, AR 71653 Equipment Sold "AS IS, WHERE IS": All equipment/property is sold "AS IS, WHERE IS" with no warranty or guarantees, expressed or implied, No operational assessments or testing have been made by Del Peterson on this item, it has been photographed ONLY.



#131 - Single Combine (RMC 059)

Single Combine (RMC 059), (1) 30.5L-32 combine tire and rim, came off White combine. Notes: Item Location: Lake Village, AR 71653 Equipment Sold "AS IS, WHERE IS": All equipment/property is sold "AS IS, WHERE IS" with no warranty or guarantees, expressed or implied, No operational assessments or testing have been made by Del Peterson on this item, it has been photographed ONLY.



#132 - 1986 Merritt Livestock Trailer (PZ6300)

1986 Merritt Livestock Trailer (PZ6300), 1986 Merritt livestock trailer, tandem axle, 11R24.5 tires. Notes: Item Location: Claremore, OK 74018 Equipment Sold "AS IS, WHERE IS": All equipment/property is sold "AS IS, WHERE IS" with no warranty or guarantees, expressed or implied, No operational assessments or testing have been made by Del Peterson on this item, it has been photographed ONLY.



#133 - Lowboy Trailer (PZ6299)

Lowboy Trailer (PZ6299), Tandem axle flatbed trailer, wood deck, beaver tail, fold down ramps, 122/118N14PR tires. Notes: THIS TRAILER DOES NOT AND WILL NOT HAVE A TITLE.. Please call seller for further information. Item Location: Claremore, OK 74018 Equipment Sold "AS IS, WHERE IS": All equipment/property is sold "AS IS, WHERE IS" with no warranty or guarantees, expressed or implied, No operational assessments or testing have been made by Del Peterson on this item, it has been photographed ONLY.



#134 - 2008 IHC WorkStar Petroleum Truck (PZ6301)

2008 IHC WorkStar Petroleum Truck (PZ6301), diesel engine, Allison automatic transmission, air conditioning, heat, Am/Fm CD stereo, single axle, Brownie 2100 gallon 5 compartment (600-500-400-300-300) petroleum body, hose reel, pump and meter, 11R22.5 front & rear tires, shows 151,276 miles, Unit# 120. Notes: Item Location: Claremore, OK 74018 Equipment Sold "AS IS, WHERE IS": All equipment/property is sold "AS IS, WHERE IS" with no warranty or guarantees, expressed or implied, No operational assessments or testing have been made by Del Peterson on this item, it has been photographed ONLY.



#135 - John Deere Tool Bar (PZ6304)

John Deere Tool Bar (PZ6304), John Deere 2510H high speed tool bar, 15 knives, hydraulic wings, double Raven super cooler, weights, rear hitch. Notes: Item Location: Danville, IL 61832 Equipment Sold "AS IS, WHERE IS": All equipment/property is sold "AS IS, WHERE IS" with no warranty or guarantees, expressed or implied, No operational assessments or testing have been made by Del Peterson on this item, it has been photographed ONLY.



#136 - Crushed Oyster Shell Flour(CG235)

Crushed Oyster Shell Flour(CG235), great for use in your garden or if you have a farm spread it on the field, use with your tomato planting to help eliminate blossom end rot(lack of calcium), average weight is 2000 pounds per tote give or take 500 lbs. Notes: Currently we have over 25 tons in totes of oyster shell flour (Ag Lime) for immediate pick up. Item Location: Newport, MN 55055 Equipment Sold "AS IS, WHERE IS": All equipment/property is sold "AS IS, WHERE IS" with no warranty or guarantees, expressed or implied, No operational assessments or testing have been made by Del Peterson on this item, it has been photographed ONLY.



#137 - Crushed Oyster Shell Flour(CG236)

Crushed Oyster Shell Flour(CG236), great for use in your garden or if you have a farm spread it on the field, use with your tomato planting to help eliminate blossom end rot(lack of calcium), average weight is 2000 pounds per tote give or take 500 lbs. Notes: Currently we have over 25 tons in totes of oyster shell flour (Ag Lime) for immediate pick up. Item Location: Newport, MN 55055 Equipment Sold "AS IS, WHERE IS": All equipment/property is sold "AS IS, WHERE IS" with no warranty or guarantees, expressed or implied, No operational assessments or testing have been made by Del Peterson on this item, it has been photographed ONLY.



#138 - Crushed Oyster Shell Flour(CG237)

Crushed Oyster Shell Flour(CG237), great for use in your garden or if you have a farm spread it on the field, use with your tomato planting to help eliminate blossom end rot(lack of calcium), average weight is 2000 pounds per tote give or take 500 lbs. Notes: Currently we have over 25 tons in totes of oyster shell flour (Ag Lime) for immediate pick up. Item Location: Newport, MN 55055 Equipment Sold "AS IS, WHERE IS": All equipment/property is sold "AS IS, WHERE IS" with no warranty or guarantees, expressed or implied, No operational assessments or testing have been made by Del Peterson on this item, it has been photographed ONLY.



#139 - Crushed Oyster Shell Flour(CG238)

Crushed Oyster Shell Flour(CG238), great for use in your garden or if you have a farm spread it on the field, use with your tomato planting to help eliminate blossom end rot(lack of calcium), average weight is 2000 pounds per tote give or take 500 lbs. Notes: Currently we have over 25 tons in totes of oyster shell flour (Ag Lime) for immediate pick up. Item Location: Newport, MN 55055 Equipment Sold "AS IS, WHERE IS": All equipment/property is sold "AS IS, WHERE IS" with no warranty or guarantees, expressed or implied, No operational assessments or testing have been made by Del Peterson on this item, it has been photographed ONLY.



#140 - Crushed Oyster Shell Flour(CG239)

Crushed Oyster Shell Flour(CG239), great for use in your garden or if you have a farm spread it on the field, use with your tomato planting to help eliminate blossom end rot(lack of calcium), average weight is 2000 pounds per tote give or take 500 lbs. Notes: Currently we have over 25 tons in totes of oyster shell flour (Ag Lime) for immediate pick up. Item Location: Newport, MN 55055 Equipment Sold "AS IS, WHERE IS": All equipment/property is sold "AS IS, WHERE IS" with no warranty or guarantees, expressed or implied, No operational assessments or testing have been made by Del Peterson on this item, it has been photographed ONLY.



#141 - Crushed Oyster Shell Flour(CG240)

Crushed Oyster Shell Flour(CG240), great for use in your garden or if you have a farm spread it on the field, use with your tomato planting to help eliminate blossom end rot(lack of calcium), average weight is 2000 pounds per tote give or take 500 lbs. Notes: Currently we have over 25 tons in totes of oyster shell flour (Ag Lime) for immediate pick up. Item Location: Newport, MN 55055 Equipment Sold "AS IS, WHERE IS": All equipment/property is sold "AS IS, WHERE IS" with no warranty or guarantees, expressed or implied, No operational assessments or testing have been made by Del Peterson on this item, it has been photographed ONLY.



#142 - Crushed Oyster Shell Flour(CG260)

Crushed Oyster Shell Flour(CG260), great for use in your garden or if you have a farm spread it on the field, use with your tomato planting to help eliminate blossom end rot(lack of calcium), average weight is 2000 pounds per tote give or take 500 lbs. Notes: Currently we have over 25 tons in totes of oyster shell flour (Ag Lime) for immediate pick up. Item Location: Newport, MN 55055 Equipment Sold "AS IS, WHERE IS": All equipment/property is sold "AS IS, WHERE IS" with no warranty or guarantees, expressed or implied, No operational assessments or testing have been made by Del Peterson on this item, it has been photographed ONLY.



#143 - Sweep Augers (DR6289)

Sweep Augers (DR6289), (2) sweep augers, 10' sweep w/1 hp electric motor, 12' sweep NO MOTOR. Notes: Item Location: Ponca, NE 68770 Equipment Sold "AS IS, WHERE IS": All equipment/property is sold "AS IS, WHERE IS" with no warranty or guarantees, expressed or implied, No operational assessments or testing have been made by Del Peterson on this item, it has been photographed ONLY.



#145 - 1996 CEI Pacer (DR6285)

1996 CEI Pacer (DR6285), 7 compartment aluminum hydraulic feed trailer, tandem axle. Notes: Item Location: Nerstrand, MN 55053 Equipment Sold "AS IS, WHERE IS": All equipment/property is sold "AS IS, WHERE IS" with no warranty or guarantees, expressed or implied, No operational assessments or testing have been made by Del Peterson on this item, it has been photographed ONLY.



#146 - Tenderfoot Flooring (DR6287)

Tenderfoot Flooring (DR6287), 10 pieces 5'X7' rubber coated tenderfoot flooring panels. Notes: Item Location: Ponca, NE 68770 Equipment Sold "AS IS, WHERE IS": All equipment/property is sold "AS IS, WHERE IS" with no warranty or guarantees, expressed or implied, No operational assessments or testing have been made by Del Peterson on this item, it has been photographed ONLY.



#147 - Danhuser (DR6288)

Danhuser (DR6288), hydraulic down pressure cylinder and bracket, includes 6" auger bit. Notes: Item Location: Ponca, NE 68770 Equipment Sold "AS IS, WHERE IS": All equipment/property is sold "AS IS, WHERE IS" with no warranty or guarantees, expressed or implied, No operational assessments or testing have been made by Del Peterson on this item, it has been photographed ONLY.



#148 - 2013 Burro Unit #8177 (DR6191)

2013 Burro Unit #8177 (DR6191), model B13-3K 3000lb walk behind forklift, 11hp gas engine, hydraulic drive. Notes: Item Location: Belcher, LA 71004 Equipment Sold "AS IS, WHERE IS": All equipment/property is sold "AS IS, WHERE IS" with no warranty or guarantees, expressed or implied, No operational assessments or testing have been made by Del Peterson on this item, it has been photographed ONLY.



#149 - 1991 Daco (DR6192)

1991 Daco (DR6192), stainless steel dry fertilizer tender trailer, self contained hydraulics, gas engine, DOES NOT RUN, NO REAR AUGER, tandem axle, roll over tarp, 22.5 tires, Budd wheels. Notes: Trailer is NOT ROAD WORTHY. Trailer will need hauled away. Trailer sold as SALVAGED TRAILER only. NO TITLE. Item Location: Eunice, LA 70535 Equipment Sold "AS IS, WHERE IS": All equipment/property is sold "AS IS, WHERE IS" with no warranty or guarantees, expressed or implied, No operational assessments or testing have been made by Del Peterson on this item, it has been photographed ONLY.



#150 - 2003 Miller 4WD Sprayer(CG171)

2003 Miller 4WD Sprayer(CG171), 5.9L Cummins, 1000 gallon poly tank with 50 gallon rinse tank and stainless steel boom lines, Raven LB 5 Smartbar Raven SCS 460 spray control, shows 3909 hours, Model# 2200TSS. Notes: Wires run for Trimble monitor but monitor is not included. Hydraulic pump has a small leak and a few hinge points need bushings, but everything operates as it should. Item Location: Waller, TX 77484 Equipment Sold "AS IS, WHERE IS": All equipment/property is sold "AS IS, WHERE IS" with no warranty or guarantees, expressed or implied, No operational assessments or testing have been made by Del Peterson on this item, it has been photographed ONLY.



#151 - 2006 Bigham Brothers Strip Tiller(CG172)

2006 Bigham Brothers Strip Tiller(CG172), 12 row 36" spacing with lengthened and reinforced lift assist, mount for John Blue fertilize pump on gauge wheel, stainless steel fertilize lines welded to shanks. Notes: Unit was used for 5 years on 700 acres of corn. Bearings turn free and all bushings and hinge points are tight. Item Location: Waller, TX 77484 Equipment Sold "AS IS, WHERE IS": All equipment/property is sold "AS IS, WHERE IS" with no warranty or guarantees, expressed or implied, No operational assessments or testing have been made by Del Peterson on this item, it has been photographed ONLY.



#152 - Crushed Oyster Shell Flour(CG241)

Crushed Oyster Shell Flour(CG241), great for use in your garden or if you have a farm spread it on the field, use with your tomato planting to help eliminate blossom end rot(lack of calcium), average weight is 2000 pounds per tote give or take 500 lbs. Notes: Currently we have over 25 tons in totes of oyster shell flour (Ag Lime) for immediate pick up. Item Location: Newport, MN 55055 Equipment Sold "AS IS, WHERE IS": All equipment/property is sold "AS IS, WHERE IS" with no warranty or guarantees, expressed or implied, No operational assessments or testing have been made by Del Peterson on this item, it has been photographed ONLY.



#153 - Crushed Oyster Shell Flour(CG242)

Crushed Oyster Shell Flour(CG242), great for use in your garden or if you have a farm spread it on the field, use with your tomato planting to help eliminate blossom end rot(lack of calcium), average weight is 2000 pounds per tote give or take 500 lbs. Notes: Currently we have over 25 tons in totes of oyster shell flour (Ag Lime) for immediate pick up. Item Location: Newport, MN 55055 Equipment Sold "AS IS, WHERE IS": All equipment/property is sold "AS IS, WHERE IS" with no warranty or guarantees, expressed or implied, No operational assessments or testing have been made by Del Peterson on this item, it has been photographed ONLY.



#154 - Crushed Oyster Shell Flour(CG243)

Crushed Oyster Shell Flour(CG243), great for use in your garden or if you have a farm spread it on the field, use with your tomato planting to help eliminate blossom end rot(lack of calcium), average weight is 2000 pounds per tote give or take 500 lbs. Notes: Currently we have over 25 tons in totes of oyster shell flour (Ag Lime) for immediate pick up. Item Location: Newport, MN 55055 Equipment Sold "AS IS, WHERE IS": All equipment/property is sold "AS IS, WHERE IS" with no warranty or guarantees, expressed or implied, No operational assessments or testing have been made by Del Peterson on this item, it has been photographed ONLY.



#155 - Crushed Oyster Shell Flour(CG244)

Crushed Oyster Shell Flour(CG244), great for use in your garden or if you have a farm spread it on the field, use with your tomato planting to help eliminate blossom end rot(lack of calcium), average weight is 2000 pounds per tote give or take 500 lbs. Notes: Currently we have over 25 tons in totes of oyster shell flour (Ag Lime) for immediate pick up. Item Location: Newport, MN 55055 Equipment Sold "AS IS, WHERE IS": All equipment/property is sold "AS IS, WHERE IS" with no warranty or guarantees, expressed or implied, No operational assessments or testing have been made by Del Peterson on this item, it has been photographed ONLY.



#156 - Crushed Oyster Shell Flour(CG245)

Crushed Oyster Shell Flour(CG245), great for use in your garden or if you have a farm spread it on the field, use with your tomato planting to help eliminate blossom end rot(lack of calcium), average weight is 2000 pounds per tote give or take 500 lbs. Notes: Currently we have over 25 tons in totes of oyster shell flour (Ag Lime) for immediate pick up. Item Location: Newport, MN 55055 Equipment Sold "AS IS, WHERE IS": All equipment/property is sold "AS IS, WHERE IS" with no warranty or guarantees, expressed or implied, No operational assessments or testing have been made by Del Peterson on this item, it has been photographed ONLY.



#157 - Crushed Oyster Shell Flour(CG246)

Crushed Oyster Shell Flour(CG246), great for use in your garden or if you have a farm spread it on the field, use with your tomato planting to help eliminate blossom end rot(lack of calcium), average weight is 2000 pounds per tote give or take 500 lbs. Notes: Currently we have over 25 tons in totes of oyster shell flour (Ag Lime) for immediate pick up. Item Location: Newport, MN 55055 Equipment Sold "AS IS, WHERE IS": All equipment/property is sold "AS IS, WHERE IS" with no warranty or guarantees, expressed or implied, No operational assessments or testing have been made by Del Peterson on this item, it has been photographed ONLY.



#158 - 1984 Coachmen Camper(CG170)

1984 Coachmen Camper(CG170), 40', no known leaks, everything works, has spot in it for washer/dryer combo, toaster, newer microwave, fridge/freezer, stove/oven, rollout awning. Notes: Item Location: Sioux City, IA 51106 Equipment Sold "AS IS, WHERE IS": All equipment/property is sold "AS IS, WHERE IS" with no warranty or guarantees, expressed or implied, No operational assessments or testing have been made by Del Peterson on this item, it has been photographed ONLY.



#159 - 1998 Mitsubishi FGC25 W/ Rotating Forks (KMK253)

1998 Mitsubishi FGC25 W/ Rotating Forks (KMK253) cps unit # 93239, LP gas engine, rotating forks, shows 8003 hours. Notes: Item Location: Mapleton, ND 58059 Equipment Sold "AS IS, WHERE IS": All equipment/property is sold "AS IS, WHERE IS" with no warranty or guarantees, expressed or implied, No operational assessments or testing have been made by Del Peterson on this item, it has been photographed ONLY.



#160 - Mueller 200 Gallon Stainless Steel Tank (KMK169)

Mueller 200 Gallon Stainless Steel Tank (KMK169) 200 gal., tri clamp, no valve, heating or cooling coils under tank leak a little, tank does not leak. Notes: Being resold due to lack of buyer performance. Item Location: Storm Lake, IA 50588 Equipment Sold "AS IS, WHERE IS": All equipment/property is sold "AS IS, WHERE IS" with no warranty or guarantees, expressed or implied, No operational assessments or testing have been made by Del Peterson on this item, it has been photographed ONLY.



#161 - 2004 John Deere 7920 Tractor (EG214)

2004 John Deere 7920 Tractor (EG214), Infinitely Variable Transmission, front suspension, 31 mph road speed, front brakes, air compressor, ActiveSeat, John Deere integrated steering valve for auto steer, owner has baled with it and run field cultivator, purchased in 2012 with 3200 hours, now has just under 5000 hours, currently using on the field cultivator so hours will increase slightly, 2600 monitor is NOT INCLUDED. Notes: 2600 Monitor is NOT INCLUDED. Item Location: Northwood, IA 50459 Equipment Sold "AS IS, WHERE IS": All equipment/property is sold "AS IS, WHERE IS" with no warranty or guarantees, expressed or implied, No operational assessments or testing have been made by Del Peterson on this item, it has been photographed ONLY.



#162 - 2008 International 7600 (TH143)

2008 International 7600 (TH143), Allison automatic transmission with 2 line wet kit, ISM Cummins at 410 hp, 14,600 front axle, air ride tandems on the rear, power divider, air slide fifth wheel, air ride cab, 302,000 miles, 11,700 hours, new fan clutch, aluminum outside wheels, virgin rear rubber at 90%. Notes: Recent ECM update for emissions that all work as they should. Southern truck, no rust. Runs great! Owner purchased 1 year ago to stretch the frame and put a garbage body on it. But ended up changing plans, and has used it to pull a live bottom trailer and haul grain. Runs great. Just put it in drive and go! Does have a rock chip in the windshield. Item Location: Ida Grove, IA 51445 Equipment Sold "AS IS, WHERE IS": All equipment/property is sold "AS IS, WHERE IS" with no warranty or guarantees, expressed or implied, No operational assessments or testing have been made by Del Peterson on this item, it has been photographed ONLY.



#163 - 1979 Jetco RT600 Tile Machine (PZ6295)

1979 Jetco RT600 Tile Machine (PZ6295), John Deere 6619 turbo charged diesel engine, 6 wheel drive, cuts 8' deep, setup for 12" tile, wired for Trimble GPS, wheel-port industries replacement parts, shows 1621 hours, S/N 103, MFG Code: 928771721. Notes: Entire digging frame rebuilt (50 hours on rebuild), all hydraulics gone through in the last 2 years. Item Location: Cerro Gordo, IL 61818 Equipment Sold "AS IS, WHERE IS": All equipment/property is sold "AS IS, WHERE IS" with no warranty or guarantees, expressed or implied, No operational assessments or testing have been made by Del Peterson on this item, it has been photographed ONLY.



#164 - 2000 Pup Trailer (PZ6296)

2000 Pup Trailer (PZ6296), 2000 triple axle pup trailer, 14' aluminum box, air ride suspension, aluminum rims. Notes: Item Location: Bussey, IA 50044 Equipment Sold "AS IS, WHERE IS": All equipment/property is sold "AS IS, WHERE IS" with no warranty or guarantees, expressed or implied, No operational assessments or testing have been made by Del Peterson on this item, it has been photographed ONLY.



#165 - 1972 Chevy C10, (DR6291)

1972 Chevy C10, (DR6291), C-10, 350 gas engine automatic transmission, regular cab, bed floor has been replaced, power steering pump leaks. Notes: Pickup will starts, runs and drives but carburetor needs tune up. Item Location: Ponca, NE 68770 Equipment Sold "AS IS, WHERE IS": All equipment/property is sold "AS IS, WHERE IS" with no warranty or guarantees, expressed or implied, No operational assessments or testing have been made by Del Peterson on this item, it has been photographed ONLY.



#166 - 2014 Mid State Tank (PZ6297)

2014 Mid State Tank (PZ6297), 2014 Mid State Tank 1800 gallon stainless steel liquid nurse tank, 304 stainless steel, Notes: Tank has never had liquid in it, tank is still on the pallet from the manufacturer, tank has some scratches on it. Item Location: Clinton, IL 61727 Equipment Sold "AS IS, WHERE IS": All equipment/property is sold "AS IS, WHERE IS" with no warranty or guarantees, expressed or implied, No operational assessments or testing have been made by Del Peterson on this item, it has been photographed ONLY.



#167 - New Leader MultiApplier Insert (NP4351)

New Leader MultiApplier Insert (NP4351), Model MultiApplier-5, stainless steel. Notes: Item Location: Cozad, NE 69130 Equipment Sold "AS IS, WHERE IS": All equipment/property is sold "AS IS, WHERE IS" with no warranty or guarantees, expressed or implied, No operational assessments or testing have been made by Del Peterson on this item, it has been photographed ONLY.



#169 - 2008 Dodge 1500 SLT Pickup (PZ6298)

2008 Dodge 1500 SLT Pickup (PZ6298), 4.7 V8 gas engine, automatic transmission, air conditioning, heat, Am/Fm CD stereo, power windows & locks, bucket seats with console, good tires, shows 176,166 miles, Unit# 00086. Notes: New ball joints, good running pickup. PLEASE ALLOW AT LEAST 60 DAYS FOR TITLE TRANSFER. Item Location: Gladstone, IL 61437 Equipment Sold "AS IS, WHERE IS": All equipment/property is sold "AS IS, WHERE IS" with no warranty or guarantees, expressed or implied, No operational assessments or testing have been made by Del Peterson on this item, it has been photographed ONLY.



#170 - Crushed Oyster Shell Flour(CG247)

Crushed Oyster Shell Flour(CG247), great for use in your garden or if you have a farm spread it on the field, use with your tomato planting to help eliminate blossom end rot(lack of calcium), average weight is 2000 pounds per tote give or take 500 lbs. Notes: Currently we have over 25 tons in totes of oyster shell flour (Ag Lime) for immediate pick up. Item Location: Newport, MN 55055 Equipment Sold "AS IS, WHERE IS": All equipment/property is sold "AS IS, WHERE IS" with no warranty or guarantees, expressed or implied, No operational assessments or testing have been made by Del Peterson on this item, it has been photographed ONLY.



#171 - Crushed Oyster Shell Flour(CG248)

Crushed Oyster Shell Flour(CG248), great for use in your garden or if you have a farm spread it on the field, use with your tomato planting to help eliminate blossom end rot(lack of calcium), average weight is 2000 pounds per tote give or take 500 lbs. Notes: Currently we have over 25 tons in totes of oyster shell flour (Ag Lime) for immediate pick up. Item Location: Newport, MN 55055 Equipment Sold "AS IS, WHERE IS": All equipment/property is sold "AS IS, WHERE IS" with no warranty or guarantees, expressed or implied, No operational assessments or testing have been made by Del Peterson on this item, it has been photographed ONLY.



#172 - Crushed Oyster Shell Flour(CG249)

Crushed Oyster Shell Flour(CG249), great for use in your garden or if you have a farm spread it on the field, use with your tomato planting to help eliminate blossom end rot(lack of calcium), average weight is 2000 pounds per tote give or take 500 lbs. Notes: Currently we have over 25 tons in totes of oyster shell flour (Ag Lime) for immediate pick up. Item Location: Newport, MN 55055 Equipment Sold "AS IS, WHERE IS": All equipment/property is sold "AS IS, WHERE IS" with no warranty or guarantees, expressed or implied, No operational assessments or testing have been made by Del Peterson on this item, it has been photographed ONLY.



#173 - Crushed Oyster Shell Flour(CG250)

Crushed Oyster Shell Flour(CG250), great for use in your garden or if you have a farm spread it on the field, use with your tomato planting to help eliminate blossom end rot(lack of calcium), average weight is 2000 pounds per tote give or take 500 lbs. Notes: Currently we have over 25 tons in totes of oyster shell flour (Ag Lime) for immediate pick up. Item Location: Newport, MN 55055 Equipment Sold "AS IS, WHERE IS": All equipment/property is sold "AS IS, WHERE IS" with no warranty or guarantees, expressed or implied, No operational assessments or testing have been made by Del Peterson on this item, it has been photographed ONLY.



#174 - Crushed Oyster Shell Flour(CG251)

Crushed Oyster Shell Flour(CG251), great for use in your garden or if you have a farm spread it on the field, use with your tomato planting to help eliminate blossom end rot(lack of calcium), average weight is 2000 pounds per tote give or take 500 lbs. Notes: Currently we have over 25 tons in totes of oyster shell flour (Ag Lime) for immediate pick up. Item Location: Newport, MN 55055 Equipment Sold "AS IS, WHERE IS": All equipment/property is sold "AS IS, WHERE IS" with no warranty or guarantees, expressed or implied, No operational assessments or testing have been made by Del Peterson on this item, it has been photographed ONLY.



#175 - Crushed Oyster Shell Flour(CG252)

Crushed Oyster Shell Flour(CG252), great for use in your garden or if you have a farm spread it on the field, use with your tomato planting to help eliminate blossom end rot(lack of calcium), average weight is 2000 pounds per tote give or take 500 lbs. Notes: Currently we have over 25 tons in totes of oyster shell flour (Ag Lime) for immediate pick up. Item Location: Newport, MN 55055 Equipment Sold "AS IS, WHERE IS": All equipment/property is sold "AS IS, WHERE IS" with no warranty or guarantees, expressed or implied, No operational assessments or testing have been made by Del Peterson on this item, it has been photographed ONLY.



#176 - 2005 Case IH SPX3185 Sprayer (EG215)

2005 Case IH SPX3185 Sprayer (EG215), 5.9 L Cummins motor, 60'/90' booms, 6 sections with fence row nozzle on left side, Raven 460 controller, Viper II monitor with AccuBoom in addition to the lightbar, 25% tread on tires, A/C, 750 gallon round poly tank, side inductor, foam marker, 5-way T-Jet nozzle bodies, 6700 total machine hours (hour meter replaced at 4400 hours). Notes: Sprayer has had a yearly inspections and all major repairs by Heartland AG out of Marshall, Missouri. All regular maintenance and oil changes by Service & Supply, this sprayer was cleaned and winterized last fall and has not been put in service this spring. Item Location: New Florence, MO 63363 Equipment Sold "AS IS, WHERE IS": All equipment/property is sold "AS IS, WHERE IS" with no warranty or guarantees, expressed or implied, No operational assessments or testing have been made by Del Peterson on this item, it has been photographed ONLY.



#177 - 2006 John Deere 9760 STS Combine(CG259)

2006 John Deere 9760 STS Combine(CG259), corn/bean, PRWD, duals, chopper, yield monitor, lateral tilt feeder house, contour master, HD variable speed feeder house, header height resume, sensing+float, Greenstar less mapping with display, touchset concave adjust, round bar concave, general purpose chaffer, 22.5ft (6.9M) perforated unload auger, chopper with chaff spreader, 20.8-42 R1 drive tires, power rear wheel drive 2 speed, 28L-26 10PR steering tires, dial-a-speed header control, Xeon high density lighting, one owner, good tires, always stored inside, fully serviced, shows 2346 hours, shows 1515 separator hours, John Deere controller. Notes: This machine is fully serviced and ready to work! Item Location: Browns, IL 62818 Equipment Sold "AS IS, WHERE IS": All equipment/property is sold "AS IS, WHERE IS" with no warranty or guarantees, expressed or implied, No operational assessments or testing have been made by Del Peterson on this item, it has been photographed ONLY.



#178 - John Deere 750C LGP Dozer (PD283)

John Deere 750C LGP Dozer (PD283), 28 inch wide tracks, 12 foot 6 inch 6 way blade, ac/heater fan, shows 9321 hours, 200 hours on new undercarriage, runs excellent and uses no oil. Notes: Item Location: Woodward, IA 50276 Equipment Sold "AS IS, WHERE IS": All equipment/property is sold "AS IS, WHERE IS" with no warranty or guarantees, expressed or implied, No operational assessments or testing have been made by Del Peterson on this item, it has been photographed ONLY.



#179 - 2006 Side Dump Trailer (PD135)

2006 Side Dump Trailer (PD135), tandem axle, can dump on either side of trailer, air ride suspension, air scale gauge on front of trailer, 40 ft length, 102 in wide, inside tub in excellent condition, brakes are good, tires are average, new dump cylinder installed in 2012, used daily. Notes: Item Location: Woodward, IA 50276 Equipment Sold "AS IS, WHERE IS": All equipment/property is sold "AS IS, WHERE IS" with no warranty or guarantees, expressed or implied, No operational assessments or testing have been made by Del Peterson on this item, it has been photographed ONLY.



#180 - 2016 New Leader 200 G4 MultApplier (KMK236)

2016 New Leader 200 G4 MultApplier (KMK236) NL200G4, MultApplier, 2016 model, 301462. Notes: New, never installed or used. Item Location: Madison, SD 57042 Equipment Sold "AS IS, WHERE IS": All equipment/property is sold "AS IS, WHERE IS" with no warranty or guarantees, expressed or implied, No operational assessments or testing have been made by Del Peterson on this item, it has been photographed ONLY.



#181 - 4400 John Deere Combine(TC124)

4400 John Deere Combine(TC124) 4 row, 30" corn head, diesel engine, air conditioning may not work, used last year, shows 29,603 hours. Notes: Item Location: Sleepy Eye, MN 56085 Equipment Sold "AS IS, WHERE IS": All equipment/property is sold "AS IS, WHERE IS" with no warranty or guarantees, expressed or implied, No operational assessments or testing have been made by Del Peterson on this item, it has been photographed ONLY.



#182 - 2 Row John Deere Planter(TC128)

2 Row John Deere Planter(TC128) 7000 series row units, ground drive, finger pick up. Notes: Item Location: Sleepy Eye, MN 56085 Equipment Sold "AS IS, WHERE IS": All equipment/property is sold "AS IS, WHERE IS" with no warranty or guarantees, expressed or implied, No operational assessments or testing have been made by Del Peterson on this item, it has been photographed ONLY.



#183 - John Deere 12' Disc(TC122)

John Deere 12' Disc(TC122) pull type, John Deere cylinder, 1 new tire. Notes: Item Location: Sleepy Eye, MN 56085 Equipment Sold "AS IS, WHERE IS": All equipment/property is sold "AS IS, WHERE IS" with no warranty or guarantees, expressed or implied, No operational assessments or testing have been made by Del Peterson on this item, it has been photographed ONLY.



#184 - 6' Frontier Digger(TC123)

6' Frontier Digger(TC123) Cat 1 3 point, very little use. Notes: Item Location: Sleepy Eye, MN 56085 Equipment Sold "AS IS, WHERE IS": All equipment/property is sold "AS IS, WHERE IS" with no warranty or guarantees, expressed or implied, No operational assessments or testing have been made by Del Peterson on this item, it has been photographed ONLY.



#185 - John Deere Crop Cultivator(TC125)

John Deere Crop Cultivator(TC125) 4 row, 30" row, was 4 row 38". Notes: Item Location: Sleepy Eye, MN 56085 Equipment Sold "AS IS, WHERE IS": All equipment/property is sold "AS IS, WHERE IS" with no warranty or guarantees, expressed or implied, No operational assessments or testing have been made by Del Peterson on this item, it has been photographed ONLY.



#186 - John Deere F 145 Plow(TC127)

John Deere F 145 Plow(TC127) 3 bottom plow, with coulters, hydraulic cylinder, good condition. Notes: Item Location: Sleepy Eye, MN 56085 Equipment Sold "AS IS, WHERE IS": All equipment/property is sold "AS IS, WHERE IS" with no warranty or guarantees, expressed or implied, No operational assessments or testing have been made by Del Peterson on this item, it has been photographed ONLY.



#187 - Crushed Oyster Shell Flour(CG253)

Crushed Oyster Shell Flour(CG253), great for use in your garden or if you have a farm spread it on the field, use with your tomato planting to help eliminate blossom end rot(lack of calcium), average weight is 2000 pounds per tote give or take 500 lbs. Notes: Currently we have over 25 tons in totes of oyster shell flour (Ag Lime) for immediate pick up. Item Location: Newport, MN 55055 Equipment Sold "AS IS, WHERE IS": All equipment/property is sold "AS IS, WHERE IS" with no warranty or guarantees, expressed or implied, No operational assessments or testing have been made by Del Peterson on this item, it has been photographed ONLY.



#188 - Crushed Oyster Shell Flour(CG254)

Crushed Oyster Shell Flour(CG254), great for use in your garden or if you have a farm spread it on the field, use with your tomato planting to help eliminate blossom end rot(lack of calcium), average weight is 2000 pounds per tote give or take 500 lbs. Notes: Currently we have over 25 tons in totes of oyster shell flour (Ag Lime) for immediate pick up. Item Location: Newport, MN 55055 Equipment Sold "AS IS, WHERE IS": All equipment/property is sold "AS IS, WHERE IS" with no warranty or guarantees, expressed or implied, No operational assessments or testing have been made by Del Peterson on this item, it has been photographed ONLY.



#189 - Crushed Oyster Shell Flour(CG255)

Crushed Oyster Shell Flour(CG255), great for use in your garden or if you have a farm spread it on the field, use with your tomato planting to help eliminate blossom end rot(lack of calcium), average weight is 2000 pounds per tote give or take 500 lbs. Notes: Currently we have over 25 tons in totes of oyster shell flour (Ag Lime) for immediate pick up. Item Location: Newport, MN 55055 Equipment Sold "AS IS, WHERE IS": All equipment/property is sold "AS IS, WHERE IS" with no warranty or guarantees, expressed or implied, No operational assessments or testing have been made by Del Peterson on this item, it has been photographed ONLY.



#190 - Crushed Oyster Shell Flour(CG256)

Crushed Oyster Shell Flour(CG256), great for use in your garden or if you have a farm spread it on the field, use with your tomato planting to help eliminate blossom end rot(lack of calcium), average weight is 2000 pounds per tote give or take 500 lbs. Notes: Currently we have over 25 tons in totes of oyster shell flour (Ag Lime) for immediate pick up. Item Location: Newport, MN 55055 Equipment Sold "AS IS, WHERE IS": All equipment/property is sold "AS IS, WHERE IS" with no warranty or guarantees, expressed or implied, No operational assessments or testing have been made by Del Peterson on this item, it has been photographed ONLY.



#191 - Crushed Oyster Shell Flour(CG257)

Crushed Oyster Shell Flour(CG257), great for use in your garden or if you have a farm spread it on the field, use with your tomato planting to help eliminate blossom end rot(lack of calcium), average weight is 2000 pounds per tote give or take 500 lbs. Notes: Currently we have over 25 tons in totes of oyster shell flour (Ag Lime) for immediate pick up. Item Location: Newport, MN 55055 Equipment Sold "AS IS, WHERE IS": All equipment/property is sold "AS IS, WHERE IS" with no warranty or guarantees, expressed or implied, No operational assessments or testing have been made by Del Peterson on this item, it has been photographed ONLY.



#192 - Crushed Oyster Shell Flour(CG258)

Crushed Oyster Shell Flour(CG258), great for use in your garden or if you have a farm spread it on the field, use with your tomato planting to help eliminate blossom end rot(lack of calcium), average weight is 2000 pounds per tote give or take 500 lbs. Notes: Currently we have over 25 tons in totes of oyster shell flour (Ag Lime) for immediate pick up. Item Location: Newport, MN 55055 Equipment Sold "AS IS, WHERE IS": All equipment/property is sold "AS IS, WHERE IS" with no warranty or guarantees, expressed or implied, No operational assessments or testing have been made by Del Peterson on this item, it has been photographed ONLY.



#193 - CWS Roll Out Bucket(TC126)

CWS Roll Out Bucket(TC126) Quick Tach hook up, was on a JD 624J, new cutting edge, good condition. Notes: Item Location: Sleepy Eye, MN 56085 Equipment Sold "AS IS, WHERE IS": All equipment/property is sold "AS IS, WHERE IS" with no warranty or guarantees, expressed or implied, No operational assessments or testing have been made by Del Peterson on this item, it has been photographed ONLY.



#194 - Snapper 60 Inch Zero Turn Mower (PD310)

Snapper 60 Inch Zero Turn Mower (PD310), 20 HP opposed twin Kohler, won't fire. Notes: Item Location: Jackson, MN 56143 Equipment Sold "AS IS, WHERE IS": All equipment/property is sold "AS IS, WHERE IS" with no warranty or guarantees, expressed or implied, No operational assessments or testing have been made by Del Peterson on this item, it has been photographed ONLY.



#195 - Bobcat 500 Skid Steer (PD309)

Bobcat 500 Skid Steer (PD309), 2233 original hours, good battery, new hydraulic lines all around, new bucket in 2016, 60% tire tread, 1000 pound lift capacity, good tires, smokes a little, runs and works good, ready to do your work. Notes: Magneto cap is wet and doesn't want to make good connection. Item Location: Jackson, MN 56143 Equipment Sold "AS IS, WHERE IS": All equipment/property is sold "AS IS, WHERE IS" with no warranty or guarantees, expressed or implied, No operational assessments or testing have been made by Del Peterson on this item, it has been photographed ONLY.



#196 - 40ft Screw Auger (DL128)

40ft Screw Auger (DL128) 16" x 40ft auger for conveyor. Notes: Item Location: Viroqua, WI 54665 Equipment Sold "AS IS, WHERE IS": All equipment/property is sold "AS IS, WHERE IS" with no warranty or guarantees, expressed or implied, No operational assessments or testing have been made by Del Peterson on this item, it has been photographed ONLY.



#197 - 150ft Down Spout Pipe (DL129)

150ft Down Spout Pipe (DL129) 12" x 150ft pipe, came off of grain leg. Notes: Item Location: Viroqua, WI 54665 Equipment Sold "AS IS, WHERE IS": All equipment/property is sold "AS IS, WHERE IS" with no warranty or guarantees, expressed or implied, No operational assessments or testing have been made by Del Peterson on this item, it has been photographed ONLY.



#198 - 2001 JD 567 Round Baler (CB002)

2001 JD 567 Round Baler (CB002), twine only, STD pickup, 1000 PTO, 33233 bales. Notes: Item Location: Gordon, NE 69343 Equipment Sold "AS IS, WHERE IS": All equipment/property is sold "AS IS, WHERE IS" with no warranty or guarantees, expressed or implied, No operational assessments or testing have been made by Del Peterson on this item, it has been photographed ONLY.



#199 - New Holland HS16 Head (CB005)

New Holland HS16 Head (CB005), 16' rubber conditioner, came off HW325 windrower. Notes: Item Location: Gordon, NE 69343 Equipment Sold "AS IS, WHERE IS": All equipment/property is sold "AS IS, WHERE IS" with no warranty or guarantees, expressed or implied, No operational assessments or testing have been made by Del Peterson on this item, it has been photographed ONLY.



#200 - 2006 New Holland 2355 Disc Header (CB003)

2006 New Holland 2355 Disc Header (CB003), rubber conditioner, 12 disc, 15'5" cut. Notes: Item Location: Gordon, NE 69343 Equipment Sold "AS IS, WHERE IS": All equipment/property is sold "AS IS, WHERE IS" with no warranty or guarantees, expressed or implied, No operational assessments or testing have been made by Del Peterson on this item, it has been photographed ONLY.



#201 - John Deere 220 20' Dummy Header (CB004)

John Deere 220 20' Dummy Header (CB004), with 2 - 9' sund pickups. Notes: Item Location: Gordon, NE 69343 Equipment Sold "AS IS, WHERE IS": All equipment/property is sold "AS IS, WHERE IS" with no warranty or guarantees, expressed or implied, No operational assessments or testing have been made by Del Peterson on this item, it has been photographed ONLY.



#202 - 2007 MACDON A-30-5 Pull Sickle Mower Conditioner (CB006)

2007 MACDON A-30-5 Pull Sickle Mower Conditioner (CB006), 1000 PTO, steel rolls, 16' header. Notes: Item Location: Gordon, NE 69343 Equipment Sold "AS IS, WHERE IS": All equipment/property is sold "AS IS, WHERE IS" with no warranty or guarantees, expressed or implied, No operational assessments or testing have been made by Del Peterson on this item, it has been photographed ONLY.



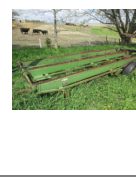
#203 - New Holland 1441 Wind Rower (DR6292)

New Holland 1441 Wind Rower (DR6292), model 1441 Discbine, PTO drive, implement tires, 3pt hook up, crimper. Notes: Item Location: Randolph, NE 68771 Equipment Sold "AS IS, WHERE IS": All equipment/property is sold "AS IS, WHERE IS" with no warranty or guarantees, expressed or implied, No operational assessments or testing have been made by Del Peterson on this item, it has been photographed ONLY.



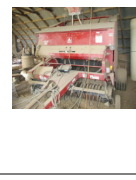
#204 - JD Bale Mover (DR6301)

JD Stack Mover (DR6301), JD stack mover, model 200, single stack, hydraulic, single axle. Notes: Item Location: Randolph, NE 68771 Equipment Sold "AS IS, WHERE IS": All equipment/property is sold "AS IS, WHERE IS" with no warranty or guarantees, expressed or implied, No operational assessments or testing have been made by Del Peterson on this item, it has been photographed ONLY.



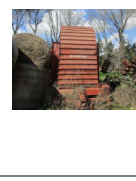
#205 - Agco 4865 Baler (DR6306)

Agco 4865 Baler (DR6306), model 4685 round baler, Gandy inoculator box, implement tires, monitor, all shields are INCLUDED. Notes: Item Location: Randolph, NE 68771 Equipment Sold "AS IS, WHERE IS": All equipment/property is sold "AS IS, WHERE IS" with no warranty or guarantees, expressed or implied, No operational assessments or testing have been made by Del Peterson on this item, it has been photographed ONLY.



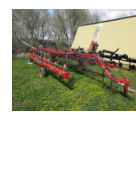
#206 - Hesston Stacker (DR6311)

Hesston Stacker (DR6311), Hesston stacker Stack Hand 30A, single axle, hydraulic, PTO. Notes: Item Location: Randolph, NE 68771 Equipment Sold "AS IS, WHERE IS": All equipment/property is sold "AS IS, WHERE IS" with no warranty or guarantees, expressed or implied, No operational assessments or testing have been made by Del Peterson on this item, it has been photographed ONLY.



#207 - Miller Pro Wheel Rake (DR6315)

Miller Pro Wheel Rake (DR6315), Model FWR12, 7x7 wheel rake, hydraulic. Notes: Item Location: Randolph, NE 68771 Equipment Sold "AS IS, WHERE IS": All equipment/property is sold "AS IS, WHERE IS" with no warranty or guarantees, expressed or implied, No operational assessments or testing have been made by Del Peterson on this item, it has been photographed ONLY.



#208 - JD 3960 Chopper (DR6320)

JD 3960 Chopper (DR6320), Model 3960 chopper, with 3 row corn head, Gandy box, spout included. Notes: Item Location: Randolph, NE 68771 Equipment Sold "AS IS, WHERE IS": All equipment/property is sold "AS IS, WHERE IS" with no warranty or guarantees, expressed or implied, No operational assessments or testing have been made by Del Peterson on this item, it has been photographed ONLY.



#209 - Buffalo Box Scraper (DR6300)

Buffalo Box Scraper (DR6300), pull type, hydraulic, 12' scraper. Notes: Item Location: Randolph, NE 68771 Equipment Sold "AS IS, WHERE IS": All equipment/property is sold "AS IS, WHERE IS" with no warranty or guarantees, expressed or implied, No operational assessments or testing have been made by Del Peterson on this item, it has been photographed ONLY.



#210 - Arts Way Box Scraper (DR6299)

Arts Way Scraper (DR6299), Arts Way LS1400, pull type 6 way hydraulic. Notes: Item Location: Randolph, NE 68771 Equipment Sold "AS IS, WHERE IS": All equipment/property is sold "AS IS, WHERE IS" with no warranty or guarantees, expressed or implied, No operational assessments or testing have been made by Del Peterson on this item, it has been photographed ONLY.



#211 - Simonsen Dry Spreader (DR6313)

Simonsen Dry Spreader (DR6313), ground drive, PTO, web chain, single spinner. Notes: Item Location: Randolph, NE 68771 Equipment Sold "AS IS, WHERE IS": All equipment/property is sold "AS IS, WHERE IS" with no warranty or guarantees, expressed or implied, No operational assessments or testing have been made by Del Peterson on this item, it has been photographed ONLY.



#212 - IHC Grass Seed Drill (DR2963)

IHC Grass Seed Drill (DR2963), IHC 11' grass seed drill, coulters, chain drive. Notes: Item Location: Randolph, NE 68771 Equipment Sold "AS IS, WHERE IS": All equipment/property is sold "AS IS, WHERE IS" with no warranty or guarantees, expressed or implied, No operational assessments or testing have been made by Del Peterson on this item, it has been photographed ONLY.



#213 - IHC Grass Seed Drill (DR6302)

IHC Grass Seed Drill (DR6302), IHC 11' grass seed drill, coulters, chain drive. Notes: Item Location: Randolph, NE 68771 Equipment Sold "AS IS, WHERE IS": All equipment/property is sold "AS IS, WHERE IS" with no warranty or guarantees, expressed or implied, No operational assessments or testing have been made by Del Peterson on this item, it has been photographed ONLY.



#214 - Post Hole Digger (DR6307)

Post Hole Digger (DR6307), 3 pt. post hole digger, 6" & 10" bits. Notes: Item Location: Randolph, NE 68771 Equipment Sold "AS IS, WHERE IS": All equipment/property is sold "AS IS, WHERE IS" with no warranty or guarantees, expressed or implied, No operational assessments or testing have been made by Del Peterson on this item, it has been photographed ONLY.



#215 - Gehl Feed Grinder (DR6303)

Gehl Feed Grinder (DR6303), Gehl model 125 Mix-All, 2.5 ton model 700 scale, PTO, foldable auger, implement tires. Notes: Item Location: Randolph, NE 68771 Equipment Sold "AS IS, WHERE IS": All equipment/property is sold "AS IS, WHERE IS" with no warranty or guarantees, expressed or implied, No operational assessments or testing have been made by Del Peterson on this item, it has been photographed ONLY.



#216 - Kelly Ryan Feeder Wagon (DR6308)

Kelly Ryan Feeder Wagon (DR6308), Kelly Ryan Feed-R-Wagon, approx. 5x12', scale included, single axle. Notes: Item Location: Randolph, NE 68771 Equipment Sold "AS IS, WHERE IS": All equipment/property is sold "AS IS, WHERE IS" with no warranty or guarantees, expressed or implied, No operational assessments or testing have been made by Del Peterson on this item, it has been photographed ONLY.



#217 - Bulk Bin (DR6304)

Bulk Bin (DR6304), 3 ton bulk bin, with stand. Notes: Item Location: Randolph, NE 68771 Equipment Sold "AS IS, WHERE IS": All equipment/property is sold "AS IS, WHERE IS" with no warranty or guarantees, expressed or implied, No operational assessments or testing have been made by Del Peterson on this item, it has been photographed ONLY.



#218 - Manure Pump, (DR6305)

Manure Pump, (DR6305), Rudolph Bauer, Model M-1000, PTO, hose included, Primer DOES NOT WORK. Notes: Item Location: Randolph, NE 68771 Equipment Sold "AS IS, WHERE IS": All equipment/property is sold "AS IS, WHERE IS" with no warranty or guarantees, expressed or implied, No operational assessments or testing have been made by Del Peterson on this item, it has been photographed ONLY.



#219 - Roorda Manure Spreader (DR6319)

Roorda Manure Spreader (DR6319), hydraulic single axle, slop gate. Notes: Item Location: Randolph, NE 68771 Equipment Sold "AS IS, WHERE IS": All equipment/property is sold "AS IS, WHERE IS" with no warranty or guarantees, expressed or implied, No operational assessments or testing have been made by Del Peterson on this item, it has been photographed ONLY.



#220 - Schwartz Silage Wagon (DR6294)

Schwartz Silage Wagon (DR6294), model 200, roof, wood end gate and side extensions, Westendorf running gear, hydraulic hoist, implement tires. Notes: Item Location: Randolph, NE 68771 Equipment Sold "AS IS, WHERE IS": All equipment/property is sold "AS IS, WHERE IS" with no warranty or guarantees, expressed or implied, No operational assessments or testing have been made by Del Peterson on this item, it has been photographed ONLY.



#221 - Silage wagon (DR6295)

Silage wagon (DR6295), steel silage box, roof, hydraulic hoist, Westendorf running gear, implement tires. Notes: Item Location: Randolph, NE 68771 Equipment Sold "AS IS, WHERE IS": All equipment/property is sold "AS IS, WHERE IS" with no warranty or guarantees, expressed or implied, No operational assessments or testing have been made by Del Peterson on this item, it has been photographed ONLY.



#222 - Dohrman Silage Wagon (DR6296)

Dohrman Silage Wagon (DR6296), 10 ton Westendorf Gear, hydraulic hoist, roof. Notes: Item Location: Randolph, NE 68771 Equipment Sold "AS IS, WHERE IS": All equipment/property is sold "AS IS, WHERE IS" with no warranty or guarantees, expressed or implied, No operational assessments or testing have been made by Del Peterson on this item, it has been photographed ONLY.



#223 - Bush Hog Silage Wagon (DR6297)

Bush Hog Silage Wagon (DR6297), wood end gate and side extensions, tin roof, on running gear, hydraulic hoist, also has steel end gate. Notes: Item Location: Randolph, NE 68771 Equipment Sold "AS IS, WHERE IS": All equipment/property is sold "AS IS, WHERE IS" with no warranty or guarantees, expressed or implied, No operational assessments or testing have been made by Del Peterson on this item, it has been photographed ONLY.



#224 - IHC Silage Blower (DR6317)

IHC Silage Blower (DR6317), Model 56, silage blower. Notes: Item Location: Randolph, NE 68771 Equipment Sold "AS IS, WHERE IS": All equipment/property is sold "AS IS, WHERE IS" with no warranty or guarantees, expressed or implied, No operational assessments or testing have been made by Del Peterson on this item, it has been photographed ONLY.



#225 - Gehl Silage Blower (DR6321)

Gehl Silage Blower (DR6321), Gehl model 99 HI-Throw silage blower. Notes: Item Location: Randolph, NE 68771 Equipment Sold "AS IS, WHERE IS": All equipment/property is sold "AS IS, WHERE IS" with no warranty or guarantees, expressed or implied, No operational assessments or testing have been made by Del Peterson on this item, it has been photographed ONLY.



#226 - Farmhand Silage Wagon (DR6322)

Farmhand Silage Wagon (DR6322), model F48B-3, tin roof, Westendorf running gear, implement tires, hydraulic, PTO, wood sides, feeding spout. Notes: Item Location: Randolph, NE 68771 Equipment Sold "AS IS, WHERE IS": All equipment/property is sold "AS IS, WHERE IS" with no warranty or guarantees, expressed or implied, No operational assessments or testing have been made by Del Peterson on this item, it has been photographed ONLY.



#227 - Farmhand Silage Wagon (DR6323)

Farmhand Silage Wagon (DR6323), model F48B-3, tin roof, running gear, implement tires, hydraulic, PTO, wood sides, feeding spout. Notes: Item Location: Randolph, NE 68771 Equipment Sold "AS IS, WHERE IS": All equipment/property is sold "AS IS, WHERE IS" with no warranty or guarantees, expressed or implied, No operational assessments or testing have been made by Del Peterson on this item, it has been photographed ONLY.



#228 - Farmhand Silage Wagon (DR6324)

Farmhand Silage Wagon (DR6324), model F48B-3, tin roof, running gear, implement tires, hydraulic, PTO, wood sides, feeding spout. Notes: Item Location: Randolph, NE 68771 Equipment Sold "AS IS, WHERE IS": All equipment/property is sold "AS IS, WHERE IS" with no warranty or guarantees, expressed or implied, No operational assessments or testing have been made by Del Peterson on this item, it has been photographed ONLY.



#229 - Lorenz 3 pt Snow Blower (DR6316)

Lorenz 3 pt Snow Blower (DR6316), Loren 8' snow blower, PTO, 2 stage, with hydraulic spout. Notes: Item Location: Randolph, NE 68771 Equipment Sold "AS IS, WHERE IS": All equipment/property is sold "AS IS, WHERE IS" with no warranty or guarantees, expressed or implied, No operational assessments or testing have been made by Del Peterson on this item, it has been photographed ONLY.



#230 - JD 310 Disk (DR6298)

JD 310 Disk (DR6298), model 310 disk, hydraulic, blade cleaners. Notes: Item Location: Randolph, NE 68771 Equipment Sold "AS IS, WHERE IS": All equipment/property is sold "AS IS, WHERE IS" with no warranty or guarantees, expressed or implied, No operational assessments or testing have been made by Del Peterson on this item, it has been photographed ONLY.



#231 - JD 230 Disk (DR6312)

JD 230 Disk (DR6312), model 230 disk, hydraulic, foldable wings, Harrow attachment. Notes: Item Location: Randolph, NE 68771 Equipment Sold "AS IS, WHERE IS": All equipment/property is sold "AS IS, WHERE IS" with no warranty or guarantees, expressed or implied, No operational assessments or testing have been made by Del Peterson on this item, it has been photographed ONLY.



#232 - JD Plow (DR6318)

JD Plow (DR6318), John Deere, Model A1045, 5 bottom plow, coulters. Notes: Item Location: Randolph, NE 68771 Equipment Sold "AS IS, WHERE IS": All equipment/property is sold "AS IS, WHERE IS" with no warranty or guarantees, expressed or implied, No operational assessments or testing have been made by Del Peterson on this item, it has been photographed ONLY.



#233 - Farmall 350 Tractor (DR6309)

Farmall 350 Tractor (DR6309), gas engine, 5 speed transmission, PTO, 11.2-38 rear tires, torque amplifier, wide front. Notes: Item Location: Randolph, NE 68771 Equipment Sold "AS IS, WHERE IS": All equipment/property is sold "AS IS, WHERE IS" with no warranty or guarantees, expressed or implied, No operational assessments or testing have been made by Del Peterson on this item, it has been photographed ONLY.



#235 - 1970 Ford F-250 (DR6310)

1970 Ford F-250 (DR6310), gas engine, 4 speed manual, radio, Heat, NONRUNNER. Notes: Item Location: Randolph, NE 68771 Equipment Sold "AS IS, WHERE IS": All equipment/property is sold "AS IS, WHERE IS" with no warranty or guarantees, expressed or implied, No operational assessments or testing have been made by Del Peterson on this item, it has been photographed ONLY.



#236 - Melroe Spra-Coupe 3630(CG230)

Melroe Spra-Coupe 3630(CG230), 60 foot hydraulic fold booms, Melroe monitor, Raven mapping system, turbo diesel, Bord-Warner T-5, manual transmission, shows 1071 hours. Notes: Booms work but will need some repair sometime. Item Location: Red Oak, IA 51566 Equipment Sold "AS IS, WHERE IS": All equipment/property is sold "AS IS, WHERE IS" with no warranty or guarantees, expressed or implied, No operational assessments or testing have been made by Del Peterson on this item, it has been photographed ONLY.



#237 - Schaben 6500 Sprayer(CG234)

Schaben 6500 Sprayer(CG234), 1000 gallon, 6500 series sprayer, 60 foot hydraulic booms, less than 500 acres on it, New Raven SCS 440 NVM spray controller, chemical inductor, rinse tank, fresh water tank, 12.4/38 tires. Notes: Item Location: Red Oak, IA 51566 Equipment Sold "AS IS, WHERE IS": All equipment/property is sold "AS IS, WHERE IS" with no warranty or guarantees, expressed or implied, No operational assessments or testing have been made by Del Peterson on this item, it has been photographed ONLY.



#238 - 1989 STE Trailer(CG229)

1989 STE Trailer(CG229), 3400 gallon stainless steel liquid trailer, STE, 316 SS MC307 tanker trailer. Notes: Item Location: Red Oak, IA 51566 Equipment Sold "AS IS, WHERE IS": All equipment/property is sold "AS IS, WHERE IS" with no warranty or guarantees, expressed or implied, No operational assessments or testing have been made by Del Peterson on this item, it has been photographed ONLY.



#239 - 1995 Brenner Trailer(CG232)

1995 Brenner Trailer(CG232), 7000 gallon, straight round insulated, stainless steel trailer, DOT 407 T316SS chemical tank trailer one compartment, 3 inch 55 plumbing with a 2 inch cast iron Banjo pump, Honda motor in a 55 cabinet. Set up and ready to go haul. Notes: Item Location: Red Oak, IA 51566 Equipment Sold "AS IS, WHERE IS": All equipment/property is sold "AS IS, WHERE IS" with no warranty or guarantees, expressed or implied, No operational assessments or testing have been made by Del Peterson on this item, it has been photographed ONLY.



#240 - 2011 Finish Line Trailer(CG233)

2011 Finish Line Trailer(CG233), 25 foot, 20000 lb trailer, 6-foot top deck above the gooseneck, 8 foot wide tandem axles, dual wheels, less than 500 miles on the trailer, 1300 gallon tank with 2 inch blue jet pump and Honda motor, holds 4 mini bulks in front of the tank, excellent condition. Notes: This was used to haul fertilizer and seed to a farm about 10 miles away. Item Location: Red Oak, IA 51566 Equipment Sold "AS IS, WHERE IS": All equipment/property is sold "AS IS, WHERE IS" with no warranty or guarantees, expressed or implied, No operational assessments or testing have been made by Del Peterson on this item, it has been photographed ONLY.



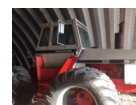
#241 - 1970 Michigan 85A Articulated Wheel Loader (PD145)

1970 Michigan 85A Articulated Wheel Loader (PD145), near new 23.5x25 16 ply tires, auxillary hydraulics, used to run snow blower before, new paint, new lights, engine and transmission have been overhauled, 4 yard bucket, 9 feet wide, farmer retired, service manuals and shop manuals included, engine S/N 6051523. Notes: Item Location: Coal Valley, IL 61240 Equipment Sold "AS IS, WHERE IS": All equipment/property is sold "AS IS, WHERE IS" with no warranty or guarantees, expressed or implied, No operational assessments or testing have been made by Del Peterson on this item, it has been photographed ONLY.



#242 - 1976 Case 2670 Articulated Tractor (PD199)

1976 Case 2670 Articulated Tractor (PD199), low hours of 3,600, used on baler, chopper, and manure spreader, has had very light field use, 18.4 x 34 duals, 3 new tires, 1000 RPM PTO, 3 point hitch, clean cab, parade ready paint job, parts and service manuals included. Notes: Item Location: Coal Valley, IL 61240 Equipment Sold "AS IS, WHERE IS": All equipment/property is sold "AS IS, WHERE IS" with no warranty or guarantees, expressed or implied, No operational assessments or testing have been made by Del Peterson on this item, it has been photographed ONLY.



#243 - Case IH 800 Planter (EG219)

Case IH 800 Planter (EG219), 12 row 30", insecticide boxes and row cleaners, corn drums only, IH Cyclomitor 111 monitor. Notes: Item Location: Bellingham, MN 56212 Equipment Sold "AS IS, WHERE IS": All equipment/property is sold "AS IS, WHERE IS" with no warranty or guarantees, expressed or implied, No operational assessments or testing have been made by Del Peterson on this item, it has been photographed ONLY.



#244 - 2002 Bobcat T200 (EG222)

2002 Bobcat T200 (EG222), 73 HP, 18" tracks, LED lights front and back, hydraulic pump and hydrostat rebuilt at about 5000 hours, 20 hours on engine, major overhaul including new turbo and oil pump, RH drive motor rebuilt at same time as engine, no A/C but heater works, windows are removed, they are available except door is missing, no bucket or attachments, shows 6396.2 hours. Notes: Item Location: Bellingham, MN 56212 Equipment Sold "AS IS, WHERE IS": All equipment/property is sold "AS IS, WHERE IS" with no warranty or guarantees, expressed or implied, No operational assessments or testing have been made by Del Peterson on this item, it has been photographed ONLY.



#245 - 2004 Ford F-350 Utility Truck (EG217)

2004 Ford F-350 Utility Truck (EG217), powerstroke diesel, automatic no rust, heat, A/C, radio, starts and runs good, approximately 275,000 miles. Notes: Still in use- miles will increase. Item Location: Charleston, IL 61920 Equipment Sold "AS IS, WHERE IS": All equipment/property is sold "AS IS, WHERE IS" with no warranty or guarantees, expressed or implied, No operational assessments or testing have been made by Del Peterson on this item, it has been photographed ONLY.



#246 - 2000 International 4000 Series Service Truck (EG218)

2000 International 4000 Series Service Truck (EG218), DT466, Allison automatic, PTO air compressor, pintle hitch and light plugs on rear, electric brake controller, work lights, enclosed part of bed has tool boxes, tools NOT INCLUDED, air hose reel in rear door of bed, runs and drives good, approximately 135,000 miles. Notes: Still in use- miles will increase. Tools NOT INCLUDED Item Location: Charleston, IL 61920 Equipment Sold "AS IS, WHERE IS": All equipment/property is sold "AS IS, WHERE IS" with no warranty or guarantees, expressed or implied, No operational assessments or testing have been made by Del Peterson on this item, it has been photographed ONLY.



#247 - 2012 Forest River Sandpiper (DR6270)

2012 Forest River Sandpiper (DR6270), model 365AQ, 41.5' 5th wheel camper, with bunk house, sleeps 11, 5 bunk beds, pull out couch, dual air conditioner units, 2 bathrooms, 2 sinks, full staqqnd up shower, king size master bebbroom, fold down bunk beds, full kitchen w/large refrigerator & gas oven/stove, full outside kitchen, outdoor refrigerator, outdoor sound system, living room and outdoor TV, underglow lighting, right side electric awning, has literally only been used 10-12 times. Notes: Comes with levelers, stabilizers, Camper is in excellent ready to use condition. Item Location: Orchard, NE 68764 Equipment Sold "AS IS, WHERE IS": All equipment/property is sold "AS IS, WHERE IS" with no warranty or guarantees, expressed or implied, No operational assessments or testing have been made by Del Peterson on this item, it has been photographed ONLY.



#248 - 2013 Chevy Silverado Unit #8726 (DR6327)

2013 Chevy Silverado Unit #8726 (DR6327), gas engine, automatic transmission, 4X4, crew cab, power windows & locks, rear receiver hitch, AM/FM CD radio, air conditioning, tcruise control, shows 169,133 miles. Notes: Engine needs a tune up and transmission needs serviced. Item Location: Crowley, LA 70526 Equipment Sold "AS IS, WHERE IS": All equipment/property is sold "AS IS, WHERE IS" with no warranty or guarantees, expressed or implied, No operational assessments or testing have been made by Del Peterson on this item, it has been photographed ONLY.



#249 - 2016 Chevrolet Malibu LTZ (PD314)

2016 Chevrolet Malibu LTZ (PD314), 41,836 miles, automatic, 6 speed w/ OD, 4 cylinder, 2.5 Liter, traction control, Stabilitrak, Anti-theft, keyless entry, keyless start, power door/windows, AM/FM Stereo, MP3, Sirius Satellite, Navigation System, bluetooth, OnStar, Dual Side air bags, heated seats, dual power seats, leather, daytime running lights, alloy wheels. Notes: Item Location: Grand Island, NE 68803 Equipment Sold "AS IS, WHERE IS": All equipment/property is sold "AS IS, WHERE IS" with no warranty or guarantees, expressed or implied, No operational assessments or testing have been made by Del Peterson on this item, it has been photographed ONLY.



#250 - 2015 Ford Taurus SE (PD315)

2015 Ford Taurus SE (PD315), 96,674 miles, automatic, 6 speed w/ SelShift, 4 cylinder EcoBoost Turbo 2.0L, traction control, AdvanceTrac, ABS, keyless entry, Air, power windows/locks, AM/FM stereo, MP3, bluetooth, MyFord, SYNC, Backup camera, dual/side airbags, dual power seats, alloy wheels. Notes: Item Location: Grand Island, NE 68803 Equipment Sold "AS IS, WHERE IS": All equipment/property is sold "AS IS, WHERE IS" with no warranty or guarantees, expressed or implied, No operational assessments or testing have been made by Del Peterson on this item, it has been photographed ONLY.



#251 - 2014 Ford Expedition Limited (PD316)

2014 Ford Expedition Limited (PD316), 37,885 miles, automatic, 6 speed overdrive, V8, flex fuel, 5.4 Liter, black/black, traction control, AdvanceTrac, ABS, anti-theft, keyless entry, air & air rear, power windows/locks, AM/FM Stereo, MP3, premium sound, SiriusXM Satellite, Navigation System, DVD System, SYNC, parking sensors front/rear, backup camera, dual side airbags, heated/cooled seats, dual power seats, leather, power third row, privacy glass, running boards, roof rack, alloy wheels. Notes: Item Location: Grand Island, NE 68803 Equipment Sold "AS IS, WHERE IS": All equipment/property is sold "AS IS, WHERE IS" with no warranty or guarantees, expressed or implied, No operational assessments or testing have been made by Del Peterson on this item, it has been photographed ONLY.



#252 - 2009 Ford F250 Super Duty Crew Cab (PD317)

2009 Ford F250 Super Duty Crew Cab (PD317), King Ranch, 161,000 miles, V8 Turbo Diesel 6.4L, ABS, anti-theft, keyless entry, air, power rear window, power window/door, cruise, AM/FM stereo, MP3, premium sound, Sirius Satellite, SYNC, parking sensors, dual air bags, heated seats, dual power seats, leather, fog lights, running boards, custom bumper, two-tone paint, tow package, alloy wheels. Notes: Item Location: Grand Island, NE 68803 Equipment Sold "AS IS, WHERE IS": All equipment/property is sold "AS IS, WHERE IS" with no warranty or guarantees, expressed or implied, No operational assessments or testing have been made by Del Peterson on this item, it has been photographed ONLY.



#253 - Custom Spray Coupe Trailer(CG231)

Custom Spray Coupe Trailer(CG231), custom built spray trailer. Notes: NO TITLE. Item Location: Red Oak, IA 51566 Equipment Sold "AS IS, WHERE IS": All equipment/property is sold "AS IS, WHERE IS" with no warranty or guarantees, expressed or implied, No operational assessments or testing have been made by Del Peterson on this item, it has been photographed ONLY.



#254 - John Deere 845 (NJP305)

John Deere 845 (NJP305), 12 row 30" row crop cultivator, rolling shields, flat fold. Notes: Item Location: Belmond, IA 50421 Equipment Sold "AS IS, WHERE IS": All equipment/property is sold "AS IS, WHERE IS" with no warranty or guarantees, expressed or implied, No operational assessments or testing have been made by Del Peterson on this item, it has been photographed ONLY.



#255 - John Deere 400 (NJP304)

John Deere 400 (NJP304), flat fold 30' rotary hoe. Notes: Item Location: Belmond, IA 50421 Equipment Sold "AS IS, WHERE IS": All equipment/property is sold "AS IS, WHERE IS" with no warranty or guarantees, expressed or implied, No operational assessments or testing have been made by Del Peterson on this item, it has been photographed ONLY.



#257 - IHC 720 (NJP 309)

IHC 720 (NJP 309), toggle trip plow, 5-18s. Notes: Item Location: Belmond, IA 50421 Equipment Sold "AS IS, WHERE IS": All equipment/property is sold "AS IS, WHERE IS" with no warranty or guarantees, expressed or implied, No operational assessments or testing have been made by Del Peterson on this item, it has been photographed ONLY.



#258 - Kelly Ryan Feed-R-Wagon (NJP307)

Kelly Ryan Feed-R-Wagon (NJP307), 4x10'. Notes: Item Location: Belmond, IA 50421 Equipment Sold "AS IS, WHERE IS": All equipment/property is sold "AS IS, WHERE IS" with no warranty or guarantees, expressed or implied, No operational assessments or testing have been made by Del Peterson on this item, it has been photographed ONLY.



#259 - Badger Silage Wagon (NJP306)

Badger Silage Wagon (NJP306). Notes: Item Location: Belmond, IA 50421 Equipment Sold "AS IS, WHERE IS": All equipment/property is sold "AS IS, WHERE IS" with no warranty or guarantees, expressed or implied, No operational assessments or testing have been made by Del Peterson on this item, it has been photographed ONLY.



#260 - Meyer 24' Bale Wagon (NJP303)

Meyer 24' Bale Wagon (NJP303), silage insert. Notes: Item Location: Belmond, IA 50421 Equipment Sold "AS IS, WHERE IS": All equipment/property is sold "AS IS, WHERE IS" with no warranty or guarantees, expressed or implied, No operational assessments or testing have been made by Del Peterson on this item, it has been photographed ONLY.



#261 - Gehl 95 Grinder Mixer (NJP308)

Gehl 95 Grinder Mixer (NJP308). Notes: Needs a new flywheel bearing. Item Location: Belmond, IA 50421 Equipment Sold "AS IS, WHERE IS": All equipment/property is sold "AS IS, WHERE IS" with no warranty or guarantees, expressed or implied, No operational assessments or testing have been made by Del Peterson on this item, it has been photographed ONLY.



#262 - Peck Grain Auger (NJP310)

Peck Grain Auger (NJP310), Peck 8x31' grain auger, PTO drive. Notes: Item Location: Belmond, IA 50421 Equipment Sold "AS IS, WHERE IS": All equipment/property is sold "AS IS, WHERE IS" with no warranty or guarantees, expressed or implied, No operational assessments or testing have been made by Del Peterson on this item, it has been photographed ONLY.



#263 - Vermeer 605J Round Baler (NJP301)

Vermeer 605J Round Baler (NJP301), chain oiler, bale counter, hydraulic twine tie. Notes: Item Location: Belmond, IA 50421 Equipment Sold "AS IS, WHERE IS": All equipment/property is sold "AS IS, WHERE IS" with no warranty or guarantees, expressed or implied, No operational assessments or testing have been made by Del Peterson on this item, it has been photographed ONLY.



#264 - Ogden 10 Wheel Rake (NJP302)

Ogden 10 Wheel Rake (NJP302). Notes: Item Location: Belmond, IA 50421 Equipment Sold "AS IS, WHERE IS": All equipment/property is sold "AS IS, WHERE IS" with no warranty or guarantees, expressed or implied, No operational assessments or testing have been made by Del Peterson on this item, it has been photographed ONLY.



#265 - CaseIH 4230 Tractor (NJP311)

CaseIH 4230 Tractor (NJP311), FWA, diesel engine, shuttle shift transmission, CaseIH 2255 loader with quick tach, 3473 hours. Notes: Item Location: Belmond, IA 50421 Equipment Sold "AS IS, WHERE IS": All equipment/property is sold "AS IS, WHERE IS" with no warranty or guarantees, expressed or implied, No operational assessments or testing have been made by Del Peterson on this item, it has been photographed ONLY.



#266 - Mini Excavator Bucket (TR3421)

Mini Excavator Bucket (TR3421), 301.9 bucket, ID# RN05-65. Notes: Item Location: Scottsbluff, NE 69361 Equipment Sold "AS IS, WHERE IS": All equipment/property is sold "AS IS, WHERE IS" with no warranty or guarantees, expressed or implied, No operational assessments or testing have been made by Del Peterson on this item, it has been photographed ONLY.



#267 - Mini Excavator Bucket (TR3417)

Mini Excavator Bucket (TR3417), 301.9 bucket, ID# RN07-400. Notes: Item Location: Scottsbluff, NE 69361 Equipment Sold "AS IS, WHERE IS": All equipment/property is sold "AS IS, WHERE IS" with no warranty or guarantees, expressed or implied, No operational assessments or testing have been made by Del Peterson on this item, it has been photographed ONLY.



#268 - Mini Excavator Bucket (TR3409)

Mini Excavator Bucket (TR3409), 301.9 bucket, ID# CU120206. Notes: Item Location: Scottsbluff, NE 69361 Equipment Sold "AS IS, WHERE IS": All equipment/property is sold "AS IS, WHERE IS" with no warranty or guarantees, expressed or implied, No operational assessments or testing have been made by Del Peterson on this item, it has been photographed ONLY.



#269 - Mini Excavator Bucket (TR3419)

Mini Excavator Bucket (TR3419), 302.5 bucket, ID# RN08-359. Notes: Item Location: Scottsbluff, NE 69361 Equipment Sold "AS IS, WHERE IS": All equipment/property is sold "AS IS, WHERE IS" with no warranty or guarantees, expressed or implied, No operational assessments or testing have been made by Del Peterson on this item, it has been photographed ONLY.



#270 - Mini Excavator Bucket (TR3403)

Mini Excavator Bucket (TR3403), 302.5 bucket, ID# CN120010. Notes: Item Location: Scottsbluff, NE 69361 Equipment Sold "AS IS, WHERE IS": All equipment/property is sold "AS IS, WHERE IS" with no warranty or guarantees, expressed or implied, No operational assessments or testing have been made by Del Peterson on this item, it has been photographed ONLY.



#271 - Mini Excavator Bucket (TR3404)

Mini Excavator Bucket (TR3404), 302.5 bucket, ID# CN120498. Notes: Item Location: Scottsbluff, NE 69361 Equipment Sold "AS IS, WHERE IS": All equipment/property is sold "AS IS, WHERE IS" with no warranty or guarantees, expressed or implied, No operational assessments or testing have been made by Del Peterson on this item, it has been photographed ONLY.



#272 - Mini Excavator Bucket (TR3418)

Mini Excavator Bucket (TR3418), OLD 304CCR bucket, ID# RN07-475. Notes: Item Location: Scottsbluff, NE 69361 Equipment Sold "AS IS, WHERE IS": All equipment/property is sold "AS IS, WHERE IS" with no warranty or guarantees, expressed or implied, No operational assessments or testing have been made by Del Peterson on this item, it has been photographed ONLY.



#273 - Mini Excavator Bucket (TR3420)

Mini Excavator Bucket (TR3420), OLD 304CCR bucket, ID# RN09-74. Notes: Item Location: Scottsbluff, NE 69361 Equipment Sold "AS IS, WHERE IS": All equipment/property is sold "AS IS, WHERE IS" with no warranty or guarantees, expressed or implied, No operational assessments or testing have been made by Del Peterson on this item, it has been photographed ONLY.



#274 - Trencher Frost Chain (TR3423)

Trencher Frost Chain (TR3423), off of Ditch Witch RT-45. Notes: Item Location: Scottsbluff, NE 69361 Equipment Sold "AS IS, WHERE IS": All equipment/property is sold "AS IS, WHERE IS" with no warranty or guarantees, expressed or implied, No operational assessments or testing have been made by Del Peterson on this item, it has been photographed ONLY.



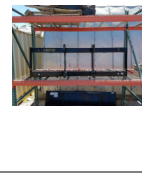
#275 - Snow Blower Attachment (TR3407)

Snow Blower Attachment (TR3407), Cat snow blower attachment for skid steer, ID# 131702. Notes: Item Location: Scottsbluff, NE 69361 Equipment Sold "AS IS, WHERE IS": All equipment/property is sold "AS IS, WHERE IS" with no warranty or guarantees, expressed or implied, No operational assessments or testing have been made by Del Peterson on this item, it has been photographed ONLY.



#276 - Bale Spear (TR3405)

Bale Spear (TR3405), bale spear attachment for skid steer, ID# 120913. Notes: Item Location: Scottsbluff, NE 69361 Equipment Sold "AS IS, WHERE IS": All equipment/property is sold "AS IS, WHERE IS" with no warranty or guarantees, expressed or implied, No operational assessments or testing have been made by Del Peterson on this item, it has been photographed ONLY.



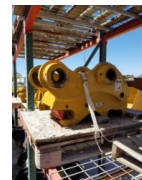
#277 - Transit Tripod (TR3401)

Transit Tripod (TR3401), Transit Tripod, ID CN10-297. Notes: Item Location: Scottsbluff, NE 69361 Equipment Sold "AS IS, WHERE IS": All equipment/property is sold "AS IS, WHERE IS" with no warranty or guarantees, expressed or implied, No operational assessments or testing have been made by Del Peterson on this item, it has been photographed ONLY.



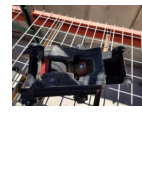
#278 - Mini Excavator Coupler (TR3414)

Mini Excavator Coupler (TR3414), NEW 320QC, came off of 320 excavator, ID# HN120063A. Notes: Item Location: Scottsbluff, NE 69361 Equipment Sold "AS IS, WHERE IS": All equipment/property is sold "AS IS, WHERE IS" with no warranty or guarantees, expressed or implied, No operational assessments or testing have been made by Del Peterson on this item, it has been photographed ONLY.



#279 - Mini Excavator Coupler (TR3406)

Mini Excavator Coupler (TR3406), 302 coupler, came off of 302 excavator, ID# CN131402. Notes: Item Location: Scottsbluff, NE 69361 Equipment Sold "AS IS, WHERE IS": All equipment/property is sold "AS IS, WHERE IS" with no warranty or guarantees, expressed or implied, No operational assessments or testing have been made by Del Peterson on this item, it has been photographed ONLY.



#280 - Mini Excavator Coupler (TR3422)

Mini Excavator Coupler (TR3422), 302 coupler, came off o f 302 excavator, ID# 188242413. Notes: Item Location: Scottsbluff, NE 69361 Equipment Sold "AS IS, WHERE IS": All equipment/property is sold "AS IS, WHERE IS" with no warranty or guarantees, expressed or implied, No operational assessments or testing have been made by Del Peterson on this item, it has been photographed ONLY.



#281 - Mini Excavator Coupler (TR3402)

Mini Excavator Coupler (TR3402), 304 quick coupler, came off o f 304 excavator, ID# CN111429. Notes: Item Location: Scottsbluff, NE 69361 Equipment Sold "AS IS, WHERE IS": All equipment/property is sold "AS IS, WHERE IS" with no warranty or guarantees, expressed or implied, No operational assessments or testing have been made by Del Peterson on this item, it has been photographed ONLY.



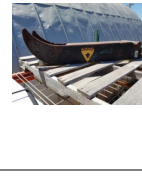
#282 - Mini Excavator Coupler (TR3408)

Mini Excavator Coupler (TR3408), 304 quick coupler, came off o f 304 excavator, ID# CN140592. Notes: Item Location: Scottsbluff, NE 69361 Equipment Sold "AS IS, WHERE IS": All equipment/property is sold "AS IS, WHERE IS" with no warranty or guarantees, expressed or implied, No operational assessments or testing have been made by Del Peterson on this item, it has been photographed ONLY.



#283 - MinBackhoe Thumb (TR3411)

Backhoe Thumb (TR3411), Backhoe thumb attachment, fits Cat 420 backhoe, ID# HN04-255. Notes: Item Location: Scottsbluff, NE 69361 Equipment Sold "AS IS, WHERE IS": All equipment/property is sold "AS IS, WHERE IS" with no warranty or guarantees, expressed or implied, No operational assessments or testing have been made by Del Peterson on this item, it has been photographed ONLY.



#284 - Backhoe Forks (TR3410)

Backhoe Forks (TR3410), Backhoe Forks attachment, fits Cat 420 backhoe, ID# DAN000656. Notes: Item Location: Scottsbluff, NE 69361 Equipment Sold "AS IS, WHERE IS": All equipment/property is sold "AS IS, WHERE IS" with no warranty or guarantees, expressed or implied, No operational assessments or testing have been made by Del Peterson on this item, it has been photographed ONLY.



#285 - Loader Forks (TR3416)

Loader Forks (TR3416), 950 loader Forks attachment, fits Cat 950 loader, ID# HU06-7. Notes: Item Location: Scottsbluff, NE 69361 Equipment Sold "AS IS, WHERE IS": All equipment/property is sold "AS IS, WHERE IS" with no warranty or guarantees, expressed or implied, No operational assessments or testing have been made by Del Peterson on this item, it has been photographed ONLY.



#286 - Backhoe bucket (TR3412)

Backhoe bucket (TR3412), 30" 330 bucket attachment, fits a Cat 330 or 336, ID# HN06-446. Notes: Item Location: Scottsbluff, NE 69361 Equipment Sold "AS IS, WHERE IS": All equipment/property is sold "AS IS, WHERE IS" with no warranty or guarantees, expressed or implied, No operational assessments or testing have been made by Del Peterson on this item, it has been photographed ONLY.



#287 - Backhoe Forks (TR3415)

Backhoe Forks (TR3415), 420 backhoe forks, fits Cat 420 backhoe, ID# HN120205. Notes: Item Location: Scottsbluff, NE 69361 Equipment Sold "AS IS, WHERE IS": All equipment/property is sold "AS IS, WHERE IS" with no warranty or guarantees, expressed or implied, No operational assessments or testing have been made by Del Peterson on this item, it has been photographed ONLY.



#288 - Backhoe Forks (TR3413)

Backhoe Forks (TR3413), 420 backhoe forks, fits Cat 420 backhoe, ID# HN110299. Notes: Item Location: Scottsbluff, NE 69361 Equipment Sold "AS IS, WHERE IS": All equipment/property is sold "AS IS, WHERE IS" with no warranty or guarantees, expressed or implied, No operational assessments or testing have been made by Del Peterson on this item, it has been photographed ONLY.



#289 - Sullivan Air compressor (TR3421)

Sullivan Air compressor (TR3421), Model 185 portable, Diesel motor, single axle, 1895 hours, ID# CN130384. Notes: ENGINE NOT RUNNING. Item Location: North Platte, NE 69101 Equipment Sold "AS IS, WHERE IS": All equipment/property is sold "AS IS, WHERE IS" with no warranty or guarantees, expressed or implied, No operational assessments or testing have been made by Del Peterson on this item, it has been photographed ONLY.



#290 - 1 ton AC units (TR3422)

1 ton AC units (TR3422), 1 ton AC unit, ID# EN110787. Notes: Item Location: Omaha, NE 68138 Equipment Sold "AS IS, WHERE IS": All equipment/property is sold "AS IS, WHERE IS" with no warranty or guarantees, expressed or implied, No operational assessments or testing have been made by Del Peterson on this item, it has been photographed ONLY.



#291 - 1 ton AC units (TR3423)

1 ton AC units (TR3423), 1 ton AC unit, ID# EN110788. Notes: Item Location: Omaha, NE 68138 Equipment Sold "AS IS, WHERE IS": All equipment/property is sold "AS IS, WHERE IS" with no warranty or guarantees, expressed or implied, No operational assessments or testing have been made by Del Peterson on this item, it has been photographed ONLY.



#292 - 1 ton AC units (TR3424)

1 ton AC units (TR3424), 1 ton AC unit, ID# EN110789. Notes: Item Location: Omaha, NE 68138 Equipment Sold "AS IS, WHERE IS": All equipment/property is sold "AS IS, WHERE IS" with no warranty or guarantees, expressed or implied, No operational assessments or testing have been made by Del Peterson on this item, it has been photographed ONLY.



#293 - Transfer Switch (TR3428)

Transfer Switch (TR3428), Transfer switch ID# TS10, 400 amp, 208 volts. Notes: Item Location: Omaha, NE 68138 Equipment Sold "AS IS, WHERE IS": All equipment/property is sold "AS IS, WHERE IS" with no warranty or guarantees, expressed or implied, No operational assessments or testing have been made by Del Peterson on this item, it has been photographed ONLY.



#294 - Transfer Switch (TR3430)

Transfer Switch (TR3430), Transfer switch ID# TS3, 100 amp, 240 volts. Notes: Item Location: Omaha, NE 68138 Equipment Sold "AS IS, WHERE IS": All equipment/property is sold "AS IS, WHERE IS" with no warranty or guarantees, expressed or implied, No operational assessments or testing have been made by Del Peterson on this item, it has been photographed ONLY.



#297 - Light Tower (TR3434)

Light Tower (TR3434), Magnum light tower, portabile, single axle, 4 lights, diesel engine, ID# CN111290. Notes: ENGINE NOT RUNNING Item Location: Council Bluffs, IA 51501 Equipment Sold "AS IS, WHERE IS": All equipment/property is sold "AS IS, WHERE IS" with no warranty or guarantees, expressed or implied, No operational assessments or testing have been made by Del Peterson on this item, it has been photographed ONLY.



#298 - Truck Bed Liner (NJP290)

Truck Bed Liner (NJP290), will fit Chevrolet or GMC, 6'6". Notes: Item Location: Blair, NE 68008 Equipment Sold "AS IS, WHERE IS": All equipment/property is sold "AS IS, WHERE IS" with no warranty or guarantees, expressed or implied, No operational assessments or testing have been made by Del Peterson on this item, it has been photographed ONLY.



#299 - Truck Bed Liner (NJP292)

Truck Bed Liner (NJP292), will fit Colorado or Canyon, 6'. Notes: Item Location: Blair, NE 68008 Equipment Sold "AS IS, WHERE IS": All equipment/property is sold "AS IS, WHERE IS" with no warranty or guarantees, expressed or implied, No operational assessments or testing have been made by Del Peterson on this item, it has been photographed ONLY.



#300 - Truck Bed Topper (NJP293)

Truck Bed Topper (NJP293), will fit Silverado or Sierra, 6'5". Notes: Front and rear windows broken. Item Location: Blair, NE 68008 Equipment Sold "AS IS, WHERE IS": All equipment/property is sold "AS IS, WHERE IS" with no warranty or guarantees, expressed or implied, No operational assessments or testing have been made by Del Peterson on this item, it has been photographed ONLY.



#301 - 2014-2017 Chevrolet Silverado Truck Bed (NJP294)

2014-2017 Chevrolet Silverado Truck Bed (NJP294), 8'. Notes: Missing tailgate. Item Location: Blair, NE 68008 Equipment Sold "AS IS, WHERE IS": All equipment/property is sold "AS IS, WHERE IS" with no warranty or guarantees, expressed or implied, No operational assessments or testing have been made by Del Peterson on this item, it has been photographed ONLY.



#302 - 2014-2017 Chevrolet Silverado Truck Bed (NJP296)

2014-2017 Chevrolet Silverado Truck Bed (NJP296), 8'. Notes: Missing tailgate. Item Location: Blair, NE 68008 Equipment Sold "AS IS, WHERE IS": All equipment/property is sold "AS IS, WHERE IS" with no warranty or guarantees, expressed or implied, No operational assessments or testing have been made by Del Peterson on this item, it has been photographed ONLY.



#303 - 2007-2013 Chevrolet Truck Bed (NJP295)

2007-2013 Chevrolet Truck Bed (NJP295), 8'. Notes: Item Location: Blair, NE 68008 Equipment Sold "AS IS, WHERE IS": All equipment/property is sold "AS IS, WHERE IS" with no warranty or guarantees, expressed or implied, No operational assessments or testing have been made by Del Peterson on this item, it has been photographed ONLY.



#304 - 2007-2013 Chevrolet Truck Bed (NJP297)

2007-2013 Chevrolet Truck Bed (NJP297), 8'. Notes: Item Location: Blair, NE 68008 Equipment Sold "AS IS, WHERE IS": All equipment/property is sold "AS IS, WHERE IS" with no warranty or guarantees, expressed or implied, No operational assessments or testing have been made by Del Peterson on this item, it has been photographed ONLY.



#305 - 2015-2017 Chevrolet Silverado HD Truck Bed (NJP298)

2015-2017 Chevrolet Silverado HD Truck Bed (NJP298), 8'. Notes: Item Location: Blair, NE 68008 Equipment Sold "AS IS, WHERE IS": All equipment/property is sold "AS IS, WHERE IS" with no warranty or guarantees, expressed or implied, No operational assessments or testing have been made by Del Peterson on this item, it has been photographed ONLY.



#306 - 2015-2017 Chevrolet Silverado 3500 HD Dually Truck Bed (NJP299)

2015-2017 Chevrolet Silverado 3500 HD Dually Truck Bed (NJP299), 8'. Notes: Item Location: Blair, NE 68008 Equipment Sold "AS IS, WHERE IS": All equipment/property is sold "AS IS, WHERE IS" with no warranty or guarantees, expressed or implied, No operational assessments or testing have been made by Del Peterson on this item, it has been photographed ONLY.



#307 - 2007-2013 Chevrolet Truck Bed (NJP300)

2007-2013 Chevrolet Truck Bed (NJP300), 8'. Notes: Item Location: Blair, NE 68008 Equipment Sold "AS IS, WHERE IS": All equipment/property is sold "AS IS, WHERE IS" with no warranty or guarantees, expressed or implied, No operational assessments or testing have been made by Del Peterson on this item, it has been photographed ONLY.



#308 - Predator Truck Topper (NJP291)

Predator Truck Topper (NJP291), 5'8". Notes: Item Location: Blair, NE 68008 Equipment Sold "AS IS, WHERE IS": All equipment/property is sold "AS IS, WHERE IS" with no warranty or guarantees, expressed or implied, No operational assessments or testing have been made by Del Peterson on this item, it has been photographed ONLY.



#309 - DMI Row Markers (NP4108)

DMI Row Markers (NP4108), came off 16 row toolbar. Notes: Item Location: Mount Pulaski, IL 62548 Equipment Sold "AS IS, WHERE IS": All equipment/property is sold "AS IS, WHERE IS" with no warranty or guarantees, expressed or implied, No operational assessments or testing have been made by Del Peterson on this item, it has been photographed ONLY.



#310 - 1999 Dodge Ram 1500 ST Quad Cab (PD321)

1999 Dodge Ram 1500 ST Quad Cab (PD321), 5.9L V8, Automatic, 4x4, shows 118000 miles. Notes: Needs Brake Work. Item Location: Grand Island, NE 68803 Equipment Sold "AS IS, WHERE IS": All equipment/property is sold "AS IS, WHERE IS" with no warranty or guarantees, expressed or implied, No operational assessments or testing have been made by Del Peterson on this item, it has been photographed ONLY.



#311 - 2000 GMC Yukon XL (PD322)

2000 GMC Yukon XL (PD322), Vortec 5.3L V8 , Automatic, 4x4, shows 197000 miles. Notes: Item Location: Grand Island, NE 68803 Equipment Sold "AS IS, WHERE IS": All equipment/property is sold "AS IS, WHERE IS" with no warranty or guarantees, expressed or implied, No operational assessments or testing have been made by Del Peterson on this item, it has been photographed ONLY.



#312 - 2001 Suzuki Esteem GL (PD323)

2001 Suzuki Esteem GL (PD323), 1.0L Double Overhead Cam 16V, Automatic, shows 95000 miles. Notes: Driver Window Needs Motor. Item Location: Grand Island, NE 68803 Equipment Sold "AS IS, WHERE IS": All equipment/property is sold "AS IS, WHERE IS" with no warranty or guarantees, expressed or implied, No operational assessments or testing have been made by Del Peterson on this item, it has been photographed ONLY.



#313 - 1999 Cadillac Seville SLS (PD324)

1999 Cadillac Seville SLS (PD324), 4.0L NA V8 DOHC 32V, Automatic, AM/FM CD Player, shows 152000 miles. Notes: Item Location: Grand Island, NE 68803 Equipment Sold "AS IS, WHERE IS": All equipment/property is sold "AS IS, WHERE IS" with no warranty or guarantees, expressed or implied, No operational assessments or testing have been made by Del Peterson on this item, it has been photographed ONLY.

