

## Auction catalog

<b>Title</b>	Online Auction June 20, 2017 10AM Central
<b>Description</b>	The following line of Fertilizer, Farm Implement, Truck, Trailer & Construction Equipment will be sold online with the bidding ending on June 20, 2017. Location of the equipment is given. Bidding within the last minute before the closing of a lot will extend the bidding time by an additional minute. Be prepared to bid accordingly. For more information, contact Del Peterson & Associates: 419 West Judy Drive Fremont NE, 68025 Phone: 800-492-9090 or 402-721-4388 Fax: 402-721-4583 E-mail: auction@delpeterson.com
<b>Date</b>	Tue, Jun 20, 2017
<b>Starts at</b>	10:00 AM
<b>Address</b>	PO Box 654, Fremont, NE 68026 USA
<b>Categories</b>	

### #1 - Tire Rim (NP4965)

Tire Rim (NP4965), 18" tire rim, 8 bolt rim pattern. Notes: Item Location: Galva, KS 67443 Equipment Sold "AS IS, WHERE IS": All equipment/property is sold "AS IS, WHERE IS" with no warranty or guarantees, expressed or implied, No operational assessments or testing have been made by Del Peterson on this item, it has been photographed ONLY.



### #2 - (5) Tire Rims (NP4966)

(5) Tire Rims (NP4966), 17.5" tire rim, 8 bolt rim pattern. Notes: Item Location: Galva, KS 67443 Equipment Sold "AS IS, WHERE IS": All equipment/property is sold "AS IS, WHERE IS" with no warranty or guarantees, expressed or implied, No operational assessments or testing have been made by Del Peterson on this item, it has been photographed ONLY.



### #3 - (4) Tire Rims (NP4967)

(4) Tire Rims (NP4967), 17.5" tire rim, 8 bolt rim pattern. Notes: Item Location: Galva, KS 67443 Equipment Sold "AS IS, WHERE IS": All equipment/property is sold "AS IS, WHERE IS" with no warranty or guarantees, expressed or implied, No operational assessments or testing have been made by Del Peterson on this item, it has been photographed ONLY.



### #4 - (4) Tire Rims (NP4968)

(4) Tire Rims (NP4968), 17.5" tire rim, 8 bolt rim pattern. Notes: Item Location: Galva, KS 67443 Equipment Sold "AS IS, WHERE IS": All equipment/property is sold "AS IS, WHERE IS" with no warranty or guarantees, expressed or implied, No operational assessments or testing have been made by Del Peterson on this item, it has been photographed ONLY.



### #5 - Cone Bottom Tank Stand (NP4972)

Cone Bottom Tank Stand (NP4972). Notes: Item Location: Scott City, KS 67871 Equipment Sold "AS IS, WHERE IS": All equipment/property is sold "AS IS, WHERE IS" with no warranty or guarantees, expressed or implied, No operational assessments or testing have been made by Del Peterson on this item, it has been photographed ONLY.



### #6 - Cone Bottom Tank Stand (NP4973)

Cone Bottom Tank Stand (NP4973). Notes: Item Location: Scott City, KS 67871 Equipment Sold "AS IS, WHERE IS": All equipment/property is sold "AS IS, WHERE IS" with no warranty or guarantees, expressed or implied, No operational assessments or testing have been made by Del Peterson on this item, it has been photographed ONLY.



### #7 - KSI Equipment (PZ6395)

KSI Equipment (PZ6395), KSI air operated gate, KSI air operated 2-way valve. Notes: Item Location: Lena, IL 61048 Equipment Sold "AS IS, WHERE IS": All equipment/property is sold "AS IS, WHERE IS" with no warranty or guarantees, expressed or implied, No operational assessments or testing have been made by Del Peterson on this item, it has been photographed ONLY.



---

### #8 - New Grain Chutes (PZ6380)

New Grain Chutes (PZ6380), 16 - New GSI grain chutes. Notes: Item Location: Baileyville, IL 61007 Equipment Sold "AS IS, WHERE IS": All equipment/property is sold "AS IS, WHERE IS" with no warranty or guarantees, expressed or implied, No operational assessments or testing have been made by Del Peterson on this item, it has been photographed ONLY.



---

### #9 - Dodge Drives (PZ6382)

Dodge Drives (PZ6382), Pallet of Dodge Drives. Notes: Item Location: Baileyville, IL 61007 Equipment Sold "AS IS, WHERE IS": All equipment/property is sold "AS IS, WHERE IS" with no warranty or guarantees, expressed or implied, No operational assessments or testing have been made by Del Peterson on this item, it has been photographed ONLY.



---

### #10 - Catwalk (PZ6388)

Catwalk (PZ6388), approx. 42' steel catwalk. Notes: Item Location: Baileyville, IL 61007 Equipment Sold "AS IS, WHERE IS": All equipment/property is sold "AS IS, WHERE IS" with no warranty or guarantees, expressed or implied, No operational assessments or testing have been made by Del Peterson on this item, it has been photographed ONLY.



---

### #11 - Rims (PZ6372)

Rims (PZ6372), 4 - 22.5 x 8.25 rims, 8 bolt. Notes: Item Location: Baileyville, IL 61007 Equipment Sold "AS IS, WHERE IS": All equipment/property is sold "AS IS, WHERE IS" with no warranty or guarantees, expressed or implied, No operational assessments or testing have been made by Del Peterson on this item, it has been photographed ONLY.



---

### #12 - Rims (PZ6373)

Rims (PZ6373), 16 - various sizes of rims. Notes: Item Location: Baileyville, IL 61007 Equipment Sold "AS IS, WHERE IS": All equipment/property is sold "AS IS, WHERE IS" with no warranty or guarantees, expressed or implied, No operational assessments or testing have been made by Del Peterson on this item, it has been photographed ONLY.



---

### #13 - Rim (PZ6374)

Rim (PZ6374), 1 - 22.5 x 13.5 rim, 8 bolt. Notes: Item Location: Baileyville, IL 61007 Equipment Sold "AS IS, WHERE IS": All equipment/property is sold "AS IS, WHERE IS" with no warranty or guarantees, expressed or implied, No operational assessments or testing have been made by Del Peterson on this item, it has been photographed ONLY.



---

### #14 - Rims (PZ6375)

Rims (PZ6375), 2 - 12.5 x 10.5 rims, 6 bolt. Notes: Item Location: Baileyville, IL 61007 Equipment Sold "AS IS, WHERE IS": All equipment/property is sold "AS IS, WHERE IS" with no warranty or guarantees, expressed or implied, No operational assessments or testing have been made by Del Peterson on this item, it has been photographed ONLY.



---

### #15 - Rims (PZ6376)

Rims (PZ6376), 2 - 16.5 x 9.75 rims, 8 bolt. Notes: Item Location: Baileyville, IL 61007 Equipment Sold "AS IS, WHERE IS": All equipment/property is sold "AS IS, WHERE IS" with no warranty or guarantees, expressed or implied, No operational assessments or testing have been made by Del Peterson on this item, it has been photographed ONLY.



---

### #16 - Rims (PZ6377)

Rims (PZ6377), 2 - 16.1 x 18 rims, 8 bolt. Notes: Item Location: Baileyville, IL 61007 Equipment Sold "AS IS, WHERE IS": All equipment/property is sold "AS IS, WHERE IS" with no warranty or guarantees, expressed or implied, No operational assessments or testing have been made by Del Peterson on this item, it has been photographed ONLY.



---

### #17 - Rims (PZ6378)

Rims (PZ6378), 2 - 22.5 x 8.5 rims. Notes: Item Location: Baileyville, IL 61007 Equipment Sold "AS IS, WHERE IS": All equipment/property is sold "AS IS, WHERE IS" with no warranty or guarantees, expressed or implied, No operational assessments or testing have been made by Del Peterson on this item, it has been photographed ONLY.



---

### #18 - Rims (PZ6379)

Rims (PZ6379), 2 - 14 x 6 rims, 12 bolt. Notes: Item Location: Baileyville, IL 61007 Equipment Sold "AS IS, WHERE IS": All equipment/property is sold "AS IS, WHERE IS" with no warranty or guarantees, expressed or implied, No operational assessments or testing have been made by Del Peterson on this item, it has been photographed ONLY.



---

### #19 - 2008 Honda TRX420 Unit #11446 (DR6223)

2008 Honda TRX420 Unit #11446 (DR6223), gas engine, automatic shift, 4X4, front and rear racks, shows 6340 miles. Notes: NO TITLE. Item Location: Cash, AR 72421 Equipment Sold "AS IS, WHERE IS": All equipment/property is sold "AS IS, WHERE IS" with no warranty or guarantees, expressed or implied, No operational assessments or testing have been made by Del Peterson on this item, it has been photographed ONLY.



---

### #20 - Adams Tender Unit #2440 (RMC017)

Adams Tender Unit #2440 (RMC017), 5 ton stainless steel dry tender cart, tandem axle, gas engine hydraulic power unit. Notes: Item Location: Yazoo City, MS 39194 Equipment Sold "AS IS, WHERE IS": All equipment/property is sold "AS IS, WHERE IS" with no warranty or guarantees, expressed or implied, No operational assessments or testing have been made by Del Peterson on this item, it has been photographed ONLY.



---

### #21 - USC Conveyor (RMC018)

USC Conveyor (RMC018), series 2000, 20' portable conveyor, top drive electric motor. Notes: Item Location: Yazoo City, MS 39194 Equipment Sold "AS IS, WHERE IS": All equipment/property is sold "AS IS, WHERE IS" with no warranty or guarantees, expressed or implied, No operational assessments or testing have been made by Del Peterson on this item, it has been photographed ONLY.



---

### #22 - Case IH MXU135 (DR6181)

Case IH MXU135 (DR6181), MFWD tractor, diesel engine, shuttle shift drive, cab heat/air conditioning, 4 hydraulic outlets, PTO, rear 3 point hitch, 14.9R28 front tires, 18.4-38 rears, AM/FM CD radio, meter shows 2898 hours. Notes: Tractor will have more hours by auction as it is still being used. Business band radio in cab IS NOT INCLUDED. This tractor is being resold it was thought to have a shifting problem. It has been taken to dealer checked out and fix. See picture of inspection. Item Location: Genoa, WI 54632 Equipment Sold "AS IS, WHERE IS": All equipment/property is sold "AS IS, WHERE IS" with no warranty or guarantees, expressed or implied, No operational assessments or testing have been made by Del Peterson on this item, it has been photographed ONLY.



---

### #23 - 1997 Blu-Jet LandWalker Anhydrous Toolbar (NP4958)

1997 Blu-Jet LandWalker Anhydrous Toolbar (NP4958), 21 knife, v-blades, hydraulic wings, walking tandems, 11L-15 tires. Notes: Item Location: Tampa, KS 67483 Equipment Sold "AS IS, WHERE IS": All equipment/property is sold "AS IS, WHERE IS" with no warranty or guarantees, expressed or implied, No operational assessments or testing have been made by Del Peterson on this item, it has been photographed ONLY.



---

### #24 - Tyler Dry Spreader (NP4960)

Tyler Dry Spreader (NP4960), painted stainless, single axle, 21.5L-16.1 tires, dual spinners, 540 PTO. Notes: Item Location: Tampa, KS 67483 Equipment Sold "AS IS, WHERE IS": All equipment/property is sold "AS IS, WHERE IS" with no warranty or guarantees, expressed or implied, No operational assessments or testing have been made by Del Peterson on this item, it has been photographed ONLY.



---

### #25 - Liquid Applicator (NP4959)

Liquid Applicator (NP4959), 12 knife, double disc sealers, Blu-Jet coulters, hydraulic wings, walking tandems, 9.5L-15 tires, Snyder poly cone bottom tank, CDS John Blue Model 12L ground drive pump (S/N 256369). Notes: Item Location: Tampa, KS 67483 Equipment Sold "AS IS, WHERE IS": All equipment/property is sold "AS IS, WHERE IS" with no warranty or guarantees, expressed or implied, No operational assessments or testing have been made by Del Peterson on this item, it has been photographed ONLY.



---

### #26 - Liquid Applicator (NP4961)

Liquid Applicator (NP4961), 13 Blu-Jet coulters, hydraulic wings, poly cone bottom tank, John Blue ground drive pump. Notes: Item Location: Tampa, KS 67483 Equipment Sold "AS IS, WHERE IS": All equipment/property is sold "AS IS, WHERE IS" with no warranty or guarantees, expressed or implied, No operational assessments or testing have been made by Del Peterson on this item, it has been photographed ONLY.



### #27 - GVM Liquid System (NP4963)

GVM Liquid System (NP4963), 1,100 gallon stainless steel liquid tank, 60' boom, stainless steel chemical inductor, pump, Banjo strainer. Notes: Running gear shown in pictures DOES NOT SELL with the liquid system. Item Location: Tampa, KS 67483 Equipment Sold "AS IS, WHERE IS": All equipment/property is sold "AS IS, WHERE IS" with no warranty or guarantees, expressed or implied, No operational assessments or testing have been made by Del Peterson on this item, it has been photographed ONLY.



### #28 - 1995 Freightliner Cab/Chassis (NP4962)

1995 Freightliner Cab/Chassis (NP4962), Cummins M11-330E diesel engine, Eaton Fuller 10 speed transmission, heat, air conditioning, Am/Fm cassette radio, air ride cab, tandem axle, spring suspension, single exhaust, single fuel tank, 295/75R22.5 tires, Unit #T95, GVWR 52,000lbs, shows 905,876 miles. Notes: This truck had an electrical fire and is currently a NON-RUNNER, but the engine is in working order. Please contact seller for more details. Item Location: Tampa, KS 67483 Equipment Sold "AS IS, WHERE IS": All equipment/property is sold "AS IS, WHERE IS" with no warranty or guarantees, expressed or implied, No operational assessments or testing have been made by Del Peterson on this item, it has been photographed ONLY.



### #29 - Fertilizer Tube Conveyor (NP4954)

Fertilizer Tube Conveyor (NP4954), 12" belt, portable, Baldor 10HP 3 phase electric motor, 230/460 volt, 1725 RPM, P205/70R15 tires (1 flat tire), with dry hopper. Notes: Item Location: Woodbine, KS 67492 Equipment Sold "AS IS, WHERE IS": All equipment/property is sold "AS IS, WHERE IS" with no warranty or guarantees, expressed or implied, No operational assessments or testing have been made by Del Peterson on this item, it has been photographed ONLY.



### #30 - Tyler Moonwalk Dry Spreader (NP4956)

Tyler Moonwalk Dry Spreader (NP4956), stainless steel, 8 ton capacity, tandem axle, flotation tires, single spinner, 540 PTO. Notes: Item Location: Herington, KS 67449 Equipment Sold "AS IS, WHERE IS": All equipment/property is sold "AS IS, WHERE IS" with no warranty or guarantees, expressed or implied, No operational assessments or testing have been made by Del Peterson on this item, it has been photographed ONLY.



### #30A - 2005 GMC Yukon XL (TR3482)

2005 GMC Yukon XL (TR3482), 4x4, gas engine, automatic transmission, heat, air conditioning, Am/Fm CD radio, MP3, power seats, Bose speakers, Cabelas floor mats, leather interior, shows 157,661 miles. Notes: Item is relisted due to insufficient funds. NO 3rd Row seat. Item Location: Fremont, NE 68025 Equipment Sold "AS IS, WHERE IS": All equipment/property is sold "AS IS, WHERE IS" with no warranty or guarantees, expressed or implied, No operational assessments or testing have been made by Del Peterson on this item, it has been photographed ONLY.



### #31 - Yale Forklift (NP4957)

Yale Forklift (NP4957), Model GP-030-UAS-085-P, LP gas, 3,000lb lift capacity, 5.00-6 rear tires, 6.50-10 front tires, forks, truck weight 5,830lbs, shows 9,205 hours. Notes: Item Location: Lincolnville, KS 66858 Equipment Sold "AS IS, WHERE IS": All equipment/property is sold "AS IS, WHERE IS" with no warranty or guarantees, expressed or implied, No operational assessments or testing have been made by Del Peterson on this item, it has been photographed ONLY.



### #32 - Peck Mfg. Co. Grain Auger (NP4953)

Peck Mfg. Co. Grain Auger (NP4953), Model 1004 71, approx. 71' length x 10" auger, hydraulic, swing hopper, portable, ST205/75D15 tires, excellent condition. Notes: Item Location: Chapman, KS 67431 Equipment Sold "AS IS, WHERE IS": All equipment/property is sold "AS IS, WHERE IS" with no warranty or guarantees, expressed or implied, No operational assessments or testing have been made by Del Peterson on this item, it has been photographed ONLY.



### #33 - (4) Firestone Floation Tires/Rims (NP4952)

(4) Firestone Floation Tires/Rims (NP4952), 650/75R32 tires, Radial All Traction DT, 10 bolt rim pattern. Notes: Item Location: Junction City, KS 66441 Equipment Sold "AS IS, WHERE IS": All equipment/property is sold "AS IS, WHERE IS" with no warranty or guarantees, expressed or implied, No operational assessments or testing have been made by Del Peterson on this item, it has been photographed ONLY.



### #34 - Aluminum Truck Flatbed (NP4964)

Aluminum Deck For Semi-Tractor (NP4964), approx. 6' wide, approx. 69.5" deep, battery hookups, deck for a semi-tractor. Notes: Item Location: Galva, KS 67443 Equipment Sold "AS IS, WHERE IS": All equipment/property is sold "AS IS, WHERE IS" with no warranty or guarantees, expressed or implied, No operational assessments or testing have been made by Del Peterson on this item, it has been photographed ONLY.





---

### #35 - Hiniker 1000 Cultivator (KMK258)

Hiniker 1000 Cultivator (KMK258), model 1000, 12 row, 22" cultivator. Notes: Very little use, very good condition. Item Location: Waseca, MN 56093 Equipment Sold "AS IS, WHERE IS": All equipment/property is sold "AS IS, WHERE IS" with no warranty or guarantees, expressed or implied, No operational assessments or testing have been made by Del Peterson on this item, it has been photographed ONLY.



---

### #35A - 2010 Suzuki SX4 AWD (TR3497)

2010 Suzuki SX4 AWD (TR3497), gas 4 cylinder engine, automatic, AWD, black cloth interior, hatchback rear door, CD, AM/FM radio, Heat/AC, power windows/locks/seats, dual temperature control, 71,737 miles. Notes: Cracked windshield. Item Location: Fremont, NE 68025 Equipment Sold "AS IS, WHERE IS": All equipment/property is sold "AS IS, WHERE IS" with no warranty or guarantees, expressed or implied, No operational assessments or testing have been made by Del Peterson on this item, it has been photographed ONLY.



---

### #36 - 2007 Sterling LT8500 18 Ton Feed Truck (EG239)

2007 Sterling LT8500 18 Ton Feed Truck (EG239), 10 speed Eaton transmission, Mercedes Benz, 70% rubber, Compartments 4,4,4,3,3, rear tag, shows 102956 miles. Notes: Very little use, very good condition. Item Location: Lester, IA 51242 Equipment Sold "AS IS, WHERE IS": All equipment/property is sold "AS IS, WHERE IS" with no warranty or guarantees, expressed or implied, No operational assessments or testing have been made by Del Peterson on this item, it has been photographed ONLY.



---

### #37 - KBH Applicator Unit #1893 (RMC004)

KBH Applicator Unit #1893 (RMC004), 5 knife applicator has SOME COULTERS NOT ALL, 500 gallon poly liquid tank, John Blue ground drive pump, manual fold wings. Notes: Has 1 flat tire, NEEDS hoses replaced. Item Location: Belzoni, MS 39038 Equipment Sold "AS IS, WHERE IS": All equipment/property is sold "AS IS, WHERE IS" with no warranty or guarantees, expressed or implied, No operational assessments or testing have been made by Del Peterson on this item, it has been photographed ONLY.



---

### #38 - KBH Applicator Unit #1882 (RMC005)

KBH Applicator Unit #1882 (RMC005), 7 knife applicator, 500 gallon poly liquid tank, John Blue ground drive pump, manual fold wings. Notes: Item Location: Belzoni, MS 39038 Equipment Sold "AS IS, WHERE IS": All equipment/property is sold "AS IS, WHERE IS" with no warranty or guarantees, expressed or implied, No operational assessments or testing have been made by Del Peterson on this item, it has been photographed ONLY.



---

### #39 - KBH Applicator Unit #1889 (RMC006)

KBH Applicator Unit #1889 (RMC006), 7 knife applicator, front coulters, 500 gallon poly liquid tank, John Blue ground drive pump, manual fold wings. Notes: Will need HOSES replaced. Item Location: Belzoni, MS 39038 Equipment Sold "AS IS, WHERE IS": All equipment/property is sold "AS IS, WHERE IS" with no warranty or guarantees, expressed or implied, No operational assessments or testing have been made by Del Peterson on this item, it has been photographed ONLY.



---

### #40 - 1989 Gaylean Killbrew Unit# 8744 (DR-5027)

1989 Gaylean Killbrew Unit# 8744 (DR-5027), tandem axle 4 compartment hydraulic tipper trailer, No POWER UNIT, 10.00-20 tires, Dayton wheels. Notes: Item Location: Iowa, LA 70647 Equipment Sold "AS IS, WHERE IS": All equipment/property is sold "AS IS, WHERE IS" with no warranty or guarantees, expressed or implied, No operational assessments or testing have been made by Del Peterson on this item, it has been photographed ONLY.



---

### #40A - 2008 Chevrolet Silverado C2500 Pickup (TR3493)

2008 Chevrolet Silverado C2500 Pickup (TR3493), 4x2, gas engine, automatic transmission, heat, air conditioning, Am/Fm radio, bed liner, tow hitch, shows 170,058 miles. Notes: Tick in the engine, Broken overhead light, Tire sensor is on, Dents in bumper and sides. Item Location: Fremont, NE 68025 Equipment Sold "AS IS, WHERE IS": All equipment/property is sold "AS IS, WHERE IS" with no warranty or guarantees, expressed or implied, No operational assessments or testing have been made by Del Peterson on this item, it has been photographed ONLY.



---

### #42 - 1997 Gaylean Killabrew Unit# 6920 (DR6352)

1997 Gaylean Killabrew Unit# 6920 (DR6352), 4 compartment hydraulic dry tipper trailer, Wisconsin gas engine, spring suspension, 11R-22.5 tires, Dayton wheels. Notes: Item Location: Lyons, GA 30436 Equipment Sold "AS IS, WHERE IS": All equipment/property is sold "AS IS, WHERE IS" with no warranty or guarantees, expressed or implied, No operational assessments or testing have been made by Del Peterson on this item, it has been photographed ONLY.



---

**#43 - 1990 Gaylean Killabrew Unit# 6919 (DR6353)**

1990 Gaylean Killabrew Unit# 6919 (DR6353), 4 compartment hydraulic dry tipper trailer, Wisconsin gas engine, spring suspension, rear poly rinse tank, 10.00-20 tires, Dayton wheels. Notes: Item Location: Lyons, GA 30436 Equipment Sold "AS IS, WHERE IS": All equipment/property is sold "AS IS, WHERE IS" with no warranty or guarantees, expressed or implied, No operational assessments or testing have been made by Del Peterson on this item, it has been photographed ONLY.



---

**#44 - 1993 Gaylean Killabrew Unit# 6915 (DR6354)**

1993 Gaylean Killabrew Unit# 6915 (DR6354), 4 compartment hydraulic dry tipper trailer, stainless steel bins, Wisconsin gas engine, spring suspension, 11R-22.5 tires, Dayton wheels. Notes: Trailer has NEW brake pads. Item Location: Lyons, GA 30436 Equipment Sold "AS IS, WHERE IS": All equipment/property is sold "AS IS, WHERE IS" with no warranty or guarantees, expressed or implied, No operational assessments or testing have been made by Del Peterson on this item, it has been photographed ONLY.



---

**#45 - 1991 Gaylean Killabrew Unit# 6918 (DR6355)**

1991 Gaylean Killabrew Unit# 6918 (DR6355), 4 compartment hydraulic dry tipper trailer, Wisconsin gas engine, spring suspension, 10.00-20 tires, Dayton wheels. Notes: Item Location: Lyons, GA 30436 Equipment Sold "AS IS, WHERE IS": All equipment/property is sold "AS IS, WHERE IS" with no warranty or guarantees, expressed or implied, No operational assessments or testing have been made by Del Peterson on this item, it has been photographed ONLY.



---

**#45A - 2006 Ford Five Hundred**

2006 Ford Five Hundred, AWD, 4 door, AM/FM CD player, gas engine, automatic transmission, grey cloth interior, 6 cylinder, 140,500 miles. Notes: Item Location: Fremont, NE 68025 Equipment Sold "AS IS, WHERE IS": All equipment/property is sold "AS IS, WHERE IS" with no warranty or guarantees, expressed or implied, No operational assessments or testing have been made by Del Peterson on this item, it has been photographed ONLY.



---

**#46 - KBH Applicator Unit #1887 (RMC008)**

KBH Applicator Unit #1887 (RMC008), 8 knife applicator, 500 gallon poly liquid tank, John Blue ground drive pump, manual fold wings. Notes: Will need HOSES replaced. Item Location: Belzoni, MS 39038 Equipment Sold "AS IS, WHERE IS": All equipment/property is sold "AS IS, WHERE IS" with no warranty or guarantees, expressed or implied, No operational assessments or testing have been made by Del Peterson on this item, it has been photographed ONLY.



---

**#47 - KBH Applicator Unit #1896 (RMC012)**

KBH Applicator Unit #1896 (RMC012), 7 knife applicator, coulters, 500 gallon poly liquid tank, John Blue ground drive pump, manual fold wings. Notes: Item Location: Belzoni, MS 39038 Equipment Sold "AS IS, WHERE IS": All equipment/property is sold "AS IS, WHERE IS" with no warranty or guarantees, expressed or implied, No operational assessments or testing have been made by Del Peterson on this item, it has been photographed ONLY.



---

**#48 - KBH Liquid Applicator Unit# 1196 (DR-4420)**

KBH Liquid Applicator Unit# 1196 (DR-4420), 500 gallon poly liquid tank, 8 knife injectors, ground drive pump, front folding wings. Notes: Item Location: Cleveland, MS 38732 Equipment Sold "AS IS, WHERE IS": All equipment/property is sold "AS IS, WHERE IS" with no warranty or guarantees, expressed or implied, No operational assessments or testing have been made by Del Peterson on this item, it has been photographed ONLY.



---

**#49 - KBH Liquid Applicator Unit# 1238 (DR-4422)**

KBH Liquid Applicator Unit# 1238 (DR-4422), 500 gallon poly liquid tank, 9 knife injectors, ground drive pump, front folding wings. Notes: Item Location: Cleveland, MS 38732 Equipment Sold "AS IS, WHERE IS": All equipment/property is sold "AS IS, WHERE IS" with no warranty or guarantees, expressed or implied, No operational assessments or testing have been made by Del Peterson on this item, it has been photographed ONLY.



---

**#50 - 1995 Gaylean Killabrew Unit# 6922 (DR6356)**

1995 Gaylean Killabrew Unit# 6922 (DR6356), 4 compartment hydraulic dry tipper trailer, stainless steel bins, Wisconsin gas engine, spring suspension, 11R-22.5 tires, Dayton wheels. Notes: Item Location: Lyons, GA 30436 Equipment Sold "AS IS, WHERE IS": All equipment/property is sold "AS IS, WHERE IS" with no warranty or guarantees, expressed or implied, No operational assessments or testing have been made by Del Peterson on this item, it has been photographed ONLY.



---

**#50A - 2005 Nissan Murano (TR3494)**

2005 Nissan Murano (TR3494), gas engine, automatic transmission, heat, air conditioning, Am/Fm CD radio, power windows, locks and seats, shows 139,465 miles. Notes: Cracked windshield. Item Location: Fremont, NE 68025 Equipment Sold "AS IS, WHERE IS": All equipment/property is sold "AS IS, WHERE IS" with no warranty or guarantees, expressed or implied, No operational assessments or testing have been made by Del Peterson on this item, it has been photographed ONLY.



---

**#51 - 1991 Freightliner FLD120 Unit# 6910 (DR6357)**

1991 Freightliner FLD120 Unit# 6910 (DR6357), Cummins diesel engine, 9 speed transmission, tandem axle full screw, day cab, engine brake, air conditioning, air slide 5th wheel plate, dual aluminum fuel tanks, AM/FM cassette radio, 11R-22.5 tires, Budd wheels. Notes: Item Location: Lyons, GA 30436 Equipment Sold "AS IS, WHERE IS": All equipment/property is sold "AS IS, WHERE IS" with no warranty or guarantees, expressed or implied, No operational assessments or testing have been made by Del Peterson on this item, it has been photographed ONLY.



---

**#52 - 1999 FL60 Unit# 6911 (DR6359)**

1999 FL60 Unit# 6911 (DR6359), Cat diesel engine, automatic transmission, single axle, air brakes, air conditioning, 12' steel stake bed body, 60" all swing side gates, cruise control, 10R22.5 tires, Notes: Item Location: Lyons, GA 30436 Equipment Sold "AS IS, WHERE IS": All equipment/property is sold "AS IS, WHERE IS" with no warranty or guarantees, expressed or implied, No operational assessments or testing have been made by Del Peterson on this item, it has been photographed ONLY.



---

**#53 - 1983 Hays Unit# 13259 (DR6360)**

1983 Hays Unit# 13259 (DR6360), 5000 gallon conical fiberglass liquid transport, baffles, tandem axle, Honda gas engine, 3X3 pump, front & rear fenders, 11R24.5 tires, Dayton wheels. Notes: Trailer was not used last year, was used the year before has no leaks. Item Location: Fitzgerald, GA 31750 Equipment Sold "AS IS, WHERE IS": All equipment/property is sold "AS IS, WHERE IS" with no warranty or guarantees, expressed or implied, No operational assessments or testing have been made by Del Peterson on this item, it has been photographed ONLY.



---

**#54 - 1989 Safeway Unit# 13258 (DR6361)**

1989 Safeway Unit# 13258 (DR6361), 5000 gallon conical fiberglass liquid transport, baffles, tandem axle, Honda gas engine, 3X3 pump, 295/75R22.5 tires, Dayton wheels. Notes: Trailer was not used last year, was used the year before has no leaks. Item Location: Fitzgerald, GA 31750 Equipment Sold "AS IS, WHERE IS": All equipment/property is sold "AS IS, WHERE IS" with no warranty or guarantees, expressed or implied, No operational assessments or testing have been made by Del Peterson on this item, it has been photographed ONLY.



---

**#55 - 1982 International 2275 Unit# 7820 (DR6373)**

1982 International 2275 Unit# 7820 (DR6373), tandem axle full screw, diesel engine, 10 speed transmission, 3200 gallon 2 compartment conical stainless steel liquid tank, air brakes, AM/FM cassette radio. Notes: Truck runs and drives locally, DOT is not current. Item Location: Crowley, LA 70526 Equipment Sold "AS IS, WHERE IS": All equipment/property is sold "AS IS, WHERE IS" with no warranty or guarantees, expressed or implied, No operational assessments or testing have been made by Del Peterson on this item, it has been photographed ONLY.



---

**#56 - 2008 Ford F450 Unit# 7818 (DR6372)**

2008 Ford F450 Unit# 7818 (DR6372), Power Stroke diesel engine, automatic transmission, 12' steel stake bed, 5th wheel ball, frame mount storage box, cruise control, air conditioning, shows 157,182 miles. Notes: Item Location: Crowley, LA 70526 Equipment Sold "AS IS, WHERE IS": All equipment/property is sold "AS IS, WHERE IS" with no warranty or guarantees, expressed or implied, No operational assessments or testing have been made by Del Peterson on this item, it has been photographed ONLY.



---

**#57 - 1995 International 4000 Series Tandem Truck (EG243)**

1995 International 4000 Series Tandem Truck (EG243), DT 466 engine, PTO, new battery, good tires, runs and drives, shows 424550 miles. Notes: Item Location: Tolono, IL 61880 Equipment Sold "AS IS, WHERE IS": All equipment/property is sold "AS IS, WHERE IS" with no warranty or guarantees, expressed or implied, No operational assessments or testing have been made by Del Peterson on this item, it has been photographed ONLY.



---

### #58 - 2011 Ford F150 XLT 4WD Super Cab (DL131)

2011 Ford F150 XLT 4WD Super Cab (DL131), 5.0L V8 FFV engine, 6-speed electronic automatic transmission, AM/FM, cd player, power windows and locks, P235/75R17 all-terrain BSW tires, 25% tread, air conditioning, heat, rear window defroster, reverse sensing system, trailer tow pkg, XLT convenience pkg, black platform running boards, daytime running lights, bedliner, shows 151875 miles, Unit #23721. Notes: No body work has been done. New brakes. All fluids have been changed, including oil and filter. Vehicle has been recently detailed. PLEASE ALLOW AT LEAST 60 DAYS FOR TITLE TRANSFER. Item Location: Mora, MN 55051 Equipment Sold "AS IS, WHERE IS": All equipment/property is sold "AS IS, WHERE IS" with no warranty or guarantees, expressed or implied, No operational assessments or testing have been made by Del Peterson on this item, it has been photographed ONLY.



---

### #59 - 2012 Terra Gator 8400 Dry Floater (NP4966)

2012 Terra Gator 8400 Dry Floater (NP4966), AGCO diesel engine, CVT transmission, heat, air conditioning, Am/Fm CD radio, deluxe leather heated and cooled seat, air ride cab, HID lighting, AirMax Precision 2 dry air flow system, twin bin variable rate 2 products, chain floor, 80' boom, (holds 15,000lb of Urea), electric Agri-Cover roll over tarp, 7 gallon fresh water tank, Michelin 1000/50R25 rear tires 80%, Goodyear 48x31.00R20 front tires 80%, Raven Viper Pro controller, Raven SmarTrax auto steering w/ 3D terrain compensation, RGI 600 lightbar, Phoenix 600 receiver & Raven Accuboom section control system, slingshot field hub, shows 3,149 hours. Notes: Item Location: Twin Valley, MN 56584 Equipment Sold "AS IS, WHERE IS": All equipment/property is sold "AS IS, WHERE IS" with no warranty or guarantees, expressed or implied, No operational assessments or testing have been made by Del Peterson on this item, it has been photographed ONLY.



---

### #60 - 2010 Spra-Coupe 4660 Sprayer (NP4975)

2010 Spra-Coupe 4660 Sprayer (NP4975), Perkins diesel engine, automatic transmission, heat, air conditioning, Am/Fm CD radio, cruise, 400 gallon poly liquid system, 60/80' boom, 3-way nozzle bodies, foam marker, 320/85R24 tires, Outback eDrive GPS assisted steering, Outback AutoMate Guidance GPS, Raven SCS460 controller, Outback S3 monitor, shows 1,288 hours. Notes: Item Location: Quinter, KS 67752 Equipment Sold "AS IS, WHERE IS": All equipment/property is sold "AS IS, WHERE IS" with no warranty or guarantees, expressed or implied, No operational assessments or testing have been made by Del Peterson on this item, it has been photographed ONLY.



---

### #60A - 2007 Chevrolet Suburban LTZ (TR3495)

2007 Chevrolet Suburban LTZ (TR3495), 4x4, gas engine, automatic transmission, heat, air conditioning, Am/Fm CD radio, aux, leather interior, 3rd row seating, split row bench, flex fuel, power windows/seats, heated seats, dual temperature control, automatic rear door, shows 267,845 miles. Notes: Minor rust (see pictures). Item Location: Fremont, NE 68025 Equipment Sold "AS IS, WHERE IS": All equipment/property is sold "AS IS, WHERE IS" with no warranty or guarantees, expressed or implied, No operational assessments or testing have been made by Del Peterson on this item, it has been photographed ONLY.



---

### #61 - 2009 Sprayer Trailer (NP4979)

2009 Sprayer Trailer (NP4979), tandem axle, spring suspension, Snyder 3,000 gallon poly flat bottom liquid tank, 30 gallon poly cone bottom inductor tank, (4) poly square liquid shuttles, (2) Flowserve electronic flow meters, Honda GX160 gas motor, Banjo pump, 385/65R22.5 tires, fold down ramps, Unit #573. Notes: Item Location: Quinter, KS 67752 Equipment Sold "AS IS, WHERE IS": All equipment/property is sold "AS IS, WHERE IS" with no warranty or guarantees, expressed or implied, No operational assessments or testing have been made by Del Peterson on this item, it has been photographed ONLY.



---

### #62 - Anhydrous Storage Tank (NP4970)

Anhydrous Storage Tank (NP4970), 1964 Cherokee Steel, Inc., 12,000 gallon capacity, 84 O.S. DIA, 573 SHELL THK, 328 HEAD THK, 542 LENGTH, data plate. Notes: This is being sold as a TANK & VALVE ONLY. This tank must be dismantled and removed by July 20, 2017, NO EXCEPTIONS. Dismantle, removal and transportation is at the expense, risk and liability of the buyer. Item Location: Montezuma, KS 67867 Equipment Sold "AS IS, WHERE IS": All equipment/property is sold "AS IS, WHERE IS" with no warranty or guarantees, expressed or implied, No operational assessments or testing have been made by Del Peterson on this item, it has been photographed ONLY.



---

### #63 - CaseIH Precision Disk & Precision Air Cart (NP4977)

CaseIH Precision Disk & Precision Air Cart (NP4977), CaseIH 40 Precision Disk, 3 section hydraulic fold, down pressure springs, gauge wheels, closing wheels, 31x13.50-15 tires, S/N YAS003660, CaseIH 3430 Precision Air Cart, 3 Bin, 460 Bushel Capacity (Tank 1 - 142, Tank 2 - 102, Tank 3 - 186), swing auger, 22.5Lx16.1 front tires, 30.5L-32 rear tires. Notes: Item Location: Scott City, KS 67871 Equipment Sold "AS IS, WHERE IS": All equipment/property is sold "AS IS, WHERE IS" with no warranty or guarantees, expressed or implied, No operational assessments or testing have been made by Del Peterson on this item, it has been photographed ONLY.





---

### #64 - SafeRack Safety Truck Loading Cage (NP4969)

SafeRack Safety Truck Loading Cage (NP4969), G4 series, aluminum construction. Notes: Item Location: Holcomb, KS 67851 Equipment Sold "AS IS, WHERE IS": All equipment/property is sold "AS IS, WHERE IS" with no warranty or guarantees, expressed or implied, No operational assessments or testing have been made by Del Peterson on this item, it has been photographed ONLY.



---

### #65 - SafeRack Safety Truck Loading Cage (NP4968)

SafeRack Safety Truck Loading Cage (NP4968), Model 10042740P, load capacity 500lbs, aluminum construction. Notes: Item Location: Holcomb, KS 67851 Equipment Sold "AS IS, WHERE IS": All equipment/property is sold "AS IS, WHERE IS" with no warranty or guarantees, expressed or implied, No operational assessments or testing have been made by Del Peterson on this item, it has been photographed ONLY.



---

### #66 - 2014 CaseIH Magnum 315 Tractor (NP4976)

2014 CaseIH Magnum 315 Tractor (NP4976), CaseIH FPT diesel engine (EfficientPower), deluxe cab, heat, air conditioning, Am/Fm radio, 380/85R34 front duals, 480/80R46 rear duals, 1000 PTO, 4 port hydraulics, 3 point, (18) 100lb front tractor weights, suspended front end, AFS Pro 700 monitor (S/N 13260830), shows 516 hours. Notes: Item Location: Scott City, KS 67871 Equipment Sold "AS IS, WHERE IS": All equipment/property is sold "AS IS, WHERE IS" with no warranty or guarantees, expressed or implied, No operational assessments or testing have been made by Del Peterson on this item, it has been photographed ONLY.



---

### #67 - Roskamp Roller Grinder (PZ6394)

Roskamp Roller Grinder (PZ6394), Roskamp 9x24 IFA converted roller-grinder, Worldwide 15 hp top right motor, Worldwide 20 hp bottom left motor, 2PB207 2 2/16 front & rear bearing. Notes: Item Location: Lena, IL 61048 Equipment Sold "AS IS, WHERE IS": All equipment/property is sold "AS IS, WHERE IS" with no warranty or guarantees, expressed or implied, No operational assessments or testing have been made by Del Peterson on this item, it has been photographed ONLY.



---

### #68 - USC LP800 Seed Treater (PZ6393)

USC LP800 Seed Treater (PZ6393), ApronMaxx, seed wheel, stainless steel mix tank, with extra Convey-All model CMTSS-52 stainless steel mix tank, control panel, control panel for seed wheel. Notes: In March, 2017 Farm Chem completely serviced this unit. Invoice of what they did is pictured. Item Location: Lena, IL 61048 Equipment Sold "AS IS, WHERE IS": All equipment/property is sold "AS IS, WHERE IS" with no warranty or guarantees, expressed or implied, No operational assessments or testing have been made by Del Peterson on this item, it has been photographed ONLY.



---

### #69 - 2010 KBH Dry Tender Trailer (NP4989)

2010 KBH Dry Tender Trailer (NP4989), 26 ton capacity, 32 ft. length, 2 compartment, hydraulic, vibrators, rear discharge auger, electric roll tarp, Deutz diesel engine, tandem axle, spring suspension, GVWR 70,000lbs, Unit #23588. Notes: NEW bearings and couplers on hydraulic drives. Item Location: Garden City, KS 67846 Equipment Sold "AS IS, WHERE IS": All equipment/property is sold "AS IS, WHERE IS" with no warranty or guarantees, expressed or implied, No operational assessments or testing have been made by Del Peterson on this item, it has been photographed ONLY.



---

### #70 - Anhydrous Storage Tank (NP4986)

Anhydrous Storage Tank (NP4986), 1954 Flint Steel Corporation, 5,987 gallon capacity, tank volume gauge, Diameter: 60-0, Length: 43-0, HEAD THK. .423, SHELL THK. .51, data plate, Nat'l Board #32875, S/N 32875, East Tank, TANK & VALVE ONLY. Notes: This item must be removed by July 31, 2017, NO EXCEPTIONS. Proof of insurance must be provided before the dismantle process can begin. Dismantle, removal and transportation is at the expense, risk and liability of the buyer. Item Location: West Point, NE 68788 Equipment Sold "AS IS, WHERE IS": All equipment/property is sold "AS IS, WHERE IS" with no warranty or guarantees, expressed or implied, No operational assessments or testing have been made by Del Peterson on this item, it has been photographed ONLY.



---

### #70A - 2008 Dodge Caravan SXT (TR3496)

2008 Dodge Caravan SXT (TR3496), gas engine, automatic transmission, heat, air conditioning, Am/Fm CD radio, back up camera, dual DVD player screens, remote, rear/side automatic doors, power windows, locks and mirrors, heated seats, stow and go seats, shows 86,262 miles. Notes: Item Location: Fremont, NE 68025 Equipment Sold "AS IS, WHERE IS": All equipment/property is sold "AS IS, WHERE IS" with no warranty or guarantees, expressed or implied, No operational assessments or testing have been made by Del Peterson on this item, it has been photographed ONLY.



---

### #71 - Anhydrous Storage Tank (NP4987)

Anhydrous Storage Tank (NP4987), 1954 Flint Steel Corporation, 5,987 gallon capacity, tank volume gauge, Diameter: 60-0, Length: 43-0, HEAD THK. .423, SHELL THK. .51, data plate, Nat'l Board #32876, S/N 32876, West Tank, TANK & VALVE ONLY. Notes: This item must be removed by July 31, 2017, NO EXCEPTIONS. Proof of insurance must be provided before the dismantle process can begin. Dismantle, removal and transportation is at the expense, risk and liability of the buyer. Item Location: West Point, NE 68788 Equipment Sold "AS IS, WHERE IS": All equipment/property is sold "AS IS, WHERE IS" with no warranty or guarantees, expressed or implied, No operational assessments or testing have been made by Del Peterson on this item, it has been photographed ONLY.



---

### #72 - Anhydrous Storage Tank (NP4988)

Anhydrous Storage Tank (NP4988), 1965 Cherokee Steel, Inc., 18,000 gallon capacity, tank volume gauge, O.S. DIA 105.5, SHELL THK. .750, HEAD THK. .420, data plate, S/N 5338, TANK & VALVE ONLY. Notes: This item must be removed by July 31, 2017, NO EXCEPTIONS. Proof of insurance must be provided before the dismantle process can begin. Dismantle, removal and transportation is at the expense, risk and liability of the buyer. Item Location: Bancroft, NE 68004 Equipment Sold "AS IS, WHERE IS": All equipment/property is sold "AS IS, WHERE IS" with no warranty or guarantees, expressed or implied, No operational assessments or testing have been made by Del Peterson on this item, it has been photographed ONLY.



---

### #73 - Corken Gas Compressor (NP4990)

Corken Gas Compressor (NP4990), Model 290K3FBA, Newman electric motor, 5HP, 3 phase, S/N RER22112. Notes: Item Location: Bancroft, NE 68004 Equipment Sold "AS IS, WHERE IS": All equipment/property is sold "AS IS, WHERE IS" with no warranty or guarantees, expressed or implied, No operational assessments or testing have been made by Del Peterson on this item, it has been photographed ONLY.



---

### #74 - 2008 Dodge Nitro (TR3388)

2008 Dodge Nitro (TR3388), gas engine, automatic transmission, 4x4, AM/FM CD player, MP3, Heat/AC, Stow away compartment in the back, cruise control, heated leather seats, power outlet in the back seat, 57,781 miles. Notes: Vehicle will not stay charged, needs new alternator and possibly a new battery, Power seat does work but outside portion is broken, and passenger mirror is cracked. Item Location: Fremont, NE 68025 Equipment Sold "AS IS, WHERE IS": All equipment/property is sold "AS IS, WHERE IS" with no warranty or guarantees, expressed or implied, No operational assessments or testing have been made by Del Peterson on this item, it has been photographed ONLY.



---

### #74A - 2008 GMC Yukon Denali (TR3497)

2008 GMC Yukon Denali (TR3497), gas engine, automatic transmission, heat/ac, AM/FM CD player, leather power/heated seats, AUX, steering wheel controls, sun roof, DVD player, 3rd row removable seating, 132,813 miles. Notes: Item Location: Fremont, NE 68025 Equipment Sold "AS IS, WHERE IS": All equipment/property is sold "AS IS, WHERE IS" with no warranty or guarantees, expressed or implied, No operational assessments or testing have been made by Del Peterson on this item, it has been photographed ONLY.



---

### #75 - Pickup Sprayer (PZ6461)

Pickup Sprayer (PZ6461) Pickup sprayer, 500 gallon poly tank, approx. 60' boom, RHS foam marker system, Honda GX240 gas engine. Notes: Contact seller about boom size. Estate of John Walker. Item Location: Gillespie, IL 62033 Equipment Sold "AS IS, WHERE IS": All equipment/property is sold "AS IS, WHERE IS" with no warranty or guarantees, expressed or implied, No operational assessments or testing have been made by Del Peterson on this item, it has been photographed ONLY.



---

### #76 - DMI Tool Bar (PZ6483)

DMI Tool Bar (PZ6483), DMI 11 knife conversion pull type tool bar, coulters, Hiniker cooler, hydraulic wings, 11L-15 flotation tires. Notes: Estate of John Walker. Item Location: Gillespie, IL 62033 Equipment Sold "AS IS, WHERE IS": All equipment/property is sold "AS IS, WHERE IS" with no warranty or guarantees, expressed or implied, No operational assessments or testing have been made by Del Peterson on this item, it has been photographed ONLY.



---

### #77 - 1995 CaseIH 2188 Combine (PZ6512)

1995 CaseIH 2188 Combine (PZ6512), Case 2188 Axial-Flow Combine, diesel engine, hydrostatic transmission, air conditioning, heat, Am/Fm radio, Ag Leader Yield monitor 2000, Alliance 30.5L-32 front tires, Good Year 18.4-26 rear tires, shows 4214 engine hours, 3332 separator hours. Notes: Estate of John Walker. Item Location: Gillespie, IL 62033 Equipment Sold "AS IS, WHERE IS": All equipment/property is sold "AS IS, WHERE IS" with no warranty or guarantees, expressed or implied, No operational assessments or testing have been made by Del Peterson on this item, it has been photographed ONLY.



---

**#78 - 1999 Case 9010B Excavator (PZ6497)**

1999 Case 9010B Excavator (PZ6497), Case 9010B Excavator, Case 4TA-390 100 hp diesel engine, hydrostatic transmission, cab, heat, Am/Fm radio, 24" pads, 40" bucket with teeth, shows 3387 hours. Notes: Estate of John Walker. Item Location: Gillespie, IL 62033 Equipment Sold "AS IS, WHERE IS": All equipment/property is sold "AS IS, WHERE IS" with no warranty or guarantees, expressed or implied, No operational assessments or testing have been made by Del Peterson on this item, it has been photographed ONLY.



---

**#79 - AMCO Ditcher (PZ6468)**

AMCO Ditcher (PZ6468), AMCO model PD2-18 ditcher. Notes: Estate of John Walker. Item Location: Gillespie, IL 62033 Equipment Sold "AS IS, WHERE IS": All equipment/property is sold "AS IS, WHERE IS" with no warranty or guarantees, expressed or implied, No operational assessments or testing have been made by Del Peterson on this item, it has been photographed ONLY.



---

**#80 - Frontier Blade (PZ6473)**

Frontier Blade (PZ6473), Frontier model RB2310 blade, 10', hydraulic turn & tilt. Notes: Estate of John Walker. Item Location: Gillespie, IL 62033 Equipment Sold "AS IS, WHERE IS": All equipment/property is sold "AS IS, WHERE IS" with no warranty or guarantees, expressed or implied, No operational assessments or testing have been made by Del Peterson on this item, it has been photographed ONLY.



---

**#81 - Arts-Way PM20 Feed Grinder (PZ6499)**

Arts-Way PM20 Feed Grinder (PZ6499), Arts-Way model FPS- PM20-0002, feed grinder, PTO, Weigh-Tronix model 715 digital scale, 10.00-15 flotation tires. Notes: Estate of John Walker. Item Location: Gillespie, IL 62033 Equipment Sold "AS IS, WHERE IS": All equipment/property is sold "AS IS, WHERE IS" with no warranty or guarantees, expressed or implied, No operational assessments or testing have been made by Del Peterson on this item, it has been photographed ONLY.



---

**#82 - Case 586E Forklift (PZ6490)**

Case 586E Forklift (PZ6490), diesel engine, 4 speed transmission, 4' forks, side shift, 16.9-24 front tires, 11L-16 rear tires. Notes: Estate of John Walker. Item Location: Gillespie, IL 62033 Equipment Sold "AS IS, WHERE IS": All equipment/property is sold "AS IS, WHERE IS" with no warranty or guarantees, expressed or implied, No operational assessments or testing have been made by Del Peterson on this item, it has been photographed ONLY.



---

**#83 - Frontier Pallet Forks (PZ6470)**

Frontier Pallet Forks (PZ6470), Frontier pallet forks, 4' forks. Notes: Estate of John Walker. Item Location: Gillespie, IL 62033 Equipment Sold "AS IS, WHERE IS": All equipment/property is sold "AS IS, WHERE IS" with no warranty or guarantees, expressed or implied, No operational assessments or testing have been made by Del Peterson on this item, it has been photographed ONLY.



---

**#84 - Frontier Pallet Forks (PZ6496)**

Frontier Pallet Forks (PZ6496), Frontier pallet forks, 4' forks. Notes: Estate of John Walker. Item Location: Gillespie, IL 62033 Equipment Sold "AS IS, WHERE IS": All equipment/property is sold "AS IS, WHERE IS" with no warranty or guarantees, expressed or implied, No operational assessments or testing have been made by Del Peterson on this item, it has been photographed ONLY.



---

**#85 - Westfield Grain Auger (PZ6482)**

Westfield Grain Auger (PZ6482), Westfield WR 80-31 grain auger, PTO, portable, ST225/75R15 tires. Notes: Estate of John Walker. Item Location: Gillespie, IL 62033 Equipment Sold "AS IS, WHERE IS": All equipment/property is sold "AS IS, WHERE IS" with no warranty or guarantees, expressed or implied, No operational assessments or testing have been made by Del Peterson on this item, it has been photographed ONLY.



---

**#86 - Brandt Grain Auger (PZ6489)**

Brandt Grain Auger (PZ6489), Brandt 835 grain auger, 30', portable, PTO. Notes: Bent auger, flat tires. Estate of John Walker. Item Location: Gillespie, IL 62033 Equipment Sold "AS IS, WHERE IS": All equipment/property is sold "AS IS, WHERE IS" with no warranty or guarantees, expressed or implied, No operational assessments or testing have been made by Del Peterson on this item, it has been photographed ONLY.



---

**#87 - Killbros Gravity Wagon (PZ6515)**

Killbros Gravity Wagon (PZ6515), Killbros gravity wagon, EZ trail gear, 11L-15 tires. Notes: Estate of John Walker. Item Location: Gillespie, IL 62033 Equipment Sold "AS IS, WHERE IS": All equipment/property is sold "AS IS, WHERE IS" with no warranty or guarantees, expressed or implied, No operational assessments or testing have been made by Del Peterson on this item, it has been photographed ONLY.



---

**#88 - GT 545XL Grain Dryer (PZ6506)**

GT 545XL Grain Dryer (PZ6506), GT 545XL portable grain dryer, ST205/75R15 tires. Notes: Estate of John Walker. Item Location: Gillespie, IL 62033 Equipment Sold "AS IS, WHERE IS": All equipment/property is sold "AS IS, WHERE IS" with no warranty or guarantees, expressed or implied, No operational assessments or testing have been made by Del Peterson on this item, it has been photographed ONLY.



---

**#89 - Flow EZ Gravity Wagon (PZ6478)**

Flow EZ Gravity Wagon (PZ6478), Flow EZ gravity wagon, EZ Trail 1074 gear, 12.5L-15 flotation tires. Notes: Estate of John Walker. Item Location: Gillespie, IL 62033 Equipment Sold "AS IS, WHERE IS": All equipment/property is sold "AS IS, WHERE IS" with no warranty or guarantees, expressed or implied, No operational assessments or testing have been made by Del Peterson on this item, it has been photographed ONLY.



---

**#90 - Gravity Wagon (PZ6479)**

Gravity Wagon (PZ6479), Gravity wagon, EZ Trail gear, 11L-15 flotation tires. Notes: Estate of John Walker. Item Location: Gillespie, IL 62033 Equipment Sold "AS IS, WHERE IS": All equipment/property is sold "AS IS, WHERE IS" with no warranty or guarantees, expressed or implied, No operational assessments or testing have been made by Del Peterson on this item, it has been photographed ONLY.



---

**#91 - Parker Gravity Wagon (PZ6480)**

Parker Gravity Wagon (PZ6480), Parker gravity wagon, 2 gate discharge, 16.5L-16.1 flotation tires. Notes: Estate of John Walker. Item Location: Gillespie, IL 62033 Equipment Sold "AS IS, WHERE IS": All equipment/property is sold "AS IS, WHERE IS" with no warranty or guarantees, expressed or implied, No operational assessments or testing have been made by Del Peterson on this item, it has been photographed ONLY.



---

**#92 - 2015 Brandt Grain Vac (PZ6498)**

2015 Brandt Grain Vac (PZ6498), 2015 Brandt 5200EX Grain Vac, PTO, straight & flex pipe, portable, ST205/75D15 tires, shows 87.9 hours. Notes: Estate of John Walker. Item Location: Gillespie, IL 62033 Equipment Sold "AS IS, WHERE IS": All equipment/property is sold "AS IS, WHERE IS" with no warranty or guarantees, expressed or implied, No operational assessments or testing have been made by Del Peterson on this item, it has been photographed ONLY.



---

**#93 - 2013 Brandt Grain Auger (PZ6502)**

2013 Brandt Grain Auger (PZ6502), 2013 Brandt 1070 grain auger, swing hopper, PTO, Portable, ST205/75D15 tires. Notes: Estate of John Walker. Item Location: Gillespie, IL 62033 Equipment Sold "AS IS, WHERE IS": All equipment/property is sold "AS IS, WHERE IS" with no warranty or guarantees, expressed or implied, No operational assessments or testing have been made by Del Peterson on this item, it has been photographed ONLY.



---

**#94 - EZ Trail Grain Cart (PZ6503)**

EZ Trail Grain Cart (PZ6503), EZ Trail model 500 grain cart, side discharge auger, PTO, 23.1-26 flotation tires. Notes: Estate of John Walker. Item Location: Gillespie, IL 62033 Equipment Sold "AS IS, WHERE IS": All equipment/property is sold "AS IS, WHERE IS" with no warranty or guarantees, expressed or implied, No operational assessments or testing have been made by Del Peterson on this item, it has been photographed ONLY.



---

**#95 - J&M Gravity Wagon (PZ6514)**

J&M Gravity Wagon (PZ6514), J&M 540-SD gravity wagon, ladder, brakes, lights, 3 - Good Year 425/65R22.5 tires, 1 - Michelin. Notes: Estate of John Walker. Item Location: Gillespie, IL 62033 Equipment Sold "AS IS, WHERE IS": All equipment/property is sold "AS IS, WHERE IS" with no warranty or guarantees, expressed or implied, No operational assessments or testing have been made by Del Peterson on this item, it has been photographed ONLY.





---

### #96 - Frontier Bale Spear (PZ6466)

Frontier Bale Spear (PZ6466), Frontier bale spear, Notes: Estate of John Walker. Item Location: Gillespie, IL 62033 Equipment Sold "AS IS, WHERE IS": All equipment/property is sold "AS IS, WHERE IS" with no warranty or guarantees, expressed or implied, No operational assessments or testing have been made by Del Peterson on this item, it has been photographed ONLY.



---

### #97 - New Holland Baler (PZ6459)

New Holland Baler (PZ6459), New Holland 575 baler, flotation tires. Notes: Estate of John Walker. Item Location: Gillespie, IL 62033 Equipment Sold "AS IS, WHERE IS": All equipment/property is sold "AS IS, WHERE IS" with no warranty or guarantees, expressed or implied, No operational assessments or testing have been made by Del Peterson on this item, it has been photographed ONLY.



---

### #98 - Hoelscher Bale Accumulator (PZ6460)

Hoelscher Bale Accumulator (PZ6460), Hoelscher model 1000, 10 bale accumulator. Notes: Estate of John Walker. Item Location: Gillespie, IL 62033 Equipment Sold "AS IS, WHERE IS": All equipment/property is sold "AS IS, WHERE IS" with no warranty or guarantees, expressed or implied, No operational assessments or testing have been made by Del Peterson on this item, it has been photographed ONLY.



---

### #99 - Bale Spear (PZ6467)

Bale Spear (PZ6467), Bale spear. Notes: Estate of John Walker. Item Location: Gillespie, IL 62033 Equipment Sold "AS IS, WHERE IS": All equipment/property is sold "AS IS, WHERE IS" with no warranty or guarantees, expressed or implied, No operational assessments or testing have been made by Del Peterson on this item, it has been photographed ONLY.



---

### #100 - Bale Spear (PZ6469)

Bale Spear (PZ6469), Bale spear. Notes: Estate of John Walker. Item Location: Gillespie, IL 62033 Equipment Sold "AS IS, WHERE IS": All equipment/property is sold "AS IS, WHERE IS" with no warranty or guarantees, expressed or implied, No operational assessments or testing have been made by Del Peterson on this item, it has been photographed ONLY.



---

### #101 - Unverferth Roundabout (PZ6452)

Unverferth Roundabout (PZ6452), Unverferth RA220 Roundabout. Notes: Estate of John Walker. Item Location: Gillespie, IL 62033 Equipment Sold "AS IS, WHERE IS": All equipment/property is sold "AS IS, WHERE IS" with no warranty or guarantees, expressed or implied, No operational assessments or testing have been made by Del Peterson on this item, it has been photographed ONLY.



---

### #102 - 1984 New Holland Baler (PZ6455)

1984 New Holland Baler (PZ6455), New Holland 849 auto wrap baler, flotation tires. Notes: Estate of John Walker. Item Location: Gillespie, IL 62033 Equipment Sold "AS IS, WHERE IS": All equipment/property is sold "AS IS, WHERE IS" with no warranty or guarantees, expressed or implied, No operational assessments or testing have been made by Del Peterson on this item, it has been photographed ONLY.



---

### #103 - Hoelscher Bale Claw (PZ6476)

Hoelscher Bale Claw (PZ6476), Hoelscher model 100 front mount bale claw, hydraulic. Notes: Estate of John Walker. Item Location: Gillespie, IL 62033 Equipment Sold "AS IS, WHERE IS": All equipment/property is sold "AS IS, WHERE IS" with no warranty or guarantees, expressed or implied, No operational assessments or testing have been made by Del Peterson on this item, it has been photographed ONLY.



---

### #104 - John Deere Rake (PZ6472)

John Deere Rake (PZ6472), John Deere 662, 5' hay rake. Notes: Estate of John Walker. Item Location: Gillespie, IL 62033 Equipment Sold "AS IS, WHERE IS": All equipment/property is sold "AS IS, WHERE IS" with no warranty or guarantees, expressed or implied, No operational assessments or testing have been made by Del Peterson on this item, it has been photographed ONLY.



---

### #105 - Hoelscher Bale Claw (PZ6477)

Hoelscher Bale Claw (PZ6477), Hoelscher model 100 front mount bale claw, hydraulic. Notes: Estate of John Walker. Item Location: Gillespie, IL 62033 Equipment Sold "AS IS, WHERE IS": All equipment/property is sold "AS IS, WHERE IS" with no warranty or guarantees, expressed or implied, No operational assessments or testing have been made by Del Peterson on this item, it has been photographed ONLY.



---

### #106 - Frontier Bale Spear (PZ6491)

Frontier Bale Spear (PZ6491), Frontier bale spear. Notes: Estate of John Walker. Item Location: Gillespie, IL 62033 Equipment Sold "AS IS, WHERE IS": All equipment/property is sold "AS IS, WHERE IS" with no warranty or guarantees, expressed or implied, No operational assessments or testing have been made by Del Peterson on this item, it has been photographed ONLY.



---

### #107 - New Holland 415 Mower (PZ6505)

New Holland 415 Mower (PZ6505), New Holland 415 disc mower, PTO, 11L-14 flotation tires. Notes: Estate of John Walker. Item Location: Gillespie, IL 62033 Equipment Sold "AS IS, WHERE IS": All equipment/property is sold "AS IS, WHERE IS" with no warranty or guarantees, expressed or implied, No operational assessments or testing have been made by Del Peterson on this item, it has been photographed ONLY.



---

### #108 - 1990 CaseIH 1020 Head (PZ6474)

1990 CaseIH 1020 Head (PZ6474), CaseIH 1020 head, 25'. Notes: Missing parts. Estate of John Walker. Item Location: Gillespie, IL 62033 Equipment Sold "AS IS, WHERE IS": All equipment/property is sold "AS IS, WHERE IS" with no warranty or guarantees, expressed or implied, No operational assessments or testing have been made by Del Peterson on this item, it has been photographed ONLY.



---

### #109 - 1995 CaseIH 1020 Head (PZ6511)

1995 CaseIH 1020 Head (PZ6511), CaseIH 1020 head, 30'. Notes: Head cart NOT included. Estate of John Walker. Item Location: Gillespie, IL 62033 Equipment Sold "AS IS, WHERE IS": All equipment/property is sold "AS IS, WHERE IS" with no warranty or guarantees, expressed or implied, No operational assessments or testing have been made by Del Peterson on this item, it has been photographed ONLY.



---

### #110 - 1998 CaseIH 1063 Corn Head (PZ6513)

1998 CaseIH 1063 Corn Head (PZ6513), CaseIH 1063, 6 row corn head. Notes: Estate of John Walker. Item Location: Gillespie, IL 62033 Equipment Sold "AS IS, WHERE IS": All equipment/property is sold "AS IS, WHERE IS" with no warranty or guarantees, expressed or implied, No operational assessments or testing have been made by Del Peterson on this item, it has been photographed ONLY.



---

### #111 - EZ Trail Cart (PZ6516)

EZ Trail Cart (PZ6516), EZ Trail 672 head cart, 20.5x8.0-10 tires. Notes: No Title, bean Head NOT included. Estate of John Walker. Item Location: Gillespie, IL 62033 Equipment Sold "AS IS, WHERE IS": All equipment/property is sold "AS IS, WHERE IS" with no warranty or guarantees, expressed or implied, No operational assessments or testing have been made by Del Peterson on this item, it has been photographed ONLY.



---

### #112 - Caterpillar 963 Track Loader (PZ6462)

Caterpillar 963 Track Loader (PZ6462), Caterpillar 963 dozer, 3304 Cat diesel engine, hydrostatic transmission, ROPS canopy, 21" pads, 8' bucket with teeth, shows 16,318 hours. Notes: Estate of John Walker. Item Location: Gillespie, IL 62033 Equipment Sold "AS IS, WHERE IS": All equipment/property is sold "AS IS, WHERE IS" with no warranty or guarantees, expressed or implied, No operational assessments or testing have been made by Del Peterson on this item, it has been photographed ONLY.



---

### #113 - Unverferth Better Built 4250 Tank (PZ6500)

Unverferth Better Built 4250 Tank (PZ6500), Unverferth Better Built 4250 manure tank, PTO, 23.1-26 tires, S/N D47590100, with 4 coulter liquid injection tool, double disc sealers. Notes: Estate of John Walker. Item Location: Gillespie, IL 62033 Equipment Sold "AS IS, WHERE IS": All equipment/property is sold "AS IS, WHERE IS" with no warranty or guarantees, expressed or implied, No operational assessments or testing have been made by Del Peterson on this item, it has been photographed ONLY.



---

### #114 - John Deere Mower (PZ6487)

John Deere Mower (PZ6487), John Deere Z445 Zero Turn mower, gas engine, 54" deck, 13x5.00-6 front tires, 22x9.50-10 rear tires, shows 65 hours. Notes: Estate of John Walker. Item Location: Gillespie, IL 62033 Equipment Sold "AS IS, WHERE IS": All equipment/property is sold "AS IS, WHERE IS" with no warranty or guarantees, expressed or implied, No operational assessments or testing have been made by Del Peterson on this item, it has been photographed ONLY.



---

### #115 - John Deere Mower (PZ6486)

John Deere Mower (PZ6486), John Deere Z445 Zero Turn mower, gas engine, 54" deck, 13x5.00-6 front tires, 22x9.50-10 rear tires, shows 111 hours. Notes: Estate of John Walker. Unable to get it started. Call Chad for more information. Item Location: Gillespie, IL 62033 Equipment Sold "AS IS, WHERE IS": All equipment/property is sold "AS IS, WHERE IS" with no warranty or guarantees, expressed or implied, No operational assessments or testing have been made by Del Peterson on this item, it has been photographed ONLY.



---

### #116 - John Deere Mower (PZ6507)

John Deere Mower (PZ6507), John Deere Z445 Zero Turn mower, gas engine, 54" deck, 13x5.00-6 front tires, 22x9.50-10 rear tires, shows 201 hours. Notes: Estate of John Walker. Item Location: Gillespie, IL 62033 Equipment Sold "AS IS, WHERE IS": All equipment/property is sold "AS IS, WHERE IS" with no warranty or guarantees, expressed or implied, No operational assessments or testing have been made by Del Peterson on this item, it has been photographed ONLY.



---

### #117 - Bush Hog Mower (PZ6453)

Bush Hog Mower (PZ6453), Bush Hog model 70611, rotary cutter. Notes: PTO is broke. Estate of John Walker. Item Location: Gillespie, IL 62033 Equipment Sold "AS IS, WHERE IS": All equipment/property is sold "AS IS, WHERE IS" with no warranty or guarantees, expressed or implied, No operational assessments or testing have been made by Del Peterson on this item, it has been photographed ONLY.



---

### #118 - Tye Grain Drill (PZ6457)

Tye Grain Drill (PZ6457), Tye Series V model 114-4360 15' grain drill, 9.5L-15 flotation tires, S/N G-5-1347-8-V, Tye model 304-465 no-till caddy, 12.5L-15 flotation tires. Notes: Estate of John Walker. Item Location: Gillespie, IL 62033 Equipment Sold "AS IS, WHERE IS": All equipment/property is sold "AS IS, WHERE IS" with no warranty or guarantees, expressed or implied, No operational assessments or testing have been made by Del Peterson on this item, it has been photographed ONLY.



---

### #119 - John Deere 7000 Planter (PZ6454)

John Deere 7000 Planter (PZ6454), John Deere 7000, 6 row planter, flotation tires. Notes: Estate of John Walker. Item Location: Gillespie, IL 62033 Equipment Sold "AS IS, WHERE IS": All equipment/property is sold "AS IS, WHERE IS" with no warranty or guarantees, expressed or implied, No operational assessments or testing have been made by Del Peterson on this item, it has been photographed ONLY.



---

### #120 - IHC 510 Drill (PZ6471)

IHC 510 Drill (PZ6471), International 510 drill. Notes: Blown tire. Estate of John Walker. Item Location: Gillespie, IL 62033 Equipment Sold "AS IS, WHERE IS": All equipment/property is sold "AS IS, WHERE IS" with no warranty or guarantees, expressed or implied, No operational assessments or testing have been made by Del Peterson on this item, it has been photographed ONLY.



---

### #121 - EZ Trail Seed Tender (PZ6481)

EZ Trail Seed Tender (PZ6481), EZ trailer model 3400 seed tender, side discharge auger, hydraulic, EZ trail 1074 gear, 12.5L-15 flotation tires. Notes: Estate of John Walker. Item Location: Gillespie, IL 62033 Equipment Sold "AS IS, WHERE IS": All equipment/property is sold "AS IS, WHERE IS" with no warranty or guarantees, expressed or implied, No operational assessments or testing have been made by Del Peterson on this item, it has been photographed ONLY.



---

### #122 - Garfield Pull Type Scraper (PZ6451)

Garfield Pull Type Scraper (PZ6451), Garfield 550 pull type scraper, flotation tire. Notes: Estate of John Walker. Item Location: Gillespie, IL 62033 Equipment Sold "AS IS, WHERE IS": All equipment/property is sold "AS IS, WHERE IS" with no warranty or guarantees, expressed or implied, No operational assessments or testing have been made by Del Peterson on this item, it has been photographed ONLY.



---

### #123 - M&W Rotary Hoe (PZ6475)

M&W Rotary Hoe (PZ6475), M&W model 1815 rotary hoe. Notes: Estate of John Walker. Item Location: Gillespie, IL 62033 Equipment Sold "AS IS, WHERE IS": All equipment/property is sold "AS IS, WHERE IS" with no warranty or guarantees, expressed or implied, No operational assessments or testing have been made by Del Peterson on this item, it has been photographed ONLY.



---

### #124 - McFarlane SPR1040-5 Tool (PZ6504)

McFarlane SPR1040-5 Tool (PZ6504), McFarlane SPR1040-5 tillage tool, hydraulic fold, 11L-15 flotation tires. Notes: Estate of John Walker. Item Location: Gillespie, IL 62033 Equipment Sold "AS IS, WHERE IS": All equipment/property is sold "AS IS, WHERE IS" with no warranty or guarantees, expressed or implied, No operational assessments or testing have been made by Del Peterson on this item, it has been photographed ONLY.



---

### #125 - Farmall 560 Tractor (PZ6492)

Farmall 560 Tractor (PZ6492), Farmall 560 narrow front tractor, diesel engine, 5 speed transmission, radio, PTO, 6.00-16 front tires, 15.5-38 rear tires. Notes: NON Runner. Estate of John Walker Item Location: Gillespie, IL 62033 Equipment Sold "AS IS, WHERE IS": All equipment/property is sold "AS IS, WHERE IS" with no warranty or guarantees, expressed or implied, No operational assessments or testing have been made by Del Peterson on this item, it has been photographed ONLY.



---

### #126 - John Deere 4440 Tractor (PZ6484)

John Deere 4440 Tractor (PZ6484), John Deere 4440 tractor, diesel engine, air conditioning, heat, Am/Fm radio, PTO, 2 port hydraulics, 12 - 47KG weights, 11.00-16 front tires, 18.4-38 rear tires, shows 9888 hours. Notes: Estate of John Walker Item Location: Gillespie, IL 62033 Equipment Sold "AS IS, WHERE IS": All equipment/property is sold "AS IS, WHERE IS" with no warranty or guarantees, expressed or implied, No operational assessments or testing have been made by Del Peterson on this item, it has been photographed ONLY.



---

### #127 - 1997 John Deere 9400 Tractor (PZ6509)

1997 John Deere 9400 Tractor (PZ6509), diesel engine, transmission, air conditioning, heat, Am/Fm radio, 3 port hydraulics, Firestone 520/85R42 dual tires, shows 7046 hours. Notes: Estate of John Walker Item Location: Gillespie, IL 62033 Equipment Sold "AS IS, WHERE IS": All equipment/property is sold "AS IS, WHERE IS" with no warranty or guarantees, expressed or implied, No operational assessments or testing have been made by Del Peterson on this item, it has been photographed ONLY.



---

### #128 - 2012 John Deere 5075E Tractor/Loader (PZ6494)

2012 John Deere 5075E Tractor/Loader (PZ6494), diesel engine, transmission, PTO, hydraulics, 5'7" bucket, with John Deere 553 loader, S/N 1P00553XTCX025491, 9.5-24 front tires, Good Year 16.9-28 rear tires, shows 728 hours. Notes: Estate of John Walker Item Location: Gillespie, IL 62033 Equipment Sold "AS IS, WHERE IS": All equipment/property is sold "AS IS, WHERE IS" with no warranty or guarantees, expressed or implied, No operational assessments or testing have been made by Del Peterson on this item, it has been photographed ONLY.



---

### #129 - 2010 John Deere 5075E Tractor/Loader (PZ6493)

2010 John Deere 5075E Tractor/Loader (PZ6493), diesel engine, 3 speed transmission, PTO, hydraulics, 5'7" bucket, with John Deere 553 loader, S/N W00553X005681, 9.5-24 front tires, Good Year 16.9-28 rear tires, shows 2078 hours. Notes: Estate of John Walker Item Location: Gillespie, IL 62033 Equipment Sold "AS IS, WHERE IS": All equipment/property is sold "AS IS, WHERE IS" with no warranty or guarantees, expressed or implied, No operational assessments or testing have been made by Del Peterson on this item, it has been photographed ONLY.



---

### #130 - Katolight Generator (PZ6456)

Katolight Generator (PZ6456), Katolight model KLM-25-540 generator, S/N MRP0180158-0211, portable, ST175/80D13 tires. Notes: Estate of John Walker Item Location: Gillespie, IL 62033 Equipment Sold "AS IS, WHERE IS": All equipment/property is sold "AS IS, WHERE IS" with no warranty or guarantees, expressed or implied, No operational assessments or testing have been made by Del Peterson on this item, it has been photographed ONLY.



---

### #131 - Katolight Generator (PZ6458)

Katolight Generator (PZ6458), Katolight model KLM1-25-540 generator, S/N 689557-0707, portable, ST175/80D-13 tires. Notes: Estate of John Walker Item Location: Gillespie, IL 62033 Equipment Sold "AS IS, WHERE IS": All equipment/property is sold "AS IS, WHERE IS" with no warranty or guarantees, expressed or implied, No operational assessments or testing have been made by Del Peterson on this item, it has been photographed ONLY.



---

### #132 - JM ATV Sprayer (PZ6485)

JM ATV Sprayer (PZ6485), JM Innovations ATV sprayer, 150 gallon poly tank, approx. 45' boom, foam marker, poly foam marker tank, Honda 5.5 gas engine, pump, tandem axle, AT25x12-8 tires. Notes: Item Location: Gillespie, IL 62033 Equipment Sold "AS IS, WHERE IS": All equipment/property is sold "AS IS, WHERE IS" with no warranty or guarantees, expressed or implied, No operational assessments or testing have been made by Del Peterson on this item, it has been photographed ONLY.





### #133 - Rhino Blade (PZ6448)

Rhino Blade (PZ6448), Rhino 8' blade. Notes: Item Location: Gillespie, IL 62033 Equipment Sold "AS IS, WHERE IS": All equipment/property is sold "AS IS, WHERE IS" with no warranty or guarantees, expressed or implied, No operational assessments or testing have been made by Del Peterson on this item, it has been photographed ONLY.



### #134 - Bush Hog Blade (PZ6449)

Bush Hog Blade (PZ6449), Bush Hog model 35-06 blade. Notes: Item Location: Gillespie, IL 62033 Equipment Sold "AS IS, WHERE IS": All equipment/property is sold "AS IS, WHERE IS" with no warranty or guarantees, expressed or implied, No operational assessments or testing have been made by Del Peterson on this item, it has been photographed ONLY.



### #135 - Servis Blade (PZ6465)

Servis Blade (PZ6465), Servis model R900 blade. Notes: Item Location: Gillespie, IL 62033 Equipment Sold "AS IS, WHERE IS": All equipment/property is sold "AS IS, WHERE IS" with no warranty or guarantees, expressed or implied, No operational assessments or testing have been made by Del Peterson on this item, it has been photographed ONLY.



### #136 - New Holland 258 Hay Rake (PZ6463)

New Holland 258 Hay Rake (PZ6463), New Holland 258 Rolabar hay rake, 5.00-15 tires. Notes: Item Location: Gillespie, IL 62033 Equipment Sold "AS IS, WHERE IS": All equipment/property is sold "AS IS, WHERE IS" with no warranty or guarantees, expressed or implied, No operational assessments or testing have been made by Del Peterson on this item, it has been photographed ONLY.



### #137 - Bush Hog Mower (PZ6450)

Bush Hog Mower (PZ6450), Bush Hog model SQ60R-4 mower, PTO, 3-point. Notes: Item Location: Gillespie, IL 62033 Equipment Sold "AS IS, WHERE IS": All equipment/property is sold "AS IS, WHERE IS" with no warranty or guarantees, expressed or implied, No operational assessments or testing have been made by Del Peterson on this item, it has been photographed ONLY.



### #138 - Bush Hog Mower (PZ6488)

Bush Hog Mower (PZ6488), Bush Hog model RDTH72 mower, PTO, 3-point. Notes: Item Location: Gillespie, IL 62033 Equipment Sold "AS IS, WHERE IS": All equipment/property is sold "AS IS, WHERE IS" with no warranty or guarantees, expressed or implied, No operational assessments or testing have been made by Del Peterson on this item, it has been photographed ONLY.



### #139 - John Deere 1780 Planter (PZ6501)

John Deere 1780 Planter (PZ6501), John Deere 1780 MaxEmerge 2 planter, 12/23, markers. Notes: Item Location: Gillespie, IL 62033 Equipment Sold "AS IS, WHERE IS": All equipment/property is sold "AS IS, WHERE IS" with no warranty or guarantees, expressed or implied, No operational assessments or testing have been made by Del Peterson on this item, it has been photographed ONLY.



### #140 - Sunflower 5034-29 Cultivator (PZ6464)

Sunflower 5034-29 Cultivator (PZ6464), Sunflower 5034-29 cultivator, 30', C shank, hydraulic wings, walking tandems, 11L-15 flotation tires. Notes: Item Location: Gillespie, IL 62033 Equipment Sold "AS IS, WHERE IS": All equipment/property is sold "AS IS, WHERE IS" with no warranty or guarantees, expressed or implied, No operational assessments or testing have been made by Del Peterson on this item, it has been photographed ONLY.



### #141 - 1988 John Deere 4850 Tractor (PZ6495)

1988 John Deere 4850 Tractor (PZ6495), MFWD, diesel engine, air conditioning, heat, Am/Fm radio, PTO, 3 port hydraulics, BFGoodrich 16.9R28 front tires, Firestone 18.4R42 rear dual tires, shows 9265 hours. Notes: Item Location: Gillespie, IL 62033 Equipment Sold "AS IS, WHERE IS": All equipment/property is sold "AS IS, WHERE IS" with no warranty or guarantees, expressed or implied, No operational assessments or testing have been made by Del Peterson on this item, it has been photographed ONLY.



---

### #142 - 1983 John Deere 4650 Tractor (PZ6510)

1983 John Deere 4650 Tractor (PZ6510), diesel engine, air conditioning, heat, Am/Fm radio, PTO, 3 port hydraulics, 12-47 KG front weights, Firestone 14L-16.1 front tires, Good Year 18.4R42 rear dual tires. Notes: This tractor needs a compressor. Item Location: Gillespie, IL 62033 Equipment Sold "AS IS, WHERE IS": All equipment/property is sold "AS IS, WHERE IS" with no warranty or guarantees, expressed or implied, No operational assessments or testing have been made by Del Peterson on this item, it has been photographed ONLY.



---

### #143 - Ford 1920 SSS Tractor/Loader (PZ6508)

Ford 1920 SSS Tractor/Loader (PZ6508), diesel engine, 4 speed transmission, PTO, 8-16 front tires, 14.9-24 rear tires, with Ford model 7108 loader, S/N YL14329, 5'7" bucket, shows 1672 hours. Notes: Item Location: Gillespie, IL 62033 Equipment Sold "AS IS, WHERE IS": All equipment/property is sold "AS IS, WHERE IS" with no warranty or guarantees, expressed or implied, No operational assessments or testing have been made by Del Peterson on this item, it has been photographed ONLY.



---

### #144 - 2014 24 row Soil Warrior (TR3488)

2014 24 row Soil Warrior (TR3488), Green Star three product dry rate controller, Lots of extra parts including an air compressor, Approximately 18000 acres. Notes: Item Location: Huron, SD 57350 Equipment Sold "AS IS, WHERE IS": All equipment/property is sold "AS IS, WHERE IS" with no warranty or guarantees, expressed or implied, No operational assessments or testing have been made by Del Peterson on this item, it has been photographed ONLY.



---

### #145 - 1965 Master NH3 Storage Tank (PZ6518)

1965 Master NH3 Storage Tank (PZ6518), 1965 Master 18,000 gallon NH3 storage tank, steel saddles, Magnetel tank volume gauge, tank & valve only, data plate, Notes: This tank must be removed by August 31st, 2017 with NO exceptions. Dismantle, removal and transportation is at the expense, risk and liability of the buyer. Item Location: Iuka, IL 62849 Equipment Sold "AS IS, WHERE IS": All equipment/property is sold "AS IS, WHERE IS" with no warranty or guarantees, expressed or implied, No operational assessments or testing have been made by Del Peterson on this item, it has been photographed ONLY.



---

### #146 - Flotation Tires (PZ6383)

Flotation Tires (PZ6383), 4 - Good Year Optitrac DT818, 650/65R38 flotation tires & rims. Notes: Item Location: Baileyville, IL 61007 Equipment Sold "AS IS, WHERE IS": All equipment/property is sold "AS IS, WHERE IS" with no warranty or guarantees, expressed or implied, No operational assessments or testing have been made by Del Peterson on this item, it has been photographed ONLY.



---

### #147 - New Tires (PZ6368)

New Tires (PZ6368), 5 - 4.80/4.00-8 tires. Notes: Item Location: Baileyville, IL 61007 Equipment Sold "AS IS, WHERE IS": All equipment/property is sold "AS IS, WHERE IS" with no warranty or guarantees, expressed or implied, No operational assessments or testing have been made by Del Peterson on this item, it has been photographed ONLY.



---

### #148 - Tires (PZ6369)

Tires (PZ6369), 3 - tires (1 - 5.30/4.50-6, 1 - 4.10/3.50-6, 1 - 4.00-9SL). Notes: Item Location: Baileyville, IL 61007 Equipment Sold "AS IS, WHERE IS": All equipment/property is sold "AS IS, WHERE IS" with no warranty or guarantees, expressed or implied, No operational assessments or testing have been made by Del Peterson on this item, it has been photographed ONLY.



---

### #149 - Tires (PZ6370)

Tires (PZ6370), 2 - tires (1 - 21x12-8, 1 - 22.5X10.00-8). Notes: Item Location: Baileyville, IL 61007 Equipment Sold "AS IS, WHERE IS": All equipment/property is sold "AS IS, WHERE IS" with no warranty or guarantees, expressed or implied, No operational assessments or testing have been made by Del Peterson on this item, it has been photographed ONLY.



---

### #150 - New Inner Tubes (PZ6358)

New Inner Tubes (PZ6358), 14 - 12R16.5 inner tubes. Notes: Item Location: Baileyville, IL 61007 Equipment Sold "AS IS, WHERE IS": All equipment/property is sold "AS IS, WHERE IS" with no warranty or guarantees, expressed or implied, No operational assessments or testing have been made by Del Peterson on this item, it has been photographed ONLY.



### #151 - New Inner Tubes (PZ6359)

New Inner Tubes (PZ6359), 14 - 11LR14 inner tubes. Notes: Item Location: Baileyville, IL 61007 Equipment Sold "AS IS, WHERE IS": All equipment/property is sold "AS IS, WHERE IS" with no warranty or guarantees, expressed or implied, No operational assessments or testing have been made by Del Peterson on this item, it has been photographed ONLY.



### #152 - New Inner Tubes (PZ6360)

New Inner Tubes (PZ6360), 7 - 9.00-20 inner tubes. Notes: Item Location: Baileyville, IL 61007 Equipment Sold "AS IS, WHERE IS": All equipment/property is sold "AS IS, WHERE IS" with no warranty or guarantees, expressed or implied, No operational assessments or testing have been made by Del Peterson on this item, it has been photographed ONLY.



### #153 - New Inner Tubes (PZ6361)

New Inner Tubes (PZ6361), 2 - Firestone 13.50R16.5LR16.1 inner tubes. Notes: Item Location: Baileyville, IL 61007 Equipment Sold "AS IS, WHERE IS": All equipment/property is sold "AS IS, WHERE IS" with no warranty or guarantees, expressed or implied, No operational assessments or testing have been made by Del Peterson on this item, it has been photographed ONLY.



### #154 - 1965 NH3 Storage Tank (PZ6519)

1965 NH3 Storage Tank (PZ6519), 1965 12,000 gallon NH3 storage tank, steel saddles, tank volume gauge, tank & valve only, data plate. Notes: This tank must be removed by August 31st, 2017 with NO exceptions. Dismantle, removal and transportation is at the expense, risk and liability of the buyer. Item Location: Iuka, IL 62849 Equipment Sold "AS IS, WHERE IS": All equipment/property is sold "AS IS, WHERE IS" with no warranty or guarantees, expressed or implied, No operational assessments or testing have been made by Del Peterson on this item, it has been photographed ONLY.



### #155 - New Inner Tubes (PZ6362)

New Inner Tubes (PZ6362), 15 - MR14/15 inner tubes. Notes: Item Location: Baileyville, IL 61007 Equipment Sold "AS IS, WHERE IS": All equipment/property is sold "AS IS, WHERE IS" with no warranty or guarantees, expressed or implied, No operational assessments or testing have been made by Del Peterson on this item, it has been photographed ONLY.



### #156 - New Inner Tubes (PZ6363)

New Inner Tubes (PZ6363), 8 - 7.5L/9.5LR14/15 inner tubes. Notes: Item Location: Baileyville, IL 61007 Equipment Sold "AS IS, WHERE IS": All equipment/property is sold "AS IS, WHERE IS" with no warranty or guarantees, expressed or implied, No operational assessments or testing have been made by Del Peterson on this item, it has been photographed ONLY.



### #157 - New Inner Tubes (PZ6364)

New Inner Tubes (PZ6364), 8 - GR/KR16 inner tubes. Notes: Item Location: Baileyville, IL 61007 Equipment Sold "AS IS, WHERE IS": All equipment/property is sold "AS IS, WHERE IS" with no warranty or guarantees, expressed or implied, No operational assessments or testing have been made by Del Peterson on this item, it has been photographed ONLY.



### #158 - New Inner Tubes (PZ6365)

New Inner Tubes (PZ6365), 20 - GR/KjR16 inner tubes. Notes: Item Location: Baileyville, IL 61007 Equipment Sold "AS IS, WHERE IS": All equipment/property is sold "AS IS, WHERE IS" with no warranty or guarantees, expressed or implied, No operational assessments or testing have been made by Del Peterson on this item, it has been photographed ONLY.



### #159 - New Inner Tubes (PZ6366)

New Inner Tubes (PZ6366), 2 - 16.9/18.4R28 inner tubes. Notes: Item Location: Baileyville, IL 61007 Equipment Sold "AS IS, WHERE IS": All equipment/property is sold "AS IS, WHERE IS" with no warranty or guarantees, expressed or implied, No operational assessments or testing have been made by Del Peterson on this item, it has been photographed ONLY.



### #160 - New Inner Tubes (PZ6367)

New Inner Tubes (PZ6367), 33 - 9.50/10R16.5 inner tubes. Notes: Item Location: Baileyville, IL 61007 Equipment Sold "AS IS, WHERE IS": All equipment/property is sold "AS IS, WHERE IS" with no warranty or guarantees, expressed or implied, No operational assessments or testing have been made by Del Peterson on this item, it has been photographed ONLY.



---

### #161 - New Inner Tubes (PZ6371)

New Inner Tubes (PZ6371), 20 - various sizes of inner tubes. Notes: Item Location: Baileyville, IL 61007 Equipment Sold "AS IS, WHERE IS": All equipment/property is sold "AS IS, WHERE IS" with no warranty or guarantees, expressed or implied, No operational assessments or testing have been made by Del Peterson on this item, it has been photographed ONLY.



---

### #162 - 1964 NH3 Storage Tank (PZ6520)

1964 NH3 Storage Tank (PZ6520), 1964 12,000 gallon NH3 storage tank, steel saddles, tank volume gauge, tank & valve only, data plate. Notes: This tank must be removed by August 31st, 2017 with NO exceptions. Dismantle, removal and transportation is at the expense, risk and liability of the buyer. Item Location: Iuka, IL 62849 Equipment Sold "AS IS, WHERE IS": All equipment/property is sold "AS IS, WHERE IS" with no warranty or guarantees, expressed or implied, No operational assessments or testing have been made by Del Peterson on this item, it has been photographed ONLY.



---

### #163 - NH3 Equipment (PZ6521)

NH3 Equipment (PZ6521), 2 - electric motors, 2 - corken compressors, plumbing, safty shutoff, 4 - station loadout, mesh stand, steps. Notes: This all must be removed by August 31st, 2017 with NO exceptions. Dismantle, removal and transportation is at the expense, risk and liability of the buyer. Item Location: Iuka, IL 62849 Equipment Sold "AS IS, WHERE IS": All equipment/property is sold "AS IS, WHERE IS" with no warranty or guarantees, expressed or implied, No operational assessments or testing have been made by Del Peterson on this item, it has been photographed ONLY.



---

### #164 - 1995 IHC 8200 Truck (PZ6385)

1995 IHC 8200 Truck (PZ6385), M-11 Cummins diesel engine, 9 speed transmission, air conditioning, heat, single axle, 11R22.5 tires. Notes: Item Location: Baileyville, IL 61007 Equipment Sold "AS IS, WHERE IS": All equipment/property is sold "AS IS, WHERE IS" with no warranty or guarantees, expressed or implied, No operational assessments or testing have been made by Del Peterson on this item, it has been photographed ONLY.



---

### #165 - 2003 Sterling LT9500 Feed Truck (PZ6384)

2003 Sterling LT9500 Feed Truck (PZ6384), Cat C-12 diesel engine, manual transmission, air conditioning, heat, cruise control, tandem axle, full screw, 3rd axle, air ride suspension, CEI Pacer 6 compartment aluminum bulk feed body, hydraulic auger, 425/65R22.5 front tires, aluminum rims, 11R22.5 rear tires, 255/70R22.5 cheater tires, shows 515,556 miles. Notes: Item Location: Baileyville, IL 61007 Equipment Sold "AS IS, WHERE IS": All equipment/property is sold "AS IS, WHERE IS" with no warranty or guarantees, expressed or implied, No operational assessments or testing have been made by Del Peterson on this item, it has been photographed ONLY.



---

### #166 - 1997 IHC 8100 LP Truck (PZ6386)

1997 IHC 8100 LP Truck (PZ6386), diesel engine, 10 speed transmission, air conditioning, heat, Am/Fm cassette radio, single axle, 1992 Arrow 3000 gallon LP tank, national board# 20579, S/N 23649, tank volume gauge, Lectro Count LCR-II meter, electric hose reel with hose, 11R22.5 tires, approx. 336,272 miles. Notes: Item Location: Baileyville, IL 61007 Equipment Sold "AS IS, WHERE IS": All equipment/property is sold "AS IS, WHERE IS" with no warranty or guarantees, expressed or implied, No operational assessments or testing have been made by Del Peterson on this item, it has been photographed ONLY.



---

### #167 - 1993 IHC 8100 LP Truck (PZ6387)

1993 IHC 8100 LP Truck (PZ6387), L-10 Cummins diesel engine, Spicer 9 speed transmission, air conditioning, heat, Am/Fm CD stereo, single axle, 1973 Arrow 2900 gallon LP tank, national board# 2141, S/N 3707, tank volume gauge, Lectro Count LCR-II meter, electric hose reel with hose, 11R22.5 tires, shows 377,063 miles. Notes: Item Location: Baileyville, IL 61007 Equipment Sold "AS IS, WHERE IS": All equipment/property is sold "AS IS, WHERE IS" with no warranty or guarantees, expressed or implied, No operational assessments or testing have been made by Del Peterson on this item, it has been photographed ONLY.



---

### #169 - Pallet Receiver Hitches (PZ6389)

Pallet Receiver Hitches (PZ6389), 3 - receiver hitches, came off Chevrolet 2500 pickups. Notes: Item Location: Dakota, IL 61018 Equipment Sold "AS IS, WHERE IS": All equipment/property is sold "AS IS, WHERE IS" with no warranty or guarantees, expressed or implied, No operational assessments or testing have been made by Del Peterson on this item, it has been photographed ONLY.





---

### #170 - NH3 Storage Tank (NJP331)

NH3 Storage Tank (NJP331), 12,000 gallon NH3 storage tank, tank volume gauge, tank & valve only, NO data plate. Notes: This tank must be removed by August 15th, 2017 with NO exceptions. Dismantle, removal and transportation is at the expense, risk and liability of the buyer. Tank will be unhooked from all plumbing. Item Location: Hornick, IA 51026 Equipment Sold "AS IS, WHERE IS": All equipment/property is sold "AS IS, WHERE IS" with no warranty or guarantees, expressed or implied, No operational assessments or testing have been made by Del Peterson on this item, it has been photographed ONLY.



---

### #171 - Plumbing (PZ6390)

Plumbing (PZ6390), Pallet of plumbing and valves. Notes: Item Location: Dakota, IL 61018 Equipment Sold "AS IS, WHERE IS": All equipment/property is sold "AS IS, WHERE IS" with no warranty or guarantees, expressed or implied, No operational assessments or testing have been made by Del Peterson on this item, it has been photographed ONLY.



---

### #172 - Pumps (PZ6391)

Pumps (PZ6391), 2 - Gilbarco model MN3P32B-3 pumps. Notes: Item Location: Dakota, IL 61018 Equipment Sold "AS IS, WHERE IS": All equipment/property is sold "AS IS, WHERE IS" with no warranty or guarantees, expressed or implied, No operational assessments or testing have been made by Del Peterson on this item, it has been photographed ONLY.



---

### #173 - Concrete Scale (PZ6392)

Concrete Scale (PZ6392), Derlein 12' x 20' concrete deck scale. Notes: Item Location: Dakota, IL 61018 Equipment Sold "AS IS, WHERE IS": All equipment/property is sold "AS IS, WHERE IS" with no warranty or guarantees, expressed or implied, No operational assessments or testing have been made by Del Peterson on this item, it has been photographed ONLY.



---

### #174 - Pumps (PZ6398)

Pumps (PZ6398), pumps. Notes: Item Location: Pearl City, IL 61062 Equipment Sold "AS IS, WHERE IS": All equipment/property is sold "AS IS, WHERE IS" with no warranty or guarantees, expressed or implied, No operational assessments or testing have been made by Del Peterson on this item, it has been photographed ONLY.



---

### #175 - Heavy Duty Running Gear (PZ6399)

Heavy Duty Running Gear (PZ6399), Heavy duty 5th wheel running gear, 16.5L-16.1 flotation tires, used for double 1000 gallon NH3 tanks. Notes: Item Location: Pearl City, IL 61062 Equipment Sold "AS IS, WHERE IS": All equipment/property is sold "AS IS, WHERE IS" with no warranty or guarantees, expressed or implied, No operational assessments or testing have been made by Del Peterson on this item, it has been photographed ONLY.



---

### #176 - Heavy Duty Running Gear (PZ6400)

Heavy Duty Running Gear (PZ6400), Heavy duty 5th wheel running gear, 16.5L-16.1 flotation tires, used for double 1000 gallon NH3 tanks. Notes: Item Location: Pearl City, IL 61062 Equipment Sold "AS IS, WHERE IS": All equipment/property is sold "AS IS, WHERE IS" with no warranty or guarantees, expressed or implied, No operational assessments or testing have been made by Del Peterson on this item, it has been photographed ONLY.



---

### #177 - NH3 Storage Tank (NJP335)

NH3 Storage Tank (NJP335), 11,000 gallon NH3 storage tank, Magnetel tank volume gauge, tank & valve only, NO data plate. Notes: This tank must be removed by August 15th, 2017 with NO exceptions. Dismantle, removal and transportation is at the expense, risk and liability of the buyer. Tank will be unhooked from all plumbing. Item Location: Lu Verne, IA 50560 Equipment Sold "AS IS, WHERE IS": All equipment/property is sold "AS IS, WHERE IS" with no warranty or guarantees, expressed or implied, No operational assessments or testing have been made by Del Peterson on this item, it has been photographed ONLY.



---

### #178 - Heavy Duty Running Gear (PZ6401)

Heavy Duty Running Gear (PZ6401), Heavy duty 5th wheel running gear, 16.5L-16.1 flotation tires, used for double 1000 gallon NH3 tanks. Notes: Item Location: Pearl City, IL 61062 Equipment Sold "AS IS, WHERE IS": All equipment/property is sold "AS IS, WHERE IS" with no warranty or guarantees, expressed or implied, No operational assessments or testing have been made by Del Peterson on this item, it has been photographed ONLY.



---

**#179 - Heavy Duty Running Gear (PZ6402)**

Heavy Duty Running Gear (PZ6402), Heavy duty 5th wheel running gear, 16.5L-16.1 flotation tires, used for double 1000 gallon NH3 tanks. Notes: Item Location: Pearl City, IL 61062 Equipment Sold "AS IS, WHERE IS": All equipment/property is sold "AS IS, WHERE IS" with no warranty or guarantees, expressed or implied, No operational assessments or testing have been made by Del Peterson on this item, it has been photographed ONLY.



---

**#180 - Heavy Duty Running Gear (PZ6403)**

Heavy Duty Running Gear (PZ6403), Heavy duty 5th wheel running gear, 16.5L-16.1 flotation tires, used for double 1000 gallon NH3 tanks. Notes: Item Location: Pearl City, IL 61062 Equipment Sold "AS IS, WHERE IS": All equipment/property is sold "AS IS, WHERE IS" with no warranty or guarantees, expressed or implied, No operational assessments or testing have been made by Del Peterson on this item, it has been photographed ONLY.



---

**#181 - Heavy Duty Running Gear (PZ6404)**

Heavy Duty Running Gear (PZ6404), Heavy duty 5th wheel running gear, 16.5L-16.1 flotation tires, used for double 1000 gallon NH3 tanks. Notes: Item Location: Pearl City, IL 61062 Equipment Sold "AS IS, WHERE IS": All equipment/property is sold "AS IS, WHERE IS" with no warranty or guarantees, expressed or implied, No operational assessments or testing have been made by Del Peterson on this item, it has been photographed ONLY.



---

**#182 - Heavy Duty Running Gear (PZ6405)**

Heavy Duty Running Gear (PZ6405), Heavy duty 5th wheel running gear, 16.5L-16.1 flotation tires, used for double 1000 gallon NH3 tanks. Notes: Item Location: Pearl City, IL 61062 Equipment Sold "AS IS, WHERE IS": All equipment/property is sold "AS IS, WHERE IS" with no warranty or guarantees, expressed or implied, No operational assessments or testing have been made by Del Peterson on this item, it has been photographed ONLY.



---

**#183 - Heavy Duty Running Gear (PZ6406)**

Heavy Duty Running Gear (PZ6406), Heavy duty 5th wheel running gear, 16.5L-16.1 flotation tires, used for double 1000 gallon NH3 tanks. Notes: Item Location: Pearl City, IL 61062 Equipment Sold "AS IS, WHERE IS": All equipment/property is sold "AS IS, WHERE IS" with no warranty or guarantees, expressed or implied, No operational assessments or testing have been made by Del Peterson on this item, it has been photographed ONLY.



---

**#184 - Heavy Duty Running Gear (PZ6407)**

Heavy Duty Running Gear (PZ6407), Heavy duty 5th wheel running gear, 16.5L-16.1 flotation tires, used for double 1000 gallon NH3 tanks. Notes: Item Location: Pearl City, IL 61062 Equipment Sold "AS IS, WHERE IS": All equipment/property is sold "AS IS, WHERE IS" with no warranty or guarantees, expressed or implied, No operational assessments or testing have been made by Del Peterson on this item, it has been photographed ONLY.



---

**#185 - Heavy Duty Running Gear (PZ6408)**

Heavy Duty Running Gear (PZ6408), Heavy duty 5th wheel running gear, 16.5L-16.1 flotation tires, used for double 1000 gallon NH3 tanks. Notes: Item Location: Pearl City, IL 61062 Equipment Sold "AS IS, WHERE IS": All equipment/property is sold "AS IS, WHERE IS" with no warranty or guarantees, expressed or implied, No operational assessments or testing have been made by Del Peterson on this item, it has been photographed ONLY.



---

**#186 - NH3 Storage Tank (NJP336)**

NH3 Storage Tank (NJP336), 11,000 gallon NH3 storage tank, Magnetel tank volume gauge, tank & valve only, NO data plate. Notes: This tank must be removed by August 15th, 2017 with NO exceptions. Dismantle, removal and transportation is at the expense, risk and liability of the buyer. Tank will be unhooked from all plumbing. Item Location: Lu Verne, IA 50560 Equipment Sold "AS IS, WHERE IS": All equipment/property is sold "AS IS, WHERE IS" with no warranty or guarantees, expressed or implied, No operational assessments or testing have been made by Del Peterson on this item, it has been photographed ONLY.



---

**#187 - Gleaner E Combine (PZ6522)**

Gleaner E Combine (PZ6522), Gleaner E plot combine, 3 row, gas engine, straw chopper, S/N SC28-8308, HarvestMaster HM-401-CCU monitor, HarvestMaster HM-302 Field Printer, 18.4-26 front tires, 11L-15SL rear tires. Notes: Item Location: Iuka, IL 62849 Equipment Sold "AS IS, WHERE IS": All equipment/property is sold "AS IS, WHERE IS" with no warranty or guarantees, expressed or implied, No operational assessments or testing have been made by Del Peterson on this item, it has been photographed ONLY.



---

### #188 - Heavy Duty Running Gear (PZ6409)

Heavy Duty Running Gear (PZ6409), Heavy duty 5th wheel running gear, 16.5L-16.1 flotation tires, used for double 1000 gallon NH3 tanks. Notes: Item Location: Pearl City, IL 61062 Equipment Sold "AS IS, WHERE IS": All equipment/property is sold "AS IS, WHERE IS" with no warranty or guarantees, expressed or implied, No operational assessments or testing have been made by Del Peterson on this item, it has been photographed ONLY.



---

### #189 - Heavy Duty Running Gear (PZ6410)

Heavy Duty Running Gear (PZ6410), Heavy duty 5th wheel running gear, 16.5L-16.1 flotation tires, used for double 1000 gallon NH3 tanks. Notes: Item Location: Pearl City, IL 61062 Equipment Sold "AS IS, WHERE IS": All equipment/property is sold "AS IS, WHERE IS" with no warranty or guarantees, expressed or implied, No operational assessments or testing have been made by Del Peterson on this item, it has been photographed ONLY.



---

### #190 - Heavy Duty Running Gear (PZ6411)

Heavy Duty Running Gear (PZ6411), Heavy duty 5th wheel running gear, 16.5L-16.1 flotation tires, used for double 1000 gallon NH3 tanks. Notes: Item Location: Pearl City, IL 61062 Equipment Sold "AS IS, WHERE IS": All equipment/property is sold "AS IS, WHERE IS" with no warranty or guarantees, expressed or implied, No operational assessments or testing have been made by Del Peterson on this item, it has been photographed ONLY.



---

### #191 - Heavy Duty Running Gear (PZ6412)

Heavy Duty Running Gear (PZ6412), Heavy duty 5th wheel running gear, 16.5L-16.1 flotation tires, used for double 1000 gallon NH3 tanks. Notes: Item Location: Pearl City, IL 61062 Equipment Sold "AS IS, WHERE IS": All equipment/property is sold "AS IS, WHERE IS" with no warranty or guarantees, expressed or implied, No operational assessments or testing have been made by Del Peterson on this item, it has been photographed ONLY.



---

### #192 - Heavy Duty Running Gear (PZ6413)

Heavy Duty Running Gear (PZ6413), Heavy duty 5th wheel running gear, 16.5L-16.1 flotation tires, used for double 1000 gallon NH3 tanks. Notes: Item Location: Pearl City, IL 61062 Equipment Sold "AS IS, WHERE IS": All equipment/property is sold "AS IS, WHERE IS" with no warranty or guarantees, expressed or implied, No operational assessments or testing have been made by Del Peterson on this item, it has been photographed ONLY.



---

### #193 - Heavy Duty Running Gear (PZ6414)

Heavy Duty Running Gear (PZ6414), Heavy duty 5th wheel running gear, 16.5L-16.1 flotation tires, used for double 1000 gallon NH3 tanks. Notes: Item Location: Pearl City, IL 61062 Equipment Sold "AS IS, WHERE IS": All equipment/property is sold "AS IS, WHERE IS" with no warranty or guarantees, expressed or implied, No operational assessments or testing have been made by Del Peterson on this item, it has been photographed ONLY.



---

### #194 - Stainless Steel Shuttle Tank (PZ6396)

Stainless Steel Shuttle Tank (PZ6396), SST 195 gallon stainless steel shuttle tank. Notes: Item Location: Pearl City, IL 61062 Equipment Sold "AS IS, WHERE IS": All equipment/property is sold "AS IS, WHERE IS" with no warranty or guarantees, expressed or implied, No operational assessments or testing have been made by Del Peterson on this item, it has been photographed ONLY.



---

### #195 - Stainless Steel Shuttle Tank (PZ6397)

Stainless Steel Shuttle Tank (PZ6397), 275 gallon stainless steel shuttle tank. Notes: Item Location: Pearl City, IL 61062 Equipment Sold "AS IS, WHERE IS": All equipment/property is sold "AS IS, WHERE IS" with no warranty or guarantees, expressed or implied, No operational assessments or testing have been made by Del Peterson on this item, it has been photographed ONLY.



---

### #196 - John Deere 615F (PZ6417)

John Deere 615F (PZ6417), John Deere 615F bean head. Notes: Item Location: Wallingford, IA 51365 Equipment Sold "AS IS, WHERE IS": All equipment/property is sold "AS IS, WHERE IS" with no warranty or guarantees, expressed or implied, No operational assessments or testing have been made by Del Peterson on this item, it has been photographed ONLY.



### #197 - 1992 Dynaweld Trailer (PZ6352)

1992 Dynaweld Trailer (PZ6352), approx. 32' flatbed trailer, tandem axle, spring suspension, bulk head, 11.00-20 budd wheels. Notes: Item Location: Grinnell, IA 50112 Equipment Sold "AS IS, WHERE IS": All equipment/property is sold "AS IS, WHERE IS" with no warranty or guarantees, expressed or implied, No operational assessments or testing have been made by Del Peterson on this item, it has been photographed ONLY.



### #198 - 2012 Doyle Dry Tender Trailer (PZ6353)

2012 Doyle Dry Tender Trailer (PZ6353), 24 ton capacity, 3 compartment (8-8-8), 304 stainless steel, (3) Vibco vibrators, side discharge auger, manual roll tarp, rear ladder, Kubota 3.6L water cooled diesel engine, 22 gallon diesel tank, 52 gallon hydraulic tank, shows 534 hours, mounted on 2012 B&B trailer, tandem axle, spring suspension, 255/70R22.5 tires, GVWR 45,000lbs. Notes: Item Location: Grinnell, IA 50112 Equipment Sold "AS IS, WHERE IS": All equipment/property is sold "AS IS, WHERE IS" with no warranty or guarantees, expressed or implied, No operational assessments or testing have been made by Del Peterson on this item, it has been photographed ONLY.



### #199 - 1992 Dynaweld Trailer (PZ6351)

1992 Dynaweld Trailer (PZ6351), approx. 32' flatbed trailer, tandem axle, spring suspension, bulk head, 11.00-20 budd wheels, Ace Roto-Mold 3750 gallon poly liquid nurse tank, Ace Roto-Mold 55 gallon chemical eductor, Honda GX 200 gas engine, Pacer pump, plumbing. Notes: Tank, chemical eductor, pump & motor all new 2 years ago. Item Location: Grinnell, IA 50112 Equipment Sold "AS IS, WHERE IS": All equipment/property is sold "AS IS, WHERE IS" with no warranty or guarantees, expressed or implied, No operational assessments or testing have been made by Del Peterson on this item, it has been photographed ONLY.



### #200 - 1996 Freightliner FLD 120 Truck (PZ6418)

1996 Freightliner FLD 120 Truck (PZ6418), Cat 3176 diesel engine, Fuller 9 speed transmission, air conditioning, heat, Am/Fm CD stereo, cruise control, tandem axle, full screw, 170" WB, hydraulic 5th wheel, shows 492,737 miles. Notes: Item Location: Fort Dodge, IA 50501 Equipment Sold "AS IS, WHERE IS": All equipment/property is sold "AS IS, WHERE IS" with no warranty or guarantees, expressed or implied, No operational assessments or testing have been made by Del Peterson on this item, it has been photographed ONLY.



### #202 - Set of (4) Original Titan Tires & Rims (MH181)

Set of (4) Original Titan Tires & Rims (MH181), tires & rims came off a 2008 Apache 1010 Sprayer, Titan tires (2) 380/80R38 R1-W radials and (2) 380/90/R46, all rims are heavy duty with 8 bolt pattern, all tires are around 40% tread. Notes: Shipping available at buyers expense. Item Location: Frankenmuth, MI 48734 Equipment Sold "AS IS, WHERE IS": All equipment/property is sold "AS IS, WHERE IS" with no warranty or guarantees, expressed or implied, No operational assessments or testing have been made by Del Peterson on this item, it has been photographed ONLY.



### #203 - 2012 Willmar Super 600 Unit# 15560 (NJP318)

2012 Willmar Super 600 Unit# 15560 (NJP318), stainless steel dry buggy spreader, dual PTO drive spinners, 16.5L-16.1 flotation tires. Notes: Item Location: East Prairie, MO 63845 Equipment Sold "AS IS, WHERE IS": All equipment/property is sold "AS IS, WHERE IS" with no warranty or guarantees, expressed or implied, No operational assessments or testing have been made by Del Peterson on this item, it has been photographed ONLY.



### #204 - 2007 Willmar Super 800 Unit# 15571 (NJP319)

2007 Willmar Super 800 Unit# 15571 (NJP319), stainless steel dry buggy spreader, dual PTO drive spinners, 16.5L-16.1 flotation tires. Notes: Item Location: East Prairie, MO 63845 Equipment Sold "AS IS, WHERE IS": All equipment/property is sold "AS IS, WHERE IS" with no warranty or guarantees, expressed or implied, No operational assessments or testing have been made by Del Peterson on this item, it has been photographed ONLY.



### #205 - 2012 Willmar Super 800 Unit# 15580 (NJP320)

2012 Willmar Super 800 Unit# 15580 (NJP320), stainless steel dry buggy spreader, dual PTO drive spinners, 19L-16.1 flotation tires. Notes: Item Location: East Prairie, MO 63845 Equipment Sold "AS IS, WHERE IS": All equipment/property is sold "AS IS, WHERE IS" with no warranty or guarantees, expressed or implied, No operational assessments or testing have been made by Del Peterson on this item, it has been photographed ONLY.



### #206 - 2010 Willmar Super 600 Unit# 15564 (NJP321)

2010 Willmar Super 600 Unit# 15564 (NJP321), stainless steel dry buggy spreader, dual PTO drive spinners, 16.5L-16.1 flotation tires. Notes: Missing PTO DRIVE. Item Location: East Prairie, MO 63845 Equipment Sold "AS IS, WHERE IS": All equipment/property is sold "AS IS, WHERE IS" with no warranty or guarantees, expressed or implied, No operational assessments or testing have been made by Del Peterson on this item, it has been photographed ONLY.





---

**#207 - 2010 Willmar Super 800 Unit# 15586 (NJP322)**

2010 Willmar Super 800 Unit# 15586 (NJP322), stainless steel dry buggy spreader, dual PTO drive spinners, 19L-16.1 flotation tires. Notes: Item Location: East Prairie, MO 63845 Equipment Sold "AS IS, WHERE IS": All equipment/property is sold "AS IS, WHERE IS" with no warranty or guarantees, expressed or implied, No operational assessments or testing have been made by Del Peterson on this item, it has been photographed ONLY.



---

**#208 - Adams Dry Spreader Unit# 15578 (NJP328)**

Adams Dry Spreader Unit# 15578 (NJP328), stainless steel buggy, hydraulic spinner, ground drive wheel, tandem axle, REAR AXLE GONE. Notes: Missing rear axle. Item Location: East Prairie, MO 63845 Equipment Sold "AS IS, WHERE IS": All equipment/property is sold "AS IS, WHERE IS" with no warranty or guarantees, expressed or implied, No operational assessments or testing have been made by Del Peterson on this item, it has been photographed ONLY.



---

**#209 - Adams Dry Spreader Unit# 15576 (NJP329)**

Adams Dry Spreader Unit# 15576 (NJP329), stainless steel buggy, hydraulic spinner, ground drive wheel, tandem axle, REAR AXLE OFF. Notes: Rear axle is OFF. Item Location: East Prairie, MO 63845 Equipment Sold "AS IS, WHERE IS": All equipment/property is sold "AS IS, WHERE IS" with no warranty or guarantees, expressed or implied, No operational assessments or testing have been made by Del Peterson on this item, it has been photographed ONLY.



---

**#210 - Adams Applicator Unit# 15614 (NJP323)**

Adams Applicator Unit# 15614 (NJP323), 11 coulter side dress applicator, 700 gallon poly liquid tank, ground drive John Blue pump, 16.5L-16.1 flotation tires. Notes: Applicator was all in working order BUT has not been used in a couple years. Item Location: East Prairie, MO 63845 Equipment Sold "AS IS, WHERE IS": All equipment/property is sold "AS IS, WHERE IS" with no warranty or guarantees, expressed or implied, No operational assessments or testing have been made by Del Peterson on this item, it has been photographed ONLY.



---

**#211 - Adams Applicator Unit# 15599 (NJP324)**

Adams Applicator Unit# 15599 (NJP324), 11 coulter side dress applicator, 1000 gallon poly liquid tank, ground drive John Blue pump, 16.5L-16.1 flotation tires. Notes: Applicator was all in working order BUT has not been used in a couple years. One wing cylinder is GONE. Item Location: East Prairie, MO 63845 Equipment Sold "AS IS, WHERE IS": All equipment/property is sold "AS IS, WHERE IS" with no warranty or guarantees, expressed or implied, No operational assessments or testing have been made by Del Peterson on this item, it has been photographed ONLY.



---

**#212 - Adams Applicator Unit# 15598 (NJP325)**

Adams Applicator Unit# 15598 (NJP325), 13 coulter side dress applicator, 1000 gallon poly liquid tank, ground drive John Blue pump, 16.5L-16.1 flotation tires. Notes: Tank has a CRACK. One wing lift cylinder is missing. Applicator was all in working order but has not been used in a couple years. Item Location: East Prairie, MO 63845 Equipment Sold "AS IS, WHERE IS": All equipment/property is sold "AS IS, WHERE IS" with no warranty or guarantees, expressed or implied, No operational assessments or testing have been made by Del Peterson on this item, it has been photographed ONLY.



---

**#213 - Adams Applicator Unit# 15596 (NJP326)**

Adams Applicator Unit# 15596 (NJP326), 11 coulter side dress applicator, 1000 gallon poly liquid tank, ground drive John Blue pump, 16.5L-16.1 flotation tires. Notes: Applicator was all in working order BUT has not been used in a couple years. Item Location: East Prairie, MO 63845 Equipment Sold "AS IS, WHERE IS": All equipment/property is sold "AS IS, WHERE IS" with no warranty or guarantees, expressed or implied, No operational assessments or testing have been made by Del Peterson on this item, it has been photographed ONLY.



---

**#214 - Adams Applicator Unit# 15618 (NJP327)**

Adams Applicator Unit# 15618 (NJP327), 9 coulter side dress applicator, 700 gallon poly liquid tank, ground drive John Blue pump, 16.5L-16.1 flotation tires. Notes: Applicator was all in working order BUT has not been used in a couple years. Item Location: East Prairie, MO 63845 Equipment Sold "AS IS, WHERE IS": All equipment/property is sold "AS IS, WHERE IS" with no warranty or guarantees, expressed or implied, No operational assessments or testing have been made by Del Peterson on this item, it has been photographed ONLY.



---

**#215 - 2007 Doosan Unit# 10358 (RMC123)**

2007 Doosan Unit# 10358 (RMC123), LP gas engine, (NO Tank), shuttle shift drive, 5000# capacity, OROPS, pneumatic tire, 3 stage mast, hydraulic side shift. Notes: Item Location: Webb, MS 38966 Equipment Sold "AS IS, WHERE IS": All equipment/property is sold "AS IS, WHERE IS" with no warranty or guarantees, expressed or implied, No operational assessments or testing have been made by Del Peterson on this item, it has been photographed ONLY.



### #216 - 2000 Daewoo Unit# 5158 (RMC124)

2000 Daewoo Unit# 5158 (RMC124), LP gas engine, shuttle shift, 3 stage mast, hydraulic side shift, shows 6031 hours. Notes: Item Location: Webb, MS 38966 Equipment Sold "AS IS, WHERE IS": All equipment/property is sold "AS IS, WHERE IS" with no warranty or guarantees, expressed or implied, No operational assessments or testing have been made by Del Peterson on this item, it has been photographed ONLY.



### #217 - 1995 Great Dane Unit# 10195 (NJP330)

1995 Great Dane Unit# 10195 (NJP330), 48'X102 tandem axle dry van trailer, ROOF HAS HUGE HOLE, NOT ROAD WORTHY, rear cargo doors. Notes: Item Location: Mc Crory, AR 72101 Equipment Sold "AS IS, WHERE IS": All equipment/property is sold "AS IS, WHERE IS" with no warranty or guarantees, expressed or implied, No operational assessments or testing have been made by Del Peterson on this item, it has been photographed ONLY.



### #218 - 1976 Fruehauf Unit# 6710 (NJP314)

1976 Fruehauf Unit# 6710 (NJP314), tandem axle aluminum liquid transport trailer, 4 compartment, 8500 gallon capacity, Briggs gas engine, 11R22.5 tires, Dayton wheels. Notes: Item Location: Mc Crory, AR 72101 Equipment Sold "AS IS, WHERE IS": All equipment/property is sold "AS IS, WHERE IS" with no warranty or guarantees, expressed or implied, No operational assessments or testing have been made by Del Peterson on this item, it has been photographed ONLY.



### #219 - 2006 Magnolia Dry Tender Unit# 10249 (NJP317)

2006 Magnolia Dry Tender Unit# 10249 (NJP317), tandem axle trailer, Adams hydraulic stainless steel dry fertilizer tender box, has pump but NO MOTOR, roll over tarp, rear auger, 255/70R22.5 tires. Notes: Item Location: Mc Crory, AR 72101 Equipment Sold "AS IS, WHERE IS": All equipment/property is sold "AS IS, WHERE IS" with no warranty or guarantees, expressed or implied, No operational assessments or testing have been made by Del Peterson on this item, it has been photographed ONLY.



### #220 - 2000 Mack CH613 Unit#6717 (NJP315)

2000 Mack CH613 Unit#6717 (NJP315), Mack diesel engine, Mack Maxitorque transmission, tandem axle full screw, air ride suspension, day cab, dual aluminum fuel tanks, air slide 5th wheel plate, heated/power mirrors, AM/FM cassette radio, 295/75R22.5 tires, all aluminum Budd wheels. Notes: Item Location: Mc Crory, AR 72101 Equipment Sold "AS IS, WHERE IS": All equipment/property is sold "AS IS, WHERE IS" with no warranty or guarantees, expressed or implied, No operational assessments or testing have been made by Del Peterson on this item, it has been photographed ONLY.



### #221 - 1988 International 9300 Unit# 7917 (NJP313)

1988 International 9300 Unit# 7917 (NJP313), Cummins diesel engine, NON RUNNER, 9 speed transmission, tandem axle full screw, Adams 2 compartment stainless steel hydraulic dry fertilizer tender box, rear conveyor, air conditioning, AM/FM cassette radio, 285/75R24.5 tires, Budd wheels, front aluminums. Notes: This truck is being sold as NON RUNNER. Item Location: Mc Crory, AR 72101 Equipment Sold "AS IS, WHERE IS": All equipment/property is sold "AS IS, WHERE IS" with no warranty or guarantees, expressed or implied, No operational assessments or testing have been made by Del Peterson on this item, it has been photographed ONLY.



### #222 - 1987 International 9300 Unit# 1117 (NJP316)

1987 International 9300 Unit# 1117 (NJP316), Cummins diesel engine, 9 speed transmission, tandem axle full screw, 3000 gallon crown poly liquid tank, 16' steel flatbed, Honda gas engine, 2X2 pump, rear receiver hitch, air conditioning, 11R22.5 tires, Dayton wheels. Notes: Item Location: Mc Crory, AR 72101 Equipment Sold "AS IS, WHERE IS": All equipment/property is sold "AS IS, WHERE IS" with no warranty or guarantees, expressed or implied, No operational assessments or testing have been made by Del Peterson on this item, it has been photographed ONLY.



### #223 - 1998 Timppe Hopper Unit# 9003 (njp312)

1998 Timppe Hopper Unit# 9003 (njp312), 42' tandem axle aluminum hopper, roll over tarp, spring suspension, 11R24.5 tires, Budd wheels. Notes: Item Location: Stuttgart, AR 72160 Equipment Sold "AS IS, WHERE IS": All equipment/property is sold "AS IS, WHERE IS" with no warranty or guarantees, expressed or implied, No operational assessments or testing have been made by Del Peterson on this item, it has been photographed ONLY.



### #224 - 2009 Chevy 1500 Unit# 9263 (DR6384)

2009 Chevy 1500 Unit# 9263 (DR6384), Silverado 1500, gas engine, automatic transmission, quad cab, AM/FM CD radio, air conditioning, cruise control, rear receiver hitch, shows 209,724 miles. Notes: Item Location: Crowley, LA 70526 Equipment Sold "AS IS, WHERE IS": All equipment/property is sold "AS IS, WHERE IS" with no warranty or guarantees, expressed or implied, No operational assessments or testing have been made by Del Peterson on this item, it has been photographed ONLY.



### #225 - 1996 AG CHEM 854 RoGator (EG245)

1996 AG CHEM 854 RoGator (EG245), 60/80 booms, triple nozzle bodies, 800 gallon tank, rinse tank and foamer system, Raven 661, 40-50% tires all the way around, 4700 hours. Notes: Item Location: Fort Dodge, IA 50501 Equipment Sold "AS IS, WHERE IS": All equipment/property is sold "AS IS, WHERE IS" with no warranty or guarantees, expressed or implied, No operational assessments or testing have been made by Del Peterson on this item, it has been photographed ONLY.



### #226 - 2014 GVM Double Duty Spreader Box (EG244)

2014 GVM Double Duty Spreader Box (EG244), 8 Ton, belt over chain, shurlock wireless roll tarp, ISO ready, 304 SS, electric chain oiler, unit is a brand new hold over. Notes: Item Location: Fort Dodge, IA 50501 Equipment Sold "AS IS, WHERE IS": All equipment/property is sold "AS IS, WHERE IS" with no warranty or guarantees, expressed or implied, No operational assessments or testing have been made by Del Peterson on this item, it has been photographed ONLY.



### #227 - 2010 RoGator 1386 (KMK260)

2010 RoGator 1386 (KMK260), CAT diesel engine, hydrostatic transmission, auto steer, heat, ac, am/fm/cd radio, Raven Viper-Pro controller, 100 ft. auto height boom, 5 section shutoff, left and right fence row tip, 1300 gallon stainless steel tank, on board rinse system, tires 24.5 R x 32, all-purpose, shows miles, shows 2289 hours. Notes: Item Location: Colton, WA 99113 Equipment Sold "AS IS, WHERE IS": All equipment/property is sold "AS IS, WHERE IS" with no warranty or guarantees, expressed or implied, No operational assessments or testing have been made by Del Peterson on this item, it has been photographed ONLY.



### #228 - 1993 GMC School Bus (PZ6354)

1993 GMC School Bus (PZ6354), 255/80R22.5 G tires, 22.5x7.5 rims, 366 Gas Auto, shows 118,927 miles. Notes: Tires like new, runs good. Item Location: Hopkinton, IA 52237 Equipment Sold "AS IS, WHERE IS": All equipment/property is sold "AS IS, WHERE IS" with no warranty or guarantees, expressed or implied, No operational assessments or testing have been made by Del Peterson on this item, it has been photographed ONLY.



### #229 - 1995 Morbark 5600 Road Hog (PZ6357)

1995 Morbark 5600 Road Hog (PZ6357), new screens and new hammers, less than 30 hours on them, HP 800+, 255/70R22.5 tires, hours showing 7419. Notes: CAT Hours meter not working. Item Location: Hopkinton, IA 52237 Equipment Sold "AS IS, WHERE IS": All equipment/property is sold "AS IS, WHERE IS" with no warranty or guarantees, expressed or implied, No operational assessments or testing have been made by Del Peterson on this item, it has been photographed ONLY.



### #230 - 1956 Fire Truck F600 (PZ6355)

1956 Fire Truck F600 (PZ6355), 4.615 engine, shows 11,502 miles. Notes: Truck Runs, has original paint. The pump is stuck and no brakes. Item Location: Hopkinton, IA 52237 Equipment Sold "AS IS, WHERE IS": All equipment/property is sold "AS IS, WHERE IS" with no warranty or guarantees, expressed or implied, No operational assessments or testing have been made by Del Peterson on this item, it has been photographed ONLY.



### #231 - 1982 MACK 6x6 DMM6856S (PZ6356)

1982 MACK 6x6 DMM6856S (PZ6356), Calumet liquid tank model 375, shows 188,860 miles. Notes: Fair condition. Item Location: Hopkinton, IA 52237 Equipment Sold "AS IS, WHERE IS": All equipment/property is sold "AS IS, WHERE IS" with no warranty or guarantees, expressed or implied, No operational assessments or testing have been made by Del Peterson on this item, it has been photographed ONLY.



### #232 - Drying Conveyor (CG264)

Drying Conveyor (CG264), 11'4" conveyor surface length, 11'10" overall length, 16" conveyor surface width and 2'1" overall width, 15" height, perforated conveyor surface allows air to pass through seed while traveling, motor driven through gearbox allowing variable speed. Notes: Item Location: Ellsworth, IA 50075 Equipment Sold "AS IS, WHERE IS": All equipment/property is sold "AS IS, WHERE IS" with no warranty or guarantees, expressed or implied, No operational assessments or testing have been made by Del Peterson on this item, it has been photographed ONLY.



---

### #233 - John Deere 212 Utility Tractor (PD376)

John Deere 212 Utility Tractor (PD376), cab, radio, speakers, blinkers, lights, hydraulic lift, electric shoot, cab heats up nicely in the winter, rebuilt last season. Notes: Item Location: Jackson, MN 56143 Equipment Sold "AS IS, WHERE IS": All equipment/property is sold "AS IS, WHERE IS" with no warranty or guarantees, expressed or implied, No operational assessments or testing have been made by Del Peterson on this item, it has been photographed ONLY.



---

### #234 - 2009 50th Anniversary Skidoo 800 Summit 154 Ptek (PD377)

2009 50th Anniversary Skidoo 800 Summit 154 Ptek (PD377), 5900 miles, new track, new rails, new runners, she's ready to rip the trails up or climb the side of a mountain, you won't find a nicer sled. Notes: Item Location: Jackson, MN 56143 Equipment Sold "AS IS, WHERE IS": All equipment/property is sold "AS IS, WHERE IS" with no warranty or guarantees, expressed or implied, No operational assessments or testing have been made by Del Peterson on this item, it has been photographed ONLY.



---

### #235 - 1989 Chevrolet K2500 Pickup (EG226)

1989 Chevrolet K2500 Pickup (EG226), automatic, AM/FM, good tires, Heat/ AC, no rust, new plugs and wires. Notes: Item Location: Gilman, IL 60938 Equipment Sold "AS IS, WHERE IS": All equipment/property is sold "AS IS, WHERE IS" with no warranty or guarantees, expressed or implied, No operational assessments or testing have been made by Del Peterson on this item, it has been photographed ONLY.



---

### #236 - Case IH 1020 25' bean head with Unverferth HT30 Head Trailer (AL159)

Case IH 1020 25' bean head with Unverferth HT30 Head Trailer (AL159), 3" cut, field tracker, fore and aft reel, ran on 2388 combine. Notes: The floor is good, dividers need some TLC. The head trailer is in excellent condition with good tires. This item was used last fall. Item Location: Bedford, IA 50833 Equipment Sold "AS IS, WHERE IS": All equipment/property is sold "AS IS, WHERE IS" with no warranty or guarantees, expressed or implied, No operational assessments or testing have been made by Del Peterson on this item, it has been photographed ONLY.



---

### #237 - 18' Wet Boom Sprayer (EG255)

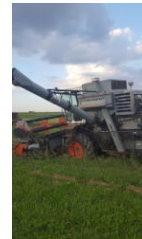
18' Wet Boom Sprayer (EG255), Hypro 2.5 HP 4101 pump, 3 section manual control booms, homemade unit, was having problem with center section and upgraded to newer sprayer, ran great otherwise. Notes: Item Location: Oakley, IL 62501 Equipment Sold "AS IS, WHERE IS": All equipment/property is sold "AS IS, WHERE IS" with no warranty or guarantees, expressed or implied, No operational assessments or testing have been made by Del Peterson on this item, it has been photographed ONLY.



---

### #238 - Gleaner F 13' Platform (EG251)

Gleaner F 13' Platform (EG251), 292 gas engine has hole in block, good tires, bought it to use and blew engine on the way to field, good parts or could run again with different engine. Notes: Item Location: Oakley, IL 62501 Equipment Sold "AS IS, WHERE IS": All equipment/property is sold "AS IS, WHERE IS" with no warranty or guarantees, expressed or implied, No operational assessments or testing have been made by Del Peterson on this item, it has been photographed ONLY.



---

### #239 - Layco Belt Conveyor (EG252)

Layco Belt Conveyor (EG252), 3 HP motor, very little use, was used to fill pro boxes only, per previous owner it was used for approximately 1500 bushel of seed beans. Notes: Item Location: Oakley, IL 62501 Equipment Sold "AS IS, WHERE IS": All equipment/property is sold "AS IS, WHERE IS" with no warranty or guarantees, expressed or implied, No operational assessments or testing have been made by Del Peterson on this item, it has been photographed ONLY.





---

### #240 - International Harvester 820 Head (EG226)

International Harvester 820 Head (EG226), 17.5' cut, all new sections on cutter bar, new drive belt for sickle, guard is ok, used last fall, needs a couple shoes replaced, partially converted to plastic fingers on reel, could be good parts head or made to work, head cart is NOT INCLUDED. Notes: Head cart is NOT INCLUDED. Seller can help load. Item Location: Oakley, IL 62501 Equipment Sold "AS IS, WHERE IS": All equipment/property is sold "AS IS, WHERE IS" with no warranty or guarantees, expressed or implied, No operational assessments or testing have been made by Del Peterson on this item, it has been photographed ONLY.



---

### #241 - Gleaner 430 Corn Head (EG256)

Gleaner 430 Corn Head (EG256), orange frame, never ran, previous owner claimed to use it. Notes: Seller can help load. Item Location: Oakley, IL 62501 Equipment Sold "AS IS, WHERE IS": All equipment/property is sold "AS IS, WHERE IS" with no warranty or guarantees, expressed or implied, No operational assessments or testing have been made by Del Peterson on this item, it has been photographed ONLY.



---

### #242 - Hypro 4 Roller Pump (EG248)

Hypro 4 Roller Pump (EG248), 2.5 horsepower, pro engine, never used. Notes: Item Location: Oakley, IL 62501 Equipment Sold "AS IS, WHERE IS": All equipment/property is sold "AS IS, WHERE IS" with no warranty or guarantees, expressed or implied, No operational assessments or testing have been made by Del Peterson on this item, it has been photographed ONLY.



---

### #243 - Black and Decker Miter Saw (EG250)

Black and Decker Miter Saw (EG250), includes stand, little use. Notes: Item Location: Oakley, IL 62501 Equipment Sold "AS IS, WHERE IS": All equipment/property is sold "AS IS, WHERE IS" with no warranty or guarantees, expressed or implied, No operational assessments or testing have been made by Del Peterson on this item, it has been photographed ONLY.



---

### #244 - Hydraulic Drive Pressure Washer (EG253)

Hydraulic Drive Pressure Washer (EG253), mounted on 3pt hookup. Notes: Item Location: Oakley, IL 62501 Equipment Sold "AS IS, WHERE IS": All equipment/property is sold "AS IS, WHERE IS" with no warranty or guarantees, expressed or implied, No operational assessments or testing have been made by Del Peterson on this item, it has been photographed ONLY.



---

### #245 - Metal Sheer (EG254)

Metal Sheer (EG254), distributed by Swenson Steel Products Co. Notes: Item Location: Oakley, IL 62501 Equipment Sold "AS IS, WHERE IS": All equipment/property is sold "AS IS, WHERE IS" with no warranty or guarantees, expressed or implied, No operational assessments or testing have been made by Del Peterson on this item, it has been photographed ONLY.



---

### #246 - 2- 5 bolt 15" trailer rims (EG249)

2- 5 bolt 15" trailer rims (EG249), brand new, never used. Notes: Item Location: Oakley, IL 62501 Equipment Sold "AS IS, WHERE IS": All equipment/property is sold "AS IS, WHERE IS" with no warranty or guarantees, expressed or implied, No operational assessments or testing have been made by Del Peterson on this item, it has been photographed ONLY.



---

### #247 - Cat Motorgrader (TR3488)

Cat Motorgrader (TR3488), Cat Motorgrader, runs good, tires 30% needs to be pull started to get running, all gears are good and clutch is good and motor doesn't use any oil. Notes: Item Location: Newcastle, NE 68757 Equipment Sold "AS IS, WHERE IS": All equipment/property is sold "AS IS, WHERE IS" with no warranty or guarantees, expressed or implied, No operational assessments or testing have been made by Del Peterson on this item, it has been photographed ONLY.



---

### #248 - IHC 560 Tractor (TR3489)

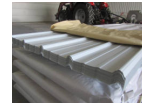
IHC 560 Tractor (TR3489), runs ok has two point that works good and torque works good and has brakes rear tires are 85% and they ar 18-4-38 and front tires are 25% gears are good blade also sells with tractor 560 diesel tractor. Notes: Item Location: Newcastle, NE 68757 Equipment Sold "AS IS, WHERE IS": All equipment/property is sold "AS IS, WHERE IS" with no warranty or guarantees, expressed or implied, No operational assessments or testing have been made by Del Peterson on this item, it has been photographed ONLY.



---

### #250 - Metal Siding (DR-6375)

Metal Siding (DR-6375), NEW UNUSED (70) sheets, American made, White color, 12' long X 36" overlap coverage, Premium Pro Rib Profile style, 29 gauge. ALWAYS stored inside. Meets all USA building material engineering codes for Tested Tolerances for wind & snow. USA stamped seal of approval documentation on all products. Notes: Loadout IS available with flexible appointments. Can also offer hardware, trim, corners at wholesale prices. Item Location: Monroe, NE 68647 Equipment Sold "AS IS, WHERE IS": All equipment/property is sold "AS IS, WHERE IS" with no warranty or guarantees, expressed or implied, No operational assessments or testing have been made by Del Peterson on this item, it has been photographed ONLY.



---

### #251 - Metal Siding (DR-6376)

Metal Siding (DR-6376), NEW UNUSED (70) sheets, American made, White color, 12' long X 36" overlap coverage, Premium Pro Rib Profile style, 29 gauge. ALWAYS stored inside. Meets all USA building material engineering codes for Tested Tolerances for wind & snow. USA stamped seal of approval documentation on all products. Notes: Loadout IS available with flexible appointments. Can also offer hardware, trim, corners at wholesale prices. Item Location: Monroe, NE 68647 Equipment Sold "AS IS, WHERE IS": All equipment/property is sold "AS IS, WHERE IS" with no warranty or guarantees, expressed or implied, No operational assessments or testing have been made by Del Peterson on this item, it has been photographed ONLY.



---

### #252 - Metal Siding (DR-6377)

Metal Siding (DR-6377), NEW UNUSED (70) sheets, American made, White color, 12' long X 36" overlap coverage, Premium Pro Rib Profile style, 29 gauge. ALWAYS stored inside. Meets all USA building material engineering codes for Tested Tolerances for wind & snow. USA stamped seal of approval documentation on all products. Notes: Loadout IS available with flexible appointments. Can also offer hardware, trim, corners at wholesale prices. Item Location: Monroe, NE 68647 Equipment Sold "AS IS, WHERE IS": All equipment/property is sold "AS IS, WHERE IS" with no warranty or guarantees, expressed or implied, No operational assessments or testing have been made by Del Peterson on this item, it has been photographed ONLY.



---

### #253 - Metal Siding (DR-6378)

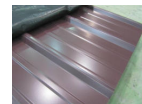
Metal Siding (DR-6378), NEW UNUSED (70) sheets, American made, White color, 12' long X 36" overlap coverage, Premium Pro Rib Profile style, 29 gauge. ALWAYS stored inside. Meets all USA building material engineering codes for Tested Tolerances for wind & snow. USA stamped seal of approval documentation on all products. Notes: Loadout IS available with flexible appointments. Can also offer hardware, trim, corners at wholesale prices. Item Location: Monroe, NE 68647 Equipment Sold "AS IS, WHERE IS": All equipment/property is sold "AS IS, WHERE IS" with no warranty or guarantees, expressed or implied, No operational assessments or testing have been made by Del Peterson on this item, it has been photographed ONLY.



---

### #254 - Metal Siding (DR-6379)

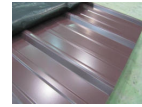
Metal Siding (DR-6379), NEW UNUSED (30) sheets, American made, Burgandy color, 16'-4" long X 36" overlap coverage, Premium Pro Rib Profile style, 29 gauge. ALWAYS stored inside. Meets all USA building material engineering codes for Tested Tolerances for wind & snow. USA stamped seal of approval documentation on all products. Notes: Loadout IS available with flexible appointments. Can also offer hardware, trim, corners at wholesale prices. Item Location: Monroe, NE 68647 Equipment Sold "AS IS, WHERE IS": All equipment/property is sold "AS IS, WHERE IS" with no warranty or guarantees, expressed or implied, No operational assessments or testing have been made by Del Peterson on this item, it has been photographed ONLY.



---

**#255 - Metal Siding (DR-6380)**

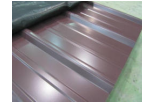
Metal Siding (DR-6380), NEW UNUSED (30) sheets, American made, Burgandy color, 16'-4" long X 36" overlap coverage, Premium Pro Rib Profile style, 29 gauge. ALWAYS stored inside. Meets all USA building material engineering codes for Tested Tolerances for wind & snow. USA stamped seal of approval documentation on all products. Notes: Loadout IS available with flexible appointments. Can also offer hardware, trim, corners at wholesale prices. Item Location: Monroe, NE 68647 Equipment Sold "AS IS, WHERE IS": All equipment/property is sold "AS IS, WHERE IS" with no warranty or guarantees, expressed or implied, No operational assessments or testing have been made by Del Peterson on this item, it has been photographed ONLY.



---

**#256 - Metal Siding (DR-6381)**

Metal Siding (DR-6381), NEW UNUSED (30) sheets, American made, Burgandy color, 16'-4" long X 36" overlap coverage, Premium Pro Rib Profile style, 29 gauge. ALWAYS stored inside. Meets all USA building material engineering codes for Tested Tolerances for wind & snow. USA stamped seal of approval documentation on all products. Notes: Loadout IS available with flexible appointments. Can also offer hardware, trim, corners at wholesale prices. Item Location: Monroe, NE 68647 Equipment Sold "AS IS, WHERE IS": All equipment/property is sold "AS IS, WHERE IS" with no warranty or guarantees, expressed or implied, No operational assessments or testing have been made by Del Peterson on this item, it has been photographed ONLY.



---

**#257 - Metal Siding (DR-6382)**

Metal Siding (DR-6382), NEW UNUSED (30) sheets, American made, Green color, 16' long X 36" overlap coverage, Premium Pro Rib Profile style, 29 gauge. ALWAYS stored inside. Meets all USA building material engineering codes for Tested Tolerances for wind & snow. USA stamped seal of approval documentation on all products. Notes: Loadout IS available with flexible appointments. Can also offer hardware, trim, corners at wholesale prices. Item Location: Monroe, NE 68647 Equipment Sold "AS IS, WHERE IS": All equipment/property is sold "AS IS, WHERE IS" with no warranty or guarantees, expressed or implied, No operational assessments or testing have been made by Del Peterson on this item, it has been photographed ONLY.



---

**#258 - Metal Siding (DR-6383)**

Metal Siding (DR-6383), NEW UNUSED (30) sheets, American made, Green color, 16' long X 36" overlap coverage, Premium Pro Rib Profile style, 29 gauge. ALWAYS stored inside. Meets all USA building material engineering codes for Tested Tolerances for wind & snow. USA stamped seal of approval documentation on all products. Notes: Loadout IS available with flexible appointments. Can also offer hardware, trim, corners at wholesale prices. Item Location: Monroe, NE 68647 Equipment Sold "AS IS, WHERE IS": All equipment/property is sold "AS IS, WHERE IS" with no warranty or guarantees, expressed or implied, No operational assessments or testing have been made by Del Peterson on this item, it has been photographed ONLY.



---

**#259 - Brillion Cultivator (RMC096)**

Brillion Cultivator (RMC096), 4 row, test plot cultivator. Notes: Item Location: Darlove, MS 38748 Equipment Sold "AS IS, WHERE IS": All equipment/property is sold "AS IS, WHERE IS" with no warranty or guarantees, expressed or implied, No operational assessments or testing have been made by Del Peterson on this item, it has been photographed ONLY.



---

**#260 - Cat Model 12 Motor Grader (RMC136)**

Cat Model 12 Motor Grader (RMC136), cat diesel engine, pony motor. Notes: Pony motor does not run. Item Location: Darlove, MS 38748 Equipment Sold "AS IS, WHERE IS": All equipment/property is sold "AS IS, WHERE IS" with no warranty or guarantees, expressed or implied, No operational assessments or testing have been made by Del Peterson on this item, it has been photographed ONLY.



---

**#261 - International Cultivator (RMC086)**

International Cultivator (RMC086), 8 row 30", 3 point mount cultivator, cushion sections. Notes: Item Location: Lake Village, AR 71653 Equipment Sold "AS IS, WHERE IS": All equipment/property is sold "AS IS, WHERE IS" with no warranty or guarantees, expressed or implied, No operational assessments or testing have been made by Del Peterson on this item, it has been photographed ONLY.



---

**#262 - John Deere Cultivator (RMC088)**

John Deere Cultivator (RMC088), 8 row 30" cultivator, 3 point mount, cushion 4 sweep sections. Notes: Item Location: Lake Village, AR 71653 Equipment Sold "AS IS, WHERE IS": All equipment/property is sold "AS IS, WHERE IS" with no warranty or guarantees, expressed or implied, No operational assessments or testing have been made by Del Peterson on this item, it has been photographed ONLY.



### #263 - Cultivator (RMC092)

Cultivator (RMC092), 8 row cultivator, 3 point mount, 6x6 toolbar. Notes: Being sold for parts. Item Location: Lake Village, AR 71653 Equipment Sold "AS IS, WHERE IS": All equipment/property is sold "AS IS, WHERE IS" with no warranty or guarantees, expressed or implied, No operational assessments or testing have been made by Del Peterson on this item, it has been photographed ONLY.



### #264 - John Deere Cultivator (RMC095)

John Deere Cultivator (RMC095), Model ER014, 8 row 30" cultivator, 4 sweep cushion sections, Notes: Item Location: Lake Village, AR 71653 Equipment Sold "AS IS, WHERE IS": All equipment/property is sold "AS IS, WHERE IS" with no warranty or guarantees, expressed or implied, No operational assessments or testing have been made by Del Peterson on this item, it has been photographed ONLY.



### #265 - Lilliston Cultivator (RMC078)

Lilliston Cultivator (RMC078), 12 Row 30", hydraulic fold cultivator, front blade plows, double rolling harrows, 3 point mount. Notes: Item Location: Lake Village, AR 71653 Equipment Sold "AS IS, WHERE IS": All equipment/property is sold "AS IS, WHERE IS" with no warranty or guarantees, expressed or implied, No operational assessments or testing have been made by Del Peterson on this item, it has been photographed ONLY.



### #266 - John Deere 85 Cultivator (RMC076)

John Deere 85 Cultivator (RMC076), 12 Row 38", hydraulic folding cultivator, s tines, rolling shields, 3 point mount. Notes: Item Location: Lake Village, AR 71653 Equipment Sold "AS IS, WHERE IS": All equipment/property is sold "AS IS, WHERE IS" with no warranty or guarantees, expressed or implied, No operational assessments or testing have been made by Del Peterson on this item, it has been photographed ONLY.



### #267 - John Deere 85 (RMC077)

John Deere 85 (RMC077), 12 row 38", hydraulic folding cultivator, s tines, rolling shields, 3 point mount. Notes: Item Location: Lake Village, AR 71653 Equipment Sold "AS IS, WHERE IS": All equipment/property is sold "AS IS, WHERE IS" with no warranty or guarantees, expressed or implied, No operational assessments or testing have been made by Del Peterson on this item, it has been photographed ONLY.



### #269 - John Deere 845 Cultivator (RMC082)

John Deere 845 Cultivator (RMC082), 12 row 38", hydraulic folding cultivator, s tines, rolling shields, 3 point mount. Notes: Item Location: Lake Village, AR 71653 Equipment Sold "AS IS, WHERE IS": All equipment/property is sold "AS IS, WHERE IS" with no warranty or guarantees, expressed or implied, No operational assessments or testing have been made by Del Peterson on this item, it has been photographed ONLY.



### #270 - Shop Built 85 Cultivator (RMC083)

Shop Built 85 Cultivator (RMC083), 12 row 38", hydraulic folding cultivator, s tines, rolling shields, 3 point mount. Notes: Item Location: Lake Village, AR 71653 Equipment Sold "AS IS, WHERE IS": All equipment/property is sold "AS IS, WHERE IS" with no warranty or guarantees, expressed or implied, No operational assessments or testing have been made by Del Peterson on this item, it has been photographed ONLY.



### #271 - Lilliston Cultivator (RMC084)

Lilliston Cultivator (RMC084), 12 row 38" , cultivator, double section rolling harrows, 3 point mount. Notes: Item Location: Lake Village, AR 71653 Equipment Sold "AS IS, WHERE IS": All equipment/property is sold "AS IS, WHERE IS" with no warranty or guarantees, expressed or implied, No operational assessments or testing have been made by Del Peterson on this item, it has been photographed ONLY.



### #272 - John Deere Cultivator (RMC085)

John Deere Cultivator (RMC085), 8 row 30", cultivator, cushion section, end pull transport gear, 3 point mount. Notes: Item Location: Lake Village, AR 71653 Equipment Sold "AS IS, WHERE IS": All equipment/property is sold "AS IS, WHERE IS" with no warranty or guarantees, expressed or implied, No operational assessments or testing have been made by Del Peterson on this item, it has been photographed ONLY.





---

### #273 - International Bed Roller Conditioner (RMC090)

International Bed Roller Conditioner (RMC090), 21' bed roller conditioner, 4 section rolling harrows, 3 point mount. Notes: Item Location: Lake Village, AR 71653 Equipment Sold "AS IS, WHERE IS": All equipment/property is sold "AS IS, WHERE IS" with no warranty or guarantees, expressed or implied, No operational assessments or testing have been made by Del Peterson on this item, it has been photographed ONLY.



---

### #274 - Double Disc Coulters (RMC091)

Double Disc Coulters (RMC091), 21' 3 point mount hiller, double disc coulters, 3 point mount. Notes: Item Location: Lake Village, AR 71653 Equipment Sold "AS IS, WHERE IS": All equipment/property is sold "AS IS, WHERE IS" with no warranty or guarantees, expressed or implied, No operational assessments or testing have been made by Del Peterson on this item, it has been photographed ONLY.



---

### #275 - 1995 Lund Boat

1995 Lund Boat, with live well and radio and storage for rods and life jackets. Comes with 115 Yamaha 4 stroke motor and ss prop and is 17 foot boat. motor is 2003 and was gone threw in 2010 and runs perfect low hour since it was worked on maybe 75 hours . also has trim and tilt. runs good. Notes: Item Location: Newcastle, NE 68757 Equipment Sold "AS IS, WHERE IS": All equipment/property is sold "AS IS, WHERE IS" with no warranty or guarantees, expressed or implied, No operational assessments or testing have been made by Del Peterson on this item, it has been photographed ONLY.



---

### #276 - 2004 Starcraft Marine Pontoon Boat

2004 Starcraft Marine Pontoon Boat, . 2005 Yacht Club boat trailer Boat has 10 person capacity and is 23foot and 3 inches has a 60 horse 4 stroke mercury motor. has canopy and comes with fuel tank and grill. Low hour motor and always has been keep inside. Seats and cushions are all like new. Notes: Item Location: Newcastle, NE 68757 Equipment Sold "AS IS, WHERE IS": All equipment/property is sold "AS IS, WHERE IS" with no warranty or guarantees, expressed or implied, No operational assessments or testing have been made by Del Peterson on this item, it has been photographed ONLY.



---

### #277 - Adams Spreader (RMC128)

Adams Spreader (RMC128), 5 ton stainless steel dry buggy spreader, ground drive web chain, hydraulic rear spinner ( 1 spinner is MISSING). Notes: Item Location: Belzoni, MS 39038 Equipment Sold "AS IS, WHERE IS": All equipment/property is sold "AS IS, WHERE IS" with no warranty or guarantees, expressed or implied, No operational assessments or testing have been made by Del Peterson on this item, it has been photographed ONLY.



---

### #278 - Adams Spreader (RMC130)

Adams Spreader (RMC130), 5 ton stainless steel dry buggy spreader, ground drive web chain, hydraulic rear spinners. Notes: Item Location: Belzoni, MS 39038 Equipment Sold "AS IS, WHERE IS": All equipment/property is sold "AS IS, WHERE IS" with no warranty or guarantees, expressed or implied, No operational assessments or testing have been made by Del Peterson on this item, it has been photographed ONLY.



---

### #279 - Adams Spreader (RMC131)

Adams Spreader (RMC131), 5 ton stainless steel dry buggy spreader, ground drive web chain, hydraulic rear spinners. Notes: Item Location: Belzoni, MS 39038 Equipment Sold "AS IS, WHERE IS": All equipment/property is sold "AS IS, WHERE IS" with no warranty or guarantees, expressed or implied, No operational assessments or testing have been made by Del Peterson on this item, it has been photographed ONLY.



---

### #280 - Adams Conditioner & Hopper (RMC133)

Adams Conditioner & Hopper (RMC133), stainless steel hopper fertilizer conditioner, electric drive, approximately 20' stainless steel loadout conveyor, cleated belt, electric drive motor. Notes: Item Location: Belzoni, MS 39038 Equipment Sold "AS IS, WHERE IS": All equipment/property is sold "AS IS, WHERE IS" with no warranty or guarantees, expressed or implied, No operational assessments or testing have been made by Del Peterson on this item, it has been photographed ONLY.



---

**#281 - 2006 KBH Unit# 2149 (RMC127)**

2006 KBH Unit# 2149 (RMC127), 2 compartment stainless steel hydraulic dry fertilizer tender, tandem axle, spring suspension, roll over tarp. Notes: NO POWER UNIT. Item Location: Belzoni, MS 39038 Equipment Sold "AS IS, WHERE IS": All equipment/property is sold "AS IS, WHERE IS" with no warranty or guarantees, expressed or implied, No operational assessments or testing have been made by Del Peterson on this item, it has been photographed ONLY.



---

**#282 - Adams Dry Spreader Unit# 2434 (RMC135)**

Adams Dry Spreader Unit# 2434 (RMC135), 5 ton stainless steel dry buggy spreader, ground drive web chain, hydraulic rear spinners, (1 spinner is MISSING). Notes: Item Location: Yazoo City, MS 39194 Equipment Sold "AS IS, WHERE IS": All equipment/property is sold "AS IS, WHERE IS" with no warranty or guarantees, expressed or implied, No operational assessments or testing have been made by Del Peterson on this item, it has been photographed ONLY.



---

**#283 - KBH Applicator (RMC134)**

KBH Applicator (RMC134), 500 gallon poly liquid tank, 14' toll bar, 2 knife injectors, John Blue ground drive pump. Notes: This applicator has not been used in some time. Item Location: Yazoo City, MS 39194 Equipment Sold "AS IS, WHERE IS": All equipment/property is sold "AS IS, WHERE IS" with no warranty or guarantees, expressed or implied, No operational assessments or testing have been made by Del Peterson on this item, it has been photographed ONLY.



---

**#284 - 1998 Volvo WG64T Unit# 9328 (RMC137)**

1998 Volvo WG64T Unit# 9328 (RMC137), Cummins diesel engine, 10 speed transmission, day cab, tandem axle full screw, dual aluminum fuel tanks, air conditioning, air brakes. Notes: Item Location: Rayville, LA 71269 Equipment Sold "AS IS, WHERE IS": All equipment/property is sold "AS IS, WHERE IS" with no warranty or guarantees, expressed or implied, No operational assessments or testing have been made by Del Peterson on this item, it has been photographed ONLY.



---

**#285 - 1999 Freightliner FLD120 Unit# 9013 (RMC138)**

1999 Freightliner FLD120 Unit# 9013 (RMC138), Detroit diesel engine, 9 speed transmission, tandem axle full screw, double bunk sleeper, air slide 5th wheel, air conditioning, stainless steel drop visor, dual chrome stacks, cruise control, outside aluminum Budd wheels. Notes: DOT is current. Rebuilt front axle, clutch, rear ends rebuilt. Item Location: Rayville, LA 71269 Equipment Sold "AS IS, WHERE IS": All equipment/property is sold "AS IS, WHERE IS" with no warranty or guarantees, expressed or implied, No operational assessments or testing have been made by Del Peterson on this item, it has been photographed ONLY.



---

**#286 - 1995 International 9200 Unit# 9302 (RMC140)**

1995 International 9200 Unit# 9302 (RMC140), Cummins diesel engine, 9 speed transmission, tandem axle full screw, air ride suspension, day cab, dual aluminum fuel tanks, 5th wheel plate, AM/FM CD radio, air conditioning, cruise control. Notes: DOT is current. Item Location: Rayville, LA 71269 Equipment Sold "AS IS, WHERE IS": All equipment/property is sold "AS IS, WHERE IS" with no warranty or guarantees, expressed or implied, No operational assessments or testing have been made by Del Peterson on this item, it has been photographed ONLY.



---

**#287 - 1999 Mack CH613 Unit# 6125 (RMC140)**

1999 Mack CH613 Unit# 6125 (RMC140), Mack diesel, 10 speed transmission, tandem axle full screw, day cab, air ride suspension, air conditioning, cruise control, outside Budd aluminum wheels. Notes: DOT is current. Item Location: Rayville, LA 71269 Equipment Sold "AS IS, WHERE IS": All equipment/property is sold "AS IS, WHERE IS" with no warranty or guarantees, expressed or implied, No operational assessments or testing have been made by Del Peterson on this item, it has been photographed ONLY.



---

**#288 - 1996 Freightliner FLD120 Unit# 9301 (RMC141)**

1996 Freightliner FLD120 Unit# 9301 (RMC141), Cummins diesel engine, 9 speed transmission, tandem axle full screw, air ride suspension, day cab, dual aluminum fuel tanks, 5th wheel plate, air conditioning, cruise control. Notes: DOT is current. Item Location: Rayville, LA 71269 Equipment Sold "AS IS, WHERE IS": All equipment/property is sold "AS IS, WHERE IS" with no warranty or guarantees, expressed or implied, No operational assessments or testing have been made by Del Peterson on this item, it has been photographed ONLY.



---

### #289 - Pallet Of Anhydrous Closing Wheels (PD385)

Pallet Of Anhydrous Closing Wheels (PD385). Notes: Item Location: West Liberty, IA 52776 Equipment Sold "AS IS, WHERE IS": All equipment/property is sold "AS IS, WHERE IS" with no warranty or guarantees, expressed or implied, No operational assessments or testing have been made by Del Peterson on this item, it has been photographed ONLY.



---

### #290 - 10 DMI Coulters (PD378)

10 DMI Coulters (PD378). Notes: Item Location: West Liberty, IA 52776 Equipment Sold "AS IS, WHERE IS": All equipment/property is sold "AS IS, WHERE IS" with no warranty or guarantees, expressed or implied, No operational assessments or testing have been made by Del Peterson on this item, it has been photographed ONLY.



---

### #291 - 17 Closing Coulters (PD379)

17 Closing Coulters (PD379). Notes: Item Location: West Liberty, IA 52776 Equipment Sold "AS IS, WHERE IS": All equipment/property is sold "AS IS, WHERE IS" with no warranty or guarantees, expressed or implied, No operational assessments or testing have been made by Del Peterson on this item, it has been photographed ONLY.



---

### #292 - 23 Anhydrous Knives (PD380)

23 Anhydrous Knives (PD380), some with vapor tubes. Notes: Item Location: West Liberty, IA 52776 Equipment Sold "AS IS, WHERE IS": All equipment/property is sold "AS IS, WHERE IS" with no warranty or guarantees, expressed or implied, No operational assessments or testing have been made by Del Peterson on this item, it has been photographed ONLY.



---

### #293 - Wings With 2 Anhydrous Shanks (PD381)

Wings With 2 Anhydrous Shanks (PD381), all hardware. Notes: Item Location: West Liberty, IA 52776 Equipment Sold "AS IS, WHERE IS": All equipment/property is sold "AS IS, WHERE IS" with no warranty or guarantees, expressed or implied, No operational assessments or testing have been made by Del Peterson on this item, it has been photographed ONLY.



---

### #294 - Cast Iron Injection Pump With Tank (PD382)

Cast Iron Injection Pump With Tank (PD382), set up for n-serve with cables. Notes: Item Location: West Liberty, IA 52776 Equipment Sold "AS IS, WHERE IS": All equipment/property is sold "AS IS, WHERE IS" with no warranty or guarantees, expressed or implied, No operational assessments or testing have been made by Del Peterson on this item, it has been photographed ONLY.



---

### #295 - Set Of Chains For 17.5L-24 Tires (PD383)

Set Of Chains For 17.5L-24 Tires (PD383), used on Case backhoe. Notes: Item Location: West Liberty, IA 52776 Equipment Sold "AS IS, WHERE IS": All equipment/property is sold "AS IS, WHERE IS" with no warranty or guarantees, expressed or implied, No operational assessments or testing have been made by Del Peterson on this item, it has been photographed ONLY.



---

### #296 - Teejet Guidelines And Cables (PD384)

Teejet Guidelines And Cables (PD384), mid tech globe. Notes: Item Location: West Liberty, IA 52776 Equipment Sold "AS IS, WHERE IS": All equipment/property is sold "AS IS, WHERE IS" with no warranty or guarantees, expressed or implied, No operational assessments or testing have been made by Del Peterson on this item, it has been photographed ONLY.



---

### #297 - New Set of (4) Aluminum Trailer Fenders (KMK1013)

New Set of (4) Aluminum Trailer Fenders (KMK1013), never been used, minor shipping damage. Notes: Item Location: Burr Oak, KS 66936 Equipment Sold "AS IS, WHERE IS": All equipment/property is sold "AS IS, WHERE IS" with no warranty or guarantees, expressed or implied, No operational assessments or testing have been made by Del Peterson on this item, it has been photographed ONLY.



---

### #298 - Oliver Super 188 Power Unit w/ Pump (KMK1006)

Oliver Super 188 Power Unit w/ Pump (KMK1006), has good parts, shows 4,220 hours. Notes: Power unit is stuck, does not run. Item Location: Burr Oak, KS 66936 Equipment Sold "AS IS, WHERE IS": All equipment/property is sold "AS IS, WHERE IS" with no warranty or guarantees, expressed or implied, No operational assessments or testing have been made by Del Peterson on this item, it has been photographed ONLY.



---

### #299 - Case Backhoe (KMK1007)

Case Backhoe (KMK1007), hasn't been used in years, needs work, hours are unknown, Notes: Item Location: Burr Oak, KS 66936 Equipment Sold "AS IS, WHERE IS": All equipment/property is sold "AS IS, WHERE IS" with no warranty or guarantees, expressed or implied, No operational assessments or testing have been made by Del Peterson on this item, it has been photographed ONLY.



---

### #300 - Harvestore Liqueure System (KMK1012)

Harvestore Liqueure System (KMK1012), porcelain steel, good condition, no rust in tank. Notes: Item Location: Burr Oak, KS 66936 Equipment Sold "AS IS, WHERE IS": All equipment/property is sold "AS IS, WHERE IS" with no warranty or guarantees, expressed or implied, No operational assessments or testing have been made by Del Peterson on this item, it has been photographed ONLY.



---

### #301 - 5 ft. King Kutter Mower (KMK1011)

5 ft. King Kutter Mower (KMK1011), used very little, paint underneath not chipped, blade still very sharp and in great condition. Notes: No PTO Shaft. Item Location: Burr Oak, KS 66936 Equipment Sold "AS IS, WHERE IS": All equipment/property is sold "AS IS, WHERE IS" with no warranty or guarantees, expressed or implied, No operational assessments or testing have been made by Del Peterson on this item, it has been photographed ONLY.



---

### #302 - Pallet Jack & Pump with Full Set of Forklift Tires (KMK1009)

Pallet Jack & Pump with Full Set of Forklift Tires (KMK1009), pallet jack needs battery, is electric over hydraulic, forklift tires are new Kargo K2, 825x15, new recap, solid rubber. Notes: Item Location: Burr Oak, KS 66936 Equipment Sold "AS IS, WHERE IS": All equipment/property is sold "AS IS, WHERE IS" with no warranty or guarantees, expressed or implied, No operational assessments or testing have been made by Del Peterson on this item, it has been photographed ONLY.



---

### #303 - Firestone Tire and Rim (KMK1008)

Firestone Tire and Rim (KMK1008), good tire and wheel, 24.5-32 on a 21 inch rim with about 85% tread. Notes: Item Location: Burr Oak, KS 66936 Equipment Sold "AS IS, WHERE IS": All equipment/property is sold "AS IS, WHERE IS" with no warranty or guarantees, expressed or implied, No operational assessments or testing have been made by Del Peterson on this item, it has been photographed ONLY.



---

### #304 - Running Gear with 5th Wheel Hitch (KMK1010)

Running Gear with 5th Wheel Hitch (KMK1010), for a tanker trailer, can attach to aluminum or stainless steel trailer, never used, brand new. Notes: Item Location: Burr Oak, KS 66936 Equipment Sold "AS IS, WHERE IS": All equipment/property is sold "AS IS, WHERE IS" with no warranty or guarantees, expressed or implied, No operational assessments or testing have been made by Del Peterson on this item, it has been photographed ONLY.



---

### #305 - 2013 John Deere 2510H Highspeed Bar (MH183)

2013 John Deere 2510H Highspeed Bar (MH183), 15-row, 30 inch drawn flexible high speed applicator, one owner, like new condition, full set of weights, shedded when not in use, currently used for liquid & anhydrous, less than 2000 acres on it. Notes: Liquid & Anhydrous system will be removed prior to selling. Item Location: Holcomb, KS 67851 Equipment Sold "AS IS, WHERE IS": All equipment/property is sold "AS IS, WHERE IS" with no warranty or guarantees, expressed or implied, No operational assessments or testing have been made by Del Peterson on this item, it has been photographed ONLY.



---

### #306 - 12 Row John Deere 1253A Row Crop Head (MH188)

12 Row John Deere 1253A Row Crop Head (MH188), 12 row, 30 inch spacings, complete rebuild two and a half years ago, approx. 2000 acres on it since rebuild, always shedded when not in use. Notes: \$26,000 in parts for rebuild. Item Location: Holcomb, KS 67851 Equipment Sold "AS IS, WHERE IS": All equipment/property is sold "AS IS, WHERE IS" with no warranty or guarantees, expressed or implied, No operational assessments or testing have been made by Del Peterson on this item, it has been photographed ONLY.



---

### #307 - Sicam Tire Balancer SBM V655 (MH187)

Sicam Tire Balancer SBM V655 (MH187), everything works great, dual wheel adapter included. Notes: Was used until pulled out and replaced with newer version. Item Location: Manchester, IA 52057 Equipment Sold "AS IS, WHERE IS": All equipment/property is sold "AS IS, WHERE IS" with no warranty or guarantees, expressed or implied, No operational assessments or testing have been made by Del Peterson on this item, it has been photographed ONLY.





### #308 - 1987 White Volvo Semi Truck (PD396)

1987 White Volvo Semi Truck (PD396), 3406 b model cat, 9 speed, 80 % tires, new battery, new air tanks, air lines, brake canisters, air valves, radio, speakers, fresh paint, fresh rebuild with 40,000 miles on it, fresh DOT inspection, this truck is 100% ready to go, shows 1100000 miles, Notes: Item Location: Jackson, MN 56143 Equipment Sold "AS IS, WHERE IS": All equipment/property is sold "AS IS, WHERE IS" with no warranty or guarantees, expressed or implied, No operational assessments or testing have been made by Del Peterson on this item, it has been photographed ONLY.



### #309 - 2000 Saab Convertible 9-3 (MH185)

2000 Saab Convertible 9-3 (MH185), 2.0 turbo engine, 6 speed, leather interior, AM/FM stereo, power locks, windows, mirrors, aluminum wheels, tires in good shape, like new, hardly driven, always stored in garage, shows 65,945 miles. Notes: Item Location: Rochester, MN 55906 Equipment Sold "AS IS, WHERE IS": All equipment/property is sold "AS IS, WHERE IS" with no warranty or guarantees, expressed or implied, No operational assessments or testing have been made by Del Peterson on this item, it has been photographed ONLY.



### #310 - 1988 IHC S2300 (CG228)

1988 IHC S2300 (CG228), Cummins diesel, 9 speed, Am/Fm cassette radio, 1600 gallon stainless steel liquid nurse tank, 295/75R22.5, air conditioning, heat, single axle, Jiangdong 5.5 gas engine/pump, Unit#T117. Notes: Current with DOT inspection! Truck is ready for the road. Item Location: Maquoketa, IA 52060 Equipment Sold "AS IS, WHERE IS": All equipment/property is sold "AS IS, WHERE IS" with no warranty or guarantees, expressed or implied, No operational assessments or testing have been made by Del Peterson on this item, it has been photographed ONLY.



### #311 - 1994 Terra Gator 1803 Liquid Floater (KMK259)

1994 Terra Gator 1803 Liquid Floater (KMK259), Cummins engine, diesel, Eaton Fuller transmission, 18 speed, heat and air conditioning, am/fm radio, 1,800 gal. stainless steel liquid system, 1,800 liquid system S/N: L180447, 80' boom, stainless steel form tank, top poly rinse tank, Raven SCS661 controller, 66 x 43.00 - 25, shows 48723 miles, shows 4596 hours. Notes: Relay in cab not working. Please contact seller for more information. Item Location: Tribune, KS 67879 Equipment Sold "AS IS, WHERE IS": All equipment/property is sold "AS IS, WHERE IS" with no warranty or guarantees, expressed or implied, No operational assessments or testing have been made by Del Peterson on this item, it has been photographed ONLY.



### #312 - 1994 Ford Probe GT (PD386)

1994 Ford Probe GT (PD386), 5 speed manual, fun little sports car to drive, shows 145,947 miles. Notes: Item Location: Grand Island, NE 68803 Equipment Sold "AS IS, WHERE IS": All equipment/property is sold "AS IS, WHERE IS" with no warranty or guarantees, expressed or implied, No operational assessments or testing have been made by Del Peterson on this item, it has been photographed ONLY.



### #313 - 2004 Pontiac Grand Prix GT2 (PD387)

2004 Pontiac Grand Prix GT2 (PD387), shows 177,847 miles. Notes: Item Location: Grand Island, NE 68803 Equipment Sold "AS IS, WHERE IS": All equipment/property is sold "AS IS, WHERE IS" with no warranty or guarantees, expressed or implied, No operational assessments or testing have been made by Del Peterson on this item, it has been photographed ONLY.



### #314 - 2006 Chrysler Sebring (PD388)

2006 Chrysler Sebring (PD388), automatic, rebuilt engine, shows 140,000 miles. Notes: Item Location: Grand Island, NE 68803 Equipment Sold "AS IS, WHERE IS": All equipment/property is sold "AS IS, WHERE IS" with no warranty or guarantees, expressed or implied, No operational assessments or testing have been made by Del Peterson on this item, it has been photographed ONLY.



### #315 - 2008 Chrysler Sebring (PD389)

2008 Chrysler Sebring (PD389), automatic, shows 168,979 miles. Notes: Item Location: Grand Island, NE 68803 Equipment Sold "AS IS, WHERE IS": All equipment/property is sold "AS IS, WHERE IS" with no warranty or guarantees, expressed or implied, No operational assessments or testing have been made by Del Peterson on this item, it has been photographed ONLY.



### #316 - 2002 Honda Odyssey (PD390)

2002 Honda Odyssey (PD390), automatic, runs good, sliding door is a little sticky, shows 181,806 miles. Notes: Item Location: Grand Island, NE 68803 Equipment Sold "AS IS, WHERE IS": All equipment/property is sold "AS IS, WHERE IS" with no warranty or guarantees, expressed or implied, No operational assessments or testing have been made by Del Peterson on this item, it has been photographed ONLY.



### #317 - 2002 Hyundai XG350 (PD391)

2002 Hyundai XG350 (PD391), automatic, miles are unknown. Notes: Item Location: Grand Island, NE 68803 Equipment Sold "AS IS, WHERE IS": All equipment/property is sold "AS IS, WHERE IS" with no warranty or guarantees, expressed or implied, No operational assessments or testing have been made by Del Peterson on this item, it has been photographed ONLY.



### #318 - 2011 Kia Optima (PD392)

2011 Kia Optima (PD392), 6 speed manual, new cv shaft and hub assembly and alignment, runs and drives great, shows 92,000 miles. Notes: Item Location: Grand Island, NE 68803 Equipment Sold "AS IS, WHERE IS": All equipment/property is sold "AS IS, WHERE IS" with no warranty or guarantees, expressed or implied, No operational assessments or testing have been made by Del Peterson on this item, it has been photographed ONLY.



### #319 - 2008 Hyundai Sonata (PD393)

2008 Hyundai Sonata (PD393), automatic, has some hail damage, runs and drives great, shows 120,090 miles. Notes: Item Location: Grand Island, NE 68803 Equipment Sold "AS IS, WHERE IS": All equipment/property is sold "AS IS, WHERE IS" with no warranty or guarantees, expressed or implied, No operational assessments or testing have been made by Del Peterson on this item, it has been photographed ONLY.



### #320 - 1995 Honda Magna 750 (PD394)

1995 Honda Magna 750 (PD394), runs and sound good, shows 40,000 miles. Notes: Item Location: Grand Island, NE 68803 Equipment Sold "AS IS, WHERE IS": All equipment/property is sold "AS IS, WHERE IS" with no warranty or guarantees, expressed or implied, No operational assessments or testing have been made by Del Peterson on this item, it has been photographed ONLY.



### #321 - 2006 Taizhou LB200Y-4 (PD395)

2006 Taizhou LB200Y-4 (PD395), runs and sounds good, shows 760 miles. Notes: Item Location: Grand Island, NE 68803 Equipment Sold "AS IS, WHERE IS": All equipment/property is sold "AS IS, WHERE IS" with no warranty or guarantees, expressed or implied, No operational assessments or testing have been made by Del Peterson on this item, it has been photographed ONLY.



### #322 - 1979 Jetco RT600 Tile Machine (PZ6295)

1979 Jetco RT600 Tile Machine (PZ6295), John Deere 6619 turbo charged diesel engine, 6 wheel drive, cuts 8' deep, setup for 12" tile, wired for Trimble GPS, wheel-port industries replacement parts, shows 1621 hours, S/N 103, MFG Code: 928771721. Notes: Entire digging frame rebuilt (50 hours on rebuild), all hydraulics gone through in the last 2 years. Item Location: Cerro Gordo, IL 61818 Equipment Sold "AS IS, WHERE IS": All equipment/property is sold "AS IS, WHERE IS" with no warranty or guarantees, expressed or implied, No operational assessments or testing have been made by Del Peterson on this item, it has been photographed ONLY.



### #323 - 1947 Butler 1,000 Gallon Anhydrous Tank (TC132)

1947 Butler 1,000 Gallon Anhydrous Tank (TC132), data plate. Notes: Item Location: Sublette, KS 67877 Equipment Sold "AS IS, WHERE IS": All equipment/property is sold "AS IS, WHERE IS" with no warranty or guarantees, expressed or implied, No operational assessments or testing have been made by Del Peterson on this item, it has been photographed ONLY.



### #324 - Manchester 109.3 Gallon LP Tank (TC142)

Manchester 109.3 Gallon LP Tank (TC142), data plate. Notes: Item Location: Sublette, KS 67877 Equipment Sold "AS IS, WHERE IS": All equipment/property is sold "AS IS, WHERE IS" with no warranty or guarantees, expressed or implied, No operational assessments or testing have been made by Del Peterson on this item, it has been photographed ONLY.



---

### #325 - John Deere Dirt Scraper (TC139)

John Deere Dirt Scraper (TC139), diesel motor, shows 9238 hours, Notes: Item Location: Sublette, KS 67877 Equipment Sold "AS IS, WHERE IS": All equipment/property is sold "AS IS, WHERE IS" with no warranty or guarantees, expressed or implied, No operational assessments or testing have been made by Del Peterson on this item, it has been photographed ONLY.



---

### #326 - 5 Bags Crushed Oyster Shell Flour (CG265)

5 Bags Crushed Oyster Shell Flour (CG265), great for use in your garden or if you have a farm spread it on the field, use with your tomato planting to help eliminate blossom end rot (lack of calcium), average weight is 2000 pounds per tote give or take 500 lbs. Notes: Item Location: Newport, MN 55055 Equipment Sold "AS IS, WHERE IS": All equipment/property is sold "AS IS, WHERE IS" with no warranty or guarantees, expressed or implied, No operational assessments or testing have been made by Del Peterson on this item, it has been photographed ONLY.



---

### #327 - 5 Bags Crushed Oyster Shell Flour (CG266)

5 Bags Crushed Oyster Shell Flour (CG266), great for use in your garden or if you have a farm spread it on the field, use with your tomato planting to help eliminate blossom end rot (lack of calcium), average weight is 2000 pounds per tote give or take 500 lbs. Notes: Item Location: Newport, MN 55055 Equipment Sold "AS IS, WHERE IS": All equipment/property is sold "AS IS, WHERE IS" with no warranty or guarantees, expressed or implied, No operational assessments or testing have been made by Del Peterson on this item, it has been photographed ONLY.



---

### #328 - 5 Bags Crushed Oyster Shell Flour (CG267)

5 Bags Crushed Oyster Shell Flour (CG267), great for use in your garden or if you have a farm spread it on the field, use with your tomato planting to help eliminate blossom end rot (lack of calcium), average weight is 2000 pounds per tote give or take 500 lbs. Notes: Item Location: Newport, MN 55055 Equipment Sold "AS IS, WHERE IS": All equipment/property is sold "AS IS, WHERE IS" with no warranty or guarantees, expressed or implied, No operational assessments or testing have been made by Del Peterson on this item, it has been photographed ONLY.



---

### #329 - 5 Bags Crushed Oyster Shell Flour (CG268)

5 Bags Crushed Oyster Shell Flour (CG268), great for use in your garden or if you have a farm spread it on the field, use with your tomato planting to help eliminate blossom end rot (lack of calcium), average weight is 2000 pounds per tote give or take 500 lbs. Notes: Item Location: Newport, MN 55055 Equipment Sold "AS IS, WHERE IS": All equipment/property is sold "AS IS, WHERE IS" with no warranty or guarantees, expressed or implied, No operational assessments or testing have been made by Del Peterson on this item, it has been photographed ONLY.



---

### #330 - 5 Bags Crushed Oyster Shell Flour (CG269)

5 Bags Crushed Oyster Shell Flour (CG269), great for use in your garden or if you have a farm spread it on the field, use with your tomato planting to help eliminate blossom end rot (lack of calcium), average weight is 2000 pounds per tote give or take 500 lbs. Notes: Item Location: Newport, MN 55055 Equipment Sold "AS IS, WHERE IS": All equipment/property is sold "AS IS, WHERE IS" with no warranty or guarantees, expressed or implied, No operational assessments or testing have been made by Del Peterson on this item, it has been photographed ONLY.



---

### #331 - 1970 E D Etnyre & CO TR6 Semi Trailer (EG247)

1970 E D Etnyre & CO TR6 Semi Trailer (EG247), 6500 Gallon, brakes and tires are good, inside of tank has been cleaned out. Notes: Item Location: Clinton, IA 52732 Equipment Sold "AS IS, WHERE IS": All equipment/property is sold "AS IS, WHERE IS" with no warranty or guarantees, expressed or implied, No operational assessments or testing have been made by Del Peterson on this item, it has been photographed ONLY.



---

### #332 - 1976 Ford U807D 20 Ton Grain Truck (EG246)

1976 Ford U807D 20 Ton Grain Truck (EG246), 328 CAT, 10.00-20 tires, 20 foot box with hoist, steel floor, steel sides, durable truck used for grain, corn and silage. Notes: Item Location: Clinton, IA 52732 Equipment Sold "AS IS, WHERE IS": All equipment/property is sold "AS IS, WHERE IS" with no warranty or guarantees, expressed or implied, No operational assessments or testing have been made by Del Peterson on this item, it has been photographed ONLY.



---

### #333 - 2011 Front Mount Helicopter 400 Gallon Poly Tank (PD197)

2011 Front Mount Helicopter 400 Gallon Poly Tank (PD197), Case/IH 290 front mount brackets, always stored inside, very clean. Notes: Item Location: Chillicothe, IL 61523 Equipment Sold "AS IS, WHERE IS": All equipment/property is sold "AS IS, WHERE IS" with no warranty or guarantees, expressed or implied, No operational assessments or testing have been made by Del Peterson on this item, it has been photographed ONLY.



---

### #334 - 2003 John Deere 1690 Air Drill (PD306)

2003 John Deere 1690 Air Drill (PD306), soybean special, 75% shoes rebushed, new Needham Ag V8 firming wheels, new 2 3/4 x 16 narrow gauge wheels, new Banilla seed tabs, new Dickey John hydraulic drive, can run with any Isobus, compatible monitor with John Deere 2630 & Case 700, Integra, all new in 2016 and used on 1700 cover srop acres, new large seed white feed cups installed and never used in spring of 2017. Notes: Item Location: Chillicothe, IL 61523 Equipment Sold "AS IS, WHERE IS": All equipment/property is sold "AS IS, WHERE IS" with no warranty or guarantees, expressed or implied, No operational assessments or testing have been made by Del Peterson on this item, it has been photographed ONLY.



---

### #335 - 24 Schaffert Chicken Tracker Closing Wheels (PD307)

24 Schaffert Chicken Tracker Closing Wheels (PD307), clean, 6000 acres, new bearings, 2000 acres on new bearings. Notes: Item Location: Chillicothe, IL 61523 Equipment Sold "AS IS, WHERE IS": All equipment/property is sold "AS IS, WHERE IS" with no warranty or guarantees, expressed or implied, No operational assessments or testing have been made by Del Peterson on this item, it has been photographed ONLY.



---

### #337 - John Deere 750C LGP Dozer (PD283)

John Deere 750C LGP Dozer (PD283), 28 inch wide tracks, 12 foot 6 inch 6 way blade, ac/heater fan, 200 hours on undercarriage, runs excellent , uses no oil, shows 9321 hours. Notes: Item Location: Slater, IA 50244 Equipment Sold "AS IS, WHERE IS": All equipment/property is sold "AS IS, WHERE IS" with no warranty or guarantees, expressed or implied, No operational assessments or testing have been made by Del Peterson on this item, it has been photographed ONLY.



---

### #338 - 2006 Side Dump Trailer (PD135)

2006 Side Dump Trailer (PD135), tandem axle, can dump on either side of trailer, air ride suspension, air scale gauge on front of trailer, 40 foot length x 102 inch wide, inside tub in excellent condition, brakes are good, tires are average, new dump cylinder installed in 2012. Notes: Item Location: Slater, IA 50244 Equipment Sold "AS IS, WHERE IS": All equipment/property is sold "AS IS, WHERE IS" with no warranty or guarantees, expressed or implied, No operational assessments or testing have been made by Del Peterson on this item, it has been photographed ONLY.

