

## Auction catalog

<b>Title</b>	Online Auction July 11, 2017 10AM Central
<b>Description</b>	The following line of Fertilizer, Farm Implement, Truck, Trailer & Construction Equipment will be sold online with the bidding ending on July 11, 2017. Location of the equipment is given. Bidding within the last minute before the closing of a lot will extend the bidding time by an additional minute. Be prepared to bid accordingly. For more information, contact Del Peterson & Associates: 419 West Judy Drive Fremont NE, 68025 Phone: 800-492-9090 or 402-721-4388 Fax: 402-721-4583 E-mail: auction@delpeterson.com
<b>Date</b>	Tue, Jul 11, 2017
<b>Starts at</b>	10:00 AM
<b>Address</b>	PO Box 654, Fremont, NE 68026 USA
<b>Categories</b>	

### #1 - Pallet Lot - Grain Handling Tubing (KMK262)

Pallet Lot - Grain Handling Tubing (KMK262), misc. grain handling tubing, there is a mix of 5.5" and 7.5" tubing that bolts together. Quality Plus diverter is in working condition. Notes: Item Location: Russell, KS 67665 Equipment Sold "AS IS, WHERE IS": All equipment/property is sold "AS IS, WHERE IS" with no warranty or guarantees, expressed or implied, No operational assessments or testing have been made by Del Peterson on this item, it has been photographed ONLY.



### #2 - US Filter 650 Gallon Vertical Tank (KMK264)

US Filter 650 Gallon Vertical Tank (KMK264), measures approximately 4' wide x 8.5' tall, 4 leg stand, epoxy lined. Notes: Item Location: Russell, KS 67665 Equipment Sold "AS IS, WHERE IS": All equipment/property is sold "AS IS, WHERE IS" with no warranty or guarantees, expressed or implied, No operational assessments or testing have been made by Del Peterson on this item, it has been photographed ONLY.



### #3 - Scot Motorpump 7.5 HP. (KMK267)

Scot Motorpump 7.5 HP. (KMK267), 15 standard fitted, 3 x 3 BN-CN seal, 5.13 Imp diameter, 7.5 hp. Motor, ODP 3500 rpm, 3" inlet and outlet. Notes: Scot Motorpump was purchased and never used. It appears to be in good condition, but we have never had it wired up and turned on. Item Location: Russell, KS 67665 Equipment Sold "AS IS, WHERE IS": All equipment/property is sold "AS IS, WHERE IS" with no warranty or guarantees, expressed or implied, No operational assessments or testing have been made by Del Peterson on this item, it has been photographed ONLY.



### #4 - STA-RITE 3 phase Motorpump (KMK263)

STA-RITE 3 phase Motorpump (KMK263), 3 hp. Baldor motor, model DHH3 -169Ms3, motor S/N: 1J06G, 3450 rpm, 2" inlet, 1.5" outlet. Notes: We have had this plumbed in and operational. Everything works well, but is too large of a pump for our needs. Item Location: Russell, KS 67665 Equipment Sold "AS IS, WHERE IS": All equipment/property is sold "AS IS, WHERE IS" with no warranty or guarantees, expressed or implied, No operational assessments or testing have been made by Del Peterson on this item, it has been photographed ONLY.



### #5 - USC 80 Unit Seed Bagging Hopper (KMK268)

USC 80 Unit Seed Bagging Hopper (KMK268), designed to hold 80 units of seed for rebagging into pro-boxes or bulk seed bags, castor wheels are bolted on and can be removed, includes downspout and gate. Notes: Item Location: Russell, KS 67665 Equipment Sold "AS IS, WHERE IS": All equipment/property is sold "AS IS, WHERE IS" with no warranty or guarantees, expressed or implied, No operational assessments or testing have been made by Del Peterson on this item, it has been photographed ONLY.



---

### #6 - 2008 Gustafson SS-LA Seed Treater (KMK266)

2008 Gustafson SS-LA Seed Treater (KMK266), stainless steel treater, 2.5 gallon pre-mix application tank, Dart controls, variable speed drive on horizontal mixing shaft, three (3) sets of rate cups, includes brushes for gentle seed treating such as with soybeans. Notes: Purchased brand new in 2008. This Gustafson SS-LA treater is offered along with a frame designed to protect it and conveniently move the treater where needed. This was used in our operation to treat plot seed by dumping 50 lb. bags into the hopper at the plot location. When setting on a pickup or trailer, catching the treated seed is easy and convenient as it leaves the treater. Treater worked great for plot seed and/or would be perfect for smaller seed treating lots. We have the operators manual and can email it to you for more details. We are happy to answer any questions. Item Location: Russell, KS 67665 Equipment Sold "AS IS, WHERE IS": All equipment/property is sold "AS IS, WHERE IS" with no warranty or guarantees, expressed or implied, No operational assessments or testing have been made by Del Peterson on this item, it has been photographed ONLY.



---

### #7 - 24' Quality Plus Seed Conveyor (KMK260)

24' Quality Plus Seed Conveyor (KMK260), model 524 ET, portable, 24' long conveyor, 14' maximum height, 2 hp. Baldor motor, 30 Amp, 240V service. Notes: Excellent condition. Been sitting for a few years. Should probably be greased up before long term use. Item Location: Russell, KS 67665 Equipment Sold "AS IS, WHERE IS": All equipment/property is sold "AS IS, WHERE IS" with no warranty or guarantees, expressed or implied, No operational assessments or testing have been made by Del Peterson on this item, it has been photographed ONLY.



---

### #8 - Manufactured Black Plastic 1" x 4"s (KMK261)

Manufactured Black Plastic 1" x 4"s (KMK261), approximate count 280. Notes: Bought them and didn't end up using the for what we hoped we could have. Item Location: Russell, KS 67665 Equipment Sold "AS IS, WHERE IS": All equipment/property is sold "AS IS, WHERE IS" with no warranty or guarantees, expressed or implied, No operational assessments or testing have been made by Del Peterson on this item, it has been photographed ONLY.



---

### #9 - Off-Set Vertical Smoker (KMK265)

Off-Set Vertical Smoker (KMK265), real wood fired / coal fired pit BBQ, very heavy built, 3/8" cook chamber, mounted on a very heavy frame with casters for rolling on hard surfaces, ball-valve for grease drain on bottom of cook chamber, dimensions: vertical cook chamber is 48" tall, inside diameter is roughly 23", uses standard "Webber" sized 21" cooking grates (2) and room to add more, fire box is 17.5" wide x 14.5" tall x 24" long, height from ground to top of smoke stack is 87". Notes: We will load this cooker with our forklift... It is too heavy to be loaded/off loaded by hand. Food shown is for demonstrational purposes only and not included in the sale of the cooker. Item Location: Russell, KS 67665 Equipment Sold "AS IS, WHERE IS": All equipment/property is sold "AS IS, WHERE IS" with no warranty or guarantees, expressed or implied, No operational assessments or testing have been made by Del Peterson on this item, it has been photographed ONLY.



---

### #10 - 800 Gallon Fuel Tank (CG278)

800 Gallon Fuel Tank (CG278), previously DOT approved fuel tank for diesel/kerosene/jet fuel, can hold approximately 500 gallons below the cracks, 2 inch FPT bung on the bottom, mounting flanges, dimensions: 7ft x 6.5ft short side is 24 inches tall, high side is 38 inches tall. Notes: Minor cracks in upper portion of tank. Item Location: Indianola, IA 50125 Equipment Sold "AS IS, WHERE IS": All equipment/property is sold "AS IS, WHERE IS" with no warranty or guarantees, expressed or implied, No operational assessments or testing have been made by Del Peterson on this item, it has been photographed ONLY.



---

### #11 - Lot of Pumps (CG275)

Lot of Pumps (CG275), (4) 12v chemical transfer pumps, 1 gas powered 2 inch centrifugal transfer pump, 1 Flowmax 8 pump with no engine/motor. Notes: Item Location: Indianola, IA 50125 Equipment Sold "AS IS, WHERE IS": All equipment/property is sold "AS IS, WHERE IS" with no warranty or guarantees, expressed or implied, No operational assessments or testing have been made by Del Peterson on this item, it has been photographed ONLY.



---

### #12 - 220v Transfer Pump/Motor (CG272)

220v Transfer Pump/Motor (CG272), 3 phase electric motor, attached to a 2 inch Flomax 8 transfer pump. Notes: In good operating condition. Item Location: Indianola, IA 50125 Equipment Sold "AS IS, WHERE IS": All equipment/property is sold "AS IS, WHERE IS" with no warranty or guarantees, expressed or implied, No operational assessments or testing have been made by Del Peterson on this item, it has been photographed ONLY.



---

### #13 - All Trade Table Saw (CG277)

All Trade Table Saw (CG277), 10" table saw in good working condition, 110v electric. Notes: Item Location: Indianola, IA 50125 Equipment Sold "AS IS, WHERE IS": All equipment/property is sold "AS IS, WHERE IS" with no warranty or guarantees, expressed or implied, No operational assessments or testing have been made by Del Peterson on this item, it has been photographed ONLY.



---

### #14 - Stihl Power Washer (CG276)

Stihl Power Washer (CG276), Stihl RB 400K, Honda GX340 is in good working condition and starts on first pull. Notes: Pressure washer pump is cracked and inoperable. Item Location: Indianola, IA 50125 Equipment Sold "AS IS, WHERE IS": All equipment/property is sold "AS IS, WHERE IS" with no warranty or guarantees, expressed or implied, No operational assessments or testing have been made by Del Peterson on this item, it has been photographed ONLY.



---

### #15 - John Deere A90 Portable Heater (CG274)

John Deere A90 Portable Heater (CG274), 110v electric powered kerosene heater, started and ignited when tested. Notes: Item Location: Indianola, IA 50125 Equipment Sold "AS IS, WHERE IS": All equipment/property is sold "AS IS, WHERE IS" with no warranty or guarantees, expressed or implied, No operational assessments or testing have been made by Del Peterson on this item, it has been photographed ONLY.



---

### #16 - Honda CG160 Engine (CG273)

Honda CG160 Engine (CG273), Honda engine for a generator, starts and runs well. Notes: Item Location: Indianola, IA 50125 Equipment Sold "AS IS, WHERE IS": All equipment/property is sold "AS IS, WHERE IS" with no warranty or guarantees, expressed or implied, No operational assessments or testing have been made by Del Peterson on this item, it has been photographed ONLY.



---

### #17 - Spra-Coupe 115 (DR6385)

Spra-Coupe 115 (DR6385), rebuilt engine with approximately 100 hours, new carburetor, new PTO shaft, set up for 30 inch rows, 150 gallon poly tank, 50' booms, select-a-spray, shows 2037 hours. Notes: All runs and functions as it should, seller has owners manuals. Item Location: Prairie City, SD 57649 Equipment Sold "AS IS, WHERE IS": All equipment/property is sold "AS IS, WHERE IS" with no warranty or guarantees, expressed or implied, No operational assessments or testing have been made by Del Peterson on this item, it has been photographed ONLY.



---

### #18 - Gleaner N5 Combine (DR6388)

Gleaner N5 Combine (DR6388), combine has R62 feeder house, new cylinder gear box, rebuilt injectors, hydraulic header conversion, new belts, monitor, cold AC, front tires 11.25-24SL, rear tires 24.5-32, shows 2022 hours, shows 1490 separator hours. Notes: Combine is field ready, owner has parts, owners and service manuals. Item Location: Prairie City, SD 57649 Equipment Sold "AS IS, WHERE IS": All equipment/property is sold "AS IS, WHERE IS" with no warranty or guarantees, expressed or implied, No operational assessments or testing have been made by Del Peterson on this item, it has been photographed ONLY.



---

### #19 - Gravity Flow Wagon (DR6386)

Gravity Flow Wagon (DR6386), approximately 150 bushel, on Rocking Bolster running gear. Notes: Item Location: Prairie City, SD 57649 Equipment Sold "AS IS, WHERE IS": All equipment/property is sold "AS IS, WHERE IS" with no warranty or guarantees, expressed or implied, No operational assessments or testing have been made by Del Peterson on this item, it has been photographed ONLY.



---

### #20 - Heider Wood Wagon (DR6390)

Heider Wood Wagon (DR6390), wagon is on Westendorf running gear, tires 9.50L-15. Notes: Item Location: Prairie City, SD 57649 Equipment Sold "AS IS, WHERE IS": All equipment/property is sold "AS IS, WHERE IS" with no warranty or guarantees, expressed or implied, No operational assessments or testing have been made by Del Peterson on this item, it has been photographed ONLY.



---

### #21 - New Idea 5114 Hydraswing Mower Conditioner (DR6402)

New Idea 5114 Hydraswing Mower Conditioner (DR6402), hydraulic swing & lift, good set of rolls, hydraulic separation on the rolls, hitch will swing to one side to load easily on a trailer, everything works as it should and is in good condition. Notes: Item Location: Prairie City, SD 57649 Equipment Sold "AS IS, WHERE IS": All equipment/property is sold "AS IS, WHERE IS" with no warranty or guarantees, expressed or implied, No operational assessments or testing have been made by Del Peterson on this item, it has been photographed ONLY.



---

### #22 - New Holland BR780 Baler (DR6387)

New Holland BR780 Baler (DR6387), baler has approximately 9100 bales on it, new pickup assembly has 200 bales, new belts, new PTO shaft, double spring rear bale trip, twine tie, always shedded when not in use. Notes: Item Location: Prairie City, SD 57649 Equipment Sold "AS IS, WHERE IS": All equipment/property is sold "AS IS, WHERE IS" with no warranty or guarantees, expressed or implied, No operational assessments or testing have been made by Del Peterson on this item, it has been photographed ONLY.



---

### #23 - Powder River Calf Table (DR6393)

Powder River Calf Table (DR6393). Notes: Item Location: Prairie City, SD 57649 Equipment Sold "AS IS, WHERE IS": All equipment/property is sold "AS IS, WHERE IS" with no warranty or guarantees, expressed or implied, No operational assessments or testing have been made by Del Peterson on this item, it has been photographed ONLY.



---

### #24 - Powder River Squeeze Chute (DR6392)

Powder River Squeeze Chute (DR6392). Notes: Item Location: Prairie City, SD 57649 Equipment Sold "AS IS, WHERE IS": All equipment/property is sold "AS IS, WHERE IS" with no warranty or guarantees, expressed or implied, No operational assessments or testing have been made by Del Peterson on this item, it has been photographed ONLY.



---

### #25 - Powder River Squeeze Chute (DR6391)

Powder River Squeeze Chute (DR6391). Notes: Item Location: Prairie City, SD 57649 Equipment Sold "AS IS, WHERE IS": All equipment/property is sold "AS IS, WHERE IS" with no warranty or guarantees, expressed or implied, No operational assessments or testing have been made by Del Peterson on this item, it has been photographed ONLY.



---

### #26 - 1996 Wilson Super Star Gooseneck Stock Trailer (DR6389)

1996 Wilson Super Star Gooseneck Stock Trailer (DR6389), 18' stock trailer, tandem axle, tires 235/85R16 in good condition, excellent floor, always inside, has had little use. Notes: Item Location: Prairie City, SD 57649 Equipment Sold "AS IS, WHERE IS": All equipment/property is sold "AS IS, WHERE IS" with no warranty or guarantees, expressed or implied, No operational assessments or testing have been made by Del Peterson on this item, it has been photographed ONLY.



---

### #28 - BRAND NEW (2) Firestone Flotation Tires/Rims (NP5004)

BRAND NEW (2) Firestone Flotation Tires/Rims (NP5004), 380/105R50 size, 100% tread, 12 bolt rim pattern, always stored inside, will fit a John Deere 4920, 4930, 4940 or R4045. Notes: Item Location: Fort Dodge, IA 50501 Equipment Sold "AS IS, WHERE IS": All equipment/property is sold "AS IS, WHERE IS" with no warranty or guarantees, expressed or implied, No operational assessments or testing have been made by Del Peterson on this item, it has been photographed ONLY.



---

### #29 - (4) Michelin Flotation Tires/Rims (NP5005)

(4) Michelin Flotation Tires/Rims (NP5005), 650/65R42 size, 85%-90% tread, 12 bolt rim pattern, always stored inside, roughly been over 4,000 acres, came off a John Deere 4830 sprayer. Notes: Item Location: Fort Dodge, IA 50501 Equipment Sold "AS IS, WHERE IS": All equipment/property is sold "AS IS, WHERE IS" with no warranty or guarantees, expressed or implied, No operational assessments or testing have been made by Del Peterson on this item, it has been photographed ONLY.



---

### #30 - 1999 Ford F-250 (TR3499)

1999 Ford F-250 (TR3499), V8 7.3L Diesel engine, automatic transmission, 4x4, heat/AC, AM/FM radio, bed liner, 5th wheel ball, extended cab, cruise control. Notes: Item Location: Allen, NE 68710 Equipment Sold "AS IS, WHERE IS": All equipment/property is sold "AS IS, WHERE IS" with no warranty or guarantees, expressed or implied, No operational assessments or testing have been made by Del Peterson on this item, it has been photographed ONLY.



---

### #31 - 2004 Terra Gator 6103 Liquid Floater (NP4965)

2004 Terra Gator 6103 Liquid Floater (NP4965), John Deere diesel engine (S/N RG6081H23965), Terra Shift transmission, heat, air conditioning, Am/Fm cassette radio, 1,800 gallon stainless steel liquid system (S/N L182067), 60/80' boom, foam marker, 55 gallon stainless steel foam marker tank, stainless steel chemical eductor, top poly rinse tank, 1000/50R25 tires, Raven SCS661 controller, Raven monitor, shows 94,430 miles, shows 8563 hours. Notes: Item Location: Holland, KS 67448 Equipment Sold "AS IS, WHERE IS": All equipment/property is sold "AS IS, WHERE IS" with no warranty or guarantees, expressed or implied, No operational assessments or testing have been made by Del Peterson on this item, it has been photographed ONLY.



---

### #32 - 1950 Beaird 18,000 Gallon Anhydrous Tank (DL132)

1950 Beaird 18,000 Gallon Anhydrous Tank (DL132), 109" diameter x 41' 6.25" length, shell thickness 0.98", head thickness 0.50". Notes: SELLER WILL LOAD TANK AT NO CHARGE FOR BUYER. Item Location: Wichita Falls, TX 76310 Equipment Sold "AS IS, WHERE IS": All equipment/property is sold "AS IS, WHERE IS" with no warranty or guarantees, expressed or implied, No operational assessments or testing have been made by Del Peterson on this item, it has been photographed ONLY.





---

### #33 - Grain Bunker System (PZ6524)

Grain Bunker System (PZ6524), Approx. 450,000 - 500,000 grain bunker system, Bunker Walls: Quantity - 86 (width 8', height 6'), Air Tubes: 114 perforated tile tubes & caps approx. (diameter 12", length 20'), Fans: Quantity - 30 Sukup fans (diameter 12", 1 hp-230 volts, 1 phase), Bunker Tarps: Brand New in bags (1 - 144' x 161', 1 - 156' x 161'). Notes: Item Location: Shell Rock, IA 50670 Equipment Sold "AS IS, WHERE IS": All equipment/property is sold "AS IS, WHERE IS" with no warranty or guarantees, expressed or implied, No operational assessments or testing have been made by Del Peterson on this item, it has been photographed ONLY.



---

### #34 - 2012 Mack CXU613 Truck (NJP337)

2012 Mack CXU613 Truck (NJP337), Mack MP8 diesel engine, 13 speed transmission, air conditioning, heat, Am/Fm CD stereo, cruise control, power windows & locks, tandem axle, full screw, air ride suspension, 5th wheel, wet kit, 11R22.5 tires, aluminum rims, shows 384,414 miles, Unit# 233. Notes: Item Location: Moorland, IA 50566 Equipment Sold "AS IS, WHERE IS": All equipment/property is sold "AS IS, WHERE IS" with no warranty or guarantees, expressed or implied, No operational assessments or testing have been made by Del Peterson on this item, it has been photographed ONLY.



---

### #35 - 2011 Mack CXU613 Truck (NJP332)

2011 Mack CXU613 Truck (NJP332), Mack MP8 diesel engine, 13 speed transmission, air conditioning, heat, Am/Fm CD stereo, cruise control, power windows & locks, tandem axle, full screw, air ride suspension, 5th wheel, wet kit, 295/75R22.5 front tires, Michelin 445/50R22.5 super single rear tires, aluminum rims, shows 355,703 miles, Unit# 264. Notes: Item Location: Moorland, IA 50566 Equipment Sold "AS IS, WHERE IS": All equipment/property is sold "AS IS, WHERE IS" with no warranty or guarantees, expressed or implied, No operational assessments or testing have been made by Del Peterson on this item, it has been photographed ONLY.



---

### #36 - 2006 John Deere 9760 STS (CG259)

2006 John Deere 9760 STS (CG259), corn/bean, PRWD, duals, chopper, yield monitor, lateral tilt feeder house, contour master, HD variable speed feeder house, header height resume, sensing+float, Greenstar less mapping with display, touchset concave adjust, round bar concave, general purpose chaffer, 22.5ft (6.9M) perforated unload auger, chopper with chaff spreader, 20.8-42 R1 drive tires, power rear wheel drive 2 speed, 28L-26 10PR steering tires, dial-a-speed header control, Xeon high density lighting, one owner, good tires, always stored inside, fully serviced, shows 2346 hours, shows 1515 separator hours, John Deere controller. Notes: Item Location: Browns, IL 62818 Equipment Sold "AS IS, WHERE IS": All equipment/property is sold "AS IS, WHERE IS" with no warranty or guarantees, expressed or implied, No operational assessments or testing have been made by Del Peterson on this item, it has been photographed ONLY.



---

### #37 - 2012 Ford F150 XLT Super Crew Pickup (PZ6525)

2012 Ford F150 XLT Super Crew Pickup (PZ6525), 4x4, Ecoboost 3.5L V6 gas engine, Electronic 6-speed automatic transmission, air conditioning, heat, Am/Fm CD stereo, cruise control, power windows & locks, power driver side seat, power sliding rear window, reverse sensing system, outside temp, day time running lamps, spray in bed liner, fog lights, running boards, P265/70R17 tires, shows 194,688 miles, Unit# 28358. Notes: PLEASE ALLOW AT LEAST 60 DAYS FOR TITLE TRANSFER. Item Location: Bloomington, IL 61704 Equipment Sold "AS IS, WHERE IS": All equipment/property is sold "AS IS, WHERE IS" with no warranty or guarantees, expressed or implied, No operational assessments or testing have been made by Del Peterson on this item, it has been photographed ONLY.



---

### #38 - 1980 Cat D6D Dozer (NP4980)

1980 Cat D6D Dozer (NP4980), 3306B diesel engine, S/N 63Z13091 (engine has been overhauled), powershift transmission (3 forward gears, 3 reverse gears), approx. 22" tracks, approx. 10' blade, shows 2,271 hours. Notes: Dozer has a left steering clutch problem. Hour meter was replaced before seller purchased this dozer, total hours are unknown. Item Location: Meadville, MO 64659 Equipment Sold "AS IS, WHERE IS": All equipment/property is sold "AS IS, WHERE IS" with no warranty or guarantees, expressed or implied, No operational assessments or testing have been made by Del Peterson on this item, it has been photographed ONLY.



---

### #39 - 1985 Cat 613C Motorized Scraper (NP4982)

1985 Cat 613C Motorized Scraper (NP4982), Cat 3208 diesel engine, 175HP, (S/N 93Z13756), open cab, Goodyear 23.5-25 tires, 11 C.Y. bowl, shows 7,297 hours. Notes: Scraper has a spare 23.5-25 tire, see photos. Item Location: Meadville, MO 64659 Equipment Sold "AS IS, WHERE IS": All equipment/property is sold "AS IS, WHERE IS" with no warranty or guarantees, expressed or implied, No operational assessments or testing have been made by Del Peterson on this item, it has been photographed ONLY.



---

### #40 - 1974 Rogers Lowboy Trailer (NP4985)

1974 Rogers Lowboy Trailer (NP4985), 25 ton, hydraulic detach, air brakes, tandem axle, 11R17.5 tires. Notes: Item Location: Meadville, MO 64659 Equipment Sold "AS IS, WHERE IS": All equipment/property is sold "AS IS, WHERE IS" with no warranty or guarantees, expressed or implied, No operational assessments or testing have been made by Del Peterson on this item, it has been photographed ONLY.



---

### #41 - 1994 International 9400 Truck (NP4984)

1994 International 9400 Truck (NP4984), Detroit Series 60 diesel engine 325HP, Rockwell 9 speed transmission, heat, air conditioning, Am/Fm cassette radio, cruise, single bunk sleeper, tandem axle, air ride suspension, single stack, 5th wheel plate, dual aluminum fuel tanks, 11R22.5 tires, GVWR 52,000lbs, shows 757,611 miles. Notes: Hood is damaged. Truck will sell with a BRAND NEW hood that will just need to be put on, see photos. Item Location: Meadville, MO 64659 Equipment Sold "AS IS, WHERE IS": All equipment/property is sold "AS IS, WHERE IS" with no warranty or guarantees, expressed or implied, No operational assessments or testing have been made by Del Peterson on this item, it has been photographed ONLY.



---

### #42 - Denver Rollers 48" (TR3489)

Denver Rollers 48" (TR3489), Denver rollers. Notes: Item Location: Craig, NE 68019 Equipment Sold "AS IS, WHERE IS": All equipment/property is sold "AS IS, WHERE IS" with no warranty or guarantees, expressed or implied, No operational assessments or testing have been made by Del Peterson on this item, it has been photographed ONLY.



---

### #43 - Denver Rollers 48" (TR3490)

Denver Rollers 48" (TR3490), Denver rollers. Notes: Item Location: Craig, NE 68019 Equipment Sold "AS IS, WHERE IS": All equipment/property is sold "AS IS, WHERE IS" with no warranty or guarantees, expressed or implied, No operational assessments or testing have been made by Del Peterson on this item, it has been photographed ONLY.



---

### #44 - Kifco T210 Water-Reel Unit#215 (MH176)

Kifco T210 Water-Reel Unit#215 (MH176), turbine driven water-reel, 2.1" ID x 400' MDPE tube, mechanical levelwind system with miswrap safety to ensure uniform, reliable tube rewinding, simple and accurate speed control sprinkler selector valve easily allows for auto shut-off at end of run or continued operation, three wheeled chassis with floatation tires for easy transportation. Notes: Portable irrigation system, can be easily transported by a small garden tractor or utility vehicle, bought in 2013, owner believes they have never been used. Item Location: New Orleans, LA 70001 Equipment Sold "AS IS, WHERE IS": All equipment/property is sold "AS IS, WHERE IS" with no warranty or guarantees, expressed or implied, No operational assessments or testing have been made by Del Peterson on this item, it has been photographed ONLY.



---

### #45 - Kifco T210 Water-Reel Unit#214 (MH177)

Kifco T210 Water-Reel Unit#214 (MH177), turbine driven water-reel, 2.1" ID x 400' MDPE tube, mechanical levelwind system with miswrap safety to ensure uniform, reliable tube rewinding, simple and accurate speed control sprinkler selector valve easily allows for auto shut-off at end of run or continued operation, three wheeled chassis with floatation tires for easy transportation. Notes: Portable irrigation system, can be easily transported by a small garden tractor or utility vehicle, bought in 2013, owner believes they have never been used. Item Location: New Orleans, LA 70001 Equipment Sold "AS IS, WHERE IS": All equipment/property is sold "AS IS, WHERE IS" with no warranty or guarantees, expressed or implied, No operational assessments or testing have been made by Del Peterson on this item, it has been photographed ONLY.



---

### #46 - 2010 Ford F-450 Flat Bed Truck (CG270)

2010 Ford F-450 Flat Bed Truck (CG270), 6.4L V-8 diesel, Torqshift 5-speed automatic transmission, limited slip axle, 4.30 ratio, XL 165" wheel base, XL décor package, trailer brake controller, trans power take-off provis, XL plus package, tilt steering wheel, cruise control, AM/FM stereo, CD/CLK, Bradford built, RC side mount box, shows 47,017 miles, Unit #19108. Notes: PLEASE ALLOW AT LEAST 60 DAYS FOR TITLE TRANSFER. Item Location: Northville, SD 57465 Equipment Sold "AS IS, WHERE IS": All equipment/property is sold "AS IS, WHERE IS" with no warranty or guarantees, expressed or implied, No operational assessments or testing have been made by Del Peterson on this item, it has been photographed ONLY.



---

### #47 - 2007 Kenworth T800 Truck (PZ6526)

2007 Kenworth T800 Truck (PZ6526), Cat C13 Acert diesel engine, 10 speed transmission, air conditioning, heat, Am/Fm CD stereo, cruise control, tandem axle, full screw, air ride suspension, 5th wheel, wet kit, 285/75R24.5 front tires, 275/80R24.5 rear tires, aluminum rims, shows 440,967 miles, 20,078 hours, Unit# 295. Notes: Item Location: Vincent, IA 50594 Equipment Sold "AS IS, WHERE IS": All equipment/property is sold "AS IS, WHERE IS" with no warranty or guarantees, expressed or implied, No operational assessments or testing have been made by Del Peterson on this item, it has been photographed ONLY.



### #48 - 2007 Kenworth T800 Truck (PZ6527)

2007 Kenworth T800 Truck (PZ6527), Cat C13 Acert diesel engine, 10 speed transmission, air conditioning, heat, Am/Fm CD stereo, cruise control, tandem axle, full screw, air ride suspension, 5th wheel, 11R24.5 front tires, 285/75R24.5 rear tires, aluminum rims, shows 437,606 miles, 19,022 hours, Unit# 296. Notes: Item Location: Vincent, IA 50594 Equipment Sold "AS IS, WHERE IS": All equipment/property is sold "AS IS, WHERE IS" with no warranty or guarantees, expressed or implied, No operational assessments or testing have been made by Del Peterson on this item, it has been photographed ONLY.



### #49 - 1992 IHC Truck (PZ6528)

1992 IHC Truck (PZ6528), diesel engine, 7 speed transmission, heat, Am/Fm cassette radio, tandem axle, full screw, 3rd axle, 12R22.5 front tires, 11R22.5 rear tires, 235/75R17.5 cheater tires, shows 269,209 miles, Unit# 418. Notes: Flatbed will be REMOVED from this truck and it will be sold as a CAB/CHASSIS truck. Item Location: Vincent, IA 50594 Equipment Sold "AS IS, WHERE IS": All equipment/property is sold "AS IS, WHERE IS" with no warranty or guarantees, expressed or implied, No operational assessments or testing have been made by Del Peterson on this item, it has been photographed ONLY.



### #50 - 2004 Kenworth T800 Factory Day Cab Truck (NP5006)

2004 Kenworth T800 Factory Day Cab Truck (NP5006), Cat C-12 diesel engine (top end motor just done at CAT), 10 speed transmission, heat, air conditioning, tandem axle, air ride suspension, 5th wheel plate, tilt wheel, 190" wheelbase, 3:70 rear ratio, 14,350 stamped weight, dual stacks, 24.5 tires (ALL NEW), all new brakes, new clutch, shows 93,000 miles. Notes: Over \$13,000 in recent repairs to this truck with receipts. Item Location: Coal Valley, IL 61240 Equipment Sold "AS IS, WHERE IS": All equipment/property is sold "AS IS, WHERE IS" with no warranty or guarantees, expressed or implied, No operational assessments or testing have been made by Del Peterson on this item, it has been photographed ONLY.



### #51 - 2011 Case 3520 Dry Floater (TR3505)

2011 Case 3520 Dry Floater (TR3505), with 810 single bin spreader. 2851 hours, Viper Pro controller, Trimble GPS, box camera, 70 ft. boom foam marker. VIN YBT029496. Records available from local Case equipment supplier. Notes: Item Location: Huron, SD 57350 Equipment Sold "AS IS, WHERE IS": All equipment/property is sold "AS IS, WHERE IS" with no warranty or guarantees, expressed or implied, No operational assessments or testing have been made by Del Peterson on this item, it has been photographed ONLY.



### #52 - 2005 RoGator 1074 Sprayer (PZ6536)

2005 RoGator 1074 Sprayer (PZ6536), Cat diesel engine, hydrostatic transmission, air conditioning, heat, Am/Fm radio, 1080 gallon stainless steel liquid system, 100' boom, foam marker, stainless steel foam marker tank, top poly rinse tank, direct injection tanks, Titan 380/90R46 tires, Raven SCS661 monitor, Raven SCS-Sidekick direct injection, lightbar, shows 3447 hours, Unit# 895. Notes: Item Location: Pomeroy, IA 50575 Equipment Sold "AS IS, WHERE IS": All equipment/property is sold "AS IS, WHERE IS" with no warranty or guarantees, expressed or implied, No operational assessments or testing have been made by Del Peterson on this item, it has been photographed ONLY.



### #53 - 2004 Cat D6R XL Dozer (NP4981)

2004 Cat D6R XL Dozer (NP4981), Cat C-9 diesel engine, 185HP (S/N 4ZF12307), powershift transmission, cab, heat, air conditioning, Am/Fm cassette radio, approx. 24" tracks (Less than 500 hours on NEW tracks), Cat D6RII 3 tooth rear ripper (S/N 3NP01045), Cat 6SU front blade, approx. 124" width (S/N 3RP00704), shows 16,651 hours. Repairs <b2/24/14 - \$58,861 of engine work done by Foley Equipment at 13,327 hours 12/7/15 - \$8,543 spent on NEW tracks installed by Foley Equipment 6/2/16 - \$5,733 spend on follow up engine maintenance by Foley Equipment 9/3/15 - \$7,265 for engine repair by Foley Equipment at 15,028 hours 10/22/15 - \$5,572 spent on starter repair by Foley Equipment at 15,659 hours Notes: All repairs and maintenance are documented and paperwork is available upon request. Please contact Nick @ 402-721-4388 if you wish to have any documentation sent to you. Item Location: Meadville, MO 64659 Equipment Sold "AS IS, WHERE IS": All equipment/property is sold "AS IS, WHERE IS" with no warranty or guarantees, expressed or implied, No operational assessments or testing have been made by Del Peterson on this item, it has been photographed ONLY.



### #54 - 1981 Homemade Trailer (AL)

1981 Homemade Trailer (AL), 30', tandem axle, spring suspension, 4 new tires, 11R225, other tires are over 50% , manual release tailgate, grain door, steel frame, aluminum box. Notes: The hoist was new fall of 2016. Item Location: Clara City, MN 56222 Equipment Sold "AS IS, WHERE IS": All equipment/property is sold "AS IS, WHERE IS" with no warranty or guarantees, expressed or implied, No operational assessments or testing have been made by Del Peterson on this item, it has been photographed ONLY.



### #55 - 2006 Parker 524 Grain Cart (PZ6531)

2006 Parker 524 Grain Cart (PZ6531), 2006 Parker 524 grain cart, single axle, hydraulic side discharge auger, Titan 23.1-26 tires. Notes: Item Location: Maloy, IA 50836 Equipment Sold "AS IS, WHERE IS": All equipment/property is sold "AS IS, WHERE IS" with no warranty or guarantees, expressed or implied, No operational assessments or testing have been made by Del Peterson on this item, it has been photographed ONLY.



---

### #56 - 2002 Vermeer MC1030 Mower Conditioner (PZ6562)

2002 Vermeer MC1030 Mower Conditioner (PZ6562), 2002 Vermeer MC1030 Disc Pro mower conditioner, PTO, 11L-15 flotation tires. Notes: Item Location: Maloy, IA 50836 Equipment Sold "AS IS, WHERE IS": All equipment/property is sold "AS IS, WHERE IS" with no warranty or guarantees, expressed or implied, No operational assessments or testing have been made by Del Peterson on this item, it has been photographed ONLY.



---

### #57 - 2009 H & S X-10 Hay Rake (PZ6533)

2009 H & S X-10 Hay Rake (PZ6533), 2009 H & S model X-10 hay rake, 10 wheel, hydraulic wings, ST175/80D13 tires. Notes: Item Location: Maloy, IA 50836 Equipment Sold "AS IS, WHERE IS": All equipment/property is sold "AS IS, WHERE IS" with no warranty or guarantees, expressed or implied, No operational assessments or testing have been made by Del Peterson on this item, it has been photographed ONLY.



---

### #58 - 2003 John Deere 8120 MFWD Tractor (PZ6529)

2003 John Deere 8120 MFWD Tractor (PZ6529), John Deere diesel engine (S/N RG6081H214914), Powershift transmission, air conditioning, heat, Am/Fm radio, buddy seat, front fenders, PTO, 4 port hydraulics, Firestone 16.9R30 front tires, Firestone 18.4R46 rear dual tires, shows 6672 hours. Notes: Item Location: Maloy, IA 50836 Equipment Sold "AS IS, WHERE IS": All equipment/property is sold "AS IS, WHERE IS" with no warranty or guarantees, expressed or implied, No operational assessments or testing have been made by Del Peterson on this item, it has been photographed ONLY.



---

### #59 - 1992 John Deere 4555 MFWD Tractor (PZ6530)

1992 John Deere 4555 MFWD Tractor (PZ6530), John Deere diesel engine (S/N RG6076T163979), Powershift transmission, air conditioning, heat, Am/Fm radio, front fenders, PTO, 3 port hydraulics, 10 front weights, Agrimax RT855 380/85R30 front tires, Agrimax RT855 480/80R42 rear tires, shows 8265 hours. Notes: Item Location: Maloy, IA 50836 Equipment Sold "AS IS, WHERE IS": All equipment/property is sold "AS IS, WHERE IS" with no warranty or guarantees, expressed or implied, No operational assessments or testing have been made by Del Peterson on this item, it has been photographed ONLY.



---

### #60 - 2009 Kubota L4240HST 4WD Tractor (PZ6535)

2009 Kubota L4240HST 4WD Tractor (PZ6535), Kubota model V2203-M-ET13 diesel engine (S/N 9U1677), hydrostatic transmission, air conditioning, heat, Am/Fm CD stereo, cab, lights, HST response, 1 port hydraulics, side auxiliary hydraulics, 3-point, PTO, 7 suitcase weights, Perko engine kill switch, Titan 29x12.50-15 front tires, Titan 44x18.00-20 rear tires, shows 1385 hours. Notes: Item Location: Keswick, IA 50136 Equipment Sold "AS IS, WHERE IS": All equipment/property is sold "AS IS, WHERE IS" with no warranty or guarantees, expressed or implied, No operational assessments or testing have been made by Del Peterson on this item, it has been photographed ONLY.



---

### #61 - 2000 Peterbilt 379 Day Cab Truck (NP4991)

2000 Peterbilt 379 Day Cab Truck (NP4991), Cat C-12 diesel engine, FRO16210C 10 speed transmission, heat, air conditioning, Am/Fm radio, tandem axle, air ride suspension, 4:11 rears, wet kit, 24.5 tires, aluminum half fenders, dual exhaust, dual breathers, shows 342,533 miles. Notes: Item Location: Coal Valley, IL 61240 Equipment Sold "AS IS, WHERE IS": All equipment/property is sold "AS IS, WHERE IS" with no warranty or guarantees, expressed or implied, No operational assessments or testing have been made by Del Peterson on this item, it has been photographed ONLY.



---

### #62 - Ranger 3" Pump (NP5024)

Ranger 3" Pump (NP5024), PTO shaft, plumbing all included, PTO fits 10 speed transmission. Notes: Item Location: Coal Valley, IL 61240 Equipment Sold "AS IS, WHERE IS": All equipment/property is sold "AS IS, WHERE IS" with no warranty or guarantees, expressed or implied, No operational assessments or testing have been made by Del Peterson on this item, it has been photographed ONLY.



---

### #63 - 2005 Cat 320 CL Excavator (NP4983)

2005 Cat 320 CL Excavator (NP4983), Cat diesel engine (S/N G3430-66), cab, heat, Am/Fm radio, approx. 31.5" tracks, 36" toothed bucket w/ thumb, extra 20" toothed bucket, shows 5,735 hours. Notes: Glass is cracked on cab (see photos). Item Location: Meadville, MO 64659 Equipment Sold "AS IS, WHERE IS": All equipment/property is sold "AS IS, WHERE IS" with no warranty or guarantees, expressed or implied, No operational assessments or testing have been made by Del Peterson on this item, it has been photographed ONLY.



---

### #64 - AutoProbe (PZ6534)

AutoProbe (PZ6534), AutoProbe on the go soil sampling, 3-point, hydraulic, single track, Roots rotary lobe blower, AgRobotics screen, AgRobotics control panel. Notes: Item Location: Keswick, IA 50136 Equipment Sold "AS IS, WHERE IS": All equipment/property is sold "AS IS, WHERE IS" with no warranty or guarantees, expressed or implied, No operational assessments or testing have been made by Del Peterson on this item, it has been photographed ONLY.





---

### #65 - 2012 FLX 3530 liquid floater (TR3506)

2012 FLX 3530 liquid floater (TR3506), 1040 hours, 610 liquid system w/2000 gallon tank, 65-85 boom, Viper controller, Accuboom, Smart Trax light bar, Raven one product sidekick, 135 gallon freshwater tank w/ pump for washing. Product pump needs replacing and a new one is included. VIN# YCT032350. Records available from local Case equipment supplier. Notes: Item Location: Huron, SD 57350 Equipment Sold "AS IS, WHERE IS": All equipment/property is sold "AS IS, WHERE IS" with no warranty or guarantees, expressed or implied, No operational assessments or testing have been made by Del Peterson on this item, it has been photographed ONLY.



---

### #66 - 2014 Ford Edge AWD (TR3507)

2014 Ford Edge AWD (TR3507), gas engine, automatic transmission, heat/ac, am/fm cd player, cruise control, steering wheel controls, cloth interior, AWD, Near new tires, recently Serviced and detailed, 50,036 miles. Notes: Item Location: Oakland, NE 68045 Equipment Sold "AS IS, WHERE IS": All equipment/property is sold "AS IS, WHERE IS" with no warranty or guarantees, expressed or implied, No operational assessments or testing have been made by Del Peterson on this item, it has been photographed ONLY.



---

### #67 - 2016 Challenger Car Hoist (TR3508)

2016 Challenger Car Hoist (TR3508), 2 Post 10,000 lb capacity, 3 stage front and rear arms, Rise height of 13'8", 11'10" width, 103.5" drive through clearance, adapters for car height clearance included, organizing rack. Notes: Only used twice. See brochure for specs. Will help with loading of hoist if needed. Air compressor available for buyer to use for impact tools. Item Location: Oakland, NE 68045 Equipment Sold "AS IS, WHERE IS": All equipment/property is sold "AS IS, WHERE IS" with no warranty or guarantees, expressed or implied, No operational assessments or testing have been made by Del Peterson on this item, it has been photographed ONLY.



---

### #68 - 2008 Great Dane Van Trailer (TR3510)

2008 Great Dane Van Trailer (TR3510), 53' x 102", air ride suspension, adjustable axle, wood floor, roll up door. Notes: Item Location: Wathena, KS 66090 Equipment Sold "AS IS, WHERE IS": All equipment/property is sold "AS IS, WHERE IS" with no warranty or guarantees, expressed or implied, No operational assessments or testing have been made by Del Peterson on this item, it has been photographed ONLY.



---

### #69 - 2009 RoGator SS1084 Sprayer (NJP362)

2009 RoGator SS1084 Sprayer (NJP362), Cat diesel engine, hydrostatic transmission, air conditioning, heat, Am/Fm CD stereo, 1080 gallon stainless steel liquid system, 100' boom, foam marker, stainless steel foam marker tank, top poly rinse tank, Firestone 380/90R46 tires @ 85%, front drivers tire just replaced, Raven SmartTrax, Raven Viper Pro Monitor, shows 2679 hours. Notes: Item Location: Harritown, IL 62537 Equipment Sold "AS IS, WHERE IS": All equipment/property is sold "AS IS, WHERE IS" with no warranty or guarantees, expressed or implied, No operational assessments or testing have been made by Del Peterson on this item, it has been photographed ONLY.



---

### #70 - Melroe Spra-Coupe 3630 (CG230)

Melroe Spra-Coupe 3630 (CG230), turbo diesel engine, manual transmission, Bord-Warner T-5, Raven mapping system, 60 ft hydraulic fold booms, shows 1071 hours. Notes: Item Location: Red Oak, IA 51566 Equipment Sold "AS IS, WHERE IS": All equipment/property is sold "AS IS, WHERE IS" with no warranty or guarantees, expressed or implied, No operational assessments or testing have been made by Del Peterson on this item, it has been photographed ONLY.



---

### #71 - Case Patriot 3320 Hood (MH189)

Case Patriot 3320 Hood (MH189), hood for a Case 3320 Patriot, great condition. Notes: Item Location: Farmington, IL 61531 Equipment Sold "AS IS, WHERE IS": All equipment/property is sold "AS IS, WHERE IS" with no warranty or guarantees, expressed or implied, No operational assessments or testing have been made by Del Peterson on this item, it has been photographed ONLY.



---

### #72 - 2010 Kuhn Knight Feed Wagon (NP4992)

2010 Kuhn Knight Feed Wagon (NP4992), Model Reel Commercial RC170, 700 cubic feet capacity, HD Drive, hydraulic, digital scale with remote reel, 2 side mix augers, tandem axle, 445/65R22.5 tires, 2 tires 50%, 2 tires 80%, very clean, little wear. Notes: Item Location: Oakland, NE 68045 Equipment Sold "AS IS, WHERE IS": All equipment/property is sold "AS IS, WHERE IS" with no warranty or guarantees, expressed or implied, No operational assessments or testing have been made by Del Peterson on this item, it has been photographed ONLY.



### #73 - Apache Creep/Self Feeder (NP4993)

Apache Creep/Self Feeder (NP4993), Model CF8A150, 8' length, 150 bushel capacity, 12 gauge pan & floor, 2" heavy duty spindles, single axle, 9.5L-15 tires, 7,500lb capacity axles. Notes: NEW, NEVER USED. Item Location: Oakland, NE 68045 Equipment Sold "AS IS, WHERE IS": All equipment/property is sold "AS IS, WHERE IS" with no warranty or guarantees, expressed or implied, No operational assessments or testing have been made by Del Peterson on this item, it has been photographed ONLY.



### #74 - Apache Feeder Wagon (NP4997)

Apache Feeder Wagon (NP4997), Model WFW20A1, 20' length, 12 gauge pan, heavy duty 2" spindles, all tubing is vented, tongue extension, "Z" bar slants, NEW 9.5L-15 tires. Notes: NEW, NEVER USED. Item Location: Oakland, NE 68045 Equipment Sold "AS IS, WHERE IS": All equipment/property is sold "AS IS, WHERE IS" with no warranty or guarantees, expressed or implied, No operational assessments or testing have been made by Del Peterson on this item, it has been photographed ONLY.



### #75 - 2007 Chevy Silverado (DR6422)

2007 Chevy Silverado (DR6422), 5.3 liter gas engine, automatic transmission, Z-71 crew cab, 4X4, chrome running boards, rear receiver hitch, tonneau cover, power drivers seat, AM/FM CD radio, air conditioning, power windows & locks, 275/65R18 tires, shows 304,152 miles. Notes: Item Location: Allen, NE 68710 Equipment Sold "AS IS, WHERE IS": All equipment/property is sold "AS IS, WHERE IS" with no warranty or guarantees, expressed or implied, No operational assessments or testing have been made by Del Peterson on this item, it has been photographed ONLY.



### #76 - 2001 Ford F250 (DR6423)

2001 Ford F250 (DR6423), 7.3 diesel engine, (needs work), automatic transmission (has been rebuilt), 4X4, quad cab, chrome nerf bar running boards, cast aluminum wheels, set up for heavy haul air ride suspension, heavy duty NEW leaf springs, rear receiver hitch, sliding rear window, 5th wheel ball, AM/FM CD radio, air conditioning, 305/70R16 tires, shows 214,786 miles. Notes: Pickup will run but DOES NEED injector work. Item Location: Allen, NE 68710 Equipment Sold "AS IS, WHERE IS": All equipment/property is sold "AS IS, WHERE IS" with no warranty or guarantees, expressed or implied, No operational assessments or testing have been made by Del Peterson on this item, it has been photographed ONLY.



### #77 - Kraus Dry Blender (PZ6423)

Kraus Dry Blender (PZ6423), Kraus 6 ton vertical stainless steel dry blender, stainless steel hopper, Kraus approx. 30' x 24" stainless steel loadout conveyor. Notes: This blender must be removed by September 30, 2017 with NO exceptions. Dismantle, removal and transportation is at the expense, risk and liability of the buyer. Proof of insurance will need to be provided before removal starts. Item Location: Clermont, IA 52135 Equipment Sold "AS IS, WHERE IS": All equipment/property is sold "AS IS, WHERE IS" with no warranty or guarantees, expressed or implied, No operational assessments or testing have been made by Del Peterson on this item, it has been photographed ONLY.



### #78 - Kraus Under Car Conveyor (PZ6424)

Kraus Under Car Conveyor (PZ6424), Kraus stainless steel undercar conveyor, Baldor 5hp electric motor. Notes: This conveyor must be removed by September 30, 2017 with NO exceptions. Dismantle, removal and transportation is at the expense, risk and liability of the buyer. Proof of insurance will need to be provided before removal starts. Item Location: Clermont, IA 52135 Equipment Sold "AS IS, WHERE IS": All equipment/property is sold "AS IS, WHERE IS" with no warranty or guarantees, expressed or implied, No operational assessments or testing have been made by Del Peterson on this item, it has been photographed ONLY.



### #79 - Waconia Stainless Steel Leg (PZ6429)

Waconia Stainless Steel Leg (PZ6429), Waconia approx. 70' stainless steel leg, 7 stainless steel down spouts, distributor. Notes: This leg must be removed by September 30, 2017 with NO exceptions. Dismantle, removal and transportation is at the expense, risk and liability of the buyer. Proof of insurance will need to be provided before removal starts. Item Location: Arlington, IA 50606 Equipment Sold "AS IS, WHERE IS": All equipment/property is sold "AS IS, WHERE IS" with no warranty or guarantees, expressed or implied, No operational assessments or testing have been made by Del Peterson on this item, it has been photographed ONLY.



### #80 - Kraus Under Car Conveyor (PZ6430)

Kraus Under Car Conveyor (PZ6430), Kraus stainless steel undercar conveyor, Toshiba 5hp electric motor. Notes: This conveyor must be removed by September 30, 2017 with NO exceptions. Dismantle, removal and transportation is at the expense, risk and liability of the buyer. Proof of insurance will need to be provided before removal starts. Item Location: Arlington, IA 50606 Equipment Sold "AS IS, WHERE IS": All equipment/property is sold "AS IS, WHERE IS" with no warranty or guarantees, expressed or implied, No operational assessments or testing have been made by Del Peterson on this item, it has been photographed ONLY.



### #81 - 2016 Kelly Ryan Feed Wagon (NP4998)

2016 Kelly Ryan Feed Wagon (NP4998), Model 5 x 12-16, 190 bushel, apron chain (pintle on 5' width), oil bath gear box, shear pin PTO, single axle, 295/75R22.5 tires. Notes: NEW, NEVER USED. Item Location: Oakland, NE 68045 Equipment Sold "AS IS, WHERE IS": All equipment/property is sold "AS IS, WHERE IS" with no warranty or guarantees, expressed or implied, No operational assessments or testing have been made by Del Peterson on this item, it has been photographed ONLY.



### #82 - Henke Buffalo Roller Mill (NP4994)

Henke Buffalo Roller Mill (NP4994), Model 718, 8" intake auger, 18" roller, single axle. Notes: NEW, NEVER USED. Item Location: Oakland, NE 68045 Equipment Sold "AS IS, WHERE IS": All equipment/property is sold "AS IS, WHERE IS" with no warranty or guarantees, expressed or implied, No operational assessments or testing have been made by Del Peterson on this item, it has been photographed ONLY.



### #83 - Silex QR12 Hay Rake (NP4996)

Silex QR12 Hay Rake (NP4996), 12 wheel rake, 55" "V" type wheels, hydraulic lift and fold, 15" tires, 25' walking width, Notes: New Demo Unit. Item Location: Oakland, NE 68045 Equipment Sold "AS IS, WHERE IS": All equipment/property is sold "AS IS, WHERE IS" with no warranty or guarantees, expressed or implied, No operational assessments or testing have been made by Del Peterson on this item, it has been photographed ONLY.



### #84 - Waconia Drum Blender (PZ6431)

Waconia Drum Blender (PZ6431), Waconia 8 ton stainless steel drum blender, stainless steel hopper, approx. 30' x 24" stainless steel loadout conveyor, digital readout. Notes: This blender must be removed by September 30, 2017 with NO exceptions. Dismantle, removal and transportation is at the expense, risk and liability of the buyer. Proof of insurance will need to be provided before removal starts. Item Location: Arlington, IA 50606 Equipment Sold "AS IS, WHERE IS": All equipment/property is sold "AS IS, WHERE IS" with no warranty or guarantees, expressed or implied, No operational assessments or testing have been made by Del Peterson on this item, it has been photographed ONLY.



### #85 - Waconia Drum Blender (PZ6432)

Waconia Drum Blender (PZ6432), Waconia 8 ton stainless steel drum blender, stainless steel hopper, Tyler approx. 30' x 24" stainless steel loadout conveyor, digital readout. Notes: This blender must be removed by September 30, 2017 with NO exceptions. Dismantle, removal and transportation is at the expense, risk and liability of the buyer. Proof of insurance will need to be provided before removal starts. Item Location: Arlington, IA 50606 Equipment Sold "AS IS, WHERE IS": All equipment/property is sold "AS IS, WHERE IS" with no warranty or guarantees, expressed or implied, No operational assessments or testing have been made by Del Peterson on this item, it has been photographed ONLY.



### #86 - Kraus Under Car Conveyor (PZ6433)

Kraus Under Car Conveyor (PZ6433), Kraus stainless steel undercar conveyor, Toshiba 5hp electric motor. Notes: Item Location: Arlington, IA 50606 Equipment Sold "AS IS, WHERE IS": All equipment/property is sold "AS IS, WHERE IS" with no warranty or guarantees, expressed or implied, No operational assessments or testing have been made by Del Peterson on this item, it has been photographed ONLY.



### #87 - 2008 Ford F150 XLT Extended Cab Pickup (PZ6426)

2008 Ford F150 XLT Extended Cab Pickup (PZ6426), 4x4, 5.4 Triton gas engine, automatic transmission, air conditioning, heat, Am/Fm CD stereo, cruise control, power windows & locks, 275/65R18 tires, shows 246,091 miles, Unit# 1104. Notes: Noise in rear end. Item Location: Arlington, IA 50606 Equipment Sold "AS IS, WHERE IS": All equipment/property is sold "AS IS, WHERE IS" with no warranty or guarantees, expressed or implied, No operational assessments or testing have been made by Del Peterson on this item, it has been photographed ONLY.



### #88 - 1999 Ford F350 XL Super Duty Flatbed (PZ6427)

1999 Ford F350 XL Super Duty Flatbed (PZ6427), 4x4, Power Stroke diesel engine, manual transmission, heat, Am/Fm, radio, dually, steel flatbed, 5th wheel ball, running boards, LT235/85R16 tires, shows 270,000 miles, Unit# 1146. Notes: Item Location: Arlington, IA 50606 Equipment Sold "AS IS, WHERE IS": All equipment/property is sold "AS IS, WHERE IS" with no warranty or guarantees, expressed or implied, No operational assessments or testing have been made by Del Peterson on this item, it has been photographed ONLY.



### #89 - 2003 Chevrolet 2500HD Pickup (PZ6428)

2003 Chevrolet 2500HD Pickup (PZ6428), 4x4, gas engine, automatic transmission, air conditioning, heat, Am/Fm radio, cruise control, LT235/85R16 front tires, LT245/75R16 rear tires, Unit# 1130. Notes: Item Location: Arlington, IA 50606 Equipment Sold "AS IS, WHERE IS": All equipment/property is sold "AS IS, WHERE IS" with no warranty or guarantees, expressed or implied, No operational assessments or testing have been made by Del Peterson on this item, it has been photographed ONLY.



### #90 - 2014 Silex Columbia TR/7 Hay Rake (NP4999)

2014 Silex Columbia TR/7 Hay Rake (NP4999), 9 wheel rake, hydraulic lift, 14 MPH operating speed, 18' working width. Notes: New Demo Unit. Item Location: Oakland, NE 68045 Equipment Sold "AS IS, WHERE IS": All equipment/property is sold "AS IS, WHERE IS" with no warranty or guarantees, expressed or implied, No operational assessments or testing have been made by Del Peterson on this item, it has been photographed ONLY.



### #91 - Priefert Squeeze Chute (NP5000)

Priefert Squeeze Chute (NP5000), Model S0191, manual or automatic operation, 78" height, 90" length, 42" width, 75R22.5 tires, comes with wish bone carriage. Notes: NEW, NEVER USED. Item Location: Oakland, NE 68045 Equipment Sold "AS IS, WHERE IS": All equipment/property is sold "AS IS, WHERE IS" with no warranty or guarantees, expressed or implied, No operational assessments or testing have been made by Del Peterson on this item, it has been photographed ONLY.



### #92 - 2011 Kelly Ryan Manure Spreader (NP5001)

2011 Kelly Ryan Manure Spreader (NP5001), Model 4 x 136-11, single beater floor chain, 4 x 13' 6" dimensions, 12.5L-15SL tires, 540 PTO drive. Notes: NEW, NEVER USED. Item Location: Oakland, NE 68045 Equipment Sold "AS IS, WHERE IS": All equipment/property is sold "AS IS, WHERE IS" with no warranty or guarantees, expressed or implied, No operational assessments or testing have been made by Del Peterson on this item, it has been photographed ONLY.



### #93 - 2011 Ford F150 XLT Super Crew Pickup (PZ6420)

2011 Ford F150 XLT Super Crew Pickup (PZ6420), 4x4, Ecoboost 3.5L V6 gas engine, automatic transmission, air conditioning, heat, Am/Fm CD stereo, cruise control, power windows & locks, power driver side seat, spray in bed liner, fog lights, running boards, 275/65R18 tires, shows 102,838 miles, Unit# 1162. Notes: Item Location: Marble Rock, IA 50653 Equipment Sold "AS IS, WHERE IS": All equipment/property is sold "AS IS, WHERE IS" with no warranty or guarantees, expressed or implied, No operational assessments or testing have been made by Del Peterson on this item, it has been photographed ONLY.



### #94 - 1995 Chevrolet 2500 Pickup (PZ6425)

1995 Chevrolet 2500 Pickup (PZ6425), 4x4, gas engine, automatic transmission, air conditioning, heat, Am/Fm cassette radio, LT245/75R16 tires, shows 231,148 miles, Unit# 1092. Notes: Non Runner, no end gate. Item Location: Maynard, IA 50655 Equipment Sold "AS IS, WHERE IS": All equipment/property is sold "AS IS, WHERE IS" with no warranty or guarantees, expressed or implied, No operational assessments or testing have been made by Del Peterson on this item, it has been photographed ONLY.



### #95 - 2001 Mack Model LE613 Dry Tender Truck (PZ6422)

2001 Mack Model LE613 Dry Tender Truck (PZ6422), diesel engine, Allison automatic transmission, heat, Am/Fm cassette radio, tandem axle, full screw, Willmar 16 ton dry tender box, 2 compartment, rear discharge auger, all hydraulic, roll over tarp, 315/80R22.5 tires, shows 144,197 miles, Unit# 2228. Notes: Item Location: Clermont, IA 52135 Equipment Sold "AS IS, WHERE IS": All equipment/property is sold "AS IS, WHERE IS" with no warranty or guarantees, expressed or implied, No operational assessments or testing have been made by Del Peterson on this item, it has been photographed ONLY.



### #96 - 2000 Sterling Feed Truck (PZ6421)

2000 Sterling Feed Truck (PZ6421), Cat C-12 diesel engine, 13 speed transmission, air conditioning, heat, Am/Fm radio, cruise control, power windows, tandem axle, full screw, air ride suspension, Warren model A-20-SER4 aluminum bulk feed body, 5 compartment, hydraulic auger, S/N 5023, 385/65R22.5 front tires, 11R22.5 rear tires, shows 506,497 miles, Unit# 2172. Notes: Item Location: Clermont, IA 52135 Equipment Sold "AS IS, WHERE IS": All equipment/property is sold "AS IS, WHERE IS" with no warranty or guarantees, expressed or implied, No operational assessments or testing have been made by Del Peterson on this item, it has been photographed ONLY.



### #97 - 2010 Wintersteiger Research Planter (NP5003)

2010 Wintersteiger Research Planter (NP5003), Model Dynamic Disc, 2 row, 20" to 40" row width, 8' implement width. Notes: Item Location: Tifton, GA 31793 Equipment Sold "AS IS, WHERE IS": All equipment/property is sold "AS IS, WHERE IS" with no warranty or guarantees, expressed or implied, No operational assessments or testing have been made by Del Peterson on this item, it has been photographed ONLY.



### #98 - Kelly Ryan Manure Spreader (NP5002)

Kelly Ryan Manure Spreader (NP5002), 5 x 13' 6" dimensions, poly floor, single beater chain floor, 540 PTO drive, 295/75R22.5 tires. Notes: NEW, NEVER USED. Item Location: Oakland, NE 68045 Equipment Sold "AS IS, WHERE IS": All equipment/property is sold "AS IS, WHERE IS" with no warranty or guarantees, expressed or implied, No operational assessments or testing have been made by Del Peterson on this item, it has been photographed ONLY.





---

### #99 - Balzer Pump (NP4995)

Balzer Pump (NP4995), 1000RPM, Buckhead 6" intake, tee with 4" & 6" discharge gave valve, power priming system, 6" x 16" suction hose. Notes: NEW, NEVER USED. Item Location: Oakland, NE 68045 Equipment Sold "AS IS, WHERE IS": All equipment/property is sold "AS IS, WHERE IS" with no warranty or guarantees, expressed or implied, No operational assessments or testing have been made by Del Peterson on this item, it has been photographed ONLY.



---

### #100 - 2002 Chevy C7500 4x2 (MH190)

2002 Chevy C7500 4x2 (MH190), CAT 3126 diesel engine, Eaton Fuller transmission, air brakes, 30,000lb truck, 10,000lb front axle, 20,000lb rear, 18' steel platform & hoist, tires in good condition, truck was bought new, owners installed steel platform & hoist, shows 99,989 miles. Notes: Truck is still in use, mileage may vary. Item Location: Elwood, KS 66024 Equipment Sold "AS IS, WHERE IS": All equipment/property is sold "AS IS, WHERE IS" with no warranty or guarantees, expressed or implied, No operational assessments or testing have been made by Del Peterson on this item, it has been photographed ONLY.



---

### #101 - 2007 Nissan Sentra 2.0 S (TH146)

2007 Nissan Sentra 2.0 S (TH146), 2.0L I4 DOHC 16v, AM/FM, has a new fuel pump, ball joints and tires on it since February, shows 227,000 miles. Notes: Runs good. This car was used to drive from Sterling, IL to Chicago two or three days a week.. Car gets great fuel mileage. Clear title in hand. The right rear door has a couple of deep scratches in it, see picture. Item Location: Sterling, IL 61081 Equipment Sold "AS IS, WHERE IS": All equipment/property is sold "AS IS, WHERE IS" with no warranty or guarantees, expressed or implied, No operational assessments or testing have been made by Del Peterson on this item, it has been photographed ONLY.



---

### #102 - Bale Clamp (KMK1015)

Bale Clamp (KMK1015), 15 bale clamp, designed for New Holland bale wagon. Notes: Item Location: Mankato, KS 66956 Equipment Sold "AS IS, WHERE IS": All equipment/property is sold "AS IS, WHERE IS" with no warranty or guarantees, expressed or implied, No operational assessments or testing have been made by Del Peterson on this item, it has been photographed ONLY.



---

### #103 - 1967 New Holland 1047 Bale Wagon (KMK1016)

1967 New Holland 1047 Bale Wagon (KMK1016), engine rebuilt 10 years ago, newer brakes, good running machine, everything works as it should, bale wagon hasn't been used in 5 years. Notes: Engine only has 5 years use on it. Item Location: Mankato, KS 66956 Equipment Sold "AS IS, WHERE IS": All equipment/property is sold "AS IS, WHERE IS" with no warranty or guarantees, expressed or implied, No operational assessments or testing have been made by Del Peterson on this item, it has been photographed ONLY.



---

### #104 - 3-Phase Clausen Lathe w/ Stand (KMK1017)

3-Phase Clausen Lathe w/ Stand (KMK1017), lathe has 3-phase motor. Notes: Item Location: Mankato, KS 66956 Equipment Sold "AS IS, WHERE IS": All equipment/property is sold "AS IS, WHERE IS" with no warranty or guarantees, expressed or implied, No operational assessments or testing have been made by Del Peterson on this item, it has been photographed ONLY.



---

### #105 - Lincoln Arc Welder w/ Trailer (KMK1014)

Lincoln Arc Welder w/ Trailer (KMK1014), 250 amp, V-4 Wisconsin engine, DC welder. Notes: NO TITLE. Item Location: Mankato, KS 66956 Equipment Sold "AS IS, WHERE IS": All equipment/property is sold "AS IS, WHERE IS" with no warranty or guarantees, expressed or implied, No operational assessments or testing have been made by Del Peterson on this item, it has been photographed ONLY.



---

### #106 - Miller S-64M Welder (KMK1018)

Miller S-64M Welder (KMK1018), 10 amp, 50/60 hertz, 24 volt, custom built reel and rack. Notes: Item Location: Mankato, KS 66956 Equipment Sold "AS IS, WHERE IS": All equipment/property is sold "AS IS, WHERE IS" with no warranty or guarantees, expressed or implied, No operational assessments or testing have been made by Del Peterson on this item, it has been photographed ONLY.



---

### #107 - Grove MZ116DXT Manlift (NJP358)

Grove MZ116DXT Manlift (NJP358), 4x4, diesel engine, hydrostatic transmission, stabilizers, 116' reach, dual controls, 13.00R20 all-terrain tires, shows 1130 hours. Notes: Item Location: Dongola, IL 62926 Equipment Sold "AS IS, WHERE IS": All equipment/property is sold "AS IS, WHERE IS" with no warranty or guarantees, expressed or implied, No operational assessments or testing have been made by Del Peterson on this item, it has been photographed ONLY.



---

### #108 - 2006 Schien Frame Trailer (NJP349)

2006 Schien Frame Trailer (NJP349), 29', tandem axle, air ride suspension, landing gear, 11R22.5 tires, aluminum disc wheels. Notes: Item Location: Dongola, IL 62926 Equipment Sold "AS IS, WHERE IS": All equipment/property is sold "AS IS, WHERE IS" with no warranty or guarantees, expressed or implied, No operational assessments or testing have been made by Del Peterson on this item, it has been photographed ONLY.



---

### #109 - 1979 Steel End Dump Trailer (NJP355)

1979 Steel End Dump Trailer (NJP355), 30' end dump trailer, full frame, tandem axle, spring ride suspension, tires 11R24.5. Notes: Item Location: Dongola, IL 62926 Equipment Sold "AS IS, WHERE IS": All equipment/property is sold "AS IS, WHERE IS" with no warranty or guarantees, expressed or implied, No operational assessments or testing have been made by Del Peterson on this item, it has been photographed ONLY.



---

### #110 - 2000 Sterling Daycab Truck (NJP339)

2000 Sterling Daycab Truck (NJP339), 3126 Cat diesel engine, 6 speed transmission, heat, Am/Fm radio, single axle, spring suspension, 153" WB, 33,000 GVW, sliding 5th wheel, 11R22.5 tires, shows 222,362 miles. Notes: Item Location: Dongola, IL 62926 Equipment Sold "AS IS, WHERE IS": All equipment/property is sold "AS IS, WHERE IS" with no warranty or guarantees, expressed or implied, No operational assessments or testing have been made by Del Peterson on this item, it has been photographed ONLY.



---

### #112 - 2000 Dodge Ram 2500 (RMC071)

2000 Dodge Ram 2500 (RMC071), 4x4, AM/FM, CD/Cassette, 5 speed manual, heat/AC, power seats, leather, extended cab, shows 229508 miles. Notes: CLUTCH IN THIS TRUCK IS OUT. Item Location: Lake Village, AR 71653 Equipment Sold "AS IS, WHERE IS": All equipment/property is sold "AS IS, WHERE IS" with no warranty or guarantees, expressed or implied, No operational assessments or testing have been made by Del Peterson on this item, it has been photographed ONLY.



---

### #113 - Jacobsen Hammermill (TR3498)

Jacobsen Hammermill (TR3498), 40 HP, 3 phase. Notes: Item Location: Craig, NE 68019 Equipment Sold "AS IS, WHERE IS": All equipment/property is sold "AS IS, WHERE IS" with no warranty or guarantees, expressed or implied, No operational assessments or testing have been made by Del Peterson on this item, it has been photographed ONLY.



---

### #114 - 28 Ton Log Splitter, (TR3500)

28 Ton Log Splitter, (TR3500), Model GB28T25L, 7 hp Subaru gas engine, Tail lights, 25" Split Length, 16" Split diameter, Auto return. Notes: Item Location: Story City, IA 50248 Equipment Sold "AS IS, WHERE IS": All equipment/property is sold "AS IS, WHERE IS" with no warranty or guarantees, expressed or implied, No operational assessments or testing have been made by Del Peterson on this item, it has been photographed ONLY.



---

### #115 - 16 Ton Log Splitter (TR3501)

16 Ton Log Splitter (TR3501), Dual Action, Model: GD16T21, 6.5 hp gas engine, 21" Split Length, 13.5" Split diameter, Dual Action. Notes: Item Location: Story City, IA 50248 Equipment Sold "AS IS, WHERE IS": All equipment/property is sold "AS IS, WHERE IS" with no warranty or guarantees, expressed or implied, No operational assessments or testing have been made by Del Peterson on this item, it has been photographed ONLY.



---

### #116 - 2005 Volvo Daycab Truck (NJP360)

2005 Volvo Daycab Truck (NJP360), VE D12 365 hp diesel engine, 8LL speed transmission, air conditioning, heat, Am/Fm cassette radio, tandem axle, full screw, air ride suspension, 190" WB, 3.90 ratio, 12,000 lb front axle, 19,000 lb rear axle, 5th wheel plate, 295/75R22.5 tires, shows 561,684 miles. Notes: Air conditioner needs charged. Item Location: Dongola, IL 62926 Equipment Sold "AS IS, WHERE IS": All equipment/property is sold "AS IS, WHERE IS" with no warranty or guarantees, expressed or implied, No operational assessments or testing have been made by Del Peterson on this item, it has been photographed ONLY.



---

### #117 - 2006 Freightliner Business Class M2 Dump Truck (NJP340)

2006 Freightliner Business Class M2 Dump Truck (NJP340), C-7 Cat diesel engine, Allison 5 speed automatic transmission, air conditioning, heat, Am/Fm cassette radio, single axle, air ride suspension, 150" WB, 3.90 ratio, 12,000 lb front axle, 20,000 lb rear axle, New Gravel Star 10' steel rock bed, 30" sides, New electric roll over tarp, pintal hitch, 295/75R22.5, shows 224,784 miles. Notes: Air conditioner needs charged. Item Location: Dongola, IL 62926 Equipment Sold "AS IS, WHERE IS": All equipment/property is sold "AS IS, WHERE IS" with no warranty or guarantees, expressed or implied, No operational assessments or testing have been made by Del Peterson on this item, it has been photographed ONLY.



---

### #118 - 1998 Freightliner FL106 Dump Truck (NJP345)

1998 Freightliner FL106 Dump Truck (NJP345), Detroit Series 50 4 cylinder 320 hp diesel engine, Fuller 9 speed transmission, heat, Am/Fm cassette radio, single axle, air ride suspension, 148" WB, 3.21 ratio, 12,000 lb front axle, 23,000 rear axle, New Gravel Star 10' steel rock bed, 30" sides, pintal hitch, 295/75R22.5 tires, shows 328,693 miles. Notes: Item Location: Dongola, IL 62926 Equipment Sold "AS IS, WHERE IS": All equipment/property is sold "AS IS, WHERE IS" with no warranty or guarantees, expressed or implied, No operational assessments or testing have been made by Del Peterson on this item, it has been photographed ONLY.



---

### #119 - 1991 Ford F600 Dump Truck (NJP356)

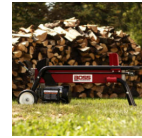
1991 Ford F600 Dump Truck (NJP356), Ford 6.0 diesel engine, 5 speed transmission, heat, Am/Fm radio, single axle, spring ride suspension, 155" WB, 21,000 GVW, 10' steel dump box, 11R22.5 tires, shows 185,467 miles. Notes: Item Location: Dongola, IL 62926 Equipment Sold "AS IS, WHERE IS": All equipment/property is sold "AS IS, WHERE IS" with no warranty or guarantees, expressed or implied, No operational assessments or testing have been made by Del Peterson on this item, it has been photographed ONLY.



---

### #120 - Boss Industrial 7 Ton Electric Log Splitter (TR3502)

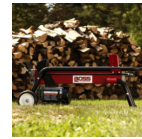
Boss Industrial 7 Ton Electric Log Splitter (TR3502), 2.0 hp electric motor, 20.5" Split Length, 10" Split diameter. Notes: Item Location: Story City, IA 50248 Equipment Sold "AS IS, WHERE IS": All equipment/property is sold "AS IS, WHERE IS" with no warranty or guarantees, expressed or implied, No operational assessments or testing have been made by Del Peterson on this item, it has been photographed ONLY.



---

### #121 - Boss Industrial 7 Ton Electric Log Splitter (TR3503)

Boss Industrial 7 Ton Electric Log Splitter (TR3503), 2.0 hp electric motor, 20.5" Split Length, 10" Split diameter. Notes: Item Location: Story City, IA 50248 Equipment Sold "AS IS, WHERE IS": All equipment/property is sold "AS IS, WHERE IS" with no warranty or guarantees, expressed or implied, No operational assessments or testing have been made by Del Peterson on this item, it has been photographed ONLY.



---

### #122 - New Holland 791 Spreader (DR6396)

New Holland 791 Spreader (DR6396), tandem axle manure spreader, poly lined floor, dual rear beaters, 10.00-20 tires. Notes: Item Location: Prairie City, SD 57649 Equipment Sold "AS IS, WHERE IS": All equipment/property is sold "AS IS, WHERE IS" with no warranty or guarantees, expressed or implied, No operational assessments or testing have been made by Del Peterson on this item, it has been photographed ONLY.



---

### #123 - John Deere Packer (DR6397)

John Deere Packer (DR6397), 10' double packer, hydraulic middle chisel. Notes: Item Location: Prairie City, SD 57649 Equipment Sold "AS IS, WHERE IS": All equipment/property is sold "AS IS, WHERE IS" with no warranty or guarantees, expressed or implied, No operational assessments or testing have been made by Del Peterson on this item, it has been photographed ONLY.



---

### #124 - Melroe 403 Harrow (DR6398)

Melroe 403 Harrow (DR6398), 60' folding harrow, 5 bar sections. Notes: Can be taken apart for hauling. Item Location: Prairie City, SD 57649 Equipment Sold "AS IS, WHERE IS": All equipment/property is sold "AS IS, WHERE IS" with no warranty or guarantees, expressed or implied, No operational assessments or testing have been made by Del Peterson on this item, it has been photographed ONLY.



---

### #125 - International 4130 (DR6395)

International 4130 (DR6395), Onan gas engine, hydrostatic drive, OROPS, 4.5' front bucket & hydraulic grapple, auxiliary hydraulic outlets, 26X12.00-12 tires, shows 1465 hours, engine was replaced @ 700 hours. Notes: Item Location: Prairie City, SD 57649 Equipment Sold "AS IS, WHERE IS": All equipment/property is sold "AS IS, WHERE IS" with no warranty or guarantees, expressed or implied, No operational assessments or testing have been made by Del Peterson on this item, it has been photographed ONLY.



---

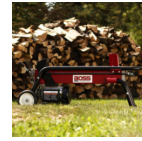
### #126 - Case 2294 MFWD (DR6394)

Case 2294 MFWD (DR6394), MFWD tractor, diesel engine, Dual 310 hydraulic front end loader, 8.5' front bucket & grapple, dual hydraulic outlets, rear 3 point hitch, PTO, AM/FM radio, cab heat/air conditioning, 16.9-28 front tires, 20.8-38 rear tires, shows 2172 hours not actual. Notes: Rear bale carrier DOES NOT SELL. Item Location: Prairie City, SD 57649 Equipment Sold "AS IS, WHERE IS": All equipment/property is sold "AS IS, WHERE IS" with no warranty or guarantees, expressed or implied, No operational assessments or testing have been made by Del Peterson on this item, it has been photographed ONLY.



### #127 - Boss Industrial 7 Ton Electric Log Splitter (TR3504)

Boss Industrial 7 Ton Electric Log Splitter (TR3504), 2.0 hp electric motor, 20.5" Split Length, 10" Split diameter. Notes: Item Location: Story City, IA 50248 Equipment Sold "AS IS, WHERE IS": All equipment/property is sold "AS IS, WHERE IS" with no warranty or guarantees, expressed or implied, No operational assessments or testing have been made by Del Peterson on this item, it has been photographed ONLY.



### #128 - 2006 Sterling LT9500 Grain Truck (NJP342)

2006 Sterling LT9500 Grain Truck (NJP342), Cat C-13 diesel engine, Allison RDS 4000 automatic transmission, air conditioning, heat, Am/Fm cassette radio, tandem axle, full screw, air ride suspension, lift tag axle, 280" WB, 4.88 ratio, 14,700 lb front axle, 20,000 lb rear axle, 54,700 GVW, New Dakota 24' aluminum box, 62" sides, roll over tarp, 12R22.5 front tires, 11R22.5 rear tires, shows 492,743 miles. Notes: Air conditioner needs charged. Item Location: Dongola, IL 62926 Equipment Sold "AS IS, WHERE IS": All equipment/property is sold "AS IS, WHERE IS" with no warranty or guarantees, expressed or implied, No operational assessments or testing have been made by Del Peterson on this item, it has been photographed ONLY.



### #129 - 1985 Mack R690T Grain Truck (NJP343)

1985 Mack R690T Grain Truck (NJP343), Mack 300 diesel engine, Maxitorque 5 speed transmission, air conditioning, heat, tandem axle full screw, Mack rear ends, camel back suspension, 227" WB, 18' steel grain box, 61" sides, 3 grain gates, 11R22.5 tires, shows 413,431 miles. Notes: New tires & paint. Air conditioner needs belts and charged. Item Location: Dongola, IL 62926 Equipment Sold "AS IS, WHERE IS": All equipment/property is sold "AS IS, WHERE IS" with no warranty or guarantees, expressed or implied, No operational assessments or testing have been made by Del Peterson on this item, it has been photographed ONLY.



### #130 - 1984 Volvo/White Road Boss Grain Truck (NJP347)

1984 Volvo/White Road Boss Grain Truck (NJP347), Cummins 855 diesel engine, 10 speed transmission, air conditioning, heat, Am/Fm cassette radio, tandem axle full screw w/ airlift tag axle, air ride suspension, 170" WB, 3.90 ratio, 12,000 lb front axle, 20' steel grain box, 60" sides, 3 cargo doors, 1 grain gate, roll over tarp, 285/75R24.5 tires, shows 135,017 miles. Notes: Air conditioner needs charged. Item Location: Dongola, IL 62926 Equipment Sold "AS IS, WHERE IS": All equipment/property is sold "AS IS, WHERE IS" with no warranty or guarantees, expressed or implied, No operational assessments or testing have been made by Del Peterson on this item, it has been photographed ONLY.



### #131 - 1993 Ford L9000 Grain Truck (NJP348)

1993 Ford L9000 Grain Truck (NJP348), Cummins L10 280 hp diesel engine, 9 speed transmission, air conditioning, heat, Am/Fm cassette radio, single axle, spring ride suspension, 208" WB, 12,000 lb front axle, 22,000 lb rear axle, 34,000 lb GVW, Omaha Standard 16' steel grain box, 12" box extensions, wood floor, poly liner, 2 swing doors, grain gates, Scott hoist, 295/75R22.5, shows 72,903 miles. Notes: Air conditioner needs hoses & charged. Item Location: Dongola, IL 62926 Equipment Sold "AS IS, WHERE IS": All equipment/property is sold "AS IS, WHERE IS" with no warranty or guarantees, expressed or implied, No operational assessments or testing have been made by Del Peterson on this item, it has been photographed ONLY.



### #132 - 1992 Dynaweld Trailer (PZ6352)

1992 Dynaweld Trailer (PZ6352), approx. 32' flatbed trailer, tandem axle, spring suspension, 11.00-20 budd wheels, bulk head. Notes: Item Location: Grinnell, IA 50112 Equipment Sold "AS IS, WHERE IS": All equipment/property is sold "AS IS, WHERE IS" with no warranty or guarantees, expressed or implied, No operational assessments or testing have been made by Del Peterson on this item, it has been photographed ONLY.



### #133 - 1992 Dynaweld Trailer (PZ6351)

1992 Dynaweld Trailer (PZ6351), approx. 32' flatbed trailer, tandem axle, spring suspension, 11.00-20 budd wheels, bulk head, Ace Roto-Mold 3750 gallon poly liquid nurse tank, Ace Roto-Mold 55 gallon chemical eductor, Honda GX 200 gas engine, Pacer pump, plumbing. Notes: Tank, chemical eductor, pump & motor all new 2 years ago. Item Location: Grinnell, IA 50112 Equipment Sold "AS IS, WHERE IS": All equipment/property is sold "AS IS, WHERE IS" with no warranty or guarantees, expressed or implied, No operational assessments or testing have been made by Del Peterson on this item, it has been photographed ONLY.



### #134 - 2012 Doyle Dry Tender Trailer (PZ6353)

2012 Doyle Dry Tender Trailer (PZ6353), 24 ton capacity, 3 compartment (8-8-8), tandem axle, spring suspension, tires 255/70R22.5, 304 stainless steel, (3) Vibco vibrators, side discharge auger, manual roll tarp, rear ladder, Kubota 3.6L water cooled diesel engine, 22 gallon diesel tank, 52 gallon hydraulic tank, mounted on 2012 B&B trailer, GVWR 45,000lbs, shows 534 hours. Notes: Item Location: Grinnell, IA 50112 Equipment Sold "AS IS, WHERE IS": All equipment/property is sold "AS IS, WHERE IS" with no warranty or guarantees, expressed or implied, No operational assessments or testing have been made by Del Peterson on this item, it has been photographed ONLY.





---

### #135 - 1970 Michigan 85A Articulated Wheel Loader (PD145)

1970 Michigan 85A Articulated Wheel Loader (PD145), auxillary hydraulics, 4 yard bucket & 9 feet wide, near new 23.5x25 16 ply tires, engine and transmission have been overhauled, used to run snow blower before, new paint, new lights, service and shop manuals included. Notes: Item Location: Coal Valley, IL 61240 Equipment Sold "AS IS, WHERE IS": All equipment/property is sold "AS IS, WHERE IS" with no warranty or guarantees, expressed or implied, No operational assessments or testing have been made by Del Peterson on this item, it has been photographed ONLY.



---

### #136 - DMI 13 Row Nutriplacer (PD403)

DMI 13 Row Nutriplacer (PD403), 1000 gallon tank, cds John blue ground driven pump, hydraulic wing folds, 20 inch yetter rippled coulters, floating tandem axles. Notes: Item Location: Johnson, NE 68378 Equipment Sold "AS IS, WHERE IS": All equipment/property is sold "AS IS, WHERE IS" with no warranty or guarantees, expressed or implied, No operational assessments or testing have been made by Del Peterson on this item, it has been photographed ONLY.



---

### #137 - Tyler 8 Ton Dry Spreader (PD402)

Tyler 8 Ton Dry Spreader (PD402), single pan, 540 PTO driven spread pan, 50 foot spread pattern, stinless steel belts and chains near the pan, two gear transmission for different spread rates, gate adjustment chart on rear of machine, hydraulic engagement of the drive wheel, tandem axle, 21.5 x 16.1 SL tires. Notes: Item Location: Johnson, NE 68378 Equipment Sold "AS IS, WHERE IS": All equipment/property is sold "AS IS, WHERE IS" with no warranty or guarantees, expressed or implied, No operational assessments or testing have been made by Del Peterson on this item, it has been photographed ONLY.



---

### #138 - Turf Buddy (PZ6440)

Turf Buddy (PZ6440), Turf Buddy stainless steel spreader, 36" x 36", 25" deep. Notes: Item Location: Dongola, IL 62926 Equipment Sold "AS IS, WHERE IS": All equipment/property is sold "AS IS, WHERE IS" with no warranty or guarantees, expressed or implied, No operational assessments or testing have been made by Del Peterson on this item, it has been photographed ONLY.



---

### #139 - 2000 Mack CH613 Grain Truck (NJP341)

2000 Mack CH613 Grain Truck (NJP341), Mack E7 460 hp diesel engine, Fuller 13 speed transmission, air conditioning, heat, Am/Fm CD stereo, cruise control, power windows & locks, tandem axle, full screw, air lift 3rd axle, air ride suspension, 219 WB, 3.86 ratio, 12,000 lb front axle, 19,000 lb rear axle, Kann 18' aluminum grain box, 72" sides, 3 cargo doors, 3 grain gates, roll over tarp, 315/80R22.5 front tires, 295/75R22.5 rear tires, shows 744,579 miles. Notes: Air conditioner needs charged. Item Location: Dongola, IL 62926 Equipment Sold "AS IS, WHERE IS": All equipment/property is sold "AS IS, WHERE IS" with no warranty or guarantees, expressed or implied, No operational assessments or testing have been made by Del Peterson on this item, it has been photographed ONLY.



---

### #140 - 1994 GMC TopKick Van Truck (NJP350)

1994 GMC TopKick Van Truck (NJP350), 6L gas engine, 5 speed transmission, 2 speed rear end, air conditioning, heat, Am/Fm radio, single axle, spring ride suspension, 272 WB, 8,100 lb front axle, 17,850 rear axle, 24' van body, rollup door, 265/75R22.5, shows 140,883 miles. Notes: Air conditioner needs charged. Item Location: Dongola, IL 62926 Equipment Sold "AS IS, WHERE IS": All equipment/property is sold "AS IS, WHERE IS" with no warranty or guarantees, expressed or implied, No operational assessments or testing have been made by Del Peterson on this item, it has been photographed ONLY.



---

### #141 - Sullair Model 251265-001 Air Compressor (NJP359)

Sullair Model 251265-001 Air Compressor (NJP359), 3 phase electric motor, shows 28,816 hours. Notes: Item Location: Dongola, IL 62926 Equipment Sold "AS IS, WHERE IS": All equipment/property is sold "AS IS, WHERE IS" with no warranty or guarantees, expressed or implied, No operational assessments or testing have been made by Del Peterson on this item, it has been photographed ONLY.



---

### #142 - Crowthorn Lathe (NJP361)

Crowthorn Lathe (NJP361), 3 phase electric motor. Notes: Item Location: Dongola, IL 62926 Equipment Sold "AS IS, WHERE IS": All equipment/property is sold "AS IS, WHERE IS" with no warranty or guarantees, expressed or implied, No operational assessments or testing have been made by Del Peterson on this item, it has been photographed ONLY.



---

### #143 - Titan Tires (PZ6435)

Titan Tires (PZ6435), 2 - Titan Hi-Traction Lug Radial, 480/80R38 tires @ 95%, rims. Notes: Item Location: Dongola, IL 62926 Equipment Sold "AS IS, WHERE IS": All equipment/property is sold "AS IS, WHERE IS" with no warranty or guarantees, expressed or implied, No operational assessments or testing have been made by Del Peterson on this item, it has been photographed ONLY.



---

### #144 - 1950 International Cub Tractor (PZ6436)

1950 International Cub Tractor (PZ6436), gas engine, wide front, front & rear weight on rims, planting & cultivator parts, 5' sickle, 3' harrow, 15" plow. Notes: Item Location: Dongola, IL 62926 Equipment Sold "AS IS, WHERE IS": All equipment/property is sold "AS IS, WHERE IS" with no warranty or guarantees, expressed or implied, No operational assessments or testing have been made by Del Peterson on this item, it has been photographed ONLY.



---

### #145 - 1988 Massey Ferguson Loader (PZ6323)

1988 Massey Ferguson Loader (PZ6323), Detroit 8V71 diesel engine, Allison 2 speed transmission, air brakes, cab, lights. Notes: Item Location: Frankfort, KY 40601 Equipment Sold "AS IS, WHERE IS": All equipment/property is sold "AS IS, WHERE IS" with no warranty or guarantees, expressed or implied, No operational assessments or testing have been made by Del Peterson on this item, it has been photographed ONLY.



---

### #146 - 1979 John Deere 6620 Combine (AL164)

1979 John Deere 6620 Combine (AL164), diesel with turbo, 4 speed transmission with hydrostat. Notes: Corn Head sold separately. Item Location: Fayette, IA 52142 Equipment Sold "AS IS, WHERE IS": All equipment/property is sold "AS IS, WHERE IS" with no warranty or guarantees, expressed or implied, No operational assessments or testing have been made by Del Peterson on this item, it has been photographed ONLY.



---

### #147 - John Deere 643 Corn Head (AL163)

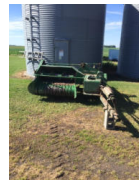
John Deere 643 Corn Head (AL163), 30" wide, 6 row. Notes: Item Location: Fayette, IA 52142 Equipment Sold "AS IS, WHERE IS": All equipment/property is sold "AS IS, WHERE IS" with no warranty or guarantees, expressed or implied, No operational assessments or testing have been made by Del Peterson on this item, it has been photographed ONLY.



---

### #148 - John Deere 14T Baler (PD401)

John Deere 14T Baler (PD401), in good shape, used this spring. Notes: Needs pickup teeth work. Item Location: Jackson, MN 56143 Equipment Sold "AS IS, WHERE IS": All equipment/property is sold "AS IS, WHERE IS" with no warranty or guarantees, expressed or implied, No operational assessments or testing have been made by Del Peterson on this item, it has been photographed ONLY.



---

### #149 - John Deere 314 Tractor Mower (PD399)

John Deere 314 Tractor Mower (PD399), 14 hp kohler 1-cyl engine, 4.5 gallon tank, front pto, electric clutch, 46 inch wheelbase, 46 inch deck, pto driven bagger, hydraulic hookups, hydraulic lift, hydro drive, ran and operated how it should. Notes: Needs an ignition. Item Location: Jackson, MN 56143 Equipment Sold "AS IS, WHERE IS": All equipment/property is sold "AS IS, WHERE IS" with no warranty or guarantees, expressed or implied, No operational assessments or testing have been made by Del Peterson on this item, it has been photographed ONLY.



---

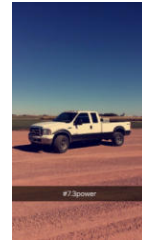
### #150 - Erickson 2548 Skidloader (PD398)

Erickson 2548 Skidloader (PD398), runs and works as it should, good rubber, 800 lb lift, onan engine, 1600+ hours, low lying roll cage, hydrostatic drive. Notes: Item Location: Jackson, MN 56143 Equipment Sold "AS IS, WHERE IS": All equipment/property is sold "AS IS, WHERE IS" with no warranty or guarantees, expressed or implied, No operational assessments or testing have been made by Del Peterson on this item, it has been photographed ONLY.



### #151 - 2000 Ford F-250 Extended Cab 4x4 (PD400)

2000 Ford F-250 Extended Cab 4x4 (PD400), 7.3L Powerstroke, 6 speed manual, runs and drives flawless, 100 horse injectors, banks turbo, ts 6 chip, zfs 6 built tranny, flip over ball, brand new tires, 6 seats in interior, 4 front end clip, new glow plugs, new battery last winter, 5 inch exhaust ran to 7 inch tip, shows 285,000 miles. Notes: Cracked windshield. Item Location: Jackson, MN 56143 Equipment Sold "AS IS, WHERE IS": All equipment/property is sold "AS IS, WHERE IS" with no warranty or guarantees, expressed or implied, No operational assessments or testing have been made by Del Peterson on this item, it has been photographed ONLY.



### #152 - 1994 Transcraft TL 2000 Flatbed Trailer (NJP352)

1994 Transcraft TL 2000 Flatbed Trailer (NJP352), 45', 10'2" spread axle flatbed trailer, air ride suspension, 13 moveable wenches, tarp boxes, 295/75R22.5 tires. Notes: Item Location: Dongola, IL 62926 Equipment Sold "AS IS, WHERE IS": All equipment/property is sold "AS IS, WHERE IS" with no warranty or guarantees, expressed or implied, No operational assessments or testing have been made by Del Peterson on this item, it has been photographed ONLY.



### #153 - 1993 Fontaine Flatbed Trailer (NJP353)

1993 Fontaine Flatbed Trailer (NJP353), 48', 10'2" spread axle flatbed trailer, air ride suspension, 13 moveable wenches, tarp box, headache rack, 275/80R24.5 tires, steel wheels. Notes: Item Location: Dongola, IL 62926 Equipment Sold "AS IS, WHERE IS": All equipment/property is sold "AS IS, WHERE IS" with no warranty or guarantees, expressed or implied, No operational assessments or testing have been made by Del Peterson on this item, it has been photographed ONLY.



### #154 - 1987 CMC Aluminum End Dump Trailer (NJP357)

1987 CMC Aluminum End Dump Trailer (NJP357), 37' aluminum end dump trailer, tandem axle, air ride suspension, roll over tarp, 285/75R24.5 tires. Notes: Item Location: Dongola, IL 62926 Equipment Sold "AS IS, WHERE IS": All equipment/property is sold "AS IS, WHERE IS" with no warranty or guarantees, expressed or implied, No operational assessments or testing have been made by Del Peterson on this item, it has been photographed ONLY.



### #155 - 2002 Mack CH613 Daycab Truck (NJP338)

2002 Mack CH613 Daycab Truck (NJP338), Mack E7 350 hp diesel engine, Fuller 9 speed transmission, air conditioning, heat, Am/Fm cassette radio, cruise control, power windows, power locks, power mirrors, tandem axle full screw, Mack rear ends, air ride suspension, 194" WB, 3.86 ratio, 12,000 lb front axle, 19,000 lb rear axle, air slide fifth wheel, wet kit, headache rack, 295/75R22.5 tires, steel front wheels, rear aluminum wheels. Notes: Air conditioner needs charged. Item Location: Dongola, IL 62926 Equipment Sold "AS IS, WHERE IS": All equipment/property is sold "AS IS, WHERE IS" with no warranty or guarantees, expressed or implied, No operational assessments or testing have been made by Del Peterson on this item, it has been photographed ONLY.



### #156 - 1997 CEI Pacer Bag Bulk Combo Trailer (PD286)

1997 CEI Pacer Bag Bulk Combo Trailer (PD286), 42 foot long x 96 inches wide, 5 bulk board dividers, air ride suspension, air slide top lids. Notes: Item Location: Baring, MO 63531 Equipment Sold "AS IS, WHERE IS": All equipment/property is sold "AS IS, WHERE IS" with no warranty or guarantees, expressed or implied, No operational assessments or testing have been made by Del Peterson on this item, it has been photographed ONLY.



### #157 - 2006 Kenworth T880 & 2003 CEI Pacer Trailer (PD285)

2006 Kenworth T880 & 2003 CEI Pacer Trailer (PD285), quad axle, 975,755 miles, ISX Cummins with 18 speed transmission, full lockers, 20,000 pound front axle, air ride suspension, full gauge package, Pacer is 267 foot long x 102 inches wide, bag bulk combo box, 6 load board dividers, everything is in working condition, box has some cosmetic damage as seen in pictures. Notes: Item Location: Baring, MO 63531 Equipment Sold "AS IS, WHERE IS": All equipment/property is sold "AS IS, WHERE IS" with no warranty or guarantees, expressed or implied, No operational assessments or testing have been made by Del Peterson on this item, it has been photographed ONLY.



### #158 - 30' Knowles Header Wagon (MH192)

30' Knowles Header Wagon (MH192), 30' header wagon with long extendable pull, (4) new tires that are 205/65-10. Notes: Header in pictures is not included. NO TITLE. Item Location: Denmark, WI 54208 Equipment Sold "AS IS, WHERE IS": All equipment/property is sold "AS IS, WHERE IS" with no warranty or guarantees, expressed or implied, No operational assessments or testing have been made by Del Peterson on this item, it has been photographed ONLY.



### #159 - 1995 Mack Propane Bobtail CH613 W/ LP Tank (PD318)

1995 Mack Propane Bobtail CH613 W/ LP Tank (PD318), Mack Motor, Eaton Fuller 9 Speed, 3,499 gallon LP tank bottle, tank year 2004, 250 PSI pressure, great running truck, good power, fresh truck alignment, inspections up to date on truck, shows 18,814 hours miles. Notes: Item Location: Glenville, MN 56036 Equipment Sold "AS IS, WHERE IS": All equipment/property is sold "AS IS, WHERE IS" with no warranty or guarantees, expressed or implied, No operational assessments or testing have been made by Del Peterson on this item, it has been photographed ONLY.



### #160 - TerraGator Row Crop Tires and Wheels (JK163)

TerraGator Row Crop Tires and Wheels (JK163), Complete set, for straddling 30" rows, 4 - 18.00 x 25 16 ply tires, 2 - 15.5 x 25 tires. Notes: All hold air. Seller can deliver anywhere. Item Location: Plover, IA 50573 Equipment Sold "AS IS, WHERE IS": All equipment/property is sold "AS IS, WHERE IS" with no warranty or guarantees, expressed or implied, No operational assessments or testing have been made by Del Peterson on this item, it has been photographed ONLY.



### #161 - 2005 Ford Expedition Eddie Bauer Edition (JK162)

2005 Ford Expedition Eddie Bauer Edition (JK162), V8 gas engine, automatic transmission, CD player, 7 passenger leather seats, moonroof, rear AC/Heat, power seats and windows, power locks, shows 210,793 miles. Notes: Engine issue: engine rattles excessively at front cover, seller can possibly deliver. Item Location: Plover, IA 50573 Equipment Sold "AS IS, WHERE IS": All equipment/property is sold "AS IS, WHERE IS" with no warranty or guarantees, expressed or implied, No operational assessments or testing have been made by Del Peterson on this item, it has been photographed ONLY.



### #162 - 2005 Volvo Daycab Truck (NJP354)

2005 Volvo Daycab Truck (NJP354), VE D12 365 hp diesel engine, Fuller 10 speed transmission, air conditioning, heat, Am/Fm cassette radio, tandem axle, full screw, air ride suspension, 190" WB, 3.98 ratio, 12,000 lb front axle, 19,000 lb rear axle, wet kit, aluminum headache rack, air slide fifth wheel, 295/75R22.5 tires, shows 602,488 miles. Notes: Item Location: Dongola, IL 62926 Equipment Sold "AS IS, WHERE IS": All equipment/property is sold "AS IS, WHERE IS" with no warranty or guarantees, expressed or implied, No operational assessments or testing have been made by Del Peterson on this item, it has been photographed ONLY.



### #163 - 1994 IHC 9400 Grain Truck (NJP346)

1994 IHC 9400 Grain Truck (NJP346), Cummins 350 hp diesel engine, Spicer 9 speed transmission, air conditioning, heat, Am/Fm cassette radio, tandem axle full screw, air ride suspension, 226" WB, 12,000 lb front axle, 20,000 lb rear axle, 18' steel box, 64" sides, steel floor, grain gate, twin post hoist, 11R24.5 tires, shows 475,516 miles. Notes: Item Location: Dongola, IL 62926 Equipment Sold "AS IS, WHERE IS": All equipment/property is sold "AS IS, WHERE IS" with no warranty or guarantees, expressed or implied, No operational assessments or testing have been made by Del Peterson on this item, it has been photographed ONLY.



### #164 - John Deere 914P Pickup Head (PD396)

John Deere 914P Pickup Head (PD396), 6 belt, 12 foot, plastic teeth, used last on John Deere 10 series combine. Notes: Item Location: Mallard, IA 50562 Equipment Sold "AS IS, WHERE IS": All equipment/property is sold "AS IS, WHERE IS" with no warranty or guarantees, expressed or implied, No operational assessments or testing have been made by Del Peterson on this item, it has been photographed ONLY.



### #165 - 1988 Chevrolet Suburban (AL165)

1988 Chevrolet Suburban (AL165), 350 engine, automatic transmission, 2 wheel drive, shows 365,698 miles. Notes: Suburban runs and drives good. Seller just had valve cover and head gaskets put in it. There is a little bit of rust starting and there is a dent in one door. Item Location: Sioux City, IA 51104 Equipment Sold "AS IS, WHERE IS": All equipment/property is sold "AS IS, WHERE IS" with no warranty or guarantees, expressed or implied, No operational assessments or testing have been made by Del Peterson on this item, it has been photographed ONLY.



### #166 - 1999 Chevrolet K1500 Suburban (AL164)

1999 Chevrolet K1500 Suburban (AL164), 4x4, shows 257,713 miles. Notes: Item Location: Sioux City, IA 51104 Equipment Sold "AS IS, WHERE IS": All equipment/property is sold "AS IS, WHERE IS" with no warranty or guarantees, expressed or implied, No operational assessments or testing have been made by Del Peterson on this item, it has been photographed ONLY.





---

### #167 - 2008 O' Brien Hydro Jetter (AL166)

2008 O' Brien Hydro Jetter (AL166), 2000 PSI at 4000 GPM, 2" intake, 3/4" discharge, Cummins B3.3 engine, tires at T/A 245/75R16, electric brakes, pintle hitch, 700 gallon capacity tanks, shows 416 hours. Notes: Very low hours, starts easy and runs great. Item Location: Pleasantville, IA 50225 Equipment Sold "AS IS, WHERE IS": All equipment/property is sold "AS IS, WHERE IS" with no warranty or guarantees, expressed or implied, No operational assessments or testing have been made by Del Peterson on this item, it has been photographed ONLY.



---

### #168 - Prater Pulverizer Co "Blue Streak" Hammer Mill B-7AC/E (AL161)

Prater Pulverizer Co "Blue Streak" Hammer Mill B-7AC/E (AL161), swinging knife type hammer mill with a 12"x10" product inlet that has a 10" diameter air inlet and a 21" x 8" outlet, attached to a metal carriage, drive-train is mated to 75Hp 1775 RPM 3-phase Lincoln electric motor. Notes: Bought used, attached to new carriage - never put into production. Item Location: Leroy, MI 49655 Equipment Sold "AS IS, WHERE IS": All equipment/property is sold "AS IS, WHERE IS" with no warranty or guarantees, expressed or implied, No operational assessments or testing have been made by Del Peterson on this item, it has been photographed ONLY.



---

### #169 - Scarfire for CAT 5X5 Drum Roller (DR6427)

Scarfire for CAT 5X5 Drum Roller (DR6427). Notes: Item Location: Pleasant View, CO 81331 Equipment Sold "AS IS, WHERE IS": All equipment/property is sold "AS IS, WHERE IS" with no warranty or guarantees, expressed or implied, No operational assessments or testing have been made by Del Peterson on this item, it has been photographed ONLY.



---

### #170 - Leroi Track Drill Chassis w/ Rebuilt Engine (DR6430)

Leroi Track Drill Chassis w/ Rebuilt Engine (DR6430), rebuilt Duetz Power diesel engine, 200 hours on rebuilt engine, has hydraulic pump. Notes: Item Location: Pleasant View, CO 81331 Equipment Sold "AS IS, WHERE IS": All equipment/property is sold "AS IS, WHERE IS" with no warranty or guarantees, expressed or implied, No operational assessments or testing have been made by Del Peterson on this item, it has been photographed ONLY.



---

### #171 - Chicago Pneumatic Portable Compressor (DR6435)

Chicago Pneumatic Portable Compressor (DR6435), diesel engine, single axle gear. Notes: Item Location: Grand Junction, CO 81503 Equipment Sold "AS IS, WHERE IS": All equipment/property is sold "AS IS, WHERE IS" with no warranty or guarantees, expressed or implied, No operational assessments or testing have been made by Del Peterson on this item, it has been photographed ONLY.



---

### #172 - CAT D8 Tractor w/Dozer (DR6428)

CAT D8 Tractor w/Dozer (DR6428), CAT diesel engine, 6 speed transmission, OROPS, 10' semi-u front blade, shows hours. Notes: Item Location: Pleasant View, CO 81331 Equipment Sold "AS IS, WHERE IS": All equipment/property is sold "AS IS, WHERE IS" with no warranty or guarantees, expressed or implied, No operational assessments or testing have been made by Del Peterson on this item, it has been photographed ONLY.



---

### #173 - CAT Final Drives & Transmission (DR6426)

CAT Final Drives & Transmission (DR6426), has dead axles, steering clutches, came off a 36AD Crawler tractor. Notes: Item Location: Pleasant View, CO 81331 Equipment Sold "AS IS, WHERE IS": All equipment/property is sold "AS IS, WHERE IS" with no warranty or guarantees, expressed or implied, No operational assessments or testing have been made by Del Peterson on this item, it has been photographed ONLY.



---

### #174 - CAT Semi U Dozer Blade (DR6429)

CAT Semi U Dozer Blade (DR6429). Notes: Item Location: Pleasant View, CO 81331 Equipment Sold "AS IS, WHERE IS": All equipment/property is sold "AS IS, WHERE IS" with no warranty or guarantees, expressed or implied, No operational assessments or testing have been made by Del Peterson on this item, it has been photographed ONLY.



---

### #175 - CAT D8 Dozer (DR6434)

CAT D8 Dozer (DR6434), 36A, CAT diesel engine, pony motor, OROPS, 10' straight blade. Notes: Item Location: Grand Junction, CO 81503 Equipment Sold "AS IS, WHERE IS": All equipment/property is sold "AS IS, WHERE IS" with no warranty or guarantees, expressed or implied, No operational assessments or testing have been made by Del Peterson on this item, it has been photographed ONLY.



---

### #176 - Dozer Ripper (MH191)

Dozer Ripper (MH191), single tooth, adjustable for different dozers. Notes: Item Location: Grand Junction, CO 81503 Equipment Sold "AS IS, WHERE IS": All equipment/property is sold "AS IS, WHERE IS" with no warranty or guarantees, expressed or implied, No operational assessments or testing have been made by Del Peterson on this item, it has been photographed ONLY.



---

### #177 - 1972 Ford New Holland 5550 Loader/ Backhoe (DR6433)

1972 Ford New Holland 5550 Loader/ Backhoe (DR6433), diesel engine, manual transmission, 84" front bucket, 24" backhoe bucket. Notes: Item Location: Grand Junction, CO 81503 Equipment Sold "AS IS, WHERE IS": All equipment/property is sold "AS IS, WHERE IS" with no warranty or guarantees, expressed or implied, No operational assessments or testing have been made by Del Peterson on this item, it has been photographed ONLY.



---

### #178 - 14' Front Mount Snow Plow (DR6432)

14' Front Mount Snow Plow (DR6432). Notes: Item Location: Grand Junction, CO 81503 Equipment Sold "AS IS, WHERE IS": All equipment/property is sold "AS IS, WHERE IS" with no warranty or guarantees, expressed or implied, No operational assessments or testing have been made by Del Peterson on this item, it has been photographed ONLY.



---

### #179 - CAT Pull 80 Cable Scraper w/ rear push bar (DR6425)

CAT Pull 80 Cable Scraper w/ rear push bar (DR6425). Notes: Item Location: Pleasant View, CO 81331 Equipment Sold "AS IS, WHERE IS": All equipment/property is sold "AS IS, WHERE IS" with no warranty or guarantees, expressed or implied, No operational assessments or testing have been made by Del Peterson on this item, it has been photographed ONLY.



---

### #181 - 2005 Timppe Super Hopper (PD405)

2005 Timppe Super Hopper (PD405), clean and always shedded, tarp is 4 years old, no holes, electric role, has not been in salt since repainted frame in 2013, no dents, nice trailer. Notes: Item Location: Chillicothe, IL 61523 Equipment Sold "AS IS, WHERE IS": All equipment/property is sold "AS IS, WHERE IS" with no warranty or guarantees, expressed or implied, No operational assessments or testing have been made by Del Peterson on this item, it has been photographed ONLY.



---

### #182 - 2004 Chrysler Sebring (TR3519)

2004 Chrysler Sebring (TR3519), gas engine, automatic transmission, AM/FM radio, CD, cruise control, P205/60R16 tires, steering wheel controls, cloth interior, power windows/locks, 155,870 miles. Notes: Item Location: Fremont, NE 68025 Equipment Sold "AS IS, WHERE IS": All equipment/property is sold "AS IS, WHERE IS" with no warranty or guarantees, expressed or implied, No operational assessments or testing have been made by Del Peterson on this item, it has been photographed ONLY.



---

### #184 - 2007 Chevrolet Suburban Z71 (TR3521)

2007 Chevrolet Suburban Z71 (TR3521), Z71 Leather package, 4x4, Vortec Gas Flex Fuel engine, automatic transmission, AM/FM radio, CD, DVD player, cruise control, P265/65R18 tires, steering wheel controls, leather interior, power windows/locks, rear mat, fold down seating, power /heated seats, sun roof, split row seats, leather, 145,858 miles. Notes: Item Location: Fremont, NE 68025 Equipment Sold "AS IS, WHERE IS": All equipment/property is sold "AS IS, WHERE IS" with no warranty or guarantees, expressed or implied, No operational assessments or testing have been made by Del Peterson on this item, it has been photographed ONLY.



---

### #185 - 2005 Chevrolet Equinox LT AWD (TR3522)

2005 Chevrolet Equinox LT AWD (TR3522), V6 Gas engine, automatic transmission, AM/FM radio, CD, cruise control, steering wheel controls, leather interior, power windows/locks/seats, 235/60R17 tires, 131,365 miles. Notes: Item Location: Fremont, NE 68025 Equipment Sold "AS IS, WHERE IS": All equipment/property is sold "AS IS, WHERE IS" with no warranty or guarantees, expressed or implied, No operational assessments or testing have been made by Del Peterson on this item, it has been photographed ONLY.



---

### #186 - 2005 GMC Sierra 1500 SLE (TR3523)

2005 GMC Sierra 1500 SLE (TR3523), 4x2, gas engine, automatic transmission, AM/FM radio, CD, cruise control, power windows, power locks, topper, step rails, extended cab, 151,557 miles, steering wheel controls, P245/70R17 tires. Notes: Item Location: Fremont, NE 68025 Equipment Sold "AS IS, WHERE IS": All equipment/property is sold "AS IS, WHERE IS" with no warranty or guarantees, expressed or implied, No operational assessments or testing have been made by Del Peterson on this item, it has been photographed ONLY.



---

**#187 - 2003 Chevrolet Malibu (TR3524)**

2003 Chevrolet Malibu (TR3524), gas engine, automatic transmission, 4 door, power windows, locks, cloth interior, AMFM CD player, heat/AC, cruise control, steering wheel controls, P215/60R15 tires, 222,495 miles. Notes: Spare tire is on, original tire is in truck, minor rust. Item Location: Fremont, NE 68025 Equipment Sold "AS IS, WHERE IS": All equipment/property is sold "AS IS, WHERE IS" with no warranty or guarantees, expressed or implied, No operational assessments or testing have been made by Del Peterson on this item, it has been photographed ONLY.



---

**#188 - 2008 GMC Yukon Denail (TR3497)**

2008 GMC Yukon Denail (TR3497), gas engine, automatic transmission, heat/ac, AM/FM CD player, leather power/heated seats, AUX, steering wheel controls, sun roof, DVD player, 3rd row removable seating, 132,813 miles. Notes: Item is being relisted due to insufficient funds from previous auction. Item Location: Fremont, NE 68025 Equipment Sold "AS IS, WHERE IS": All equipment/property is sold "AS IS, WHERE IS" with no warranty or guarantees, expressed or implied, No operational assessments or testing have been made by Del Peterson on this item, it has been photographed ONLY.

