

Auction catalog

Title	Online Auction August 8, 2017 10AM Central
Description	The following line of Fertilizer, Farm Implement, Truck, Trailer & Construction Equipment will be sold online with the bidding ending on August 8, 2017. Location of the equipment is given. Bidding within the last minute before the closing of a lot will extend the bidding time by an additional minute. Be prepared to bid accordingly. For more information, contact Del Peterson & Associates: 419 West Judy Drive Fremont NE, 68025 Phone: 800-492-9090 or 402-721-4388 Fax: 402-721-4583 E-mail: auction@delpeterson.com
Date	Tue, Aug 8, 2017
Starts at	10:00 AM
Address	PO Box 654, Fremont, NE 68026 USA
Categories	

#1 - Running Gear (NJP368)

Running Gear (NJP368), 4 wheel running gear, 5th wheel, 12.5L-15 flotation tires. Notes: Item Location: Oskaloosa, IA 52577 Equipment Sold "AS IS, WHERE IS": All equipment/property is sold "AS IS, WHERE IS" with no warranty or guarantees, expressed or implied, No operational assessments or testing have been made by Del Peterson on this item, it has been photographed ONLY.



#2 - Running Gear (NJP369)

Running Gear (NJP369), 4 wheel running gear, 5th wheel, 12.5L-15 flotation tires. Notes: Item Location: Oskaloosa, IA 52577 Equipment Sold "AS IS, WHERE IS": All equipment/property is sold "AS IS, WHERE IS" with no warranty or guarantees, expressed or implied, No operational assessments or testing have been made by Del Peterson on this item, it has been photographed ONLY.



#3 - Running Gear (NJP371)

Running Gear (NJP371), 4 wheel running gear, 5th wheel, 11L-15 flotation tires. Notes: Item Location: Oskaloosa, IA 52577 Equipment Sold "AS IS, WHERE IS": All equipment/property is sold "AS IS, WHERE IS" with no warranty or guarantees, expressed or implied, No operational assessments or testing have been made by Del Peterson on this item, it has been photographed ONLY.



#4 - Running Gear (NJP377)

Running Gear (NJP377), 4 wheel running gear, auto steer, 11L-15 flotation tires. Notes: Item Location: Oskaloosa, IA 52577 Equipment Sold "AS IS, WHERE IS": All equipment/property is sold "AS IS, WHERE IS" with no warranty or guarantees, expressed or implied, No operational assessments or testing have been made by Del Peterson on this item, it has been photographed ONLY.



#5 - B - B Running Gear (NJP)

B - B Running Gear (NJP), B - B 4 wheel running gear, 5th wheel, 12.5L-15 flotation tires. Notes: Item Location: Oskaloosa, IA 52577 Equipment Sold "AS IS, WHERE IS": All equipment/property is sold "AS IS, WHERE IS" with no warranty or guarantees, expressed or implied, No operational assessments or testing have been made by Del Peterson on this item, it has been photographed ONLY.



#6 - Hood (NJP366)

Hood (NJP366), Freightliner hood. Notes: Item Location: Oskaloosa, IA 52577 Equipment Sold "AS IS, WHERE IS": All equipment/property is sold "AS IS, WHERE IS" with no warranty or guarantees, expressed or implied, No operational assessments or testing have been made by Del Peterson on this item, it has been photographed ONLY.



#7 - Pickup Box (NJP367)

Pickup Box (NJP367), 2009 Chevrolet 8' pickup box. Notes: Item Location: Oskaloosa, IA 52577 Equipment Sold "AS IS, WHERE IS": All equipment/property is sold "AS IS, WHERE IS" with no warranty or guarantees, expressed or implied, No operational assessments or testing have been made by Del Peterson on this item, it has been photographed ONLY.



#8 - Flatbeds (NJP379)

Flatbeds (NJP379), 20' & 14' flatbeds, mower on top is NOT included. Notes: Mower on top is NOT included. Item Location: Oskaloosa, IA 52577 Equipment Sold "AS IS, WHERE IS": All equipment/property is sold "AS IS, WHERE IS" with no warranty or guarantees, expressed or implied, No operational assessments or testing have been made by Del Peterson on this item, it has been photographed ONLY.



#9 - Ladder Rack (NJP372)

Ladder Rack (NJP372), Ladder rack, tool boxes. Notes: Item Location: Oskaloosa, IA 52577 Equipment Sold "AS IS, WHERE IS": All equipment/property is sold "AS IS, WHERE IS" with no warranty or guarantees, expressed or implied, No operational assessments or testing have been made by Del Peterson on this item, it has been photographed ONLY.



#10 - Liquid Nurse Tank (PZ6611)

Liquid Nurse Tank (PZ6611), 1700 gallon poly liquid nurse tank, tandem axle gear, 9.0-20 tires. Notes: Item Location: Moravia, IA 52571 Equipment Sold "AS IS, WHERE IS": All equipment/property is sold "AS IS, WHERE IS" with no warranty or guarantees, expressed or implied, No operational assessments or testing have been made by Del Peterson on this item, it has been photographed ONLY.



#11 - Liquid Tank (PZ6648)

Liquid Tank (PZ6648), 3000 gallon poly liquid tank, flat bottom. Notes: Item Location: Missouri Valley, IA 51555 Equipment Sold "AS IS, WHERE IS": All equipment/property is sold "AS IS, WHERE IS" with no warranty or guarantees, expressed or implied, No operational assessments or testing have been made by Del Peterson on this item, it has been photographed ONLY.



#12 - Liquid Tank (PZ6649)

Liquid Tank (PZ6649), 3000 gallon poly liquid tank, flat bottom. Notes: Item Location: Missouri Valley, IA 51555 Equipment Sold "AS IS, WHERE IS": All equipment/property is sold "AS IS, WHERE IS" with no warranty or guarantees, expressed or implied, No operational assessments or testing have been made by Del Peterson on this item, it has been photographed ONLY.



#13 - Liquid Tank (PZ6650)

Liquid Tank (PZ6650), 4000 gallon poly liquid tank, flat bottom. Notes: Item Location: Missouri Valley, IA 51555 Equipment Sold "AS IS, WHERE IS": All equipment/property is sold "AS IS, WHERE IS" with no warranty or guarantees, expressed or implied, No operational assessments or testing have been made by Del Peterson on this item, it has been photographed ONLY.



#14 - (7) 275 Gallon IBC Totes (CG320)

(7) 275 Gallon IBC Totes (CG320), 275 gallon. Notes: Item Location: Shiocton, WI 54170 Equipment Sold "AS IS, WHERE IS": All equipment/property is sold "AS IS, WHERE IS" with no warranty or guarantees, expressed or implied, No operational assessments or testing have been made by Del Peterson on this item, it has been photographed ONLY.



#15 - (7) 275 Gallon IBC Totes (CG321)

(7) 275 Gallon IBC Totes (CG321), 275 Gallon. Notes: Item Location: Shiocton, WI 54170 Equipment Sold "AS IS, WHERE IS": All equipment/property is sold "AS IS, WHERE IS" with no warranty or guarantees, expressed or implied, No operational assessments or testing have been made by Del Peterson on this item, it has been photographed ONLY.



#16 - (4) 330 gallon IBC Totes (CG322)

(4) 330 gallon IBC Totes (CG322), 330 gallon. Notes: Item Location: Shiocton, WI 54170 Equipment Sold "AS IS, WHERE IS": All equipment/property is sold "AS IS, WHERE IS" with no warranty or guarantees, expressed or implied, No operational assessments or testing have been made by Del Peterson on this item, it has been photographed ONLY.



#17 - Liquid Control Printable Meter (CG323)

Liquid Control Printable Meter (CG323), 75 ft scully electric hose reel, built in cabinet used for lubricants/fuels. Notes: Item Location: Shiocton, WI 54170 Equipment Sold "AS IS, WHERE IS": All equipment/property is sold "AS IS, WHERE IS" with no warranty or guarantees, expressed or implied, No operational assessments or testing have been made by Del Peterson on this item, it has been photographed ONLY.



#18 - Liquid Control Printable Meter (CG327)

Liquid Control Printable Meter (CG327), 50 ft electric hose reel. Notes: Item Location: Shiocton, WI 54170 Equipment Sold "AS IS, WHERE IS": All equipment/property is sold "AS IS, WHERE IS" with no warranty or guarantees, expressed or implied, No operational assessments or testing have been made by Del Peterson on this item, it has been photographed ONLY.



#19 - OPW Lubricant/Fuel Valves (CG325)

OPW Lubricant/Fuel Valves (CG325). Notes: Item Location: Shiocton, WI 54170 Equipment Sold "AS IS, WHERE IS": All equipment/property is sold "AS IS, WHERE IS" with no warranty or guarantees, expressed or implied, No operational assessments or testing have been made by Del Peterson on this item, it has been photographed ONLY.



#20 - Emco Wheaton Lubricant/Fuel Valves (CG328)

Emco Wheaton Lubricant/Fuel Valves (CG328), 2" dry break, lubricant/fuel valves and fittings. Notes: Item Location: Shiocton, WI 54170 Equipment Sold "AS IS, WHERE IS": All equipment/property is sold "AS IS, WHERE IS" with no warranty or guarantees, expressed or implied, No operational assessments or testing have been made by Del Peterson on this item, it has been photographed ONLY.



#21 - 2001 International 4700 Stakeside Truck (KMK269)

2001 International 4700 Stakeside Truck (KMK269), DT 466 E motor, International 6+ speed transmission, air brakes, heat and air conditioning, block heater, am/fm/wb radio, 14 foot x 102 inch aluminum bed with 48 inch high, swing doors on all sides, D-ring for tie downs, Anthony lift gate, steer tires- Toyo Hyparadial M120z 10 R 22.5, drive tires- Firestone FD660 10 R 22.5, GVW 26,000 lbs., shows 178,014, shows 4,553 hours miles, Unit #8673. Notes: Truck does Not Run - Leaking liner in the #5 cylinder, seller will not help with loading. PLEASE ALLOW AT LEAST 60 DAYS FOR TITLE TRANSFER. Item Location: Dickinson, ND 58601 Equipment Sold "AS IS, WHERE IS": All equipment/property is sold "AS IS, WHERE IS" with no warranty or guarantees, expressed or implied, No operational assessments or testing have been made by Del Peterson on this item, it has been photographed ONLY.



#22 - 2002 Freightliner Conventional FLD112 (EG274)

2002 Freightliner Conventional FLD112 (EG274), CAT C-12 diesel motor, Eaton Fuller, 10 speed transmission, tandem axle, AM/FM radio, heat/AC, tires 11R-22.5, drive tires 80%, front tires 40%, DOT ready, shows 517479 miles. Notes: Item Location: Saint Paul, IA 52657 Equipment Sold "AS IS, WHERE IS": All equipment/property is sold "AS IS, WHERE IS" with no warranty or guarantees, expressed or implied, No operational assessments or testing have been made by Del Peterson on this item, it has been photographed ONLY.



#23 - Schuld Liquid Tank (PZ6640)

Schuld Liquid Tank (PZ6640), Schuld Approx. 6500 gallon vertical stainless steel liquid storage tank. Notes: Item Location: Perry, IA 50220 Equipment Sold "AS IS, WHERE IS": All equipment/property is sold "AS IS, WHERE IS" with no warranty or guarantees, expressed or implied, No operational assessments or testing have been made by Del Peterson on this item, it has been photographed ONLY.



#24 - Schuld Liquid Tank (PZ6641)

Schuld Liquid Tank (PZ6641), Schuld Approx. 6500 gallon vertical stainless steel liquid storage tank. Notes: Item Location: Perry, IA 50220 Equipment Sold "AS IS, WHERE IS": All equipment/property is sold "AS IS, WHERE IS" with no warranty or guarantees, expressed or implied, No operational assessments or testing have been made by Del Peterson on this item, it has been photographed ONLY.



#25 - Liquid Tank (PZ6642)

Liquid Tank (PZ6642), 4000 gallon poly liquid tank, cradle. Notes: Item Location: Perry, IA 50220 Equipment Sold "AS IS, WHERE IS": All equipment/property is sold "AS IS, WHERE IS" with no warranty or guarantees, expressed or implied, No operational assessments or testing have been made by Del Peterson on this item, it has been photographed ONLY.



#26 - Liquid Tank (PZ6643)

Liquid Tank (PZ6643), Approx. 4500 gallon vertical stainless steel liquid tank, stainless steel stands. Notes: Item Location: Perry, IA 50220 Equipment Sold "AS IS, WHERE IS": All equipment/property is sold "AS IS, WHERE IS" with no warranty or guarantees, expressed or implied, No operational assessments or testing have been made by Del Peterson on this item, it has been photographed ONLY.



#27 - Liquid Tank (PZ6644)

Liquid Tank (PZ6644), Precision approx. 2500 gallon vertical stainless steel liquid tank, stainless steel stands. Notes: Item Location: Perry, IA 50220 Equipment Sold "AS IS, WHERE IS": All equipment/property is sold "AS IS, WHERE IS" with no warranty or guarantees, expressed or implied, No operational assessments or testing have been made by Del Peterson on this item, it has been photographed ONLY.



#28 - Liquid Tank (PZ6645)

Liquid Tank (PZ6645), Snyder approx. 3800 gallon poly liquid tank, no stand. Notes: Item Location: Perry, IA 50220 Equipment Sold "AS IS, WHERE IS": All equipment/property is sold "AS IS, WHERE IS" with no warranty or guarantees, expressed or implied, No operational assessments or testing have been made by Del Peterson on this item, it has been photographed ONLY.



#29 - Liquid Tank (PZ6646)

Liquid Tank (PZ6646), approx. 2200 gallon vertical stainless steel liquid tank. Notes: Item Location: Perry, IA 50220 Equipment Sold "AS IS, WHERE IS": All equipment/property is sold "AS IS, WHERE IS" with no warranty or guarantees, expressed or implied, No operational assessments or testing have been made by Del Peterson on this item, it has been photographed ONLY.



#30 - Liquid Tank (PZ6647)

Liquid Tank (PZ6647), approx. 2500 gallon vertical stainless steel liquid tank, stainless steel stands. Notes: Item Location: Perry, IA 50220 Equipment Sold "AS IS, WHERE IS": All equipment/property is sold "AS IS, WHERE IS" with no warranty or guarantees, expressed or implied, No operational assessments or testing have been made by Del Peterson on this item, it has been photographed ONLY.



#31 - 1997 Freightliner FL70 Dry Tender Truck (NJP387)

1997 Freightliner FL70 Dry Tender Truck (NJP387), Cat diesel engine, 6 speed transmission, heat, single axle, Simonsen 3210 seed tender box, rear discharge auger, all hydraulic roll over tarp, 295/75R22.5 tires, Unit# 298. Notes: Item Location: Orient, IA 50858 Equipment Sold "AS IS, WHERE IS": All equipment/property is sold "AS IS, WHERE IS" with no warranty or guarantees, expressed or implied, No operational assessments or testing have been made by Del Peterson on this item, it has been photographed ONLY.



#32 - Liquid Tree (PZ6615)

Liquid Tree (PZ6615), back tree off 1286C liquid system, stainless steel foamer, poly chemical eductor. Notes: Running gear NOT included. Item Location: Harlan, IA 51537 Equipment Sold "AS IS, WHERE IS": All equipment/property is sold "AS IS, WHERE IS" with no warranty or guarantees, expressed or implied, No operational assessments or testing have been made by Del Peterson on this item, it has been photographed ONLY.



#33 - 1964 Brindle LP Mover (PZ6616)

1964 Brindle LP Mover (PZ6616), Brindle LP tank mover, electric motor, portable, 7.00-15 tires, Unit# 974. Notes: Item Location: Harlan, IA 51537 Equipment Sold "AS IS, WHERE IS": All equipment/property is sold "AS IS, WHERE IS" with no warranty or guarantees, expressed or implied, No operational assessments or testing have been made by Del Peterson on this item, it has been photographed ONLY.



#34 - Boss Snow Plow (PZ6617)

Boss Snow Plow (PZ6617), Boss 8'2" power - v snow plow, lights, brakes, controls. Notes: Item Location: Harlan, IA 51537 Equipment Sold "AS IS, WHERE IS": All equipment/property is sold "AS IS, WHERE IS" with no warranty or guarantees, expressed or implied, No operational assessments or testing have been made by Del Peterson on this item, it has been photographed ONLY.



#35 - Willmar Dry Tender Box (NJP384)

Willmar Dry Tender Box (NJP384), Willmar 16 ton stainless steel dry tender box, side discharge auger, all hydraulic, roll over tarp, running gear is included. Notes: Item Location: Winterset, IA 50273 Equipment Sold "AS IS, WHERE IS": All equipment/property is sold "AS IS, WHERE IS" with no warranty or guarantees, expressed or implied, No operational assessments or testing have been made by Del Peterson on this item, it has been photographed ONLY.



#36 - Dry Fertilizer Leg (NJP383)

Dry Fertilizer Leg (NJP383), Kraus approx. 30' stainless steel dry fertilizer leg, Leeson 25 hp electric motor, cups. Notes: Item Location: Indianola, IA 50125 Equipment Sold "AS IS, WHERE IS": All equipment/property is sold "AS IS, WHERE IS" with no warranty or guarantees, expressed or implied, No operational assessments or testing have been made by Del Peterson on this item, it has been photographed ONLY.



#37 - Dry Tender Box (NJP373)

Dry Tender Box (NJP373), approx. 8 ton dry tender box, rear discharge auger, all hydraulic, roll over tarp, running gear included. Notes: Item Location: Oskaloosa, IA 52577 Equipment Sold "AS IS, WHERE IS": All equipment/property is sold "AS IS, WHERE IS" with no warranty or guarantees, expressed or implied, No operational assessments or testing have been made by Del Peterson on this item, it has been photographed ONLY.



#38 - Liquid Nurse Tank (NJP378)

Liquid Nurse Tank (NJP378), Dalton tandem axle gear, 1600 gallon poly liquid nurse tank, Briggs & Stratton gas engine, pump, 11R22.5 tires. Notes: Item Location: Oskaloosa, IA 52577 Equipment Sold "AS IS, WHERE IS": All equipment/property is sold "AS IS, WHERE IS" with no warranty or guarantees, expressed or implied, No operational assessments or testing have been made by Del Peterson on this item, it has been photographed ONLY.



#39 - 2008 Ford Edge SE SUV (TR3505)

2008 Ford Edge SE SUV (TR3505), 3.5 L gas engine, automatic transmission 6 speed, 4 door, rear hatch, power windows, power locks, Gray color, tan interior, fold down seats, AM/FM CD player, Heat, AC, cloth interior, tilt, cruise control, steering wheel controls, Tow hitch. Notes: Item Location: Fremont, NE 68025 Equipment Sold "AS IS, WHERE IS": All equipment/property is sold "AS IS, WHERE IS" with no warranty or guarantees, expressed or implied, No operational assessments or testing have been made by Del Peterson on this item, it has been photographed ONLY.



#40 - 2004 RoGator 1264 Sprayer (PZ6661, Unit 18630)

2004 RoGator 1264 Sprayer (PZ6661), Cat diesel engine, hydrostatic transmission, air conditioning, heat, Am/Fm cassette radio, 1200 gallon stainless steel liquid system, 100' boom, foam marker, stainless steel foam marker tank, top poly rinse tank, poly chemical eductor, Titan 380/90R46 tires, Raven SCS661 monitor, Trimble light bar, shows 3624 hours, 32,061 miles, Unit# 18630. Notes: Crack in glass. Item Location: Greene, IA 50636 Equipment Sold "AS IS, WHERE IS": All equipment/property is sold "AS IS, WHERE IS" with no warranty or guarantees, expressed or implied, No operational assessments or testing have been made by Del Peterson on this item, it has been photographed ONLY.



#40A - 2008 GMC Yukon Denail (TR3497)

2008 GMC Yukon Denail (TR3497), gas engine, automatic transmission, heat/ac, AM/FM CD player, leather power/heated seats, AUX, steering wheel controls, sun roof, DVD player, 3rd row removable seating, 132,813 miles. Notes: Item is being relisted due to insufficient funds from previous auction. Item Location: Fremont, NE 68025 Equipment Sold "AS IS, WHERE IS": All equipment/property is sold "AS IS, WHERE IS" with no warranty or guarantees, expressed or implied, No operational assessments or testing have been made by Del Peterson on this item, it has been photographed ONLY.



#41 - 2002 CaseIH FLX4375 Dry Floater (PZ6671)

2002 CaseIH FLX4375 Dry Floater (PZ6671), Cat C-10 diesel engine, Allison automatic transmission, air conditioning, heat, Am/Fm CD stereo, New Leader L3020-14 G4 dry spreader box (S/N 115235), twin spinner, all hydraulic, Good Year 54x31.00R26 front tires, Good Year VA73x44.00-32 rear tires, Raven SmarTrax, Raven Envizio, New Leader monitor, shows 4112 hours, 57,965 miles, Unit# 1021. Notes: Item Location: Hazel Green, WI 53811 Equipment Sold "AS IS, WHERE IS": All equipment/property is sold "AS IS, WHERE IS" with no warranty or guarantees, expressed or implied, No operational assessments or testing have been made by Del Peterson on this item, it has been photographed ONLY.



#42 - DMI 5250 Tool Bar (PZ6627, Unit 11438)

DMI 5250 Tool Bar (PZ6627), DMI 5250 17 knife pull type tool bar, coulters, double disc sealers, double Raven super cooler, hydraulic wings, walking tandems, 11L-15 flotation tires, rear hitch, Unit# 11438. Notes: Item Location: Yale, IA 50277 Equipment Sold "AS IS, WHERE IS": All equipment/property is sold "AS IS, WHERE IS" with no warranty or guarantees, expressed or implied, No operational assessments or testing have been made by Del Peterson on this item, it has been photographed ONLY.



#43 - DMI 4300 Tool Bar (PZ6628, Unit 11862)

DMI 4300 Tool Bar (PZ6628), DMI 4300 15 knife pull type tool bar, coulters, double disc sealers, Raven super cooler, hydraulic wings, 12.5L-15 flotation tires, rear hitch, Unit# 11862. Notes: Item Location: Yale, IA 50277 Equipment Sold "AS IS, WHERE IS": All equipment/property is sold "AS IS, WHERE IS" with no warranty or guarantees, expressed or implied, No operational assessments or testing have been made by Del Peterson on this item, it has been photographed ONLY.



#44 - Blu Jet Tool Bar (PZ6629, Unit 11358)

Blu Jet Tool Bar (PZ6629), Blu Jet 15 knife pull type tool bar, coulters, double disc sealers, Raven super cooler, hydraulic wings, 11L-15 flotation tires, rear hitch, Unit# 11358. Notes: Item Location: Yale, IA 50277 Equipment Sold "AS IS, WHERE IS": All equipment/property is sold "AS IS, WHERE IS" with no warranty or guarantees, expressed or implied, No operational assessments or testing have been made by Del Peterson on this item, it has been photographed ONLY.



#45 - Blu Jet Tool Bar (PZ6630, Unit 11429)

Blu Jet Tool Bar (PZ6630), Blu Jet 15 knife pull type tool bar, coulters, double disc sealers, Raven super cooler, hydraulic wings, 11L-15 flotation tires, rear hitch, Unit# 11429. Notes: Item Location: Yale, IA 50277 Equipment Sold "AS IS, WHERE IS": All equipment/property is sold "AS IS, WHERE IS" with no warranty or guarantees, expressed or implied, No operational assessments or testing have been made by Del Peterson on this item, it has been photographed ONLY.



#46 - Blu Jet Tool Bar (PZ6631, Unit 11430)

Blu Jet Tool Bar (PZ6631), Blu Jet AT5000 19 knife pull type tool bar, coulters, double disc sealers, double Raven super coolers, hydraulic wings, 12.4-38 tires, rear hitch, Unit# 11430. Notes: Item Location: Yale, IA 50277 Equipment Sold "AS IS, WHERE IS": All equipment/property is sold "AS IS, WHERE IS" with no warranty or guarantees, expressed or implied, No operational assessments or testing have been made by Del Peterson on this item, it has been photographed ONLY.



#47 - Blu Jet Tool Bar (PZ6632, Unit 11242)

Blu Jet Tool Bar (PZ6632), Blu Jet 15 knife pull type tool bar, coulters, double disc sealers, GDI 200 ground driven pump, hydraulic wings, 11L-15 flotation tires, rear hitch, Unit# 11242. Notes: Item Location: Yale, IA 50277 Equipment Sold "AS IS, WHERE IS": All equipment/property is sold "AS IS, WHERE IS" with no warranty or guarantees, expressed or implied, No operational assessments or testing have been made by Del Peterson on this item, it has been photographed ONLY.



#48 - NEW Travis Seed Cart, Model HSC 2200

NEW Travis Seed Cart, Model HSC 2200, tandem axle, 2 box seed tender cart, Digital scale head included with auto shut off, self-aligning box guides that lock seed containers in place, 40 degree slope for absolute cleanout (no cross contamination), equipped with a 15" hydraulic fold auger, 7" poly-cupped flighting with a 3 stage 19' telescoping downspout, reaching all center fill planters, all models unload 625lbs. per minute, 4 minutes per box, 8.0 hp Honda OHV electric-start engine, 3000# rubber torsion axles, remote control auger functions, auger reverser virtually eliminates seed loss, scale models include: weigh indicator and isolated weigh scale frame, self-contained hydraulic system comes complete with hydraulic pump, electric solenoid, reservoir and hoses, low center of gravity, powder-coated paint for durability, 6 bolt hub with 700 x 15 tires. Notes: Item Location: Fremont, NE 68025 Equipment Sold "AS IS, WHERE IS": All equipment/property is sold "AS IS, WHERE IS" with no warranty or guarantees, expressed or implied, No operational assessments or testing have been made by Del Peterson on this item, it has been photographed ONLY.



#49 - DMI Tool Bar (PZ6633, Unit 11236)

DMI Tool Bar (PZ6633), DMI 4250 15 knife pull type tool bar, coulters, double disc sealers, Raven super cooler, hydraulic wings, walking tandems, 11L-15 flotation tires, rear hitch, Unit# 11236. Notes: Item Location: Yale, IA 50277 Equipment Sold "AS IS, WHERE IS": All equipment/property is sold "AS IS, WHERE IS" with no warranty or guarantees, expressed or implied, No operational assessments or testing have been made by Del Peterson on this item, it has been photographed ONLY.



#50 - DMI Tool Bar (PZ6634, Unit 11237)

DMI Tool Bar (PZ6634), DMI 4250 15 knife pull type tool bar, coulters, double disc sealers, Raven super cooler, hydraulic wings, walking tandems, 11L-15 flotation tires, rear hitch, Unit# 11237. Notes: Item Location: Yale, IA 50277 Equipment Sold "AS IS, WHERE IS": All equipment/property is sold "AS IS, WHERE IS" with no warranty or guarantees, expressed or implied, No operational assessments or testing have been made by Del Peterson on this item, it has been photographed ONLY.



#50A - 2003 Chevrolet Malibu (TR3524)

2003 Chevrolet Malibu (TR3524), gas engine, automatic transmission, 4 door, power windows, locks, cloth interior, AMFM CD player, heat/AC, cruise control, steering wheel controls, P215/60R15 tires, 222,495 miles. Notes: Spare tire is on, original tire is in truck, minor rust. Item Location: Fremont, NE 68025 Equipment Sold "AS IS, WHERE IS": All equipment/property is sold "AS IS, WHERE IS" with no warranty or guarantees, expressed or implied, No operational assessments or testing have been made by Del Peterson on this item, it has been photographed ONLY.



#51 - 2005 RoGator 1074 Sprayer (PZ6660, Unit 18406)

2005 RoGator 1074 Sprayer (PZ6660), Cat diesel engine, hydrostatic transmission, air conditioning, heat, Am/Fm radio, 1080 gallon stainless steel liquid system, 100' boom, foam marker, stainless steel foam marker tank, top poly rinse tank, poly chemical eductor, Good Year 380/90R46 tires, Raven Starlink GPS, Raven SCS661 monitor, shows 2082 hours (there are approx. 2000 more hours on hour meter) Unit# 18406. Notes: There is approx. 4000 hours on machine. Right side boom is damaged. Please contact seller for more information on hours & on boom. Item Location: Greene, IA 50636 Equipment Sold "AS IS, WHERE IS": All equipment/property is sold "AS IS, WHERE IS" with no warranty or guarantees, expressed or implied, No operational assessments or testing have been made by Del Peterson on this item, it has been photographed ONLY.



#52 - 1998 John Deere 4700 Sprayer (PZ6699)

1998 John Deere 4700 Sprayer (PZ6699), diesel engine, hydrostatic transmission, air conditioning, heat, Am/Fm radio, 800 gallon stainless steel liquid system, 80' boom, on-board air system, foam marker, 20 gallon poly foam marker tank, poly chemical eductor, Good Year 385/85R34 tires, fenders, Brown box monitor, radar, shows 4590 hours. Notes: Item Location: Stanberry, MO 64489 Equipment Sold "AS IS, WHERE IS": All equipment/property is sold "AS IS, WHERE IS" with no warranty or guarantees, expressed or implied, No operational assessments or testing have been made by Del Peterson on this item, it has been photographed ONLY.



#53 - Seed Tank (PZ6637)

Seed Tank (PZ6637), Approx. 1000 bushel steel seed tank, stands. Notes: Item Location: Yale, IA 50277 Equipment Sold "AS IS, WHERE IS": All equipment/property is sold "AS IS, WHERE IS" with no warranty or guarantees, expressed or implied, No operational assessments or testing have been made by Del Peterson on this item, it has been photographed ONLY.



#54 - Seed Tank (PZ6638)

Seed Tank (PZ6638), Approx. 1000 bushel steel seed tank, stands. Notes: Item Location: Yale, IA 50277 Equipment Sold "AS IS, WHERE IS": All equipment/property is sold "AS IS, WHERE IS" with no warranty or guarantees, expressed or implied, No operational assessments or testing have been made by Del Peterson on this item, it has been photographed ONLY.



#55 - Seed Tank (PZ6639)

Seed Tank (PZ6639), Approx. 900 bushel steel seed tank, stands. Notes: Item Location: Yale, IA 50277 Equipment Sold "AS IS, WHERE IS": All equipment/property is sold "AS IS, WHERE IS" with no warranty or guarantees, expressed or implied, No operational assessments or testing have been made by Del Peterson on this item, it has been photographed ONLY.



#56 - Flotation Tires (PZ6636)

Flotation Tires (PZ6636), 4 - Firestone 23.1-26 flotation tires & rims. Notes: Item Location: Yale, IA 50277 Equipment Sold "AS IS, WHERE IS": All equipment/property is sold "AS IS, WHERE IS" with no warranty or guarantees, expressed or implied, No operational assessments or testing have been made by Del Peterson on this item, it has been photographed ONLY.



#57 - 2007 CaseIH SPX3320 Sprayer (NP5030)

2007 CaseIH SPX3320 Sprayer (NP5030), CaseIH diesel engine, hydrostatic transmission, heat, air conditioning, Am/Fm CD radio, 1,000 gallon stainless steel liquid system, 90' boom, 55 gallon poly foam marker tank, stainless steel chemical inductor, ACE PUMP, Firestone 380/90R46 tires, AIM Command System, Raven Viper Pro monitor, shows 4,436 hours, CPS Unit #12887. Notes: Item Location: Palmyra, MO 63461 Equipment Sold "AS IS, WHERE IS": All equipment/property is sold "AS IS, WHERE IS" with no warranty or guarantees, expressed or implied, No operational assessments or testing have been made by Del Peterson on this item, it has been photographed ONLY.



#58 - NEW Travis Seed Cart, Model HSC 2000

NEW Travis Seed Cart, Model HSC 2000, tandem axle, 2 box seed tender cart, self-aligning box guides that lock seed containers in place, 40 degree slope for absolute cleanout (no cross contamination), equipped with a 15'7" hydraulic fold auger, 7" poly-cupped flighting with a 3 stage 19' telescoping downspout, reaching all center fill planters, all models unload 625lbs. per minute, 4 minutes per box, 8.0 hp Honda OHV electric-start engine, 3000# rubber torsion axles, remote control auger functions, auger reverser virtually eliminates seed loss, scale models include: weigh indicator and isolated weigh scale frame, self-contained hydraulic system comes complete with hydraulic pump, electric solenoid, reservoir and hoses, low center of gravity, powder-coated paint for durability, 6 bolt hub with 700 x 15 tires. Notes: Item Location: Fremont, NE 68025 Equipment Sold "AS IS, WHERE IS": All equipment/property is sold "AS IS, WHERE IS" with no warranty or guarantees, expressed or implied, No operational assessments or testing have been made by Del Peterson on this item, it has been photographed ONLY.



#59 - Hardi 3 Point Sprayer (NP5043)

Hardi 3 Point Sprayer (NP5043), Model NK210, 216 gallon poly tank, 3 section 30' boom, 30" rows, 540 PTO. Notes: Item Location: Jerseyville, IL 62052 Equipment Sold "AS IS, WHERE IS": All equipment/property is sold "AS IS, WHERE IS" with no warranty or guarantees, expressed or implied, No operational assessments or testing have been made by Del Peterson on this item, it has been photographed ONLY.



#60 - Woods Finish Mower (NP5039)

Woods Finish Mower (NP5039), Model RM90, approx. 7' width, 3 point, 540 PTO. Notes: Item Location: Jerseyville, IL 62052 Equipment Sold "AS IS, WHERE IS": All equipment/property is sold "AS IS, WHERE IS" with no warranty or guarantees, expressed or implied, No operational assessments or testing have been made by Del Peterson on this item, it has been photographed ONLY.



#60A - 2003 Ford F-150 XLT (TR3380)

2003 Ford F-150 XLT (TR3380), 4x4, automatic transmission and Gas V8 5.4L/330 engine, extended cab, tow hitch, bed mat, nerf bars, PW/PL/PS, AM/FM/CD player, cruise control, sun roof, LT 285/70R17 tires, 216,421 miles. Notes: Item Location: Fremont, NE 68025 Equipment Sold "AS IS, WHERE IS": All equipment/property is sold "AS IS, WHERE IS" with no warranty or guarantees, expressed or implied, No operational assessments or testing have been made by Del Peterson on this item, it has been photographed ONLY.



#61 - Rotary Tiller (NP5041)

Rotary Tiller (NP5041), 3 point, 540 PTO, approx. 6' width. Notes: Item Location: Jerseyville, IL 62052 Equipment Sold "AS IS, WHERE IS": All equipment/property is sold "AS IS, WHERE IS" with no warranty or guarantees, expressed or implied, No operational assessments or testing have been made by Del Peterson on this item, it has been photographed ONLY.



#62 - John Deere Disk Harrow (NP5042)

John Deere Disk Harrow (NP5042), Model 630, approx. 16' width, front/rear v-pattern discs, hydraulic, 9.5L-14 tires. Notes: Item Location: Jerseyville, IL 62052 Equipment Sold "AS IS, WHERE IS": All equipment/property is sold "AS IS, WHERE IS" with no warranty or guarantees, expressed or implied, No operational assessments or testing have been made by Del Peterson on this item, it has been photographed ONLY.



#63 - Michelin Combine Tires (NP5040)

Michelin Combine Tires (NP5040), size 620/75R34, Mega X Bib, 10 bolt rim pattern, came off New Holland CR9040 combine, used only 4 seasons. Notes: Item Location: Jerseyville, IL 62052 Equipment Sold "AS IS, WHERE IS": All equipment/property is sold "AS IS, WHERE IS" with no warranty or guarantees, expressed or implied, No operational assessments or testing have been made by Del Peterson on this item, it has been photographed ONLY.



#64 - Alliance 3 Point Sprayer (NP5064)

Alliance 3 Point Sprayer (NP5064), 200 gallon poly tank, approx. 45' boom, Notes: Item Location: Monmouth, IL 61462 Equipment Sold "AS IS, WHERE IS": All equipment/property is sold "AS IS, WHERE IS" with no warranty or guarantees, expressed or implied, No operational assessments or testing have been made by Del Peterson on this item, it has been photographed ONLY.



#65 - Hagie 8200 Detasseling Unit (NP5065)

Hagie 8200 Detasseling Unit (NP5065), gas engine, canopy, 4 row 30", 11.2-24 tires, torque hubs, (2) side mounted fuel tanks, Hagie Tasselrol/LS System, shows 891 hours. Notes: Item Location: Monmouth, IL 61462 Equipment Sold "AS IS, WHERE IS": All equipment/property is sold "AS IS, WHERE IS" with no warranty or guarantees, expressed or implied, No operational assessments or testing have been made by Del Peterson on this item, it has been photographed ONLY.



#66 - DMI Tool Bar (PZ6635, Unit 11374)

DMI Tool Bar (PZ6635), DMI 4300 15 knife pull type tool bar, coulters, double disc sealers, Raven super cooler, hydraulic wings, 12.5L-15 flotation tires, rear hitch, Unit# 11374. Notes: Item Location: Yale, IA 50277 Equipment Sold "AS IS, WHERE IS": All equipment/property is sold "AS IS, WHERE IS" with no warranty or guarantees, expressed or implied, No operational assessments or testing have been made by Del Peterson on this item, it has been photographed ONLY.



#67 - Blu Jet Tool Bar (PZ6612, Unit 152386)

Blu Jet Tool Bar (PZ6612), Blu Jet 15 knife pull type tool bar, coulters, double disc sealers, GDI 200 ground driven pump, hydraulic wings, walking tandems, 9.50-15 flotation tires, rear hitch, Unit# 152386. Notes: Item Location: Oakland, IA 51560 Equipment Sold "AS IS, WHERE IS": All equipment/property is sold "AS IS, WHERE IS" with no warranty or guarantees, expressed or implied, No operational assessments or testing have been made by Del Peterson on this item, it has been photographed ONLY.



#68 - Blu Jet Tool Bar (PZ6614, Unit 152394)

Blu Jet Tool Bar (PZ6614), Blu Jet 17 knife pull type tool bar, coulters, double disc sealers, Raven super cooler, hydraulic wings, 11L-15 flotation tires, rear hitch, Unit# 152394. Notes: Item Location: Oakland, IA 51560 Equipment Sold "AS IS, WHERE IS": All equipment/property is sold "AS IS, WHERE IS" with no warranty or guarantees, expressed or implied, No operational assessments or testing have been made by Del Peterson on this item, it has been photographed ONLY.



#69 - Clark Forklift (PZ6611, Unit 24711)

Clark Forklift (PZ6611), Clark model CGP 30 forklift, LP gas engine, shuttle shift transmission, 28x9-15 front tires, 650x10 rear tires, shows 9400 hours, Unit# 24711. Notes: Item Location: Oakland, IA 51560 Equipment Sold "AS IS, WHERE IS": All equipment/property is sold "AS IS, WHERE IS" with no warranty or guarantees, expressed or implied, No operational assessments or testing have been made by Del Peterson on this item, it has been photographed ONLY.



#70 - Ag Systems Tool Bar (PZ6613, Unit 152392)

Ag Systems Tool Bar (PZ6613), Ag Systems 11 knife pull type tool bar, coulters, double disc sealers, hydraulic wings, walking tandems, 11L-15 flotation tires, rear hitch, Unit# 152392. Notes: Item Location: Atlantic, IA 50022 Equipment Sold "AS IS, WHERE IS": All equipment/property is sold "AS IS, WHERE IS" with no warranty or guarantees, expressed or implied, No operational assessments or testing have been made by Del Peterson on this item, it has been photographed ONLY.



#70A - 2008 Chevrolet Impala

2008 Chevrolet Impala, V6 gas engine, automatic transmission, air conditioning, heat, Am/Fm radio, tires 225/55R17, shows 143,932. Notes: Item Location: Fremont, NE 68025 Equipment Sold "AS IS, WHERE IS": All equipment/property is sold "AS IS, WHERE IS" with no warranty or guarantees, expressed or implied, No operational assessments or testing have been made by Del Peterson on this item, it has been photographed ONLY.



#71 - NEW Hitch Doc Fuel Trailer, Model HFC500

NEW Hitch Doc Fuel Trailer, Model HFC500, nose storage compartment, 10 gauge double seam welded tank, full length baffled tanks, 2" anti-slosh tank filler cap and vent, 1-1/2" drain plug, electric brakes w/ breakaway system and safety chains, liquid - two component paint and primer, 25 GPM 12 volt fuel pump, 1" x 18' hose with retractable reel & auto shut-off nozzle, 10 Micron filter, 7,000lbs square lift jack, dual torsion axles: 3,500lbs, DOT approved incandescent tail lights, stop lights, front and rear side marker lights, adjustable 2-5/16" ball hitch, fuel gauge with infinite fuel level indicator, rock guard kit, 205/75/15 tires and rims, bolt on fenders. Notes: Item Location: Fremont, NE 68025 Equipment Sold "AS IS, WHERE IS": All equipment/property is sold "AS IS, WHERE IS" with no warranty or guarantees, expressed or implied, No operational assessments or testing have been made by Del Peterson on this item, it has been photographed ONLY.



#72 - 1996 Tyler Patriot WT Sprayer (NP5143)

1996 Tyler Patriot WT Sprayer (NP5143), John Deere 6 cylinder diesel engine (185HP), 3 speed hydraulic, heat, air conditioning, Am/Fm radio, 550 gallon stainless steel liquid system, 75' boom, 20" spacing, 3-way nozzles, foam marker, 60 gallon foam marker tank, 35 gallon rinse tank, 12.4x38 tires, back tires NEW, fronts 50%, Trimble 750 monitor, Field IQ 6 section shutoff TeeJet valves, shows 2732 hours. Notes: Good machine, seller has another complete set of the original boom also 75' with the back main up and down mass, all the cylinders, nozzle bodies and fittings also go with the machine along with another valve to make it a 7 section system, all manuals and shop work books available for the machine. Item Location: Keytesville, MO 65261 Equipment Sold "AS IS, WHERE IS": All equipment/property is sold "AS IS, WHERE IS" with no warranty or guarantees, expressed or implied, No operational assessments or testing have been made by Del Peterson on this item, it has been photographed ONLY.



#73 - 2011 John Deere 4830 Sprayer (NP5038)

2011 John Deere 4830 Sprayer (NP5038), John Deere diesel engine, hydrostatic transmission, heat, air conditioning, Am/Fm radio, 1,000 gallon stainless steel liquid system, 100' boom, stainless steel chemical inductor, John Deere pump, 380/90R46 tires, auto steer, swath control, StarFire iTC, John Deere GreenStar monitor, shows 3,570 hours, CPS Unit #27452. Notes: Item Location: Pleasant Hill, IL 62366 Equipment Sold "AS IS, WHERE IS": All equipment/property is sold "AS IS, WHERE IS" with no warranty or guarantees, expressed or implied, No operational assessments or testing have been made by Del Peterson on this item, it has been photographed ONLY.



#74 - Layco Belt Conveyor (NP5036)

Layco Belt Conveyor (NP5036), approx. 50' length, 18" belt, stainless steel, portable, ST225/75R15 tires. Notes: Item Location: Palmyra, MO 63461 Equipment Sold "AS IS, WHERE IS": All equipment/property is sold "AS IS, WHERE IS" with no warranty or guarantees, expressed or implied, No operational assessments or testing have been made by Del Peterson on this item, it has been photographed ONLY.



#75 - Tyler Field Loader Conveyor (NP5037)

Tyler Field Loader Conveyor (NP5037), approx. 35' overall length, 24" belt, portable, hydraulic, P235/75R15 tires. Notes: Item Location: Palmyra, MO 63461 Equipment Sold "AS IS, WHERE IS": All equipment/property is sold "AS IS, WHERE IS" with no warranty or guarantees, expressed or implied, No operational assessments or testing have been made by Del Peterson on this item, it has been photographed ONLY.



#76 - 2013 Chevrolet Silverado LT 2500HD 4x4 Pickup (NP5067)

2013 Chevrolet Silverado LT 2500HD 4x4 Pickup (NP5067), Crew Cab, Vortec 6.0L gas engine, automatic transmission, heat, air conditioning, Am/Fm CD radio, cruise, power windows, locks and mirrors, rear power windows, tow package, spray-in bed liner, Luverne running boards, bug shield, front/rear mud flaps, The MULE quick hitch, backup sensors, LT245/75R17 tires, shows 112,554 miles, Unit #77700 Notes: Cracked front windshield. PLEASE ALLOW AT LEAST 60 DAYS FOR TITLE TRANSFER. Item Location: Viola, IL 61486 Equipment Sold "AS IS, WHERE IS": All equipment/property is sold "AS IS, WHERE IS" with no warranty or guarantees, expressed or implied, No operational assessments or testing have been made by Del Peterson on this item, it has been photographed ONLY.



#77 - 2008 RoGator SS1084 Sprayer (PZ6618)

2008 RoGator SS1084 Sprayer (PZ6618), Cat diesel engine, hydrostatic transmission, air conditioning, heat, Am/Fm CD stereo, 1080 gallon stainless steel liquid system, 100' boom, foam marker, stainless steel foam marker tank, top poly rinse tank, Firestone 650/75R32 flotation tires, (Row crop tires are in Casey, IA), Raven monitor, Raven GPS, shows 3110 hours, Unit# 207. Notes: Row Crop tires for this machine are located in Casey, IA. Please call seller for further information. Item Location: Audubon, IA 50025 Equipment Sold "AS IS, WHERE IS": All equipment/property is sold "AS IS, WHERE IS" with no warranty or guarantees, expressed or implied, No operational assessments or testing have been made by Del Peterson on this item, it has been photographed ONLY.



#78 - 2009 Terra Gator 6203 Dry Floater (NJP385)

2009 Terra Gator 6203 Dry Floater (NJP385), Cat diesel engine, Terra Shift transmission, air conditioning, heat, Am/Fm radio, New Leader L4000 G4 stainless steel dry spreader box, twin spinner, all hydraulic, 1000/50R25 tires, Raven GPS, Raven SmarTrax, Raven monitor, shows 5001 hours, Unit# 053. Notes: Item Location: Orient, IA 50858 Equipment Sold "AS IS, WHERE IS": All equipment/property is sold "AS IS, WHERE IS" with no warranty or guarantees, expressed or implied, No operational assessments or testing have been made by Del Peterson on this item, it has been photographed ONLY.



#79 - Gustafson Seed Treater (NJP386)

Gustafson Seed Treater (NJP386), Gustafson model HCBT800-CBP30 seed treater, control panel, portable. Notes: Item Location: Orient, IA 50858 Equipment Sold "AS IS, WHERE IS": All equipment/property is sold "AS IS, WHERE IS" with no warranty or guarantees, expressed or implied, No operational assessments or testing have been made by Del Peterson on this item, it has been photographed ONLY.



#80 - DMI Tool Bar (PZ6619, Unit W52363)

DMI Tool Bar (PZ6619), DMI 3300 11 knife pull type tool bar, coulters, double disc sealers, Raven super cooler, hydraulic wings, walking tandems, 9.5L-15 flotation tires, rear hitch, Unit# W52363. Notes: Item Location: Audubon, IA 50025 Equipment Sold "AS IS, WHERE IS": All equipment/property is sold "AS IS, WHERE IS" with no warranty or guarantees, expressed or implied, No operational assessments or testing have been made by Del Peterson on this item, it has been photographed ONLY.



#80A - 2013 Buick Enclave

2013 Buick Enclave, gas engine, automatic transmission, air conditioning, heat, Am/Fm radio, power windows, tires P255/60R19, shows 90419 miles. Notes: Item Location: Fremont, NE 68025 Equipment Sold "AS IS, WHERE IS": All equipment/property is sold "AS IS, WHERE IS" with no warranty or guarantees, expressed or implied, No operational assessments or testing have been made by Del Peterson on this item, it has been photographed ONLY.



#80B - 2007 BMW 335i Sedan (TR3699)

2007 BMW 335i Sedan (TR3699), gas engine, 4 door, automatic transmission, AM/FM CD player, Leather interior, power seats/locks/windows/mirrors, cruise control, tilt, steering wheel controls, heat/AC, sun roof, MILEAGE 111,125. Notes: Engine has a knock. Item Location: Fremont, NE 68025 Equipment Sold "AS IS, WHERE IS": All equipment/property is sold "AS IS, WHERE IS" with no warranty or guarantees, expressed or implied, No operational assessments or testing have been made by Del Peterson on this item, it has been photographed ONLY.



#81 - DMI Tool Bar (PZ6620, Unit W50390)

DMI Tool Bar (PZ6620), DMI 4100 13 knife pull type tool bar, coulters, double disc sealers, Raven super cooler, hydraulic wings, 12.5L-15 flotation tires, rear hitch, Unit# W50390. Notes: Item Location: Audubon, IA 50025 Equipment Sold "AS IS, WHERE IS": All equipment/property is sold "AS IS, WHERE IS" with no warranty or guarantees, expressed or implied, No operational assessments or testing have been made by Del Peterson on this item, it has been photographed ONLY.



#82 - NEW Hitch Doc Fuel Trailer, NEW NEVER USED, Model HFC750

NEW Hitch Doc Fuel Trailer, NEW NEVER USED, Model HFC750, tandem axle, 750 gallon fuel tank, nose storage compartment, 10 gauge double seam welded, tank is independent from chassis & can be removed, 2 full length baffles, 2" anti-slosh tank filler cap & vent, cap vents @ 2.5 PSI, 1 1/2" drain plug, electric brakes w/breakaway system & safety chains, liquid-two component paint & primer, 25 GPM 12 volt fuel pump, 1" x 35' retractable hose & reel, auto shut off nozzle, 10 Micron filter, 7000 lb square lift jack, dual torsion axles 3500lb, DOT approved lights, 2 5/16 ball hitch, top mounted fuel gauge, rock guard kit w/ diamond plate on fenders, 235/80R16 tires, bolt on fenders. Notes: Item Location: Fremont, NE 68025 Equipment Sold "AS IS, WHERE IS": All equipment/property is sold "AS IS, WHERE IS" with no warranty or guarantees, expressed or implied, No operational assessments or testing have been made by Del Peterson on this item, it has been photographed ONLY.



#83 - Blu Jet Tool Bar (PZ6621, Unit W50468)

Blu Jet Tool Bar (PZ6621), Blu Jet 13 knife pull type tool bar, coulters, double disc sealers, Raven super cooler, hydraulic wings, 11L-15 flotation tires, rear hitch, Unit# W50468. Notes: Item Location: Audubon, IA 50025 Equipment Sold "AS IS, WHERE IS": All equipment/property is sold "AS IS, WHERE IS" with no warranty or guarantees, expressed or implied, No operational assessments or testing have been made by Del Peterson on this item, it has been photographed ONLY.



#84 - Blu Jet Tool Bar (PZ6622, Unit W50465)

Blu Jet Tool Bar (PZ6622), Blu Jet 11 knife pull type tool bar, coulters, double disc sealers, Raven super cooler, hydraulic wings, 9.5L-15 flotation tires, rear hitch, Unit# W50465. Notes: Item Location: Audubon, IA 50025 Equipment Sold "AS IS, WHERE IS": All equipment/property is sold "AS IS, WHERE IS" with no warranty or guarantees, expressed or implied, No operational assessments or testing have been made by Del Peterson on this item, it has been photographed ONLY.



#85 - DMI Tool Bar (PZ6623, Unit 10434)

DMI Tool Bar (PZ6623), DMI 4300 15 knife pull type tool bar, coulters, double disc sealers, Raven super cooler, hydraulic wings, walking tandems, 11L-15 flotation tires, rear hitch, Unit# 10434. Notes: Item Location: Bayard, IA 50029 Equipment Sold "AS IS, WHERE IS": All equipment/property is sold "AS IS, WHERE IS" with no warranty or guarantees, expressed or implied, No operational assessments or testing have been made by Del Peterson on this item, it has been photographed ONLY.



#86 - 2015 Doyle Dry Tender Trailer (NP5031)

2015 Doyle Dry Tender Trailer (NP5031), 24 ton capacity, 3 compartment (8-8-8), 304 stainless steel, (3) Vibco vibrators, rear discharge auger, AGRI-COVER electric roll tarp with command station, rear ladder, Kubota water cooled diesel engine, 22 gallon diesel tank, 52 gallon hydraulic tank, LOFA Industries, Inc. electric start control panel, shows 157.1 hours, mounted on 2015 B&B semi trailer, Model DDT24RD-38, tandem axle, spring suspension, 255/70R22.5 tires, GVWR 60,000lbs. Notes: Item Location: Palmyra, MO 63461 Equipment Sold "AS IS, WHERE IS": All equipment/property is sold "AS IS, WHERE IS" with no warranty or guarantees, expressed or implied, No operational assessments or testing have been made by Del Peterson on this item, it has been photographed ONLY.



#87 - 2013 Chevrolet Silverado LT 2500HD 4x4 Pickup (NP5068)

2013 Chevrolet Silverado LT 2500HD 4x4 Pickup (NP5068), Crew Cab, Vortec 6.0L gas engine, automatic transmission, heat, air conditioning, Am/Fm CD radio, cruise, power windows, locks and mirrors, rear power windows, tow package, spray-in bed liner, Luverne running boards, bug shield, front/rear mud flaps, The MULE quick hitch, backup sensors, LT245/75R17 tires, shows 177,771 miles, Unit #77792. Notes: PLEASE ALLOW AT LEAST 60 DAYS FOR TITLE TRANSFER. Item Location: Viola, IL 61486 Equipment Sold "AS IS, WHERE IS": All equipment/property is sold "AS IS, WHERE IS" with no warranty or guarantees, expressed or implied, No operational assessments or testing have been made by Del Peterson on this item, it has been photographed ONLY.



#88 - Brent Weigh Wagon (NJP364)

Brent Weigh Wagon (NJP364), Brent weigh wagon, single axle, side discharge auger, Vanguard 18 hp electric start gas engine, Digi-Star EZ 150 digital readout, roll over tarp, 12-16.5LT tires. Notes: Item Location: Oskaloosa, IA 52577 Equipment Sold "AS IS, WHERE IS": All equipment/property is sold "AS IS, WHERE IS" with no warranty or guarantees, expressed or implied, No operational assessments or testing have been made by Del Peterson on this item, it has been photographed ONLY.



#89 - Parker Weigh Wagon (NJP365)

Parker Weigh Wagon (NJP365), Parker weigh wagon, single axle, side discharge auger, Twin II 18 gas engine, digital readout, 7.50-16 tires. Notes: Item Location: Oskaloosa, IA 52577 Equipment Sold "AS IS, WHERE IS": All equipment/property is sold "AS IS, WHERE IS" with no warranty or guarantees, expressed or implied, No operational assessments or testing have been made by Del Peterson on this item, it has been photographed ONLY.



#90 - Seed Mixer (NJP382)

Seed Mixer (NJP382), Bel Echo seed mixer, electric motor. Notes: Item Location: Oskaloosa, IA 52577 Equipment Sold "AS IS, WHERE IS": All equipment/property is sold "AS IS, WHERE IS" with no warranty or guarantees, expressed or implied, No operational assessments or testing have been made by Del Peterson on this item, it has been photographed ONLY.



#90A - 2013 Kia Optima

2013 Kia Optima, gas engine automatic transmission, air conditioning, heat, Am/Fm radio, CD player, power windows, tires 205/65R16, shows 34,368 miles. Notes: Item Location: Fremont, NE 68025 Equipment Sold "AS IS, WHERE IS": All equipment/property is sold "AS IS, WHERE IS" with no warranty or guarantees, expressed or implied, No operational assessments or testing have been made by Del Peterson on this item, it has been photographed ONLY.



#90B - 2010 Dodge Caliber (TR3700)

2010 Dodge Caliber (TR3700), gas engine, automatic transmission, AM/FM CD player, Steering wheel controls, cloth interior, power windows, locks, fold down seating, cruise control, heat/AC, XM ready, 90,233 miles. Notes: Front passenger side crack in bumper Item Location: Fremont, NE 68025 Equipment Sold "AS IS, WHERE IS": All equipment/property is sold "AS IS, WHERE IS" with no warranty or guarantees, expressed or implied, No operational assessments or testing have been made by Del Peterson on this item, it has been photographed ONLY.



#92 - 1994 IHC 8100 Liquid Nurse Truck (NJP388)

1994 IHC 8100 Liquid Nurse Truck (NJP388), diesel engine, 9 speed transmission, air conditioning, heat, single axle, flatbed, 1600 gallon poly liquid nurse tank, 148" WB, 11R22.5 tires, shows 630,655 miles, Unit# 215. Notes: Item Location: Malvern, IA 51551 Equipment Sold "AS IS, WHERE IS": All equipment/property is sold "AS IS, WHERE IS" with no warranty or guarantees, expressed or implied, No operational assessments or testing have been made by Del Peterson on this item, it has been photographed ONLY.



#93 - DMI Tool Bar (PZ6624, Unit 10442)

DMI Tool Bar (PZ6624), DMI 4300 15 knife pull type tool bar, coulters, double disc sealers, Raven super cooler, hydraulic wings, 12.5L-15 flotation tires, rear hitch, Unit# 10442. Notes: Item Location: Bayard, IA 50029 Equipment Sold "AS IS, WHERE IS": All equipment/property is sold "AS IS, WHERE IS" with no warranty or guarantees, expressed or implied, No operational assessments or testing have been made by Del Peterson on this item, it has been photographed ONLY.



#94 - DMI Tool Bar (PZ6626, Unit 10312)

DMI Tool Bar (PZ6626), DMI 4250 15 knife pull type tool bar, coulters, double disc sealers, double Raven super cooler, hydraulic wings, walking tandems, 11L-15 flotation tires, rear hitch, Raven monitor, Unit# 10312. Notes: Item Location: Bayard, IA 50029 Equipment Sold "AS IS, WHERE IS": All equipment/property is sold "AS IS, WHERE IS" with no warranty or guarantees, expressed or implied, No operational assessments or testing have been made by Del Peterson on this item, it has been photographed ONLY.



#95 - DMI Tool Bar (PZ6625, Unit 11916)

DMI Tool Bar (PZ6625), DMI 4300 15 knife pull type tool bar, coulters, double disc sealers, Raven super cooler, hydraulic wings, 12.5L-15 flotation tires, rear hitch, Raven monitor, Unit# 11916. Notes: Item Location: Bayard, IA 50029 Equipment Sold "AS IS, WHERE IS": All equipment/property is sold "AS IS, WHERE IS" with no warranty or guarantees, expressed or implied, No operational assessments or testing have been made by Del Peterson on this item, it has been photographed ONLY.



#96 - 2009 GMC 2500HD Crew Cab (PZ6321)

2009 GMC 2500HD Crew Cab (PZ6321), Sierra SLT 4x4, gas engine, automatic transmission, air conditioning, heat, Am/Fm radio, cruise control, power windows & locks, power drivers seat, sun roof, running boards, 5th wheel ball, shows 170,725 miles. Notes: Item Location: Willcox, AZ 85643 Equipment Sold "AS IS, WHERE IS": All equipment/property is sold "AS IS, WHERE IS" with no warranty or guarantees, expressed or implied, No operational assessments or testing have been made by Del Peterson on this item, it has been photographed ONLY.



#97 - 2010 Chevrolet 1500 Crew Cab (PZ6322)

2010 Chevrolet 1500 Crew Cab (PZ6322), Silverado LT 4x4, gas engine, automatic transmission, air conditioning, heat, Am/Fm CD stereo, cruise control, power windows & locks, running boards, shows 136,262 miles. Notes: Item Location: Willcox, AZ 85643 Equipment Sold "AS IS, WHERE IS": All equipment/property is sold "AS IS, WHERE IS" with no warranty or guarantees, expressed or implied, No operational assessments or testing have been made by Del Peterson on this item, it has been photographed ONLY.



#98 - Kraus Conveyor (PZ6316)

Kraus Conveyor (PZ6316), Kraus dry conveyor, self contained, electric start gas engine, portable, ST205/75R15 tires. Notes: Item Location: Willcox, AZ 85643 Equipment Sold "AS IS, WHERE IS": All equipment/property is sold "AS IS, WHERE IS" with no warranty or guarantees, expressed or implied, No operational assessments or testing have been made by Del Peterson on this item, it has been photographed ONLY.



#99 - SWECO Land Plane (PZ6313)

SWECO Land Plane (PZ6313) SWECO landplane, 40', 18' wide, hydraulic lift, 11L-15FI flotation tires. Notes: Item Location: Willcox, AZ 85643 Equipment Sold "AS IS, WHERE IS": All equipment/property is sold "AS IS, WHERE IS" with no warranty or guarantees, expressed or implied, No operational assessments or testing have been made by Del Peterson on this item, it has been photographed ONLY.



#100 - 2015 Carry-On Trailer Corp. (PZ6320)

2015 Carry-On Trailer Corp. (PZ6320), 2015 Carry-On Trailer Corp. single axle trailer, fold down ramp. Notes: Welder & box on trailer are NOT included. Item Location: Willcox, AZ 85643 Equipment Sold "AS IS, WHERE IS": All equipment/property is sold "AS IS, WHERE IS" with no warranty or guarantees, expressed or implied, No operational assessments or testing have been made by Del Peterson on this item, it has been photographed ONLY.



#100A - 2007 Chevrolet Suburban Z71 (TR3521)

2007 Chevrolet Suburban Z71 (TR3521), Z71 Leather package, 4x4, Vortec Gas Flex Fuel engine, automatic transmission, AM/FM radio, CD, DVD player, cruise control, P265/65R18 tires, steering wheel controls, leather interior, power windows/locks, rear mat, fold down seating, power /heated seats, sun roof, split row seats, leather, 145,858 miles. Notes: Item Location: Fremont, NE 68025 Equipment Sold "AS IS, WHERE IS": All equipment/property is sold "AS IS, WHERE IS" with no warranty or guarantees, expressed or implied, No operational assessments or testing have been made by Del Peterson on this item, it has been photographed ONLY.



#101 - 2014 Parker Trailer (PZ6317)

2014 Parker Trailer (PZ6317), 2014 Parker single axle trailer, fold down ramp, ST205/75R15 tires. Notes: Liquid tank on trailer NOT included. Registration in lieu of title. Item Location: Willcox, AZ 85643 Equipment Sold "AS IS, WHERE IS": All equipment/property is sold "AS IS, WHERE IS" with no warranty or guarantees, expressed or implied, No operational assessments or testing have been made by Del Peterson on this item, it has been photographed ONLY.



#102 - 2015 Carry-On Trailer Corp. (PZ6314)

2015 Carry-On Trailer Corp. (PZ6314), 2015 Carry-On Trailer Corp single axle trailer, fold down ramp. Notes: Liquid tank and pump on trailer are NOT included. Item Location: Willcox, AZ 85643 Equipment Sold "AS IS, WHERE IS": All equipment/property is sold "AS IS, WHERE IS" with no warranty or guarantees, expressed or implied, No operational assessments or testing have been made by Del Peterson on this item, it has been photographed ONLY.



#103 - 1998 Allco Trailer (PZ6312)

1998 Allco Trailer (PZ6312), 1998 Allco model BD-40-IP pup trailer, hydraulic door, 11R22.5 tires. Notes: Liquid tank and pump on trailer are NOT included. Item Location: Willcox, AZ 85643 Equipment Sold "AS IS, WHERE IS": All equipment/property is sold "AS IS, WHERE IS" with no warranty or guarantees, expressed or implied, No operational assessments or testing have been made by Del Peterson on this item, it has been photographed ONLY.



#104 - Prater Mixer (DR6442)

Prater Mixer (DR6442), 5 ton vertical mixer, was in working order when taken out. Mixer is REMOVED ready for transport, HAS NO MOTOR. Notes: Item Location: Elk Mound, WI 54739 Equipment Sold "AS IS, WHERE IS": All equipment/property is sold "AS IS, WHERE IS" with no warranty or guarantees, expressed or implied, No operational assessments or testing have been made by Del Peterson on this item, it has been photographed ONLY.



#105 - 2003 Ford Escape XLT (DR6483)

2003 Ford Escape XLT (DR6483), 3.0 liter V-6 gas engine, automatic transmission, power windows & locks, power driver seat, AM/FM CD radio, 6 disc changer, keyless entry, flat fold rear seats, Satin Silver metallic color, Car Fax report available, shows 116,109 miles. Notes: Interior has been professionally detailed, NO rust, spark plugs and coil JUST replaced @ 115,945 miles. Vehicle runs rough mechanic says exhaust manifold NEEDS replaced. Item Location: Somerville, MA 02145 Equipment Sold "AS IS, WHERE IS": All equipment/property is sold "AS IS, WHERE IS" with no warranty or guarantees, expressed or implied, No operational assessments or testing have been made by Del Peterson on this item, it has been photographed ONLY.



#106 - 2014 Doyle Dry Tender Trailer (NP5034)

2014 Doyle Dry Tender Trailer (NP5034), 24 ton capacity, 3 compartment (8-8-8), 304 stainless steel, (3) Vibco vibrators, side discharge auger, AGRI-COVER manual roll tarp, rear ladder, Kubota 3.6L water cooled diesel engine, 22 gallon diesel tank, 52 gallon hydraulic tank, LOFA Industries, Inc. electric start control panel, shows 281.7 hours, mounted on 2014 B&B semi trailer, Model DDT24 TANDEM, tandem axle, spring suspension, 255/70R22.5 tires, GVWR 60,000lbs. Notes: Item Location: Palmyra, MO 63461 Equipment Sold "AS IS, WHERE IS": All equipment/property is sold "AS IS, WHERE IS" with no warranty or guarantees, expressed or implied, No operational assessments or testing have been made by Del Peterson on this item, it has been photographed ONLY.



#107 - 1996 Freightliner FL112 Feed Truck (NP4974)

1996 Freightliner FL112 Feed Truck (NP4974), Cummins M11-330 ESP diesel engine, Rockwell 10 speed transmission, heat, air conditioning, Am/FM radio, cruise, tandem axle, air ride suspension, 2006 CEI Pacer Model A35L feed body (S/N A35L-22.5-2668), 5 compartment, overhead auger, hydraulic controls, 11R22.5 rear tires, 315/80R22.5 front tires, single exhaust, GVWR 56,540lbs, Unit #2113, shows 311,448 miles. Notes: Item Location: Sharon Springs, KS 67758 Equipment Sold "AS IS, WHERE IS": All equipment/property is sold "AS IS, WHERE IS" with no warranty or guarantees, expressed or implied, No operational assessments or testing have been made by Del Peterson on this item, it has been photographed ONLY.



#108 - 2013 Chevrolet Silverado LT 2500HD 4x4 Pickup (NP5069)

2013 Chevrolet Silverado LT 2500HD 4x4 Pickup (NP5069), Crew Cab, Vortec 6.0L gas engine, automatic transmission, heat, air conditioning, Am/Fm CD radio, cruise, power windows, locks and mirrors, rear power windows, tow package, spray-in bed liner, Luverne running boards, front/rear mud flaps, The MULE quick hitch, backup sensors, LT265/70R17 tires, shows 115,027 miles, Unit #77993. Notes: PLEASE ALLOW AT LEAST 60 DAYS FOR TITLE TRANSFER. Item Location: Viola, IL 61486 Equipment Sold "AS IS, WHERE IS": All equipment/property is sold "AS IS, WHERE IS" with no warranty or guarantees, expressed or implied, No operational assessments or testing have been made by Del Peterson on this item, it has been photographed ONLY.



#109 - 2012 CaseIH Patriot 4430 Sprayer (NP5070)

2012 CaseIH Patriot 4430 Sprayer (NP5070), CaseIH FPT 8.7L diesel engine, hydrostatic transmission, heat, air conditioning, Am/Fm CD radio, 1,200 gallon stainless steel liquid system, 120' boom, 20" spacing, 5-way nozzle bodies, stainless steel chemical inductor, top poly rinse tank, Michelin Spraybib VF 380/90R46 tires, 10 bolt rim pattern, Viper Pro monitor w/ weather option, shows 2,136 hours. Notes: Item Location: Tribune, KS 67879 Equipment Sold "AS IS, WHERE IS": All equipment/property is sold "AS IS, WHERE IS" with no warranty or guarantees, expressed or implied, No operational assessments or testing have been made by Del Peterson on this item, it has been photographed ONLY.



#110 - 2009 Cat Challenger MT955C Tractor (PZ6674)

2009 Cat Challenger MT955C Tractor (PZ6674), Cat C-15 diesel engine, Powershift transmission, air conditioning, heat, Am/Fm CD stereo, power mirrors, 4 port hydraulics, draw bar, battery disconnect, Good Year 800/70R38 dual tires (1 - Mitas tire), shows 3166 hours, Unit# 451. Notes: Item Location: Monticello, IA 52310 Equipment Sold "AS IS, WHERE IS": All equipment/property is sold "AS IS, WHERE IS" with no warranty or guarantees, expressed or implied, No operational assessments or testing have been made by Del Peterson on this item, it has been photographed ONLY.



#110A - 2009 GMC Yukon

2009 GMC Yukon, gas engine, automatic transmission, air conditioning, heat, Am/Fm radio, heated seats, DVD player, sunroof, tires LT265/70R17, shows 132,813 miles. Notes: Item Location: Fremont, NE 68025 Equipment Sold "AS IS, WHERE IS": All equipment/property is sold "AS IS, WHERE IS" with no warranty or guarantees, expressed or implied, No operational assessments or testing have been made by Del Peterson on this item, it has been photographed ONLY.



#111 - 1962 McKelvey LP Storage Tank (PZ6658)

1962 McKelvey LP Storage Tank (PZ6658), 1962 McKelvey 18,000 gallon LP storage tank, pumping, electric motor/corken pump, data plate. Notes: This tank must be removed by November 30, 2017 with NO exceptions. Dismantle, removal and transportation is at the expense, risk and liability of the buyer. Item Location: Aredale, IA 50605 Equipment Sold "AS IS, WHERE IS": All equipment/property is sold "AS IS, WHERE IS" with no warranty or guarantees, expressed or implied, No operational assessments or testing have been made by Del Peterson on this item, it has been photographed ONLY.



#112 - 2010 Ford Escape (PZ6670)

2010 Ford Escape (PZ6670), gas engine, automatic transmission, air conditioning, heat, Am/Fm CD stereo, cruise control, power windows & locks, 4 door, P235/70R16 tires, shows 159,127 miles, Unit# 327. Notes: This Escape hit a deer and has damage. Please call seller for more information. Item Location: Waukon, IA 52172 Equipment Sold "AS IS, WHERE IS": All equipment/property is sold "AS IS, WHERE IS" with no warranty or guarantees, expressed or implied, No operational assessments or testing have been made by Del Peterson on this item, it has been photographed ONLY.



#113 - Progressive Tool Bar (PZ6691)

Progressive Tool Bar (PZ6691), Progressive 1500 17 knife pull type tool bar, coulters, 18" spring loaded double disc sealers, hydraulic wings, flotation tires, rear hitch, Dickey John monitor. Notes: Item Location: Bourbonnais, IL 60914 Equipment Sold "AS IS, WHERE IS": All equipment/property is sold "AS IS, WHERE IS" with no warranty or guarantees, expressed or implied, No operational assessments or testing have been made by Del Peterson on this item, it has been photographed ONLY.



#114 - P & H Tool Bar (PZ6692)

P & H Tool Bar (PZ6692), P & H 27.5' 11x30 tool bar, 3 point, coulters, hydraulic wings, rear hitch, Dickey John monitor, Unit# 304. Notes: Item Location: Bourbonnais, IL 60914 Equipment Sold "AS IS, WHERE IS": All equipment/property is sold "AS IS, WHERE IS" with no warranty or guarantees, expressed or implied, No operational assessments or testing have been made by Del Peterson on this item, it has been photographed ONLY.



#115 - P & H Tool Bar (PZ6693)

P & P & H Tool Bar (PZ6693), P & H 27.5' 11x30 tool bar, 3 point, coulters, hydraulic wings, rear hitch, Dickey John monitor, Unit# 308. Notes: Item Location: Bourbonnais, IL 60914 Equipment Sold "AS IS, WHERE IS": All equipment/property is sold "AS IS, WHERE IS" with no warranty or guarantees, expressed or implied, No operational assessments or testing have been made by Del Peterson on this item, it has been photographed ONLY.



#116 - DMI Tool Bar (PZ6694)

DMI Tool Bar (PZ6694), DMI 27.5' 11x30 tool bar, 3 point, coulters, double disc sealers, hydraulic wings, rear hitch, Dickey John monitor, Unit# 311 Notes: Item Location: Bourbonnais, IL 60914 Equipment Sold "AS IS, WHERE IS": All equipment/property is sold "AS IS, WHERE IS" with no warranty or guarantees, expressed or implied, No operational assessments or testing have been made by Del Peterson on this item, it has been photographed ONLY.



#117 - DMI Liquid Applicator (PZ6695)

DMI Liquid Applicator (PZ6695), DMI 15 coulter liquid applicator, 1300 gallon poly liquid system, John Blue ground driven pump, hydraulic wings, lights. Notes: Item Location: Bourbonnais, IL 60914 Equipment Sold "AS IS, WHERE IS": All equipment/property is sold "AS IS, WHERE IS" with no warranty or guarantees, expressed or implied, No operational assessments or testing have been made by Del Peterson on this item, it has been photographed ONLY.



#118 - 1964 Cherokee Steel LP Tank (PZ6678)

1964 Cherokee Steel LP Tank (PZ6678), 1964 Cherokee Steel 18,000 gallon LP tank, Master tank volume gauge, data plate, S/N 3955. Notes: This tank must be removed by November 30, 2017 with NO exceptions. Dismantle, removal and transportation is at the expense, risk and liability of the buyer. Item Location: Calamus, IA 52729 Equipment Sold "AS IS, WHERE IS": All equipment/property is sold "AS IS, WHERE IS" with no warranty or guarantees, expressed or implied, No operational assessments or testing have been made by Del Peterson on this item, it has been photographed ONLY.



#119 - DMI Liquid Applicator (PZ6696)

DMI Liquid Applicator (PZ6696), DMI 2800 11 coulter liquid applicator, 750 gallon poly liquid system, John Blue ground driven pump, hydraulic wings, flotation tires. Notes: Item Location: Bourbonnais, IL 60914 Equipment Sold "AS IS, WHERE IS": All equipment/property is sold "AS IS, WHERE IS" with no warranty or guarantees, expressed or implied, No operational assessments or testing have been made by Del Peterson on this item, it has been photographed ONLY.



#120 - 1996 Ford F350 Super Duty XL Flatbed (PZ6689)

1996 Ford F350 Super Duty XL Flatbed (PZ6689), 4x4, 7.3L diesel engine, automatic transmission, heat, Am/Fm cassette radio, running boards, aluminum flatbed, dually, spring loaded bumper, shows 192,039 miles. Notes: Rear fuel tank is falling out due to frame rails rusting. Not road worthy, must be trailered till fixed. Item Location: Bourbonnais, IL 60914 Equipment Sold "AS IS, WHERE IS": All equipment/property is sold "AS IS, WHERE IS" with no warranty or guarantees, expressed or implied, No operational assessments or testing have been made by Del Peterson on this item, it has been photographed ONLY.



#121 - Western Snow Plow (PZ6690)

Western Snow Plow (PZ6690), Western 7.5' uni-mount snow plow, lights. Notes: Item Location: Bourbonnais, IL 60914 Equipment Sold "AS IS, WHERE IS": All equipment/property is sold "AS IS, WHERE IS" with no warranty or guarantees, expressed or implied, No operational assessments or testing have been made by Del Peterson on this item, it has been photographed ONLY.



#122 - Blu Jet Tool Bar (PZ6700)

Blu Jet Tool Bar (PZ6700), Blu Jet AT5000 19 knife pull type tool bar, coulters, double disc sealers, direct injection, Raven super cooler, hydraulic wings, rear hitch, Unit# 2-22. Notes: Item Location: Duncombe, IA 50532 Equipment Sold "AS IS, WHERE IS": All equipment/property is sold "AS IS, WHERE IS" with no warranty or guarantees, expressed or implied, No operational assessments or testing have been made by Del Peterson on this item, it has been photographed ONLY.



#123 - Blu Jet Tool Bar (PZ6701)

Blu Jet Tool Bar (PZ6701), Blu Jet AT5000 19 knife pull type tool bar, coulters, double disc sealers, direct injection, Raven super cooler, hydraulic wings, rear hitch, Unit# 19. Notes: Item Location: Duncombe, IA 50532 Equipment Sold "AS IS, WHERE IS": All equipment/property is sold "AS IS, WHERE IS" with no warranty or guarantees, expressed or implied, No operational assessments or testing have been made by Del Peterson on this item, it has been photographed ONLY.



#124 - Kinze Planter (PZ6702)

Kinze Planter (PZ6702), Kinze 2600 16/31 planter, whippers, box extensions, markers. Notes: Item Location: Duncombe, IA 50532 Equipment Sold "AS IS, WHERE IS": All equipment/property is sold "AS IS, WHERE IS" with no warranty or guarantees, expressed or implied, No operational assessments or testing have been made by Del Peterson on this item, it has been photographed ONLY.



#125 - 1963 Delta Southern NH3 Tank (PZ6679)

1963 Delta Southern NH3 Tank (PZ6679), 1963 Delta Southern 12,000 gallon NH3 storage tank, Magnetel tank volume gauge, data plate, National Board# 621. Notes: This tank must be removed by November 30, 2017 with NO exceptions. Dismantle, removal and transportation is at the expense, risk and liability of the buyer. Item Location: Delmar, IA 52037 Equipment Sold "AS IS, WHERE IS": All equipment/property is sold "AS IS, WHERE IS" with no warranty or guarantees, expressed or implied, No operational assessments or testing have been made by Del Peterson on this item, it has been photographed ONLY.



#126 - 2015 Doyle Dry Tender Trailer (NP5035)

2015 Doyle Dry Tender Trailer (NP5035), 8 ton capacity, split compartment, 304 stainless steel, side discharge auger, AGRI-COVER electric roll tarp, rear ladder, Kubota 0.898L water cooled diesel engine, diesel tank, hydraulic tank, LOFA Industries, Inc. electric start control panel, mounted on 2015 B&B gooseneck trailer, Model DDT8EGN-10, tandem axle, spring suspension, ST235/80R16 tires, Break-Away System, GVWR 20,000lbs. Notes: Item Location: Palmyra, MO 63461 Equipment Sold "AS IS, WHERE IS": All equipment/property is sold "AS IS, WHERE IS" with no warranty or guarantees, expressed or implied, No operational assessments or testing have been made by Del Peterson on this item, it has been photographed ONLY.



#127 - 2007 Layco Blender (PZ6698)

2007 Layco Blender (PZ6698), 2007 Layco 10 ton stainless steel drum blender, stainless steel hopper, approx. 30' stainless steel loadout conveyor, digital readout. Notes: Item Location: Cerro Gordo, IL 61818 Equipment Sold "AS IS, WHERE IS": All equipment/property is sold "AS IS, WHERE IS" with no warranty or guarantees, expressed or implied, No operational assessments or testing have been made by Del Peterson on this item, it has been photographed ONLY.



#128 - Hutchinson Super Scoop (PZ6681)

Hutchinson Super Scoop (PZ6681), Hutchinson super scoop rear mount grain auger, PTO, portable, hydraulic chute. Notes: Item Location: Delmar, IA 52037 Equipment Sold "AS IS, WHERE IS": All equipment/property is sold "AS IS, WHERE IS" with no warranty or guarantees, expressed or implied, No operational assessments or testing have been made by Del Peterson on this item, it has been photographed ONLY.



#129 - 1987 Freightliner Grain Truck (PZ6682)

1987 Freightliner Grain Truck (PZ6682), Cummins diesel engine, 13-speed manual transmission, air conditioning, heat, Am/Fm cassette radio, tandem axle, full screw, 3rd axle, air ride suspension, engine brake, 20' steel grain box, wood floor, cargo doors, grain chute, hoist, roll over tarp, 11R24.5 front tires, 11R22.5 rear & cheater tires, shows 182,059 miles. Notes: New clutch fan approx. 6 months ago Item Location: Delmar, IA 52037 Equipment Sold "AS IS, WHERE IS": All equipment/property is sold "AS IS, WHERE IS" with no warranty or guarantees, expressed or implied, No operational assessments or testing have been made by Del Peterson on this item, it has been photographed ONLY.



#130 - 2008 John Deere 325 Skid Steer (PZ6667, Unit 17337)

2008 John Deere 325 Skid Steer (PZ6667), diesel engine, hydrostatic transmission, canopy, no bucket, 305/70D16.5 tires, shows 2318 hours, Unit# 17337. Notes: This skid steer has a oil leak. Please call seller for more information. Item Location: Plainfield, IA 50666 Equipment Sold "AS IS, WHERE IS": All equipment/property is sold "AS IS, WHERE IS" with no warranty or guarantees, expressed or implied, No operational assessments or testing have been made by Del Peterson on this item, it has been photographed ONLY.



#131 - 2009 Wilson DWH-500C Grain Trailer (PZ6672)

2009 Wilson DWH-500C Grain Trailer (PZ6672), Wilson Commander 43' aluminum hopper bottom grain trailer, tandem axle, air ride suspension, electric roll over tarp, 285/75R24.5 tires, aluminum rims, Unit# 62T. Notes: Item Location: Hopkinton, IA 52237 Equipment Sold "AS IS, WHERE IS": All equipment/property is sold "AS IS, WHERE IS" with no warranty or guarantees, expressed or implied, No operational assessments or testing have been made by Del Peterson on this item, it has been photographed ONLY.



#132 - 1965 Delta Southern NH3 Tank (PZ6680)

1965 Delta Southern NH3 Tank (PZ6680), 1965 Delta Southern 12,000 gallon NH3 storage tank, Magnetel tank volume gauge, data plate, National Board# 1229. Notes: This tank must be removed by November 30, 2017 with NO exceptions. Dismantle, removal and transportation is at the expense, risk and liability of the buyer. Item Location: Delmar, IA 52037 Equipment Sold "AS IS, WHERE IS": All equipment/property is sold "AS IS, WHERE IS" with no warranty or guarantees, expressed or implied, No operational assessments or testing have been made by Del Peterson on this item, it has been photographed ONLY.



#133 - NH3 Tool Bar (PZ6659, Unit 20038)

NH3 Tool Bar (PZ6659), 7 knife 3 point tool bar, coulters, Continental B9500, Unit# 20038. Notes: Item Location: Aredale, IA 50605 Equipment Sold "AS IS, WHERE IS": All equipment/property is sold "AS IS, WHERE IS" with no warranty or guarantees, expressed or implied, No operational assessments or testing have been made by Del Peterson on this item, it has been photographed ONLY.



#134 - 1988 Great Dane Flatbed Trailer (PZ6653)

1988 Great Dane Flatbed Trailer (PZ6653), 1988 Great Dane approx. 45' flabed trailer, tandem axle, sliding axle, 11R22.5 tires, Unit# 161T. Notes: Item Location: Ackley, IA 50601 Equipment Sold "AS IS, WHERE IS": All equipment/property is sold "AS IS, WHERE IS" with no warranty or guarantees, expressed or implied, No operational assessments or testing have been made by Del Peterson on this item, it has been photographed ONLY.



#135 - 2003 B-B Flatbed Trailer (PZ6652)

2003 B-B Flatbed Trailer (PZ6652), 2003 B-B flabed trailer, tandem axle, dual wheels, 255/70R22.5 tires, Unit# 163T. Notes: Dry Tender NOT included. Item Location: Ackley, IA 50601 Equipment Sold "AS IS, WHERE IS": All equipment/property is sold "AS IS, WHERE IS" with no warranty or guarantees, expressed or implied, No operational assessments or testing have been made by Del Peterson on this item, it has been photographed ONLY.



#136 - 2011 Merritt Dry Tender Trailer (PZ6654)

2011 Merritt Dry Tender Trailer (PZ6654), 2011 Merritt MVT model 38'6X096X068X2Ff-X2SXMVT dry tender trailer, tandem axle, Rapat under hopper conveyor, Rapat rear discharge belt conveyor, Agri-Cover electric roll over tarp, 11R24.5 tires, Unit# 143T. Notes: Item Location: Ackley, IA 50601 Equipment Sold "AS IS, WHERE IS": All equipment/property is sold "AS IS, WHERE IS" with no warranty or guarantees, expressed or implied, No operational assessments or testing have been made by Del Peterson on this item, it has been photographed ONLY.



#137 - 2002 Warren Feed Trailer (PZ6673)

2002 Warren Feed Trailer (PZ6673), Warren 40' 24 ton aluminum feed trailer, 9 compartment, hydraulic auger, tandem axle, air ride suspension, 11R22.5 tires, Unit# 63T. Notes: Item Location: Hopkinton, IA 52237 Equipment Sold "AS IS, WHERE IS": All equipment/property is sold "AS IS, WHERE IS" with no warranty or guarantees, expressed or implied, No operational assessments or testing have been made by Del Peterson on this item, it has been photographed ONLY.



#138 - 1992 GMC TopKick Truck (PZ6656, Unit 21087)

1992 GMC TopKick Truck (PZ6656), gas engine, 5 speed transmission, 2 speed rear end, air conditioning, heat, single axle, 11R22.5 tires, shows 216,972 miles, Unit# 21087. Notes: Item Location: Dike, IA 50624 Equipment Sold "AS IS, WHERE IS": All equipment/property is sold "AS IS, WHERE IS" with no warranty or guarantees, expressed or implied, No operational assessments or testing have been made by Del Peterson on this item, it has been photographed ONLY.



#139 - 1965 Beaird LP Storage Tank (DR6517)

1965 Beaird LP Storage Tank (DR6517), 1965 Beaird 18,377 gallon LP storage tank, data plate, Tank Only. Notes: This tank must be removed by November 30, 2017 with NO exceptions. Dismantle, removal and transportation is at the expense, risk and liability of the buyer. Item Location: Lake Mills, IA 50450 Equipment Sold "AS IS, WHERE IS": All equipment/property is sold "AS IS, WHERE IS" with no warranty or guarantees, expressed or implied, No operational assessments or testing have been made by Del Peterson on this item, it has been photographed ONLY.



#140 - 1978 GMC 6500 Liquid Nurse Truck (PZ6657, Unit 18609)

1978 GMC 6500 Liquid Nurse Truck (PZ6657), gas engine, 5 speed transmission, 2 speed rear end, heat, Am/Fm radio, single axle, 1600 gallon stainless steel liquid nurse tank, top poly rinse tank, 11R22.5 front tires, 9.00R20 rear tires, shows 80,158 miles, Unit# 18609. Notes: Item Location: Dike, IA 50624 Equipment Sold "AS IS, WHERE IS": All equipment/property is sold "AS IS, WHERE IS" with no warranty or guarantees, expressed or implied, No operational assessments or testing have been made by Del Peterson on this item, it has been photographed ONLY.



#141 - 2009 IHC Work Star 7500 Truck (PZ6668)

2009 IHC Work Star 7500 Truck (PZ6668), Maxxforce diesel engine, Allison automatic transmission, air conditioning, heat, Am/Fm radio, cruise control, tandem axle, full screw, air ride suspension, 315/80R22.5 front tires, 295/75R22.5 rear tires, Unit# 217. Notes: This truck is a NON Runner. Item Location: Waterloo, IA 50703 Equipment Sold "AS IS, WHERE IS": All equipment/property is sold "AS IS, WHERE IS" with no warranty or guarantees, expressed or implied, No operational assessments or testing have been made by Del Peterson on this item, it has been photographed ONLY.



#142 - 1996 Freightliner Dry Truck (PZ6697)

1996 Freightliner Dry Truck (PZ6697), Cummins M11 diesel engine, 10 speed transmission, air conditioning, heat, Am/Fm radio, cruise control, tandem axle, full screw, air ride suspension, PTO, Willmar 1600 16 ton dry tender box, rear discharge auger, Lundell poly cup auger for fertilizer/seed, all hydraulic, roll over tarp, 11R22.5 tires, 80% steer, 30% drive, 2 aluminum & 8 steel wheels, shows 834,984 miles, Unit# 42511. Notes: PLEASE ALLOW AT LEAST 60 DAYS FOR TITLE TRANSFER. Item Location: Dwight, IL 60420 Equipment Sold "AS IS, WHERE IS": All equipment/property is sold "AS IS, WHERE IS" with no warranty or guarantees, expressed or implied, No operational assessments or testing have been made by Del Peterson on this item, it has been photographed ONLY.



#143 - 2005 Freightliner Business Class M2 Feed Truck (PZ6651)

2005 Freightliner Business Class M2 Feed Truck (PZ6651), Mercedes - Benz diesel engine, 10 speed transmission, air conditioning, heat, Am/Fm radio, cruise control, tandem axle, full screw, cheater axle, air ride suspension, CEI Pacer model A35HCL 6 compartment aluminum bulk feed body (S/N A35HCL-24-2615), hydraulic auger, BF Goodrich 425/65R22.5 front tires, 11R22.5 rear tires, 275/80R22.5 cheater tires, shows 361,237 miles, Unit# 238. Notes: Item Location: Hubbard, IA 50122 Equipment Sold "AS IS, WHERE IS": All equipment/property is sold "AS IS, WHERE IS" with no warranty or guarantees, expressed or implied, No operational assessments or testing have been made by Del Peterson on this item, it has been photographed ONLY.



#144 - 1989 Ford L9000 Grain Truck (PZ6669)

1989 Ford L9000 Grain Truck (PZ6669), Cat diesel engine, manual transmission, air conditioning, heat, Am/Fm radio, tandem axle, full screw, Kann 20' steel grain box, cargo doors, grain chute, hoist, roll over tarp, 425/65R22.5 front tires, 11R22.5 rear tires, approx. 760,369 miles, Unit# 220. Notes: Item Location: Elkader, IA 52043 Equipment Sold "AS IS, WHERE IS": All equipment/property is sold "AS IS, WHERE IS" with no warranty or guarantees, expressed or implied, No operational assessments or testing have been made by Del Peterson on this item, it has been photographed ONLY.



#145 - Trinity LP Storage Tank (DR6519)

Trinity LP Storage Tank (DR6519), Trinity 18,000 gallon LP storage tank, data plate, Tank Only. Notes: This tank must be removed by September 30, 2017 with NO exceptions. Dismantle, removal and transportation is at the expense, risk and liability of the buyer. This tank sits on rented property, buyer may be able to get extended terms for \$100 per month from land owner. Please call seller for further information. Item Location: Bricelyn, MN 56014 Equipment Sold "AS IS, WHERE IS": All equipment/property is sold "AS IS, WHERE IS" with no warranty or guarantees, expressed or implied, No operational assessments or testing have been made by Del Peterson on this item, it has been photographed ONLY.



#146 - NH3 Storage Tank (PZ6675)

NH3 Storage Tank (PZ6675), 18,000 gallon NH3 storage tank, Magnetel tank volume gauge, data plate, tank only. Notes: This tank must be removed by November 30, 2017 with NO exceptions. Dismantle, removal and transportation is at the expense, risk and liability of the buyer. Item Location: Anamosa, IA 52205 Equipment Sold "AS IS, WHERE IS": All equipment/property is sold "AS IS, WHERE IS" with no warranty or guarantees, expressed or implied, No operational assessments or testing have been made by Del Peterson on this item, it has been photographed ONLY.



#147 - Onan Electric Generator (NP5058)

Onan Electric Generator (NP5058), Model 17.5RDJF-4R/15470AA, diesel engine, 120/208 Volts, 3 phase, 17.5 KW, 60 HZ, 59 AMPS, 1800 RPM, single axle, bumper hitch, ST175/80R13 tires (spare tire). Notes: Item Location: Monmouth, IL 61462 Equipment Sold "AS IS, WHERE IS": All equipment/property is sold "AS IS, WHERE IS" with no warranty or guarantees, expressed or implied, No operational assessments or testing have been made by Del Peterson on this item, it has been photographed ONLY.



#148 - LandPride Offset Rotary Cutter (NP5060)

LandPride Offset Rotary Cutter (NP5060), Model RC5010, 10' offset, 540 PTO, single hydraulic fold. Notes: Wing DOES NOT fold up all the way. Item Location: Monmouth, IL 61462 Equipment Sold "AS IS, WHERE IS": All equipment/property is sold "AS IS, WHERE IS" with no warranty or guarantees, expressed or implied, No operational assessments or testing have been made by Del Peterson on this item, it has been photographed ONLY.



#149 - Zebra 105 SE Printer (NP5055)

Zebra 105 SE Printer (NP5055). Notes: Operation of printer unknown. Item Location: Monmouth, IL 61462 Equipment Sold "AS IS, WHERE IS": All equipment/property is sold "AS IS, WHERE IS" with no warranty or guarantees, expressed or implied, No operational assessments or testing have been made by Del Peterson on this item, it has been photographed ONLY.



#150 - (9) Assorted John Deere Planter Boxes (NP5049)

(9) Assorted John Deere Planter Boxes (NP5049). Notes: Item Location: Monmouth, IL 61462 Equipment Sold "AS IS, WHERE IS": All equipment/property is sold "AS IS, WHERE IS" with no warranty or guarantees, expressed or implied, No operational assessments or testing have been made by Del Peterson on this item, it has been photographed ONLY.



#151 - (7) Assorted Kinze Planter Boxes (NP5050)

(7) Assorted Kinze Planter Boxes (NP5050). Notes: Item Location: Monmouth, IL 61462 Equipment Sold "AS IS, WHERE IS": All equipment/property is sold "AS IS, WHERE IS" with no warranty or guarantees, expressed or implied, No operational assessments or testing have been made by Del Peterson on this item, it has been photographed ONLY.



#152 - Trinity NH3 Storage Tank (PZ6676)

Trinity NH3 Storage Tank (PZ6676), Trinity 18,000 gallon NH3 storage tank, skids, Master tank volume gauge, data plate, tank only. Notes: This tank must be removed by November 30, 2017 with NO exceptions. Dismantle, removal and transportation is at the expense, risk and liability of the buyer. Item Location: Anamosa, IA 52205 Equipment Sold "AS IS, WHERE IS": All equipment/property is sold "AS IS, WHERE IS" with no warranty or guarantees, expressed or implied, No operational assessments or testing have been made by Del Peterson on this item, it has been photographed ONLY.



#153 - Loadout & Plumbing (PZ6677)

Loadout & Plumbing (PZ6677), Corken compressor, Baldor 10 hp electric motor, plumbing, 4 station loadout, flip out stands, wood deck. Notes: This plumbing & loadout must be removed by November 30, 2017 with NO exceptions. Dismantle, removal and transportation is at the expense, risk and liability of the buyer. Item Location: Anamosa, IA 52205 Equipment Sold "AS IS, WHERE IS": All equipment/property is sold "AS IS, WHERE IS" with no warranty or guarantees, expressed or implied, No operational assessments or testing have been made by Del Peterson on this item, it has been photographed ONLY.



#154 - 1998 ALMACO/John Deere TP2 Research Planter (NP5059)

1998 ALMACO/John Deere TP2 Research Planter (NP5059), 6 row 30", MaxEmerge Plus VacuMeter, trash whippers, gauge wheels, row markers, 7.60-15 transport tires, 3 operator seats, ALMACO planter system monitor, (6) extra John Deere planter boxes. Notes: Item Location: Monmouth, IL 61462 Equipment Sold "AS IS, WHERE IS": All equipment/property is sold "AS IS, WHERE IS" with no warranty or guarantees, expressed or implied, No operational assessments or testing have been made by Del Peterson on this item, it has been photographed ONLY.



#155 - 1999 Sortex 3000 Series Color Sorter (NP5051)

1999 Sortex 3000 Series Color Sorter (NP5051), Model 3401HPS, 110 volts, 60 HZ, single phase, Syntron Magnetic Feeder. Notes: Item Location: Monmouth, IL 61462 Equipment Sold "AS IS, WHERE IS": All equipment/property is sold "AS IS, WHERE IS" with no warranty or guarantees, expressed or implied, No operational assessments or testing have been made by Del Peterson on this item, it has been photographed ONLY.



#156 - Old Mill Seed Counter (NP5056)

Old Mill Seed Counter (NP5056) Model 850-2, 105-125 Volts, 50-60 HZ, 5 AMP. Notes: Operation of seed counter unknown. Item Location: Monmouth, IL 61462 Equipment Sold "AS IS, WHERE IS": All equipment/property is sold "AS IS, WHERE IS" with no warranty or guarantees, expressed or implied, No operational assessments or testing have been made by Del Peterson on this item, it has been photographed ONLY.



#157 - 1997 New Western Seed Cleaner (NP5063)

1997 New Western Seed Cleaner (NP5063), Model HS - 36, Tecumseh XL gas motor. Notes: Item Location: Monmouth, IL 61462 Equipment Sold "AS IS, WHERE IS": All equipment/property is sold "AS IS, WHERE IS" with no warranty or guarantees, expressed or implied, No operational assessments or testing have been made by Del Peterson on this item, it has been photographed ONLY.



#158 - (3) Delta Shopmaster Table Saws (NP5054)

(3) Delta Shopmaster Table Saws (NP5054) 120 volts, 60HZ, 4700 RPM, used for stalk splitting. Notes: Item Location: Monmouth, IL 61462 Equipment Sold "AS IS, WHERE IS": All equipment/property is sold "AS IS, WHERE IS" with no warranty or guarantees, expressed or implied, No operational assessments or testing have been made by Del Peterson on this item, it has been photographed ONLY.



#159 - John Deere 660 Tiller (NP5062)

John Deere 660 Tiller (NP5062), 3 point, 540 PTO. Notes: Item Location: Monmouth, IL 61462 Equipment Sold "AS IS, WHERE IS": All equipment/property is sold "AS IS, WHERE IS" with no warranty or guarantees, expressed or implied, No operational assessments or testing have been made by Del Peterson on this item, it has been photographed ONLY.



#160 - 1969 Flint Steel NH3 Storage Tank (PZ6683)

1969 Flint Steel NH3 Storage Tank (PZ6683), 1969 Flint Steel 18,000 gallon NH3 storage tank, Accu-Max tank volume gauge, data plate, Tank ONLY, National Board# 54441. Notes: TANK ONLY. This tank must be removed by September 30, 2017 with NO exceptions. Dismantle, removal and transportation is at the expense, risk and liability of the buyer. Item Location: Lone Tree, IA 52755 Equipment Sold "AS IS, WHERE IS": All equipment/property is sold "AS IS, WHERE IS" with no warranty or guarantees, expressed or implied, No operational assessments or testing have been made by Del Peterson on this item, it has been photographed ONLY.



#161 - Hyster Forklift (NP5093)

Hyster Forklift (NP5093), Model H30XL, LP gas, shuttle shift, 3,000lb lift capacity, forks, side shift, tilt, 6.50-10 rear tires, 5.00-8 front tires, lights, approx. weight 6,200lbs, shows 5,839 hours. Notes: Item Location: Girard, KS 66743 Equipment Sold "AS IS, WHERE IS": All equipment/property is sold "AS IS, WHERE IS" with no warranty or guarantees, expressed or implied, No operational assessments or testing have been made by Del Peterson on this item, it has been photographed ONLY.



#162 - Clark Forklift (NP5094)

Clark Forklift (NP5094), Model GCX25, LP gas, shuttle shift, 3,500lb capacity, forks, tilt, lights, hard tire, park brake, shows 4,533 hours. Notes: Item Location: Girard, KS 66743 Equipment Sold "AS IS, WHERE IS": All equipment/property is sold "AS IS, WHERE IS" with no warranty or guarantees, expressed or implied, No operational assessments or testing have been made by Del Peterson on this item, it has been photographed ONLY.



#163 - Yale Forklift (NP5095)

Yale Forklift (NP5095), Model GLC040AENUAE083, LP gas, shuttle shift, 4,000lb capacity, forks, tilt, 457 x 178 x 308 front tires, 15 x 5 x 11 1/4 rear tires, park brake, truck weight 7,244lbs, shows 12,514 hours. Notes: Item Location: Girard, KS 66743 Equipment Sold "AS IS, WHERE IS": All equipment/property is sold "AS IS, WHERE IS" with no warranty or guarantees, expressed or implied, No operational assessments or testing have been made by Del Peterson on this item, it has been photographed ONLY.



#164 - 1996 Terra Gator 1844 Dry Floater (NP5097)

1996 Terra Gator 1844 Dry Floater (NP5097), Cummins diesel engine (S/N 60316905), automatic transmission, heat, air conditioning, Am/Fm radio, New Leader L-2020-12 dry spreader box (S/N 101401), dual spinners, hydraulic, manual roll tarp, 66x43.00-25 rear tires, 48x31.00-20 front tires, Raven SCS660 controller, DICKEY-john DjCMS100 & DICKEY-john DjCCS100, shows 30,925 miles, shows 7,146 hours. Notes: Engine was just recently replaced on this machine, contact seller for more details. Item Location: Girard, KS 66743 Equipment Sold "AS IS, WHERE IS": All equipment/property is sold "AS IS, WHERE IS" with no warranty or guarantees, expressed or implied, No operational assessments or testing have been made by Del Peterson on this item, it has been photographed ONLY.



#165 - 1991 International 4900 Feed Truck (NP5096)

1991 International 4900 Feed Truck (NP5096), IHC diesel engine, International 6 plus transmission, heat, Am/Fm radio, single axle with air pusher axle, CEI Pacer Model A35L feed body (S/N A35L-20), overhead swing auger, 4 compartment, rear hydraulic controls, 11R22.5 tires, Unit #24, shows 96,107 miles. Notes: Item Location: Girard, KS 66743 Equipment Sold "AS IS, WHERE IS": All equipment/property is sold "AS IS, WHERE IS" with no warranty or guarantees, expressed or implied, No operational assessments or testing have been made by Del Peterson on this item, it has been photographed ONLY.



#167 - Anhydrous Storage Tank (NP5027)

Anhydrous Storage Tank (NP5027), 1964 Flint Steel Corporation, 12,000 gallon capacity, tank volume gauge, HEAD THK .322, SHELL THK .5625, Diameter 82.5", Length 46' 10 1/2", data plate, Nat'l Board #53003. Notes: TANK & VALVE ONLY, NO PLUMBING. This item must be dismantled and removed by October 8, 2017, NO EXCEPTIONS. Proof of insurance must be provided before the dismantle process can begin. Dismantle, removal and transportation is at the expense, risk and liability of the buyer. Item Location: Pleasant Hill, MO 64080 Equipment Sold "AS IS, WHERE IS": All equipment/property is sold "AS IS, WHERE IS" with no warranty or guarantees, expressed or implied, No operational assessments or testing have been made by Del Peterson on this item, it has been photographed ONLY.



#168 - Razor Zero Turn Mower (NP5103)

Razor Zero Turn Mower (NP5103), 52" cut, Honda 18HP gas motor. Notes: Item Location: Girard, KS 66743 Equipment Sold "AS IS, WHERE IS": All equipment/property is sold "AS IS, WHERE IS" with no warranty or guarantees, expressed or implied, No operational assessments or testing have been made by Del Peterson on this item, it has been photographed ONLY.



#169 - 1994 Kenworth T600 Fuel Truck (NP5102)

1994 Kenworth T600 Fuel Truck (NP5102), Cat 3406 diesel engine (500HP), 10 speed transmission, heat, air conditioning, Am/Fm radio, tandem axle w/ 3rd air lift axle, New Progress 4,500 gallon fuel body, 4 compartment (2,000 - 1,000 - 1,000 - 500), dual pumps and meters, dual 1 1/4" electric hose reels w/ automatic nozzles (used daily), bottom load set-up, 285/75R24.5 tires 80%, shows 882,522 miles, Unit #99. Notes: Meter calibration 12/2016, annual leak check and external visual inspection 10/2016. Item Location: Girard, KS 66743 Equipment Sold "AS IS, WHERE IS": All equipment/property is sold "AS IS, WHERE IS" with no warranty or guarantees, expressed or implied, No operational assessments or testing have been made by Del Peterson on this item, it has been photographed ONLY.



#170 - 2007 Geringhoff NorthStar Corn Head (NP5090)

2007 Geringhoff NorthStar Corn Head (NP5090), Model NS800, 8 row 30", lights, 540 PTO, 5159 weights lbs. Notes: Item Location: Valley Center, KS 67147 Equipment Sold "AS IS, WHERE IS": All equipment/property is sold "AS IS, WHERE IS" with no warranty or guarantees, expressed or implied, No operational assessments or testing have been made by Del Peterson on this item, it has been photographed ONLY.



#171 - John Deere 1750 Conservation TP2 Research Planter (NP5061)

John Deere 1750 Conservation TP2 Research Planter (NP5061), 6 row, MaxEmerge Plus VacuMeter, gauge wheels, row markers, 7.60-15 transport tires, 2 operator seats, DYNAPAR MAX jr Count 2 box, ALMACO planter system monitor. Notes: Extra ALMACO parts and wheels, (2) extra planter boxes. Item Location: Monmouth, IL 61462 Equipment Sold "AS IS, WHERE IS": All equipment/property is sold "AS IS, WHERE IS" with no warranty or guarantees, expressed or implied, No operational assessments or testing have been made by Del Peterson on this item, it has been photographed ONLY.



#172 - John Deere 856 Cultivator (NP5066)

John Deere 856 Cultivator (NP5066), 3 point, 6 row 30", dual hydraulic fold. Notes: Item Location: Monmouth, IL 61462 Equipment Sold "AS IS, WHERE IS": All equipment/property is sold "AS IS, WHERE IS" with no warranty or guarantees, expressed or implied, No operational assessments or testing have been made by Del Peterson on this item, it has been photographed ONLY.



#173 - Kubota M4050 Tractor (NP5046)

Kubota M4050 Tractor (NP5046), diesel engine model S2600-AL, manual transmission, roll bar, 13.6-28 rear tires, 6.00-16 front tires, (7) front mounted weights, PTO, 3 point, single port hydraulics, shows 3,982 hours. Notes: Item Location: Monmouth, IL 61462 Equipment Sold "AS IS, WHERE IS": All equipment/property is sold "AS IS, WHERE IS" with no warranty or guarantees, expressed or implied, No operational assessments or testing have been made by Del Peterson on this item, it has been photographed ONLY.



#174 - John Deere 6410 Tractor (NP5047)

John Deere 6410 Tractor (NP5047), John Deere diesel engine, manual transmission, cab, heat, air conditioning, Am/Fm radio, 13.6-46 rear tires, 13.6-38 front tires, PTO, 3 point, 3 port hydraulics, rear lights, shows 3,294 hours. Notes: Item Location: Monmouth, IL 61462 Equipment Sold "AS IS, WHERE IS": All equipment/property is sold "AS IS, WHERE IS" with no warranty or guarantees, expressed or implied, No operational assessments or testing have been made by Del Peterson on this item, it has been photographed ONLY.



#175 - Bobcat 8811 Backhoe Attachment (NP5048)

Bobcat 8811 Backhoe Attachment (NP5048), outriggers, approx. 15" toothed bucket, hydraulic hand controls, operator seat. Notes: Skid steer shown in pictures DOES NOT SELL with this lot. Item Location: Monmouth, IL 61462 Equipment Sold "AS IS, WHERE IS": All equipment/property is sold "AS IS, WHERE IS" with no warranty or guarantees, expressed or implied, No operational assessments or testing have been made by Del Peterson on this item, it has been photographed ONLY.



#176 - Anhydrous Storage Tank (NP5028)

Anhydrous Storage Tank (NP5028), 1963 Flint Steel Corporation, 12,000 gallon capacity, tank volume gauge, HEAD THK .322, SHELL THK .5625, Diameter 82.5", Length 46' 10 1/2", data plate, Nat'l Board #52664. Notes: TANK & VALVE ONLY, NO PLUMBING. This item must be dismantled and removed by October 8, 2017, NO EXCEPTIONS. Proof of insurance must be provided before the dismantle process can begin. Dismantle, removal and transportation is at the expense, risk and liability of the buyer. Item Location: Pleasant Hill, MO 64080 Equipment Sold "AS IS, WHERE IS": All equipment/property is sold "AS IS, WHERE IS" with no warranty or guarantees, expressed or implied, No operational assessments or testing have been made by Del Peterson on this item, it has been photographed ONLY.



#177 - (6) John Deere No-Till Coulters (NP5052)

(6) John Deere No-Till Coulters (NP5052). Notes: Item Location: Monmouth, IL 61462 Equipment Sold "AS IS, WHERE IS": All equipment/property is sold "AS IS, WHERE IS" with no warranty or guarantees, expressed or implied, No operational assessments or testing have been made by Del Peterson on this item, it has been photographed ONLY.



#178 - (8) Yetter Trash Whippers (NP5053)

(8) Yetter Trash Whippers (NP5053). Notes: Item Location: Monmouth, IL 61462 Equipment Sold "AS IS, WHERE IS": All equipment/property is sold "AS IS, WHERE IS" with no warranty or guarantees, expressed or implied, No operational assessments or testing have been made by Del Peterson on this item, it has been photographed ONLY.



#179 - 2012 Geringhoff NorthStar Elite XL Corn Head (NP5091)

2012 Geringhoff NorthStar Elite XL Corn Head (NP5091), Model NS1200, 12 row 30", lights, 540 PTO, Insight Headsight Inc., 7711 wieghts lbs. Notes: Item Location: Valley Center, KS 67147 Equipment Sold "AS IS, WHERE IS": All equipment/property is sold "AS IS, WHERE IS" with no warranty or guarantees, expressed or implied, No operational assessments or testing have been made by Del Peterson on this item, it has been photographed ONLY.



#180 - Accufast XL Label Affixer (NP5057)

Accufast XL Label Affixer (NP5057), 120 Volts, 60 HZ, 2.0 AMP. Notes: Working order but doesn't apply labels anymore. Item Location: Monmouth, IL 61462 Equipment Sold "AS IS, WHERE IS": All equipment/property is sold "AS IS, WHERE IS" with no warranty or guarantees, expressed or implied, No operational assessments or testing have been made by Del Peterson on this item, it has been photographed ONLY.



#181 - 1998 Hagie 8200 Detasseling Unit (NP5044)

1998 Hagie 8200 Detasseling Unit (NP5044), 4x4, gas engine, canopy, 11.2-24 tires, torque hubs, Hagie Tasseltrol/LS system, shows 992 hours, Notes: Item Location: Thomasboro, IL 61878 Equipment Sold "AS IS, WHERE IS": All equipment/property is sold "AS IS, WHERE IS" with no warranty or guarantees, expressed or implied, No operational assessments or testing have been made by Del Peterson on this item, it has been photographed ONLY.



#182 - FIMCO Poly Liquid Sprayer (NP5071)

FIMCO Poly Liquid Sprayer (NP5071), 60 gallon poly liquid tank, 5 point hitch boom, electric ATU pump. Notes: Item Location: Wichita, KS 67204 Equipment Sold "AS IS, WHERE IS": All equipment/property is sold "AS IS, WHERE IS" with no warranty or guarantees, expressed or implied, No operational assessments or testing have been made by Del Peterson on this item, it has been photographed ONLY.



#183 - AG SPRAY Poly Liquid Sprayer (NP5075)

AG SPRAY Poly Liquid Sprayer (NP5075), spray gun, 60 gallon poly tank, High Flo 3.8 G.P.M. pump. Notes: Item Location: Wichita, KS 67204 Equipment Sold "AS IS, WHERE IS": All equipment/property is sold "AS IS, WHERE IS" with no warranty or guarantees, expressed or implied, No operational assessments or testing have been made by Del Peterson on this item, it has been photographed ONLY.



#184 - SterilGARD Biological Safety Hood (NP5078)

SterilGARD Biological Safety Hood (NP5078), Model VBM-600, Mfg. by The Baker Company, Inc., blower/receptacle, fluorescent/germicidal, Supply Blower (115 Volts, 6.6AMPS each, 1/3HP each), Lights (115 Volts, 1.2AMPS)Receptacle (115 Volts, 5AMPS). Notes: Item Location: Wichita, KS 67204 Equipment Sold "AS IS, WHERE IS": All equipment/property is sold "AS IS, WHERE IS" with no warranty or guarantees, expressed or implied, No operational assessments or testing have been made by Del Peterson on this item, it has been photographed ONLY.



#185 - ThermoForma 86C ULT Freezer (NP5077)

ThermoForma 86C ULT Freezer (NP5077), Model 8558, 230V, 50/60 HZ, single phase, Design Press. 400 psig (high) 174 psig (low).Enviro-Scan control board. Notes: Item Location: Wichita, KS 67204 Equipment Sold "AS IS, WHERE IS": All equipment/property is sold "AS IS, WHERE IS" with no warranty or guarantees, expressed or implied, No operational assessments or testing have been made by Del Peterson on this item, it has been photographed ONLY.



#186 - Feeze Dry Co. Product Chamber (NP5079)

Feeze Dry Co. Product Chamber (NP5079), Model 2000, Labconco Centrivap Cold Trap, Hastings Vacuum Gauge, Welch W Series 1/3HP, 60 HZ, 1725 RPM, 100-120/200-230 Volts, Tecumseh condensing unit. Notes: Item Location: Wichita, KS 67204 Equipment Sold "AS IS, WHERE IS": All equipment/property is sold "AS IS, WHERE IS" with no warranty or guarantees, expressed or implied, No operational assessments or testing have been made by Del Peterson on this item, it has been photographed ONLY.



#187 - Honda North Star Generator (NP5072)

Honda North Star Generator (NP5072), GX Series Commercial, 8000 IPG, extended run 6.5 gallon fuel tank, maintenance-free brushless alternator design, smooth running focus mount isolation system, Honda GX390 13HP gas motor, shows 321 hours. Notes: Item Location: Wichita, KS 67204 Equipment Sold "AS IS, WHERE IS": All equipment/property is sold "AS IS, WHERE IS" with no warranty or guarantees, expressed or implied, No operational assessments or testing have been made by Del Peterson on this item, it has been photographed ONLY.



#188 - Hobart Generator/Welder (NP5073)

Hobart Generator/Welder (NP5073), Champion H500, 4500 watt generator, 140 AMP AC Welder, Briggs & Stratton Intek I/C 305 10HP gas motor. Notes: Item Location: Wichita, KS 67204 Equipment Sold "AS IS, WHERE IS": All equipment/property is sold "AS IS, WHERE IS" with no warranty or guarantees, expressed or implied, No operational assessments or testing have been made by Del Peterson on this item, it has been photographed ONLY.



#188A - Corken Compressor (NP5029)

Corken Compressor (NP5029), Model Z3500HGAMT, S/N 290625KF, LEESON WATTSaver 3 phase 15HP electric motor, Model C254T17FB10C, 60 HZ, 208-230/460 VOLTS, buyer also gets all above ground plumbing/shut-off valves and load out station. Notes: CORKEN COMPRESSOR, LEESON MOTOR AND ALL ABOVE GROUND PLUMBING/SHUT-OFF VALVES/LOAD OUT STATION. This item must be dismantled and removed by October 8, 2017, NO EXCEPTIONS. Proof of insurance must be provided before the dismantle process can begin. Dismantle, removal and transportation is at the expense, risk and liability of the buyer. Item Location: Pleasant Hill, MO 64080 Equipment Sold "AS IS, WHERE IS": All equipment/property is sold "AS IS, WHERE IS" with no warranty or guarantees, expressed or implied, No operational assessments or testing have been made by Del Peterson on this item, it has been photographed ONLY.



#189 - John Deere 4960 MFWD (RMC024)

John Deere 4960 MFWD (RMC024), diesel engine, was over hauled in 2014, cab heat/air conditioning, front suitcase weights and bracket, rear 3 point, rear PTO, 3 rear hydraulic outlets, 18.4R-46 rear tires & duals, shows 16.9R-30 front tires miles, shows hours. Notes: Item Location: Lake Village, AR 71653 Equipment Sold "AS IS, WHERE IS": All equipment/property is sold "AS IS, WHERE IS" with no warranty or guarantees, expressed or implied, No operational assessments or testing have been made by Del Peterson on this item, it has been photographed ONLY.



#190 - 2013 MacDon Draper Head (NP5092)

2013 MacDon Draper Head (NP5092), FD75-D FlexDraper, 40', lights, ST205/75R15 gauge wheels, 540 PTO. Notes: Item Location: Valley Center, KS 67147 Equipment Sold "AS IS, WHERE IS": All equipment/property is sold "AS IS, WHERE IS" with no warranty or guarantees, expressed or implied, No operational assessments or testing have been made by Del Peterson on this item, it has been photographed ONLY.



#191 - 1968 Anhydrous Storage Tank (NP5104)

1968 Anhydrous Storage Tank (NP5104), 18,000 gallon capacity, on skids, tank volume gauge, Corken compressor, Dayton Farm Duty 10HP 3 phase electric motor, includes all above ground plumbing, shut-off valves, and both load out stations, Corken Model 290K3FBA compressor, S/N TC24542, Westinghouse 5HP 3 phase electric motor, compressor cage, data plate, Nat'l Board #3470. Notes: This item must be removed by October 8, 2017, NO EXCEPTIONS. Dismantle, removal and transportation is at the expense, risk and liability of the buyer. Proof of insurance must be provided before the dismantle process can begin. Item Location: Twin Brooks, SD 57269 Equipment Sold "AS IS, WHERE IS": All equipment/property is sold "AS IS, WHERE IS" with no warranty or guarantees, expressed or implied, No operational assessments or testing have been made by Del Peterson on this item, it has been photographed ONLY.



#195 - Convey-All Belt Conveyor (NP5108)

Convey-All Belt Conveyor (NP5108), Convey-All Model TCH-14115A belt conveyor, 22" belt, portable, 540 PTO, 11L-15 tires, S/N 1903087005, w/ Convey-All Model UBSNH-1418 belt conveyor, 22" belt, hydraulic controls, 5.30-12 tires (1 flat). Notes: Item Location: Twin Brooks, SD 57269 Equipment Sold "AS IS, WHERE IS": All equipment/property is sold "AS IS, WHERE IS" with no warranty or guarantees, expressed or implied, No operational assessments or testing have been made by Del Peterson on this item, it has been photographed ONLY.



#196 - Soilection Dry Air Flow System (NP5111)

Soilection Dry Air Flow System (NP5111), Four Bin, Model 4-Bin, approx. 70' boom, no tarp. Notes: Item Location: Appleton, MN 56208 Equipment Sold "AS IS, WHERE IS": All equipment/property is sold "AS IS, WHERE IS" with no warranty or guarantees, expressed or implied, No operational assessments or testing have been made by Del Peterson on this item, it has been photographed ONLY.



#197 - 2007 Felling Dry Tender Frame Trailer (NP5110)

2007 Felling Dry Tender Frame Trailer (NP5110), Model TA452, tandem axle, spring suspension, 255/70R22.5 tires, rear deck approx. 8' wide x 87" long, hydraulic tank, front deck 10' long x 8' wide, air brakes, GVWR 75,000lbs. Notes: Item Location: Appleton, MN 56208 Equipment Sold "AS IS, WHERE IS": All equipment/property is sold "AS IS, WHERE IS" with no warranty or guarantees, expressed or implied, No operational assessments or testing have been made by Del Peterson on this item, it has been photographed ONLY.



#198 - 2001 International Day Cab Truck (NP5109)

2001 International Day Cab Truck (NP5109), Cummins ISM 380ST1, diesel engine (BLOWN MOTOR), Eaton Fuller 10 speed transmission (completely rebuilt), heat, air conditioning, Am/Fm cassette radio, cruise, tandem axle, air ride suspension, 5th wheel plate, single exhaust, dual fuel tanks, 11R22.5 tires, GVWR 52,000lbs. Notes: Engine is BLOWN, transmission has been COMPLETELY REBUILT and truck has a NEW clutch. Item Location: Appleton, MN 56208 Equipment Sold "AS IS, WHERE IS": All equipment/property is sold "AS IS, WHERE IS" with no warranty or guarantees, expressed or implied, No operational assessments or testing have been made by Del Peterson on this item, it has been photographed ONLY.



#199 - Steel Vertical Water Tank (NP5114)

Steel Vertical Water Tank (NP5114), approx. 10' diameter x 23' height, manhole. Notes: This item must be removed by October 8, 2017, NO EXCEPTIONS. Dismantle, removal and transportation is at the expense, risk and liability of the buyer. Proof of insurance must be provided before the dismantle process can begin. Item Location: Raymond, MN 56282 Equipment Sold "AS IS, WHERE IS": All equipment/property is sold "AS IS, WHERE IS" with no warranty or guarantees, expressed or implied, No operational assessments or testing have been made by Del Peterson on this item, it has been photographed ONLY.



#200 - 2001 Palmer Fiberglass Vertical Liquid Tank (NP5115)

2001 Palmer Fiberglass Vertical Liquid Tank (NP5115), Model FWVST, approx. 12' diameter x 25' height, approx. 21,000 gallon capacity, manhole. Notes: This item must be removed by October 8, 2017, NO EXCEPTIONS. Dismantle, removal and transportation is at the expense, risk and liability of the buyer. Proof of insurance must be provided before the dismantle process can begin. Item Location: Raymond, MN 56282 Equipment Sold "AS IS, WHERE IS": All equipment/property is sold "AS IS, WHERE IS" with no warranty or guarantees, expressed or implied, No operational assessments or testing have been made by Del Peterson on this item, it has been photographed ONLY.



#201 - 2001 Palmer Fiberglass Vertical Liquid Tank (NP5116)

2001 Palmer Fiberglass Vertical Liquid Tank (NP5116), Model FWVST, approx. 12' diameter x 25' height, approx. 21,000 gallon capacity, manhole. Notes: This item must be removed by October 8, 2017, NO EXCEPTIONS. Dismantle, removal and transportation is at the expense, risk and liability of the buyer. Proof of insurance must be provided before the dismantle process can begin. Item Location: Raymond, MN 56282 Equipment Sold "AS IS, WHERE IS": All equipment/property is sold "AS IS, WHERE IS" with no warranty or guarantees, expressed or implied, No operational assessments or testing have been made by Del Peterson on this item, it has been photographed ONLY.



#202 - 2001 Palmer Fiberglass Vertical Liquid Tank (NP5117)

2001 Palmer Fiberglass Vertical Liquid Tank (NP5117), Model FWVST, approx. 12' diameter x 25' height, approx. 21,000 gallon capacity, manhole. Notes: This item must be removed by October 8, 2017, NO EXCEPTIONS. Dismantle, removal and transportation is at the expense, risk and liability of the buyer. Proof of insurance must be provided before the dismantle process can begin. Item Location: Raymond, MN 56282 Equipment Sold "AS IS, WHERE IS": All equipment/property is sold "AS IS, WHERE IS" with no warranty or guarantees, expressed or implied, No operational assessments or testing have been made by Del Peterson on this item, it has been photographed ONLY.



#203 - 2001 Palmer Fiberglass Vertical Liquid Tank (NP5118)

2001 Palmer Fiberglass Vertical Liquid Tank (NP5118), Model FWVST, approx. 12' diameter x 25' height, approx. 21,000 gallon capacity, manhole. Notes: This item must be removed by October 8, 2017, NO EXCEPTIONS. Dismantle, removal and transportation is at the expense, risk and liability of the buyer. Proof of insurance must be provided before the dismantle process can begin. Item Location: Raymond, MN 56282 Equipment Sold "AS IS, WHERE IS": All equipment/property is sold "AS IS, WHERE IS" with no warranty or guarantees, expressed or implied, No operational assessments or testing have been made by Del Peterson on this item, it has been photographed ONLY.



#204 - Champion Motor Grader (NP5112)

Champion Motor Grader (NP5112), Cummins Model N-855-C-160 diesel engine, cab, heat, Am/Fm radio, 14.00-24TG tires, 14' moldboard, scarifier, shows 17,800 hours. Notes: This motor grader is being sold as a NON-RUNNER. Item Location: Holloway, MN 56249 Equipment Sold "AS IS, WHERE IS": All equipment/property is sold "AS IS, WHERE IS" with no warranty or guarantees, expressed or implied, No operational assessments or testing have been made by Del Peterson on this item, it has been photographed ONLY.



#205 - 1978 John Deere 4440 Tractor (NP5113)

1978 John Deere 4440 Tractor (NP5113), John Deere diesel engine (S/N 6466TR-03 029106R0), manual transmission, cab, heat, Am/Fm radio, 3 point (upper hitch point missing), PTO, 2 port hydraulics, shows 7,320 hours on original hour meter, shows 1,463 hours on replacement hour meter. Notes: Item Location: Holloway, MN 56249 Equipment Sold "AS IS, WHERE IS": All equipment/property is sold "AS IS, WHERE IS" with no warranty or guarantees, expressed or implied, No operational assessments or testing have been made by Del Peterson on this item, it has been photographed ONLY.



#206 - 2004 Kenworth T2000 Truck (NP5127)

2004 Kenworth T2000 Truck (NP5127), ISX Cummins diesel engine (475HP), FRO 16210C 10 speed transmission, heat, air conditioning, Am/Fm radio, sleeper, tandem axle, 3:70 rear ratio, 24.5 tires, 5th wheel plate, shows 434,019 miles. Notes: Item Location: Coal Valley, IL 61240 Equipment Sold "AS IS, WHERE IS": All equipment/property is sold "AS IS, WHERE IS" with no warranty or guarantees, expressed or implied, No operational assessments or testing have been made by Del Peterson on this item, it has been photographed ONLY.



#207 - Ray Man Loader (PZ6840)

Ray Man Loader (PZ6840), Ray Man floater loader, self contained, Kohler Command Pro 27 gas engine, portable. Notes: Item Location: Harlan, IA 51537 Equipment Sold "AS IS, WHERE IS": All equipment/property is sold "AS IS, WHERE IS" with no warranty or guarantees, expressed or implied, No operational assessments or testing have been made by Del Peterson on this item, it has been photographed ONLY.



#208 - Woods Mower (PZ6839)

Woods Mower (PZ6839), Woods model 306U belly mower. Notes: Item Location: Winterset, IA 50273 Equipment Sold "AS IS, WHERE IS": All equipment/property is sold "AS IS, WHERE IS" with no warranty or guarantees, expressed or implied, No operational assessments or testing have been made by Del Peterson on this item, it has been photographed ONLY.



#209 - 2012 Drago Corn Head (EG275)

2012 Drago Corn Head (EG275), purchased new in August of 2012, head has been used on approximately 7500 acres over five seasons, head comes with three head sight sensors and control box, tall corn shields (green) will also be included, Drago dealer inspection was performed ahead of the 2016 harvest and everything that needed replaced was completed, this includes all new gathering chains and poly guides, this head was ran on a John Deere 9600 combine and has that faceplate on the head. Notes: Item Location: Geneseo, IL 61254 Equipment Sold "AS IS, WHERE IS": All equipment/property is sold "AS IS, WHERE IS" with no warranty or guarantees, expressed or implied, No operational assessments or testing have been made by Del Peterson on this item, it has been photographed ONLY.



#210 - 1995 Ford L8000 Stahly (DR6486)

1995 Ford L8000 Stahly (DR6486), Unit# 323, Cummins diesel engine, 10 speed transmission, 1550 gallon Stahly stainless steel liquid system, 60/80 boom, 60" spacing's, foam markers, stainless steel foam tank, Raven 750 controller, light bar, AM/FM radio, 48X25.00-20 front tires, 66X43.00-25 rear tires, shows 31,421 miles, 3349 hours. Notes: Item Location: Hanska, MN 56041 Equipment Sold "AS IS, WHERE IS": All equipment/property is sold "AS IS, WHERE IS" with no warranty or guarantees, expressed or implied, No operational assessments or testing have been made by Del Peterson on this item, it has been photographed ONLY.



#211 - Farm King 480 Cleaner (DR6497)

Farm King 480 Cleaner (DR6497), portable seed cleaner, electric drive motor, folding auger, single axle cart. Notes: This cleaner has hardly been used at all. Item Location: Hanska, MN 56041 Equipment Sold "AS IS, WHERE IS": All equipment/property is sold "AS IS, WHERE IS" with no warranty or guarantees, expressed or implied, No operational assessments or testing have been made by Del Peterson on this item, it has been photographed ONLY.



#212 - 1986 Ford (DR6487)

1986 Ford (DR6487), gas engine, 5 speed transmission, 2 speed rear end, 10 ton hydraulic dry fertilizer tender box, rear auger, manual flip tarp, AM/FM radio, 10.00-20 tires, shows 70,438 miles. Notes: Item Location: Hanska, MN 56041 Equipment Sold "AS IS, WHERE IS": All equipment/property is sold "AS IS, WHERE IS" with no warranty or guarantees, expressed or implied, No operational assessments or testing have been made by Del Peterson on this item, it has been photographed ONLY.



#213 - 1991 Chevy Kodiak (DR6498)

1991 Chevy Kodiak (DR6498), Cat diesel engine, 6 speed transmission, 4 compartment hydraulic feed body, roll over tarp, air brakes, 11R-22.5 tires, AM/FM radio, air conditioning, shows 54,888 miles. Notes: Item Location: Hanska, MN 56041 Equipment Sold "AS IS, WHERE IS": All equipment/property is sold "AS IS, WHERE IS" with no warranty or guarantees, expressed or implied, No operational assessments or testing have been made by Del Peterson on this item, it has been photographed ONLY.



#214 - Simonsen Tender Box (DR6520)

Simonsen Tender Box (DR6520), Simonsen 16 ton stainless steel hydraulic tender box, rear auger, roll over tarp, includes hydraulic reservoir BUT NO PUMP. Notes: This is BOX ONLY. It will be ready to load. Item Location: Lakefield, MN 56150 Equipment Sold "AS IS, WHERE IS": All equipment/property is sold "AS IS, WHERE IS" with no warranty or guarantees, expressed or implied, No operational assessments or testing have been made by Del Peterson on this item, it has been photographed ONLY.



#215 - Fiberglass Tank (DR6484)

Fiberglass Tank (DR6484), approximately 23,000 gallon upright fiberglass liquid tank, cone bottom, manway access, approximately 33' tall, 11.5' diameter. This is the south tank of the 2. Notes: Dismantle, removal, transportation and liability is the responsibility of the buyer. Tank needs to be removed by Oct 15, 2017. Item Location: Lakefield, MN 56150 Equipment Sold "AS IS, WHERE IS": All equipment/property is sold "AS IS, WHERE IS" with no warranty or guarantees, expressed or implied, No operational assessments or testing have been made by Del Peterson on this item, it has been photographed ONLY.



#216 - Fiberglass Tank (DR6485)

Fiberglass Tank (DR6485), approximately 23,000 gallon upright fiberglass liquid tank, cone bottom, manway access, approximately 33' tall, 11.5' diameter. This is the north tank of the 2. Notes: Dismantle, removal, transportation and liability is the responsibility of the buyer. Tank needs to be removed by Oct 15, 2017. Item Location: Lakefield, MN 56150 Equipment Sold "AS IS, WHERE IS": All equipment/property is sold "AS IS, WHERE IS" with no warranty or guarantees, expressed or implied, No operational assessments or testing have been made by Del Peterson on this item, it has been photographed ONLY.



#217 - 2007 Bodolay C50 Bagging Machine (DL134)

2007 Bodolay C50 Bagging Machine (DL134), Width - 48", Length - 17', Height - 46", Height w/ arm - 75", less than 50 hours, used for pasta. Notes: Item Location: Effingham, IL 62401 Equipment Sold "AS IS, WHERE IS": All equipment/property is sold "AS IS, WHERE IS" with no warranty or guarantees, expressed or implied, No operational assessments or testing have been made by Del Peterson on this item, it has been photographed ONLY.



#218 - Incline Elevator Plastic Chain Conveyor, (DL135)

Incline Elevator Plastic Chain Conveyor, (DL135), Approximately 23' end to end, works great! Notes: Item Location: Effingham, IL 62401 Equipment Sold "AS IS, WHERE IS": All equipment/property is sold "AS IS, WHERE IS" with no warranty or guarantees, expressed or implied, No operational assessments or testing have been made by Del Peterson on this item, it has been photographed ONLY.



#219 - Yetter Row Units (PZ6608)

Yetter Row Units (PZ6608), 20 - Yetter 2987 Magnum NH3 high speed row units with 15 - Yetter skid shoes. Notes: Item Location: Roland, IA 50236 Equipment Sold "AS IS, WHERE IS": All equipment/property is sold "AS IS, WHERE IS" with no warranty or guarantees, expressed or implied, No operational assessments or testing have been made by Del Peterson on this item, it has been photographed ONLY.



#220 - Parker Weigh Wagon (CG324)

Parker Weigh Wagon (CG324), works good, fully functional. Notes: Item Location: Shiocton, WI 54170 Equipment Sold "AS IS, WHERE IS": All equipment/property is sold "AS IS, WHERE IS" with no warranty or guarantees, expressed or implied, No operational assessments or testing have been made by Del Peterson on this item, it has been photographed ONLY.



#221 - Hobart Welder

Hobart Welder, Model Beta Mig 200. Notes: Seller will place on a pallet and ship to buyer anywhere in the US at the BUYER'S EXPENSE. Item Location: Rantoul, IL 61866 Equipment Sold "AS IS, WHERE IS": All equipment/property is sold "AS IS, WHERE IS" with no warranty or guarantees, expressed or implied, No operational assessments or testing have been made by Del Peterson on this item, it has been photographed ONLY.



#222 - Miller Stick Welder

Miller Stick Welder, Thunder Bolt, 225 volt, AC Shielded Metal - ARC Welding Machine. Notes: Seller will place on a pallet and ship to buyer anywhere in the US at the BUYER'S EXPENSE. Item Location: Rantoul, IL 61866 Equipment Sold "AS IS, WHERE IS": All equipment/property is sold "AS IS, WHERE IS" with no warranty or guarantees, expressed or implied, No operational assessments or testing have been made by Del Peterson on this item, it has been photographed ONLY.



#223 - Liquid Tank (PZ6662)

Liquid Tank (PZ6662), 2000 gallon stainless steel liquid tank, 120" x 72", stands. Notes: Item Location: Greene, IA 50636 Equipment Sold "AS IS, WHERE IS": All equipment/property is sold "AS IS, WHERE IS" with no warranty or guarantees, expressed or implied, No operational assessments or testing have been made by Del Peterson on this item, it has been photographed ONLY.



#224 - Liquid Tank (PZ6663)

Liquid Tank (PZ6663), 3500 gallon stainless steel liquid tank, 120" x 96", stands. Notes: Item Location: Greene, IA 50636 Equipment Sold "AS IS, WHERE IS": All equipment/property is sold "AS IS, WHERE IS" with no warranty or guarantees, expressed or implied, No operational assessments or testing have been made by Del Peterson on this item, it has been photographed ONLY.



#225 - Liquid Tank (PZ6664)

Liquid Tank (PZ6664), Friesen 2500 gallon stainless steel liquid tank, 144" x 72", stainless steel stands. Notes: Item Location: Greene, IA 50636 Equipment Sold "AS IS, WHERE IS": All equipment/property is sold "AS IS, WHERE IS" with no warranty or guarantees, expressed or implied, No operational assessments or testing have been made by Del Peterson on this item, it has been photographed ONLY.



#226 - Liquid Tank (PZ6665)

Liquid Tank (PZ6665), Friesen 2000 gallon stainless steel liquid tank, 120" x 72", stainless steel stands. Notes: Item Location: Greene, IA 50636 Equipment Sold "AS IS, WHERE IS": All equipment/property is sold "AS IS, WHERE IS" with no warranty or guarantees, expressed or implied, No operational assessments or testing have been made by Del Peterson on this item, it has been photographed ONLY.



#227 - Liquid Tank (PZ6666)

Liquid Tank (PZ6666), Meridian 3000 gallon stainless steel liquid tank, 96" x 96", stainless steel stands. Notes: Item Location: Greene, IA 50636 Equipment Sold "AS IS, WHERE IS": All equipment/property is sold "AS IS, WHERE IS" with no warranty or guarantees, expressed or implied, No operational assessments or testing have been made by Del Peterson on this item, it has been photographed ONLY.



#228 - DRAMM Heavy Duty Sprayer (NP5084)

DRAMM Heavy Duty Sprayer (NP5084), Model MSO, portable, hose reel, 15x6.00-6. Notes: Item Location: Wichita, KS 67204 Equipment Sold "AS IS, WHERE IS": All equipment/property is sold "AS IS, WHERE IS" with no warranty or guarantees, expressed or implied, No operational assessments or testing have been made by Del Peterson on this item, it has been photographed ONLY.



#229 - Stainless Steel Wash Table (NP5085)

Stainless Steel Wash Table (NP5085), 3' x 8' stainless steel wash table with sink, no facet or plumbing. Notes: Item Location: Wichita, KS 67204 Equipment Sold "AS IS, WHERE IS": All equipment/property is sold "AS IS, WHERE IS" with no warranty or guarantees, expressed or implied, No operational assessments or testing have been made by Del Peterson on this item, it has been photographed ONLY.



#230 - (50) Shelf Printing Racks On Wheels (NP5086)

(50) Shelf Printing Racks On Wheels (NP5086) Notes: Item Location: Wichita, KS 67204 Equipment Sold "AS IS, WHERE IS": All equipment/property is sold "AS IS, WHERE IS" with no warranty or guarantees, expressed or implied, No operational assessments or testing have been made by Del Peterson on this item, it has been photographed ONLY.



#231 - Soaker Fabric (NP5087)

Soaker Fabric (NP5087), (16) rolls, 5' wide. Notes: Item Location: Wichita, KS 67204 Equipment Sold "AS IS, WHERE IS": All equipment/property is sold "AS IS, WHERE IS" with no warranty or guarantees, expressed or implied, No operational assessments or testing have been made by Del Peterson on this item, it has been photographed ONLY.



#232 - Various Greenhouse Irrigation Supplies (NP5088)

Various Greenhouse Irrigation Supplies (NP5088), (25) Powe Lock T's, (1250) Drippers, (50) 13mm shut-off valves, (48) 1/4" x 40' soaker hose, (1500) drippers for pots. Notes: Item Location: Wichita, KS 67204 Equipment Sold "AS IS, WHERE IS": All equipment/property is sold "AS IS, WHERE IS" with no warranty or guarantees, expressed or implied, No operational assessments or testing have been made by Del Peterson on this item, it has been photographed ONLY.



#233 - Agriculx SCS-2 Corn Sheller (NP5082)

Agriculx SCS-2 Corn Sheller (NP5082), single ear sheller/pneumatic seed delivery, 120V, 10.8A, 60 HZ, Leeson single phase 3/4HP electric motor, shelling pressure control, air pressure foot control. Notes: Item Location: Wichita, KS 67204 Equipment Sold "AS IS, WHERE IS": All equipment/property is sold "AS IS, WHERE IS" with no warranty or guarantees, expressed or implied, No operational assessments or testing have been made by Del Peterson on this item, it has been photographed ONLY.



#234 - Sortex 3000 Series Color Sorter (NP5083)

Sortex 3000 Series Color Sorter (NP5083), Model 3201, 115 volts, 60HZ, single phase, Observview, Syntron Magnetic Feeder (110 Volts, 60 Hz, .9 AMP). Notes: Item Location: Wichita, KS 67204 Equipment Sold "AS IS, WHERE IS": All equipment/property is sold "AS IS, WHERE IS" with no warranty or guarantees, expressed or implied, No operational assessments or testing have been made by Del Peterson on this item, it has been photographed ONLY.



#235 - 1989 Blin Trailer (NP5076)

1989 Blin Trailer (NP5076), approx. 82" wide x 16' long, tandem axle, bumper hitch, wood deck, approx. 6' fold down ramps, ST225/75R15 tires, (spare tire). Notes: Item Location: Wichita, KS 67204 Equipment Sold "AS IS, WHERE IS": All equipment/property is sold "AS IS, WHERE IS" with no warranty or guarantees, expressed or implied, No operational assessments or testing have been made by Del Peterson on this item, it has been photographed ONLY.



#236 - Rubbermaid Shelling Tubs (NP5074)

Rubbermaid Shelling Tubs (NP5074), approx. 180 shelling tubs, 18" x 12.75" x 4.5", plastic with handles. Notes: Item Location: Wichita, KS 67204 Equipment Sold "AS IS, WHERE IS": All equipment/property is sold "AS IS, WHERE IS" with no warranty or guarantees, expressed or implied, No operational assessments or testing have been made by Del Peterson on this item, it has been photographed ONLY.



#237 - 1990 Cryogenic Services, Inc. Nitrogen Tank (NP5080)

1990 Cryogenic Services, Inc. Nitrogen Tank (NP5080), D.O.T. 4L100, PLC - 180 LP, T.W. 228. Notes: Item Location: Wichita, KS 67204 Equipment Sold "AS IS, WHERE IS": All equipment/property is sold "AS IS, WHERE IS" with no warranty or guarantees, expressed or implied, No operational assessments or testing have been made by Del Peterson on this item, it has been photographed ONLY.



#238 - UWS Pickup Tool Box (NP5089)

UWS Pickup Tool Box (NP5089). Notes: Item Location: Wichita, KS 67204 Equipment Sold "AS IS, WHERE IS": All equipment/property is sold "AS IS, WHERE IS" with no warranty or guarantees, expressed or implied, No operational assessments or testing have been made by Del Peterson on this item, it has been photographed ONLY.



#239 - 2010 McFarlane Reel Disk Model #RD-4030-RB6 (PD430)

2010 McFarlane Reel Disk Model #RD-4030-RB6 (PD430), 30 Foot Reel Disk, blades show 18 3/4 Inches, stored inside. Notes: Item Location: Bunceton, MO 65237 Equipment Sold "AS IS, WHERE IS": All equipment/property is sold "AS IS, WHERE IS" with no warranty or guarantees, expressed or implied, No operational assessments or testing have been made by Del Peterson on this item, it has been photographed ONLY.



#240 - 2010 John Deere 8270R Tractor (EG261)

2010 John Deere 8270R Tractor (EG261), Greenstar ready, 38 inch front duals, 50 inch rear, 4 hydraulics, front weights, approximately 1508 hours, 2nd owner, owned since 200 hours, super sharp, Globe and monitor NOT INCLUDED. Notes: Globe and monitor NOT INCLUDED. Item Location: West Union, IL 62477 Equipment Sold "AS IS, WHERE IS": All equipment/property is sold "AS IS, WHERE IS" with no warranty or guarantees, expressed or implied, No operational assessments or testing have been made by Del Peterson on this item, it has been photographed ONLY.



#241 - SFI Superior Implements Box Blade (NP5128)

SFI Superior Implements Box Blade (NP5128), Model HC10-Y, 10' high capacity drag blade, swivel clevis hitch, non-tilt, Bolton weight box, hydraulic lift. Notes: NEW, NEVER USED. Item Location: Oakland, NE 68045 Equipment Sold "AS IS, WHERE IS": All equipment/property is sold "AS IS, WHERE IS" with no warranty or guarantees, expressed or implied, No operational assessments or testing have been made by Del Peterson on this item, it has been photographed ONLY.



#242 - 1997 Transcraft Flabed Trailer (NP5138)

1997 Transcraft Flabed Trailer (NP5138), 1997 Transcraft Model TL-2000 flatbed trailer, 45' X 96", tandem axle, air ride suspension, 11R22.5 tires. Notes: SALVAGE TITLE. This trailer was in a wreck and will not be able to be pulled. Item Location: Lyons, SD 57041 Equipment Sold "AS IS, WHERE IS": All equipment/property is sold "AS IS, WHERE IS" with no warranty or guarantees, expressed or implied, No operational assessments or testing have been made by Del Peterson on this item, it has been photographed ONLY.



#243 - 2006 Freightliner Columbia CL120 Truck (NP5137)

2006 Freightliner Columbia CL120 Truck (NP5137), Detroit Series 60 diesel engine, 10 speed transmission, air conditioning heat, Am/Fm radio, tandem axle, full screw, air ride suspension, 5th wheel, 295/75R22.5 tires. Notes: SALVAGE TITLE. This truck has been in a wreck and is inoperable. Item Location: Lyons, SD 57041 Equipment Sold "AS IS, WHERE IS": All equipment/property is sold "AS IS, WHERE IS" with no warranty or guarantees, expressed or implied, No operational assessments or testing have been made by Del Peterson on this item, it has been photographed ONLY.



#244 - 2004 Bobcat S250 Skid Steer (NP5137)

2004 Bobcat S250 Skid Steer (NP5137), 4x4, Kubota gas engine, powershift transmission, cab, heat, air conditioning, Am/Fm radio, hand/foot controls, bucket, solid tire. Notes: SALVAGED UNIT, unit caught fire. Please contact seller for more details. Item Location: Currie, MN 56123 Equipment Sold "AS IS, WHERE IS": All equipment/property is sold "AS IS, WHERE IS" with no warranty or guarantees, expressed or implied, No operational assessments or testing have been made by Del Peterson on this item, it has been photographed ONLY.



#245 - 2007 International 4300, Unit# 2480 (DR 6699)

2007 International 4300, Unit# 2480 (DR6699), DT 466 diesel engine, manual transmission, single axle w/ air lift tag, air ride suspension, air brakes, air brakes, 5 compartment fuel delivery body, dual metered reels, cab controls with ticket printer, AM/FM radio, AC, Heat, cruise control, 22.5 tires, bulk fuel delivery truck, 224,769 miles. Notes: Item Location: Cobb, WI 53526 Equipment Sold "AS IS, WHERE IS": All equipment/property is sold "AS IS, WHERE IS" with no warranty or guarantees, expressed or implied, No operational assessments or testing have been made by Del Peterson on this item, it has been photographed ONLY.



#246 - Single Vending Machine (EG280)

Single Vending Machine (EG280), candy vending machine, everything works. Notes: Item Location: Sioux City, IA 51106 Equipment Sold "AS IS, WHERE IS": All equipment/property is sold "AS IS, WHERE IS" with no warranty or guarantees, expressed or implied, No operational assessments or testing have been made by Del Peterson on this item, it has been photographed ONLY.



#247 - 2012 Freightliner Coronado 122 (JMK 159)

2012 Freightliner Coronado 122 (JMK 159), Detroit DD-15, 505 HP, Eaton autoshift, automatic transmission, 10 aluminum wheels, all brand new virgin tires, brakes are all new within the last 10,000 miles, 2-70 Gal fuel tanks, 210" wheelbase, Jake brake, dual exhaust, CB radio, am/fm/cd radio, heat and AC, power windows, power seats, power mirrors, shows 410,000 miles. Notes: Item Location: Mazon, IL 60444 Equipment Sold "AS IS, WHERE IS": All equipment/property is sold "AS IS, WHERE IS" with no warranty or guarantees, expressed or implied, No operational assessments or testing have been made by Del Peterson on this item, it has been photographed ONLY.



#248 - 2004 Hi Qual Engineered Hoop Building (PD429)

2004 Hi Qual Engineered Hoop Building (PD429), 60 Foot x 192 Foot, painted steel structure, 12 foot spacing on rafters, 24 foot opening on one side with a 14 Foot X 13 Foot canvas door, was built for manure storage but has been used for fertilizer storage for several years, wooden end wall is NOT included or wood partition wall down the middle. Notes: Center partition wall not included. Building will be disassembled by September 1, 2017 and available for pickup. Dates subject to change based on Buyer and Seller agreement. Item Location: Kensett, IA 50448 Equipment Sold "AS IS, WHERE IS": All equipment/property is sold "AS IS, WHERE IS" with no warranty or guarantees, expressed or implied, No operational assessments or testing have been made by Del Peterson on this item, it has been photographed ONLY.



#249 - Peerless Double Pair Roller Mill Model 20095 (PD333)

Peerless Double Pair Roller Mill Model 20095 (PD333) Notes: Item Location: Hulbert, OK 74441 Equipment Sold "AS IS, WHERE IS": All equipment/property is sold "AS IS, WHERE IS" with no warranty or guarantees, expressed or implied, No operational assessments or testing have been made by Del Peterson on this item, it has been photographed ONLY.



#250 - Roskamp Double Pair Roller Mill Model K6904 (PD334)

Roskamp Double Pair Roller Mill Model K6904 (PD334) Notes: Item Location: Hulbert, OK 74441 Equipment Sold "AS IS, WHERE IS": All equipment/property is sold "AS IS, WHERE IS" with no warranty or guarantees, expressed or implied, No operational assessments or testing have been made by Del Peterson on this item, it has been photographed ONLY.



#251 - 1991 CEI Pacer Bag/Bulk Combo Aluminum Feed Auger Trailer (PD432)

1991 CEI Pacer Bag/Bulk Combo Aluminum Feed Auger Trailer (PD432), 42 Foot X 96 Inches, 30 Foot Auger, super single tires with spare rack, 2 tires excellent tread, 2 tires with ok tread, top doors, 3 bulk heads so you can divide bulk loads in to 4 compartments of variable size, drop down slope plates for bulk, rear door hinges have been rewelded, under carriage has been completely rebuilt 100,000 miles ago (\$13,501 parts and labor), remote control for controlling discharge augers comes with unit, but needs work. Notes: Item Location: Oskaloosa, IA 52577 Equipment Sold "AS IS, WHERE IS": All equipment/property is sold "AS IS, WHERE IS" with no warranty or guarantees, expressed or implied, No operational assessments or testing have been made by Del Peterson on this item, it has been photographed ONLY.



#252 - John Deere 567 Round Baler (MH206)

John Deere 567 Round Baler (MH206), 1000 PTO hydraulic pickup lift, bale kicker twine tie only, new PTO shaft and clutch, new chains, good shape, greased and field ready. Notes: Went through JD shop 2000 bales ago, new PTO and clutch then. Item Location: Howard, SD 57349 Equipment Sold "AS IS, WHERE IS": All equipment/property is sold "AS IS, WHERE IS" with no warranty or guarantees, expressed or implied, No operational assessments or testing have been made by Del Peterson on this item, it has been photographed ONLY.



#253 - 2008 Case IH 730C ET 3007 Disk Ripper (EG282)

2008 Case IH 730C ET 3007 Disk Ripper (EG282), bought new in 2008, reason for selling is upgraded to bigger one. Notes: Item Location: Fairbank, IA 50629 Equipment Sold "AS IS, WHERE IS": All equipment/property is sold "AS IS, WHERE IS" with no warranty or guarantees, expressed or implied, No operational assessments or testing have been made by Del Peterson on this item, it has been photographed ONLY.



#255 - 2005 Felling Trailer Unit #86 (DR6757)

2005 Felling Trailer Unit #86 (DR6757), tandem axle sprayer trailer, rear fold down ramps, 215/75R17.5 tires. Notes: Item Location: Antigo, WI 54409 Equipment Sold "AS IS, WHERE IS": All equipment/property is sold "AS IS, WHERE IS" with no warranty or guarantees, expressed or implied, No operational assessments or testing have been made by Del Peterson on this item, it has been photographed ONLY.



#256 - 2003 Kenworth Unit# 277 (DR6782)

2003 Kenworth Unit# 277 (DR6782), Cummins Diesel engine, 10-speed transmission, single axle, air brakes, 2700 gallon 5-compartment bulk fuel delivery body, dual metered hose reels, cab controls, am/fm radio, air conditioning. Notes: Item Location: Ishpeming, MI 49849 Equipment Sold "AS IS, WHERE IS": All equipment/property is sold "AS IS, WHERE IS" with no warranty or guarantees, expressed or implied, No operational assessments or testing have been made by Del Peterson on this item, it has been photographed ONLY.



#257 - 2007 Freightliner Unit# 279 (DR6755)

2007 Freightliner Unit# 279 (DR6755), bulk fuel delivery truck, Mercedes diesel engine, 6 speed transmission, engine brake, air brakes, single axle, Progress 2300 gallon 5 compartment fuel body, dual metered hose reels, cab controls and printer, cruise control, shows 149,164 miles, 22.5 tires. Notes: Item Location: Green Bay, WI 54311 Equipment Sold "AS IS, WHERE IS": All equipment/property is sold "AS IS, WHERE IS" with no warranty or guarantees, expressed or implied, No operational assessments or testing have been made by Del Peterson on this item, it has been photographed ONLY.



#258 - 1998 International 4700, Unit #34084 (DR6700)

1998 International 4700, Unit #34084 (DR6700), DT 466 diesel, 6 speed transmission, single axle, air brakes, 1997 Kleepee 3000 gal LP delivery tank, magnetic float gauge, NO PUMP or meter, AM/FM radio, AC, Heat, cruise control, 22.5 tires, 220,900 miles, bulk LP delivery truck. Notes: Truck has a broken idler pulley for serpentine belt, it will overheat when you drive it away, it runs and starts just fine, contact seller for more details. Item Location: Darlington, WI 53530 Equipment Sold "AS IS, WHERE IS": All equipment/property is sold "AS IS, WHERE IS" with no warranty or guarantees, expressed or implied, No operational assessments or testing have been made by Del Peterson on this item, it has been photographed ONLY.



#259 - 2004 Kenworth Unit# 2033 (DR6732)

2004 Kenworth Unit# 2033 (DR6732), bulk fuel delivery truck, Cat diesel engine, 6 speed transmission, single axle w/ air lift tag axle, air ride suspension, air brakes, Progress 5 compartment 2700 gal fuel body, dual metered hose reels, cab controls and printer, frame mounted storage boxes, AM/FM radio, cruise control, 11R22.5 tires, 301,876 miles. Notes: Item Location: Jefferson, WI 53549 Equipment Sold "AS IS, WHERE IS": All equipment/property is sold "AS IS, WHERE IS" with no warranty or guarantees, expressed or implied, No operational assessments or testing have been made by Del Peterson on this item, it has been photographed ONLY.



#260 - 1998 Freightliner FL70, Unit# 606 (DR6760)

1998 Freightliner FL70, Unit# 606 (DR6760), bulk fuel delivery truck, Cat diesel engine, 7 speed transmission, single axle w/ air lift tag, air ride suspension, air brakes, Progress 5 compartment 2700 gal fuel body, dual metered hose reels, cruise control, 22.5 tires, 370,436 miles. Notes: CLUTCH IS OUT. Item Location: Sparta, WI 54656 Equipment Sold "AS IS, WHERE IS": All equipment/property is sold "AS IS, WHERE IS" with no warranty or guarantees, expressed or implied, No operational assessments or testing have been made by Del Peterson on this item, it has been photographed ONLY.



#261 - 1959 Fruehauf Flatbed Trailer (EG276)

1959 Fruehauf Flatbed Trailer (EG276), 24 foot, 22.5 rubber, decent deck, (2) 750 gallon water tanks, (1) 250 gallon product tank. Notes: Item Location: Carroll, IA 51401 Equipment Sold "AS IS, WHERE IS": All equipment/property is sold "AS IS, WHERE IS" with no warranty or guarantees, expressed or implied, No operational assessments or testing have been made by Del Peterson on this item, it has been photographed ONLY.



#262 - Aluminum Side Boxes (NP5140)

Aluminum Side Boxes (NP5140), (2) 18" aluminum side boxes, good condition, sells as a pair, NO KEYS to these boxes. Notes: Item Location: Coal Valley, IL 61240 Equipment Sold "AS IS, WHERE IS": All equipment/property is sold "AS IS, WHERE IS" with no warranty or guarantees, expressed or implied, No operational assessments or testing have been made by Del Peterson on this item, it has been photographed ONLY.



#263 - Ranger 3" Pump (NP5024)

Ranger 3" Pump (NP5024), PTO shaft, plumbing all included, PTO fits 10 speed transmission. Notes: Item Location: Coal Valley, IL 61240 Equipment Sold "AS IS, WHERE IS": All equipment/property is sold "AS IS, WHERE IS" with no warranty or guarantees, expressed or implied, No operational assessments or testing have been made by Del Peterson on this item, it has been photographed ONLY.



#264 - New Leader L3020 G4 Dry Box (NP5141)

New Leader L3020 G4 Dry Box (NP5141), stainless steel, 12.5' bed, pump included, hydraulic, dual spinners, running gear NOT INCLUDED. Notes: Item Location: Jewell, IA 50130 Equipment Sold "AS IS, WHERE IS": All equipment/property is sold "AS IS, WHERE IS" with no warranty or guarantees, expressed or implied, No operational assessments or testing have been made by Del Peterson on this item, it has been photographed ONLY.



#266 - 1998 Entwistle MB-4 Aircraft Tug (CG308)

1998 Entwistle MB-4 Aircraft Tug (CG308), 4x4, all wheel steer, 5.9 Cummins engine, automatic transmission, air ride, 1200 hours. Notes: Item Location: Jewell, IA 50130 Equipment Sold "AS IS, WHERE IS": All equipment/property is sold "AS IS, WHERE IS" with no warranty or guarantees, expressed or implied, No operational assessments or testing have been made by Del Peterson on this item, it has been photographed ONLY.



#267 - 20,000 Gallon Steel Tank (PD417)

20,000 Gallon Steel Tank (PD417), 2-3 inch valves, 1 inch sight tube, manhole. Notes: This item must be removed by October 1, 2017 with NO EXCEPTIONS. Dismantle, removal and transportation is at the expense, risk and liability of the buyer. Item Location: Mount Pleasant, IA 52641 Equipment Sold "AS IS, WHERE IS": All equipment/property is sold "AS IS, WHERE IS" with no warranty or guarantees, expressed or implied, No operational assessments or testing have been made by Del Peterson on this item, it has been photographed ONLY.



#268 - 12,000 Gallon Steel Tank (PD416)

12,000 Gallon Steel Tank (PD416), 1-3 inch valve, 1 inch sight tube, manhole. Notes: This item must be removed by October 1, 2017 with NO EXCEPTIONS. Dismantle, removal and transportation is at the expense, risk and liability of the buyer. Item Location: Mount Pleasant, IA 52641 Equipment Sold "AS IS, WHERE IS": All equipment/property is sold "AS IS, WHERE IS" with no warranty or guarantees, expressed or implied, No operational assessments or testing have been made by Del Peterson on this item, it has been photographed ONLY.



#269 - 19,000 Gallon Steel Tank (PD415)

19,000 Gallon Steel Tank (PD415), 2-3 inch valves, 1 inch sight tube, manhole. Notes: This item must be removed by October 1, 2017 with NO EXCEPTIONS. Dismantle, removal and transportation is at the expense, risk and liability of the buyer. Item Location: Mount Pleasant, IA 52641 Equipment Sold "AS IS, WHERE IS": All equipment/property is sold "AS IS, WHERE IS" with no warranty or guarantees, expressed or implied, No operational assessments or testing have been made by Del Peterson on this item, it has been photographed ONLY.



#270 - 19,000 Gallon Steel Tank (PD414)

19,000 Gallon Steel Tank (PD414), 2-3 inch valves, 1 inch sight tube, manhole, ladder with cage. Notes: This item must be removed by October 1, 2017 with NO EXCEPTIONS. Dismantle, removal and transportation is at the expense, risk and liability of the buyer. Item Location: Mount Pleasant, IA 52641 Equipment Sold "AS IS, WHERE IS": All equipment/property is sold "AS IS, WHERE IS" with no warranty or guarantees, expressed or implied, No operational assessments or testing have been made by Del Peterson on this item, it has been photographed ONLY.



#271 - 19,000 Gallon Steel Tank (PD410)

19,000 Gallon Steel Tank (PD410), 2-3 inch valves, 1 inch sight tube, manhole. Notes: This item must be removed by October 1, 2017 with NO EXCEPTIONS. Dismantle, removal and transportation is at the expense, risk and liability of the buyer. Item Location: Mount Pleasant, IA 52641 Equipment Sold "AS IS, WHERE IS": All equipment/property is sold "AS IS, WHERE IS" with no warranty or guarantees, expressed or implied, No operational assessments or testing have been made by Del Peterson on this item, it has been photographed ONLY.



#272 - 10,000 Gallon Steel Tank (PD407)

10,000 Gallon Steel Tank (PD407). Notes: This item must be removed by October 1, 2017 with NO EXCEPTIONS. Dismantle, removal and transportation is at the expense, risk and liability of the buyer. Item Location: Mount Pleasant, IA 52641 Equipment Sold "AS IS, WHERE IS": All equipment/property is sold "AS IS, WHERE IS" with no warranty or guarantees, expressed or implied, No operational assessments or testing have been made by Del Peterson on this item, it has been photographed ONLY.



#273 - 300 Feet Of 3 Inch Hoses & Distributor (PD409)

300 Feet Of 3 Inch Hoses & Distributor (PD409), various lengths of 20 to 50 feet long. Notes: Item Location: Mount Pleasant, IA 52641 Equipment Sold "AS IS, WHERE IS": All equipment/property is sold "AS IS, WHERE IS" with no warranty or guarantees, expressed or implied, No operational assessments or testing have been made by Del Peterson on this item, it has been photographed ONLY.



#274 - John Blue Pump W/ 11HP Honda Motor (PD418)

John Blue Pump W/ 11HP Honda Motor (PD418), used for railcars. Notes: Item Location: Washington, IA 52353 Equipment Sold "AS IS, WHERE IS": All equipment/property is sold "AS IS, WHERE IS" with no warranty or guarantees, expressed or implied, No operational assessments or testing have been made by Del Peterson on this item, it has been photographed ONLY.



#275 - 2013 Wilson Hopper (DR6481)

2013 Wilson Hopper (DR6481), model DWH5000, 42' aluminum hopper, tandem axle, air ride suspension, ag hoppers, Shurco electric roll over tarp w/remotes, all aluminum Budd wheels. Notes: This trailer literally has less than 25,000 miles. Item Location: Wells, MN 56097 Equipment Sold "AS IS, WHERE IS": All equipment/property is sold "AS IS, WHERE IS" with no warranty or guarantees, expressed or implied, No operational assessments or testing have been made by Del Peterson on this item, it has been photographed ONLY.



#276 - 2005 Volvo Truck (DR6480)

2005 Volvo Truck (DR6480), Cummins ISX diesel engine, 10 speed transmission, engine brake, tandem axle full screw, 3:58 gears, air ride suspension, walk-in sleeper, dual aluminum fuel tanks, aluminum half fenders, air slide 5ht wheel plate, AM/FM CD radio, air conditioning, power windows & locks, air dump valve, shows 696,316 miles. Notes: Item Location: Wells, MN 56097 Equipment Sold "AS IS, WHERE IS": All equipment/property is sold "AS IS, WHERE IS" with no warranty or guarantees, expressed or implied, No operational assessments or testing have been made by Del Peterson on this item, it has been photographed ONLY.



#277 - 1990 Freightliner FLD120 (DR6489)

1990 Freightliner FLD120 (DR6489), Cat diesel engine, 13 speed transmissison, engine brake, day cab, tandem axle full screw, air ride suspension, chrome front bumper, dual chrome stacks, dual aluminum fuel tanks, 17' of frame rail behind the cab, 24.5 tires, outside aluminum rims, air conditioning. Notes: Item Location: Hanska, MN 56041 Equipment Sold "AS IS, WHERE IS": All equipment/property is sold "AS IS, WHERE IS" with no warranty or guarantees, expressed or implied, No operational assessments or testing have been made by Del Peterson on this item, it has been photographed ONLY.



#278 - Melroe 202 Drill (DR6496)

Melroe 202 Drill (DR6496), model 2101-286 13' pull type drill, 7" spacing's, dual bins, rear press wheels. Notes: Item Location: Hanska, MN 56041 Equipment Sold "AS IS, WHERE IS": All equipment/property is sold "AS IS, WHERE IS" with no warranty or guarantees, expressed or implied, No operational assessments or testing have been made by Del Peterson on this item, it has been photographed ONLY.



#279 - Case 60XT (DR6495)

Case 60XT (DR6495), diesel engine, hydrostatic drive, cab w/hear, auxiliary hydraulic outlets, front quick tach, shows 1561 hours, 12-16.5 hours. Notes: Item Location: Hanska, MN 56041 Equipment Sold "AS IS, WHERE IS": All equipment/property is sold "AS IS, WHERE IS" with no warranty or guarantees, expressed or implied, No operational assessments or testing have been made by Del Peterson on this item, it has been photographed ONLY.



#280 - Case IH 9270 (DR6494)

Case IH 9270 (DR6494), 4X4 articulated tractor, Cummins diesel engine, hi/lo power shift transmission, 4 hydraulic outlets, cab heat/air conditioning, AM/FM radio, 650/65R45 excellent tires, shows 5952 hours. Notes: Item Location: Hanska, MN 56041 Equipment Sold "AS IS, WHERE IS": All equipment/property is sold "AS IS, WHERE IS" with no warranty or guarantees, expressed or implied, No operational assessments or testing have been made by Del Peterson on this item, it has been photographed ONLY.



#281 - 2011 International Pro Star (DR6488)

2011 International Pro Star (DR6488), Max Force diesel engine, 13 speed transmission, engine brake, tandem axle full screw, air ride suspension, air ride front axle, dual aluminum fuel tanks, day cab, stainless steel quarter fenders, air slide 5th wheel, 6 way air seat, AM/FM CD radio, air conditioning, cruise control, 22.5 tires, all aluminum wheels, 5828 ACTUAL miles. Notes: Item Location: Hanska, MN 56041 Equipment Sold "AS IS, WHERE IS": All equipment/property is sold "AS IS, WHERE IS" with no warranty or guarantees, expressed or implied, No operational assessments or testing have been made by Del Peterson on this item, it has been photographed ONLY.



#282 - 1991 Marmon (DR6490)

1991 Marmon (DR6490), Cat diesel engine, 13 speed transmission, day cab, tandem axle full screw, air ride suspension, dual aluminum fuel tanks, air slide 5th wheel, 22.5 tires, AM/FM cassette radio, shows 641,941 miles believed to be actual. Notes: Item Location: Hanska, MN 56041 Equipment Sold "AS IS, WHERE IS": All equipment/property is sold "AS IS, WHERE IS" with no warranty or guarantees, expressed or implied, No operational assessments or testing have been made by Del Peterson on this item, it has been photographed ONLY.



#284 - 2004 Ford F350 (DR6491)

2004 Ford F350 (DR6491), Power Stroke diesel engine, automatic transmission, 4X4, rear receiver hitch, mated topper with side access doors, rear walk in doors, front mount Boss V plow, AM/FM radio, air conditioning, cruise control, 235/85R16 tires, shows 94,919 miles. Notes: Item Location: Hanska, MN 56041 Equipment Sold "AS IS, WHERE IS": All equipment/property is sold "AS IS, WHERE IS" with no warranty or guarantees, expressed or implied, No operational assessments or testing have been made by Del Peterson on this item, it has been photographed ONLY.



#286 - 2000 Freightliner Conventional FLD120 (EG278)

2000 Freightliner Conventional FLD120 (EG278), Cummins N14 diesel engine, 10 speed transmission, air ride suspension, wet kit, tires 11R22.5, new steers tires and three axle alignment on 5/30/17, truck has had regular maintenance, has air conditioning but currently not working, truck has had regular maintenance, shows 967,703 miles. Notes: Item Location: Logansport, IN 46947 Equipment Sold "AS IS, WHERE IS": All equipment/property is sold "AS IS, WHERE IS" with no warranty or guarantees, expressed or implied, No operational assessments or testing have been made by Del Peterson on this item, it has been photographed ONLY.



#287 - KSI Conveyor (DR6671)

KSI Conveyor (DR6671), model 1208-60, portable tube conveyor, bottom drive 10hp electric motor, manual up/down. Notes: Item Location: South Sioux City, NE 68776 Equipment Sold "AS IS, WHERE IS": All equipment/property is sold "AS IS, WHERE IS" with no warranty or guarantees, expressed or implied, No operational assessments or testing have been made by Del Peterson on this item, it has been photographed ONLY.



#288 - Ag Systems AG6200 Unit# 90344 (DR6635)

Ag Systems AG6200 Unit# 90344 (DR6635), liquid applicator, 15 coulter injectors, 700 gallon poly liquid tank, ground drive liquid pump, 16.5L-16.1 tires. Notes: Item Location: South Sioux City, NE 68776 Equipment Sold "AS IS, WHERE IS": All equipment/property is sold "AS IS, WHERE IS" with no warranty or guarantees, expressed or implied, No operational assessments or testing have been made by Del Peterson on this item, it has been photographed ONLY.



#289 - Ag Systems AG6200 Unit# 90343 (DR6636)

Ag Systems AG6200 Unit# 90343 (DR6636), liquid applicator, 15 coulter injectors, 900 gallon poly liquid tank, ground drive liquid pump, 385/65R22.5 tires. Notes: Item Location: South Sioux City, NE 68776 Equipment Sold "AS IS, WHERE IS": All equipment/property is sold "AS IS, WHERE IS" with no warranty or guarantees, expressed or implied, No operational assessments or testing have been made by Del Peterson on this item, it has been photographed ONLY.



#290 - Farmall Super C (DR6633)

Farmall Super C (DR6633), NON RUNNER, gas engine, 4 speed manual transmission, narrow front end, 60" belly mounted mower. Notes: Tractor has been sitting for some time. There is NO BATTERY in tractor. Item Location: South Sioux City, NE 68776 Equipment Sold "AS IS, WHERE IS": All equipment/property is sold "AS IS, WHERE IS" with no warranty or guarantees, expressed or implied, No operational assessments or testing have been made by Del Peterson on this item, it has been photographed ONLY.



#291 - Farmall H (DR6634)

Farmall H (DR6634), NON RUNNER, gas engine, 4 speed manual transmission, narrow front end, 540 PTO, 11.2-38 tires. Notes: Tractor has been sitting for some time. Item Location: South Sioux City, NE 68776 Equipment Sold "AS IS, WHERE IS": All equipment/property is sold "AS IS, WHERE IS" with no warranty or guarantees, expressed or implied, No operational assessments or testing have been made by Del Peterson on this item, it has been photographed ONLY.



#292 - 1996 IHC 9200 Unit# 08788 (DR6637)

1996 IHC 9200 Unit# 08788 (DR6637), Detroit diesel engine, 10 speed transmission, tandem axle full screw, air ride suspension, 16 ton stainless steel hydraulic fertilizer tender box, rear auger, manula tarp, dual aluminum fuel tanks, rear cushion hitch, AM/FM cassette radio, cruise control, 24.5 tires, Budd wheels, shows 722,580 miles. Notes: PLEASE ALLOW AT LEAST 60 DAYS FOR TITLE TRANSFER. Item Location: South Sioux City, NE 68776 Equipment Sold "AS IS, WHERE IS": All equipment/property is sold "AS IS, WHERE IS" with no warranty or guarantees, expressed or implied, No operational assessments or testing have been made by Del Peterson on this item, it has been photographed ONLY.



#293 - 1999 Ford F350 Unit# 19197 (DR6638)

1999 Ford F350 Unit# 19197 (DR6638), gas engine, 5 speed transmission, 4X4, steel flatbed, fold down sides, gooseneck hitch, rear receiver hitch, AM/FM cassette radio, air conditioning, cruise control, 235/85R16 tires, shows 94,453 miles. Notes: PLEASE ALLOW AT LEAST 60 DAYS FOR TITLE TRANSFER. Item Location: South Sioux City, NE 68776 Equipment Sold "AS IS, WHERE IS": All equipment/property is sold "AS IS, WHERE IS" with no warranty or guarantees, expressed or implied, No operational assessments or testing have been made by Del Peterson on this item, it has been photographed ONLY.



#294 - 2007 Dodge Ram 2500 Unit# 12364 (DR6639)

2007 Dodge Ram 2500 Unit# 12364 (DR6639), 5.7 Hemi gas engine, automatic transmission, 4X4, running boards, Brute II rear ag bumper, AM/FM CD radio, air, cruise control, power windows & locks, 265/70R17 tires, shows 182,824 miles. Notes: PLEASE ALLOW AT LEAST 60 DAYS FOR TITLE TRANSFER. Item Location: South Sioux City, NE 68776 Equipment Sold "AS IS, WHERE IS": All equipment/property is sold "AS IS, WHERE IS" with no warranty or guarantees, expressed or implied, No operational assessments or testing have been made by Del Peterson on this item, it has been photographed ONLY.



#295 - 2011 GMC Sierra Unit# 23712 (DR6640)

2011 GMC Sierra Unit# 23712 (DR6640), gas engine, crew cab, 4X4, bed liner, rear receiver hitch, AM/FM CD radio, power windows & locks, cruise control, air conditioning, 265/70R17 tires, shows 157,828 miles. Notes: PLEASE ALLOW AT LEAST 60 DAYS FOR TITLE TRANSFER. Item Location: South Sioux City, NE 68776 Equipment Sold "AS IS, WHERE IS": All equipment/property is sold "AS IS, WHERE IS" with no warranty or guarantees, expressed or implied, No operational assessments or testing have been made by Del Peterson on this item, it has been photographed ONLY.



#296 - 2008 McKenzie Starwood Camper (TR3500)

2008 McKenzie Starwood Camper (TR3500), Model 26RKS, 28' travel trailer, shower, bathroom, kitchen, retractable awning, tandem axle, (1) slideout. Notes: Item Location: Lyons, NE 68038 Equipment Sold "AS IS, WHERE IS": All equipment/property is sold "AS IS, WHERE IS" with no warranty or guarantees, expressed or implied, No operational assessments or testing have been made by Del Peterson on this item, it has been photographed ONLY.



#297 - Parker Weigh Wagon Unit# 83347 (DR6632)

Parker Weigh Wagon Unit# 83347 (DR6632), model 1550, 18hp gas engine w/electric start, scale w/hand held controls, single axle gear, roll over tarp. Notes: Item Location: South Sioux City, NE 68776 Equipment Sold "AS IS, WHERE IS": All equipment/property is sold "AS IS, WHERE IS" with no warranty or guarantees, expressed or implied, No operational assessments or testing have been made by Del Peterson on this item, it has been photographed ONLY.



#298 - 2004 Honda Shadow (DR6631)

2004 Honda Shadow (DR6631), V twin gas engine, front windshield, leather saddle bags, shows 8447 actual miles. Notes: Item Location: Emerson, NE 68733 Equipment Sold "AS IS, WHERE IS": All equipment/property is sold "AS IS, WHERE IS" with no warranty or guarantees, expressed or implied, No operational assessments or testing have been made by Del Peterson on this item, it has been photographed ONLY.



#299 - 2008 Honda Shadow (DR6630)

2008 Honda Shadow (DR6630), V twin gas engine, front windshield, leather saddle bags, shows 3452 actual miles. Notes: Item Location: Emerson, NE 68733 Equipment Sold "AS IS, WHERE IS": All equipment/property is sold "AS IS, WHERE IS" with no warranty or guarantees, expressed or implied, No operational assessments or testing have been made by Del Peterson on this item, it has been photographed ONLY.



#300 - 2004 8104 Terragator (TH149)

2004 8104 Terragator (TH149), John Deere 8.1L diesel engine, Terrashift transmission, heated and cooled cab, AM/FM, CD player, Airmax 1000 Box, 70' stainless steel Booms, Raven scs 660 sprayer control, Trimble EZ- Guide 250 GPS system, electric roll tarp, Primex 66x43x25 back tires, Alliance 48x31x20 front tires, back tires at 90%, front tires at 20%, shows 3670 hours. Notes: Item Location: Moorhead, MN 56560 Equipment Sold "AS IS, WHERE IS": All equipment/property is sold "AS IS, WHERE IS" with no warranty or guarantees, expressed or implied, No operational assessments or testing have been made by Del Peterson on this item, it has been photographed ONLY.



#301 - 2006 John Deere 9760 STS Combine (KMK272)

2006 John Deere 9760 STS Combine (KMK272), corn/bean combine, bullet rotor, John Deere diesel engine, chopper, lateral tilt feeder house, contour master, HD variable speed feeder house, header height resume, sensing float, Greenstar ready, touch set concave adjust, auto steer, general purpose chaffer, long auger, dial-a-speed header control, lights, heat, air conditioning, am/fm radio, buddy seat, 520 / 85 R 38 front dual tires are at +75%, 28L - 26 rear tires are at +75%, shows 2,424 engine hours, shows 1,488 separator hours. Notes: Item Location: Cedar Falls, IA 50613 Equipment Sold "AS IS, WHERE IS": All equipment/property is sold "AS IS, WHERE IS" with no warranty or guarantees, expressed or implied, No operational assessments or testing have been made by Del Peterson on this item, it has been photographed ONLY.



#302 - 2005 John Deere 1293 Corn Head (KMK274)

2005 John Deere 1293 Corn Head (KMK274), 12 row, 30" spacing, contour master, hydraulic adjust deck plates, dial-a-matic sensors. Notes: Header trailer does not sell in this lot. Item Location: Cedar Falls, IA 50613 Equipment Sold "AS IS, WHERE IS": All equipment/property is sold "AS IS, WHERE IS" with no warranty or guarantees, expressed or implied, No operational assessments or testing have been made by Del Peterson on this item, it has been photographed ONLY.



#303 - 2005 John Deere 635F Hydraflex Header (KMK273)

2005 John Deere 635F Hydraflex Header (KMK273), 35' flexible platform, good straight clean head, good pick up reel, stainless floor, full finger auger, pto. shaft, single point hookup, contour master, hydraulic fore/aft. Notes: Header trailer does not sell in this lot. Item Location: Cedar Falls, IA 50613 Equipment Sold "AS IS, WHERE IS": All equipment/property is sold "AS IS, WHERE IS" with no warranty or guarantees, expressed or implied, No operational assessments or testing have been made by Del Peterson on this item, it has been photographed ONLY.



#304 - Case IH 6800 Combo-Mulch Ripper (MH200)

Case IH 6800 Combo-Mulch Ripper (MH200), 17' 6" wide with 12" spacing, Case 6814 7 shank, auto reset, 24" spacing v-ripper. Notes: Item Location: Mount Vernon, IN 47620 Equipment Sold "AS IS, WHERE IS": All equipment/property is sold "AS IS, WHERE IS" with no warranty or guarantees, expressed or implied, No operational assessments or testing have been made by Del Peterson on this item, it has been photographed ONLY.



#305 - 1988 Pacer Bag/Bulk combo trailer (TH150)

1988 Pacer Bag/Bulk combo trailer (TH150), tires are about 50%, slope plates front half, working condition, brakes 50%. Notes: Item Location: Campbellsburg, IN 47108 Equipment Sold "AS IS, WHERE IS": All equipment/property is sold "AS IS, WHERE IS" with no warranty or guarantees, expressed or implied, No operational assessments or testing have been made by Del Peterson on this item, it has been photographed ONLY.



#306 - 2004 International 9400 DayCab (PD428)

2004 International 9400 DayCab (PD428), Cummins ISX 500HP, 10 speed, 358 gears, 198 wheel base, shows 790,364 miles, oil samples are good. Notes: Item Location: Mountain Lake, MN 56159 Equipment Sold "AS IS, WHERE IS": All equipment/property is sold "AS IS, WHERE IS" with no warranty or guarantees, expressed or implied, No operational assessments or testing have been made by Del Peterson on this item, it has been photographed ONLY.



#307 - 2002 Chevy C7500 (MH199)

2002 Chevy C7500 (MH199), CAT 3126 diesel engine, Eaton Fuller transmission, air brakes, 30,000lb truck, 10,000lb front axle, 20,000lb rear, 18' steel platform & hoist, tires in good condition, truck was bought new, owners installed steel platform & hoist, shows 99989 miles. Notes: Item Location: Elwood, KS 66024 Equipment Sold "AS IS, WHERE IS": All equipment/property is sold "AS IS, WHERE IS" with no warranty or guarantees, expressed or implied, No operational assessments or testing have been made by Del Peterson on this item, it has been photographed ONLY.



#308 - John Deere Head Mover (DL140)

John Deere Head Mover (DL140), use 3 point or modified for use with forklift. Notes: Item Location: Diller, NE 68342 Equipment Sold "AS IS, WHERE IS": All equipment/property is sold "AS IS, WHERE IS" with no warranty or guarantees, expressed or implied, No operational assessments or testing have been made by Del Peterson on this item, it has been photographed ONLY.



#309 - Pallet Racking (DL144)

Pallet Racking (DL144), uprights - 2-12', 2-6'2", 2-7'4", 12-12' cross beams, tear drop holes. Notes: Item Location: Diller, NE 68342 Equipment Sold "AS IS, WHERE IS": All equipment/property is sold "AS IS, WHERE IS" with no warranty or guarantees, expressed or implied, No operational assessments or testing have been made by Del Peterson on this item, it has been photographed ONLY.



#310 - Kent 6324 Series V Field Cultivator (DL143)

Kent 6324 Series V Field Cultivator (DL143), 24', 9" shovels, 5 bar spike harrow. Notes: Item Location: Diller, NE 68342 Equipment Sold "AS IS, WHERE IS": All equipment/property is sold "AS IS, WHERE IS" with no warranty or guarantees, expressed or implied, No operational assessments or testing have been made by Del Peterson on this item, it has been photographed ONLY.



#311 - Yokohama Tire & Rim 295/75R22.5 (DL145)

Yokohama Tire & Rim 295/75R22.5 (DL145), near new tread. Notes: Item Location: Diller, NE 68342 Equipment Sold "AS IS, WHERE IS": All equipment/property is sold "AS IS, WHERE IS" with no warranty or guarantees, expressed or implied, No operational assessments or testing have been made by Del Peterson on this item, it has been photographed ONLY.



#313 - Homemade Flatbed Trailer (DL141)

Homemade Flatbed Trailer (DL141), bed is 76" wide, 98" long, 182" overall, expanded metal floor, tilt bed, used for lawnmower. Notes: NO TITLE. Item Location: Diller, NE 68342 Equipment Sold "AS IS, WHERE IS": All equipment/property is sold "AS IS, WHERE IS" with no warranty or guarantees, expressed or implied, No operational assessments or testing have been made by Del Peterson on this item, it has been photographed ONLY.



#314 - Dearborn 19-5 3pt Blade (DL137)

Dearborn 19-5 3pt Blade (DL137), 6'. Notes: Item Location: Diller, NE 68342 Equipment Sold "AS IS, WHERE IS": All equipment/property is sold "AS IS, WHERE IS" with no warranty or guarantees, expressed or implied, No operational assessments or testing have been made by Del Peterson on this item, it has been photographed ONLY.



#315 - 3pt Boom Pole (DL138)

3pt Boom Pole (DL138), 7' Boom. Notes: Item Location: Diller, NE 68342 Equipment Sold "AS IS, WHERE IS": All equipment/property is sold "AS IS, WHERE IS" with no warranty or guarantees, expressed or implied, No operational assessments or testing have been made by Del Peterson on this item, it has been photographed ONLY.



#316 - J & M Grain Cart Axles (DL142)

J & M Grain Cart Axles (DL142), off of a 620, used only a few seasons then put on a scale kit, stored inside. Notes: Item Location: Diller, NE 68342 Equipment Sold "AS IS, WHERE IS": All equipment/property is sold "AS IS, WHERE IS" with no warranty or guarantees, expressed or implied, No operational assessments or testing have been made by Del Peterson on this item, it has been photographed ONLY.



#317 - Tool Bar (DR6629)

Tool Bar (DR6629), 42.5' Nh3 pull type tool bar, double bar frame, walking tandem main frame axles, hydraulic wings and gauge wheels, NO KNIVES. Notes: Item Location: Waseca, MN 56093 Equipment Sold "AS IS, WHERE IS": All equipment/property is sold "AS IS, WHERE IS" with no warranty or guarantees, expressed or implied, No operational assessments or testing have been made by Del Peterson on this item, it has been photographed ONLY.



#318 - Convey all Conveyor (DR6499)

Convey all Conveyor (DR6499), 35'X10" portable conveyor, cleated belt, top drive 5hp 3 phase electric motor, bottom starter box, manual up/down. Notes: Conveyor has been repainted w/ 2 part good epoxy paint and NOT USED since. Excellent Working Condition. Item Location: Eagle Lake, MN 56024 Equipment Sold "AS IS, WHERE IS": All equipment/property is sold "AS IS, WHERE IS" with no warranty or guarantees, expressed or implied, No operational assessments or testing have been made by Del Peterson on this item, it has been photographed ONLY.



#319 - Koyker Loader K6 (AL170)

Koyker Loader K6 (AL170), K6 model loader, hydraulic hookup. Notes: Mounting brackets are missing on the loader, Came off 1967 International 4100 which is being sold in different lot. Item Location: Black Hawk, CO 80422 Equipment Sold "AS IS, WHERE IS": All equipment/property is sold "AS IS, WHERE IS" with no warranty or guarantees, expressed or implied, No operational assessments or testing have been made by Del Peterson on this item, it has been photographed ONLY.



#320 - 1967 International 4100 (AL169)

1967 International 4100 (AL169), DT 429 engine, 4 speed manual transmission with high and low, hydraulic brakes, tires 23.1-26, tire tread 90%, 30%, 30%,30%, shows 2,122 hours. Notes: PTO drive shaft missing, heater/AC currently does not work, 3 tires have weather cracking, some gauges and lights not working, starts right up, runs and drives good. Seller can provide shipping and can provide shipping quotes. Item Location: Black Hawk, CO 80422 Equipment Sold "AS IS, WHERE IS": All equipment/property is sold "AS IS, WHERE IS" with no warranty or guarantees, expressed or implied, No operational assessments or testing have been made by Del Peterson on this item, it has been photographed ONLY.



#321 - 2002 GMC C6500 (AL168)

2002 GMC C6500 (AL168), 8.2 liter gas engine, Allison automatic transmission, am/FM, bed length 10', total length of bed with dual tool boxes 14', GVW 19,000 LBS, tires 11R 22.5, new fully rebuilt engine with less than 100 miles., shows 170,553 miles. Notes: A/C currently doesn't work, headlights are stuck in high beam, tear in seat, front bumper bent, starts and runs good, transmission works good, seller can arrange shipping and supply shipping quotes. Item Location: Black Hawk, CO 80422 Equipment Sold "AS IS, WHERE IS": All equipment/property is sold "AS IS, WHERE IS" with no warranty or guarantees, expressed or implied, No operational assessments or testing have been made by Del Peterson on this item, it has been photographed ONLY.



#323 - 1993 International Stainless Steel 5000 Gallon Insulated Tank Trailer (EG210)

1993 International Stainless Steel 5000 Gallon Insulated Tank Trailer (EG210), 5 compartments (2) 1500 gallon, (2) 500 gallon (1) 1000 gallon compartments, air ride suspension, all stainless plumbing to a side unload cabinet, (2) hose trays, good tires and brakes, full catwalk across the top, very straight trailer, no damage anywhere. Notes: Item Location: Genoa, IL 60135 Equipment Sold "AS IS, WHERE IS": All equipment/property is sold "AS IS, WHERE IS" with no warranty or guarantees, expressed or implied, No operational assessments or testing have been made by Del Peterson on this item, it has been photographed ONLY.



#324 - American Rotary 20hp Phase Converter (CG330)

American Rotary 20hp Phase Converter (CG330), 10hp 3 phase motor, 15 KW Baldor converter motor, 230/460 volt, reliance electric 10hp 3 phase motor, 1750 RPM 230/460 volt, 1 3/8" shaft, everything works good. Notes: Both switch boxes and wire goes with. Item Location: Estherville, IA 51334 Equipment Sold "AS IS, WHERE IS": All equipment/property is sold "AS IS, WHERE IS" with no warranty or guarantees, expressed or implied, No operational assessments or testing have been made by Del Peterson on this item, it has been photographed ONLY.



#325 - Bernau and Sons Inc Sturd-E-Built 3-point Quick Attach Hitch (MH195)

Bernau and Sons Inc Sturd-E-Built 3-point Quick Attach Hitch (MH195), 3- point quick attach hitch. Notes: Item Location: Webster City, IA 50595 Equipment Sold "AS IS, WHERE IS": All equipment/property is sold "AS IS, WHERE IS" with no warranty or guarantees, expressed or implied, No operational assessments or testing have been made by Del Peterson on this item, it has been photographed ONLY.



#326 - Stone Concrete Mixer 655PM (MH196)

Stone Concrete Mixer 655PM (MH196), Honda motor, 2" ball mount, new tires, can pull behind a truck. Notes: Item Location: Webster City, IA 50595 Equipment Sold "AS IS, WHERE IS": All equipment/property is sold "AS IS, WHERE IS" with no warranty or guarantees, expressed or implied, No operational assessments or testing have been made by Del Peterson on this item, it has been photographed ONLY.



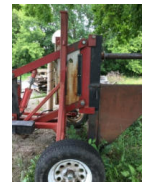
#327 - Portable Concrete Mixer w/ Electronic Motor (MH197)

Portable Concrete Mixer w/ Electronic Motor (MH197), 6 cubic feet, 1HP 120 VAC 60H2 motor, portable, in good condition. Notes: Item Location: Webster City, IA 50595 Equipment Sold "AS IS, WHERE IS": All equipment/property is sold "AS IS, WHERE IS" with no warranty or guarantees, expressed or implied, No operational assessments or testing have been made by Del Peterson on this item, it has been photographed ONLY.



#328 - Silt Fence Installer (MH198)

Silt Fence Installer (MH198), Hydraulic powered, pin hitch, well built piece of equipment, has good tires. Notes: Item Location: Webster City, IA 50595 Equipment Sold "AS IS, WHERE IS": All equipment/property is sold "AS IS, WHERE IS" with no warranty or guarantees, expressed or implied, No operational assessments or testing have been made by Del Peterson on this item, it has been photographed ONLY.



#329 - 2001 Komatsu PC 400 LC - 6 LM (KMK1044)

2001 Komatsu PC 400 LC - 6 LM (KMK1044), diesel engine, hydrostatic transmission, heat, air conditioning, am/fm radio, 55" tooth bucket, lights, wipers, swing lock, shows 10462 hours. Notes: Recent maintenance includes: New under carriage, injector pump, bucket, bucket pins, starter, cylinders rebuilt, new hydraulic hoses on drive replaced, new air conditioner comp. Item Location: Edgar, NE 68935 Equipment Sold "AS IS, WHERE IS": All equipment/property is sold "AS IS, WHERE IS" with no warranty or guarantees, expressed or implied, No operational assessments or testing have been made by Del Peterson on this item, it has been photographed ONLY.



#330 - CAT 627B Push/Pull Scraper (KMK1053)

CAT 627B Push/Pull Scraper (KMK1053), Cat 3306 engine, diesel, ROPS, enclosed cab, bowl and cutting edge are good, tires 29.5 - 35, shows 3,133 hours. Notes: New front transmission, front drive \$18,000 spent, new injectors front motor, new air compressor. Item Location: Edgar, NE 68935 Equipment Sold "AS IS, WHERE IS": All equipment/property is sold "AS IS, WHERE IS" with no warranty or guarantees, expressed or implied, No operational assessments or testing have been made by Del Peterson on this item, it has been photographed ONLY.



#331 - 1994 CAT D6H LGP Dozer (KMK1054)

1994 CAT D6H LGP Dozer (KMK1054), CAT 3306, diesel engine, ROPS, heat, air conditioning, 152" blade, 3' wide tracks, shows 1541 hours, hour meter was replaced at 6,402 hours, total 7,943 hours. Notes: Cracked glass has been ordered and will be installed before date of sale. New undercarriage, clutches, brakes, transmission, injector pump, air conditioner pump. Contact seller for service and invoices totaling over \$100,000. Item Location: Edgar, NE 68935 Equipment Sold "AS IS, WHERE IS": All equipment/property is sold "AS IS, WHERE IS" with no warranty or guarantees, expressed or implied, No operational assessments or testing have been made by Del Peterson on this item, it has been photographed ONLY.



#332 - Genie GS-3268 RT Scissor Lift (KMK1049)

Genie GS-3268 RT Scissor Lift (KMK1049), 32' platform height, 68" wide platform, 4x4, gas/propane, rough terrain scissor lift, outlets to run power tools from platform, Flotation 23 foam filled tires, shows 3,001 hours. Notes: Recently replaced carburetor, distributor/ ignition electronic system, and starter. Item Location: Edgar, NE 68935 Equipment Sold "AS IS, WHERE IS": All equipment/property is sold "AS IS, WHERE IS" with no warranty or guarantees, expressed or implied, No operational assessments or testing have been made by Del Peterson on this item, it has been photographed ONLY.



#333 - Lull 844 Telehandler (KMK1050)

Lull 844 Telehandler (KMK1050), 844TT - 42' Highlander, 4x4, John Deere, diesel engine, engine serial number T04276D15747, shuttle shift transmission, hydraulic sliding gentry, rear counter weight, hydraulic tilt forks, Samson G-2 Road Grabber Super HD 13.00 - 24 tires, shows 5,333 hours. Notes: All Cylinders Rebuilt. Item Location: Edgar, NE 68935 Equipment Sold "AS IS, WHERE IS": All equipment/property is sold "AS IS, WHERE IS" with no warranty or guarantees, expressed or implied, No operational assessments or testing have been made by Del Peterson on this item, it has been photographed ONLY.



#334 - John Deere 8410 T Tractor (KMK1052)

John Deere 8410 T Tractor (KMK1052), John Deere diesel engine, automatic power shift transmission, air conditioning, heat, Jensen am/fm/sirius ready radio, full front weights, 3 remotes, 3 point hitch, Implement Management System, Hitch Management System, pto., shows 4,384 hours. Notes: New crate engine replaced by previous owner, engine serial number: SE6081H006049. Item Location: Edgar, NE 68935 Equipment Sold "AS IS, WHERE IS": All equipment/property is sold "AS IS, WHERE IS" with no warranty or guarantees, expressed or implied, No operational assessments or testing have been made by Del Peterson on this item, it has been photographed ONLY.



#335 - 2000 Ditch Witch 7610 (KMK1051)

2000 Ditch Witch 7610 (KMK1051), model number 5110DD, Deutz, F4L912, diesel engine, manual transmission, rollbar, rear trencher, front mount backhoe, 16" tooth bucket, 6' blade, 38 x 18.00 - 20 tires, shows 1,531 hours. Notes: New drive belt, new chain/sprocket for trencher, new clutch. Item Location: Edgar, NE 68935 Equipment Sold "AS IS, WHERE IS": All equipment/property is sold "AS IS, WHERE IS" with no warranty or guarantees, expressed or implied, No operational assessments or testing have been made by Del Peterson on this item, it has been photographed ONLY.



#336 - 1989 Ford F-800 Boom Truck (KMK1047)

1989 Ford F-800 Boom Truck (KMK1047), 429 engine, 5 speed manual transmission, dual fuel tanks, single axle, heat, air conditioning, am/fm radio, 7 compartment service body, Altec bucket lift, model D 845 - TR, lift S/N: 0889T0711, tires 10.00 - 20, shows 2457 hours, shows 102,154 miles. Notes: New tires, starter, and clutch fan. Windshield is cracked. Item Location: Edgar, NE 68935 Equipment Sold "AS IS, WHERE IS": All equipment/property is sold "AS IS, WHERE IS" with no warranty or guarantees, expressed or implied, No operational assessments or testing have been made by Del Peterson on this item, it has been photographed ONLY.



#337 - 1984 Ford F-250 XL, 4x4 (KMK1048)

1984 Ford F-250 XL, 4x4 (KMK1048), 7.3 L, diesel engine, automatic transmission, block heater, 5th wheel and standard hitch, trailer breaks, am/fm radio, heat, air conditioning, tires LT235/ 85 R16, shows 87,722 miles. Notes: Oil in anti-freeze, maybe oil cooler. Drove it everyday. Transmission rebuilt, injector pump rebuilt, new starter, new master cylinder. Item Location: Edgar, NE 68935 Equipment Sold "AS IS, WHERE IS": All equipment/property is sold "AS IS, WHERE IS" with no warranty or guarantees, expressed or implied, No operational assessments or testing have been made by Del Peterson on this item, it has been photographed ONLY.



#338 - 2013 Bobcat T870 (KMK1055)

2013 Bobcat T870 (KMK1055), EROPS, auxiliary hydraulics, 99 hp., 2 speed, standard controls, new 18" wide tracks, 86" tooth bucket, heat, ac, Jensen am/fm/wb receiver, operators handbook, shows 1892 hours. Notes: Purchased new - Original owner machine. Item Location: Edgar, NE 68935 Equipment Sold "AS IS, WHERE IS": All equipment/property is sold "AS IS, WHERE IS" with no warranty or guarantees, expressed or implied, No operational assessments or testing have been made by Del Peterson on this item, it has been photographed ONLY.



#339 - Skid Loader Fork Lift Attachment (KMK1035)

Skid Loader Fork Lift Attachment (KMK1035), 48" long, 46" wide, came off Bobcat skid loader. Notes: Item Location: Edgar, NE 68935 Equipment Sold "AS IS, WHERE IS": All equipment/property is sold "AS IS, WHERE IS" with no warranty or guarantees, expressed or implied, No operational assessments or testing have been made by Del Peterson on this item, it has been photographed ONLY.



#340 - Skid Loader Grapple Attachment (KMK1036)

Skid Loader Grapple Attachment (KMK1036), hydraulic grapple, 84" wide, 10 tines with 9" spacing, came off Bobcat skid loader. Notes: 1 tine missing and 2 are bent. Item Location: Edgar, NE 68935 Equipment Sold "AS IS, WHERE IS": All equipment/property is sold "AS IS, WHERE IS" with no warranty or guarantees, expressed or implied, No operational assessments or testing have been made by Del Peterson on this item, it has been photographed ONLY.



#341 - Snow Blade Attachment (KMK1043)

Snow Blade Attachment (KMK1043), 9' blade, hydraulic, skid loader mount, came off Bobcat skid loader. Notes: Item Location: Edgar, NE 68935 Equipment Sold "AS IS, WHERE IS": All equipment/property is sold "AS IS, WHERE IS" with no warranty or guarantees, expressed or implied, No operational assessments or testing have been made by Del Peterson on this item, it has been photographed ONLY.



#342 - JiB Thumb Attachment PC400-6 (KMK1037)

JiB Thumb Attachment PC400-6 (KMK1037), JiB, 48" wide, model PC400-6, C/N: 90A2407, OEM: AKR4369. Notes: Item Location: Edgar, NE 68935 Equipment Sold "AS IS, WHERE IS": All equipment/property is sold "AS IS, WHERE IS" with no warranty or guarantees, expressed or implied, No operational assessments or testing have been made by Del Peterson on this item, it has been photographed ONLY.



#343 - Skid Loader Post Puller Attachment (KMK1041)

Skid Loader Post Puller Attachment (KMK1041), 46" wide, fits forks for skid loader. Notes: Item Location: Edgar, NE 68935 Equipment Sold "AS IS, WHERE IS": All equipment/property is sold "AS IS, WHERE IS" with no warranty or guarantees, expressed or implied, No operational assessments or testing have been made by Del Peterson on this item, it has been photographed ONLY.



#344 - 32" Auger Bit (KMK1046)

32" Auger Bit (KMK1046), 32" auger bit. Notes: Item Location: Edgar, NE 68935 Equipment Sold "AS IS, WHERE IS": All equipment/property is sold "AS IS, WHERE IS" with no warranty or guarantees, expressed or implied, No operational assessments or testing have been made by Del Peterson on this item, it has been photographed ONLY.



#345 - Auger Attachment (KMK1040)

Auger Attachment (KMK1040), hydraulic, came off Bobcat skid loader. Notes: Item Location: Edgar, NE 68935 Equipment Sold "AS IS, WHERE IS": All equipment/property is sold "AS IS, WHERE IS" with no warranty or guarantees, expressed or implied, No operational assessments or testing have been made by Del Peterson on this item, it has been photographed ONLY.



#346 - 36" Auger Bit (KMK1060)

36" Auger Bit (KMK1060), 36" auger bit. Notes: Item Location: Edgar, NE 68935 Equipment Sold "AS IS, WHERE IS": All equipment/property is sold "AS IS, WHERE IS" with no warranty or guarantees, expressed or implied, No operational assessments or testing have been made by Del Peterson on this item, it has been photographed ONLY.



#347 - 18" Auger Bit (KMK1061)

18" Auger Bit (KMK1061), 18" auger bit. Notes: Item Location: Edgar, NE 68935 Equipment Sold "AS IS, WHERE IS": All equipment/property is sold "AS IS, WHERE IS" with no warranty or guarantees, expressed or implied, No operational assessments or testing have been made by Del Peterson on this item, it has been photographed ONLY.



#348 - Bobcat LT 313 Trencher Attachment (KMK1062)

Bobcat LT 313 Trencher Attachment (KMK1062), model LT 313, 4ft auger, came off Bobcat skid loader. Notes: Item Location: Edgar, NE 68935 Equipment Sold "AS IS, WHERE IS": All equipment/property is sold "AS IS, WHERE IS" with no warranty or guarantees, expressed or implied, No operational assessments or testing have been made by Del Peterson on this item, it has been photographed ONLY.



#349 - John Deere RT55 Tiller Attachment (KMK1042)

John Deere RT55 Tiller Attachment (KMK1042), worksite pro, hydraulic, rotary tiller, came off Bobcat skid loader. Notes: Item Location: Edgar, NE 68935 Equipment Sold "AS IS, WHERE IS": All equipment/property is sold "AS IS, WHERE IS" with no warranty or guarantees, expressed or implied, No operational assessments or testing have been made by Del Peterson on this item, it has been photographed ONLY.



#350 - 1984 Fruehauf Pup Trailer (KMK1030)

1984 Fruehauf Pup Trailer (KMK1030), hydraulic pup trailer, triple axle, aluminum, 24.5 tires, Dayton wheels, new tarp, new liner. Notes: Item Location: Edgar, NE 68935 Equipment Sold "AS IS, WHERE IS": All equipment/property is sold "AS IS, WHERE IS" with no warranty or guarantees, expressed or implied, No operational assessments or testing have been made by Del Peterson on this item, it has been photographed ONLY.



#352 - 1985 Fruehauf Aluminum Pup Trailer (KMK1032)

1985 Fruehauf Aluminum Pup Trailer (KMK1032), triple axle, aluminum, hydraulic pup trailer, new tarp and liner, Budd wheels, 24.5 tires. Notes: Item Location: Edgar, NE 68935 Equipment Sold "AS IS, WHERE IS": All equipment/property is sold "AS IS, WHERE IS" with no warranty or guarantees, expressed or implied, No operational assessments or testing have been made by Del Peterson on this item, it has been photographed ONLY.



#353 - 1987 Great Dane Curtain Side Trailer (KMK1038)

1987 Great Dane Curtain Side Trailer (KMK1038), 48' trailer, 102" wide, tandem axle, 11 R 22.5 tires. Notes: Item Location: Edgar, NE 68935 Equipment Sold "AS IS, WHERE IS": All equipment/property is sold "AS IS, WHERE IS" with no warranty or guarantees, expressed or implied, No operational assessments or testing have been made by Del Peterson on this item, it has been photographed ONLY.



#354 - Goodall Startall 24 Volt Gas Powered Booster Pack (KMK271)

Goodall Startall 24 Volt Gas Powered Booster Pack (KMK271), model: 422437, type: 4045, booster pack, gas, 24 volt, Briggs & Stratton, 18 hp. Twin cylinder, No. 1 and No. 2 cables with separate amp. gages. Notes: Item Location: Edgar, NE 68935 Equipment Sold "AS IS, WHERE IS": All equipment/property is sold "AS IS, WHERE IS" with no warranty or guarantees, expressed or implied, No operational assessments or testing have been made by Del Peterson on this item, it has been photographed ONLY.



#355 - Telehandler Cage Basket (KMK1031)

Telehandler Cage Basket (KMK1031), 6' cage, safety latch door. Notes: Item Location: Edgar, NE 68935 Equipment Sold "AS IS, WHERE IS": All equipment/property is sold "AS IS, WHERE IS" with no warranty or guarantees, expressed or implied, No operational assessments or testing have been made by Del Peterson on this item, it has been photographed ONLY.



#356 - Case Maxi-Sneaker (KMK1057)

Case Maxi-Sneaker (KMK1057), series C, pipe puller, hydrostatic drive, lever operated, speed and direction control, factory duals, tires 23 x 10.50 - 12, shows 2,324 hours. Notes: Item Location: Edgar, NE 68935 Equipment Sold "AS IS, WHERE IS": All equipment/property is sold "AS IS, WHERE IS" with no warranty or guarantees, expressed or implied, No operational assessments or testing have been made by Del Peterson on this item, it has been photographed ONLY.



#357 - 1984 Load King Drop Down Neck Heavy Haul Low Boy W/ Stinger and Jeep (KMK1045)

1984 Load King Drop Down Neck Heavy Haul Low Boy W/ Stinger and Jeep (KMK1045), power fold automatic folding gooseneck, new self contained Honda 6X390 motor, new pump, triple axle low boy, 10' wide with outriggers, 13' 4" with 2' drop to 19' deck, 2' incline to 15' neck, 10 R 20 tires, pin adjustment 2', jeep: single axle, Cushman hitch, 10 R 20 tires, stinger: model HD50, tandem axle, walking beam suspension, sliding fifth wheel, 11 R 22.5 tires. Notes: Jeep, Stinger and Low Boy are all under 1 title. Low Boy breaks everything new, drums, cams shoes bushings, and springs. New wood planks. Item Location: Edgar, NE 68935 Equipment Sold "AS IS, WHERE IS": All equipment/property is sold "AS IS, WHERE IS" with no warranty or guarantees, expressed or implied, No operational assessments or testing have been made by Del Peterson on this item, it has been photographed ONLY.



#358 - 2001 Mack Gold Dog CH613 (KMK1058)

2001 Mack Gold Dog CH613 (KMK1058), Gold Dog CH613 model, day cab, Mack diesel engine, 460 hp., Maxi Torque, 13 speed transmission, tandem axel, full screw, air ride suspension, Panasonic am/fm/cassette radio, heat, air conditioning, engine break, cruise control, hydraulic wet kit, 5th wheel, rear pintle hitch, chrome bumper, dual aluminum fuel tanks, Budd wheels, outside aluminums, tires 11 R - 22.5, shows 2913 hours, shows 673,910 miles. Notes: New air dryer. Item Location: Edgar, NE 68935 Equipment Sold "AS IS, WHERE IS": All equipment/property is sold "AS IS, WHERE IS" with no warranty or guarantees, expressed or implied, No operational assessments or testing have been made by Del Peterson on this item, it has been photographed ONLY.



#359 - Priefert Squeeze Chute (NP5129)

Priefert Squeeze Chute (NP5129), Model S0191, manual/automatic head gate, 78" height, 90" length, 42" width. Notes: NEW, NEVER USED. Item Location: Oakland, NE 68045 Equipment Sold "AS IS, WHERE IS": All equipment/property is sold "AS IS, WHERE IS" with no warranty or guarantees, expressed or implied, No operational assessments or testing have been made by Del Peterson on this item, it has been photographed ONLY.



#360 - Priefert Squeeze Chute (NP5130)

Priefert Squeeze Chute (NP5130), Model S04, manual/automatic head gate, 80" height, 94.5" length, 53" width. Notes: NEW, NEVER USED. Item Location: Oakland, NE 68045 Equipment Sold "AS IS, WHERE IS": All equipment/property is sold "AS IS, WHERE IS" with no warranty or guarantees, expressed or implied, No operational assessments or testing have been made by Del Peterson on this item, it has been photographed ONLY.



#361 - Werk Weld Inc. Fenceline Feed Bunk (NP5131)

Werk Weld Inc. Fenceline Feed Bunk (NP5131), 20' length, 14" feed openings, drainage holes on each end, 10 gauge steel feed pan (allow 3-4 weeks for delivery). Notes: NEW, NEVER USED. Item Location: Oakland, NE 68045 Equipment Sold "AS IS, WHERE IS": All equipment/property is sold "AS IS, WHERE IS" with no warranty or guarantees, expressed or implied, No operational assessments or testing have been made by Del Peterson on this item, it has been photographed ONLY.



#362 - Apache Creep/Self Feeder (NP5132)

Apache Creep/Self Feeder (NP5132), Model CF8A150, 8' length, 150 bushel capacity, 12 gauge pan & floor, 2" heavy duty spindles, single axle, 9.5L-15 tires, 7,500lb capacity axles. Notes: NEW, NEVER USED. Item Location: Oakland, NE 68045 Equipment Sold "AS IS, WHERE IS": All equipment/property is sold "AS IS, WHERE IS" with no warranty or guarantees, expressed or implied, No operational assessments or testing have been made by Del Peterson on this item, it has been photographed ONLY.



#363 - Apache Feeder Wagon (NP5133)

Apache Feeder Wagon (NP5133), Model WFW20A1, 20' length, 12 gauge pan, heavy duty 2" spindles, all tubing is vented, tongue extension, "Z" bar slants, NEW 9.5L-15 tires. Notes: NEW, NEVER USED. Item Location: Oakland, NE 68045 Equipment Sold "AS IS, WHERE IS": All equipment/property is sold "AS IS, WHERE IS" with no warranty or guarantees, expressed or implied, No operational assessments or testing have been made by Del Peterson on this item, it has been photographed ONLY.



#364 - Apache Feed Bunk (NP5134)

Apache Feed Bunk (NP5134), Model FBT24A116D, 24' length, removable tongue, (2) stabilizer posts. Notes: NEW, NEVER USED. Item Location: Oakland, NE 68045 Equipment Sold "AS IS, WHERE IS": All equipment/property is sold "AS IS, WHERE IS" with no warranty or guarantees, expressed or implied, No operational assessments or testing have been made by Del Peterson on this item, it has been photographed ONLY.



#365 - Silex QR12 Hay Rake (NP5135)

Silex QR12 Hay Rake (NP5135), 12 wheel rake, 55" "V" type wheels, hydraulic lift and fold, 15" tires, 25' working width. Notes: NEW Demo Unit. Item Location: Oakland, NE 68045 Equipment Sold "AS IS, WHERE IS": All equipment/property is sold "AS IS, WHERE IS" with no warranty or guarantees, expressed or implied, No operational assessments or testing have been made by Del Peterson on this item, it has been photographed ONLY.



#366 - 2014 Silex Columbia TR/7 Hay Rake (NP5136)

2014 Silex Columbia TR/7 Hay Rake (NP5136), 9 wheel rake, hydraulic lift, 14 MPH operating speed, 18' working width. Notes: NEW Demo Unit. Item Location: Oakland, NE 68045 Equipment Sold "AS IS, WHERE IS": All equipment/property is sold "AS IS, WHERE IS" with no warranty or guarantees, expressed or implied, No operational assessments or testing have been made by Del Peterson on this item, it has been photographed ONLY.



#367 - 2008 Peterbilt 386 (PD320)

2008 Peterbilt 386 (PD320), ISX Cummins 455 HP, 10 speed, 70 inch unibuilt sleeper, 235 Wheelbase, 3.36 rear end, 11R 22.5, regen filter def deleted, full tilt, service and maintenance records available, shows 930000 miles. Notes: Item Location: Sanborn, IA 51248 Equipment Sold "AS IS, WHERE IS": All equipment/property is sold "AS IS, WHERE IS" with no warranty or guarantees, expressed or implied, No operational assessments or testing have been made by Del Peterson on this item, it has been photographed ONLY.



#368 - 2011 Drive Over Grain Auger Model 14 (PD431)

2011 Drive Over Grain Auger Model 14 (PD431), quick pit with electric drive, 16' 8" discharge, SF20" & SH4.2" pulley, 3 groove, only used for three harvest seasons. Notes: Item Location: Sanborn, IA 51248 Equipment Sold "AS IS, WHERE IS": All equipment/property is sold "AS IS, WHERE IS" with no warranty or guarantees, expressed or implied, No operational assessments or testing have been made by Del Peterson on this item, it has been photographed ONLY.



#369 - 2012 Eliminator Stackable Utility Model EL8524TA3 Trailer (EG277)

2012 Eliminator Stackable Utility Model EL8524TA3 Trailer (EG277), 34' Extended Triple Tube Tongue, 2-Way Sidewall Vent (Aluminum), Aluminum Package, Additional Height 54" (Heavy Lift Included), 36" RV Door with Window. Notes: Item Location: Mascoutah, IL 62258 Equipment Sold "AS IS, WHERE IS": All equipment/property is sold "AS IS, WHERE IS" with no warranty or guarantees, expressed or implied, No operational assessments or testing have been made by Del Peterson on this item, it has been photographed ONLY.



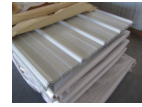
#370 - Metal Siding (DR-6602)

Metal Siding (DR-6602), NEW UNUSED (30) sheets, American made, White color, 18'-4" long X 36" overlap coverage, Premium Pro Rib Profile style, 29 gauge. ALWAYS stored inside. Meets all USA building material engineering codes for Tested Tolerances for wind & snow. USA stamped seal of approval documentation on all products. Notes: Loadout IS available with flexible appointments. Can also offer hardware, trim, corners at wholesale prices. Item Location: Monroe, NE 68647 Equipment Sold "AS IS, WHERE IS": All equipment/property is sold "AS IS, WHERE IS" with no warranty or guarantees, expressed or implied, No operational assessments or testing have been made by Del Peterson on this item, it has been photographed ONLY.



#371 - Metal Siding (DR-6603)

Metal Siding (DR-6603), NEW UNUSED (30) sheets, American made, White color, 18'-4" long X 36" overlap coverage, Premium Pro Rib Profile style, 29 gauge. ALWAYS stored inside. Meets all USA building material engineering codes for Tested Tolerances for wind & snow. USA stamped seal of approval documentation on all products. Notes: Loadout IS available with flexible appointments. Can also offer hardware, trim, corners at wholesale prices. Item Location: Monroe, NE 68647 Equipment Sold "AS IS, WHERE IS": All equipment/property is sold "AS IS, WHERE IS" with no warranty or guarantees, expressed or implied, No operational assessments or testing have been made by Del Peterson on this item, it has been photographed ONLY.



#372 - Metal Siding (DR-6604)

Metal Siding (DR-6604), NEW UNUSED (30) sheets, American made, White color, 18'-4" long X 36" overlap coverage, Premium Pro Rib Profile style, 29 gauge. ALWAYS stored inside. Meets all USA building material engineering codes for Tested Tolerances for wind & snow. USA stamped seal of approval documentation on all products. Notes: Loadout IS available with flexible appointments. Can also offer hardware, trim, corners at wholesale prices. Item Location: Monroe, NE 68647 Equipment Sold "AS IS, WHERE IS": All equipment/property is sold "AS IS, WHERE IS" with no warranty or guarantees, expressed or implied, No operational assessments or testing have been made by Del Peterson on this item, it has been photographed ONLY.



#373 - Metal Siding (DR-6605)

Metal Siding (DR-6605), NEW UNUSED (30) sheets, American made, White color, 18'-4" long X 36" overlap coverage, Premium Pro Rib Profile style, 29 gauge. ALWAYS stored inside. Meets all USA building material engineering codes for Tested Tolerances for wind & snow. USA stamped seal of approval documentation on all products. Notes: Loadout IS available with flexible appointments. Can also offer hardware, trim, corners at wholesale prices. Item Location: Monroe, NE 68647 Equipment Sold "AS IS, WHERE IS": All equipment/property is sold "AS IS, WHERE IS" with no warranty or guarantees, expressed or implied, No operational assessments or testing have been made by Del Peterson on this item, it has been photographed ONLY.



#374 - Metal Siding (DR-6606)

Metal Siding (DR-6606), NEW UNUSED (30) sheets, American made, White color, 18'-4" long X 36" overlap coverage, Premium Pro Rib Profile style, 29 gauge. ALWAYS stored inside. Meets all USA building material engineering codes for Tested Tolerances for wind & snow. USA stamped seal of approval documentation on all products. Notes: Loadout IS available with flexible appointments. Can also offer hardware, trim, corners at wholesale prices. Item Location: Monroe, NE 68647 Equipment Sold "AS IS, WHERE IS": All equipment/property is sold "AS IS, WHERE IS" with no warranty or guarantees, expressed or implied, No operational assessments or testing have been made by Del Peterson on this item, it has been photographed ONLY.



#375 - Metal Siding (DR-6607)

Metal Siding (DR-6607), NEW UNUSED (30) sheets, American made, White color, 18'-4" long X 36" overlap coverage, Premium Pro Rib Profile style, 29 gauge. ALWAYS stored inside. Meets all USA building material engineering codes for Tested Tolerances for wind & snow. USA stamped seal of approval documentation on all products. Notes: Loadout IS available with flexible appointments. Can also offer hardware, trim, corners at wholesale prices. Item Location: Monroe, NE 68647 Equipment Sold "AS IS, WHERE IS": All equipment/property is sold "AS IS, WHERE IS" with no warranty or guarantees, expressed or implied, No operational assessments or testing have been made by Del Peterson on this item, it has been photographed ONLY.



#376 - Metal Siding (DR-6608)

Metal Siding (DR-6608), NEW UNUSED (30) sheets, American made, White color, 18'-4" long X 36" overlap coverage, Premium Pro Rib Profile style, 29 gauge. ALWAYS stored inside. Meets all USA building material engineering codes for Tested Tolerances for wind & snow. USA stamped seal of approval documentation on all products. Notes: Loadout IS available with flexible appointments. Can also offer hardware, trim, corners at wholesale prices. Item Location: Monroe, NE 68647 Equipment Sold "AS IS, WHERE IS": All equipment/property is sold "AS IS, WHERE IS" with no warranty or guarantees, expressed or implied, No operational assessments or testing have been made by Del Peterson on this item, it has been photographed ONLY.



#377 - Metal Siding (DR-6609)

Metal Siding (DR-6609), NEW UNUSED (30) sheets, American made, White color, 18'-4" long X 36" overlap coverage, Premium Pro Rib Profile style, 29 gauge. ALWAYS stored inside. Meets all USA building material engineering codes for Tested Tolerances for wind & snow. USA stamped seal of approval documentation on all products. Notes: Loadout IS available with flexible appointments. Can also offer hardware, trim, corners at wholesale prices. Item Location: Monroe, NE 68647 Equipment Sold "AS IS, WHERE IS": All equipment/property is sold "AS IS, WHERE IS" with no warranty or guarantees, expressed or implied, No operational assessments or testing have been made by Del Peterson on this item, it has been photographed ONLY.



#378 - Metal Siding (DR-6610)

Metal Siding (DR-6610), NEW UNUSED (30) sheets, American made, White color, 16'-4" long X 36" overlap coverage, Premium Pro Rib Profile style, 29 gauge. ALWAYS stored inside. Meets all USA building material engineering codes for Tested Tolerances for wind & snow. USA stamped seal of approval documentation on all products. Notes: Loadout IS available with flexible appointments. Can also offer hardware, trim, corners at wholesale prices. Item Location: Monroe, NE 68647 Equipment Sold "AS IS, WHERE IS": All equipment/property is sold "AS IS, WHERE IS" with no warranty or guarantees, expressed or implied, No operational assessments or testing have been made by Del Peterson on this item, it has been photographed ONLY.



#379 - Metal Siding (DR-6611)

Metal Siding (DR-6611), NEW UNUSED (30) sheets, American made, White color, 16'-4" long X 36" overlap coverage, Premium Pro Rib Profile style, 29 gauge. ALWAYS stored inside. Meets all USA building material engineering codes for Tested Tolerances for wind & snow. USA stamped seal of approval documentation on all products. Notes: Loadout IS available with flexible appointments. Can also offer hardware, trim, corners at wholesale prices. Item Location: Monroe, NE 68647 Equipment Sold "AS IS, WHERE IS": All equipment/property is sold "AS IS, WHERE IS" with no warranty or guarantees, expressed or implied, No operational assessments or testing have been made by Del Peterson on this item, it has been photographed ONLY.



#380 - Metal Siding (DR-6612)

Metal Siding (DR-6612), NEW UNUSED (30) sheets, American made, White color, 16'-4" long X 36" overlap coverage, Premium Pro Rib Profile style, 29 gauge. ALWAYS stored inside. Meets all USA building material engineering codes for Tested Tolerances for wind & snow. USA stamped seal of approval documentation on all products. Notes: Loadout IS available with flexible appointments. Can also offer hardware, trim, corners at wholesale prices. Item Location: Monroe, NE 68647 Equipment Sold "AS IS, WHERE IS": All equipment/property is sold "AS IS, WHERE IS" with no warranty or guarantees, expressed or implied, No operational assessments or testing have been made by Del Peterson on this item, it has been photographed ONLY.



#381 - Metal Siding (DR-6613)

Metal Siding (DR-6613), NEW UNUSED (30) sheets, American made, White color, 16'-4" long X 36" overlap coverage, Premium Pro Rib Profile style, 29 gauge. ALWAYS stored inside. Meets all USA building material engineering codes for Tested Tolerances for wind & snow. USA stamped seal of approval documentation on all products. Notes: Loadout IS available with flexible appointments. Can also offer hardware, trim, corners at wholesale prices. Item Location: Monroe, NE 68647 Equipment Sold "AS IS, WHERE IS": All equipment/property is sold "AS IS, WHERE IS" with no warranty or guarantees, expressed or implied, No operational assessments or testing have been made by Del Peterson on this item, it has been photographed ONLY.



#382 - Metal Siding (DR-6614)

Metal Siding (DR-6614), NEW UNUSED (30) sheets, American made, White color, 16'-4" long X 36" overlap coverage, Premium Pro Rib Profile style, 29 gauge. ALWAYS stored inside. Meets all USA building material engineering codes for Tested Tolerances for wind & snow. USA stamped seal of approval documentation on all products. Notes: Loadout IS available with flexible appointments. Can also offer hardware, trim, corners at wholesale prices. Item Location: Monroe, NE 68647 Equipment Sold "AS IS, WHERE IS": All equipment/property is sold "AS IS, WHERE IS" with no warranty or guarantees, expressed or implied, No operational assessments or testing have been made by Del Peterson on this item, it has been photographed ONLY.



#383 - Metal Siding (DR-6615)

Metal Siding (DR-6615), NEW UNUSED (30) sheets, American made, White color, 16'-4" long X 36" overlap coverage, Premium Pro Rib Profile style, 29 gauge. ALWAYS stored inside. Meets all USA building material engineering codes for Tested Tolerances for wind & snow. USA stamped seal of approval documentation on all products. Notes: Loadout IS available with flexible appointments. Can also offer hardware, trim, corners at wholesale prices. Item Location: Monroe, NE 68647 Equipment Sold "AS IS, WHERE IS": All equipment/property is sold "AS IS, WHERE IS" with no warranty or guarantees, expressed or implied, No operational assessments or testing have been made by Del Peterson on this item, it has been photographed ONLY.



#384 - Metal Siding (DR-6616)

Metal Siding (DR-6616), NEW UNUSED (30) sheets, American made, White color, 16'-4" long X 36" overlap coverage, Premium Pro Rib Profile style, 29 gauge. ALWAYS stored inside. Meets all USA building material engineering codes for Tested Tolerances for wind & snow. USA stamped seal of approval documentation on all products. Notes: Loadout IS available with flexible appointments. Can also offer hardware, trim, corners at wholesale prices. Item Location: Monroe, NE 68647 Equipment Sold "AS IS, WHERE IS": All equipment/property is sold "AS IS, WHERE IS" with no warranty or guarantees, expressed or implied, No operational assessments or testing have been made by Del Peterson on this item, it has been photographed ONLY.



#385 - Metal Siding (DR-6617)

Metal Siding (DR-6617), NEW UNUSED (30) sheets, American made, White color, 16'-4" long X 36" overlap coverage, Premium Pro Rib Profile style, 29 gauge. ALWAYS stored inside. Meets all USA building material engineering codes for Tested Tolerances for wind & snow. USA stamped seal of approval documentation on all products. Notes: Loadout IS available with flexible appointments. Can also offer hardware, trim, corners at wholesale prices. Item Location: Monroe, NE 68647 Equipment Sold "AS IS, WHERE IS": All equipment/property is sold "AS IS, WHERE IS" with no warranty or guarantees, expressed or implied, No operational assessments or testing have been made by Del Peterson on this item, it has been photographed ONLY.



#386 - Metal Siding (DR-6618)

Metal Siding (DR-6618), NEW UNUSED (30) sheets, American made, Green color, 16' long X 36" overlap coverage, Premium Pro Rib Profile style, 29 gauge. ALWAYS stored inside. Meets all USA building material engineering codes for Tested Tolerances for wind & snow. USA stamped seal of approval documentation on all products. Notes: Loadout IS available with flexible appointments. Can also offer hardware, trim, corners at wholesale prices. Item Location: Monroe, NE 68647 Equipment Sold "AS IS, WHERE IS": All equipment/property is sold "AS IS, WHERE IS" with no warranty or guarantees, expressed or implied, No operational assessments or testing have been made by Del Peterson on this item, it has been photographed ONLY.



#387 - Metal Siding (DR-6619)

Metal Siding (DR-6619), NEW UNUSED (30) sheets, American made, Green color, 16' long X 36" overlap coverage, Premium Pro Rib Profile style, 29 gauge. ALWAYS stored inside. Meets all USA building material engineering codes for Tested Tolerances for wind & snow. USA stamped seal of approval documentation on all products. Notes: Loadout IS available with flexible appointments. Can also offer hardware, trim, corners at wholesale prices. Item Location: Monroe, NE 68647 Equipment Sold "AS IS, WHERE IS": All equipment/property is sold "AS IS, WHERE IS" with no warranty or guarantees, expressed or implied, No operational assessments or testing have been made by Del Peterson on this item, it has been photographed ONLY.



#388 - Metal Siding (DR-6620)

Metal Siding (DR-6620), NEW UNUSED (30) sheets, American made, Green color, 16' long X 36" overlap coverage, Premium Pro Rib Profile style, 29 gauge. ALWAYS stored inside. Meets all USA building material engineering codes for Tested Tolerances for wind & snow. USA stamped seal of approval documentation on all products. Notes: Loadout IS available with flexible appointments. Can also offer hardware, trim, corners at wholesale prices. Item Location: Monroe, NE 68647 Equipment Sold "AS IS, WHERE IS": All equipment/property is sold "AS IS, WHERE IS" with no warranty or guarantees, expressed or implied, No operational assessments or testing have been made by Del Peterson on this item, it has been photographed ONLY.



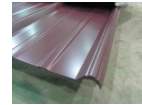
#389 - Metal Siding (DR-6621)

Metal Siding (DR-6621), NEW UNUSED (30) sheets, American made, Green color, 16' long X 36" overlap coverage, Premium Pro Rib Profile style, 29 gauge. ALWAYS stored inside. Meets all USA building material engineering codes for Tested Tolerances for wind & snow. USA stamped seal of approval documentation on all products. Notes: Loadout IS available with flexible appointments. Can also offer hardware, trim, corners at wholesale prices. Item Location: Monroe, NE 68647 Equipment Sold "AS IS, WHERE IS": All equipment/property is sold "AS IS, WHERE IS" with no warranty or guarantees, expressed or implied, No operational assessments or testing have been made by Del Peterson on this item, it has been photographed ONLY.



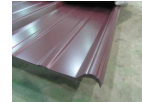
#390 - Metal Siding (DR-6622)

Metal Siding (DR-6622), NEW UNUSED (30) sheets, American made, Burgandy color, 16' long X 36" overlap coverage, Premium Pro Rib Profile style, 29 gauge. ALWAYS stored inside. Meets all USA building material engineering codes for Tested Tolerances for wind & snow. USA stamped seal of approval documentation on all products. Notes: Loadout IS available with flexible appointments. Can also offer hardware, trim, corners at wholesale prices. Item Location: Monroe, NE 68647 Equipment Sold "AS IS, WHERE IS": All equipment/property is sold "AS IS, WHERE IS" with no warranty or guarantees, expressed or implied, No operational assessments or testing have been made by Del Peterson on this item, it has been photographed ONLY.



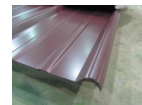
#391 - Metal Siding (DR-6623)

Metal Siding (DR-6623), NEW UNUSED (30) sheets, American made, Burgandy color, 16' long X 36" overlap coverage, Premium Pro Rib Profile style, 29 gauge. ALWAYS stored inside. Meets all USA building material engineering codes for Tested Tolerances for wind & snow. USA stamped seal of approval documentation on all products. Notes: Loadout IS available with flexible appointments. Can also offer hardware, trim, corners at wholesale prices. Item Location: Monroe, NE 68647 Equipment Sold "AS IS, WHERE IS": All equipment/property is sold "AS IS, WHERE IS" with no warranty or guarantees, expressed or implied, No operational assessments or testing have been made by Del Peterson on this item, it has been photographed ONLY.



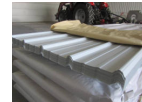
#392 - Metal Siding (DR-6624)

Metal Siding (DR-6624), NEW UNUSED (30) sheets, American made, Burgandy color, 16' long X 36" overlap coverage, Premium Pro Rib Profile style, 29 gauge. ALWAYS stored inside. Meets all USA building material engineering codes for Tested Tolerances for wind & snow. USA stamped seal of approval documentation on all products. Notes: Loadout IS available with flexible appointments. Can also offer hardware, trim, corners at wholesale prices. Item Location: Monroe, NE 68647 Equipment Sold "AS IS, WHERE IS": All equipment/property is sold "AS IS, WHERE IS" with no warranty or guarantees, expressed or implied, No operational assessments or testing have been made by Del Peterson on this item, it has been photographed ONLY.



#393 - Metal Siding (DR-6625)

Metal Siding (DR-6625), NEW UNUSED (70) sheets, American made, White color, 10' long X 36" overlap coverage, Premium Pro Rib Profile style, 29 gauge. ALWAYS stored inside. Meets all USA building material engineering codes for Tested Tolerances for wind & snow. USA stamped seal of approval documentation on all products. Notes: Loadout IS available with flexible appointments. Can also offer hardware, trim, corners at wholesale prices. Item Location: Monroe, NE 68647 Equipment Sold "AS IS, WHERE IS": All equipment/property is sold "AS IS, WHERE IS" with no warranty or guarantees, expressed or implied, No operational assessments or testing have been made by Del Peterson on this item, it has been photographed ONLY.



#394 - Metal Siding (DR-6626)

Metal Siding (DR-6626), NEW UNUSED (70) sheets, American made, White color, 10' long X 36" overlap coverage, Premium Pro Rib Profile style, 29 gauge. ALWAYS stored inside. Meets all USA building material engineering codes for Tested Tolerances for wind & snow. USA stamped seal of approval documentation on all products. Notes: Loadout IS available with flexible appointments. Can also offer hardware, trim, corners at wholesale prices. Item Location: Monroe, NE 68647 Equipment Sold "AS IS, WHERE IS": All equipment/property is sold "AS IS, WHERE IS" with no warranty or guarantees, expressed or implied, No operational assessments or testing have been made by Del Peterson on this item, it has been photographed ONLY.



#395 - Metal Siding (DR-6627)

Metal Siding (DR-6627), NEW UNUSED (70) sheets, American made, White color, 10' long X 36" overlap coverage, Premium Pro Rib Profile style, 29 gauge. ALWAYS stored inside. Meets all USA building material engineering codes for Tested Tolerances for wind & snow. USA stamped seal of approval documentation on all products. Notes: Loadout IS available with flexible appointments. Can also offer hardware, trim, corners at wholesale prices. Item Location: Monroe, NE 68647 Equipment Sold "AS IS, WHERE IS": All equipment/property is sold "AS IS, WHERE IS" with no warranty or guarantees, expressed or implied, No operational assessments or testing have been made by Del Peterson on this item, it has been photographed ONLY.



#396 - Metal Siding (DR-6628)

Metal Siding (DR-6628), NEW UNUSED (70) sheets, American made, White color, 10' long X 36" overlap coverage, Premium Pro Rib Profile style, 29 gauge. ALWAYS stored inside. Meets all USA building material engineering codes for Tested Tolerances for wind & snow. USA stamped seal of approval documentation on all products. Notes: Loadout IS available with flexible appointments. Can also offer hardware, trim, corners at wholesale prices. Item Location: Monroe, NE 68647 Equipment Sold "AS IS, WHERE IS": All equipment/property is sold "AS IS, WHERE IS" with no warranty or guarantees, expressed or implied, No operational assessments or testing have been made by Del Peterson on this item, it has been photographed ONLY.



#399 - Thermo King Super - II TCI (KMK270)

Thermo King Super - II TCI (KMK270), model no., SII 30 TCI- 2, B/M no. 092139, ref R502- 19 lbs, shows 15,118 hours. Notes: Unit was working when removed. Item Location: Waterloo, IA 50701 Equipment Sold "AS IS, WHERE IS": All equipment/property is sold "AS IS, WHERE IS" with no warranty or guarantees, expressed or implied, No operational assessments or testing have been made by Del Peterson on this item, it has been photographed ONLY.

