

Auction catalog

Title	Online Auction October 24, 2017 10AM Central
Description	The following line of Fertilizer, Farm Implement, Truck, Trailer & Construction Equipment will be sold online with the bidding ending on October 24, 2017. Location of the equipment is given. Bidding within the last minute before the closing of a lot will extend the bidding time by an additional minute. Be prepared to bid accordingly. For more information, contact Del Peterson & Associates: 419 West Judy Drive Fremont NE, 68025 Phone: 800-492-9090 or 402-721-4388 Fax: 402-721-4583 E-mail: auction@delpeterson.com
Date	Tue, Oct 24, 2017
Starts at	10:00 AM
Address	PO Box 654, Fremont, NE 68026 USA
Categories	

#3 - Corken Pumps (NJP440)

Corken Pumps (NJP440), (2) Corken pumps, Corken pump repair kit. Notes: Item Location: Elk Mound, WI 54739 Equipment Sold "AS IS, WHERE IS": All equipment/property is sold "AS IS, WHERE IS" with no warranty or guarantees, expressed or implied, No operational assessments have been made by DPA Auctions on this item, it has been photographed ONLY.



#5 - Brandex Fiberglass Topper (NJP445)

Brandex Fiberglass Topper (NJP445), 8' fiberglass topper, side access doors, top ladder rack., fits Chevrolet box ONLY. Notes: Item Location: Elk Mound, WI 54739 Equipment Sold "AS IS, WHERE IS": All equipment/property is sold "AS IS, WHERE IS" with no warranty or guarantees, expressed or implied, No operational assessments have been made by DPA Auctions on this item, it has been photographed ONLY.



#6 - Waconia U Trough Auger (PZ7555)

Waconia U Trough Auger (PZ7555), Waconia approx. 50' stainless steel u trough auger, Dodge drive, approx 48' stainless steel u trough auger. Notes: Item Location: Alexander, IA 50420 Equipment Sold "AS IS, WHERE IS": All equipment/property is sold "AS IS, WHERE IS" with no warranty or guarantees, expressed or implied, No operational assessments have been made by DPA Auctions on this item, it has been photographed ONLY.



#7 - Receiving Conveyor (PZ7556)

Receiving Conveyor (PZ7556), Approx. 55'6" stainless steel receiving conveyor, Dodge drive. Notes: Item Location: Alexander, IA 50420 Equipment Sold "AS IS, WHERE IS": All equipment/property is sold "AS IS, WHERE IS" with no warranty or guarantees, expressed or implied, No operational assessments have been made by DPA Auctions on this item, it has been photographed ONLY.



#8 - Pallet NH3 Parts (PZ7534)

Pallet NH3 Parts (PZ7534), Pallet NH3 knives & shanks. Notes: Item Location: Elm Creek, NE 68836 Equipment Sold "AS IS, WHERE IS": All equipment/property is sold "AS IS, WHERE IS" with no warranty or guarantees, expressed or implied, No operational assessments have been made by DPA Auctions on this item, it has been photographed ONLY.



#9 - Pallet NH3 Parts (PZ7535)

Pallet NH3 Parts (PZ7535), Pallet NH3 knives & shanks. Notes: Item Location: Elm Creek, NE 68836 Equipment Sold "AS IS, WHERE IS": All equipment/property is sold "AS IS, WHERE IS" with no warranty or guarantees, expressed or implied, No operational assessments have been made by DPA Auctions on this item, it has been photographed ONLY.



#10 - Pallet NH3 Parts (PZ7536)

Pallet NH3 Parts (PZ7536), Pallet NH3 knives. Notes: Item Location: Elm Creek, NE 68836 Equipment Sold "AS IS, WHERE IS": All equipment/property is sold "AS IS, WHERE IS" with no warranty or guarantees, expressed or implied, No operational assessments have been made by DPA Auctions on this item, it has been photographed ONLY.



#11 - Pallet NH3 Hose (PZ7538)

Pallet NH3 Hose (PZ7538), Pallet NH3 hose. Notes: Item Location: Elm Creek, NE 68836 Equipment Sold "AS IS, WHERE IS": All equipment/property is sold "AS IS, WHERE IS" with no warranty or guarantees, expressed or implied, No operational assessments have been made by DPA Auctions on this item, it has been photographed ONLY.



#12 - N Serve Pump (PZ7537)

N Serve Pump (PZ7537), N Serve pump, Reliance 1/3 hp motor. Notes: Item Location: Elm Creek, NE 68836 Equipment Sold "AS IS, WHERE IS": All equipment/property is sold "AS IS, WHERE IS" with no warranty or guarantees, expressed or implied, No operational assessments have been made by DPA Auctions on this item, it has been photographed ONLY.



#13 - Tyler Dry Spreader (DR7366)

Tyler Dry Spreader (DR7366), 8 ton stainless steel dry spreader, ground drive web chain, PTO drive rear spinner, 16.1-16.5 tires. Notes: Item Location: Springfield, MN 56087 Equipment Sold "AS IS, WHERE IS": All equipment/property is sold "AS IS, WHERE IS" with no warranty or guarantees, expressed or implied, No operational assessments have been made by DPA Auctions on this item, it has been photographed ONLY.



#16 - NH3 Nurse Tank (PZ7475, Unit 42)

NH3 Nurse Tank (PZ7475, Unit 42), 1000 gallon NH3 nurse tank, top front fill, 5th wheel gear, 30" row, 11L-15 flotation tires, water tank, data plate. Notes: Item Location: Elm Creek, NE 68836 Equipment Sold "AS IS, WHERE IS": All equipment/property is sold "AS IS, WHERE IS" with no warranty or guarantees, expressed or implied, No operational assessments have been made by DPA Auctions on this item, it has been photographed ONLY.



#17 - NH3 Nurse Tank (PZ7476, Unit 43)

NH3 Nurse Tank (PZ7476, Unit 43), 1000 gallon NH3 nurse tank, top front fill, 5th wheel gear, 30" row, 11L-15 flotation tires, data plate. Notes: Item Location: Elm Creek, NE 68836 Equipment Sold "AS IS, WHERE IS": All equipment/property is sold "AS IS, WHERE IS" with no warranty or guarantees, expressed or implied, No operational assessments have been made by DPA Auctions on this item, it has been photographed ONLY.



#18 - NH3 Nurse Tank (PZ7477, Unit 12)

NH3 Nurse Tank (PZ7477, Unit 12), 1000 gallon NH3 nurse tank, front fill, 5th wheel gear, 40" row, 11L-15 flotation tires, water tank, data plate, U-1-A report. Notes: Item Location: Elm Creek, NE 68836 Equipment Sold "AS IS, WHERE IS": All equipment/property is sold "AS IS, WHERE IS" with no warranty or guarantees, expressed or implied, No operational assessments have been made by DPA Auctions on this item, it has been photographed ONLY.



#19 - NH3 Nurse Tank (PZ7478, Unit 19)

NH3 Nurse Tank (PZ7478, Unit 19), 1000 gallon NH3 nurse tank, front fill, 5th wheel gear, 40" row, 11L-15 flotation tires, water tank, data plate, U-1-A report. Notes: Item Location: Elm Creek, NE 68836 Equipment Sold "AS IS, WHERE IS": All equipment/property is sold "AS IS, WHERE IS" with no warranty or guarantees, expressed or implied, No operational assessments have been made by DPA Auctions on this item, it has been photographed ONLY.



#20 - NH3 Nurse Tank (PZ7479, Unit 30)

NH3 Nurse Tank (PZ7479, Unit 30), 1000 gallon NH3 nurse tank, front fill, 5th wheel gear, 36" row, 11L-15 flotation tires, water tank, data plate, U-1-A report. Notes: Item Location: Elm Creek, NE 68836 Equipment Sold "AS IS, WHERE IS": All equipment/property is sold "AS IS, WHERE IS" with no warranty or guarantees, expressed or implied, No operational assessments have been made by DPA Auctions on this item, it has been photographed ONLY.



#21 - NH3 Nurse Tank (PZ7480, Unit 13)

NH3 Nurse Tank (PZ7480, Unit 13), 1000 gallon NH3 nurse tank, front fill, 5th wheel gear, 36" row, 11L-15 flotation tires, water tank, data plate, U-1-A report. Notes: Item Location: Elm Creek, NE 68836 Equipment Sold "AS IS, WHERE IS": All equipment/property is sold "AS IS, WHERE IS" with no warranty or guarantees, expressed or implied, No operational assessments have been made by DPA Auctions on this item, it has been photographed ONLY.



#22 - NH3 Nurse Tank (PZ7481, Unit 6)

NH3 Nurse Tank (PZ7481, Unit 6), 1000 gallon NH3 nurse tank, front fill, 5th wheel gear, 30" row, 11L-15 flotation tires, water tank, data plate, U-1-A report. Notes: Item Location: Elm Creek, NE 68836 Equipment Sold "AS IS, WHERE IS": All equipment/property is sold "AS IS, WHERE IS" with no warranty or guarantees, expressed or implied, No operational assessments have been made by DPA Auctions on this item, it has been photographed ONLY.



#23 - NH3 Nurse Tank (PZ7482, Unit 1)

NH3 Nurse Tank (PZ7482, Unit 1), 1000 gallon NH3 nurse tank, front fill, 5th wheel gear, 30" row, 11L-15 flotation tires, water tank, data plate, U-1-A report. Notes: Item Location: Elm Creek, NE 68836 Equipment Sold "AS IS, WHERE IS": All equipment/property is sold "AS IS, WHERE IS" with no warranty or guarantees, expressed or implied, No operational assessments have been made by DPA Auctions on this item, it has been photographed ONLY.



#24 - NH3 Nurse Tank (PZ7483, Unit 7)

NH3 Nurse Tank (PZ7483, Unit 7), 1000 gallon NH3 nurse tank, front fill, 5th wheel gear, 30" row, 11L-15 flotation tires, water tank, data plate, U-1-A report. Notes: Item Location: Elm Creek, NE 68836 Equipment Sold "AS IS, WHERE IS": All equipment/property is sold "AS IS, WHERE IS" with no warranty or guarantees, expressed or implied, No operational assessments have been made by DPA Auctions on this item, it has been photographed ONLY.



#25 - NH3 Nurse Tank (PZ7484, Unit 20)

NH3 Nurse Tank (PZ7484, Unit 20), 1000 gallon NH3 nurse tank, front fill, 5th wheel gear, 36" row, 11L-15 flotation tires, water tank, data plate, U-1-A report. Notes: Item Location: Elm Creek, NE 68836 Equipment Sold "AS IS, WHERE IS": All equipment/property is sold "AS IS, WHERE IS" with no warranty or guarantees, expressed or implied, No operational assessments have been made by DPA Auctions on this item, it has been photographed ONLY.



#26 - NH3 Nurse Tank (PZ7485, Unit 17)

NH3 Nurse Tank (PZ7485, Unit 17), 1000 gallon NH3 nurse tank, front fill, 5th wheel gear, 36" row, 11L-15 flotation tires, water tank, data plate, U-1-A report. Notes: Item Location: Elm Creek, NE 68836 Equipment Sold "AS IS, WHERE IS": All equipment/property is sold "AS IS, WHERE IS" with no warranty or guarantees, expressed or implied, No operational assessments have been made by DPA Auctions on this item, it has been photographed ONLY.



#27 - NH3 Nurse Tank (PZ7486, Unit 23)

NH3 Nurse Tank (PZ7486, Unit 23), 1000 gallon NH3 nurse tank, front fill, 5th wheel gear, 36" row, 11L-15 flotation tires, water tank, data plate, U-1-A report. Notes: Item Location: Elm Creek, NE 68836 Equipment Sold "AS IS, WHERE IS": All equipment/property is sold "AS IS, WHERE IS" with no warranty or guarantees, expressed or implied, No operational assessments have been made by DPA Auctions on this item, it has been photographed ONLY.



#28 - NH3 Nurse Tank (PZ7487, Unit 24)

NH3 Nurse Tank (PZ7487, Unit 24), 1000 gallon NH3 nurse tank, front fill, 5th wheel gear, 40" row, 11L-15 flotation tires, water tank, data plate, U-1-A report. Notes: Item Location: Elm Creek, NE 68836 Equipment Sold "AS IS, WHERE IS": All equipment/property is sold "AS IS, WHERE IS" with no warranty or guarantees, expressed or implied, No operational assessments have been made by DPA Auctions on this item, it has been photographed ONLY.



#29 - NH3 Nurse Tank (PZ7488, Unit 46)

NH3 Nurse Tank (PZ7488, Unit 46), 1000 gallon NH3 nurse tank, front fill, 5th wheel gear, 40" row, 11L-15 flotation tires, water tank, data plate. Notes: Item Location: Elm Creek, NE 68836 Equipment Sold "AS IS, WHERE IS": All equipment/property is sold "AS IS, WHERE IS" with no warranty or guarantees, expressed or implied, No operational assessments have been made by DPA Auctions on this item, it has been photographed ONLY.



#30 - NH3 Nurse Tank (PZ7489, Unit 34)

NH3 Nurse Tank (PZ7489, Unit 34), 1000 gallon NH3 nurse tank, front fill, 5th wheel gear, 36" row, 11L-15 flotation tires, water tank, data plate, U-1-A report. Notes: Item Location: Elm Creek, NE 68836 Equipment Sold "AS IS, WHERE IS": All equipment/property is sold "AS IS, WHERE IS" with no warranty or guarantees, expressed or implied, No operational assessments have been made by DPA Auctions on this item, it has been photographed ONLY.



#31 - NH3 Nurse Tank (PZ7490, Unit 26)

NH3 Nurse Tank (PZ7490, Unit 26), 1000 gallon NH3 nurse tank, front fill, 5th wheel gear, 36" row, 11L-15 flotation tires, water tank, data plate, U-1-A report. Notes: Item Location: Elm Creek, NE 68836 Equipment Sold "AS IS, WHERE IS": All equipment/property is sold "AS IS, WHERE IS" with no warranty or guarantees, expressed or implied, No operational assessments have been made by DPA Auctions on this item, it has been photographed ONLY.



#32 - NH3 Nurse Tank (PZ7491, Unit 14)

NH3 Nurse Tank (PZ7491, Unit 14), 1000 gallon NH3 nurse tank, front fill, 5th wheel gear, 36" row, 11L-15 flotation tires, data plate, U-1-A report. Notes: Item Location: Elm Creek, NE 68836 Equipment Sold "AS IS, WHERE IS": All equipment/property is sold "AS IS, WHERE IS" with no warranty or guarantees, expressed or implied, No operational assessments have been made by DPA Auctions on this item, it has been photographed ONLY.



#33 - NH3 Nurse Tank (PZ7492, Unit 11)

NH3 Nurse Tank (PZ7492, Unit 11), 1000 gallon NH3 nurse tank, front fill, 5th wheel gear, 36" row, 11L-15 flotation tires, water tank, data plate, U-1-A report. Notes: Item Location: Elm Creek, NE 68836 Equipment Sold "AS IS, WHERE IS": All equipment/property is sold "AS IS, WHERE IS" with no warranty or guarantees, expressed or implied, No operational assessments have been made by DPA Auctions on this item, it has been photographed ONLY.



#34 - NH3 Nurse Tank (PZ7493, Unit 44)

NH3 Nurse Tank (PZ7493, Unit 44), 1000 gallon NH3 nurse tank, front fill, 5th wheel gear, 36" row, 11L-15 flotation tires, water tank, data plate, U-1-A report. Notes: Item Location: Elm Creek, NE 68836 Equipment Sold "AS IS, WHERE IS": All equipment/property is sold "AS IS, WHERE IS" with no warranty or guarantees, expressed or implied, No operational assessments have been made by DPA Auctions on this item, it has been photographed ONLY.



#35 - 1970 Trinity NH3 Storage Tank (PZ7540)

1970 Trinity NH3 Storage Tank (PZ7540), 1970 Trinity 18,000 gallon NH3 storage tank on skids, tank volume gauge, data plate, tank & valve. Notes: This tank must be removed by December 31, 2017 with no exceptions. Dismantle, removal and transportation is at the expense, risk and liability of the buyer. Item Location: Elm Creek, NE 68836 Equipment Sold "AS IS, WHERE IS": All equipment/property is sold "AS IS, WHERE IS" with no warranty or guarantees, expressed or implied, No operational assessments have been made by DPA Auctions on this item, it has been photographed ONLY.



#36 - NH3 Nurse Tank (PZ7494, Unit 25)

NH3 Nurse Tank (PZ7494, Unit 25), 1000 gallon NH3 nurse tank, front fill, 5th wheel gear, 36" row, 11L-15 flotation tires, water tank, data plate, U-1-A report. Notes: Item Location: Elm Creek, NE 68836 Equipment Sold "AS IS, WHERE IS": All equipment/property is sold "AS IS, WHERE IS" with no warranty or guarantees, expressed or implied, No operational assessments have been made by DPA Auctions on this item, it has been photographed ONLY.



#37 - NH3 Nurse Tank (PZ7495, Unit 2)

NH3 Nurse Tank (PZ7495, Unit 2), 1000 gallon NH3 nurse tank, front fill, 5th wheel gear, 30" row, 11L-15 flotation tires, water tank, data plate, U-1-A report. Notes: Item Location: Elm Creek, NE 68836 Equipment Sold "AS IS, WHERE IS": All equipment/property is sold "AS IS, WHERE IS" with no warranty or guarantees, expressed or implied, No operational assessments have been made by DPA Auctions on this item, it has been photographed ONLY.



#38 - NH3 Nurse Tank (PZ7496, Unit 3)

NH3 Nurse Tank (PZ7496, Unit 3), 1000 gallon NH3 nurse tank, front fill, 5th wheel gear, 30" row, 11L-15 flotation tires, water tank, data plate, U-1-A report. Notes: Item Location: Elm Creek, NE 68836 Equipment Sold "AS IS, WHERE IS": All equipment/property is sold "AS IS, WHERE IS" with no warranty or guarantees, expressed or implied, No operational assessments have been made by DPA Auctions on this item, it has been photographed ONLY.



#39 - NH3 Nurse Tank (PZ7497, Unit 32)

NH3 Nurse Tank (PZ7497, Unit 32), 1000 gallon NH3 nurse tank, front fill, 5th wheel gear, 36" row, 11L-15 flotation tires, water tank, data plate, U-1-A report. Notes: Item Location: Elm Creek, NE 68836 Equipment Sold "AS IS, WHERE IS": All equipment/property is sold "AS IS, WHERE IS" with no warranty or guarantees, expressed or implied, No operational assessments have been made by DPA Auctions on this item, it has been photographed ONLY.



#40 - 2002 Chevrolet Cavalier (TR3900)

2002 Chevrolet Cavalier (TR3900), 2 door, gas engine, automatic transmission, power windows, power locks, AM/FM radio, CD, cruise control, power steering, tires @ 60%. 116,485 miles. Notes: Minor rest and dents. Item Location: Fremont, NE 68025 Equipment Sold "AS IS, WHERE IS": All equipment/property is sold "AS IS, WHERE IS" with no warranty or guarantees, expressed or implied, No operational assessments have been made by DPA Auctions on this item, it has been photographed ONLY.



#41 - NH3 Nurse Tank (PZ7498, Unit 10)

NH3 Nurse Tank (PZ7498, Unit 10), 1000 gallon NH3 nurse tank, front fill, 5th wheel gear, 36" row, 11L-15 flotation tires, water tank, data plate, U-1-A report. Notes: Item Location: Elm Creek, NE 68836 Equipment Sold "AS IS, WHERE IS": All equipment/property is sold "AS IS, WHERE IS" with no warranty or guarantees, expressed or implied, No operational assessments have been made by DPA Auctions on this item, it has been photographed ONLY.



#42 - NH3 Nurse Tank (PZ7499, Unit 27)

NH3 Nurse Tank (PZ7499, Unit 27), 1000 gallon NH3 nurse tank, front fill, 5th wheel gear, 36" row, 11L-15 flotation tires, water tank, data plate, U-1-A report. Notes: Item Location: Elm Creek, NE 68836 Equipment Sold "AS IS, WHERE IS": All equipment/property is sold "AS IS, WHERE IS" with no warranty or guarantees, expressed or implied, No operational assessments have been made by DPA Auctions on this item, it has been photographed ONLY.



#43 - NH3 Nurse Tank (PZ7500, Unit 22)

NH3 Nurse Tank (PZ7500, Unit 22), 1000 gallon NH3 nurse tank, front fill, 5th wheel gear, 36" row, 11L-15 flotation tires, water tank, data plate, U-1-A report. Notes: Item Location: Elm Creek, NE 68836 Equipment Sold "AS IS, WHERE IS": All equipment/property is sold "AS IS, WHERE IS" with no warranty or guarantees, expressed or implied, No operational assessments have been made by DPA Auctions on this item, it has been photographed ONLY.



#44 - NH3 Nurse Tank (PZ7501, Unit 31)

NH3 Nurse Tank (PZ7501, Unit 31), 1000 gallon NH3 nurse tank, front fill, 5th wheel gear, 40" row, 11L-15 flotation tires, water tank, data plate, U-1-A report. Notes: Item Location: Elm Creek, NE 68836 Equipment Sold "AS IS, WHERE IS": All equipment/property is sold "AS IS, WHERE IS" with no warranty or guarantees, expressed or implied, No operational assessments have been made by DPA Auctions on this item, it has been photographed ONLY.



#45 - NH3 Nurse Tank (PZ7502, Unit 29)

NH3 Nurse Tank (PZ7502, Unit 29), 1000 gallon NH3 nurse tank, front fill, 5th wheel gear, 40" row, 11L-15 flotation tires, water tank, data plate, U-1-A report. Notes: Item Location: Elm Creek, NE 68836 Equipment Sold "AS IS, WHERE IS": All equipment/property is sold "AS IS, WHERE IS" with no warranty or guarantees, expressed or implied, No operational assessments have been made by DPA Auctions on this item, it has been photographed ONLY.



#46 - NH3 Nurse Tank (PZ7503, Unit 4)

NH3 Nurse Tank (PZ7503, Unit 4), 1000 gallon NH3 nurse tank, front fill, 5th wheel gear, 30" row, 11L-15 flotation tires, water tank, data plate, U-1-A report. Notes: Item Location: Elm Creek, NE 68836 Equipment Sold "AS IS, WHERE IS": All equipment/property is sold "AS IS, WHERE IS" with no warranty or guarantees, expressed or implied, No operational assessments have been made by DPA Auctions on this item, it has been photographed ONLY.



#47 - NH3 Nurse Tank (PZ7504, Unit 5)

NH3 Nurse Tank (PZ7504, Unit 5), 1000 gallon NH3 nurse tank, front fill, 5th wheel gear, 30" row, 11L-15 flotation tires, water tank, data plate, U-1-A report. Notes: Item Location: Elm Creek, NE 68836 Equipment Sold "AS IS, WHERE IS": All equipment/property is sold "AS IS, WHERE IS" with no warranty or guarantees, expressed or implied, No operational assessments have been made by DPA Auctions on this item, it has been photographed ONLY.



#48 - NH3 Nurse Tank (PZ7505, Unit 18)

NH3 Nurse Tank (PZ7505, Unit 18), 1000 gallon NH3 nurse tank, front fill, 5th wheel gear, 40" row, 11L-15 flotation tires, water tank, data plate, U-1-A report. Notes: Item Location: Elm Creek, NE 68836 Equipment Sold "AS IS, WHERE IS": All equipment/property is sold "AS IS, WHERE IS" with no warranty or guarantees, expressed or implied, No operational assessments have been made by DPA Auctions on this item, it has been photographed ONLY.



#49 - NH3 Nurse Tank (PZ7506, Unit 28)

NH3 Nurse Tank (PZ7506, Unit 28), 1000 gallon NH3 nurse tank, front fill, 5th wheel gear, 40" row, 11L-15 flotation tires, water tank, data plate, U-1-A report. Notes: Item Location: Elm Creek, NE 68836 Equipment Sold "AS IS, WHERE IS": All equipment/property is sold "AS IS, WHERE IS" with no warranty or guarantees, expressed or implied, No operational assessments have been made by DPA Auctions on this item, it has been photographed ONLY.



#50 - NH3 Nurse Tank (PZ7507, Unit 21)

NH3 Nurse Tank (PZ7507, Unit 21), 1000 gallon NH3 nurse tank, front fill, 5th wheel gear, 36" row, 11L-15 flotation tires, water tank, data plate, U-1-A report. Notes: Item Location: Elm Creek, NE 68836 Equipment Sold "AS IS, WHERE IS": All equipment/property is sold "AS IS, WHERE IS" with no warranty or guarantees, expressed or implied, No operational assessments have been made by DPA Auctions on this item, it has been photographed ONLY.



#51 - 2008 Chevrolet Malibu LT (TR3901)

2008 Chevrolet Malibu LT (TR3901), 4 door, gas engine, automatic transmission, power windows, power locks, AM/FM radio, CD, sun roof, steering wheel controls, cruise control power steering, tires at 65%-70% 153,802 miles. Notes: SVC tire light is on. Item Location: Fremont, NE 68025 Equipment Sold "AS IS, WHERE IS": All equipment/property is sold "AS IS, WHERE IS" with no warranty or guarantees, expressed or implied, No operational assessments have been made by DPA Auctions on this item, it has been photographed ONLY.



#52 - NH3 Nurse Tank (PZ7508, Unit 16)

NH3 Nurse Tank (PZ7508, Unit 16), 1000 gallon NH3 nurse tank, front fill, 5th wheel gear, 36" row, 11L-15 flotation tires, water tank, data plate, U-1-A report. Notes: Item Location: Elm Creek, NE 68836 Equipment Sold "AS IS, WHERE IS": All equipment/property is sold "AS IS, WHERE IS" with no warranty or guarantees, expressed or implied, No operational assessments have been made by DPA Auctions on this item, it has been photographed ONLY.



#53 - NH3 Nurse Tank (PZ7509, Unit 15)

NH3 Nurse Tank (PZ7509, Unit 15), 1000 gallon NH3 nurse tank, front fill, 5th wheel gear, 40" row, 11L-15 flotation tires, water tank, data plate, U-1-A report. Notes: Item Location: Elm Creek, NE 68836 Equipment Sold "AS IS, WHERE IS": All equipment/property is sold "AS IS, WHERE IS" with no warranty or guarantees, expressed or implied, No operational assessments have been made by DPA Auctions on this item, it has been photographed ONLY.



#54 - NH3 Nurse Tank (PZ7510, Unit 47)

NH3 Nurse Tank (PZ7510, Unit 47), 1000 gallon NH3 nurse tank, front fill, 5th wheel gear, 40" row, 11L-15 flotation tires, water tank, data plate, U-1-A report. Notes: Item Location: Elm Creek, NE 68836 Equipment Sold "AS IS, WHERE IS": All equipment/property is sold "AS IS, WHERE IS" with no warranty or guarantees, expressed or implied, No operational assessments have been made by DPA Auctions on this item, it has been photographed ONLY.



#55 - NH3 Nurse Tank (PZ7511, Unit Willy)

NH3 Nurse Tank (PZ7511, Unit Willy), 1000 gallon NH3 nurse tank, front fill, 5th wheel gear, 40" row, 11L-15 flotation tires, data plate. Notes: Item Location: Elm Creek, NE 68836 Equipment Sold "AS IS, WHERE IS": All equipment/property is sold "AS IS, WHERE IS" with no warranty or guarantees, expressed or implied, No operational assessments have been made by DPA Auctions on this item, it has been photographed ONLY.



#56 - NH3 Nurse Tank (PZ7512, Unit 50)

NH3 Nurse Tank (PZ7512, Unit 50), 1000 gallon NH3 nurse tank, top front fill, 5th wheel gear, 40" row, 11L-15 flotation tires, water tank, data plate. Notes: Item Location: Elm Creek, NE 68836 Equipment Sold "AS IS, WHERE IS": All equipment/property is sold "AS IS, WHERE IS" with no warranty or guarantees, expressed or implied, No operational assessments have been made by DPA Auctions on this item, it has been photographed ONLY.



#57 - 1968 Semco NH3 Storage Tank (PZ7541)

1968 Semco NH3 Storage Tank (PZ7541), 1968 Semco 18,000 gallon NH3 storage tank on skids, Magnetel tank volume gauge, data plate, tank & valve, S/N A8552, Corken 490 compressor, 7 1/2 hp electric motor, NH3 loadouts. Notes: This tank must be removed by December 31, 2017 with no exceptions. Dismantle, removal and transportation is at the expense, risk and liability of the buyer. Item Location: Elm Creek, NE 68836 Equipment Sold "AS IS, WHERE IS": All equipment/property is sold "AS IS, WHERE IS" with no warranty or guarantees, expressed or implied, No operational assessments have been made by DPA Auctions on this item, it has been photographed ONLY.



#58 - NH3 Nurse Tank (PZ7513, Unit 48)

NH3 Nurse Tank (PZ7513, Unit 48), 1000 gallon NH3 nurse tank, top front fill, 5th wheel gear, 40" row, 11L-15 flotation tires, data plate. Notes: Item Location: Elm Creek, NE 68836 Equipment Sold "AS IS, WHERE IS": All equipment/property is sold "AS IS, WHERE IS" with no warranty or guarantees, expressed or implied, No operational assessments have been made by DPA Auctions on this item, it has been photographed ONLY.



#59 - NH3 Nurse Tank (PZ7514, Unit 52)

NH3 Nurse Tank (PZ7514, Unit 52), 1000 gallon NH3 nurse tank, top front fill, 5th wheel gear, 40" row, 11L-15 flotation tires, data plate. Notes: Item Location: Elm Creek, NE 68836 Equipment Sold "AS IS, WHERE IS": All equipment/property is sold "AS IS, WHERE IS" with no warranty or guarantees, expressed or implied, No operational assessments have been made by DPA Auctions on this item, it has been photographed ONLY.



#60 - NH3 Nurse Tank (PZ7515, Unit 58)

NH3 Nurse Tank (PZ7515, Unit 58), 1000 gallon NH3 nurse tank, top front fill, 5th wheel gear, 40" row, 11L-15 flotation tires, water tank, data plate. Notes: Item Location: Elm Creek, NE 68836 Equipment Sold "AS IS, WHERE IS": All equipment/property is sold "AS IS, WHERE IS" with no warranty or guarantees, expressed or implied, No operational assessments have been made by DPA Auctions on this item, it has been photographed ONLY.



#61 - NH3 Nurse Tank (PZ7516, Unit 53)

NH3 Nurse Tank (PZ7516, Unit 53), 1000 gallon NH3 nurse tank, top front fill, 5th wheel gear, 40" row, 11L-15 flotation tires, water tank, data plate. Notes: Item Location: Elm Creek, NE 68836 Equipment Sold "AS IS, WHERE IS": All equipment/property is sold "AS IS, WHERE IS" with no warranty or guarantees, expressed or implied, No operational assessments have been made by DPA Auctions on this item, it has been photographed ONLY.



#62 - 2008 Buick Lucerne CXL (TR3902)

2008 Buick Lucerne CXL (TR3902), 4 door, gas engine, automatic transmission, power windows, power locks, AM/FM radio, CD, sun roof, steering wheel controls, cruise control power steering, tires at 65%-70%, leather interior, power mirrors, power seats, 178,120 miles. Notes: Item Location: Fremont, NE 68025 Equipment Sold "AS IS, WHERE IS": All equipment/property is sold "AS IS, WHERE IS" with no warranty or guarantees, expressed or implied, No operational assessments have been made by DPA Auctions on this item, it has been photographed ONLY.



#63 - NH3 Nurse Tank (PZ7517, Unit 61)

NH3 Nurse Tank (PZ7517, Unit 61), 1000 gallon NH3 nurse tank, top front fill, 5th wheel gear, 40" row, 11L-15 flotation tires, water tank, data plate. Notes: Item Location: Elm Creek, NE 68836 Equipment Sold "AS IS, WHERE IS": All equipment/property is sold "AS IS, WHERE IS" with no warranty or guarantees, expressed or implied, No operational assessments have been made by DPA Auctions on this item, it has been photographed ONLY.



#64 - NH3 Nurse Tank (PZ7518, Unit 51)

NH3 Nurse Tank (PZ7518, Unit 51), 1000 gallon NH3 nurse tank, top front fill, 5th wheel gear, 40" row, 11L-15 flotation tires, data plate. Notes: Item Location: Elm Creek, NE 68836 Equipment Sold "AS IS, WHERE IS": All equipment/property is sold "AS IS, WHERE IS" with no warranty or guarantees, expressed or implied, No operational assessments have been made by DPA Auctions on this item, it has been photographed ONLY.



#65 - NH3 Nurse Tank (PZ7519, Unit 49)

NH3 Nurse Tank (PZ7519, Unit 49), 1000 gallon NH3 nurse tank, top front fill, 5th wheel gear, 40" row, 11L-15 flotation tires, data plate. Notes: Item Location: Elm Creek, NE 68836 Equipment Sold "AS IS, WHERE IS": All equipment/property is sold "AS IS, WHERE IS" with no warranty or guarantees, expressed or implied, No operational assessments have been made by DPA Auctions on this item, it has been photographed ONLY.



#66 - NH3 Nurse Tank (PZ7520, Unit 9)

NH3 Nurse Tank (PZ7520, Unit 9), 1000 gallon NH3 nurse tank, front fill, 5th wheel gear, 30" row, 11L-15 flotation tires, water tank, data plate, U-1-A report. Notes: Item Location: Elm Creek, NE 68836 Equipment Sold "AS IS, WHERE IS": All equipment/property is sold "AS IS, WHERE IS" with no warranty or guarantees, expressed or implied, No operational assessments have been made by DPA Auctions on this item, it has been photographed ONLY.



#67 - NH3 Nurse Tank (PZ7521, Unit 8)

NH3 Nurse Tank (PZ7521, Unit 8), 1000 gallon NH3 nurse tank, front fill, 5th wheel gear, 30" row, 11L-15 flotation tires, water tank, data plate, U-1-A report. Notes: Item Location: Elm Creek, NE 68836 Equipment Sold "AS IS, WHERE IS": All equipment/property is sold "AS IS, WHERE IS" with no warranty or guarantees, expressed or implied, No operational assessments have been made by DPA Auctions on this item, it has been photographed ONLY.



#68 - NH3 Nurse Tank (PZ7522, Unit 41)

NH3 Nurse Tank (PZ7522, Unit 41), 1000 gallon NH3 nurse tank, top front fill, 5th wheel gear, 30" row, 11L-15 flotation tires, water tank, data plate. Notes: Item Location: Elm Creek, NE 68836 Equipment Sold "AS IS, WHERE IS": All equipment/property is sold "AS IS, WHERE IS" with no warranty or guarantees, expressed or implied, No operational assessments have been made by DPA Auctions on this item, it has been photographed ONLY.



#69 - NH3 Nurse Tank (PZ7523, Unit 35)

NH3 Nurse Tank (PZ7523, Unit 35), 1000 gallon NH3 nurse tank, top front fill, 5th wheel gear, 30" row, 11L-15 flotation tires, data plate. Notes: Item Location: Elm Creek, NE 68836 Equipment Sold "AS IS, WHERE IS": All equipment/property is sold "AS IS, WHERE IS" with no warranty or guarantees, expressed or implied, No operational assessments have been made by DPA Auctions on this item, it has been photographed ONLY.



#70 - NH3 Nurse Tank (PZ7524, Unit 000)

NH3 Nurse Tank (PZ7524, Unit 000), 1000 gallon NH3 nurse tank, center fill, 5th wheel gear, 30" row, 11L-15 flotation tires, Notes: Item Location: Elm Creek, NE 68836 Equipment Sold "AS IS, WHERE IS": All equipment/property is sold "AS IS, WHERE IS" with no warranty or guarantees, expressed or implied, No operational assessments have been made by DPA Auctions on this item, it has been photographed ONLY.



#71 - NH3 Nurse Tank (PZ7525, Unit 00)

NH3 Nurse Tank (PZ7525, Unit 00), 1000 gallon NH3 nurse tank, top front fill, 5th wheel gear, 30" row, 11L-15 flotation tires, water tank, data plate. Notes: Item Location: Elm Creek, NE 68836 Equipment Sold "AS IS, WHERE IS": All equipment/property is sold "AS IS, WHERE IS" with no warranty or guarantees, expressed or implied, No operational assessments have been made by DPA Auctions on this item, it has been photographed ONLY.



#72 - NH3 Nurse Tank (PZ7526, Unit 45)

NH3 Nurse Tank (PZ7526, Unit 45), 1000 gallon NH3 nurse tank, top front fill, 5th wheel gear, 30" row, 11L-15 flotation tires, water tank, data plate. Notes: Item Location: Elm Creek, NE 68836 Equipment Sold "AS IS, WHERE IS": All equipment/property is sold "AS IS, WHERE IS" with no warranty or guarantees, expressed or implied, No operational assessments have been made by DPA Auctions on this item, it has been photographed ONLY.



#73 - 2010 GMC Yukon XL SLT (TR3903)

2010 GMC Yukon XL SLT (TR3903), 4 door, gas engine, automatic transmission, power windows, power locks, AM/FM radio, CD, sun roof, steering wheel controls, cruise control power steering, tires at 65%, leather interior, power mirrors, power seats, rear DVD, rear climate controls, 3rd row seating, heated front and rear seats, luggage rack, 129925 miles. Notes: Item Location: Fremont, NE 68025 Equipment Sold "AS IS, WHERE IS": All equipment/property is sold "AS IS, WHERE IS" with no warranty or guarantees, expressed or implied, No operational assessments have been made by DPA Auctions on this item, it has been photographed ONLY.



#74 - NH3 Nurse Tank (PZ7527, Unit 40)

NH3 Nurse Tank (PZ7527, Unit 40), 1000 gallon NH3 nurse tank, top front fill, 5th wheel gear, 30" row, 11L-15 flotation tires, water tank, data plate. Notes: Item Location: Elm Creek, NE 68836 Equipment Sold "AS IS, WHERE IS": All equipment/property is sold "AS IS, WHERE IS" with no warranty or guarantees, expressed or implied, No operational assessments have been made by DPA Auctions on this item, it has been photographed ONLY.



#75 - NH3 Nurse Tank (PZ7528, Unit 35)

NH3 Nurse Tank (PZ7528, Unit 35), 1000 gallon NH3 nurse tank, top front fill, 5th wheel gear, 36" row, 11L-15 flotation tires, water tank, data plate. Notes: Item Location: Elm Creek, NE 68836 Equipment Sold "AS IS, WHERE IS": All equipment/property is sold "AS IS, WHERE IS" with no warranty or guarantees, expressed or implied, No operational assessments have been made by DPA Auctions on this item, it has been photographed ONLY.



#76 - NH3 Nurse Tank (PZ7529, Unit 36)

NH3 Nurse Tank (PZ7529, Unit 36), 1000 gallon NH3 nurse tank, top front fill, 5th wheel gear, 36" row, 11L-15 flotation tires, water tank, data plate. Notes: Item Location: Elm Creek, NE 68836 Equipment Sold "AS IS, WHERE IS": All equipment/property is sold "AS IS, WHERE IS" with no warranty or guarantees, expressed or implied, No operational assessments have been made by DPA Auctions on this item, it has been photographed ONLY.



#77 - NH3 Nurse Tank (PZ7532)

NH3 Nurse Tank (PZ7532), 500 gallon NH3 nurse tank, front fill, 3 wheel gear, data plate. Notes: Item Location: Elm Creek, NE 68836 Equipment Sold "AS IS, WHERE IS": All equipment/property is sold "AS IS, WHERE IS" with no warranty or guarantees, expressed or implied, No operational assessments have been made by DPA Auctions on this item, it has been photographed ONLY.



#78 - NH3 Nurse Tank (PZ7533)

NH3 Nurse Tank (PZ7533), 500 gallon NH3 nurse tank, front fill, 3 wheel gear, data plate. Notes: Item Location: Elm Creek, NE 68836 Equipment Sold "AS IS, WHERE IS": All equipment/property is sold "AS IS, WHERE IS" with no warranty or guarantees, expressed or implied, No operational assessments have been made by DPA Auctions on this item, it has been photographed ONLY.



#79 - 1952 Bethlehem Steel Co. NH3 Storage Tank (PZ7539)

1952 Bethlehem Steel Co. NH3 Storage Tank (PZ7539), 1952 Bethlehem Steel Co. 30,000 gallon NH3 storage tank, Master tank volume gauge, data plate, tank & valve, National Board. Notes: This tank must be removed by December 31, 2017 with no exceptions. Dismantle, removal and transportation is at the expense, risk and liability of the buyer. Item Location: Elm Creek, NE 68836 Equipment Sold "AS IS, WHERE IS": All equipment/property is sold "AS IS, WHERE IS" with no warranty or guarantees, expressed or implied, No operational assessments have been made by DPA Auctions on this item, it has been photographed ONLY.



#80 - 2011 Massey Ferguson 8680 MFWD Tractor (PZ7549)

2011 Massey Ferguson 8680 MFWD Tractor (PZ7549), Agco Sisu diesel engine, CVT transmission, air conditioning, heat, Am/Fm CD stereo, 22 front weights, PTO, 5 port hydraulics, drawbar, quick hitch, Michelin 540/65R39 front tires, Michelin 520/85R46 rear dual tires, shows 1847 hours. Notes: PLEASE NOTE: Wells Fargo Will not release this equipment until your check clears your bank or you wire transfer fund. Item Location: Hoxie, AR 72433 Equipment Sold "AS IS, WHERE IS": All equipment/property is sold "AS IS, WHERE IS" with no warranty or guarantees, expressed or implied, No operational assessments have been made by DPA Auctions on this item, it has been photographed ONLY.



#81 - 2006 CaseIH FLX4010 Dry Floater (DR7350, Unit 00088)

2006 CaseIH FLX4010 Dry Floater (DR7350, Unit 00088), diesel engine, Allison automatic transmission, air conditioning, heat, Am/Fm cassette radio, New Leader L3020 G4 stainless steel dry spreader box, twin spinner, all hydraulic, Alliance 750/45R26.5 front tires, PrimeX VA73X44.00-32 rear tires, lightbar, Raven monitor, shows 5398 hours. Notes: Item Location: Galesburg, IL 61401 Equipment Sold "AS IS, WHERE IS": All equipment/property is sold "AS IS, WHERE IS" with no warranty or guarantees, expressed or implied, No operational assessments have been made by DPA Auctions on this item, it has been photographed ONLY.



#82 - Doyle Dry Conveyor (DR7351)

Doyle Dry Conveyor (DR7351), Doyle stainless steel dry conveyor, Kubota diesel engine, portable, conveyor wheel assist, ST205/75R15 tires. Notes: Item Location: Galesburg, IL 61401 Equipment Sold "AS IS, WHERE IS": All equipment/property is sold "AS IS, WHERE IS" with no warranty or guarantees, expressed or implied, No operational assessments have been made by DPA Auctions on this item, it has been photographed ONLY.



#83 - Doyle Dry Conveyor (DR7352)

Doyle Dry Conveyor (DR7352), Doyle stainless steel dry conveyor, Honda GX630 electric start gas engine, portable, conveyor wheel assist, ST205/75R15 tires, shows 61 hours. Notes: Item Location: Galesburg, IL 61401 Equipment Sold "AS IS, WHERE IS": All equipment/property is sold "AS IS, WHERE IS" with no warranty or guarantees, expressed or implied, No operational assessments have been made by DPA Auctions on this item, it has been photographed ONLY.



#84 - 2002 GMC Yukon XL SLT (TR3904)

2002 GMC Yukon XL SLT (TR3904), 4 door, gas engine, automatic transmission, power windows, power locks, AM/FM radio, CD, sun roof, steering wheel controls, cruise control power steering, tires at 60%-65%, leather interior, power mirrors, power seats, Cassette, rear controls, heated seats, 3rd row, 208,828 miles. Notes: Item Location: Fremont, NE 68025 Equipment Sold "AS IS, WHERE IS": All equipment/property is sold "AS IS, WHERE IS" with no warranty or guarantees, expressed or implied, No operational assessments have been made by DPA Auctions on this item, it has been photographed ONLY.



#85 - 1997 Big A 2800 Liquid Floater (PZ7531)

1997 Big A 2800 Liquid Floater (PZ7531), Cummins diesel engine, Allison automatic transmission, air conditioning, heat, Am/Fm radio, 1550 gallon stainless steel liquid system (S/N L155167), approx. 70' boom, foam marker, stainless steel foam marker tank, Firestone 66x43.00-25 front tires, Good Year 66x43.00-25 rear tires, Raven SCS460 monitor, Raven lightbar, shows 3947 hours, 39,742 miles. Notes: Item Location: Elm Creek, NE 68836 Equipment Sold "AS IS, WHERE IS": All equipment/property is sold "AS IS, WHERE IS" with no warranty or guarantees, expressed or implied, No operational assessments have been made by DPA Auctions on this item, it has been photographed ONLY.



#86 - 1972 Lubbock NH3 Transport Trailer (PZ7530)

1972 Lubbock NH3 Transport Trailer (PZ7530), 1971 Lubbock 9200 gallon NH3 transport trailer, 10.00R20 tires, spring ride suspension, Blackmer PTO pump, O.D. 81.9, O.A.L. 4.40, Shell THK .376, Head THK .250, Head D.R. HEMI, MAT'L SA517E, National Board #2026. Notes: Item Location: Elm Creek, NE 68836 Equipment Sold "AS IS, WHERE IS": All equipment/property is sold "AS IS, WHERE IS" with no warranty or guarantees, expressed or implied, No operational assessments have been made by DPA Auctions on this item, it has been photographed ONLY.



#87 - 1998 Ray Man Dry Conveyor (PZ7546)

1998 Ray Man Dry Conveyor (PZ7546), 1998 Ray Man model RM2810G dry conveyor, 24" belt, Kohler Command Pro 27 electric gas engine, portable, Notes: Has some motor issues, gasoline gets in the engine oil, contact seller for more details. Item Location: Belleville, IL 62222 Equipment Sold "AS IS, WHERE IS": All equipment/property is sold "AS IS, WHERE IS" with no warranty or guarantees, expressed or implied, No operational assessments have been made by DPA Auctions on this item, it has been photographed ONLY.



#88 - Case 1845C Skid Steer (PZ7544, Unit 13)

Case 1845C Skid Steer (PZ7544, Unit 13), Case 1845C skid steer, diesel engine, hydrostatic transmission, bucket, shows 1747 hours. Notes: Item Location: Belleville, IL 62222 Equipment Sold "AS IS, WHERE IS": All equipment/property is sold "AS IS, WHERE IS" with no warranty or guarantees, expressed or implied, No operational assessments have been made by DPA Auctions on this item, it has been photographed ONLY.



#89 - 1974 Utility Trailer (PZ7547, Unit 11)

1974 Utility Trailer (PZ7547, Unit 11), 1974 Utility trailer, 15' deck, 2'6" dove tail, ramps, tandem axle, 205/85R14.5 tires. Notes: Item Location: Belleville, IL 62222 Equipment Sold "AS IS, WHERE IS": All equipment/property is sold "AS IS, WHERE IS" with no warranty or guarantees, expressed or implied, No operational assessments have been made by DPA Auctions on this item, it has been photographed ONLY.



#90 - 2011 Ford F350 Extended Cab Pickup (PZ7548, Unit 200)

2011 Ford F350 Extended Cab Pickup (PZ7548, Unit 200), Power Stroke diesel engine, automatic transmission, air conditioning, heat, Am/Fm radio, cruise control, power windows & locks, running boards, shows 317,736 miles. Notes: Item Location: Belleville, IL 62222 Equipment Sold "AS IS, WHERE IS": All equipment/property is sold "AS IS, WHERE IS" with no warranty or guarantees, expressed or implied, No operational assessments have been made by DPA Auctions on this item, it has been photographed ONLY.



#91 - 2008 Ford F350 Super Duty Pickup (PZ7543, Unit 68)

2008 Ford F350 Super Duty Pickup (PZ7543, Unit 68), 4x4, diesel engine, automatic transmission, air conditioning, heat, Am/Fm radio, cruise control, power windows & locks, running boards, shows 220,334 miles. Notes: Needs Engine Work!! Item Location: Belleville, IL 62222 Equipment Sold "AS IS, WHERE IS": All equipment/property is sold "AS IS, WHERE IS" with no warranty or guarantees, expressed or implied, No operational assessments have been made by DPA Auctions on this item, it has been photographed ONLY.



#92 - 2002 Ford F350 Super Duty Pickup (PZ7542, Unit 85)

2002 Ford F350 Super Duty Pickup (PZ7542, Unit 85), 4x4, diesel engine, automatic transmission, air conditioning, heat, Am/Fm radio, running boards, shows 207,697 miles. Notes: This pickup needs a starter. Item Location: Belleville, IL 62222 Equipment Sold "AS IS, WHERE IS": All equipment/property is sold "AS IS, WHERE IS" with no warranty or guarantees, expressed or implied, No operational assessments have been made by DPA Auctions on this item, it has been photographed ONLY.



#93 - 2001 Ford F350 Super Duty Pickup (PZ7545, Unit 83)

2001 Ford F350 Super Duty Pickup (PZ7545, Unit 83), 4x4, diesel engine, automatic transmission, air conditioning, heat, Am/Fm radio, running boards, shows 218,089 miles. Notes: Oil pan leaks, No end gate. Item Location: Belleville, IL 62222 Equipment Sold "AS IS, WHERE IS": All equipment/property is sold "AS IS, WHERE IS" with no warranty or guarantees, expressed or implied, No operational assessments have been made by DPA Auctions on this item, it has been photographed ONLY.



#94 - 2013 Kubota R520S Articulating Loader (NP5425)

2013 Kubota R520S Articulating Loader (NP5425), Model R520ST, Kubota diesel engine, (Engine No. CG1937), hydro 2 speed transmission, canopy, lights, Bridgestone 15.5/60-18 Fast Grip tires, shows 240 hours. Notes: Item Location: Seneca, KS 66538 Equipment Sold "AS IS, WHERE IS": All equipment/property is sold "AS IS, WHERE IS" with no warranty or guarantees, expressed or implied, No operational assessments have been made by DPA Auctions on this item, it has been photographed ONLY.



#95 - 2008 Chevrolet Tahoe LS (TR3905)

2008 Chevrolet Tahoe LS (TR3905), 4 door, Flex Fuel gas engine, automatic transmission, power windows, power locks, AM/FM radio, CD, sun roof, steering wheel controls, cruise control power steering, tires at 50%, cloth interior, 3rd row seating, rear climate control, 157,935 miles, power mirrors, power seats. Notes: Item Location: Fremont, NE 68025 Equipment Sold "AS IS, WHERE IS": All equipment/property is sold "AS IS, WHERE IS" with no warranty or guarantees, expressed or implied, No operational assessments have been made by DPA Auctions on this item, it has been photographed ONLY.



#96 - 2012 Polar Liquid Transport Trailer (NP5716)

2012 Polar Liquid Transport Trailer (NP5716), 304 stainless steel, double conical, 5,600 gallon capacity, max product load 56,500lbs at 125 degree max temp, head mat'l 10 GA T304 SS, shell mat'l 12 GA T304 SS, tandem axle, Hendrickson air ride suspension, internal valve, ability to load/unload and pump off either side, air dump suspension valve, John Blue pump, Honda GX390 gas motor, ladder, 275/80R24.5 tires, aluminum wheels, GVWR 66,000lbs. Notes: Item Location: Oakland, NE 68045 Equipment Sold "AS IS, WHERE IS": All equipment/property is sold "AS IS, WHERE IS" with no warranty or guarantees, expressed or implied, No operational assessments have been made by DPA Auctions on this item, it has been photographed ONLY.



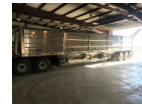
#97 - 2004 GMC Sierra 2500 4x4 Pickup (NP5719, Unit 76591)

2004 GMC Sierra 2500 4x4 Pickup (NP5719, Unit 76591), crew cab, 6.0L gas engine, automatic transmission, heat, air conditioning, dual climate control, Am/Fm CD radio, power windows, locks and mirrors, 245/75R16 tires 50%, tow package, running boards, Line-X spray in bed liner, power driver and passenger seat, shows 252,516 miles. Notes: PLEASE ALLOW AT LEAST 60 DAYS FOR TITLE TRANSFER. Item Location: Keenes, IL 62851 Equipment Sold "AS IS, WHERE IS": All equipment/property is sold "AS IS, WHERE IS" with no warranty or guarantees, expressed or implied, No operational assessments have been made by DPA Auctions on this item, it has been photographed ONLY.



#97A - 2015 Maurer Belt Trailer

2015 Maurer Belt Trailer, tandem axle, aluminum 48ft triple axel. 3 compartment, air ride suspension, new 37 hp kohler twin cylinder motor in spring of 2016, new discharge belt in spring of 2017 17ft from back of trailer to end spout, new bottom belt still in box will come, good brakes, good rubber, low miles, roll tarp, All traps and trap are remote control. Aluminum rims. Notes: Item Location: Blunt, SD 57522 Equipment Sold "AS IS, WHERE IS": All equipment/property is sold "AS IS, WHERE IS" with no warranty or guarantees, expressed or implied, No operational assessments have been made by DPA Auctions on this item, it has been photographed ONLY.



#98 - 2005 Terra Gator 9203 (DR7365)

2005 Terra Gator 9203 (DR7365), Cat diesel engine, 16 speed power shift, AG Chem four bin Soil Election dry air flow box, 70' booms, dual granular bins, Falcon II Controller, NEW Outback XD GPS swathing and autosteer, foam markers, electric roll over tarp, 1050/50R32 Michelin tires, shows 4985 hours, 45,507 miles. Notes: In 2016 replaced radiator, alternator, oil cooler, bearings, chains, 4 NEW nodes, distributor, distribution hoses. All new fluids and oils. 2013 replaced booms and stainless tips and has had very little use since 2014 and is ready to go. Item Location: Springfield, MN 56087 Equipment Sold "AS IS, WHERE IS": All equipment/property is sold "AS IS, WHERE IS" with no warranty or guarantees, expressed or implied, No operational assessments have been made by DPA Auctions on this item, it has been photographed ONLY.



#99 - 2001 Bauer Built Tender (DR7367)

2001 Bauer Built Tender (DR7367), tandem axle, Willmar 24 ton stainless steel 3 compartment hydraulic dry fertilizer tender unit, side shooter auger, self contained hydraulics w/Cummins diesel power unit, electric roll over tarp. Notes: Item Location: Springfield, MN 56087 Equipment Sold "AS IS, WHERE IS": All equipment/property is sold "AS IS, WHERE IS" with no warranty or guarantees, expressed or implied, No operational assessments have been made by DPA Auctions on this item, it has been photographed ONLY.



#100 - 1997 Loral (DR7362)

1997 Loral (DR7362), cab/chassis unit, X-Cab, DT466 diesel engine, automatic transmission, AM/FM radio, air conditioning, cruise control, air brakes, 66X43.00-25 rear tires, 48X31.00-20 front tires, shows 49,216 miles, 4181 hours. Notes: Item Location: Balaton, MN 56115 Equipment Sold "AS IS, WHERE IS": All equipment/property is sold "AS IS, WHERE IS" with no warranty or guarantees, expressed or implied, No operational assessments have been made by DPA Auctions on this item, it has been photographed ONLY.



#101 - 1999 Ford F350 (NP435)

1999 Ford F350 (NP435), Ford diesel engine, automatic transmission, 4X4, Miller Pro 500 gallon poly liquid spray system, 45' boom, Raven 440 controller, Raven swathing, foam markers, 5 way nozzle bodies, stainless steel chemical inductor, AM/FM radio, air conditioning, cruise control, 9.00-16 tires, shows 75,012 miles. Notes: Item Location: Elk Mound, WI 54739 Equipment Sold "AS IS, WHERE IS": All equipment/property is sold "AS IS, WHERE IS" with no warranty or guarantees, expressed or implied, No operational assessments have been made by DPA Auctions on this item, it has been photographed ONLY.



#102 - 1990 Krupp (DR7347)

1990 Krupp (DR7347), Mercedes 442 diesel engine, automatic drive, 8 wheel 72 ton hydraulic crane, 22,900# counterweight, 3 shive snatch block, headache ball, 4 stage boom, 52' jib boom, 4 hydraulic outriggers, 20.5R-22.5 tires, shows 19,204 hours. Notes: Item Location: Viroqua, WI 54665 Equipment Sold "AS IS, WHERE IS": All equipment/property is sold "AS IS, WHERE IS" with no warranty or guarantees, expressed or implied, No operational assessments have been made by DPA Auctions on this item, it has been photographed ONLY.



#103 - 2012 Cat 908H Loader (NJP463)

2012 Cat 908H Loader (NJP463), diesel engine, shuttle shift transmission, air conditioning, heat, Am/Fm radio, cab, lights, 6'8" bucket, auxiliary hydraulic outlets, Michelin 400/70R20 Michilen tires, shows 2414 hours. Notes: Item Location: Morris, MN 56267 Equipment Sold "AS IS, WHERE IS": All equipment/property is sold "AS IS, WHERE IS" with no warranty or guarantees, expressed or implied, No operational assessments have been made by DPA Auctions on this item, it has been photographed ONLY.



#104 - KSI Conveyor (DR7359)

KSI Conveyor (DR7359), model 1208-37 portable conveyor, electric drive, bottom end hopper, cleated belt. Notes: Item Location: Nicollet, MN 56074 Equipment Sold "AS IS, WHERE IS": All equipment/property is sold "AS IS, WHERE IS" with no warranty or guarantees, expressed or implied, No operational assessments have been made by DPA Auctions on this item, it has been photographed ONLY.



#105 - 2013 Soil Warrior 4030 (DR7364)

2013 Soil Warrior 4030 (DR7364), 12 row 30' dual bin dry flowable fertilizer, Ag Leader controller, on board air compressor, individual row air pressure units, on board scale, Avery Weigh-Tronix digital scale head, 540/65R30 dual wheels, with fluid in tires. Notes: Item Location: Laurel, NE 68745 Equipment Sold "AS IS, WHERE IS": All equipment/property is sold "AS IS, WHERE IS" with no warranty or guarantees, expressed or implied, No operational assessments have been made by DPA Auctions on this item, it has been photographed ONLY.



#106 - 2007 Dodge Ram 1500 (TR3906)

2007 Dodge Ram 1500 (TR3906), 4 door, gas engine, 6 speed transmission, AM/FM radio, CD, steering wheel controls, cruise control power steering, tires at 60%-65%, 2x4, spray in bed liner, 202,634 miles. Notes: Cracked windshield, 2 wheel drive. Item Location: Fremont, NE 68025 Equipment Sold "AS IS, WHERE IS": All equipment/property is sold "AS IS, WHERE IS" with no warranty or guarantees, expressed or implied, No operational assessments have been made by DPA Auctions on this item, it has been photographed ONLY.



#107 - 2004 International 9200i (DR7358)

2004 International 9200i (DR7358), NON RUNNER, Cummins ISX diesel engine, (engine has spun bearings), Super 10 speed transmission, transmission is good, tandem axle full screw, air ride suspension, rear ends are good, engine has been taken apart and parts are in the cab that have been removed. Notes: This truck is a NON RUNNER. Parts have been taken off. Item Location: Janesville, MN 56048 Equipment Sold "AS IS, WHERE IS": All equipment/property is sold "AS IS, WHERE IS" with no warranty or guarantees, expressed or implied, No operational assessments have been made by DPA Auctions on this item, it has been photographed ONLY.



#108 - (4) Goodyear Flotation Tires/Rims (NP5771)

(4) Goodyear Flotation Tires/Rims (NP5771), size 620/70R46, 70-75% tread, 12 bolt rim pattern, will fit a John Deere 4920/30/40 or R4045 sprayer, have been over roughly 8,000-10,000 acres, excellent condition. Notes: Item Location: Fort Dodge, IA 50501 Equipment Sold "AS IS, WHERE IS": All equipment/property is sold "AS IS, WHERE IS" with no warranty or guarantees, expressed or implied, No operational assessments have been made by DPA Auctions on this item, it has been photographed ONLY.



#109 - (4) Flotation Fenders (NP5772)

(4) Flotation Fenders (NP5772), will fit a John Deere 4920/30/40 sprayer, all hardware is included to mount on machine, excellent shape. Notes: Item Location: Fort Dodge, IA 50501 Equipment Sold "AS IS, WHERE IS": All equipment/property is sold "AS IS, WHERE IS" with no warranty or guarantees, expressed or implied, No operational assessments have been made by DPA Auctions on this item, it has been photographed ONLY.



#110 - (4) Firestone Flotation Tires/Rims (NP5773)

(4) Firestone Flotation Tires/Rims (NP5773), size 600/65R38, 65-70% tread, 12 bolt rim pattern, came off a John Deere 4830 sprayer, have been over roughly 12,000-15,000 acres, always stored inside a building. Notes: Item Location: Fort Dodge, IA 50501 Equipment Sold "AS IS, WHERE IS": All equipment/property is sold "AS IS, WHERE IS" with no warranty or guarantees, expressed or implied, No operational assessments have been made by DPA Auctions on this item, it has been photographed ONLY.



#111 - 2013 John Deere 2510H PitStop Pro (MH226)

2013 John Deere 2510H PitStop Pro (MH226), unit is on our 2013 2510H anhydrous bar, complete unit includes main hookup housing, extension cylinder and hitch, (2) two main hydraulic hoses that are needed to run the unit, the wiring is complete and plugs into a John Deere Rate Controller, unit was in good working condition when it was last used. Notes: Item Location: Cortland, NE 68331 Equipment Sold "AS IS, WHERE IS": All equipment/property is sold "AS IS, WHERE IS" with no warranty or guarantees, expressed or implied, No operational assessments have been made by DPA Auctions on this item, it has been photographed ONLY.



#112 - 1990 Ford LN800 (MH225, Unit 37009)

1990 Ford LN800 (MH225, Unit 37009), Ford 215HP 6 cylinder diesel engine, Fuller 10-speed transmission, AM/FM radio, 24ft flatbed with a 3200 gallon Poly Tank, tires 11R 22.5 in good condition, shows 115,916 miles. Notes: PLEASE ALLOW AT LEAST 60 DAYS FOR TITLE TRANSFER. Item Location: Sterling, IL 61081 Equipment Sold "AS IS, WHERE IS": All equipment/property is sold "AS IS, WHERE IS" with no warranty or guarantees, expressed or implied, No operational assessments have been made by DPA Auctions on this item, it has been photographed ONLY.



#113 - Clipper Super 2948D Seed Cleaner (TR3840)

Clipper Super 2948D Seed Cleaner (TR3840) Cleans all soybeans and small grains. 108 wood framed screens. 8 metal framed screens. Stored indoors. Notes: Item Location: Clear Lake, SD 57226 Equipment Sold "AS IS, WHERE IS": All equipment/property is sold "AS IS, WHERE IS" with no warranty or guarantees, expressed or implied, No operational assessments have been made by DPA Auctions on this item, it has been photographed ONLY.



#114 - 2003 GMC 2500HD (CP631)

2003 GMC 2500HD (CP631), Sierra, Gas 6.0 V8 engine, automatic transmission, extended cab 4 door, tow package, bed liner, 4x4, mud flaps, AC/Heat, AM/FM CD player, power windows, power locks, 5th wheel ball, 167,776 miles. Notes: NEW fuel pump, tank, lines, and pressure regulators. Item Location: Neligh, NE 68756 Equipment Sold "AS IS, WHERE IS": All equipment/property is sold "AS IS, WHERE IS" with no warranty or guarantees, expressed or implied, No operational assessments have been made by DPA Auctions on this item, it has been photographed ONLY.



#115 - 2005 Ford F-350 Flatbed (CP632)

2005 Ford F-350 Flatbed (CP632), Powerstroke V8 turbo diesel engine, 4x4, manual transmission, AM/FM radio, Heat/AC, Power windows and locks, dually, extended cab, grill guard, 9 foot Omaha Standard Badger flatbed, 5th wheel ball, cruise control, 178,375 miles. Notes: Vehicle had injector work done. Item Location: Neligh, NE 68756 Equipment Sold "AS IS, WHERE IS": All equipment/property is sold "AS IS, WHERE IS" with no warranty or guarantees, expressed or implied, No operational assessments have been made by DPA Auctions on this item, it has been photographed ONLY.



#116 - 1997 Ford F-250 (CP634)

1997 Ford F-250 (CP634), Gas engine, automatic transmission, extended cab, 5th wheel ball, AM/FM radio, power windows, power locks, running boards, cruise control, 4x4, Heat/AC, 231,744 miles. Notes: Item Location: Neligh, NE 68756 Equipment Sold "AS IS, WHERE IS": All equipment/property is sold "AS IS, WHERE IS" with no warranty or guarantees, expressed or implied, No operational assessments have been made by DPA Auctions on this item, it has been photographed ONLY.



#117 - 2007 Toyota 4-Runner (TR3907)

2007 Toyota 4-Runner (TR3907), 4 door, gas engine, automatic transmission, power windows, power locks, AM/FM radio, CD, sun roof, steering wheel controls, cruise control power steering, tires at 60%-65%, 4x4, power seats, 147,850 miles. Notes: Cracked windshield. Item Location: Fremont, NE 68025 Equipment Sold "AS IS, WHERE IS": All equipment/property is sold "AS IS, WHERE IS" with no warranty or guarantees, expressed or implied, No operational assessments have been made by DPA Auctions on this item, it has been photographed ONLY.



#118 - 2009 Hillsboro Flatbed (CP635)

2009 Hillsboro Flatbed (CP635), fits daully pickup, lights, mud flaps, 5th wheel hole, side tool boxes, 102",cruise control, 4x4, Heat/AC, 231,744 miles. Notes: Item Location: Neligh, NE 68756 Equipment Sold "AS IS, WHERE IS": All equipment/property is sold "AS IS, WHERE IS" with no warranty or guarantees, expressed or implied, No operational assessments have been made by DPA Auctions on this item, it has been photographed ONLY.



#119 - Pallet Hitches (CP636)

Pallet Hitches (CP636), Brute II that fits a Ford, B-W hitches that fir Ford/Dodge '05-'11. Notes: Item Location: Neligh, NE 68756 Equipment Sold "AS IS, WHERE IS": All equipment/property is sold "AS IS, WHERE IS" with no warranty or guarantees, expressed or implied, No operational assessments have been made by DPA Auctions on this item, it has been photographed ONLY.



#120 - NH3 Nurse Tank (NP5722)

NH3 Nurse Tank (NP5722), 1,000 gallon capacity, top front fill, 4 wheel gear, water tank, 12.5L-15 tires, data plate, broken baffle, did not pass inspection. Notes: Broken baffle, tank did not pass inspection. Item Location: Vinton, IA 52349 Equipment Sold "AS IS, WHERE IS": All equipment/property is sold "AS IS, WHERE IS" with no warranty or guarantees, expressed or implied, No operational assessments have been made by DPA Auctions on this item, it has been photographed ONLY.



#121 - Running Gear (NP5723)

Running Gear (NP5723), 5th wheel gear, 11L-15 tires. Notes: Item Location: Vinton, IA 52349 Equipment Sold "AS IS, WHERE IS": All equipment/property is sold "AS IS, WHERE IS" with no warranty or guarantees, expressed or implied, No operational assessments have been made by DPA Auctions on this item, it has been photographed ONLY.



#122 - 2004 Chevrolet Silverado 2500HD 4x4 Pickup (NP5721)

2004 Chevrolet Silverado 2500HD 4x4 Pickup (NP5721), Vortec 6.0L gas engine, automatic transmission, heat, air conditioning, Am/Fm radio, dual climate control, cruise control, LT265/75R16 tires, running boards, bug shield, shows 209,032 miles. Notes: Bumper is gone. Item Location: Vinton, IA 52349 Equipment Sold "AS IS, WHERE IS": All equipment/property is sold "AS IS, WHERE IS" with no warranty or guarantees, expressed or implied, No operational assessments have been made by DPA Auctions on this item, it has been photographed ONLY.



#123 - 1995 GMC 2500 SL 4x4 Pickup (NP5724, Unit 179952)

1995 GMC 2500 SL 4x4 Pickup (NP5724, Unit 179952), regular cab, 5.7L gas engine (BLOWN ENGINE), automatic transmission, heat, air conditioning, Am/Fm radio, running boards, ag bumper, no tailgate, LT245/75R16 tires, shows 245,556 miles. Notes: ENGINE IS BLOWN. Item Location: Vinton, IA 52349 Equipment Sold "AS IS, WHERE IS": All equipment/property is sold "AS IS, WHERE IS" with no warranty or guarantees, expressed or implied, No operational assessments have been made by DPA Auctions on this item, it has been photographed ONLY.



#124 - NH3 Nurse Tank (NP5732)

NH3 Nurse Tank (NP5732), 2011 American Welding & Tank LLC, 1,450 gallon capacity, top front fill, data plate, tank did not pass inspection, Nat'l Board #6NU002901. Notes: TANK ONLY, running gear not included, tank has holes in welds, tank did not pass inspection. Item Location: Millersburg, IA 52308 Equipment Sold "AS IS, WHERE IS": All equipment/property is sold "AS IS, WHERE IS" with no warranty or guarantees, expressed or implied, No operational assessments have been made by DPA Auctions on this item, it has been photographed ONLY.



#125 - Ace Roto-Mold Cone Bottom Poly Tank (NP5730)

Ace Roto-Mold Cone Bottom Poly Tank (NP5730), 2,500 gallon capacity, stand. Notes: Item Location: Millersburg, IA 52308 Equipment Sold "AS IS, WHERE IS": All equipment/property is sold "AS IS, WHERE IS" with no warranty or guarantees, expressed or implied, No operational assessments have been made by DPA Auctions on this item, it has been photographed ONLY.



#126 - Stainless Steel Liquid Tank (NP5731)

Stainless Steel Liquid Tank (NP5731), 1979 United Utensils Co. Inc., cone bottom, 1,600 gallon capacity, heavy duty casters. Notes: Item Location: Millersburg, IA 52308 Equipment Sold "AS IS, WHERE IS": All equipment/property is sold "AS IS, WHERE IS" with no warranty or guarantees, expressed or implied, No operational assessments have been made by DPA Auctions on this item, it has been photographed ONLY.



#127 - Junge System (NP5733)

Junge System (NP5733), C.E.C. valve automation, Rice Lake digital scale readout, Junge System max capacity 2,500lbs, Junge Flow Controller 24 control panel (S/N CC06070049), with all electrical components, pump/motor. Notes: Item Location: Millersburg, IA 52308 Equipment Sold "AS IS, WHERE IS": All equipment/property is sold "AS IS, WHERE IS" with no warranty or guarantees, expressed or implied, No operational assessments have been made by DPA Auctions on this item, it has been photographed ONLY.



#128 - 2007 Ford F-150 (TR3908)

2007 Ford F-150 (TR3908), FX4 off road package, 4 door, gas engine, automatic transmission, power windows, power locks, AM/FM radio, CD, steering wheel controls, cruise control power steering, tires at 60%-65%, 4x4, spray in bed liner, 173,453 miles. Notes: Item Location: Fremont, NE 68025 Equipment Sold "AS IS, WHERE IS": All equipment/property is sold "AS IS, WHERE IS" with no warranty or guarantees, expressed or implied, No operational assessments have been made by DPA Auctions on this item, it has been photographed ONLY.



#129 - NH3 Nurse Tank (NP5742)

NH3 Nurse Tank (NP5742), 1,000 gallon capacity, NO VALVES, data plate, tank did not pass inspection, Tank 8. Notes: Tank did not pass inspection. Item Location: Grinnell, IA 50112 Equipment Sold "AS IS, WHERE IS": All equipment/property is sold "AS IS, WHERE IS" with no warranty or guarantees, expressed or implied, No operational assessments have been made by DPA Auctions on this item, it has been photographed ONLY.



#130 - NH3 Nurse Tank (NP5743)

NH3 Nurse Tank (NP5743), 1,000 gallon capacity, 4 wheel gear, 11L-15 tires, valves WILL BE REMOVED, data plate, tank did not pass inspection, Tank 17. Notes: Tank did not pass inspection, Valves will be REMOVED. Item Location: Grinnell, IA 50112 Equipment Sold "AS IS, WHERE IS": All equipment/property is sold "AS IS, WHERE IS" with no warranty or guarantees, expressed or implied, No operational assessments have been made by DPA Auctions on this item, it has been photographed ONLY.



#131 - NH3 Nurse Tank (NP5744)

NH3 Nurse Tank (NP5744), 1,450 gallon capacity, valves WILL BE REMOVED, NO data plate, tank did not pass inspection, Tank 19. Notes: Tank did not pass inspection, Valves will be REMOVED. Item Location: Grinnell, IA 50112 Equipment Sold "AS IS, WHERE IS": All equipment/property is sold "AS IS, WHERE IS" with no warranty or guarantees, expressed or implied, No operational assessments have been made by DPA Auctions on this item, it has been photographed ONLY.



#132 - NH3 Nurse Tank (NP5745)

NH3 Nurse Tank (NP5745), 1,000 gallon capacity, NO VALVES, data plate, tank did not pass inspection, Tank 11. Notes: Tank did not pass inspection. Item Location: Grinnell, IA 50112 Equipment Sold "AS IS, WHERE IS": All equipment/property is sold "AS IS, WHERE IS" with no warranty or guarantees, expressed or implied, No operational assessments have been made by DPA Auctions on this item, it has been photographed ONLY.



#133 - Batco Drive Over Pit Conveyor (NP5736)

Batco Drive Over Pit Conveyor (NP5736), Model PS2500, 18" belt, portable, P205/65R15 tires, Square D control panel, Baldor 10HP 3 phase electric motor. Notes: Item Location: Grinnell, IA 50112 Equipment Sold "AS IS, WHERE IS": All equipment/property is sold "AS IS, WHERE IS" with no warranty or guarantees, expressed or implied, No operational assessments have been made by DPA Auctions on this item, it has been photographed ONLY.



#134 - 2004 Bobcat S175 Skid Steer (NP5738)

2004 Bobcat S175 Skid Steer (NP5738), diesel engine, joystick controls, open cab, 10-16.5 tires, approx. 67" bucket, Bobcat Interlock Control System, shows 1,993 hours. Notes: Item Location: Grinnell, IA 50112 Equipment Sold "AS IS, WHERE IS": All equipment/property is sold "AS IS, WHERE IS" with no warranty or guarantees, expressed or implied, No operational assessments have been made by DPA Auctions on this item, it has been photographed ONLY.



#135 - 2000 Freightliner Cab/Chassis (NP5737, Unit 66)

2000 Freightliner Cab/Chassis (NP5737, Unit 66), Cummins ISM diesel engine, 10 speed transmission, heat, air conditioning, Am/Fm radio, air ride cab, tandem axle, air ride suspension, 11R22.5 tires, shows 477,317 miles. Notes: Rear end is bad, contact seller for more details. Item Location: Grinnell, IA 50112 Equipment Sold "AS IS, WHERE IS": All equipment/property is sold "AS IS, WHERE IS" with no warranty or guarantees, expressed or implied, No operational assessments have been made by DPA Auctions on this item, it has been photographed ONLY.



#136 - 2003 Ford F-150 XL 4x4 Pickup (NP5739)

2003 Ford F-150 XL 4x4 Pickup (NP5739), extended cab, Triton 4.6L gas engine, automatic transmission, heat, air conditioning, Am/Fm radio, cruise, running boards (1 disconnected), bug shield, LT245/75R16 tires, shows 184,515 miles. Notes: Item Location: Grinnell, IA 50112 Equipment Sold "AS IS, WHERE IS": All equipment/property is sold "AS IS, WHERE IS" with no warranty or guarantees, expressed or implied, No operational assessments have been made by DPA Auctions on this item, it has been photographed ONLY.



#137 - 2010 Ford Escape XLT (NP5740)

2010 Ford Escape XLT (NP5740), Duratec 24 Valve V6 gas engine, automatic transmission, heat, air conditioning, Am/Fm CD radio, power windows, locks and mirrors, cruise, Flex Fuel, P235/70R16 tires, shows 188,510 miles. Notes: Item Location: Grinnell, IA 50112 Equipment Sold "AS IS, WHERE IS": All equipment/property is sold "AS IS, WHERE IS" with no warranty or guarantees, expressed or implied, No operational assessments have been made by DPA Auctions on this item, it has been photographed ONLY.



#138 - 1995 Ford Econoline 150 Van (NP5741)

1995 Ford Econoline 150 Van (NP5741), EFI gas engine, automatic transmission, heat, Am/Fm radio, P235/75R15 tires, shows 149,323 miles. Notes: Item Location: Grinnell, IA 50112 Equipment Sold "AS IS, WHERE IS": All equipment/property is sold "AS IS, WHERE IS" with no warranty or guarantees, expressed or implied, No operational assessments have been made by DPA Auctions on this item, it has been photographed ONLY.



#139 - Ray-Man Belt Conveyor (NP5766)

Ray-Man Belt Conveyor (NP5766), Model SC10X27, 10" belt x 27' length, portable, electric motor, P175/80R13 tires. Notes: Item Location: State Center, IA 50247 Equipment Sold "AS IS, WHERE IS": All equipment/property is sold "AS IS, WHERE IS" with no warranty or guarantees, expressed or implied, No operational assessments have been made by DPA Auctions on this item, it has been photographed ONLY.



#140 - Anhydrous Storage Tank (NP5735)

Anhydrous Storage Tank (NP5735), approx. 11,000 gallon capacity, tank volume gauge, no data plate, Iowa Department of Agriculture & Land Stewardship #3347. Notes: This is being sold as a TANK ONLY. This item must be removed by January 24, 2018, no exceptions. Dismantle, removal and transportation is at the expense, risk and liability of the buyer. Item Location: Barnes City, IA 50027 Equipment Sold "AS IS, WHERE IS": All equipment/property is sold "AS IS, WHERE IS" with no warranty or guarantees, expressed or implied, No operational assessments have been made by DPA Auctions on this item, it has been photographed ONLY.



#141 - LP Tank (NP5764)

LP Tank (NP5764), 1959 Delta Tank Mfg. Co. Inc., 500 gallon capacity, data plate. Notes: Item Location: State Center, IA 50247 Equipment Sold "AS IS, WHERE IS": All equipment/property is sold "AS IS, WHERE IS" with no warranty or guarantees, expressed or implied, No operational assessments have been made by DPA Auctions on this item, it has been photographed ONLY.



#142 - LP Tank (NP5765)

LP Tank (NP5765), 1950 Butler, 492 gallon capacity, data plate. Notes: Item Location: State Center, IA 50247 Equipment Sold "AS IS, WHERE IS": All equipment/property is sold "AS IS, WHERE IS" with no warranty or guarantees, expressed or implied, No operational assessments have been made by DPA Auctions on this item, it has been photographed ONLY.



#143 - Running Gear (NP5767)

Running Gear (NP5767), 4 wheel, 11L-15 tires. Notes: Item Location: State Center, IA 50247 Equipment Sold "AS IS, WHERE IS": All equipment/property is sold "AS IS, WHERE IS" with no warranty or guarantees, expressed or implied, No operational assessments have been made by DPA Auctions on this item, it has been photographed ONLY.



#144 - Ditch Witch C9 Walk Behind Trencher (NP5768)

Ditch Witch C9 Walk Behind Trencher (NP5768), Wisconsin Model AENLD gas motor, 16x6.50-8 tires. Notes: Item Location: State Center, IA 50247 Equipment Sold "AS IS, WHERE IS": All equipment/property is sold "AS IS, WHERE IS" with no warranty or guarantees, expressed or implied, No operational assessments have been made by DPA Auctions on this item, it has been photographed ONLY.



#145 - NH3 Nurse Tank (NP5747)

NH3 Nurse Tank (NP5747), 1,000 gallon capacity, water tank, data plate, NO VALVES, tank did not pass inspection, Tank T0-204B. Notes: Tank did not pass inspection. Item Location: Toledo, IA 52342 Equipment Sold "AS IS, WHERE IS": All equipment/property is sold "AS IS, WHERE IS" with no warranty or guarantees, expressed or implied, No operational assessments have been made by DPA Auctions on this item, it has been photographed ONLY.



#146 - NH3 Nurse Tank (NP5748)

NH3 Nurse Tank (NP5748), 1,000 gallon capacity, data plate, valves WILL BE REMOVED, tank did not pass inspection, Tank T0-41. Notes: Tank did not pass inspection, valves will be REMOVED. Item Location: Toledo, IA 52342 Equipment Sold "AS IS, WHERE IS": All equipment/property is sold "AS IS, WHERE IS" with no warranty or guarantees, expressed or implied, No operational assessments have been made by DPA Auctions on this item, it has been photographed ONLY.



#147 - NH3 Nurse Tank (NP5749)

NH3 Nurse Tank (NP5749), Trinity Steel Co. Inc. 1,000 gallon capacity, data plate, NO VALVES, tank did not pass inspection, Tank T0-16. Notes: Tank did not pass inspection. Item Location: Toledo, IA 52342 Equipment Sold "AS IS, WHERE IS": All equipment/property is sold "AS IS, WHERE IS" with no warranty or guarantees, expressed or implied, No operational assessments have been made by DPA Auctions on this item, it has been photographed ONLY.



#148 - 1987 Ford Cargo 7000 Liquid Nurse Truck (NP5746)

1987 Ford Cargo 7000 Liquid Nurse Truck (NP5746), diesel engine, manual transmission, heat, Am/Fm radio, single axle, spring suspension, 1,600 gallon stainless steel liquid nurse tank, tank frame is broken (see photos), 295/75R22.5 tires, shows 204,558 miles. Notes: Item Location: Toledo, IA 52342 Equipment Sold "AS IS, WHERE IS": All equipment/property is sold "AS IS, WHERE IS" with no warranty or guarantees, expressed or implied, No operational assessments have been made by DPA Auctions on this item, it has been photographed ONLY.



#149 - NH3 Nurse Tank (NP5756)

NH3 Nurse Tank (NP5756), 1,430 gallon capacity, NO VALVES, data plate, tank did not pass inspection, Tank 13. Notes: Tank did not pass inspection. Item Location: Garwin, IA 50632 Equipment Sold "AS IS, WHERE IS": All equipment/property is sold "AS IS, WHERE IS" with no warranty or guarantees, expressed or implied, No operational assessments have been made by DPA Auctions on this item, it has been photographed ONLY.



#150 - NH3 Nurse Tank (NP5755)

NH3 Nurse Tank (NP5755), Trinity Industries, Inc. 1,430 gallon capacity, NO VALVES, data plate, tank did not pass inspection, Tank 2. Notes: Tank did not pass inspection. Item Location: Garwin, IA 50632 Equipment Sold "AS IS, WHERE IS": All equipment/property is sold "AS IS, WHERE IS" with no warranty or guarantees, expressed or implied, No operational assessments have been made by DPA Auctions on this item, it has been photographed ONLY.



#151 - NH3 Nurse Tank (NP5754)

NH3 Nurse Tank (NP5754), 1972 Beaird 1,000 gallon capacity, NO VALVES, data plate, tank did not pass inspection, Tank 56. Notes: Tank did not pass inspection. Item Location: Garwin, IA 50632 Equipment Sold "AS IS, WHERE IS": All equipment/property is sold "AS IS, WHERE IS" with no warranty or guarantees, expressed or implied, No operational assessments have been made by DPA Auctions on this item, it has been photographed ONLY.



#152 - NH3 Nurse Tank (NP5753)

NH3 Nurse Tank (NP5753), 1,000 gallon capacity, NO VALVES, data plate, tank did not pass inspection, Tank 71. Notes: Tank did not pass inspection. Item Location: Garwin, IA 50632 Equipment Sold "AS IS, WHERE IS": All equipment/property is sold "AS IS, WHERE IS" with no warranty or guarantees, expressed or implied, No operational assessments have been made by DPA Auctions on this item, it has been photographed ONLY.



#153 - NH3 Nurse Tank (NP5752)

NH3 Nurse Tank (NP5752), 1,000 gallon capacity, NO VALVES, NO data plate, tank did not pass inspection, Tank 68. Notes: Tank did not pass inspection. Item Location: Garwin, IA 50632 Equipment Sold "AS IS, WHERE IS": All equipment/property is sold "AS IS, WHERE IS" with no warranty or guarantees, expressed or implied, No operational assessments have been made by DPA Auctions on this item, it has been photographed ONLY.



#154 - NH3 Nurse Tank (NP5751)

NH3 Nurse Tank (NP5751), 1964 Trinity Steel Co. Inc. 1,000 gallon capacity, NO VALVES, data plate, tank did not pass inspection, Tank 49. Notes: Tank did not pass inspection. Item Location: Garwin, IA 50632 Equipment Sold "AS IS, WHERE IS": All equipment/property is sold "AS IS, WHERE IS" with no warranty or guarantees, expressed or implied, No operational assessments have been made by DPA Auctions on this item, it has been photographed ONLY.



#155 - Anhydrous Storage Tank (NP5734)

Anhydrous Storage Tank (NP5734), approx. 11,000 gallon capacity, tank volume gauge, no data plate, Iowa Department of Agriculture & Land Stewardship #3346. Notes: This is being sold as a TANK ONLY. This item must be removed by January 24, 2018, no exceptions. Dismantle, removal and transportation is at the expense, risk and liability of the buyer. Item Location: Barnes City, IA 50027 Equipment Sold "AS IS, WHERE IS": All equipment/property is sold "AS IS, WHERE IS" with no warranty or guarantees, expressed or implied, No operational assessments have been made by DPA Auctions on this item, it has been photographed ONLY.



#156 - NH3 Nurse Tank (NP5750)

NH3 Nurse Tank (NP5750), 1,000 gallon capacity, NO VALVES, data plate, tank did not pass inspection, Tank 52. Notes: Tank did not pass inspection. Item Location: Garwin, IA 50632 Equipment Sold "AS IS, WHERE IS": All equipment/property is sold "AS IS, WHERE IS" with no warranty or guarantees, expressed or implied, No operational assessments have been made by DPA Auctions on this item, it has been photographed ONLY.



#157 - NH3 Nurse Tank (NP5758)

NH3 Nurse Tank (NP5758), Trinity Industries, Inc. 1,000 gallon capacity, NO VALVES, data plate, tank did not pass inspection, Tank 55. Notes: Tank did not pass inspection. Item Location: Albion, IA 50005 Equipment Sold "AS IS, WHERE IS": All equipment/property is sold "AS IS, WHERE IS" with no warranty or guarantees, expressed or implied, No operational assessments have been made by DPA Auctions on this item, it has been photographed ONLY.



#158 - NH3 Nurse Tank (NP5759)

NH3 Nurse Tank (NP5759), Trintiy Steel Co. 1,000 gallon capacity, NO VALVES, data plate, tank did not pass inspection, Tank 54. Notes: Tank did not pass inspection. Item Location: Albion, IA 50005 Equipment Sold "AS IS, WHERE IS": All equipment/property is sold "AS IS, WHERE IS" with no warranty or guarantees, expressed or implied, No operational assessments have been made by DPA Auctions on this item, it has been photographed ONLY.



#159 - NH3 Nurse Tank (NP5760)

NH3 Nurse Tank (NP5760), 1,000 gallon capacity, NO VALVES, data plate, tank did not pass inspection, Tank 2B. Notes: Tank did not pass inspection. Item Location: Albion, IA 50005 Equipment Sold "AS IS, WHERE IS": All equipment/property is sold "AS IS, WHERE IS" with no warranty or guarantees, expressed or implied, No operational assessments have been made by DPA Auctions on this item, it has been photographed ONLY.



#160 - NH3 Nurse Tank (NP5761)

NH3 Nurse Tank (NP5761), 1,000 gallon capacity, NO VALVES, data plate, tank did not pass inspection, Tank 48. Notes: Tank did not pass inspection. Item Location: Albion, IA 50005 Equipment Sold "AS IS, WHERE IS": All equipment/property is sold "AS IS, WHERE IS" with no warranty or guarantees, expressed or implied, No operational assessments have been made by DPA Auctions on this item, it has been photographed ONLY.



#161 - NH3 Nurse Tank (NP5762)

NH3 Nurse Tank (NP5762), Trinity Steel Co. Inc. 1,000 gallon capacity, NO VALVES, data plate, tank did not pass inspection, Tank 34. Notes: Tank did not pass inspection. Item Location: Albion, IA 50005 Equipment Sold "AS IS, WHERE IS": All equipment/property is sold "AS IS, WHERE IS" with no warranty or guarantees, expressed or implied, No operational assessments have been made by DPA Auctions on this item, it has been photographed ONLY.



#162 - NH3 Nurse Tank (NP5763)

NH3 Nurse Tank (NP5763), Trinity Steel Co. Inc. 1,000 gallon capacity, NO VALVES, data plate, tank did not pass inspection, Tank 35. Notes: Tank did not pass inspection. Item Location: Albion, IA 50005 Equipment Sold "AS IS, WHERE IS": All equipment/property is sold "AS IS, WHERE IS" with no warranty or guarantees, expressed or implied, No operational assessments have been made by DPA Auctions on this item, it has been photographed ONLY.



#163 - Fuel Storage Tank (NP5757)

Fuel Storage Tank (NP5757), approx. 15,000 gallon capacity, flat bottom tank. Notes: Condition and integrity of tank unknown, contact seller for more details. Buyer responsible for loading and transportation. Item Location: Traer, IA 50675 Equipment Sold "AS IS, WHERE IS": All equipment/property is sold "AS IS, WHERE IS" with no warranty or guarantees, expressed or implied, No operational assessments have been made by DPA Auctions on this item, it has been photographed ONLY.



#164 - Duo Lift Dual Tank Running Gear (NP5725)

Duo Lift Dual Tank Running Gear (NP5725), 5th wheel gear, 16.5L-16.1 tires, comes with (2) side steps and (2) ladders, did have (2) 1,000 gallon NH3 Tanks mounted on it. Notes: Item Location: Van Horne, IA 52346 Equipment Sold "AS IS, WHERE IS": All equipment/property is sold "AS IS, WHERE IS" with no warranty or guarantees, expressed or implied, No operational assessments have been made by DPA Auctions on this item, it has been photographed ONLY.



#165 - Duo Lift Dual Tank Running Gear (NP5728)

Duo Lift Dual Tank Running Gear (NP5728), 5th wheel gear, 16.5L-16.1 tires, comes with (2) side steps and (2) ladders, did have (2) 1,000 gallon NH3 Tanks mounted on it. Notes: Item Location: Van Horne, IA 52346 Equipment Sold "AS IS, WHERE IS": All equipment/property is sold "AS IS, WHERE IS" with no warranty or guarantees, expressed or implied, No operational assessments have been made by DPA Auctions on this item, it has been photographed ONLY.



#166 - Duo Lift Dual Tank Running Gear (NP5729)

Duo Lift Dual Tank Running Gear (NP5729), 5th wheel gear, 16.5L-16.1 tires, comes with (2) side steps and (2) ladders, did have (2) 1,000 gallon NH3 Tanks mounted on it. Notes: Item Location: Van Horne, IA 52346 Equipment Sold "AS IS, WHERE IS": All equipment/property is sold "AS IS, WHERE IS" with no warranty or guarantees, expressed or implied, No operational assessments have been made by DPA Auctions on this item, it has been photographed ONLY.



#167 - Duo Lift Dual Tank Running Gear (NP5726)

Duo Lift Dual Tank Running Gear (NP5726), 5th wheel gear, 16.5L-16.1 tires, comes with (2) side steps and (2) ladders, did have (2) 1,000 gallon NH3 Tanks mounted on it. Notes: Item Location: Van Horne, IA 52346 Equipment Sold "AS IS, WHERE IS": All equipment/property is sold "AS IS, WHERE IS" with no warranty or guarantees, expressed or implied, No operational assessments have been made by DPA Auctions on this item, it has been photographed ONLY.



#168 - Duo Lift Dual Tank Running Gear (NP5727)

Duo Lift Dual Tank Running Gear (NP5727), 5th wheel gear, 16.5L-16.1 tires, comes with (2) side steps and (2) ladders, did have (2) 1,000 gallon NH3 Tanks mounted on it. Notes: Item Location: Van Horne, IA 52346 Equipment Sold "AS IS, WHERE IS": All equipment/property is sold "AS IS, WHERE IS" with no warranty or guarantees, expressed or implied, No operational assessments have been made by DPA Auctions on this item, it has been photographed ONLY.



#169 - Tandem Axle Gear (NP5769)

Tandem Axle Gear (NP5769), jack stand, 7.00-15 front tire, 185/70R14 rear tire. Notes: NO TITLE. Item Location: Baxter, IA 50028 Equipment Sold "AS IS, WHERE IS": All equipment/property is sold "AS IS, WHERE IS" with no warranty or guarantees, expressed or implied, No operational assessments have been made by DPA Auctions on this item, it has been photographed ONLY.



#170 - 2006 John Deere 4920 Sprayer (PZ7573, Unit 1070)

2006 John Deere 4920 Sprayer (PZ7573, Unit 1070), John Deere diesel engine, hydrostatic transmission, air conditioning, heat, Am/Fm CD stereo, 1200 gallon stainless steel liquid system, 120' boom, foam marker, poly foam marker tank, stainless steel chemical eductor, pressure washer, Firestone Radial 9100 380/105R50 tires, StarFire iTC globe, John Deere monitor, John Deere brown box, shows 5435 hours. Notes: There is a wiring problem to the monitor. Please call seller for more information. Item Location: Charles City, IA 50616 Equipment Sold "AS IS, WHERE IS": All equipment/property is sold "AS IS, WHERE IS" with no warranty or guarantees, expressed or implied, No operational assessments have been made by DPA Auctions on this item, it has been photographed ONLY.



#171 - DMI NH3 Tool Bar (PZ7569, Unit 3505A)

DMI NH3 Tool Bar (PZ7569, Unit 3505A), DMI 4200II NH3 tool bar, hydraulic wings, walking tandems, 11L-15 flotation tires, rear hitch. Notes: Item Location: Charles City, IA 50616 Equipment Sold "AS IS, WHERE IS": All equipment/property is sold "AS IS, WHERE IS" with no warranty or guarantees, expressed or implied, No operational assessments have been made by DPA Auctions on this item, it has been photographed ONLY.



#172 - New Leader Dry Spreader Box (PZ7572)

New Leader Dry Spreader Box (PZ7572), New Leader L3220 G4 - 11 stainless steel MultiApplier dry spreader box, twin spinner, all hydraulic. Notes: Came off JD 4920. Spinners are missing, cap is missing. Please call seller for more information. Item Location: Charles City, IA 50616 Equipment Sold "AS IS, WHERE IS": All equipment/property is sold "AS IS, WHERE IS" with no warranty or guarantees, expressed or implied, No operational assessments have been made by DPA Auctions on this item, it has been photographed ONLY.



#173 - Liquid Nurse Trailer (PZ7566, Unit 641)

Liquid Nurse Trailer (PZ7566, Unit 641), 1000 gallon poly liquid nurse tank, 4 wheel running gear, 11L-15 flotation tires. Notes: Item Location: Charles City, IA 50616 Equipment Sold "AS IS, WHERE IS": All equipment/property is sold "AS IS, WHERE IS" with no warranty or guarantees, expressed or implied, No operational assessments have been made by DPA Auctions on this item, it has been photographed ONLY.



#174 - Liquid Nurse Trailer (PZ7567, Unit 1060)

Liquid Nurse Trailer (PZ7567, Unit 1060), 900 gallon poly liquid nurse tank, tandem axle gear, 12.5L-15 flotation tires. Notes: Item Location: Charles City, IA 50616 Equipment Sold "AS IS, WHERE IS": All equipment/property is sold "AS IS, WHERE IS" with no warranty or guarantees, expressed or implied, No operational assessments have been made by DPA Auctions on this item, it has been photographed ONLY.



#175 - 2004 B & B Dry Tender Trailer (PZ7571, Unit 3523)

2004 B & B Dry Tender Trailer (PZ7571, Unit 3523), 2004 B & B tandem axle trailer, cheater axle, spring suspension, Willmar 24 ton dry tender box (S/N AGCW16SSHN001075), side discharge auger, roll over tarp, 255/70R22.5 tires, 235/75R17.5 cheater tires. Notes: ABS issues, service brake issues. Please contact seller for more information. Item Location: Charles City, IA 50616 Equipment Sold "AS IS, WHERE IS": All equipment/property is sold "AS IS, WHERE IS" with no warranty or guarantees, expressed or implied, No operational assessments have been made by DPA Auctions on this item, it has been photographed ONLY.



#176 - 1986 Volvo Truck (PZ7568, Unit 84)

1986 Volvo Truck (PZ7568, Unit 84), Cummins diesel engine, Fuller 7 speed transmission, heat, tandem axle, full screw, 3300 gallon 2 compartment fiberglass liquid nurse tank, 295/75R22.5 front tires, 11R22.5 rear tires, shows 612,326 miles. Notes: Item Location: Charles City, IA 50616 Equipment Sold "AS IS, WHERE IS": All equipment/property is sold "AS IS, WHERE IS" with no warranty or guarantees, expressed or implied, No operational assessments have been made by DPA Auctions on this item, it has been photographed ONLY.



#177 - 2003 GMC 2500HD Pickup (PZ7570, Unit 74)

2003 GMC 2500HD Pickup (PZ7570, Unit 74), 4x4, gas engine, automatic transmission, air conditioning, heat, Am/Fm radio, Western snow blade, LT245/75R16 tires, shows 168,943 miles. Notes: This pickup has a Salvage title. Needs exhaust, manifold leaks, check engine lights on. Please call seller for further information. Item Location: Charles City, IA 50616 Equipment Sold "AS IS, WHERE IS": All equipment/property is sold "AS IS, WHERE IS" with no warranty or guarantees, expressed or implied, No operational assessments have been made by DPA Auctions on this item, it has been photographed ONLY.



#178 - 2001 Terra Gator 6103 Dry Floater (PZ7587, Unit 33463)

2001 Terra Gator 6103 Dry Floater (PZ7587, Unit 33463), John Deere diesel engine, Terra Shift transmission (transmission is out), air conditioning, heat, Ag Force model FL-3024-13 stainless steel Multiplier dry box (S/N 12309), twin spinner, all hydraulic, roll over tarp, Good Year 66x43.00-25 front tires, PrimeX 66x43.00-25 rear tires, Raven monitor, shows 11,125 hours, 113,947 miles. Notes: Transmission is out and dry box is not hooked up. Item Location: Independence, IA 50644 Equipment Sold "AS IS, WHERE IS": All equipment/property is sold "AS IS, WHERE IS" with no warranty or guarantees, expressed or implied, No operational assessments have been made by DPA Auctions on this item, it has been photographed ONLY.



#179 - Dry Tender Trailer (PZ7590)

Dry Tender Trailer (PZ7590), Tyler 10 ton dry tender box, rear discharge auger, roll over tarp, tandem axle gear, 19L-16.1 flotation tires. Notes: Item Location: Independence, IA 50644 Equipment Sold "AS IS, WHERE IS": All equipment/property is sold "AS IS, WHERE IS" with no warranty or guarantees, expressed or implied, No operational assessments have been made by DPA Auctions on this item, it has been photographed ONLY.



#180 - Batco Drive Over Conveyor (PZ7591)

Batco Drive Over Conveyor (PZ7591), Batco model PS2500 drive over conveyor, 17" belt, Lincoln 10 hp electric motor, portable. Notes: Item Location: Independence, IA 50644 Equipment Sold "AS IS, WHERE IS": All equipment/property is sold "AS IS, WHERE IS" with no warranty or guarantees, expressed or implied, No operational assessments have been made by DPA Auctions on this item, it has been photographed ONLY.



#181 - Running Gear (PZ7598)

Running Gear (PZ7598), Heavy duty running gear, tandem axle, 21.5L-16.1 flotation tires. Notes: Item Location: Independence, IA 50644 Equipment Sold "AS IS, WHERE IS": All equipment/property is sold "AS IS, WHERE IS" with no warranty or guarantees, expressed or implied, No operational assessments have been made by DPA Auctions on this item, it has been photographed ONLY.



#182 - 1998 Sun Dry Tender Trailer (PZ7597, Unit 33542)

1998 Sun Dry Tender Trailer (PZ7597, Unit 33542), 1998 Sun tandem axle trailer, spring suspension, Adams 20 ton stainless steel hopper, roll over tarp, 255/70R22.5 tires. Notes: PLEASE ALLOW AT LEAST 60 DAYS FOR TITLE TRANSFER. Item Location: Independence, IA 50644 Equipment Sold "AS IS, WHERE IS": All equipment/property is sold "AS IS, WHERE IS" with no warranty or guarantees, expressed or implied, No operational assessments have been made by DPA Auctions on this item, it has been photographed ONLY.



#183 - 1979 Rogers Dry Tender Trailer (PZ7589, Unit 33532)

1979 Rogers Dry Tender Trailer (PZ7589, Unit 33532), 1979 Rogers tandem axle trailer, air ride suspension, 25' deck, wood floor, Willmar 16 ton dry tender box, rear discharge auger, roll over tarp, 8.25-20 tires. Notes: PLEASE ALLOW AT LEAST 60 DAYS FOR TITLE TRANSFER. Item Location: Independence, IA 50644 Equipment Sold "AS IS, WHERE IS": All equipment/property is sold "AS IS, WHERE IS" with no warranty or guarantees, expressed or implied, No operational assessments have been made by DPA Auctions on this item, it has been photographed ONLY.



#184 - 1995 Specialty Constructed Sprayer Trailer (PZ7588, Unit 33545)

1995 Specialty Constructed Sprayer Trailer (PZ7588, Unit 33545), 1995 Specialty Constructed sprayer trailer, single axle, 21' deck, 5' fold down ramps, Ace Roto-Mold chemical eductor, 2500 gallon poly flat bottom liquid tank, 255/70R22.5 tires. Notes: PLEASE ALLOW AT LEAST 60 DAYS FOR TITLE TRANSFER. Item Location: Independence, IA 50644 Equipment Sold "AS IS, WHERE IS": All equipment/property is sold "AS IS, WHERE IS" with no warranty or guarantees, expressed or implied, No operational assessments have been made by DPA Auctions on this item, it has been photographed ONLY.



#185 - 2009 John Deere 4830 (DR7368)

2009 John Deere 4830 (DR7368), John Deere diesel engine, hydrostatic drive, 1000 gallon stainless steel liquid system, 90' boom, foam markers, 5 way nozzle bodies, poly foam tank, StarFire iTC globe, Green Star controller, UC4 auto boom height control, stainless steel chemical inductor, rear camera, AM/FM CD radio, cab heat/air conditioning, 380/90R46 row crop tires, shows 3564 hours. Notes: Item Location: Cokato, MN 55321 Equipment Sold "AS IS, WHERE IS": All equipment/property is sold "AS IS, WHERE IS" with no warranty or guarantees, expressed or implied, No operational assessments have been made by DPA Auctions on this item, it has been photographed ONLY.



#186 - 1983 GMC Brigadier Liquid Nurse Truck (PZ7596, Unit 33449)

1983 GMC Brigadier Liquid Nurse Truck (PZ7596, Unit 33449), Cummins diesel engine, manual transmission, heat, tandem axle, full screw, 2000 gallon poly liquid nurse tank, Honda WB30X gas engine/pump, 12R22.5 front tires, 295/75R22.5 rear tires, shows 422,301 miles. Notes: Batteries are weak. PLEASE ALLOW AT LEAST 60 DAYS FOR TITLE TRANSFER. Item Location: Independence, IA 50644 Equipment Sold "AS IS, WHERE IS": All equipment/property is sold "AS IS, WHERE IS" with no warranty or guarantees, expressed or implied, No operational assessments have been made by DPA Auctions on this item, it has been photographed ONLY.



#187 - 1985 GMC 7000 Liquid Nurse Truck (PZ7595, Unit# 33450)

1985 GMC 7000 Liquid Nurse Truck (PZ7595, Unit# 33450), gas engine, 4 speed transmission, heat, Am/Fm cassette radio, single axle, 1600 gallon poly liquid nurse tank, Honda GX160 gas engine/pump, 11R22.5 tires, shows 18,427 miles. Notes: Batteries are weak. PLEASE ALLOW AT LEAST 60 DAYS FOR TITLE TRANSFER. Item Location: Independence, IA 50644 Equipment Sold "AS IS, WHERE IS": All equipment/property is sold "AS IS, WHERE IS" with no warranty or guarantees, expressed or implied, No operational assessments have been made by DPA Auctions on this item, it has been photographed ONLY.



#188 - 2005 IHC 4300 Van Truck (PZ7594, Unit 33454)

2005 IHC 4300 Van Truck (PZ7594, Unit 33454), DT466 diesel engine, automatic transmission, air conditioning, heat, Am/Fm CD stereo, cruise control, single axle, air ride suspension, Morgan model GVSD09120096 van body (S/N MWI04VB30028005), roll up door, pull out ramp, 295/75R22.5 tires, shows 302,380 miles. Notes: PLEASE ALLOW AT LEAST 60 DAYS FOR TITLE TRANSFER. Item Location: Independence, IA 50644 Equipment Sold "AS IS, WHERE IS": All equipment/property is sold "AS IS, WHERE IS" with no warranty or guarantees, expressed or implied, No operational assessments have been made by DPA Auctions on this item, it has been photographed ONLY.



#189 - 1995 Ford Van Truck (PZ7593, Unit 33437)

1995 Ford Van Truck (PZ7593, Unit 33437), diesel engine, automatic transmission, heat, Supreme 16' van body (S/N VF16084096S53722), roll up door, curb door, curb roll up door, lift, 285/75R24.5 front tires, 295/75R22.5 rear tires, shows 198,838 miles. Notes: This truck is a NON runner, please call seller for more information. PLEASE ALLOW AT LEAST 60 DAYS FOR TITLE TRANSFER. Item Location: Independence, IA 50644 Equipment Sold "AS IS, WHERE IS": All equipment/property is sold "AS IS, WHERE IS" with no warranty or guarantees, expressed or implied, No operational assessments have been made by DPA Auctions on this item, it has been photographed ONLY.



#190 - 1989 Dodge Ram 350 Flatbed (PZ7592, Unit 33432)

1989 Dodge Ram 350 Flatbed (PZ7592, Unit 33432), gas engine, automatic transmission, air conditioning, heat, Am/Fm radio, dually, 12' flatbed, wood sides, wood floor, LT215/85R16 tires, shows 49,021 miles. Notes: PLEASE ALLOW AT LEAST 60 DAYS FOR TITLE TRANSFER. Item Location: Independence, IA 50644 Equipment Sold "AS IS, WHERE IS": All equipment/property is sold "AS IS, WHERE IS" with no warranty or guarantees, expressed or implied, No operational assessments have been made by DPA Auctions on this item, it has been photographed ONLY.



#191 - DMI NH3 Tool Bar (PZ7553, Unit 5907A)

DMI NH3 Tool Bar (PZ7553, Unit 5907A), DMI 4250 15 knife tool bar, coulters, single disc sealers, hydraulic wings, flotation tires, rear hitch. Notes: Parts are missing on this tool bar. Item Location: Alexander, IA 50420 Equipment Sold "AS IS, WHERE IS": All equipment/property is sold "AS IS, WHERE IS" with no warranty or guarantees, expressed or implied, No operational assessments have been made by DPA Auctions on this item, it has been photographed ONLY.



#192 - Ranco U Trough Auger (PZ7554)

Ranco U Trough Auger (PZ7554), Ranco approx. 44' fiberglass u trough auger, Century 15 hp electric motor, Dodge drive. Notes: Item Location: Alexander, IA 50420 Equipment Sold "AS IS, WHERE IS": All equipment/property is sold "AS IS, WHERE IS" with no warranty or guarantees, expressed or implied, No operational assessments have been made by DPA Auctions on this item, it has been photographed ONLY.



#193 - 2006 Terra Gator 8104 (DR7369)

2006 Terra Gator 8104 (DR7369), Cat diesel engine, Terra Shift transmission, Air Max 1000 dry flow air system, 70' stainless steel boom, Raven SCS 4000 controller, light bar, foam markers, stainless steel foam tank, electric roll over tarp, AM/FM CD radio, cab heat/air conditioning, rear camera, 48X31.00-20 front tires, 66X43.00-25 rear tires, shows 4065 hours. Notes: Item Location: Cokato, MN 55321 Equipment Sold "AS IS, WHERE IS": All equipment/property is sold "AS IS, WHERE IS" with no warranty or guarantees, expressed or implied, No operational assessments have been made by DPA Auctions on this item, it has been photographed ONLY.



#194 - Case 1845C Skid Loader (PZ7557, Unit 781)

Case 1845C Skid Loader (PZ7557, Unit 781), diesel engine, hydrostatic transmission, cab, lights, 5' bucket, 10-16.5 tires, shows 2470 hours. Notes: Item Location: Alexander, IA 50420 Equipment Sold "AS IS, WHERE IS": All equipment/property is sold "AS IS, WHERE IS" with no warranty or guarantees, expressed or implied, No operational assessments have been made by DPA Auctions on this item, it has been photographed ONLY.



#195 - 2006 Chevrolet 1500 Extended Cab Pickup (PZ7552, Unit 127)

2006 Chevrolet 1500 Extended Cab Pickup (PZ7552, Unit 127), 4x4, gas engine, automatic transmission, air conditioning, heat, Am/Fm radio, cruise control, 265/70R17 tires, shows 232,018 miles. Notes: Item Location: Alexander, IA 50420 Equipment Sold "AS IS, WHERE IS": All equipment/property is sold "AS IS, WHERE IS" with no warranty or guarantees, expressed or implied, No operational assessments have been made by DPA Auctions on this item, it has been photographed ONLY.



#196 - Blu Jet NH3 Tool Bar (PZ7559, Unit 8133)

Blu Jet NH3 Tool Bar (PZ7559, Unit 8133), Blu Jet Landrunner 13 knife pull type tool bar, coulters, double disc sealers, hydraulic wings, 11L-15 flotation tires, rear hitch. Notes: Item Location: Hampton, IA 50441 Equipment Sold "AS IS, WHERE IS": All equipment/property is sold "AS IS, WHERE IS" with no warranty or guarantees, expressed or implied, No operational assessments have been made by DPA Auctions on this item, it has been photographed ONLY.



#197 - Blu Jet NH3 Tool Bar (PZ7560, Unit 8130)

Blu Jet NH3 Tool Bar (PZ7560, Unit 8130), Blu Jet Landrunner 13 knife pull type tool bar, coulters, double disc sealers, hydraulic wings, 11L-15 flotation tires, rear hitch. Notes: Item Location: Hampton, IA 50441 Equipment Sold "AS IS, WHERE IS": All equipment/property is sold "AS IS, WHERE IS" with no warranty or guarantees, expressed or implied, No operational assessments have been made by DPA Auctions on this item, it has been photographed ONLY.



#198 - Blu Jet NH3 Tool Bar (DR7356, Unit 4034A)

Blu Jet NH3 Tool Bar (DR7356, Unit 4034A), Blu Jet 13 knife pull type tool bar, hydraulic wings, flotation tires, rear hitch, wired for Raven. Notes: Item Location: Lyle, MN 55953 Equipment Sold "AS IS, WHERE IS": All equipment/property is sold "AS IS, WHERE IS" with no warranty or guarantees, expressed or implied, No operational assessments have been made by DPA Auctions on this item, it has been photographed ONLY.



#199 - DMI NH3 Tool Bar (DR7357, Unit 4073A)

DMI NH3 Tool Bar (DR7357, Unit 4073A), DMI 17 knife pull type tool bar, Raven Super coolers, hydraulic wings, 12.5-15 flotation tires, rear hitch. Notes: Item Location: Lyle, MN 55953 Equipment Sold "AS IS, WHERE IS": All equipment/property is sold "AS IS, WHERE IS" with no warranty or guarantees, expressed or implied, No operational assessments have been made by DPA Auctions on this item, it has been photographed ONLY.



#200 - Kawasaki Bayou 4 Wheeler (DR7354, Unit 4495)

Kawasaki Bayou 4 Wheeler (DR7354, Unit 4495), Kawasaki Bayou 220 4 wheeler, gas engine. Notes: Item Location: Lyle, MN 55953 Equipment Sold "AS IS, WHERE IS": All equipment/property is sold "AS IS, WHERE IS" with no warranty or guarantees, expressed or implied, No operational assessments have been made by DPA Auctions on this item, it has been photographed ONLY.



#201 - 1975 White Loader (DR7355, Unit 3607)

1975 White Loader (DR7355, Unit 3607), 1975 White loader, gas engine, hydrostatic transmission, canopy, forks. Notes: Has some oil leaks. Item Location: Lyle, MN 55953 Equipment Sold "AS IS, WHERE IS": All equipment/property is sold "AS IS, WHERE IS" with no warranty or guarantees, expressed or implied, No operational assessments have been made by DPA Auctions on this item, it has been photographed ONLY.



#202 - Nissan Forklift (PZ7558, Unit 721)

Nissan Forklift (PZ7558, Unit 721), Nissan 4000 forklift, LP gas engine, shuttle shift transmission, canopy, lights, 7.00-12 front tires, 6.90/6.00-9 rear tires, shows 6721 hours. Notes: Forklift is a NON runner, LP tank NOT included. Item Location: Chapin, IA 50427 Equipment Sold "AS IS, WHERE IS": All equipment/property is sold "AS IS, WHERE IS" with no warranty or guarantees, expressed or implied, No operational assessments have been made by DPA Auctions on this item, it has been photographed ONLY.



#203 - Grain Bunker Tarp (PZ7599)

Grain Bunker Tarp (PZ7599), 204' x 130' grain bunker tarp. Notes: New tarp Never been used. Item Location: Lacona, IA 50139 Equipment Sold "AS IS, WHERE IS": All equipment/property is sold "AS IS, WHERE IS" with no warranty or guarantees, expressed or implied, No operational assessments have been made by DPA Auctions on this item, it has been photographed ONLY.



#204 - Fiat Allis Loader (PZ7600, Unit 108)

Fiat Allis Loader (PZ7600, Unit 108), Fiat Allis 580FR, diesel engine (engine is locked up), shuttle shift transmission, cab, lights, 9' bucket, Titan 20.5-25 tires, shows 12,061 hours. Notes: Engine is locked up, crack in windshield. Item Location: Lacona, IA 50139 Equipment Sold "AS IS, WHERE IS": All equipment/property is sold "AS IS, WHERE IS" with no warranty or guarantees, expressed or implied, No operational assessments have been made by DPA Auctions on this item, it has been photographed ONLY.



#205 - 2009 Terra Gator 9203 (DR7370)

2009 Terra Gator 9203 (DR7370), Cat diesel engine, Air Max Precision2 dry air flow system, 70' stainless steel boom, Raven Viper Pro controller, Raven Smart Trax, light bar, foam markers, stainless steel foam tank, electric roll over tarp, 1050/50R32 tires, rear view camera, AM/FM CD radio, cab heat/air conditioning, shows 2814 hours. Notes: Item Location: Watkins, MN 55389 Equipment Sold "AS IS, WHERE IS": All equipment/property is sold "AS IS, WHERE IS" with no warranty or guarantees, expressed or implied, No operational assessments have been made by DPA Auctions on this item, it has been photographed ONLY.



#206 - LP Tank Mover (PZ7585, Unit 291)

LP Tank Mover (PZ7585, Unit 291), LP tank mover, single axle, 7.00-15 tires. Notes: Item Location: Hazleton, IA 50641 Equipment Sold "AS IS, WHERE IS": All equipment/property is sold "AS IS, WHERE IS" with no warranty or guarantees, expressed or implied, No operational assessments have been made by DPA Auctions on this item, it has been photographed ONLY.



#207 - LP Tank Mover (PZ7586, Unit 117)

LP Tank Mover (PZ7586, Unit 117), LP tank mover, electric winch, single axle, 7.50-16 tires. Notes: Item Location: Hazleton, IA 50641 Equipment Sold "AS IS, WHERE IS": All equipment/property is sold "AS IS, WHERE IS" with no warranty or guarantees, expressed or implied, No operational assessments have been made by DPA Auctions on this item, it has been photographed ONLY.



#208 - Running Gear (PZ7576)

Running Gear (PZ7576), Running gear, 5th wheel, 11L-15 flotation tires. Notes: Item Location: Janesville, IA 50647 Equipment Sold "AS IS, WHERE IS": All equipment/property is sold "AS IS, WHERE IS" with no warranty or guarantees, expressed or implied, No operational assessments have been made by DPA Auctions on this item, it has been photographed ONLY.



#209 - Running Gear (PZ7577)

Running Gear (PZ7577), Running gear, 5th wheel, 11L-15 flotation tires. Notes: Item Location: Janesville, IA 50647 Equipment Sold "AS IS, WHERE IS": All equipment/property is sold "AS IS, WHERE IS" with no warranty or guarantees, expressed or implied, No operational assessments have been made by DPA Auctions on this item, it has been photographed ONLY.



#210 - Running Gear (PZ7578)

Running Gear (PZ7578), Running gear, 5th wheel, 11L-15 flotation tires. Notes: Item Location: Janesville, IA 50647 Equipment Sold "AS IS, WHERE IS": All equipment/property is sold "AS IS, WHERE IS" with no warranty or guarantees, expressed or implied, No operational assessments have been made by DPA Auctions on this item, it has been photographed ONLY.



#211 - Running Gear (PZ7579)

Running Gear (PZ7579), Running gear, 5th wheel, 11L-15 flotation tires. Notes: Item Location: Janesville, IA 50647 Equipment Sold "AS IS, WHERE IS": All equipment/property is sold "AS IS, WHERE IS" with no warranty or guarantees, expressed or implied, No operational assessments have been made by DPA Auctions on this item, it has been photographed ONLY.



#212 - Running Gear (PZ7580)

Running Gear (PZ7580), Running gear, 5th wheel, 11L-15 flotation tires. Notes: Item Location: Janesville, IA 50647 Equipment Sold "AS IS, WHERE IS": All equipment/property is sold "AS IS, WHERE IS" with no warranty or guarantees, expressed or implied, No operational assessments have been made by DPA Auctions on this item, it has been photographed ONLY.



#213 - Running Gear (PZ7581)

Running Gear (PZ7581), Running gear, 5th wheel, 11L-15 flotation tires. Notes: Item Location: Janesville, IA 50647 Equipment Sold "AS IS, WHERE IS": All equipment/property is sold "AS IS, WHERE IS" with no warranty or guarantees, expressed or implied, No operational assessments have been made by DPA Auctions on this item, it has been photographed ONLY.



#214 - Running Gear (PZ7582)

Running Gear (PZ7582), Running gear, 5th wheel, 12.5L-15 flotation tires. Notes: Item Location: Janesville, IA 50647 Equipment Sold "AS IS, WHERE IS": All equipment/property is sold "AS IS, WHERE IS" with no warranty or guarantees, expressed or implied, No operational assessments have been made by DPA Auctions on this item, it has been photographed ONLY.



#215 - 2004 B & B Dry Tender Trailer (PZ7575, Unit 3526)

2004 B & B Dry Tender Trailer (PZ7575, Unit 3526), 2004 B & B tandem axle trailer, cheater axle, spring suspension, Willmar 24 ton dry tender box (S/N 24SSJN5114), side discharge auger, roll over tarp, 255/70R22.5 tires, 235/75R17.5 cheater tires. Notes: Item Location: West Union, IA 52175 Equipment Sold "AS IS, WHERE IS": All equipment/property is sold "AS IS, WHERE IS" with no warranty or guarantees, expressed or implied, No operational assessments have been made by DPA Auctions on this item, it has been photographed ONLY.



#216 - 2000 Volvo Truck (PZ7574, Unit T1023)

2000 Volvo Truck (PZ7574, Unit T1023), Cummins ISM diesel engine, Meritor RMX10-135C transmission, air conditioning, heat, Am/Fm CD stereo, cruise control, power windows & locks, tandem axle, full screw, air ride suspension, 5th wheel, shows 596,682 miles. Notes: Item Location: West Union, IA 52175 Equipment Sold "AS IS, WHERE IS": All equipment/property is sold "AS IS, WHERE IS" with no warranty or guarantees, expressed or implied, No operational assessments have been made by DPA Auctions on this item, it has been photographed ONLY.



#217 - 2008 Wilson Commander Grain Trailer (PZ7564, Unit 1574)

2008 Wilson Commander Grain Trailer (PZ7564, Unit 1574), 2008 Wilson Commander DWH-500C aluminum hopper bottom grain trailer, tandem axle, air ride suspension, roll over tarp, 11R24.5 tires. Notes: Item Location: Aplington, IA 50604 Equipment Sold "AS IS, WHERE IS": All equipment/property is sold "AS IS, WHERE IS" with no warranty or guarantees, expressed or implied, No operational assessments have been made by DPA Auctions on this item, it has been photographed ONLY.



#218 - 2005 Freightliner Columbia Dry Tender Truck (PZ7563, Unit 1056)

2005 Freightliner Columbia Dry Tender Truck (PZ7563, Unit 1056), Cat C-13 Acert diesel engine, 10 speed transmission, air conditioning, heat, Am/Fm CD stereo, cruise control, power windows & locks, engine brake, tandem axle, full screw, cheater axle, air ride suspension, Willmar 16 ton dry tender box, side discharge auger, all hydraulic, roll over tarp, 295/75R22.5 tires, 275/80R22.5 cheater tires, shows 725,468 miles. Notes: This truck has engine issues. Please call seller for further information. Item Location: Aplington, IA 50604 Equipment Sold "AS IS, WHERE IS": All equipment/property is sold "AS IS, WHERE IS" with no warranty or guarantees, expressed or implied, No operational assessments have been made by DPA Auctions on this item, it has been photographed ONLY.



#219 - 2013 Timpte Grain Trailer (PZ7601)

2013 Timpte Grain Trailer (PZ7601), 2013 Timpte Super Hopper 42' aluminum grain trailer, Hi-Flo ag hoppers, tandem axle, air ride suspension, 78" sides, vibrator package & vibrator, 2 rows of 9 LED lights & bullet, stainless steel front and back, roll over tarp, 11R24.5 tires, all aluminum wheels. Notes: Item Location: Alta, IA 51002 Equipment Sold "AS IS, WHERE IS": All equipment/property is sold "AS IS, WHERE IS" with no warranty or guarantees, expressed or implied, No operational assessments have been made by DPA Auctions on this item, it has been photographed ONLY.



#220 - 2008 Timpfe Grain Trailer (PZ7602)

2008 Timpfe Grain Trailer (PZ7602), 2008 Timpfe Super Hopper 42' aluminum grain trailer, tandem axle, air ride suspension, 78" sides, 2 rows of 5 lights, stainless steel back, stainless steel front corners, roll over tarp, 24 low pro tires, all aluminum wheels. Notes: Item Location: Alta, IA 51002 Equipment Sold "AS IS, WHERE IS": All equipment/property is sold "AS IS, WHERE IS" with no warranty or guarantees, expressed or implied, No operational assessments have been made by DPA Auctions on this item, it has been photographed ONLY.



#221 - 2000 Freightliner Classic Truck (PZ7561, Unit T447)

2000 Freightliner Classic Truck (PZ7561, Unit T447), Cummins N14 Plus diesel engine, 13 speed transmission, air conditioning, heat, Am/Fm cassette radio, cruise control, engine brake, tandem axle, full screw, air ride suspension, 5th wheel, wet kit, 11R22.5 tires, shows 667,762 miles. Notes: There is a miss in the motor, please contact seller for more information. Item Location: Eldora, IA 50627 Equipment Sold "AS IS, WHERE IS": All equipment/property is sold "AS IS, WHERE IS" with no warranty or guarantees, expressed or implied, No operational assessments have been made by DPA Auctions on this item, it has been photographed ONLY.



#222 - 1994 Freightliner Truck (PZ7562, Unit T200)

1994 Freightliner Truck (PZ7562, Unit T200), Cummins M11 diesel engine, 10 speed transmission, air conditioning, heat, Am/Fm cassette radio, cruise control, engine brake, tandem axle, full screw, air ride suspension, 5th wheel, sleeper, 275/80R22.5 front tires, 295/75R22.5 rear tires, shows 810,574 miles. Notes: Item Location: Eldora, IA 50627 Equipment Sold "AS IS, WHERE IS": All equipment/property is sold "AS IS, WHERE IS" with no warranty or guarantees, expressed or implied, No operational assessments have been made by DPA Auctions on this item, it has been photographed ONLY.



#223 - 2009 Terra Gator 8203 (DR7372)

2009 Terra Gator 8203 (DR7372), Cat diesel engine, Terra Shift transmission, Air Max Precision2 dry air flow system, 70' stainless steel boom, Raven Smart Trax, light bar, foam markers, stainless steel foam tank, electric roll over tarp, AM/FM CD radio, cab heat/air conditioning, 1000/50R25 tires, shows 2739 hours. Notes: Item Location: Saint Martin, MN 56376 Equipment Sold "AS IS, WHERE IS": All equipment/property is sold "AS IS, WHERE IS" with no warranty or guarantees, expressed or implied, No operational assessments have been made by DPA Auctions on this item, it has been photographed ONLY.



#224 - 1988 Ford L9000 Truck (PZ7550, Unit 230)

1988 Ford L9000 Truck (PZ7550, Unit 230), Cat diesel engine, manual transmission, heat, Am/Fm cassette radio, tandem axle, full screw, 425/65R22.5 front tires, 11R22.5 rear tires, shows 676,331 miles. Notes: Item Location: Garner, IA 50438 Equipment Sold "AS IS, WHERE IS": All equipment/property is sold "AS IS, WHERE IS" with no warranty or guarantees, expressed or implied, No operational assessments have been made by DPA Auctions on this item, it has been photographed ONLY.



#225 - 2000 Volvo Truck (NP5720, Unit 438)

2000 Volvo Truck (NP5720, Unit 438), Cummins ISM diesel engine, Eaton Fuller 10 speed transmission, heat, air conditioning, air ride cab, tandem axle, air ride suspension, 5th wheel, 295/75R22.5 tires, shows 527,529 miles. Notes: Item Location: Alburnett, IA 52202 Equipment Sold "AS IS, WHERE IS": All equipment/property is sold "AS IS, WHERE IS" with no warranty or guarantees, expressed or implied, No operational assessments have been made by DPA Auctions on this item, it has been photographed ONLY.



#226 - 1992 Ford L8000 Dry Tender Truck (PZ7565, Unit 237)

1992 Ford L8000 Dry Tender Truck (PZ7565, Unit 237), diesel engine, manual transmission, heat, Am/Fm radio, single axle, 10 ton dry tender box, rear discharge auger, all hydraulic, roll over tarp, 11R22.5 tires, shows 333,601 miles. Notes: This truck has electrical issues and rear discharge auger is sized up. Please contact seller for further information. Item Location: Allison, IA 50602 Equipment Sold "AS IS, WHERE IS": All equipment/property is sold "AS IS, WHERE IS" with no warranty or guarantees, expressed or implied, No operational assessments have been made by DPA Auctions on this item, it has been photographed ONLY.



#227 - 1987 Ford L9000 Liquid Nurse Truck (PZ7584, Unit 225)

1987 Ford L9000 Liquid Nurse Truck (PZ7584, Unit 225), Cat diesel engine, 9 speed transmission, heat, Am/Fm radio, tandem axle, full screw, 3200 gallon 2 compartment fiberglass liquid nurse tank, pump, 11R22.5 tires, shows 194,203 miles. Notes: Item Location: Sumner, IA 50674 Equipment Sold "AS IS, WHERE IS": All equipment/property is sold "AS IS, WHERE IS" with no warranty or guarantees, expressed or implied, No operational assessments have been made by DPA Auctions on this item, it has been photographed ONLY.



#228 - 92 Bags of Clay (PZ7583)

92 Bags of Clay (PZ7583), 92 bags of Floridin MIN-U-GEL 200, 50 lbs each. Notes: Item Location: Sumner, IA 50674 Equipment Sold "AS IS, WHERE IS": All equipment/property is sold "AS IS, WHERE IS" with no warranty or guarantees, expressed or implied, No operational assessments have been made by DPA Auctions on this item, it has been photographed ONLY.



#229 - 2008 Chevrolet 1500 Extended Cab Pickup (PZ7551, Unit 192)

2008 Chevrolet 1500 Extended Cab Pickup (PZ7551, Unit 192), 4x4, gas engine, automatic transmission, air conditioning, heat, Am/Fm CD stereo, cruise control, power locks, LT265/70R17 tires, shows 190,588 miles. Notes: Item Location: Thornton, IA 50479 Equipment Sold "AS IS, WHERE IS": All equipment/property is sold "AS IS, WHERE IS" with no warranty or guarantees, expressed or implied, No operational assessments have been made by DPA Auctions on this item, it has been photographed ONLY.



#231 - 2005 GVM Prowler (NJP458)

2005 GVM Prowler (NJP458), diesel engine, automatic transmission, DD-95T stainless steel hydraulic dry spinner box, roll over tarp, AM/FM CD radio, cab heat/air conditioning, 650/75R32 float tires, wired for Viper Pro, shows 5613 hours. Notes: Torque converter is OUT. Item Location: Elk Mound, WI 54739 Equipment Sold "AS IS, WHERE IS": All equipment/property is sold "AS IS, WHERE IS" with no warranty or guarantees, expressed or implied, No operational assessments have been made by DPA Auctions on this item, it has been photographed ONLY.



#233 - 1975 Trinity Storage Tank (NJP446)

1975 Trinity Storage Tank (NJP446), 30,000 gallon Nh3 storage tank, on concrete saddles, magnetic float gauge, top manway access, includes motor and pump, 2 station loadouts. Notes: Dismantle, removal and liability of this tank is the responsibility of the buyer. This tank needs to be removed by February 1, 2018. Item Location: Elk Mound, WI 54739 Equipment Sold "AS IS, WHERE IS": All equipment/property is sold "AS IS, WHERE IS" with no warranty or guarantees, expressed or implied, No operational assessments have been made by DPA Auctions on this item, it has been photographed ONLY.



#234 - Beaird Nh3 Storage Tank (NJP449)

Beaird Nh3 Storage Tank (NJP449), 30,000 gallon Nh3 storage tank, on concrete saddles, magnetic float gauge, includes motor and pump, 2 station loadouts. Notes: Was a LP tank converted to Nh3 for several years. Dismantle, removal and liability of this tank is the responsibility of the buyer. This tank needs to be removed by February 1, 2018. Item Location: Chippewa Falls, WI 54729 Equipment Sold "AS IS, WHERE IS": All equipment/property is sold "AS IS, WHERE IS" with no warranty or guarantees, expressed or implied, No operational assessments have been made by DPA Auctions on this item, it has been photographed ONLY.



#235 - Kraus Conveyor (NJP457)

Kraus Conveyor (NJP457), approximately 42' stainless steel portable conveyor, set up for electric drive NO MOTOR. Notes: Item Location: Elk Mound, WI 54739 Equipment Sold "AS IS, WHERE IS": All equipment/property is sold "AS IS, WHERE IS" with no warranty or guarantees, expressed or implied, No operational assessments have been made by DPA Auctions on this item, it has been photographed ONLY.



#236 - Bagger (NJP442)

Bagger (NJP442), dry fertilizer bagging system, overhead hopper. Notes: Item Location: Elk Mound, WI 54739 Equipment Sold "AS IS, WHERE IS": All equipment/property is sold "AS IS, WHERE IS" with no warranty or guarantees, expressed or implied, No operational assessments have been made by DPA Auctions on this item, it has been photographed ONLY.



#237 - Stainless Steel Tank (NJP455)

Stainless Steel Tank (NJP455), 1,200 gallon conical stainless steel liquid tank, sparge line. Notes: Item Location: Elk Mound, WI 54739 Equipment Sold "AS IS, WHERE IS": All equipment/property is sold "AS IS, WHERE IS" with no warranty or guarantees, expressed or implied, No operational assessments have been made by DPA Auctions on this item, it has been photographed ONLY.



#238 - Row Crop Tires (NJP451)

Row Crop Tires (NJP451), (4) 380/90R46 row crop tires mounted on 10 bolt rims. Notes: Item Location: Elk Mound, WI 54739 Equipment Sold "AS IS, WHERE IS": All equipment/property is sold "AS IS, WHERE IS" with no warranty or guarantees, expressed or implied, No operational assessments have been made by DPA Auctions on this item, it has been photographed ONLY.



#239 - Row Crop Tires (NJP452)

Row Crop Tires (NJP452), (2) 380/85R46 row crop tires. Notes: Item Location: Elk Mound, WI 54739 Equipment Sold "AS IS, WHERE IS": All equipment/property is sold "AS IS, WHERE IS" with no warranty or guarantees, expressed or implied, No operational assessments have been made by DPA Auctions on this item, it has been photographed ONLY.



#240 - (2) Floater Tires (NJP453)

(2) Floater Tires (NJP453), 48X25.00-20 front floater tire mounted on rim, and 54X31.00-26 front floater tire. Notes: Item Location: Elk Mound, WI 54739 Equipment Sold "AS IS, WHERE IS": All equipment/property is sold "AS IS, WHERE IS" with no warranty or guarantees, expressed or implied, No operational assessments have been made by DPA Auctions on this item, it has been photographed ONLY.



#241 - Floater Tires (NJP454)

Floater Tires (NJP454), (2) 66X43.00-25 rear floater tires. Notes: Item Location: Elk Mound, WI 54739 Equipment Sold "AS IS, WHERE IS": All equipment/property is sold "AS IS, WHERE IS" with no warranty or guarantees, expressed or implied, No operational assessments have been made by DPA Auctions on this item, it has been photographed ONLY.



#242 - Brute II Bumper (NJP447)

Brute II Bumper (NJP447), chrome rear cushion ag bumper. Notes: Item Location: Elk Mound, WI 54739 Equipment Sold "AS IS, WHERE IS": All equipment/property is sold "AS IS, WHERE IS" with no warranty or guarantees, expressed or implied, No operational assessments have been made by DPA Auctions on this item, it has been photographed ONLY.



#243 - Ag Bumper (NJP448)

Ag Bumper (NJP448), rear cushion ag bumper. Notes: Item Location: Elk Mound, WI 54739 Equipment Sold "AS IS, WHERE IS": All equipment/property is sold "AS IS, WHERE IS" with no warranty or guarantees, expressed or implied, No operational assessments have been made by DPA Auctions on this item, it has been photographed ONLY.



#244 - (2) Ag Bumpers (NJP450)

(2) Ag Bumpers (NJP450), (2) rear cushion ag bumper. Notes: Item Location: Elk Mound, WI 54739 Equipment Sold "AS IS, WHERE IS": All equipment/property is sold "AS IS, WHERE IS" with no warranty or guarantees, expressed or implied, No operational assessments have been made by DPA Auctions on this item, it has been photographed ONLY.



#245 - 2014 Case Puma 200 CVT Tractor (NJP228)

2014 Case Puma 200 CVT Tractor (NJP228), diesel engine, power shuttle transmission, cab, heat, air conditioning, Am/Fm radio, leather seat, front weight rack/weights, 80R46 rear tires, 85R34 front tires, 4 port hydraulics, PTO, 3 point hitch, set of rear duals, 2,200lbs of rear wheel weights, shows 430 hours. Notes: Item Location: Greeley, CO 80633 Equipment Sold "AS IS, WHERE IS": All equipment/property is sold "AS IS, WHERE IS" with no warranty or guarantees, expressed or implied, No operational assessments have been made by DPA Auctions on this item, it has been photographed ONLY.



#246 - Waconia Blending Tower (DR-5233)

Waconia Blending Tower (DR-5233), 8 ton Waconia dry blender, overhead fertilizer bins, (6) 13 ton bins, (3) 3 ton bins, all controls, digital scale head, 25' cross conveyor for loadout, trip bagger and conveyor table, DOES NOT INCLUDE BAG SEWER. It was in working order and left so it will still run if you wish to see it run. They have manuals, diagrams and skimatics. Notes: Dismantle, removal, and liability of this tower will be the responsibility of the buyer. This tower needs removed by February 1, 2018. Buyer will need to provide proof of insurance. Item Location: Saint Martin, MN 56376 Equipment Sold "AS IS, WHERE IS": All equipment/property is sold "AS IS, WHERE IS" with no warranty or guarantees, expressed or implied, No operational assessments have been made by DPA Auctions on this item, it has been photographed ONLY.



#247 - Waconia Blending Tower (DR-5242)

Waconia Blending Tower (DR-5242), 8 ton blender, overhead storage. Notes: Dismantle, removal, and liability of this tower will be the responsibility of the buyer. This tower needs removed by February 1, 2018. Buyer will need to provide proof of insurance. Item Location: Little Falls, MN 56345 Equipment Sold "AS IS, WHERE IS": All equipment/property is sold "AS IS, WHERE IS" with no warranty or guarantees, expressed or implied, No operational assessments have been made by DPA Auctions on this item, it has been photographed ONLY.



#250 - 1997 IHC 4700 (NJP461)

1997 IHC 4700 (NJP461), DT466 diesel engine, 6 speed transmission, air brakes, single axle, 11R-22.5 tires, hose reel NO HOSE, NO METER, 2800 gallon LP delivery tank, magnetic float gauge, AM/FM radio, air conditioning, cruise control, shows 340,333 miles. Notes: Item Location: Morris, MN 56267 Equipment Sold "AS IS, WHERE IS": All equipment/property is sold "AS IS, WHERE IS" with no warranty or guarantees, expressed or implied, No operational assessments have been made by DPA Auctions on this item, it has been photographed ONLY.



#251 - Convey all (DR7376)

Convey all (DR7376), model TC1055, 55' X 10" portable seed conveyor, cleated belt, 10hp 3 phase electric drive motor. Notes: Item Location: Goodhue, MN 55027 Equipment Sold "AS IS, WHERE IS": All equipment/property is sold "AS IS, WHERE IS" with no warranty or guarantees, expressed or implied, No operational assessments have been made by DPA Auctions on this item, it has been photographed ONLY.



#252 - Conveyall Undercar (DR7377)

Conveyall Undercar (DR7377), model UBG1014, 14' X 10" portable jump conveyor, 3 phase electric drive motor, cleated belt. Notes: Item Location: Goodhue, MN 55027 Equipment Sold "AS IS, WHERE IS": All equipment/property is sold "AS IS, WHERE IS" with no warranty or guarantees, expressed or implied, No operational assessments have been made by DPA Auctions on this item, it has been photographed ONLY.



#255 - 1967 Flint Steel NH3 Storage tank

1967 Flint Steel NH3 Storage tank, 12,000 gal storage tank, on stands, data plate legible, National Board # 554112. Notes: Plumbing NOT INCLUDED. Item Location: Nemaha, NE 68414 Equipment Sold "AS IS, WHERE IS": All equipment/property is sold "AS IS, WHERE IS" with no warranty or guarantees, expressed or implied, No operational assessments have been made by DPA Auctions on this item, it has been photographed ONLY.



#256 - New 2013 CT Fab Tender Unit (KMK1309)

New 2013 CT Fab Tender Unit (KMK1309), new, never used tender unit, 1100 cu/ft. capacity, 8" Westfield rear discharge auger, slide gate above auger, unit is setup to fill with Pneumatics with filter box on exhaust air or can be filled from top, totally sealed/weather proof, 20" top manway, 20" bottom manway for access or clean out, (4) four adjustable legs for parking, spring suspension, brand new dual tires, 11R-22.5, hub pilot steel wheels. Notes: No auger motor or drive pulleys, no motor switch or HV wiring, unit is titled and DOT compliant. However, unit was designed to store product in a stationary position and was not intended to transport a load on the highway. Item Location: Belleville, KS 66935 Equipment Sold "AS IS, WHERE IS": All equipment/property is sold "AS IS, WHERE IS" with no warranty or guarantees, expressed or implied, No operational assessments have been made by DPA Auctions on this item, it has been photographed ONLY.



#257 - New 2013 CT Fab Tender Unit (KMK1308)

New 2013 CT Fab Tender Unit (KMK1308), new, never used tender unit, 1100 cu/ft. capacity, 480V 3ph 5HP electric motor, belt & pulley drive, 8" Westfield rear discharge auger, slide gate above auger, unit is setup to fill with Pneumatics with filter box on exhaust air or can be filled from top, totally sealed/weather proof, 20" top manway, 20" bottom manway for access or clean out, (4) four adjustable legs for parking, spring suspension, brand new dual tires, 11R-22.5, hub pilot steel wheels. Notes: No motor switch or HV wiring, unit is titled and DOT compliant. However, unit was designed to store product in a stationary position and was not intended to transport a load on the highway. Item Location: Belleville, KS 66935 Equipment Sold "AS IS, WHERE IS": All equipment/property is sold "AS IS, WHERE IS" with no warranty or guarantees, expressed or implied, No operational assessments have been made by DPA Auctions on this item, it has been photographed ONLY.



#258 - 2013 Brock's Quantum Dryer Controller (KMK354)

2013 Brock's Quantum Dryer Controller (KMK354), provides total dryer management, accurately controls grain moisture during the drying process, compatible with Brock dryers, Meyer Energy Miser, Super B Energy Miser, and SQ series dryers, includes pre-wired controller shed, complete Quantum controller electrical installation and wiring diagrams. Notes: Thins item must be removed by November 30th 2017 with no exceptions. Dismantle, removal and transportation is at the exence, risk and liability of the buyer. Item Location: Nichols, IA 52766 Equipment Sold "AS IS, WHERE IS": All equipment/property is sold "AS IS, WHERE IS" with no warranty or guarantees, expressed or implied, No operational assessments have been made by DPA Auctions on this item, it has been photographed ONLY.



#259 - 1996 Super B Energy Miser Grain Dryer (KMK353)

1996 Super B Energy Miser Grain Dryer (KMK353), approx. 24', set up for LP or natural gas, Baldor motor, stands for unit, model # AFP 402. Notes: Thins item must be removed by November 30th 2017 with no exceptions. Dismantle, removal and transportation is at the exence, risk and liability of the buyer. Item Location: Nichols, IA 52766 Equipment Sold "AS IS, WHERE IS": All equipment/property is sold "AS IS, WHERE IS" with no warranty or guarantees, expressed or implied, No operational assessments have been made by DPA Auctions on this item, it has been photographed ONLY.



#260 - Speed King 240 Seed Tender (KMK352)

Speed King 240 Seed Tender (KMK352), 240 bushel capacity, Honda GX160 motor, gas, 5.5 hp., Hoot Ridge trailer, tandem axle, ST 235/ 80 R16 tires, ball hitch, trailer connector. Notes: 15589 Item Location: Nichols, IA 52766 Equipment Sold "AS IS, WHERE IS": All equipment/property is sold "AS IS, WHERE IS" with no warranty or guarantees, expressed or implied, No operational assessments have been made by DPA Auctions on this item, it has been photographed ONLY.



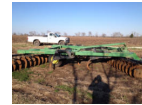
#261 - 2013 Hagie Nitrogen Toolbar (CG383)

2013 Hagie Nitrogen Toolbar (CG383), 40', 16 row nitrogen toolbar, two sets of nozzles, all rows are ready to be mounted on the bar for use, all parts were replaced immediately when needed. Notes: Item Location: Midway, TX 75852 Equipment Sold "AS IS, WHERE IS": All equipment/property is sold "AS IS, WHERE IS" with no warranty or guarantees, expressed or implied, No operational assessments have been made by DPA Auctions on this item, it has been photographed ONLY.



#262 - 1998 John Deere 510 Disc Ripper (CG382)

1998 John Deere 510 Disc Ripper (CG382), it has two new lift cylinders and points, tires are in good shape and the wheels were replaced last year and no acres on them, bearings are in good shape, blades are in fair shape, no welds. Notes: Item Location: Midway, TX 75852 Equipment Sold "AS IS, WHERE IS": All equipment/property is sold "AS IS, WHERE IS" with no warranty or guarantees, expressed or implied, No operational assessments have been made by DPA Auctions on this item, it has been photographed ONLY.



#263 - Mobil Seed Cleaner Super X298D Clipper (AL183)

Mobil Seed Cleaner Super X298D Clipper (AL183), fed by an intake auger with speed adjustable, (reversible as well) hydraulics. +10 different screen sizes go ahold with the unit, all motors are hydraulic and have their own speed control, ran by a 4BT Cummins engine, power take off has a direct drive to the Clipper and a hydraulic pump for the other motors, 2 ideal indents set up to take out wild oats or larger/longer than wheat or barley, final leg drops into an auger that loads the truck, triple axle trailer, two speed jacks in front and leveling jacks in back, equipment will handle 300 bu/hr. Notes: Rides very smooth, the hydraulic pump needs some tuning in order to get everything able to run 300 bu/hr. Truck not included. Item Location: Idaho Falls, ID 83406 Equipment Sold "AS IS, WHERE IS": All equipment/property is sold "AS IS, WHERE IS" with no warranty or guarantees, expressed or implied, No operational assessments have been made by DPA Auctions on this item, it has been photographed ONLY.



#264 - 1996 Ford Louisville Cab/Chassis (NP5774, Unit 09987)

1996 Ford Louisville Cab/Chassis (NP5774, Unit 09987), 6HT diesel engine, straight 5 speed manual transmission, Am/Fm radio, single axle, spring suspension, 11R22.5 rear tires (30% - 40%), 11R22.5 front tires (60%), shows 32,656 miles. Notes: PLEASE ALLOW AT LEAST 60 DAYS FOR TITLE TRANSFER. Item Location: Breda, IA 51436 Equipment Sold "AS IS, WHERE IS": All equipment/property is sold "AS IS, WHERE IS" with no warranty or guarantees, expressed or implied, No operational assessments have been made by DPA Auctions on this item, it has been photographed ONLY.



#265 - 2012 MWT3100 Vertigo Earthmaster (PD530)

2012 MWT3100 Vertigo Earthmaster (PD530), vertical till, less than 2000 acres use, blades measure 19.5" + front and rear, bearings and rollers all roll free, very good shape, always shedded, field ready. Notes: Item Location: Moberly, MO 65270 Equipment Sold "AS IS, WHERE IS": All equipment/property is sold "AS IS, WHERE IS" with no warranty or guarantees, expressed or implied, No operational assessments have been made by DPA Auctions on this item, it has been photographed ONLY.



#266 - New Rhino Dual Bale Spikes (PD537)

New Rhino Dual Bale Spikes (PD537), for euro hookup loaders. Notes: Item Location: Moberly, MO 65270 Equipment Sold "AS IS, WHERE IS": All equipment/property is sold "AS IS, WHERE IS" with no warranty or guarantees, expressed or implied, No operational assessments have been made by DPA Auctions on this item, it has been photographed ONLY.



#267 - NewCub Cadet Grass Catcher (PD533)

Cub Cadet Grass Catcher (PD533), for a Z-Force zero turn. Notes: Item Location: Moberly, MO 65270 Equipment Sold "AS IS, WHERE IS": All equipment/property is sold "AS IS, WHERE IS" with no warranty or guarantees, expressed or implied, No operational assessments have been made by DPA Auctions on this item, it has been photographed ONLY.



#268 - Quicke Loader to Skid Steer Adaptor (PD536)

Quicke Loader to Skid Steer Adaptor (PD536). Notes: Item Location: Moberly, MO 65270 Equipment Sold "AS IS, WHERE IS": All equipment/property is sold "AS IS, WHERE IS" with no warranty or guarantees, expressed or implied, No operational assessments have been made by DPA Auctions on this item, it has been photographed ONLY.



#269 - New Holland TC35 Tractor (PD538)

New Holland TC35 Tractor (PD538), less than 800 hours, rear tires 60%, 12 x 12 synchro shuttle, 3 cylinder, diesel, 33 engine HP, 2 owner, 2 wheel drive, independent 540 PTO, rollover ROPS, 3 pt hitch, power steering. Notes: Item Location: Moberly, MO 65270 Equipment Sold "AS IS, WHERE IS": All equipment/property is sold "AS IS, WHERE IS" with no warranty or guarantees, expressed or implied, No operational assessments have been made by DPA Auctions on this item, it has been photographed ONLY.



#270 - 1940 H Farmall Tractor (PD534)

1940 H Farmall Tractor (PD534), shed collector's style, Magneto has no fire, engine is stuck, it has turned over, rear tire 80%, front tire good, Lots of parts or good fixer-upper. Notes: Item Location: Moberly, MO 65270 Equipment Sold "AS IS, WHERE IS": All equipment/property is sold "AS IS, WHERE IS" with no warranty or guarantees, expressed or implied, No operational assessments have been made by DPA Auctions on this item, it has been photographed ONLY.



#271 - 2005 Case IH JX75 Tractor (PD535)

2005 Case IH JX75 Tractor (PD535), 2600 hours, LX232 Case loader, 238 CID, 4 cylinder, 62 PTO HP, 12F/12R synchro shuttle MF WD, cab, air, 540 Ind. PTO, 2 hydraulic hookups, one owner, never used in field, used for motorcross track purposes, front tires 5%, rear tires 50 %, new clutch put in, new shuttle. Notes: Item Location: Moberly, MO 65270 Equipment Sold "AS IS, WHERE IS": All equipment/property is sold "AS IS, WHERE IS" with no warranty or guarantees, expressed or implied, No operational assessments have been made by DPA Auctions on this item, it has been photographed ONLY.



#273 - 1979 Fiat Allis 745B (DR7375)

1979 Fiat Allis 745B (DR7375), diesel engine, hydrostatic shuttle shift, enclosed cab, counter weight, cab heat, 20.5-25 tires. Notes: All functions work as they should. Item Location: Prior Lake, MN 55372 Equipment Sold "AS IS, WHERE IS": All equipment/property is sold "AS IS, WHERE IS" with no warranty or guarantees, expressed or implied, No operational assessments have been made by DPA Auctions on this item, it has been photographed ONLY.



#274 - Weigh Wagon (PZ7606, Unit T264)

Weigh Wagon (PZ7606, Unit T264), Weigh wagon, gas engine, Weigh Tronix digital readout, side discharge auger, single axle. Notes: Item Location: De Witt, IA 52742 Equipment Sold "AS IS, WHERE IS": All equipment/property is sold "AS IS, WHERE IS" with no warranty or guarantees, expressed or implied, No operational assessments have been made by DPA Auctions on this item, it has been photographed ONLY.



#275 - 1997 Chevrolet 2500 Pickup (PZ7605, Unit T167)

1997 Chevrolet 2500 Pickup (PZ7605, Unit T167), 4x4, gas engine, automatic transmission, air conditioning, heat, Am/Fm radio, cruise control, running boards, rear lift, LT265/75R16 tires, shows 161,920 miles. Notes: Item Location: De Witt, IA 52742 Equipment Sold "AS IS, WHERE IS": All equipment/property is sold "AS IS, WHERE IS" with no warranty or guarantees, expressed or implied, No operational assessments have been made by DPA Auctions on this item, it has been photographed ONLY.



#276 - LP Tank (PZ7603)

LP Tank (PZ7603), 1000 gallon LP tank, has not been used for 10 years. Notes: Item Location: Lake Mills, IA 50450 Equipment Sold "AS IS, WHERE IS": All equipment/property is sold "AS IS, WHERE IS" with no warranty or guarantees, expressed or implied, No operational assessments have been made by DPA Auctions on this item, it has been photographed ONLY.



#277 - 1993 Timpfe Super Hopper Trailer (PD539)

1993 Timpfe Super Hopper Trailer (PD539), 43 foot aluminum trailer, air suspension, roll tarp, good tires, front/rear ladders. Notes: Item Location: Springfield, IL 62711 Equipment Sold "AS IS, WHERE IS": All equipment/property is sold "AS IS, WHERE IS" with no warranty or guarantees, expressed or implied, No operational assessments have been made by DPA Auctions on this item, it has been photographed ONLY.



#278 - Liquid Nurse Trailer (PZ7607)

Liquid Nurse Trailer (PZ7607), 1000 gallon stainless steel liquid nurse tank, tandem axle gear. Notes: Item Location: De Witt, IA 52742 Equipment Sold "AS IS, WHERE IS": All equipment/property is sold "AS IS, WHERE IS" with no warranty or guarantees, expressed or implied, No operational assessments have been made by DPA Auctions on this item, it has been photographed ONLY.



#279 - 1989 Smeal Chevrolet Pumper Fire Truck (MH227)

1989 Smeal Chevrolet Pumper Fire Truck (MH227), Vanguard Series Fire Truck with a 427 drive engine, 454 pump engine, pump and roll, 750 gpm pump, waterous, 1000 gallon tank with 10 gauge rolled steel, 35 foot 3 section aluminum ladder, 16 foot roof ladder, (2) two 10 foot sections of 4 1/2 inch hard suction with low level strainer, (2) two 10 foot sections of 2 1/2 inch hard suction, Dyna Model DP4500E generator, shows 14071 miles. Notes: Last pump test was done August 2016, seller has Manufacturer's Pumper Construction Records. Item Location: Anamosa, IA 52205 Equipment Sold "AS IS, WHERE IS": All equipment/property is sold "AS IS, WHERE IS" with no warranty or guarantees, expressed or implied, No operational assessments have been made by DPA Auctions on this item, it has been photographed ONLY.



#280 - 1980 Brush Queen Skid (MH228)

1980 Brush Queen Skid (MH228), 18hp Wisconsin engine, 200 gallon poly tank, Hannay hose reel, 100 foot of booster hose, foam capability, (1) one 1 1/2 inch discharge, S/N: 5888513 for motor. Notes: Pump was rebuilt by Alexis Fire, but year it was done is unknown. Item Location: Anamosa, IA 52205 Equipment Sold "AS IS, WHERE IS": All equipment/property is sold "AS IS, WHERE IS" with no warranty or guarantees, expressed or implied, No operational assessments have been made by DPA Auctions on this item, it has been photographed ONLY.



#281 - 2009 Case IH 5310 Strip Till Bar (EG331)

2009 Case IH 5310 Strip Till Bar (EG331), 16 Row, 30" bar, single cutter, mole knife, spring loaded closing discs, spring loaded trailing contour rolling baskets, has hitch on it for Montag box, brand new rear hitch for AA wagon available, new set of mole knives included, bar was purchased new and used on our own farm, Excellent condition. Notes: Item Location: Kingman, IN 47952 Equipment Sold "AS IS, WHERE IS": All equipment/property is sold "AS IS, WHERE IS" with no warranty or guarantees, expressed or implied, No operational assessments have been made by DPA Auctions on this item, it has been photographed ONLY.



#282 - 2012 Volvo Automatic VNL (EG327)

2012 Volvo Automatic VNL (EG327), D13 455 HP, ATO Volvo Auto Transmission, Radio, AC and heat all in working order, good tires 295/75/R22.5, unit has a good refrigerator, clean and great running truck, shows 541980 miles. Notes: Item Location: Fort Dodge, IA 50501 Equipment Sold "AS IS, WHERE IS": All equipment/property is sold "AS IS, WHERE IS" with no warranty or guarantees, expressed or implied, No operational assessments have been made by DPA Auctions on this item, it has been photographed ONLY.



#283 - 2006 Mack 600CXN (EG321)

2006 Mack 600CXN (EG321), Mack 480 HP with engine brake, 13 speed with overdrive, Wet Kit and PTO installed, Panasonic radio with USB, dual chrome exhaust, 295/75R/22.5 tires in good shape, A/C and heat both work, semi has paint peel starting on left side and right side but no dents, good running truck, shows 783,500 miles. Notes: Item Location: Fort Dodge, IA 50501 Equipment Sold "AS IS, WHERE IS": All equipment/property is sold "AS IS, WHERE IS" with no warranty or guarantees, expressed or implied, No operational assessments have been made by DPA Auctions on this item, it has been photographed ONLY.



#284 - 2013 John Deere 4940 Sprayer (KMK323)

2013 John Deere 4940 Sprayer (KMK323), self-propelled, John Deere diesel engine, hydrostatic transmission, heat, air conditioning, Am/Fm radio, 1200 stainless steel educator system, 120' boom, 20" spacing, boom leveling, foam maker, traction control, poly tank, hydraulic tread adjust, John Deere Swath control, StarFire 3000 Globe, GreenStar 3 monitor, halogen light package, 480/80R50 tires, all wheel drive, 710-46 floater tires and wheels, shows miles, shows 1258 hours. Notes: Extra narrow tires are included. Item Location: Geneseo, ID 83832 Equipment Sold "AS IS, WHERE IS": All equipment/property is sold "AS IS, WHERE IS" with no warranty or guarantees, expressed or implied, No operational assessments have been made by DPA Auctions on this item, it has been photographed ONLY.



#285 - 2016 Sudenga Grain Super Scoop (PZ7270)

2016 Sudenga Grain Super Scoop (PZ7270), 2016 Sudenga grain super scoop, 11,000 bushels per hour, 16" x 10' long intake, hydraulic spout, custom made gauge wheels that control the intake height, discharge height 11'5" to 21'5", discharge reach 19'4", transport height 13'5". Notes: Seller added gauge wheels last summer, only used to load grain 1 season, it is in like New condition. seller will assist with loading. Item Location: Knoxville, IA 50138 Equipment Sold "AS IS, WHERE IS": All equipment/property is sold "AS IS, WHERE IS" with no warranty or guarantees, expressed or implied, No operational assessments have been made by DPA Auctions on this item, it has been photographed ONLY.



#286 - 1600 Gallon Stainless Steel Tank and Saddle (EG329)

1600 Gallon Stainless Steel Tank and Saddle (EG329), full taper sump, agitation, rinse bar, removed from Terra Gator, frame trailer NOT INCLUDED. Notes: Trailer is NOT included. Item Location: Center Point, IA 52213 Equipment Sold "AS IS, WHERE IS": All equipment/property is sold "AS IS, WHERE IS" with no warranty or guarantees, expressed or implied, No operational assessments have been made by DPA Auctions on this item, it has been photographed ONLY.



#287 - 1978 Frame Trailer (EG330)

1978 Frame Trailer (EG330), tandem axle, steel frame trailer, 10.00-20 tires, Stainless steel tank NOT INCLUDED, Notes: Stainless Tank is NOT included. Item Location: Center Point, IA 52213 Equipment Sold "AS IS, WHERE IS": All equipment/property is sold "AS IS, WHERE IS" with no warranty or guarantees, expressed or implied, No operational assessments have been made by DPA Auctions on this item, it has been photographed ONLY.



#288 - 1992 Ford F350 Dually (EG328)

1992 Ford F350 Dually (EG328), 5 speed, AM/FM with remote, Micro lock, 4 door, rebuilt front end, new front brakes, high speed rear end, sliding rear window, flatbed with gooseneck ball and receiver hitch, speedometer is inoperable, shows unknown miles. Notes: Item Location: Center Point, IA 52213 Equipment Sold "AS IS, WHERE IS": All equipment/property is sold "AS IS, WHERE IS" with no warranty or guarantees, expressed or implied, No operational assessments have been made by DPA Auctions on this item, it has been photographed ONLY.



#289 - Case 580 Super L Backhoe (KMK365)

Case 580 Super L Backhoe (KMK365), diesel engine, Shuttle Shift transmission, Extenda-Hoe, front loader bucket, 82" bucket, toothed backhoe bucket, ROPS, outriggers, two door cab, cab heat and air conditioning, 12 x 16.5 front tires, 19.5L - 24 rear tires, shows 7295 hours. Notes: Item Location: Neola, IA 51559 Equipment Sold "AS IS, WHERE IS": All equipment/property is sold "AS IS, WHERE IS" with no warranty or guarantees, expressed or implied, No operational assessments have been made by DPA Auctions on this item, it has been photographed ONLY.



#290 - Sullair 100Q Portable Air Compressor (KMK363)

Sullair 100Q Portable Air Compressor (KMK363), Kubota gas engine, 110 psi., B.O.M. 251205-003, single axle, ST 175/ 80 R 13 tires, shows 1477 hours. Notes: Item Location: Neola, IA 51559 Equipment Sold "AS IS, WHERE IS": All equipment/property is sold "AS IS, WHERE IS" with no warranty or guarantees, expressed or implied, No operational assessments have been made by DPA Auctions on this item, it has been photographed ONLY.



#291 - Case DH4 Trencher (KMK362)

Case DH4 Trencher (KMK362), model DH4, Case four cylinder diesel engine, 2 post roll bar, articulated tractor body, chain trencher attachment, 6' adjustable push blade, 5,000 lbs. base operating weight, 31 x 15.50 - 15 NHS tires, shows 940 hours. Notes: Item Location: Neola, IA 51559 Equipment Sold "AS IS, WHERE IS": All equipment/property is sold "AS IS, WHERE IS" with no warranty or guarantees, expressed or implied, No operational assessments have been made by DPA Auctions on this item, it has been photographed ONLY.



#292 - Friesen Seed Hopper & Scale (DL169)

Friesen Seed Hopper & Scale (DL169), ladder, S/N 34000 w/ Cardinal model FSL-3F scale, 20,000 lb capacity, S/N B70703-S, Epson printer. Notes: Equipment has been removed from site in photos - is packaged & ready to be loaded in Seward, NE - removal is the responsibility of the buyer. Equipment is boxed up and ready to go. Item Location: Seward, NE 68434 Equipment Sold "AS IS, WHERE IS": All equipment/property is sold "AS IS, WHERE IS" with no warranty or guarantees, expressed or implied, No operational assessments have been made by DPA Auctions on this item, it has been photographed ONLY.



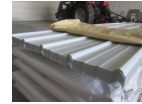
#293 - KSI Model 12UB Conveyor (DL168)

KSI Model 12UB Conveyor (DL168), includes Kahler Automation, approx 30', Baldor 7.5 hp electric motor, S/N 3000, Kahler Air Solenoid panel Assembly, Kahler KASPC control panel, Kahler FDS-RB8-4 control panel. Notes: Equipment has been removed from site in photos - is packaged & ready to be loaded in Seward, NE - removal is the responsibility of the buyer. Equipment is boxed up and ready to go. Item Location: Seward, NE 68434 Equipment Sold "AS IS, WHERE IS": All equipment/property is sold "AS IS, WHERE IS" with no warranty or guarantees, expressed or implied, No operational assessments have been made by DPA Auctions on this item, it has been photographed ONLY.



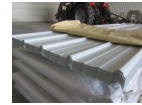
#294 - Metal Siding (DR7464)

Metal Siding (DR7464), NEW UNUSED (70) sheets, American made, White color, 12'long X 36" overlap coverage, Premium Pro Rib Profile style, 29 gauge. ALWAYS stored inside. Meets all USA building material engineering codes for Tested Tolerances for wind & snow. USA stamped seal of approval documentation on all products. Notes: Loadout IS available with flexible appointments. Can also offer hardware, trim, corners at wholesale prices. Item Location: Monroe, NE 68647 Equipment Sold "AS IS, WHERE IS": All equipment/property is sold "AS IS, WHERE IS" with no warranty or guarantees, expressed or implied, No operational assessments have been made by DPA Auctions on this item, it has been photographed ONLY.



#295 - Metal Siding (DR7465)

Metal Siding (DR7465) NEW UNUSED (70) sheets, American made, White color, 12'long X 36" overlap coverage, Premium Pro Rib Profile style, 29 gauge. ALWAYS stored inside. Meets all USA building material engineering codes for Tested Tolerances for wind & snow. USA stamped seal of approval documentation on all products. Notes: Loadout IS available with flexible appointments. Can also offer hardware, trim, corners at wholesale prices. Item Location: Monroe, NE 68647 Equipment Sold "AS IS, WHERE IS": All equipment/property is sold "AS IS, WHERE IS" with no warranty or guarantees, expressed or implied, No operational assessments have been made by DPA Auctions on this item, it has been photographed ONLY.



#296 - Metal Siding (DR7466)

Metal Siding (DR7466), NEW UNUSED (70) sheets, American made, White color, 12'long X 36" overlap coverage, Premium Pro Rib Profile style, 29 gauge. ALWAYS stored inside. Meets all USA building material engineering codes for Tested Tolerances for wind & snow. USA stamped seal of approval documentation on all products. Notes: Loadout IS available with flexible appointments. Can also offer hardware, trim, corners at wholesale prices. Item Location: Monroe, NE 68647 Equipment Sold "AS IS, WHERE IS": All equipment/property is sold "AS IS, WHERE IS" with no warranty or guarantees, expressed or implied, No operational assessments have been made by DPA Auctions on this item, it has been photographed ONLY.



#297 - Metal Siding (DR7467)

Metal Siding (DR7467), NEW UNUSED (30) sheets, American made, White color, 22'long X 36" overlap coverage, Premium Pro Rib Profile style, Ultimate Livestock G90 sub-straight, 29 gauge. ALWAYS stored inside. Meets all USA building material engineering codes for Tested Tolerances for wind & snow. USA stamped seal of approval documentation on all products. Notes: Loadout IS available with flexible appointments. Can also offer hardware, trim, corners at wholesale prices. Item Location: Monroe, NE 68647 Equipment Sold "AS IS, WHERE IS": All equipment/property is sold "AS IS, WHERE IS" with no warranty or guarantees, expressed or implied, No operational assessments have been made by DPA Auctions on this item, it has been photographed ONLY.



#298 - Metal Siding (DR7468)

Metal Siding (DR7468), NEW UNUSED (30) sheets, American made, White color, 22'long X 36" overlap coverage, Premium Pro Rib Profile style, Ultimate Livestock G90 sub-straight, 29 gauge. ALWAYS stored inside. Meets all USA building material engineering codes for Tested Tolerances for wind & snow. USA stamped seal of approval documentation on all products. Notes: Loadout IS available with flexible appointments. Can also offer hardware, trim, corners at wholesale prices. Item Location: Monroe, NE 68647 Equipment Sold "AS IS, WHERE IS": All equipment/property is sold "AS IS, WHERE IS" with no warranty or guarantees, expressed or implied, No operational assessments have been made by DPA Auctions on this item, it has been photographed ONLY.



#299 - Metal Siding (DR7469)

Metal Siding (DR7469), NEW UNUSED (30) sheets, American made, White color, 22'long X 36" overlap coverage, Premium Pro Rib Profile style, Ultimate Livestock G90 sub-straight, 29 gauge. ALWAYS stored inside. Meets all USA building material engineering codes for Tested Tolerances for wind & snow. USA stamped seal of approval documentation on all products. Notes: Loadout IS available with flexible appointments. Can also offer hardware, trim, corners at wholesale prices. Item Location: Monroe, NE 68647 Equipment Sold "AS IS, WHERE IS": All equipment/property is sold "AS IS, WHERE IS" with no warranty or guarantees, expressed or implied, No operational assessments have been made by DPA Auctions on this item, it has been photographed ONLY.



#300 - Metal Siding (DR7470)

Metal Siding (DR7470), NEW UNUSED (30) sheets, American made, White color, 22'long X 36" overlap coverage, Premium Pro Rib Profile style, Ultimate Livestock G90 sub-straight, 29 gauge. ALWAYS stored inside. Meets all USA building material engineering codes for Tested Tolerances for wind & snow. USA stamped seal of approval documentation on all products. Notes: Loadout IS available with flexible appointments. Can also offer hardware, trim, corners at wholesale prices. Item Location: Monroe, NE 68647 Equipment Sold "AS IS, WHERE IS": All equipment/property is sold "AS IS, WHERE IS" with no warranty or guarantees, expressed or implied, No operational assessments have been made by DPA Auctions on this item, it has been photographed ONLY.



#301 - Metal Siding (DR7471)

Metal Siding (DR7471), NEW UNUSED (30) sheets, American made, White color, 22'long X 36" overlap coverage, Premium Pro Rib Profile style, Ultimate Livestock G90 sub-straight, 29 gauge. ALWAYS stored inside. Meets all USA building material engineering codes for Tested Tolerances for wind & snow. USA stamped seal of approval documentation on all products. Notes: Loadout IS available with flexible appointments. Can also offer hardware, trim, corners at wholesale prices. Item Location: Monroe, NE 68647 Equipment Sold "AS IS, WHERE IS": All equipment/property is sold "AS IS, WHERE IS" with no warranty or guarantees, expressed or implied, No operational assessments have been made by DPA Auctions on this item, it has been photographed ONLY.

