

Auction catalog

Title	Online Auction December 5, 2017 10AM Central
Description	The following line of Fertilizer, Farm Implement, Truck, Trailer & Construction Equipment will be sold online with the bidding ending on December 5, 2017. Location of the equipment is given. Bidding within the last minute before the closing of a lot will extend the bidding time by an additional minute. Be prepared to bid accordingly. For more information, contact Del Peterson & Associates: 419 West Judy Drive Fremont NE, 68025 Phone: 800-492-9090 or 402-721-4388 Fax: 402-721-4583 E-mail: auction@delpeterson.com
Date	Tue, Dec 5, 2017
Starts at	10:00 AM
Address	PO Box 654, Fremont, NE 68026 USA
Categories	

#1 - Fuel Tank (DL184)

Fuel Tank (DL184), 1/3 hp A.O. Smith pump, 14,006 gallons pumped, Gas Boy meter, 500 gallon single wall tank, currently clear diesel, tank and pump are approx 5 years old. Notes: Used solely on a 1,000 farm with one semi. This item MUST be removed by 12/27/2017 with no exceptions. Dismantle, removal and transportation is at the expense, risk, and liability of the buyer - seller does not guarantee a way to load. Item Location: Shipman, IL 62685 Equipment Sold "AS IS, WHERE IS": All equipment/property is sold "AS IS, WHERE IS" with no warranty or guarantees, expressed or implied, No operational assessments have been made by DPA Auctions on this item, it has been photographed ONLY.



#2 - Shuttle Tanks (PZ7816)

Shuttle Tanks (PZ7816), 8 - approx. 135 gallon poly shuttle tanks. Notes: Item Location: Canby, MN 56220 Equipment Sold "AS IS, WHERE IS": All equipment/property is sold "AS IS, WHERE IS" with no warranty or guarantees, expressed or implied, No operational assessments have been made by DPA Auctions on this item, it has been photographed ONLY.



#3 - Shuttle Tanks (PZ7817)

Shuttle Tanks (PZ7817), 6 - approx. 120 gallon poly shuttle tanks, pumps/meters. Notes: Item Location: Canby, MN 56220 Equipment Sold "AS IS, WHERE IS": All equipment/property is sold "AS IS, WHERE IS" with no warranty or guarantees, expressed or implied, No operational assessments have been made by DPA Auctions on this item, it has been photographed ONLY.



#4 - Shuttle Tanks (PZ7818)

Shuttle Tanks (PZ7818), 7 - approx. 120 gallon poly shuttle tanks, pumps/meters. Notes: Item Location: Canby, MN 56220 Equipment Sold "AS IS, WHERE IS": All equipment/property is sold "AS IS, WHERE IS" with no warranty or guarantees, expressed or implied, No operational assessments have been made by DPA Auctions on this item, it has been photographed ONLY.



#5 - Shuttle Tanks (PZ7819)

Shuttle Tanks (PZ7819), 4 - poly shuttle tanks. Notes: Item Location: Canby, MN 56220 Equipment Sold "AS IS, WHERE IS": All equipment/property is sold "AS IS, WHERE IS" with no warranty or guarantees, expressed or implied, No operational assessments have been made by DPA Auctions on this item, it has been photographed ONLY.



#6 - Shuttle Tanks (PZ7820)

Shuttle Tanks (PZ7820), 4 - poly shuttle tanks, pumps/meters. Notes: Item Location: Canby, MN 56220 Equipment Sold "AS IS, WHERE IS": All equipment/property is sold "AS IS, WHERE IS" with no warranty or guarantees, expressed or implied, No operational assessments have been made by DPA Auctions on this item, it has been photographed ONLY.



#7 - Shuttle Tanks (PZ7821)

Shuttle Tanks (PZ7821), 4 - poly shuttle tanks, pumps/meters. Notes: Item Location: Canby, MN 56220 Equipment Sold "AS IS, WHERE IS": All equipment/property is sold "AS IS, WHERE IS" with no warranty or guarantees, expressed or implied, No operational assessments have been made by DPA Auctions on this item, it has been photographed ONLY.



#8 - Shuttle Tanks (PZ7822)

Shuttle Tanks (PZ7822), 5 - approx. 120 gallon poly shuttle tanks, pumps/meters. Notes: Item Location: Canby, MN 56220 Equipment Sold "AS IS, WHERE IS": All equipment/property is sold "AS IS, WHERE IS" with no warranty or guarantees, expressed or implied, No operational assessments have been made by DPA Auctions on this item, it has been photographed ONLY.



#9 - Poly Barrels (PZ7823)

Poly Barrels (PZ7823), 7 - poly barrels. Notes: Item Location: Canby, MN 56220 Equipment Sold "AS IS, WHERE IS": All equipment/property is sold "AS IS, WHERE IS" with no warranty or guarantees, expressed or implied, No operational assessments have been made by DPA Auctions on this item, it has been photographed ONLY.



#10 - Shuttle Tanks (PZ7824)

Shuttle Tanks (PZ7824), 5 - poly shuttle tanks. Notes: Item Location: Canby, MN 56220 Equipment Sold "AS IS, WHERE IS": All equipment/property is sold "AS IS, WHERE IS" with no warranty or guarantees, expressed or implied, No operational assessments have been made by DPA Auctions on this item, it has been photographed ONLY.



#11 - Shuttle Tanks (PZ7825)

Shuttle Tanks (PZ7825), 4 - poly shuttle tanks. Notes: Item Location: Canby, MN 56220 Equipment Sold "AS IS, WHERE IS": All equipment/property is sold "AS IS, WHERE IS" with no warranty or guarantees, expressed or implied, No operational assessments have been made by DPA Auctions on this item, it has been photographed ONLY.



#12 - Control Panel/Stand (PZ7826)

Control Panel/Stand (PZ7826), Chemical control panel, Weeder-Root meter, Marathon electric motor, stand, never been used. Notes: Item Location: Canby, MN 56220 Equipment Sold "AS IS, WHERE IS": All equipment/property is sold "AS IS, WHERE IS" with no warranty or guarantees, expressed or implied, No operational assessments have been made by DPA Auctions on this item, it has been photographed ONLY.



#13 - NEW Travis Seed Cart, Model HSC 2200

NEW Travis Seed Cart, Model HSC 2200, tandem axle, 2 box seed tender cart, Digital scale head included with auto shut off, self-aligning box guides that lock seed containers in place, 40 degree slope for absolute cleanout (no cross contamination), equipped with a 15'7" hydraulic fold auger, 7" poly-cupped flighting with a 3 stage 19' telescoping downspout, reaching all center fill planters, all models unload 625lbs. per minute, 4 minutes per box, 8.0 hp Honda OHV electric-start engine, 3000# rubber torsion axles, remote control auger functions, auger reverser virtually eliminates seed loss, scale models include: weigh indicator and isolated weigh scale frame, self-contained hydraulic system comes complete with hydraulic pump, electric solenoid, reservoir and hoses, low center of gravity, powder-coated paint for durability, 6 bolt hub with 700 x 15 tires. Notes: Please allow at least 30 days after the auction for delivery. Item Location: Fremont, NE 68025 Equipment Sold "AS IS, WHERE IS": All equipment/property is sold "AS IS, WHERE IS" with no warranty or guarantees, expressed or implied, No operational assessments have been made by DPA Auctions on this item, it has been photographed ONLY.



#14 - 2-Core Soybean Spiral (AL186)

2-Core Soybean Spiral (AL186), This machine provides a successful method for separating splits, weed seed or corn from soybeans, Unit has 10 separating inner flights, requires no power, operates by gravity, unit will separate hairy vetch from rye and wheat. Notes: Item Location: Ada, OH 45810 Equipment Sold "AS IS, WHERE IS": All equipment/property is sold "AS IS, WHERE IS" with no warranty or guarantees, expressed or implied, No operational assessments have been made by DPA Auctions on this item, it has been photographed ONLY.



#15 - USC Flow Meter Digital Readout (NP6034)

USC Flow Meter Digital Readout (NP6034), Model 13-04-0063 REV C, no flow meter, just the digital readout, Pump 2. Notes: Item Location: Gypsum, KS 67448 Equipment Sold "AS IS, WHERE IS": All equipment/property is sold "AS IS, WHERE IS" with no warranty or guarantees, expressed or implied, No operational assessments have been made by DPA Auctions on this item, it has been photographed ONLY.



#16 - USC Flow Meter Digital Readout (NP6035)

USC Flow Meter Digital Readout (NP6035), Model 13-04-0063 REV C, no flow meter, just the digital readout, Pump 1. Notes: Item Location: Gypsum, KS 67448 Equipment Sold "AS IS, WHERE IS": All equipment/property is sold "AS IS, WHERE IS" with no warranty or guarantees, expressed or implied, No operational assessments have been made by DPA Auctions on this item, it has been photographed ONLY.



#17 - USC Seed Wheel Control Panel (NP6036)

USC Seed Wheel Control Panel (NP6036), touch screen control for seed wheel, only 2 seasons of use and absolutely nothing wrong with it, comes with all wires and mounting brackets. Notes: Item Location: Gypsum, KS 67448 Equipment Sold "AS IS, WHERE IS": All equipment/property is sold "AS IS, WHERE IS" with no warranty or guarantees, expressed or implied, No operational assessments have been made by DPA Auctions on this item, it has been photographed ONLY.



#18 - 2008 RoGator SS1074 Sprayer (NP5943)

2008 RoGator SS1074 Sprayer (NP5943), Cat diesel engine, hydrostatic transmission, heat, air conditioning, Am/Fm CD radio, air ride cab, 1,080 gallon stainless steel liquid system (S/N LAGCA00SSKNSS11274), 90' boom, 3-way nozzle bodies, foam marker, 30 gallon stainless steel foam marker tank, top poly rinse tank, poly chemical inductor, Continental 650/75R32 flotation tires, section control, hydraulic filter sensor, Raven Starlink GPS, lightbar, Raven monitor, shows 2,946 hours. Notes: NEW hydrostat Item Location: Frankfort, KS 66427 Equipment Sold "AS IS, WHERE IS": All equipment/property is sold "AS IS, WHERE IS" with no warranty or guarantees, expressed or implied, No operational assessments have been made by DPA Auctions on this item, it has been photographed ONLY.



#19 - 1984 IHC Easy-Rider 2000-C Dry Floater (NP5947)

1984 IHC Easy-Rider 2000-C Dry Floater (NP5947), IHC diesel engine, automatic transmission, heat, air conditioning, Am/Fm CD radio, New Leader L2020GT dry spreader box (S/N 104618), dual spinners, roll tarp, Goodyear 1000/50R25 rear tires, 48x25.00-20 front tires, Raven SCS 660 controller, Raven monitor, shows 79,096 miles. Notes: Item Location: Herkimer, KS 66508 Equipment Sold "AS IS, WHERE IS": All equipment/property is sold "AS IS, WHERE IS" with no warranty or guarantees, expressed or implied, No operational assessments have been made by DPA Auctions on this item, it has been photographed ONLY.



#20 - 1976 Trailmobile Liquid Fertilizer Trailer (NJP468)

1976 Trailmobile Liquid Fertilizer Trailer (NJP468), Model F14S-4CCI4, 9000 gallons, spring suspension, tandem axle, Briggs & Stratton 6.5 horsepower motor, pump, RS-220 tires. Notes: Item Location: Mc Cool Junction, NE 68401 Equipment Sold "AS IS, WHERE IS": All equipment/property is sold "AS IS, WHERE IS" with no warranty or guarantees, expressed or implied, No operational assessments have been made by DPA Auctions on this item, it has been photographed ONLY.



#21 - 1995 Ford L8000 Spreader Truck (CP673)

1995 Ford L8000 Spreader Truck (CP673), Ford 8.3L diesel engine, 9 speed transmission, heat, air conditioning, single axle, spring suspension, New Leader L-20 lime spreader box, dual spinners, 11R22.5 tires, shows 310,495 miles. Notes: Missing left headlight. Item Location: Milford, NE 68405 Equipment Sold "AS IS, WHERE IS": All equipment/property is sold "AS IS, WHERE IS" with no warranty or guarantees, expressed or implied, No operational assessments have been made by DPA Auctions on this item, it has been photographed ONLY.



#22 - 1992 International 4700 Spreader Truck (CP672)

1992 International 4700 Spreader Truck (CP672), IHC 360 diesel engine, 6+ speed transmission, heat, air conditioning, Am/Fm radio, single axle, spring suspension, New Leader L-20 lime spreader box, dual spinners, 11R22.5 tires, shows 218,735 miles. Notes: Item Location: Milford, NE 68405 Equipment Sold "AS IS, WHERE IS": All equipment/property is sold "AS IS, WHERE IS" with no warranty or guarantees, expressed or implied, No operational assessments have been made by DPA Auctions on this item, it has been photographed ONLY.



#23 - Caterpillar 12D Motor Grader (CP674)

Caterpillar 12D Motor Grader (CP674), Cat diesel engine (direct start), manual transmission, cab, 12' blade, scarifier, 13.00-24 G-2 tires. Notes: Left lift gearing is bad, contact seller for more details. Item Location: Milford, NE 68405 Equipment Sold "AS IS, WHERE IS": All equipment/property is sold "AS IS, WHERE IS" with no warranty or guarantees, expressed or implied, No operational assessments have been made by DPA Auctions on this item, it has been photographed ONLY.



#24 - 2000 Freightliner FLD 120 Classic Truck (CP671)

2000 Freightliner FLD 120 Classic Truck (CP671), Cummins N-14 Red Top diesel engine (NON RUNNER), 13 speed transmission, heat, air conditioning, Am/Fm radio, cruise, engine brake, tandem axle, full screw, air ride suspension, air slide 5th wheel, shows 13,324 miles. Notes: Engine is NON RUNNER, contact seller for more information. Item Location: Milford, NE 68405 Equipment Sold "AS IS, WHERE IS": All equipment/property is sold "AS IS, WHERE IS" with no warranty or guarantees, expressed or implied, No operational assessments have been made by DPA Auctions on this item, it has been photographed ONLY.



#25 - 1997 IHC 8200 Cab/Chassis (CP678)

1997 IHC 8200 Cab/Chassis (CP678), Cummins N-14 diesel engine, 10 speed transmission, heat, air conditioning, Am/Fm radio, cruise, single axle, spring suspension, 11R22.5 tires, shows 429,673 miles. Notes: Weak batteries, contact seller for more details. Item Location: Milford, NE 68405 Equipment Sold "AS IS, WHERE IS": All equipment/property is sold "AS IS, WHERE IS" with no warranty or guarantees, expressed or implied, No operational assessments have been made by DPA Auctions on this item, it has been photographed ONLY.



#26 - 1996 Terra Gator 1603T Liquid Floater (NP5944)

1996 Terra Gator 1603T Liquid Floater (NP5944), Cat 3208 diesel engine, manual transmission, heat, air conditioning, Am/Fm radio, 1,550 gallon stainless steel liquid system, approx. 70' boom, foam marker, stainless steel foam marker tank, stainless steel top mounted rinse tank, stainless steel chemical inductor, Goodyear 66x43.00-25 tires, Raven SCS460 controller, Cultiva ATC monitor, shows 59,000 miles, shows 6,877 hours. Notes: Item Location: Frankfort, KS 66427 Equipment Sold "AS IS, WHERE IS": All equipment/property is sold "AS IS, WHERE IS" with no warranty or guarantees, expressed or implied, No operational assessments have been made by DPA Auctions on this item, it has been photographed ONLY.



#27 - 2005 RoGator 1074 Sprayer (NP5946)

2005 RoGator 1074 Sprayer (NP5946), Cat diesel engine, hydrostatic transmission, heat, air conditioning, Am/Fm radio, air ride cab, 1,080 gallon stainless steel liquid system (S/N L107034105), 90' boom, 3-way nozzle bodies, foam marker, 30 gallon stainless steel foam marker tank, top poly rinse tank, poly chemical inductor, Goodyear 380/90R46 tires, Raven Starklink GPS, lightbar, Raven Viper Pro, shows 5,312 hours. Notes: Item Location: Frankfort, KS 66427 Equipment Sold "AS IS, WHERE IS": All equipment/property is sold "AS IS, WHERE IS" with no warranty or guarantees, expressed or implied, No operational assessments have been made by DPA Auctions on this item, it has been photographed ONLY.



#28 - NEW Travis Seed Cart, Model HSC 2000

NEW Travis Seed Cart, Model HSC 2000, tandem axle, 2 box seed tender cart, self-aligning box guides that lock seed containers in place, 40 degree slope for absolute cleanout (no cross contamination), equipped with a 15'7" hydraulic fold auger, 7" poly-cupped flighting with a 3 stage 19' telescoping downspout, reaching all center fill planters, all models unload 625lbs. per minute, 4 minutes per box, 8.0 hp Honda OHV electric-start engine, 3000# rubber torsion axles, remote control auger functions, auger reverser virtually eliminates seed loss, scale models include: weigh indicator and isolated weigh scale frame, self-contained hydraulic system comes complete with hydraulic pump, electric solenoid, reservoir and hoses, low center of gravity, powder-coated paint for durability, 6 bolt hub with 700 x 15 tires. Notes: Please allow at least 30 days after the auction for delivery. Item Location: Fremont, NE 68025 Equipment Sold "AS IS, WHERE IS": All equipment/property is sold "AS IS, WHERE IS" with no warranty or guarantees, expressed or implied, No operational assessments have been made by DPA Auctions on this item, it has been photographed ONLY.



#29 - 1997 Freightliner FLD 120 Truck (CP680)

1997 Freightliner FLD 120 Truck (CP680), Detroit Series 60 diesel engine, Rockwell 10 speed transmission, heat, air conditioning, Am/Fm radio, cruise, engine brake, tandem axle, full screw, air ride suspension, air slide 5th wheel, 295/75R22.5 tires, aluminum wheels, shows 347,518 miles. Notes: Loses water, contact seller for more details. Item Location: Milford, NE 68405 Equipment Sold "AS IS, WHERE IS": All equipment/property is sold "AS IS, WHERE IS" with no warranty or guarantees, expressed or implied, No operational assessments have been made by DPA Auctions on this item, it has been photographed ONLY.



#30 - 2001 Freightliner Century Class S/T Truck (CP681)

2001 Freightliner Century Class S/T Truck (CP681), Detroit Series 60 diesel engine, 9 speed smart shift transmission, heat, air conditioning, Am/Fm radio, cruise, engine brake, wet kit, air ride cab, tandem axle, full screw, air ride suspension, air slide 5th wheel, 295/75R22.5 aluminum disc wheels, shows 996,805 miles. Notes: Item Location: Milford, NE 68405 Equipment Sold "AS IS, WHERE IS": All equipment/property is sold "AS IS, WHERE IS" with no warranty or guarantees, expressed or implied, No operational assessments have been made by DPA Auctions on this item, it has been photographed ONLY.



#31 - 2005 Freightliner CL120 Truck (CP682)

2005 Freightliner CL120 Truck (CP682), Mercedes-Benz diesel engine, 10 speed transmission, heat, air conditioning, Am/Fm radio, cruise, engine brake, air ride cab, tandem axle, full screw, air ride cab, mid-roof sleeper, 5th wheel plate, dual aluminum fuel tanks, single stack, 295/75R22.5 aluminum front discs, shows 76,189 miles. Notes: Item Location: Milford, NE 68405 Equipment Sold "AS IS, WHERE IS": All equipment/property is sold "AS IS, WHERE IS" with no warranty or guarantees, expressed or implied, No operational assessments have been made by DPA Auctions on this item, it has been photographed ONLY.



#32 - 1993 GMC TopKick Liquid Truck (CP677)

1993 GMC TopKick Liquid Truck (CP677), Cat diesel engine, 5 speed transmission, 2 speed rear end, heat, air conditioning, Am/Fm radio, single axle, spring suspension, 1,600 gallon stainless steel liquid tank, 11R22.5 tires, shows 317,377 miles. Notes: Stainless steel tank leaks, contact seller for more details. Item Location: Milford, NE 68405 Equipment Sold "AS IS, WHERE IS": All equipment/property is sold "AS IS, WHERE IS" with no warranty or guarantees, expressed or implied, No operational assessments have been made by DPA Auctions on this item, it has been photographed ONLY.



#33 - 2002 Freightliner FL80 Feed Truck (CP683)

2002 Freightliner FL80 Feed Truck (CP683), diesel engine, 9 speed transmission, heat, air conditioning, Am/Fm radio, cruise, tandem axle, full screw, air ride suspension, CEI Pacer 5 compartment feed body, overhead auger, 385/65R22.5 front tires, 11R22.5 rear tires, shows 564,874 miles. Notes: Item Location: Milford, NE 68405 Equipment Sold "AS IS, WHERE IS": All equipment/property is sold "AS IS, WHERE IS" with no warranty or guarantees, expressed or implied, No operational assessments have been made by DPA Auctions on this item, it has been photographed ONLY.



#34 - 1997 Peterbilt 377A Feed Truck (CP684)

1997 Peterbilt 377A Feed Truck (CP684), Cummins N-14 diesel engine, Super 10 speed transmission, heat, air conditioning, Am/Fm radio, cruise, engine brake, tandem axle, full screw, tag axle, air ride suspension, Warren 7 compartment aluminum feed body, 385/65R22.5 front tires, shows 26,406 miles. Notes: Item Location: Milford, NE 68405 Equipment Sold "AS IS, WHERE IS": All equipment/property is sold "AS IS, WHERE IS" with no warranty or guarantees, expressed or implied, No operational assessments have been made by DPA Auctions on this item, it has been photographed ONLY.



#35 - CAT 963 Track Loader (KMK1020)

CAT 963 Track Loader (KMK1020), CAT 3304 motor, diesel, Hydrostat transmission, under carriage is 100% on rails, new rollers on right side, good used rollers on left side, 8 ft. toothed bucket, shows 8080 hours, S/N: 4TA04963 A/N: 3G1197 ID: 10. Notes: Bucket can be mounted or left off for transport. Item Location: Haddam, KS 66944 Equipment Sold "AS IS, WHERE IS": All equipment/property is sold "AS IS, WHERE IS" with no warranty or guarantees, expressed or implied, No operational assessments have been made by DPA Auctions on this item, it has been photographed ONLY.



#36 - Yale Veracitor 60VX Forklift (PZ7744)

Yale Veracitor 60VX Forklift (PZ7744), LP gas engine (LP tank NOT included), shuttle shift transmission, 5200 lb lift capacity, cab, heat, fan, lights, three stage mast, side shift, power forks, 48" forks, hydra smooth load cushion, pneumatic tires, 8.15-15 front tires, 6.50-10 rear tires, shows 2719 hours. Notes: Inspected and serviced by dealer every year. LP tank NOT included. Item Location: Newark, IL 60541 Equipment Sold "AS IS, WHERE IS": All equipment/property is sold "AS IS, WHERE IS" with no warranty or guarantees, expressed or implied, No operational assessments have been made by DPA Auctions on this item, it has been photographed ONLY.



#37 - 2007 RoGator SSC1074 Sprayer (NP5945)

2007 RoGator SSC1074 Sprayer (NP5945), Cat diesel engine, hydrostatic transmission, heat, air conditioning, Am/Fm CD, air ride cab, 1,080 gallon stainless steel liquid system (S/N LAGCA0SSCCN511007), 100' boom, 3-way nozzle bodies, 30 gallon stainless steel foam marker tank, top poly rinse tank, poly chemical inductor, Goodyear 380/90R46 tires, lightbar, Raven Viper monitor, shows 4,650 hours. Notes: New centrifugal belt. Item Location: Frankfort, KS 66427 Equipment Sold "AS IS, WHERE IS": All equipment/property is sold "AS IS, WHERE IS" with no warranty or guarantees, expressed or implied, No operational assessments have been made by DPA Auctions on this item, it has been photographed ONLY.



#39 - 1971 Clement Pup Trailer (NJP478)

1971 Clement Pup Trailer (NJP478), 3200 gallon poly liquid tank, triple axle, spring ride suspension, air brake hookups, pinal hitch, 10.00 R20 Dayton wheels. Notes: Item Location: Daykin, NE 68338 Equipment Sold "AS IS, WHERE IS": All equipment/property is sold "AS IS, WHERE IS" with no warranty or guarantees, expressed or implied, No operational assessments have been made by DPA Auctions on this item, it has been photographed ONLY.



#40 - Flotation Tires (PZ7750)

Flotation Tires (PZ7750), 4 - Michelin 650/65R38 flotation tires & rims. Notes: Item Location: West Branch, IA 52358 Equipment Sold "AS IS, WHERE IS": All equipment/property is sold "AS IS, WHERE IS" with no warranty or guarantees, expressed or implied, No operational assessments have been made by DPA Auctions on this item, it has been photographed ONLY.



#41 - NEW Hitch Doc Fuel Trailer, Model HFC500

NEW Hitch Doc Fuel Trailer, Model HFC500, nose storage compartment, 10 gauge double seam welded tank, full length baffled tanks, 2" anti-slosh tank filler cap and vent, 1-1/2" drain plug, electric brakes w/ breakaway system and safety chains, liquid - two component paint and primer, 25 GPM 12 volt fuel pump, 1" x 18' hose with retractable reel & auto shut-off nozzle, 10 Micron filter, 7,000lbs square lift jack, dual torsion axles: 3,500lbs, DOT approved incandescent tail lights, stop lights, front and rear side marker lights, adjustable 2-5/16" ball hitch, fuel gauge with infinite fuel level indicator, rock guard kit, 205/75/15 tires and rims, bolt on fenders. Notes: Please allow at least 30 days after the auction for delivery. Item Location: Fremont, NE 68025 Equipment Sold "AS IS, WHERE IS": All equipment/property is sold "AS IS, WHERE IS" with no warranty or guarantees, expressed or implied, No operational assessments have been made by DPA Auctions on this item, it has been photographed ONLY.



#42 - 2016 RoGator RG1100B Sprayer (NP6004)

2016 RoGator RG1100B Sprayer (NP6004), Sisu diesel engine, 7 speed automatic transmission, heat, air conditioning, Am/Fm CD radio, with Bluetooth, Premium interior with heated/cooled seat, New Leader L4258 11' stainless steel dry spreader box, dual spinners, Multiplier Ready (equipped with pump, nodes, wiring, etc. but no insert installed), hydraulic track adjustment, (2) sets of tires, 380/90R46 tires 90%, 650/65R38 tires 90%, Phoenix GPS, Viper 4 monitor, RGL 600 lightbar, shows 405 hours. Notes: Machine is in EXCELLENT CONDITION. Has remainder of 5 YEAR COMPREHENSIVE WARRANTY, warranty start date was January 1, 2017. Item Location: Garland City, AR 71839 Equipment Sold "AS IS, WHERE IS": All equipment/property is sold "AS IS, WHERE IS" with no warranty or guarantees, expressed or implied, No operational assessments have been made by DPA Auctions on this item, it has been photographed ONLY.



#43 - 2009 John Deere 4830 Sprayer (PZ7767)

2009 John Deere 4830 Sprayer (PZ7767) John Deere diesel engine, hydrostatic transmission, air conditioning, heat, Am/Fm CD stereo, 1000 gallon stainless steel liquid system, 100' boom, foam marker, Richway foam marker control, stainless steel chemical eductor, Good Year Ultra Sprayer 380/90R46 tires, 8 - front weights, StarFire iTC globe, Raven SCS Sidekick direct injection, Cab Cam rear camera, John Deere GS2 monitor, shows 3506 hours. Notes: Item Location: West Branch, IA 52358 Equipment Sold "AS IS, WHERE IS": All equipment/property is sold "AS IS, WHERE IS" with no warranty or guarantees, expressed or implied, No operational assessments have been made by DPA Auctions on this item, it has been photographed ONLY.



#44 - 1997 John Deere 8300 MFWD Tractor (NP6033)

1997 John Deere 8300 MFWD Tractor (NP6033), John Deere diesel engine, power shift transmission, cab, 3 port hydraulics, Firestone rear tires, hours unknown. Notes: This tractor is being sold as a parts tractor, the tractor is out of Mississippi and need major work on the motor, transmission and hydraulic system, tires are in poor condition and the front end of the tractor is damaged, please contact the seller or inspect the tractor before placing any bids. Item Location: Blackwater, MO 65322 Equipment Sold "AS IS, WHERE IS": All equipment/property is sold "AS IS, WHERE IS" with no warranty or guarantees, expressed or implied, No operational assessments have been made by DPA Auctions on this item, it has been photographed ONLY.



#45 - 2008 Timpte Ag Hopper Grain Trailer (NP6032)

2008 Timpte Ag Hopper Grain Trailer (NP6032), approx. 42' x 96", side walls 66", tandem axle, air ride suspension, 2 speed traps, 2 rows of lights, 24.5 tires, 70% brakes, roll tarp. Notes: Item Location: Ulysses, NE 68669 Equipment Sold "AS IS, WHERE IS": All equipment/property is sold "AS IS, WHERE IS" with no warranty or guarantees, expressed or implied, No operational assessments have been made by DPA Auctions on this item, it has been photographed ONLY.



#46 - 2000 Terra Gator 8104 Dry Floater (CP670)

2000 Terra Gator 8104 Dry Floater (CP670), Cat diesel engine, Terra Shift transmission, heat, air conditioning, Air Max dry air flow system, 70' stainless steel boom, 66x43.00-25 rear tires, 48x31.00R20 front tires, Mid-Tech TASC-6100 controller, shows 12,335 miles, shows 9,497 hours. Notes: Batteries weak, Air Max body may not be operational, contact seller for more information. Item Location: Milford, NE 68405 Equipment Sold "AS IS, WHERE IS": All equipment/property is sold "AS IS, WHERE IS" with no warranty or guarantees, expressed or implied, No operational assessments have been made by DPA Auctions on this item, it has been photographed ONLY.



#47 - 1999 Tyler Titan 4300 Dry Floater (CP675)

1999 Tyler Titan 4300 Dry Floater (CP675), Cat diesel engine, Allison automatic transmission, heat, air conditioning, Am/Fm radio, New Leader L2020GT stainless steel dry spreader box, dual spinners, 48x31.00R20 front tires, 66x43.00-25 rear tires, Ag Leader monitor, lightbar, shows 43,512 miles, shows 3,896 hours. Notes: Item Location: Milford, NE 68405 Equipment Sold "AS IS, WHERE IS": All equipment/property is sold "AS IS, WHERE IS" with no warranty or guarantees, expressed or implied, No operational assessments have been made by DPA Auctions on this item, it has been photographed ONLY.



#48 - 1990 Loral Easy-Rider 1600-C Cab/Chassis (CP676)

1990 Loral Easy-Rider 1600-C Cab/Chassis (CP676), IHC DT-466 diesel engine, automatic transmission, heat, air conditioning, Am/Fm radio, 600/55-22.5 front tires, 66x43.00-25 rear tires, shows 6,640 hours. Notes: Weak batteries. Item Location: Milford, NE 68405 Equipment Sold "AS IS, WHERE IS": All equipment/property is sold "AS IS, WHERE IS" with no warranty or guarantees, expressed or implied, No operational assessments have been made by DPA Auctions on this item, it has been photographed ONLY.



#49 - 2000 CaseIH FLX4330 Dry Floater (CP679)

2000 CaseIH FLX4330 Dry Floater (CP679), Cummins diesel engine, automatic transmission, heat, air conditioning, Am/Fm radio, Flex-Air stainless steel dry air flow system, 66x43.00-25 rear tires, 48x31.00-25 front tires, Tyler monitor, SiteWinder monitor, shows 50,130 miles, shows 4,457 hours. Notes: Flex-Air transmission housing broke, batteries weak, contact seller for more details. Item Location: Milford, NE 68405 Equipment Sold "AS IS, WHERE IS": All equipment/property is sold "AS IS, WHERE IS" with no warranty or guarantees, expressed or implied, No operational assessments have been made by DPA Auctions on this item, it has been photographed ONLY.



#50 - 2011 Chevrolet Colorado Z71 LT 4x4 Pickup (NP5145)

2011 Chevrolet Colorado Z71 LT 4x4 Pickup (NP5145), crew cab, 3.7L gas engine, automatic transmission, heat, air conditioning, Am/Fm CD radio, MP3, cruise, power windows, locks and mirrors, P265/70R17 tires, tow package, GM bed liner, shows 126,086 miles. Notes: This pickup is being sold as a NON RUNNER, broken parts are being sold with the pickup, contact seller for more details. Item Location: Holdrege, NE 68949 Equipment Sold "AS IS, WHERE IS": All equipment/property is sold "AS IS, WHERE IS" with no warranty or guarantees, expressed or implied, No operational assessments have been made by DPA Auctions on this item, it has been photographed ONLY.



#51 - Simonsen SMC 3210 Dry Tender Box (NP6015, Unit 143092)

Simonsen SMC 3210 Dry Tender Box (NP6015, Unit 143092), Model SMC3210S-T, S/N 394999, rear discharge auger, manual tarp, Kohler Magnum 20 gas motor, electric start, DUO LIFt tandem axle gear, 11R22.5 tires, lights. Notes: Needs a battery, contact seller for more details. Item Location: Harrold, SD 57536 Equipment Sold "AS IS, WHERE IS": All equipment/property is sold "AS IS, WHERE IS" with no warranty or guarantees, expressed or implied, No operational assessments have been made by DPA Auctions on this item, it has been photographed ONLY.



#52 - Rapat F Series Belt Conveyor (NP6022, Unit 143131)

Rapat F Series Belt Conveyor (NP6022, Unit 143131), Model F6518, approx. 65' length, 18" ribbed belt, 9.5L-15 tires, stand, electrical box. Notes: This conveyor was blown over in a storm, operational condition is unknown, electric motor has been removed, please contact seller for more details. Item Location: Harrold, SD 57536 Equipment Sold "AS IS, WHERE IS": All equipment/property is sold "AS IS, WHERE IS" with no warranty or guarantees, expressed or implied, No operational assessments have been made by DPA Auctions on this item, it has been photographed ONLY.



#53 - Speed King Field Loader Conveyor (NP6020, Unit 143215)

Speed King Field Loader Conveyor (NP6020, Unit 143215), approx. 24" belt (belt has been worn over time and width varies), stainless steel, portable/stationary, Honda GX390 13.0HP gas motor, electric start, P235/70R15 tires. Notes: Item Location: Harrold, SD 57536 Equipment Sold "AS IS, WHERE IS": All equipment/property is sold "AS IS, WHERE IS" with no warranty or guarantees, expressed or implied, No operational assessments have been made by DPA Auctions on this item, it has been photographed ONLY.



#54 - 2013 Terra Gator 8300 Dry Floater (PZ7768, Unit 97722)

2013 Terra Gator 8300 Dry Floater (PZ7768, Unit 97722), Sisu diesel engine, CVT transmission, air conditioning, heat, Am/Fm CD stereo, New Leader L4000 G4 MultiApplier stainless steel dry spreader box (Model 545783D1-14, S/N 135825), twin spinner, all hydraulic, electric roll over tarp, Alliance Agri-Star 1000/50R25 tires, Raven GPS, lightbar, Raven monitor, shows 1575 hours. Notes: Item Location: Pipestone, MN 56164 Equipment Sold "AS IS, WHERE IS": All equipment/property is sold "AS IS, WHERE IS" with no warranty or guarantees, expressed or implied, No operational assessments have been made by DPA Auctions on this item, it has been photographed ONLY.



#55 - 2007 CaseIH SPX4420 Sprayer (PZ7770, Unit 42925)

2007 CaseIH SPX4420 Sprayer (PZ7770, Unit 42925), diesel engine, hydrostatic transmission, air conditioning, heat, Am/Fm CD stereo, 1200 gallon stainless steel liquid system, 90' boom, foam marker, top poly rinse tank, Good Year Ultratorque 380/90R46 tires, Aim Command, Raven SCS4600 controller, CaseIH FM-750 lightbar, shows 2623 hours. Notes: Item Location: Pipestone, MN 56164 Equipment Sold "AS IS, WHERE IS": All equipment/property is sold "AS IS, WHERE IS" with no warranty or guarantees, expressed or implied, No operational assessments have been made by DPA Auctions on this item, it has been photographed ONLY.



#56 - Willmar Wrangler Loader (PZ7769, Unit 88654)

Willmar Wrangler Loader (PZ7769, Unit 88654), diesel engine, hydrostatic transmission, canopy, bucket & forks, 31x15.50-15 tires, shows 2476 hours. Notes: Item Location: Pipestone, MN 56164 Equipment Sold "AS IS, WHERE IS": All equipment/property is sold "AS IS, WHERE IS" with no warranty or guarantees, expressed or implied, No operational assessments have been made by DPA Auctions on this item, it has been photographed ONLY.



#57 - Flotation Tires (PZ7772)

Flotation Tires (PZ7772), 4 - Continental Contract AC65 650/65R36 flotation tires & rims. Notes: Item Location: Pipestone, MN 56164 Equipment Sold "AS IS, WHERE IS": All equipment/property is sold "AS IS, WHERE IS" with no warranty or guarantees, expressed or implied, No operational assessments have been made by DPA Auctions on this item, it has been photographed ONLY.



#58 - 1981 Sout Liquid Trailer (PZ7761, Unit 97708)

1981 Sout Liquid Trailer (PZ7761, Unit 97708), approx. 30' flatbed trailer, tandem axle, spring suspension, 3000 gallon stainless steel liquid nurse tank, poly chemical eductor, Honda 6.5 hp gas engine/pump, 11.00-20 tires. Notes: PLEASE ALLOW AT LEAST 60 DAYS FOR TITLE TRANSFER. Item Location: Pipestone, MN 56164 Equipment Sold "AS IS, WHERE IS": All equipment/property is sold "AS IS, WHERE IS" with no warranty or guarantees, expressed or implied, No operational assessments have been made by DPA Auctions on this item, it has been photographed ONLY.



#59 - 2005 CaseIH SPX4410 Sprayer (PZ7766)

2005 CaseIH SPX4410 Sprayer (PZ7766), diesel engine, hydrostatic transmission, air conditioning, heat, Am/Fm radio, 1200 gallon stainless steel liquid system, 90' boom, foam marker, top poly rinse tank, stainless steel chemical eductor, Good Year Ultra Sprayer 380/90R46 tires, Raven monitor, lightbar, Raven Starlink GPS, shows 5604 hours. Notes: Item Location: West Branch, IA 52358 Equipment Sold "AS IS, WHERE IS": All equipment/property is sold "AS IS, WHERE IS" with no warranty or guarantees, expressed or implied, No operational assessments have been made by DPA Auctions on this item, it has been photographed ONLY.



#60 - 2005 Felling Dry Tender Trailer (PZ7760, Unit 97950)

2005 Felling Dry Tender Trailer (PZ7760, Unit 97950), 2005 Felling dry tender trailer, tandem axle, spring suspension, Willmar 24 ton 6 compartment dry tender box, side discharge auger, roll over tarp, In line 6 gas engine, 11R22.5 tires. Notes: Roll over tarp is marginal. PLEASE ALLOW AT LEAST 60 DAYS FOR TITLE TRANSFER. Item Location: Pipestone, MN 56164 Equipment Sold "AS IS, WHERE IS": All equipment/property is sold "AS IS, WHERE IS" with no warranty or guarantees, expressed or implied, No operational assessments have been made by DPA Auctions on this item, it has been photographed ONLY.



#61 - 2015 Timpte Super Hopper Dry Tender Trailer (PZ7762, Unit 97719)

2015 Timpte Super Hopper Dry Tender Trailer (PZ7762, Unit 97719), 2015 Timpte Super Hopper Combo 4 compartment dry tender trailer, stainless steel under hopper conveyor, self contained diesel engine, stainless steel rear discharge conveyor, tandem axle, air ride suspension, Thunder 5000 series electric roll over tarp, 295/75R22.5 tires. Notes: PLEASE ALLOW AT LEAST 60 DAYS FOR TITLE TRANSFER. Item Location: Pipestone, MN 56164 Equipment Sold "AS IS, WHERE IS": All equipment/property is sold "AS IS, WHERE IS" with no warranty or guarantees, expressed or implied, No operational assessments have been made by DPA Auctions on this item, it has been photographed ONLY.



#62 - 2005 Felling Dry Tender Trailer (PZ7758, Unit 97954)

2005 Felling Dry Tender Trailer (PZ7758, Unit 97954), 2005 Felling dry tender trailer, tandem axle, spring suspension, Willmar 24 ton 6 compartment dry tender box (S/N 0062000277S), side discharge auger, roll over tarp, In line 6 gas engine, 11R22.5 tires. Notes: Roll over tarp is marginal. PLEASE ALLOW AT LEAST 60 DAYS FOR TITLE TRANSFER. Item Location: Pipestone, MN 56164 Equipment Sold "AS IS, WHERE IS": All equipment/property is sold "AS IS, WHERE IS" with no warranty or guarantees, expressed or implied, No operational assessments have been made by DPA Auctions on this item, it has been photographed ONLY.



#63 - 2014 Trinity Eagle Bridge Belt Trailer (PZ7781, Unit 97673)

2014 Trinity Eagle Bridge Belt Trailer (PZ7781, Unit 97673), 2014 Trinity Eagle Bridge belt trailer, poly lined, tandem axle, hydraulic gate, top hinge & slider controls, aluminum chute, roll over tarp, 11R22.5 tires. Notes: PLEASE ALLOW AT LEAST 60 DAYS FOR TITLE TRANSFER. Item Location: Gluek, MN 56260 Equipment Sold "AS IS, WHERE IS": All equipment/property is sold "AS IS, WHERE IS" with no warranty or guarantees, expressed or implied, No operational assessments have been made by DPA Auctions on this item, it has been photographed ONLY.



#64 - Ag Chem Liquid System (PZ7764)

Ag Chem Liquid System (PZ7764), Ag Chem 1800 gallon stainless steel liquid system, 60/80' boom, foam marker, stainless steel foam marker tank, top poly rinse tank. Notes: Running gear NOT included. Item Location: West Branch, IA 52358 Equipment Sold "AS IS, WHERE IS": All equipment/property is sold "AS IS, WHERE IS" with no warranty or guarantees, expressed or implied, No operational assessments have been made by DPA Auctions on this item, it has been photographed ONLY.



#65 - Friesen Buik Bin (NP6021, Unit 143099)

Friesen Buik Bin (NP6021, Unit 143099), 6 leg stand, ladder, tank is dented, bottom gate supported by strap, tank is dented (see photos), but will hold product and does not leak. Notes: Seller says tank is dented (see photos) but will hold product with no leaks. Buyer will be responsible for arranging equipment to load this bin. Dismantle, removal and transportation is at the expense, risk and liability of the buyer. Item Location: Harrold, SD 57536 Equipment Sold "AS IS, WHERE IS": All equipment/property is sold "AS IS, WHERE IS" with no warranty or guarantees, expressed or implied, No operational assessments have been made by DPA Auctions on this item, it has been photographed ONLY.



#66 - Doyle Dry Blender (PZ7754)

Doyle Dry Blender (PZ7754), Doyle 10 ton vertical stainless steel dry blender, stainless steel loadout conveyor, Cardinal 212GX digital readout. Notes: This blender must be removed by January 19th, 2018 with NO exceptions. Dismantle, removal and transportation is at the expense, risk and liability of the buyer. Item Location: Marissa, IL 62257 Equipment Sold "AS IS, WHERE IS": All equipment/property is sold "AS IS, WHERE IS" with no warranty or guarantees, expressed or implied, No operational assessments have been made by DPA Auctions on this item, it has been photographed ONLY.



#67 - 2008 John Deere 4930 Sprayer (PZ7775, Unit 98450)

2008 John Deere 4930 Sprayer (PZ7775, Unit 98450), John Deere diesel engine, hydrostatic transmission, air conditioning, heat, Am/Fm CD stereo, 1200 gallon stainless steel liquid system, 120' boom, foam marker, poly foam marker tank, stainless steel chemical eductor, Alliance Row Crop Radial 380/105R50 row crop tires, StarFire iTC globe, Peoplenet, John Deere monitor, shows 3890 hours. Notes: Item Location: Gluek, MN 56260 Equipment Sold "AS IS, WHERE IS": All equipment/property is sold "AS IS, WHERE IS" with no warranty or guarantees, expressed or implied, No operational assessments have been made by DPA Auctions on this item, it has been photographed ONLY.



#68 - 2012 Terra Gator 9300 Dry Air Flow Floater (PZ7810, Unit 97334)

2012 Terra Gator 9300 Dry Air Flow Floater (PZ7810, Unit 97334), Cat C13 diesel engine, Power Shift transmission, air conditioning, heat, Am/Fm CD stereo, Ag Chem Air Max Precision 2 dry air flow system, 70' stainless steel boom, foam marker, stainless steel foam marker tank, electric roll over tarp, Michelin Meg Bib 1050/50R32 tires, Raven monitor, cab camera, Raven GPS, shows 2182 hours. Notes: Item Location: Alberta, MN 56207 Equipment Sold "AS IS, WHERE IS": All equipment/property is sold "AS IS, WHERE IS" with no warranty or guarantees, expressed or implied, No operational assessments have been made by DPA Auctions on this item, it has been photographed ONLY.



#69 - Dry Fertilizer Leg (PZ7755)

Dry Fertilizer Leg (PZ7755), 31.5' Stainless steel dry fertilizer leg, 2 - down spouts, stainless steel pit conveyor. Notes: This leg & conveyor must be removed by January 19th, 2018 with NO exceptions. Dismantle, removal and transportation is at the expense, risk and liability of the buyer. Item Location: Marissa, IL 62257 Equipment Sold "AS IS, WHERE IS": All equipment/property is sold "AS IS, WHERE IS" with no warranty or guarantees, expressed or implied, No operational assessments have been made by DPA Auctions on this item, it has been photographed ONLY.



#70 - Clark Forklift (NP6007, Unit 7698)

Clark Forklift (NP6007, Unit 7698), LP/Gas, shuttle shift, forks, 31x8x15 front tires, 18x6x12 1/8 rear tires. Notes: This forklift has weak batteries, hour meter is broken, LP tank DOES NOT SELL with the forklift, for more details please contact the seller. Item Location: Harrold, SD 57536 Equipment Sold "AS IS, WHERE IS": All equipment/property is sold "AS IS, WHERE IS" with no warranty or guarantees, expressed or implied, No operational assessments have been made by DPA Auctions on this item, it has been photographed ONLY.



#71 - Brandt GrainBelt 1545 (NP6014, Unit 143135)

Brandt GrainBelt 1545 (NP6014, Unit 143135), EZTRAK, approx. 45' length x 15" belt, portable, Kohler Command Pro 30 gas motor, electric start, hydraulic winch controls, ST205/75D15 tires. Notes: Item Location: Harrold, SD 57536 Equipment Sold "AS IS, WHERE IS": All equipment/property is sold "AS IS, WHERE IS" with no warranty or guarantees, expressed or implied, No operational assessments have been made by DPA Auctions on this item, it has been photographed ONLY.



#72 - Fast Liquid Nurse Trailer (NP6016, Unit 143085)

Fast Liquid Nurse Trailer (NP6016, Unit 143085), 1,600 gallon poly liquid tank, Honda 5.5HP gas motor, pump, 4 wheel gear, 11R22.5 tires. Notes: Item Location: Harrold, SD 57536 Equipment Sold "AS IS, WHERE IS": All equipment/property is sold "AS IS, WHERE IS" with no warranty or guarantees, expressed or implied, No operational assessments have been made by DPA Auctions on this item, it has been photographed ONLY.



#73 - Liquid Nurse Trailer (NP6017)

Liquid Nurse Trailer (NP6017), 1,000 gallon poly liquid tank, Honda GX160 gas motor, Hypro pump, Schaben Model P-265-1010 tandem axle gear (S/N 208755), 11L-15 tires. Notes: Item Location: Harrold, SD 57536 Equipment Sold "AS IS, WHERE IS": All equipment/property is sold "AS IS, WHERE IS" with no warranty or guarantees, expressed or implied, No operational assessments have been made by DPA Auctions on this item, it has been photographed ONLY.



#74 - 2012 CaseIH Titan 3020 Liquid Floater (PZ7911)

2012 CaseIH Titan 3020 Liquid Floater (PZ7911), diesel engine, Allison transmission, 2 speed rear end with 4 speed drop box, heat, air conditioning, Am/Fm CD radio, CaseIH 610 stainless steel liquid system, 5 section boom, foam marker, top poly rinse tank, 1000/50R25 tires, lightbar, Raven Auto Steer, Raven Viper Pro monitor, shows 2,338 hours. Notes: Item Location: Harrold, IL 62537 Equipment Sold "AS IS, WHERE IS": All equipment/property is sold "AS IS, WHERE IS" with no warranty or guarantees, expressed or implied, No operational assessments have been made by DPA Auctions on this item, it has been photographed ONLY.



#75 - Ag Chem Liquid System (PZ7765)

Ag Chem Liquid System (PZ7765), Ag Chem 1300 gallon stainless steel liquid system, 120' boom, foam marker, stainless steel foam marker tank, top poly rinse tank, Hypro pump. Notes: Came off RoGator 1396. Stands NOT included. Item Location: West Branch, IA 52358 Equipment Sold "AS IS, WHERE IS": All equipment/property is sold "AS IS, WHERE IS" with no warranty or guarantees, expressed or implied, No operational assessments have been made by DPA Auctions on this item, it has been photographed ONLY.



#76 - Liquid Nurse Trailer (NP6018)

Liquid Nurse Trailer (NP6018), 1,000 gallon poly liquid tank, Honda GX160 gas motor, pump, Schaben Model P-265-1010 tandem axle gear (S/N 209366), 11L-15 tires. Notes: Item Location: Harrold, SD 57536 Equipment Sold "AS IS, WHERE IS": All equipment/property is sold "AS IS, WHERE IS" with no warranty or guarantees, expressed or implied, No operational assessments have been made by DPA Auctions on this item, it has been photographed ONLY.



#77 - Liquid Field Charger (NP6019)

Liquid Field Charger (NP6019), (3) 3,000 gallon poly cone bottom liquid tank, Briggs & Stratton XR950 gas motor, Pacer pump, Schaben Model P-316-DCBT single axle hydraulic gear (S/N 303692), 9.5L-15 tires. Notes: Item Location: Harrold, SD 57536 Equipment Sold "AS IS, WHERE IS": All equipment/property is sold "AS IS, WHERE IS" with no warranty or guarantees, expressed or implied, No operational assessments have been made by DPA Auctions on this item, it has been photographed ONLY.



#78 - Poly Cone Bottom Liquid Tank (NP6025)

Poly Cone Bottom Liquid Tank (NP6025), 1,000 gallon capacity, stand, electric motor, MP Pumps Div. pump. Notes: Item Location: Harrold, SD 57536 Equipment Sold "AS IS, WHERE IS": All equipment/property is sold "AS IS, WHERE IS" with no warranty or guarantees, expressed or implied, No operational assessments have been made by DPA Auctions on this item, it has been photographed ONLY.



#79 - 1998 Great Dane Van Trailer (PZ7757, Unit 97688)

1998 Great Dane Van Trailer (PZ7757, Unit 97688), 1998 Great Dane van trailer, tandem axle, spring ride suspension, sliding tandems, 2 - curb side doors, rear roll up door, 3 - Ace Roto Mold 2000 gallon poly flat bottom tanks, Honda 13 hp gas engine/pump, 295/75R22.5 tires. Notes: PLEASE ALLOW AT LEAST 60 DAYS FOR TITLE TRANSFER. Item Location: Pipestone, MN 56164 Equipment Sold "AS IS, WHERE IS": All equipment/property is sold "AS IS, WHERE IS" with no warranty or guarantees, expressed or implied, No operational assessments have been made by DPA Auctions on this item, it has been photographed ONLY.



#80 - 1997 IHC 9200 Dry Tender Truck (PZ7763, Unit 11810)

1997 IHC 9200 Dry Tender Truck (PZ7763, Unit 11810), diesel engine, 10 speed transmission, air conditioning, heat, Am/Fm cassette radio, cruise control, engine brake, tandem axle, full screw, air ride suspension, Simonsen 16 ton dry tender box, rear discharge auger, all hydraulic, roll over tarp (tarp is ripped), 295/75R22.5 front tires, 11R22.5 rear tires, shows 740,836 miles. Notes: PLEASE ALLOW AT LEAST 60 DAYS FOR TITLE TRANSFER. Item Location: Pipestone, MN 56164 Equipment Sold "AS IS, WHERE IS": All equipment/property is sold "AS IS, WHERE IS" with no warranty or guarantees, expressed or implied, No operational assessments have been made by DPA Auctions on this item, it has been photographed ONLY.



#81 - Layco Stainless Steel Conveyor (PZ7756)

Layco Stainless Steel Conveyor (PZ7756), Layco 130' stainless steel overhead dry fertilizer conveyor. Notes: This conveyor must be removed by January 19th, 2018 with NO exceptions. Dismantle, removal and transportation is at the expense, risk and liability of the buyer. Item Location: Marissa, IL 62257 Equipment Sold "AS IS, WHERE IS": All equipment/property is sold "AS IS, WHERE IS" with no warranty or guarantees, expressed or implied, No operational assessments have been made by DPA Auctions on this item, it has been photographed ONLY.



#82 - 1998 IHC 9200 Dry Tender Truck (PZ7771, Unit 17963)

1998 IHC 9200 Dry Tender Truck (PZ7771, Unit 17963), Cummins M11 Plus diesel engine, 10 speed transmission, air conditioning, heat, Am/Fm cassette radio, cruise control, engine brake, tandem axle, full screw, air ride suspension, Willmar 16 ton dry tender box (S/N 1600-JWSS120), rear discharge auger, all hydraulic, roll over tarp, cougar vibration, 11R22.5 front tires, 295/75R22.5 rear tires, shows 523,272 miles. Notes: PLEASE ALLOW AT LEAST 60 DAYS FOR TITLE TRANSFER. Item Location: Pipestone, MN 56164 Equipment Sold "AS IS, WHERE IS": All equipment/property is sold "AS IS, WHERE IS" with no warranty or guarantees, expressed or implied, No operational assessments have been made by DPA Auctions on this item, it has been photographed ONLY.



#83 - 2014 Ray Man Floater Loader (PZ7805, Unit 97652)

2014 Ray Man Floater Loader (PZ7805, Unit 97652), 2014 Ray Man model FL-30D floater loader, hydraulic lift, Deutz model D2011L031 46 hp diesel engine, 11R22.5 tires, shows 218 hours. Notes: Item Location: Alberta, MN 56207 Equipment Sold "AS IS, WHERE IS": All equipment/property is sold "AS IS, WHERE IS" with no warranty or guarantees, expressed or implied, No operational assessments have been made by DPA Auctions on this item, it has been photographed ONLY.



#84 - 2013 Terra Gator 8300 Liquid Floater (PZ7773, Unit 97648)

2013 Terra Gator 8300 Liquid Floater (PZ7773, Unit 97648), AGCO SISU diesel engine, CVT transmission, air conditioning, heat, Am/Fm CD stereo, 1800 gallon stainless steel liquid system (S/N AGCALQ18HENC21070), 60/80' boom, foam marker, stainless steel foam marker tank, stainless steel chemical eductor, top poly rinse tank, Michelin 1000/50R25 tires, Raven monitor, cab camera, Raven GPS, slingshot field hub, shows 1230 hours. Notes: Item Location: Gluek, MN 56260 Equipment Sold "AS IS, WHERE IS": All equipment/property is sold "AS IS, WHERE IS" with no warranty or guarantees, expressed or implied, No operational assessments have been made by DPA Auctions on this item, it has been photographed ONLY.



#85 - 2014 Terra Gator 9300B Dry Air Flow Floater (PZ7778, Unit 97659)

2014 Terra Gator 9300B Dry Air Flow Floater (PZ7778, Unit 97659), AGCO SISU diesel engine, CVT transmission, air conditioning, heat, Am/Fm CD stereo, Ag Chem Airmax Precision 2 dry air flow system (S/N AGCAAMP2TFNS41020), 70' stainless steel boom, foam marker, stainless steel foam marker tank, electric roll over tarp, Michelin Mega Bib 1050/50R32 tires, Raven monitor, cab camera, Raven GPS, slingshot field hub, shows 1817 hours. Notes: Item Location: Gluek, MN 56260 Equipment Sold "AS IS, WHERE IS": All equipment/property is sold "AS IS, WHERE IS" with no warranty or guarantees, expressed or implied, No operational assessments have been made by DPA Auctions on this item, it has been photographed ONLY.



#86 - Willmar Dry Spreader (PZ7806, Unit 97789)

Willmar Dry Spreader (PZ7806, Unit 97789), Willmar 800 dry spreader, tandem axle, twin spinner, PTO, 19L-16.1 flotation tires. Notes: Item Location: Alberta, MN 56207 Equipment Sold "AS IS, WHERE IS": All equipment/property is sold "AS IS, WHERE IS" with no warranty or guarantees, expressed or implied, No operational assessments have been made by DPA Auctions on this item, it has been photographed ONLY.



#87 - Willmar Dry Spreader (PZ7807, Unit 97788)

Willmar Dry Spreader (PZ7807, Unit 97788), Willmar 800 dry spreader, tandem axle, twin spinner, PTO, 19L-16.1 flotation tires. Notes: Item Location: Alberta, MN 56207 Equipment Sold "AS IS, WHERE IS": All equipment/property is sold "AS IS, WHERE IS" with no warranty or guarantees, expressed or implied, No operational assessments have been made by DPA Auctions on this item, it has been photographed ONLY.



#88 - 2014 Trinity Eagle Bridge Belt Trailer (PZ7782, Unit 97674)

2014 Trinity Eagle Bridge Belt Trailer (PZ7782, Unit 97674), 2014 Trinity Eagle Bridge belt trailer, poly lined, tandem axle, hydraulic gate, top hinge & slider controls, aluminum chute, roll over tarp, 11R22.5 tires. Notes: PLEASE ALLOW AT LEAST 60 DAYS FOR TITLE TRANSFER. Item Location: Gluek, MN 56260 Equipment Sold "AS IS, WHERE IS": All equipment/property is sold "AS IS, WHERE IS" with no warranty or guarantees, expressed or implied, No operational assessments have been made by DPA Auctions on this item, it has been photographed ONLY.



#89 - Pro Ag Hay Hiker (NJP225)

Pro Ag Hay Hiker (NJP225), Model 1400, the 1400 model easily handles (18) 48" bales, (14) 60" bales or (12) large 72" bales, 11L-15 tires. Notes: Item Location: Greeley, CO 80543 Equipment Sold "AS IS, WHERE IS": All equipment/property is sold "AS IS, WHERE IS" with no warranty or guarantees, expressed or implied, No operational assessments have been made by DPA Auctions on this item, it has been photographed ONLY.



#90 - Military Flatbed Trailer (PZ7751)

Military Flatbed Trailer (PZ7751), General Purpose XM1073 military 8'x16' flatbed trailer, tandem axle, heavy duty spring axles, high and low pintle hitch, 3 stabilizing legs for stationary load positioning, two manual parking brake levers, air brakes NOT working, 11R17.5 tires. Notes: NO TITLE, air brakes NOT working. Please call seller for more information. Item Location: New Vienna, IA 52065 Equipment Sold "AS IS, WHERE IS": All equipment/property is sold "AS IS, WHERE IS" with no warranty or guarantees, expressed or implied, No operational assessments have been made by DPA Auctions on this item, it has been photographed ONLY.



#91 - Poly Cone Bottom Liquid Tank (NP6026)

Poly Cone Bottom Liquid Tank (NP6026), 1,500 gallon capacity, stand. Notes: Item Location: Harrold, SD 57536 Equipment Sold "AS IS, WHERE IS": All equipment/property is sold "AS IS, WHERE IS" with no warranty or guarantees, expressed or implied, No operational assessments have been made by DPA Auctions on this item, it has been photographed ONLY.



#92 - Poly Cone Bottom Liquid Tank (NP6027)

Poly Cone Bottom Liquid Tank (NP6027), 1,000 gallon capacity, stand. Notes: Item Location: Harrold, SD 57536 Equipment Sold "AS IS, WHERE IS": All equipment/property is sold "AS IS, WHERE IS" with no warranty or guarantees, expressed or implied, No operational assessments have been made by DPA Auctions on this item, it has been photographed ONLY.



#93 - Batco 1375 Belt Conveyor (NP6028, Unit 1375)

Batco 1375 Belt Conveyor (NP6028, Unit 1375), 75' length x 15" belt, portable, 540 PTO, P205/65R15 tires. Notes: Item Location: Harrold, SD 57536 Equipment Sold "AS IS, WHERE IS": All equipment/property is sold "AS IS, WHERE IS" with no warranty or guarantees, expressed or implied, No operational assessments have been made by DPA Auctions on this item, it has been photographed ONLY.



#94 - NEW Hitch Doc Fuel Trailer, NEW NEVER USED, model HFC750

NEW Hitch Doc Fuel Trailer, NEW NEVER USED, model HFC750, tandem axle, 750 gallon fuel tank, nose storage compartment, 10 gauge double seam welded, tank is independent from chassis & can be removed, 2 full length baffles, 2" anti-slosh tank filler cap & vent, cap vents @ 2.5 PSI, 1 1/2" drain plug, electric brakes w/breakaway system & safety chains, liquid-two component paint & primer, 25 GPM 12 volt fuel pump, 1" x 35' retractable hose & reel, auto shut off nozzle, 10 Micron filter, 7000 lb square lift jack, dual torsion axles 3500lb, DOT approved lights, 2 5/16 ball hitch, top mounted fuel gauge, rock guard kit w/ diamond plate on fenders, 235/80R16 tires, bolt on fenders. Notes: Please allow at least 30 days after the auction for delivery. Item Location: Fremont, NE 68025 Equipment Sold "AS IS, WHERE IS": All equipment/property is sold "AS IS, WHERE IS" with no warranty or guarantees, expressed or implied, No operational assessments have been made by DPA Auctions on this item, it has been photographed ONLY.



#95 - 1970 TRAIL-EZE Trailer (NP6024, Unit 10053)

1970 TRAIL-EZE Trailer (NP6024, Unit 10053), Model 1050T18, approx. 18' x 96" deck, pintle hitch, wood deck, dual tandem axle, 7.50-15 tires, 24,000lb load capacity. Notes: One inside axle is completely gone and tires are missing (see photos), contact seller for more details. PLEASE ALLOW AT LEAST 60 DAYS FOR TITLE TRANSFER. Item Location: Harrold, SD 57536 Equipment Sold "AS IS, WHERE IS": All equipment/property is sold "AS IS, WHERE IS" with no warranty or guarantees, expressed or implied, No operational assessments have been made by DPA Auctions on this item, it has been photographed ONLY.



#96 - 2001 Redi Haul Flatbed Trailer (NP6029, Unit 10049)

2001 Redi Haul Flatbed Trailer (NP6029, Unit 10049), Model R25210, 20' flatbed, 5' beavertail, 5' fold down ramps, tandem axle, spring suspension, NEW wood deck put on this summer, pintle hitch, lights, LT245/75R16 tires. Notes: PLEASE ALLOW AT LEAST 60 DAYS FOR TITLE TRANSFER. Item Location: Harrold, SD 57536 Equipment Sold "AS IS, WHERE IS": All equipment/property is sold "AS IS, WHERE IS" with no warranty or guarantees, expressed or implied, No operational assessments have been made by DPA Auctions on this item, it has been photographed ONLY.



#97 - 1998 Mack Flatbed Truck (NP6012, Unit 10039)

1998 Mack Flatbed Truck (NP6012, Unit 10039), Remack 427HP diesel engine, Eaton Fuller 10 speed transmission, heat, air conditioning, Am/Fm CD radio, cruise, power windows, tandem axle, air lift axle (255/70R22.5 tire size), spring suspension, approx. 8' x 24' flatbed, PT&E 540 gallon stainless steel liquid tank, Tokheim meter, Briggs & Stratton gas motor, pump, 295/75R22.5 tires, shows 24,038 hours, shows 102,050 miles. Notes: PLEASE ALLOW AT LEAST 60 DAYS FOR TITLE TRANSFER. Item Location: Harrold, SD 57536 Equipment Sold "AS IS, WHERE IS": All equipment/property is sold "AS IS, WHERE IS" with no warranty or guarantees, expressed or implied, No operational assessments have been made by DPA Auctions on this item, it has been photographed ONLY.



#98 - 2005 CaseIH FLX 3010 Floater Chassis (PZ7913)

2005 CaseIH FLX 3010 Floater Chassis (PZ7913), diesel engine, Allison transmission, heat, air conditioning, Am/Fm radio, stainless steel chemical inductor, Michelin 1000/50R25 tires, rear tires 60%, front tire 10%, set up with PTO for dry box, has controls for liquid system, Raven Viper Pro monitor, shows 4,879 hours. Notes: Item Location: Harristown, IL 62537 Equipment Sold "AS IS, WHERE IS": All equipment/property is sold "AS IS, WHERE IS" with no warranty or guarantees, expressed or implied, No operational assessments have been made by DPA Auctions on this item, it has been photographed ONLY.



#99 - 2014 Case Round Baler (NJP230)

2014 Case Round Baler (NJP230), Model RB565, PTO, hydraulic, net wrap, 21.5L-16L tires, hydraulic pickup lift. Notes: Item Location: Greeley, CO 80543 Equipment Sold "AS IS, WHERE IS": All equipment/property is sold "AS IS, WHERE IS" with no warranty or guarantees, expressed or implied, No operational assessments have been made by DPA Auctions on this item, it has been photographed ONLY.



#100 - 2002 International 4700 Liquid Truck (NP6013, Unit 10022)

2002 International 4700 Liquid Truck (NP6013, Unit 10022), IHC diesel engine, automatic transmission, heat, air conditioning, Am/Fm radio, cruise, single axle spring suspension, 2,000 gallon stainless steel liquid tank, (2) Honda 5.5HP gas motors/pumps, 11R22.5 tires, shows 118,037 miles. Notes: PLEASE ALLOW AT LEAST 60 DAYS FOR TITLE TRANSFER. Item Location: Harrold, SD 57536 Equipment Sold "AS IS, WHERE IS": All equipment/property is sold "AS IS, WHERE IS" with no warranty or guarantees, expressed or implied, No operational assessments have been made by DPA Auctions on this item, it has been photographed ONLY.



#102 - 2010 Ford F-150 Platinum 4x4 Pickup (NP6008, Unit 08086)

2010 Ford F-150 Platinum 4x4 Pickup (NP6008, Unit 08086), Crew Cab, Triton 5.4L 3V gas engine, automatic transmission, heat, air conditioning, Am/Fm CD radio, Microsoft SYNC, Sony speakers, leather interior, dual climate control, front heated/cooled seats, rear heated seats, power windows, locks and mirrors, rear backup camera, cruise, tilt steering wheel, power/memory seat, running boards, tow package, bed rails, 275/55R20 tires, keypad door entry, tinted windows, bed liner mat, bug shield, shows 169,661 miles. Notes: Slip in the transmission when pulling down the road, contact seller for more details. PLEASE ALLOW AT LEAST 60 DAYS FOR TITLE TRANSFER. Item Location: Harrold, SD 57536 Equipment Sold "AS IS, WHERE IS": All equipment/property is sold "AS IS, WHERE IS" with no warranty or guarantees, expressed or implied, No operational assessments have been made by DPA Auctions on this item, it has been photographed ONLY.



#103 - Leland Dolly (NP6023, Unit 143157)

Leland Dolly (NP6023, Unit 143157), tandem axle, 5th wheel plate, 285/75R24.5 tires, air brakes, lights. Notes: Item Location: Harrold, SD 57536 Equipment Sold "AS IS, WHERE IS": All equipment/property is sold "AS IS, WHERE IS" with no warranty or guarantees, expressed or implied, No operational assessments have been made by DPA Auctions on this item, it has been photographed ONLY.



#104 - 2008 John Deere 4930 Sprayer (PZ7777, Unit 97640)

2008 John Deere 4930 Sprayer (PZ7777, Unit 97640), John Deere diesel engine, hydrostatic transmission, air conditioning, heat, Am/Fm CD stereo, 1200 gallon stainless steel liquid system, 120' boom, foam marker, poly foam marker tank, stainless steel chemical eductor, Firestone Radial RC IF380/105R50 tires, StarFire iTC globe, cab camera, John Deere monitor, shows 4224 hours. Notes: Item Location: Gluek, MN 56260 Equipment Sold "AS IS, WHERE IS": All equipment/property is sold "AS IS, WHERE IS" with no warranty or guarantees, expressed or implied, No operational assessments have been made by DPA Auctions on this item, it has been photographed ONLY.



#105 - 2008 Terra Gator 8203 Dry Floater (PZ7779, Unit 97638)

2008 Terra Gator 8203 Dry Floater (PZ7779, Unit 97638), Cat diesel engine, Terra Shift transmission, air conditioning, heat, Am/Fm CD stereo, New Leader L3020 G4 stainless steel dry spreader box, twin spinner, all hydraulic, roll over tarp, Good Year 1000/50R25 front tire, Alliance Agri Star 1000/50R25 rear tires, cab camera, Raven monitor, shows 3174 hours. Notes: Item Location: Gluek, MN 56260 Equipment Sold "AS IS, WHERE IS": All equipment/property is sold "AS IS, WHERE IS" with no warranty or guarantees, expressed or implied, No operational assessments have been made by DPA Auctions on this item, it has been photographed ONLY.



#106 - 2014 Trinity Eagle Bridge Belt Trailer (PZ7783, Unit 97676)

2014 Trinity Eagle Bridge Belt Trailer (PZ7783, Unit 97676), 2014 Trinity Eagle Bridge belt trailer, poly lined, tandem axle, hydraulic gate, top hinge & slider controls, aluminum chute, roll over tarp, 11R22.5 tires. Notes: PLEASE ALLOW AT LEAST 60 DAYS FOR TITLE TRANSFER. Item Location: Gluek, MN 56260 Equipment Sold "AS IS, WHERE IS": All equipment/property is sold "AS IS, WHERE IS" with no warranty or guarantees, expressed or implied, No operational assessments have been made by DPA Auctions on this item, it has been photographed ONLY.



#107 - 2014 Ray Man Floater Loader (PZ7786, Unit 97653)

2014 Ray Man Floater Loader (PZ7786, Unit 97653), 2014 Ray Man model FL-30D floater loader, hydraulic lift, Deutz model D2011L031 46 hp diesel engine, 11R22.5 tires, shows 215 hours. Notes: Item Location: Gluek, MN 56260 Equipment Sold "AS IS, WHERE IS": All equipment/property is sold "AS IS, WHERE IS" with no warranty or guarantees, expressed or implied, No operational assessments have been made by DPA Auctions on this item, it has been photographed ONLY.



#108 - 2014 Case Windrower (NJP229)

2014 Case Windrower (NJP229), Model WD1903, diesel engine, hydrostatic transmission, cab, heat, air conditioning, Am/Fm radio, RD163 cutting head, 580/70R26 front tires, 14L-16 swivel rear tires, Donaldson top spin, shows 265 hours. Notes: Item Location: Greeley, CO 80543 Equipment Sold "AS IS, WHERE IS": All equipment/property is sold "AS IS, WHERE IS" with no warranty or guarantees, expressed or implied, No operational assessments have been made by DPA Auctions on this item, it has been photographed ONLY.



#110 - 2006 Ford F-150 XLT 4x4 Pickup (NP6010, Unit 08088)

2006 Ford F-150 XLT 4x4 Pickup (NP6010, Unit 08088), Crew Cab, 5.4L 3V Triton gas engine, automatic transmission, heat, air conditioning, Am/Fm CD radio, power windows, locks and mirrors, cruise, keypad door entry, tow package, grill guard, running boards, LT265/70R17 tires, tonneau cover (with rip), shows 145,628 miles. Notes: Truck has a transmission issue, please contact seller for more details, crack in the front windshield, ball hitch DOES NOT SELL with this pickup. PLEASE ALLOW AT LEAST 60 DAYS FOR TITLE TRANSFER. Item Location: Harrold, SD 57536 Equipment Sold "AS IS, WHERE IS": All equipment/property is sold "AS IS, WHERE IS" with no warranty or guarantees, expressed or implied, No operational assessments have been made by DPA Auctions on this item, it has been photographed ONLY.



#111 - Willmar Dry Spreader (PZ7808, Unit 97787)

Willmar Dry Spreader (PZ7808, Unit 97787), Willmar 600 dry spreader, tandem axle, twin spinner, PTO, 19L-16.1 flotation tires. Notes: Item Location: Alberta, MN 56207 Equipment Sold "AS IS, WHERE IS": All equipment/property is sold "AS IS, WHERE IS" with no warranty or guarantees, expressed or implied, No operational assessments have been made by DPA Auctions on this item, it has been photographed ONLY.



#112 - Flotation Tires (PZ7809)

Flotation Tires (PZ7809), 4 - Good Year Super Traction Radial DT820 620/70R46 tires & rims. Notes: Item Location: Alberta, MN 56207 Equipment Sold "AS IS, WHERE IS": All equipment/property is sold "AS IS, WHERE IS" with no warranty or guarantees, expressed or implied, No operational assessments have been made by DPA Auctions on this item, it has been photographed ONLY.



#113 - 2011 CaseIH Patriot 4420 Sprayer (PZ7912)

2011 CaseIH Patriot 4420 Sprayer (PZ7912), diesel engine, hydrostatic transmission, heat, air conditioning, Am/Fm radio, deluxe cab, 1,200 gallon stainless steel liquid system, 120' boom, boom height control, section control, top poly rinse tank, poly foam marker tank, stainless steel chemical inductor, AIM Command, 380/90R46 tires, Raven Auto Steer, RGL 600 lightbar, Raven Viper Pro monitor, shows 3,123 hours. Notes: Item Location: Harrold, IL 62537 Equipment Sold "AS IS, WHERE IS": All equipment/property is sold "AS IS, WHERE IS" with no warranty or guarantees, expressed or implied, No operational assessments have been made by DPA Auctions on this item, it has been photographed ONLY.



#114 - 1980 Dorsey Liquid Trailer (PZ7802, Unit 97767)

1980 Dorsey Liquid Trailer (PZ7802, Unit 97767), 1980 Dorsey approx. 42' flatbed trailer, wood floor, bulk head, tandem axle, spring suspension, 2 - 3500 gallon poly liquid nurse tanks, 80 gallon poly eductor, super reel hose reel, 11R22.5 tires. Notes: PLEASE ALLOW AT LEAST 60 DAYS FOR TITLE TRANSFER. Item Location: Alberta, MN 56207 Equipment Sold "AS IS, WHERE IS": All equipment/property is sold "AS IS, WHERE IS" with no warranty or guarantees, expressed or implied, No operational assessments have been made by DPA Auctions on this item, it has been photographed ONLY.



#115 - 1997 Wabash Van Trailer (PZ7785, Unit 98664)

1997 Wabash Van Trailer (PZ7785, Unit 98664), 1997 Wabash model DSA102FF, single axle van trailer, lift, wood floor, translucent top, roll up door, 295/75R22.5 tires. Notes: PLEASE ALLOW AT LEAST 60 DAYS FOR TITLE TRANSFER. Item Location: Gluek, MN 56260 Equipment Sold "AS IS, WHERE IS": All equipment/property is sold "AS IS, WHERE IS" with no warranty or guarantees, expressed or implied, No operational assessments have been made by DPA Auctions on this item, it has been photographed ONLY.



#117 - Dry Spreader (PZ7792)

Dry Spreader (PZ7792), 6 ton dry spreader, tandem axle, twin spinner, gas engine, 8.25-20. Notes: This unit was used to spread salt on lot. Item Location: Gluek, MN 56260 Equipment Sold "AS IS, WHERE IS": All equipment/property is sold "AS IS, WHERE IS" with no warranty or guarantees, expressed or implied, No operational assessments have been made by DPA Auctions on this item, it has been photographed ONLY.



#118 - 2005 IHC 9200i Dry Tender Truck (PZ7803, Unit 98420)

2005 IHC 9200i Dry Tender Truck (PZ7803, Unit 98420), Cummins ISX 450 diesel engine, automatic transmission, air conditioning, heat, Am/Fm radio, cruise control, power windows & locks, engine brake, tandem axle, full screw, air ride suspension, Willmar 16 ton dry tender box (S/N 1062000480), side discharge auger, all hydraulic, roll over tarp, 295/75R22.5 front tires, 275/80R22.5 rear tires, shows 586,831 miles. Notes: Vertical auger is bad. Please call seller for more information. Item Location: Alberta, MN 56207 Equipment Sold "AS IS, WHERE IS": All equipment/property is sold "AS IS, WHERE IS" with no warranty or guarantees, expressed or implied, No operational assessments have been made by DPA Auctions on this item, it has been photographed ONLY.



#119 - 2013 Terra Gator 8300 Dry Floater (PZ7776, Unit 97649)

2013 Terra Gator 8300 Dry Floater (PZ7776, Unit 97649), AGCO SISU diesel engine, CVT transmission, air conditioning, heat, Am/Fm CD stereo, New Leader L4000 G4 stainless steel dry spreader box (Model 531916D2 - 14, S/N 138257), twin spinner, all hydraulic, electric roll over tarp, Michelin Mega Bib 1000/50R25 tires, Raven GPS, Raven monitor, shows 1385 hours. Notes: Item Location: Gluek, MN 56260 Equipment Sold "AS IS, WHERE IS": All equipment/property is sold "AS IS, WHERE IS" with no warranty or guarantees, expressed or implied, No operational assessments have been made by DPA Auctions on this item, it has been photographed ONLY.



#120 - 2014 Trinity Eagle Bridge Belt Trailer (PZ7784, Unit 97675)

2014 Trinity Eagle Bridge Belt Trailer (PZ7784, Unit 97675), 2014 Trinity Eagle Bridge belt trailer, poly lined, tandem axle, hydraulic gate, top hinge & slider controls, aluminum chute, roll over tarp, 11R22.5 tires. Notes: PLEASE ALLOW AT LEAST 60 DAYS FOR TITLE TRANSFER. Item Location: Gluek, MN 56260 Equipment Sold "AS IS, WHERE IS": All equipment/property is sold "AS IS, WHERE IS" with no warranty or guarantees, expressed or implied, No operational assessments have been made by DPA Auctions on this item, it has been photographed ONLY.



#121 - 2008 Ray Man Floater Loader (PZ7787, Unit 98448)

2008 Ray Man Floater Loader (PZ7787, Unit 98448), 2008 Ray Man model FL-30D floater loader, hydraulic lift, Deutz model D2011L031 46 hp diesel engine, 11R22.5 tires, shows 652 hours. Notes: Item Location: Gluek, MN 56260 Equipment Sold "AS IS, WHERE IS": All equipment/property is sold "AS IS, WHERE IS" with no warranty or guarantees, expressed or implied, No operational assessments have been made by DPA Auctions on this item, it has been photographed ONLY.



#122 - Dry Spreader (PZ7793)

Dry Spreader (PZ7793), Willmar 800 dry spreader, tandem axle, twin spinner, PTO, 19L-16.1 flotation tires. Notes: Item Location: Gluek, MN 56260 Equipment Sold "AS IS, WHERE IS": All equipment/property is sold "AS IS, WHERE IS" with no warranty or guarantees, expressed or implied, No operational assessments have been made by DPA Auctions on this item, it has been photographed ONLY.



#123 - Dry Spreader (PZ7795)

Dry Spreader (PZ7795), Willmar 500 Narrow Track dry spreader, tandem axle, twin spinner, PTO, 12.5L-15 flotation tires. Notes: Item Location: Gluek, MN 56260 Equipment Sold "AS IS, WHERE IS": All equipment/property is sold "AS IS, WHERE IS" with no warranty or guarantees, expressed or implied, No operational assessments have been made by DPA Auctions on this item, it has been photographed ONLY.



#124 - Redball Seed Treater (PZ7799)

Redball Seed Treater (PZ7799) Redball portable seed treater, 2 hp motor, poly eductor, single axle trailer. Notes: No title on trailer. Item Location: Gluek, MN 56260 Equipment Sold "AS IS, WHERE IS": All equipment/property is sold "AS IS, WHERE IS" with no warranty or guarantees, expressed or implied, No operational assessments have been made by DPA Auctions on this item, it has been photographed ONLY.



#126 - 2004 Ford F-150 XLT 4x4 Pickup (NP6011, Unit 08081)

2004 Ford F-150 XLT 4x4 Pickup (NP6011, Unit 08081), Extended Cab, 5.4L 3V Triton gas engine, automatic transmission, heat, air conditioning, Am/Fm CD radio, power windows, locks and mirrors, cruise, keypad door entry, tow package, bed rails, running boards, LT265/70R17 tires, shows 91,248 miles. Notes: Truck has a transmission issue, please contact seller for more details, crack in the front windshield, ball hitch DOES NOT SELL with this pickup. PLEASE ALLOW AT LEAST 60 DAYS FOR TITLE TRANSFER. Item Location: Harrold, SD 57536 Equipment Sold "AS IS, WHERE IS": All equipment/property is sold "AS IS, WHERE IS" with no warranty or guarantees, expressed or implied, No operational assessments have been made by DPA Auctions on this item, it has been photographed ONLY.



#130 - 2007 Terra Gator 8203 Dry Floater (PZ7780, Unit 97634)

2007 Terra Gator 8203 Dry Floater (PZ7780, Unit 97634), Cat diesel engine, Terra Shift transmission, air conditioning, heat, Am/Fm CD stereo, New Leader L3020 G4 stainless steel dry spreader box (Model 504622-13, S/N 126048), twin spinner, all hydraulic, roll over tarp, Michelin Meg Bib 1000/50R25 front tire, Good Year 1000/50R25 rear tires, Raven monitor, Raven GPS, Raven SmarTrax, shows 3812 hours. Notes: Item Location: Gluek, MN 56260 Equipment Sold "AS IS, WHERE IS": All equipment/property is sold "AS IS, WHERE IS" with no warranty or guarantees, expressed or implied, No operational assessments have been made by DPA Auctions on this item, it has been photographed ONLY.



#131 - 1999 Maurer Dry Tender Trailer (PZ7798, Unit 98421)

1999 Maurer Dry Tender Trailer (PZ7798, Unit 98421), 1999 Maurer dry tender trailer, tandem axle, spring suspension, Tyler 24 ton dry tender box, side discharge auger, roll over tarp, 255/70R22.5 tires. Notes: PLEASE ALLOW AT LEAST 60 DAYS FOR TITLE TRANSFER. Item Location: Gluek, MN 56260 Equipment Sold "AS IS, WHERE IS": All equipment/property is sold "AS IS, WHERE IS" with no warranty or guarantees, expressed or implied, No operational assessments have been made by DPA Auctions on this item, it has been photographed ONLY.



#132 - 1992 Mack CH613 Truck (PZ7791, Unit 97614)

1992 Mack CH613 Truck (PZ7791, Unit 97614), Mack EM7-300 diesel engine, 9 speed transmission, air conditioning, heat, Am/Fm radio, cruise control, tandem axle, full screw, air ride suspension, 295/75R22.5 front tires, 275/80R22.5 rear tires, shows 485,949 miles. Notes: Truck has idle issues. Please contact seller for more information. PLEASE ALLOW AT LEAST 60 DAYS FOR TITLE TRANSFER. Item Location: Gluek, MN 56260 Equipment Sold "AS IS, WHERE IS": All equipment/property is sold "AS IS, WHERE IS" with no warranty or guarantees, expressed or implied, No operational assessments have been made by DPA Auctions on this item, it has been photographed ONLY.



#133 - 1996 Chevrolet 4x4 Pickup (PZ7788, Unit 97616)

1996 Chevrolet 4x4 Pickup (PZ7788, Unit 97616), gas engine, automatic transmission, air conditioning, heat, Am/Fm cassette radio, cruise control, power windows & locks, LT265/75R16 tires, shows 129,053 miles. Notes: Crack in windshield, weak batteries, pickup has issues. Please call seller for more information. PLEASE ALLOW AT LEAST 60 DAYS FOR TITLE TRANSFER. Item Location: Gluek, MN 56260 Equipment Sold "AS IS, WHERE IS": All equipment/property is sold "AS IS, WHERE IS" with no warranty or guarantees, expressed or implied, No operational assessments have been made by DPA Auctions on this item, it has been photographed ONLY.



#135 - 2014 Trinity Eagle Bridge Belt Trailer (PZ7800, Unit 97678)

2014 Trinity Eagle Bridge Belt Trailer (PZ7800, Unit 97678), 2014 Trinity Eagle Bridge belt trailer, poly lined, tandem axle, hydraulic gate, top hinge & slider controls, aluminum chute, roll over tarp, 11R22.5 tires. Notes: PLEASE ALLOW AT LEAST 60 DAYS FOR TITLE TRANSFER. Item Location: Alberta, MN 56207 Equipment Sold "AS IS, WHERE IS": All equipment/property is sold "AS IS, WHERE IS" with no warranty or guarantees, expressed or implied, No operational assessments have been made by DPA Auctions on this item, it has been photographed ONLY.



#136 - Layco Vertical Blender (PZ7815)

Layco Vertical Blender (PZ7815), Layco 8 ton vertical stainless steel blender, stainless steel hopper, scales, stainless steel loadout conveyor, Leeson 10 hp electric motor. Notes: Running gear NOT included. Item Location: Canby, MN 56220 Equipment Sold "AS IS, WHERE IS": All equipment/property is sold "AS IS, WHERE IS" with no warranty or guarantees, expressed or implied, No operational assessments have been made by DPA Auctions on this item, it has been photographed ONLY.



#137 - TCM Forklift (PZ7814)

TCM Forklift (PZ7814), TCM model FG25T3G forklift, gas engine, shuttle shift transmission, canopy, lights, 7.00-12 front tires, 6.00-9 rear tires, shows 1725 hours. Notes: Item Location: Canby, MN 56220 Equipment Sold "AS IS, WHERE IS": All equipment/property is sold "AS IS, WHERE IS" with no warranty or guarantees, expressed or implied, No operational assessments have been made by DPA Auctions on this item, it has been photographed ONLY.



#138 - 2006 Magnum Hopper Dry Tender Trailer (PZ7794, Unit 98453)

2006 Magnum Hopper Dry Tender Trailer (PZ7794, Unit 98453), 2005 Magnum hopper bottom dry tender trailer, tandem axle, spring suspension, under hopper conveyor, rear discharge conveyor, power unit, electric roll over tarp, 285/75R24.5 tires. Notes: PLEASE ALLOW AT LEAST 60 DAYS FOR TITLE TRANSFER. Item Location: Gluek, MN 56260 Equipment Sold "AS IS, WHERE IS": All equipment/property is sold "AS IS, WHERE IS" with no warranty or guarantees, expressed or implied, No operational assessments have been made by DPA Auctions on this item, it has been photographed ONLY.



#139 - USC Seed Conveyor (NP4938)

USC Seed Conveyor (NP4938), Model 2520 Seed Series, 25' length, 20" ribbed belt, Leeson 5HP 230V single phase electric motor, portable, ST205/75D15 tires. Notes: Item Location: Canby, MN 56220 Equipment Sold "AS IS, WHERE IS": All equipment/property is sold "AS IS, WHERE IS" with no warranty or guarantees, expressed or implied, No operational assessments have been made by DPA Auctions on this item, it has been photographed ONLY.



#140 - New Leader Dry Spreader Box (PZ7812)

New Leader Dry Spreader Box (PZ7812), New Leader model L3220 G4 - 11 MultApplier - Ready stainless steel dry spreader box, twin spinner, electric roll over tarp, S/N 127575, with running gear. Notes: Buyer will be responsible for loading expenses. Item Location: Montevideo, MN 56265 Equipment Sold "AS IS, WHERE IS": All equipment/property is sold "AS IS, WHERE IS" with no warranty or guarantees, expressed or implied, No operational assessments have been made by DPA Auctions on this item, it has been photographed ONLY.



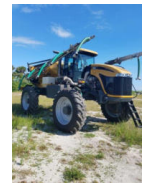
#141 - Ag Chem Liquid System (PZ7827)

Ag Chem Liquid System (PZ7827), Ag Chem 1800 gallon stainless steel liquid system, 60/80' boom, foam marker, stainless steel foam marker tank, stainless steel chemical eductor, rear poly rinse tank. Notes: Buyer will be responsible for loading expenses. Buyer will be responsible for loading expenses. For more information regarding loading and expenses, please contact Jay @ 507-532-4403. Item Location: Marshall, MN 56258 Equipment Sold "AS IS, WHERE IS": All equipment/property is sold "AS IS, WHERE IS" with no warranty or guarantees, expressed or implied, No operational assessments have been made by DPA Auctions on this item, it has been photographed ONLY.



#142 - 2014 RG1300 Rogator (TR3945)

2014 RG1300 Rogator (TR3945) diesel engine, ac/heat, AM/FM CD player, hydrostat transmission, Agri Cover roll tarp, Air Max with 3214.1 hours. 480/80R42 tires, It has 4 wheel Steer. Agrimax dry box with stainless booms, It has a Pressure Cleaner and foam markers to mark your place in the field. It is equipped with a Raven Viper Pro GPS. And is Ag Command Capable. Notes: Item Location: Moore Haven, FL 33471 Equipment Sold "AS IS, WHERE IS": All equipment/property is sold "AS IS, WHERE IS" with no warranty or guarantees, expressed or implied, No operational assessments have been made by DPA Auctions on this item, it has been photographed ONLY.



#143 - 2014 Trinity Eagle Bridge Belt Trailer (PZ7801, Unit 97677)

2014 Trinity Eagle Bridge Belt Trailer (PZ7801, Unit 97677), 2014 Trinity Eagle Bridge belt trailer, poly lined, tandem axle, hydraulic gate, top hinge & slider controls, aluminum chute, roll over tarp, 11R22.5 tires. Notes: PLEASE ALLOW AT LEAST 60 DAYS FOR TITLE TRANSFER. Item Location: Alberta, MN 56207 Equipment Sold "AS IS, WHERE IS": All equipment/property is sold "AS IS, WHERE IS" with no warranty or guarantees, expressed or implied, No operational assessments have been made by DPA Auctions on this item, it has been photographed ONLY.



#144 - Willmar 785 Air Trak Sprayer (PZ7752)

Willmar 785 Air Trak Sprayer (PZ7752) Cummins diesel engine, hydrostatic transmission, air conditioning, heat, Am/Fm cassette radio, 550 gallon stainless steel liquid system, 55' air boom, foam marker, stainless steel foam marker tank, Continental Contract AC90C 300/95R42 tires, Mid Tech ARC-6000 automatic rate controller, shows 2936 hours. Notes: Steering issues. Item Location: Flora, IL 62839 Equipment Sold "AS IS, WHERE IS": All equipment/property is sold "AS IS, WHERE IS" with no warranty or guarantees, expressed or implied, No operational assessments have been made by DPA Auctions on this item, it has been photographed ONLY.



#145 - Loral Magnum III Liquid Floater (PZ7753)

Loral Magnum III Liquid Floater (PZ7753), Cummins diesel engine, automatic transmission, air conditioning, heat, Am/Fm radio, 1600 gallon stainless steel liquid system, 55' boom, foam marker, foam marker tank, stainless steel chemical eductor, top stainless steel rinse tanks, Michelin 1000/50R25 front tire, Firestone 1050/50R25 rear tires, Raven Starlink GPS, Richway nozzle stops, shows 4419 hours. Notes: Broken cable on one of the booms. Item Location: Flora, IL 62839 Equipment Sold "AS IS, WHERE IS": All equipment/property is sold "AS IS, WHERE IS" with no warranty or guarantees, expressed or implied, No operational assessments have been made by DPA Auctions on this item, it has been photographed ONLY.



#146 - Doyle Vertical Blender (PZ7833)

Doyle Vertical Blender (PZ7833), Doyle Fat Boy 16 ton vertical blender, 44" to 26" tapered screw auger, Foote Jones Class III gear reducer, TEFC 100 hp motor, scale, stainless steel scale frame, Doyle 30' x 30" stainless steel tri-roller loadout conveyor, TEFC 15 hp motor, stainless steel conveyor covers, 420HE digital readout. Notes: This blender must be removed by March 15th, 2018 with NO exceptions. Dismantle, removal and transportation is at the expense, risk and liability of the buyer. Item Location: Pipestone, MN 56164 Equipment Sold "AS IS, WHERE IS": All equipment/property is sold "AS IS, WHERE IS" with no warranty or guarantees, expressed or implied, No operational assessments have been made by DPA Auctions on this item, it has been photographed ONLY.



#147 - New - CI Flowmax Pump (PZ7841)

New - CI Flowmax Pump (PZ7841), New - 3" CI Flowmax 15 self priming centrifugal pump, 11 hp electric start 4-stroke gas motor, cast iron pump housing, 3"x 3" NPT inlet and outlets, Dimensions: length - 14", width - 17", height - 16.1", weight - 56 lbs. Notes: Item Location: Hills, IA 52235 Equipment Sold "AS IS, WHERE IS": All equipment/property is sold "AS IS, WHERE IS" with no warranty or guarantees, expressed or implied, No operational assessments have been made by DPA Auctions on this item, it has been photographed ONLY.



#148 - 1996 Ford Aeromax 9000 Truck / 1983 Spec Trailer (PZ7835)

1996 Ford Aeromax 9000 Truck / 1983 Spec Trailer (PZ7835), Cummins M11 diesel engine, 10 speed transmission, heat, single axle, spring ride suspension, sliding 5th wheel, dual fuel tanks, 138" wheel base, 22.5 tires, fronts @ 60%, rears @ 90% virgins, shows 273,417 miles, S/N 1FTYS95V0TVA18382 with 1983 Spec single axle grain trailer, 22' long, spring ride suspension, roll tarp, brakes & drums @ 60%, tires @ 50%, 650 bushel capacity. Notes: Cab & frame in very good condition, runs and drives perfect, ready for work. Item Location: Oquawka, IL 61469 Equipment Sold "AS IS, WHERE IS": All equipment/property is sold "AS IS, WHERE IS" with no warranty or guarantees, expressed or implied, No operational assessments have been made by DPA Auctions on this item, it has been photographed ONLY.



#149 - 1999 International 4700 (DR7716)

1999 International 4700 (DR7716), DT466 diesel engine, Allison New World 3000 5 speed automatic transmission, single axle, air ride suspension, 5th wheel plate, air conditioning, cruise control, 22.5 tires, outside aluminum wheels, shows 175,963 miles, miles are actual. Notes: Item Location: Mapleton, MN 56065 Equipment Sold "AS IS, WHERE IS": All equipment/property is sold "AS IS, WHERE IS" with no warranty or guarantees, expressed or implied, No operational assessments have been made by DPA Auctions on this item, it has been photographed ONLY.



#150 - New Leader Dry Spreader Box (PZ7813)

New Leader Dry Spreader Box (PZ7813), New Leader model L3220 G4 - 11 MultApplier - Ready stainless steel dry spreader box, twin spinner, electric roll over tarp. Notes: Stands are NOT included. Buyer will be responsible for loading expenses. Item Location: Montevideo, MN 56265 Equipment Sold "AS IS, WHERE IS": All equipment/property is sold "AS IS, WHERE IS" with no warranty or guarantees, expressed or implied, No operational assessments have been made by DPA Auctions on this item, it has been photographed ONLY.



#151 - 1975 Ford F600 (DR7715)

1975 Ford F600 (DR7715), gas engine, 5X4 transmission, single axle, 14' Omaha Standard steel grain box, 61DA single cylinder hoist, roll tarp, 9.00-20 tires, spoke wheels, spring suspension, 25,853 actual miles. Notes: Item Location: Saint James, MN 56081 Equipment Sold "AS IS, WHERE IS": All equipment/property is sold "AS IS, WHERE IS" with no warranty or guarantees, expressed or implied, No operational assessments have been made by DPA Auctions on this item, it has been photographed ONLY.



#152 - Kenze Pull Type Spreader on Tracks (PD555)

Kenze Pull Type Spreader on Tracks (PD555), UTC undercarriage, 20 foot New Leader 3020 stainless steel box with G4 spinners, will spread lime at 60 feet, will spread fertilizer and litter, only used to spread variable rate lime, will hold up to 30 tons with high side boards, pictured with 20- tons lime, currently set up to run off tractor hydraulics, components to run from PTO, power shaft, pump and tank included, higher side boards included, 30 inch tracks are the same as Cat 65-75-85, extra track included, extra parts and tire/wheel included, manuals and parts books for box and UTC included. Notes: Seller will help with loading and provide as much information on the operation as possible. Item Location: State Center, IA 50247 Equipment Sold "AS IS, WHERE IS": All equipment/property is sold "AS IS, WHERE IS" with no warranty or guarantees, expressed or implied, No operational assessments have been made by DPA Auctions on this item, it has been photographed ONLY.



#153 - Mertz 4330 Dry Floater (TR4100)

Mertz 4330 Dry Floater (TR4100), diesel engine, automatic transmission, heat/AC, AM/FM radio, Fles-Air dry box, Ag Leader monitor, 9704 hours. Notes: Item Location: Hardy, NE 68943 Equipment Sold "AS IS, WHERE IS": All equipment/property is sold "AS IS, WHERE IS" with no warranty or guarantees, expressed or implied, No operational assessments have been made by DPA Auctions on this item, it has been photographed ONLY.



#154 - Dry Tender Trailer (PZ7836)

Dry Tender Trailer (PZ7836), Chandler 10 ton stainless steel dry tender, foldable rear discharge auger, Kohler 10 hp gas engine, tandem axle, 16.5L-16.1 flotation tires. Notes: Item Location: Ingraham, IL 62434 Equipment Sold "AS IS, WHERE IS": All equipment/property is sold "AS IS, WHERE IS" with no warranty or guarantees, expressed or implied, No operational assessments have been made by DPA Auctions on this item, it has been photographed ONLY.



#155 - 1994 Timppe Grain Trailer (PZ7604)

1994 Timppe Grain Trailer (PZ7604), 1994 Timppe hopper bottom grain trailer, tandem axle, spring ride suspension, roll over tarp, 11R24.5 tires. Notes: New brakes & drums, rebuilt suspension. Item Location: Craig, NE 68019 Equipment Sold "AS IS, WHERE IS": All equipment/property is sold "AS IS, WHERE IS" with no warranty or guarantees, expressed or implied, No operational assessments have been made by DPA Auctions on this item, it has been photographed ONLY.



#156 - Banjo pump/Motor (PZ7831)

Banjo pump/Motor (PZ7831), 2" cast iron Banjo pump, Honda 6.5 hp 200GX gas motor, 3" Banjo manual valve, quick coupler. Notes: We are only selling this pump because we upgraded the pump to 3 inches. Pump was working when we exchanged. Item Location: Hills, IA 52235 Equipment Sold "AS IS, WHERE IS": All equipment/property is sold "AS IS, WHERE IS" with no warranty or guarantees, expressed or implied, No operational assessments have been made by DPA Auctions on this item, it has been photographed ONLY.



#157 - Box/Snow Scraper (PZ7832)

Box/Snow Scraper (PZ7832), Box/Snow scraper, 92" wide, 24" deep, 36" tall, 1/2" skid shoe - replaceable, 1/4" blade - replaceable, 680 lbs. Notes: Item Location: Hills, IA 52235 Equipment Sold "AS IS, WHERE IS": All equipment/property is sold "AS IS, WHERE IS" with no warranty or guarantees, expressed or implied, No operational assessments have been made by DPA Auctions on this item, it has been photographed ONLY.



#158 - Liquid Nurse Tank (PZ7837)

Liquid Nurse Tank (PZ7837), 1000 gallon fiberglass liquid nurse tank, 2" Intek Pro 5.5 hp gas engine/pump, plumbing with filter and valves, 1 1/2" discharge hose, agitation, tandem axle, 12.5L-15SL tires on 6 bolt rims. Notes: Item Location: Fairfax, IA 52228 Equipment Sold "AS IS, WHERE IS": All equipment/property is sold "AS IS, WHERE IS" with no warranty or guarantees, expressed or implied, No operational assessments have been made by DPA Auctions on this item, it has been photographed ONLY.



#159 - New Leader Dry Spreader Box (PZ7828)

New Leader Dry Spreader Box (PZ7828), New Leader L4000 G4 MultApplier - Ready model 531916D2 - 14 stainless steel dry spreader box, twin spinner, electric roll over tarp. Notes: Running gear is included. Buyer will be responsible for loading expenses. For more information regarding loading and expenses, please contact Jay @ 507-532-4403. Item Location: Marshall, MN 56258 Equipment Sold "AS IS, WHERE IS": All equipment/property is sold "AS IS, WHERE IS" with no warranty or guarantees, expressed or implied, No operational assessments have been made by DPA Auctions on this item, it has been photographed ONLY.



#160 - Sicam Tire Balancer SBM V655 (MH187)

Sicam Tire Balancer SBM V655 (MH187), works great, dual wheel adapter included. Notes: Was used until pulled out and replaced with newer version. Item Location: Manchester, IA 52057 Equipment Sold "AS IS, WHERE IS": All equipment/property is sold "AS IS, WHERE IS" with no warranty or guarantees, expressed or implied, No operational assessments have been made by DPA Auctions on this item, it has been photographed ONLY.



#161 - Kraus 15-K101 Linebox (AL183)

Kraus 15-K101 Linebox (AL183), 15', has a roll tarp, and ladder on the side. Notes: Just the Linebox truck not included. Item Location: Fairfield, IA 52556 Equipment Sold "AS IS, WHERE IS": All equipment/property is sold "AS IS, WHERE IS" with no warranty or guarantees, expressed or implied, No operational assessments have been made by DPA Auctions on this item, it has been photographed ONLY.



#162 - 2001 14ft Single Axle Dump Truck (MH235)

2001 14ft Single Axle Dump Truck (MH235), 2001 Chevy 6500 engine, Spicer 8-speed manual transmission, aftermarket stereo, flip down sides, tires 225 T70 and are in good condition, shows 79,547 miles. Notes: Miles shown are actual miles. Item Location: Manchester, IA 52057 Equipment Sold "AS IS, WHERE IS": All equipment/property is sold "AS IS, WHERE IS" with no warranty or guarantees, expressed or implied, No operational assessments have been made by DPA Auctions on this item, it has been photographed ONLY.



#163 - 2014 McFarlane 4120 Reel Disk (KMK412)

2014 McFarlane 4120 Reel Disk (KMK412), model RD-4120-RB, 20' wide, Durareel, hydraulic adjustable coulters in front, bought new, less than 1,000 acres of use, includes a box of extra coulters and some hydraulic hoses, used for seed bed preparation, operation and parts manual. Notes: Changing operation to no-till. Item Location: Strum, WI 54770 Equipment Sold "AS IS, WHERE IS": All equipment/property is sold "AS IS, WHERE IS" with no warranty or guarantees, expressed or implied, No operational assessments have been made by DPA Auctions on this item, it has been photographed ONLY.



#164 - 2001 Great Dane Sprayer Tender (PD545)

2001 Great Dane Sprayer Tender (PD545), 28 foot long, single axle air ride, 1 heavy duty 1550 gallon poly tank, 1 standard duty 1550 gallon poly tank, plumbed 3 inch fill and 2 inch out, 1 55 gallon inducer, roll up door with removable stairs and on the curbside door. Notes: Item Location: Oxford, IA 52322 Equipment Sold "AS IS, WHERE IS": All equipment/property is sold "AS IS, WHERE IS" with no warranty or guarantees, expressed or implied, No operational assessments have been made by DPA Auctions on this item, it has been photographed ONLY.



#165 - 2002 Case IH SPX4260 Sprayer (KMK411)

2002 Case IH SPX4260 Sprayer (KMK411), Cummins diesel engine, hydrostatic transmission, heat and air conditioning, Kenwood AM/FM/CD radio, 1,200 gallon stainless steel liquid system, 90' boom, foam marker, top poly rinse tank, Raven monitor, auto steer, 5 section shutoffs, brand new Mitus 380/ 90 R 46 tires, shows 5596 hours. Notes: Item Location: Strum, WI 54770 Equipment Sold "AS IS, WHERE IS": All equipment/property is sold "AS IS, WHERE IS" with no warranty or guarantees, expressed or implied, No operational assessments have been made by DPA Auctions on this item, it has been photographed ONLY.



#166 - 2010 Bowman 4000 Hydraulic Chute (A1188)

2010 Bowman 4000 Hydraulic Chute (A1188), left hand controls, live bottom, weight 4000 LBS, overall length 105", overall height 89", overall width 72", floor plating 3/8", head and tailgate bushings, inside length 94", inside height 67", plating 3/16", frame tube 3" x 3" x 1/4" wall, w/4" rubber padding. Notes: Chute is in working order, needs some bushing work, 3 phase motor can be changed to a 1 phase, contact seller for additional info. Item Location: Fremont, NE 68025 Equipment Sold "AS IS, WHERE IS": All equipment/property is sold "AS IS, WHERE IS" with no warranty or guarantees, expressed or implied, No operational assessments have been made by DPA Auctions on this item, it has been photographed ONLY.



#167 - 2005 Bowman 4000 Hydraulic Chute (AL187)

2005 Bowman 4000 Hydraulic Chute (AL187), left hand controls, live bottom, 3 phase electric motor, weight 4000 LBS, overall length 105", overall height 89", overall width 72", floor plating 3/8", head and tailgate bushings, inside length 94", inside height 67", plating 3/16", frame tube 3" x 3" x 1/4" wall, 3/4" rubber padding. Notes: Chute is in working order, needs some bushing work, 3 phase motor can be changed to a 1 phase contact seller for additional info. Item Location: Fremont, NE 68025 Equipment Sold "AS IS, WHERE IS": All equipment/property is sold "AS IS, WHERE IS" with no warranty or guarantees, expressed or implied, No operational assessments have been made by DPA Auctions on this item, it has been photographed ONLY.



#168 - 2011 Kuhn-Krause Gladiator (DL164)

2011 Kuhn-Krause Gladiator (DL164), 8 row 30" spacing, shanks with mole knife attachment, shear bolt shanks, model number 1200t830. Notes: Acres unknown. Item Location: Grant, NE 69140 Equipment Sold "AS IS, WHERE IS": All equipment/property is sold "AS IS, WHERE IS" with no warranty or guarantees, expressed or implied, No operational assessments have been made by DPA Auctions on this item, it has been photographed ONLY.



#169 - 2011 Kuhn-Krause Gladiator (DL163)

2011 Kuhn-Krause Gladiator (DL163), 16 row 30" spacing pull type, liquid fertilizer system, shear bolt shanks, model number 1200-1630. Notes: Acres unknown. Item Location: Grant, NE 69140 Equipment Sold "AS IS, WHERE IS": All equipment/property is sold "AS IS, WHERE IS" with no warranty or guarantees, expressed or implied, No operational assessments have been made by DPA Auctions on this item, it has been photographed ONLY.



#170 - 1980 Brush Queen Skid (MH228)

1980 Brush Queen Skid (MH228), 18hp Wisconsin engine, 200 gallon poly tank, Hannay hose reel, 100 foot of booster hose, foam capability, (1) one 1 1/2 inch discharge, S/N: 5888513 for motor. Notes: Pump was rebuilt by Alexis Fire, but year it was done is unknown. Item Location: Anamosa, IA 52205 Equipment Sold "AS IS, WHERE IS": All equipment/property is sold "AS IS, WHERE IS" with no warranty or guarantees, expressed or implied, No operational assessments have been made by DPA Auctions on this item, it has been photographed ONLY.



#171 - 1989 Smeal Chevrolet Pumper Fire Truck (MH227)

1989 Smeal Chevrolet Pumper Fire Truck (MH227), Vanguard Series Fire Truck with a 427 drive engine, 454 pump engine, pump and roll, 750 gpm pump, waterous, 1000 gallon tank with 10 gauge rolled steel, 35 foot 3 section aluminum ladder, 16 foot roof ladder, (2) two 10 foot sections of 4 1/2 inch hard suction with low level strainer, (2) two 10 foot sections of 2 1/2 inch hard suction, Dyna Model DP4500E generator, shows 14,071 miles. Notes: Last pump test was done August 2016, seller has Manufacturer's Pumper Construction Records. Item Location: Anamosa, IA 52205 Equipment Sold "AS IS, WHERE IS": All equipment/property is sold "AS IS, WHERE IS" with no warranty or guarantees, expressed or implied, No operational assessments have been made by DPA Auctions on this item, it has been photographed ONLY.



#172 - EFCO Steel Form Panels Plus Corners (AL189)

EFCO Steel Form Panels Plus Corners (AL189), approximately 4700 square feet, accessories and steel ties, the forms range in size from 4" x 24" x 72", most of the area is in 312 pieces of 24" 36" 48" and 72" height, plus corner angles, form clamps, aligner clamps (whalers), and spreader tie pins, there are 500 new EFCO spreader ties from 4" to 12". Notes: Seller bought these forms slightly used in 1976 and used them for there own Spec houses and light commercial construction for several years, approximately 60% of these forms have not been used in over 25 years and have been stored inside, they are still in fair to good condition, the rest of the forms have been used by the seller for small jobs or rented out occasionally and are in fair to poor condition. Item Location: Independence, IA 50644 Equipment Sold "AS IS, WHERE IS": All equipment/property is sold "AS IS, WHERE IS" with no warranty or guarantees, expressed or implied, No operational assessments have been made by DPA Auctions on this item, it has been photographed ONLY.



#173 - Krone 3 pt Disk Mower (TH191)

Krone 3 pt Disk Mower (TH191), 13ft cutting width, 540 pto, this mower comes with books and extra knives, mower skirt is showing wear and the pto shaft guard could use replacing. Notes: Item Location: Madison, KS 66860 Equipment Sold "AS IS, WHERE IS": All equipment/property is sold "AS IS, WHERE IS" with no warranty or guarantees, expressed or implied, No operational assessments have been made by DPA Auctions on this item, it has been photographed ONLY.



#174 - 1989 GMC Topkick (DL177)

1989 GMC Topkick (DL177), CAT diesel engine, 215 hp, manual transmission, rwd drive, 8 cylinders, tires 75%, shows 177000 miles. Notes: Doesn't use oil. Truck has no issues and starts good. Item Location: Lawton, IA 51030 Equipment Sold "AS IS, WHERE IS": All equipment/property is sold "AS IS, WHERE IS" with no warranty or guarantees, expressed or implied, No operational assessments have been made by DPA Auctions on this item, it has been photographed ONLY.



#175 - 2005 VNM200 Volvo (EG345)

2005 VNM200 Volvo (EG345), D12 diesel, 10 speed, 435 HP, AM/FM, Heat, A/C, tires are at 60%, Jake brake, 32000 GVW, truck runs and drives well, shows 1076064.7 miles. Notes: Item Location: Kirksville, MO 63501 Equipment Sold "AS IS, WHERE IS": All equipment/property is sold "AS IS, WHERE IS" with no warranty or guarantees, expressed or implied, No operational assessments have been made by DPA Auctions on this item, it has been photographed ONLY.



#176 - 2004 IHC 4300 (TH193, Unit 98709)

2004 IHC 4300 (TH193, Unit 10596), DT466 diesel engine, 6 speed transmission, AM/FM, A/C, tilt cruise, shows 126812 miles. Notes: Needs engine and new batteries. PLEASE ALLOW AT LEAST 60 DAYS FOR TITLE TRANSFER. Item Location: Greenville, MS 38701 Equipment Sold "AS IS, WHERE IS": All equipment/property is sold "AS IS, WHERE IS" with no warranty or guarantees, expressed or implied, No operational assessments have been made by DPA Auctions on this item, it has been photographed ONLY.



#177 - 2000 Sterling A9500 (DL178)

2000 Sterling A9500 (DL178), Cummins ISM 300hp diesel engine, 7 speed 'road ranger type' transmission, AM/FM radio, older 20 ft Kann stake less aluminum grain box, air ride suspension, cab and seat, a/c, air activated twin screw interlock, PTO and hoist control w/ remote control at the back of the box, 16,000lb front axle, box has 3 working cargo doors, 1 grain door and a plastic liner on the floor, shows 394000 miles. Notes: This is a nice tandem grain truck. Item Location: Cambridge, IL 61238 Equipment Sold "AS IS, WHERE IS": All equipment/property is sold "AS IS, WHERE IS" with no warranty or guarantees, expressed or implied, No operational assessments have been made by DPA Auctions on this item, it has been photographed ONLY.



#179 - 2006 ABU Utility Trailer (KMK418, Unit # 90562)

2006 ABU Utility Trailer (KMK418, Unit # 90562), 18 x 8, tandem axle, hand crank landing gear, Engager break-away system, 7 pin connector, 2 5/16" ball required. Notes: PLEASE ALLOW AT LEAST 60 DAYS FOR TITLE TRANSFER. Item Location: Mapleton, ND 58059 Equipment Sold "AS IS, WHERE IS": All equipment/property is sold "AS IS, WHERE IS" with no warranty or guarantees, expressed or implied, No operational assessments have been made by DPA Auctions on this item, it has been photographed ONLY.

