

## Auction catalog

<b>Title</b>	Online Auction April 10, 2018 10AM Central
<b>Description</b>	The following line of Fertilizer, Farm Implement, Truck, Trailer & Construction Equipment will be sold online with the bidding ending on April 10, 2018. Location of the equipment is given. Bidding within the last minute before the closing of a lot will extend the bidding time by an additional minute. Be prepared to bid accordingly. For more information, contact Del Peterson & Associates: 419 West Judy Drive Fremont NE, 68025 Phone: 800-492-9090 or 402-721-4388 Fax: 402-721-4583 E-mail: auction@delpeterson.com
<b>Date</b>	Tue, Apr 10, 2018
<b>Starts at</b>	10:00 AM
<b>Address</b>	PO Box 654, Fremont, NE 68026 USA
<b>Categories</b>	

### #1 - Sears Table Saw (DR8513)

Sears Table Saw (DR8513), model 11329991, shop table saw, NO BLADE, cart underneath DOES NOT SELL. Notes: Item Location: Bedford, IA 50833 Equipment Sold "AS IS, WHERE IS": All equipment/property is sold "AS IS, WHERE IS" with no warranty or guarantees, expressed or implied, No operational assessments have been made by DPA Auctions on this item, it has been photographed ONLY.



### #4 - Tennant Floor Equipment (DR8525)

Tennant Floor Equipment (DR8525), (5) pieces in this lot, (2) model 2550 commercial vac model 607596, model 1220 carpet steamer, model 1510 floor buffer. Notes: These came out of a hospital and working condition is UNKNOWN. Item Location: Bedford, IA 50833 Equipment Sold "AS IS, WHERE IS": All equipment/property is sold "AS IS, WHERE IS" with no warranty or guarantees, expressed or implied, No operational assessments have been made by DPA Auctions on this item, it has been photographed ONLY.



### #5 - Floor Strippers (DR8526)

Floor Strippers (DR8526), (2) floor strippers, floor buffer, model N4KS LP gas strippers, NO Tank, Matador electric floor buffer. Notes: Item Location: Bedford, IA 50833 Equipment Sold "AS IS, WHERE IS": All equipment/property is sold "AS IS, WHERE IS" with no warranty or guarantees, expressed or implied, No operational assessments have been made by DPA Auctions on this item, it has been photographed ONLY.



### #6 - 2017 John Deere X758 (DR6784)

2017 John Deere X758 (DR6784), diesel engine, shuttle drive, full time 4X4, 54" high capacity deck, hydraulic outlets, 7.8 actual hours, 400 hr/4 year warranty. Notes: Updated with air deflector kit. Item Location: Pawnee City, NE 68420 Equipment Sold "AS IS, WHERE IS": All equipment/property is sold "AS IS, WHERE IS" with no warranty or guarantees, expressed or implied, No operational assessments have been made by DPA Auctions on this item, it has been photographed ONLY.



### #7 - Hypervac (DR8516)

Hypervac (DR8516), Duct Vacuum, hepa filter, duct hose. Notes: Item Location: Bedford, IA 50833 Equipment Sold "AS IS, WHERE IS": All equipment/property is sold "AS IS, WHERE IS" with no warranty or guarantees, expressed or implied, No operational assessments have been made by DPA Auctions on this item, it has been photographed ONLY.



### #8 - Nikro Vac (DR8517)

Nikro Vac (DR8517), model HD55345, Duct Vacuum, hepa filter, triple electric motors, duct hose. Notes: Item Location: Bedford, IA 50833 Equipment Sold "AS IS, WHERE IS": All equipment/property is sold "AS IS, WHERE IS" with no warranty or guarantees, expressed or implied, No operational assessments have been made by DPA Auctions on this item, it has been photographed ONLY.



### #9 - Eagle Air Scrubber (DR8518)

Eagle Air Scrubber (DR8518), model 070770, hooks up to duct work. Notes: Item Location: Bedford, IA 50833 Equipment Sold "AS IS, WHERE IS": All equipment/property is sold "AS IS, WHERE IS" with no warranty or guarantees, expressed or implied, No operational assessments have been made by DPA Auctions on this item, it has been photographed ONLY.



---

### #10 - Broksonic Camera (DR8519)

Broksonic Camera (DR8519), coax cable camera, TV viewing screen, VHS recorder. Notes: Item Location: Bedford, IA 50833 Equipment Sold "AS IS, WHERE IS": All equipment/property is sold "AS IS, WHERE IS" with no warranty or guarantees, expressed or implied, No operational assessments have been made by DPA Auctions on this item, it has been photographed ONLY.



---

### #11 - Van Racks (DR8520)

Van Racks (DR8520), (3) metal storage racks out of work van, 4 casted dolly cart. Notes: Item Location: Bedford, IA 50833 Equipment Sold "AS IS, WHERE IS": All equipment/property is sold "AS IS, WHERE IS" with no warranty or guarantees, expressed or implied, No operational assessments have been made by DPA Auctions on this item, it has been photographed ONLY.



---

### #12 - Work Platform (DR8524)

Work Platform (DR8524), 16' X 4' work platform, removable hand rails, manlift brackets. Notes: Item Location: Bedford, IA 50833 Equipment Sold "AS IS, WHERE IS": All equipment/property is sold "AS IS, WHERE IS" with no warranty or guarantees, expressed or implied, No operational assessments have been made by DPA Auctions on this item, it has been photographed ONLY.



---

### #13 - Pellerin Commercial Dryer (DR8527)

Pellerin Commercial Dryer (DR8527), model EDE75 commercial dryer. Notes: Item Location: Bedford, IA 50833 Equipment Sold "AS IS, WHERE IS": All equipment/property is sold "AS IS, WHERE IS" with no warranty or guarantees, expressed or implied, No operational assessments have been made by DPA Auctions on this item, it has been photographed ONLY.



---

### #14 - Browning Reducer (DR8492)

Browning Reducer (DR8492), shaft mount gear reducer, came off 3500 BPH grain leg. Notes: Item Location: Edgerton, MN 56128 Equipment Sold "AS IS, WHERE IS": All equipment/property is sold "AS IS, WHERE IS" with no warranty or guarantees, expressed or implied, No operational assessments have been made by DPA Auctions on this item, it has been photographed ONLY.



---

### #15 - NH3 Valves (TR4610)

NH3 Valves (TR4610), 5 New NH3 AL 312 1 1/4 Valves 2 1" safety extensions 1 New AL 310 1" globe valve 1 New 1 1/2 x 1 1/4 withdraw valve 3 New AEF 45 Gal minute Excess Flow Valve. Notes: Item Location: Fremont, NE 68025 Equipment Sold "AS IS, WHERE IS": All equipment/property is sold "AS IS, WHERE IS" with no warranty or guarantees, expressed or implied, No operational assessments have been made by DPA Auctions on this item, it has been photographed ONLY.



---

### #16 - Ag Chem Boom (DR8151)

Ag Chem Boom (DR8151), boom rack ONLY, 50' hydraulic folding boom. Notes: Item Location: Saint Martin, MN 56376 Equipment Sold "AS IS, WHERE IS": All equipment/property is sold "AS IS, WHERE IS" with no warranty or guarantees, expressed or implied, No operational assessments have been made by DPA Auctions on this item, it has been photographed ONLY.



---

### #17 - 2009 Air Max 180 (DR8496)

2009 Air Max 180 (DR8496), stainless steel dry applicator system, 70' stainless steel boom, foam markers, stainless steel foam tank, manual tarp, was last on a RoGator 1300. Notes: Was used in fall of 2017, box was rewired in 2013. Item Location: Wayland, MI 49348 Equipment Sold "AS IS, WHERE IS": All equipment/property is sold "AS IS, WHERE IS" with no warranty or guarantees, expressed or implied, No operational assessments have been made by DPA Auctions on this item, it has been photographed ONLY.



---

### #18 - Upright Fuel Storage (DR8494)

Upright Fuel Storage (DR8494), mild steel tank, 10' diameter X 21' tall, has HAD ONLY diesel. Notes: Bill has no way to load this tank. Removal, transportation & liability are the responsibility of the buyer. Tank needs to be removed by July 1, 2018. Item Location: Lyons, NE 68038 Equipment Sold "AS IS, WHERE IS": All equipment/property is sold "AS IS, WHERE IS" with no warranty or guarantees, expressed or implied, No operational assessments have been made by DPA Auctions on this item, it has been photographed ONLY.



---

### #19 - Upright Fiberglass Tank (DR8491)

Upright Fiberglass Tank (DR8491), 15,000 gallon fiberglass liquid tank, 11' diameter X 16' tall, flat bottom, manway side access, plumbed for sparge line. Notes: Bill has no way to load this tank. Removal, transportation & liability are the responsibility of the buyer. Tank needs to be removed by July 1, 2018. Item Location: Lyons, NE 68038 Equipment Sold "AS IS, WHERE IS": All equipment/property is sold "AS IS, WHERE IS" with no warranty or guarantees, expressed or implied, No operational assessments have been made by DPA Auctions on this item, it has been photographed ONLY.



---

### #20 - Upright Fiberglass Tank (DR8492)

Upright Fiberglass Tank (DR8492), 15,000 gallon fiberglass liquid tank, 11' diameter X 16' tall, flat bottom, manway side access, plumbed for sparge line. Notes: Bill has no way to load this tank. Removal, transportation & liability are the responsibility of the buyer. Tank needs to be removed by July 1, 2018. Item Location: Lyons, NE 68038 Equipment Sold "AS IS, WHERE IS": All equipment/property is sold "AS IS, WHERE IS" with no warranty or guarantees, expressed or implied, No operational assessments have been made by DPA Auctions on this item, it has been photographed ONLY.



---

### #21 - Upright Fiberglass Tank (DR8493)

Upright Fiberglass Tank (DR8493), 12,000 gallon fiberglass liquid tank, 10' diameter X 15' tall, flat bottom, manway side access, plumbed for sparge line. Notes: Bill has no way to load this tank. Removal, transportation & liability are the responsibility of the buyer. Tank needs to be removed by July 1, 2018. Item Location: Lyons, NE 68038 Equipment Sold "AS IS, WHERE IS": All equipment/property is sold "AS IS, WHERE IS" with no warranty or guarantees, expressed or implied, No operational assessments have been made by DPA Auctions on this item, it has been photographed ONLY.



---

### #22 - Ag Chem Liquid System (DR8495)

Ag Chem Liquid System (DR8495), 1800 gallon stainless steel liquid system, 60/80' Benson boom, foam markers, stainless steel foam tank, 135 gallon saddle mount rinse tank, hydraulic liquid pump. Notes: Very clean system has had very little use. Item Location: Coatsburg, IL 62325 Equipment Sold "AS IS, WHERE IS": All equipment/property is sold "AS IS, WHERE IS" with no warranty or guarantees, expressed or implied, No operational assessments have been made by DPA Auctions on this item, it has been photographed ONLY.



---

### #23 - 2013 Case IH 1260 Early Riser Planter (TR4607)

2013 Case IH 1260 Early Riser Planter (TR4607), 32 row with 30 inch row spacing, front fold drawbar, vacuum seed meter with central fill for seed, it has a 500 gallon tank for starter fertilizer, its totally tubular with red balls and electric valves. It's only been used a couple of seasons so is in great shape. Notes: Item Location: Elizabeth, IL 61028 Equipment Sold "AS IS, WHERE IS": All equipment/property is sold "AS IS, WHERE IS" with no warranty or guarantees, expressed or implied, No operational assessments have been made by DPA Auctions on this item, it has been photographed ONLY.



---

### #24 - 2000 Mack CH613 (RMC218, Unit 1530)

ITEM HAS BEEN REMOVED AND WILL BE SOLD AT A LATER AUCTION. Notes: Item Location: , Equipment Sold "AS IS, WHERE IS": All equipment/property is sold "AS IS, WHERE IS" with no warranty or guarantees, expressed or implied, No operational assessments have been made by DPA Auctions on this item, it has been photographed ONLY.

---

### #25 - 2015 Bayer Seed Treater (DR7934)

2015 Bayer Seed Treater (DR7934), model RH 2000 treater, includes treater stands & legs, (6) chemical pump stands, seed wheel w/inlet hopper, power & control panels, NO CONVEYORS. Notes: Treater was purchased NEW and only used 1 season. Item Location: Wayland, MI 49348 Equipment Sold "AS IS, WHERE IS": All equipment/property is sold "AS IS, WHERE IS" with no warranty or guarantees, expressed or implied, No operational assessments have been made by DPA Auctions on this item, it has been photographed ONLY.



---

### #26 - Cat 14E Grader (DR8532)

Cat 14E Grader (DR8532), Cat diesel engine, manual transmission, hydraulic 14' mold board, side kick wing blade, direct drive, front fenders. Notes: Blade is in good working order. Enclosed cab has one side glass cracked. Item Location: Houston, MN 55943 Equipment Sold "AS IS, WHERE IS": All equipment/property is sold "AS IS, WHERE IS" with no warranty or guarantees, expressed or implied, No operational assessments have been made by DPA Auctions on this item, it has been photographed ONLY.



---

### #27 - Liquid Tender (DR8530)

Liquid Tender (DR8530), 600 gallon stainless steel liquid tank, tricycle gear, piston pump, 425/65R22.5 tires. Notes: Item Location: Houston, MN 55943 Equipment Sold "AS IS, WHERE IS": All equipment/property is sold "AS IS, WHERE IS" with no warranty or guarantees, expressed or implied, No operational assessments have been made by DPA Auctions on this item, it has been photographed ONLY.



---

### #28 - Case IH 5000 Drill (DR8529)

Case IH 5000 Drill (DR8529), 5400 soybean special, 15' grain drill, 15" spacing's, ground drive, no till coulters, hydraulic markers, Case IH monitor, extra population sprockets. Notes: Item Location: Houston, MN 55943 Equipment Sold "AS IS, WHERE IS": All equipment/property is sold "AS IS, WHERE IS" with no warranty or guarantees, expressed or implied, No operational assessments have been made by DPA Auctions on this item, it has been photographed ONLY.



---

### #29 - Crust Buster DD45X8 Drill (DR8531)

Crust Buster DD45X8 Drill (DR8531), 30' ground drive grain drill, 8" spacing, hydraulic markers, hydraulic fold. Notes: Item Location: Houston, MN 55943 Equipment Sold "AS IS, WHERE IS": All equipment/property is sold "AS IS, WHERE IS" with no warranty or guarantees, expressed or implied, No operational assessments have been made by DPA Auctions on this item, it has been photographed ONLY.



---

### #30 - 2005 Chevy W3500 (DR8522)

2005 Chevy W3500 (DR8522), gas engine, automatic transmission, 15' van box, rear roll up door, aluminum pull out ramp, AM/FM CD radio, air conditioning, shows 44,647 miles. Notes: Item Location: Bedford, IA 50833 Equipment Sold "AS IS, WHERE IS": All equipment/property is sold "AS IS, WHERE IS" with no warranty or guarantees, expressed or implied, No operational assessments have been made by DPA Auctions on this item, it has been photographed ONLY.



---

### #31 - 2005 Chevy 3500 (DR8523)

2005 Chevy 3500 (DR8523), gas engine, automatic transmission, 12' van box, rear roll up door, Tommy lift tailgate, AM/FM radio, air conditioning, front brush guard, shows 112,317 miles. Notes: Item Location: Bedford, IA 50833 Equipment Sold "AS IS, WHERE IS": All equipment/property is sold "AS IS, WHERE IS" with no warranty or guarantees, expressed or implied, No operational assessments have been made by DPA Auctions on this item, it has been photographed ONLY.



---

### #32 - 1999 Ford 250 (DR8521)

1999 Ford 250 (DR8521), gas engine automatic transmission, curb side cargo doors, rear cargo doors, rear receiver hitch, front bucket seats, AM/FM CD radio, air conditioning, cruise control, 225/75R16 tires, shows 225,063 miles. Notes: Battery is weak. Item Location: Bedford, IA 50833 Equipment Sold "AS IS, WHERE IS": All equipment/property is sold "AS IS, WHERE IS" with no warranty or guarantees, expressed or implied, No operational assessments have been made by DPA Auctions on this item, it has been photographed ONLY.



---

### #33 - 2007 BMW 335i (DR8528)

2007 BMW 335i (DR8528), gas engine, (has a knock), automatic transmission, leather interior, AM/FM CD radio, sun roof, rear heat/ac, power windows & locks, shows 111,131 miles. Notes: Engine has a knock. Item Location: Bedford, IA 50833 Equipment Sold "AS IS, WHERE IS": All equipment/property is sold "AS IS, WHERE IS" with no warranty or guarantees, expressed or implied, No operational assessments have been made by DPA Auctions on this item, it has been photographed ONLY.



---

### #34 - 2008 John Deere 777 Lawn Mower (PD702)

2008 John Deere 777 Lawn Mower (PD702), liquid cooled, 27HP, 72 inch 7 iron deck, 1095 hours, great condition. Notes: Item Location: Blencoe, IA 51523 Equipment Sold "AS IS, WHERE IS": All equipment/property is sold "AS IS, WHERE IS" with no warranty or guarantees, expressed or implied, No operational assessments have been made by DPA Auctions on this item, it has been photographed ONLY.



---

### #35 - John Deere 7000 12 Row Planter (TH233)

John Deere 7000 12 Row Planter (TH233), 12 row, 30 inch spacing, planters have row cleaners, box extensions, down pressure springs, John Deere monitor, corn and soy bean meters included. Notes: Planter has been stored inside and is in very good condition. Item Location: Alburnett, IA 52202 Equipment Sold "AS IS, WHERE IS": All equipment/property is sold "AS IS, WHERE IS" with no warranty or guarantees, expressed or implied, No operational assessments have been made by DPA Auctions on this item, it has been photographed ONLY.



---

### #36 - Flatrack (DR8533)

Flatrack (DR8533), 14' X 8' flatbed, 5th wheel style steerable running gear, NEW wood deck. Notes: Item Location: Pawnee City, NE 68420 Equipment Sold "AS IS, WHERE IS": All equipment/property is sold "AS IS, WHERE IS" with no warranty or guarantees, expressed or implied, No operational assessments have been made by DPA Auctions on this item, it has been photographed ONLY.





---

### #37 - 1600 Gallon Water Tank (ED460)

1600 Gallon Water Tank (ED460), 1635 gallon tank with all bow straps, tank has 2" and 3" bungs, used only for storing water inside of building, never used on trailer. Notes: Item Location: Yorkville, IL 60560 Equipment Sold "AS IS, WHERE IS": All equipment/property is sold "AS IS, WHERE IS" with no warranty or guarantees, expressed or implied, No operational assessments have been made by DPA Auctions on this item, it has been photographed ONLY.



---

### #38 - Woods 750 3 Point Backhoe (ED459)

Woods 750 3 Point Backhoe (ED459), 8' reach, 18" bucket with good teeth, has been converted from PTO drive to Direct Hydraulic Drive, works great, no known issues. Notes: Item Location: Yorkville, IL 60560 Equipment Sold "AS IS, WHERE IS": All equipment/property is sold "AS IS, WHERE IS" with no warranty or guarantees, expressed or implied, No operational assessments have been made by DPA Auctions on this item, it has been photographed ONLY.



---

### #39 - 30 KW Onan Generator (ED461)

30 KW Onan Generator (ED461), 30 KW 3PH, 20KW 1 PH gas/natural gas generator, fully functional when removed from service, actual hours are unknown, meter is broke and malfunctioning, was purchased with around 2000 hours and used very little as a backup for our farm. Notes: Item Location: Yorkville, IL 60560 Equipment Sold "AS IS, WHERE IS": All equipment/property is sold "AS IS, WHERE IS" with no warranty or guarantees, expressed or implied, No operational assessments have been made by DPA Auctions on this item, it has been photographed ONLY.



---

### #40 - 30" Tractor Tracks (ED453)

30" Tractor Tracks (ED453), Used set of 30" low ground disturbance belts for uses with CAT 65, 75, 85, 95, good rubber left, guide blocks are in excellent shape, replaced off 65 to go to narrower track to fit within traffic patterns. Notes: Item Location: Yorkville, IL 60560 Equipment Sold "AS IS, WHERE IS": All equipment/property is sold "AS IS, WHERE IS" with no warranty or guarantees, expressed or implied, No operational assessments have been made by DPA Auctions on this item, it has been photographed ONLY.



---

### #41 - 1998 Terra Gator 8103 Dry Floater (PZ8796, Unit 724)

1998 Terra Gator 8103 Dry Floater (PZ8796, Unit 724), John Deere diesel engine, Terra Shift transmission, air conditioning, Am/Fm cassette radio, Ag Force model FL3024-13 stainless steel twin bin dry spreader box (S/N 12507), twin spinner, all hydraulic, 66x43.00-25 flotation tires, Raven Viper Pro montior, EZ Guide 250 light bar, dash has been changed so the hours are not accurate. Notes: Item Location: Lyle, MN 55953 Equipment Sold "AS IS, WHERE IS": All equipment/property is sold "AS IS, WHERE IS" with no warranty or guarantees, expressed or implied, No operational assessments have been made by DPA Auctions on this item, it has been photographed ONLY.



---

### #42 - 2000 Cub Cadet Mower (PZ8798, Unit 4487)

2000 Cub Cadet Mower (PZ8798, Unit 4487), 2000 Cub Cadet model 3654 commercial mower, Kolher Command 25 gas engine, hydrostatic transmission (hydro is out), 13x5.00-6 front tires, 24x12.00-12 rear tires, shows 822 hours. Notes: Item Location: Osage, IA 50461 Equipment Sold "AS IS, WHERE IS": All equipment/property is sold "AS IS, WHERE IS" with no warranty or guarantees, expressed or implied, No operational assessments have been made by DPA Auctions on this item, it has been photographed ONLY.



---

### #43 - Floater Parts (PZ8797)

Floater Parts (PZ8797), 2 - rebuilt generators with belts, 2 - Servo valves, 3 - motor sensors, 2 - bin sensors, jack shaft. Notes: Item Location: Lyle, MN 55953 Equipment Sold "AS IS, WHERE IS": All equipment/property is sold "AS IS, WHERE IS" with no warranty or guarantees, expressed or implied, No operational assessments have been made by DPA Auctions on this item, it has been photographed ONLY.



---

### #44 - Simonsen Dry Spreader Box (PZ8809)

Simonsen Dry Spreader Box (PZ8809), Simonsen model 2584S dry spreader box, single spinner, PTO, 19L-16.1 flotation tires. Notes: Item Location: Arlington, IA 50606 Equipment Sold "AS IS, WHERE IS": All equipment/property is sold "AS IS, WHERE IS" with no warranty or guarantees, expressed or implied, No operational assessments have been made by DPA Auctions on this item, it has been photographed ONLY.



### #45 - 1991 Freightliner Dry Tender Truck (PZ8801, Unit 2118)

1991 Freightliner Dry Tender Truck (PZ8801, Unit 2118), Cat diesel engine, 15 speed transmission, air conditioning, heat, Am/Fm cassette radio, engine brake, tandem axle, full screw, air ride suspension, Willmar 16 ton dry tender box, rear discharge auger, all hydraulic, roll over tarp, 11R22.5 tires, shows 276,246 miles. Notes: 4/2/18 Truck just developed a water leak, possible head gasket out. Item Location: Arlington, IA 50606 Equipment Sold "AS IS, WHERE IS": All equipment/property is sold "AS IS, WHERE IS" with no warranty or guarantees, expressed or implied, No operational assessments have been made by DPA Auctions on this item, it has been photographed ONLY.



### #46 - Coats Tire machine (PZ8810)

Coats Tire machine (PZ8810), Coats BaseLine 200 tire machine. Notes: Item Location: Arlington, IA 50606 Equipment Sold "AS IS, WHERE IS": All equipment/property is sold "AS IS, WHERE IS" with no warranty or guarantees, expressed or implied, No operational assessments have been made by DPA Auctions on this item, it has been photographed ONLY.



### #47 - 1988 Big A 2800 Liquid Floater (PZ8833, Unit 54)

1988 Big A 2800 Liquid Floater (PZ8833, Unit 54), Cummins diesel engine, Allison automatic transmission, air conditioning, heat, 1550 gallon stainless steel liquid system, 60' boom, foam marker, stainless steel foam marker tank, rear poly rinse tank, Firestone 66x43.00-25 front tire, Good Year 1000/50R25 rear tires, EZ steer, Trimble Field - IQ, CFX lightbar, shows 3315 hours, 33,384 miles. Notes: Item Location: Grinnell, IA 50112 Equipment Sold "AS IS, WHERE IS": All equipment/property is sold "AS IS, WHERE IS" with no warranty or guarantees, expressed or implied, No operational assessments have been made by DPA Auctions on this item, it has been photographed ONLY.



### #48 - 2011 Dodge Crew Durango (NJP1257)

2011 Dodge Crew Durango (NJP1257), gas engine, Injen Technology filter, automatic transmission, AWD, heat, air conditioning, Am/Fm radio, tires 265/60R18, shows 160,003 miles. Notes: Less than 5,000 miles on NEW tires. Item Location: Fremont, NE 68025 Equipment Sold "AS IS, WHERE IS": All equipment/property is sold "AS IS, WHERE IS" with no warranty or guarantees, expressed or implied, No operational assessments have been made by DPA Auctions on this item, it has been photographed ONLY.



### #49 - NEW Hitch Doc Fuel Trailer (TR001)

NEW Hitch Doc Fuel Trailer (TR001), Model HFC500, 10 gauge double seam welded tank, full length baffled tanks, 2" anti-slosh tank filler cap and vent, 1-1/2" drain plug, electric brakes w/ breakaway system and safety chains, liquid - two component paint and primer, 12 GPM 12 volt fuel pump, 1" hose, 10 Micron filter, 7,000lbs square lift jack, dual torsion axles: 3,500lbs, DOT approved incandescent tail lights, stop lights, front and rear side marker lights, adjustable 2-5/16" ball hitch, fuel gauge with infinite fuel level indicator, rock guard kit, 205/75/15 tires and rims, bolt on fenders. Notes: Please allow 2-3 weeks for delivery. Item Location: Fremont, NE 68025 Equipment Sold "AS IS, WHERE IS": All equipment/property is sold "AS IS, WHERE IS" with no warranty or guarantees, expressed or implied, No operational assessments have been made by DPA Auctions on this item, it has been photographed ONLY.



### #50 - Mitsubishi Forklift (PZ8837)

Mitsubishi Forklift (PZ8837), Mitsubishi model FG25B forklift, gas engine, shuttle shift transmission, canopy, 7.00-12 front tires, shows 6833 hours. Notes: Non runner. Item Location: Mingo, IA 50168 Equipment Sold "AS IS, WHERE IS": All equipment/property is sold "AS IS, WHERE IS" with no warranty or guarantees, expressed or implied, No operational assessments have been made by DPA Auctions on this item, it has been photographed ONLY.



### #51 - Clark Forklift (PZ8839)

Clark Forklift (PZ8839), Clark model GPX 25 forklift, gas engine, shuttle shift transmission, canopy, 7.00-12 front tires, 6.50-10 rear tires, shows 2967 hours. Notes: Non runner. Item Location: Mingo, IA 50168 Equipment Sold "AS IS, WHERE IS": All equipment/property is sold "AS IS, WHERE IS" with no warranty or guarantees, expressed or implied, No operational assessments have been made by DPA Auctions on this item, it has been photographed ONLY.



### #52 - 1994 Kenworth T600 Truck (PZ8835, Unit 42754)

1994 Kenworth T600 Truck (PZ8835, Unit 42754), Cummins N14 diesel engine, 9 speed transmission, air conditioning, heat, sleeper, cruise control, engine brake, full screw, air ride suspension, 5th wheel, 285/75R24.5 tires, shows 416,853 miles. Notes: Blown motor. PLEASE ALLOW AT LEAST 60 DAYS FOR TITLE TRANSFER. Item Location: Mingo, IA 50168 Equipment Sold "AS IS, WHERE IS": All equipment/property is sold "AS IS, WHERE IS" with no warranty or guarantees, expressed or implied, No operational assessments have been made by DPA Auctions on this item, it has been photographed ONLY.



---

### #53 - 1993 Mack CH613 Liquid Nurse Truck (PZ8838, Unit 42756)

1993 Mack CH613 Liquid Nurse Truck (PZ8838, Unit 42756), diesel engine, 9 speed transmission, air conditioning, heat, Am/Fm CD stereo, cruise control, tandem axle, full screw, air ride suspension, 3200 gallon stainless steel liquid nurse tank, 11R22.5 front tires, 295/75R22.5 rear tires, shows 918,919 miles. Notes: PLEASE ALLOW AT LEAST 60 DAYS FOR TITLE TRANSFER. Item Location: Mingo, IA 50168 Equipment Sold "AS IS, WHERE IS": All equipment/property is sold "AS IS, WHERE IS" with no warranty or guarantees, expressed or implied, No operational assessments have been made by DPA Auctions on this item, it has been photographed ONLY.



---

### #54 - 2006 Chevrolet 2500HD Extended Cab Pickup (PZ8836, Unit #42746)

2006 Chevrolet 2500HD Extended Cab Pickup (PZ8836, Unit #42746), 4x4, gas engine, automatic transmission, air conditioning, heat, Am/Fm CD stereo, cruise control, power windows & locks, running boards, LT245/75R16 tires, shows 246,996 miles. Notes: Crack in windshield. PLEASE ALLOW AT LEAST 60 DAYS FOR TITLE TRANSFER. Item Location: Mingo, IA 50168 Equipment Sold "AS IS, WHERE IS": All equipment/property is sold "AS IS, WHERE IS" with no warranty or guarantees, expressed or implied, No operational assessments have been made by DPA Auctions on this item, it has been photographed ONLY.



---

### #57 - 1975 Big A 2700 Liquid Floater (PZ8834, Unit 547)

1975 Big A 2700 Liquid Floater (PZ8834, Unit 547), Cummins diesel engine, Allison automatic transmission, air conditioning, heat, Am/Fm radio, 1550 gallon stainless steel liquid system, 60' boom, foam marker, stainless steel foam marker tank, stainless steel chemical eductor, PrimeX 66x43.00-25 tires, Raven SCS440 monitor, shows 43,652 miles. Notes: Engine has approx. 1,500 hours on it. Item Location: Grinnell, IA 50112 Equipment Sold "AS IS, WHERE IS": All equipment/property is sold "AS IS, WHERE IS" with no warranty or guarantees, expressed or implied, No operational assessments have been made by DPA Auctions on this item, it has been photographed ONLY.



---

### #58 - USC LP 800 Seed Treater (PZ8789)

USC LP 800 Seed Treater (PZ8789), USC LP 800 seed treater, stainless steel tank, control panel, electric cord. Notes: Item Location: Northwood, IA 50459 Equipment Sold "AS IS, WHERE IS": All equipment/property is sold "AS IS, WHERE IS" with no warranty or guarantees, expressed or implied, No operational assessments have been made by DPA Auctions on this item, it has been photographed ONLY.



---

### #59 - NEW Hitch Doc Fuel Trailer (TR002)

NEW Hitch Doc Fuel Trailer (TR002), NEW NEVER USED, model HFC750, tandem axle, 750 gallon fuel tank, 10 gauge double seam welded, tank is independent from chassis & can be removed, 2 full length baffles, 2" anti-slosh tank filler cap & vent, cap vents @ 2.5 PSI, 1 1/2" drain plug, electric brakes w/breakaway system & safety chains, liquid-two component pain & primer, 12 GPM 12 volt fuel pump, 1" hose, auto shut off nozzle, 10 Micron filter, 7000 lb square lift jack, dual torsion axles 3500lb, DOT approved lights, 2 5/16 ball hitch, top mounted fuel gauge, rock guard kit w/ diamond plate on fenders, 235/80R16 tires, bolt on fenders. Notes: Please allow 2-3 weeks for delivery. Item Location: Fremont, NE 68025 Equipment Sold "AS IS, WHERE IS": All equipment/property is sold "AS IS, WHERE IS" with no warranty or guarantees, expressed or implied, No operational assessments have been made by DPA Auctions on this item, it has been photographed ONLY.



---

### #60 - 2015 Timppe Super Hopper Dry Tender Trailer (PZ7762)

2015 Timppe Super Hopper Dry Tender Trailer (PZ7762), 2015 Timppe Super Hopper Combo 4 compartment dry tender trailer, stainless steel under hopper conveyor, self contained diesel engine, stainless steel rear discharge conveyor, tandem axle, air ride suspension, Thunder 5000 series electric roll over tarp, 295/75R22.5 tires. Notes: PLEASE ALLOW AT LEAST 60 DAYS FOR TITLE TRANSFER. Item Location: Centerville, SD 57014 Equipment Sold "AS IS, WHERE IS": All equipment/property is sold "AS IS, WHERE IS" with no warranty or guarantees, expressed or implied, No operational assessments have been made by DPA Auctions on this item, it has been photographed ONLY.



---

### #61 - KSI Seed Hopper (PZ8790)

KSI Seed Hopper (PZ8790), Ksi seed hopper, manual gate, stands. Notes: Item Location: Northwood, IA 50459 Equipment Sold "AS IS, WHERE IS": All equipment/property is sold "AS IS, WHERE IS" with no warranty or guarantees, expressed or implied, No operational assessments have been made by DPA Auctions on this item, it has been photographed ONLY.



---

### #64 - 2007 Brenner Fuel Transport Trailer (PZ8807, Unit 5070)

2007 Brenner Fuel Transport Trailer (PZ8807, Unit 5070), 2007 Brenner 9500 gallon 4 compartment (3500-2000-1200-2800) aluminum petroleum transport trailer, FloTech model FT204 retain/overflow monitor, Blackmer pump, aluminum storage box, tandem axle, 11R22.5 tires, aluminum rims. Notes: Item Location: Maynard, IA 50655 Equipment Sold "AS IS, WHERE IS": All equipment/property is sold "AS IS, WHERE IS" with no warranty or guarantees, expressed or implied, No operational assessments have been made by DPA Auctions on this item, it has been photographed ONLY.



### #65 - Good Year Flotation Tires (PZ8828)

Good Year Flotation Tires (PZ8828), 2 - Good Year 48x31.00-20 flotation tires. Notes: Item Location: Waverly, IA 50677 Equipment Sold "AS IS, WHERE IS": All equipment/property is sold "AS IS, WHERE IS" with no warranty or guarantees, expressed or implied, No operational assessments have been made by DPA Auctions on this item, it has been photographed ONLY.



### #66 - PrimeX Flotation Tires (PZ8829)

PrimeX Flotation Tires (PZ8829), 2 - PrimeX 48x31.00-20 flotation tires. Notes: Item Location: Waverly, IA 50677 Equipment Sold "AS IS, WHERE IS": All equipment/property is sold "AS IS, WHERE IS" with no warranty or guarantees, expressed or implied, No operational assessments have been made by DPA Auctions on this item, it has been photographed ONLY.



### #67 - 1994 Wilson Flatbed Trailer (PZ8824, Unit 122)

1994 Wilson Flatbed Trailer (PZ8824, Unit 122), 1994 Wilson 48' flatbed trailer, spread axle, 295/75R22.5 tires, pro tech headache rack. Notes: Item Location: Waverly, IA 50677 Equipment Sold "AS IS, WHERE IS": All equipment/property is sold "AS IS, WHERE IS" with no warranty or guarantees, expressed or implied, No operational assessments have been made by DPA Auctions on this item, it has been photographed ONLY.



### #68 - 1978 Transcraft Flatbed Trailer (PZ8825, Unit 124)

1978 Transcraft Flatbed Trailer (PZ8825, Unit 124), 1978 Transcraft flatbed trailer, tandem axle, 10.00-20 tires, aluminum storage box, headache rack. Notes: Item Location: Waverly, IA 50677 Equipment Sold "AS IS, WHERE IS": All equipment/property is sold "AS IS, WHERE IS" with no warranty or guarantees, expressed or implied, No operational assessments have been made by DPA Auctions on this item, it has been photographed ONLY.



### #69 - NEW NEVER USED Hitch Doc 110 Fuel Pod (TR0009)

NEW NEVER USED Hitch Doc 110 Fuel Pod (TR0009), 110 gal, 44" length, 56.5" Width, 37" overall height, Empty 470 lbs, loaded 1250 lbs, 12GPM 12 volt pump, 1" x 20' hose, Multiple Lifting Options, Durable Storage Compartment, 12 volt fuel pump with 12 GPM, Multiple Hose Position Variations, Heavy Duty 12V battery kit, 10 Micron Fuel Filter, Powder-Coat Finish, drain plug, 10 gauge double seam welds, dual baffled, fuel gauge. Notes: Fits seed box tenders and standard truck beds. Item Location: Fremont, NE 68025 Equipment Sold "AS IS, WHERE IS": All equipment/property is sold "AS IS, WHERE IS" with no warranty or guarantees, expressed or implied, No operational assessments have been made by DPA Auctions on this item, it has been photographed ONLY.



### #70 - 1992 Fruehauf Van Trailer (PZ8826, Unit 130)

1992 Fruehauf Van Trailer (PZ8826, Unit 130), 1992 Fruehauf van trailer, cargo doors, tandem axle, air ride suspension, 11R22.5 tires. Notes: Item Location: Waverly, IA 50677 Equipment Sold "AS IS, WHERE IS": All equipment/property is sold "AS IS, WHERE IS" with no warranty or guarantees, expressed or implied, No operational assessments have been made by DPA Auctions on this item, it has been photographed ONLY.



### #71 - 1999 Utilitiy 53' Van Trailer (PZ8830, Unit 142)

1999 Utilitiy 53' Van Trailer (PZ8830, Unit 142), 1999 Utility 53' van trailer, cargo doors, tandem axle, air ride suspension, sliding tandems, 295/75R22.5 tires. Notes: Item Location: Waverly, IA 50677 Equipment Sold "AS IS, WHERE IS": All equipment/property is sold "AS IS, WHERE IS" with no warranty or guarantees, expressed or implied, No operational assessments have been made by DPA Auctions on this item, it has been photographed ONLY.



### #72 - 1985 Polar Petroleum Trailer (PZ8827)

1985 Polar Petroleum Trailer (PZ8827), 1985 Polar 9500 gallon 4 compartment (2800-1700-1000-4000) aluminum petroleum transport trailer, Scully overfill prevention monitor, Blackmer pump, storage box, tandem axle, 11R22.5 tires. Notes: Item Location: Waverly, IA 50677 Equipment Sold "AS IS, WHERE IS": All equipment/property is sold "AS IS, WHERE IS" with no warranty or guarantees, expressed or implied, No operational assessments have been made by DPA Auctions on this item, it has been photographed ONLY.



### #73 - 2007 IHC 7400 Cab/Chassis Truck (PZ8820, Unit 135)

2007 IHC 7400 Cab/Chassis Truck (PZ8820, Unit 135), diesel engine, 10 speed transmission, air conditioning, heat, Am/Fm radio, cruise control, tandem axle, full screw, air ride suspension, 315/80R22.5 front tires, 11R22.5 rear tires, shows 194,967 miles, 13,644 hours. Notes: Item Location: Waterloo, IA 50703 Equipment Sold "AS IS, WHERE IS": All equipment/property is sold "AS IS, WHERE IS" with no warranty or guarantees, expressed or implied, No operational assessments have been made by DPA Auctions on this item, it has been photographed ONLY.





---

**#74 - 2009 Dodge Grand Caravan SE Mini Van (PZ8831, Unit 209)**

2009 Dodge Grand Caravan SE Mini Van (PZ8831, Unit 209), gas engine, automatic transmission, air conditioning, heat, Am/Fm CD stereo, cruise control, power windows & locks, power drivers seat, 215/65R16 tires, shows 167,488 miles. Notes: Item Location: Waverly, IA 50677 Equipment Sold "AS IS, WHERE IS": All equipment/property is sold "AS IS, WHERE IS" with no warranty or guarantees, expressed or implied, No operational assessments have been made by DPA Auctions on this item, it has been photographed ONLY.



---

**#75 - 2009 Dodge Grand Caravan SE Mini Van (PZ8832, Unit 191)**

2009 Dodge Grand Caravan SE Mini Van (PZ8832, Unit 191), gas engine, automatic transmission, air conditioning, heat, Am/Fm CD stereo, cruise control, power windows & locks, power drivers seat, 235/60R16 tires, shows 182,051 miles. Notes: Item Location: Waverly, IA 50677 Equipment Sold "AS IS, WHERE IS": All equipment/property is sold "AS IS, WHERE IS" with no warranty or guarantees, expressed or implied, No operational assessments have been made by DPA Auctions on this item, it has been photographed ONLY.



---

**#77 - 2004 B-B Dry Tender Trailer (PZ8783, Unit 3522)**

2004 B-B Dry Tender Trailer (PZ8783, Unit 3522), 2004 B-B dry tender trailer, Willmar 24 ton dry tender box (S/N 24SSJPSS110), side discharge auger, roll over tarp, Kubota V3600-T self contained diesel engine, shows 93 hours, tandem axle, cheater axle, 255/70R22.5 tires, 235/75R17.5 cheater tires. Notes: Item Location: Chapin, IA 50427 Equipment Sold "AS IS, WHERE IS": All equipment/property is sold "AS IS, WHERE IS" with no warranty or guarantees, expressed or implied, No operational assessments have been made by DPA Auctions on this item, it has been photographed ONLY.



---

**#78 - 1993 Kenworth T600 Day Cab Truck (PZ8845, Unit 43134)**

1993 Kenworth T600 Day Cab Truck (PZ8845, Unit 43134), Detroit Series 60 12.7L diesel engine, 9 speed transmission, air conditioning, heat, Am/Fm radio, cruise control, engine brake, tandem axle, full screw, air ride suspension, 5th wheel, 230" wheel base, 11R24.5 tires, shows 981,294 miles. Notes: PLEASE ALLOW AT LEAST 60 DAYS FOR TITLE TRANSFER. Item Location: Oneida, IL 61467 Equipment Sold "AS IS, WHERE IS": All equipment/property is sold "AS IS, WHERE IS" with no warranty or guarantees, expressed or implied, No operational assessments have been made by DPA Auctions on this item, it has been photographed ONLY.



---

**#79 - 1991 Chevrolet Kodiak Dry Tender Truck (PZ8799, Unit 351)**

1991 Chevrolet Kodiak Dry Tender Truck (PZ8799, Unit 351) Fuel injection gas engine, 5 speed transmission, 2 speed rear end, air conditioning, heat, Am/Fm radio, single axle, 10 ton dry tender box, rear discharge auger, all hydraulic, roll over tarp, 11R22.5 tires, shows 244,688 miles. Notes: Item Location: Charles City, IA 50616 Equipment Sold "AS IS, WHERE IS": All equipment/property is sold "AS IS, WHERE IS" with no warranty or guarantees, expressed or implied, No operational assessments have been made by DPA Auctions on this item, it has been photographed ONLY.



---

**#80 - Shop Lights (PZ8840)**

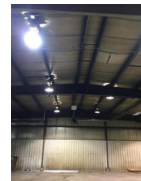
Shop Lights (PZ8840), 15 - shop lights. Notes: Item Location: De Witt, IA 52742 Equipment Sold "AS IS, WHERE IS": All equipment/property is sold "AS IS, WHERE IS" with no warranty or guarantees, expressed or implied, No operational assessments have been made by DPA Auctions on this item, it has been photographed ONLY.



---

**#81 - Shop Lights (PZ8841)**

Shop Lights (PZ8841), 9 - round shop lights. Notes: Will not be available until building electrical remodel is complete. Please call seller for more information. Item Location: De Witt, IA 52742 Equipment Sold "AS IS, WHERE IS": All equipment/property is sold "AS IS, WHERE IS" with no warranty or guarantees, expressed or implied, No operational assessments have been made by DPA Auctions on this item, it has been photographed ONLY.



---

**#82 - Electrical Boxes (PZ8842)**

Electrical Boxes (PZ8842), Miscellaneous electrical and fuse boxes. Notes: Item Location: De Witt, IA 52742 Equipment Sold "AS IS, WHERE IS": All equipment/property is sold "AS IS, WHERE IS" with no warranty or guarantees, expressed or implied, No operational assessments have been made by DPA Auctions on this item, it has been photographed ONLY.



---

### #83 - Electrical Buse Duct (PZ8843)

Electrical Buse Duct (PZ8843), 30' electrical buse duct. Notes: Item Location: De Witt, IA 52742 Equipment Sold "AS IS, WHERE IS": All equipment/property is sold "AS IS, WHERE IS" with no warranty or guarantees, expressed or implied, No operational assessments have been made by DPA Auctions on this item, it has been photographed ONLY.



---

### #84 - Truck Crane (PZ8844)

Truck Crane (PZ8844), Venturo truck crane, 2,200 lb capacity, reach 6'-14'. Notes: Item Location: Hazleton, IA 50641 Equipment Sold "AS IS, WHERE IS": All equipment/property is sold "AS IS, WHERE IS" with no warranty or guarantees, expressed or implied, No operational assessments have been made by DPA Auctions on this item, it has been photographed ONLY.



---

### #85 - NEW NEVER USED Hitch Doc 110 Fuel Pod (TR0008)

NEW NEVER USED Hitch Doc 110 Fuel Pod (TR0008), 110 gal, 44" length, 56.5" Width, 37" overall height, Empty 470 lbs, loaded 1250 lbs, 12GPM 12 volt pump, 1" x 20' hose, Multiple Lifting Options, Durable Storage Compartment, 12 volt fuel pump with 12 GPM, Multiple Hose Position Variations, Heavy Duty 12V battery kit, 10 Micron Fuel Filter, Powder-Coat Finish, drain plug, 10 gauge double seam welds, dual baffled, fuel gauge. Notes: Includes 25 gallon DEF System, poly tank, DEF approved pump and 3/4" x 20' hose/nozzle. Fits seed box tenders and standard truck beds. Item Location: Fremont, NE 68025 Equipment Sold "AS IS, WHERE IS": All equipment/property is sold "AS IS, WHERE IS" with no warranty or guarantees, expressed or implied, No operational assessments have been made by DPA Auctions on this item, it has been photographed ONLY.



---

### #86 - 1997 GMC 2500 Pickup (NP6300)

1997 GMC 2500 Pickup (NP6300), 350 engine, automatic transmission, NO bed, shows 254,123 miles. Notes: Brakes DO NOT WORK. Item Location: Cissna Park, IL 60924 Equipment Sold "AS IS, WHERE IS": All equipment/property is sold "AS IS, WHERE IS" with no warranty or guarantees, expressed or implied, No operational assessments have been made by DPA Auctions on this item, it has been photographed ONLY.



---

### #87 - 2009 RoGator SSc 1084 Sprayer (PZ8894, Unit 4628)

2009 RoGator SSc 1084 Sprayer (PZ8894, Unit 4628), Cat diesel engine, hydrostatic transmission, air conditioning, heat, Am/Fm CD stereo, 1080 gallon stainless steel liquid system (S/N LAGCASSC8HNUS11104), 100' boom, foam marker, stainless steel foam marker tank, top poly rinse tank, Michelin VF380/90R46 tires, Raven monitor, Norac UC4+ hight control, lightbar, Raven SmarTrax, shows 3227 hours. Notes: Item Location: Fenton, IL 61251 Equipment Sold "AS IS, WHERE IS": All equipment/property is sold "AS IS, WHERE IS" with no warranty or guarantees, expressed or implied, No operational assessments have been made by DPA Auctions on this item, it has been photographed ONLY.



---

### #88 - Doyle Dry Blender (PZ8896)

Doyle Dry Blender (PZ8896), Doyle 10 ton drum blender, 30 hp motor, hopper with stainless steel conveyor, stainless steel loadout conveyor, Baldor 10 hp electric motor digital scale. Notes: Item Location: Fenton, IL 61251 Equipment Sold "AS IS, WHERE IS": All equipment/property is sold "AS IS, WHERE IS" with no warranty or guarantees, expressed or implied, No operational assessments have been made by DPA Auctions on this item, it has been photographed ONLY.



---

### #89 - 2005 Terra Gator 8103 Liquid Floater (PZ8907)

2005 Terra Gator 8103 Liquid Floater (PZ8907), John Deere diesel engine, Terra Shift transmission, air conditioning, heat, Am/Fm CD stereo, 1800 gallon stainless steel liquid system, 60/80' boom (S/N L181984), foam marker, stainless steel foam marker tank, top poly rinse tank, 1050/50R25 tires, Raven SCS460 monitor, Raven Cruiser II lightbar, shows 7078 hours, 55,500 miles. Notes: Crack in windshield, rear tires will be replaced. Item Location: Lewistown, IL 61542 Equipment Sold "AS IS, WHERE IS": All equipment/property is sold "AS IS, WHERE IS" with no warranty or guarantees, expressed or implied, No operational assessments have been made by DPA Auctions on this item, it has been photographed ONLY.



---

### #90 - Doyle Conveyor (PZ8909)

Doyle Conveyor (PZ8909), Doyle stainless steel conveyor, 18" belt, Toshiba 10 hp electric motor. Notes: Item Location: Adair, IL 61411 Equipment Sold "AS IS, WHERE IS": All equipment/property is sold "AS IS, WHERE IS" with no warranty or guarantees, expressed or implied, No operational assessments have been made by DPA Auctions on this item, it has been photographed ONLY.



---

### #91 - 2006 Chevrolet 2500HD 4x4 Pickup (CP720)

2006 Chevrolet 2500HD 4x4 Pickup (CP720), Duramax 6.6L turbo diesel LBZ engine, Allison automatic transmission, LT package, heat, air conditioning, Am/Fm CD radio, cruise, power windows and locks, power driver's seat, Line-X spray-on bed liner, 265/75R16 tires, tow package, shows 111,618 miles. Notes: Item Location: Springfield, NE 68059 Equipment Sold "AS IS, WHERE IS": All equipment/property is sold "AS IS, WHERE IS" with no warranty or guarantees, expressed or implied, No operational assessments have been made by DPA Auctions on this item, it has been photographed ONLY.



---

### #92 - Doyle Conveyor (PZ8910)

Doyle Conveyor (PZ8910), Doyle stainless steel portable conveyor, 24" belt, GE 10 hp electric motor, cord, P205/75R15 tires. Notes: Item Location: Macomb, IL 61455 Equipment Sold "AS IS, WHERE IS": All equipment/property is sold "AS IS, WHERE IS" with no warranty or guarantees, expressed or implied, No operational assessments have been made by DPA Auctions on this item, it has been photographed ONLY.



---

### #93 - Doyle Lime Box (PZ8913)

Doyle Lime Box (PZ8913), Doyle lime spreader box, twin spinner, all hydraulic. Notes: Running gear NOT included. Item Location: Macomb, IL 61455 Equipment Sold "AS IS, WHERE IS": All equipment/property is sold "AS IS, WHERE IS" with no warranty or guarantees, expressed or implied, No operational assessments have been made by DPA Auctions on this item, it has been photographed ONLY.



---

### #94 - Doyle/Tyler Floater Loader (PZ8912)

Doyle/Tyler Floater Loader (PZ8912), Doyle/Tyler self contained portable floater loader, 24" belt, hydraulic wheel motors, Kohler Command 20 electric start gas engine, P235/75R15 tires. Notes: Item Location: Macomb, IL 61455 Equipment Sold "AS IS, WHERE IS": All equipment/property is sold "AS IS, WHERE IS" with no warranty or guarantees, expressed or implied, No operational assessments have been made by DPA Auctions on this item, it has been photographed ONLY.



---

### #95 - Surefire Treater (PZ8823)

Surefire Treater (PZ8823), Surefire Super Treater, portable, Honda GX 270 gas engine, poly eductor, auger, ST175/80D13 tires. Notes: Item Location: Macomb, IL 61455 Equipment Sold "AS IS, WHERE IS": All equipment/property is sold "AS IS, WHERE IS" with no warranty or guarantees, expressed or implied, No operational assessments have been made by DPA Auctions on this item, it has been photographed ONLY.



---

### #96 - 2008 John Deere 4930 Sprayer (PZ8897, Unit 4626)

2008 John Deere 4930 Sprayer (PZ8897, Unit 4626), John Deere diesel engine, hydrostatic transmission, air conditioning, heat, Am/Fm CD stereo, 1200 gallon stainless steel liquid system, 90' boom, foam marker, poly foam marker tank, Firestone Radial 9100 380/105R50 tires, John Deere GreenStar 3 monitor, StarFire iTC globe, shows 6071 hours. Notes: Item Location: Geneseo, IL 61254 Equipment Sold "AS IS, WHERE IS": All equipment/property is sold "AS IS, WHERE IS" with no warranty or guarantees, expressed or implied, No operational assessments have been made by DPA Auctions on this item, it has been photographed ONLY.



---

### #97 - 1994 Ford L7000 Spreader Truck (PZ8915)

1994 Ford L7000 Spreader Truck (PZ8915), diesel engine, 5 speed transmission, 2 speed rear end, heat, Am/Fm CD stereo, single axle, Doyle lime spreader box, twin spinner, all hydraulic, 11R22.5 front tires, 10.00R20 rear tires, shows 156,035 miles. Notes: Transmission issues. Truck was working when parked. Weak batteries. Please contact seller for more information. PLEASE ALLOW AT LEAST 90 DAYS FOR TITLE TRANSFER. Item Location: Macomb, IL 61455 Equipment Sold "AS IS, WHERE IS": All equipment/property is sold "AS IS, WHERE IS" with no warranty or guarantees, expressed or implied, No operational assessments have been made by DPA Auctions on this item, it has been photographed ONLY.



---

### #98 - Duraclass Dump Body (PZ8924)

Duraclass Dump Body (PZ8924), Duraclass model HPT-316 18YD16 steel dump box, Roll-Rite TarpMaster electric roll over tarp. Notes: Item Location: Macomb, IL 61455 Equipment Sold "AS IS, WHERE IS": All equipment/property is sold "AS IS, WHERE IS" with no warranty or guarantees, expressed or implied, No operational assessments have been made by DPA Auctions on this item, it has been photographed ONLY.



---

### #99 - Ford 4500 Loader/Backhoe Tractor (PZ8911)

Ford 4500 Loader/Backhoe Tractor (PZ8911), Ford 4500 Loader/Backhoe, gas engine, 6 speed transmission, backhoe bucket, forks, 7.50-16LT front tires, 16.9-24 rear tires, shows 2019 hours. Notes: Transmission is locked up. Ran when parked it. Item Location: Macomb, IL 61455 Equipment Sold "AS IS, WHERE IS": All equipment/property is sold "AS IS, WHERE IS" with no warranty or guarantees, expressed or implied, No operational assessments have been made by DPA Auctions on this item, it has been photographed ONLY.



### #100 - Case W11 Loader (PZ8908)

Case W11 Loader (PZ8908), diesel engine, shuttle shift transmission, cab, lights, bucket, 15-19.5 tires. Notes: Item Location: Adair, IL 61411 Equipment Sold "AS IS, WHERE IS": All equipment/property is sold "AS IS, WHERE IS" with no warranty or guarantees, expressed or implied, No operational assessments have been made by DPA Auctions on this item, it has been photographed ONLY.



### #101 - Flotation Tires (PZ8904)

Flotation Tires (PZ8904), 2 - 21.5L-16.1 flotation tires, rims. Notes: Item Location: Lewistown, IL 61542 Equipment Sold "AS IS, WHERE IS": All equipment/property is sold "AS IS, WHERE IS" with no warranty or guarantees, expressed or implied, No operational assessments have been made by DPA Auctions on this item, it has been photographed ONLY.



### #102 - Flotation Tires (PZ8905)

Flotation Tires (PZ8905), 2 - 21.5L-16.1 flotation tires, rims. Notes: Item Location: Lewistown, IL 61542 Equipment Sold "AS IS, WHERE IS": All equipment/property is sold "AS IS, WHERE IS" with no warranty or guarantees, expressed or implied, No operational assessments have been made by DPA Auctions on this item, it has been photographed ONLY.



### #103 - Dunlop Tires (PZ8916)

Dunlop Tires (PZ8916), 2 - Dunlop 405/70R20 tires. Notes: Item Location: Macomb, IL 61455 Equipment Sold "AS IS, WHERE IS": All equipment/property is sold "AS IS, WHERE IS" with no warranty or guarantees, expressed or implied, No operational assessments have been made by DPA Auctions on this item, it has been photographed ONLY.



### #104 - 2011 RoGator 1194 Sprayer (PZ8906)

2011 RoGator 1194 Sprayer (PZ8906), diesel engine, hydrostatic transmission, air conditioning, heat, Am/Fm CD stereo, 1100 gallon stainless steel liquid system, 100' boom, foam marker, stainless steel foam marker tank, top poly rinse tank, 3 - Good Year Ultra Sprayer 380/90R46 tires, 1 - Alliance 380/90R46 tires, Raven monitor, lightbar, shows 1822 hours. Notes: Item Location: Lewistown, IL 61542 Equipment Sold "AS IS, WHERE IS": All equipment/property is sold "AS IS, WHERE IS" with no warranty or guarantees, expressed or implied, No operational assessments have been made by DPA Auctions on this item, it has been photographed ONLY.



### #105 - 1997 Ford Louisville Dry Floater (PZ8925)

1997 Ford Louisville Dry Floater (PZ8925), Cummins 5.9L diesel engine, 5 speed transmission, 2 speed rear end, heat, Am/Fm radio, single axle, Doyle lime spreader box, twin spinner, all hydraulic, tarp, 385/65R22.5 front tires, 10.00R20 rear tires, Raven SCS660 monitor, shows 150,304 miles. Notes: PLEASE ALLOW AT LEAST 90 DAYS FOR TITLE TRANSFER. Item Location: Macomb, IL 61455 Equipment Sold "AS IS, WHERE IS": All equipment/property is sold "AS IS, WHERE IS" with no warranty or guarantees, expressed or implied, No operational assessments have been made by DPA Auctions on this item, it has been photographed ONLY.



### #106 - Flotation Tires (PZ8917)

Flotation Tires (PZ8917), 2 - PrimeX 48x31.00-20 flotation tires, rims. Notes: Item Location: Macomb, IL 61455 Equipment Sold "AS IS, WHERE IS": All equipment/property is sold "AS IS, WHERE IS" with no warranty or guarantees, expressed or implied, No operational assessments have been made by DPA Auctions on this item, it has been photographed ONLY.



### #107 - Flotation Tires (PZ8918)

Flotation Tires (PZ8918), 4 - Good Year 14.9R30 flotation tires, rims. Notes: Item Location: Macomb, IL 61455 Equipment Sold "AS IS, WHERE IS": All equipment/property is sold "AS IS, WHERE IS" with no warranty or guarantees, expressed or implied, No operational assessments have been made by DPA Auctions on this item, it has been photographed ONLY.



### #108 - 2001 Peterbilt 379 Extended Hood Conventional (CP721)

2001 Peterbilt 379 Extended Hood Conventional (CP721), Cat C-15 6NZ 550HP diesel engine, 18 speed transmission, American Class Interior, dual air ride seats, owner operator gauges, cruise control, engine brake, tandem axle, full screw, air ride suspension, dual fuel tanks, dual exhaust pipes, dual air breathers, air ride cab, 48" flat top sleeper, full fenders, mud flaps, air slide 5th wheel, 24.5 tall rubber, winter front, 270" wheel base, shows 934,459 miles. Notes: Item Location: Springfield, NE 68059 Equipment Sold "AS IS, WHERE IS": All equipment/property is sold "AS IS, WHERE IS" with no warranty or guarantees, expressed or implied, No operational assessments have been made by DPA Auctions on this item, it has been photographed ONLY.





### #109 - Flotation Tire (PZ8920)

Flotation Tire (PZ8920), Good Year 48xs31.00-20 flotation tire. Notes: Item Location: Macomb, IL 61455 Equipment Sold "AS IS, WHERE IS": All equipment/property is sold "AS IS, WHERE IS" with no warranty or guarantees, expressed or implied, No operational assessments have been made by DPA Auctions on this item, it has been photographed ONLY.



### #110 - Case W11 Loader (PZ8922)

Case W11 Loader (PZ8922), diesel engine, shuttle shift transmission, cab, lights, bucket, 15-19.5 tires. Notes: Item Location: Macomb, IL 61455 Equipment Sold "AS IS, WHERE IS": All equipment/property is sold "AS IS, WHERE IS" with no warranty or guarantees, expressed or implied, No operational assessments have been made by DPA Auctions on this item, it has been photographed ONLY.



### #111 - Flotation Tire (PZ8921)

Flotation Tire (PZ8921), Good Year 385/85R34 MPT tire, rim. Notes: Item Location: Macomb, IL 61455 Equipment Sold "AS IS, WHERE IS": All equipment/property is sold "AS IS, WHERE IS" with no warranty or guarantees, expressed or implied, No operational assessments have been made by DPA Auctions on this item, it has been photographed ONLY.



### #112 - 1998 RoGator 554 Sprayer (PZ8919)

1998 RoGator 554 Sprayer (PZ8919), Cummins diesel engine, hydrostatic transmission, air conditioning, heat, Am/Fm cassette radio, 500 gallon stainless steel liquid system, 80' boom, foam marker, stainless steel foam marker tank, poly rinse tank, stainless steel chemical inductor, Good Year Dyna Torque Radial 385/85R34 MPT tires, Raven SCS660 monitor, Raven lightbar, shows 3375 hours. Notes: Item Location: Macomb, IL 61455 Equipment Sold "AS IS, WHERE IS": All equipment/property is sold "AS IS, WHERE IS" with no warranty or guarantees, expressed or implied, No operational assessments have been made by DPA Auctions on this item, it has been photographed ONLY.



### #113 - Continental Flotation Tires (PZ8895)

Continental Flotation Tires (PZ8895), 4 - Continental Contract AC65 650/65R38 flotation tires, rims. Notes: Item Location: Fenton, IL 61251 Equipment Sold "AS IS, WHERE IS": All equipment/property is sold "AS IS, WHERE IS" with no warranty or guarantees, expressed or implied, No operational assessments have been made by DPA Auctions on this item, it has been photographed ONLY.



### #114 - Tires/Axles (PZ8927)

Tires/Axles (PZ8927), 18.4-16A tires, axles. Notes: Item Location: Macomb, IL 61455 Equipment Sold "AS IS, WHERE IS": All equipment/property is sold "AS IS, WHERE IS" with no warranty or guarantees, expressed or implied, No operational assessments have been made by DPA Auctions on this item, it has been photographed ONLY.



### #115 - Flotation Tires (PZ8928)

Flotation Tires (PZ8928), 2 - Firestone 1050/50R25 flotation tires. Notes: Item Location: Macomb, IL 61455 Equipment Sold "AS IS, WHERE IS": All equipment/property is sold "AS IS, WHERE IS" with no warranty or guarantees, expressed or implied, No operational assessments have been made by DPA Auctions on this item, it has been photographed ONLY.



### #116 - Tires (PZ8929)

Tires (PZ8929), 4 - Good Year 385/65R22.5 tires, rims. Notes: Item Location: Macomb, IL 61455 Equipment Sold "AS IS, WHERE IS": All equipment/property is sold "AS IS, WHERE IS" with no warranty or guarantees, expressed or implied, No operational assessments have been made by DPA Auctions on this item, it has been photographed ONLY.



### #117 - Flotation Tires (PZ8930)

Flotation Tires (PZ8930), 2 - PrimeX 48x31.00-20 flotation tires, rims. Notes: Item Location: Macomb, IL 61455 Equipment Sold "AS IS, WHERE IS": All equipment/property is sold "AS IS, WHERE IS" with no warranty or guarantees, expressed or implied, No operational assessments have been made by DPA Auctions on this item, it has been photographed ONLY.



### #118 - Flotation Tires (PZ8931)

Flotation Tires (PZ8931), 2 - PrimeX 48x31.00-20 flotation tires, rims. Notes: Item Location: Macomb, IL 61455 Equipment Sold "AS IS, WHERE IS": All equipment/property is sold "AS IS, WHERE IS" with no warranty or guarantees, expressed or implied, No operational assessments have been made by DPA Auctions on this item, it has been photographed ONLY.



---

### #119 - Flotation Tires (PZ8932)

Flotation Tires (PZ8932), 2 - Alliance 48x31.00-20 flotation tires, rims. Notes: Item Location: Macomb, IL 61455 Equipment Sold "AS IS, WHERE IS": All equipment/property is sold "AS IS, WHERE IS" with no warranty or guarantees, expressed or implied, No operational assessments have been made by DPA Auctions on this item, it has been photographed ONLY.



---

### #120 - 2014 RoGator 1100 Sprayer (PZ8962)

2014 RoGator 1100 Sprayer (PZ8962), Sisu diesel engine, hydrostatic transmission, air conditioning, heat, Am/Fm CD stereo, leather seat, 1100 gallon stainless steel liquid system, 100' boom, foam marker, poly chemical inductor, top poly rinse tank, Good Year Ultra Sprayer 380/90R46 tires, Raven Viper Pro monitor, lightbar, shows 2551 hours. Notes: Item Location: Keenes, IL 62851 Equipment Sold "AS IS, WHERE IS": All equipment/property is sold "AS IS, WHERE IS" with no warranty or guarantees, expressed or implied, No operational assessments have been made by DPA Auctions on this item, it has been photographed ONLY.



---

### #121 - Tires (PZ8933)

Tires (PZ8933), 1 - Good Year 10.00R20 tire, 1 - Sumitomo 10.00R20, other tire. Notes: Item Location: Macomb, IL 61455 Equipment Sold "AS IS, WHERE IS": All equipment/property is sold "AS IS, WHERE IS" with no warranty or guarantees, expressed or implied, No operational assessments have been made by DPA Auctions on this item, it has been photographed ONLY.



---

### #122 - Tires (PZ8934)

Tires (PZ8934), 4 - 12-16.SLT tires, rims. Notes: Item Location: Macomb, IL 61455 Equipment Sold "AS IS, WHERE IS": All equipment/property is sold "AS IS, WHERE IS" with no warranty or guarantees, expressed or implied, No operational assessments have been made by DPA Auctions on this item, it has been photographed ONLY.



---

### #123 - Tires (PZ8935)

Tires (PZ8935), 1 - 12.5L-15 flotation tire & rim, 2 - Good Year 9.5-16 tires, rims. Notes: Item Location: Macomb, IL 61455 Equipment Sold "AS IS, WHERE IS": All equipment/property is sold "AS IS, WHERE IS" with no warranty or guarantees, expressed or implied, No operational assessments have been made by DPA Auctions on this item, it has been photographed ONLY.



---

### #124 - Tires (PZ8936)

Tires (PZ8936), 2 - Roadlux 11R22.5 tires, rims, 2 - rims. Notes: Item Location: Macomb, IL 61455 Equipment Sold "AS IS, WHERE IS": All equipment/property is sold "AS IS, WHERE IS" with no warranty or guarantees, expressed or implied, No operational assessments have been made by DPA Auctions on this item, it has been photographed ONLY.



---

### #125 - Tires (PZ8937)

Tires (PZ8937), 4 - Bridgestone 295/75R22.5 tires. Notes: Item Location: Macomb, IL 61455 Equipment Sold "AS IS, WHERE IS": All equipment/property is sold "AS IS, WHERE IS" with no warranty or guarantees, expressed or implied, No operational assessments have been made by DPA Auctions on this item, it has been photographed ONLY.



---

### #126 - Flotation Tire (PZ8938)

Flotation Tire (PZ8938), 1 - Firestone 48x31.00-20 tire & rim, 1 - Dunlop 11R22.5 tire. Notes: Item Location: Macomb, IL 61455 Equipment Sold "AS IS, WHERE IS": All equipment/property is sold "AS IS, WHERE IS" with no warranty or guarantees, expressed or implied, No operational assessments have been made by DPA Auctions on this item, it has been photographed ONLY.



---

### #127 - Flotation Tires (PZ8939)

Flotation Tires (PZ8939), 2 - Firestone 23.1-26 flotation tires, rims. Notes: Item Location: Macomb, IL 61455 Equipment Sold "AS IS, WHERE IS": All equipment/property is sold "AS IS, WHERE IS" with no warranty or guarantees, expressed or implied, No operational assessments have been made by DPA Auctions on this item, it has been photographed ONLY.



---

### #128 - Flotation Tires (PZ8940)

Flotation Tires (PZ8940), 2 - Firestone 23.1-26 flotation tires, rims. Notes: Item Location: Macomb, IL 61455 Equipment Sold "AS IS, WHERE IS": All equipment/property is sold "AS IS, WHERE IS" with no warranty or guarantees, expressed or implied, No operational assessments have been made by DPA Auctions on this item, it has been photographed ONLY.



---

### #129 - 10,000 Bushel Grain Bin (CP722)

10,000 bushel Chief Grain Bin (CP722), built in 2005, 21' diameter 10 rings high, drying floor, ladder inside & out, roof vents, loadout auger, floor sweep. This bin will be dismantled by seller, should be down by April 30, 2018. Will be stored inside until pickup by buyer. Notes: Buyer DOES NOT get the drying fan, incline augers, North side auger or electrical panels, please contact seller for more details. This bin will already be dismantled by seller and on the ground ready for pickup. Grain bin will be taken down by April 30, 2018. Item Location: Springfield, NE 68059 Equipment Sold "AS IS, WHERE IS": All equipment/property is sold "AS IS, WHERE IS" with no warranty or guarantees, expressed or implied, No operational assessments have been made by DPA Auctions on this item, it has been photographed ONLY.



---

### #130 - Tandem Axle Trailer (PZ8914)

Tandem Axle Trailer (PZ8914), Tandem axle trailer, 12' wood deck, 4' ramps, winch, 7.00-15LT tires. Notes: NO TITLE. Item Location: Macomb, IL 61455 Equipment Sold "AS IS, WHERE IS": All equipment/property is sold "AS IS, WHERE IS" with no warranty or guarantees, expressed or implied, No operational assessments have been made by DPA Auctions on this item, it has been photographed ONLY.



---

### #131 - Triple Axle Trailer (PZ8926)

Triple Axle Trailer (PZ8926), Triple axle trailer, 15' wood deck, 3' beaver tail, 3' ramps, 7.00-15 tires. Notes: NO TITLE. Item Location: Macomb, IL 61455 Equipment Sold "AS IS, WHERE IS": All equipment/property is sold "AS IS, WHERE IS" with no warranty or guarantees, expressed or implied, No operational assessments have been made by DPA Auctions on this item, it has been photographed ONLY.



---

### #132 - 1998 IHC Silver Wheels 2554 Combo Floater (PZ8944, Unit 59592)

1998 IHC Silver Wheels 2554 Combo Floater (PZ8944, Unit 59592), 430 diesel engine, Allison automatic transmission, air conditioning, heat, Am/Fm radio, New Leader L3020 G4 stainless steel dry spreader box, twin spinner, all hydraulic, 1800 gallon stainless steel liquid system, approx. 70' boom, foam marker, stainless steel chemical inductor, 48x31.00-20 front tires, Firestone & PrimeX 66x43.00-25 rear tires, Raven monitor, shows 4525 hours, 50,731 miles. Notes: Running gear NOT included. Item Location: Paxton, IL 60957 Equipment Sold "AS IS, WHERE IS": All equipment/property is sold "AS IS, WHERE IS" with no warranty or guarantees, expressed or implied, No operational assessments have been made by DPA Auctions on this item, it has been photographed ONLY.



---

### #133 - Chandler Dry Tender Box (PZ8945)

Chandler Dry Tender Box (PZ8945), Chandler 8 ton stainless steel dry tender box, rear discharge auger, roll over tarp. Notes: Running gear NOT included. Item Location: Paxton, IL 60957 Equipment Sold "AS IS, WHERE IS": All equipment/property is sold "AS IS, WHERE IS" with no warranty or guarantees, expressed or implied, No operational assessments have been made by DPA Auctions on this item, it has been photographed ONLY.



---

### #134 - Chandler Dry Tender Box (PZ8946)

Chandler Dry Tender Box (PZ8946), Chandler 16 ton stainless steel dry tender box, side discharge auger, roll over tarp. Notes: Running gear NOT included. Item Location: Paxton, IL 60957 Equipment Sold "AS IS, WHERE IS": All equipment/property is sold "AS IS, WHERE IS" with no warranty or guarantees, expressed or implied, No operational assessments have been made by DPA Auctions on this item, it has been photographed ONLY.



---

### #135 - Blu Jet AT5000 Tool Bar (PZ8859, Unit 135)

Blu Jet AT5000 Tool Bar (PZ8859, Unit 135), Blu Jet AT5000 19 knife pull type tool bar, coulters, double disc sealers, Double Raven super cooler, hydraulic wings, 385/65R22.5 tires, 12.4-38 tires, rear hitch. Notes: Item Location: Wilton, IA 52778 Equipment Sold "AS IS, WHERE IS": All equipment/property is sold "AS IS, WHERE IS" with no warranty or guarantees, expressed or implied, No operational assessments have been made by DPA Auctions on this item, it has been photographed ONLY.



---

### #136 - Blu Jet Tool Bar (PZ8860, Unit 129)

Blu Jet Tool Bar (PZ8860, Unit 129), Blu Jet 13 knife pull type tool bar, coulters, GDI 200 ground driven pump, hydraulic wings, walking tandems, 11L-15 flotation tires, rear hitch. Notes: Item Location: Eldridge, IA 52748 Equipment Sold "AS IS, WHERE IS": All equipment/property is sold "AS IS, WHERE IS" with no warranty or guarantees, expressed or implied, No operational assessments have been made by DPA Auctions on this item, it has been photographed ONLY.



---

### #137 - Blu Jet Tool Bar (PZ8861, Unit 130)

Blu Jet Tool Bar (PZ8861, Unit 130), Blu Jet 11 knife pull type tool bar, coulters, GDI 200 ground driven pump, hydraulic wings, walking tandems, 11L-15 flotation tires, rear hitch. Notes: Item Location: Eldridge, IA 52748 Equipment Sold "AS IS, WHERE IS": All equipment/property is sold "AS IS, WHERE IS" with no warranty or guarantees, expressed or implied, No operational assessments have been made by DPA Auctions on this item, it has been photographed ONLY.



---

### #138 - Blu Jet Tool Bar (PZ8876, Unit M3)

Blu Jet Tool Bar (PZ8876, Unit M3), Blu Jet 13 knife pull type tool bar, double disc sealers, GDI 200 ground driven pump, hydraulic wings, 11L-15 flotation tires, rear hitch. Notes: Item Location: Stanwood, IA 52337 Equipment Sold "AS IS, WHERE IS": All equipment/property is sold "AS IS, WHERE IS" with no warranty or guarantees, expressed or implied, No operational assessments have been made by DPA Auctions on this item, it has been photographed ONLY.



---

### #139 - Ray Man Floater Loader (PZ8877)

Ray Man Floater Loader (PZ8877), Ray Man model 24RM2810G floater loader, Kohler Command Pro 27 gas engine, all hydraulic, ST255/75R15 tires. Notes: Item Location: Stanwood, IA 52337 Equipment Sold "AS IS, WHERE IS": All equipment/property is sold "AS IS, WHERE IS" with no warranty or guarantees, expressed or implied, No operational assessments have been made by DPA Auctions on this item, it has been photographed ONLY.



---

### #140 - 1995 Unverferth Weigh Wagon (PZ8878)

1995 Unverferth Weigh Wagon (PZ8878), 1995 Unverferth model 150 weigh wagon, side discharge auger, Onan gas engine, J-Star EZ 150 digital scale, roll over tarp, 9.50-16.5 tires. Notes: Item Location: Stanwood, IA 52337 Equipment Sold "AS IS, WHERE IS": All equipment/property is sold "AS IS, WHERE IS" with no warranty or guarantees, expressed or implied, No operational assessments have been made by DPA Auctions on this item, it has been photographed ONLY.



---

### #141 - 2008 New Leader Dry Spreader Box (PZ8900)

2008 New Leader Dry Spreader Box (PZ8900), 2008 New Leader L3030 G4 - 11 Multiplier stainless steel dry spreader box, twin spinner, all hydraulic. Notes: Item Location: Annawan, IL 61234 Equipment Sold "AS IS, WHERE IS": All equipment/property is sold "AS IS, WHERE IS" with no warranty or guarantees, expressed or implied, No operational assessments have been made by DPA Auctions on this item, it has been photographed ONLY.



---

### #142 - 1990 Chevrolet Kodiak Cab/Chassis Truck (PZ8899, Unit 4209)

1990 Chevrolet Kodiak Cab/Chassis Truck (PZ8899, Unit 4209), Cat 3116 diesel engine, 5 speed transmission, 2 speed rear end, heat, Am/Fm cassette radio, single axle, 11R22.5 tires, shows 342,616 miles. Notes: Item Location: Annawan, IL 61234 Equipment Sold "AS IS, WHERE IS": All equipment/property is sold "AS IS, WHERE IS" with no warranty or guarantees, expressed or implied, No operational assessments have been made by DPA Auctions on this item, it has been photographed ONLY.



---

### #143 - Back End Gate (PZ8901)

Back End Gate (PZ8901), New Leader stainless steel end gate for dry box. Notes: Item Location: Galva, IL 61434 Equipment Sold "AS IS, WHERE IS": All equipment/property is sold "AS IS, WHERE IS" with no warranty or guarantees, expressed or implied, No operational assessments have been made by DPA Auctions on this item, it has been photographed ONLY.



---

### #144 - Back End Gate (PZ8902)

Back End Gate (PZ8902), New Leader L3220 G4 stainless steel end gate for dry box. Notes: Item Location: Galva, IL 61434 Equipment Sold "AS IS, WHERE IS": All equipment/property is sold "AS IS, WHERE IS" with no warranty or guarantees, expressed or implied, No operational assessments have been made by DPA Auctions on this item, it has been photographed ONLY.



---

### #145 - Back End Gate (PZ8903)

Back End Gate (PZ8903), New Leader L3220 G4 stainless steel end gate for dry box. Notes: Item Location: Galva, IL 61434 Equipment Sold "AS IS, WHERE IS": All equipment/property is sold "AS IS, WHERE IS" with no warranty or guarantees, expressed or implied, No operational assessments have been made by DPA Auctions on this item, it has been photographed ONLY.





---

### #146 - 2013 Ag Chem Dry Air Flow System (PZ8879)

2013 Ag Chem Dry Air Flow System (PZ8879), 2013 Ag Chem AirMax Precision 2 dry air flow system, 70' stainless steel boom, electric roll over tarp. Notes: Running gear NOT included. Item Location: Lost Nation, IA 52254 Equipment Sold "AS IS, WHERE IS": All equipment/property is sold "AS IS, WHERE IS" with no warranty or guarantees, expressed or implied, No operational assessments have been made by DPA Auctions on this item, it has been photographed ONLY.



---

### #147 - Ray Man Floater Loader (PZ8880)

Ray Man Floater Loader (PZ8880), Ray Man model RM2810G floater loader, Kohler gas engine, ST225/75R15 tires. Notes: Item Location: Lost Nation, IA 52254 Equipment Sold "AS IS, WHERE IS": All equipment/property is sold "AS IS, WHERE IS" with no warranty or guarantees, expressed or implied, No operational assessments have been made by DPA Auctions on this item, it has been photographed ONLY.



---

### #148 - Wheel Assist (PZ8881)

Wheel Assist (PZ8881), Michelin 215/75R17.5 wheel assist tires, hydraulic. Notes: Item Location: Lost Nation, IA 52254 Equipment Sold "AS IS, WHERE IS": All equipment/property is sold "AS IS, WHERE IS" with no warranty or guarantees, expressed or implied, No operational assessments have been made by DPA Auctions on this item, it has been photographed ONLY.



---

### #150 - 2000 Chevy 1500 (DR8172, Unit C26)

2000 Chevy 1500 (DR8172, Unit C26), 5.3 liter gas engine, automatic transmission, 4X4, quad cab, rear ag bumper, AM/FM CD radio, air conditioning, cruise control. Notes: Item Location: Cokato, MN 55321 Equipment Sold "AS IS, WHERE IS": All equipment/property is sold "AS IS, WHERE IS" with no warranty or guarantees, expressed or implied, No operational assessments have been made by DPA Auctions on this item, it has been photographed ONLY.



---

### #151 - 1994 International 2554 Floater Truck (AL279)

1994 International 2554 Floater Truck (AL279), DT466 Motor, Allison 4 speed automatic transmission with a separate high low splitter box, less than 300 hours on bottom end rebuild, shifts smoothly, air ride drivers seat with a raven viper controller, 1996 new leader steel bed, solid bed with some rust spots, new hoses on bed, needs a belt over chain in bed, shows 10,918 hours. Notes: NO TITLE. Item Location: Jacob, IL 62950 Equipment Sold "AS IS, WHERE IS": All equipment/property is sold "AS IS, WHERE IS" with no warranty or guarantees, expressed or implied, No operational assessments have been made by DPA Auctions on this item, it has been photographed ONLY.



---

### #152 - 2001 Crown SP-3020 Forklift (PD703)

2001 Crown SP-3020 Forklift (PD703), 3305 hours, triple mast, 108"-240", 42 inch forks, good drive tires, good steer tires, very straight and clean sheet metal, unit engine runs & operates and all functions work as they should, 24 volt battery operates for an hour. Notes: Item Location: Saint Louis, MO 63132 Equipment Sold "AS IS, WHERE IS": All equipment/property is sold "AS IS, WHERE IS" with no warranty or guarantees, expressed or implied, No operational assessments have been made by DPA Auctions on this item, it has been photographed ONLY.



---

### #153 - Comefri Centrifugal Blower Fan (KMK480)

Comefri Centrifugal Blower Fan (KMK480), Comefri ATZAF 40-40 T-2, centrifugal blower fan, 75 hp. Baldor Super E electric motor, 3 phase, like new, 1350 rpm fan, over all dimensions 98" x 86" x 70". Notes: Seller will assist in loading or take to Zip Code 66608 for Shipping. Item Location: Topeka, KS 66546 Equipment Sold "AS IS, WHERE IS": All equipment/property is sold "AS IS, WHERE IS" with no warranty or guarantees, expressed or implied, No operational assessments have been made by DPA Auctions on this item, it has been photographed ONLY.



---

### #154 - OprRx 3 Sensor & Master Module/ Cabling (PD656)

OprRx 3 Sensor & Master Module/ Cabling (PD656), installed on machine in July and used for 3 weeks for nitrogen (about 400 acres), taken off and cleaned and sitting since, will work with Ag Leader insight, integra and in command 1200 displays for use with rate controller or as a stand alone nitrogen sensor system, if used with a rate controller it has the capability to variable rate on the go without entering in a prescription, if using a standalone system the data can be made into a variable rate map putting the nitrogen where it needs to go, includes mounting brackets for 100/90 foot booms. Notes: System lists for \$13,655. Item Location: Aurora, IL 60502 Equipment Sold "AS IS, WHERE IS": All equipment/property is sold "AS IS, WHERE IS" with no warranty or guarantees, expressed or implied, No operational assessments have been made by DPA Auctions on this item, it has been photographed ONLY.



---

### #155 - Dry Fertilizer Spreader Parts (NP6307)

Dry Fertilizer Spreader Parts (NP6307), PTO shafts, bearings, pulleys. Notes: Item Location: Melvin, IL 60952 Equipment Sold "AS IS, WHERE IS": All equipment/property is sold "AS IS, WHERE IS" with no warranty or guarantees, expressed or implied, No operational assessments have been made by DPA Auctions on this item, it has been photographed ONLY.



---

### #156 - Yale 2 Ton Chain Hoist (NP6306)

Yale 2 Ton Chain Hoist (NP6306). Notes: Item Location: Melvin, IL 60952 Equipment Sold "AS IS, WHERE IS": All equipment/property is sold "AS IS, WHERE IS" with no warranty or guarantees, expressed or implied, No operational assessments have been made by DPA Auctions on this item, it has been photographed ONLY.



---

### #157 - Pressure Washer (NP6309)

Pressure Washer (NP6309), hydraulic driven, parts only, taken off Terra Gator. Notes: Item Location: Melvin, IL 60952 Equipment Sold "AS IS, WHERE IS": All equipment/property is sold "AS IS, WHERE IS" with no warranty or guarantees, expressed or implied, No operational assessments have been made by DPA Auctions on this item, it has been photographed ONLY.



---

### #158 - 1979 Kingsleigh NH3 Nurse Tank (PZ8974)

1979 Kingsleigh NH3 Nurse Tank (PZ8974), 1979 Kingsleigh NH3 nurse tank, 3,500 gallon capacity, extreme front fill, water tank, P&H heavy duty 6 wheel gear, spring load tongue, 445/50R22.5 tires, data plate. Notes: Recently sandblasted and re-painted. Item Location: Kevil, KY 42053 Equipment Sold "AS IS, WHERE IS": All equipment/property is sold "AS IS, WHERE IS" with no warranty or guarantees, expressed or implied, No operational assessments have been made by DPA Auctions on this item, it has been photographed ONLY.



---

### #159 - 1987 Kingsleigh NH3 Nurse Tank (PZ8975)

1987 Kingsleigh NH3 Nurse Tank (PZ8975), 1987 Kingsleigh NH3 nurse tank, 3,500 gallon capacity, extreme front fill, water tank, P&H heavy duty 6 wheel gear, spring load tongue, 445/50R22.5 tires, data plate. Notes: Recently sandblasted and re-painted. Item Location: Kevil, KY 42053 Equipment Sold "AS IS, WHERE IS": All equipment/property is sold "AS IS, WHERE IS" with no warranty or guarantees, expressed or implied, No operational assessments have been made by DPA Auctions on this item, it has been photographed ONLY.



---

### #160 - 1988 Kingsleigh NH3 Nurse Tank (PZ8976)

1988 Kingsleigh NH3 Nurse Tank (PZ8976), 1988 Kingsleigh NH3 nurse tank, 3,500 gallon capacity, extreme front fill, water tank, P&H heavy duty 6 wheel gear, spring load tongue, 445/50R22.5 tires, data plate. Notes: Recently sandblasted and re-painted. Item Location: Kevil, KY 42053 Equipment Sold "AS IS, WHERE IS": All equipment/property is sold "AS IS, WHERE IS" with no warranty or guarantees, expressed or implied, No operational assessments have been made by DPA Auctions on this item, it has been photographed ONLY.



---

### #161 - Michelin Floatation Tires (PZ8898)

Michelin Floatation Tires (PZ8898), 4 - Michelin XM 28 620/70R46 floatation tires, rims. Notes: Item Location: Geneseo, IL 61254 Equipment Sold "AS IS, WHERE IS": All equipment/property is sold "AS IS, WHERE IS" with no warranty or guarantees, expressed or implied, No operational assessments have been made by DPA Auctions on this item, it has been photographed ONLY.



---

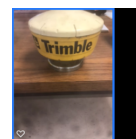
### #162 - Fischbein Bag Closer (PZ8947)

Fischbein Bag Closer (PZ8947), Fischbein bag closer, 7'10" tall, 12" wide belt, 36" overall width, 9' long. Notes: Item Location: Elwood, IN 46036 Equipment Sold "AS IS, WHERE IS": All equipment/property is sold "AS IS, WHERE IS" with no warranty or guarantees, expressed or implied, No operational assessments have been made by DPA Auctions on this item, it has been photographed ONLY.



### #163 - Trimble Globe/Receiver/AgLeader Monitor (PZ8949)

Trimble Globe/Receiver/AgLeader Monitor (PZ8949), Trimble GPS globe, Trimble GPS receiver, AgLeader Insight monitor, all unlocks are open on this: guidance, planter row control, yield monitor, etc. Notes: Item Location: Gibson City, IL 60936 Equipment Sold "AS IS, WHERE IS": All equipment/property is sold "AS IS, WHERE IS" with no warranty or guarantees, expressed or implied, No operational assessments have been made by DPA Auctions on this item, it has been photographed ONLY.



### #164 - 2014 KSI 161075 Belt Conveyor (TR4625)

2014 KSI 161075 Belt Conveyor (TR4625), 72' length, 3 phase motor, rebuilt. Notes: Item Location: Hastings, NE 68901 Equipment Sold "AS IS, WHERE IS": All equipment/property is sold "AS IS, WHERE IS" with no warranty or guarantees, expressed or implied, No operational assessments have been made by DPA Auctions on this item, it has been photographed ONLY.



### #165 - 1983 IHC Cab Over (NJP1209)

1983 IHC Cab Over (NJP1209), 300 Cummins diesel, 9 speed RT transmission, AM/FM, Heat/AC, headache rack, tandem axle, air brakes, 11R/22.5 tires, 5th wheel, 457,619 miles. Notes: Item Location: Bertrand, NE 68927 Equipment Sold "AS IS, WHERE IS": All equipment/property is sold "AS IS, WHERE IS" with no warranty or guarantees, expressed or implied, No operational assessments have been made by DPA Auctions on this item, it has been photographed ONLY.



### #166 - 2000 KW T2000 (NJP1240)

2000 KW T2000 (NJP1240), 12.7 L Detroit diesel engine, 13 speed transmission, New alternator, radiator, AC Condenser, new batteries, and back tires, tandem axle, 295 75R 22.5 tires, heat/AC, AM/FM CD player, air brakes, air ride, 5th wheel, double bunk sleeper, 546,247 miles, 3.55 gear ratio. Notes: Item Location: Bertrand, NE 68927 Equipment Sold "AS IS, WHERE IS": All equipment/property is sold "AS IS, WHERE IS" with no warranty or guarantees, expressed or implied, No operational assessments have been made by DPA Auctions on this item, it has been photographed ONLY.



### #167 - 1998 Terra Gator 8103 (ED478)

1998 Terra Gator 8103 (ED478), John Deere Series #RG6081H030998, Terra Shift transmission, Heat, A/C, AM/FM radio, New Leader G-4 Stainless Bed SN: 126384, bed is approximately 7 years old, DP.6 Plus monitor, 66X43X24 tire size, front tire is 25%, back tires are over 50%, shows 33,636 miles, shows 6230 hours. Notes: Item Location: Tuscola, IL 61953 Equipment Sold "AS IS, WHERE IS": All equipment/property is sold "AS IS, WHERE IS" with no warranty or guarantees, expressed or implied, No operational assessments have been made by DPA Auctions on this item, it has been photographed ONLY.



### #168 - 2016 Blu-Jet AT4020 24 Row All Terrain Liquid Side Dress Injection Toolbar Applicator

2016 Blu-Jet AT4020 24 Row All Terrain Liquid Side Dress Injection Toolbar Applicator, 18'10" Length, 62.5' Width, 13'3" Height, UNUSED, 25 Coulters On 30" Spacing's With Jet Stream Injection, 2000 Gallon Product Tank- Cone Bottom With 3" Bottom Fill, Heavy Duty 7 Section Toolbar With Individual Shut Offs, Automatic Hydraulic Gull Wing During Turns, Centrifugal Pump Hydraulic Drive, Super 1200 Coulters With 20" Smooth Blades, On Board ISOBUS Rate Controller: Hydraulic Down Pressure, Fertilizer Application Rate, Depth, Down Pressure, Tank Level, Folding Are All Controlled And Monitored Through The Implement ECU, Connects To ISOBUS Capable Tractors For Varied And Automated Rates Based On Field Maps. Cat IV Pinto Hitch, 380/105 R50 Main Tires, Gage Wheels And Tires On Toolbar, Transport Width 15'-10", Hand Wash Water Tank, Lighting Kit, Manufacturer Owned-Unit Used for Trade Show Floor Model. Notes: Item Location: Philo, IL 61864 Equipment Sold "AS IS, WHERE IS": All equipment/property is sold "AS IS, WHERE IS" with no warranty or guarantees, expressed or implied, No operational assessments have been made by DPA Auctions on this item, it has been photographed ONLY.



### #169 - Ag-Chem Big A Model 2800 Sprayer (TH245)

Ag-Chem Big A Model 2800 Sprayer (TH245), diesel engine, automatic transmission, tires are 10-20%. Notes: Unit runs but not used last year as owner upgraded to a newer sprayer. Item Location: Walker, IA 52352 Equipment Sold "AS IS, WHERE IS": All equipment/property is sold "AS IS, WHERE IS" with no warranty or guarantees, expressed or implied, No operational assessments have been made by DPA Auctions on this item, it has been photographed ONLY.



### #171 - 2001 B&B Sprayer Trailer (TH246)

2001 B&B Sprayer Trailer (TH246), side decks are 20 feet long and have ramps, tandem axle dual wheel, 235/80-16 tires, electric brakes, side rail platforms fold up, center section is useable to transport supplies. Notes: Item Location: Walker, IA 52352 Equipment Sold "AS IS, WHERE IS": All equipment/property is sold "AS IS, WHERE IS" with no warranty or guarantees, expressed or implied, No operational assessments have been made by DPA Auctions on this item, it has been photographed ONLY.



---

### #172 - 15 Ton Chandler Fertilizer Tender Bed (DL223)

15 Ton Chandler Fertilizer Tender Bed (DL223), stainless steel fertilizer tender bed with hydraulic PTO pump. Notes: Item Location: Ethridge, TN 38456 Equipment Sold "AS IS, WHERE IS": All equipment/property is sold "AS IS, WHERE IS" with no warranty or guarantees, expressed or implied, No operational assessments have been made by DPA Auctions on this item, it has been photographed ONLY.



---

### #173 - 1994 4900 International (DL226, Unit 76040)

1994 4900 International (DL226, Unit 76040), DT 466 diesel engine, 6 speed transmission, single axle with air brakes, 8 ton SS fertilizer tender bed, rear hydraulic discharge auger, shows 225526 miles. Notes: Truck was last ran on 2-20-18 hauling fertilizer to spreader truck. PLEASE ALLOW AT LEAST 60 DAYS FOR TITLE TRANSFER. Item Location: Ethridge, TN 38456 Equipment Sold "AS IS, WHERE IS": All equipment/property is sold "AS IS, WHERE IS" with no warranty or guarantees, expressed or implied, No operational assessments have been made by DPA Auctions on this item, it has been photographed ONLY.



---

### #174 - 30' S & A Belt Conveyor (MH262)

30' S & A Belt Conveyor (MH262), 30 foot stainless steel belt conveyor, Honda motor starts and runs good, 24" wide belt in good condition, up to 150 tons per hour, BC 814, new bottom roller and bearing this past winter. Notes: Item Location: Gaylord, KS 67638 Equipment Sold "AS IS, WHERE IS": All equipment/property is sold "AS IS, WHERE IS" with no warranty or guarantees, expressed or implied, No operational assessments have been made by DPA Auctions on this item, it has been photographed ONLY.



---

### #175 - Grasshopper 718K Mower (AL285)

Grasshopper 718K Mower (AL285), 61" deck and bagger, 18 HP Kohler engine, shows 1255 hours. Notes: Item Location: West Point, NE 68788 Equipment Sold "AS IS, WHERE IS": All equipment/property is sold "AS IS, WHERE IS" with no warranty or guarantees, expressed or implied, No operational assessments have been made by DPA Auctions on this item, it has been photographed ONLY.



---

### #176 - Krause 5500 No Till Drill (TH234)

Krause 5500 No Till Drill (TH234), 20' wide, 10" spacing and rolling basket on rear, unit has 500 acres on openers and bushings, the drill comes with monitor. Notes: Drill has been shedded and is in excellent condition. Item Location: Central City, IA 52214 Equipment Sold "AS IS, WHERE IS": All equipment/property is sold "AS IS, WHERE IS" with no warranty or guarantees, expressed or implied, No operational assessments have been made by DPA Auctions on this item, it has been photographed ONLY.



---

### #177 - 1997 Pacer AT35L Trailer (KMK2090)

1997 Pacer AT35L Trailer (KMK2090), 24T - 8 compartment bulk feed trailer, tandem axle, air ride suspension, 11R22.25 tires, GVWF 65,000lbs. Notes: Item Location: Scribner, NE 68057 Equipment Sold "AS IS, WHERE IS": All equipment/property is sold "AS IS, WHERE IS" with no warranty or guarantees, expressed or implied, No operational assessments have been made by DPA Auctions on this item, it has been photographed ONLY.



---

### #178 - 2004 Wilson Livestock Trailer (KMK2092)

2004 Wilson Livestock Trailer (KMK2092), 52ft, spread axle, air ride suspension, 11R24.5 tires, aluminum livestock trailer, unit# 141 model PSDCL-402, GVWR 75,000lbs. Notes: Item Location: Scribner, NE 68057 Equipment Sold "AS IS, WHERE IS": All equipment/property is sold "AS IS, WHERE IS" with no warranty or guarantees, expressed or implied, No operational assessments have been made by DPA Auctions on this item, it has been photographed ONLY.



---

### #179 - 1979 Great Dane Drop Deck Trailer (KMK2093)

1979 Great Dane Drop Deck Trailer (KMK2093), tandem axle, spring ride suspension, 10.00R15 tires. Notes: Item Location: Scribner, NE 68057 Equipment Sold "AS IS, WHERE IS": All equipment/property is sold "AS IS, WHERE IS" with no warranty or guarantees, expressed or implied, No operational assessments have been made by DPA Auctions on this item, it has been photographed ONLY.





### #180 - 1997 International Tandem (EG472)

1997 International Tandem (EG472), Int DT 466, manual 10 speed, AM/FM radio, heat, unit has a new tarp and nice 18 ton stainless box, tires are 60%, this truck is NOT driveable due to clutch pedal mechanism is rusted and a rusty firewall on the cab, everything else is good and functional, last used in fall of 2017, shows 261,346 miles. Notes: This truck is NOT driveable due to clutch pedal mechanism is rusted and a rusty firewall on the cab. Item Location: Tolono, IL 61880 Equipment Sold "AS IS, WHERE IS": All equipment/property is sold "AS IS, WHERE IS" with no warranty or guarantees, expressed or implied, No operational assessments have been made by DPA Auctions on this item, it has been photographed ONLY.



### #181 - 2009 Chevy 3/4 Ton Extended Cab (ED473)

2009 Chevy 3/4 Ton Extended Cab (ED473), 6 Liter, automatic transmission, AM/FM, CD player, metal body, 90% tread, heat and A/C work, spray on bed liner and tow package, this truck runs and works well, used daily on the lot and for deliveries over the road, shows 240,766 miles. Notes: Item Location: Tolono, IL 61880 Equipment Sold "AS IS, WHERE IS": All equipment/property is sold "AS IS, WHERE IS" with no warranty or guarantees, expressed or implied, No operational assessments have been made by DPA Auctions on this item, it has been photographed ONLY.



### #182 - Miller Liquid Tool Bar (PZ-3738)

Miller Liquid Tool Bar (PZ-3738) Miller model 36' tool bar, 15 (16 row) coulter injection, foam marker attachment, equipped with variable rate nozzles, Titan 7.50-20SL tires, Good Year 7.50-14SL tires. Notes: Item Location: Rockwell City, IA 50579 Equipment Sold "AS IS, WHERE IS": All equipment/property is sold "AS IS, WHERE IS" with no warranty or guarantees, expressed or implied, No operational assessments have been made by DPA Auctions on this item, it has been photographed ONLY.



### #183 - 2014 Titan Gooseneck Trailer (NP6567)

2014 Titan Gooseneck Trailer (NP6567), 24' + 6 WG flatbed, wood deck, spread axle, 10,000 Dexter axles, spare tire, dual jacks, tool box, fold down ramps, Break Away Kit, ST235/80R16 tires, GVWR 20,000lbs, NEVER BEEN PULLED. Notes: Will have CERTIFICATE OF ORIGIN - NO TITLE. Item Location: Centerview, MO 64019 Equipment Sold "AS IS, WHERE IS": All equipment/property is sold "AS IS, WHERE IS" with no warranty or guarantees, expressed or implied, No operational assessments have been made by DPA Auctions on this item, it has been photographed ONLY.



### #184 - 2015 Tube Line TL5500 AX2 Bale Wrapper (NP6568)

2015 Tube Line TL5500 AX2 Bale Wrapper (NP6568), light kit, Honda GX630 20HP gas motor, electric start, high capacity hydraulic pump kit, flotation tires, side mount control board. Notes: Item Location: Centerview, MO 64019 Equipment Sold "AS IS, WHERE IS": All equipment/property is sold "AS IS, WHERE IS" with no warranty or guarantees, expressed or implied, No operational assessments have been made by DPA Auctions on this item, it has been photographed ONLY.



### #185 - Titan West Corral "Buddy" (NP6569)

Titan West Corral Buddy (NP6569), bumper hitch, ST235/80R16 tires, manual fold/unfold. Notes: Item Location: Centerview, MO 64019 Equipment Sold "AS IS, WHERE IS": All equipment/property is sold "AS IS, WHERE IS" with no warranty or guarantees, expressed or implied, No operational assessments have been made by DPA Auctions on this item, it has been photographed ONLY.



### #186 - 2014 Titan Aluminum Livestock Trailer (NP6570)

2014 Titan Aluminum Livestock Trailer (NP6570), 20' long, 7.5' wide, tandem axle, center gate, LED lights, ST235/80R16 tires, Break Away Kit, GVWR 14,000lbs, NEVER BEEN PULLED. Notes: Will have CERTIFICATE OF ORIGIN - NO TITLE. Item Location: La Monte, MO 65337 Equipment Sold "AS IS, WHERE IS": All equipment/property is sold "AS IS, WHERE IS" with no warranty or guarantees, expressed or implied, No operational assessments have been made by DPA Auctions on this item, it has been photographed ONLY.



### #188 - 1979 Butler Dovetail Loader Trailer (NP6572)

1979 Butler Dovetail Loader Trailer (NP6572), Model B2424UE, spread axle, spring suspension, pintle hitch, NEW bridgeplank deck, center jack, fold down ramps, 9-14.5LT tires. Notes: Item Location: Salisbury, MO 65281 Equipment Sold "AS IS, WHERE IS": All equipment/property is sold "AS IS, WHERE IS" with no warranty or guarantees, expressed or implied, No operational assessments have been made by DPA Auctions on this item, it has been photographed ONLY.



### #189 - 1978 Case W20C Articulating Loader (NP6573)

1978 Case W20C Articulating Loader (NP6573), cab, diesel engine, manual trans, 17.5-25 tires, bucket, park brake. Notes: Cracked front windshield, seller used this loader for lime. Item Location: Salisbury, MO 65281 Equipment Sold "AS IS, WHERE IS": All equipment/property is sold "AS IS, WHERE IS" with no warranty or guarantees, expressed or implied, No operational assessments have been made by DPA Auctions on this item, it has been photographed ONLY.



---

### #190 - 2015 Freightliner M2 LP Truck (NP6574, Unit 77275)

2015 Freightliner M2 LP Truck (NP6574, Unit 77275), Cummins diesel engine, Allison automatic transmission, heat, air conditioning, Am/Fm CD radio, single axle, air ride suspension, 2014 Westmor LP Tank, NB #3109, S/N H143109, 3,499 gallon capacity, SHELL MAT'L SA612, HEAD MAT'L SA612, meter, hose reel, 22.5 tires. Notes: This truck has extensive damage and has a SALVAGE TITLE, please contact seller for more details. Item Location: Wausaukee, WI 54177 Equipment Sold "AS IS, WHERE IS": All equipment/property is sold "AS IS, WHERE IS" with no warranty or guarantees, expressed or implied, No operational assessments have been made by DPA Auctions on this item, it has been photographed ONLY.



---

### #192 - 1990 IHC 4900 Dry Tender Truck (PZ8955, Unit 44777)

1990 IHC 4900 Dry Tender Truck (PZ8955, Unit 44777), DT466 diesel engine, 5 speed transmission, heat, Am/Fm radio, single axle, Willmar 10 ton dry tender box, rear discharge auger, all hydraulic, roll over tarp, shows 137,198 miles. Notes: Had to work on the speedometer, works most of the time. Transmission & rear end was replaced in the last 2 year. PLEASE ALLOW AT LEAST 60 DAYS FOR TITLE TRANSFER. Item Location: Onarga, IL 60955 Equipment Sold "AS IS, WHERE IS": All equipment/property is sold "AS IS, WHERE IS" with no warranty or guarantees, expressed or implied, No operational assessments have been made by DPA Auctions on this item, it has been photographed ONLY.



---

### #193 - 1993 Ford Aeromax, (DR8534)

1993 Ford Aeromax, (DR8534), semi float, Cat diesel engine, (non runner) 10 speed transmission, New Leader L3020 G4 hydraulic stainless steel dry spinner box, New Leader controller, 48 X31.00-20 rear tires, shows 4402 hours. Notes: Engine is BAD, has a knock so truck has been updated. Item Location: Stockbridge, MI 49285 Equipment Sold "AS IS, WHERE IS": All equipment/property is sold "AS IS, WHERE IS" with no warranty or guarantees, expressed or implied, No operational assessments have been made by DPA Auctions on this item, it has been photographed ONLY.



---

### #194 - 2009 Houle 7300 Slurry Tank (PZ8956)

2009 Houle 7300 Slurry Tank (PZ8956), 2009 Houle 7300 Slurry Tank, extended hopper, remote grease lines steering, auto brakes, load level indicator, flow control, 1000 RPM PTO, signal and work lights, triple axle, Galaxy 725/65-26 tires, 5 Dietrich injectors. Notes: Item Location: Erie, IL 61250 Equipment Sold "AS IS, WHERE IS": All equipment/property is sold "AS IS, WHERE IS" with no warranty or guarantees, expressed or implied, No operational assessments have been made by DPA Auctions on this item, it has been photographed ONLY.



---

### #195 - NUHN Frac Tank (PZ8957)

NUHN Frac Tank (PZ8957), NUHN 20,000 gallon frac tank, 40'x8'x6', 8" load/unload, combination pump system with remote, 8" fill boom, remote controlled, 1000 RPM small, 425/65R22.5 tires. Notes: Item Location: Erie, IL 61250 Equipment Sold "AS IS, WHERE IS": All equipment/property is sold "AS IS, WHERE IS" with no warranty or guarantees, expressed or implied, No operational assessments have been made by DPA Auctions on this item, it has been photographed ONLY.



---

### #196 - Booster Pump (PZ8958)

Booster Pump (PZ8958), Booster pump, John Deere 275 hp diesel engine, shows 1925 hours, S/N 6466TH-01 142959R6, Cornell pump, 4NHTB. Notes: Item Location: Erie, IL 61250 Equipment Sold "AS IS, WHERE IS": All equipment/property is sold "AS IS, WHERE IS" with no warranty or guarantees, expressed or implied, No operational assessments have been made by DPA Auctions on this item, it has been photographed ONLY.



---

### #197 - 1998 Tyler Titan 4375 (DR8541)

1998 Tyler Titan 4375 (DR8541), Cat diesel engine, Allison automatic transmission, Tyler Flex Air dry air flow system, Tyler Flew controller, Trimble swathing light bar, 500 gallon liquid impregnation tank, hydraulic booms, foam markers, stainless steel foam tank, stainless steel chemical inductor, electric roll tarp, AM/FM CD radio, air conditioning, 54X31.00-26 front tires, 73X44.00-32 rear tires, shows 52,823 miles, 3883 hours. Notes: Roll tarp shaft is broken. Item Location: Burbank, SD 57010 Equipment Sold "AS IS, WHERE IS": All equipment/property is sold "AS IS, WHERE IS" with no warranty or guarantees, expressed or implied, No operational assessments have been made by DPA Auctions on this item, it has been photographed ONLY.



---

### #198 - Blu-Jet Applicator (DR8542)

Blu-Jet Applicator (DR8542), 50' 18K Nh3 tool bar, dual Raven coolers, hydraulic wings, walking tandem axles, walking tandem gauge wheels, front coulters, double disc rear sealers, NO CONTROLLER. Notes: Item Location: Burbank, SD 57010 Equipment Sold "AS IS, WHERE IS": All equipment/property is sold "AS IS, WHERE IS" with no warranty or guarantees, expressed or implied, No operational assessments have been made by DPA Auctions on this item, it has been photographed ONLY.



---

**#199 - Blu-jet Landrunner (DR8543)**

Blu-jet Landrunner (DR8543), 30' X 13K, walking tandem axles, manual gauge wheels, Raven cooler, NO CONTROLLER. Notes: Item Location: Burbank, SD 57010 Equipment Sold "AS IS, WHERE IS": All equipment/property is sold "AS IS, WHERE IS" with no warranty or guarantees, expressed or implied, No operational assessments have been made by DPA Auctions on this item, it has been photographed ONLY.



---

**#200 - Nh3 Nurse Tank (DR8545 Unit 10)**

Nh3 Nurse Tank (DR8545 Unit 10), 1000 gallon Nh3 tank, top front fill, data plate, Pryor style running gear, rear hitch, 12.5-15 tires. Notes: VTP inspection in 2012 with all paperwork. Item Location: Burbank, SD 57010 Equipment Sold "AS IS, WHERE IS": All equipment/property is sold "AS IS, WHERE IS" with no warranty or guarantees, expressed or implied, No operational assessments have been made by DPA Auctions on this item, it has been photographed ONLY.



---

**#201 - Nh3 Nurse Tank (DR8546 Unit 6)**

Nh3 Nurse Tank (DR8546 Unit 6), 1000 gallon Nh3 tank, top front fill, data plate, Pryor style running gear, rear hitch, 12.5-15 tires. Notes: VTP inspection in 2012 with all paperwork. Item Location: Burbank, SD 57010 Equipment Sold "AS IS, WHERE IS": All equipment/property is sold "AS IS, WHERE IS" with no warranty or guarantees, expressed or implied, No operational assessments have been made by DPA Auctions on this item, it has been photographed ONLY.



---

**#202 - Nh3 Nurse Tank (DR8547 Unit 13)**

Nh3 Nurse Tank (DR8547 Unit 13), 1000 gallon Nh3 tank, top front fill, data plate, 5th wheel style running gear, adjustable axles, rear hitch, 12.5-15 tires. Notes: VTP inspection in 2012 with all paperwork. Item Location: Burbank, SD 57010 Equipment Sold "AS IS, WHERE IS": All equipment/property is sold "AS IS, WHERE IS" with no warranty or guarantees, expressed or implied, No operational assessments have been made by DPA Auctions on this item, it has been photographed ONLY.



---

**#203 - Nh3 Nurse Tank (DR8548 Unit 3)**

Nh3 Nurse Tank (DR8548 Unit 3), 1000 gallon Nh3 tank, top front fill, data plate, Pryor style running gear, 12.5-15 tires. Notes: VTP inspection in 2012 with all paperwork. Item Location: Burbank, SD 57010 Equipment Sold "AS IS, WHERE IS": All equipment/property is sold "AS IS, WHERE IS" with no warranty or guarantees, expressed or implied, No operational assessments have been made by DPA Auctions on this item, it has been photographed ONLY.



---

**#204 - Nh3 Nurse Tank (DR8549 Unit 11)**

Nh3 Nurse Tank (DR8549 Unit 11), 1000 gallon Nh3 tank, top front fill, data plate, Pryor style running gear, rear hitch, 12.5-15 tires. Notes: VTP inspection in 2012 with all paperwork. Item Location: Burbank, SD 57010 Equipment Sold "AS IS, WHERE IS": All equipment/property is sold "AS IS, WHERE IS" with no warranty or guarantees, expressed or implied, No operational assessments have been made by DPA Auctions on this item, it has been photographed ONLY.



---

**#205 - Nh3 Nurse Tank (DR8550 Unit 4)**

Nh3 Nurse Tank (DR8550 Unit 4), 1000 gallon Nh3 tank, top front fill, data plate, Pryor style running gear, rear hitch, 12.5-15 tires. Notes: VTP inspection in 2012 with all paperwork. Item Location: Burbank, SD 57010 Equipment Sold "AS IS, WHERE IS": All equipment/property is sold "AS IS, WHERE IS" with no warranty or guarantees, expressed or implied, No operational assessments have been made by DPA Auctions on this item, it has been photographed ONLY.



---

**#206 - Nh3 Nurse Tank (DR8551 Unit 9)**

Nh3 Nurse Tank (DR8551 Unit 9), 1000 gallon Nh3 tank, top front fill, data plate, Pryor style running gear, rear hitch, 12.5-15 tires. Notes: VTP inspection in 2012 with all paperwork. Item Location: Burbank, SD 57010 Equipment Sold "AS IS, WHERE IS": All equipment/property is sold "AS IS, WHERE IS" with no warranty or guarantees, expressed or implied, No operational assessments have been made by DPA Auctions on this item, it has been photographed ONLY.



---

**#207 - Nh3 Nurse Tank (DR8552 Unit 17)**

Nh3 Nurse Tank (DR8552 Unit 17), 1000 gallon Nh3 tank, top front fill, data plate, Pryor style running gear, rear hitch, 11L-15 tires. Notes: VTP inspection in 2012 with all paperwork. Item Location: Burbank, SD 57010 Equipment Sold "AS IS, WHERE IS": All equipment/property is sold "AS IS, WHERE IS" with no warranty or guarantees, expressed or implied, No operational assessments have been made by DPA Auctions on this item, it has been photographed ONLY.



---

**#208 - Nh3 Nurse Tank (DR8553 Unit 19)**

Nh3 Nurse Tank (DR8553 Unit 19), 1000 gallon Nh3 tank, top front fill, data plate, Pryor style running gear, rear hitch, 11L-15 tires. Notes: VTP inspection in 2012 with all paperwork. Item Location: Burbank, SD 57010 Equipment Sold "AS IS, WHERE IS": All equipment/property is sold "AS IS, WHERE IS" with no warranty or guarantees, expressed or implied, No operational assessments have been made by DPA Auctions on this item, it has been photographed ONLY.



---

**#209 - Nh3 Nurse Tank (DR8554 Unit 1)**

Nh3 Nurse Tank (DR8554 Unit 1), 1000 gallon Nh3 tank, top front fill, data plate, Pryor style running gear, rear hitch, 12.5-15 tires. Notes: VTP inspection in 2012 with all paperwork. Item Location: Burbank, SD 57010 Equipment Sold "AS IS, WHERE IS": All equipment/property is sold "AS IS, WHERE IS" with no warranty or guarantees, expressed or implied, No operational assessments have been made by DPA Auctions on this item, it has been photographed ONLY.



---

**#210 - Nh3 Nurse Tank (DR8555 Unit 18)**

Nh3 Nurse Tank (DR8555 Unit 18), 1000 gallon Nh3 tank, top front fill, data plate, Pryor style running gear, rear hitch, 12.5-15 tires. Notes: VTP inspection in 2012 with all paperwork. Item Location: Burbank, SD 57010 Equipment Sold "AS IS, WHERE IS": All equipment/property is sold "AS IS, WHERE IS" with no warranty or guarantees, expressed or implied, No operational assessments have been made by DPA Auctions on this item, it has been photographed ONLY.



---

**#211 - Nh3 Nurse Tank (DR8556 Unit 16)**

Nh3 Nurse Tank (DR8556 Unit 16), 1000 gallon Nh3 tank, top front fill, data plate, 5th wheel style running gear, rear hitch, 12.5-15 tires. Notes: VTP inspection in 2012 with all paperwork. Item Location: Burbank, SD 57010 Equipment Sold "AS IS, WHERE IS": All equipment/property is sold "AS IS, WHERE IS" with no warranty or guarantees, expressed or implied, No operational assessments have been made by DPA Auctions on this item, it has been photographed ONLY.



---

**#212 - Nh3 Nurse Tank (DR8557 Unit 2)**

Nh3 Nurse Tank (DR8557 Unit 2), 1000 gallon Nh3 tank, top front fill, data plate, 5th wheel style running gear, rear hitch, 12.5-15 tires. Notes: VTP inspection in 2012 with all paperwork. Item Location: Burbank, SD 57010 Equipment Sold "AS IS, WHERE IS": All equipment/property is sold "AS IS, WHERE IS" with no warranty or guarantees, expressed or implied, No operational assessments have been made by DPA Auctions on this item, it has been photographed ONLY.



---

**#213 - Mobility 500 (DR8544)**

Mobility 500 (DR8544), 5 ton stainless steel high rise buggy spreader, ground drive web chain, dual spinners, adjustable axles, 22.5 tires. Notes: PTO is not seen in pictures IS INCLUDED. Item Location: Burbank, SD 57010 Equipment Sold "AS IS, WHERE IS": All equipment/property is sold "AS IS, WHERE IS" with no warranty or guarantees, expressed or implied, No operational assessments have been made by DPA Auctions on this item, it has been photographed ONLY.



---

**#214 - Western Tender Box (DR8561)**

Western Tender Box (DR8561), 10 ton dry fertilizer tender box, hydraulic rear auger, manual tarp. Notes: Box was used fall of 2017. Item Location: Brookston, IN 47923 Equipment Sold "AS IS, WHERE IS": All equipment/property is sold "AS IS, WHERE IS" with no warranty or guarantees, expressed or implied, No operational assessments have been made by DPA Auctions on this item, it has been photographed ONLY.



---

**#215 - Western Tender Box (DR8562)**

Western Tender Box (DR8562), 16 ton dry fertilizer tender box, hydraulic rear auger, manual tarp. Notes: Box was used fall of 2017. Item Location: Brookston, IN 47923 Equipment Sold "AS IS, WHERE IS": All equipment/property is sold "AS IS, WHERE IS" with no warranty or guarantees, expressed or implied, No operational assessments have been made by DPA Auctions on this item, it has been photographed ONLY.



---

**#217 - New Leader Multiplier Bin (DR8572)**

New Leader Multiplier Bin (DR8572), New Leader L4000 G4 stainless steel Multiplier dry bin. Notes: Don't believe this bin has EVER been used. Item Location: Dowagiac, MI 49047 Equipment Sold "AS IS, WHERE IS": All equipment/property is sold "AS IS, WHERE IS" with no warranty or guarantees, expressed or implied, No operational assessments have been made by DPA Auctions on this item, it has been photographed ONLY.





## #218 - New Leader Multiplier Bin (DR8573)

New Leader Multiplier Bin (DR8573), New Leader L4000 G4 stainless steel Multiplier dry bin. Notes: Don't believe this bin has EVER been used Item Location: Dowagiac, MI 49047 Equipment Sold "AS IS, WHERE IS": All equipment/property is sold "AS IS, WHERE IS" with no warranty or guarantees, expressed or implied, No operational assessments have been made by DPA Auctions on this item, it has been photographed ONLY.



## #219 - Ag Chem Liquid System (DR8564)

Ag Chem Liquid System (DR8564), 1800 gallon stainless steel liquid tank, 60/80' boom, 30" centers, foam markers, stainless steel foam tank, wired for Raven Viper Pro, has NO CONTROLLER, came off Terra Gator 8300. Notes: This was on a combo unit ONLY used 1-2 times. Item Location: Dowagiac, MI 49047 Equipment Sold "AS IS, WHERE IS": All equipment/property is sold "AS IS, WHERE IS" with no warranty or guarantees, expressed or implied, No operational assessments have been made by DPA Auctions on this item, it has been photographed ONLY.



## #220 - Hutchinson Conveyor (DR8558)

Hutchinson Conveyor (DR8558), 100' X 9" paddle grain conveyor, 30hp 3 phase electric motor, hydraulic up/down. Notes: Item Location: Beresford, SD 57004 Equipment Sold "AS IS, WHERE IS": All equipment/property is sold "AS IS, WHERE IS" with no warranty or guarantees, expressed or implied, No operational assessments have been made by DPA Auctions on this item, it has been photographed ONLY.



## #221 - Hutchinson Conveyor (DR8559)

Hutchinson Conveyor (DR8559), 100' X 9" paddle grain conveyor, 25hp 3 phase electric motor, hydraulic up/down. Notes: Item Location: Beresford, SD 57004 Equipment Sold "AS IS, WHERE IS": All equipment/property is sold "AS IS, WHERE IS" with no warranty or guarantees, expressed or implied, No operational assessments have been made by DPA Auctions on this item, it has been photographed ONLY.



## #222 - New Holland 273 (DR8535)

New Holland 273 (DR8535), model 273 twine tie small square baler, 540 PTO. Notes: Baler work great last year when used last. Item Location: Woodstock, MN 56186 Equipment Sold "AS IS, WHERE IS": All equipment/property is sold "AS IS, WHERE IS" with no warranty or guarantees, expressed or implied, No operational assessments have been made by DPA Auctions on this item, it has been photographed ONLY.



## #223 - Wilrich Field Cultivator (DR8149)

Wilrich Field Cultivator (DR8149), Excel Series 48' hydraulic folding field cultivator, walking tandem axles, walking tandem gauge wheels, 4 bar rear harrow, 31X13.5-15 tires. Notes: Item Location: Woodstock, MN 56186 Equipment Sold "AS IS, WHERE IS": All equipment/property is sold "AS IS, WHERE IS" with no warranty or guarantees, expressed or implied, No operational assessments have been made by DPA Auctions on this item, it has been photographed ONLY.



## #224 - John Deere 2800 (DR8536)

John Deere 2800 (DR8536), 5 bottom mold board plow, heavy duty rock trips, buster bar harrow, hydraulic rear gauge wheel, 2 point mount. Notes: Item Location: Woodstock, MN 56186 Equipment Sold "AS IS, WHERE IS": All equipment/property is sold "AS IS, WHERE IS" with no warranty or guarantees, expressed or implied, No operational assessments have been made by DPA Auctions on this item, it has been photographed ONLY.



## #225 - DMI 2800 Applicator (DR8538 Unit 33925)

DMI 2800 Applicator (DR8538 Unit 33925), 15 knife coulter injection, 1300 gallon poly liquid tank, hydraulic wings, ground drive pump, 420/80R46 row crop tires. Notes: Item Location: Centerville, SD 57014 Equipment Sold "AS IS, WHERE IS": All equipment/property is sold "AS IS, WHERE IS" with no warranty or guarantees, expressed or implied, No operational assessments have been made by DPA Auctions on this item, it has been photographed ONLY.



## #226 - 2002 Chevy 1500HD (DR8537 Unit 33921)

2002 Chevy 1500HD (DR8537 Unit 33921), 6.0 liter gas engine, automatic transmission, crew cab, 4X4, power windows & locks, rear receiver hitch, AM/FM CD & cassette radio, air conditioning, cruise control, 245/75R16 tires, shows 280,128 miles. Notes: PLEASE ALLOW AT LEAST 60 DAYS FOR TITLE TRANSFER. Item Location: Centerville, SD 57014 Equipment Sold "AS IS, WHERE IS": All equipment/property is sold "AS IS, WHERE IS" with no warranty or guarantees, expressed or implied, No operational assessments have been made by DPA Auctions on this item, it has been photographed ONLY.



### #227 - 2012 Chevy 1500 (DR8540 Unit 27804)

2012 Chevy 1500 (DR8540 Unit 27804), 5.3 liter gas engine, automatic transmission, crew cab, 4X4, power windows & locks, rear receiver hitch, AM/FM CD radio, air conditioning, cruise control, bed liner, 265/70R16 tires, shows 174,169 miles. Notes: This pickup runs BUT has a knock. Has been to the dealership and is either lifters or cam shaft or both. Right front tire and wheel has been replaced. See pictures. PLEASE ALLOW AT LEAST 60 DAYS FOR TITLE TRANSFER. Item Location: Centerville, SD 57014 Equipment Sold "AS IS, WHERE IS": All equipment/property is sold "AS IS, WHERE IS" with no warranty or guarantees, expressed or implied, No operational assessments have been made by DPA Auctions on this item, it has been photographed ONLY.



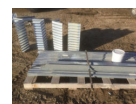
### #228 - John Deere 544A (DR8569)

John Deere 544A (DR8569), John Deere diesel engine, shuttle drive, hydraulic grapple tooth bucket, auxiliary hydraulics, rear hitch and counter weight, 14.00-24 tires. Notes: Front windshield is cracked all other glass is good. Item Location: Dakota City, NE 68731 Equipment Sold "AS IS, WHERE IS": All equipment/property is sold "AS IS, WHERE IS" with no warranty or guarantees, expressed or implied, No operational assessments have been made by DPA Auctions on this item, it has been photographed ONLY.



### #229 - MayCor Containment System (JA101)

MayCor Containment System (JA101), for fuel/oil/ liquid barrel sites, this kit makes a 16x16 square container, the panels are 32" tall, corrugated and galvanized material, kits are brand new, includes bolts and liner. Notes: Item Location: Central City, IA 52214 Equipment Sold "AS IS, WHERE IS": All equipment/property is sold "AS IS, WHERE IS" with no warranty or guarantees, expressed or implied, No operational assessments have been made by DPA Auctions on this item, it has been photographed ONLY.



### #230 - MayCor Containment System (JA102)

MayCor Containment System (JA102), for fuel/oil/ liquid barrel sites, this unit is 84 linear feet of wall, will make a 12.30 container, kit includes bolts, liner and bracing, unit is made of 32" corrugated/galvanized steel. Notes: Item Location: Central City, IA 52214 Equipment Sold "AS IS, WHERE IS": All equipment/property is sold "AS IS, WHERE IS" with no warranty or guarantees, expressed or implied, No operational assessments have been made by DPA Auctions on this item, it has been photographed ONLY.



### #231 - MayCor Containment System (JA103)

MayCor Containment System (JA103), for fuel/oil/ liquid barrel sites, this kit makes a 24x48 container, 128 linear feet of wall, kit includes bolts, liner and bracing, walls of the kit are 32" tall, 4 corner pieces. Notes: Item Location: Central City, IA 52214 Equipment Sold "AS IS, WHERE IS": All equipment/property is sold "AS IS, WHERE IS" with no warranty or guarantees, expressed or implied, No operational assessments have been made by DPA Auctions on this item, it has been photographed ONLY.



### #232 - Fox Manufacturing Truck Box Stabilizer (JA104)

Fox Manufacturing Truck Box Stabilizer (JA104), usable for tandem truck with boxes using 1 cylinder, 2 cylinder or scissor lift system, brand new, never used, welds to frame and instructions are included. Notes: Item Location: Central City, IA 52214 Equipment Sold "AS IS, WHERE IS": All equipment/property is sold "AS IS, WHERE IS" with no warranty or guarantees, expressed or implied, No operational assessments have been made by DPA Auctions on this item, it has been photographed ONLY.



### #233 - 1999 Gaylean Killabrew (DR7315, Unit 9169)

1999 Gaylean Killabrew (DR7315, Unit 9169), tandem axle, hydraulic dry fertilizer tender trailer, 4 compartment, has pump NO MOTOR, 10.00-20 tires. Notes: Item Location: New Iberia, LA 70563 Equipment Sold "AS IS, WHERE IS": All equipment/property is sold "AS IS, WHERE IS" with no warranty or guarantees, expressed or implied, No operational assessments have been made by DPA Auctions on this item, it has been photographed ONLY.



### #234 - 1997 Gaylean Killabrew (DR7316, Unit 9167)

1997 Gaylean Killabrew (DR7316, Unit 9167), tandem axle, hydraulic dry fertilizer tender trailer, 4 compartment, has pump NO MOTOR, 11-22.5 tires. Notes: Item Location: New Iberia, LA 70563 Equipment Sold "AS IS, WHERE IS": All equipment/property is sold "AS IS, WHERE IS" with no warranty or guarantees, expressed or implied, No operational assessments have been made by DPA Auctions on this item, it has been photographed ONLY.



### #235 - 1998 Gaylean Killabrew (DR7317, Unit 9168)

1998 Gaylean Killabrew (DR7317, Unit 9168), tandem axle, hydraulic dry fertilizer tender trailer, 4 compartment, has pump NO MOTOR, 11-R22.5 tires. Notes: Item Location: New Iberia, LA 70563 Equipment Sold "AS IS, WHERE IS": All equipment/property is sold "AS IS, WHERE IS" with no warranty or guarantees, expressed or implied, No operational assessments have been made by DPA Auctions on this item, it has been photographed ONLY.



### #237 - 2010 Mack CXU613 (DR8650)

2010 Mack CXU613 (DR8650), Mack MP 8 diesel engine, 10 speed transmission, air ride suspension, tandem axle full screw, engine brake, 3:42 gears, air ride day cab, hydraulic wet kit, AM/FM CD radio, cruise control, heat/air conditioning, 11R-22.5 tires, outside aluminum wheels, shows 768,970 miles. Notes: Item Location: Alamo, TN 38001 Equipment Sold "AS IS, WHERE IS": All equipment/property is sold "AS IS, WHERE IS" with no warranty or guarantees, expressed or implied, No operational assessments have been made by DPA Auctions on this item, it has been photographed ONLY.



### #238 - 1999 Peterbilt 379 Extended Hood (DR8560)

1999 Peterbilt 379 Extended Hood (DR8560), 500 hp Detroit 60 series diesel engine, (overhauled @ 950,000), engine brake, 18 speed transmission, tandem axle full screw, full line wet kit, Pete low leaf air ride suspension, cruise control, 10 NEW VIRGIN tires, outside aluminum wheels, dual chrome stacks, dual chrome air breathers, stainless steel drop visor, air slide 5th wheel, shows 1,280,114 miles. Notes: Truck has REBUILT TITLE and has been run that way since 2006. Engine was overhauled @ 950,000 miles, with paperwork. Item Location: Alamo, TN 38001 Equipment Sold "AS IS, WHERE IS": All equipment/property is sold "AS IS, WHERE IS" with no warranty or guarantees, expressed or implied, No operational assessments have been made by DPA Auctions on this item, it has been photographed ONLY.



### #239 - 2017 Malibu Wakesetter 23 LSV (CG508)

2017 Malibu Wakesetter 23 LSV (CG508), Indmar 6.2 liter 410 Monsoon, Bimini top, tower speakers, spinning board racks, transom flush kit, docking lights, underwater lights, subwoofer, cover, tandem axle trailer, Malibu's all-time best-selling boat is back and better than ever, this 23-footer hits the sweet spot and not only sets but continually raises the bar, if you ever hear another watersports boatmaker admitting how fierce the competition is know that they're talking about Malibu and the Wakesetter 23 LSV. Notes: Full new boat warranty included. Financing available to qualified buyers-terms vary call for more details. Item Location: Valley, NE 68064 Equipment Sold "AS IS, WHERE IS": All equipment/property is sold "AS IS, WHERE IS" with no warranty or guarantees, expressed or implied, No operational assessments have been made by DPA Auctions on this item, it has been photographed ONLY.



### #240 - Liquid System for a 2003 6103 Terra Gator (ED480)

Liquid System for a 2003 6103 Terra Gator (ED480), 75 foot booms, 1800 gallon tank. Notes: Item Location: Raymond, NE 68428 Equipment Sold "AS IS, WHERE IS": All equipment/property is sold "AS IS, WHERE IS" with no warranty or guarantees, expressed or implied, No operational assessments have been made by DPA Auctions on this item, it has been photographed ONLY.



### #241 - 2001 Timpfe 41' Hopper Trailer (KMK494)

2001 Timpfe 41' Hopper Trailer (KMK494), 41' aluminum grain trailer, ag hoppers, new tarp with auto openers, air ride suspension, brakes are at 60%, 11R22.5 tires are at 75%, aluminum wheels, back and 5th wheel rebuilt. Notes: Item Location: Weldon, IL 61882 Equipment Sold "AS IS, WHERE IS": All equipment/property is sold "AS IS, WHERE IS" with no warranty or guarantees, expressed or implied, No operational assessments have been made by DPA Auctions on this item, it has been photographed ONLY.



### #242 - 2001 Wilson Livestock Trailer (KMK2091)

2001 Wilson Livestock Trailer (KMK2091), 53ft, tri axle, spring suspension, 275/80 R 24.5 tires, unit # 125, model PSDCL-302, GVRW 75,000lbs, all aluminum wheels. Notes: Item Location: Scribner, NE 68057 Equipment Sold "AS IS, WHERE IS": All equipment/property is sold "AS IS, WHERE IS" with no warranty or guarantees, expressed or implied, No operational assessments have been made by DPA Auctions on this item, it has been photographed ONLY.



### #243 - 1987 Ford LTS9000 (KMK2094)

1987 Ford LTS9000 (KMK2094), Cummins L 10 engine, 10 speed road ranger transmission, Pioneer AM/FM CD radio, heat & A/C, 275/80R24.5 tires, tandem axle, dual fuel tanks, air ride suspension, all aluminum wheels, shows 45,262 miles. Notes: Item Location: Scribner, NE 68057 Equipment Sold "AS IS, WHERE IS": All equipment/property is sold "AS IS, WHERE IS" with no warranty or guarantees, expressed or implied, No operational assessments have been made by DPA Auctions on this item, it has been photographed ONLY.



---

### #244 - 2001 Peterbilt 379 Day Cab (KMK2095)

2001 Peterbilt 379 Day Cab (KMK2095), N14 Cummins diesel engine, Eaton Fuller transmission, 10 speed, heat & A/C, air leaf suspension, 11R22.5 tires, tandem axle, dual chrome air cleaners, dual fuel tanks, outside aluminum wheels, cruise control, Jake brake, stainless steel drop visor, air ride cab, shows 246,041 miles. Notes: Item Location: Scribner, NE 68057 Equipment Sold "AS IS, WHERE IS": All equipment/property is sold "AS IS, WHERE IS" with no warranty or guarantees, expressed or implied, No operational assessments have been made by DPA Auctions on this item, it has been photographed ONLY.



---

### #245 - 2015 GMC Terrain SLT-2 V6 AWD (ED481)

2015 GMC Terrain SLT-2 V6 AWD (ED481), 300HP 3.6L V6, 6 speed automatic, all wheel drive, Navigation, Pioneer sound system, 6 disc CD changer with MP3, auxiliary and Bluetooth input, loaded with options, Key fob remote start as well as remote start and door unlock via OnStar app for free, 5/32" tires, lane departure warning, forward crash warning, dual heated seats, memory drivers seat, power rear gate, power sunroof, factory receiver hitch, vehicle is still under the factory 60 month 100,000 mile warranty, Iridium metallic in color, great car drives great, shows 64,000 miles. Notes: Item Location: Sheldon, IA 51201 Equipment Sold "AS IS, WHERE IS": All equipment/property is sold "AS IS, WHERE IS" with no warranty or guarantees, expressed or implied, No operational assessments have been made by DPA Auctions on this item, it has been photographed ONLY.



---

### #246 - 1999 Chevrolet 2500 4x4 Pickup (NP6578)

1999 Chevrolet 2500 4x4 Pickup (NP6578), extended cab, 350 gas engine, automatic transmission, LS trim, DMI drop center bumper hitch, Boss snow plow mounts and controller, snow plow package, shows 207,040 miles. Notes: Body is in good shape, transmission does slip. Item Location: Bourbonnais, IL 60914 Equipment Sold "AS IS, WHERE IS": All equipment/property is sold "AS IS, WHERE IS" with no warranty or guarantees, expressed or implied, No operational assessments have been made by DPA Auctions on this item, it has been photographed ONLY.



---

### #247 - Ray Man Conveyor (PZ8959, Unit T304)

Ray Man Conveyor (PZ8959, Unit T304), Ray Man model 10827SC conveyor, Baldor 3 hp electric motor, power box, portable, Notes: Item Location: De Witt, IA 52742 Equipment Sold "AS IS, WHERE IS": All equipment/property is sold "AS IS, WHERE IS" with no warranty or guarantees, expressed or implied, No operational assessments have been made by DPA Auctions on this item, it has been photographed ONLY.



---

### #248 - John Deere Liquid System (DR8571)

John Deere Liquid System (DR8571), 1200 gallon stainless steel liquid system, 120' boom, foam marker, poly foam marker tank, came off 2009 John Deere 4930 combo unit. Notes: Running gear NOT included. Item Location: New Berlin, IL 62670 Equipment Sold "AS IS, WHERE IS": All equipment/property is sold "AS IS, WHERE IS" with no warranty or guarantees, expressed or implied, No operational assessments have been made by DPA Auctions on this item, it has been photographed ONLY.



---

### #249 - Roskamp Roller Mill (DR8570)

Roskamp Roller Mill (DR8570), Roskamp double roller/grinder mill, 9" diameter X 30" rollers, (2) 20hp electric motors, stater and breaker boxes included. Notes: Item Location: Braymer, MO 64624 Equipment Sold "AS IS, WHERE IS": All equipment/property is sold "AS IS, WHERE IS" with no warranty or guarantees, expressed or implied, No operational assessments have been made by DPA Auctions on this item, it has been photographed ONLY.



---

### #250 - 1996 IHC Silver Wheels Center Ride Dry Floater (PZ8961)

1996 IHC Silver Wheels Center Ride Dry Floater (PZ8961), DT466 diesel engine, Allison automatic transmission, heat, Am/Fm radio, New Leader 2020GT dry spreader box (S/N 104528), #5 belt, 409 stainless steel, twin spinner, all hydraulic, front tires @ 85%, rear tires @ 75%, MID TECH controller, Trimble guidance, shows 6853 hours, 69,338 miles. Notes: New motor and transmission 1600 hours ago. Please contact seller for more information. Get shape runs excellent. Item Location: Cordova, IL 61242 Equipment Sold "AS IS, WHERE IS": All equipment/property is sold "AS IS, WHERE IS" with no warranty or guarantees, expressed or implied, No operational assessments have been made by DPA Auctions on this item, it has been photographed ONLY.





---

### #251 - 1987 Ford LN8000 Dry Floater (PZ8960)

1987 Ford LN8000 Dry Floater (PZ8960), Ford 7.4 Inline 6 diesel engine, 5 speed transmission, 2 speed rear end, heat, radio, New Leader L2020 dry spreader box, 409 stainless steel, twin spinner, all hydraulic, rebuilt hydraulic gear drive on rear, tires @ 25%. Notes: 10,000 acres on new belt, bearings and slack adj. Please call seller for more information. Runs excellent. Item Location: Cordova, IL 61242 Equipment Sold "AS IS, WHERE IS": All equipment/property is sold "AS IS, WHERE IS" with no warranty or guarantees, expressed or implied, No operational assessments have been made by DPA Auctions on this item, it has been photographed ONLY.



---

### #252 - NH3 Nurse Tank (PZ8965, Unit 9)

NH3 Nurse Tank (PZ8965, Unit 9), 1000 gallon NH3 nurse tank, top front fill, did not pass inspection. Notes: Item Location: Keenes, IL 62851 Equipment Sold "AS IS, WHERE IS": All equipment/property is sold "AS IS, WHERE IS" with no warranty or guarantees, expressed or implied, No operational assessments have been made by DPA Auctions on this item, it has been photographed ONLY.



---

### #253 - NH3 Nurse Tank (PZ8966, Unit 51)

NH3 Nurse Tank (PZ8966, Unit 51), 1000 gallon NH3 nurse tank, top front fill, did not pass inspection. Notes: Item Location: Keenes, IL 62851 Equipment Sold "AS IS, WHERE IS": All equipment/property is sold "AS IS, WHERE IS" with no warranty or guarantees, expressed or implied, No operational assessments have been made by DPA Auctions on this item, it has been photographed ONLY.



---

### #254 - NH3 Nurse Tank (PZ8967, Unit 431)

NH3 Nurse Tank (PZ8967, Unit 431), 1000 gallon NH3 nurse tank, top front fill, did not pass inspection. Notes: Item Location: Keenes, IL 62851 Equipment Sold "AS IS, WHERE IS": All equipment/property is sold "AS IS, WHERE IS" with no warranty or guarantees, expressed or implied, No operational assessments have been made by DPA Auctions on this item, it has been photographed ONLY.



---

### #255 - NH3 Nurse Tank (PZ8968, Unit 126B)

NH3 Nurse Tank (PZ8968, Unit 126B), 1000 gallon NH3 nurse tank, center fill, did not pass inspection. Notes: Item Location: Keenes, IL 62851 Equipment Sold "AS IS, WHERE IS": All equipment/property is sold "AS IS, WHERE IS" with no warranty or guarantees, expressed or implied, No operational assessments have been made by DPA Auctions on this item, it has been photographed ONLY.



---

### #256 - NH3 Nurse Tank (PZ8969, Unit 85)

NH3 Nurse Tank (PZ8969, Unit 85), 1000 gallon NH3 nurse tank, center fill, did not pass inspection. Notes: Item Location: Keenes, IL 62851 Equipment Sold "AS IS, WHERE IS": All equipment/property is sold "AS IS, WHERE IS" with no warranty or guarantees, expressed or implied, No operational assessments have been made by DPA Auctions on this item, it has been photographed ONLY.



---

### #257 - NH3 Nurse Tank (PZ8970, Unit 21)

NH3 Nurse Tank (PZ8970, Unit 21), 1000 gallon NH3 nurse tank, top front fill, did not pass inspection. Notes: Item Location: Keenes, IL 62851 Equipment Sold "AS IS, WHERE IS": All equipment/property is sold "AS IS, WHERE IS" with no warranty or guarantees, expressed or implied, No operational assessments have been made by DPA Auctions on this item, it has been photographed ONLY.



---

### #258 - Western Dry Spreader (PZ8964)

Western Dry Spreader (PZ8964), Western stainless steel dry spreader, single spinner, tandem axle, 16.5L-16.1SL flotation tires. Notes: Item Location: Keenes, IL 62851 Equipment Sold "AS IS, WHERE IS": All equipment/property is sold "AS IS, WHERE IS" with no warranty or guarantees, expressed or implied, No operational assessments have been made by DPA Auctions on this item, it has been photographed ONLY.



---

### #259 - 2007 Case 321E Loader (PZ8963)

2007 Case 321E Loader (PZ8963), diesel engine, shuttle shift transmission, canopy, lights, bucket, 12-16.5 RG400 N.H.S tires, shows 617 hours. Notes: Item Location: Keenes, IL 62851 Equipment Sold "AS IS, WHERE IS": All equipment/property is sold "AS IS, WHERE IS" with no warranty or guarantees, expressed or implied, No operational assessments have been made by DPA Auctions on this item, it has been photographed ONLY.



---

### #260 - (4) Firestone Flotation Tires/Rims (NP6580)

(4) Firestone Flotation Tires/Rims (NP6580), size 600/65R38, 65-70% tread, 12 bolt rim pattern, came off a John Deere 4830 sprayer, have been over roughly 12,000-15,000 acres. Notes: Item Location: Hawarden, IA 51023 Equipment Sold "AS IS, WHERE IS": All equipment/property is sold "AS IS, WHERE IS" with no warranty or guarantees, expressed or implied, No operational assessments have been made by DPA Auctions on this item, it has been photographed ONLY.



---

### #261 - 2007 Top Air TA1600 Pull Type Sprayer (NP6581)

2007 Top Air TA1600 Pull Type Sprayer (NP6581), 1,600 gallon poly liquid tank, 90' boom, rinse tank, agitator, section shut offs, ground speed indicator, 380/90R46 tires, duals, remote wing lifts, Top Air SCS 450 NVM controller, Top Air foam marker control, Top Air boom control and command center. Notes: Item Location: Beloit, KS 67420 Equipment Sold "AS IS, WHERE IS": All equipment/property is sold "AS IS, WHERE IS" with no warranty or guarantees, expressed or implied, No operational assessments have been made by DPA Auctions on this item, it has been photographed ONLY.



---

### #262 - 1982 Terra Gator 1603T Dry Floater (TR4707)

1982 Terra Gator 1603T Dry Floater (TR4707), Cat diesel engine, dry spreader box, dual spinners, hydraulic, heat/AC, 9 speed transmission. Notes: Non Runner (dropped valve) transmission was good when it was parked, Flat tires. Item Location: Pender, NE 68047 Equipment Sold "AS IS, WHERE IS": All equipment/property is sold "AS IS, WHERE IS" with no warranty or guarantees, expressed or implied, No operational assessments have been made by DPA Auctions on this item, it has been photographed ONLY.



---

### #263 - Dry Tender Box (TR4702)

Dry Tender Box (TR4702), rear discharge auger, 10 ton capacity, hydraulic, tarp. Notes: Gear is not included. Item Location: Pender, NE 68047 Equipment Sold "AS IS, WHERE IS": All equipment/property is sold "AS IS, WHERE IS" with no warranty or guarantees, expressed or implied, No operational assessments have been made by DPA Auctions on this item, it has been photographed ONLY.



---

### #264 - Ray Man Dry Tender Box (TR4703)

Ray Man Dry Tender Box (TR4703), hydraulic, reservoir, overhead discharge auger, stainless, roll tarp. Notes: Gear is not included. Item Location: Pender, NE 68047 Equipment Sold "AS IS, WHERE IS": All equipment/property is sold "AS IS, WHERE IS" with no warranty or guarantees, expressed or implied, No operational assessments have been made by DPA Auctions on this item, it has been photographed ONLY.



---

### #265 - Ag Chem Air Spreader Box (TR4704)

Ag Chem Air Spreader Box (TR4704), Ag Chem air spreader box. Notes: Gear is not included. Item Location: Pender, NE 68047 Equipment Sold "AS IS, WHERE IS": All equipment/property is sold "AS IS, WHERE IS" with no warranty or guarantees, expressed or implied, No operational assessments have been made by DPA Auctions on this item, it has been photographed ONLY.



---

### #266 - Ag Chem Liquid System (TR4705)

Ag Chem Liquid System (TR4705), 60/80 booms, 1600 gallon stainless steel tank, foam marker tank. Notes: Gear is not included. Item Location: Pender, NE 68047 Equipment Sold "AS IS, WHERE IS": All equipment/property is sold "AS IS, WHERE IS" with no warranty or guarantees, expressed or implied, No operational assessments have been made by DPA Auctions on this item, it has been photographed ONLY.



---

### #267 - Tyler Air Spreader Box (TR4706)

Tyler Air Spreader Box (TR4706), Tyler Fluid Air box, tarp, fenders. Notes: Gear is not included. Item Location: Pender, NE 68047 Equipment Sold "AS IS, WHERE IS": All equipment/property is sold "AS IS, WHERE IS" with no warranty or guarantees, expressed or implied, No operational assessments have been made by DPA Auctions on this item, it has been photographed ONLY.



---

### #268 - 2005 Freightliner ST120 Liquid Truck (TR4701)

2005 Freightliner ST120 Liquid Truck (TR4701), Mercedes Benz Diesel, 3 pedal Ultra Shift, 2550 gal poly tank, 1000 gal poly tank, on flatbed, tandem axle, (2) Pumps/motors, air ride, air brakes, AM/FM w/remote, AC/Heat, cruise control, engine brake, 866,654 miles, power mirrors, power windows, 275/80R22.5 tires. Notes: Item Location: Pender, NE 68047 Equipment Sold "AS IS, WHERE IS": All equipment/property is sold "AS IS, WHERE IS" with no warranty or guarantees, expressed or implied, No operational assessments have been made by DPA Auctions on this item, it has been photographed ONLY.



---

### #269 - Peck Grain Auger (PZ6718)

Peck Grain Auger (PZ6718), Peck 41' x 10" grain auger, 540 PTO, portable. Notes: Item Location: West Point, NE 68788 Equipment Sold "AS IS, WHERE IS": All equipment/property is sold "AS IS, WHERE IS" with no warranty or guarantees, expressed or implied, No operational assessments have been made by DPA Auctions on this item, it has been photographed ONLY.



---

### #270 - 1987 Kenworth T600 Liquid Truck (TR4700)

1987 Kenworth T600 Liquid Truck (TR4700), 400 HP big cam Cummins diesel engine, 3600 gallon double connical poly tank, 13 speed transmission, Twin 80 gal inductors, pump/motor, tandem axle full rear fenders, air brakes, 275/80R-22.5 tires, AM/FM, Heat/AC, 928,727 miles. Notes: Engine has out of frame overhaul, been less than 10,000 miles ago (paperwork available). Item Location: Pender, NE 68047 Equipment Sold "AS IS, WHERE IS": All equipment/property is sold "AS IS, WHERE IS" with no warranty or guarantees, expressed or implied, No operational assessments have been made by DPA Auctions on this item, it has been photographed ONLY.



---

### #271 - Quality Plus Flow Assist (PZ8972)

Quality Plus Flow Assist (PZ8972), Quality Plus flow assist NH3 application system. Notes: Item Location: Waukon, IA 52172 Equipment Sold "AS IS, WHERE IS": All equipment/property is sold "AS IS, WHERE IS" with no warranty or guarantees, expressed or implied, No operational assessments have been made by DPA Auctions on this item, it has been photographed ONLY.



---

### #272 - Rims (PZ8973)

Rims (PZ8973), 25 - 16.1-14 rims. Notes: Item Location: Waukon, IA 52172 Equipment Sold "AS IS, WHERE IS": All equipment/property is sold "AS IS, WHERE IS" with no warranty or guarantees, expressed or implied, No operational assessments have been made by DPA Auctions on this item, it has been photographed ONLY.



---

### #274 - Allen-Bradley 1336 Plus Adjustable Frequency AC Drive (AL288)

Allen-Bradley 1336 Plus Adjustable Frequency AC Drive (AL288). Notes: Item Location: Minooka, IL 60447 Equipment Sold "AS IS, WHERE IS": All equipment/property is sold "AS IS, WHERE IS" with no warranty or guarantees, expressed or implied, No operational assessments have been made by DPA Auctions on this item, it has been photographed ONLY.



---

### #275 - Stone Model Bulldog Trench Roller

Stone Model Bulldog Trench Roller, diesel engine, hydrostatic transmission, vibra-compactor. Notes: Item Location: Omaha, NE 68138 Equipment Sold "AS IS, WHERE IS": All equipment/property is sold "AS IS, WHERE IS" with no warranty or guarantees, expressed or implied, No operational assessments have been made by DPA Auctions on this item, it has been photographed ONLY.



---

### #276 - Ag Systems Spreader (DR8160, Unit 3)

Ag Systems Spreader (DR8160, Unit 3), 5 ton stainless steel dry buggy spreader, ground drive web chain, 540 PTO drive spinner, 12.5L-15 tires. Notes: PTO shaft is MISSING. Item Location: Saint Martin, MN 56376 Equipment Sold "AS IS, WHERE IS": All equipment/property is sold "AS IS, WHERE IS" with no warranty or guarantees, expressed or implied, No operational assessments have been made by DPA Auctions on this item, it has been photographed ONLY.



---

### #277 - Quick Hitch (TR4622)

Quick Hitch (TR4622), Category 4 quick hitch for 8000 and 8R series Deere. Notes: Item Location: Irwin, PA 15642 Equipment Sold "AS IS, WHERE IS": All equipment/property is sold "AS IS, WHERE IS" with no warranty or guarantees, expressed or implied, No operational assessments have been made by DPA Auctions on this item, it has been photographed ONLY.



---

### #278 - Flotation Tires (PZ8787)

Flotation Tires (PZ8787) 4 - 19L-16.1 flotation tires, 2 - 12.5L-15 flotation tires. Notes: Item Location: Northwood, IA 50459 Equipment Sold "AS IS, WHERE IS": All equipment/property is sold "AS IS, WHERE IS" with no warranty or guarantees, expressed or implied, No operational assessments have been made by DPA Auctions on this item, it has been photographed ONLY.



---

### #279 - Flotation Tires (PZ8788)

Flotation Tires (PZ8788), Alliance 48x25.00-20 flotation tires. Notes: Item Location: Northwood, IA 50459 Equipment Sold "AS IS, WHERE IS": All equipment/property is sold "AS IS, WHERE IS" with no warranty or guarantees, expressed or implied, No operational assessments have been made by DPA Auctions on this item, it has been photographed ONLY.



---

### #280 - Hagie Boom Extensions (PZ8784)

Hagie Boom Extensions (PZ8784), 4 - Hagie boom sections. Notes: Item Location: Northwood, IA 50459 Equipment Sold "AS IS, WHERE IS": All equipment/property is sold "AS IS, WHERE IS" with no warranty or guarantees, expressed or implied, No operational assessments have been made by DPA Auctions on this item, it has been photographed ONLY.



---

### #281 - Boom Bucket (PZ8793)

Boom Bucket (PZ8793), Steel Boom with hardware. Notes: Item Location: Northwood, IA 50459 Equipment Sold "AS IS, WHERE IS": All equipment/property is sold "AS IS, WHERE IS" with no warranty or guarantees, expressed or implied, No operational assessments have been made by DPA Auctions on this item, it has been photographed ONLY.



---

### #282 - Convey All Seed Hopper/Scale (PZ8808)

Convey All Seed Hopper/Scale (PZ8808), Convey All 3 - Seed hopper and scale. Notes: Item Location: Maynard, IA 50655 Equipment Sold "AS IS, WHERE IS": All equipment/property is sold "AS IS, WHERE IS" with no warranty or guarantees, expressed or implied, No operational assessments have been made by DPA Auctions on this item, it has been photographed ONLY.



---

### #283 - Kay Tank 1000 Gallon Fuel Tank (PZ8803)

Kay Tank 1000 Gallon Fuel Tank (PZ8803), Kay Tank 1000 gallon steel fuel tank, Fill Rite 115 volt AC dispenser pump, Tuthill series 800C meter, hose. Notes: Item Location: Randalia, IA 52164 Equipment Sold "AS IS, WHERE IS": All equipment/property is sold "AS IS, WHERE IS" with no warranty or guarantees, expressed or implied, No operational assessments have been made by DPA Auctions on this item, it has been photographed ONLY.



---

### #284 - 500 Gallon Fuel Tank (PZ8804)

500 Gallon Fuel Tank (PZ8804), 500 gallon steel fuel tank, Tuthill 115 volt dispenser pump, Tuthill series 800C meter, hose. Notes: Item Location: Randalia, IA 52164 Equipment Sold "AS IS, WHERE IS": All equipment/property is sold "AS IS, WHERE IS" with no warranty or guarantees, expressed or implied, No operational assessments have been made by DPA Auctions on this item, it has been photographed ONLY.



---

### #285 - 500 Gallon Fuel Tank (PZ8805)

500 Gallon Fuel Tank (PZ8805), 500 gallon steel fuel tank, Westinghouse 115 volt pump, Tuthill series 800C meter, hose. Notes: Item Location: Randalia, IA 52164 Equipment Sold "AS IS, WHERE IS": All equipment/property is sold "AS IS, WHERE IS" with no warranty or guarantees, expressed or implied, No operational assessments have been made by DPA Auctions on this item, it has been photographed ONLY.



---

### #286 - Fuel Containment Dike (PZ8806)

Fuel Containment Dike (PZ8806), Approx. 6'x14'x3' steel containment dike. Notes: Item Location: Randalia, IA 52164 Equipment Sold "AS IS, WHERE IS": All equipment/property is sold "AS IS, WHERE IS" with no warranty or guarantees, expressed or implied, No operational assessments have been made by DPA Auctions on this item, it has been photographed ONLY.





### #287 - Liquid Storage Tank (PZ8800)

Liquid Storage Tank (PZ8800), Approx. 12,000 gallon vertical steel liquid storage tank. Notes: This tank must be removed by July 10th, 2018 with NO exceptions. Dismantle, removal and transportation is at the expense, risk and liability of the buyer. Item Location: New Hampton, IA 50659 Equipment Sold "AS IS, WHERE IS": All equipment/property is sold "AS IS, WHERE IS" with no warranty or guarantees, expressed or implied, No operational assessments have been made by DPA Auctions on this item, it has been photographed ONLY.



### #288 - Liquid Storage Tank (PZ8821)

Liquid Storage Tank (PZ8821), Approx. 20,000 gallon cone bottom steel liquid storage tank, stands. Notes: This tank must be removed by July 10th, 2018 with NO exceptions. Dismantle, removal and transportation is at the expense, risk and liability of the buyer. Item Location: Allison, IA 50602 Equipment Sold "AS IS, WHERE IS": All equipment/property is sold "AS IS, WHERE IS" with no warranty or guarantees, expressed or implied, No operational assessments have been made by DPA Auctions on this item, it has been photographed ONLY.



### #289 - Liquid Storage Tank (PZ8822)

Liquid Storage Tank (PZ8822), Metal Equipment Company approx 12,000 gallon plus aluminum liquid storage tank. Notes: This tank must be removed by July 10th, 2018 with NO exceptions. Dismantle, removal and transportation is at the expense, risk and liability of the buyer. Item Location: Allison, IA 50602 Equipment Sold "AS IS, WHERE IS": All equipment/property is sold "AS IS, WHERE IS" with no warranty or guarantees, expressed or implied, No operational assessments have been made by DPA Auctions on this item, it has been photographed ONLY.



### #290 - Liquid Storage Tank (PZ8823)

Liquid Storage Tank (PZ8823), approx 12,000 gallon plus aluminum liquid storage tank. Notes: This tank must be removed by July 10th, 2018 with NO exceptions. Dismantle, removal and transportation is at the expense, risk and liability of the buyer. Item Location: Allison, IA 50602 Equipment Sold "AS IS, WHERE IS": All equipment/property is sold "AS IS, WHERE IS" with no warranty or guarantees, expressed or implied, No operational assessments have been made by DPA Auctions on this item, it has been photographed ONLY.



### #291 - Fuel Dispensers (PZ8812)

Fuel Dispensers (PZ8812), 5 - fuel dispensers. Notes: Item Location: Hazleton, IA 50641 Equipment Sold "AS IS, WHERE IS": All equipment/property is sold "AS IS, WHERE IS" with no warranty or guarantees, expressed or implied, No operational assessments have been made by DPA Auctions on this item, it has been photographed ONLY.



### #292 - Pallet of Torch Leads/Gauges (PZ8813)

Pallet of Torch Leads/Gauges (PZ8813), Pallet of torch leads, gauges. Notes: Item Location: Hazleton, IA 50641 Equipment Sold "AS IS, WHERE IS": All equipment/property is sold "AS IS, WHERE IS" with no warranty or guarantees, expressed or implied, No operational assessments have been made by DPA Auctions on this item, it has been photographed ONLY.



### #293 - Puller (PZ8814)

Puller (PZ8814), Puller, impact, bolt cutter, other items. Notes: Item Location: Hazleton, IA 50641 Equipment Sold "AS IS, WHERE IS": All equipment/property is sold "AS IS, WHERE IS" with no warranty or guarantees, expressed or implied, No operational assessments have been made by DPA Auctions on this item, it has been photographed ONLY.



### #294 - Pallet Winches (PZ8815)

Pallet Winches (PZ8815), Pallet of several winches. Notes: Item Location: Hazleton, IA 50641 Equipment Sold "AS IS, WHERE IS": All equipment/property is sold "AS IS, WHERE IS" with no warranty or guarantees, expressed or implied, No operational assessments have been made by DPA Auctions on this item, it has been photographed ONLY.



### #295 - Pallet Misc Items (PZ8816)

Pallet Misc Items (PZ8816), Pallet of bits, winches, other items. Notes: Item Location: Hazleton, IA 50641 Equipment Sold "AS IS, WHERE IS": All equipment/property is sold "AS IS, WHERE IS" with no warranty or guarantees, expressed or implied, No operational assessments have been made by DPA Auctions on this item, it has been photographed ONLY.



---

### #296 - Pallet Rope (PZ8817)

Pallet Rope (PZ8817), Pallet of rope, gauges, other items. Notes: Item Location: Hazleton, IA 50641 Equipment Sold "AS IS, WHERE IS": All equipment/property is sold "AS IS, WHERE IS" with no warranty or guarantees, expressed or implied, No operational assessments have been made by DPA Auctions on this item, it has been photographed ONLY.



---

### #297 - Transmission Jack (PZ8818)

Transmission Jack (PZ8818), Transmission jack. Notes: Item Location: Hazleton, IA 50641 Equipment Sold "AS IS, WHERE IS": All equipment/property is sold "AS IS, WHERE IS" with no warranty or guarantees, expressed or implied, No operational assessments have been made by DPA Auctions on this item, it has been photographed ONLY.



---

### #298 - Sunex Transmission Jack (PZ8819)

Sunex Transmission Jack (PZ8819), Sunex model 7700B pedestal transmission jack. Notes: Item Location: Hazleton, IA 50641 Equipment Sold "AS IS, WHERE IS": All equipment/property is sold "AS IS, WHERE IS" with no warranty or guarantees, expressed or implied, No operational assessments have been made by DPA Auctions on this item, it has been photographed ONLY.



---

### #299 - 1991 Fisk LP Tank Mover (PZ8811, Unit T233)

1991 Fisk LP Tank Mover (PZ8811, Unit T233), 1991 Fisk LP tank mover, single axle, ST225/75R15 tires, cable broke, needs battery. Notes: Item Location: Hazleton, IA 50641 Equipment Sold "AS IS, WHERE IS": All equipment/property is sold "AS IS, WHERE IS" with no warranty or guarantees, expressed or implied, No operational assessments have been made by DPA Auctions on this item, it has been photographed ONLY.



---

### #300 - DMI 5250 Toolbar (TR4620)

DMI 5250 Toolbar (TR4620), 16 Knife, 42.5' working width, disc openers, Raven Super Cooler. Notes: Item Location: Irwin, PA 15642 Equipment Sold "AS IS, WHERE IS": All equipment/property is sold "AS IS, WHERE IS" with no warranty or guarantees, expressed or implied, No operational assessments have been made by DPA Auctions on this item, it has been photographed ONLY.



---

### #301 - NH3 Side dress applicator (TR4621)

NH3 Side dress applicator (TR4621), 3 Knife, 15' working width, disc openers, Continental meter. Notes: Item Location: Irwin, PA 15642 Equipment Sold "AS IS, WHERE IS": All equipment/property is sold "AS IS, WHERE IS" with no warranty or guarantees, expressed or implied, No operational assessments have been made by DPA Auctions on this item, it has been photographed ONLY.



---

### #302 - Duo Lift Running Gear (PZ8846)

Duo Lift Running Gear (PZ8846), Duo Lift heavy duty running gear, 5th wheel, steps, 16.5L-16.1 flotation tires. Notes: Item Location: Wilton, IA 52778 Equipment Sold "AS IS, WHERE IS": All equipment/property is sold "AS IS, WHERE IS" with no warranty or guarantees, expressed or implied, No operational assessments have been made by DPA Auctions on this item, it has been photographed ONLY.



---

### #303 - Duo Lift Running Gear (PZ8847)

Duo Lift Running Gear (PZ8847), Duo Lift heavy duty running gear, 5th wheel, steps, 16.5L-16.1 flotation tires. Notes: Item Location: Wilton, IA 52778 Equipment Sold "AS IS, WHERE IS": All equipment/property is sold "AS IS, WHERE IS" with no warranty or guarantees, expressed or implied, No operational assessments have been made by DPA Auctions on this item, it has been photographed ONLY.



---

### #304 - Duo Lift Running Gear (PZ8848)

Duo Lift Running Gear (PZ8848), Duo Lift heavy duty running gear, 5th wheel, steps, 16.5L-16.1 flotation tires. Notes: Item Location: Wilton, IA 52778 Equipment Sold "AS IS, WHERE IS": All equipment/property is sold "AS IS, WHERE IS" with no warranty or guarantees, expressed or implied, No operational assessments have been made by DPA Auctions on this item, it has been photographed ONLY.



---

### #305 - Duo Lift Running Gear (PZ8849)

Duo Lift Running Gear (PZ8849), Duo Lift heavy duty running gear, 5th wheel, steps, 16.5L-16.1 flotation tires. Notes: Item Location: Wilton, IA 52778 Equipment Sold "AS IS, WHERE IS": All equipment/property is sold "AS IS, WHERE IS" with no warranty or guarantees, expressed or implied, No operational assessments have been made by DPA Auctions on this item, it has been photographed ONLY.



---

### #306 - Duo Lift Running Gear (PZ8850)

Duo Lift Running Gear (PZ8850), Duo Lift heavy duty running gear, 5th wheel, steps, 16.5L-16.1 flotation tires. Notes: Item Location: Wilton, IA 52778 Equipment Sold "AS IS, WHERE IS": All equipment/property is sold "AS IS, WHERE IS" with no warranty or guarantees, expressed or implied, No operational assessments have been made by DPA Auctions on this item, it has been photographed ONLY.



---

### #307 - Duo Lift Running Gear (PZ8851)

Duo Lift Running Gear (PZ8851), Duo Lift heavy duty running gear, 5th wheel, steps, 16.5L-16.1 flotation tires. Notes: Item Location: Wilton, IA 52778 Equipment Sold "AS IS, WHERE IS": All equipment/property is sold "AS IS, WHERE IS" with no warranty or guarantees, expressed or implied, No operational assessments have been made by DPA Auctions on this item, it has been photographed ONLY.



---

### #308 - Duo Lift Running Gear (PZ8852)

Duo Lift Running Gear (PZ8852), Duo Lift heavy duty running gear, 5th wheel, steps, 16.5L-16.1 flotation tires. Notes: Item Location: Wilton, IA 52778 Equipment Sold "AS IS, WHERE IS": All equipment/property is sold "AS IS, WHERE IS" with no warranty or guarantees, expressed or implied, No operational assessments have been made by DPA Auctions on this item, it has been photographed ONLY.



---

### #309 - Duo Lift Running Gear (PZ8853)

Duo Lift Running Gear (PZ8853), Duo Lift heavy duty running gear, 5th wheel, steps, 16.5L-16.1 flotation tires. Notes: Item Location: Wilton, IA 52778 Equipment Sold "AS IS, WHERE IS": All equipment/property is sold "AS IS, WHERE IS" with no warranty or guarantees, expressed or implied, No operational assessments have been made by DPA Auctions on this item, it has been photographed ONLY.



---

### #310 - Duo Lift Running Gear (PZ8854)

Duo Lift Running Gear (PZ8854), Duo Lift heavy duty running gear, 5th wheel, steps, 16.5L-16.1 flotation tires. Notes: Item Location: Wilton, IA 52778 Equipment Sold "AS IS, WHERE IS": All equipment/property is sold "AS IS, WHERE IS" with no warranty or guarantees, expressed or implied, No operational assessments have been made by DPA Auctions on this item, it has been photographed ONLY.



---

### #311 - Duo Lift Running Gear (PZ8855)

Duo Lift Running Gear (PZ8855), Duo Lift heavy duty running gear, 5th wheel, steps, 16.5L-16.1 flotation tires. Notes: Item Location: Wilton, IA 52778 Equipment Sold "AS IS, WHERE IS": All equipment/property is sold "AS IS, WHERE IS" with no warranty or guarantees, expressed or implied, No operational assessments have been made by DPA Auctions on this item, it has been photographed ONLY.



---

### #312 - Duo Lift Running Gear (PZ8856)

Duo Lift Running Gear (PZ8856), Duo Lift heavy duty running gear, 5th wheel, steps, 16.5L-16.1 flotation tires. Notes: Item Location: Wilton, IA 52778 Equipment Sold "AS IS, WHERE IS": All equipment/property is sold "AS IS, WHERE IS" with no warranty or guarantees, expressed or implied, No operational assessments have been made by DPA Auctions on this item, it has been photographed ONLY.



---

### #313 - Duo Lift Running Gear (PZ8857)

Duo Lift Running Gear (PZ8857), Duo Lift heavy duty running gear, 5th wheel, steps, 16.5L-16.1 flotation tires. Notes: Item Location: Wilton, IA 52778 Equipment Sold "AS IS, WHERE IS": All equipment/property is sold "AS IS, WHERE IS" with no warranty or guarantees, expressed or implied, No operational assessments have been made by DPA Auctions on this item, it has been photographed ONLY.



---

### #314 - Duo Lift Running Gear (PZ8858)

Duo Lift Running Gear (PZ8858), Duo Lift heavy duty running gear, 5th wheel, steps, 16.5L-16.1 flotation tires. Notes: Item Location: Wilton, IA 52778 Equipment Sold "AS IS, WHERE IS": All equipment/property is sold "AS IS, WHERE IS" with no warranty or guarantees, expressed or implied, No operational assessments have been made by DPA Auctions on this item, it has been photographed ONLY.



---

### #315 - NH3 Compressors (PZ8868)

NH3 Compressors (PZ8868), NH3 compressors, pipe. Notes: Item Location: Clarence, IA 52216 Equipment Sold "AS IS, WHERE IS": All equipment/property is sold "AS IS, WHERE IS" with no warranty or guarantees, expressed or implied, No operational assessments have been made by DPA Auctions on this item, it has been photographed ONLY.



---

### #316 - Truck Tires (PZ8870)

Truck Tires (PZ8870), 4 - Firestone 285/75R24.5 14PR tires, aluminum rims. Notes: Item Location: Clarence, IA 52216 Equipment Sold "AS IS, WHERE IS": All equipment/property is sold "AS IS, WHERE IS" with no warranty or guarantees, expressed or implied, No operational assessments have been made by DPA Auctions on this item, it has been photographed ONLY.



---

### #317 - Truck Tires (PZ8871)

Truck Tires (PZ8871), 4 - Hercules 285/75R24.5 tires, aluminum rims. Notes: Item Location: Clarence, IA 52216 Equipment Sold "AS IS, WHERE IS": All equipment/property is sold "AS IS, WHERE IS" with no warranty or guarantees, expressed or implied, No operational assessments have been made by DPA Auctions on this item, it has been photographed ONLY.



---

### #318 - Truck Tire (PZ8872)

Truck Tire (PZ8872), Samson 285/75R24.5 tire, aluminum rim. Notes: Item Location: Clarence, IA 52216 Equipment Sold "AS IS, WHERE IS": All equipment/property is sold "AS IS, WHERE IS" with no warranty or guarantees, expressed or implied, No operational assessments have been made by DPA Auctions on this item, it has been photographed ONLY.



---

### #319 - Rim (PZ8873)

Rim (PZ8873), 1 - Aluminum rim. Notes: Item Location: Clarence, IA 52216 Equipment Sold "AS IS, WHERE IS": All equipment/property is sold "AS IS, WHERE IS" with no warranty or guarantees, expressed or implied, No operational assessments have been made by DPA Auctions on this item, it has been photographed ONLY.



---

### #320 - Rims (PZ8875)

Rims (PZ8875), 17 - 24" aluminum rims. Notes: Item Location: Clarence, IA 52216 Equipment Sold "AS IS, WHERE IS": All equipment/property is sold "AS IS, WHERE IS" with no warranty or guarantees, expressed or implied, No operational assessments have been made by DPA Auctions on this item, it has been photographed ONLY.



---

### #321 - Electric Motors (PZ8862)

Electric Motors (PZ8862). Pallet of electric motors. Notes: Please contact seller for working condition. Item Location: Clarence, IA 52216 Equipment Sold "AS IS, WHERE IS": All equipment/property is sold "AS IS, WHERE IS" with no warranty or guarantees, expressed or implied, No operational assessments have been made by DPA Auctions on this item, it has been photographed ONLY.



---

### #322 - Steel Racking Parts (PZ8863)

Steel Racking Parts (PZ8863), Pallet of steel racking parts. Notes: Item Location: Clarence, IA 52216 Equipment Sold "AS IS, WHERE IS": All equipment/property is sold "AS IS, WHERE IS" with no warranty or guarantees, expressed or implied, No operational assessments have been made by DPA Auctions on this item, it has been photographed ONLY.



---

### #323 - 5th Wheel (PZ8864)

5th Wheel (PZ8864), 5th wheel plate. Notes: Item Location: Clarence, IA 52216 Equipment Sold "AS IS, WHERE IS": All equipment/property is sold "AS IS, WHERE IS" with no warranty or guarantees, expressed or implied, No operational assessments have been made by DPA Auctions on this item, it has been photographed ONLY.





---

### #324 - Stainless Steel Tanks (PZ8865)

Stainless Steel Tanks (PZ8865), 2 - stainless steel tanks. Notes: Item Location: Clarence, IA 52216 Equipment Sold "AS IS, WHERE IS": All equipment/property is sold "AS IS, WHERE IS" with no warranty or guarantees, expressed or implied, No operational assessments have been made by DPA Auctions on this item, it has been photographed ONLY.



---

### #325 - Cat Engine (PZ8866)

Cat Engine (PZ8866), Cat 3208 diesel engine. Notes: Core should be good. Item Location: Clarence, IA 52216 Equipment Sold "AS IS, WHERE IS": All equipment/property is sold "AS IS, WHERE IS" with no warranty or guarantees, expressed or implied, No operational assessments have been made by DPA Auctions on this item, it has been photographed ONLY.



---

### #326 - Wet Kit Reservoir (PZ8867)

Wet Kit Reservoir (PZ8867), Wet kit reservoir. Notes: Item Location: Clarence, IA 52216 Equipment Sold "AS IS, WHERE IS": All equipment/property is sold "AS IS, WHERE IS" with no warranty or guarantees, expressed or implied, No operational assessments have been made by DPA Auctions on this item, it has been photographed ONLY.



---

### #327 - Basket (PZ8869)

Basket (PZ8869), Basket for lift. Notes: Item Location: Clarence, IA 52216 Equipment Sold "AS IS, WHERE IS": All equipment/property is sold "AS IS, WHERE IS" with no warranty or guarantees, expressed or implied, No operational assessments have been made by DPA Auctions on this item, it has been photographed ONLY.



---

### #328 - Willmar Dry Spreader (PZ8941)

Willmar Dry Spreader (PZ8941), Willmar Super 800 dry spreader, twin spinner, PTO, tandem axle, 19L-16.1 SL flotation tires. Notes: Item Location: Grinnell, IA 50112 Equipment Sold "AS IS, WHERE IS": All equipment/property is sold "AS IS, WHERE IS" with no warranty or guarantees, expressed or implied, No operational assessments have been made by DPA Auctions on this item, it has been photographed ONLY.



---

### #329 - IHC 584 Tractor (PZ8943)

IHC 584 Tractor (PZ8943), IHC 584 wide front tractor, diesel engine, lights, PTO, 2 port hydraulics, 9.5L-15 front tires, 16.9-30 rear tires. Notes: Excellent tractor. Item Location: Grinnell, IA 50112 Equipment Sold "AS IS, WHERE IS": All equipment/property is sold "AS IS, WHERE IS" with no warranty or guarantees, expressed or implied, No operational assessments have been made by DPA Auctions on this item, it has been photographed ONLY.



---

### #330 - Big A Parts (PZ8942)

Big A Parts (PZ8942), Big A floater parts, sprayer tips, lights, stainless steel chemical & poly inductor. Notes: Item Location: Grinnell, IA 50112 Equipment Sold "AS IS, WHERE IS": All equipment/property is sold "AS IS, WHERE IS" with no warranty or guarantees, expressed or implied, No operational assessments have been made by DPA Auctions on this item, it has been photographed ONLY.



---

### #331 - Liquid Storage Tank (PZ8888)

Liquid Storage Tank (PZ8888), 1500 gallon poly cone bottom tank, stands. Notes: This tank must be removed by July 10th, 2018 with NO exceptions. Dismantle, removal and transportation is at the expense, risk and liability of the buyer. Item Location: Miles, IA 52064 Equipment Sold "AS IS, WHERE IS": All equipment/property is sold "AS IS, WHERE IS" with no warranty or guarantees, expressed or implied, No operational assessments have been made by DPA Auctions on this item, it has been photographed ONLY.



---

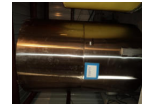
### #332 - Liquid Storage Tank (PZ8889)

Liquid Storage Tank (PZ8889), 1500 gallon poly cone bottom tank, stands. Notes: This tank must be removed by July 10th, 2018 with NO exceptions. Dismantle, removal and transportation is at the expense, risk and liability of the buyer. Item Location: Miles, IA 52064 Equipment Sold "AS IS, WHERE IS": All equipment/property is sold "AS IS, WHERE IS" with no warranty or guarantees, expressed or implied, No operational assessments have been made by DPA Auctions on this item, it has been photographed ONLY.



### #333 - Friesen Liquid Storage Tank (PZ8890)

Friesen Liquid Storage Tank (PZ8890), Friesen 1000 gallon vertical stainless steel liquid tank, stainless steel legs. Notes: This tank must be removed by July 10th, 2018 with NO exceptions. Dismantle, removal and transportation is at the expense, risk and liability of the buyer. Item Location: Miles, IA 52064 Equipment Sold "AS IS, WHERE IS": All equipment/property is sold "AS IS, WHERE IS" with no warranty or guarantees, expressed or implied, No operational assessments have been made by DPA Auctions on this item, it has been photographed ONLY.



### #334 - Pump/Motor (PZ8891)

Pump/Motor (PZ8891), Baldor 5 hp electric motor, Scot pump. Notes: Item Location: Miles, IA 52064 Equipment Sold "AS IS, WHERE IS": All equipment/property is sold "AS IS, WHERE IS" with no warranty or guarantees, expressed or implied, No operational assessments have been made by DPA Auctions on this item, it has been photographed ONLY.



### #335 - Pump/Motor (PZ8892)

Pump/Motor (PZ8892), Baldor 5 hp electric motor, MP pump. Notes: Item Location: Miles, IA 52064 Equipment Sold "AS IS, WHERE IS": All equipment/property is sold "AS IS, WHERE IS" with no warranty or guarantees, expressed or implied, No operational assessments have been made by DPA Auctions on this item, it has been photographed ONLY.



### #336 - Pump/Motor (PZ8893)

Pump/Motor (PZ8893), Baldor 5 hp electric motor, pump. Notes: Item Location: Miles, IA 52064 Equipment Sold "AS IS, WHERE IS": All equipment/property is sold "AS IS, WHERE IS" with no warranty or guarantees, expressed or implied, No operational assessments have been made by DPA Auctions on this item, it has been photographed ONLY.



### #337 - Running Gear (PZ8883)

Running Gear (PZ8883), Running gear, 5th wheel, 11L-15 flotation tires. Notes: Item Location: Maquoketa, IA 52060 Equipment Sold "AS IS, WHERE IS": All equipment/property is sold "AS IS, WHERE IS" with no warranty or guarantees, expressed or implied, No operational assessments have been made by DPA Auctions on this item, it has been photographed ONLY.



### #338 - Running Gear (PZ8884)

Running Gear (PZ8884), Running gear, 5th wheel, 11L-15 flotation tires. Notes: Item Location: Maquoketa, IA 52060 Equipment Sold "AS IS, WHERE IS": All equipment/property is sold "AS IS, WHERE IS" with no warranty or guarantees, expressed or implied, No operational assessments have been made by DPA Auctions on this item, it has been photographed ONLY.



### #339 - Running Gear (PZ8885)

Running Gear (PZ8885), Running gear, 5th wheel, 11L-15 flotation tires. Notes: No tongue. Item Location: Maquoketa, IA 52060 Equipment Sold "AS IS, WHERE IS": All equipment/property is sold "AS IS, WHERE IS" with no warranty or guarantees, expressed or implied, No operational assessments have been made by DPA Auctions on this item, it has been photographed ONLY.



### #340 - Running Gear (PZ8886)

Running Gear (PZ8886), Running gear, 5th wheel, 11L-15 flotation tires. Notes: No tongue. Item Location: Maquoketa, IA 52060 Equipment Sold "AS IS, WHERE IS": All equipment/property is sold "AS IS, WHERE IS" with no warranty or guarantees, expressed or implied, No operational assessments have been made by DPA Auctions on this item, it has been photographed ONLY.



### #341 - Running Gear (PZ8887)

Running Gear (PZ8887), Running gear, 5th wheel, 11L-15 flotation tires. Notes: Item Location: Maquoketa, IA 52060 Equipment Sold "AS IS, WHERE IS": All equipment/property is sold "AS IS, WHERE IS" with no warranty or guarantees, expressed or implied, No operational assessments have been made by DPA Auctions on this item, it has been photographed ONLY.



### #342 - Weigh Wagon (PZ8882, Unit T527)

Weigh Wagon (PZ8882, Unit T527), Weigh wagon, side discharge auger, Briggs & Stratton 18 gas engine, Digi-Star EZ 2000 digital scale, 7.50-16LT tires. Notes: Item Location: Maquoketa, IA 52060 Equipment Sold "AS IS, WHERE IS": All equipment/property is sold "AS IS, WHERE IS" with no warranty or guarantees, expressed or implied, No operational assessments have been made by DPA Auctions on this item, it has been photographed ONLY.



---

**#343 - Disk Sealers (7) (TH243)**

Disk Sealers (7) (TH243), seven disc sealers. Notes: Item Location: Sterling, IL 61081 Equipment Sold "AS IS, WHERE IS": All equipment/property is sold "AS IS, WHERE IS" with no warranty or guarantees, expressed or implied, No operational assessments have been made by DPA Auctions on this item, it has been photographed ONLY.



---

**#344 - DMI Spring Sealers (6) (TH235)**

DMI Spring Sealers (6) (TH235), Six DMI spring sealers. Notes: Item Location: Sterling, IL 61081 Equipment Sold "AS IS, WHERE IS": All equipment/property is sold "AS IS, WHERE IS" with no warranty or guarantees, expressed or implied, No operational assessments have been made by DPA Auctions on this item, it has been photographed ONLY.



---

**#345 - DMI Spring Sealers (5) (TH236)**

DMI Spring Sealers (5) (TH236), Five DMI spring sealers. Notes: Item Location: Sterling, IL 61081 Equipment Sold "AS IS, WHERE IS": All equipment/property is sold "AS IS, WHERE IS" with no warranty or guarantees, expressed or implied, No operational assessments have been made by DPA Auctions on this item, it has been photographed ONLY.



---

**#346 - DMI 20" Coulters (5) (TH237)**

DMI 20" Coulters (5) (TH237), Five 20" DMI coulters. Notes: Item Location: Sterling, IL 61081 Equipment Sold "AS IS, WHERE IS": All equipment/property is sold "AS IS, WHERE IS" with no warranty or guarantees, expressed or implied, No operational assessments have been made by DPA Auctions on this item, it has been photographed ONLY.



---

**#347 - DMI 20" Coulters (6) (TH238)**

DMI 20" Coulters (6) (TH238), Six 20" DMI Coulters. Notes: Item Location: Sterling, IL 61081 Equipment Sold "AS IS, WHERE IS": All equipment/property is sold "AS IS, WHERE IS" with no warranty or guarantees, expressed or implied, No operational assessments have been made by DPA Auctions on this item, it has been photographed ONLY.



---

**#348 - NH3 Shanks And Knives (11) (TH239)**

NH3 Shanks And Knives (11) (TH239), 11 NH3 shanks and knives. Notes: Item Location: Sterling, IL 61081 Equipment Sold "AS IS, WHERE IS": All equipment/property is sold "AS IS, WHERE IS" with no warranty or guarantees, expressed or implied, No operational assessments have been made by DPA Auctions on this item, it has been photographed ONLY.



---

**#349 - NH3 Knives (11) (TH240)**

NH3 Knives (11) (TH240), 11 3/8 NH3 knives. Notes: Item Location: Sterling, IL 61081 Equipment Sold "AS IS, WHERE IS": All equipment/property is sold "AS IS, WHERE IS" with no warranty or guarantees, expressed or implied, No operational assessments have been made by DPA Auctions on this item, it has been photographed ONLY.



---

**#350 - 20" Yetter Coulters (5) (TH241)**

20" Yetter Coulters (5) (TH241), five 20" Yetter coulters. Notes: Item Location: Sterling, IL 61081 Equipment Sold "AS IS, WHERE IS": All equipment/property is sold "AS IS, WHERE IS" with no warranty or guarantees, expressed or implied, No operational assessments have been made by DPA Auctions on this item, it has been photographed ONLY.



---

**#351 - 20" Yetter Coulters (6) (TH242)**

20" Yetter Coulters (6) (TH242), Six 20" Yetter coulters. Notes: Item Location: Sterling, IL 61081 Equipment Sold "AS IS, WHERE IS": All equipment/property is sold "AS IS, WHERE IS" with no warranty or guarantees, expressed or implied, No operational assessments have been made by DPA Auctions on this item, it has been photographed ONLY.



---

**#352 - Vermeer 1850 Trencher (TH247)**

Vermeer 1850 Trencher (TH247), Works good, has a new drive sprocket. Notes: Item Location: Sterling, IL 61081 Equipment Sold "AS IS, WHERE IS": All equipment/property is sold "AS IS, WHERE IS" with no warranty or guarantees, expressed or implied, No operational assessments have been made by DPA Auctions on this item, it has been photographed ONLY.



---

### #353 - Case IH 5300 NH3 Bar (ED487)

Case IH 5300 NH3 Bar (ED487), 15 knife, 30" spacing, 3 point mounted, no-till coulters, heavy duty spring loaded shanks, easy hookup hitch, gauge wheels, lights, Raven Accu-flow (older than bar by a few years but works good), like new, less than 200 acres of use, always stored inside until last month, field ready. Notes: Item Location: Olney, IL 62450 Equipment Sold "AS IS, WHERE IS": All equipment/property is sold "AS IS, WHERE IS" with no warranty or guarantees, expressed or implied, No operational assessments have been made by DPA Auctions on this item, it has been photographed ONLY.



---

### #354 - Redball 680 Sprayer (PD708)

Redball 680 Sprayer (PD708), 1600 gallon tanks, 100 foot booms, six shut offs, Raven 460 Monitor, adjustable axles. Notes: Item Location: Saint Ansgar, IA 50472 Equipment Sold "AS IS, WHERE IS": All equipment/property is sold "AS IS, WHERE IS" with no warranty or guarantees, expressed or implied, No operational assessments have been made by DPA Auctions on this item, it has been photographed ONLY.



---

### #355 - 1970's Warehouse Air Conditioner Unit (AL291)

1970's Warehouse Air Conditioner Unit (AL291), 2 new compressors put in 10 years ago. Notes: Item Location: Traer, IA 50675 Equipment Sold "AS IS, WHERE IS": All equipment/property is sold "AS IS, WHERE IS" with no warranty or guarantees, expressed or implied, No operational assessments have been made by DPA Auctions on this item, it has been photographed ONLY.



---

### #356 - Four (4) Case IH Combine Final Drives (MH263)

Four (4) Case IH Combine Final Drives (MH263), 4 final drives, 2 left, 2 right. Notes: Came off Case IH combine. Item Location: Tyro, KS 67364 Equipment Sold "AS IS, WHERE IS": All equipment/property is sold "AS IS, WHERE IS" with no warranty or guarantees, expressed or implied, No operational assessments have been made by DPA Auctions on this item, it has been photographed ONLY.



---

### #357 - Rear Combine Hydraulic 4WD Axle (MH261)

Rear Combine Hydraulic 4WD Axle (MH261), heavy duty Mud Hog 4 wheel drive unit, fits 2388 down to 1460 Case IH, sellers believes with the right hardware this could be put on a John Deere. Notes: Seller took this off a Case IH combine. Item Location: Tyro, KS 67364 Equipment Sold "AS IS, WHERE IS": All equipment/property is sold "AS IS, WHERE IS" with no warranty or guarantees, expressed or implied, No operational assessments have been made by DPA Auctions on this item, it has been photographed ONLY.



---

### #358 - John Deere Corn Head Gathering Chains (MH259)

John Deere Corn Head Gathering Chains (MH259), corn head gather chains for John Deere header. Notes: Item Location: Tyro, KS 67364 Equipment Sold "AS IS, WHERE IS": All equipment/property is sold "AS IS, WHERE IS" with no warranty or guarantees, expressed or implied, No operational assessments have been made by DPA Auctions on this item, it has been photographed ONLY.



---

### #359 - Set of 30.5Lx32 Tires (MH257)

Set of 30.5Lx32 Tires (MH257), came off Case IH. Notes: Item Location: Tyro, KS 67364 Equipment Sold "AS IS, WHERE IS": All equipment/property is sold "AS IS, WHERE IS" with no warranty or guarantees, expressed or implied, No operational assessments have been made by DPA Auctions on this item, it has been photographed ONLY.



---

### #360 - Set of 28Lx26 Tires (MH258)

Set of 28Lx26 Tires (MH258), came off Case IH. Notes: Item Location: Tyro, KS 67364 Equipment Sold "AS IS, WHERE IS": All equipment/property is sold "AS IS, WHERE IS" with no warranty or guarantees, expressed or implied, No operational assessments have been made by DPA Auctions on this item, it has been photographed ONLY.



---

### #361 - Snap and Rollers and Sprockets (MH260)

Snap and Rollers and Sprockets (MH260), fits the 93 and the 43 series. Notes: Item Location: Tyro, KS 67364 Equipment Sold "AS IS, WHERE IS": All equipment/property is sold "AS IS, WHERE IS" with no warranty or guarantees, expressed or implied, No operational assessments have been made by DPA Auctions on this item, it has been photographed ONLY.





---

### #362 - Grove 60 Foot Crane (PD711)

Grove 60 Foot Crane (PD711), 60 foot boom, 20 foot jib, gas engine, everything works, needs new brakes. Notes: Item Location: Baring, MO 63531 Equipment Sold "AS IS, WHERE IS": All equipment/property is sold "AS IS, WHERE IS" with no warranty or guarantees, expressed or implied, No operational assessments have been made by DPA Auctions on this item, it has been photographed ONLY.



---

### #363 - Sudenga Field Loader (ED483)

Sudenga Field Loader (ED483), portable field fertilizer under truck loader, hydraulic drive, bottom end replaced recently, comes with another new replacement bottom end, under truck conveyor all new from Sudenga as well, ready to go. Notes: Item Location: Bellevue, IA 52031 Equipment Sold "AS IS, WHERE IS": All equipment/property is sold "AS IS, WHERE IS" with no warranty or guarantees, expressed or implied, No operational assessments have been made by DPA Auctions on this item, it has been photographed ONLY.



---

### #364 - Green Kraus Conveyor (ED484)

Green Kraus Conveyor (ED484), 32 foot fertilizer conveyor, electric motor drive, stainless steel, heavy duty adjustable truck. Notes: Item Location: Bellevue, IA 52031 Equipment Sold "AS IS, WHERE IS": All equipment/property is sold "AS IS, WHERE IS" with no warranty or guarantees, expressed or implied, No operational assessments have been made by DPA Auctions on this item, it has been photographed ONLY.



---

### #365 - Silver Kraus Conveyor (ED485)

Silver Kraus Conveyor (ED485), stainless steel fertilizer conveyor, new rollers recently, no motor. Notes: Item Location: Bellevue, IA 52031 Equipment Sold "AS IS, WHERE IS": All equipment/property is sold "AS IS, WHERE IS" with no warranty or guarantees, expressed or implied, No operational assessments have been made by DPA Auctions on this item, it has been photographed ONLY.



---

### #366 - Little Kraus Conveyor (ED486)

Little Kraus Conveyor (ED486), stainless steel fertilizer conveyor, new rollers recently, 3HP motor. Notes: Item Location: Bellevue, IA 52031 Equipment Sold "AS IS, WHERE IS": All equipment/property is sold "AS IS, WHERE IS" with no warranty or guarantees, expressed or implied, No operational assessments have been made by DPA Auctions on this item, it has been photographed ONLY.



---

### #367 - 26 Foot Ray-Man Conveyor (ED477)

26 Foot Ray-Man Conveyor (ED477), 10" belt, 3HP motor, all enclosed, cable crank by hand to raise, Model SC10X2. Notes: Item Location: Edelstein, IL 61526 Equipment Sold "AS IS, WHERE IS": All equipment/property is sold "AS IS, WHERE IS" with no warranty or guarantees, expressed or implied, No operational assessments have been made by DPA Auctions on this item, it has been photographed ONLY.



---

### #368 - 78 Foot Belt Conveyor (ED475)

78 Foot Belt Conveyor (ED475), 3 phase, 20 HP motor, 16" wide belt. Notes: Item Location: Glasford, IL 61533 Equipment Sold "AS IS, WHERE IS": All equipment/property is sold "AS IS, WHERE IS" with no warranty or guarantees, expressed or implied, No operational assessments have been made by DPA Auctions on this item, it has been photographed ONLY.



---

### #369 - 50 Foot Stainless Steel R & R Horizontal Fertilizer Conveyor (ED476)

50 Foot Stainless Steel R & R Horizontal Fertilizer Conveyor (ED476), drive shaft to drive drum needs fixed, belt is not included. Notes: Belt is NOT included with unit. Item Location: Edelstein, IL 61526 Equipment Sold "AS IS, WHERE IS": All equipment/property is sold "AS IS, WHERE IS" with no warranty or guarantees, expressed or implied, No operational assessments have been made by DPA Auctions on this item, it has been photographed ONLY.



---

### #370 - 2006 International 4400 Tandem Truck (ED474)

2006 International 4400 Tandem Truck (ED474), DT570 diesel engine, Eaton-Fuller 10 speed manual transmission with good clutch, Heat/A/C, AM/FM radio, cruise control, auto locks, 2013 Pamco 3 compartment feed box, 12R-22.5 steer tires (40%), 11R-22.5 drive tires (30%), Wet kit with hydraulic PTO to power box, air brakes, mechanically sound and fully operational, shows 275,151 miles. Notes: Item Location: Glasford, IL 61533 Equipment Sold "AS IS, WHERE IS": All equipment/property is sold "AS IS, WHERE IS" with no warranty or guarantees, expressed or implied, No operational assessments have been made by DPA Auctions on this item, it has been photographed ONLY.



### #372 - 2007 Airmax 180 70 Foot VRT Compatible Raven Fast Valve (ED490)

2007 Airmax 180 70 Foot VRT Compatible Raven Fast Valve (ED490), 2 chain, new deflectors, new bearings, new electric tarp, motor, field ready, raven control came off very low houred 1274c, very good condition. Notes: Item Location: Bowen, IL 62316 Equipment Sold "AS IS, WHERE IS": All equipment/property is sold "AS IS, WHERE IS" with no warranty or guarantees, expressed or implied, No operational assessments have been made by DPA Auctions on this item, it has been photographed ONLY.



### #373 - Set of 4 Continental 650/65/38 Tires & Wheels (ED491)

Set of 4 Continental 650/65/38 Tires & Wheels (ED491), off of late model ag chem sprayer, will fit Case sprayer, very good condition, 85%, 11 inch hub. Notes: Item Location: Bowen, IL 62316 Equipment Sold "AS IS, WHERE IS": All equipment/property is sold "AS IS, WHERE IS" with no warranty or guarantees, expressed or implied, No operational assessments have been made by DPA Auctions on this item, it has been photographed ONLY.



### #374 - 2010 Case IH 1250 16R30 Planter (PD713)

2010 Case IH 1250 16R30 Planter (PD713), field ready, Pneumatic Down Pressure, Advanced seed meters, row markers, seed tubes with Smart sensors, variable rate, 22 GPM PTO pump, floating no-till residue managers, bulk fill seed delivery system, AFS Pro 600. Notes: Item Location: Missouri Valley, IA 51555 Equipment Sold "AS IS, WHERE IS": All equipment/property is sold "AS IS, WHERE IS" with no warranty or guarantees, expressed or implied, No operational assessments have been made by DPA Auctions on this item, it has been photographed ONLY.



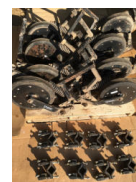
### #375 - 2007 Case IH 1200 12/23 Planter (PD704)

2007 Case IH 1200 12/23 Planter (PD704), Pivot transport planter, bulk-fill system, 36 GPM PTO pump, 7.9L-15 gauge wheels, will work with AFS Pro 600 or Pro 700 monitor (not included), 4 hydraulic drives, split-row, vacuum, pull type, firming points and disc openers ok, spring down pressure, markers, will need new seed tube hoses due to cracking, chains will need soaked, pump mounting bracket, no seed discs. Notes: Item Location: Missouri Valley, IA 51555 Equipment Sold "AS IS, WHERE IS": All equipment/property is sold "AS IS, WHERE IS" with no warranty or guarantees, expressed or implied, No operational assessments have been made by DPA Auctions on this item, it has been photographed ONLY.



### #376 - (8) Eight Yetter Viper 3000 Fertilizer Openers (AL297)

(8) Eight Yetter Viper 3000 Fertilizer Openers (AL297), heavy duty and can set them to place fertilizer up to 3 1/2" deep, very uniform placement since has a gauge wheel, will bolt to several toolbars whether it's a planter side or a side dress applicator, currently have dry fertilizer shoe but can be converted to liquid fertilizer, included are diamond bar mounting brackets. Notes: Item Location: Postville, IA 52162 Equipment Sold "AS IS, WHERE IS": All equipment/property is sold "AS IS, WHERE IS" with no warranty or guarantees, expressed or implied, No operational assessments have been made by DPA Auctions on this item, it has been photographed ONLY.



### #377 - Kubota GL 6500S Low Boy Diesel Generator (ED482)

Kubota GL 6500S Low Boy Diesel Generator (ED482), liquid cooled 2 cylinder diesel engine, glow plugs, 120 or 120/240 operation, single phase, auto-idle feature, low hours, used as a back up generator. Notes: Item Location: Edelstein, IL 61526 Equipment Sold "AS IS, WHERE IS": All equipment/property is sold "AS IS, WHERE IS" with no warranty or guarantees, expressed or implied, No operational assessments have been made by DPA Auctions on this item, it has been photographed ONLY.



### #378 - 1985 John Deere 845 Cultivator (AL292)

1985 John Deere 845 Cultivator (AL292), 12 row, hydraulic flat fold, 3 point. Notes: Item Location: Aplington, IA 50604 Equipment Sold "AS IS, WHERE IS": All equipment/property is sold "AS IS, WHERE IS" with no warranty or guarantees, expressed or implied, No operational assessments have been made by DPA Auctions on this item, it has been photographed ONLY.



### #379 - John Deere 960 Field Cultivator (AL293)

John Deere 960 Field Cultivator (AL293), 28', set up to side dress anhydrous, hoses taken off and wheel taken off, one tire is getting fix, drag is in very good condition. Notes: Item Location: Aplington, IA 50604 Equipment Sold "AS IS, WHERE IS": All equipment/property is sold "AS IS, WHERE IS" with no warranty or guarantees, expressed or implied, No operational assessments have been made by DPA Auctions on this item, it has been photographed ONLY.



### #380 - Sunflower 6331-22 Soil Finisher (TH233)

Sunflower 6331-22 Soil Finisher (TH233), 22 ft. hydraulic fold, 4 bar rake, walking tandems on wings and main frame, tires are in good condition, 2 cylinders have been rebuilt. Notes: Unit is in good overall condition. Item Location: Central City, IA 52214 Equipment Sold "AS IS, WHERE IS": All equipment/property is sold "AS IS, WHERE IS" with no warranty or guarantees, expressed or implied, No operational assessments have been made by DPA Auctions on this item, it has been photographed ONLY.



### #381 - Mitas SFT Floater Tires & Rims (DL232)

Mitas SFT Floater Tires & Rims (DL232), 1250/50R32 floater tires and rims, off CIH 7230 combine, fits most combines or grain carts, no stubble damage, excellent condition. Notes: Item Location: Macomb, IL 61455 Equipment Sold "AS IS, WHERE IS": All equipment/property is sold "AS IS, WHERE IS" with no warranty or guarantees, expressed or implied, No operational assessments have been made by DPA Auctions on this item, it has been photographed ONLY.



### #382 - IH McCormick Farmall B Tractor W/ Woods Mower (KMK366)

IH McCormick Farmall B Tractor W/ Woods Mower (KMK366), Culti-Vision B, 4 cylinder gas engine, 4 speed manual transmission, narrow front, 540 pto, 9 - 24 rear tires, Woods L306 belly mower, model L306-U-1, ID number 518902. Notes: Original Paint. Starts and Runs Good. Item Location: Mondamin, IA 51557 Equipment Sold "AS IS, WHERE IS": All equipment/property is sold "AS IS, WHERE IS" with no warranty or guarantees, expressed or implied, No operational assessments have been made by DPA Auctions on this item, it has been photographed ONLY.



### #383 - Allis Chalmers C Tractor W/ Woods Mower (KMK367)

Allis Chalmers C Tractor W/ Woods Mower (KMK367), gas engine, 3 speed manual transmission, pto., narrow front, 5.00 - 15 front tires, 11.2 - 24 rear tires, both sets in like new condition, Woods belly mower, model L306. Notes: Original Paint. Doesn't use any oil and easy to start. Runs Good. Item Location: Mondamin, IA 51557 Equipment Sold "AS IS, WHERE IS": All equipment/property is sold "AS IS, WHERE IS" with no warranty or guarantees, expressed or implied, No operational assessments have been made by DPA Auctions on this item, it has been photographed ONLY.



### #384 - (2) Two Sets Of TeJet Liquid Fertilizer Attachments (AL301)

(2) Two Sets Of TeJet Liquid Fertilizer Attachments (AL301), Hoses and wiring harness. Notes: Item Location: Webster, IA 52355 Equipment Sold "AS IS, WHERE IS": All equipment/property is sold "AS IS, WHERE IS" with no warranty or guarantees, expressed or implied, No operational assessments have been made by DPA Auctions on this item, it has been photographed ONLY.



### #385 - 2006 MSA 300 Spread Master (AL303)

2006 MSA 300 Spread Master (AL303), diesel engine, direct drive transmission, am/FM radio, AC and heat, raven monitor, raven smartrax GPS, New Leader L-3020 stainless G4 box, belt over chain, variable rate twin spreading fans, air ride suspension, 380-85R46 Row Crop Tires, new fuel tank and belt, has military axles, new transmission, new spread sensor, shows 3552 hours. Notes: Item Location: Webster, IA 52355 Equipment Sold "AS IS, WHERE IS": All equipment/property is sold "AS IS, WHERE IS" with no warranty or guarantees, expressed or implied, No operational assessments have been made by DPA Auctions on this item, it has been photographed ONLY.



### #386 - Grousers for a Caterpillar D6R (AL304)

Grousers for a Caterpillar D6R (AL304), 20", a whole set, has enough pads for two rails, has interlocking connection grousers. Notes: Item Location: Webster, IA 52355 Equipment Sold "AS IS, WHERE IS": All equipment/property is sold "AS IS, WHERE IS" with no warranty or guarantees, expressed or implied, No operational assessments have been made by DPA Auctions on this item, it has been photographed ONLY.



### #387 - (2) Two 500 Gallon Poly Saddle Tanks (AL299)

(2) Two 500 Gallon Poly Saddle Tanks (AL299), brackets and mounts fits 9020T Series Tractors. Notes: Item Location: Webster, IA 52355 Equipment Sold "AS IS, WHERE IS": All equipment/property is sold "AS IS, WHERE IS" with no warranty or guarantees, expressed or implied, No operational assessments have been made by DPA Auctions on this item, it has been photographed ONLY.



---

### #388 - 36 Row Amvac Smart Boxes (AL300)

36 Row Amvac Smart Boxes (AL300), controller and wiring harness. Notes: Item Location: Webster, IA 52355 Equipment Sold "AS IS, WHERE IS": All equipment/property is sold "AS IS, WHERE IS" with no warranty or guarantees, expressed or implied, No operational assessments have been made by DPA Auctions on this item, it has been photographed ONLY.



---

### #389 - Advanced Model HR 2000 Riding Floor Cleaner (AL302)

Advanced Model HR 2000 Riding Floor Cleaner (AL302), self propelled, bushes, wet vac, non-skid tires. Notes: Batteries need replaced. Item Location: Webster, IA 52355 Equipment Sold "AS IS, WHERE IS": All equipment/property is sold "AS IS, WHERE IS" with no warranty or guarantees, expressed or implied, No operational assessments have been made by DPA Auctions on this item, it has been photographed ONLY.



---

### #390 - 650/65R38 Michelin Floater Tires (AL305)

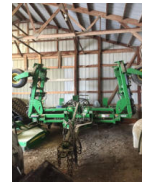
650/65R38 Michelin Floater Tires (AL305), set of 4. Notes: Item Location: Webster, IA 52355 Equipment Sold "AS IS, WHERE IS": All equipment/property is sold "AS IS, WHERE IS" with no warranty or guarantees, expressed or implied, No operational assessments have been made by DPA Auctions on this item, it has been photographed ONLY.



---

### #391 - 2010 John Deere 2510 High Speed NH3 Tool Bar (AL290)

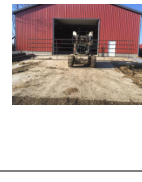
2010 John Deere 2510 High Speed NH3 Tool Bar (AL290), 11 knife with rate and 1/2 on ends, John Deere rate controller, Raven Coolers, weight on the wings, 12.5L-15Fl, new boots and beaver tails, has draw bar but can be used as a 3 point. Notes: Item Location: Carlinville, IL 62626 Equipment Sold "AS IS, WHERE IS": All equipment/property is sold "AS IS, WHERE IS" with no warranty or guarantees, expressed or implied, No operational assessments have been made by DPA Auctions on this item, it has been photographed ONLY.



---

### #392 - (10) Ten 20' 6 Bar Continuous Panels (AL296)

(10) Ten 20' 6 Bar Continuous Panels (AL296), 4' tall made from 1 1/4 round tubing, and 5/8" divider supports come with clips and connectors. In a bundle of ten. Notes: Item Location: West Point, NE 68788 Equipment Sold "AS IS, WHERE IS": All equipment/property is sold "AS IS, WHERE IS" with no warranty or guarantees, expressed or implied, No operational assessments have been made by DPA Auctions on this item, it has been photographed ONLY.



---

### #393 - 26' Bottomless Bunk (AL294)

26' Bottomless Bunk (AL294), 3' wide braced by 3" 11 gauge square tubing and 1/4"x4" wide angle iron, 38.5" tall, top rail is 2 7/8 drill stem, will hold up to 1000 pounds high roughage diet. Notes: Item Location: West Point, NE 68788 Equipment Sold "AS IS, WHERE IS": All equipment/property is sold "AS IS, WHERE IS" with no warranty or guarantees, expressed or implied, No operational assessments have been made by DPA Auctions on this item, it has been photographed ONLY.



---

### #394 - 26' Bottomless Bunk (AL295)

26' Bottomless Bunk (AL295), 3' wide braced by 3" 11 gauge square tubing and 1/4"x4" wide angle iron, 38.5" tall, top rail is 2 7/8 drill stem, will hold up to 1000 pounds high roughage diet. Notes: Item Location: West Point, NE 68788 Equipment Sold "AS IS, WHERE IS": All equipment/property is sold "AS IS, WHERE IS" with no warranty or guarantees, expressed or implied, No operational assessments have been made by DPA Auctions on this item, it has been photographed ONLY.



---

### #395 - 3000 Gallon Fuel Tank (ED471)

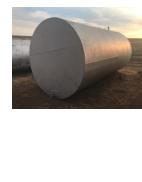
3000 Gallon Fuel Tank (ED471), has been used for diesel but is no longer needed, tank is in very good shape, comes with a 2" gate valve outlet. Notes: Item Location: Hawarden, IA 51023 Equipment Sold "AS IS, WHERE IS": All equipment/property is sold "AS IS, WHERE IS" with no warranty or guarantees, expressed or implied, No operational assessments have been made by DPA Auctions on this item, it has been photographed ONLY.



---

### #396 - 6000 Gallon Fuel Tank (ED470)

6000 Gallon Fuel Tank (ED470), has been used for diesel but are no longer needed, tank is in very good shape, comes with 2" gate valve outlet. Notes: Item Location: Hawarden, IA 51023 Equipment Sold "AS IS, WHERE IS": All equipment/property is sold "AS IS, WHERE IS" with no warranty or guarantees, expressed or implied, No operational assessments have been made by DPA Auctions on this item, it has been photographed ONLY.





### #397 - 2009 Gustafson RH2000 Seed Treater (DL236)

2009 Gustafson RH2000 Seed Treater (DL236), seed treater is equipped with a variable speed seed wheel for more precise treating, all control panels for this machine are complete and working, has control panel for running four chemical pumps. Notes: Machine is in great shape. Item Location: Salem, IL 62881 Equipment Sold "AS IS, WHERE IS": All equipment/property is sold "AS IS, WHERE IS" with no warranty or guarantees, expressed or implied, No operational assessments have been made by DPA Auctions on this item, it has been photographed ONLY.



### #398 - Krause 1976 28' Disc (AL289)

Krause 1976 28' Disc (AL289), 71 disc measuring 21", bearings recently replaced, no welds or repairs, low acre. Notes: Very good condition, second owner. Item Location: Hardin, MO 64035 Equipment Sold "AS IS, WHERE IS": All equipment/property is sold "AS IS, WHERE IS" with no warranty or guarantees, expressed or implied, No operational assessments have been made by DPA Auctions on this item, it has been photographed ONLY.



### #399 - 1997 Mack CH613 (DL235, Unit 42831)

1997 Mack CH613 (DL235, Unit 42831), E7 427 Motor, 10 speed, AM/FM Stereo w/ CD, Tyler 16 ton dry tender box w/ manual roll tarp, hub odometer shows 61,074 miles, side shooter auger, shows 33,768 miles. Notes: Miles are not actual, contact seller for more details. PLEASE ALLOW AT LEAST 60 DAYS FOR TITLE TRANSFER. Item Location: Fairmont, MN 56031 Equipment Sold "AS IS, WHERE IS": All equipment/property is sold "AS IS, WHERE IS" with no warranty or guarantees, expressed or implied, No operational assessments have been made by DPA Auctions on this item, it has been photographed ONLY.



### #400 - 1991 IHC 8200 (DL234, Unit 42826)

1991 IHC 8200 (DL234, Unit 42826), Cummins LTA 10 Turbo engine, diesel fuel, 1600 gallon stainless steel tank has been laid over on driver's side, 3" PTO pump, shows 727,374 miles. Notes: PLEASE ALLOW AT LEAST 60 DAYS FOR TITLE TRANSFER. Item Location: Fairmont, MN 56031 Equipment Sold "AS IS, WHERE IS": All equipment/property is sold "AS IS, WHERE IS" with no warranty or guarantees, expressed or implied, No operational assessments have been made by DPA Auctions on this item, it has been photographed ONLY.



### #401 - 2006 Chevrolet 2500 (DL233, Unit 42813)

2006 Chevrolet 2500 (DL233, Unit 42813), extended cab, 4x4, AM/FM radio w/ CD player, heat & A/C, power locks, rear defrost, cargo light, DMI ag hitch, Vortex 6000 V8, shows 249,278 miles. Notes: There is an issue with the transfer case/4 wheel drive. PLEASE ALLOW AT LEAST 60 DAYS FOR TITLE TRANSFER. Item Location: Fairmont, MN 56031 Equipment Sold "AS IS, WHERE IS": All equipment/property is sold "AS IS, WHERE IS" with no warranty or guarantees, expressed or implied, No operational assessments have been made by DPA Auctions on this item, it has been photographed ONLY.



### #402 - 2000 Ford Taurus (MH264)

2000 Ford Taurus (MH264), remanufactured V6 engine, automatic transmission, AM/FM radio with cassette, power driver seat, power/ heated mirrors, power locks, rear defrost, 215/60R16 tires, needs new torque converter clutch sensor, needs new tires, has a coolant leak, shows 203,445 miles. Notes: Needs to be hauled due to dead battery, coolant leak, and tires not holding air. Cosmetic defects such as scratches, rust, dents, cracked bumper, crack in windshield, all have been pictured. Item Location: Hooper, NE 68031 Equipment Sold "AS IS, WHERE IS": All equipment/property is sold "AS IS, WHERE IS" with no warranty or guarantees, expressed or implied, No operational assessments have been made by DPA Auctions on this item, it has been photographed ONLY.



### #405 - Metal Siding/Roofing (DR8497)

Metal Siding/Roofing (DR8497), NEW UNUSED (44) sheets, American made, White color, 16'-4"long X 36" overlap coverage, Premium Plus Panel G90 Ultra Livestock Profile style, 29 gauge. ALWAYS stored inside. Meets all USA building material engineering codes for Tested Tolerances for wind & snow. USA stamped seal of approval documentation on all products. Notes: Loadout IS available with flexible appointments. Can also offer hardware, trim, corners at wholesale prices. Item Location: Monroe, NE 68647 Equipment Sold "AS IS, WHERE IS": All equipment/property is sold "AS IS, WHERE IS" with no warranty or guarantees, expressed or implied, No operational assessments have been made by DPA Auctions on this item, it has been photographed ONLY.



---

### #406 - Metal Siding/Roofing (DR8498)

Metal Siding/Roofing (DR8498), NEW UNUSED (44) sheets, American made, White color, 16'-4"long X 36" overlap coverage, Premium Plus Panel G90 Ultra Livestock Profile style, 29 gauge. ALWAYS stored inside. Meets all USA building material engineering codes for Tested Tolerances for wind & snow. USA stamped seal of approval documentation on all products. Notes: Loadout IS available with flexible appointments. Can also offer hardware, trim, corners at wholesale prices. Item Location: Monroe, NE 68647 Equipment Sold "AS IS, WHERE IS": All equipment/property is sold "AS IS, WHERE IS" with no warranty or guarantees, expressed or implied, No operational assessments have been made by DPA Auctions on this item, it has been photographed ONLY.



---

### #407 - Metal Siding/Roofing (DR8499)

Metal Siding/Roofing (DR8499), NEW UNUSED (44) sheets, American made, White color, 16'-4"long X 36" overlap coverage, Premium Plus Panel G90 Ultra Livestock Profile style, 29 gauge. ALWAYS stored inside. Meets all USA building material engineering codes for Tested Tolerances for wind & snow. USA stamped seal of approval documentation on all products. Notes: Loadout IS available with flexible appointments. Can also offer hardware, trim, corners at wholesale prices. Item Location: Monroe, NE 68647 Equipment Sold "AS IS, WHERE IS": All equipment/property is sold "AS IS, WHERE IS" with no warranty or guarantees, expressed or implied, No operational assessments have been made by DPA Auctions on this item, it has been photographed ONLY.



---

### #408 - Metal Siding/Roofing (DR8500)

Metal Siding/Roofing (DR8500), NEW UNUSED (44) sheets, American made, White color, 16'-4"long X 36" overlap coverage, Premium Plus Panel G90 Ultra Livestock Profile style, 29 gauge. ALWAYS stored inside. Meets all USA building material engineering codes for Tested Tolerances for wind & snow. USA stamped seal of approval documentation on all products. Notes: Loadout IS available with flexible appointments. Can also offer hardware, trim, corners at wholesale prices. Item Location: Monroe, NE 68647 Equipment Sold "AS IS, WHERE IS": All equipment/property is sold "AS IS, WHERE IS" with no warranty or guarantees, expressed or implied, No operational assessments have been made by DPA Auctions on this item, it has been photographed ONLY.



---

### #409 - 2018 Mission Solar Panels (DR8501)

2018 Mission Solar Panels (DR8501), model MSE340S06J, 340 watt Mono 72 cell, made in USA, (26) panels in this lot, 25 year manufacture warranty, NEW UNUSED. Notes: Loadout IS available with flexible appointments. Item Location: Monroe, NE 68647 Equipment Sold "AS IS, WHERE IS": All equipment/property is sold "AS IS, WHERE IS" with no warranty or guarantees, expressed or implied, No operational assessments have been made by DPA Auctions on this item, it has been photographed ONLY.



---

### #410 - John Deere 335 Disk (NP6583)

John Deere 335 Disk (NP6583), no welds, 21" blades on the front, 22" blades on the back, 28' width, lot of new parts on it, bearings, spools and some blades, it is missing one hub on one wing, the scraper's on the bottom left will be back on the disk before sale day. Notes: Item Location: Puxico, MO 63960 Equipment Sold "AS IS, WHERE IS": All equipment/property is sold "AS IS, WHERE IS" with no warranty or guarantees, expressed or implied, No operational assessments have been made by DPA Auctions on this item, it has been photographed ONLY.



---

### #411 - International 440 Square Baler (NP6584)

International 440 Square Baler (NP6584), been in the barn since seller has owned it, good needles, works good. Notes: Item Location: Puxico, MO 63960 Equipment Sold "AS IS, WHERE IS": All equipment/property is sold "AS IS, WHERE IS" with no warranty or guarantees, expressed or implied, No operational assessments have been made by DPA Auctions on this item, it has been photographed ONLY.



---

### #412 - Hydra-Mac 9CL (DR8598)

Hydra-Mac 9CL (DR8598), 36hp Briggs gas engine (replaced in 1995), water cooled, hydrostatic drive, ROPS canopy, 54" smooth bucket, includes 54" manure bucket, NEW 6 ply 27 X 8.50-15 tires, (less than 1 hour on tires), also includes replaced tires, owners manual, shows 1168 actual hours. Notes: This is 1 owner skid steer hours are correct. Everything works great, owner upgraded to larger loader. Engine DOES NOT SMOKE, video was taken on 20 degree morning. Item Location: Craig, NE 68019 Equipment Sold "AS IS, WHERE IS": All equipment/property is sold "AS IS, WHERE IS" with no warranty or guarantees, expressed or implied, No operational assessments have been made by DPA Auctions on this item, it has been photographed ONLY.



---

### #413 - 1994 1803 Terra Gator (KMK2099)

1994 1803 Terra Gator (KMK2099), 8.3L Cummins with approximately 1000 hours on engine, diesel, Allison automatic transmission, 1550 gallon stainless steel liquid system, 60' boom, no welds on boom 60" spacing, flood jets, stainless still foam marker tank, Terra Tronic controller, 66x43.00-25 tires, shows 38521 miles, shows 4931 hours. Notes: Item Location: Lawton, IA 51030 Equipment Sold "AS IS, WHERE IS": All equipment/property is sold "AS IS, WHERE IS" with no warranty or guarantees, expressed or implied, No operational assessments have been made by DPA Auctions on this item, it has been photographed ONLY.



---

### #414 - John Deere 544B Loader (KMK2101)

John Deere 544B Loader (KMK2101), John Deere diesel engine, shuttle shift transmission, cab, lights, bucket, 17.5-25 tires, shows 3354 hours. Notes: Item Location: Lawton, IA 51030 Equipment Sold "AS IS, WHERE IS": All equipment/property is sold "AS IS, WHERE IS" with no warranty or guarantees, expressed or implied, No operational assessments have been made by DPA Auctions on this item, it has been photographed ONLY.



---

### #415 - John Deere 4640 (KMK2100)

John Deere 4640 (KMK2100), John Deere diesel engine, quad range transmission, cab, am/FM radio, heat and AC, hydraulic outlets, PTO, short axle, wide front, 11.00-16.5L front tires, 18.4R38 rear tires, shows 8137 hours. Notes: Front weights, quick hitch and baler plug DO NOT sell with this lot. Item Location: Lawton, IA 51030 Equipment Sold "AS IS, WHERE IS": All equipment/property is sold "AS IS, WHERE IS" with no warranty or guarantees, expressed or implied, No operational assessments have been made by DPA Auctions on this item, it has been photographed ONLY.



---

### #416 - Row Crop Fenders (KMK2098)

Row Crop Fenders (KMK2098), good shape, fits International, game off International 3185. Notes: Item Location: Lawton, IA 51030 Equipment Sold "AS IS, WHERE IS": All equipment/property is sold "AS IS, WHERE IS" with no warranty or guarantees, expressed or implied, No operational assessments have been made by DPA Auctions on this item, it has been photographed ONLY.



---

### #417 - Stainless Steel Fenders (KMK2097)

Stainless Steel Fenders (KMK2097), two stainless steel semi fenders. Notes: Item Location: Lawton, IA 51030 Equipment Sold "AS IS, WHERE IS": All equipment/property is sold "AS IS, WHERE IS" with no warranty or guarantees, expressed or implied, No operational assessments have been made by DPA Auctions on this item, it has been photographed ONLY.



---

### #418 - 1994 Terra Gator 1844 (KMK497)

1994 Terra Gator 1844 (KMK497), 3208 CAT turbo diesel engine, Allison automatic transmission, cab heat and air conditioning, AM/FM radio, Air Spreader box with new bearings on apron chain, new front Firestone 48 X 31 - 20 tires, rear tires at 85% tread, Goodyear 1000/50 R 25 tires, unit # 1021, shows 80,419 miles, shows 5825 hours. Notes: Item Location: Madison, SD 57042 Equipment Sold "AS IS, WHERE IS": All equipment/property is sold "AS IS, WHERE IS" with no warranty or guarantees, expressed or implied, No operational assessments have been made by DPA Auctions on this item, it has been photographed ONLY.



---

### #419 - 2018 Brand New Brute Skid Steer Heavy Duty Tine Grapple (PD714)

2018 Brand New Brute Skid Steer Heavy Duty Tine Grapple (PD714), 82 inch, universal skid steer mounting plate, unused, 10 inch spacing steel tines, all pivot points greasable, 2 independent working cylinders, built very heavy. Notes: Will help load. Item Location: Jackson, MN 56143 Equipment Sold "AS IS, WHERE IS": All equipment/property is sold "AS IS, WHERE IS" with no warranty or guarantees, expressed or implied, No operational assessments have been made by DPA Auctions on this item, it has been photographed ONLY.



---

### #420 - 2018 Brand New Brute Skid Steer Heavy Duty Tine Grapple (PD713)

2018 Brand New Brute Skid Steer Heavy Duty Tine Grapple (PD713), 80 inch, universal skid steer mounting plate, unused, 8 inch spacing steel tines, all pivot points greasable, 2 independent working cylinders, built very heavy. Notes: Will help load. Item Location: Jackson, MN 56143 Equipment Sold "AS IS, WHERE IS": All equipment/property is sold "AS IS, WHERE IS" with no warranty or guarantees, expressed or implied, No operational assessments have been made by DPA Auctions on this item, it has been photographed ONLY.



### #421 - Liquid Tank System (TR4708)

Liquid Tank System (TR4708), 2600 gal poly tank with pump and motor, 1000 gal poly tank, all plumbed for 2", can be plumbed for 3" with adapter, all on a 20' flatbed with headache rack. Notes: Gear not included. Item Location: Pender, NE 68047 Equipment Sold "AS IS, WHERE IS": All equipment/property is sold "AS IS, WHERE IS" with no warranty or guarantees, expressed or implied, No operational assessments have been made by DPA Auctions on this item, it has been photographed ONLY.



### #422 - 1992 Ford F-350 (AL298)

1992 Ford F-350 (AL298), diesel engine, 4x4, manual transmission, am/FM cassette radio, flat bed, dually, LT215/85R16 tires, fifth wheel ball, power windows and locks, shows 109051 miles. Notes: Item Location: Greenfield, IL 62044 Equipment Sold "AS IS, WHERE IS": All equipment/property is sold "AS IS, WHERE IS" with no warranty or guarantees, expressed or implied, No operational assessments have been made by DPA Auctions on this item, it has been photographed ONLY.



### #423 - Willmar Dry Spreader (TR4125)

Willmar Dry Spreader (TR4125), 1997 Willmar Super 800, 8 ton, PTO, dual spinners, 19-16L tires, tandem axle, web chain. Notes: Axle broken. Item Location: Waterloo, IL 62298 Equipment Sold "AS IS, WHERE IS": All equipment/property is sold "AS IS, WHERE IS" with no warranty or guarantees, expressed or implied, No operational assessments have been made by DPA Auctions on this item, it has been photographed ONLY.



### #424 - 2010 Merritt With Rapat Conveyor (AL308)

2010 Merritt With Rapat Conveyor (AL308), 38.5x96x68, tandem axle, spring ride suspension, 11R 24.5 tires, electric roll tarp. Notes: Item Location: Watertown, SD 57201 Equipment Sold "AS IS, WHERE IS": All equipment/property is sold "AS IS, WHERE IS" with no warranty or guarantees, expressed or implied, No operational assessments have been made by DPA Auctions on this item, it has been photographed ONLY.



### #425 - 2013 Merritt With Rapat Conveyor (AL309)

2013 Merritt With Rapat Conveyor (AL309), 38.5x96x68, tandem axle, air ride suspension, 11R24.5 Tires, electric roll tarp, 8 aluminum wheels. Notes: Item Location: Watertown, SD 57201 Equipment Sold "AS IS, WHERE IS": All equipment/property is sold "AS IS, WHERE IS" with no warranty or guarantees, expressed or implied, No operational assessments have been made by DPA Auctions on this item, it has been photographed ONLY.



### #426 - 2012 Merritt Quickveyor (AL310)

2012 Merritt Quickveyor (AL310), 38.5x96x68, tandem axle, spring ride suspension, 11R22.5 tires, electric roll tarp, 4 compartments, 4 aluminum wheels. Notes: Item Location: Watertown, SD 57201 Equipment Sold "AS IS, WHERE IS": All equipment/property is sold "AS IS, WHERE IS" with no warranty or guarantees, expressed or implied, No operational assessments have been made by DPA Auctions on this item, it has been photographed ONLY.



### #427 - 2008 Merritt Quickveyor (AL311)

2008 Merritt Quickveyor (AL311), 38.5x96x68, tandem axle, spring ride suspension, 11R22.5 tires, electric roll tarp. Notes: Item Location: Watertown, SD 57201 Equipment Sold "AS IS, WHERE IS": All equipment/property is sold "AS IS, WHERE IS" with no warranty or guarantees, expressed or implied, No operational assessments have been made by DPA Auctions on this item, it has been photographed ONLY.



### #428 - 2011 Merritt Quickveyor (AL312)

2011 Merritt Quickveyor (AL312), 38.5x96x68, tandem axle, spring ride suspension, 11R22.5 tires, electric roll tarp, electric traps, 4 compartments. Notes: Item Location: Watertown, SD 57201 Equipment Sold "AS IS, WHERE IS": All equipment/property is sold "AS IS, WHERE IS" with no warranty or guarantees, expressed or implied, No operational assessments have been made by DPA Auctions on this item, it has been photographed ONLY.



### #429 - Direct Injection System for JD 4940 Sprayer (DR8606)

Direct Injection System for JD 4940 Sprayer (DR8606), NEW NEVER USED, direct injection system for John Deere 4940, includes the following: Raven Sidekick Pro-ISO, Pump Size 5-200 oz/per minute, NEW plunger/calibration tube, was only used for winterization purposes, NO chemical has been through pump. Notes: Can also be used for direct injection, pesticide, fungicide, nitrogen stabilizer etc...35 gallon chemical capacity tank with all mounting hardware/bolts, installation instructions, mixing chamber, wiring harnesses and misc. hardware/bolts for attachment included. Item Location: Fort Dodge, IA 50501 Equipment Sold "AS IS, WHERE IS": All equipment/property is sold "AS IS, WHERE IS" with no warranty or guarantees, expressed or implied, No operational assessments have been made by DPA Auctions on this item, it has been photographed ONLY.





---

### #430 - Raven Sidekick Pro-ISO (DR8604)

Raven Sidekick Pro-ISO (DR8604), pump size 5-200 oz/minute, comes with a BRAND NEW plunger/calibration tube, came off a BRAND NEW machine (only used for winterization purposes), NO chemical has been through pump, can be used for Direct Injection on Herbicide/Pesticide/Fungicide/Nitrogen Stabilizer, etc. Notes: Can also be used for direct injection, pesticide, fungicide, nitrogen stabilizer etc. Item Location: Fort Dodge, IA 50501 Equipment Sold "AS IS, WHERE IS": All equipment/property is sold "AS IS, WHERE IS" with no warranty or guarantees, expressed or implied, No operational assessments have been made by DPA Auctions on this item, it has been photographed ONLY.



---

### #431 - (4) Row Crop Tires/Rims(DR8605)

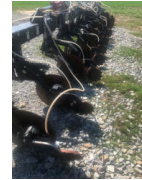
(4) Row Crop Tires/Rims (DR8605), (4) Goodyear 320/90R50 size, 161/B, 12 bolt rim pattern, came off John Deere 4830, 35-40% tread, always stored inside when not being used. Notes: Item Location: Fort Dodge, IA 50501 Equipment Sold "AS IS, WHERE IS": All equipment/property is sold "AS IS, WHERE IS" with no warranty or guarantees, expressed or implied, No operational assessments have been made by DPA Auctions on this item, it has been photographed ONLY.



---

### #432 - Yetter Avenger NH3 Bar (KMK502)

Yetter Avenger NH3 Bar (KMK502), 2565-366 NH3 machine, single folding 7 x 7 bar, Orthman 3 pt., 12 row 30", 13 units on the bar, Yetter Avenger units, model number on the Yetter units, spring-loaded, adjustable down pressure settings, closing wheels, knives. Notes: Item Location: Ewing, IL 62836 Equipment Sold "AS IS, WHERE IS": All equipment/property is sold "AS IS, WHERE IS" with no warranty or guarantees, expressed or implied, No operational assessments have been made by DPA Auctions on this item, it has been photographed ONLY.



---

### #433 - Willmar Dry Spreader (NJP1250, Unit D76)

Willmar Dry Spreader (NJP1250, Unit D76), Willmar 500 dry spreader, twin spinner, PTO, tarp, 11L-15 flotation tires. Notes: Item Location: Hazel Green, WI 53811 Equipment Sold "AS IS, WHERE IS": All equipment/property is sold "AS IS, WHERE IS" with no warranty or guarantees, expressed or implied, No operational assessments have been made by DPA Auctions on this item, it has been photographed ONLY.



---

### #434 - Willmar Dry Spreader (NJP1251, Unit D77)

Willmar Dry Spreader (NJP1251, Unit D77), Willmar 500 dry spreader, twin spinner, PTO, tarp, 11L-15 flotation tires. Notes: Item Location: Hazel Green, WI 53811 Equipment Sold "AS IS, WHERE IS": All equipment/property is sold "AS IS, WHERE IS" with no warranty or guarantees, expressed or implied, No operational assessments have been made by DPA Auctions on this item, it has been photographed ONLY.



---

### #435 - Willmar Dry Spreader (NJP1248, Unit D78)

Willmar Dry Spreader (NJP1248, Unit D78), Willmar 500 dry spreader, twin spinner, PTO, tarp, 11L-15 flotation tires. Notes: Item Location: Hazel Green, WI 53811 Equipment Sold "AS IS, WHERE IS": All equipment/property is sold "AS IS, WHERE IS" with no warranty or guarantees, expressed or implied, No operational assessments have been made by DPA Auctions on this item, it has been photographed ONLY.



---

### #436 - Willmar Dry Spreader (NJP1249, Unit D80)

Willmar Dry Spreader (NJP1249, Unit D80), Willmar 500 dry spreader, twin spinner, PTO, tarp, 11L-15 flotation tires. Notes: Item Location: Hazel Green, WI 53811 Equipment Sold "AS IS, WHERE IS": All equipment/property is sold "AS IS, WHERE IS" with no warranty or guarantees, expressed or implied, No operational assessments have been made by DPA Auctions on this item, it has been photographed ONLY.



---

### #437 - Simonsen Dry Spreader (NJP1252, Unit D102)

Simonsen Dry Spreader (NJP1252, Unit D102), Simonsen 2064 6 ton dry spreader, single spinner, PTO, tarp, 16.5L-16.1 flotation tires. Notes: Item Location: Hazel Green, WI 53811 Equipment Sold "AS IS, WHERE IS": All equipment/property is sold "AS IS, WHERE IS" with no warranty or guarantees, expressed or implied, No operational assessments have been made by DPA Auctions on this item, it has been photographed ONLY.



---

### #438 - 1995 GMC TopKick Liquid Nurse Truck (NJP1253, Unit 396)

1995 GMC TopKick Liquid Nurse Truck (NJP1253, Unit 396), gas engine, 5 speed transmission, 2 speed rear end, air conditioning, heat, Am/Fm radio, single axle, stainless steel liquid nurse tank, 11R22.5 tires, shows 134,410 miles. Notes: Item Location: Hazel Green, WI 53811 Equipment Sold "AS IS, WHERE IS": All equipment/property is sold "AS IS, WHERE IS" with no warranty or guarantees, expressed or implied, No operational assessments have been made by DPA Auctions on this item, it has been photographed ONLY.



---

**#439 - 1999 Ford F350 Dually Flatbed (NJP1255, Unit 366)**

1999 Ford F350 Dually Flatbed (NJP1255, Unit 366), DIESEL engine, 4 speed transmission with overdrive, air conditioning, heat, Am/Fm radio, cruise control, LT235/85R16 tires, shows 181,843 miles. Notes: Item Location: Hazel Green, WI 53811 Equipment Sold "AS IS, WHERE IS": All equipment/property is sold "AS IS, WHERE IS" with no warranty or guarantees, expressed or implied, No operational assessments have been made by DPA Auctions on this item, it has been photographed ONLY.



---

**#440 - 2006 GMC Canyon Extended Cab Pickup (NJP1246, Unit 408)**

2006 GMC Canyon Extended Cab Pickup (NJP1246, Unit 408), 4x4, gas engine, automatic transmission, air conditioning, heat, Am/Fm CD stereo, cruise control, power windows & locks, running boards, 235/75R15 tires, shows 253,678 miles. Notes: Item Location: Hazel Green, WI 53811 Equipment Sold "AS IS, WHERE IS": All equipment/property is sold "AS IS, WHERE IS" with no warranty or guarantees, expressed or implied, No operational assessments have been made by DPA Auctions on this item, it has been photographed ONLY.



---

**#441 - 2008 Ford F150 STX Extended Cab Pickup (NJP1247, Unit 407)**

2008 Ford F150 STX Extended Cab Pickup (NJP1247, Unit 407), 4x4, gas engine, automatic transmission, air conditioning, heat, Am/Fm CD stereo, cruise control, power windows & locks, running boards, P255/70R17 tires, shows 127,295 miles. Notes: Item Location: Hazel Green, WI 53811 Equipment Sold "AS IS, WHERE IS": All equipment/property is sold "AS IS, WHERE IS" with no warranty or guarantees, expressed or implied, No operational assessments have been made by DPA Auctions on this item, it has been photographed ONLY.



---

**#442 - Control Boxes (NJP1256)**

Control Boxes (NJP1256), Control boxes. Notes: Item Location: Hazel Green, WI 53811 Equipment Sold "AS IS, WHERE IS": All equipment/property is sold "AS IS, WHERE IS" with no warranty or guarantees, expressed or implied, No operational assessments have been made by DPA Auctions on this item, it has been photographed ONLY.



---

**#443 - Seed Tender (PZ8971)**

Seed Tender (PZ8971), 110 bulk express seed tender, side discharge auger, Honda 5.5 gas engine, tandem axle, flotation tires. Notes: Bottom end will need some attention, contact seller for more details. Item Location: Grinnell, IA 50112 Equipment Sold "AS IS, WHERE IS": All equipment/property is sold "AS IS, WHERE IS" with no warranty or guarantees, expressed or implied, No operational assessments have been made by DPA Auctions on this item, it has been photographed ONLY.



---

**#444 - 1992 White/GMC Cab/Chassis Truck (NJP1244, Unit 212)**

1992 White/GMC Cab/Chassis Truck (NJP1244, Unit 212), diesel engine, 9 speed transmission, air conditioning, heat, Am/Fm radio, tandem axle, full screw, cheater axle, air ride suspension, 315/80R22.5 front tires, 11R22.5 rear tires, 10R17.5 cheater tires, (feed body Does NOT sell, they are removing it) shows 819,702 miles. Notes: Feed Body does NOT sell with truck, they will be removing it. Weak batteries. Item Location: Elkader, IA 52043 Equipment Sold "AS IS, WHERE IS": All equipment/property is sold "AS IS, WHERE IS" with no warranty or guarantees, expressed or implied, No operational assessments have been made by DPA Auctions on this item, it has been photographed ONLY.



---

**#445 - 1991 Western Star 4964F Truck (NJP1245, Unit 674)**

1991 Western Star 4964F Truck (NJP1245, Unit 674), Detroit Series 60 diesel engine, 15 speed transmission, air conditioning, heat, Am/Fm CD stereo, cruise control, engine brake, tandem axle, full screw, air ride suspension, 285/75R24.5 tires. Notes: Item Location: Elkader, IA 52043 Equipment Sold "AS IS, WHERE IS": All equipment/property is sold "AS IS, WHERE IS" with no warranty or guarantees, expressed or implied, No operational assessments have been made by DPA Auctions on this item, it has been photographed ONLY.



---

**#446 - 1990 Ford F800 Liquid Nurse Truck (NJP1243, Unit 213)**

1990 Ford F800 Liquid Nurse Truck (NJP1243, Unit 213), diesel engine, 5 speed transmission, heat, Am/Fm radio, single axle, 1800 gallon poly liquid nurse tank, 10.00-20 tires, shows 136,399 miles. Notes: Item Location: Monona, IA 52159 Equipment Sold "AS IS, WHERE IS": All equipment/property is sold "AS IS, WHERE IS" with no warranty or guarantees, expressed or implied, No operational assessments have been made by DPA Auctions on this item, it has been photographed ONLY.



---

**#447 - 1990 IHC 4900 Dry Tender Truck (NJP1242, Unit 217)**

1990 IHC 4900 Dry Tender Truck (NJP1242, Unit 217), diesel engine, Spicer Double Duty D transmission, 2 speed rear end, air conditioning, heat, Am/Fm cassette radio, single axle, Willmar 10 ton dry tender box, rear discharge auger, all hydraulic, roll over tarp, 11R22.5 tires, shows 75,252 miles. Notes: Item Location: Elma, IA 50628 Equipment Sold "AS IS, WHERE IS": All equipment/property is sold "AS IS, WHERE IS" with no warranty or guarantees, expressed or implied, No operational assessments have been made by DPA Auctions on this item, it has been photographed ONLY.



**#448 - 2600 gallon Poly Tank with Metal Stand**

2600 gallon Poly Tank with Metal Stand, Cone-bottom tank, Measurements: 8' diameter x 12' tall, Inside of tank is clean. Notes: Item Location: Hazel Green, WI 53811 Equipment Sold "AS IS, WHERE IS": All equipment/property is sold "AS IS, WHERE IS" with no warranty or guarantees, expressed or implied, No operational assessments have been made by DPA Auctions on this item, it has been photographed ONLY.

