

## Auction catalog

<b>Title</b>	Online Auction April 24, 2018 10AM Central
<b>Description</b>	The following line of Fertilizer, Farm Implement, Truck, Trailer & Construction Equipment will be sold online with the bidding ending on April 24, 2018. Location of the equipment is given. Bidding within the last minute before the closing of a lot will extend the bidding time by an additional minute. Be prepared to bid accordingly. For more information, contact Del Peterson & Associates: 419 West Judy Drive Fremont NE, 68025 Phone: 800-492-9090 or 402-721-4388 Fax: 402-721-4583 E-mail: auction@delpeterson.com
<b>Date</b>	Tue, Apr 24, 2018
<b>Starts at</b>	10:00 AM
<b>Address</b>	PO Box 654, Fremont, NE 68026 USA
<b>Categories</b>	

### #1 - 5th Wheel Plates (PZ8980)

5th Wheel Plates (PZ8980), 2 - 5th wheel plates. Notes: Item Location: Greenview, IL 62642 Equipment Sold "AS IS, WHERE IS": All equipment/property is sold "AS IS, WHERE IS" with no warranty or guarantees, expressed or implied, No operational assessments have been made by DPA Auctions on this item, it has been photographed ONLY.



### #2 - Fenders (PZ8981)

Fenders (PZ8981), Fenders, airlines, came off 2004 Western Star. Notes: Item Location: Greenview, IL 62642 Equipment Sold "AS IS, WHERE IS": All equipment/property is sold "AS IS, WHERE IS" with no warranty or guarantees, expressed or implied, No operational assessments have been made by DPA Auctions on this item, it has been photographed ONLY.



### #3 - Generac 15 KW Propane Generator (PZ8992)

Generac 15 KW Propane Generator (PZ8992), Generac model 00754-2 commercial grade propane generator, 1800 RPM, Fiat engine, block heater, liquid cooled, built in 100 Amp automatic transfer switch, 120/240V, 62.5 amps at 240V, weather proof enclosure, shows 617 hours. Notes: Regularly serviced and maintained. Have forklift to load. Item Location: Springfield, IL 62703 Equipment Sold "AS IS, WHERE IS": All equipment/property is sold "AS IS, WHERE IS" with no warranty or guarantees, expressed or implied, No operational assessments have been made by DPA Auctions on this item, it has been photographed ONLY.



### #4 - Generac 15 KW Propane Generator (PZ8993)

Generac 15 KW Propane Generator (PZ8993), Generac model 00754-5 commercial grade propane generator, 1800 RPM, Fiat engine, block heater, liquid cooled, built in 100 Amp automatic transfer switch, 120/240V, 62.5 amps at 240V, weather proof enclosure, shows 347 hours. Notes: Regularly serviced and maintained. Have forklift to load. Item Location: Springfield, IL 62703 Equipment Sold "AS IS, WHERE IS": All equipment/property is sold "AS IS, WHERE IS" with no warranty or guarantees, expressed or implied, No operational assessments have been made by DPA Auctions on this item, it has been photographed ONLY.



### #5 - Creamer Distributor (PZ8998)

Creamer Distributor (PZ8998), Creamer 8 hole distributor, 8" pipe. Notes: Item Location: Rochester, IN 46975 Equipment Sold "AS IS, WHERE IS": All equipment/property is sold "AS IS, WHERE IS" with no warranty or guarantees, expressed or implied, No operational assessments have been made by DPA Auctions on this item, it has been photographed ONLY.



### #6 - Raven Monitor (PZ8997)

Raven Monitor (PZ8997), Raven SCS460 monitor, stand. Notes: Item Location: Rochester, IN 46975 Equipment Sold "AS IS, WHERE IS": All equipment/property is sold "AS IS, WHERE IS" with no warranty or guarantees, expressed or implied, No operational assessments have been made by DPA Auctions on this item, it has been photographed ONLY.



---

### #7 - Durco Pump (PZ8995)

Durco Pump (PZ8995), Durco 3" liquid pump, stainless steel inductor, came off late 90's Silver Wheels. Notes: Item Location: Rochester, IN 46975 Equipment Sold "AS IS, WHERE IS": All equipment/property is sold "AS IS, WHERE IS" with no warranty or guarantees, expressed or implied, No operational assessments have been made by DPA Auctions on this item, it has been photographed ONLY.



---

### #8 - Super Single Tires (PZ8994)

Super Single Tires (PZ8994), 4 - Michelin 445/50R22.5 super singles @ 50-60%, mounted on pilot aluminum rims. Notes: Item Location: Rochester, IN 46975 Equipment Sold "AS IS, WHERE IS": All equipment/property is sold "AS IS, WHERE IS" with no warranty or guarantees, expressed or implied, No operational assessments have been made by DPA Auctions on this item, it has been photographed ONLY.



---

### #9 - Foam Marker Tanks (PZ8996)

Foam Marker Tanks (PZ8996), 2 - 50 gallon foam marker tanks, came off late 90's Silver Wheels. Notes: Item Location: Rochester, IN 46975 Equipment Sold "AS IS, WHERE IS": All equipment/property is sold "AS IS, WHERE IS" with no warranty or guarantees, expressed or implied, No operational assessments have been made by DPA Auctions on this item, it has been photographed ONLY.



---

### #10 - Gustafson Seed Treater Pump Stand (PZ8984)

Gustafson Seed Treater Pump Stand (PZ8984), Gustafson seed treater pump stand, 60 gallon poly cone bottom tank, Thermo flex master pump, IFM flow meter, Cal tube, agitators, off Ksi system. Notes: Item Location: Letts, IA 52754 Equipment Sold "AS IS, WHERE IS": All equipment/property is sold "AS IS, WHERE IS" with no warranty or guarantees, expressed or implied, No operational assessments have been made by DPA Auctions on this item, it has been photographed ONLY.



---

### #11 - Gustafson Seed Treater Pump Stand (PZ8985)

Gustafson Seed Treater Pump Stand (PZ8985), Gustafson seed treater pump stand, 60 gallon poly cone bottom tank, Thermo flex master pump, IFM flow meter, Cal tube, agitators, off Ksi system. Notes: Item Location: Letts, IA 52754 Equipment Sold "AS IS, WHERE IS": All equipment/property is sold "AS IS, WHERE IS" with no warranty or guarantees, expressed or implied, No operational assessments have been made by DPA Auctions on this item, it has been photographed ONLY.



---

### #12 - Nh3 Pump (DR8581)

Nh3 Pump (DR8581), Nh3 pump and motor. Notes: Item Location: Archer, IA 51231 Equipment Sold "AS IS, WHERE IS": All equipment/property is sold "AS IS, WHERE IS" with no warranty or guarantees, expressed or implied, No operational assessments have been made by DPA Auctions on this item, it has been photographed ONLY.



---

### #13 - Coulters (DR8584)

Coulters (DR8584), pallet lot of smooth and ripple coulters, NEW disc sealers blades. Notes: Item Location: Archer, IA 51231 Equipment Sold "AS IS, WHERE IS": All equipment/property is sold "AS IS, WHERE IS" with no warranty or guarantees, expressed or implied, No operational assessments have been made by DPA Auctions on this item, it has been photographed ONLY.



---

### #14 - Shanks (DR8588)

Shanks (DR8588), (11) tool bar shanks, a few have knives. Notes: Item Location: Archer, IA 51231 Equipment Sold "AS IS, WHERE IS": All equipment/property is sold "AS IS, WHERE IS" with no warranty or guarantees, expressed or implied, No operational assessments have been made by DPA Auctions on this item, it has been photographed ONLY.



---

### #15 - Equaply Liquimatic (DR8589)

Equaply Liquimatic (DR8589), tool bar liquimatic pump and manifold. Notes: Item Location: Archer, IA 51231 Equipment Sold "AS IS, WHERE IS": All equipment/property is sold "AS IS, WHERE IS" with no warranty or guarantees, expressed or implied, No operational assessments have been made by DPA Auctions on this item, it has been photographed ONLY.



---

### #16 - N-Serve (DR8590)

N-Serve (DR8590), N-serve pump and (2) 65 gallon poly tanks. Notes: Item Location: Archer, IA 51231 Equipment Sold "AS IS, WHERE IS": All equipment/property is sold "AS IS, WHERE IS" with no warranty or guarantees, expressed or implied, No operational assessments have been made by DPA Auctions on this item, it has been photographed ONLY.



---

### #17 - 2004 Chevrolet Silverado 3500

2004 Chevrolet Silverado 3500, Vortex 6000 V8 SFI gas engine, AM/FM radio, Heat/AC, cruise control, steering wheel controls, HD 4 speed automatic transmission, 142,000 miles. Notes: Item Location: Winnebago, MN 56098 Equipment Sold "AS IS, WHERE IS": All equipment/property is sold "AS IS, WHERE IS" with no warranty or guarantees, expressed or implied, No operational assessments have been made by DPA Auctions on this item, it has been photographed ONLY.



---

### #18 - 1992 Peterbilt 377 Dry Truck (TR4400)

1992 Peterbilt 377 Dry Truck (TR4400), diesel engine, 16 ton Chandler dry tender box, side shooter auger, NEW hydraulic pmp and horizontal auger rebuilt in Fall of 2017, 439,490 miles. Notes: Item Location: Winnebago, MN 56098 Equipment Sold "AS IS, WHERE IS": All equipment/property is sold "AS IS, WHERE IS" with no warranty or guarantees, expressed or implied, No operational assessments have been made by DPA Auctions on this item, it has been photographed ONLY.



---

### #19 - 2003 Chevolet Silverado 1500HD 4x4 Pickup (NP6579)

2003 Chevolet Silverado 1500HD 4x4 Pickup (NP6579), crew cab, short bed, gas engine, automatic transmission, running boards, grill guard, bed cover, shows 254,222 miles. Notes: Item Location: Baring, MO 63531 Equipment Sold "AS IS, WHERE IS": All equipment/property is sold "AS IS, WHERE IS" with no warranty or guarantees, expressed or implied, No operational assessments have been made by DPA Auctions on this item, it has been photographed ONLY.



---

### #20 - 1998 Volvo VNL64T Truck (PZ8977, Unit 62)

1998 Volvo VNL64T Truck (PZ8977, Unit 62), Cummins M11 diesel engine, Fuller RTLO-13610B transmission, air conditioning, heat, Am/Fm radio, 5th wheel, tandem axle, full screw, 11R22.5 tires, speedometer does not work. Notes: Speedometer does NOT work. Item Location: Webster City, IA 50595 Equipment Sold "AS IS, WHERE IS": All equipment/property is sold "AS IS, WHERE IS" with no warranty or guarantees, expressed or implied, No operational assessments have been made by DPA Auctions on this item, it has been photographed ONLY.



---

### #21 - Miller Bobcat Generator/Welder (NP6427)

Miller Bobcat Generator/Welder (NP6427), Model Bobcat 225 NT, CC/CV - AC/DC - 8000 Watt Generator - Welder, multipurpose series, Onan Performer 16 gas motor (S/N G973708827), on casters, shows 1,269 hours, with cover. Notes: Item Location: Girard, KS 66743 Equipment Sold "AS IS, WHERE IS": All equipment/property is sold "AS IS, WHERE IS" with no warranty or guarantees, expressed or implied, No operational assessments have been made by DPA Auctions on this item, it has been photographed ONLY.



---

### #22 - 2008 Blackmer Pump (PZ8982)

2008 Blackmer Pump (PZ8982), 2008 Blackmer 3" pump, 10 hp 3 phase motor, pump rebuilt fall of 2016. Notes: Item Location: Greenvew, IL 62642 Equipment Sold "AS IS, WHERE IS": All equipment/property is sold "AS IS, WHERE IS" with no warranty or guarantees, expressed or implied, No operational assessments have been made by DPA Auctions on this item, it has been photographed ONLY.



---

### #23 - Corken Vapor Pump (PZ8983)

Corken Vapor Pump (PZ8983), Corken model 290-K3FBA 1" vapor pump, Baldor 5 hp 3 phase motor. Notes: Item Location: Williamsville, IL 62693 Equipment Sold "AS IS, WHERE IS": All equipment/property is sold "AS IS, WHERE IS" with no warranty or guarantees, expressed or implied, No operational assessments have been made by DPA Auctions on this item, it has been photographed ONLY.



---

### #24 - Precision Boom (PZ8979)

Precision Boom (PZ8979), Precision tank built H frame, 60' boom, came off floater truck. Notes: Item Location: Greenvew, IL 62642 Equipment Sold "AS IS, WHERE IS": All equipment/property is sold "AS IS, WHERE IS" with no warranty or guarantees, expressed or implied, No operational assessments have been made by DPA Auctions on this item, it has been photographed ONLY.



---

### #25 - 1994 Western Star 4964F Truck (PZ8978)

1994 Western Star 4964F Truck (PZ8978), Cat 3406 diesel engine, 15 speed transmission, air conditioning, heat, Am/Fm radio, tandem axle, full screw, air ride suspension, 285/75R24.5 tires, shows 709,873 miles. Notes: Item Location: Greenvew, IL 62642 Equipment Sold "AS IS, WHERE IS": All equipment/property is sold "AS IS, WHERE IS" with no warranty or guarantees, expressed or implied, No operational assessments have been made by DPA Auctions on this item, it has been photographed ONLY.



---

### #26 - Good Year Flotation Tires (PZ8999)

Good Year Flotation Tires (PZ8999), 4 - Good Year 900/50R42 flotation tires & rims, 50% rubber. Notes: Item Location: Yarmouth, IA 52660 Equipment Sold "AS IS, WHERE IS": All equipment/property is sold "AS IS, WHERE IS" with no warranty or guarantees, expressed or implied, No operational assessments have been made by DPA Auctions on this item, it has been photographed ONLY.



---

### #27 - 1967 Chevy C50 (DR7166)

1967 Chevy C50 (DR7166), gas engine, model L20-11 hydraulic lime spreader box, slatted chain, dual spinners, 33' spread, AM/FM radio, 9.00-20 tires, shows 24,447 miles. Notes: Item Location: Highland, IL 62249 Equipment Sold "AS IS, WHERE IS": All equipment/property is sold "AS IS, WHERE IS" with no warranty or guarantees, expressed or implied, No operational assessments have been made by DPA Auctions on this item, it has been photographed ONLY.



---

### #28 - NEW NEVER USED Hitch Doc 110 Fuel Pod (TR0009)

NEW NEVER USED Hitch Doc 110 Fuel Pod (TR0009), 110 gal, 44" length, 56.5" Width, 37" overall height, Empty 470 lbs, loaded 1250 lbs, 12GPM 12 volt pump, 1" x 20' hose, Multiple Lifting Options, Durable Storage Compartment, 12 volt fuel pump with 12 GPM, Multiple Hose Position Variations, Heavy Duty 12V battery kit, 10 Micron Fuel Filter, Powder-Coat Finish, drain plug, 10 gauge double seam welds, dual baffled, fuel gauge. Notes: Fits seed box tenders and standard truck beds. Item Location: Fremont, NE 68025 Equipment Sold "AS IS, WHERE IS": All equipment/property is sold "AS IS, WHERE IS" with no warranty or guarantees, expressed or implied, No operational assessments have been made by DPA Auctions on this item, it has been photographed ONLY.



---

### #29 - Willmar Dry Tender Box (PZ8988)

Willmar Dry Tender Box (PZ8988), Willmar 16 ton dry tender box, rear discharge auger, auger is bent. Notes: Running gear NOT included. Item Location: Hoopeston, IL 60942 Equipment Sold "AS IS, WHERE IS": All equipment/property is sold "AS IS, WHERE IS" with no warranty or guarantees, expressed or implied, No operational assessments have been made by DPA Auctions on this item, it has been photographed ONLY.



---

### #30 - John Deere Liquid System (PZ8987)

John Deere Liquid System (PZ8987), John Deere 1200 gallon stainless steel liquid system (came off JD 4930), 120' boom, foam marker, poly foam marker tank. Notes: Running gear NOT included. Item Location: Hoopeston, IL 60942 Equipment Sold "AS IS, WHERE IS": All equipment/property is sold "AS IS, WHERE IS" with no warranty or guarantees, expressed or implied, No operational assessments have been made by DPA Auctions on this item, it has been photographed ONLY.





---

### #31 - Liquid Nurse Tank (PZ8989, Unit 409)

Liquid Nurse Tank (PZ8989, Unit 409), 1000 gallon aluminum liquid nurse tank, Honda 5.5 motor/pump, sparge line, tandem axle. Notes: Item Location: Hoopeston, IL 60942 Equipment Sold "AS IS, WHERE IS": All equipment/property is sold "AS IS, WHERE IS" with no warranty or guarantees, expressed or implied, No operational assessments have been made by DPA Auctions on this item, it has been photographed ONLY.



---

### #32 - Liquid Nurse Tank (PZ8990, Unit 411)

Liquid Nurse Tank (PZ8990, Unit 411), 1000 gallon aluminum liquid nurse tank, Honda 5.5 motor/pump, sparge line, tandem axle. Notes: Item Location: Hoopeston, IL 60942 Equipment Sold "AS IS, WHERE IS": All equipment/property is sold "AS IS, WHERE IS" with no warranty or guarantees, expressed or implied, No operational assessments have been made by DPA Auctions on this item, it has been photographed ONLY.



---

### #33 - Liquid Nurse Tank (PZ8991, Unit 412)

Liquid Nurse Tank (PZ8991, Unit 412), 1000 gallon aluminum liquid nurse tank, Honda 5.5 motor/pump, sparge line, tandem axle. Notes: Item Location: Hoopeston, IL 60942 Equipment Sold "AS IS, WHERE IS": All equipment/property is sold "AS IS, WHERE IS" with no warranty or guarantees, expressed or implied, No operational assessments have been made by DPA Auctions on this item, it has been photographed ONLY.



---

### #34 - 2015 Autocar XSpotter Truck (NP6582, Unit 1-630)

2015 Autocar XSpotter Truck (NP6582, Unit 1-630), Cummins 6.7L diesel engine 160HP (S/N 73639026), Allison 4 speed automatic transmission (S/N 6511215890), heat, air conditioning, 5th wheel cab controls, full heat packages on mirrors, strobe light/beacon, hi temp/low oil/ low water shutdown, air dryer, stand up cab, 5th wheel plate, 50 gallon fuel tank, site glass on radiator, front Meritor MFS-14 steer single axle 14,700# rating, rear Meritor RS24-160 reduction axle, Davco heated fuel water separator, 295/75R22.5 rear tires, 11R22.5 front tires, shows 392 miles, shows 13,664 hours. Notes: Extended warranty on major components until 8/20/2019. Please contact Cummins with engine serial number (73639026) for specific warranty details (800-286-6467). Transmission warranty through 8/6/18. Please contact Allison with transmission serial number (6511216890) for specific warranty details (816-781-8070). Buyer's are advised to do own due diligence on warranty details. Item Location: La Belle, MO 63447 Equipment Sold "AS IS, WHERE IS": All equipment/property is sold "AS IS, WHERE IS" with no warranty or guarantees, expressed or implied, No operational assessments have been made by DPA Auctions on this item, it has been photographed ONLY.



---

### #35 - 2011 GMC Acadia SLT (TR4710)

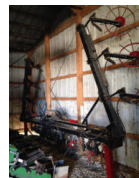
2011 GMC Acadia SLT (TR4710), 3.6L VVT gas engine, automatic transmission, AWD, 3rd row seating, leather, rear radio and temperature controls, power seats, heated front seats, power windows, power locks, AM/FM CD player, tow button, DVD player, steering wheel controls, Cruise control, 139,413 miles. Notes: Car has had used car inspection at dealership and filters were changed. Over \$1600 in work done. Including Steering wheel bushing, front end alignment, replaced rear parking sensors, replace out put oil seal. Item Location: Fremont, NE 68025 Equipment Sold "AS IS, WHERE IS": All equipment/property is sold "AS IS, WHERE IS" with no warranty or guarantees, expressed or implied, No operational assessments have been made by DPA Auctions on this item, it has been photographed ONLY.



---

### #36 - Cady Wheel Spoke Injector (PZ9000)

Cady Wheel Spoke Injector (PZ9000), Cady Wheel spoke injector, 12 row 30", 3-point, 3 section servo valves, individual row ball flow indicators, new spokes, some spare parts. Notes: Item Location: Wellman, IA 52356 Equipment Sold "AS IS, WHERE IS": All equipment/property is sold "AS IS, WHERE IS" with no warranty or guarantees, expressed or implied, No operational assessments have been made by DPA Auctions on this item, it has been photographed ONLY.



---

### #37 - 2004 Crownline 260 Ex (NP6575)

2004 Crownline 260 Ex (NP6575), boat is 28' long (total- including 2' deck) and is rated for 14 adults, just put in a brand new Blue Tooth sound system last summer with JBL marine speakers and amp ( \$3,000 value and have receipt ), this boat has a bathroom, mini bar and a table for dining! New 496 Mag rebuilt engine only has 14 hours on it and comes with a 1 year warranty!!! This boat has dual exhaust and a huge engine for a deck boat! Will throw in all the life jackets, ski rope and 3 person tube (\$1,000 value!) No rips or tears in upholstery! Boat comes with custom trailer, two snap on covers, canvas full boat cover, custom carpet, cooler, custom trailer and one year old battery. (Dual battery hookup!!). Notes: Item Location: Tekamah, NE 68061 Equipment Sold "AS IS, WHERE IS": All equipment/property is sold "AS IS, WHERE IS" with no warranty or guarantees, expressed or implied, No operational assessments have been made by DPA Auctions on this item, it has been photographed ONLY.



---

### #38 - Ranco Dry Blender (DR8575)

Ranco Dry Blender (DR8575), 3 compartment dry fertilizer blender, electric drive motors, control panel. Notes: Is out, removed ready to load. Item Location: Archer, IA 51231 Equipment Sold "AS IS, WHERE IS": All equipment/property is sold "AS IS, WHERE IS" with no warranty or guarantees, expressed or implied, No operational assessments have been made by DPA Auctions on this item, it has been photographed ONLY.



---

### #39 - Ranco Micro Bin (DR8576)

Ranco Micro Bin (DR8576), micro nutrient ingredient bin, 1.5hp electric drive motor, has raised stand included. Notes: Item Location: Archer, IA 51231 Equipment Sold "AS IS, WHERE IS": All equipment/property is sold "AS IS, WHERE IS" with no warranty or guarantees, expressed or implied, No operational assessments have been made by DPA Auctions on this item, it has been photographed ONLY.



---

### #40 - Ranco Micro Bin (DR8577)

Ranco Micro Bin (DR8577), micro nutrient ingredient bin, 1.5hp electric drive motor, has raised stand included. Notes: Item Location: Archer, IA 51231 Equipment Sold "AS IS, WHERE IS": All equipment/property is sold "AS IS, WHERE IS" with no warranty or guarantees, expressed or implied, No operational assessments have been made by DPA Auctions on this item, it has been photographed ONLY.



---

### #41 - Undercar Unloader (DR8578)

Undercar Unloader (DR8578), fertilizer undercar unloader, twin auger hopper, 10hp electric motor. Notes: Item Location: Archer, IA 51231 Equipment Sold "AS IS, WHERE IS": All equipment/property is sold "AS IS, WHERE IS" with no warranty or guarantees, expressed or implied, No operational assessments have been made by DPA Auctions on this item, it has been photographed ONLY.



---

### #42 - NEW NEVER USED Hitch Doc 110 Fuel Pod (TR0008)

NEW NEVER USED Hitch Doc 110 Fuel Pod (TR0008), 110 gal, 44" length, 56.5" Width, 37" overall height, Empty 470 lbs, loaded 1250 lbs, 12GPM 12 volt pump, 1" x 20' hose, Multiple Lifting Options, Durable Storage Compartment, 12 volt fuel pump with 12 GPM, Multiple Hose Position Variations, Heavy Duty 12V battery kit, 10 Micron Fuel Filter, Powder-Coat Finish, drain plug, 10 gauge double seam welds, dual baffled, fuel gauge. Notes: Includes 25 gallon DEF System, poly tank, DEF approved pump and 3/4" x 20' hose/nozzle. Fits seed box tenders and standard truck beds. Please allow at least 1 week for delivery. Item Location: Fremont, NE 68025 Equipment Sold "AS IS, WHERE IS": All equipment/property is sold "AS IS, WHERE IS" with no warranty or guarantees, expressed or implied, No operational assessments have been made by DPA Auctions on this item, it has been photographed ONLY.



---

### #43 - 2007 Ford Five Hundred SEL Sedan (TR4711)

2007 Ford Five Hundred SEL Sedan (TR4711), gas engine, automatic transmission, leather interior, power windows, power locks, AM/FM CD player, heated seats, dual temperature control, cruise control, steering wheel controls, 97,479 miles. Notes: Item Location: Fremont, NE 68025 Equipment Sold "AS IS, WHERE IS": All equipment/property is sold "AS IS, WHERE IS" with no warranty or guarantees, expressed or implied, No operational assessments have been made by DPA Auctions on this item, it has been photographed ONLY.



---

### #44 - 2005 Capacity TJ5000 Spotter Truck (NP6583, Unit 4-465)

2005 Capacity TJ5000 Spotter Truck (NP6583, Unit 4-465), Vista Cab, Cummins Model 6B ReCon diesel engine 152HP (500 hrs on Re-Con Cummins diesel, S/N 60279218), Allison automatic transmission, heat, air conditioning, 5th wheel cab controls, Firefox fuel tank heater, air dryer, stand up cab, 5th wheel plate, 11R22.5 rear tires, 116" wheel base, shows 14,370 hours. Notes: This truck had a cracked windshield when pictured but has been fixed since (see photos). Please call Cummins with engine serial number (60279218) for specific details (816-414-8200). Buyer's are advised to do own due diligence on warranty details. NO TITLE. Item Location: La Belle, MO 63447 Equipment Sold "AS IS, WHERE IS": All equipment/property is sold "AS IS, WHERE IS" with no warranty or guarantees, expressed or implied, No operational assessments have been made by DPA Auctions on this item, it has been photographed ONLY.



---

### #45 - Jump Auger (DR8579)

Jump Auger (DR8579), incline jump auger, bottom hopper, electric drive motor. Notes: Item Location: Archer, IA 51231 Equipment Sold "AS IS, WHERE IS": All equipment/property is sold "AS IS, WHERE IS" with no warranty or guarantees, expressed or implied, No operational assessments have been made by DPA Auctions on this item, it has been photographed ONLY.



---

### #46 - Liquid Impregnation (DR8580)

Liquid Impregnation (DR8580), poly liquid impregnation tank. Notes: Item Location: Archer, IA 51231 Equipment Sold "AS IS, WHERE IS": All equipment/property is sold "AS IS, WHERE IS" with no warranty or guarantees, expressed or implied, No operational assessments have been made by DPA Auctions on this item, it has been photographed ONLY.



---

### #47 - Pumps & Meters (DR8585)

Pumps & Meters (DR8585), (2) metered liquid pumps. Notes: Item Location: Archer, IA 51231 Equipment Sold "AS IS, WHERE IS": All equipment/property is sold "AS IS, WHERE IS" with no warranty or guarantees, expressed or implied, No operational assessments have been made by DPA Auctions on this item, it has been photographed ONLY.



---

### #48 - 2014 RoGator RG1100 (NJP1210 Unit14)

2014 RoGator RG1100 (NJP1210 Unit14), diesel engine, hydrostatic transmission, 1100 gallon stainless steel tank, 90' boom, 4 way nozzle bodies, 135 gallon saddle mount rinse tank, poly chemical inductor, AM/FM CD radio, heat/air conditioning, tires 380/90R46, shows 1621 hours. Notes: Item Location: Stevens Point, WI 54482 Equipment Sold "AS IS, WHERE IS": All equipment/property is sold "AS IS, WHERE IS" with no warranty or guarantees, expressed or implied, No operational assessments have been made by DPA Auctions on this item, it has been photographed ONLY.



---

### #49 - Poly Inductors (DR8587)

Poly Inductors (DR8587), (3) poly liquid chemical inductors, (2) have Kahler control boxes. Notes: Item Location: Archer, IA 51231 Equipment Sold "AS IS, WHERE IS": All equipment/property is sold "AS IS, WHERE IS" with no warranty or guarantees, expressed or implied, No operational assessments have been made by DPA Auctions on this item, it has been photographed ONLY.



---

### #50 - Cone Bottom (DR8591)

Cone Bottom (DR8591), 3000 gallon poly cone bottom tank and stand. Notes: Item Location: Archer, IA 51231 Equipment Sold "AS IS, WHERE IS": All equipment/property is sold "AS IS, WHERE IS" with no warranty or guarantees, expressed or implied, No operational assessments have been made by DPA Auctions on this item, it has been photographed ONLY.



---

### #51 - Air Compressor (DR8582)

Air Compressor (DR8582), shop air compressor, electric motor, 60 gallon tank. Notes: Item Location: Archer, IA 51231 Equipment Sold "AS IS, WHERE IS": All equipment/property is sold "AS IS, WHERE IS" with no warranty or guarantees, expressed or implied, No operational assessments have been made by DPA Auctions on this item, it has been photographed ONLY.



---

### #52 - 5th Wheel (DR8583)

5th Wheel (DR8583), truck stationary 5th wheel plate. Notes: Item Location: Archer, IA 51231 Equipment Sold "AS IS, WHERE IS": All equipment/property is sold "AS IS, WHERE IS" with no warranty or guarantees, expressed or implied, No operational assessments have been made by DPA Auctions on this item, it has been photographed ONLY.



---

### #53 - Soil Probe (DR8586)

Soil Probe (DR8586), hydraulic soil probe, self contained hydraulics w/Honda gas engine. Notes: Item Location: Archer, IA 51231 Equipment Sold "AS IS, WHERE IS": All equipment/property is sold "AS IS, WHERE IS" with no warranty or guarantees, expressed or implied, No operational assessments have been made by DPA Auctions on this item, it has been photographed ONLY.



---

### #54 - 1994 Terra Gator 1803 Dry Floater (PZ9005)

1994 Terra Gator 1803 Dry Floater (PZ9005), Cummins 8.3L diesel engine, Allison automatic transmission, air conditioning, heat, Am/Fm radio, Chandler 304 stainless steel dry spreader box (S/N 11857), mesh chain conveyor, twin spinner, all hydraulic, PrimeX 66x43.00-25 tires @ 85%, Mid Tech TASC-6100 controller, shows 6085 hours, 58,873 miles. Notes: Great running machine been through the shop all serviced. Runs down the road great. Item Location: Clear Lake, IA 50428 Equipment Sold "AS IS, WHERE IS": All equipment/property is sold "AS IS, WHERE IS" with no warranty or guarantees, expressed or implied, No operational assessments have been made by DPA Auctions on this item, it has been photographed ONLY.



---

### #55 - NEW NEVER USED Hitch Doc 110 Fuel Pod (TR0008)

NEW NEVER USED Hitch Doc 110 Fuel Pod (TR0008), 110 gal, 44" length, 56.5" Width, 37" overall height, Empty 470 lbs, loaded 1250 lbs, 12GPM 12 volt pump, 1" x 20' hose, Multiple Lifting Options, Durable Storage Compartment, 12 volt fuel pump with 12 GPM, Multiple Hose Position Variations, Heavy Duty 12V battery kit, 10 Micron Fuel Filter, Powder-Coat Finish, drain plug, 10 gauge double seam welds, dual baffled, fuel gauge. Notes: Includes 25 gallon DEF System, poly tank, DEF approved pump and 3/4" x 20' hose/nozzle. Fits seed box tenders and standard truck beds. Please allow at least 1 week for delivery. Item Location: Fremont, NE 68025 Equipment Sold "AS IS, WHERE IS": All equipment/property is sold "AS IS, WHERE IS" with no warranty or guarantees, expressed or implied, No operational assessments have been made by DPA Auctions on this item, it has been photographed ONLY.



---

### #56 - 2002 Chevrolet Suburban Z71 (TR4712)

2002 Chevrolet Suburban Z71 (TR4712), 5.3 L gas engine, automatic transmission, nerf bars, grill guard, 4x4, luggage rack, 3rd row seating, tow hitch, leather seating, Rear FM/AM CD/Cassette, sun roof, power seats, power windows and locks, heated seats, 212,523 miles. Notes: Item Location: Fremont, NE 68025 Equipment Sold "AS IS, WHERE IS": All equipment/property is sold "AS IS, WHERE IS" with no warranty or guarantees, expressed or implied, No operational assessments have been made by DPA Auctions on this item, it has been photographed ONLY.



---

### #57 - 2000 Terra Gator 9103 Dry Floater (TR4730)

2000 Terra Gator 9103 Dry Floater (TR4730), Cat C10 10.3L 400HP engine, Eaton -Fuller torqueboost 18 speed transmission, heat, air conditioning, Am/Fm cassette radio, front tires Michelin 1050/50R32 50%, rear tires Michelin 1050/50R32 70%, tire wear 30%-50% on rears, New Leader L4000 HP 14' dry spreader box, 304 stainless steel, dual spinners, #4 boc conveyor, no controller, set up for a Viper Pro, RGL 600 lightbar, Raven WAAS GPS, shows 79,807 miles, shows 6,639 hours. Notes: Item Location: Brookston, IN 47923 Equipment Sold "AS IS, WHERE IS": All equipment/property is sold "AS IS, WHERE IS" with no warranty or guarantees, expressed or implied, No operational assessments have been made by DPA Auctions on this item, it has been photographed ONLY.



---

### #58 - Blender Drum (DR8608)

Blender Drum (DR8608), 8 ton stainless steel dry blender drum, has gear box NO MOTOR. Notes: Item Location: Belleville, IL 62222 Equipment Sold "AS IS, WHERE IS": All equipment/property is sold "AS IS, WHERE IS" with no warranty or guarantees, expressed or implied, No operational assessments have been made by DPA Auctions on this item, it has been photographed ONLY.



---

### #59 - Stainless Steel Bulks (DR8616)

Stainless Steel Bulks (DR8616), (2) 175 gallon stainless steel mini bulk shuttles, both have metered pumps, not sure if they work have been sitting. Notes: Item Location: Belleville, IL 62222 Equipment Sold "AS IS, WHERE IS": All equipment/property is sold "AS IS, WHERE IS" with no warranty or guarantees, expressed or implied, No operational assessments have been made by DPA Auctions on this item, it has been photographed ONLY.



---

### #60 - Raven SCS (DR8611)

Raven SCS (DR8611), SCS 4600 digital display monitor, took out of Hagie STS 12 and worked at that time. Notes: Item Location: Belleville, IL 62222 Equipment Sold "AS IS, WHERE IS": All equipment/property is sold "AS IS, WHERE IS" with no warranty or guarantees, expressed or implied, No operational assessments have been made by DPA Auctions on this item, it has been photographed ONLY.



---

### #61 - 1961 Fisk Tank Mover (DR8610)

1961 Fisk Tank Mover (DR8610), single axle hydraulic tank mover, pump and cylinder work. Notes: Item Location: Belleville, IL 62222 Equipment Sold "AS IS, WHERE IS": All equipment/property is sold "AS IS, WHERE IS" with no warranty or guarantees, expressed or implied, No operational assessments have been made by DPA Auctions on this item, it has been photographed ONLY.



---

### #62 - 1981 International (DR8609)

1981 International (DR8609), diesel engine, 5 speed transmission, 2 speed rear end, single axle, 2800 gallon 3 compartment fuel body, LC metered PTO pump, hose reel, 22.5 tires. Notes: Truck was used this winter, metered accurately. Item Location: Belleville, IL 62222 Equipment Sold "AS IS, WHERE IS": All equipment/property is sold "AS IS, WHERE IS" with no warranty or guarantees, expressed or implied, No operational assessments have been made by DPA Auctions on this item, it has been photographed ONLY.





### #63 - 2012 Rogator RG1300 Sprayer

2012 Rogator RG1300 Sprayer, diesel engine, hydrostatic transmission, heat, air conditioning, Am/Fm CD radio, deluxe seat, air ride cab, 1,300 gallon stainless steel liquid system, 90' 5 section boom, top poly rinse tank, poly chemical inductor, 380/90R46 tires, Raven monitor, Viper Pro console with auto steer, Raven Steering, High Volume pump, Gator trax steering, front reload valve, shows 2404 hours. Notes: Item Location: Blue Hill, NE 68930 Equipment Sold "AS IS, WHERE IS": All equipment/property is sold "AS IS, WHERE IS" with no warranty or guarantees, expressed or implied, No operational assessments have been made by DPA Auctions on this item, it has been photographed ONLY.



### #64 - (1) Quincy QTS-5 Truck Mounted Compressor (NP6585)

(1) Quincy QTS-5 Truck Mounted Compressor (NP6585), with drive shaft. Notes: Item Location: Coal Valley, IL 61240 Equipment Sold "AS IS, WHERE IS": All equipment/property is sold "AS IS, WHERE IS" with no warranty or guarantees, expressed or implied, No operational assessments have been made by DPA Auctions on this item, it has been photographed ONLY.



### #65 - (4) Misc. Kenworth Tow Hooks (NP6586)

(4) Misc. Kenworth Tow Hooks (NP6586). Notes: Item Location: Coal Valley, IL 61240 Equipment Sold "AS IS, WHERE IS": All equipment/property is sold "AS IS, WHERE IS" with no warranty or guarantees, expressed or implied, No operational assessments have been made by DPA Auctions on this item, it has been photographed ONLY.



### #66 - 2017 Trail King Belly Dump Trailer (NP6462, Unit 77351)

2017 Trail King Belly Dump Trailer (NP6462, Unit 77351), Model TKBD15, tandem axle, spring suspension, 15' length, 15 yard capacity, 22.5 tires. Notes: This trailer has been damaged and has a SALVAGE TITLE, please see photos for condition and please contact seller before placing any bids. Item Location: Mitchell, SD 57301 Equipment Sold "AS IS, WHERE IS": All equipment/property is sold "AS IS, WHERE IS" with no warranty or guarantees, expressed or implied, No operational assessments have been made by DPA Auctions on this item, it has been photographed ONLY.



### #67 - 2016 Kenworth T800B Truck (NP6587, Unit 77414)

2016 Kenworth T800B Truck (NP6587, Unit 77414), Cummins ISX15 550 diesel engine, Fuller RTLO18913A 13 speed transmission, 72" Aerocab flat top sleeper, tandem axle, air ride suspension, 5th wheel plate, dual exhaust, truck has approx. 230,000 miles. Sahling Kenworth of Kearney, NE dropped the pan and refilled all the fluids and the engine is okay. Notes: This truck has extensive damage and has a SALVAGE TITLE. Please contact seller for more details. Item Location: Kearney, NE 68847 Equipment Sold "AS IS, WHERE IS": All equipment/property is sold "AS IS, WHERE IS" with no warranty or guarantees, expressed or implied, No operational assessments have been made by DPA Auctions on this item, it has been photographed ONLY.



### #68 - 2006 Utility Dry Van Trailer (NP6588, Unit 77414)

2006 Utility Dry Van Trailer (NP6588, Unit 77414), approx. 53' length, tandem axle. GVWR 65,000lbs. Notes: This trailer has extensive damage and has a SALVAGE TITLE. Please contact seller for more details. Item Location: Omaha, NE 68127 Equipment Sold "AS IS, WHERE IS": All equipment/property is sold "AS IS, WHERE IS" with no warranty or guarantees, expressed or implied, No operational assessments have been made by DPA Auctions on this item, it has been photographed ONLY.



### #69 - NEW Hitch Doc Fuel Trailer (TR001)

NEW Hitch Doc Fuel Trailer (TR001), Model HFC500, 10 gauge double seam welded tank, full length baffled tanks, 2" anti-slosh tank filler cap and vent, 1-1/2" drain plug, electric brakes w/ breakaway system and safety chains, liquid - two component paint and primer, 12 GPM 12 volt fuel pump, 1" x20' hose, 10 Micron filter, 7,000lbs square lift jack, dual torsion axles: 3,500lbs, DOT approved incandescent tail lights, stop lights, front and rear side marker lights, adjustable 2-5/16" ball hitch, fuel gauge with infinite fuel level indicator, 205/75/15 tires and rims, bolt on fenders. Notes: Please allow 2-3 weeks for delivery. Item Location: Fremont, NE 68025 Equipment Sold "AS IS, WHERE IS": All equipment/property is sold "AS IS, WHERE IS" with no warranty or guarantees, expressed or implied, No operational assessments have been made by DPA Auctions on this item, it has been photographed ONLY.



### #70 - 1995 Ford F-150 XLT (TR4713)

1995 Ford F-150 XLT (TR4713), 5.0 gas engine, automatic transmission, bed liner, AM/FM CD radio, heat/AC, 4x4, cruise control, steering wheel controls, power windows/locks, nerf bars. Notes: SALVAGE TITLE. Item Location: Fremont, NE 68025 Equipment Sold "AS IS, WHERE IS": All equipment/property is sold "AS IS, WHERE IS" with no warranty or guarantees, expressed or implied, No operational assessments have been made by DPA Auctions on this item, it has been photographed ONLY.



---

### #71 - 1995 IHC Loral Easy Rider 2710 Dry Air Flow Floater (PZ9006)

1995 IHC Loral Easy Rider 2710 Dry Air Flow Floater (PZ9006), DT530 diesel engine, Eaton Fuller 10 speed transmission, air conditioning, heat, Am/Fm radio, Air Spreader dry air flow system, 60' boom, foam marker, stainless steel foam marker tank, 48" front tires @ 50%, 66" rear tires @ 65%, Mid Tech TASC-6500 controller, shows 4047 hours, 55,183 miles. Notes: Cab is solid, frame is really clean, little rust, runs down the road great, been through the shop and all checked out. Item Location: Clear Lake, IA 50428 Equipment Sold "AS IS, WHERE IS": All equipment/property is sold "AS IS, WHERE IS" with no warranty or guarantees, expressed or implied, No operational assessments have been made by DPA Auctions on this item, it has been photographed ONLY.



---

### #73 - Agrilead Custom Coverage Red (PZ9010)

Agrilead Custom Coverage Red (PZ9010), 150 gallons of Agrilead Custom Coverage Red, custom mixed polymer & colorant seed treatment additive. Notes: Item Location: Blanchard, IA 51630 Equipment Sold "AS IS, WHERE IS": All equipment/property is sold "AS IS, WHERE IS" with no warranty or guarantees, expressed or implied, No operational assessments have been made by DPA Auctions on this item, it has been photographed ONLY.



---

### #74 - Air Compressor (PZ9009)

Air Compressor (PZ9009), Puma Industrial air compressor, Honda GX390 13.0 gas engine. Notes: Item Location: Blanchard, IA 51630 Equipment Sold "AS IS, WHERE IS": All equipment/property is sold "AS IS, WHERE IS" with no warranty or guarantees, expressed or implied, No operational assessments have been made by DPA Auctions on this item, it has been photographed ONLY.



---

### #75 - 2009 JD 4930 Sprayer (TR4699)

2009 JD 4930 Sprayer (TR4699), JD diesel engine, hydrotat transmission, 1200 gallon stainless steel tank, 120' booms, JD monitor, Heat/AC, AM/FM CD player, foam markers, (2) sets of tires & (2) Sets of fenders, Floats: 620/70R46 with fenders, Row Crop: 380/105R50 with fenders, 5591 hours. Notes: Item Location: Pocahontas, IA 50574 Equipment Sold "AS IS, WHERE IS": All equipment/property is sold "AS IS, WHERE IS" with no warranty or guarantees, expressed or implied, No operational assessments have been made by DPA Auctions on this item, it has been photographed ONLY.



---

### #76 - 2008 Case Floater 3520 Liquid Floater (TR4220)

2008 Case Floater 3520 Liquid Floater (TR4220), Diesel engine, Allison automatic transmission, Raven Smart Trax, Viper Pro monitor included, 90' booms, Case 610 Liquid system, 2400 gallon Stainless tank, AM/FM Cd player, Heat/AC, 1000/50R25 front tire, 1050/50R25 rear tires, 4266 hours. Notes: Item Location: Cartersville, IA 50469 Equipment Sold "AS IS, WHERE IS": All equipment/property is sold "AS IS, WHERE IS" with no warranty or guarantees, expressed or implied, No operational assessments have been made by DPA Auctions on this item, it has been photographed ONLY.



---

### #77 - DMI 4200 II Tool Bar (PZ8613, 21007)

DMI 4200 II Tool Bar (PZ8613, 21007), DMI 4200 II 13 knife pull type tool bar, coulters, double disc sealers, Raven Super cooler, Dempster ground driven pump, hydraulic wings, 12.5L-15 flotation tires, rear hitch. Notes: Item Location: Greene, IA 50636 Equipment Sold "AS IS, WHERE IS": All equipment/property is sold "AS IS, WHERE IS" with no warranty or guarantees, expressed or implied, No operational assessments have been made by DPA Auctions on this item, it has been photographed ONLY.



---

### #78 - 2002 B&B Sprayer Trailer (PZ8773)

2002 B&B Sprayer Trailer (PZ8773), spread axle, fold out outriggers, pintle hitch, air brakes, 235/75R17.5 tires. Notes: Item Location: Winamac, IN 46996 Equipment Sold "AS IS, WHERE IS": All equipment/property is sold "AS IS, WHERE IS" with no warranty or guarantees, expressed or implied, No operational assessments have been made by DPA Auctions on this item, it has been photographed ONLY.



---

### #79 - 2015 Rogator RG1300B Sprayer, (TR4730)

2015 Rogator RG1300B Sprayer, (TR4730) diesel engine, hydrostatic transmission, heat, air conditioning, Am/Fm CD radio, deluxe seat, air ride cab, 1,300 gallon stainless steel liquid system, 90' 5 section boom, top poly rinse tank, poly chemical inductor, 380/90R46 tires, Raven monitor, Viper Pro console with auto steer, standard pump, auto tracking for wheel spacing, slingshot ready, gator trax 4 wheel package, front reload valve, shows 710 hours. Notes: Item Location: Blue Hill, NE 68930 Equipment Sold "AS IS, WHERE IS": All equipment/property is sold "AS IS, WHERE IS" with no warranty or guarantees, expressed or implied, No operational assessments have been made by DPA Auctions on this item, it has been photographed ONLY.



### #80 - 1977 John Deere 4230

1977 John Deere 4230 serial #4230P 041776R, Engine runs very well no blow-by, transmission shifts crisp without slipping or hesitation, hydraulics are quiet, 3 point, pto, dual remotes all work, tach and hour meter work, hours are original, 18.4-30 tires are original, tractor came off an acreage from Oregon. It does have some dents and damage, lights and a couple gauges do not work. Notes: Item Location: Wellman, IA 52356 Equipment Sold "AS IS, WHERE IS": All equipment/property is sold "AS IS, WHERE IS" with no warranty or guarantees, expressed or implied, No operational assessments have been made by DPA Auctions on this item, it has been photographed ONLY.



### #81 - 1977 Polar Transport Trailer (TR4180)

1977 Polar Transport Trailer (TR4180), 4450 gal insulated tank, straight barrel, tandem axle, spring suspension, fenders, 11R22.5 tires, steel rims, (ASSET #65529). Notes: Item Location: Mason City, IA 50401 Equipment Sold "AS IS, WHERE IS": All equipment/property is sold "AS IS, WHERE IS" with no warranty or guarantees, expressed or implied, No operational assessments have been made by DPA Auctions on this item, it has been photographed ONLY.



### #82 - 2002 Terra Gator 8104 Dry Air Flow Floater (PZ9007)

2002 Terra Gator 8104 Dry Air Flow Floater (PZ9007), John Deere diesel engine, Terra Shift transmission, air conditioning, heat, Am/Fm radio, Air Max 1000 single bin dry air flow system, Granny/Micro nutrient bin, 70' stainless steel boom, foam marker, stainless steel foam marker tank, 48x31.00-20 front tires @ 40%, 66x43.00-25 rear tires @ 75%, Raven SCS661 controller, Raven Cruiser light bar, shows 3700 hours. Notes: Real nice Terra Gator, minimum rust around, runs down the road great, been through the shop and all checked out. Item Location: Clear Lake, IA 50428 Equipment Sold "AS IS, WHERE IS": All equipment/property is sold "AS IS, WHERE IS" with no warranty or guarantees, expressed or implied, No operational assessments have been made by DPA Auctions on this item, it has been photographed ONLY.



### #82A - (4) Goodyear DT800 Row Crop Tires/Rims (NP6602)

(4) Goodyear DT800 Row Crop Tires/Rims (NP6602), size 320/90R50, 161A8-161/B, 12 bolt rim pattern, (1) tire @ 80-85%, (3) tires @ 35-40%, came off John Deere 4830 sprayer, always stored inside when not being used. Notes: Item Location: Fort Dodge, IA 50501 Equipment Sold "AS IS, WHERE IS": All equipment/property is sold "AS IS, WHERE IS" with no warranty or guarantees, expressed or implied, No operational assessments have been made by DPA Auctions on this item, it has been photographed ONLY.



### #83 - 2000 Caterpillar NOR3OP Forklift (PD738)

2000 Caterpillar NOR3OP Forklift (PD738), 36 volts, 1600 pounds, triple mast from 107 inches to 240 inches, 6454 hours, height 107", width 41", length 77", good differential, good hydraulics, hydraulic lift cylinder has a little seepage, good mast channels, brakes are ok, good sheet metal, back fiberglass cover good, everything works and operates on unit. Notes: Item Location: Saint Louis, MO 63132 Equipment Sold "AS IS, WHERE IS": All equipment/property is sold "AS IS, WHERE IS" with no warranty or guarantees, expressed or implied, No operational assessments have been made by DPA Auctions on this item, it has been photographed ONLY.



### #84 - 2007 Wilson Hopper (NJP1214 Unit16094)

2007 Wilson Hopper (NJP1214 Unit16094), 42' grain hopper, 66" sides, ag hoppers, Shur-Lok roll over tarp, tires 445/50R22.5 super singles, aluminum wheels. Notes: Item Location: Stevens Point, WI 54482 Equipment Sold "AS IS, WHERE IS": All equipment/property is sold "AS IS, WHERE IS" with no warranty or guarantees, expressed or implied, No operational assessments have been made by DPA Auctions on this item, it has been photographed ONLY.



### #85 - 2007 Timpte Hopper (NJP1215 Unit12205)

2007 Timpte Hopper (NJP1215 Unit12205), 42' grain hopper, 66" sides, ag hoppers, scale-o-matic air adjust, Shur-Lok roll over tarp, tires 11R24.5. Notes: Item Location: Stevens Point, WI 54482 Equipment Sold "AS IS, WHERE IS": All equipment/property is sold "AS IS, WHERE IS" with no warranty or guarantees, expressed or implied, No operational assessments have been made by DPA Auctions on this item, it has been photographed ONLY.



### #86 - 2005 IHC 9400 (NJP1211 Unit 16093)

2005 IHC 9400 (NJP1211 Unit 16093), Cat C-15 diesel engine, 10 speed transmission, air ride suspension, tandem axel full screw, air lift tag axle, 16 ton stainless steel hydraulic dry tender box, roll over tarp, rear discharge auger, engine brake, air dump valve, dual aluminum fuel tanks, AM/FM CD radio, heat, cruise control, dual power mirrors, air conditioning, rear ag bumper, 295/75R22.5 tires, outside aluminum wheels. Notes: Item Location: Stevens Point, WI 54482 Equipment Sold "AS IS, WHERE IS": All equipment/property is sold "AS IS, WHERE IS" with no warranty or guarantees, expressed or implied, No operational assessments have been made by DPA Auctions on this item, it has been photographed ONLY.



---

### #87 - 2011 IHC Pro Star (NJP1212 Unit514)

2011 IHC Pro Star (NJP1212 Unit514), Cummins diesel engine, 10 speed transmission, air ride suspension, tandem axle full screw, 16 ton hydraulic stainless steel Doyle dry tender box, roll over tarp, rear discharge auger, dual aluminum fuel tanks, power windows and lockets, AM/FM CD radio, cruise control, heat/air conditioning, 295/75R22.5 tires, outside aluminum wheels. Notes: Item Location: Stevens Point, WI 54482 Equipment Sold "AS IS, WHERE IS": All equipment/property is sold "AS IS, WHERE IS" with no warranty or guarantees, expressed or implied, No operational assessments have been made by DPA Auctions on this item, it has been photographed ONLY.



---

### #88 - Float tires (TR4731)

Float tires (TR4731), (4) 23.10R30 tires, 10 bolt rims, Titan brand, Came off 1074 RoGator. Notes: Item Location: Papillion, NE 68046 Equipment Sold "AS IS, WHERE IS": All equipment/property is sold "AS IS, WHERE IS" with no warranty or guarantees, expressed or implied, No operational assessments have been made by DPA Auctions on this item, it has been photographed ONLY.



---

### #89 - 2008 John Deere 4830 Sprayer (PZ9001)

2008 John Deere 4830 Sprayer (PZ9001), diesel engine, hydrostatic transmission, air conditioning, heat, Am/Fm radio, 1,025 gallon stainless steel liquid system, 90' boom, foam marker, poly foam marker tank, Alliance 380/90R46 tires, StarFire iTC globe, GreenStar 2, shows 4630 hours. Notes: Item Location: Roseville, IL 61473 Equipment Sold "AS IS, WHERE IS": All equipment/property is sold "AS IS, WHERE IS" with no warranty or guarantees, expressed or implied, No operational assessments have been made by DPA Auctions on this item, it has been photographed ONLY.



---

### #90 - 1998 Tyler 3330 Dry Floater (PZ9002)

1998 Tyler 3330 Dry Floater (PZ9002), diesel engine (blown engine), Allison automatic transmission, air conditioning, heat, Am/Fm radio, New Leader L3020 G4 dry spreader box, twin spinner, all hydraulic, EZ-Guide light bar, EZ Steer, shows 6,078 hours, 72,360 miles. Notes: Blown engine. Please call seller for more information. Item Location: Roseville, IL 61473 Equipment Sold "AS IS, WHERE IS": All equipment/property is sold "AS IS, WHERE IS" with no warranty or guarantees, expressed or implied, No operational assessments have been made by DPA Auctions on this item, it has been photographed ONLY.



---

### #91 - John Deere 544G Loader (PZ9003)

John Deere 544G Loader (PZ9003), John Deere 544G Loader, diesel engine, shuttle shift transmission, heat, cab, lights, bucket, 20.5-25 tires. Notes: Engine has issues, crack in windshield. Please call seller for more information. Item Location: Roseville, IL 61473 Equipment Sold "AS IS, WHERE IS": All equipment/property is sold "AS IS, WHERE IS" with no warranty or guarantees, expressed or implied, No operational assessments have been made by DPA Auctions on this item, it has been photographed ONLY.



---

### #91A - Hyster H40H Forklift

Hyster H40H Forklift, gas engine, shuttle shift, 2 stage, 4,000lb capacity, hours unknown, forklift runs but has a starter issue and may need new batteries. Notes: Forklift runs but has a starter issue and may need new batteries, please contact seller for more details. Item Location: Monmouth, IL 61462 Equipment Sold "AS IS, WHERE IS": All equipment/property is sold "AS IS, WHERE IS" with no warranty or guarantees, expressed or implied, No operational assessments have been made by DPA Auctions on this item, it has been photographed ONLY.



---

### #92 - 1977 Progress Transport Trailer (TR4182)

1977 Progress Transport Trailer (TR4182), 6000 gal tanker, 36" drop, 4" plumbing, tandem axle, spring suspension, fenders, 11R24.5 tires, steel rims, (ASSET# 65496). Notes: Item Location: Mason City, IA 50401 Equipment Sold "AS IS, WHERE IS": All equipment/property is sold "AS IS, WHERE IS" with no warranty or guarantees, expressed or implied, No operational assessments have been made by DPA Auctions on this item, it has been photographed ONLY.



---

### #93 - Sprayer Specialties Nurse Tank (PZ9004)

Sprayer Specialties Nurse Tank (PZ9004), Sprayer Specialties 1000 gallon poly liquid nurse tank, Honda 5.5 gas engine, inline strainer, poly chemical inductor, garden hose fill with float in tank, extended deck, tandem axle, 11L-15SL flotation tires. Notes: Item Location: Wellman, IA 52356 Equipment Sold "AS IS, WHERE IS": All equipment/property is sold "AS IS, WHERE IS" with no warranty or guarantees, expressed or implied, No operational assessments have been made by DPA Auctions on this item, it has been photographed ONLY.





---

### #94 - Orthman 6 Blade Tracker System (KMK488)

Orthman 6 Blade Tracker System (KMK488), Orthman, model 633-600, 6 blade tracker system, 9.5" blades, 30" row spacing, S/N: 4613-3. Notes: Used 4 years. Bearing update. Item Location: Wallace, NE 69169 Equipment Sold "AS IS, WHERE IS": All equipment/property is sold "AS IS, WHERE IS" with no warranty or guarantees, expressed or implied, No operational assessments have been made by DPA Auctions on this item, it has been photographed ONLY.



---

### #95 - 2009 Sanpan 2200 Limited (TR4019)

2009 Sanpan 2200 Limited (TR4019), Yamaha 40 hp 4 stroke, Electric Bimini top, Galley, ski tow bar, raised helm, Lowrance fish finder/depth finder, subwoofer, reclining seat with footrest, 215.7 hours. Notes: No trailer, new trailer can be purchased. Item Location: Valley, NE 68064 Equipment Sold "AS IS, WHERE IS": All equipment/property is sold "AS IS, WHERE IS" with no warranty or guarantees, expressed or implied, No operational assessments have been made by DPA Auctions on this item, it has been photographed ONLY.



---

### #96 - Hardee 3 Point Ditch Cutter (NP6592)

Hardee 3 Point Ditch Cutter (NP6592), PTO driven, hoses should probably be replaced, may need new blade, has not been used in a few years. Notes: Item Location: Hartsville, SC 29550 Equipment Sold "AS IS, WHERE IS": All equipment/property is sold "AS IS, WHERE IS" with no warranty or guarantees, expressed or implied, No operational assessments have been made by DPA Auctions on this item, it has been photographed ONLY.



---

### #96A - 2005 Terra Gator 9203 Dry Floater (PZ9030)

2005 Terra Gator 9203 Dry Floater (PZ9030), Cat C13 diesel engine 400HP, Terra Shift/Powershift transmission, 4 bin Soilcollection system with Granny/Micro bin, 70' boom, Michelin Mega Bib 1050/50R32 tires @ 50%, Falcon II controller, Outback STX hydraulic auto steer, GPS lightbar, roll over tarp, air ride cab, shows 45,418 miles, shows 4,991 hours. Notes: Item Location: Clear Lake, IA 50428 Equipment Sold "AS IS, WHERE IS": All equipment/property is sold "AS IS, WHERE IS" with no warranty or guarantees, expressed or implied, No operational assessments have been made by DPA Auctions on this item, it has been photographed ONLY.



---

### #97 - 2010 John Deere 637 Disk (NP6593)

2010 John Deere 637 Disk (NP6593), 29' 3" wide, hydraulic wings, 1 cylinder has slight leak, everything else is in good condition as far as seller knows. Notes: Item Location: Hartsville, SC 29550 Equipment Sold "AS IS, WHERE IS": All equipment/property is sold "AS IS, WHERE IS" with no warranty or guarantees, expressed or implied, No operational assessments have been made by DPA Auctions on this item, it has been photographed ONLY.



---

### #98 - 2009 Bigham Brothers Paratill (NP6594)

2009 Bigham Brothers Paratill (NP6594), 3 point, 8 row for 38" rows, good condition and works fine. Notes: Item Location: Hartsville, SC 29550 Equipment Sold "AS IS, WHERE IS": All equipment/property is sold "AS IS, WHERE IS" with no warranty or guarantees, expressed or implied, No operational assessments have been made by DPA Auctions on this item, it has been photographed ONLY.



---

### #99 - Forest City 4 Row Bed Shaper (NP6595)

Forest City 4 Row Bed Shaper (NP6595), 3 point, 38" rows, works great (used for bedding rows up), needs routine maintenance. Notes: Item Location: Hartsville, SC 29550 Equipment Sold "AS IS, WHERE IS": All equipment/property is sold "AS IS, WHERE IS" with no warranty or guarantees, expressed or implied, No operational assessments have been made by DPA Auctions on this item, it has been photographed ONLY.



---

### #100 - 1978 Progress Transport Trailer (TR4181)

1978 Progress Transport Trailer (TR4181), 5500 gal tanker, 36" drop, 4" plumbing, tandem axle, spring suspension, fenders, 11R22.5 tires, steel rims, (ASSET #65498). Notes: Item Location: Mason City, IA 50401 Equipment Sold "AS IS, WHERE IS": All equipment/property is sold "AS IS, WHERE IS" with no warranty or guarantees, expressed or implied, No operational assessments have been made by DPA Auctions on this item, it has been photographed ONLY.



---

### #100A - (4) Firestone Radial 9000 Flotation Tires/Rims (NP6603)

(4) Firestone Radial 9000 Flotation Tires/Rims (NP6603), size 650/65R38, 166D, 12 bolt rim pattern, tread 95%, came off a John Deere 4830 sprayer, extremely good condition and have only been used on 700 acres. Notes: Item Location: Fort Dodge, IA 50501 Equipment Sold "AS IS, WHERE IS": All equipment/property is sold "AS IS, WHERE IS" with no warranty or guarantees, expressed or implied, No operational assessments have been made by DPA Auctions on this item, it has been photographed ONLY.



---

### #101 - 2013 White 8516 Planter (TR4725)

2013 White 8516 Planter (TR4725), Center Fill planter, 16 row, 30" with HD down pressure springs, V-closing wheels, row cleaners, 3 section shutoff, liquid fertilizer (2) tanks, with totally tubular, 2700 total acres on Agco touch screen monitor, markers, always shedded, bean and corn plates included. Notes: Item Location: Morris, MN 56267 Equipment Sold "AS IS, WHERE IS": All equipment/property is sold "AS IS, WHERE IS" with no warranty or guarantees, expressed or implied, No operational assessments have been made by DPA Auctions on this item, it has been photographed ONLY.



---

### #102 - 8 Row Bed Shaper (NP6596)

8 Row Bed Shaper (NP6596), 3 point, hydraulic wings, new hoses are needed, good condition. Notes: Item Location: Hartsville, SC 29550 Equipment Sold "AS IS, WHERE IS": All equipment/property is sold "AS IS, WHERE IS" with no warranty or guarantees, expressed or implied, No operational assessments have been made by DPA Auctions on this item, it has been photographed ONLY.



---

### #103 - 2009 Bigham Brothers 8 Row Hooded Sprayer (NP6597)

2009 Bigham Brothers 8 Row Hooded Sprayer (NP6597), set on 38" rows for cotton, hydraulic wings, may need new hoses. Notes: Item Location: Hartsville, SC 29550 Equipment Sold "AS IS, WHERE IS": All equipment/property is sold "AS IS, WHERE IS" with no warranty or guarantees, expressed or implied, No operational assessments have been made by DPA Auctions on this item, it has been photographed ONLY.



---

### #104 - 2005 Honda TRX 500 ATV (NP6598)

2005 Honda TRX 500 ATV (NP6598), gas engine, good condition, needs oil changed and new battery. Notes: Item Location: Hartsville, SC 29550 Equipment Sold "AS IS, WHERE IS": All equipment/property is sold "AS IS, WHERE IS" with no warranty or guarantees, expressed or implied, No operational assessments have been made by DPA Auctions on this item, it has been photographed ONLY.



---

### #105 - Reddick Equipment Trencher (NP6599)

Reddick Equipment Trencher (NP6599), PTO driven, 3 point, older model, worked well last time it was used. Notes: Item Location: Hartsville, SC 29550 Equipment Sold "AS IS, WHERE IS": All equipment/property is sold "AS IS, WHERE IS" with no warranty or guarantees, expressed or implied, No operational assessments have been made by DPA Auctions on this item, it has been photographed ONLY.



---

### #106 - 2011 GMC Sierra SLT Crew Cab Pickup (PZ9019, Unit 23628)

2011 GMC Sierra SLT Crew Cab Pickup (PZ9019, Unit 23628), 4x4, gas engine, automatic transmission, air conditioning, heat, Am/Fm CD stereo, cruise control, leather seats, heated seats, power windows & locks, power driver & passenger seats, dual climate control, bed liner, running boards, box cover, Good Year P265/65R18 tires, shows 183,386 miles. Notes: Very clean pickup, always serviced, may need U joints. Please call seller for further information. PLEASE ALLOW AT LEAST 60 DAYS FOR TITLE TRANSFER. Item Location: Wall Lake, IA 51466 Equipment Sold "AS IS, WHERE IS": All equipment/property is sold "AS IS, WHERE IS" with no warranty or guarantees, expressed or implied, No operational assessments have been made by DPA Auctions on this item, it has been photographed ONLY.



---

### #106A - 2014 John Deere 6125R Tractor (NP6604)

2014 John Deere 6125R Tractor (NP6604), John Deere diesel engine, 16-16 power quad transmission, left hand reverser, Premium cab with buddy seat, heat, air conditioning, cold start package, 3 SCV's, drawbar hammer strap, 540/1000 shifttable PTO, John Deere H310 front end loader w/ bucket, electric telescoping mirrors, 420/85R24 front tires, 460/85R38 rear tires, shows 983 hours. Notes: Not Auto Trac Ready. Item Location: Perryville, MO 63775 Equipment Sold "AS IS, WHERE IS": All equipment/property is sold "AS IS, WHERE IS" with no warranty or guarantees, expressed or implied, No operational assessments have been made by DPA Auctions on this item, it has been photographed ONLY.



---

### #107 - Willmar Dry Tender Box (PZ9017)

Willmar Dry Tender Box (PZ9017), Willmar 16 ton dry tender box, rear discharge auger, all hydraulic, roll over tarp, fenders. Notes: Item Location: Rolfe, IA 50581 Equipment Sold "AS IS, WHERE IS": All equipment/property is sold "AS IS, WHERE IS" with no warranty or guarantees, expressed or implied, No operational assessments have been made by DPA Auctions on this item, it has been photographed ONLY.



---

### #108 - Willmar Dry Tender Box (PZ9012)

Willmar Dry Tender Box (PZ9012), Willmar 16 ton dry tender box, rear discharge auger, all hydraulic, fenders. Notes: Item Location: Ruthven, IA 51358 Equipment Sold "AS IS, WHERE IS": All equipment/property is sold "AS IS, WHERE IS" with no warranty or guarantees, expressed or implied, No operational assessments have been made by DPA Auctions on this item, it has been photographed ONLY.



### #108A - 1999 IH 2574 / Loral Easy Rider 3700 Dry Floater (PZ9067),

1999 IH 2574 / Loral Easy Rider 3700 Dry Floater (PZ9067), Cummins M11 diesel engine (400HP), Allison HD 4560 automatic transmission, 2 speed auxiliary transmission, planetary rear end, 2011 New Leader L4000 G4 dry spreader box (S/N 132815), 13' long, 409 stainless steel, belt over chain conveyor, 48" front tires 35%, 66" rear tires 50%, Raven 660 controller, shows 38,420 miles, shows 3,350 hours. Notes: Excellent chassis, LOTS of power, cab is solid, frame is clean, mounted 2011 New Leader L4000 G4 spinner on Loral. Item Location: Clear Lake, IA 50428 Equipment Sold "AS IS, WHERE IS": All equipment/property is sold "AS IS, WHERE IS" with no warranty or guarantees, expressed or implied, No operational assessments have been made by DPA Auctions on this item, it has been photographed ONLY.



### #109 - 2013 John Deere 4730 Sprayer (DR8649 Unit 7436)

2013 John Deere 4730 Sprayer (DR8649 Unit 7436), John Deere diesel engine, hydrostatic drive, 1000 gallon stainless steel liquid system, 100' boom, 5 way nozzle tips, stainless steel chemical inductor, StarFire iTC receiver, Greenstar controller, AM/FM CD radio, 380/90R46 row crop tires, shows 3451 hours. Notes: Sprayer has broken boom supports on ends. Item Location: Fancy Farm, KY 42039 Equipment Sold "AS IS, WHERE IS": All equipment/property is sold "AS IS, WHERE IS" with no warranty or guarantees, expressed or implied, No operational assessments have been made by DPA Auctions on this item, it has been photographed ONLY.



### #110 - McCall Conveyor (DR8636 Unit 6563)

McCall Conveyor (DR8636 Unit 6563), approximately 45'X12" stainless steel conveyor, electric drive motor, cleated belt. Notes: Item Location: Mayfield, KY 42066 Equipment Sold "AS IS, WHERE IS": All equipment/property is sold "AS IS, WHERE IS" with no warranty or guarantees, expressed or implied, No operational assessments have been made by DPA Auctions on this item, it has been photographed ONLY.



### #111 - Cat 922B (DR8635 Unit 6452)

Cat 922B (DR8635 Unit 6452), NON RUNNER, hydraulic payloader, diesel engine, 4X4 all wheel steer, 15.5-25 tires. Notes: Loader has not run for awhile. Item Location: Mayfield, KY 42066 Equipment Sold "AS IS, WHERE IS": All equipment/property is sold "AS IS, WHERE IS" with no warranty or guarantees, expressed or implied, No operational assessments have been made by DPA Auctions on this item, it has been photographed ONLY.



### #112 - Float Tires (DR8638)

Float Tires (DR8638), set of (4) Michelin 650/65R38 float tires, mounted on rims, rims off John Deere 4830. Notes: Item Location: Mayfield, KY 42066 Equipment Sold "AS IS, WHERE IS": All equipment/property is sold "AS IS, WHERE IS" with no warranty or guarantees, expressed or implied, No operational assessments have been made by DPA Auctions on this item, it has been photographed ONLY.



### #113 - 2006 Ford F150 (DR8637 Unit 6541)

2006 Ford F150 (DR8637 Unit 6541), gas engine, (has 1 BAD cylinder) extended cab, 4X4, bed mat, rear receiver hitch, Am/FM CD radio, power windows and locks, cruise control, 265/70R17 tires, shows 237,826 miles. Notes: Engine has a BAD cylinder. Pickup has just had full tune up, NEW battery, front end alignment, NEW brakes. Item Location: Mayfield, KY 42066 Equipment Sold "AS IS, WHERE IS": All equipment/property is sold "AS IS, WHERE IS" with no warranty or guarantees, expressed or implied, No operational assessments have been made by DPA Auctions on this item, it has been photographed ONLY.



### #114 - Pallet Racking (DR8648)

Pallet Racking (DR8648), approximately 32' of racking, 16' tall, includes shelving stats. Notes: Item Location: Mayfield, KY 42066 Equipment Sold "AS IS, WHERE IS": All equipment/property is sold "AS IS, WHERE IS" with no warranty or guarantees, expressed or implied, No operational assessments have been made by DPA Auctions on this item, it has been photographed ONLY.



### #115 - Roller Mill (PZ9011)

Roller Mill (PZ9011), Roller mill, 2 - Siemens 50 HP electric motors. Notes: Item Location: Ruthven, IA 51358 Equipment Sold "AS IS, WHERE IS": All equipment/property is sold "AS IS, WHERE IS" with no warranty or guarantees, expressed or implied, No operational assessments have been made by DPA Auctions on this item, it has been photographed ONLY.



---

### #116 - USC Seed Treater (PZ9015)

USC Seed Treater (PZ9015) USC ApronMaxx seed treater, 2 - Masterflex easy-load II, control panel, stainless steel tank, poly tank, Quality Plus model 518E conveyor S/N 51231, hopper tank with legs. Notes: Item Location: Bradgate, IA 50520 Equipment Sold "AS IS, WHERE IS": All equipment/property is sold "AS IS, WHERE IS" with no warranty or guarantees, expressed or implied, No operational assessments have been made by DPA Auctions on this item, it has been photographed ONLY.



---

### #117 - Quality Plus Conveyor (PZ9016)

Quality Plus Conveyor (PZ9016), Quality Plus model 530ET conveyor, electric motor, portable, ST175/80R tires. Notes: Item Location: Bradgate, IA 50520 Equipment Sold "AS IS, WHERE IS": All equipment/property is sold "AS IS, WHERE IS" with no warranty or guarantees, expressed or implied, No operational assessments have been made by DPA Auctions on this item, it has been photographed ONLY.



---

### #118 - Seed Bag Holder (PZ9013)

Seed Bag Holder (PZ9013), Steel seed bag holder, adjustable, legs. Notes: Item Location: Ruthven, IA 51358 Equipment Sold "AS IS, WHERE IS": All equipment/property is sold "AS IS, WHERE IS" with no warranty or guarantees, expressed or implied, No operational assessments have been made by DPA Auctions on this item, it has been photographed ONLY.



---

### #119 - Allis Chalmers B Tractor (PZ9014, Unit 605)

Allis Chalmers B Tractor (PZ9014, Unit 605), narrow front, gas engine, 3 speed transmission, PTO, 4.00-15 front tires, 12.4-24 rear tires, Art's Way model AI372B mower. Notes: Very weak clutch. Item Location: Ruthven, IA 51358 Equipment Sold "AS IS, WHERE IS": All equipment/property is sold "AS IS, WHERE IS" with no warranty or guarantees, expressed or implied, No operational assessments have been made by DPA Auctions on this item, it has been photographed ONLY.



---

### #120 - Parker Seed Wagon (PZ9022)

Parker Seed Wagon (PZ9022), Parker 250 bushel seed wagon, 2 compartment, self contained gas engine hydraulic system, cupped auger, tarp, auto steer gear, flotation tires. Notes: Item Location: Gladbrook, IA 50635 Equipment Sold "AS IS, WHERE IS": All equipment/property is sold "AS IS, WHERE IS" with no warranty or guarantees, expressed or implied, No operational assessments have been made by DPA Auctions on this item, it has been photographed ONLY.



---

### #120A - 2010 IHC 7400 WorkStar Dry Floater (PZ9068)

2010 IHC 7400 WorkStar Dry Floater (PZ9068), MaxxForce 9 300 HP diesel engine, Allison automatic transmission, 2 speed rear end, planetary rear end, air conditioning, heat, Am/Fm CD stereo, New Leader L4000 G4 - 13 dry spreader box (S/N 127561), 409 stainless steel, single bin, twin spinner, all hydraulic, belt over chain conveyor, roll over tarp, Brand New Alliance 48x25x20 front tires, Brand New Alliance 1000x50R25 rear tires, Raven Viper Pro controller, Graven GPS lightbar, shows 1519 hours, 29,499 miles. Notes: Item Location: Clear Lake, IA 50428 Equipment Sold "AS IS, WHERE IS": All equipment/property is sold "AS IS, WHERE IS" with no warranty or guarantees, expressed or implied, No operational assessments have been made by DPA Auctions on this item, it has been photographed ONLY.



---

### #121 - 1966 GMC 7500 Flatbed Truck (PZ9020)

1966 GMC 7500 Flatbed Truck (PZ9020), V6 401 gas engine, 5 speed transmission, 2 speed rear end, heat, radio, tandem tag axle, 18' flatbed, wood floor, hoist (rear hinge is bad), air brakes, 9.00-20 tires. Notes: Item Location: Gladbrook, IA 50635 Equipment Sold "AS IS, WHERE IS": All equipment/property is sold "AS IS, WHERE IS" with no warranty or guarantees, expressed or implied, No operational assessments have been made by DPA Auctions on this item, it has been photographed ONLY.



---

### #122 - 1998 Chevrolet S-10 Blazer (PZ9021)

1998 Chevrolet S-10 Blazer (PZ9021), 4x4, gas engine, automatic transmission, air conditioning, heat, Am/Fm cassette radio, power windows & locks, 4 door, leather, shows 155,353 miles. Notes: One owner. Has a voltage drain on battery. Item Location: Gladbrook, IA 50635 Equipment Sold "AS IS, WHERE IS": All equipment/property is sold "AS IS, WHERE IS" with no warranty or guarantees, expressed or implied, No operational assessments have been made by DPA Auctions on this item, it has been photographed ONLY.



---

### #123 - 1999 Kidron Trailer (PZ9018)

1999 Kidron Trailer (PZ9018), 1999 Kidron dry van office trailer, lights, control box, rear roll up door, 2 - curb doors, Ingersoll-Rand thermo king reefer unit, tandem axle, rear aluminum ramp, sliding tandems, 295/75R22.5 tires. Notes: Seller does not know anything about the working condition of the Thermo King unit. Item Location: Pocahontas, IA 50574 Equipment Sold "AS IS, WHERE IS": All equipment/property is sold "AS IS, WHERE IS" with no warranty or guarantees, expressed or implied, No operational assessments have been made by DPA Auctions on this item, it has been photographed ONLY.





---

### #124 - Pull Type Sprayer (TR4235)

Pull Type Sprayer (TR4235), 1000 gal poly tank, 12.4-42 row crop tires, monitor included as well, pump, was used last year. Notes: Item Location: Burr Oak, KS 66936 Equipment Sold "AS IS, WHERE IS": All equipment/property is sold "AS IS, WHERE IS" with no warranty or guarantees, expressed or implied, No operational assessments have been made by DPA Auctions on this item, it has been photographed ONLY.



---

### #125 - Yetter Coulters (TR4214)

Yetter Coulters (TR4214), (10) Yetter coulters. Notes: Item Location: Burr Oak, KS 66936 Equipment Sold "AS IS, WHERE IS": All equipment/property is sold "AS IS, WHERE IS" with no warranty or guarantees, expressed or implied, No operational assessments have been made by DPA Auctions on this item, it has been photographed ONLY.



---

### #126 - Gauge Wheels (TR4218)

Gauge Wheels (TR4218), Approx. 16 rows (32) total wheels. Notes: Item Location: Burr Oak, KS 66936 Equipment Sold "AS IS, WHERE IS": All equipment/property is sold "AS IS, WHERE IS" with no warranty or guarantees, expressed or implied, No operational assessments have been made by DPA Auctions on this item, it has been photographed ONLY.



---

### #127 - Davis 210 Backhoe Attachment (TR4233)

Davis 210 Backhoe Attachment (TR4233), 12" bucket, hydraulic, mounting bracket. Notes: Item Location: Burr Oak, KS 66936 Equipment Sold "AS IS, WHERE IS": All equipment/property is sold "AS IS, WHERE IS" with no warranty or guarantees, expressed or implied, No operational assessments have been made by DPA Auctions on this item, it has been photographed ONLY.



---

### #128 - 2013 John Deere 4830 Sprayer (DR8634 Unit 6450)

2013 John Deere 4830 Sprayer (DR8634 Unit 6450), John Deere diesel engine, hydrostatic drive, 1000 gallon stainless steel liquid system, 100' boom, 5 way nozzle tips, stainless steel chemical inductor, StarFire 3000 receiver, Greenstar controller, AM/FM CD radio, 380/90R46 row crop tires, shows 2456 hours. Notes: Machine will need batteries. Item Location: Mayfield, KY 42066 Equipment Sold "AS IS, WHERE IS": All equipment/property is sold "AS IS, WHERE IS" with no warranty or guarantees, expressed or implied, No operational assessments have been made by DPA Auctions on this item, it has been photographed ONLY.



---

### #129 - 2006 Ford F-250 (TR4513)

2006 Ford F-250 (TR4513), Lariat, Diesel V8 6.0L engine, automatic transmission, Heat/AC, AM/FM CD player, Cruise control, extended cab, sliding rear window, power windows, mirrors, locks, cloth interior, 231,012 miles. Notes: Changed the oil/filter, checked the brakes and tires, replaced the battery, etc, and topped off all fluids. Item Location: Fremont, NE 68025 Equipment Sold "AS IS, WHERE IS": All equipment/property is sold "AS IS, WHERE IS" with no warranty or guarantees, expressed or implied, No operational assessments have been made by DPA Auctions on this item, it has been photographed ONLY.



---

### #130 - Tyler Blender (RMC250)

Tyler Blender (RMC250), stainless steel horizontal dry fertilizer blender, NO SCALE indicator. Notes: Item Location: Belzoni, MS 39038 Equipment Sold "AS IS, WHERE IS": All equipment/property is sold "AS IS, WHERE IS" with no warranty or guarantees, expressed or implied, No operational assessments have been made by DPA Auctions on this item, it has been photographed ONLY.



---

### #131 - Adams Conveyor (RMC251 Unit 3616)

Adams Conveyor (RMC251 Unit 3616), 30' stainless steel conveyor, top electric drive motor, stationary stand. Notes: Item Location: Belzoni, MS 39038 Equipment Sold "AS IS, WHERE IS": All equipment/property is sold "AS IS, WHERE IS" with no warranty or guarantees, expressed or implied, No operational assessments have been made by DPA Auctions on this item, it has been photographed ONLY.



---

### #132 - 2007 Short Line Applicator (RMC249 Unit 1903)

2007 Short Line Applicator (RMC249 Unit 1903), 35' side dress liquid applicator, 1000 gallon poly liquid tank, hydraulic wings, ground drive pump. Notes: Item Location: Belzoni, MS 39038 Equipment Sold "AS IS, WHERE IS": All equipment/property is sold "AS IS, WHERE IS" with no warranty or guarantees, expressed or implied, No operational assessments have been made by DPA Auctions on this item, it has been photographed ONLY.



### #133 - Adams Dry Buggy (DR8658)

Adams Dry Buggy (DR8658), 5 ton stainless steel dry spreader buggy, ground drive web chain, PTO drive rear spinners, 12.5L-15 tires. Notes: Item Location: Kevil, KY 42053 Equipment Sold "AS IS, WHERE IS": All equipment/property is sold "AS IS, WHERE IS" with no warranty or guarantees, expressed or implied, No operational assessments have been made by DPA Auctions on this item, it has been photographed ONLY.



### #134 - Liquid Nurse Tank (DR8657)

Liquid Nurse Tank (DR8657), 1000 gallon crown poly liquid tank, tandem axle gear, gas engine DOES NOT RUN, Banjo liquid pump, 13.50-16.1 tires. Notes: Item Location: Kevil, KY 42053 Equipment Sold "AS IS, WHERE IS": All equipment/property is sold "AS IS, WHERE IS" with no warranty or guarantees, expressed or implied, No operational assessments have been made by DPA Auctions on this item, it has been photographed ONLY.



### #135 - Liquid Nurse Tank (DR8659)

Liquid Nurse Tank (DR8659), 1600 gallon crown poly liquid tank, triple axle gear, 2" front and rear valve, 11L-15 tires. Notes: Item Location: Kevil, KY 42053 Equipment Sold "AS IS, WHERE IS": All equipment/property is sold "AS IS, WHERE IS" with no warranty or guarantees, expressed or implied, No operational assessments have been made by DPA Auctions on this item, it has been photographed ONLY.



### #136 - Liquid Nurse Tank (DR8660)

Liquid Nurse Tank (DR8660), 1000 gallon crown poly liquid tank, tandem axle gear, 11L-15 tires. Notes: Tank does not leak. Item Location: Kevil, KY 42053 Equipment Sold "AS IS, WHERE IS": All equipment/property is sold "AS IS, WHERE IS" with no warranty or guarantees, expressed or implied, No operational assessments have been made by DPA Auctions on this item, it has been photographed ONLY.



### #139 - Clark Forklift (DR8625)

Clark Forklift (DR8625), LP gas engine, shuttle shift, 3000 lb dual stage mast forklift, hydraulic side shift, hard tire. Notes: Item Location: Selmer, TN 38375 Equipment Sold "AS IS, WHERE IS": All equipment/property is sold "AS IS, WHERE IS" with no warranty or guarantees, expressed or implied, No operational assessments have been made by DPA Auctions on this item, it has been photographed ONLY.



### #140 - 2003 Mack Vision (DR8623)

2003 Mack Vision (DR8623), Mack diesel engine, 10 speed transmission, tandem axle full screw, day cab, air ride suspension, air dump valve, engine brake, 21.5' of frame rail behind the cab, dual aluminum fuel tanks, cruise control, 22.5 tires, shows 628,347 miles. Notes: Left front fender damage. Item Location: Selmer, TN 38375 Equipment Sold "AS IS, WHERE IS": All equipment/property is sold "AS IS, WHERE IS" with no warranty or guarantees, expressed or implied, No operational assessments have been made by DPA Auctions on this item, it has been photographed ONLY.



### #142 - 2008 Chevy Silverado (DR8622)

2008 Chevy Silverado (DR8622), 5.3 liter gas engine, automatic transmission, crew cab, 4X4, bed liner, rear receiver hitch, power windows and locks, AM/FM CD radio, air conditioning, cruise control, 265/70R17 tires, shows 248,013 miles. Notes: Windshield has crack. Item Location: Selmer, TN 38375 Equipment Sold "AS IS, WHERE IS": All equipment/property is sold "AS IS, WHERE IS" with no warranty or guarantees, expressed or implied, No operational assessments have been made by DPA Auctions on this item, it has been photographed ONLY.



### #143 - 2001 Grain Belt Distributor (DR8675)

2001 Grain Belt Distributor (DR8675), model 18X6 FP 6 hole 18" outlets distributor, cable controls, taken off on pallet ready to load. Notes: This was only used a couple years. Item Location: Talmage, NE 68448 Equipment Sold "AS IS, WHERE IS": All equipment/property is sold "AS IS, WHERE IS" with no warranty or guarantees, expressed or implied, No operational assessments have been made by DPA Auctions on this item, it has been photographed ONLY.



### #144 - KBH Applicator (RMC245 Unit 7180)

KBH Applicator (RMC245 Unit 7180), 28' side dress applicator bar, 500 gallon poly liquid tank, ripple coulters, NO PUMP, 11L-15 tires. Notes: Item Location: Indianola, MS 38751 Equipment Sold "AS IS, WHERE IS": All equipment/property is sold "AS IS, WHERE IS" with no warranty or guarantees, expressed or implied, No operational assessments have been made by DPA Auctions on this item, it has been photographed ONLY.



### #145 - 1972 Kari Kool (RMC246 Unit 1385)

1972 Kari Kool (RMC246 Unit 1385), 5500 gallon stainless steel tandem axle liquid transport trailer, Honda gas engine, Banjo pump, 22.5 tires. Notes: Item Location: Indianola, MS 38751 Equipment Sold "AS IS, WHERE IS": All equipment/property is sold "AS IS, WHERE IS" with no warranty or guarantees, expressed or implied, No operational assessments have been made by DPA Auctions on this item, it has been photographed ONLY.



### #146 - Poly Liquid Tank (DR8650)

Poly Liquid Tank (DR8650), 6000 gallon poly flatbottom liquid tank, 2" valve. Notes: Item Location: Bardwell, KY 42023 Equipment Sold "AS IS, WHERE IS": All equipment/property is sold "AS IS, WHERE IS" with no warranty or guarantees, expressed or implied, No operational assessments have been made by DPA Auctions on this item, it has been photographed ONLY.



### #147 - Adams Applicator (DR8665 Unit 15600)

Adams Applicator (DR8665 Unit 15600), side dress applicator bar, 11 row, 800 gallon poly liquid tank, ground drive pump, 16.5L-16.1 tires. Notes: Missing coulters & knife on outside left. Item Location: East Prairie, MO 63845 Equipment Sold "AS IS, WHERE IS": All equipment/property is sold "AS IS, WHERE IS" with no warranty or guarantees, expressed or implied, No operational assessments have been made by DPA Auctions on this item, it has been photographed ONLY.



### #148 - 2005 Ford F250 (DR8661 Unit 15708)

2005 Ford F250 (DR8661 Unit 15708), Triton V-10 gas engine, (has a knock), automatic transmission, crew cab, 4X4, CM 9' steel flatbed w/headache rack, rear receiver hitch, gooseneck hitch, AM/FM CD radio, air conditioning, power windows & locks, full length running boards, 285/70R17 tires, cast aluminum wheels. Notes: Pickup WILL NEED battery. Engine has A KNOCK. Item Location: East Prairie, MO 63845 Equipment Sold "AS IS, WHERE IS": All equipment/property is sold "AS IS, WHERE IS" with no warranty or guarantees, expressed or implied, No operational assessments have been made by DPA Auctions on this item, it has been photographed ONLY.



### #149 - 2004 Ford F250 (DR8662 Unit 15704)

2004 Ford F250 (DR8662 Unit 15704), Triton V-10 gas engine, automatic transmission, crew cab, 4X4, full length nerf bars, rear receiver hitch, AM/FM CD radio, air conditioning, power windows and locks, pickup tool box, 285/75R16 tires. Notes: Some rear fender damage SEE pictures, pickup WILL NEED a battery. Item Location: East Prairie, MO 63845 Equipment Sold "AS IS, WHERE IS": All equipment/property is sold "AS IS, WHERE IS" with no warranty or guarantees, expressed or implied, No operational assessments have been made by DPA Auctions on this item, it has been photographed ONLY.



### #150 - 2002 Ford F150 (DR8663 Unit 15703)

2002 Ford F150 (DR8663 Unit 15703), gas engine, 5 speed transmission, 4X4, chrome nerf bars, rear receiver hitch, bed liner, AM/FM radio, cruise control, air conditioning, 255/70R16 tires. Notes: Pickup will need a battery. Item Location: East Prairie, MO 63845 Equipment Sold "AS IS, WHERE IS": All equipment/property is sold "AS IS, WHERE IS" with no warranty or guarantees, expressed or implied, No operational assessments have been made by DPA Auctions on this item, it has been photographed ONLY.



### #151 - 2004 Ford 250 (DR8664 Unit 15697)

2004 Ford 250 (DR8664 Unit 15697), gas engine, automatic transmission, 4X4, bed liner, rear receiver hitch, AM/FM radio, air conditioning, cruise control, power windows & locks, 285/75R16 tires, shows 225,406 miles. Notes: Brakes are pretty weak. Item Location: East Prairie, MO 63845 Equipment Sold "AS IS, WHERE IS": All equipment/property is sold "AS IS, WHERE IS" with no warranty or guarantees, expressed or implied, No operational assessments have been made by DPA Auctions on this item, it has been photographed ONLY.



### #152 - 2010 Merritt with Rapat Conveyor (AL330)

2010 Merritt with Rapat Conveyor (AL330), 38.5x96x68, tandem axle, spring ride suspension, 11R24.5 tires, electric roll tarp. Notes: Item Location: Watertown, SD 57201 Equipment Sold "AS IS, WHERE IS": All equipment/property is sold "AS IS, WHERE IS" with no warranty or guarantees, expressed or implied, No operational assessments have been made by DPA Auctions on this item, it has been photographed ONLY.



### #153 - 2012 New Holland W130B (RMC243 Unit 3177)

2012 New Holland W130B (RMC243 Unit 3177), NON RUNNER, diesel engine, shuttle shift, enclosed cab, door glass is out. Notes: This machine has not been used for some time. Probably a parts machine. Item Location: Rosedale, MS 38769 Equipment Sold "AS IS, WHERE IS": All equipment/property is sold "AS IS, WHERE IS" with no warranty or guarantees, expressed or implied, No operational assessments have been made by DPA Auctions on this item, it has been photographed ONLY.



### #154 - 2010 John Deere EZ225, (RMC 241 Unit 1725)

2010 John Deere EZ225, (RMC 241 Unit 1725), NON RUNNER, gas engine, zero turn hydrostatic drive, 48" deck. Notes: Mower is has not been used in awhile. Should run with some work, will need battery. Item Location: Rosedale, MS 38769 Equipment Sold "AS IS, WHERE IS": All equipment/property is sold "AS IS, WHERE IS" with no warranty or guarantees, expressed or implied, No operational assessments have been made by DPA Auctions on this item, it has been photographed ONLY.



### #155 - 2010 CaseIH 7088 Combine (PD737)

2010 CaseIH 7088 Combine (PD737), 1300 engine hours, 887 Separator hours, Axial flow, 8.7L engine, 375 hp, Pro 600 monitor, Yield moisture meter, excellent condition, one owner, farmer owned, used for wheat only. Notes: Item Location: Clinton, OK 73601 Equipment Sold "AS IS, WHERE IS": All equipment/property is sold "AS IS, WHERE IS" with no warranty or guarantees, expressed or implied, No operational assessments have been made by DPA Auctions on this item, it has been photographed ONLY.



### #156 - 1988 Case IH 585 (RMC242, Unit 4349)

1988 Case IH 585 (RMC242, Unit 4349), diesel engine, wide front, rear 3 point hitch, 540 PTO, hydraulic outlet, shows 3007 hours. Notes: Brakes are weak. Will need a battery. Item Location: Rosedale, MS 38769 Equipment Sold "AS IS, WHERE IS": All equipment/property is sold "AS IS, WHERE IS" with no warranty or guarantees, expressed or implied, No operational assessments have been made by DPA Auctions on this item, it has been photographed ONLY.



### #157 - Parker Weigh Wagon (DR7672)

Parker Weigh Wagon (DR7672), single axle, overhead auger, self contained hydraulic w/gas engine, needs orbit motor for up auger ITS GONE, Weigh Tronix scale w/digital read head. Notes: Up auger ORBIT MOTOR IS MISSING. Item Location: Selmer, TN 38375 Equipment Sold "AS IS, WHERE IS": All equipment/property is sold "AS IS, WHERE IS" with no warranty or guarantees, expressed or implied, No operational assessments have been made by DPA Auctions on this item, it has been photographed ONLY.



### #158 - 2000 Cat 236 Skid Loader (DR8627 Unit 10956)

2000 Cat 236 Skid Loader (DR8627 Unit 10956), NON RUNNER, diesel engine, hydrostatic drive, OROPS, auxiliary hydraulic outlets, 12-16.5 tires. Notes: Has not run for awhile. Motor is not stuck should run with some work. Item Location: Gillett, AR 72055 Equipment Sold "AS IS, WHERE IS": All equipment/property is sold "AS IS, WHERE IS" with no warranty or guarantees, expressed or implied, No operational assessments have been made by DPA Auctions on this item, it has been photographed ONLY.



### #159 - 1997 Ford F350 (DR8626 Unit 10929)

1997 Ford F350 (DR8626 Unit 10929), diesel engine, 5 speed transmission, 10' steel flatbed, top and frame mounted storage boxes, gooseneck ball, rear receiver hitch, AM/FM radio, air conditioning. Notes: Item Location: Gillett, AR 72055 Equipment Sold "AS IS, WHERE IS": All equipment/property is sold "AS IS, WHERE IS" with no warranty or guarantees, expressed or implied, No operational assessments have been made by DPA Auctions on this item, it has been photographed ONLY.



### #160 - 2014 Case SR210 Skid Loader (DR8633 Unit 9469)

2014 Case SR210 Skid Loader (DR8633 Unit 9469), turbo diesel engine, hydrostatic drive, OROPS, quick tach front bucket, 12-16.5 tires, auxiliary hydraulic outlets, shows 310 hours. Notes: Item Location: Weiner, AR 72479 Equipment Sold "AS IS, WHERE IS": All equipment/property is sold "AS IS, WHERE IS" with no warranty or guarantees, expressed or implied, No operational assessments have been made by DPA Auctions on this item, it has been photographed ONLY.



### #161 - Floater Tire (DR7941)

Floater Tire (DR7941), 48X31.00-20 floater tire, good tire and good bead. Notes: Item Location: Sleepy Eye, MN 56085 Equipment Sold "AS IS, WHERE IS": All equipment/property is sold "AS IS, WHERE IS" with no warranty or guarantees, expressed or implied, No operational assessments have been made by DPA Auctions on this item, it has been photographed ONLY.



### #162 - 2010 Adams Dry Trailer (RMC248 Unit 11453)

2010 Adams Dry Trailer (RMC248 Unit 11453), 24 ton hydraulic stainless steel dry fertilizer box, rear auger, self contained hydraulics, diesel power unit, 255/70R22.5 tires. Notes: Item Location: Tchula, MS 39169 Equipment Sold "AS IS, WHERE IS": All equipment/property is sold "AS IS, WHERE IS" with no warranty or guarantees, expressed or implied, No operational assessments have been made by DPA Auctions on this item, it has been photographed ONLY.





### #163 - 1996 Mack CH613 (RMC247 Unit 8054)

1996 Mack CH613 (RMC247 Unit 8054), Mack diesel engine, 9 speed transmission, tandem axle full screw, air ride suspension, Adams hydraulic stainless steel dry fertilizer tender box, rear auger, roll over tarp, cruise control, shows 267,571 miles. Notes: Item Location: Tchula, MS 39169 Equipment Sold "AS IS, WHERE IS": All equipment/property is sold "AS IS, WHERE IS" with no warranty or guarantees, expressed or implied, No operational assessments have been made by DPA Auctions on this item, it has been photographed ONLY.



### #164 - 2010 KBH Tender (DR8676 Unit 11489)

2010 KBH Tender (DR8676 Unit 11489), 26 ton hydraulic stainless steel dry fertilizer box, rear auger, self contained hydraulics, diesel power unit, 255/70R22.5 tires. Notes: Item Location: Town Creek, AL 35672 Equipment Sold "AS IS, WHERE IS": All equipment/property is sold "AS IS, WHERE IS" with no warranty or guarantees, expressed or implied, No operational assessments have been made by DPA Auctions on this item, it has been photographed ONLY.



### #165 - 2012 Magnolia Trailer (DR8631 Unit 2521)

2012 Magnolia Trailer (DR8631 Unit 2521), tandem axle, Adams hydraulic stainless steel dry fertilizer box, rear auger, self contained hydraulics, diesel power unit, roll over tarp, 255/70R22.5 tires. Notes: Rear brakes on right side locked up and ruined 2 tires. Brakes were backed off to move it. Power unit needs battery. Item Location: Mc Crory, AR 72101 Equipment Sold "AS IS, WHERE IS": All equipment/property is sold "AS IS, WHERE IS" with no warranty or guarantees, expressed or implied, No operational assessments have been made by DPA Auctions on this item, it has been photographed ONLY.



### #166 - 1996 Mack CH613 (DR8628 Unit 6716)

1996 Mack CH613 (DR8628 Unit 6716), Mack diesel engine, 9 speed transmission, tandem axle full screw, air ride suspension, Doyle hydraulic stainless steel dry fertilizer tender box, rear auger, roll over tarp, engine brake, air conditioning, 22.5 tires, shows 502,025 miles. Notes: Item Location: Mc Crory, AR 72101 Equipment Sold "AS IS, WHERE IS": All equipment/property is sold "AS IS, WHERE IS" with no warranty or guarantees, expressed or implied, No operational assessments have been made by DPA Auctions on this item, it has been photographed ONLY.



### #167 - 2000 Mack CH613 (DR8630 Unit 6727)

2000 Mack CH613 (DR8630 Unit 6727), Mack diesel engine, 10 speed transmission, tandem axle full screw, air ride suspension, 3150 gallon black poly tank, Honda gas engine w/electric start, Flowmax pump, 295/75R22.5 tires, all aluminum wheels, cruise control, shows 759,683 miles. Notes: Item Location: Mc Crory, AR 72101 Equipment Sold "AS IS, WHERE IS": All equipment/property is sold "AS IS, WHERE IS" with no warranty or guarantees, expressed or implied, No operational assessments have been made by DPA Auctions on this item, it has been photographed ONLY.



### #168 - 2000 Mack CH613 (DR8632 Unit 6731)

2000 Mack CH613 (DR8632 Unit 6731), Mack diesel engine, 10 speed transmission, tandem axle full screw, air ride suspension, Doyle hydraulic stainless steel dry fertilizer tender box, rear auger, roll over tarp, dual aluminum fuel tanks, air conditioning, cruise control, Am/FM cassette radio, 22.5 tires, all aluminum wheels, shows 113,069 miles. Notes: 6 near NEW virgin drive tires. Item Location: Mc Crory, AR 72101 Equipment Sold "AS IS, WHERE IS": All equipment/property is sold "AS IS, WHERE IS" with no warranty or guarantees, expressed or implied, No operational assessments have been made by DPA Auctions on this item, it has been photographed ONLY.



### #169 - 2000 John Deere Self -Propelled 4890 Swather (PD742)

2000 John Deere Self -Propelled 4890 Swather (PD742), comes with 890 header, 18 foot header, 3588 engine hours, 2791 header hours, hydrostatic transmission, hydraulic header tilt, paint in good condition, rebuilt wobble box, few cracks on shield, replaced 1 sickle, uses almost zero oil. Notes: Item Location: Lindsborg, KS 67456 Equipment Sold "AS IS, WHERE IS": All equipment/property is sold "AS IS, WHERE IS" with no warranty or guarantees, expressed or implied, No operational assessments have been made by DPA Auctions on this item, it has been photographed ONLY.



### #170 - 1999 Freightliner Century (NJP1213 Unit 12204)

1999 Freightliner Century (NJP1213 Unit 12204), Detroit diesel engine, 10 speed transmission, air ride suspension, day cab, tandem axle full screw, air slide 5th wheel, air dump valve, dual aluminum fuel tanks, AM/FM CD radio, heat, air conditioning, power windows and locks, tires 11R22.5, shows 1,240,295 miles. Notes: Item Location: Stevens Point, WI 54882 Equipment Sold "AS IS, WHERE IS": All equipment/property is sold "AS IS, WHERE IS" with no warranty or guarantees, expressed or implied, No operational assessments have been made by DPA Auctions on this item, it has been photographed ONLY.



---

**#171 - 2002 Freightliner FL70 (DR8669 Unit 13773)**

2002 Freightliner FL70 (DR8669 Unit 13773), Cat diesel engine, 10 speed transmission, day cab, air ride suspension, single axle, 5th wheel plate, AM/FM cassette radio, air conditioning, cruise control, 22.5 tires, shows 197,674 miles. Notes: Item Location: Salinas, CA 93901 Equipment Sold "AS IS, WHERE IS": All equipment/property is sold "AS IS, WHERE IS" with no warranty or guarantees, expressed or implied, No operational assessments have been made by DPA Auctions on this item, it has been photographed ONLY.



---

**#172 - 1994 Freightliner FL112 (DR8671 Unit 13734)**

1994 Freightliner FL112 (DR8671 Unit 13734), Cat diesel engine, 10 speed transmission, cab/chassis ONLY BOX DOES NOT SELL, tandem axle full screw, air ride suspension, engine brake, air dump valve, AM/FM radio, air conditioning, 22.5 tires, all aluminum wheels, shows 421,027 miles. Notes: Truck has BLOWN head gasket. Dry tender box DOES NOT SELL. Item Location: Salinas, CA 93901 Equipment Sold "AS IS, WHERE IS": All equipment/property is sold "AS IS, WHERE IS" with no warranty or guarantees, expressed or implied, No operational assessments have been made by DPA Auctions on this item, it has been photographed ONLY.



---

**#173 - 2000 International 4700 (DR8667 Unit 13517)**

2000 International 4700 (DR8667 Unit 13517), DT466 diesel engine, 6 speed transmission, single axle, air brakes, 1000 gallon aluminum liquid tank, 2 compartment, hydraulic PTO pump, rear and frame mount storage boxes, on board Hotsy washer, rear pintle hitch, air hook ups, AM/FM radio, air conditioning, 22.5 tires, shows 84,896 miles. Notes: Item Location: Salinas, CA 93901 Equipment Sold "AS IS, WHERE IS": All equipment/property is sold "AS IS, WHERE IS" with no warranty or guarantees, expressed or implied, No operational assessments have been made by DPA Auctions on this item, it has been photographed ONLY.



---

**#174 - 1999 International 4900 (DR8672 Unit 13770)**

1999 International 4900 (DR8672 Unit 13770), DT466 diesel engine, 6 speed transmission, single axle, air brakes, 3-500 gallon poly liquid tanks, stainless steel mix tank, PTO pump, gas engine pressure washer, 50 gallon poly water tank, rear storage racks, rear pintle hitch, air hook ups, AM/FM radio, air conditioning, 22.5 tires, shows 102,483 miles. Notes: Item Location: Salinas, CA 93901 Equipment Sold "AS IS, WHERE IS": All equipment/property is sold "AS IS, WHERE IS" with no warranty or guarantees, expressed or implied, No operational assessments have been made by DPA Auctions on this item, it has been photographed ONLY.



---

**#175 - 1989 Chevy C70 (DR8673 Unit 13523)**

1989 Chevy C70 (DR8673 Unit 13523), LP gas engine, 5 speed transmission, 2 speed rear end, single axle, 1000 gallon 2 compartment aluminum liquid tank, 60 gallon aluminum rinse water tank, gas engine w/Banjo pump, PTO hydraulic drive pump, 10.00-20 tires, shows 149,569 miles. Notes: Truck will need a battery, has not been started in awhile. Item Location: Salinas, CA 93901 Equipment Sold "AS IS, WHERE IS": All equipment/property is sold "AS IS, WHERE IS" with no warranty or guarantees, expressed or implied, No operational assessments have been made by DPA Auctions on this item, it has been photographed ONLY.



---

**#176 - 1999 International 4900 (DR8668 Unit 13519)**

1999 International 4900 (DR8668 Unit 13519), DT466 diesel engine, 6 speed transmission, single axle, air brakes, 3-500 gallon poly liquid tanks, stainless steel mix tank, PTO pump, gas engine pressure washer, 50 gallon poly water tank, 12 volt fuel pump, rear storage box, frame mounted storage boxes, rear pintle hitch, air hook ups, cruise control, AM/FM radio, air conditioning, 22.5 tires, shows 91,431 miles. Notes: NO TITLE. Registration only. Item Location: Salinas, CA 93901 Equipment Sold "AS IS, WHERE IS": All equipment/property is sold "AS IS, WHERE IS" with no warranty or guarantees, expressed or implied, No operational assessments have been made by DPA Auctions on this item, it has been photographed ONLY.



---

**#177 - 1999 International 4900 (DR8670 Unit 13520)**

1999 International 4900 (DR8670 Unit 13520), DT466 diesel engine, 6 speed transmission, 3-500 gallon poly liquid tanks, stainless steel mix tank, PTO pump, gas engine and pump, gas engine pressure washer, 50 gallon poly water tank, rear storage compartment box, rear pintle hitch, air hook ups, air conditioning, 22.5 tires, shows 94,416 miles. Notes: Item Location: Salinas, CA 93901 Equipment Sold "AS IS, WHERE IS": All equipment/property is sold "AS IS, WHERE IS" with no warranty or guarantees, expressed or implied, No operational assessments have been made by DPA Auctions on this item, it has been photographed ONLY.



### #178 - 1994 International 4900 (DR8674 Unit 13731)

1994 International 4900 (DR8674 Unit 13731), DT466 diesel engine, 6 speed transmission, single axle, air brakes, 3-500 gallon poly liquid tanks, stainless steel mix tank, PTO pump, gas engine pressure washer, 150 gallon poly water tank, rear storage racks, rear pintle hitch, air hook ups, AM/FM radio, air conditioning, 22.5 tires, shows 395,200 miles. Notes: Item Location: Salinas, CA 93901 Equipment Sold "AS IS, WHERE IS": All equipment/property is sold "AS IS, WHERE IS" with no warranty or guarantees, expressed or implied, No operational assessments have been made by DPA Auctions on this item, it has been photographed ONLY.



### #179 - 2006 International 7600 (RMC244 Unit 4590)

2006 International 7600 (RMC244 Unit 4590), 10 speed transmission, cab/chassis unit, tandem axle full screw, day cab, air ride suspension, AM/FM CD radio, air conditioning, air brakes, 11R22.5, shows 943,146 miles. Notes: Item Location: Cleveland, MS 38732 Equipment Sold "AS IS, WHERE IS": All equipment/property is sold "AS IS, WHERE IS" with no warranty or guarantees, expressed or implied, No operational assessments have been made by DPA Auctions on this item, it has been photographed ONLY.



### #180 - 2014 CaseIH Steiger 400 Quadtrac (PD736)

2014 CaseIH Steiger 400 Quadtrac (PD736), 1546 hours, 12.9L engine, 400 hp, 340 3 pt PTO, Auto Guidance Rec HP/XP, luxury cab, HID lights, electric mirrors, 57 gpm, new controller, ground speed sensor, Navigation. Notes: Item Location: Clinton, OK 73601 Equipment Sold "AS IS, WHERE IS": All equipment/property is sold "AS IS, WHERE IS" with no warranty or guarantees, expressed or implied, No operational assessments have been made by DPA Auctions on this item, it has been photographed ONLY.



### #181 - 1992 Cougar LS (DR8592)

1992 Cougar LS (DR8592), Knight Cat special edition, 3.8 liter V-6 gas engine, 4 speed automatic transmission, AM/FM cassette radio, power windows, locks & mirrors, front bucket seats, air conditioning, tinted glass, shows 53,212 miles. Notes: Item Location: Austin, MN 55912 Equipment Sold "AS IS, WHERE IS": All equipment/property is sold "AS IS, WHERE IS" with no warranty or guarantees, expressed or implied, No operational assessments have been made by DPA Auctions on this item, it has been photographed ONLY.



### #182 - 1994 Astro Custom (DR8593)

1994 Astro Custom (DR8593), cut down "topless" van, V-6 gas engine, automatic transmission, NO DOORS, shows 148,000 miles. Notes: Item Location: Austin, MN 55912 Equipment Sold "AS IS, WHERE IS": All equipment/property is sold "AS IS, WHERE IS" with no warranty or guarantees, expressed or implied, No operational assessments have been made by DPA Auctions on this item, it has been photographed ONLY.



### #183 - 1989 Mustang GT Convertible (DR8594)

1989 Mustang GT Convertible (DR8594), street legal drag car, 5.0 liter V-6 gas engine, automatic transmission w/shift kit, 302 c.u. HO roller, Trick Flow heads, Trick Flow cam & push rods, Ford Motorsport 1.6 roller rockers, Edelbrock hi-rise intake manifold, Edelbrock 750 CFm carburetor, BBK headers and under drive pulleys, full MSD ignition, 3:73 rear end, coil covers, caster camber, tubular A arms, full length sub-frame connectors, tinted glass, convertible top, rear spoiler, racing slick wrinkle wall rear tires, 6 point roll cage, shows 52,000 miles. Notes: Thousands of dollars invested in this car, 400+ horse power and 100% ready to ride. Original Florida car no rust. Item Location: Austin, MN 55912 Equipment Sold "AS IS, WHERE IS": All equipment/property is sold "AS IS, WHERE IS" with no warranty or guarantees, expressed or implied, No operational assessments have been made by DPA Auctions on this item, it has been photographed ONLY.



### #184 - 1996 BMW 840Ci (DR8595)

1996 BMW 840Ci (DR8595), 8 series, 4.4 liter V-8 gas engine, 5 speed automatic transmission, leather interior, BAS 4 wheel brakes, AM/FM cassette radio w/6 CD changer, power windows & locks, front bucket seats, shows 189,000 miles. Notes: New price on this car was \$121,000 for this limited edition. Original California car no rust. Item Location: Austin, MN 55912 Equipment Sold "AS IS, WHERE IS": All equipment/property is sold "AS IS, WHERE IS" with no warranty or guarantees, expressed or implied, No operational assessments have been made by DPA Auctions on this item, it has been photographed ONLY.



### #185 - 2004 Ford Georgia Boy (DR8596)

2004 Ford Georgia Boy (DR8596), gas engine, automatic transmission, double slide outs, NEW carpet, full kitchen full bath, queen size master bedroom, lots of storage, gas remote start generator, shows 17,000 actual miles. Notes: Very clean motor home ready to go. Item Location: Austin, MN 55912 Equipment Sold "AS IS, WHERE IS": All equipment/property is sold "AS IS, WHERE IS" with no warranty or guarantees, expressed or implied, No operational assessments have been made by DPA Auctions on this item, it has been photographed ONLY.



---

### #186 - 1995 International (DR8574 Unit 951)

1995 International (DR8574 Unit 951), Cummins diesel engine, 8 speed lo/lo transmission, tandem axle full screw, air brakes, 12 ton hydraulic bulk feed body, roll over tarp, AM/FM radio, air conditioning, cruise control, 22.5 tires, shows 228,603 miles. Notes: Truck is used on a regular basis as a back up. Item Location: Ayrshire, IA 50515 Equipment Sold "AS IS, WHERE IS": All equipment/property is sold "AS IS, WHERE IS" with no warranty or guarantees, expressed or implied, No operational assessments have been made by DPA Auctions on this item, it has been photographed ONLY.



---

### #187 - 2013 Merritt with Rapat Conveyor (AL331)

2013 Merritt with Rapat Conveyor (AL331), 38.5x96x68, tandem axle, air ride suspension, 11R24.5 Tires, electric roll tarp, 8 aluminum wheels. Notes: Item Location: Watertown, SD 57201 Equipment Sold "AS IS, WHERE IS": All equipment/property is sold "AS IS, WHERE IS" with no warranty or guarantees, expressed or implied, No operational assessments have been made by DPA Auctions on this item, it has been photographed ONLY.



---

### #188 - John Deere Planter Markers (2) (MK053)

John Deere Planter Markers (2) (MK053), John Deere planter marker, came off of a 24 row 1770 NT some weld repairs. Notes: Item Location: Randolph, NE 68771 Equipment Sold "AS IS, WHERE IS": All equipment/property is sold "AS IS, WHERE IS" with no warranty or guarantees, expressed or implied, No operational assessments have been made by DPA Auctions on this item, it has been photographed ONLY.



---

### #189 - John Deere Rubber Closing Wheels (MK048)

John Deere Rubber Closing Wheels (MK048), John Deere rubber closing wheels, Excellent Condition. Notes: Item Location: Randolph, NE 68771 Equipment Sold "AS IS, WHERE IS": All equipment/property is sold "AS IS, WHERE IS" with no warranty or guarantees, expressed or implied, No operational assessments have been made by DPA Auctions on this item, it has been photographed ONLY.



---

### #190 - Hydraulic Centrifugal Pumps (6) (MK052)

Hydraulic Centrifugal Pumps (6) (MK052), six hydraulic centrifugal pumps. Comes with 2 sets of hoses. Some may need seals replaced. Part Numbers for Each: 1 - FMC-150F-HYD-2062- FMC-200-HYD-3043-9303-C-HM1C-BU4-9303-C-HM1C-BU5-93100 stainless steel 3/6-FMC-200-HYD-304 Notes: Item Location: Randolph, NE 68771 Equipment Sold "AS IS, WHERE IS": All equipment/property is sold "AS IS, WHERE IS" with no warranty or guarantees, expressed or implied, No operational assessments have been made by DPA Auctions on this item, it has been photographed ONLY.



---

### #191 - Demco Lil Thumper Piston Pump (MK051)

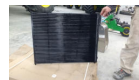
Demco Lil Thumper Piston Pump (MK051), Demco Lil Thumper piston pump, Complete set up off of a JD 1770 NT planter. Includes hardware, brackets, and sprockets. Notes: Item Location: Randolph, NE 68771 Equipment Sold "AS IS, WHERE IS": All equipment/property is sold "AS IS, WHERE IS" with no warranty or guarantees, expressed or implied, No operational assessments have been made by DPA Auctions on this item, it has been photographed ONLY.



---

### #192 - Ford Air Conditioning Condenser (MK049)

Ford Air Conditioning Condenser (MK049), Ford air conditioning condenser, fits Super Duty Diesel trucks. Brand new never installed. Part # 6C3Z-19712-BA. Notes: Item Location: Randolph, NE 68771 Equipment Sold "AS IS, WHERE IS": All equipment/property is sold "AS IS, WHERE IS" with no warranty or guarantees, expressed or implied, No operational assessments have been made by DPA Auctions on this item, it has been photographed ONLY.



---

### #193 - Claas Corn Shoot (MK047)

Claas Corn Shoot (MK047), 30' Corn Snoot, Brand new, never installed. Paint wear is from transport. Notes: Item Location: Randolph, NE 68771 Equipment Sold "AS IS, WHERE IS": All equipment/property is sold "AS IS, WHERE IS" with no warranty or guarantees, expressed or implied, No operational assessments have been made by DPA Auctions on this item, it has been photographed ONLY.





---

### #194 - Maywes Corn Savers (MK046)

Maywes Corn Savers (MK046), Brand New never installed. fits Claas corn head, may fit other brands. N24? o installation hardware. Notes: Item Location: Randolph, NE 68771 Equipment Sold "AS IS, WHERE IS": All equipment/property is sold "AS IS, WHERE IS" with no warranty or guarantees, expressed or implied, No operational assessments have been made by DPA Auctions on this item, it has been photographed ONLY.



---

### #195 - Raven Envizo Pro, Accu Boom, SCS 4600 Controller, Smart Trax (KMK498)

Raven Envizo Pro, Accu Boom, SCS 4600 Controller, Smart Trax (KMK498), Raven Envizo Pro, Accu Boom, Raven SCS 4600 controller, Raven Smart Trax, all cables and hyd. came off Case IH 4410 sprayer. Notes: Item Location: Tribune, KS 67879 Equipment Sold "AS IS, WHERE IS": All equipment/property is sold "AS IS, WHERE IS" with no warranty or guarantees, expressed or implied, No operational assessments have been made by DPA Auctions on this item, it has been photographed ONLY.



---

### #196 - 2000 Great Dane/ Pines Aluminum Van Trailer (KMK2106)

2000 Great Dane/ Pines Aluminum Van Trailer (KMK2106), 48' x 102", 13ft 6" high, sliding tandem axle, spring suspension, roll up back door, translucent roof, e-track, very good condition, Stemco hubometer, shows 97,730 miles. Notes: Item Location: Dayton, IA 50530 Equipment Sold "AS IS, WHERE IS": All equipment/property is sold "AS IS, WHERE IS" with no warranty or guarantees, expressed or implied, No operational assessments have been made by DPA Auctions on this item, it has been photographed ONLY.



---

### #197 - 2000 Great Dane/ Pines Aluminum Van Trailer (KMK2105)

2000 Great Dane/ Pines Aluminum Van Trailer (KMK2105), 48' x 102", 13ft 6" high, sliding tandem axle, spring suspension, transglobal roll up back door, translucent roof, e-track, very good condition, Stemco hubometer, shows 144,834 miles. Notes: Item Location: Dayton, IA 50530 Equipment Sold "AS IS, WHERE IS": All equipment/property is sold "AS IS, WHERE IS" with no warranty or guarantees, expressed or implied, No operational assessments have been made by DPA Auctions on this item, it has been photographed ONLY.



---

### #198 - Custom Made Composter (AL306)

Custom Made Composter (AL306), 8' auger, 10' 3" wide overall, weight 2200 pounds, designed for 36 gpm oil flow. Notes: Please leave seller a message if you contact him and he doesn't answer. He will return your call. Item Location: Eskridge, KS 66423 Equipment Sold "AS IS, WHERE IS": All equipment/property is sold "AS IS, WHERE IS" with no warranty or guarantees, expressed or implied, No operational assessments have been made by DPA Auctions on this item, it has been photographed ONLY.



---

### #199 - Brown Bear Composter 24C (AL307)

Brown Bear Composter 24C (AL307), 6' auger, 7' 7" overall width, new paddles, new seal on left side, freshly painted. Notes: Please leave seller a message if you contact him and he doesn't answer. He will return your call. Item Location: Eskridge, KS 66423 Equipment Sold "AS IS, WHERE IS": All equipment/property is sold "AS IS, WHERE IS" with no warranty or guarantees, expressed or implied, No operational assessments have been made by DPA Auctions on this item, it has been photographed ONLY.



---

### #200 - USC Series 3000 Conveyor (NP6474)

USC Series 3000 Conveyor (NP6474), 65', portable, electric driven conveyor belt with electric motor, electric over hydraulic lift mechanism, collapsible hopper, very gently used to fill 2,000 and 3,000 unit soybean bins, cleated belt for higher volume at steeper angles, always stored inside insulated building, excellent condition. Notes: Item Location: Versailles, IN 47042 Equipment Sold "AS IS, WHERE IS": All equipment/property is sold "AS IS, WHERE IS" with no warranty or guarantees, expressed or implied, No operational assessments have been made by DPA Auctions on this item, it has been photographed ONLY.



---

### #201 - Case IH 9370 (DR8600)

Case IH 9370 (DR8600), Cummins diesel engine, 4 range w/powershift transmission, 4 hydraulic outlets, cab heat/air conditioning, 10 front weights, front tires are 80% Goodyears, rears are Firestone 95%, all are 650/75R32, all duals, shows 4266 hours. Notes: Good solid tractor needs nothing. Owner just updated to newer tractor w/auto steer & PTO. Item Location: Royalton, IL 62983 Equipment Sold "AS IS, WHERE IS": All equipment/property is sold "AS IS, WHERE IS" with no warranty or guarantees, expressed or implied, No operational assessments have been made by DPA Auctions on this item, it has been photographed ONLY.



---

### #202 - Suitcase Weights (DR8601)

Suitcase Weights (DR8601), (20) 90lb suitcase weights, came off Case IH. Notes: Item Location: Royalton, IL 62983 Equipment Sold "AS IS, WHERE IS": All equipment/property is sold "AS IS, WHERE IS" with no warranty or guarantees, expressed or implied, No operational assessments have been made by DPA Auctions on this item, it has been photographed ONLY.



---

### #203 - John Deere 7000 (DR8614)

John Deere 7000 (DR8614), 4 row 36" or 38" planter, hydraulic markers, corn discs, starter fertilizer boxes. Notes: All chains and not used since. Always stored inside. NO MONITOR. Item Location: Dakota, IL 61018 Equipment Sold "AS IS, WHERE IS": All equipment/property is sold "AS IS, WHERE IS" with no warranty or guarantees, expressed or implied, No operational assessments have been made by DPA Auctions on this item, it has been photographed ONLY.



---

### #204 - Batco 1535 Conveyor (DR8612)

Batco 1535 Conveyor (DR8612), enclosed seed conveyor, NEW 7.5hp electric drive motor this fall, cleated belt. Notes: Item Location: Hawk Point, MO 63349 Equipment Sold "AS IS, WHERE IS": All equipment/property is sold "AS IS, WHERE IS" with no warranty or guarantees, expressed or implied, No operational assessments have been made by DPA Auctions on this item, it has been photographed ONLY.



---

### #205 - USC Hopper (DR8613)

USC Hopper (DR8613), 80 unit rebag hopper, trip gated spout. Notes: Item Location: Hawk Point, MO 63349 Equipment Sold "AS IS, WHERE IS": All equipment/property is sold "AS IS, WHERE IS" with no warranty or guarantees, expressed or implied, No operational assessments have been made by DPA Auctions on this item, it has been photographed ONLY.



---

### #206 - 2001 Kidron (DR8607)

2001 Kidron (DR8607), 42' van trailer, sliding tandem axles, (4) 1600 gallon poly flat bottom tanks, (2) 30 gallon chemical inductors, gas engine w/3" liquid pump, rear roll up door and access steps, (2) curb side doors. Notes: Item Location: Pine Island, MN 55963 Equipment Sold "AS IS, WHERE IS": All equipment/property is sold "AS IS, WHERE IS" with no warranty or guarantees, expressed or implied, No operational assessments have been made by DPA Auctions on this item, it has been photographed ONLY.



---

### #207 - Taiwan Rickshaw (DR8597)

Taiwan Rickshaw (DR8597), this is genuine and unique, fold down top, full rear differential, each rear wheel brakes, rear fenders, rear chrome bumper. Notes: Item Location: Austin, MN 55912 Equipment Sold "AS IS, WHERE IS": All equipment/property is sold "AS IS, WHERE IS" with no warranty or guarantees, expressed or implied, No operational assessments have been made by DPA Auctions on this item, it has been photographed ONLY.



---

### #208 - 2010 Case IH SPX 4420 Sprayer (PD735)

2010 Case IH SPX 4420 Sprayer (PD735), cab in good condition, Raven Viper Pro with Phoenix 200 Controller, 100 foot booms with 5 ways on 20 inch, Raven SmartTrax auto steer, 1200 gallon stainless steel tank, inductor, HID lights, active suspension, frame is in good condition, paint is good, 380/90R46, rims are painted, shows 2469 hours. Notes: Item Location: Hewitt, TX 76643 Equipment Sold "AS IS, WHERE IS": All equipment/property is sold "AS IS, WHERE IS" with no warranty or guarantees, expressed or implied, No operational assessments have been made by DPA Auctions on this item, it has been photographed ONLY.



---

### #209 - Misc. NH3 Toolbar Parts (KMK501)

Misc. NH3 Toolbar Parts (KMK501), ground drive pump, 13 knives and coulters, and other misc. parts that came off toolbar. Notes: Item Location: La Belle, MO 63447 Equipment Sold "AS IS, WHERE IS": All equipment/property is sold "AS IS, WHERE IS" with no warranty or guarantees, expressed or implied, No operational assessments have been made by DPA Auctions on this item, it has been photographed ONLY.



---

### #210 - 2400 Gallon Liquid Tank (KMK504)

2400 Gallon Liquid Tank (KMK504), 2400 gallon vertical liquid storage tank, stainless steel, stainless steel stands, used for bulk chemical storage, have been cleaned out. Notes: Item Location: La Belle, MO 63447 Equipment Sold "AS IS, WHERE IS": All equipment/property is sold "AS IS, WHERE IS" with no warranty or guarantees, expressed or implied, No operational assessments have been made by DPA Auctions on this item, it has been photographed ONLY.



---

### #211 - 2400 Gallon Liquid Tank (KMK503)

2400 Gallon Liquid Tank (KMK503), 2400 gallon vertical liquid storage tank, stainless steel, stainless steel stands, used for bulk chemical storage, have been cleaned out. Notes: Item Location: La Belle, MO 63447 Equipment Sold "AS IS, WHERE IS": All equipment/property is sold "AS IS, WHERE IS" with no warranty or guarantees, expressed or implied, No operational assessments have been made by DPA Auctions on this item, it has been photographed ONLY.



---

### #212 - 2400 Gallon Liquid Tank (KMK505)

2400 Gallon Liquid Tank (KMK505), 2400 gallon vertical liquid storage tank, stainless steel, stainless steel stands, used for bulk chemical storage, have been cleaned out. Notes: Item Location: La Belle, MO 63447 Equipment Sold "AS IS, WHERE IS": All equipment/property is sold "AS IS, WHERE IS" with no warranty or guarantees, expressed or implied, No operational assessments have been made by DPA Auctions on this item, it has been photographed ONLY.



---

### #213 - 2400 Gallon Liquid Tank (KMK506)

2400 Gallon Liquid Tank (KMK506), 2400 gallon vertical liquid storage tank, stainless steel, stainless steel stands, used for bulk chemical storage, have been cleaned out. Notes: Item Location: La Belle, MO 63447 Equipment Sold "AS IS, WHERE IS": All equipment/property is sold "AS IS, WHERE IS" with no warranty or guarantees, expressed or implied, No operational assessments have been made by DPA Auctions on this item, it has been photographed ONLY.



---

### #214 - Portable Metal Containment Dike (KMK507)

Portable Metal Containment Dike (KMK507), custom made, metal dike with floor, 10' wide, 18' long, 24" deep. Notes: Item Location: La Belle, MO 63447 Equipment Sold "AS IS, WHERE IS": All equipment/property is sold "AS IS, WHERE IS" with no warranty or guarantees, expressed or implied, No operational assessments have been made by DPA Auctions on this item, it has been photographed ONLY.



---

### #215 - Portable Metal Containment Dike (KMK508)

Portable Metal Containment Dike (KMK508), custom made, metal dike with floor, 10' wide, 20' long, 22" deep. Notes: Item Location: La Belle, MO 63447 Equipment Sold "AS IS, WHERE IS": All equipment/property is sold "AS IS, WHERE IS" with no warranty or guarantees, expressed or implied, No operational assessments have been made by DPA Auctions on this item, it has been photographed ONLY.



---

### #216 - Toreq 11500 Scraper (KMK500)

Toreq 11500 Scraper (KMK500), capacity heaped 11.5 cubic yards, capacity stuck 8.6 cubic yards, 360 degree swivel hitch, knuckle block steering hitch, industrial cylinders, 18" rear spill plate, drop front dolly, width of cut 98", overall width 116", depth of cut 10", depth of spread 0"-15", ground clearance 17", apron opening 59", overall length 306", overall height 80", weight 10,500 lbs., original cutting bits, wheel base 196", tire stem protectors, front tires 16.5 x 16.1, rear tires 18.4 x 26. Notes: Approximate tractor size 150-250 HP. (Rubber Tire). 50-75 HP. (Crawler). Original owner. Excellent tires and paint. Serviced twice daily since new. Item Location: La Belle, MO 63447 Equipment Sold "AS IS, WHERE IS": All equipment/property is sold "AS IS, WHERE IS" with no warranty or guarantees, expressed or implied, No operational assessments have been made by DPA Auctions on this item, it has been photographed ONLY.



---

### #217 - Clark Forklift (PD733)

Clark Forklift (PD733), triple mass, 4000 pounds, hard tires, lift works, runs good, no propane tank, transmission weak. Notes: Item Location: Kevil, KY 42053 Equipment Sold "AS IS, WHERE IS": All equipment/property is sold "AS IS, WHERE IS" with no warranty or guarantees, expressed or implied, No operational assessments have been made by DPA Auctions on this item, it has been photographed ONLY.



---

### #218 - 2001 4700 International Day Cab (PD732)

2001 4700 International Day Cab (PD732), Detroit 466 engine, 6 speed Eaton Fuller transmission, 45,000 miles ago had an in frame rebuild, air brakes, double framed, 9 foot back of cab to back of frame, needs new windshield & batteries. Notes: Item Location: Kevil, KY 42053 Equipment Sold "AS IS, WHERE IS": All equipment/property is sold "AS IS, WHERE IS" with no warranty or guarantees, expressed or implied, No operational assessments have been made by DPA Auctions on this item, it has been photographed ONLY.



---

### #219 - Parsons Grain Leg (AL314)

Parsons Grain Leg (AL314), 20,000 BPH Plus, 60' to the bottom of down spout, 100 HP 3 phase motor, has double row of poly cups on the belt, cups are 18"x8". Notes: Item Location: Bernard, IA 52032 Equipment Sold "AS IS, WHERE IS": All equipment/property is sold "AS IS, WHERE IS" with no warranty or guarantees, expressed or implied, No operational assessments have been made by DPA Auctions on this item, it has been photographed ONLY.



---

### #220 - Conveyor Belt Rollers (AL315)

Conveyor Belt Rollers (AL315), rollers are for a 24" belt, there are 11 of them with 2 straight return rollers. Notes: These rollers are new. Item Location: Bernard, IA 52032 Equipment Sold "AS IS, WHERE IS": All equipment/property is sold "AS IS, WHERE IS" with no warranty or guarantees, expressed or implied, No operational assessments have been made by DPA Auctions on this item, it has been photographed ONLY.



---

### #221 - 2013 New Holland 7560 Discbine (AL313)

2013 New Holland 7560 Discbine (AL313), 15' 7", 12 disc, drawbar swivel hitch, 1,000 PTO, 31x13.5x15 tires. Notes: Discbine is Brand new, never used, and in perfect condition. Loading help is also available. Delivery is available for a fee. Item Location: Alma Center, WI 54611 Equipment Sold "AS IS, WHERE IS": All equipment/property is sold "AS IS, WHERE IS" with no warranty or guarantees, expressed or implied, No operational assessments have been made by DPA Auctions on this item, it has been photographed ONLY.



---

### #222 - 300 Gallon Front Mount Tank (MH266)

300 Gallon Front Mount Tank (MH266), 300 gallon front mount tank, fits John Deere 8000 series. Notes: Item Location: Valparaiso, IN 46385 Equipment Sold "AS IS, WHERE IS": All equipment/property is sold "AS IS, WHERE IS" with no warranty or guarantees, expressed or implied, No operational assessments have been made by DPA Auctions on this item, it has been photographed ONLY.



---

### #223 - Nurse Wagon Trailer (MH267)

Nurse Wagon Trailer (MH267), wagon trailer is model T-12 with 12 ton running gear, was used as a nurse trailer hauling 1500 gallon, has a steel I-beam down the center, 12.5L-15 tires in good condition. Notes: No Title. Item Location: Valparaiso, IN 46385 Equipment Sold "AS IS, WHERE IS": All equipment/property is sold "AS IS, WHERE IS" with no warranty or guarantees, expressed or implied, No operational assessments have been made by DPA Auctions on this item, it has been photographed ONLY.



---

### #224 - Bush Hog Rotary Cutter (AL317)

Bush Hog Rotary Cutter (AL317), pull type, small rust spots, 5' wide, 540 PTO, used last fall, hydro height adjustment, solid back wheels. Notes: No Title. Item Location: Hardy, NE 68943 Equipment Sold "AS IS, WHERE IS": All equipment/property is sold "AS IS, WHERE IS" with no warranty or guarantees, expressed or implied, No operational assessments have been made by DPA Auctions on this item, it has been photographed ONLY.



---

### #225 - John Deere Plow (AL318)

John Deere Plow (AL318), 4 bottoms, 3 point, lever adjustment. Notes: Item Location: Hardy, NE 68943 Equipment Sold "AS IS, WHERE IS": All equipment/property is sold "AS IS, WHERE IS" with no warranty or guarantees, expressed or implied, No operational assessments have been made by DPA Auctions on this item, it has been photographed ONLY.



---

### #226 - Smith Rock/Grapple Bucket (AL316)

Smith Rock/Grapple Bucket (AL316), heavy duty rock bottom, double grapple arms with individual cylinders, skid loader universal attachment plate. Notes: Item Location: Hardy, NE 68943 Equipment Sold "AS IS, WHERE IS": All equipment/property is sold "AS IS, WHERE IS" with no warranty or guarantees, expressed or implied, No operational assessments have been made by DPA Auctions on this item, it has been photographed ONLY.





---

### #227 - Square D EZ Meter Paks (KMK496)

Square D EZ Meter Paks (KMK496), Square D ez meter paks, one (1) Square D EZ meter pak, cap. bus principal 1200 A max, 208Y/120 vac, 3 phases - 4 wires delta, one (1) Square D EZ meter pak, cap. bus principal 1200 A max, 208Y/120 vac, 3 phases - 4 wires, one (1) Square D EZ meter pak terminal box, cap. bus principal 800 A max, 208/120 v, 3 phase - 4 wires, three (3) meter socket closing plates, five (5) Square D PowerPact QD 200 circuit breakers. Notes: Item Location: Guthrie Center, IA 50115 Equipment Sold "AS IS, WHERE IS": All equipment/property is sold "AS IS, WHERE IS" with no warranty or guarantees, expressed or implied, No operational assessments have been made by DPA Auctions on this item, it has been photographed ONLY.



---

### #228 - 1991 Case IH 9170 Tractor (PD731)

1991 Case IH 9170 Tractor (PD731), 6200 hours, full power shift transmission, 12 fwd gears, Cummins diesel, 380 hp, standard flow, A/C blows cold, heat, everything works, runs good, new urethane paint 5 years ago, field ready. Notes: Item Location: Fairfax, MO 64446 Equipment Sold "AS IS, WHERE IS": All equipment/property is sold "AS IS, WHERE IS" with no warranty or guarantees, expressed or implied, No operational assessments have been made by DPA Auctions on this item, it has been photographed ONLY.



---

### #229 - 2010 Mate End Dump Trailer (MH268)

2010 Mate End Dump Trailer (MH268), 39'L x 102"W, 60" side height, aluminum construction, spread axle with front axle lift, air ride suspension, dual landing gear, aluminum wheels, 275/80R 24.5 tires, tires are at 70%, fifth wheel plate, air brakes, brakes are at 80%, air operated grain door end gate, single hydraulic cylinder, rollover tarp, trailer weighs about 13,660 lbs. Notes: Item Location: Mechanicsville, IA 52306 Equipment Sold "AS IS, WHERE IS": All equipment/property is sold "AS IS, WHERE IS" with no warranty or guarantees, expressed or implied, No operational assessments have been made by DPA Auctions on this item, it has been photographed ONLY.



---

### #230 - 2004 Chevrolet Corvette (TH248)

2004 Chevrolet Corvette (TH248), 5L NA V8 overhead valves (OHV) 16V, 4-speed automatic, shows 28056 miles. Notes: Item Location: Alburnett, IA 52202 Equipment Sold "AS IS, WHERE IS": All equipment/property is sold "AS IS, WHERE IS" with no warranty or guarantees, expressed or implied, No operational assessments have been made by DPA Auctions on this item, it has been photographed ONLY.



---

### #231 - Set Of HOGE Built Fenders And Fenders For Semi Pusher Axel (TH249)

Set Of HOGE Built Fenders And Fenders For Semi Pusher Axel (TH249), includes mounting brackets, no hardware, some repairs shown in pictures. Notes: Item Location: Randolph, NE 68771 Equipment Sold "AS IS, WHERE IS": All equipment/property is sold "AS IS, WHERE IS" with no warranty or guarantees, expressed or implied, No operational assessments have been made by DPA Auctions on this item, it has been photographed ONLY.



---

### #232 - NEW 1400 Gallon Enduraplas Tank w/ Mounting Pins (MH269)

NEW 1400 Gallon Enduraplas Tank w/ Mounting Pins (MH269), NEW 1400 gallon horizontal Enduraplas tank (THF01400), tank is 8.5 feet long, can be placed crosswise on trailer deck, includes mounting pins and extra bulkhead for product re-circulation or to install a quick- fill valve, trailer NOT included. Notes: Trailer NOT included. Mounting pins not shown, but will come with the tank. Item Location: New Vienna, IA 52065 Equipment Sold "AS IS, WHERE IS": All equipment/property is sold "AS IS, WHERE IS" with no warranty or guarantees, expressed or implied, No operational assessments have been made by DPA Auctions on this item, it has been photographed ONLY.



---

### #233 - NEW 1200 Gallon Enduraplas Tank w/ Mounting Pins (MH270)

NEW 1200 Gallon Enduraplas Tank w/ Mounting Pins (MH270), NEW 1200 gallon horizontal Enduraplas tank (THF01200), tank is 8.5 feet long, can be placed crosswise on trailer deck, includes mounting pins and extra bulkhead for product re-circulation or to install a quick- fill valve. Notes: Mounting pins not shown, but will come with the tank. Item Location: New Vienna, IA 52065 Equipment Sold "AS IS, WHERE IS": All equipment/property is sold "AS IS, WHERE IS" with no warranty or guarantees, expressed or implied, No operational assessments have been made by DPA Auctions on this item, it has been photographed ONLY.



---

### #234 - NEW 1000 Gallon Enduraplas Tank w/ Mounting Pins (MH271)

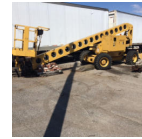
NEW 1000 Gallon Enduraplas Tank w/ Mounting Pins (MH271), NEW 1000 gallon horizontal Enduraplas tank (THF01000), tank is 7.8 feet long, can be placed crosswise on trailer deck, includes mounting pins and extra bulkhead for product re-circulation or to install a quick- fill valve. Notes: Mounting pins not shown, but will come with the tank. Item Location: New Vienna, IA 52065 Equipment Sold "AS IS, WHERE IS": All equipment/property is sold "AS IS, WHERE IS" with no warranty or guarantees, expressed or implied, No operational assessments have been made by DPA Auctions on this item, it has been photographed ONLY.



---

### #235 - 1996 Grove AMZ66XT Lift Platform (TH250)

1996 Grove AMZ66XT Lift Platform (TH250), 1996 Grove AMZ66XT lift platform, shows 2400 hours. Notes: Item Location: Louisville, KY 40203 Equipment Sold "AS IS, WHERE IS": All equipment/property is sold "AS IS, WHERE IS" with no warranty or guarantees, expressed or implied, No operational assessments have been made by DPA Auctions on this item, it has been photographed ONLY.



---

### #236 - 1993 International 9400 Eagle (KMK2104)

1993 International 9400 Eagle (KMK2104), Series 60 Detroit, 12.7 liter, diesel engine, Eaton Fuller 13 speed transmission, AM/FM/CD radio, heat and air conditioning, dual fuel tanks, 222 wheel base, 295/ 75 R 22.5 tires in fair condition, shows 925,931 miles. JUNK CERTIFICATE. Notes: Was going to use this truck as a donor so the title has been changed to a JUNK CERTIFICATE. It does run, drove it here about 70 miles after purchase. Item Location: Ida Grove, IA 51445 Equipment Sold "AS IS, WHERE IS": All equipment/property is sold "AS IS, WHERE IS" with no warranty or guarantees, expressed or implied, No operational assessments have been made by DPA Auctions on this item, it has been photographed ONLY.



---

### #237 - 2013 Freightliner Columbia (KMK2102)

2013 Freightliner Columbia (KMK2102), Series 60 Detroit, 14 liter, diesel engine, Eaton Fuller 10 speed transmission, mid roof sleeper, air ride, heat and air conditioning, AM/FM/CD/MP3 radio, dual fuel tanks, Merritt utility box and step box, Goodyear steer tires 22.5LP, Goodyear drive tires 22.5LP with 16/32 tread depth, Detroit certified complete overhaul at 201,355 miles, shows 518,176 miles. Notes: Service records and Detroit certified overhaul information available upon request. Item Location: Ida Grove, IA 51445 Equipment Sold "AS IS, WHERE IS": All equipment/property is sold "AS IS, WHERE IS" with no warranty or guarantees, expressed or implied, No operational assessments have been made by DPA Auctions on this item, it has been photographed ONLY.



---

### #238 - 1992 Freightliner FDL 120 (KMK2103)

1992 Freightliner FDL 120 (KMK2103), Series 60 Detroit, 12.7 liter, diesel engine, 9 speed transmission, AM/FM radio, heat and air conditioning, dual fuel tanks, step box, 295/ 75 R 22.5 tires, shows 906,845 miles, JUNK CERTIFICATE. Notes: Was going to use this truck as a donor, so the title has been changed to a JUNK CERTIFICATE. Have not tried to start it since purchase. Item Location: Ida Grove, IA 51445 Equipment Sold "AS IS, WHERE IS": All equipment/property is sold "AS IS, WHERE IS" with no warranty or guarantees, expressed or implied, No operational assessments have been made by DPA Auctions on this item, it has been photographed ONLY.



---

### #239 - Kinze 1500 Cultivator (DR8620)

Kinze 1500 Cultivator (DR8620), 12 row 30", 3 point mount hydraulic fold, minimum/ridge till, replacable lathes, rolling shields, set up for UAN/Nh3 with all red monitors. Notes: Item Location: Pine Island, MN 55963 Equipment Sold "AS IS, WHERE IS": All equipment/property is sold "AS IS, WHERE IS" with no warranty or guarantees, expressed or implied, No operational assessments have been made by DPA Auctions on this item, it has been photographed ONLY.



---

### #240 - Navigator (DR8621)

Navigator (DR8621), guidance system, 3 point mount, side shifter, complete with controller, cat whiskers and manual. Notes: Item Location: Pine Island, MN 55963 Equipment Sold "AS IS, WHERE IS": All equipment/property is sold "AS IS, WHERE IS" with no warranty or guarantees, expressed or implied, No operational assessments have been made by DPA Auctions on this item, it has been photographed ONLY.



---

### #241 - 2000 Daewoo (DR8567 Unit 10053)

2000 Daewoo (DR8567 Unit 10053), NON RUNNER, model G255S, LP gas engine, shuttle shift, 5000 lb capacity, 3 stage tilting mast, hydraulic side shift. Notes: This forklift DOES NOT currently run. Call owner for more details. It needs at least a starter and alternator, will not fire. Item Location: Edson, KS 67733 Equipment Sold "AS IS, WHERE IS": All equipment/property is sold "AS IS, WHERE IS" with no warranty or guarantees, expressed or implied, No operational assessments have been made by DPA Auctions on this item, it has been photographed ONLY.



---

### #242 - John Blu Pump (DR8617)

John Blu Pump (DR8617), model LM49558 ground drive pump. Notes: Item Location: Lake Crystal, MN 56055 Equipment Sold "AS IS, WHERE IS": All equipment/property is sold "AS IS, WHERE IS" with no warranty or guarantees, expressed or implied, No operational assessments have been made by DPA Auctions on this item, it has been photographed ONLY.



### #243 - New Tires (NJP1018)

New Tires (NJP1018), 4 - Mastercraft 235/50R17 tires. Notes: Item Location: Belleville, IL 62222 Equipment Sold "AS IS, WHERE IS": All equipment/property is sold "AS IS, WHERE IS" with no warranty or guarantees, expressed or implied, No operational assessments have been made by DPA Auctions on this item, it has been photographed ONLY.



### #244 - Tires (NJP1014)

Tires (NJP1014), 2 - Mastercraft 245/60R18, 1 - General 225/70R19.5 tires. Notes: Item Location: Belleville, IL 62222 Equipment Sold "AS IS, WHERE IS": All equipment/property is sold "AS IS, WHERE IS" with no warranty or guarantees, expressed or implied, No operational assessments have been made by DPA Auctions on this item, it has been photographed ONLY.



### #245 - 2 Horse Trailer (DR8615)

2 Horse Trailer (DR8615), tandem axle 2 horse trailer, rear double doors, bumper hitch. Notes: Trailer has NO TITLE. Item Location: Lincoln, MO 65338 Equipment Sold "AS IS, WHERE IS": All equipment/property is sold "AS IS, WHERE IS" with no warranty or guarantees, expressed or implied, No operational assessments have been made by DPA Auctions on this item, it has been photographed ONLY.



### #246 - 1996 Volvo (DR7401, Unit 13629)

1996 Volvo (DR7401, Unit 13629), NON RUNNER, Cummins diesel engine, 9 speed transmission, tandem axle full screw, air ride suspension, day cab, dual aluminum fuel tanks, 5th wheel plate, cruise control, air conditioning, 295/75R22.5 tires, Budd wheels. Notes: Truck currently does not run. Air compressor drive is OFF, also a piece was taken off fuel pump. Item Location: Obion, TN 38240 Equipment Sold "AS IS, WHERE IS": All equipment/property is sold "AS IS, WHERE IS" with no warranty or guarantees, expressed or implied, No operational assessments have been made by DPA Auctions on this item, it has been photographed ONLY.



### #247 - Hagie Parts (NJP1037)

Hagie Parts (NJP1037) Pallet of Hagie parts. Notes: Item Location: Belleville, IL 62222 Equipment Sold "AS IS, WHERE IS": All equipment/property is sold "AS IS, WHERE IS" with no warranty or guarantees, expressed or implied, No operational assessments have been made by DPA Auctions on this item, it has been photographed ONLY.



### #248 - 1989 Fruehauf Van (DR8619)

1989 Fruehauf Van (DR8619), 28' single axle van trailer, NEW rear roll up door in 2015, rear lift gate is 12 volt electric/hydraulic, curb side door, 22.5 tires. Notes: Item Location: Mound City, MO 64470 Equipment Sold "AS IS, WHERE IS": All equipment/property is sold "AS IS, WHERE IS" with no warranty or guarantees, expressed or implied, No operational assessments have been made by DPA Auctions on this item, it has been photographed ONLY.



### #249 - 2007 Case IH 1200 Planter (DR8618)

2007 Case IH 1200 Planter (DR8618), 16R 30", pivot transport, bulk fill, Pro 600 monitor, Tru Count row clutches, Yetter adjustable row cleaners, hydraulic markers, PTO pump, insecticide boxes, 16.5L-16.1 tires. Notes: Item Location: Laurel, NE 68745 Equipment Sold "AS IS, WHERE IS": All equipment/property is sold "AS IS, WHERE IS" with no warranty or guarantees, expressed or implied, No operational assessments have been made by DPA Auctions on this item, it has been photographed ONLY.



### #250 - 2007 Par-Kan Wagon (DR8599)

2007 Par-Kan Wagon (DR8599), hydraulic weigh/seed wagon, 18hp gas engine, digital scale head, extension auger, tandem axle gear, roll over tarp, all lights work, shows 112 hours. Notes: Like new, always shedded. All functions as it should. Item Location: Ashland, IL 62612 Equipment Sold "AS IS, WHERE IS": All equipment/property is sold "AS IS, WHERE IS" with no warranty or guarantees, expressed or implied, No operational assessments have been made by DPA Auctions on this item, it has been photographed ONLY.



---

**#251 - 1997 Terra Gator 1803 Unit# 15774 (DR6680)**

1997 Terra Gator 1803 Unit# 15774 (DR6680), Cat diesel engine, 10 speed transmission, 1800 gallon stainless steel liquid system, 60/80' boom, 30" centers, Dickey-john controller, Trimble light bar swathing, foam markers, stainless steel foam tank, stainless steel chemical inductor, saddle mount rinse tank, 66X43.00-25 tires, shows 35,643 miles. Notes: One owner bought NEW, always shedded. All functions as it should. Item Location: East Prairie, MO 63845 Equipment Sold "AS IS, WHERE IS": All equipment/property is sold "AS IS, WHERE IS" with no warranty or guarantees, expressed or implied, No operational assessments have been made by DPA Auctions on this item, it has been photographed ONLY.



---

**#252 - D&J Dry Tender Cart (DR7460, Unit 11602)**

D&J Dry Tender Cart (DR7460, Unit 11602), 5 ton hydraulic stainless steel dry fertilizer tender cart, side shooter auger, NO PUMP OR MOTOR, tandem axle, 8.25-15 tires. Notes: This unit has had the box taken off but all sells together. Item Location: Kerman, CA 93630 Equipment Sold "AS IS, WHERE IS": All equipment/property is sold "AS IS, WHERE IS" with no warranty or guarantees, expressed or implied, No operational assessments have been made by DPA Auctions on this item, it has been photographed ONLY.



---

**#253 - Pressure Tanks (DR7453, Units 11703 & 11705)**

Pressure Tanks (DR7453, Units 11703 & 11705), this lot is (2) 1000 gallon pressurized tanks. Notes: No gears (2) pressurized tanks. Item Location: Kerman, CA 93630 Equipment Sold "AS IS, WHERE IS": All equipment/property is sold "AS IS, WHERE IS" with no warranty or guarantees, expressed or implied, No operational assessments have been made by DPA Auctions on this item, it has been photographed ONLY.



---

**#254 - 2013 Terra Gator 9300 (DR8603 Unit 8597)**

2013 Terra Gator 9300 (DR8603 Unit 8597), diesel engine, New Leader G4 hydraulic stainless steel dry spinner box, Multiplier ready, shows 2600 hours. Notes: Machine was roll completely over landed on wheels. It was drove back to the shop from the accident site. Does have some frame damage as well. Call Mike for more details. Item Location: Roanoke, IL 61561 Equipment Sold "AS IS, WHERE IS": All equipment/property is sold "AS IS, WHERE IS" with no warranty or guarantees, expressed or implied, No operational assessments have been made by DPA Auctions on this item, it has been photographed ONLY.



---

**#255 - Bush Hog Rotary Cutter (AL320)**

Bush Hog Rotary Cutter (AL320), 12' wide, 3 section fixed, pull or three point type, 540 PTO, solid rear wheels, thick heavy metal decking, new PTO shaft and slip clutch in 2017, left gear box needs new bottom of casing, other two gear box's are good and working. Notes: Item Location: Hardy, NE 68943 Equipment Sold "AS IS, WHERE IS": All equipment/property is sold "AS IS, WHERE IS" with no warranty or guarantees, expressed or implied, No operational assessments have been made by DPA Auctions on this item, it has been photographed ONLY.



---

**#256 - Fence Post (AL319)**

Fence Post (AL319), T-Post, concrete post, two large concrete corner post. Notes: Item Location: Hardy, NE 68943 Equipment Sold "AS IS, WHERE IS": All equipment/property is sold "AS IS, WHERE IS" with no warranty or guarantees, expressed or implied, No operational assessments have been made by DPA Auctions on this item, it has been photographed ONLY.



---

**#257 - Easy Edger Sheet Metal Bending Tool (KMK515)**

Easy Edger Sheet Metal Bending Tool (KMK515), Easy Edger, used for bending angles in sheet metal. Notes: Item Location: Doniphan, NE 68832 Equipment Sold "AS IS, WHERE IS": All equipment/property is sold "AS IS, WHERE IS" with no warranty or guarantees, expressed or implied, No operational assessments have been made by DPA Auctions on this item, it has been photographed ONLY.



---

**#258 - Sheet Metal Bending Tool (KMK514)**

Sheet Metal Bending Tool (KMK514), used for bending angles in sheet metal. Notes: Item Location: Doniphan, NE 68832 Equipment Sold "AS IS, WHERE IS": All equipment/property is sold "AS IS, WHERE IS" with no warranty or guarantees, expressed or implied, No operational assessments have been made by DPA Auctions on this item, it has been photographed ONLY.





### #259 - Flanging Tool (KMK516)

Flanging Tool (KMK516), used for flanging copper lines for fire suppression. Notes: Item Location: Doniphan, NE 68832 Equipment Sold "AS IS, WHERE IS": All equipment/property is sold "AS IS, WHERE IS" with no warranty or guarantees, expressed or implied, No operational assessments have been made by DPA Auctions on this item, it has been photographed ONLY.



### #260 - Geith Hydraulic Thumb (AL326)

Geith Hydraulic Thumb (AL326), fits 50,000 and up excavator. Notes: Item Location: Aplington, IA 50604 Equipment Sold "AS IS, WHERE IS": All equipment/property is sold "AS IS, WHERE IS" with no warranty or guarantees, expressed or implied, No operational assessments have been made by DPA Auctions on this item, it has been photographed ONLY.



### #261 - Cement Culverts (AL325)

Cement Culverts (AL325), 40" inside diameter, 8' long. Notes: Item Location: Aplington, IA 50604 Equipment Sold "AS IS, WHERE IS": All equipment/property is sold "AS IS, WHERE IS" with no warranty or guarantees, expressed or implied, No operational assessments have been made by DPA Auctions on this item, it has been photographed ONLY.



### #262 - 2003 Case IH SPX 3150 Patriot Sprayer (AL322)

2003 Case IH SPX 3150 Patriot Sprayer (AL322), 5.9 Cummins diesel engine, hydrostatic transmission, air conditioning and heat, AM/FM radio, Raven 460 controller, 75' booms, 750 gallon poly tank, foam marker, rinse tank, light bar, Michelin 320/85R38 AGRIBIB tires, shows 5977 hours. Notes: Tachometer does not work properly, weak wheel motors. Item Location: Bellflower, MO 63333 Equipment Sold "AS IS, WHERE IS": All equipment/property is sold "AS IS, WHERE IS" with no warranty or guarantees, expressed or implied, No operational assessments have been made by DPA Auctions on this item, it has been photographed ONLY.



### #263 - 18 Inch 3 Way Distributor (PD721)

18 Inch 3 Way Distributor (PD721), 3 x 18 inch slid gate valves included. Notes: Item Location: Waterloo, IL 62298 Equipment Sold "AS IS, WHERE IS": All equipment/property is sold "AS IS, WHERE IS" with no warranty or guarantees, expressed or implied, No operational assessments have been made by DPA Auctions on this item, it has been photographed ONLY.



### #264 - Drive Over Grain Dump Pit (PD720)

Drive Over Grain Dump Pit (PD720), dual 10 inch augers, hydraulic drive, complete rebuild one season ago. Notes: Item Location: Waterloo, IL 62298 Equipment Sold "AS IS, WHERE IS": All equipment/property is sold "AS IS, WHERE IS" with no warranty or guarantees, expressed or implied, No operational assessments have been made by DPA Auctions on this item, it has been photographed ONLY.



### #265 - 6 Inch Down Spouting (PD719)

6 Inch Down Spouting (PD719), 1 is 54 foot, 1 is 48 foot, 5 are 30 foot. Notes: Item Location: Waterloo, IL 62298 Equipment Sold "AS IS, WHERE IS": All equipment/property is sold "AS IS, WHERE IS" with no warranty or guarantees, expressed or implied, No operational assessments have been made by DPA Auctions on this item, it has been photographed ONLY.



### #266 - 18 Inch Dual Distributor (PD718)

18 Inch Dual Distributor (PD718), electric power to change bin to bin. Notes: Item Location: Waterloo, IL 62298 Equipment Sold "AS IS, WHERE IS": All equipment/property is sold "AS IS, WHERE IS" with no warranty or guarantees, expressed or implied, No operational assessments have been made by DPA Auctions on this item, it has been photographed ONLY.



### #267 - Trunking Grain Leg (PD717)

Trunking Grain Leg (PD717), 8 inch x 10 inch, 60 foot discharge, 25HP single phase motor. Notes: Item Location: Waterloo, IL 62298 Equipment Sold "AS IS, WHERE IS": All equipment/property is sold "AS IS, WHERE IS" with no warranty or guarantees, expressed or implied, No operational assessments have been made by DPA Auctions on this item, it has been photographed ONLY.



---

### #268 - Drive Over Grain Dump Pit (PD716)

Drive Over Grain Dump Pit (PD716), dual 10 inch hydraulic drive. Notes: Item Location: Waterloo, IL 62298 Equipment Sold "AS IS, WHERE IS": All equipment/property is sold "AS IS, WHERE IS" with no warranty or guarantees, expressed or implied, No operational assessments have been made by DPA Auctions on this item, it has been photographed ONLY.



---

### #269 - Electrical Enclosure Panel Box (PD722)

Electrical Enclosure Panel Box (PD722), 6 foot x 7 foot, 2 door front and 2 door back side, weather proof. Notes: Item Location: Waterloo, IL 62298 Equipment Sold "AS IS, WHERE IS": All equipment/property is sold "AS IS, WHERE IS" with no warranty or guarantees, expressed or implied, No operational assessments have been made by DPA Auctions on this item, it has been photographed ONLY.



---

### #270 - Vivo! QuickLabel Systems Printer (KMK513)

Vivo! QuickLabel Systems Printer (KMK513), the Vivo! is an electrophotographic digital label printing system that prints photo-quality color labels on roll-fed label stock, allowing on-demand label printing with variable label content, including photos, graphics, and barcodes, the toner-based Vivo! prints labels on-demand, allowing manufacturers to quickly label their products according to sales orders, this unit was purchased new in 2007 and used to print product labels for ag chemical products, the printer was operational when taken out of service in 2014 but is being sold (as-is) and with no training or support to help you get the system working, support and information about this printer can be accessed by contacting Quick Label Systems at 1-877-757-7978 or visiting [www.quicklabel.com](http://www.quicklabel.com). additionally you can contact us prior to the close of the auction and we can email you the user guide (174 pages) that should answer the questions you might have, also selling with the printer is the HP laptop that was used to run the printer, it is an older laptop (HP Pavilion ze115 with Windows XP) but is loaded with the software and drivers needed to run the printer, in addition, we have the original software and drivers on the disks that came with the printer, also included in the purchase is the (dongle) which was included with the purchase, this (dongle) is plugged into the computer you are using to run the printer, it is the key that allows the user to access and use the proprietary Vivo software, in addition, the laptop is loaded with the basic Microsoft Office package including, Word, Excel, PowerPoint, Publisher, Outlook Express. Notes: Item Location: Russell, KS 67665 Equipment Sold "AS IS, WHERE IS": All equipment/property is sold "AS IS, WHERE IS" with no warranty or guarantees, expressed or implied, No operational assessments have been made by DPA Auctions on this item, it has been photographed ONLY.



---

### #271 - Off-Set Vertical Smoker (KMK265)

Off-Set Vertical Smoker (KMK265), real wood fired / coal fired pit BBQ, very heavy built, 3/8" cook chamber, mounted on a very heavy frame with casters for rolling on hard surfaces, ball-valve for grease drain on bottom of cook chamber, dimensions: vertical cook chamber is 48" tall, inside diameter is roughly 23", uses standard "Webber" sized 21" cooking grates (2) and room to add more, fire box is 17.5" wide x 14.5" tall x 24" long, height from ground to top of smoke stack is 87". Notes: We will load this cooker with our forklift. It is too heavy to be loaded/off loaded by hand. Food shown is for demonstrational purposes only and not included in the sale of the cooker. Item Location: Russell, KS 67665 Equipment Sold "AS IS, WHERE IS": All equipment/property is sold "AS IS, WHERE IS" with no warranty or guarantees, expressed or implied, No operational assessments have been made by DPA Auctions on this item, it has been photographed ONLY.



---

### #272 - NH3 Tank- Pig Cooker Project (KMK512)

NH3 Tank- Pig Cooker Project (KMK512), unique 3-wheel chassis old NH3 tank, heavy cast iron, 11' long undercarriage/bottom of the tank is 36" above ground, tank length is 112", tank diameter is 36", estimated 450 to 500 gallon tank. Notes: Doubtful the tank will pass inspection. Ideas for use.. Big cooker/smoker, could be set up with ferris-wheel type rack system to cook a lot of food or a whole hog cooker, or just a big smoker with a fire-box added to the end of it. Water tank, float to keep stock tank filled, drip irrigation, big shop heater for the winter, scrap it for iron and use the trailer for another project. Item Location: Russell, KS 67665 Equipment Sold "AS IS, WHERE IS": All equipment/property is sold "AS IS, WHERE IS" with no warranty or guarantees, expressed or implied, No operational assessments have been made by DPA Auctions on this item, it has been photographed ONLY.



---

### #273 - 1998 IHC 3000E Cab/Chassis Floater (PZ8699, Unit 775)

1998 IHC 3000E Cab/Chassis Floater (PZ8699, Unit 775), diesel engine, transmission lever is gone, air conditioning, heat, Am/Fm cassette radio, 48x25.00-20 front tires, Alliance 1000/50R25 rear tires, shows 6718 miles, 68,821 miles. Notes: This truck does NOT run, parts have been removed, has been sitting for 3 years. Please contact seller for further information. Item Location: Jacksonville, IL 62650 Equipment Sold "AS IS, WHERE IS": All equipment/property is sold "AS IS, WHERE IS" with no warranty or guarantees, expressed or implied, No operational assessments have been made by DPA Auctions on this item, it has been photographed ONLY.



### #274 - 2001 John Deere 9550 Combine (KMK509)

2001 John Deere 9550 Combine (KMK509), John Deere diesel engine, hydrostatic drive, 4WD, AM/FM radio, heat and air conditioning, buddy seat, moisture/yield wiring harness, auto header height control, hydraulic for and aft reel control, chopper plus add on chaff spreader, chrome cylinder bars, concave, clean grain chain, and return grain chain with 800 acres on them, new 30.5 LR 32 front tires, 18.4 R 26 rear tires in very good shape, no cracking in the sidewalls, shows 3,226 engine hours, shows 2375 separator hours. Notes: Always stored inside when not in use. Combine is field ready right now. Seller can handle loading if buyer needs it shipped. Item Location: Neodesha, KS 66757 Equipment Sold "AS IS, WHERE IS": All equipment/property is sold "AS IS, WHERE IS" with no warranty or guarantees, expressed or implied, No operational assessments have been made by DPA Auctions on this item, it has been photographed ONLY.



### #275 - Brent 420 Auger Wagon (KMK511)

Brent 420 Auger Wagon (KMK511), 1998, 400 bushel wagon, single axle, folding auger, auger housing and flighting in excellent condition, 1000 pto, 20.8-38 tires. Notes: Field ready. In really good shape. Has not moved many bushels in it life. Spent a lot of time in the barn. Item Location: Neodesha, KS 66757 Equipment Sold "AS IS, WHERE IS": All equipment/property is sold "AS IS, WHERE IS" with no warranty or guarantees, expressed or implied, No operational assessments have been made by DPA Auctions on this item, it has been photographed ONLY.



### #276 - 2015 Ogden Hay Rake (KMK510)

2015 Ogden Hay Rake (KMK510), hybrid hay runner, 10 wheel rake, hydraulic fold, pull type, single axle, 205 / 75 D 15 tires. Notes: Bought new 2 years ago, approximately 1000 acres on it. Used it to put 14' windrows together. Getting out of haying. Item Location: Neodesha, KS 66757 Equipment Sold "AS IS, WHERE IS": All equipment/property is sold "AS IS, WHERE IS" with no warranty or guarantees, expressed or implied, No operational assessments have been made by DPA Auctions on this item, it has been photographed ONLY.



### #277 - 1987 Komatsu D66S Track Loader (WZ001)

1987 Komatsu D66S Track Loader (WZ001), Komatsu D66S-1, Komatsu 6 cylinder diesel engine, hydrostatic transmission, pedal steering, full cab, heat and air conditioning, heat works great, ac needs some work, 3 yard toothed bucket, tracks and under carriage in great shape, hour meter has been replaced approximate hours are 10,030, shows 430 hours. Notes: Great running and idle machine used around the farm. Item Location: Neola, IA 51559 Equipment Sold "AS IS, WHERE IS": All equipment/property is sold "AS IS, WHERE IS" with no warranty or guarantees, expressed or implied, No operational assessments have been made by DPA Auctions on this item, it has been photographed ONLY.



### #278 - 2002 Sea Ray 182 BR (PD1049)

2002 Sea Ray 182 BR (PD1049), Mercruiser 4.3 Liter, cover, in floor storage, swing tongue. Notes: Item Location: Valley, NE 68064 Equipment Sold "AS IS, WHERE IS": All equipment/property is sold "AS IS, WHERE IS" with no warranty or guarantees, expressed or implied, No operational assessments have been made by DPA Auctions on this item, it has been photographed ONLY.



### #279 - 2016 John Deere 2510L Nitrogen Applicator (TH254)

2016 John Deere 2510L Nitrogen Applicator (TH254), 36 row, 20" spacing, can be reconfigured to 23 row 30" spacing, 1800 gallon tank, 10 gallon rinse tank, delivery system ran by John Deere rate controller, 380/90R54 singles, coulter with injectors. Notes: Item Location: Sibley, IA 51249 Equipment Sold "AS IS, WHERE IS": All equipment/property is sold "AS IS, WHERE IS" with no warranty or guarantees, expressed or implied, No operational assessments have been made by DPA Auctions on this item, it has been photographed ONLY.



### #280 - 1998 John Deere 856 12 Row Cultivator (TH252)

1998 John Deere 856 12 Row Cultivator (TH252), Red ball monitors, lil thumper Demco piston pump, c shanks with spring, 30" spacing. Notes: Item Location: Sibley, IA 51249 Equipment Sold "AS IS, WHERE IS": All equipment/property is sold "AS IS, WHERE IS" with no warranty or guarantees, expressed or implied, No operational assessments have been made by DPA Auctions on this item, it has been photographed ONLY.



### #281 - 2000 John Deere 856 12 Row Cultivator (TH253)

2000 John Deere 856 12 Row Cultivator (TH253), Red ball monitors, lil thumper Demco double piston pump, c shanks with spring, 30" spacing. Notes: Item Location: Sibley, IA 51249 Equipment Sold "AS IS, WHERE IS": All equipment/property is sold "AS IS, WHERE IS" with no warranty or guarantees, expressed or implied, No operational assessments have been made by DPA Auctions on this item, it has been photographed ONLY.



---

### #281A - 1979 John Deere 6000 Hi Boy (TH255)

1979 John Deere 6000 Hi Boy (TH255), 60' boom, drop hoses for side dressing, 320 gallon tank. Notes: Item Location: Sibley, IA 51249 Equipment Sold "AS IS, WHERE IS": All equipment/property is sold "AS IS, WHERE IS" with no warranty or guarantees, expressed or implied, No operational assessments have been made by DPA Auctions on this item, it has been photographed ONLY.



---

### #282 - 2014 Harvest International 1032 Load Out Auger (ED495)

2014 Harvest International 1032 Load Out Auger (ED495), auger is in great shape, only handled about 200,000 bushels, is being sold with EITHER a 3hp OR single phase motor. Notes: Item Location: Foster, IN 47932 Equipment Sold "AS IS, WHERE IS": All equipment/property is sold "AS IS, WHERE IS" with no warranty or guarantees, expressed or implied, No operational assessments have been made by DPA Auctions on this item, it has been photographed ONLY.



---

### #283 - Kewanee 1020 Disk & 24ft Harrow Cart (DL238)

Kewanee 1020 Disk & 24ft Harrow Cart (DL238), flat fold 20ft disk. Notes: Item Location: Wyanet, IL 61379 Equipment Sold "AS IS, WHERE IS": All equipment/property is sold "AS IS, WHERE IS" with no warranty or guarantees, expressed or implied, No operational assessments have been made by DPA Auctions on this item, it has been photographed ONLY.



---

### #284 - 2001 Kidron Van Trailer (AL327)

2001 Kidron Van Trailer (AL327), 28', set up with 2 2000 gallon heavy poly tanks, 2" pump, 30 gallon chem inductor, 2 siphon lines and meter to siphon out of 250 gallon totes, rear stair access, e-track, single axle with landing gear. Notes: Item Location: Webster, IA 52355 Equipment Sold "AS IS, WHERE IS": All equipment/property is sold "AS IS, WHERE IS" with no warranty or guarantees, expressed or implied, No operational assessments have been made by DPA Auctions on this item, it has been photographed ONLY.



---

### #285 - 1984 Fruehauf Tanker Trailer (DL237)

1984 Fruehauf Tanker Trailer (DL237), 3 compartment, 1st compartment is 2500 gal, 2nd compartment is 1250 gal, 3rd compartment is 2500 gal, 6250 gal total capacity, excellent tires 24.5 LP aluminum outside rims, 42ft long, MC 307, insulated, straight round, stainless steel barrel, double bulkhead, center discharge, 3 pressure manholes, front & rear aluminum fenders, thermometer, hose trough, spring suspension. Notes: Item Location: Roca, NE 68430 Equipment Sold "AS IS, WHERE IS": All equipment/property is sold "AS IS, WHERE IS" with no warranty or guarantees, expressed or implied, No operational assessments have been made by DPA Auctions on this item, it has been photographed ONLY.



---

### #286 - Culvert (TR4226)

Culvert (TR4226), steel Approx 18' culvert. Notes: See pictures for holes. Item Location: Burr Oak, KS 66936 Equipment Sold "AS IS, WHERE IS": All equipment/property is sold "AS IS, WHERE IS" with no warranty or guarantees, expressed or implied, No operational assessments have been made by DPA Auctions on this item, it has been photographed ONLY.



---

### #287 - Culvert (TR4230)

Culvert (TR4230), 22' steel culvert. Notes: Item Location: Burr Oak, KS 66936 Equipment Sold "AS IS, WHERE IS": All equipment/property is sold "AS IS, WHERE IS" with no warranty or guarantees, expressed or implied, No operational assessments have been made by DPA Auctions on this item, it has been photographed ONLY.



---

### #288 - Culvert (TR4231)

Culvert (TR4231), 10' steel culvert. Notes: Item Location: Burr Oak, KS 66936 Equipment Sold "AS IS, WHERE IS": All equipment/property is sold "AS IS, WHERE IS" with no warranty or guarantees, expressed or implied, No operational assessments have been made by DPA Auctions on this item, it has been photographed ONLY.



---

### #289 - Bale Rack (TR4211)

Bale Rack (TR4211), 16' steel bale rack. Notes: Contents on top of rack do not sell. Item Location: Burr Oak, KS 66936 Equipment Sold "AS IS, WHERE IS": All equipment/property is sold "AS IS, WHERE IS" with no warranty or guarantees, expressed or implied, No operational assessments have been made by DPA Auctions on this item, it has been photographed ONLY.





### #290 - John Deere Plow (TR4217)

John Deere Plow (TR4217), 6 bottom blow, coulters, hydraulic, 3 point. Notes: Item Location: Burr Oak, KS 66936 Equipment Sold "AS IS, WHERE IS": All equipment/property is sold "AS IS, WHERE IS" with no warranty or guarantees, expressed or implied, No operational assessments have been made by DPA Auctions on this item, it has been photographed ONLY.



### #291 - Farm Hand Bale Stack Mover (TR4234)

Farm Hand Bale Stack Mover (TR4234), 6 roller chains, hydraulic, pin hitch, PTO. Notes: Contents on top of rack do not sell. Item Location: Burr Oak, KS 66936 Equipment Sold "AS IS, WHERE IS": All equipment/property is sold "AS IS, WHERE IS" with no warranty or guarantees, expressed or implied, No operational assessments have been made by DPA Auctions on this item, it has been photographed ONLY.



### #292 - Binkley 4000 Bale Mover (TR4236)

Binkley 4000 Bale Mover (TR4236), port o bale, round bale mover, hydraulic, hitch pin. Notes: Item Location: Burr Oak, KS 66936 Equipment Sold "AS IS, WHERE IS": All equipment/property is sold "AS IS, WHERE IS" with no warranty or guarantees, expressed or implied, No operational assessments have been made by DPA Auctions on this item, it has been photographed ONLY.



### #293 - Saddle tanks (TR4222)

Saddle tanks (TR4222), (3) poly 110 gal tanks, on mounts with bracket, and hoses and pump. Notes: Item Location: Burr Oak, KS 66936 Equipment Sold "AS IS, WHERE IS": All equipment/property is sold "AS IS, WHERE IS" with no warranty or guarantees, expressed or implied, No operational assessments have been made by DPA Auctions on this item, it has been photographed ONLY.



### #294 - Saddle Tanks (TR4216)

Saddle Tanks (TR4216), (2) 100 gal poly saddle tanks with mounts. Notes: Item Location: Burr Oak, KS 66936 Equipment Sold "AS IS, WHERE IS": All equipment/property is sold "AS IS, WHERE IS" with no warranty or guarantees, expressed or implied, No operational assessments have been made by DPA Auctions on this item, it has been photographed ONLY.



### #295 - Hoyker Front End Loader (TR4133)

Hoyker Front End Loader (TR4133), Hoyker K5 loader, bucket, grapple, heavy duty cylinder, mounts and hoses. Notes: Item Location: Burr Oak, KS 66936 Equipment Sold "AS IS, WHERE IS": All equipment/property is sold "AS IS, WHERE IS" with no warranty or guarantees, expressed or implied, No operational assessments have been made by DPA Auctions on this item, it has been photographed ONLY.



### #296 - Sickle Mower (TR4223)

Sickle Mower (TR4223), Sickle mower. Notes: Item Location: Burr Oak, KS 66936 Equipment Sold "AS IS, WHERE IS": All equipment/property is sold "AS IS, WHERE IS" with no warranty or guarantees, expressed or implied, No operational assessments have been made by DPA Auctions on this item, it has been photographed ONLY.



### #297 - Sun Mast Rotary Mower (TR4220)

Sun Mast Rotary Mower (TR4220), rotary mower, PTO drive. Notes: Item Location: Burr Oak, KS 66936 Equipment Sold "AS IS, WHERE IS": All equipment/property is sold "AS IS, WHERE IS" with no warranty or guarantees, expressed or implied, No operational assessments have been made by DPA Auctions on this item, it has been photographed ONLY.



### #298 - John Deere Rotary Mower (TR4221)

John Deere Rotary Mower (TR4221), model 613, PTO drive, 3pt. Notes: Item Location: Burr Oak, KS 66936 Equipment Sold "AS IS, WHERE IS": All equipment/property is sold "AS IS, WHERE IS" with no warranty or guarantees, expressed or implied, No operational assessments have been made by DPA Auctions on this item, it has been photographed ONLY.



### #299 - Sears ST/16 Mower (TR4213)

Sears ST/16 Mower (TR4213), front snow blower attachment, mowing deck attachment, tire chains, gas engine, Hi/LO 4 speed transmission. Notes: Item Location: Burr Oak, KS 66936 Equipment Sold "AS IS, WHERE IS": All equipment/property is sold "AS IS, WHERE IS" with no warranty or guarantees, expressed or implied, No operational assessments have been made by DPA Auctions on this item, it has been photographed ONLY.



---

### #300 - Portable Gerator Welder (TR4238)

Portable Gerator Welder (TR4238), portable Westinghouse welder, 200 amp. Notes: Item Location: Burr Oak, KS 66936 Equipment Sold "AS IS, WHERE IS": All equipment/property is sold "AS IS, WHERE IS" with no warranty or guarantees, expressed or implied, No operational assessments have been made by DPA Auctions on this item, it has been photographed ONLY.



---

### #301 - IHC 5 bottom Plow (TR4131)

IHC 5 bottom Plow (TR4131), 5 bottom, coulters, model 710. Notes: Item Location: Burr Oak, KS 66936 Equipment Sold "AS IS, WHERE IS": All equipment/property is sold "AS IS, WHERE IS" with no warranty or guarantees, expressed or implied, No operational assessments have been made by DPA Auctions on this item, it has been photographed ONLY.



---

### #302 - John Blue Pump (RMC254)

John Blue Pump (RMC254), model 4900 piston pump, completely rebuilt, not used since fresh rebuild. Notes: Item Location: Holly Bluff, MS 39088 Equipment Sold "AS IS, WHERE IS": All equipment/property is sold "AS IS, WHERE IS" with no warranty or guarantees, expressed or implied, No operational assessments have been made by DPA Auctions on this item, it has been photographed ONLY.



---

### #303 - Tires (TR4228)

Tires (TR4228) (3) Tires, on 10 bolt rims, 23.1-30 size (one has different rim. Notes: Item Location: Burr Oak, KS 66936 Equipment Sold "AS IS, WHERE IS": All equipment/property is sold "AS IS, WHERE IS" with no warranty or guarantees, expressed or implied, No operational assessments have been made by DPA Auctions on this item, it has been photographed ONLY.



---

### #304 - Tires (TR4127)

Tires (TR4127), (3) tires on rims, 11R-24.5 tires. Notes: Item Location: Burr Oak, KS 66936 Equipment Sold "AS IS, WHERE IS": All equipment/property is sold "AS IS, WHERE IS" with no warranty or guarantees, expressed or implied, No operational assessments have been made by DPA Auctions on this item, it has been photographed ONLY.



---

### #305 - Tires (TR4129)

Tires (TR4129), (3) 285/75R24.5 tires. Notes: Item Location: Burr Oak, KS 66936 Equipment Sold "AS IS, WHERE IS": All equipment/property is sold "AS IS, WHERE IS" with no warranty or guarantees, expressed or implied, No operational assessments have been made by DPA Auctions on this item, it has been photographed ONLY.



---

### #306 - Tires (TR4128)

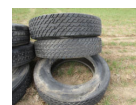
Tires (TR4128), (3) tires on rims, 11R-24.5 tires. Notes: Item Location: Burr Oak, KS 66936 Equipment Sold "AS IS, WHERE IS": All equipment/property is sold "AS IS, WHERE IS" with no warranty or guarantees, expressed or implied, No operational assessments have been made by DPA Auctions on this item, it has been photographed ONLY.



---

### #307 - Tires (TR4130)

Tires (TR4130), (3) 285/80R24.5 tires. Notes: Item Location: Burr Oak, KS 66936 Equipment Sold "AS IS, WHERE IS": All equipment/property is sold "AS IS, WHERE IS" with no warranty or guarantees, expressed or implied, No operational assessments have been made by DPA Auctions on this item, it has been photographed ONLY.



---

### #308 - John Deere 4850 Tractor (TR4137)

John Deere 4850 Tractor (TR4137) Model 4850, diesel engine, PTO, 5741 hours, cab heat/air, AM/FM, power shift, 18.4R42 rear duals, 3 port hydraulics. Notes: Brakes need replaced. Item Location: Burr Oak, KS 66936 Equipment Sold "AS IS, WHERE IS": All equipment/property is sold "AS IS, WHERE IS" with no warranty or guarantees, expressed or implied, No operational assessments have been made by DPA Auctions on this item, it has been photographed ONLY.



---

### #309 - Farmall 400 Tractor (TR4135)

Farmall 400 Tractor (TR4135), PTO, model 400, diesel engine, NON Runner, (Engine does turn). Notes: Item Location: Burr Oak, KS 66936 Equipment Sold "AS IS, WHERE IS": All equipment/property is sold "AS IS, WHERE IS" with no warranty or guarantees, expressed or implied, No operational assessments have been made by DPA Auctions on this item, it has been photographed ONLY.



---

### #310 - IHC F12 Tractor (TR4210)

IHC F12 Tractor (TR4210) PTO, F12 tractor, gas engine. Notes: Does not run. Item Location: Burr Oak, KS 66936 Equipment Sold "AS IS, WHERE IS": All equipment/property is sold "AS IS, WHERE IS" with no warranty or guarantees, expressed or implied, No operational assessments have been made by DPA Auctions on this item, it has been photographed ONLY.



---

### #311 - 1999 West Wind Gooseneck Trailer (TR4139)

1999 West Wind Gooseneck Trailer (TR4139), 40' steel flatbed trailer, triple axle, spring ride suspension, 21,000 GVW, ST235/80R16 tires, enclosed pullout heavy duty ramps. Notes: Item Location: Burr Oak, KS 66936 Equipment Sold "AS IS, WHERE IS": All equipment/property is sold "AS IS, WHERE IS" with no warranty or guarantees, expressed or implied, No operational assessments have been made by DPA Auctions on this item, it has been photographed ONLY.



---

### #312 - 1999 Eby Livestock Trailer (TR4201)

1999 Eby Livestock Trailer (TR4201), tandem axle, rebuilt, original floor is 70%, 285/75R24.5 tires, air brakes. Notes: 5th wheel was rebuilt after light layover. Item Location: Burr Oak, KS 66936 Equipment Sold "AS IS, WHERE IS": All equipment/property is sold "AS IS, WHERE IS" with no warranty or guarantees, expressed or implied, No operational assessments have been made by DPA Auctions on this item, it has been photographed ONLY.



---

### #313 - 1996 Kenworth W900L (TR4200)

1996 Kenworth W900L (TR4200), 550 Hp Detroit Series 60 Diesel engine, 13 speed transmission, AM/FM CD player, tall sleeper, TV, Cruise control, air brakes, air ride suspension, 24.5 tires, only 500 miles on the fronts, dual aluminum tanks, aluminum grill guard, 3.70 gear ratio, 1,095,362 miles, (Add approx 20K miles to total). Notes: New top on motor only 50K miles ago, newer front axle. Item Location: Burr Oak, KS 66936 Equipment Sold "AS IS, WHERE IS": All equipment/property is sold "AS IS, WHERE IS" with no warranty or guarantees, expressed or implied, No operational assessments have been made by DPA Auctions on this item, it has been photographed ONLY.



---

### #314 - Sportsman 500 ATV (TR4203)

Sportsman 500 ATV (TR4203), Does not run for parts only. Notes: Item Location: Burr Oak, KS 66936 Equipment Sold "AS IS, WHERE IS": All equipment/property is sold "AS IS, WHERE IS" with no warranty or guarantees, expressed or implied, No operational assessments have been made by DPA Auctions on this item, it has been photographed ONLY.



---

### #315 - 1993 Dodge Dakota (TR4138)

1993 Dodge Dakota (TR4138), gas engine, automatic transmission, AM/FM aftermarket CD player, Sony speaker system, heat/AC, 4x4, 31X10.5R15LT tires, shows 224,104 miles. Notes: Item Location: Burr Oak, KS 66936 Equipment Sold "AS IS, WHERE IS": All equipment/property is sold "AS IS, WHERE IS" with no warranty or guarantees, expressed or implied, No operational assessments have been made by DPA Auctions on this item, it has been photographed ONLY.



---

### #316 - Degelman Blade (TR4132)

Degelman Blade (TR4132), Degelman model 10HD blade, mounting bracket, hydraulic hoses, cylinders. Notes: Item Location: Burr Oak, KS 66936 Equipment Sold "AS IS, WHERE IS": All equipment/property is sold "AS IS, WHERE IS" with no warranty or guarantees, expressed or implied, No operational assessments have been made by DPA Auctions on this item, it has been photographed ONLY.



---

### #317 - Irrigation Motor (TR4237)

Irrigation Motor (TR4237), Allis Chalmers irrigation diesel motor, came out of a Gleaner combine, ran good when removed from combine. Notes: Item Location: Burr Oak, KS 66936 Equipment Sold "AS IS, WHERE IS": All equipment/property is sold "AS IS, WHERE IS" with no warranty or guarantees, expressed or implied, No operational assessments have been made by DPA Auctions on this item, it has been photographed ONLY.



---

### #318 - IHC 150 Shovel Drill (TR4232)

IHC 150 Shovel Drill (TR4232), 150 shovel wheat drill. Notes: Item Location: Burr Oak, KS 66936 Equipment Sold "AS IS, WHERE IS": All equipment/property is sold "AS IS, WHERE IS" with no warranty or guarantees, expressed or implied, No operational assessments have been made by DPA Auctions on this item, it has been photographed ONLY.



---

### #319 - IHC 7100 Press Drill (TR4229)

IHC 7100 Press Drill (TR4229), Press Drill was used by seller to pack gravel. Notes: Item Location: Burr Oak, KS 66936 Equipment Sold "AS IS, WHERE IS": All equipment/property is sold "AS IS, WHERE IS" with no warranty or guarantees, expressed or implied, No operational assessments have been made by DPA Auctions on this item, it has been photographed ONLY.



---

### #320 - Dolly (TR4225)

Dolly (TR4225), 5th wheel dolly, air hook ups, Pinal hitch, 11R22.5 tires. Notes: Item Location: Burr Oak, KS 66936 Equipment Sold "AS IS, WHERE IS": All equipment/property is sold "AS IS, WHERE IS" with no warranty or guarantees, expressed or implied, No operational assessments have been made by DPA Auctions on this item, it has been photographed ONLY.



---

### #321 - Blade (TR4224)

Blade (TR4224), approx 5' with spring back, and mount, cutting edge. Notes: Item Location: Burr Oak, KS 66936 Equipment Sold "AS IS, WHERE IS": All equipment/property is sold "AS IS, WHERE IS" with no warranty or guarantees, expressed or implied, No operational assessments have been made by DPA Auctions on this item, it has been photographed ONLY.



---

### #322 - Fully Rebuilt CAT Diesel Engine (TR4219)

Fully Rebuilt CAT Diesel Engine (TR4219), CAT engine, fully rebuilt but hasn't been used since rebuilt. Notes: Seller believes engine came out of a D8 Crawler. Item Location: Burr Oak, KS 66936 Equipment Sold "AS IS, WHERE IS": All equipment/property is sold "AS IS, WHERE IS" with no warranty or guarantees, expressed or implied, No operational assessments have been made by DPA Auctions on this item, it has been photographed ONLY.



---

### #323 - Hydraulic Cylinders and Blades (TR4215)

Hydraulic Cylinders and Blades (TR4215) various sizes of blades, and (4) sizes of hydraulic cylinders. Notes: Item Location: Burr Oak, KS 66936 Equipment Sold "AS IS, WHERE IS": All equipment/property is sold "AS IS, WHERE IS" with no warranty or guarantees, expressed or implied, No operational assessments have been made by DPA Auctions on this item, it has been photographed ONLY.



---

### #324 - 3 pt Blade (TR4212)

3 pt Blade (TR4212), 6' steel blade, cutting edge, 3 pt. Notes: Item Location: Burr Oak, KS 66936 Equipment Sold "AS IS, WHERE IS": All equipment/property is sold "AS IS, WHERE IS" with no warranty or guarantees, expressed or implied, No operational assessments have been made by DPA Auctions on this item, it has been photographed ONLY.



---

### #325 - Speed King 10x75 Belt Conveyor (CG510)

Speed King 10x75 Belt Conveyor (CG510), hydraulic lift, 540 pto drive, slight kink in tube, works fine. Notes: Item Location: Canby, MN 56220 Equipment Sold "AS IS, WHERE IS": All equipment/property is sold "AS IS, WHERE IS" with no warranty or guarantees, expressed or implied, No operational assessments have been made by DPA Auctions on this item, it has been photographed ONLY.



---

### #326 - 2009 1535 Universal Field Loader Conveyor (CG512)

2009 1535 Universal Field Loader Conveyor (CG512), new bearings, 10hp single phase motor. Notes: Item Location: Canby, MN 56220 Equipment Sold "AS IS, WHERE IS": All equipment/property is sold "AS IS, WHERE IS" with no warranty or guarantees, expressed or implied, No operational assessments have been made by DPA Auctions on this item, it has been photographed ONLY.





---

### #327 - 2016 Speed King Field Loader Conveyor (CG511)

2016 Speed King Field Loader Conveyor (CG511), stainless steel, Honda gas engine, dolly wheel, good shape. Notes: Item Location: Canby, MN 56220 Equipment Sold "AS IS, WHERE IS": All equipment/property is sold "AS IS, WHERE IS" with no warranty or guarantees, expressed or implied, No operational assessments have been made by DPA Auctions on this item, it has been photographed ONLY.



---

### #328 - International Hough H90 Payloader (MH273)

International Hough H90 Payloader (MH273), Hough H90 Payloader with a 6 yard bucket, starts and runs, will need motor work. Notes: Item Location: Caney, KS 67333 Equipment Sold "AS IS, WHERE IS": All equipment/property is sold "AS IS, WHERE IS" with no warranty or guarantees, expressed or implied, No operational assessments have been made by DPA Auctions on this item, it has been photographed ONLY.



---

### #329 - Michigan 8 Yard Paddle Scraper (MH272)

Michigan 8 Yard Paddle Scraper (MH272), starts and runs, needs 1 tire replaced on front. Notes: Item Location: Caney, KS 67333 Equipment Sold "AS IS, WHERE IS": All equipment/property is sold "AS IS, WHERE IS" with no warranty or guarantees, expressed or implied, No operational assessments have been made by DPA Auctions on this item, it has been photographed ONLY.



---

### #330 - Salford 24' RTSXT (ED479)

Salford 24' RTSXT (ED479), 3 rows of fluted coulters, 3 rows of cones, harrow and basket, 15 inch rubber, under 1500 acres of use. Notes: Item Location: Greenfield, IA 50849 Equipment Sold "AS IS, WHERE IS": All equipment/property is sold "AS IS, WHERE IS" with no warranty or guarantees, expressed or implied, No operational assessments have been made by DPA Auctions on this item, it has been photographed ONLY.



---

### #331 - 1992 Ford F-350 (AL298)

1992 Ford F-350 (AL298), diesel engine, 4x4, manual transmission, am/FM cassette radio, flat bed, dually, LT215/85R16 tires, fifth wheel ball, power windows and locks, shows 109,051 miles. Notes: Item Location: Greenfield, IL 62044 Equipment Sold "AS IS, WHERE IS": All equipment/property is sold "AS IS, WHERE IS" with no warranty or guarantees, expressed or implied, No operational assessments have been made by DPA Auctions on this item, it has been photographed ONLY.



---

### #332 - Superior G7 Indent & Scalping Machine (DL241)

Superior G7 Indent & Scalping Machine (DL241), seed cleaner, decent condition worked well when it was in service hasn't been used for 5 years but has always been kept under roof, this machine was taken out of a Land O Lakes plant nearby, the plant operator claims that it had been recently rebuilt before they quit using it and he fired it up a couple time a year and greased it, the drums have some wear on them but you can still feel a decent edge to them, seller is not sure on the pocket size of the drums. Notes: Seller will not ship this machine but will assist with loading. Item Location: Berthold, ND 58718 Equipment Sold "AS IS, WHERE IS": All equipment/property is sold "AS IS, WHERE IS" with no warranty or guarantees, expressed or implied, No operational assessments have been made by DPA Auctions on this item, it has been photographed ONLY.



---

### #333 - Metal Siding/Roofing (DR8505)

Metal Siding/Roofing (DR8505), NEW UNUSED (44) sheets, American made, White color, 16'-4"long X 36" overlap coverage, Premium Plus Panel G90 Ultra Livestock Profile style, 29 gauge. ALWAYS stored inside. Meets all USA building material engineering codes for Tested Tolerances for wind & snow. USA stamped seal of approval documentation on all products. Notes: Loadout IS available with flexible appointments. Can also offer hardware, trim, corners at wholesale prices. Item Location: Monroe, NE 68647 Equipment Sold "AS IS, WHERE IS": All equipment/property is sold "AS IS, WHERE IS" with no warranty or guarantees, expressed or implied, No operational assessments have been made by DPA Auctions on this item, it has been photographed ONLY.



---

### #334 - Metal Siding/Roofing (DR8506)

Metal Siding/Roofing (DR8506), NEW UNUSED (44) sheets, American made, White color, 16'-4"long X 36" overlap coverage, Premium Plus Panel G90 Ultra Livestock Profile style, 29 gauge. ALWAYS stored inside. Meets all USA building material engineering codes for Tested Tolerances for wind & snow. USA stamped seal of approval documentation on all products. Notes: Loadout IS available with flexible appointments. Can also offer hardware, trim, corners at wholesale prices. Item Location: Monroe, NE 68647 Equipment Sold "AS IS, WHERE IS": All equipment/property is sold "AS IS, WHERE IS" with no warranty or guarantees, expressed or implied, No operational assessments have been made by DPA Auctions on this item, it has been photographed ONLY.



---

### #335 - Metal Siding/Roofing (DR8507)

Metal Siding/Roofing (DR8507), NEW UNUSED (44) sheets, American made, White color, 16'-4"long X 36" overlap coverage, Premium Plus Panel G90 Ultra Livestock Profile style, 29 gauge. ALWAYS stored inside. Meets all USA building material engineering codes for Tested Tolerances for wind & snow. USA stamped seal of approval documentation on all products. Notes: Loadout IS available with flexible appointments. Can also offer hardware, trim, corners at wholesale prices. Item Location: Monroe, NE 68647 Equipment Sold "AS IS, WHERE IS": All equipment/property is sold "AS IS, WHERE IS" with no warranty or guarantees, expressed or implied, No operational assessments have been made by DPA Auctions on this item, it has been photographed ONLY.



---

### #336 - Metal Siding/Roofing (DR8508)

Metal Siding/Roofing (DR8508), NEW UNUSED (44) sheets, American made, White color, 16'-4"long X 36" overlap coverage, Premium Plus Panel G90 Ultra Livestock Profile style, 29 gauge. ALWAYS stored inside. Meets all USA building material engineering codes for Tested Tolerances for wind & snow. USA stamped seal of approval documentation on all products. Notes: Loadout IS available with flexible appointments. Can also offer hardware, trim, corners at wholesale prices. Item Location: Monroe, NE 68647 Equipment Sold "AS IS, WHERE IS": All equipment/property is sold "AS IS, WHERE IS" with no warranty or guarantees, expressed or implied, No operational assessments have been made by DPA Auctions on this item, it has been photographed ONLY.



---

### #338 - 2018 Mission Solar Panels (DR8509)

2018 Mission Solar Panels (DR8509), model MSE340S06J, 340 watt Mono 72 cell, made in USA, (26) panels in this lot, 25 year manufacture warranty, NEW UNUSED. Notes: Loadout IS available with flexible appointments. Item Location: Monroe, NE 68647 Equipment Sold "AS IS, WHERE IS": All equipment/property is sold "AS IS, WHERE IS" with no warranty or guarantees, expressed or implied, No operational assessments have been made by DPA Auctions on this item, it has been photographed ONLY.



---

### #339 - 8' Tin Klocker Leaf Brake (KMK1333)

8' Tin Klocker Leaf Brake (KMK1333), model: TK816, 16 gauge, sheet metal brake. Notes: Item Location: Doniphan, NE 68832 Equipment Sold "AS IS, WHERE IS": All equipment/property is sold "AS IS, WHERE IS" with no warranty or guarantees, expressed or implied, No operational assessments have been made by DPA Auctions on this item, it has been photographed ONLY.



---

### #340 - Tin Klocker 2024 Slitter (KMK1334)

Tin Klocker 2024 Slitter (KMK1334), model: 2024 slitter, capacity 20 gauge. Notes: Item Location: Doniphan, NE 68832 Equipment Sold "AS IS, WHERE IS": All equipment/property is sold "AS IS, WHERE IS" with no warranty or guarantees, expressed or implied, No operational assessments have been made by DPA Auctions on this item, it has been photographed ONLY.



---

### #358 - Semi Fuel Tank Step (MK050)

Semi Fuel Tank Step (MK050), semi fuel tank step, came off of a 24" diameter fuel tank. Brand New never installed. Step is 12" wide. Some hardware included. Notes: Item Location: Randolph, NE 68771 Equipment Sold "AS IS, WHERE IS": All equipment/property is sold "AS IS, WHERE IS" with no warranty or guarantees, expressed or implied, No operational assessments have been made by DPA Auctions on this item, it has been photographed ONLY.



---

### #361 - John Deere Planter Marker (2) (TH256)

John Deere Planter Marker (2) (TH256), John Deere planter marker. Notes: Item Location: Randolph, NE 68771 Equipment Sold "AS IS, WHERE IS": All equipment/property is sold "AS IS, WHERE IS" with no warranty or guarantees, expressed or implied, No operational assessments have been made by DPA Auctions on this item, it has been photographed ONLY.



---

### #362 - 1995 Hydrodyne Ski Boat (KMK517)

1995 Hydrodyne Ski Boat (KMK517), 20' ski boat, inboard PCM 5.8 HO, pro boss GT-40, stereo radio, external speakers, Hydrodyne trailer, single axle, spare tire. Notes: Trailer only has registration, NO TITLE. Item Location: Fremont, NE 68025 Equipment Sold "AS IS, WHERE IS": All equipment/property is sold "AS IS, WHERE IS" with no warranty or guarantees, expressed or implied, No operational assessments have been made by DPA Auctions on this item, it has been photographed ONLY.



---

### #363 - 1996 Voyager John Boat (KMK519)

1996 Voyager John Boat (KMK519), 14' long, 1986 Mercury 20 hp. outboard motor, CMC power tilt & trim, 3 seats, hummingbird fish finder, bow mount trolling motor with foot controls, 1996 Shorelander trailer, single axle, 4.80-12 tires. Notes: Trailer only has registration, no title. Item Location: Fremont, NE 68025 Equipment Sold "AS IS, WHERE IS": All equipment/property is sold "AS IS, WHERE IS" with no warranty or guarantees, expressed or implied, No operational assessments have been made by DPA Auctions on this item, it has been photographed ONLY.



---

### #364 - 1970 Boss Boat 10 Yacht (KMK518)

Boss Boat 10 Yacht (KMK518), mid size open boat, 10' length, 5.0 hp. Mercury outboard, weighs approx. 200 lbs. + motor, stainless steel safety handles, lifting rings, 3 storage lockers, closed cell foam flotation, boat will float upright even if completely filled with water, 2005 homemade trailer, no tilt. Notes: NO TITLES. Registration ONLY. Item Location: Fremont, NE 68025 Equipment Sold "AS IS, WHERE IS": All equipment/property is sold "AS IS, WHERE IS" with no warranty or guarantees, expressed or implied, No operational assessments have been made by DPA Auctions on this item, it has been photographed ONLY.



---

### #365 - (10) Ten 20' 6 Bar Continuous Panels (AL328)

(10) Ten 20' 6 Bar Continuous Panels (AL328), 4' tall made from 1 1/4 round tubing, and 1/2" divider supports come with clips and connectors, in a bundle of ten. Notes: Item Location: West Point, NE 68788 Equipment Sold "AS IS, WHERE IS": All equipment/property is sold "AS IS, WHERE IS" with no warranty or guarantees, expressed or implied, No operational assessments have been made by DPA Auctions on this item, it has been photographed ONLY.



---

### #366 - Tires (TR4227)

Tires (TR4227) (2) Tires, on 10 bolt rims, 23.1-30 size. Notes: Item Location: Burr Oak, KS 66936 Equipment Sold "AS IS, WHERE IS": All equipment/property is sold "AS IS, WHERE IS" with no warranty or guarantees, expressed or implied, No operational assessments have been made by DPA Auctions on this item, it has been photographed ONLY.



---

### #367 - 1996 WW 31' Enclosed Trailer (DL249)

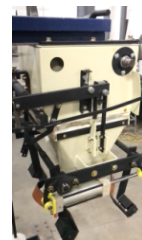
1996 WW 31' Enclosed Trailer (DL249), 5th wheel, tandem axle, side access doors, rear barn doors, e-track, GVWR - 12000-R, tire size 750x16, 2 years ago trailer was sandblasted and repainted with new roof, tires, brakes, break away controller, all new led lights inside and out, also has new seals around the windows. Notes: Has minor scratches but all around great trailer. Item Location: Springfield, MO 65802 Equipment Sold "AS IS, WHERE IS": All equipment/property is sold "AS IS, WHERE IS" with no warranty or guarantees, expressed or implied, No operational assessments have been made by DPA Auctions on this item, it has been photographed ONLY.



---

### #368 - Express Scale Model GBAO-31 Bagger (DL248)

Express Scale Model GBAO-31 Bagger (DL248), has been fully rebuilt, sand blasted and repainted back to new condition, re-calibrated and tested & ready to go. Notes: Seller can deliver and install with a fee. Fee negotiated between buyer and seller, not DPA Auctions. Item Location: Springfield, MO 65802 Equipment Sold "AS IS, WHERE IS": All equipment/property is sold "AS IS, WHERE IS" with no warranty or guarantees, expressed or implied, No operational assessments have been made by DPA Auctions on this item, it has been photographed ONLY.



---

### #369 - 1000 Gallon Nurse Tank (AL332)

1000 Gallon Nurse Tank (AL332), 5.5 hp Briggs and Stratton motor with Pacer pump, Includes 40' of 2" hose, engine and pump work good, heavy duty running gear and hubs with 11Lx15 tires, this running gear is set up to straddle 30" rows. Notes: Goes down the road 50 plus mph, always stored in the shed when not in use. Item Location: Tripoli, IA 50676 Equipment Sold "AS IS, WHERE IS": All equipment/property is sold "AS IS, WHERE IS" with no warranty or guarantees, expressed or implied, No operational assessments have been made by DPA Auctions on this item, it has been photographed ONLY.



---

### #370 - 1000 Gallon Nurse Tank (AL333)

1000 Gallon Nurse Tank (AL333), with 5.5 hp Briggs and Stratton motor with pacer pump, includes 40' of 2" hose, engine and pump work good, Westendorf running gear with 9.5x15 tires. Notes: Trails great, always stored in shed when not in use. Item Location: Tripoli, IA 50676 Equipment Sold "AS IS, WHERE IS": All equipment/property is sold "AS IS, WHERE IS" with no warranty or guarantees, expressed or implied, No operational assessments have been made by DPA Auctions on this item, it has been photographed ONLY.

