

## Auction catalog

|                    |  |
|--------------------|--|
| <b>Title</b>       | Online Auction - October 23, 2018 10AM Central   |
| <b>Description</b> | The following line of Fertilizer, Farm Implement, Truck, Trailer & Construction Equipment will be sold online with the bidding ending on October 23, 2018. Location of the equipment is given. Bidding within the last minute before the closing of a lot will extend the bidding time by an additional minute. Be prepared to bid accordingly. For more information, contact Del Peterson & Associates: 419 West Judy Drive Fremont NE, 68025 Phone: 800-492-9090 or 402-721-4388 Fax: 402-721-4583 E-mail: auction@delpeterson.com |
| <b>Date</b>        | Tue, Oct 23, 2018  |
| <b>Starts at</b>   | 10:00 AM   |
| <b>Address</b>     | PO Box 654, Fremont, NE 68026 USA  |
| <b>Categories</b>  |  |

### #1 - Tow Rope (DR0305)

Tow Rope (DR0305), 30' long 100,000 lb nylon tow rope, double clevis hooks. Notes: Item Location: Madelia, MN 56062 Equipment Sold "AS IS, WHERE IS": All equipment/property is sold "AS IS, WHERE IS" with no warranty or guarantees, expressed or implied, No operational assessments have been made by DPA Auctions on this item, it has been photographed ONLY.



### #2 - Tow Rope (DR0306)

Tow Rope (DR0306), 30' long 100,000 lb nylon tow rope, double clevis hooks. Notes: Item Location: Madelia, MN 56062 Equipment Sold "AS IS, WHERE IS": All equipment/property is sold "AS IS, WHERE IS" with no warranty or guarantees, expressed or implied, No operational assessments have been made by DPA Auctions on this item, it has been photographed ONLY.



### #3 - Hiniker Plow (DR0296)

Hiniker Plow (DR0296), hydraulic V plow, work light package, includes mounting bracket. Notes: Item Location: Madelia, MN 56062 Equipment Sold "AS IS, WHERE IS": All equipment/property is sold "AS IS, WHERE IS" with no warranty or guarantees, expressed or implied, No operational assessments have been made by DPA Auctions on this item, it has been photographed ONLY.



### #7 - Fenders (DR0308)

Fenders (DR0308), (3) stainless steel truck fenders, 6' long. Notes: Item Location: Madelia, MN 56062 Equipment Sold "AS IS, WHERE IS": All equipment/property is sold "AS IS, WHERE IS" with no warranty or guarantees, expressed or implied, No operational assessments have been made by DPA Auctions on this item, it has been photographed ONLY.



### #8 - Trips (DR0309)

Trips (DR0309), (4) heavy duty strip till trip shanks. Notes: Item Location: Madelia, MN 56062 Equipment Sold "AS IS, WHERE IS": All equipment/property is sold "AS IS, WHERE IS" with no warranty or guarantees, expressed or implied, No operational assessments have been made by DPA Auctions on this item, it has been photographed ONLY.



### #9 - Openers (DR0310)

Openers (DR0310), (18) Yetter no till openers and mounting brackets. Notes: Item Location: Madelia, MN 56062 Equipment Sold "AS IS, WHERE IS": All equipment/property is sold "AS IS, WHERE IS" with no warranty or guarantees, expressed or implied, No operational assessments have been made by DPA Auctions on this item, it has been photographed ONLY.



### #10 - Openers (DR0311)

Openers (DR0311), (18) Yetter no till openers and mounting brackets. Notes: Item Location: Madelia, MN 56062 Equipment Sold "AS IS, WHERE IS": All equipment/property is sold "AS IS, WHERE IS" with no warranty or guarantees, expressed or implied, No operational assessments have been made by DPA Auctions on this item, it has been photographed ONLY.



---

### #11 - Steel Braid Hose (DR0313)

Steel Braid Hose (DR0313), pallet lot of steel braided hose, 1/2" & 1". Notes: Item Location: Madelia, MN 56062 Equipment Sold "AS IS, WHERE IS": All equipment/property is sold "AS IS, WHERE IS" with no warranty or guarantees, expressed or implied, No operational assessments have been made by DPA Auctions on this item, it has been photographed ONLY.



---

### #12 - Axle (DR0316)

Axle (DR0316), 5 bolt axle, came off snowmobile trailer. Notes: Item Location: Madelia, MN 56062 Equipment Sold "AS IS, WHERE IS": All equipment/property is sold "AS IS, WHERE IS" with no warranty or guarantees, expressed or implied, No operational assessments have been made by DPA Auctions on this item, it has been photographed ONLY.



---

### #13 - Generac 25 KW Propane Generator (PZ0267)

Generac 25 KW Propane Generator (PZ0267), Generac model 00753-3 commercial grade propane generator, 1800 RPM, Fiat engine, block heater, liquid cooled, Amp automatic transfer switch, single phase 120/240V, 104 amps at 240V, weather proof enclosure, shows 390 hours. Notes: Item Location: Springfield, IL 62703 Equipment Sold "AS IS, WHERE IS": All equipment/property is sold "AS IS, WHERE IS" with no warranty or guarantees, expressed or implied, No operational assessments have been made by DPA Auctions on this item, it has been photographed ONLY.



---

### #14 - Generac 25 KW Propane Generator (PZ0268)

Generac 25 KW Propane Generator (PZ0268), Generac model 00753-3 commercial grade propane generator, 1800 RPM, Fiat engine, block heater, liquid cooled, Amp automatic transfer switch, single phase 120/240V, 104 amps at 240V, weather proof enclosure, shows 213 hours. Notes: Item Location: Springfield, IL 62703 Equipment Sold "AS IS, WHERE IS": All equipment/property is sold "AS IS, WHERE IS" with no warranty or guarantees, expressed or implied, No operational assessments have been made by DPA Auctions on this item, it has been photographed ONLY.



---

### #15 - 1996 Melroe Spra Coupe 3430 Sprayer (PZ0282)

1996 Melroe Spra Coupe 3430 Sprayer (PZ0282), diesel engine, 5 speed transmission, air conditioning, heat, Am/Fm radio, 300 gallon poly liquid system, 60' boom, foam marker, poly foam marker tank, Raven monitor, shows 2,721 hours. Notes: Item Location: Clinton, IL 61727 Equipment Sold "AS IS, WHERE IS": All equipment/property is sold "AS IS, WHERE IS" with no warranty or guarantees, expressed or implied, No operational assessments have been made by DPA Auctions on this item, it has been photographed ONLY.



---

### #16 - 1988 Ford F800 Flatbed Truck (PZ0283)

1988 Ford F800 Flatbed Truck (PZ0283), 6 Cylinder Turbo diesel engine, 5 speed transmission, 2 speed rear end, heat, Am/Fm cassette radio, single axle, steel flatbed, shows 35,324 miles. Notes: Item Location: Melvin, IL 60952 Equipment Sold "AS IS, WHERE IS": All equipment/property is sold "AS IS, WHERE IS" with no warranty or guarantees, expressed or implied, No operational assessments have been made by DPA Auctions on this item, it has been photographed ONLY.



---

### #17 - 2002 Ford F150 XLT Crew Cab Pickup (PZ9889, Unit 33443)

2002 Ford F150 XLT Crew Cab Pickup (PZ9889, Unit 33443), 4x4, Triton 5.4L gas engine, automatic transmission, air conditioning, heat, Am/Fm CD stereo, cruise control, power windows & locks, running boards, 265/75R16 tires. Notes: PLEASE ALLOW AT LEAST 60 DAYS FOR TITLE TRANSFER. Item Location: Independence, IA 50644 Equipment Sold "AS IS, WHERE IS": All equipment/property is sold "AS IS, WHERE IS" with no warranty or guarantees, expressed or implied, No operational assessments have been made by DPA Auctions on this item, it has been photographed ONLY.



---

### #18 - 2015 Gator Made Trailer (PZ0287)

2015 Gator Made Trailer (PZ0287), 2015 Gator Made trailer, tandem axle, 2 x 7,000 lb axles - 14,000 GVW, 2 5/16 adjustable ball hitch, heavy duty jack, 16' wood floor, 4' dove tail, spring loaded lift assist ramps, led lighting, 14 ply tires & spare. Notes: Item Location: Barry, IL 62312 Equipment Sold "AS IS, WHERE IS": All equipment/property is sold "AS IS, WHERE IS" with no warranty or guarantees, expressed or implied, No operational assessments have been made by DPA Auctions on this item, it has been photographed ONLY.



---

### #19 - 1999 Terra Gator 9103 Floater (PZ0285)

1999 Terra Gator 9103 Floater (PZ0285), Cat 3176 diesel engine, 18 speed transmission, air conditioning, heat, Am/Fm radio, shows 6516 hours, 70,009 miles. Notes: Item Location: Oakland, IL 61943 Equipment Sold "AS IS, WHERE IS": All equipment/property is sold "AS IS, WHERE IS" with no warranty or guarantees, expressed or implied, No operational assessments have been made by DPA Auctions on this item, it has been photographed ONLY.



---

### #20 - 2008 Chevrolet 2500 Extended Cab Pickup (PZ0284, Unit #42637)

2008 Chevrolet 2500 Extended Cab Pickup (PZ0284, Unit #42637), 4x4, gas engine, automatic transmission, air conditioning, heat, Am/Fm CD stereo, cruise control, power windows & locks, shows 193,382 miles. Notes: PLEASE ALLOW AT LEAST 60 DAYS FOR TITLE TRANSFER. Item Location: Oakland, IL 61943 Equipment Sold "AS IS, WHERE IS": All equipment/property is sold "AS IS, WHERE IS" with no warranty or guarantees, expressed or implied, No operational assessments have been made by DPA Auctions on this item, it has been photographed ONLY.



---

### #21 - Clark Forklift (NP7224)

Clark Forklift (NP7224), Model C500Y-S60, LP gas, shuttle shift, 5,500lb capacity, forks, tilt, 7.00-15 front tires, 6.50-10 rear tires, shows 2,708 hours. Notes: Item Location: Lyons, KS 67554 Equipment Sold "AS IS, WHERE IS": All equipment/property is sold "AS IS, WHERE IS" with no warranty or guarantees, expressed or implied, No operational assessments have been made by DPA Auctions on this item, it has been photographed ONLY.



---

### #22 - Hyster Challenger 50 Forklift (NP7232)

Hyster Challenger 50 Forklift (NP7232), gas, shuttle shift, 5,500lb capacity, forks, tilt, 7.50-15 front tires, 6.50-10 rear tires, shows 3,669 hours. Notes: Item Location: Moundridge, KS 67107 Equipment Sold "AS IS, WHERE IS": All equipment/property is sold "AS IS, WHERE IS" with no warranty or guarantees, expressed or implied, No operational assessments have been made by DPA Auctions on this item, it has been photographed ONLY.



---

### #23 - 1994 R&R Industries Overhead Liquid Tank (NP7229)

1994 R&R Industries Overhead Liquid Tank (NP7229), stainless steel, approx. 3,000 gallon capacity, cone bottom, secured manway access. Notes: Seller will assist with loading FREE OF CHARGE. Item Location: Trousdale, KS 67059 Equipment Sold "AS IS, WHERE IS": All equipment/property is sold "AS IS, WHERE IS" with no warranty or guarantees, expressed or implied, No operational assessments have been made by DPA Auctions on this item, it has been photographed ONLY.



---

### #24 - 1994 R&R Industries Overhead Liquid Tank (NP7230)

1994 R&R Industries Overhead Liquid Tank (NP7230), stainless steel, approx. 3,000 gallon capacity, cone bottom, secured manway access. Notes: Seller will assist with loading FREE OF CHARGE. Item Location: Trousdale, KS 67059 Equipment Sold "AS IS, WHERE IS": All equipment/property is sold "AS IS, WHERE IS" with no warranty or guarantees, expressed or implied, No operational assessments have been made by DPA Auctions on this item, it has been photographed ONLY.



---

### #25 - Case 921E Wheel Loader (TR6050)

Case 921E Wheel Loader (TR6050), diesel engine, shuttle shift transmission, AM/FM, Heat AC, bucket. Notes: Item Location: Milford, IN 46542 Equipment Sold "AS IS, WHERE IS": All equipment/property is sold "AS IS, WHERE IS" with no warranty or guarantees, expressed or implied, No operational assessments have been made by DPA Auctions on this item, it has been photographed ONLY.



---

### #26 - 1994 Chevy Kodiak (DR0280)

1994 Chevy Kodiak (DR0280), Cat diesel engine, Allison automatic transmission, New Leader L3020 dry spinner box, slatted chain, Raven 660 controller, GPS swathing, light bar, air brakes, rear pintle hitch, radar equipped, 48X31.00-20 rear tires, 42X25.00-20 front tires, shows 159,250 miles, 15,516 hours. Notes: Super clean floater. Item Location: Sac City, IA 50583 Equipment Sold "AS IS, WHERE IS": All equipment/property is sold "AS IS, WHERE IS" with no warranty or guarantees, expressed or implied, No operational assessments have been made by DPA Auctions on this item, it has been photographed ONLY.



---

### #27 - Semi Float Tires (DR0281)

Semi Float Tires (DR0281), 1 is 48X31.00-20, 1 is 42X25.00-20, both are mounted on rims. Notes: Item Location: Sac City, IA 50583 Equipment Sold "AS IS, WHERE IS": All equipment/property is sold "AS IS, WHERE IS" with no warranty or guarantees, expressed or implied, No operational assessments have been made by DPA Auctions on this item, it has been photographed ONLY.



---

### #28 - 2011 Case IH 4020 (DR0331 Unit 25535)

2011 Case IH 4020 (DR0331 Unit 25535), diesel engine, Allison automatic transmission, New Leader L4000 G4 hydraulic stainless steel dry spinner box, HAS Multiplier insert, side extensions, belt/chain, roll over tarp, Raven Viper Pro controller, AM/FM radio, cab heat/air conditioning, 1000/50R25 rear tires, 750/50R26 front tires, shows 4412 hours. Notes: NEW rear end @ 3550 hours, NEW turbo 2017. Front window is cracked. Air dryer is noisy and may need replaced. Item Location: South Sioux City, NE 68776 Equipment Sold "AS IS, WHERE IS": All equipment/property is sold "AS IS, WHERE IS" with no warranty or guarantees, expressed or implied, No operational assessments have been made by DPA Auctions on this item, it has been photographed ONLY.



---

### #29 - Nh3 Nurse Tank (DR0293)

Nh3 Nurse Tank (DR0293), 1450 gallon Nh3 nurse tank, top front fill, NO data tag, 5th wheel style running gear, adjustable axles, 14L.16.1 tires. Notes: Item Location: Madelia, MN 56062 Equipment Sold "AS IS, WHERE IS": All equipment/property is sold "AS IS, WHERE IS" with no warranty or guarantees, expressed or implied, No operational assessments have been made by DPA Auctions on this item, it has been photographed ONLY.



---

### #30 - Nh3 Nurse Tank (DR0294)

Nh3 Nurse Tank (DR0294), 1450 gallon Nh3 nurse tank, top front fill, data tag, 5th wheel style running gear, 14L.16.1 tires. Notes: Item Location: Madelia, MN 56062 Equipment Sold "AS IS, WHERE IS": All equipment/property is sold "AS IS, WHERE IS" with no warranty or guarantees, expressed or implied, No operational assessments have been made by DPA Auctions on this item, it has been photographed ONLY.



---

### #31 - Dry Spreader (DR0295)

Dry Spreader (DR0295), 3 ton dry fertilizer spreader, side extensions, gas engine, dual rear spinners, ground drive web chain, top flip tarp, tandem axle gear, 11L-15 tires. Notes: Item Location: Madelia, MN 56062 Equipment Sold "AS IS, WHERE IS": All equipment/property is sold "AS IS, WHERE IS" with no warranty or guarantees, expressed or implied, No operational assessments have been made by DPA Auctions on this item, it has been photographed ONLY.



---

### #32 - MD Sweep Auger (DR0307)

MD Sweep Auger (DR0307), power sweep auger, 12" X 35' power sweep auger, 15hp electric motor. Notes: Item Location: Madelia, MN 56062 Equipment Sold "AS IS, WHERE IS": All equipment/property is sold "AS IS, WHERE IS" with no warranty or guarantees, expressed or implied, No operational assessments have been made by DPA Auctions on this item, it has been photographed ONLY.



---

### #33 - FriesenTank (DR0289)

FriesenTank (DR0289), 3000 gallon stainless steel dish bottom tank, 10 degree, 2" bung, welded on legs, 8' tall, 8' diameter, total height is 10'. Notes: Item Location: Madelia, MN 56062 Equipment Sold "AS IS, WHERE IS": All equipment/property is sold "AS IS, WHERE IS" with no warranty or guarantees, expressed or implied, No operational assessments have been made by DPA Auctions on this item, it has been photographed ONLY.



---

### #34 - 2007 Case IH 3520 (DR0333 Unit 0474)

2007 Case IH 3520 (DR0333 Unit 0474), diesel engine, Allison automatic transmission, New Leader 3020 G4 hydraulic stainless steel dry spinner bed, belt/chain, Raven Viper Pro controller, EZ Guide 250 swathing, cab heat/air conditioning, 1050/50R32 tires, rear tires are NEW, shows 4414 hours. Notes: Item Location: Cobb, WI 53526 Equipment Sold "AS IS, WHERE IS": All equipment/property is sold "AS IS, WHERE IS" with no warranty or guarantees, expressed or implied, No operational assessments have been made by DPA Auctions on this item, it has been photographed ONLY.



---

### #35 - Liquid Pump (DR0300)

Liquid Pump (DR0300), 3" cast liquid pump, 7.5hp electric motor, not sure of working condition. Notes: Item Location: Madelia, MN 56062 Equipment Sold "AS IS, WHERE IS": All equipment/property is sold "AS IS, WHERE IS" with no warranty or guarantees, expressed or implied, No operational assessments have been made by DPA Auctions on this item, it has been photographed ONLY.



---

### #36 - Boom Tips (DR0301)

Boom Tips (DR0301), (2) outer boom tips 15', came off a 2007 Rogator w/90' boom. Notes: Item Location: Madelia, MN 56062 Equipment Sold "AS IS, WHERE IS": All equipment/property is sold "AS IS, WHERE IS" with no warranty or guarantees, expressed or implied, No operational assessments have been made by DPA Auctions on this item, it has been photographed ONLY.



---

### #37 - Flow Meter (DR0312)

Flow Meter (DR0312), mass flow meter, with controls. Notes: Item Location: Madelia, MN 56062 Equipment Sold "AS IS, WHERE IS": All equipment/property is sold "AS IS, WHERE IS" with no warranty or guarantees, expressed or implied, No operational assessments have been made by DPA Auctions on this item, it has been photographed ONLY.





---

### #38 - Liquid Tank (DR0318)

Liquid Tank (DR0318), 350 gallon poly liquid tank. Notes: Item Location: Madelia, MN 56062 Equipment Sold "AS IS, WHERE IS": All equipment/property is sold "AS IS, WHERE IS" with no warranty or guarantees, expressed or implied, No operational assessments have been made by DPA Auctions on this item, it has been photographed ONLY.



---

### #39 - 2007 RoGator SS1074 (DR0303 Unit 4021186)

2007 RoGator SS1074 (DR0303 Unit 4021186), diesel engine, hydrostatic drive, 1100 gallon stainless steel liquid system, 90' boom. Raven Viper Pro controller, Raven Smart Trax, Norac auto boom height, 3 way nozzle bodies, foam markers, stainless steel foam tank, dual injection tanks, saddle mount poly rinse tank, AM/FM CD radio, cab heat/air conditioning, rear view camera, (tires on machine SELL SEPERATELY machine sells w/46" row crop tires), shows 3895 hours. Notes: Float tires on machine DO NOT SELL WITH THIS MACHINE. Machine sells with 46" row crop tires. Item Location: Madelia, MN 56062 Equipment Sold "AS IS, WHERE IS": All equipment/property is sold "AS IS, WHERE IS" with no warranty or guarantees, expressed or implied, No operational assessments have been made by DPA Auctions on this item, it has been photographed ONLY.



---

### #41 - Stainless Steel Tank (DR0319)

Stainless Steel Tank (DR0319), 2400 gallon upright stainless steel liquid tank, on legs, dish bottom. Notes: Item Location: Madelia, MN 56062 Equipment Sold "AS IS, WHERE IS": All equipment/property is sold "AS IS, WHERE IS" with no warranty or guarantees, expressed or implied, No operational assessments have been made by DPA Auctions on this item, it has been photographed ONLY.



---

### #42 - Stainless Steel Tank (DR03120)

Stainless Steel Tank (DR03120), 2900 gallon upright stainless steel liquid tank, on legs, dish bottom. Notes: Item Location: Madelia, MN 56062 Equipment Sold "AS IS, WHERE IS": All equipment/property is sold "AS IS, WHERE IS" with no warranty or guarantees, expressed or implied, No operational assessments have been made by DPA Auctions on this item, it has been photographed ONLY.



---

### #43 - Seed Hopper (DR0314)

Seed Hopper (DR0314), John Deere seed hopper. Notes: Item Location: Madelia, MN 56062 Equipment Sold "AS IS, WHERE IS": All equipment/property is sold "AS IS, WHERE IS" with no warranty or guarantees, expressed or implied, No operational assessments have been made by DPA Auctions on this item, it has been photographed ONLY.



---

### #44 - (4) Michelin/Titan Flotation Tires/Rims (NP7267)

(4) Michelin/Titan Flotation Tires/Rims (NP7267), (3) Michelin XM28 tires, 70-75% tread, (1) Titan AG49M tire, 95% tread (NEW last season), size 620/70R46 tires, 12 bolt rim pattern. Notes: Can be used on a John Deere 4920/30/40 or R4045, tires can be used on multiple machines. Item Location: Fort Dodge, IA 50501 Equipment Sold "AS IS, WHERE IS": All equipment/property is sold "AS IS, WHERE IS" with no warranty or guarantees, expressed or implied, No operational assessments have been made by DPA Auctions on this item, it has been photographed ONLY.



---

### #45 - 2012 RoGator RG1100 (DR3334)

2012 RoGator RG1100 (DR3334), diesel engine, hydrostatic drive, 1100 gallon stainless steel liquid system, 100' boom, 5 way nozzle bodies, Raven Viper Pro controller, front load, poly chemical inductor, saddle mount poly rinse tank, AM/FM CD radio, cab heat/air conditioning, shows 3427 hours. Notes: This machine has float tires selling separately on this auction. Item Location: Richmond, IL 60071 Equipment Sold "AS IS, WHERE IS": All equipment/property is sold "AS IS, WHERE IS" with no warranty or guarantees, expressed or implied, No operational assessments have been made by DPA Auctions on this item, it has been photographed ONLY.



---

### #46 - 2004 Pontiac Vibe (DR0324 Unit 21095985)

2004 Pontiac Vibe (DR0324 Unit 21095985), 1.8 liter gas engine, automatic transmission, 4 door, rear hatch back, AM/FM radio, sun roof, air conditioning, cruise control, power windows & locks, 205/55R16 tires, show 128,138 miles. Notes: Item Location: Madelia, MN 56062 Equipment Sold "AS IS, WHERE IS": All equipment/property is sold "AS IS, WHERE IS" with no warranty or guarantees, expressed or implied, No operational assessments have been made by DPA Auctions on this item, it has been photographed ONLY.



---

### #47 - 1955 Flint Steel (DR0321)

1955 Flint Steel (DR0321), 30,000 gallon mild steel Nh3 storage tank, on concrete saddles, data tag, magnetic float gauge, top access ladder, Corken pump & motor. Notes: This tank must be removed by Feb 1, 2019. Any dismantle work, transportation and/or crane service is the responsibility and expense of the buyer. Item Location: Lake Crystal, MN 56055 Equipment Sold "AS IS, WHERE IS": All equipment/property is sold "AS IS, WHERE IS" with no warranty or guarantees, expressed or implied, No operational assessments have been made by DPA Auctions on this item, it has been photographed ONLY.



---

### #48 - 2013 Polaris Ranger Limited Edition Crew UTV (NP7270)

2013 Polaris Ranger Limited Edition Crew UTV (NP7270), 4x4, 800 efi, EPS power steering, 4 seater, mesh doors, full roof, partial windshield, rear cargo bed, snow blade w/ blade control on shifter and blade bracket, shows 533 miles. Notes: Bought new, 1 owner, always shedded. Cutting edge on blade needs a little repair. Item Location: Fremont, NE 68025 Equipment Sold "AS IS, WHERE IS": All equipment/property is sold "AS IS, WHERE IS" with no warranty or guarantees, expressed or implied, No operational assessments have been made by DPA Auctions on this item, it has been photographed ONLY.



---

### #49 - Chandler Dry Tender Box (PZ0279)

Chandler Dry Tender Box (PZ0279), Chandler 16 ton 304 stainless steel dry tender box, side discharge auger, all hydraulic, 2 stage pump, roll over tarp. Notes: NO PTO. Running gear NOT included. Item Location: Melvin, IL 60952 Equipment Sold "AS IS, WHERE IS": All equipment/property is sold "AS IS, WHERE IS" with no warranty or guarantees, expressed or implied, No operational assessments have been made by DPA Auctions on this item, it has been photographed ONLY.



---

### #50 - Chandler Dry Tender box (PZ0280)

Chandler Dry Tender box (PZ0280), Chandler 16 ton 304 stainless steel dry tender box, side discharge auger, all hydraulic, 2 stage pump, roll over tarp. Notes: NO PTO. Running gear NOT included. Item Location: Melvin, IL 60952 Equipment Sold "AS IS, WHERE IS": All equipment/property is sold "AS IS, WHERE IS" with no warranty or guarantees, expressed or implied, No operational assessments have been made by DPA Auctions on this item, it has been photographed ONLY.



---

### #51 - 2008 John Deere 7430 Premium MFWD Tractor (PZ0263)

2008 John Deere 7430 Premium MFWD Tractor (PZ0263), John Deere diesel engine, Power Quad transmission, air conditioning, heat, Am/Fm radio, Joystick, rear window defrost, 3 port hydraulics, PTO, 3-point, John Deere 741 loader 9' bucket (S/N W00741D016294), Firestone 380/85R30 front tires, Firestone 480/80R42 rear tires, shows 5505 hours. Notes: There will be more hours on the tractor by sale time. Item Location: Walnut, IA 51577 Equipment Sold "AS IS, WHERE IS": All equipment/property is sold "AS IS, WHERE IS" with no warranty or guarantees, expressed or implied, No operational assessments have been made by DPA Auctions on this item, it has been photographed ONLY.



---

### #52 - 2013 Trail Master (DR0288 Unit 4020754)

2013 Trail Master (DR0288 Unit 4020754), 26' gooseneck trailer, tandem dual wheeled axle, (TANK IS NOT INCLUDED), plus 5' beaver tail, rear fold down ramps, wood deck, 235/80R16 tires. Notes: Tank on trailer SELLS SEPERATELY. Item Location: Madelia, MN 56062 Equipment Sold "AS IS, WHERE IS": All equipment/property is sold "AS IS, WHERE IS" with no warranty or guarantees, expressed or implied, No operational assessments have been made by DPA Auctions on this item, it has been photographed ONLY.



---

### #53 - 2003 Rayman Dry Trailer (DR0315 Unit 4020251)

2003 Rayman Dry Trailer (DR0315 Unit 4020251), 5 compartment stainless steel hydraulic dry fertilizer trailer, front micro ingredient compartment, separate unloading auger, overhead unloading auger, electric roll tarp, tandem axle trailer, 22.5 tires. Notes: Item Location: Madelia, MN 56062 Equipment Sold "AS IS, WHERE IS": All equipment/property is sold "AS IS, WHERE IS" with no warranty or guarantees, expressed or implied, No operational assessments have been made by DPA Auctions on this item, it has been photographed ONLY.



---

### #54 - 2001 Chevy 1500 (DR0290 Unit 4022876)

2001 Chevy 1500 (DR0290 Unit 4022876), 5.3 liter gas engine, automatic transmission, 4X4, quad cab, rear Tommy Gate tailgate, AM/FM cassette radio, cruise control, power windows & locks, receiver hitch, 265/75R16 tires, shows 231,431 miles. Notes: Item Location: Madelia, MN 56062 Equipment Sold "AS IS, WHERE IS": All equipment/property is sold "AS IS, WHERE IS" with no warranty or guarantees, expressed or implied, No operational assessments have been made by DPA Auctions on this item, it has been photographed ONLY.



---

### #55 - 2012 John Deere 1990 CCS Air Seeder (NP7268)

2012 John Deere 1990 CCS Air Seeder (NP7268), 36', 7.5" spacing, hydraulic wings, Seed Star monitor, all runs blockage, half width shut-off, John Deere section control ready, scale kit, in cab rate adjust control, approx. 6,532 acres through it. Notes: Always shedded. Item Location: Seneca, KS 66538 Equipment Sold "AS IS, WHERE IS": All equipment/property is sold "AS IS, WHERE IS" with no warranty or guarantees, expressed or implied, No operational assessments have been made by DPA Auctions on this item, it has been photographed ONLY.



---

### #56 - 2010 John Deere 4930 Combo (DR0335 Unit 26004)

2010 John Deere 4930 Combo (DR0335 Unit 26004), John Deere diesel engine, hydrostatic drive, New Leader L3030 G4 hydraulic stainless steel dry spinner box, Multiplier insert, 1200 gallon stainless steel liquid system, 120' boom, 5 way nozzle bodies, 20" centers, John Deere Green Star controller, StarFire iTC reciever, rear view camera, AM/FM CD radio, cab hat/air conditioning, 380/105R50 row crop tires, 710/65R46 flotation tires, shows 5114 hours. Notes: This all sells as complete combo unit. Item Location: Janesville, WI 53546 Equipment Sold "AS IS, WHERE IS": All equipment/property is sold "AS IS, WHERE IS" with no warranty or guarantees, expressed or implied, No operational assessments have been made by DPA Auctions on this item, it has been photographed ONLY.



---

### #58 - 2005 Chevy 1500 (DR0291 Unit 4022412)

2005 Chevy 1500 (DR0291 Unit 4022412), 5.3 liter gas engine, automatic transmission, 4X4, quad cab, AM/FM CD radio, cruise control, power windows & locks, bed liner & bed cover, receiver hitch, 265/70R16 tires, shows 219,059 miles. Notes: Item Location: Madelia, MN 56062 Equipment Sold "AS IS, WHERE IS": All equipment/property is sold "AS IS, WHERE IS" with no warranty or guarantees, expressed or implied, No operational assessments have been made by DPA Auctions on this item, it has been photographed ONLY.



---

### #59 - Scale House (DR0333)

Scale House (DR0333), approximately 16' X 12', 13' tall at the peak, vinyl sided scale house building, asphalt shingles, inside is finished, based board heat. Notes: This building needs to be removed by February 1, 2019. Any dismantle, transportation or lability is the responsibility of the buyer. Item Location: Lake Crystal, MN 56055 Equipment Sold "AS IS, WHERE IS": All equipment/property is sold "AS IS, WHERE IS" with no warranty or guarantees, expressed or implied, No operational assessments have been made by DPA Auctions on this item, it has been photographed ONLY.



---

### #60 - Komatsu Forklift (DR0330)

Komatsu Forklift (DR0330), LP gas engine, shuttle shift, 3000 LB capacity, 2 stage mast, 54" forks, pnumatic tires, shows 1485 hours. Notes: Item Location: Lakefield, MN 56150 Equipment Sold "AS IS, WHERE IS": All equipment/property is sold "AS IS, WHERE IS" with no warranty or guarantees, expressed or implied, No operational assessments have been made by DPA Auctions on this item, it has been photographed ONLY.



---

### #61 - Liquid Nurse Tank (DR0326)

Liquid Nurse Tank (DR0326), 750 gallon poly tank, front & rear outlets, tandem axle gear, 7.00-15 tires. Notes: Item Location: Lakefield, MN 56150 Equipment Sold "AS IS, WHERE IS": All equipment/property is sold "AS IS, WHERE IS" with no warranty or guarantees, expressed or implied, No operational assessments have been made by DPA Auctions on this item, it has been photographed ONLY.



---

### #62 - Liquid Nurse Trailer (DR0327)

Liquid Nurse Trailer (DR0327), 1500 gallon fiberglass tank, tandem axle gear 16.5L-16.1 tires. Notes: Item Location: Lakefield, MN 56150 Equipment Sold "AS IS, WHERE IS": All equipment/property is sold "AS IS, WHERE IS" with no warranty or guarantees, expressed or implied, No operational assessments have been made by DPA Auctions on this item, it has been photographed ONLY.



---

### #63 - Liquid Nurse Trailer (DR0328)

Liquid Nurse Trailer (DR0328), 1600 gallon poly tank, poly chemicla inductor, gas engine, 2" Banjo pump, fender side racks, tandem axle gear, 16.5L-16.1 tires. Notes: Item Location: Lakefield, MN 56150 Equipment Sold "AS IS, WHERE IS": All equipment/property is sold "AS IS, WHERE IS" with no warranty or guarantees, expressed or implied, No operational assessments have been made by DPA Auctions on this item, it has been photographed ONLY.



### #64 - 2015 Rogator RG1300B Sprayer (TR4730)

2015 Rogator RG1300B Sprayer (TR4730), diesel engine, hydrostatic transmission, gator trax 4 wheel package, deluxe seat, air ride cab, 1,300 gallon stainless steel liquid system, 100' 5 section boom, auto steer, standard pump, auto tracking for wheel spacing, slingshot ready, front reload valve, Raven monitor, Viper Pro console, shows 710 hours. Notes: Item Location: Blue Hill, NE 68930 Equipment Sold "AS IS, WHERE IS": All equipment/property is sold "AS IS, WHERE IS" with no warranty or guarantees, expressed or implied, No operational assessments have been made by DPA Auctions on this item, it has been photographed ONLY.



### #65 - Flotation Tires (DR0304)

Flotation Tires (DR0304), (4) 24.5R-32 sprayer flotation tires, came off RoGator 1074SS, mounted on rims. Notes: Item Location: Madelia, MN 56062 Equipment Sold "AS IS, WHERE IS": All equipment/property is sold "AS IS, WHERE IS" with no warranty or guarantees, expressed or implied, No operational assessments have been made by DPA Auctions on this item, it has been photographed ONLY.



### #66 - Sprayer Floats (DR 437)

Sprayer Floats (DR 437), (4) 650/65R38 float tires and rims, came off 2012 RoGator RG1100 from this auction. Notes: Item Location: Richmond, IL 60071 Equipment Sold "AS IS, WHERE IS": All equipment/property is sold "AS IS, WHERE IS" with no warranty or guarantees, expressed or implied, No operational assessments have been made by DPA Auctions on this item, it has been photographed ONLY.



### #68 - 1998 Freightliner FL70 (DR0340 Unit 22559)

1998 Freightliner FL70 (DR0340 Unit 22559), Cat diesel engine, 10 speed transmission, tandem axle full screw, air brakes, Sudenga model A35, 6 compartment 18 ton hydraulic aluminum feed body, overhead auger, hard top lids, cruise control, 22.5 tires. Notes: Item Location: Marshfield, WI 54449 Equipment Sold "AS IS, WHERE IS": All equipment/property is sold "AS IS, WHERE IS" with no warranty or guarantees, expressed or implied, No operational assessments have been made by DPA Auctions on this item, it has been photographed ONLY.



### #69 - DMI 5300 (DR0343)

DMI 5300 (DR0343), 17 knife pull type tool bar, Dickey-john cold flow, Dickey-john controller, front coulters, double disc rear sealers, walking tandem axles & gauge wheels, hydraulic gauge wheels. Notes: Item Location: Markesan, WI 53946 Equipment Sold "AS IS, WHERE IS": All equipment/property is sold "AS IS, WHERE IS" with no warranty or guarantees, expressed or implied, No operational assessments have been made by DPA Auctions on this item, it has been photographed ONLY.



### #70 - DMI 4100 (DR0344 Unit 24)

DMI 4100 (DR0344 Unit 24), 13 knife pull type tool bar, Dickey-john cold flow, Dickey-john controller, front coulters, hydraulic wings & gauge wheels. Notes: Item Location: Markesan, WI 53946 Equipment Sold "AS IS, WHERE IS": All equipment/property is sold "AS IS, WHERE IS" with no warranty or guarantees, expressed or implied, No operational assessments have been made by DPA Auctions on this item, it has been photographed ONLY.



### #71 - 2013 John Deere 5085E (DR0292 Unit 4020701)

2013 John Deere 5085E (DR0292 Unit 4020701), MFWD, diesel engine, 2 stick w/shuttle shift, rear PTO, 3 point hitch, dual hydraulic outlets, tinted glass, LED lights, equipped with joystick loader controls, AM/FM radio, cab hat/air conditioning, 18.4-30 rear tires, 12.4-24 front tires, shows 1554 hours. Notes: Item Location: Madelia, MN 56062 Equipment Sold "AS IS, WHERE IS": All equipment/property is sold "AS IS, WHERE IS" with no warranty or guarantees, expressed or implied, No operational assessments have been made by DPA Auctions on this item, it has been photographed ONLY.



### #72 - 1965 Trinity (DR0322)

1965 Trinity (DR0322), 26,000 gallon mild steel Nh3 storage tank, on concrete saddles, data tag, magnetic float gauge, pump & motor. Notes: This tank must be removed by Feb 1, 2019. Any dismantle work, transportation and/or crane service is the responsibility and expense of the buyer. Item Location: Lake Crystal, MN 56055 Equipment Sold "AS IS, WHERE IS": All equipment/property is sold "AS IS, WHERE IS" with no warranty or guarantees, expressed or implied, No operational assessments have been made by DPA Auctions on this item, it has been photographed ONLY.



### #73 - Running Gear (DR0282)

Running Gear (DR0282), bolster style steerable running gear, 11L-15 tires. Notes: Item Location: Jackson, MN 56055 Equipment Sold "AS IS, WHERE IS": All equipment/property is sold "AS IS, WHERE IS" with no warranty or guarantees, expressed or implied, No operational assessments have been made by DPA Auctions on this item, it has been photographed ONLY.





---

### #74 - Running Gear (DR0283)

Running Gear (DR0283), 5th wheel style steerable running gear, 11L-15 tires. Notes: Item Location: Jackson, MN 56055 Equipment Sold "AS IS, WHERE IS": All equipment/property is sold "AS IS, WHERE IS" with no warranty or guarantees, expressed or implied, No operational assessments have been made by DPA Auctions on this item, it has been photographed ONLY.



---

### #75 - Running Gear (DR0284)

Running Gear (DR0284), bolster style steerable running gear, steel plate bed, 15" tires. Notes: One tire is flat. Item Location: Jackson, MN 56055 Equipment Sold "AS IS, WHERE IS": All equipment/property is sold "AS IS, WHERE IS" with no warranty or guarantees, expressed or implied, No operational assessments have been made by DPA Auctions on this item, it has been photographed ONLY.



---

### #76 - Running Gear (DR0285)

Running Gear (DR0285), bolster style steerable running gear, 12.5L-15 tires. Notes: Item Location: Jackson, MN 56055 Equipment Sold "AS IS, WHERE IS": All equipment/property is sold "AS IS, WHERE IS" with no warranty or guarantees, expressed or implied, No operational assessments have been made by DPA Auctions on this item, it has been photographed ONLY.



---

### #77 - 2007 Case IH 4420 (DR0342 Unit 34690)

2007 Case IH 4420 (DR0342 Unit 34690), diesel engine, hydraulic drive, 1200 gallon stainless steel liquid system, 90' boom, foam markers, AIM Command, Raven Viper Pro controller, stainless steel chemical inductor, AM/FM CD radio, cab heat/air conditioning, shows 4071 hours. Notes: Item Location: Marshfield, WI 54449 Equipment Sold "AS IS, WHERE IS": All equipment/property is sold "AS IS, WHERE IS" with no warranty or guarantees, expressed or implied, No operational assessments have been made by DPA Auctions on this item, it has been photographed ONLY.



---

### #78 - 2011 Hagie STS12 (DR0353)

2011 Hagie STS12 (DR0353), Cummins diesel engine, hydrostatic drive, 1200 gallon stainless steel liquid system, 90' boom, foam markers, stainless steel foam tank, poly rinse tank, Raven Viper Pro controller, Capstan system, cab heat/air conditioning, AM/FM CD radio, shows 3846 hours, 380/90R46 row crop tires. Notes: Float tires for this machine sell separately on this auction. Item Location: Mazomanie, WI 53560 Equipment Sold "AS IS, WHERE IS": All equipment/property is sold "AS IS, WHERE IS" with no warranty or guarantees, expressed or implied, No operational assessments have been made by DPA Auctions on this item, it has been photographed ONLY.



---

### #79 - DMI 4100 (DR0345 Unit 21)

DMI 4100 (DR0345 Unit 21), 13 knife pull type tool bar, Dickey-john cold flow, Dickey-john controller, front coulter, hydraulic wings & gauge wheels. Notes: Item Location: Markesan, WI 53946 Equipment Sold "AS IS, WHERE IS": All equipment/property is sold "AS IS, WHERE IS" with no warranty or guarantees, expressed or implied, No operational assessments have been made by DPA Auctions on this item, it has been photographed ONLY.



---

### #80 - Blu-jet Tool Bar (DR0346 Unit 3)

Blu-jet Tool Bar (DR0346 Unit 3), 13 knife pull type tool bar, Continental flow meter, hydraulic wings, manual gauge wheels, front coulter. Notes: Item Location: Markesan, WI 53946 Equipment Sold "AS IS, WHERE IS": All equipment/property is sold "AS IS, WHERE IS" with no warranty or guarantees, expressed or implied, No operational assessments have been made by DPA Auctions on this item, it has been photographed ONLY.



---

### #81 - 1969 Beaird Nh3 Tank (DR0347)

1969 Beaird Nh3 Tank (DR0347), 18,000 gallon Nh3 storage tank, on steel stands & skids, Corken pump w/electric motor, magnetic float gauge, data plate. Notes: Item Location: Markesan, WI 53946 Equipment Sold "AS IS, WHERE IS": All equipment/property is sold "AS IS, WHERE IS" with no warranty or guarantees, expressed or implied, No operational assessments have been made by DPA Auctions on this item, it has been photographed ONLY.



---

### #82 - 1998 Ford F-250 Pickup (TR6056)

1998 Ford F-250 Pickup (TR6056), V8 4.6L gas engine, automatic transmission, heat, air conditioning, Am/Fm radio, cruise control, 255/70R16 tires, shows 152,444 miles. Notes: Item Location: Fremont, NE 68025 Equipment Sold "AS IS, WHERE IS": All equipment/property is sold "AS IS, WHERE IS" with no warranty or guarantees, expressed or implied, No operational assessments have been made by DPA Auctions on this item, it has been photographed ONLY.



---

### #83 - Ditch Withe (DR0287)

Ditch Withe (DR0287), model 1020H trencher, gas engine, self propelled walk behind. Notes: Item Location: Jackson, MN 56055 Equipment Sold "AS IS, WHERE IS": All equipment/property is sold "AS IS, WHERE IS" with no warranty or guarantees, expressed or implied, No operational assessments have been made by DPA Auctions on this item, it has been photographed ONLY.



---

### #84 - Liquid Nurse Trailer (DR0329)

Liquid Nurse Trailer (DR0329), 1000 gallon stainless steel tank, shuttle rack, tandem axle gear 21.5L-16.1 tires. Notes: Item Location: Lakefield, MN 56150 Equipment Sold "AS IS, WHERE IS": All equipment/property is sold "AS IS, WHERE IS" with no warranty or guarantees, expressed or implied, No operational assessments have been made by DPA Auctions on this item, it has been photographed ONLY.



---

### #85 - Toledo Scale (DR0325)

Toledo Scale (DR0325), platform scale on castered cart. Notes: Item Location: Lakefield, MN 56150 Equipment Sold "AS IS, WHERE IS": All equipment/property is sold "AS IS, WHERE IS" with no warranty or guarantees, expressed or implied, No operational assessments have been made by DPA Auctions on this item, it has been photographed ONLY.



---

### #86 - Hiniker Cooler (DR0279)

Hiniker Cooler (DR0279), Nh3 cooler for tool bar. Notes: Item Location: Augusta, IL 62311 Equipment Sold "AS IS, WHERE IS": All equipment/property is sold "AS IS, WHERE IS" with no warranty or guarantees, expressed or implied, No operational assessments have been made by DPA Auctions on this item, it has been photographed ONLY.



---

### #87 - 2009 Case IH 4420 (DR0228 Unit 7022708)

2009 Case IH 4420 (DR0228 Unit 7022708), diesel engine, hydrostatic drive, 1200 gallon stainless steel liquid system, 90' boom, 5 way nozzle bodies, Raven Viper Pro controller, Trimble auto steer, Norac auto boom height control, poly rinse tank, LED boom work lights, rear view camera, 320/90R54 row crop tires, shows 3616 hours. Notes: Certificate of Origin only, Item Location: Waldorf, MN 56091 Equipment Sold "AS IS, WHERE IS": All equipment/property is sold "AS IS, WHERE IS" with no warranty or guarantees, expressed or implied, No operational assessments have been made by DPA Auctions on this item, it has been photographed ONLY.



---

### #88 - Raven Viper Pro Monitors (NP7240)

Raven Viper Pro Monitors (NP7240), (2) Raven Viper Pro monitors, one puck, all work fine. Notes: Item Location: Fairfax, MO 64446 Equipment Sold "AS IS, WHERE IS": All equipment/property is sold "AS IS, WHERE IS" with no warranty or guarantees, expressed or implied, No operational assessments have been made by DPA Auctions on this item, it has been photographed ONLY.



---

### #89 - 1999 Kenworth W903L2 Truck (PZ0399)

1999 Kenworth W903L2 Truck (PZ0399), Cummins Redtop N-14 Plus diesel engine, 13 speed transmission, air conditioning, heat, Am/Fm radio, cruise control, engine brake, owner/operator specs, Aero sleeper, tandem axle, full screw, air ride suspension, dual fuel tanks, dual air breathers, air slide 5th wheel, 265" wheel base, 295/75R22.5 tires, aluminum rims, shows 1,640,936 miles. Notes: Item Location: Lincoln, NE 68517 Equipment Sold "AS IS, WHERE IS": All equipment/property is sold "AS IS, WHERE IS" with no warranty or guarantees, expressed or implied, No operational assessments have been made by DPA Auctions on this item, it has been photographed ONLY.



---

### #90 - 2002 RoGator 1254C (DR0351)

2002 RoGator 1254C (DR0351), diesel engine, hydrostatic drive, New Leader L20/20 G4 hydraulic stainless steel dry spinner box, belt bottom, roll tarp, Raven 661 controller, Raven swathing, AM/FM cassette radio, cab heat/air conditioning, 380/90R46 row crop tires, near new, shows 2632 hours, 21,495 miles. Notes: Item Location: Waupun, WI 53963 Equipment Sold "AS IS, WHERE IS": All equipment/property is sold "AS IS, WHERE IS" with no warranty or guarantees, expressed or implied, No operational assessments have been made by DPA Auctions on this item, it has been photographed ONLY.



---

### #91 - 1969 Flint Steel Nh3 Tank (DR0348)

1969 Flint Steel Nh3 Tank (DR0348), 12,000 gallon Nh3 storage tank, on steel saddles, magnetic float gauge, good data tag, National Board #54107, dual loadouts. Notes: This is tank & valve ONLY. Item Location: Markesan, WI 53946 Equipment Sold "AS IS, WHERE IS": All equipment/property is sold "AS IS, WHERE IS" with no warranty or guarantees, expressed or implied, No operational assessments have been made by DPA Auctions on this item, it has been photographed ONLY.



---

### #92 - Running Gear (DR0338)

Running Gear (DR0338), 5th wheel style running gear, 12.5L-15 tires, 6 bolt hubs. Notes: Item Location: Arlington, WI 53911 Equipment Sold "AS IS, WHERE IS": All equipment/property is sold "AS IS, WHERE IS" with no warranty or guarantees, expressed or implied, No operational assessments have been made by DPA Auctions on this item, it has been photographed ONLY.



---

### #93 - Float Tires (DR0355)

Float Tires (DR0355), (4) 570/70R38 mounted on rims for Hagie STS12, (1) brand NEW 570/70R38 tire NO RIM. Notes: Item Location: Mazomanie, WI 53560 Equipment Sold "AS IS, WHERE IS": All equipment/property is sold "AS IS, WHERE IS" with no warranty or guarantees, expressed or implied, No operational assessments have been made by DPA Auctions on this item, it has been photographed ONLY.



---

### #94 - Running Gear (DR0339)

Running Gear (DR0339), 5th wheel style running gear, 12.5L-15 tires, 6 bolt hubs. Notes: Item Location: Arlington, WI 53911 Equipment Sold "AS IS, WHERE IS": All equipment/property is sold "AS IS, WHERE IS" with no warranty or guarantees, expressed or implied, No operational assessments have been made by DPA Auctions on this item, it has been photographed ONLY.



---

### #95 - 2006 International 4400 (DR0337)

2006 International 4400 (DR0337), DT466 diesel engine, 10 speed transmission, single axle cab/chassis, air brakes, air lift tag axle, 19' of frame behind the cab, AM/FM cassette radio, air conditioning, cruise control, 22.5 tires, shows 211,617 miles. Notes: Item Location: Arlington, WI 53911 Equipment Sold "AS IS, WHERE IS": All equipment/property is sold "AS IS, WHERE IS" with no warranty or guarantees, expressed or implied, No operational assessments have been made by DPA Auctions on this item, it has been photographed ONLY.



---

### #96 - 2011 CaseIH 5300 Tool Bar (PZ0392)

2011 CaseIH 5300 Tool Bar (PZ0392), 2011 CaseIH 5300 20 knife pull type tool bar, coulters, Yetter double disc sealers, Double coolers, walking tandems, hydraulic wings, rear hitch, flotation tires. Notes: Item Location: Jerseyville, IL 62052 Equipment Sold "AS IS, WHERE IS": All equipment/property is sold "AS IS, WHERE IS" with no warranty or guarantees, expressed or implied, No operational assessments have been made by DPA Auctions on this item, it has been photographed ONLY.



---

### #97 - DMI Tool Bar (PZ0393)

DMI Tool Bar (PZ0393), DMI 13 knife 3-point tool bar, Yetter coulters, double disc sealers, hydraulic wings, flotation tires, tow bar. Notes: Item Location: Armington, IL 61721 Equipment Sold "AS IS, WHERE IS": All equipment/property is sold "AS IS, WHERE IS" with no warranty or guarantees, expressed or implied, No operational assessments have been made by DPA Auctions on this item, it has been photographed ONLY.



---

### #98 - 2014 B-B Heavy Duty Running Gear (PZ0394)

2014 B-B Heavy Duty Running Gear (PZ0394), 2014 B-B Heavy Duty running 5th wheel running gear, 16.5L-16.1 SL flotation tires. Notes: Item Location: New Holland, IL 62671 Equipment Sold "AS IS, WHERE IS": All equipment/property is sold "AS IS, WHERE IS" with no warranty or guarantees, expressed or implied, No operational assessments have been made by DPA Auctions on this item, it has been photographed ONLY.



---

### #99 - 2011 B-B Heavy Duty Running Gear (PZ0395)

2011 B-B Heavy Duty Running Gear (PZ0395), 2011 B-B Heavy Duty running 5th wheel running gear, 16.5L-16.1 SL flotation tires. Notes: Item Location: New Holland, IL 62671 Equipment Sold "AS IS, WHERE IS": All equipment/property is sold "AS IS, WHERE IS" with no warranty or guarantees, expressed or implied, No operational assessments have been made by DPA Auctions on this item, it has been photographed ONLY.



---

### #100 - 2011 B-B Heavy Duty Running Gear (PZ0396)

2011 B-B Heavy Duty Running Gear (PZ0396), 2011 B-B Heavy Duty running 5th wheel running gear, 16.5L-16.1 SL flotation tires. Notes: Item Location: New Holland, IL 62671 Equipment Sold "AS IS, WHERE IS": All equipment/property is sold "AS IS, WHERE IS" with no warranty or guarantees, expressed or implied, No operational assessments have been made by DPA Auctions on this item, it has been photographed ONLY.



---

### #101 - 2011 B-B Heavy Duty Running Gear (PZ0397)

2011 B-B Heavy Duty Running Gear (PZ0397), 2011 B-B Heavy Duty running 5th wheel running gear, 16.5L-16.1 SL flotation tires. Notes: Item Location: New Holland, IL 62671 Equipment Sold "AS IS, WHERE IS": All equipment/property is sold "AS IS, WHERE IS" with no warranty or guarantees, expressed or implied, No operational assessments have been made by DPA Auctions on this item, it has been photographed ONLY.



---

### #102 - 2008 Chevrolet 2500HD Extended Cab Pickup (PZ0398, Unit 42507)

2008 Chevrolet 2500HD Extended Cab Pickup (PZ0398, Unit 42507), 4x4, Vortec 6.0L V8 gas engine, automatic transmission, air conditioning, heat, Am/Fm radio, cruise control, power windows & locks, running boards, DMI hitch, 35% tires, shows 171,725 miles. Notes: PLEASE ALLOW AT LEAST 60 DAYS FOR TITLE TRANSFER. Item Location: Dwight, IL 60420 Equipment Sold "AS IS, WHERE IS": All equipment/property is sold "AS IS, WHERE IS" with no warranty or guarantees, expressed or implied, No operational assessments have been made by DPA Auctions on this item, it has been photographed ONLY.



---

### #103 - 1993 Kenworth T600 Liquid Nurse Truck (NP7264)

1993 Kenworth T600 Liquid Nurse Truck (NP7264), Detroit 12.7L diesel engine, 10 speed transmission, air conditioning, tandem axle, NEW 2018 3,300 gallon stainless steel liquid tank, single compartment, full sump, center discharge 3", 2" sparge, stabilized air suspension, dual exhaust, full fenders, 24.5 tires, shows 981,361 miles. Notes: Item Location: Coal Valley, IL 61240 Equipment Sold "AS IS, WHERE IS": All equipment/property is sold "AS IS, WHERE IS" with no warranty or guarantees, expressed or implied, No operational assessments have been made by DPA Auctions on this item, it has been photographed ONLY.



---

### #104 - 2007 Case IH 4410 (DR0352 Unit 22583)

2007 Case IH 4410 (DR0352 Unit 22583), diesel engine, hydrostatic drive, 1200 gallon stainless steel liquid system, 90' boom, foam markers, stainless steel chemical inductor, Raven Viper Pro controller, AIM Command, 380/90R46 row crop tires, front load, rear view camera, AM/FM radio, cab heat/air conditioning, shows 5981 hours. Notes: Item Location: Waupun, WI 53963 Equipment Sold "AS IS, WHERE IS": All equipment/property is sold "AS IS, WHERE IS" with no warranty or guarantees, expressed or implied, No operational assessments have been made by DPA Auctions on this item, it has been photographed ONLY.



---

### #105 - 1968 Trinity Nh3 Tanki (DR0349)

1968 Trinity Nh3 Tanki (DR0349), 18,000 gallon Nh3 storage tank, on steel stands, magnetic float gauge, data tag, Corken pump w/electric motor, dual loadouts. Notes: Item Location: Markesan, WI 53946 Equipment Sold "AS IS, WHERE IS": All equipment/property is sold "AS IS, WHERE IS" with no warranty or guarantees, expressed or implied, No operational assessments have been made by DPA Auctions on this item, it has been photographed ONLY.



---

### #106 - Implement Tires (DR0429)

Implement Tires (DR0429), (2) 21.5L-16.1 tires mounted on 8 bolt wheels, 1 tires is brand NEW. Notes: Item Location: Madelia, MN 56062 Equipment Sold "AS IS, WHERE IS": All equipment/property is sold "AS IS, WHERE IS" with no warranty or guarantees, expressed or implied, No operational assessments have been made by DPA Auctions on this item, it has been photographed ONLY.



---

### #107 - Ditch Witch 7610 Trencher (PD953)

Ditch Witch 7610 Trencher (PD953), 84 HP Deutz diesel engine, runs good, shows 711 hours, backfill blade, MS12 trenching bar with crumber, will dig between 4-5 feet, front weights, needs new ignition wiring but will start and run to load. Notes: Item Location: Slater, IA 50244 Equipment Sold "AS IS, WHERE IS": All equipment/property is sold "AS IS, WHERE IS" with no warranty or guarantees, expressed or implied, No operational assessments have been made by DPA Auctions on this item, it has been photographed ONLY.



---

### #108 - 2006 Ford F350 Crew Cab (PD954)

2006 Ford F350 Crew Cab (PD954), 6.0L power stroke diesel engine that runs good, EGR delete performed 5 years ago and engine light came on and has been on ever since, 192,033 miles, leather seats, heated seats, CD player/AM/FM, power rear sliding window, gooseneck ball and receiver hitch, changed ABS sensor and the ABS light is still on, starts good cold, has a vibration around 45-50 mph and may need new U-joints. Notes: Auxiliary fuel tank in back of truck does not sell with truck. Item Location: Slater, IA 50244 Equipment Sold "AS IS, WHERE IS": All equipment/property is sold "AS IS, WHERE IS" with no warranty or guarantees, expressed or implied, No operational assessments have been made by DPA Auctions on this item, it has been photographed ONLY.





---

### #109 - 2000 Ford F550 Crew Cab (PD951)

2000 Ford F550 Crew Cab (PD951), 4X4, 7.3L power stroke diesel engine runs good, 204,813 miles, leather seats, CD and tape player, am/fm stereo, 9 foot long flat bed with tool boxes, new injectors 3 years ago, rear wheel seal is leaking, pintle hitch and gooseneck ball. Notes: Auxiliary fuel tank in back of truck does not sell with truck. Item Location: Slater, IA 50244 Equipment Sold "AS IS, WHERE IS": All equipment/property is sold "AS IS, WHERE IS" with no warranty or guarantees, expressed or implied, No operational assessments have been made by DPA Auctions on this item, it has been photographed ONLY.



---

### #110 - 2004 Chevy Trailblazer 4X4 (PD952)

2004 Chevy Trailblazer 4X4 (PD952), V8 engine runs good, 230,996 miles, power seats, power sunroof, leather seats, heated seats, power rear vents, seats 7, remote start, Kenwood stereo, dual climate control, programmable garage door openers, tow receiver hitch, front wheel bearing possibly going out, AC/heater fan motor makes noise. Notes: Item Location: Slater, IA 50244 Equipment Sold "AS IS, WHERE IS": All equipment/property is sold "AS IS, WHERE IS" with no warranty or guarantees, expressed or implied, No operational assessments have been made by DPA Auctions on this item, it has been photographed ONLY.



---

### #111 - 1964 Cherokee Steel Inc LP Storage Tank (PZ0337)

1964 Cherokee Steel Inc LP Storage Tank (PZ0337), 12,000 gallon capacity, O.S. DIA 84, SHELL THK. 573, HEAD THK. 328, LENGTH 542, on skids, tank volume gauge, data plate. Notes: This tank must be removed by December 21, 2018, NO EXCEPTIONS. Dismantle, removal and transportation is at the expense, risk and liability of the buyer. Item Location: Shell Rock, IA 50670 Equipment Sold "AS IS, WHERE IS": All equipment/property is sold "AS IS, WHERE IS" with no warranty or guarantees, expressed or implied, No operational assessments have been made by DPA Auctions on this item, it has been photographed ONLY.



---

### #112 - 1000 Gallon Stainless Steel Nurse Tank (CG555)

1000 Gallon Stainless Steel Nurse Tank (CG555), on a running gear, no leaks and good fittings. Notes: Item Location: Red Oak, IA 51566 Equipment Sold "AS IS, WHERE IS": All equipment/property is sold "AS IS, WHERE IS" with no warranty or guarantees, expressed or implied, No operational assessments have been made by DPA Auctions on this item, it has been photographed ONLY.



---

### #113 - Layco Stainless Steel Dry Fertilizer Hopper (CG551)

Layco Stainless Steel Dry Fertilizer Hopper (CG551), top of the box measures 8'x8'. Notes: Item Location: Red Oak, IA 51566 Equipment Sold "AS IS, WHERE IS": All equipment/property is sold "AS IS, WHERE IS" with no warranty or guarantees, expressed or implied, No operational assessments have been made by DPA Auctions on this item, it has been photographed ONLY.



---

### #114 - 30' Layco Conveyor (CG554)

30' Layco Conveyor (CG554), covered conveyor with stand. Notes: Motor and belt were in good working order when taken out of service. Item Location: Red Oak, IA 51566 Equipment Sold "AS IS, WHERE IS": All equipment/property is sold "AS IS, WHERE IS" with no warranty or guarantees, expressed or implied, No operational assessments have been made by DPA Auctions on this item, it has been photographed ONLY.



---

### #115 - 25 Ton Stainless Steel Mix Tank (CG553)

25 Ton Stainless Steel Mix Tank (CG553), load cells, has a mixer and a gear box for a motor to hook to on top, has an opening on top for dry product mixing, lots of fittings on top for multiple products to pump into. Notes: Item Location: Red Oak, IA 51566 Equipment Sold "AS IS, WHERE IS": All equipment/property is sold "AS IS, WHERE IS" with no warranty or guarantees, expressed or implied, No operational assessments have been made by DPA Auctions on this item, it has been photographed ONLY.



---

### #116 - 25 Ton Ferguson Stainless Steel Blend Tank (CG552)

25 Ton Ferguson Stainless Steel Blend Tank (CG552), 100HP Lincoln motor, 8x6 Demco pump, manifold and Kahler panel go with tank, tank sits on a frame and has load cells and a scale readout. Notes: Not sure about working order. Item Location: Red Oak, IA 51566 Equipment Sold "AS IS, WHERE IS": All equipment/property is sold "AS IS, WHERE IS" with no warranty or guarantees, expressed or implied, No operational assessments have been made by DPA Auctions on this item, it has been photographed ONLY.



---

### #117 - 2008 542 Loader (AL518)

2008 542 Loader (AL518), self leveling, 6' John Deere quick attach bucket, will fit on most 5 series tractors, has always been stored inside. The loader is only selling not the tractor. Notes: Shipping available for additional cost. Loading is also available. Item Location: Herscher, IL 60941 Equipment Sold "AS IS, WHERE IS": All equipment/property is sold "AS IS, WHERE IS" with no warranty or guarantees, expressed or implied, No operational assessments have been made by DPA Auctions on this item, it has been photographed ONLY.



---

### #118 - 2007 Dodge Ram 2500 Pickup (PZ0400, Unit 12436)

2007 Dodge Ram 2500 Pickup (PZ0400, Unit 12436), 4x4, 5.7 Hemi gas engine, automatic transmission, air conditioning, heat, Am/Fm CD stereo, power windows & locks, power mirrors, running boards, long box, 50% tires, shows 199,704 miles. Notes: Very weak transmission, please call seller for further information. PLEASE ALLOW AT LEAST 60 DAYS FOR TITLE TRANSFER. Item Location: Creston, IA 50801 Equipment Sold "AS IS, WHERE IS": All equipment/property is sold "AS IS, WHERE IS" with no warranty or guarantees, expressed or implied, No operational assessments have been made by DPA Auctions on this item, it has been photographed ONLY.



---

### #119 - 1998 Terra Gator 8103 Dry Floater (PZ0293, Unit 33471)

998 Terra Gator 8103 Dry Floater (PZ0293, Unit 33471), John Deere diesel engine, Terra Shift transmission, air conditioning, heat, Am/Fm cassette radio, New Leader L3020-13-G4 stainless steel dry spreader box (S/N 113672) with insert, twin spinner, all hydraulic, Good Year 66x43.00-25 front tire, Firestone 66x43.00-25 rear tires, Cab Cam, Raven monitor, lightbar, shows 8075 hours, 76,385 miles. Notes: Item Location: Independence, IA 50644 Equipment Sold "AS IS, WHERE IS": All equipment/property is sold "AS IS, WHERE IS" with no warranty or guarantees, expressed or implied, No operational assessments have been made by DPA Auctions on this item, it has been photographed ONLY.



---

### #120 - Fiat Allis FR100 Loader (PZ0294, Unit 36947)

Fiat Allis FR100 Loader (PZ0294, Unit 36947), diesel engine, shuttle shift transmission, heat, cab, lights, 7' bucket, 17.5-25 tires, shows 8651 hours. Notes: Item Location: Independence, IA 50644 Equipment Sold "AS IS, WHERE IS": All equipment/property is sold "AS IS, WHERE IS" with no warranty or guarantees, expressed or implied, No operational assessments have been made by DPA Auctions on this item, it has been photographed ONLY.



---

### #121 - 1977 Cat 120G Motor Grader (PZ0297)

1977 Cat 120G Motor Grader (PZ0297), Cat 3304 diesel engine, 6 speed forward, 6 speed reverse transmission, heat, cab, lights, hydraulic blade, 13.00-24 TG tires, shows 2717 hours. Notes: New batteries, crack in glass, always shedded. Item Location: Hopkinton, IA 52237 Equipment Sold "AS IS, WHERE IS": All equipment/property is sold "AS IS, WHERE IS" with no warranty or guarantees, expressed or implied, No operational assessments have been made by DPA Auctions on this item, it has been photographed ONLY.



---

### #122 - 1985 Mack Grain Truck (NP7269)

1985 Mack Grain Truck (NP7269), 350 Mack motor, 5 speed transmission, tandem axle, Camel Back suspension, Kann 20' aluminum grain body, 22.5 tires, shows 569,299 miles. Notes: Item Location: Coal Valley, IL 61240 Equipment Sold "AS IS, WHERE IS": All equipment/property is sold "AS IS, WHERE IS" with no warranty or guarantees, expressed or implied, No operational assessments have been made by DPA Auctions on this item, it has been photographed ONLY.



---

### #123 - 1958 Delta Tank Mfg Co LP Storage Tank (PZ0338)

1958 Delta Tank Mfg Co LP Storage Tank (PZ0338), 12,000 gallon capacity, surface area 1055 sq ft, HEAD THK 306, SHELL THK 625, data plate, HSB No. 241274. Notes: This tank must be removed by December 21, 2018, NO EXCEPTIONS. Dismantle, removal and transportation is at the expense, risk and liability of the buyer. Item Location: Shell Rock, IA 50670 Equipment Sold "AS IS, WHERE IS": All equipment/property is sold "AS IS, WHERE IS" with no warranty or guarantees, expressed or implied, No operational assessments have been made by DPA Auctions on this item, it has been photographed ONLY.



---

### #124 - JLG 60H Lift (KMK628)

JLG 60H Lift (KMK628), Grind staff 2.3, 60' max height, 3' x 5' platform size, shows 8661 hours. Notes: It runs, but has a bent rod. Item Location: Sioux City, IA 51105 Equipment Sold "AS IS, WHERE IS": All equipment/property is sold "AS IS, WHERE IS" with no warranty or guarantees, expressed or implied, No operational assessments have been made by DPA Auctions on this item, it has been photographed ONLY.



---

**#125 - 2010 Merritt Aluminum Hopper Bottom (PD937)**

2010 Merritt Aluminum Hopper Bottom (PD937), 42 foot, 66 inch sides, tandem axle, air ride suspension, new brakes, air dump valve. Notes: Part of Retirement for Huffman Feed & Supply. Item Location: New Sharon, IA 50207 Equipment Sold "AS IS, WHERE IS": All equipment/property is sold "AS IS, WHERE IS" with no warranty or guarantees, expressed or implied, No operational assessments have been made by DPA Auctions on this item, it has been photographed ONLY.



---

**#126 - 2013 Timpfe Aluminum Hopper Bottom (PD933)**

2013 Timpfe Aluminum Hopper Bottom (PD933), 42 foot, 66 inch sides, tandem axle, air ride suspension, roll tarp, air dump valve, new brakes. Notes: Part of Retirement for Huffman Feed & Supply. Item Location: New Sharon, IA 50207 Equipment Sold "AS IS, WHERE IS": All equipment/property is sold "AS IS, WHERE IS" with no warranty or guarantees, expressed or implied, No operational assessments have been made by DPA Auctions on this item, it has been photographed ONLY.



---

**#128 - 2009 Freightliner Columbia 120 (PD936)**

2009 Freightliner Columbia 120 (PD936), Mercedes 460 HP engine, 10 speed transmission, radio, 75r 22.5 tires, factory day cab, AC/Heat, engine brake, cruise control, tandem axle full screw, air ride suspension, air ride cab, 180 inch WB, aluminum disc wheels, used for local hauling only, shows 695,748 miles. Notes: Part of Retirement for Huffman Feed & Supply. Item Location: New Sharon, IA 50207 Equipment Sold "AS IS, WHERE IS": All equipment/property is sold "AS IS, WHERE IS" with no warranty or guarantees, expressed or implied, No operational assessments have been made by DPA Auctions on this item, it has been photographed ONLY.



---

**#129 - 1990 GMC Topkick C7H042 Feed Truck (PD931)**

1990 GMC Topkick C7H042 Feed Truck (PD931), 282,005 miles, Cat Diesel motor, 5 speed transmission, 2 speed rear end, 12 ton 3 compartment, overhead discharge auger, left side controls, spring ride suspension, single axle, 10.00 - 20 tires. Notes: Part of Retirement for Huffman Feed & Supply. Item Location: New Sharon, IA 50207 Equipment Sold "AS IS, WHERE IS": All equipment/property is sold "AS IS, WHERE IS" with no warranty or guarantees, expressed or implied, No operational assessments have been made by DPA Auctions on this item, it has been photographed ONLY.



---

**#130 - 2003 GMC Sierra C1500 (KMK629)**

2003 GMC Sierra C1500 (KMK629), 6 cylinder gas engine, automatic transmission, am/fm radio, heat and air conditioning, shows 253,840 miles. Notes: Item Location: Sioux City, IA 51105 Equipment Sold "AS IS, WHERE IS": All equipment/property is sold "AS IS, WHERE IS" with no warranty or guarantees, expressed or implied, No operational assessments have been made by DPA Auctions on this item, it has been photographed ONLY.



---

**#131 - Brand New Powerex Vacuum Pump System (AL519)**

Brand New Powerex Vacuum Pump System (AL519), 460 volt, 3 phase, will pull a vacuum to 19", hand and auto operation, it sits on 30 gallon reserve tank, has 2" vacuum connection, it needs 460 volt three phase wiring, shows 0 hours. Notes: Item Location: Omaha, NE 68138 Equipment Sold "AS IS, WHERE IS": All equipment/property is sold "AS IS, WHERE IS" with no warranty or guarantees, expressed or implied, No operational assessments have been made by DPA Auctions on this item, it has been photographed ONLY.



---

**#132 - 1998 Generac 15KW Propane Generator (AL520)**

1998 Generac 15KW Propane Generator (AL520), Fiat engine, propane, 1800 rpm, 120/240 volts, single phase, liquid cooled, built in automatic transfer switch, comes with brand new battery, shows 296 hours. Notes: Item Location: Palmyra, NE 68418 Equipment Sold "AS IS, WHERE IS": All equipment/property is sold "AS IS, WHERE IS" with no warranty or guarantees, expressed or implied, No operational assessments have been made by DPA Auctions on this item, it has been photographed ONLY.



---

**#133 - Kozy Heat Wood Burning Insert (AL521)**

Kozy Heat Wood Burning Insert (AL521), stove requires no electricity, was mounted to outside wall to the home and heated 1500 square feet for 20 years, pulls air from outside and never brought any cold air in around the doors or the windows. Notes: Item Location: Palmyra, NE 68418 Equipment Sold "AS IS, WHERE IS": All equipment/property is sold "AS IS, WHERE IS" with no warranty or guarantees, expressed or implied, No operational assessments have been made by DPA Auctions on this item, it has been photographed ONLY.



### #134 - Karrykrimp 2 Hose Crimper, Powerpack And Dies (TH346)

Karrykrimp 2 Hose Crimper, Powerpack And Dies (TH346), The Karrykrimp 2 is a portable, compact and ruggedly built crimper that is an economic alternative for the self-assembly of Parker's hose and fittings, Parker's Karrykrimp 2 models can crimp Parkrimp style straight or bent-stem stainless and stainless steel fittings with dies of 1/4" to 5/8". Notes: Item Location: Ewing, IL 62836 Equipment Sold "AS IS, WHERE IS": All equipment/property is sold "AS IS, WHERE IS" with no warranty or guarantees, expressed or implied, No operational assessments have been made by DPA Auctions on this item, it has been photographed ONLY.



### #135 - 1983 Fruehauf (DR0381)

1983 Fruehauf (DR0381), storage trailer ONLY, 48' dry van trailer, rear cargo doors, tandem sliding axles, 24.5 tires, good floor and roof. Notes: Item Location: Chaseburg, WI 54621 Equipment Sold "AS IS, WHERE IS": All equipment/property is sold "AS IS, WHERE IS" with no warranty or guarantees, expressed or implied, No operational assessments have been made by DPA Auctions on this item, it has been photographed ONLY.



### #136 - 1998 Ranco Blender (DL373)

1998 Ranco Blender (DL373), 1998 Ranco blender, 4 compartments plus 2 micro bins, supplemental micro bin with stand, U-trough auger for the micros, stored inside, timers and electrical control panel, 6 electric drives. Notes: Seller can assist with loading. Item Location: Bothwell Ontario, Equipment Sold "AS IS, WHERE IS": All equipment/property is sold "AS IS, WHERE IS" with no warranty or guarantees, expressed or implied, No operational assessments have been made by DPA Auctions on this item, it has been photographed ONLY.



### #137 - AgChem TerraGator Roof (DL374)

AgChem TerraGator Roof (DL374), AgChem TerraGator roof, fits 8103/8104 style machines, was installed for about a month then put in storage, still in original shipping crate. Notes: Seller can assist with loading. Item Location: Bothwell Ontario, Equipment Sold "AS IS, WHERE IS": All equipment/property is sold "AS IS, WHERE IS" with no warranty or guarantees, expressed or implied, No operational assessments have been made by DPA Auctions on this item, it has been photographed ONLY.



### #138 - Irrigation Pipe (DR0426)

Irrigation Pipe (DR0426), (50+) pieces of 8" irrigation pipe, 30'. Notes: Item Location: Ponca, NE 68770 Equipment Sold "AS IS, WHERE IS": All equipment/property is sold "AS IS, WHERE IS" with no warranty or guarantees, expressed or implied, No operational assessments have been made by DPA Auctions on this item, it has been photographed ONLY.



### #139 - Irrigation Pipe (DR0427)

Irrigation Pipe (DR0427), (50+) pieces of 6" irrigation pipe, 30'. Notes: Item Location: Ponca, NE 68770 Equipment Sold "AS IS, WHERE IS": All equipment/property is sold "AS IS, WHERE IS" with no warranty or guarantees, expressed or implied, No operational assessments have been made by DPA Auctions on this item, it has been photographed ONLY.



### #140 - Irrigation Motor (DR0428)

Irrigation Motor (DR0428), Allis Chalmers 6 cylinder diesel power unit, Twin disc pump. Notes: Has not run for awhile. Always in shed. Item Location: Ponca, NE 68770 Equipment Sold "AS IS, WHERE IS": All equipment/property is sold "AS IS, WHERE IS" with no warranty or guarantees, expressed or implied, No operational assessments have been made by DPA Auctions on this item, it has been photographed ONLY.



### #141 - DMI 4200 II Tool Bar (DL369)

DMI 4200 II Tool Bar (DL369), 50', 20 knife pull type tool bar, w/ meter, hydraulic wings, rear hitch. Notes: Item Location: Fairfax, MN 55332 Equipment Sold "AS IS, WHERE IS": All equipment/property is sold "AS IS, WHERE IS" with no warranty or guarantees, expressed or implied, No operational assessments have been made by DPA Auctions on this item, it has been photographed ONLY.



### #142 - Nitro Master NH3 Tool Bar (DL364)

Nitro Master NH3 Tool Bar (DL364), 52 foot, 19 knife, 2 AG79 ground driven pumps, gear driven pumps, cooler, controller, walking tandem axles, hydraulic wings & gauge wheels, walking tandem wing wheels. Notes: Item Location: Buffalo Lake, MN 55314 Equipment Sold "AS IS, WHERE IS": All equipment/property is sold "AS IS, WHERE IS" with no warranty or guarantees, expressed or implied, No operational assessments have been made by DPA Auctions on this item, it has been photographed ONLY.





### #143 - NH3 Caddy (DL365)

NH3 Caddy (DL365), Nh3 pull type caddy, 560 gallon tank, 6 row, data plate good. Notes: Item Location: Gibbon, MN 55335 Equipment Sold "AS IS, WHERE IS": All equipment/property is sold "AS IS, WHERE IS" with no warranty or guarantees, expressed or implied, No operational assessments have been made by DPA Auctions on this item, it has been photographed ONLY.



### #144 - Nitro Master 8500 (DL367)

Nitro Master 8500 (DL367), pull type tool bar, 52.5 foot, 21 knife, hydraulic wings, hydraulic gauge wheels, three hitches. Notes: Item Location: Sleepy Eye, MN 56085 Equipment Sold "AS IS, WHERE IS": All equipment/property is sold "AS IS, WHERE IS" with no warranty or guarantees, expressed or implied, No operational assessments have been made by DPA Auctions on this item, it has been photographed ONLY.



### #145 - Blu Jet 24 Knife Tool Bar (DL368)

Blu Jet 24 Knife Tool Bar (DL368), pull type tool bar, 60' with 30" spacing, hydraulic wings, double cooler, double winch, three hitches, 12.4-38 main frame tires. Notes: Item Location: Sleepy Eye, MN 56085 Equipment Sold "AS IS, WHERE IS": All equipment/property is sold "AS IS, WHERE IS" with no warranty or guarantees, expressed or implied, No operational assessments have been made by DPA Auctions on this item, it has been photographed ONLY.



### #146 - 2007 IHC 7500 Dry Tender Truck (PZ0402)

2007 IHC 7500 Dry Tender Truck (PZ0402), 444E 300 hp diesel engine, 8LL transmission, air conditioning, heat, Am/Fm radio, tandem axle, full screw, 2 - steerable air lift tag axles, 16,000 lb steerable front axle, 40,000 lb rears, 2 - 12,000 lb steerable axles, New Never Used Doyle 24 ton 6 compartment stainless steel dry tender box, 20' side discharge auger with 14' discharge height, 34" frame rail to match+B331 truck frame, 304 stainless steel hopper-auger flighting-gates-slides and hydraulic hard lines, 2x6 stainless steel tender frame capped on ends, front and rear ladders, mounted SRT roll over tarp with stainless steel end caps, shows 254,977 miles. Notes: Item Location: Palmyra, MO 63461 Equipment Sold "AS IS, WHERE IS": All equipment/property is sold "AS IS, WHERE IS" with no warranty or guarantees, expressed or implied, No operational assessments have been made by DPA Auctions on this item, it has been photographed ONLY.



### #147 - Pull Type Caddy 6/8 row (DL366)

Pull Type Caddy 6/8 row (DL366), 28% Pull Type Caddy, 6/8 row rear mount bar, 500 gallon poly liquid tank, manual fold wings, single axle, ground drive pump. Notes: Item Location: Gibbon, MN 55335 Equipment Sold "AS IS, WHERE IS": All equipment/property is sold "AS IS, WHERE IS" with no warranty or guarantees, expressed or implied, No operational assessments have been made by DPA Auctions on this item, it has been photographed ONLY.



### #148 - 2001 CEI Pacer Feed Trailer (DL363)

2001 CEI Pacer Feed Trailer (DL363), 2001 CEI Pacer feed trailer, 11R-22.5 tires, 10 compartment, overhead auger, remote control, tandem axle. Notes: Needs frame work to comply with DOT specs. Item Location: Gibbon, MN 55335 Equipment Sold "AS IS, WHERE IS": All equipment/property is sold "AS IS, WHERE IS" with no warranty or guarantees, expressed or implied, No operational assessments have been made by DPA Auctions on this item, it has been photographed ONLY.



### #149 - 1974 Butler Liquid Trailer (DL371)

1974 Butler Liquid Trailer (DL371), Butler 5700 gallon capacity liquid trailer, stainless steel, 1 compartment, non insulated, spring ride suspension, tandem axle, 11R22.5 tires. Notes: Pump needs work. Item Location: Sleepy Eye, MN 56085 Equipment Sold "AS IS, WHERE IS": All equipment/property is sold "AS IS, WHERE IS" with no warranty or guarantees, expressed or implied, No operational assessments have been made by DPA Auctions on this item, it has been photographed ONLY.



### #150 - 1991 GMC Topkick Service Truck (DL370)

1991 GMC Topkick Service Truck (DL370), 1991 GMC Topkick - IMT 2815 Hoise 4700# at 6ft, 3116 Caterpillar engine, 6 speed transmission, service/tire box, 255 /80 R 22.5 tires, shows 166,296 miles. Notes: Tools are not included. Item Location: Sleepy Eye, MN 56085 Equipment Sold "AS IS, WHERE IS": All equipment/property is sold "AS IS, WHERE IS" with no warranty or guarantees, expressed or implied, No operational assessments have been made by DPA Auctions on this item, it has been photographed ONLY.



### #151 - Willmar 16T Dry Tender Box (DL375)

Willmar 16T Dry Tender Box (DL375), Willmar dry tender box with 16 ton capacity, side discharge auger, roll over tarp. Notes: Running gear is NOT included. Seller can help load if needed. Item Location: Serena, IL 60549 Equipment Sold "AS IS, WHERE IS": All equipment/property is sold "AS IS, WHERE IS" with no warranty or guarantees, expressed or implied, No operational assessments have been made by DPA Auctions on this item, it has been photographed ONLY.



---

### #152 - 2018 Schulte 5026 Bat Wing Mower (CG558)

2018 Schulte 5026 Bat Wing Mower (CG558), 26' width, walking tandems, full chain grass catchers, (rear and front), foam filled airplane tires, hydraulic lift, tow lights, large 1000 PTO shaft. Notes: Used on approx. 900 acres. Item Location: Prescott, IA 50859 Equipment Sold "AS IS, WHERE IS": All equipment/property is sold "AS IS, WHERE IS" with no warranty or guarantees, expressed or implied, No operational assessments have been made by DPA Auctions on this item, it has been photographed ONLY.



---

### #153 - 2018 Great Plains 1206NT Drill (CG557)

2018 Great Plains 1206NT Drill (CG557), native grass series II drill, 12' width, 3-box system, rear hitch, rear hydraulics, 75R22.5 rubber. Notes: Used on approx. 600 acres. Item Location: Prescott, IA 50859 Equipment Sold "AS IS, WHERE IS": All equipment/property is sold "AS IS, WHERE IS" with no warranty or guarantees, expressed or implied, No operational assessments have been made by DPA Auctions on this item, it has been photographed ONLY.



---

### #154 - 1988 John Deere 4250 (CG556)

1988 John Deere 4250 (CG556), J D 6 cylinder turbo diesel, 15 speed power shift, 4 speed reverse, A/C, heat, 3 point, 3 SCV's, PTO, mew rubber, new paint, ne A/C pump, approx. 11,000 hours. Notes: Item Location: Prescott, IA 50859 Equipment Sold "AS IS, WHERE IS": All equipment/property is sold "AS IS, WHERE IS" with no warranty or guarantees, expressed or implied, No operational assessments have been made by DPA Auctions on this item, it has been photographed ONLY.



---

### #155 - 2007 Sterling (DR9863 Unit 3066)

2007 Sterling (DR9863 Unit 3066), diesel engine, automatic transmission, single axle, air brakes, Arrow 3500 gallon LP delivery body, NB # 34883, metered hose reel & pump, AM/FM radio, air conditioning, 22.5 tires, shows 123,569 miles. Notes: Item Location: Marshfield, WI 54449 Equipment Sold "AS IS, WHERE IS": All equipment/property is sold "AS IS, WHERE IS" with no warranty or guarantees, expressed or implied, No operational assessments have been made by DPA Auctions on this item, it has been photographed ONLY.



---

### #156 - EZ-Go (DR0430)

EZ-Go (DR0430), electric golf cart, (batteries are weak), canopy, aluminum rear work box, has charger. Notes: Cart does run and move but batteries NEED REPLACED. Item Location: Madelia, MN 56062 Equipment Sold "AS IS, WHERE IS": All equipment/property is sold "AS IS, WHERE IS" with no warranty or guarantees, expressed or implied, No operational assessments have been made by DPA Auctions on this item, it has been photographed ONLY.



---

### #157 - Toro LX425 Twin Cam Riding Mower (NP7266)

Toro LX425 Twin Cam Riding Mower (NP7266), Kohler Courage 20 gas motor, 42" cutting deck, MTD 2-bag bagging attachment (easily removable), NEW battery, 20x8.00-8 rear tires, 16x6.00-6 front tires Notes: Item Location: Arlington, NE 68002 Equipment Sold "AS IS, WHERE IS": All equipment/property is sold "AS IS, WHERE IS" with no warranty or guarantees, expressed or implied, No operational assessments have been made by DPA Auctions on this item, it has been photographed ONLY.



---

### #158 - DMI 5250 Toolbar (DR9692 Unit 6)

DMI 5250 Toolbar (DR9692 Unit 6), 15 knife 37.5' pull type tool bar, hydraulic wings and gauge wheels. Notes: Item Location: Hector, MN 55342 Equipment Sold "AS IS, WHERE IS": All equipment/property is sold "AS IS, WHERE IS" with no warranty or guarantees, expressed or implied, No operational assessments have been made by DPA Auctions on this item, it has been photographed ONLY.



---

### #159 - 2013 BBI Magna Spread Fertilizer Bed (DL376)

2013 BBI Magna Spread Fertilizer Bed (DL376), 10 ton BBI twin bin variable rate bed, all new bearings and chain last winter. Notes: Pump is not included. Item Location: Amity, MO 64422 Equipment Sold "AS IS, WHERE IS": All equipment/property is sold "AS IS, WHERE IS" with no warranty or guarantees, expressed or implied, No operational assessments have been made by DPA Auctions on this item, it has been photographed ONLY.



---

### #160 - Progressive 1300 NH3 Strip Tool Bar (AL522)

Progressive 1300 NH3 Strip Tool Bar (AL522), set up for 12 row, 30" Strip till, simplex NH3 cooler, new last year center frame walking tandems, bar is in good shape, has markers, Hiniker monitor and cables, speed sensor, comes with pallet full of extra parts, the extra parts include bearings, blades, knives, shanks and springs. Notes: Item Location: Verona, IL 60479 Equipment Sold "AS IS, WHERE IS": All equipment/property is sold "AS IS, WHERE IS" with no warranty or guarantees, expressed or implied, No operational assessments have been made by DPA Auctions on this item, it has been photographed ONLY.



---

### #161 - (2) Tru Count Air Clutch Boxes (ED677)

(2) Tru Count Air Clutch Boxes (ED677), total of 2 Tru Count air clutch system boxes only. Notes: Item Location: Frankfort, IN 46041 Equipment Sold "AS IS, WHERE IS": All equipment/property is sold "AS IS, WHERE IS" with no warranty or guarantees, expressed or implied, No operational assessments have been made by DPA Auctions on this item, it has been photographed ONLY.



---

### #162 - (4) Smart Boxes Off John Deere DB90 (ED678)

(4) Smart Boxes Off John Deere DB90 (ED678), total of 4 smart boxes off of a John Deere DB90, will go on any JD planter: 1700, 1790, DB bars, wiring harnesses included. Notes: Item Location: Frankfort, IN 46041 Equipment Sold "AS IS, WHERE IS": All equipment/property is sold "AS IS, WHERE IS" with no warranty or guarantees, expressed or implied, No operational assessments have been made by DPA Auctions on this item, it has been photographed ONLY.



---

### #163 - (31) John Deere Row Harness (ED661)

(31) John Deere Row Harness (ED661), 31 total row harnesses plus plastic brackets for any John Deere 1770 or DB planter. Notes: Item Location: Frankfort, IN 46041 Equipment Sold "AS IS, WHERE IS": All equipment/property is sold "AS IS, WHERE IS" with no warranty or guarantees, expressed or implied, No operational assessments have been made by DPA Auctions on this item, it has been photographed ONLY.



---

### #164 - (32) Pro Shaft Drives (ED662)

(32) Pro Shaft Drives (ED662), total of 32 pro shaft drives from John Deere 1790 split row. Notes: Item Location: Frankfort, IN 46041 Equipment Sold "AS IS, WHERE IS": All equipment/property is sold "AS IS, WHERE IS" with no warranty or guarantees, expressed or implied, No operational assessments have been made by DPA Auctions on this item, it has been photographed ONLY.



---

### #165 - Chains and Sprockets from JD 1790 (ED663)

Chains and Sprockets from JD 1790 (ED663), miscellaneous chains and sprockets from a John Deere 1790 split row. Notes: Item Location: Frankfort, IN 46041 Equipment Sold "AS IS, WHERE IS": All equipment/property is sold "AS IS, WHERE IS" with no warranty or guarantees, expressed or implied, No operational assessments have been made by DPA Auctions on this item, it has been photographed ONLY.



---

### #166 - (1) 32 Row John Deere Harness (ED664)

(1) 32 Row John Deere Harness (ED664), 32 row John Deere planter harness from JD 1790. Notes: Item Location: Frankfort, IN 46041 Equipment Sold "AS IS, WHERE IS": All equipment/property is sold "AS IS, WHERE IS" with no warranty or guarantees, expressed or implied, No operational assessments have been made by DPA Auctions on this item, it has been photographed ONLY.



---

### #167 - Half Width Disconnect (ED665)

Half Width Disconnect (ED665), half width disconnect from a John Deere 1790. Notes: Item Location: Frankfort, IN 46041 Equipment Sold "AS IS, WHERE IS": All equipment/property is sold "AS IS, WHERE IS" with no warranty or guarantees, expressed or implied, No operational assessments have been made by DPA Auctions on this item, it has been photographed ONLY.



---

### #168 - (16) John Deere Air Bags (ED675)

(16) John Deere Air Bags (ED675), total of 16 John Deere air bags with brackets. Notes: Item Location: Frankfort, IN 46041 Equipment Sold "AS IS, WHERE IS": All equipment/property is sold "AS IS, WHERE IS" with no warranty or guarantees, expressed or implied, No operational assessments have been made by DPA Auctions on this item, it has been photographed ONLY.



---

### #169 - (2) Half Width Disconnects (ED666)

(2) Half Width Disconnects (ED666), total of 2 half width disconnects from a John Deere 1790. Notes: Item Location: Frankfort, IN 46041 Equipment Sold "AS IS, WHERE IS": All equipment/property is sold "AS IS, WHERE IS" with no warranty or guarantees, expressed or implied, No operational assessments have been made by DPA Auctions on this item, it has been photographed ONLY.



---

### #170 - (31) John Deere Closing Wheel Brackets (ED669)

(31) John Deere Closing Wheel Brackets (ED669), total of 31 John Deere closing wheel brackets, came from John Deere 1790 but will go on any John Deere planter 1700 and newer. Notes: Item Location: Frankfort, IN 46041 Equipment Sold "AS IS, WHERE IS": All equipment/property is sold "AS IS, WHERE IS" with no warranty or guarantees, expressed or implied, No operational assessments have been made by DPA Auctions on this item, it has been photographed ONLY.



---

### #171 - (12) Precision Planting Eset Plates (ED670)

(12) Precision Planting Eset Plates (ED670), total of 12 Precision Planting Eset plates. Notes: Item Location: Frankfort, IN 46041 Equipment Sold "AS IS, WHERE IS": All equipment/property is sold "AS IS, WHERE IS" with no warranty or guarantees, expressed or implied, No operational assessments have been made by DPA Auctions on this item, it has been photographed ONLY.



---

### #172 - Precision Planting Hydraulic Drive (ED672)

Precision Planting Hydraulic Drive (ED672), one precision planting hydraulic drive. Notes: Item Location: Frankfort, IN 46041 Equipment Sold "AS IS, WHERE IS": All equipment/property is sold "AS IS, WHERE IS" with no warranty or guarantees, expressed or implied, No operational assessments have been made by DPA Auctions on this item, it has been photographed ONLY.



---

### #173 - Precision Planting Hydraulic Drive (ED673)

Precision Planting Hydraulic Drive (ED673), one precision planting hydraulic drive. Notes: Item Location: Frankfort, IN 46041 Equipment Sold "AS IS, WHERE IS": All equipment/property is sold "AS IS, WHERE IS" with no warranty or guarantees, expressed or implied, No operational assessments have been made by DPA Auctions on this item, it has been photographed ONLY.



---

### #174 - (16) John Deere Air Bags (ED674)

(16) John Deere Air Bags (ED674), total of 16 John Deere air bags with brackets. Notes: Item Location: Frankfort, IN 46041 Equipment Sold "AS IS, WHERE IS": All equipment/property is sold "AS IS, WHERE IS" with no warranty or guarantees, expressed or implied, No operational assessments have been made by DPA Auctions on this item, it has been photographed ONLY.



---

### #175 - (32) Hex Shaft Drives (ED679)

(32) Hex Shaft Drives (ED679), total of 32 Hex shaft drives from a John Deere 1790 split row, 2 of them have row command clutches. Notes: Item Location: Frankfort, IN 46041 Equipment Sold "AS IS, WHERE IS": All equipment/property is sold "AS IS, WHERE IS" with no warranty or guarantees, expressed or implied, No operational assessments have been made by DPA Auctions on this item, it has been photographed ONLY.



---

### #176 - John Deere Ground Drive (ED680)

John Deere Ground Drive (ED680), John Deere ground drive with chains and sprockets, as well as 3 U-bolts, came from JD 1790 split row. Notes: Item Location: Frankfort, IN 46041 Equipment Sold "AS IS, WHERE IS": All equipment/property is sold "AS IS, WHERE IS" with no warranty or guarantees, expressed or implied, No operational assessments have been made by DPA Auctions on this item, it has been photographed ONLY.



---

### #177 - John Deere 1790 Chains and Sprockets (ED682)

John Deere 1790 Chains and Sprockets (ED682), chains and sprockets for Hex shaft system, came off a John Deere 1790 split row planter, chains were taken off at master link not cut off. Notes: Item Location: Frankfort, IN 46041 Equipment Sold "AS IS, WHERE IS": All equipment/property is sold "AS IS, WHERE IS" with no warranty or guarantees, expressed or implied, No operational assessments have been made by DPA Auctions on this item, it has been photographed ONLY.



---

### #178 - (3) John Deere Meters (ED657)

(3) John Deere Meters (ED657), 2 meters with no clutches, 1 with pro shaft drive clutch. Notes: Item Location: Frankfort, IN 46041 Equipment Sold "AS IS, WHERE IS": All equipment/property is sold "AS IS, WHERE IS" with no warranty or guarantees, expressed or implied, No operational assessments have been made by DPA Auctions on this item, it has been photographed ONLY.





---

### #179 - (14) John Deere Meters (ED658)

(14) John Deere Meters (ED658), 14 total meters with electric row command clutches. Notes: Item Location: Frankfort, IN 46041 Equipment Sold "AS IS, WHERE IS": All equipment/property is sold "AS IS, WHERE IS" with no warranty or guarantees, expressed or implied, No operational assessments have been made by DPA Auctions on this item, it has been photographed ONLY.



---

### #180 - (16) John Deere Meters (ED659)

(16) John Deere Meters (ED659), 16 total meters with electric row command clutches. Notes: Item Location: Frankfort, IN 46041 Equipment Sold "AS IS, WHERE IS": All equipment/property is sold "AS IS, WHERE IS" with no warranty or guarantees, expressed or implied, No operational assessments have been made by DPA Auctions on this item, it has been photographed ONLY.



---

### #181 - (16) Precision Planting Eset Meters (ED660)

(16) Precision Planting Eset Meters (ED660), 16 total Precision Planting Eset meters with Tru Count air clutches. Notes: Item Location: Frankfort, IN 46041 Equipment Sold "AS IS, WHERE IS": All equipment/property is sold "AS IS, WHERE IS" with no warranty or guarantees, expressed or implied, No operational assessments have been made by DPA Auctions on this item, it has been photographed ONLY.



---

### #182 - (3) Brush Meters (ED667)

(3) Brush Meters (ED667), 3 total brush meters for Kinze bean planters. Notes: Item Location: Frankfort, IN 46041 Equipment Sold "AS IS, WHERE IS": All equipment/property is sold "AS IS, WHERE IS" with no warranty or guarantees, expressed or implied, No operational assessments have been made by DPA Auctions on this item, it has been photographed ONLY.



---

### #183 - (2) Kinze Finger Pick Up Meters (ED668)

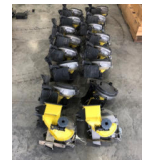
(2) Kinze Finger Pick Up Meters (ED668), total of 2 Kinze finger pick up meters. Notes: Item Location: Frankfort, IN 46041 Equipment Sold "AS IS, WHERE IS": All equipment/property is sold "AS IS, WHERE IS" with no warranty or guarantees, expressed or implied, No operational assessments have been made by DPA Auctions on this item, it has been photographed ONLY.



---

### #184 - (16) John Deere Meters (ED676)

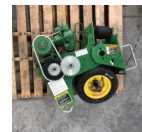
(16) John Deere Meters (ED676), total of 16 John Deere meters from JD 1790 split row. Notes: Item Location: Frankfort, IN 46041 Equipment Sold "AS IS, WHERE IS": All equipment/property is sold "AS IS, WHERE IS" with no warranty or guarantees, expressed or implied, No operational assessments have been made by DPA Auctions on this item, it has been photographed ONLY.



---

### #185 - John Deere Ground Driven Fertilizer Pump (ED681)

John Deere Ground Driven Fertilizer Pump (ED681), John Deere ground driven fertilizer pump came off a John Deere 1790 split row planter. Notes: Item Location: Frankfort, IN 46041 Equipment Sold "AS IS, WHERE IS": All equipment/property is sold "AS IS, WHERE IS" with no warranty or guarantees, expressed or implied, No operational assessments have been made by DPA Auctions on this item, it has been photographed ONLY.



---

### #186 - Friesen Titan 4 Box Bumper Pull Seed Tender (ED656)

Friesen Titan 4 Box Bumper Pull Seed Tender (ED656), unit has a Honda engine on it, poly auger/flighting. Notes: Item Location: Frankfort, IN 46041 Equipment Sold "AS IS, WHERE IS": All equipment/property is sold "AS IS, WHERE IS" with no warranty or guarantees, expressed or implied, No operational assessments have been made by DPA Auctions on this item, it has been photographed ONLY.



---

### #187 - (18) John Deere ProMax 40 Plates (ED671)

(18) John Deere ProMax 40 Plates (ED671), total of 18 John Deere ProMax 40 John Deere corn plates. Notes: Item Location: Frankfort, IN 46041 Equipment Sold "AS IS, WHERE IS": All equipment/property is sold "AS IS, WHERE IS" with no warranty or guarantees, expressed or implied, No operational assessments have been made by DPA Auctions on this item, it has been photographed ONLY.



---

**#188 - (32) John Deere Bean Plates (ED683)**

(32) John Deere Bean Plates (ED683), total of 32 John Deere bean plates. Notes: Item Location: Frankfort, IN 46041 Equipment Sold "AS IS, WHERE IS": All equipment/property is sold "AS IS, WHERE IS" with no warranty or guarantees, expressed or implied, No operational assessments have been made by DPA Auctions on this item, it has been photographed ONLY.



---

**#189 - Poly Shuttles (DR0357)**

Poly Shuttles (DR0357), (2) 120 gallon poly shuttle tanks, NO PUMPS. Notes: Item Location: Chaseburg, WI 54621 Equipment Sold "AS IS, WHERE IS": All equipment/property is sold "AS IS, WHERE IS" with no warranty or guarantees, expressed or implied, No operational assessments have been made by DPA Auctions on this item, it has been photographed ONLY.



---

**#190 - Poly Shuttles (DR0358)**

Poly Shuttles (DR0358), (2) 120 gallon poly shuttle tanks, 1 has Flowserve 12 volt pump. Notes: Item Location: Chaseburg, WI 54621 Equipment Sold "AS IS, WHERE IS": All equipment/property is sold "AS IS, WHERE IS" with no warranty or guarantees, expressed or implied, No operational assessments have been made by DPA Auctions on this item, it has been photographed ONLY.



---

**#191 - Poly Shuttles (DR0359)**

Poly Shuttles (DR0359), (2) 120 gallon poly shuttle tanks, NO PUMPS. Notes: Item Location: Chaseburg, WI 54621 Equipment Sold "AS IS, WHERE IS": All equipment/property is sold "AS IS, WHERE IS" with no warranty or guarantees, expressed or implied, No operational assessments have been made by DPA Auctions on this item, it has been photographed ONLY.



---

**#192 - Poly Shuttles (DR0360)**

Poly Shuttles (DR0360), (2) 120 gallon poly shuttle tanks, both have Flowserve 12 volt pump. Notes: Item Location: Chaseburg, WI 54621 Equipment Sold "AS IS, WHERE IS": All equipment/property is sold "AS IS, WHERE IS" with no warranty or guarantees, expressed or implied, No operational assessments have been made by DPA Auctions on this item, it has been photographed ONLY.



---

**#193 - Poly Shuttles (DR0361)**

Poly Shuttles (DR0361), 125 gallon poly shuttle tank, metered pump. Notes: Item Location: Chaseburg, WI 54621 Equipment Sold "AS IS, WHERE IS": All equipment/property is sold "AS IS, WHERE IS" with no warranty or guarantees, expressed or implied, No operational assessments have been made by DPA Auctions on this item, it has been photographed ONLY.



---

**#194 - Poly Shuttles (DR0362)**

Poly Shuttles (DR0362), 125 gallon poly shuttle tank, metered pump. Notes: Item Location: Chaseburg, WI 54621 Equipment Sold "AS IS, WHERE IS": All equipment/property is sold "AS IS, WHERE IS" with no warranty or guarantees, expressed or implied, No operational assessments have been made by DPA Auctions on this item, it has been photographed ONLY.



---

**#195 - Poly Shuttles (DR0363)**

Poly Shuttles (DR0363), 125 gallon poly shuttle tank, metered pump. Notes: Item Location: Chaseburg, WI 54621 Equipment Sold "AS IS, WHERE IS": All equipment/property is sold "AS IS, WHERE IS" with no warranty or guarantees, expressed or implied, No operational assessments have been made by DPA Auctions on this item, it has been photographed ONLY.



---

**#196 - Poly Shuttles (DR0364)**

Poly Shuttles (DR0364), 250 gallon poly shuttle tank, 12 volt pump. Notes: Item Location: Chaseburg, WI 54621 Equipment Sold "AS IS, WHERE IS": All equipment/property is sold "AS IS, WHERE IS" with no warranty or guarantees, expressed or implied, No operational assessments have been made by DPA Auctions on this item, it has been photographed ONLY.



---

**#197 - Poly Shuttles (DR0365)**

Poly Shuttles (DR0365), (2) 220 gallon poly shuttle tanks, both have Flowserve 12 volt pump. Notes: Item Location: Chaseburg, WI 54621 Equipment Sold "AS IS, WHERE IS": All equipment/property is sold "AS IS, WHERE IS" with no warranty or guarantees, expressed or implied, No operational assessments have been made by DPA Auctions on this item, it has been photographed ONLY.



### #198 - Poly Shuttles (DR0366)

Poly Shuttles (DR0366), (2) poly shuttle tanks, 220 & 150 gallon, both have Flowserve 12 volt pump. Notes: Item Location: Chaseburg, WI 54621 Equipment Sold "AS IS, WHERE IS": All equipment/property is sold "AS IS, WHERE IS" with no warranty or guarantees, expressed or implied, No operational assessments have been made by DPA Auctions on this item, it has been photographed ONLY.



### #199 - Poly Shuttles (DR0367)

Poly Shuttles (DR0367), (2) poly shuttle tanks, 220 & 150 gallon, both have Flowserve 12 volt pump. Notes: Item Location: Chaseburg, WI 54621 Equipment Sold "AS IS, WHERE IS": All equipment/property is sold "AS IS, WHERE IS" with no warranty or guarantees, expressed or implied, No operational assessments have been made by DPA Auctions on this item, it has been photographed ONLY.



### #200 - Poly Shuttles (DR0368)

Poly Shuttles (DR0368), (2) 150 gallon poly shuttle tanks, 1 has Flowserve 12 volt pump. Notes: Item Location: Chaseburg, WI 54621 Equipment Sold "AS IS, WHERE IS": All equipment/property is sold "AS IS, WHERE IS" with no warranty or guarantees, expressed or implied, No operational assessments have been made by DPA Auctions on this item, it has been photographed ONLY.



### #201 - Poly Shuttles (DR0369)

Poly Shuttles (DR0369), (2) 220 gallon poly shuttle tanks, both have Flowserve 12 volt pump. Notes: Item Location: Chaseburg, WI 54621 Equipment Sold "AS IS, WHERE IS": All equipment/property is sold "AS IS, WHERE IS" with no warranty or guarantees, expressed or implied, No operational assessments have been made by DPA Auctions on this item, it has been photographed ONLY.



### #202 - Foam Tanks (DR0370)

Foam Tanks (DR0370), (2) Richway poly foam marker tanks, Richway foam control box. Notes: Item Location: Chaseburg, WI 54621 Equipment Sold "AS IS, WHERE IS": All equipment/property is sold "AS IS, WHERE IS" with no warranty or guarantees, expressed or implied, No operational assessments have been made by DPA Auctions on this item, it has been photographed ONLY.



### #203 - Meters (DR0371)

Meters (DR0371), (4) Tokeim liquid meters, (2) electric motors w/2" pumps. Notes: Item Location: Chaseburg, WI 54621 Equipment Sold "AS IS, WHERE IS": All equipment/property is sold "AS IS, WHERE IS" with no warranty or guarantees, expressed or implied, No operational assessments have been made by DPA Auctions on this item, it has been photographed ONLY.



### #204 - Cylinders (DR0372)

Cylinders (DR0372), (4) hydraulic cylinders. Notes: Item Location: Chaseburg, WI 54621 Equipment Sold "AS IS, WHERE IS": All equipment/property is sold "AS IS, WHERE IS" with no warranty or guarantees, expressed or implied, No operational assessments have been made by DPA Auctions on this item, it has been photographed ONLY.



### #205 - Orbit Motors (DR0373)

Orbit Motors (DR0373), (10) hydraulic orbit motors, (6) PTO pumps. Notes: Item Location: Chaseburg, WI 54621 Equipment Sold "AS IS, WHERE IS": All equipment/property is sold "AS IS, WHERE IS" with no warranty or guarantees, expressed or implied, No operational assessments have been made by DPA Auctions on this item, it has been photographed ONLY.



### #206 - Truck Tires (DR0374)

Truck Tires (DR0374), (7) 22.5 truck tires. Notes: Item Location: Chaseburg, WI 54621 Equipment Sold "AS IS, WHERE IS": All equipment/property is sold "AS IS, WHERE IS" with no warranty or guarantees, expressed or implied, No operational assessments have been made by DPA Auctions on this item, it has been photographed ONLY.



### #207 - Floater Tires (DR0375)

Floater Tires (DR0375), 1-66X43.00-25 float tire, 2-48X31.00-20 float tires. Notes: Item Location: Chaseburg, WI 54621 Equipment Sold "AS IS, WHERE IS": All equipment/property is sold "AS IS, WHERE IS" with no warranty or guarantees, expressed or implied, No operational assessments have been made by DPA Auctions on this item, it has been photographed ONLY.



---

### #208 - NEW Floats (DR0376)

NEW Floats (DR0376), (2) NEW 48X 31.00-20 front floater tires, never mounted. Notes: Item Location: Chaseburg, WI 54621 Equipment Sold "AS IS, WHERE IS": All equipment/property is sold "AS IS, WHERE IS" with no warranty or guarantees, expressed or implied, No operational assessments have been made by DPA Auctions on this item, it has been photographed ONLY.



---

### #209 - LP Tanks (DR0377)

LP Tanks (DR0377), (2) 250 gallon LP tanks, one has been burned other has pin hole leaks in rust spot. Notes: Item Location: Chaseburg, WI 54621 Equipment Sold "AS IS, WHERE IS": All equipment/property is sold "AS IS, WHERE IS" with no warranty or guarantees, expressed or implied, No operational assessments have been made by DPA Auctions on this item, it has been photographed ONLY.



---

### #210 - LP Tanks (DR0378)

LP Tanks (DR0378), (2) 500 gallon LP tanks, one has dent, other has pin hole leak in weld. Notes: Item Location: Chaseburg, WI 54621 Equipment Sold "AS IS, WHERE IS": All equipment/property is sold "AS IS, WHERE IS" with no warranty or guarantees, expressed or implied, No operational assessments have been made by DPA Auctions on this item, it has been photographed ONLY.



---

### #211 - LP Tanks (DR0379)

LP Tanks (DR0379), 500 gallon LP tank, no data tag. Notes: Item Location: Chaseburg, WI 54621 Equipment Sold "AS IS, WHERE IS": All equipment/property is sold "AS IS, WHERE IS" with no warranty or guarantees, expressed or implied, No operational assessments have been made by DPA Auctions on this item, it has been photographed ONLY.



---

### #212 - Falcon Controller (DR0420)

Falcon Controller (DR0420), Falcon II controller, keyboard, 1-display monitor, receiver, and power box. Notes: Only 1 display sells with this. Item Location: Owatonna, MN 55060 Equipment Sold "AS IS, WHERE IS": All equipment/property is sold "AS IS, WHERE IS" with no warranty or guarantees, expressed or implied, No operational assessments have been made by DPA Auctions on this item, it has been photographed ONLY.



---

### #213 - Falcon Controller (DR0421)

Falcon Controller (DR0421), Falcon II controller, keyboard, 1-display monitor, receiver, and power box, wiring harness. Notes: Item Location: Owatonna, MN 55060 Equipment Sold "AS IS, WHERE IS": All equipment/property is sold "AS IS, WHERE IS" with no warranty or guarantees, expressed or implied, No operational assessments have been made by DPA Auctions on this item, it has been photographed ONLY.



---

### #214 - Falcon Controller (DR0422)

Falcon Controller (DR0422), Falcon II controller, keyboard, 1-display monitor, receiver, and power box, wiring. Notes: Item Location: Owatonna, MN 55060 Equipment Sold "AS IS, WHERE IS": All equipment/property is sold "AS IS, WHERE IS" with no warranty or guarantees, expressed or implied, No operational assessments have been made by DPA Auctions on this item, it has been photographed ONLY.



---

### #215 - Falcon Controller (DR0423)

Falcon Controller (DR0423), Falcon II controller, keyboard, 1-display monitor, receiver, and power box, extra NEW parts. Notes: Item Location: Owatonna, MN 55060 Equipment Sold "AS IS, WHERE IS": All equipment/property is sold "AS IS, WHERE IS" with no warranty or guarantees, expressed or implied, No operational assessments have been made by DPA Auctions on this item, it has been photographed ONLY.



---

### #216 - Falcon Controller (DR0424)

Falcon Controller (DR0424), Falcon II controller, keyboard, 1-display monitor, receiver, and power box. Notes: Item Location: Owatonna, MN 55060 Equipment Sold "AS IS, WHERE IS": All equipment/property is sold "AS IS, WHERE IS" with no warranty or guarantees, expressed or implied, No operational assessments have been made by DPA Auctions on this item, it has been photographed ONLY.





---

**#217 - Light Bar(DR0425)**

Light Bar(DR0425), digital light bar, Ag Technologies receiver. Notes: Item Location: Owatonna, MN 55060 Equipment Sold "AS IS, WHERE IS": All equipment/property is sold "AS IS, WHERE IS" with no warranty or guarantees, expressed or implied, No operational assessments have been made by DPA Auctions on this item, it has been photographed ONLY.



---

**#218 - 1975 Allis- Chalmers 840 Payloader (KMK634)**

1975 Allis- Chalmers 840 Payloader (KMK634), model # 1095175, Perkins 4 cylinder diesel engine, rebuilt approx. 6 years ago, 3 speed shuttle shift transmission, enclosed cab, heat, joystick loader control, rear weights, 94" wide bucket, 20.00 - 20 tires, shows hour meter does not work hours. Notes: Non runner. Will assist with loading. Item Location: Oxford, IA 52322 Equipment Sold "AS IS, WHERE IS": All equipment/property is sold "AS IS, WHERE IS" with no warranty or guarantees, expressed or implied, No operational assessments have been made by DPA Auctions on this item, it has been photographed ONLY.



---

**#219 - 2002 Chrysler Town & Country Van (PZ0527)**

2002 Chrysler Town & Country Van (PZ0527), 3.8L V6 gas engine, automatic transmission, air conditioning, heat, Am/Fm CD & Cassette stereo, cruise control, power windows & locks, power drivers side seat, leather seats, heated seats, 215/65R16 tires, shows 225,120 miles. Notes: Item Location: Fremont, NE 68025 Equipment Sold "AS IS, WHERE IS": All equipment/property is sold "AS IS, WHERE IS" with no warranty or guarantees, expressed or implied, No operational assessments have been made by DPA Auctions on this item, it has been photographed ONLY.

