

Auction catalog

Title	Online Auction - November 6, 2018 10AM Central
Description	The following line of Fertilizer, Farm Implement, Truck, Trailer & Construction Equipment will be sold online with the bidding ending on November 6, 2018. Location of the equipment is given. Bidding within the last minute before the closing of a lot will extend the bidding time by an additional minute. Be prepared to bid accordingly. For more information, contact Del Peterson & Associates: 419 West Judy Drive Fremont NE, 68025 Phone: 800-492-9090 or 402-721-4388 Fax: 402-721-4583 E-mail: auction@delpeterson.com
Date	Tue, Nov 6, 2018
Starts at	10:00 AM
Address	PO Box 654, Fremont, NE 68026 USA
Categories	

#1 - Running Gear (PZ0306)

Running Gear (PZ0306), 4 wheel auto steer running gear, 11L-15 flotation tires, side boards. Notes: Item Location: Lowden, IA 52255 Equipment Sold "AS IS, WHERE IS": All equipment/property is sold "AS IS, WHERE IS" with no warranty or guarantees, expressed or implied, No operational assessments have been made by DPA Auctions on this item, it has been photographed ONLY.



#2 - Running Gear (PZ0307)

Running Gear (PZ0307), 4 wheel auto steer running gear, 11L-15 flotation tires, side boards. Notes: Item Location: Lowden, IA 52255 Equipment Sold "AS IS, WHERE IS": All equipment/property is sold "AS IS, WHERE IS" with no warranty or guarantees, expressed or implied, No operational assessments have been made by DPA Auctions on this item, it has been photographed ONLY.



#3 - Running Gear (PZ0308)

Running Gear (PZ0308), 4 wheel auto steer running gear, 11L-15 flotation tires, side boards. Notes: Item Location: Lowden, IA 52255 Equipment Sold "AS IS, WHERE IS": All equipment/property is sold "AS IS, WHERE IS" with no warranty or guarantees, expressed or implied, No operational assessments have been made by DPA Auctions on this item, it has been photographed ONLY.



#4 - Running Gear (PZ0309)

Running Gear (PZ0309), 4 wheel auto steer running gear, 11L-15 flotation tires, side boards. Notes: Item Location: Lowden, IA 52255 Equipment Sold "AS IS, WHERE IS": All equipment/property is sold "AS IS, WHERE IS" with no warranty or guarantees, expressed or implied, No operational assessments have been made by DPA Auctions on this item, it has been photographed ONLY.



#5 - Flotation Tires (PZ0332)

Flotation Tires (PZ0332), 4 - 14L-16.1 SL flotation tires & rims. Notes: Item Location: Allison, IA 50602 Equipment Sold "AS IS, WHERE IS": All equipment/property is sold "AS IS, WHERE IS" with no warranty or guarantees, expressed or implied, No operational assessments have been made by DPA Auctions on this item, it has been photographed ONLY.



#6 - Flotation Tires (PZ0333)

Flotation Tires (PZ0333), 4 - 14L-16.1 SL flotation tires & rims. Notes: Item Location: Allison, IA 50602 Equipment Sold "AS IS, WHERE IS": All equipment/property is sold "AS IS, WHERE IS" with no warranty or guarantees, expressed or implied, No operational assessments have been made by DPA Auctions on this item, it has been photographed ONLY.



#7 - Flotation Tires (PZ0334)

Flotation Tires (PZ0334), 4 - 14L-16.1 SL flotation tires & rims. Notes: Item Location: Allison, IA 50602 Equipment Sold "AS IS, WHERE IS": All equipment/property is sold "AS IS, WHERE IS" with no warranty or guarantees, expressed or implied, No operational assessments have been made by DPA Auctions on this item, it has been photographed ONLY.



#8 - Flotation Tires (PZ0335)

Flotation Tires (PZ0335), 4 - 14L-16.1 SL flotation tires & rims. Notes: Item Location: Allison, IA 50602 Equipment Sold "AS IS, WHERE IS": All equipment/property is sold "AS IS, WHERE IS" with no warranty or guarantees, expressed or implied, No operational assessments have been made by DPA Auctions on this item, it has been photographed ONLY.



#9 - Flotation Tires (PZ0336)

Flotation Tires (PZ0336), 4 - 14L-16.1 SL flotation tires & rims. Notes: Item Location: Allison, IA 50602 Equipment Sold "AS IS, WHERE IS": All equipment/property is sold "AS IS, WHERE IS" with no warranty or guarantees, expressed or implied, No operational assessments have been made by DPA Auctions on this item, it has been photographed ONLY.



#10 - Precision Stainless Steel Shuttle Tank (PZ0405)

Precision Stainless Steel Shuttle Tank (PZ0405), 2008 Precision Tank & Equipment 250 gallon stainless steel shuttle tank. Notes: Item Location: Winthrop, IA 50682 Equipment Sold "AS IS, WHERE IS": All equipment/property is sold "AS IS, WHERE IS" with no warranty or guarantees, expressed or implied, No operational assessments have been made by DPA Auctions on this item, it has been photographed ONLY.



#11 - Precision Stainless Steel Shuttle Tank (PZ0406)

Precision Stainless Steel Shuttle Tank (PZ0406), 2007 Precision Tank & Equipment 250 gallon stainless steel shuttle tank. Notes: Item Location: Winthrop, IA 50682 Equipment Sold "AS IS, WHERE IS": All equipment/property is sold "AS IS, WHERE IS" with no warranty or guarantees, expressed or implied, No operational assessments have been made by DPA Auctions on this item, it has been photographed ONLY.



#12 - Precision Stainless Steel Shuttle Tank (PZ0407)

Precision Stainless Steel Shuttle Tank (PZ0407), 2001 Precision Tank & Equipment 250 gallon stainless steel shuttle tank. Notes: Item Location: Winthrop, IA 50682 Equipment Sold "AS IS, WHERE IS": All equipment/property is sold "AS IS, WHERE IS" with no warranty or guarantees, expressed or implied, No operational assessments have been made by DPA Auctions on this item, it has been photographed ONLY.



#13 - Precision Stainless Steel Shuttle Tank (PZ0408)

Precision Stainless Steel Shuttle Tank (PZ0408), Precision Tank & Equipment 250 gallon stainless steel shuttle tank. Notes: Item Location: Winthrop, IA 50682 Equipment Sold "AS IS, WHERE IS": All equipment/property is sold "AS IS, WHERE IS" with no warranty or guarantees, expressed or implied, No operational assessments have been made by DPA Auctions on this item, it has been photographed ONLY.



#14 - Frontier Blade (PZ0288)

Frontier Blade (PZ0288), Frontier RB2072 3-point blade. Notes: Item Location: Hazleton, IA 50641 Equipment Sold "AS IS, WHERE IS": All equipment/property is sold "AS IS, WHERE IS" with no warranty or guarantees, expressed or implied, No operational assessments have been made by DPA Auctions on this item, it has been photographed ONLY.



#15 - Power Washer (PZ0290)

Power Washer (PZ0290), 500 gallon tank, Honda 5.5 gas engine, wand and hose. Notes: Item Location: Hazleton, IA 50641 Equipment Sold "AS IS, WHERE IS": All equipment/property is sold "AS IS, WHERE IS" with no warranty or guarantees, expressed or implied, No operational assessments have been made by DPA Auctions on this item, it has been photographed ONLY.



#16 - Nissan 20 Forklift (NP7185)

Nissan 20 Forklift (NP7185), Model PH02A20, LP gas, shuttle shift, tilt, forks, 3,000lb capacity, 7.00-12 front tires, 6.00-9 rear tires. Notes: LP tank DOES NOT SELL with this forklift. Needs a new flywheel, does have a NEW starter. Item Location: Beloit, KS 67420 Equipment Sold "AS IS, WHERE IS": All equipment/property is sold "AS IS, WHERE IS" with no warranty or guarantees, expressed or implied, No operational assessments have been made by DPA Auctions on this item, it has been photographed ONLY.



#17 - Coats Tire Machine (NP7184)

Coats Tire Machine (NP7184), Model 4050A. Notes: Item Location: Beloit, KS 67420 Equipment Sold "AS IS, WHERE IS": All equipment/property is sold "AS IS, WHERE IS" with no warranty or guarantees, expressed or implied, No operational assessments have been made by DPA Auctions on this item, it has been photographed ONLY.



#18 - Industrial Sized Air Compressor (NP7188)

Industrial Sized Air Compressor (NP7188). Notes: Item Location: Beloit, KS 67420 Equipment Sold "AS IS, WHERE IS": All equipment/property is sold "AS IS, WHERE IS" with no warranty or guarantees, expressed or implied, No operational assessments have been made by DPA Auctions on this item, it has been photographed ONLY.



#19 - 1989 International 9370 (CP539 Unit 4522)

1989 International 9370 (CP539 Unit 4522), Cummins diesel engine, 9 speed transmission, tandem axle full screw, 3200 gallon crown poly liquid tank, Honda gas engine, 3" outlet, 2" recirculate, cruise control, engine brake, 22.5 tires. Notes: Item Location: Treynor, IA 51575 Equipment Sold "AS IS, WHERE IS": All equipment/property is sold "AS IS, WHERE IS" with no warranty or guarantees, expressed or implied, No operational assessments have been made by DPA Auctions on this item, it has been photographed ONLY.



#20 - 1994 International 8100 (CP538 Unit 4490)

1994 International 8100 (CP538 Unit 4490), Cummins diesel engine, 10 speed transmission, tandem axle full screw, rear air lift tag axle, Simonsen 18 ton hydraulic stainless steel dry tender box, 3 compartment, side shooter auger, shows 203,701 miles. Notes: Item Location: Treynor, IA 51575 Equipment Sold "AS IS, WHERE IS": All equipment/property is sold "AS IS, WHERE IS" with no warranty or guarantees, expressed or implied, No operational assessments have been made by DPA Auctions on this item, it has been photographed ONLY.



#21 - 1996 Tyler Titan 3275 Liquid Floater (PZ0289, Unit 1075)

1996 Tyler Titan 3275 Liquid Floater (PZ0289, Unit 1075), Cummins diesel engine, Allison automatic transmission, air conditioning, heat, Am/Fm cassette radio, 1800 gallon stainless steel liquid system, 75' boom, foam marker, stainless steel foam marker tank, top poly rinse tank, Firestone 66x43.00-25 tires, Raven SCS460 monitor, lightbar, shows 39,930 miles. Notes: Item Location: Hazleton, IA 50641 Equipment Sold "AS IS, WHERE IS": All equipment/property is sold "AS IS, WHERE IS" with no warranty or guarantees, expressed or implied, No operational assessments have been made by DPA Auctions on this item, it has been photographed ONLY.



#22 - 2002 RoGator 854 Sprayer (PZ0295, Unit T367)

2002 RoGator 854 Sprayer (PZ0295, Unit T367), Cummins B5.9-A diesel engine, hydrostatic transmission, air conditioning, heat, Am/Fm radio, 1000 gallon stainless steel liquid system, 90' boom, foam marker, stainless steel foam marker tank, Michelin 380/90R46 tires, Raven SCS460 monitor, Trimble lightbar, EZ-Steer, shows 3588 hours. Notes: Item Location: Alburnett, IA 52202 Equipment Sold "AS IS, WHERE IS": All equipment/property is sold "AS IS, WHERE IS" with no warranty or guarantees, expressed or implied, No operational assessments have been made by DPA Auctions on this item, it has been photographed ONLY.



#23 - 2008 Chevrolet 1500 Extended Cab Pickup (PZ0296, Unit 1312)

2008 Chevrolet 1500 Extended Cab Pickup (PZ0296, Unit 1312), 4x4, gas engine, automatic transmission, air conditioning, heat, Am/Fm CD stereo, power windows & locks, power drivers seat, P265/70R17 tires, shows 261,257 miles. Notes: Engine noise. Item Location: Alburnett, IA 52202 Equipment Sold "AS IS, WHERE IS": All equipment/property is sold "AS IS, WHERE IS" with no warranty or guarantees, expressed or implied, No operational assessments have been made by DPA Auctions on this item, it has been photographed ONLY.



#24 - 2004 Chevrolet 2500HD Pickup (PZ0304, Unit T410)

2004 Chevrolet 2500HD Pickup (PZ0304, Unit T410), 4x4, gas engine, automatic transmission, air conditioning, heat, Am/Fm radio, cruise control, running boards, Western snow plow with controls, LT265/75R16 tires, shows 161,312 miles. Notes: Item Location: Miles, IA 52064 Equipment Sold "AS IS, WHERE IS": All equipment/property is sold "AS IS, WHERE IS" with no warranty or guarantees, expressed or implied, No operational assessments have been made by DPA Auctions on this item, it has been photographed ONLY.



#25 - 2010 B-B Dry Tender Trailer (PZ0328, Unit 766)

2010 B-B Dry Tender Trailer (PZ0328, Unit 766), 2010 B-B dry tender trailer, Willmar 24 ton dry tender box, side discharge auger, Kubota diesel engine, electric start, roll over tarp, tandem axle, cheater axle, 255/70R22.5 tires, 235/75R17.5 cheater tires. Notes: Seal out of auger motor, engine needs tune up. Item Location: Chapin, IA 50427 Equipment Sold "AS IS, WHERE IS": All equipment/property is sold "AS IS, WHERE IS" with no warranty or guarantees, expressed or implied, No operational assessments have been made by DPA Auctions on this item, it has been photographed ONLY.



#26 - 2003 Timpte Grain Trailer (PZ0330, Unit 1831)

2003 Timpte Grain Trailer (PZ0330, Unit 1831), 2003 Timpte aluminum hopper bottom grain trailer, tandem axle, air ride suspension, roll over tarp, 11R22.5 tires, aluminum rims. Notes: Item Location: Chapin, IA 50427 Equipment Sold "AS IS, WHERE IS": All equipment/property is sold "AS IS, WHERE IS" with no warranty or guarantees, expressed or implied, No operational assessments have been made by DPA Auctions on this item, it has been photographed ONLY.



#27 - 2000 Volvo Truck (PZ0314, Unit 1026)

2000 Volvo Truck (PZ0314, Unit 1026), Cummins ISM diesel engine, Meritor RMX10-135C transmission, air conditioning, heat, Am/Fm cassette radio, power windows, engine brake, tandem axle, full screw, air ride suspension, 5th wheel, wet kit, 295/75R22.5 tires, shows 485,559 miles. Notes: A/C, heat issues, drive tires will be replaced with steel rims. Please call seller for more information. Item Location: Eldora, IA 50627 Equipment Sold "AS IS, WHERE IS": All equipment/property is sold "AS IS, WHERE IS" with no warranty or guarantees, expressed or implied, No operational assessments have been made by DPA Auctions on this item, it has been photographed ONLY.



#28 - DMI Uni-Seal'r (PZ0315)

DMI Uni-Seal'r (PZ0315), 15 - DMI uni-seal'rs. Notes: Item Location: Alden, IA 50006 Equipment Sold "AS IS, WHERE IS": All equipment/property is sold "AS IS, WHERE IS" with no warranty or guarantees, expressed or implied, No operational assessments have been made by DPA Auctions on this item, it has been photographed ONLY.



#29 - DMI Uni-Seal'r (PZ0316)

DMI Uni-Seal'r (PZ0316), 15 - DMI uni-seal'rs. Notes: Item Location: Alden, IA 50006 Equipment Sold "AS IS, WHERE IS": All equipment/property is sold "AS IS, WHERE IS" with no warranty or guarantees, expressed or implied, No operational assessments have been made by DPA Auctions on this item, it has been photographed ONLY.



#30 - Sealer Brackets (PZ0317)

Sealer Brackets (PZ0317), Approx. 20 sealer brackets. Notes: Item Location: Alden, IA 50006 Equipment Sold "AS IS, WHERE IS": All equipment/property is sold "AS IS, WHERE IS" with no warranty or guarantees, expressed or implied, No operational assessments have been made by DPA Auctions on this item, it has been photographed ONLY.



#31 - Yetter Coulters (PZ0318)

Yetter Coulters (PZ0318), Pallet of Yetter coulters, hubs. Notes: Item Location: Alden, IA 50006 Equipment Sold "AS IS, WHERE IS": All equipment/property is sold "AS IS, WHERE IS" with no warranty or guarantees, expressed or implied, No operational assessments have been made by DPA Auctions on this item, it has been photographed ONLY.



#32 - Ground Driven Pump (PZ0319)

Ground Driven Pump (PZ0319), John Blue model LM4955 ground driven pump, wheels. Notes: Item Location: Alden, IA 50006 Equipment Sold "AS IS, WHERE IS": All equipment/property is sold "AS IS, WHERE IS" with no warranty or guarantees, expressed or implied, No operational assessments have been made by DPA Auctions on this item, it has been photographed ONLY.



#33 - DMI Tool Bar (PZ0320, Unit A6413)

DMI Tool Bar (PZ0320, Unit A6413), DMI H2 27.5' 11 knife 3-point tool bar, coulters, single disc sealers, nitrolator, hydraulic wings, tow bar. Notes: Item Location: Ackley, IA 50601 Equipment Sold "AS IS, WHERE IS": All equipment/property is sold "AS IS, WHERE IS" with no warranty or guarantees, expressed or implied, No operational assessments have been made by DPA Auctions on this item, it has been photographed ONLY.



#34 - DMI Tool Bar (PZ0321, Unit A6410)

DMI Tool Bar (PZ0321, Unit A6410), DMI H2 17.5' 7 knife 3-point tool bar, coulters, single disc sealers, nitrolator, hydraulic wings, tow bar. Notes: Item Location: Ackley, IA 50601 Equipment Sold "AS IS, WHERE IS": All equipment/property is sold "AS IS, WHERE IS" with no warranty or guarantees, expressed or implied, No operational assessments have been made by DPA Auctions on this item, it has been photographed ONLY.



#35 - Ag Systems Running Gear (PZ0322)

Ag Systems Running Gear (PZ0322), Ag Systems 5th wheel running gear, no tires. Notes: Item Location: Ackley, IA 50601 Equipment Sold "AS IS, WHERE IS": All equipment/property is sold "AS IS, WHERE IS" with no warranty or guarantees, expressed or implied, No operational assessments have been made by DPA Auctions on this item, it has been photographed ONLY.



#36 - Ag Systems Running Gear (PZ0323)

Ag Systems Running Gear (PZ0323), Ag Systems 5th wheel running gear, 11L-15 flotation tires. Notes: Item Location: Ackley, IA 50601 Equipment Sold "AS IS, WHERE IS": All equipment/property is sold "AS IS, WHERE IS" with no warranty or guarantees, expressed or implied, No operational assessments have been made by DPA Auctions on this item, it has been photographed ONLY.



#37 - NH3 Applicator (PZ0380)

NH3 Applicator (PZ0380), 500 gallon 5 knife NH3 applicator, poly water tank, 11L-15 flotation tires. Notes: Item Location: Charles City, IA 50616 Equipment Sold "AS IS, WHERE IS": All equipment/property is sold "AS IS, WHERE IS" with no warranty or guarantees, expressed or implied, No operational assessments have been made by DPA Auctions on this item, it has been photographed ONLY.



#38 - Hyster Forklift (PZ0390, Unit 1491)

Hyster Forklift (PZ0390, Unit 1491), Hyster model H60XM forklift, LP gas engine, shuttle shift transmission, forks, canopy, lights, side shift, 28x9-15 front tires, 6.50x10 rear tires. Notes: Hydraulics are getting weak, LP tank NOT included. Item Location: Garner, IA 50438 Equipment Sold "AS IS, WHERE IS": All equipment/property is sold "AS IS, WHERE IS" with no warranty or guarantees, expressed or implied, No operational assessments have been made by DPA Auctions on this item, it has been photographed ONLY.



#39 - 2005 John Deere 4920 Sprayer (PZ0291, Unit 1084)

2005 John Deere 4920 Sprayer (PZ0291, Unit 1084), John Deere diesel engine (S/N RG6081H263269), hydrostatic transmission, air conditioning, heat, Am/Fm cassette radio, 1200 gallon stainless steel liquid system, 100' boom, foam marker, poly foam marker tank, stainless steel chemical inductor, Firestone 380/105R50 tires, StarFire iTC globe, John Deere monitor, John Deere brown box, 4181 run hours. Notes: Full service has been done to this machine in April. Please contact seller for all details. Item Location: Sumner, IA 50674 Equipment Sold "AS IS, WHERE IS": All equipment/property is sold "AS IS, WHERE IS" with no warranty or guarantees, expressed or implied, No operational assessments have been made by DPA Auctions on this item, it has been photographed ONLY.



#40 - Tractor Tires (PZ0381)

Tractor Tires (PZ0381), 2 - Good Year 18.4R38 tires and rims. Notes: Item Location: Charles City, IA 50616 Equipment Sold "AS IS, WHERE IS": All equipment/property is sold "AS IS, WHERE IS" with no warranty or guarantees, expressed or implied, No operational assessments have been made by DPA Auctions on this item, it has been photographed ONLY.



#41 - John Deere Liquid System (PZ0389)

John Deere Liquid System (PZ0389), John Deere 1200 gallon stainless steel liquid system, 120' boom, foam marker, poly foam marker tank, stainless steel chemical inductor. Notes: Item Location: Garner, IA 50438 Equipment Sold "AS IS, WHERE IS": All equipment/property is sold "AS IS, WHERE IS" with no warranty or guarantees, expressed or implied, No operational assessments have been made by DPA Auctions on this item, it has been photographed ONLY.



#42 - Hyster Forklift (PZ0313)

Hyster Forklift (PZ0313), Hyster Forklift, LP gas engine, shuttle shift transmission, forks, canopy, lights, shows 22,735 hours. Notes: Steering broke, NO LP tank. Please call seller for further information. Item Location: Grundy Center, IA 50638 Equipment Sold "AS IS, WHERE IS": All equipment/property is sold "AS IS, WHERE IS" with no warranty or guarantees, expressed or implied, No operational assessments have been made by DPA Auctions on this item, it has been photographed ONLY.



#43 - Case 60 Trencher (PZ0311, Unit T537)

Case 60 Trencher (PZ0311, Unit T537), Case 60 walk behind trencher, Honda 13 hp gas engine, controls. Notes: Item Location: Grundy Center, IA 50638 Equipment Sold "AS IS, WHERE IS": All equipment/property is sold "AS IS, WHERE IS" with no warranty or guarantees, expressed or implied, No operational assessments have been made by DPA Auctions on this item, it has been photographed ONLY.



#44 - Vermeer V-1150 Trencher (PZ0312, Unit 1301)

Vermeer V-1150 Trencher (PZ0312, Unit 1301), Vermeer V-1150 walk behind trencher, gas engine, controls. Notes: No hydraulics, New chain 1 year ago done by Vermeer. Item Location: Grundy Center, IA 50638 Equipment Sold "AS IS, WHERE IS": All equipment/property is sold "AS IS, WHERE IS" with no warranty or guarantees, expressed or implied, No operational assessments have been made by DPA Auctions on this item, it has been photographed ONLY.



#45 - Coats Tire Changer (PZ0310)

Coats Tire Changer (PZ0310), Coats 20-20 tire changer. Notes: Item Location: Grundy Center, IA 50638 Equipment Sold "AS IS, WHERE IS": All equipment/property is sold "AS IS, WHERE IS" with no warranty or guarantees, expressed or implied, No operational assessments have been made by DPA Auctions on this item, it has been photographed ONLY.



#46 - John Deere Liquid System (PZ0325)

John Deere Liquid System (PZ0325), John Deere 1200 gallon stainless steel liquid system, 120' boom, foam marker, poly foam marker tank, stainless steel chemical inductor, rebuilt pump last spring. Notes: Trailer is NOT included. Item Location: Hampton, IA 50441 Equipment Sold "AS IS, WHERE IS": All equipment/property is sold "AS IS, WHERE IS" with no warranty or guarantees, expressed or implied, No operational assessments have been made by DPA Auctions on this item, it has been photographed ONLY.



#47 - Meters (PZ0298)

Meters (PZ0298), 5 - Veeder - Root meter registers, Total Control Systems. Notes: Item Location: Maquoketa, IA 52060 Equipment Sold "AS IS, WHERE IS": All equipment/property is sold "AS IS, WHERE IS" with no warranty or guarantees, expressed or implied, No operational assessments have been made by DPA Auctions on this item, it has been photographed ONLY.



#48 - 2007 John Deere 4720 Sprayer (PZ0303, Unit T365)

2007 John Deere 4720 Sprayer (PZ0303, Unit T365), John Deere diesel engine, hydrostatic transmission, air conditioning, heat, Am/Fm radio, 800 gallon stainless steel liquid system, 90' boom, foam marker, poly foam marker tank, 8 front weights, Firestone IF 380/90R46 tires, StarFire iTC globe, Norac UC4 total control, John Deere monitor, John Deere brown box, shows 3937 hours. Notes: Right side boom sensor does not work. Please contact seller for more information. Item Location: Miles, IA 52064 Equipment Sold "AS IS, WHERE IS": All equipment/property is sold "AS IS, WHERE IS" with no warranty or guarantees, expressed or implied, No operational assessments have been made by DPA Auctions on this item, it has been photographed ONLY.



#49 - Pump/Motor (PZ0299)

Pump/Motor (PZ0299), Scot pump, Baldor 5 hp electric motor. Notes: Item Location: Maquoketa, IA 52060 Equipment Sold "AS IS, WHERE IS": All equipment/property is sold "AS IS, WHERE IS" with no warranty or guarantees, expressed or implied, No operational assessments have been made by DPA Auctions on this item, it has been photographed ONLY.



#50 - Pump/Motor (PZ0300)

Pump/Motor (PZ0300), Scot pump, Baldor 5 hp electric motor. Notes: Item Location: Maquoketa, IA 52060 Equipment Sold "AS IS, WHERE IS": All equipment/property is sold "AS IS, WHERE IS" with no warranty or guarantees, expressed or implied, No operational assessments have been made by DPA Auctions on this item, it has been photographed ONLY.



#51 - Pump/Motor (PZ0301)

Pump/Motor (PZ0301), MP pump, Baldor 3 hp electric motor. Notes: Item Location: Maquoketa, IA 52060 Equipment Sold "AS IS, WHERE IS": All equipment/property is sold "AS IS, WHERE IS" with no warranty or guarantees, expressed or implied, No operational assessments have been made by DPA Auctions on this item, it has been photographed ONLY.



#52 - Pump/Motor (PZ0302)

Pump/Motor (PZ0302), Scot pump, Baldor 5 hp electric motor. Notes: Item Location: Maquoketa, IA 52060 Equipment Sold "AS IS, WHERE IS": All equipment/property is sold "AS IS, WHERE IS" with no warranty or guarantees, expressed or implied, No operational assessments have been made by DPA Auctions on this item, it has been photographed ONLY.



#53 - Brent Weigh Wagon (PZ0331)

Brent Weigh Wagon (PZ0331), Brent weigh wagon, side discharge auger, single axle, Briggs & Stratton 18 hp electric start gas engine, all hydraulic, 12-16.5LT tires. Notes: Scale NOT operational. Please contact seller for more information. Item Location: Allison, IA 50602 Equipment Sold "AS IS, WHERE IS": All equipment/property is sold "AS IS, WHERE IS" with no warranty or guarantees, expressed or implied, No operational assessments have been made by DPA Auctions on this item, it has been photographed ONLY.



#54 - 1985 IHC Eagle Cabover Truck (PZ0387)

1985 IHC Eagle Cabover Truck (PZ0387), Cummins 855 diesel engine, 13 speed transmission, air conditioning, heat, Am/Fm cassette radio, sleeper, tandem axle, full screw, air ride suspension, Rockwell rear ends, 5th wheel, 11R24.5 tires, shows 564,660 miles. Notes: Rear end problems, does not move. Please call seller for more information. Item Location: Floyd, IA 50435 Equipment Sold "AS IS, WHERE IS": All equipment/property is sold "AS IS, WHERE IS" with no warranty or guarantees, expressed or implied, No operational assessments have been made by DPA Auctions on this item, it has been photographed ONLY.



#55 - 1997 Ford F Super Duty Wrecker (PZ0382)

1997 Ford F Super Duty Wrecker (PZ0382), Powerstroke Turbo diesel engine, 4 speed transmission with overdrive, air conditioning, heat, Am/Fm radio, cruise control, single axle, dual wheels, 1993 JERR-DAN single line wrecker, HP 3500 axle, self loading dolly system, Ramsey winch, LT235/85R16 tires, shows 141,221 miles. Notes: Injector glow plug issues, lift cylinder on wrecker leaks. Item Location: Floyd, IA 50435 Equipment Sold "AS IS, WHERE IS": All equipment/property is sold "AS IS, WHERE IS" with no warranty or guarantees, expressed or implied, No operational assessments have been made by DPA Auctions on this item, it has been photographed ONLY.



#56 - 2013 John Deere 4830 Sprayer (NP7196, Unit 69142)

2013 John Deere 4830 Sprayer (NP7196, Unit 69142), John Deere diesel engine, hydrostatic transmission, heat, air conditioning, Am/Fm radio, 1,000 gallon stainless steel liquid tank, 100' boom, 5-way nozzle bodies, stainless steel chemical inductor, 380/90R46 tires, StarFire 3000 receiver, John Deere GreenStar 3 monitor, shows 3,982 hours. Notes: Item Location: Clay Center, KS 67432 Equipment Sold "AS IS, WHERE IS": All equipment/property is sold "AS IS, WHERE IS" with no warranty or guarantees, expressed or implied, No operational assessments have been made by DPA Auctions on this item, it has been photographed ONLY.



#57 - NH3 Nurse Tank (NP7201)

NH3 Nurse Tank (NP7201), Quality Steel Corp. 1,000 gallon capacity, top front fill, NTIP No. 118436, data plate, Tank 223. Notes: Item Location: Clay Center, KS 67432 Equipment Sold "AS IS, WHERE IS": All equipment/property is sold "AS IS, WHERE IS" with no warranty or guarantees, expressed or implied, No operational assessments have been made by DPA Auctions on this item, it has been photographed ONLY.



#58 - NH3 Nurse Tank (NP7202, Unit 92158)

NH3 Nurse Tank (NP7202, Unit 92158), Quality Steel Corp. 1,000 gallon capacity, top front fill, NTIP No. 118064, data plate, Tank 256. Notes: Item Location: Clay Center, KS 67432 Equipment Sold "AS IS, WHERE IS": All equipment/property is sold "AS IS, WHERE IS" with no warranty or guarantees, expressed or implied, No operational assessments have been made by DPA Auctions on this item, it has been photographed ONLY.



#59 - NH3 Nurse Tank (NP7203, Unit 70728)

NH3 Nurse Tank (NP7203, Unit 70728), Master Tank & Welding 1,000 gallon capacity, top front fill, data plate, Tank JB558. Notes: Item Location: Clay Center, KS 67432 Equipment Sold "AS IS, WHERE IS": All equipment/property is sold "AS IS, WHERE IS" with no warranty or guarantees, expressed or implied, No operational assessments have been made by DPA Auctions on this item, it has been photographed ONLY.



#60 - NH3 Nurse Tank (NP7204, Unit 70731)

NH3 Nurse Tank (NP7204, Unit 70731), 1,000 gallon capacity, top front fill, NTIP No. 118003, data plate, Tank JB70. Notes: Item Location: Clay Center, KS 67432 Equipment Sold "AS IS, WHERE IS": All equipment/property is sold "AS IS, WHERE IS" with no warranty or guarantees, expressed or implied, No operational assessments have been made by DPA Auctions on this item, it has been photographed ONLY.



#61 - PT&E Vertical Liquid Tank (NP7197)

PT&E Vertical Liquid Tank (NP7197), approx. 2,200 gallon capacity, stainless steel, 3 leg stand. Notes: Item Location: Clay Center, KS 67432 Equipment Sold "AS IS, WHERE IS": All equipment/property is sold "AS IS, WHERE IS" with no warranty or guarantees, expressed or implied, No operational assessments have been made by DPA Auctions on this item, it has been photographed ONLY.



#62 - 2006 PT&E Vertical Liquid Tank (NP7198)

2006 PT&E Vertical Liquid Tank (NP7198), approx. 2,200 gallon capacity, stainless steel, 3 leg stand. Notes: Dent on top side. Item Location: Clay Center, KS 67432 Equipment Sold "AS IS, WHERE IS": All equipment/property is sold "AS IS, WHERE IS" with no warranty or guarantees, expressed or implied, No operational assessments have been made by DPA Auctions on this item, it has been photographed ONLY.



#63 - Vertical Liquid Tank (NP7199)

Vertical Liquid Tank (NP7199), approx. 2,200 gallon capacity, stainless steel, 3 leg stand. Notes: Item Location: Clay Center, KS 67432 Equipment Sold "AS IS, WHERE IS": All equipment/property is sold "AS IS, WHERE IS" with no warranty or guarantees, expressed or implied, No operational assessments have been made by DPA Auctions on this item, it has been photographed ONLY.



#64 - Vertical Liquid Tank (NP7200)

Vertical Liquid Tank (NP7200), approx. 2,200 gallon capacity, stainless steel, 3 leg stand. Notes: Item Location: Clay Center, KS 67432 Equipment Sold "AS IS, WHERE IS": All equipment/property is sold "AS IS, WHERE IS" with no warranty or guarantees, expressed or implied, No operational assessments have been made by DPA Auctions on this item, it has been photographed ONLY.



#65 - 2008 John Deere 4930 Sprayer (PZ0324, Unit 1067)

2008 John Deere 4930 Sprayer (PZ0324, Unit 1067), John Deere diesel engine (RG6090L028830), hydrostatic transmission, air conditioning, heat, Am/Fm CD stereo, 1200 gallon stainless steel liquid system, 120' boom, foam marker, poly foam marker tank, stainless steel chemical inductor, Firestone 380/105R50 tires, StarFire iTC globe, shows 5250 hours. Notes: John Deere monitor NOT included. Item Location: Aplington, IA 50604 Equipment Sold "AS IS, WHERE IS": All equipment/property is sold "AS IS, WHERE IS" with no warranty or guarantees, expressed or implied, No operational assessments have been made by DPA Auctions on this item, it has been photographed ONLY.



#66 - New Leader Insert (PZ0327)

New Leader Insert (PZ0327), New Leader MultiApplier-5 stainless steel insert. Notes: Item Location: Chapin, IA 50427 Equipment Sold "AS IS, WHERE IS": All equipment/property is sold "AS IS, WHERE IS" with no warranty or guarantees, expressed or implied, No operational assessments have been made by DPA Auctions on this item, it has been photographed ONLY.



#67 - Wylie Cone Bottom Liquid Tank (NP7205)

Wylie Cone Bottom Liquid Tank (NP7205), approx. 3,000 gallon capacity, metal stand, Tank 1. Notes: Straps shown in pictures DO NOT SELL with this lot. Item Location: Clay Center, KS 67432 Equipment Sold "AS IS, WHERE IS": All equipment/property is sold "AS IS, WHERE IS" with no warranty or guarantees, expressed or implied, No operational assessments have been made by DPA Auctions on this item, it has been photographed ONLY.



#68 - Wylie Cone Bottom Liquid Tank (NP7206)

Wylie Cone Bottom Liquid Tank (NP7206), approx. 3,000 gallon capacity, metal stand, Tank 2193. Notes: Straps shown in pictures DO NOT SELL with this lot. Item Location: Clay Center, KS 67432 Equipment Sold "AS IS, WHERE IS": All equipment/property is sold "AS IS, WHERE IS" with no warranty or guarantees, expressed or implied, No operational assessments have been made by DPA Auctions on this item, it has been photographed ONLY.



#69 - Seed Tender (NP7207)

Seed Tender (NP7207), tandem axle, side discharge auger, Honda GX160 5.5HP gas motor, battery, 7.50R16 tires. Notes: Item Location: Clay Center, KS 67432 Equipment Sold "AS IS, WHERE IS": All equipment/property is sold "AS IS, WHERE IS" with no warranty or guarantees, expressed or implied, No operational assessments have been made by DPA Auctions on this item, it has been photographed ONLY.



#70 - 1993 Volvo Dry Tender Truck (NP7195, Unit 12124)

1993 Volvo Dry Tender Truck (NP7195, Unit 12124), Cummins L10-310E diesel engine, Rockwell 9 speed transmission, heat, air conditioning, cruise, air ride cab, tandem axle, spring suspension, rear ratio 3.21, Simonsen SMC4816S 2 compartment dry tender box (S/N 1021716), hydraulic, rear discharge auger, roll tarp, all aluminum wheels, 295/75R22.5 tires, shows 662,257 miles. Notes: PLEASE ALLOW AT LEAST 60 DAYS FOR TITLE TRANSFER. Item Location: Clay Center, KS 67432 Equipment Sold "AS IS, WHERE IS": All equipment/property is sold "AS IS, WHERE IS" with no warranty or guarantees, expressed or implied, No operational assessments have been made by DPA Auctions on this item, it has been photographed ONLY.



#71 - 2014 Terra Gator TG8400 Dry Floater (NP7227)

2014 Terra Gator TG8400 Dry Floater (NP7227), Sisutronic 8.4L diesel engine, CVT transmission, heat, air conditioning, Am/Fm CD radio, air ride cab, Soilection Four Bin dry air flow system (6 bin box - 4 main product bins & 2 micro nutrients bins), S/N AGCA4B00EENS31117, 70' boom, 55 gallon stainless steel foam marker tank, electric roll tarp, Lincoln greaser, Goodyear 1050/50R32 rear tires (deep tread), Goodyear 750/50R26 rear tires (deep tread), Raven Viper Pro, lightbar, Slingshot Field Hub, shows 2,783 hours. Notes: New product fans 500 hours ago, New oil coolers on the back, chains redone in winter of 2017. Item Location: Lewis, KS 67552 Equipment Sold "AS IS, WHERE IS": All equipment/property is sold "AS IS, WHERE IS" with no warranty or guarantees, expressed or implied, No operational assessments have been made by DPA Auctions on this item, it has been photographed ONLY.



#72 - 1984 IHC 2375 Wrecker (PZ0385)

1984 IHC 2375 Wrecker (PZ0385), Cummins L10 diesel engine, 9 speed transmission, air conditioning, heat, Am/Fm radio cassette, tandem axle, full screw, Raco spring suspension, Challenger 5802/T25 axle lift wrecker (S/N T73510789), 1/4" deck, hydraulic down riggers with flipper feet, Ramsey winch, 11R22.5 front tires, 10.00R20 rear tires, Odometer does not work. Notes: Tilt cylinder leaks. Item Location: Floyd, IA 50435 Equipment Sold "AS IS, WHERE IS": All equipment/property is sold "AS IS, WHERE IS" with no warranty or guarantees, expressed or implied, No operational assessments have been made by DPA Auctions on this item, it has been photographed ONLY.



#73 - 1998 Dodge Ram 3500 Flatbed Truck (PZ0386)

1998 Dodge Ram 3500 Flatbed Truck (PZ0386), Cummins Turbo diesel engine, automatic transmission, air conditioning, heat, Am/Fm cassette radio, cruise control, power windows & locks, running boards, single axle, dual wheels, Omaha Standard 10' flatbed, LT215/85R16 tires, shows 199,422 miles. Notes: New reman transmission. Item Location: Floyd, IA 50435 Equipment Sold "AS IS, WHERE IS": All equipment/property is sold "AS IS, WHERE IS" with no warranty or guarantees, expressed or implied, No operational assessments have been made by DPA Auctions on this item, it has been photographed ONLY.



#74 - 1994 Dodge Ram 2500 Pickup (PZ0384)

1994 Dodge Ram 2500 Pickup (PZ0384), 4x4 V8 gas engine, automatic transmission, air conditioning, heat, Am/Fm radio, running boards, LT285/75R16 tires, shows 271,766 miles. Notes: New reman transmission approx. 4,000 miles ago. Item Location: Charles City, IA 50616 Equipment Sold "AS IS, WHERE IS": All equipment/property is sold "AS IS, WHERE IS" with no warranty or guarantees, expressed or implied, No operational assessments have been made by DPA Auctions on this item, it has been photographed ONLY.



#75 - 2006 Peterbilt 379 Day Cab Truck (NP7265)

2006 Peterbilt 379 Day Cab Truck (NP7265), 1999 Cummins N14 diesel engine (Pre-Emission), 10 speed transmission, heat, air conditioning, Am/Fm radio, tandem axle, air ride suspension, 5th wheel plate, wet kit, headache rack, dual exhaust, shows 771,000 miles. Notes: Motor miles are unknown but motor work has been done, contact seller for more details. Item Location: Monona, IA 52159 Equipment Sold "AS IS, WHERE IS": All equipment/property is sold "AS IS, WHERE IS" with no warranty or guarantees, expressed or implied, No operational assessments have been made by DPA Auctions on this item, it has been photographed ONLY.



#76 - Spinner Controls And Raven Harness (PD948)

Spinner Controls And Raven Harness (PD948), New Leader spinner speed dial controls and miscellaneous, Raven adapter harnesses. Notes: Item Location: Freeport, IL 61032 Equipment Sold "AS IS, WHERE IS": All equipment/property is sold "AS IS, WHERE IS" with no warranty or guarantees, expressed or implied, No operational assessments have been made by DPA Auctions on this item, it has been photographed ONLY.



#77 - Raven Standard and Flo-Trol Control Valves (PD949)

Raven Standard and Flo-Trol Control Valves (PD949), removed from NH3 systems, hydraulic on/off valves also removed from NH3 systems, radar speed sensors. Notes: Item Location: Freeport, IL 61032 Equipment Sold "AS IS, WHERE IS": All equipment/property is sold "AS IS, WHERE IS" with no warranty or guarantees, expressed or implied, No operational assessments have been made by DPA Auctions on this item, it has been photographed ONLY.



#78 - Sunco Saber Tooth Floating Row Cleaners (PD944)

Sunco Saber Tooth Floating Row Cleaners (PD944), removed from 16 row DMI strip till NH3 applicator, 16 complete units, 2 extra brackets. Notes: Item Location: Freeport, IL 61032 Equipment Sold "AS IS, WHERE IS": All equipment/property is sold "AS IS, WHERE IS" with no warranty or guarantees, expressed or implied, No operational assessments have been made by DPA Auctions on this item, it has been photographed ONLY.



#79 - Markers (PD942)

Markers (PD942), removed from a 16 knife DMI strip till NH3 applicator. Notes: Item Location: Stockton, IL 61085 Equipment Sold "AS IS, WHERE IS": All equipment/property is sold "AS IS, WHERE IS" with no warranty or guarantees, expressed or implied, No operational assessments have been made by DPA Auctions on this item, it has been photographed ONLY.



#80 - Small Hydraulic Hoses (PD947)

Small Hydraulic Hoses (PD947), various sizes and lengths, flat face and JIC. Notes: Item Location: Freeport, IL 61032 Equipment Sold "AS IS, WHERE IS": All equipment/property is sold "AS IS, WHERE IS" with no warranty or guarantees, expressed or implied, No operational assessments have been made by DPA Auctions on this item, it has been photographed ONLY.



#81 - Miscellaneous Hydraulic Cylinders (PD938)

Miscellaneous Hydraulic Cylinders (PD938), 3 are from TerraGator cable boom systems for boom tension, 1 is rebuilt steering cylinder for a 4 wheel steer RoGator. Notes: Item Location: Ridott, IL 61067 Equipment Sold "AS IS, WHERE IS": All equipment/property is sold "AS IS, WHERE IS" with no warranty or guarantees, expressed or implied, No operational assessments have been made by DPA Auctions on this item, it has been photographed ONLY.



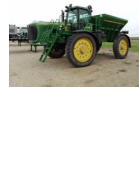
#82 - Fifth Wheel Plates (PD939)

Fifth Wheel Plates (PD939), 3 fifth wheel plates removed for semis to build straight truck tenders. Notes: Item Location: Ridott, IL 61067 Equipment Sold "AS IS, WHERE IS": All equipment/property is sold "AS IS, WHERE IS" with no warranty or guarantees, expressed or implied, No operational assessments have been made by DPA Auctions on this item, it has been photographed ONLY.



#83 - 2006 John Deere 4920 Dry Machine (PZ0326, Unit 1069)

2006 John Deere 4920 Dry Machine (PZ0326, Unit 1069), John Deere diesel engine (S/N RG6081H287800), hydrostatic transmission, air conditioning, heat, Am/Fm CD stereo, New Leader L3030 G4 - 11 stainless steel dry spreader box (S/N 128610), twin spinner, all hydraulic, StarFire iTC globe, John Deere brown box, shows 4550 hours. Notes: John Deere GS2 monitor NOT included, just brown box, back spinner motor hose broke. Item Location: Chapin, IA 50427 Equipment Sold "AS IS, WHERE IS": All equipment/property is sold "AS IS, WHERE IS" with no warranty or guarantees, expressed or implied, No operational assessments have been made by DPA Auctions on this item, it has been photographed ONLY.



#84 - 1982 Chevrolet C60 Wrecker (PZ0383)

1982 Chevrolet C60 Wrecker (PZ0383), 350 gas engine, 5 speed transmission, 2 speed rear end, heat, radio, single axle, Holmes 600 mechanical wrecker, tow hitch, 8.25-20 front tires, 9.00-20 rear tires, shows 35,951 miles. Notes: NO Brakes. Item Location: Floyd, IA 50435 Equipment Sold "AS IS, WHERE IS": All equipment/property is sold "AS IS, WHERE IS" with no warranty or guarantees, expressed or implied, No operational assessments have been made by DPA Auctions on this item, it has been photographed ONLY.



#85 - 2010 CaseIH Titan 4520 Dry Floater (NP7183, Unit 17518)

2010 CaseIH Titan 4520 Dry Floater (NP7183, Unit 17518), CaseIH diesel engine, Allison automatic transmission, heat, air conditioning, Am/Fm CD radio, buddy seat, CaseIH Flex-Air 810 dry air flow system (S/N Y9T026604), 70' boom, electric roll tarp, 1050/50R32 rear tires, 710/50R26.5 front tires, Raven SmarTrax 600ic lightbar, Raven Viper Pro monitor, shows 5,059 hours. Notes: Item Location: Smith Center, KS 66967 Equipment Sold "AS IS, WHERE IS": All equipment/property is sold "AS IS, WHERE IS" with no warranty or guarantees, expressed or implied, No operational assessments have been made by DPA Auctions on this item, it has been photographed ONLY.



#86 - Pneumatic Jack And Grinder (PD940)

Pneumatic Jack And Grinder (PD940), 220 volt pedestal grinder, grease pump, and turn table was used for painting lp grill cylinders. Notes: Item Location: Ridott, IL 61067 Equipment Sold "AS IS, WHERE IS": All equipment/property is sold "AS IS, WHERE IS" with no warranty or guarantees, expressed or implied, No operational assessments have been made by DPA Auctions on this item, it has been photographed ONLY.



#87 - Large Hydraulic Hoses (PD941)

Large Hydraulic Hoses (PD941), various lengths, 16 to 24, flat face and JIC. Notes: Item Location: Ridott, IL 61067 Equipment Sold "AS IS, WHERE IS": All equipment/property is sold "AS IS, WHERE IS" with no warranty or guarantees, expressed or implied, No operational assessments have been made by DPA Auctions on this item, it has been photographed ONLY.



#88 - 4 Pickup Truck Hitches (PD943)

4 Pickup Truck Hitches (PD943), removed from late model Chevy and GMC pickup trucks, 4 in the lot. Notes: Item Location: Stockton, IL 61085 Equipment Sold "AS IS, WHERE IS": All equipment/property is sold "AS IS, WHERE IS" with no warranty or guarantees, expressed or implied, No operational assessments have been made by DPA Auctions on this item, it has been photographed ONLY.



#89 - Air Flow Booms (PD950)

Air Flow Booms (PD950), stainless steel booms, pivot hinges and an oil cooler from an Airmax dryer spreader, both the left and right booms and hinges are here. Notes: Item Location: Stockton, IL 61085 Equipment Sold "AS IS, WHERE IS": All equipment/property is sold "AS IS, WHERE IS" with no warranty or guarantees, expressed or implied, No operational assessments have been made by DPA Auctions on this item, it has been photographed ONLY.



#90 - 2014 Terra Gator TG8400 Dry Floater (NP7231)

2014 Terra Gator TG8400 Dry Floater (NP7231), Sisutronic diesel engine, CVT transmission, heat, air conditioning, Am/Fm CD radio, air ride cab, Airmax Precision dry air flow system, 70' boom, electric roll tarp, Lincoln greaser, Goodyear 1000/50R25 rear tires (deep tread), Goodyear 48x31.00R20 front tires, Raven Viper Pro, lightbar, shows 3,795 hours. Notes: Item Location: Haviland, KS 67059 Equipment Sold "AS IS, WHERE IS": All equipment/property is sold "AS IS, WHERE IS" with no warranty or guarantees, expressed or implied, No operational assessments have been made by DPA Auctions on this item, it has been photographed ONLY.



#91 - Flotation Tires (PZ0404)

Flotation Tires (PZ0404), 4 - Firestone 23.1-26 flotation tires and rims. Notes: Item Location: Winthrop, IA 50682 Equipment Sold "AS IS, WHERE IS": All equipment/property is sold "AS IS, WHERE IS" with no warranty or guarantees, expressed or implied, No operational assessments have been made by DPA Auctions on this item, it has been photographed ONLY.



#92 - John Deere 4420 Combine (CP525)

John Deere 4420 Combine (CP525), John Deere turbo diesel engine, manual transmission, cab, heat, air conditioning, bin extension, hydraulic unloading auger, 23.1-26 front tires, shows 1,147 hours (owner believes there to be approx. 5,000 hours). Notes: Combine will need a new battery to start. Item Location: Afton, IA 50830 Equipment Sold "AS IS, WHERE IS": All equipment/property is sold "AS IS, WHERE IS" with no warranty or guarantees, expressed or implied, No operational assessments have been made by DPA Auctions on this item, it has been photographed ONLY.



#93 - 1978 Cat D3B LGP Dozer (CP535)

1978 Cat D3B LGP Dozer (CP535), diesel engine, power shift transmission, ROPS canopy, 6-way blade, peddle steer, shows 8,369 hours. Notes: 2012 rebuilt engine, transmission, undercarriage. Item Location: Afton, IA 50830 Equipment Sold "AS IS, WHERE IS": All equipment/property is sold "AS IS, WHERE IS" with no warranty or guarantees, expressed or implied, No operational assessments have been made by DPA Auctions on this item, it has been photographed ONLY.



#94 - 2002 John Deere 310G 4x4 Loader Backhoe (CP524)

2002 John Deere 310G 4x4 Loader Backhoe (CP524), JD4045D diesel engine, manual transmission, ROPS canopy, single stick controls, outriggers, 23" backhoe bucket, 7' loader bucket, shows 5,222 hours. Notes: Item Location: Afton, IA 50830 Equipment Sold "AS IS, WHERE IS": All equipment/property is sold "AS IS, WHERE IS" with no warranty or guarantees, expressed or implied, No operational assessments have been made by DPA Auctions on this item, it has been photographed ONLY.



#95 - Cat 416B 4x4 Loader Backhoe (CP526)

Cat 416B 4x4 Loader Backhoe (CP526), Cat 3054 diesel engine, shuttle shift transmission (transmission is OUT), Extend-A-Hoe, 27" backhoe bucket, single stick loader controls, outriggers, 19.5L-24 rear tires, shows 8,581 hours. Notes: Item Location: Afton, IA 50830 Equipment Sold "AS IS, WHERE IS": All equipment/property is sold "AS IS, WHERE IS" with no warranty or guarantees, expressed or implied, No operational assessments have been made by DPA Auctions on this item, it has been photographed ONLY.



#96 - LaPlant-Choate Cable Scraper (CP529)

LaPlant-Choate Cable Scraper (CP529), forced injection, push block, Michelin tires. Notes: Item Location: Afton, IA 50830 Equipment Sold "AS IS, WHERE IS": All equipment/property is sold "AS IS, WHERE IS" with no warranty or guarantees, expressed or implied, No operational assessments have been made by DPA Auctions on this item, it has been photographed ONLY.



#97 - LaPlant-Choate Cable Scraper (CP534)

LaPlant-Choate Cable Scraper (CP534), forced injection, push block. Notes: For PARTS only. Item Location: Afton, IA 50830 Equipment Sold "AS IS, WHERE IS": All equipment/property is sold "AS IS, WHERE IS" with no warranty or guarantees, expressed or implied, No operational assessments have been made by DPA Auctions on this item, it has been photographed ONLY.



#98 - Double Drum Sheeps Foot Roller (CP528)

Double Drum Sheeps Foot Roller (CP528), 48" double drum, some foot pegs missing. Notes: Item Location: Afton, IA 50830 Equipment Sold "AS IS, WHERE IS": All equipment/property is sold "AS IS, WHERE IS" with no warranty or guarantees, expressed or implied, No operational assessments have been made by DPA Auctions on this item, it has been photographed ONLY.



#99 - Gold Digger Soil Max Pro Tile Plow (CP523)

Gold Digger Soil Max Pro Tile Plow (CP523), portable, hydraulic lift, hydraulic plow with boot, flotation tires. Notes: Item Location: Afton, IA 50830 Equipment Sold "AS IS, WHERE IS": All equipment/property is sold "AS IS, WHERE IS" with no warranty or guarantees, expressed or implied, No operational assessments have been made by DPA Auctions on this item, it has been photographed ONLY.



#100 - 2004 Terra Gator 6103 Dry Floater (PZ0521)

2004 Terra Gator 6103 Dry Floater (PZ0521), John Deere diesel engine (S/N RG6081H237612), Terra Shift transmission, air conditioning, heat, Am/Fm radio, New Leader G4 stainless steel dry spreader box, twin spinner, all hydraulic, 66x43.00 - 25 tires fronts @ 50%, rears @ 25%, Raven Envizio Pro, Raven SCS661 monitor, shows 7278 hours. Notes: NEW belt over chain with less than 2 months on it and spinners have been replaced as well. Contact seller for more details. Item Location: Mansfield, OH 44906 Equipment Sold "AS IS, WHERE IS": All equipment/property is sold "AS IS, WHERE IS" with no warranty or guarantees, expressed or implied, No operational assessments have been made by DPA Auctions on this item, it has been photographed ONLY.



#101 - 2013 John Deere 4940 Sprayer (NP7272)

2013 John Deere 4940 Sprayer (NP7272), John Deere diesel engine, hydrostatic transmission, heat, air conditioning, Am/Fm radio, 1,200 gallon stainless steel liquid system, 120' boom, 15" spacing, 5-way nozzle bodies, stainless steel chemical inductor, 5-sensor boomtrac, left and right hand fence row nozzles, SF1 autosteer, 380/105R50 tires 30%-40%, Lincoln autolub automatic greaser, StarFire 3000 globe, 2630 monitor w/ all activations, shows 5,115 hours. Notes: 2630 screen has Autotrac, Circle trac, 11 section swath pro, Boomtrac activations, 3000 reciever has SF1 activation, section strainers, high flow pump, dual flowmeter, automatic solution control, new wing tilt cylinders and many new hoses. Item Location: Sublette, KS 67877 Equipment Sold "AS IS, WHERE IS": All equipment/property is sold "AS IS, WHERE IS" with no warranty or guarantees, expressed or implied. No operational assessments have been made by DPA Auctions on this item, it has been photographed ONLY.



#102 - DMI Tiger 5 Ripper (CP533)

DMI Tiger 5 Ripper (CP533), pull type, coulters, back cultivator, hydraulic lift, flotation tires. Notes: Item Location: Afton, IA 50830 Equipment Sold "AS IS, WHERE IS": All equipment/property is sold "AS IS, WHERE IS" with no warranty or guarantees, expressed or implied. No operational assessments have been made by DPA Auctions on this item, it has been photographed ONLY.



#103 - International 966 Tractor (CP530)

International 966 Tractor (CP530), turbo diesel engine, 8 speed forward transmission (T-A is Weak), 2 port hydraulics, 540/1000 PTO, 3 point hitch, 18.4-38 rear tires. Notes: Item Location: Afton, IA 50830 Equipment Sold "AS IS, WHERE IS": All equipment/property is sold "AS IS, WHERE IS" with no warranty or guarantees, expressed or implied. No operational assessments have been made by DPA Auctions on this item, it has been photographed ONLY.



#104 - 2007 Titan Gooseneck Trailer (CP537)

2007 Titan Gooseneck Trailer (CP537), 22' wood deck, tandem axle, ST235/85R16 tires, Hopkins breakaway system, dove tail, folding ramps. Notes: Item Location: Afton, IA 50830 Equipment Sold "AS IS, WHERE IS": All equipment/property is sold "AS IS, WHERE IS" with no warranty or guarantees, expressed or implied. No operational assessments have been made by DPA Auctions on this item, it has been photographed ONLY.



#105 - 1995 IHC Loral 2700 Easy-Rider Anniversary Edition Liquid Floater (NP7364)

1995 IHC Loral 2700 Easy-Rider Anniversary Edition Liquid Floater (NP7364), IHC diesel engine, automatic transmission, heat, air conditioning, Am/Fm radio, Liqui-Max 1,800 gallon stainless steel liquid system (S/N 6L087), Benson 65' boom, stainless steel foam marker tank, (2) poly side mount rinse tanks, chemical inductor, Defco pump, 66x43.00-25 rear tires, 48x25.00-20 front tires, Raven SCS 440 controller, shows 27,129 miles, shows 2,630 hours. Notes: Item Location: Falls City, NE 68355 Equipment Sold "AS IS, WHERE IS": All equipment/property is sold "AS IS, WHERE IS" with no warranty or guarantees, expressed or implied. No operational assessments have been made by DPA Auctions on this item, it has been photographed ONLY.



#106 - 1974 Speicher 7060 Tandem Traction Trencher (CP527)

1974 Speicher 7060 Tandem Traction Trencher (CP527), 471 Detroit deisel engine, hydrostatic transmission, all wheel drive, hydraulic digger, winch, 18.4-16.1 tires. Notes: Seller believes it will take \$5,000-\$6,000 in repairs to make it operational. Item Location: Afton, IA 50830 Equipment Sold "AS IS, WHERE IS": All equipment/property is sold "AS IS, WHERE IS" with no warranty or guarantees, expressed or implied. No operational assessments have been made by DPA Auctions on this item, it has been photographed ONLY.



#107 - 2002 Ford F-350 XLT Super Duty 4x4 Pickup (CP531)

2002 Ford F-350 XLT Super Duty 4x4 Pickup (CP531), crew cab, 7.3L Power Stroke diesel engine, automatic transmission (transmission is OUT), heat, air conditioning, cruise, power windows and locks, grill guard, running boards, LT265/75R16 tires. Notes: Transmission is out. Item Location: Afton, IA 50830 Equipment Sold "AS IS, WHERE IS": All equipment/property is sold "AS IS, WHERE IS" with no warranty or guarantees, expressed or implied. No operational assessments have been made by DPA Auctions on this item, it has been photographed ONLY.



#108 - 1993 Chevy K1500 Pickup (NP7273)

1993 Chevy K1500 Pickup (NP7273), TBI 454 engine, Turbo 400 transmission, heat, air conditioning, Am/Fm radio, power windows and locks, Solid axle conversion with roughly 7" lift, Ford Dana 60 front axle, Superlift leaf spring, cross over steering, 14 bolt rear end, 37x12.5R16.5 tires, shows 126,500 miles. Notes: Front drive shaft is broken and front pinion bearing needs replaced. Heat and A/C work but fan motor squeals in cab. Item Location: Sublette, KS 67877 Equipment Sold "AS IS, WHERE IS": All equipment/property is sold "AS IS, WHERE IS" with no warranty or guarantees, expressed or implied. No operational assessments have been made by DPA Auctions on this item, it has been photographed ONLY.



#109 - 1995 Dodge Ram 3500 Laramie SLT Pickup (CP532)

1995 Dodge Ram 3500 Laramie SLT Pickup (CP532), regular cab, V10 gas engine, automatic transmission, heat, air conditioning, cruise, power windows and locks, dually. Notes: Driver window isn't working, needs a battery, motor and transmission are weak. Item Location: Afton, IA 50830 Equipment Sold "AS IS, WHERE IS": All equipment/property is sold "AS IS, WHERE IS" with no warranty or guarantees, expressed or implied, No operational assessments have been made by DPA Auctions on this item, it has been photographed ONLY.



#110 - Lundell Dry Feeder (PZ0414)

Lundell Dry Feeder (PZ0414), Lundell plastics dry feeder, used to calibrate product, 110 plug converts to 36 volts, can get 24 or 12 volt adaptor from Lundell. Notes: Item Location: Marathon, IA 50565 Equipment Sold "AS IS, WHERE IS": All equipment/property is sold "AS IS, WHERE IS" with no warranty or guarantees, expressed or implied, No operational assessments have been made by DPA Auctions on this item, it has been photographed ONLY.



#111 - 1999 John Deere 4700 Sprayer (PZ0522)

1999 John Deere 4700 Sprayer (PZ0522), John Deere diesel engine, Hydrostatic transmission, air conditioning, heat, Am/Fm radio, 750 gallon stainless steel liquid system, 80' boom, 20" centers, triple nozzle bodies, foam marker, poly foam marker tank, chemical eductor, 120 gallon rinse tank, hydraulic tread adjustment, underframe shields, 10 front weights, fenders, 385/85R34 tires @ 75%, Ag Leader Integra with auto swath, lightbar, shows 5255 hours. Notes: Item Location: Monroeville, OH 44847 Equipment Sold "AS IS, WHERE IS": All equipment/property is sold "AS IS, WHERE IS" with no warranty or guarantees, expressed or implied, No operational assessments have been made by DPA Auctions on this item, it has been photographed ONLY.



#112 - Landoll 2210 Ripper (PZ0416)

Landoll 2210 Ripper (PZ0416), Landoll Weatherproofer 2210 ripper, 7 shank, walking tandems, flotation tires. Notes: Item Location: Marathon, IA 50565 Equipment Sold "AS IS, WHERE IS": All equipment/property is sold "AS IS, WHERE IS" with no warranty or guarantees, expressed or implied, No operational assessments have been made by DPA Auctions on this item, it has been photographed ONLY.



#113 - Liquid Applicator (PZ0417)

Liquid Applicator (PZ0417), 12 row liquid dribble applicator, 750 gallon poly liquid system, John Blue ground driven pump, fold out boom, 9 gallon poly water tank, 11L-15 flotation tires. Notes: Excellent condition. Item Location: Marathon, IA 50565 Equipment Sold "AS IS, WHERE IS": All equipment/property is sold "AS IS, WHERE IS" with no warranty or guarantees, expressed or implied, No operational assessments have been made by DPA Auctions on this item, it has been photographed ONLY.



#114 - Farmall Super M Tractor (PZ0411)

Farmall Super M Tractor (PZ0411), gas engine, narrow front. Notes: Ran great but needs starter. Item Location: Marathon, IA 50565 Equipment Sold "AS IS, WHERE IS": All equipment/property is sold "AS IS, WHERE IS" with no warranty or guarantees, expressed or implied, No operational assessments have been made by DPA Auctions on this item, it has been photographed ONLY.



#115 - Onan 70 EN Generator (PZ0409)

Onan 70 EN Generator (PZ0409), Onan 70 EN generator, Ford 460 gas powered engine, shows 372 hours. Remote capable, could be converted to LP. Notes: Runs Great! Item Location: Independence, IA 50644 Equipment Sold "AS IS, WHERE IS": All equipment/property is sold "AS IS, WHERE IS" with no warranty or guarantees, expressed or implied, No operational assessments have been made by DPA Auctions on this item, it has been photographed ONLY.



#116 - USC AT500 Seed Treater Box (PZ0415)

USC AT500 Seed Treater Box (PZ0415), USC AT500 seed treater box to box system, slide out atomizer, 4 plugs for accessories to run on auto feature, 4 blank static mixer, CT dry applicator, treater has about 3000 units of corn and beans through it. Notes: Excellent condition. Item Location: Marathon, IA 50565 Equipment Sold "AS IS, WHERE IS": All equipment/property is sold "AS IS, WHERE IS" with no warranty or guarantees, expressed or implied, No operational assessments have been made by DPA Auctions on this item, it has been photographed ONLY.



#117 - Speicher 6060 Tandem Traction Trencher (CP536)

Speicher 6060 Tandem Traction Trencher (CP536), Detroit 453 diesel engine, turbo kit, gear drive transmission, 6.5' digging wheel, Tulsa winch, 18.4-16.1 tires, shows 3,404 hours. Notes: Item Location: Afton, IA 50830 Equipment Sold "AS IS, WHERE IS": All equipment/property is sold "AS IS, WHERE IS" with no warranty or guarantees, expressed or implied, No operational assessments have been made by DPA Auctions on this item, it has been photographed ONLY.



#118 - 2011 RoGator 994 Sprayer (PZ0403)

2011 RoGator 994 Sprayer (PZ0403), Cat C7 Acert diesel engine, hydrostatic 7 range transmission, air conditioning, heat, Am/Fm CD stereo, crab steer, 900 gallon stainless steel liquid system, 60/80' boom, foam marker, stainless steel foam marker tank, top poly rinse tank, poly chemical inductor, 3" front reload valve, electric sump valve 3", fenders, Titan 480/80R42 tires (FL 60%, FR 70%, RL 70%, RR 50%), Raven SCS 5000 monitor, shows 2639 hours. Notes: Please allow 24 hr notice prior to pickup. Item Location: Clewiston, FL 33440 Equipment Sold "AS IS, WHERE IS": All equipment/property is sold "AS IS, WHERE IS" with no warranty or guarantees, expressed or implied, No operational assessments have been made by DPA Auctions on this item, it has been photographed ONLY.



#119 - 1998 IHC Loral 3000 Easy-Rider Liquid Floater (NP7363)

1998 IHC Loral 3000 Easy-Rider Liquid Floater (NP7363), IHC diesel engine, automatic transmission, heat, air conditioning, Am/Fm radio, cruise, Liqui-Max 1,800 gallon stainless steel liquid system (S/N 8L-123), Benson 85/55 retractable boom, stainless steel foam marker tank, (2) poly side mount rinse tanks, chemical inductor, Defco pump, 66x43.00-25 rear tires, 48x25.00-20 front tires, Raven SCS 660 controller, Raven sprayer control, shows 30,950 miles, shows 3,014 hours. Notes: Item Location: Falls City, NE 68355 Equipment Sold "AS IS, WHERE IS": All equipment/property is sold "AS IS, WHERE IS" with no warranty or guarantees, expressed or implied, No operational assessments have been made by DPA Auctions on this item, it has been photographed ONLY.



#120 - Durline Truck Scales (PD966)

Durline Truck Scales (PD966), 3 pieces, 1 is 11 foot x 25 foot, 2 other pieces are 11 foot x 20 foot, these two can be bolted together, these are very solid and will have to be moved with a crane, weigh approximately 22,000 pounds a piece, would make an excellent deck for a farm scale. Notes: Item Location: Sterling, IL 61081 Equipment Sold "AS IS, WHERE IS": All equipment/property is sold "AS IS, WHERE IS" with no warranty or guarantees, expressed or implied, No operational assessments have been made by DPA Auctions on this item, it has been photographed ONLY.



#121 - 2012 CaseIH 610 Liquid System (PZ0449)

2012 CaseIH 610 Liquid System (PZ0449), 1,800 gallon stainless steel liquid system, 60/85' boom, 30" spacing, 135 gallon rinse tank, foam marker system, fence row nozzles, fits on CaseIH Titan 3030/3530. Notes: Put into service in 2013 and always parked in shed until 2017. Well maintained and in good condition. Item Location: Assumption, IL 62510 Equipment Sold "AS IS, WHERE IS": All equipment/property is sold "AS IS, WHERE IS" with no warranty or guarantees, expressed or implied, No operational assessments have been made by DPA Auctions on this item, it has been photographed ONLY.



#122 - 2012 2000 Gallon Long Nh3 Tank (PD965)

2012 2000 Gallon Long Nh3 Tank (PD965), never had product in it. Notes: Will help load. Item Location: Chandler, OK 74834 Equipment Sold "AS IS, WHERE IS": All equipment/property is sold "AS IS, WHERE IS" with no warranty or guarantees, expressed or implied, No operational assessments have been made by DPA Auctions on this item, it has been photographed ONLY.



#123 - 2016 1465 Gallon Nh3 Tank (PD958)

2016 1465 Gallon Nh3 Tank (PD958), never had product in it, may have paint flaws, 120 inch leg spacing, valve cage included. Notes: Will help load. Item Location: Chandler, OK 74834 Equipment Sold "AS IS, WHERE IS": All equipment/property is sold "AS IS, WHERE IS" with no warranty or guarantees, expressed or implied, No operational assessments have been made by DPA Auctions on this item, it has been photographed ONLY.



#124 - 2010 CaseIH Titan 3520 Dry Floater (PZ0524)

2010 CaseIH Titan 3520 Dry Floater (PZ0524), diesel engine, Allison automatic transmission, air conditioning, heat, Am/Fm radio, New Leader L4000 G4 MultApplier Ready stainless steel dry spreader box, twin spinner, all hydraulic, Michelin Mega Bib 1050/50R32 tires, Voyager camera, auto steer, Viper Pro controller, lightbar, shows 4343 hours. Notes: Item Location: Harritown, IL 62537 Equipment Sold "AS IS, WHERE IS": All equipment/property is sold "AS IS, WHERE IS" with no warranty or guarantees, expressed or implied, No operational assessments have been made by DPA Auctions on this item, it has been photographed ONLY.



#125 - 2016 1465 Gallon Nh3 Tank (PD959)

2016 1465 Gallon Nh3 Tank (PD959), never had product in it, may have paint flaws, 120 inch leg spacing, valve cage included. Notes: Will help load. Item Location: Chandler, OK 74834 Equipment Sold "AS IS, WHERE IS": All equipment/property is sold "AS IS, WHERE IS" with no warranty or guarantees, expressed or implied, No operational assessments have been made by DPA Auctions on this item, it has been photographed ONLY.



#126 - 2018 1465 Gallon Nh3 Tank (PD960)

2018 1465 Gallon Nh3 Tank (PD960), never had product in it, may have paint flaws, 120 inch leg spacing, valve cage included. Notes: Will help load. Item Location: Chandler, OK 74834 Equipment Sold "AS IS, WHERE IS": All equipment/property is sold "AS IS, WHERE IS" with no warranty or guarantees, expressed or implied, No operational assessments have been made by DPA Auctions on this item, it has been photographed ONLY.



#127 - 2018 1465 Gallon Nh3 Tank (PD961)

2018 1465 Gallon Nh3 Tank (PD961), never had product in it, may have paint flaws, 120 inch leg spacing, valve cage included. Notes: Will help load. Item Location: Chandler, OK 74834 Equipment Sold "AS IS, WHERE IS": All equipment/property is sold "AS IS, WHERE IS" with no warranty or guarantees, expressed or implied, No operational assessments have been made by DPA Auctions on this item, it has been photographed ONLY.



#128 - 2017 1465 Gallon Nh3 Tank (PD962)

2017 1465 Gallon Nh3 Tank (PD962), never had product in it, may have paint flaws, 120 inch leg spacing, valve cage included. Notes: Will help load. Item Location: Chandler, OK 74834 Equipment Sold "AS IS, WHERE IS": All equipment/property is sold "AS IS, WHERE IS" with no warranty or guarantees, expressed or implied, No operational assessments have been made by DPA Auctions on this item, it has been photographed ONLY.



#129 - 2017 1465 Gallon Nh3 Tank (PD963)

2017 1465 Gallon Nh3 Tank (PD963), never had product in it, may have paint flaws, 120 inch leg spacing, valve cage included. Notes: Will help load. Item Location: Chandler, OK 74834 Equipment Sold "AS IS, WHERE IS": All equipment/property is sold "AS IS, WHERE IS" with no warranty or guarantees, expressed or implied, No operational assessments have been made by DPA Auctions on this item, it has been photographed ONLY.



#130 - 2016 2000 Gallon Short Stubby Nh3 Tank (PD964)

2016 2000 Gallon Short Stubby Nh3 Tank (PD964), never had product in it, may have paint flaws. Notes: Will help load. Item Location: Chandler, OK 74834 Equipment Sold "AS IS, WHERE IS": All equipment/property is sold "AS IS, WHERE IS" with no warranty or guarantees, expressed or implied, No operational assessments have been made by DPA Auctions on this item, it has been photographed ONLY.



#131 - Flotation Tires (PZ0292)

Flotation Tires (PZ0292), 4 - Good Year & Titan 620/70R46 Flotation tires, rims. Notes: Item Location: Sumner, IA 50674 Equipment Sold "AS IS, WHERE IS": All equipment/property is sold "AS IS, WHERE IS" with no warranty or guarantees, expressed or implied, No operational assessments have been made by DPA Auctions on this item, it has been photographed ONLY.



#132 - 1975 Ford Cab-Over (ED685)

1975 Ford Cab-Over (ED685), gas motor, 5 speed transmission, 2 speed rear end, single axle, spring ride suspension, excellent rubber, 11R22.5, 16 foot steel box, barn door end gates. Notes: Hoist does not sell with unit. Item Location: Eagle Grove, IA 50533 Equipment Sold "AS IS, WHERE IS": All equipment/property is sold "AS IS, WHERE IS" with no warranty or guarantees, expressed or implied, No operational assessments have been made by DPA Auctions on this item, it has been photographed ONLY.



#133 - 1989 White GMC Conventional WCS (ED686)

1989 White GMC Conventional WCS (ED686), semi tractor, L10 Cummins engine, 9 speed, tandem axle, air ride suspension, twin-screw, dual aluminum tanks, air ride seat, air slide fifth wheel, AC, heat, AM/FM radio, cruise control engine brake, 1R22.5 size, motor issues, turns over but can not get to run, shows 496,747 miles. Notes: Item Location: Eagle Grove, IA 50533 Equipment Sold "AS IS, WHERE IS": All equipment/property is sold "AS IS, WHERE IS" with no warranty or guarantees, expressed or implied, No operational assessments have been made by DPA Auctions on this item, it has been photographed ONLY.



#134 - 1973 Chevy C60 (ED684)

1973 Chevy C60 (ED684), 350 V8 gas motor, 5 speed transmission, 2 speed rear end, single axle, spring ride suspension, 9X20 tires, 700 miles on overhaul but has carburetor issues, needs new battery. Notes: Item Location: Eagle Grove, IA 50533 Equipment Sold "AS IS, WHERE IS": All equipment/property is sold "AS IS, WHERE IS" with no warranty or guarantees, expressed or implied, No operational assessments have been made by DPA Auctions on this item, it has been photographed ONLY.



#135 - Sprayer Trailer (DR0438)

Sprayer Trailer (DR0438), tandem axle, pintle hitch, rear fold down ramps, tie down rings. Notes: Trailer has NO TITLE. Item Location: Sheldon, WI 54766 Equipment Sold "AS IS, WHERE IS": All equipment/property is sold "AS IS, WHERE IS" with no warranty or guarantees, expressed or implied, No operational assessments have been made by DPA Auctions on this item, it has been photographed ONLY.



#136 - 2013 JCB 205E Loader (DL362, U1272)

2013 JCB 205E Loader (DL362, U1272), JCB 62hp diesel engine, hydrostatic transmission, 20% remains on tires, bucket has been recently repainted, new ECM, rebuilt hydraulic cooler, 600 hours. Notes: Item Location: Biglerville, PA 17307 Equipment Sold "AS IS, WHERE IS": All equipment/property is sold "AS IS, WHERE IS" with no warranty or guarantees, expressed or implied, No operational assessments have been made by DPA Auctions on this item, it has been photographed ONLY.



#137 - 2008 Kubota M108X Tractor (PD969)

2008 Kubota M108X Tractor (PD969), 108 h.p., 16 speed powershift transmission, cab heat/ac, tire size 18.4 R34 rear and 13.6-24 front good tread, 3200 hours, 2 hydraulic remotes, 4X4, clean tractor. Notes: Item Location: Morris, IL 60450 Equipment Sold "AS IS, WHERE IS": All equipment/property is sold "AS IS, WHERE IS" with no warranty or guarantees, expressed or implied, No operational assessments have been made by DPA Auctions on this item, it has been photographed ONLY.



#138 - 1988 Freightliner Liquid Truck (CP542)

1988 Freightliner Liquid Truck (CP542), Cummins diesel engine, 13 speed transmission, heat, air conditioning, Am/Fm radio, tandem axle, 3,200 gallon poly liquid tank, air brakes, 1/4 fenders, 24.5 tires, shows 235,951 miles. Notes: This truck is a NON RUNNER. Pump on truck DOES NOT SELL with this truck. Item Location: Colon, NE 68018 Equipment Sold "AS IS, WHERE IS": All equipment/property is sold "AS IS, WHERE IS" with no warranty or guarantees, expressed or implied, No operational assessments have been made by DPA Auctions on this item, it has been photographed ONLY.



#139 - Poly cone bottom tank (CP540)

Poly cone bottom tank (CP540) 2500 gallon poly cone bottom tank, metal stand, top fill. Notes: Item Location: Colon, NE 68018 Equipment Sold "AS IS, WHERE IS": All equipment/property is sold "AS IS, WHERE IS" with no warranty or guarantees, expressed or implied, No operational assessments have been made by DPA Auctions on this item, it has been photographed ONLY.



#140 - Poly cone bottom tank (CP541)

Poly cone bottom tank (CP541) 3500 gallon poly cone bottom tank, metal stand, top fill. Notes: Item Location: Colon, NE 68018 Equipment Sold "AS IS, WHERE IS": All equipment/property is sold "AS IS, WHERE IS" with no warranty or guarantees, expressed or implied, No operational assessments have been made by DPA Auctions on this item, it has been photographed ONLY.



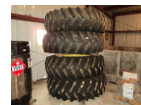
#141 - 1000 Gallon Stainless Steel Tank (ED693)

1000 Gallon Stainless Steel Tank (ED693), used for water tank for rural fire department. Notes: Seller can assist with loading. Item Location: Keenes, IL 62851 Equipment Sold "AS IS, WHERE IS": All equipment/property is sold "AS IS, WHERE IS" with no warranty or guarantees, expressed or implied, No operational assessments have been made by DPA Auctions on this item, it has been photographed ONLY.



#142 - Flotation Tires (PZ0305)

Flotation Tires (PZ0305), 4 - Firestone 20.8R38 flotation tires and rims. Notes: Item Location: Miles, IA 52064 Equipment Sold "AS IS, WHERE IS": All equipment/property is sold "AS IS, WHERE IS" with no warranty or guarantees, expressed or implied, No operational assessments have been made by DPA Auctions on this item, it has been photographed ONLY.



#143 - 2000 Gallon Water Tank (ED692)

2000 Gallon Water Tank (ED692), used as a water tank for rural fire department. Notes: Seller can assist with loading. Item Location: Keenes, IL 62851 Equipment Sold "AS IS, WHERE IS": All equipment/property is sold "AS IS, WHERE IS" with no warranty or guarantees, expressed or implied, No operational assessments have been made by DPA Auctions on this item, it has been photographed ONLY.



#144 - 2010 Blizzard 8611 Snow Plow (TH347)

2010 Blizzard 8611 Snow Plow (TH347), 8' 6", expands to 11', mount is for 5500 Chevy or GMC top kick 2 or 4 wheel drive, all wiring and light bar included. Notes: Very little usage. Truck featured in picture IS NOT included. Item Location: Brookings, SD 57006 Equipment Sold "AS IS, WHERE IS": All equipment/property is sold "AS IS, WHERE IS" with no warranty or guarantees, expressed or implied, No operational assessments have been made by DPA Auctions on this item, it has been photographed ONLY.



#145 - (4) Goodyear Flotation Tires/Rims (ED694)

(4) Goodyear Flotation Tires/Rims (ED694), 620/70R/46 size, will fit 4920, 4930, 4940, 40% tread matching. Notes: Item Location: Bowen, IL 62316 Equipment Sold "AS IS, WHERE IS": All equipment/property is sold "AS IS, WHERE IS" with no warranty or guarantees, expressed or implied, No operational assessments have been made by DPA Auctions on this item, it has been photographed ONLY.



#146 - (4) RoGator Tires (ED695)

(4) RoGator Tires (ED695), 320/90R/50 matching tires and wheels off 994 RoGator, 12 bolt, will fit 1194/900/1100/1300, one tire is at 10%, other 3 at 30%. Notes: Item Location: Bowen, IL 62316 Equipment Sold "AS IS, WHERE IS": All equipment/property is sold "AS IS, WHERE IS" with no warranty or guarantees, expressed or implied, No operational assessments have been made by DPA Auctions on this item, it has been photographed ONLY.



#147 - 2005 Wilson Livestock Trailer (PD970)

2005 Wilson Livestock Trailer (PD970), 52 foot length, spread axle, air ride suspension, tire size 285/75/24.5 and 75%, good floors, middle divide gates top and bottom, brakes 75%. Notes: Item Location: Waukon, IA 52172 Equipment Sold "AS IS, WHERE IS": All equipment/property is sold "AS IS, WHERE IS" with no warranty or guarantees, expressed or implied, No operational assessments have been made by DPA Auctions on this item, it has been photographed ONLY.



#148 - 1988 Ford F-700 (AL523)

1988 Ford F-700 (AL523), Ford 6.6L diesel engine, automatic transmission, am/FM radio, manual locks and windows, decent back tires, weather checked front tires, 2 line wet line, runs and drives good, no rust, shows 257,569 miles. Notes: Item Location: Tovey, IL 62570 Equipment Sold "AS IS, WHERE IS": All equipment/property is sold "AS IS, WHERE IS" with no warranty or guarantees, expressed or implied, No operational assessments have been made by DPA Auctions on this item, it has been photographed ONLY.



#149 - Hutchison Conveyor (AL526)

Hutchison Conveyor (AL526), 60'x15" hydraulic lift, brand new 3 phase motor. Notes: Item Location: Morrisonville, IL 62546 Equipment Sold "AS IS, WHERE IS": All equipment/property is sold "AS IS, WHERE IS" with no warranty or guarantees, expressed or implied, No operational assessments have been made by DPA Auctions on this item, it has been photographed ONLY.



#150 - 1974 Heil 5200 Gallon Liquid Trailer (AL525)

1974 Heil 5200 Gallon Liquid Trailer (AL525), tandem axle, spring ride suspension, almost new Virgin tires, hydraulic pump, full length sparger, Demco 3" pump, 75% brakes, solid frame and tank, zero leaks. Notes: Item Location: Pana, IL 62557 Equipment Sold "AS IS, WHERE IS": All equipment/property is sold "AS IS, WHERE IS" with no warranty or guarantees, expressed or implied, No operational assessments have been made by DPA Auctions on this item, it has been photographed ONLY.



#151 - 2003 B&B Drop Deck Sprayer Trailer (AL524)

2003 B&B Drop Deck Sprayer Trailer (AL524), 32' lower deck, 12' top deck, spread axle, wood deck, will haul any sprayer on 120" wheel spacing, road ready. Notes: Item Location: Tovey, IL 62570 Equipment Sold "AS IS, WHERE IS": All equipment/property is sold "AS IS, WHERE IS" with no warranty or guarantees, expressed or implied, No operational assessments have been made by DPA Auctions on this item, it has been photographed ONLY.



#152 - 2012 International Prostar Mid-Roof Sleeper (TH348)

2012 International Prostar Mid-Roof Sleeper (TH348), MaxxForce 13 engine, 10 speed transmission, shows 490,000 miles. Notes: Item Location: Louisville, KY 40203 Equipment Sold "AS IS, WHERE IS": All equipment/property is sold "AS IS, WHERE IS" with no warranty or guarantees, expressed or implied, No operational assessments have been made by DPA Auctions on this item, it has been photographed ONLY.



#153 - (4) Firestone Flotation Tires/Rims (NP7208)

(4) Firestone Flotation Tires/Rims (NP7208), Radial 9000, size 600/65R38, 12 bolt rim pattern. Notes: Came off John Deere 4830 Sprayer. Item Location: Clay Center, KS 67432 Equipment Sold "AS IS, WHERE IS": All equipment/property is sold "AS IS, WHERE IS" with no warranty or guarantees, expressed or implied, No operational assessments have been made by DPA Auctions on this item, it has been photographed ONLY.



#154 - Ford 801 Tractor (PD971)

Ford 801 Tractor (PD971), Gasoline engine, 63.7 h.p., all new front and rear tires, 44 h.p. PTO rated, new battery, new coils, new plug wires and points, oil changed, PTO and lift arms work, hour meter has been changed so hours unknown. Notes: Working on lights and hope to have them working before auction. Item Location: Plattsburg, MO 64477 Equipment Sold "AS IS, WHERE IS": All equipment/property is sold "AS IS, WHERE IS" with no warranty or guarantees, expressed or implied, No operational assessments have been made by DPA Auctions on this item, it has been photographed ONLY.



#155 - 2008 F-550 (TR6080)

2008 F-550 (TR6080), 6.4L engine, automatic transmission, 5th wheel, flatbed, side compartment, am/fm CD player, power seats/power windows/locks, heat/AC, 151,000 miles. Notes: BLOWN ENGINE. Item Location: York, NE 68467 Equipment Sold "AS IS, WHERE IS": All equipment/property is sold "AS IS, WHERE IS" with no warranty or guarantees, expressed or implied, No operational assessments have been made by DPA Auctions on this item, it has been photographed ONLY.



#156 - 1995 International 5500 Cement Truck (ED691)

1995 International 5500 Cement Truck (ED691), L10 Cummins, 9LL transmission, air lift tag axle, steerable push axle, heavy single frame, full locking rears, 20K fronts, 46K rears, excellent 22.5 rubber, walking beam suspension, AC, heat, AM/FM radio, new radiator, new motor mounts, shows 370,327 miles. Notes: Item Location: Eagle Grove, IA 50533 Equipment Sold "AS IS, WHERE IS": All equipment/property is sold "AS IS, WHERE IS" with no warranty or guarantees, expressed or implied, No operational assessments have been made by DPA Auctions on this item, it has been photographed ONLY.



#157 - 1979 Ford F Series (ED687)

1979 Ford F Series (ED687), 5 speed transmission, 2 speed rear end, single axle, spring ride suspension, V8 gas motor, good rubber, 8.25-20 tires, runs but has fuel issues. Notes: Item Location: Eagle Grove, IA 50533 Equipment Sold "AS IS, WHERE IS": All equipment/property is sold "AS IS, WHERE IS" with no warranty or guarantees, expressed or implied, No operational assessments have been made by DPA Auctions on this item, it has been photographed ONLY.



#159 - USC Cruiser Cart (MH309)

USC Cruiser Cart (MH309), USC Cruiser Cart, dry dock connections for two kegs, 30 gallon stainless steel mix tank with scale under it, two pumps, scale under treatment dispensing tank that records and tracks flow, always stored inside. Notes: Always stored inside heated area. Item Location: Dunbar, NE 68346 Equipment Sold "AS IS, WHERE IS": All equipment/property is sold "AS IS, WHERE IS" with no warranty or guarantees, expressed or implied, No operational assessments have been made by DPA Auctions on this item, it has been photographed ONLY.



#160 - USC LP 2000 Seed Treater (MH305)

USC LP 2000 Seed Treater (MH305), 30 gallon stainless steel mix tank, flow meter, seed wheel, calibration tube, Poly Inoculant tank, 2 Peristaltic pumps, control board has Inlet and Outlet conveyor plugs and switches, cleaned and flushed, ready to work, solid running treater, always stored inside. Notes: Seed treater always stored inside heated area. Item Location: Dunbar, NE 68346 Equipment Sold "AS IS, WHERE IS": All equipment/property is sold "AS IS, WHERE IS" with no warranty or guarantees, expressed or implied, No operational assessments have been made by DPA Auctions on this item, it has been photographed ONLY.



#161 - 2015 Inlet Box Hopper Stand (MH306)

2015 Inlet Box Hopper Stand (MH306), 2015 Inlet box hopper stand, adjustable legs, lid, forklift holes, always stored indoors. Notes: Always stored inside heated area. Item Location: Dunbar, NE 68346 Equipment Sold "AS IS, WHERE IS": All equipment/property is sold "AS IS, WHERE IS" with no warranty or guarantees, expressed or implied, No operational assessments have been made by DPA Auctions on this item, it has been photographed ONLY.



#162 - 2015 USC 2516 Portable Belt Conveyor (MH307)

2015 USC 2516 Portable Belt Conveyor (MH307), 2516 USC Inlet portable belt conveyor, 25ft, 16in belt, manual winch height adjustment, always stored inside, excellent condition. Notes: Always stored inside heated area. Item Location: Dunbar, NE 68346 Equipment Sold "AS IS, WHERE IS": All equipment/property is sold "AS IS, WHERE IS" with no warranty or guarantees, expressed or implied, No operational assessments have been made by DPA Auctions on this item, it has been photographed ONLY.



#163 - 2015 USC 2516 Portable Belt Conveyor (MH308)

2015 USC 2516 Portable Belt Conveyor (MH308), 2516 USC Outlet portable belt conveyor, 25ft, 16in belt, manual winch height adjustment, always stored inside, spotless and in excellent condition. Notes: Always stored inside heated area. Item Location: Dunbar, NE 68346 Equipment Sold "AS IS, WHERE IS": All equipment/property is sold "AS IS, WHERE IS" with no warranty or guarantees, expressed or implied, No operational assessments have been made by DPA Auctions on this item, it has been photographed ONLY.



#164 - Flotation Tires (PZ0329)

Flotation Tires (PZ0329), 6 - Flotation tires (4 - Good Year 620/70R46 flotation tires & rims, 2 - Titan 620/70R46 flotation tires & rims). Notes: Item Location: Chapin, IA 50427 Equipment Sold "AS IS, WHERE IS": All equipment/property is sold "AS IS, WHERE IS" with no warranty or guarantees, expressed or implied, No operational assessments have been made by DPA Auctions on this item, it has been photographed ONLY.



#165 - DMI 4300 Tool Bar (PZ0523)

DMI 4300 Tool Bar (PZ0523), DMI 4300 13/15 tool bar, 1x2 shanks, coulters, double disc sealers, Raven Super cooler, hydraulic wings, 12.5L-15 flotation tires, rear hitch. Notes: Item Location: Greenfield, IN 46140 Equipment Sold "AS IS, WHERE IS": All equipment/property is sold "AS IS, WHERE IS" with no warranty or guarantees, expressed or implied, No operational assessments have been made by DPA Auctions on this item, it has been photographed ONLY.



#166 - 1993 Transcraft Flatbed Trailer (KMK659)

1993 Transcraft Flatbed Trailer (KMK659), Eagle, 45' length, spread axle, wood deck, air ride suspension, spare tire, side mount tool box, tie down straps. Notes: Item Location: Joliet, IL 60435 Equipment Sold "AS IS, WHERE IS": All equipment/property is sold "AS IS, WHERE IS" with no warranty or guarantees, expressed or implied, No operational assessments have been made by DPA Auctions on this item, it has been photographed ONLY.



#167 - 2010 Timpte Super Hopper Grain Trailer (KMK658)

2010 Timpte Super Hopper Grain Trailer (KMK658), 43' aluminum hopper, 72" sides, tandem axle, air ride suspension, roll over tarp, aluminum wheels. Notes: Item Location: Joliet, IL 60435 Equipment Sold "AS IS, WHERE IS": All equipment/property is sold "AS IS, WHERE IS" with no warranty or guarantees, expressed or implied, No operational assessments have been made by DPA Auctions on this item, it has been photographed ONLY.



#168 - 2005 International 9900i Eagle (KMK657)

2005 International 9900i Eagle (KMK657), ISX Cummins diesel engine, 485 hp., engine brake, 18 speed Eaton Fuller transmission, air ride suspension, tandem axle, am/fm/cd radio, heat and air conditioning, tilt/telescoping steering wheel, power/heated mirrors, power windows and locks, 250" wheel base, differential lock, 5th wheel, dual aluminum fuel tanks, chrome bumper and dual chrome stacks, shows approx. 1,200,000 miles. Notes: Shows approximately 1,200,000 miles approximately 800,000 on replacement engine. Item Location: Joliet, IL 60435 Equipment Sold "AS IS, WHERE IS": All equipment/property is sold "AS IS, WHERE IS" with no warranty or guarantees, expressed or implied, No operational assessments have been made by DPA Auctions on this item, it has been photographed ONLY.



#169 - 10x66 Arts Way Auger (AL472)

10x66 Arts Way Auger (AL472), 2010 top drive galvanized, purchased new, one owner, hydraulic lift, low use, Model: SD205891. Notes: Item Location: Sumner, IA 50674 Equipment Sold "AS IS, WHERE IS": All equipment/property is sold "AS IS, WHERE IS" with no warranty or guarantees, expressed or implied, No operational assessments have been made by DPA Auctions on this item, it has been photographed ONLY.



#170 - M&W 406 Row Runner Detasseler (CP573)

M&W 406 Row Runner Detasseler (CP573), gas engine, hydrostatic transmission, canopy, 8-chopping blades, shows 2,473 hours. Notes: Item Location: Grand Ridge, IL 61325 Equipment Sold "AS IS, WHERE IS": All equipment/property is sold "AS IS, WHERE IS" with no warranty or guarantees, expressed or implied, No operational assessments have been made by DPA Auctions on this item, it has been photographed ONLY.



#171 - M&W 406 Row Runner Detasseler (CP574)

M&W 406 Row Runner Detasseler (CP574), gas engine, hydrostatic transmission, canopy, 8-chopping blades, shows 1,671 hours. Notes: Item Location: Grand Ridge, IL 61325 Equipment Sold "AS IS, WHERE IS": All equipment/property is sold "AS IS, WHERE IS" with no warranty or guarantees, expressed or implied, No operational assessments have been made by DPA Auctions on this item, it has been photographed ONLY.



#173 - Clark Forklift (PZ0434)

Clark Forklift (PZ0434), Clark model C500-40 LP forklift, shuttle shift transmission, canopy, lights, side shift, shows 719 hours. Notes: Has a few issues. Please call seller for more information. Item Location: Washington, IA 52353 Equipment Sold "AS IS, WHERE IS": All equipment/property is sold "AS IS, WHERE IS" with no warranty or guarantees, expressed or implied, No operational assessments have been made by DPA Auctions on this item, it has been photographed ONLY.



#175 - Komatsu Forklift (PZ0425)

Komatsu Forklift (PZ0425), Komatsu LP forklift, shuttle shift transmission, canopy, lights, side shift, 18x6x12.5 front tires, shows 4271 hours. Notes: Item Location: Sigourney, IA 52591 Equipment Sold "AS IS, WHERE IS": All equipment/property is sold "AS IS, WHERE IS" with no warranty or guarantees, expressed or implied, No operational assessments have been made by DPA Auctions on this item, it has been photographed ONLY.



#176 - 40 LB LP Bottle (PZ0430)

40 LB LP Bottle (PZ0430), 40 LB LP bottle, with product. Notes: Item Location: Sigourney, IA 52591 Equipment Sold "AS IS, WHERE IS": All equipment/property is sold "AS IS, WHERE IS" with no warranty or guarantees, expressed or implied, No operational assessments have been made by DPA Auctions on this item, it has been photographed ONLY.



#177 - 40 LB LP Bottle (PZ0429)

40 LB LP Bottle (PZ0429), 40 LB LP bottle, with product. Notes: Item Location: Sigourney, IA 52591 Equipment Sold "AS IS, WHERE IS": All equipment/property is sold "AS IS, WHERE IS" with no warranty or guarantees, expressed or implied, No operational assessments have been made by DPA Auctions on this item, it has been photographed ONLY.



#178 - 100 LB LP Bottle (PZ0432)

100 LB LP Bottle (PZ0432), 40 LB LP bottle, with product. Notes: Item Location: Sigourney, IA 52591 Equipment Sold "AS IS, WHERE IS": All equipment/property is sold "AS IS, WHERE IS" with no warranty or guarantees, expressed or implied, No operational assessments have been made by DPA Auctions on this item, it has been photographed ONLY.



#179 - Lexco Hydraulic Table (PZ0416)

Lexco Hydraulic Table (PZ0416), Lexco steel hydraulic table, casters. Notes: Item Location: Sigourney, IA 52591 Equipment Sold "AS IS, WHERE IS": All equipment/property is sold "AS IS, WHERE IS" with no warranty or guarantees, expressed or implied, No operational assessments have been made by DPA Auctions on this item, it has been photographed ONLY.



#181 - New North Star Air Compressor (PZ0419)

New North Star Air Compressor (PZ0419), New North Star air compressor, Honda electric start gas engine, compressor, air tank. Notes: Item Location: Sigourney, IA 52591 Equipment Sold "AS IS, WHERE IS": All equipment/property is sold "AS IS, WHERE IS" with no warranty or guarantees, expressed or implied, No operational assessments have been made by DPA Auctions on this item, it has been photographed ONLY.



#182 - M&W 406 Row Runner Detasseler (CP575)

M&W 406 Row Runner Detasseler (CP575), gas engine, hydrostatic transmission, canopy, 8-chopping blades, shows 1,917 hours. Notes: Item Location: Grand Ridge, IL 61325 Equipment Sold "AS IS, WHERE IS": All equipment/property is sold "AS IS, WHERE IS" with no warranty or guarantees, expressed or implied, No operational assessments have been made by DPA Auctions on this item, it has been photographed ONLY.



#183 - M&W 406 Row Runner Detasseler (CP577)

M&W 406 Row Runner Detasseler (CP577), gas engine, hydrostatic transmission, canopy, 8-chopping blades, shows 1,604 hours. Notes: Item Location: Grand Ridge, IL 61325 Equipment Sold "AS IS, WHERE IS": All equipment/property is sold "AS IS, WHERE IS" with no warranty or guarantees, expressed or implied, No operational assessments have been made by DPA Auctions on this item, it has been photographed ONLY.



#185 - Industrial Sign (PZ0421)

Industrial Sign (PZ0421), Industrial sign, still in crate. Notes: Item Location: Sigourney, IA 52591 Equipment Sold "AS IS, WHERE IS": All equipment/property is sold "AS IS, WHERE IS" with no warranty or guarantees, expressed or implied, No operational assessments have been made by DPA Auctions on this item, it has been photographed ONLY.



#187 - Lockable Steel Cabinet (PZ0423)

Lockable Steel Cabinet (PZ0423), Lockable steel cabinet, portable on wheels. Notes: Item Location: Sigourney, IA 52591 Equipment Sold "AS IS, WHERE IS": All equipment/property is sold "AS IS, WHERE IS" with no warranty or guarantees, expressed or implied, No operational assessments have been made by DPA Auctions on this item, it has been photographed ONLY.



#188 - 2015 Maxey Gooseneck Trailer (PZ0431)

2015 Maxey Gooseneck Trailer (PZ0431), 2015 Maxey gooseneck trailer, approx. 21', wood floor, fold down ramp, sides, D rings, storage box, tandem axle, ST235/80R16 tires. Notes: Item Location: Sigourney, IA 52591 Equipment Sold "AS IS, WHERE IS": All equipment/property is sold "AS IS, WHERE IS" with no warranty or guarantees, expressed or implied, No operational assessments have been made by DPA Auctions on this item, it has been photographed ONLY.



#189 - 1989 Walbash Van Trailer (PZ0427)

1989 Walbash Van Trailer (PZ0427), 1989 Walbash van trailer, rear cargo doors, shelving, tandem axle, spring suspension, 295/75R22.5 tires. Notes: This trailer is not road worthy and it will NOT have a title, it's used for storage only. Item Location: Sigourney, IA 52591 Equipment Sold "AS IS, WHERE IS": All equipment/property is sold "AS IS, WHERE IS" with no warranty or guarantees, expressed or implied, No operational assessments have been made by DPA Auctions on this item, it has been photographed ONLY.



#190 - 2008 Utiltiy Van Trailer (PZ0428)

2008 Utiltiy Van Trailer (PZ0428), 2008 Utility van trailer, rear roll up door, Maxon model GPTLR44 Tuk-A-Way lift gate, tandem axle, air ride suspension, 295/75R22.5 tires. Notes: Item Location: Sigourney, IA 52591 Equipment Sold "AS IS, WHERE IS": All equipment/property is sold "AS IS, WHERE IS" with no warranty or guarantees, expressed or implied, No operational assessments have been made by DPA Auctions on this item, it has been photographed ONLY.



#192 - PVC Pipe (PZ0426)

PVC Pipe (PZ0426), Rack of various size PVC pipe. Notes: Item Location: Sigourney, IA 52591 Equipment Sold "AS IS, WHERE IS": All equipment/property is sold "AS IS, WHERE IS" with no warranty or guarantees, expressed or implied, No operational assessments have been made by DPA Auctions on this item, it has been photographed ONLY.



#193 - Dock Plate (PZ0433)

Dock Plate (PZ0433), 5'x5' aluminum dock plate. Notes: Item Location: Sigourney, IA 52591 Equipment Sold "AS IS, WHERE IS": All equipment/property is sold "AS IS, WHERE IS" with no warranty or guarantees, expressed or implied, No operational assessments have been made by DPA Auctions on this item, it has been photographed ONLY.



#194 - M&W 406 Row Runner Detasseler (CP576)

M&W 406 Row Runner Detasseler (CP576), gas engine, hydrostatic transmission, canopy, 8-chopping blades, shows 1,787 hours. Notes: Item Location: Grand Ridge, IL 61325 Equipment Sold "AS IS, WHERE IS": All equipment/property is sold "AS IS, WHERE IS" with no warranty or guarantees, expressed or implied, No operational assessments have been made by DPA Auctions on this item, it has been photographed ONLY.



#195 - M&W Grain Wagon

M&W Grain Wagon, Model 3800A, "Little Red Wagon", flotation tires. Notes: Item Location: Grand Ridge, IL 61325 Equipment Sold "AS IS, WHERE IS": All equipment/property is sold "AS IS, WHERE IS" with no warranty or guarantees, expressed or implied, No operational assessments have been made by DPA Auctions on this item, it has been photographed ONLY.



#196 - 2007 Sterling Truck (PZ0445)

2007 Sterling Truck (PZ0445), Detroit Series 60 diesel engine, 10 speed transmission, air conditioning, heat, Am/Fm CD stereo, cruise control, engine brake, power windows & locks, tandem axle, full screw, air ride suspension, 5th wheel, 11R22.5 tires, aluminum rims, shows 617,103 miles. Notes: Item Location: Saint Paul, IA 52657 Equipment Sold "AS IS, WHERE IS": All equipment/property is sold "AS IS, WHERE IS" with no warranty or guarantees, expressed or implied, No operational assessments have been made by DPA Auctions on this item, it has been photographed ONLY.



#197 - 1996 Ford F350 Flatbed Dually (PZ0444)

1996 Ford F350 Flatbed Dually (PZ0444), 4x4, gas engine, automatic transmission, air conditioning, heat, Am/Fm cassette radio, cruise control, power windows & locks, running boards, steel flatbed, Western 8' snowplow, controls, LT235/85R16 tires, approx. 116,000 miles. Notes: Item Location: Saint Paul, IA 52657 Equipment Sold "AS IS, WHERE IS": All equipment/property is sold "AS IS, WHERE IS" with no warranty or guarantees, expressed or implied, No operational assessments have been made by DPA Auctions on this item, it has been photographed ONLY.



#198 - Steel Pickup Flat Bed (DL380)

Steel Pickup Flat Bed (DL380), 9' long, metal deck, lights, rear window protector. Notes: Stands pictured do not sell with this lot. Item Location: Sleepy Eye, MN 56085 Equipment Sold "AS IS, WHERE IS": All equipment/property is sold "AS IS, WHERE IS" with no warranty or guarantees, expressed or implied, No operational assessments have been made by DPA Auctions on this item, it has been photographed ONLY.



#199 - 1000 Gallon NH3 Tank (DL384)

1000 Gallon NH3 Tank (DL384), 1000 gallon NH3 nurse tank, top fill, 4 wheel running gear. Notes: Item Location: Fairfax, MN 55332 Equipment Sold "AS IS, WHERE IS": All equipment/property is sold "AS IS, WHERE IS" with no warranty or guarantees, expressed or implied, No operational assessments have been made by DPA Auctions on this item, it has been photographed ONLY.



#200 - 1000 Gallon NH3 Tank (DL383)

1000 Gallon NH3 Tank (DL383), 1000 gallon NH3 nurse tank, top fill, 4 wheel running gear. Notes: Item Location: Fairfax, MN 55332 Equipment Sold "AS IS, WHERE IS": All equipment/property is sold "AS IS, WHERE IS" with no warranty or guarantees, expressed or implied, No operational assessments have been made by DPA Auctions on this item, it has been photographed ONLY.



#201 - 1000 Gallon NH3 Tank (DL382)

1000 Gallon NH3 Tank (DL382), 1000 gallon NH3 nurse tank, top fill, 4 wheel running gear. Notes: Item Location: Fairfax, MN 55332 Equipment Sold "AS IS, WHERE IS": All equipment/property is sold "AS IS, WHERE IS" with no warranty or guarantees, expressed or implied, No operational assessments have been made by DPA Auctions on this item, it has been photographed ONLY.



#202 - 1000 Gallon NH3 Tank (DL379)

1000 Gallon NH3 Tank (DL379), 1000 gallon NH3 nurse tank, top fill, 4 wheel running gear. Notes: Item Location: Fairfax, MN 55332 Equipment Sold "AS IS, WHERE IS": All equipment/property is sold "AS IS, WHERE IS" with no warranty or guarantees, expressed or implied, No operational assessments have been made by DPA Auctions on this item, it has been photographed ONLY.



#203 - 1980 Polar Liquid Fertilizer Trailer (DL388)

1980 Polar Liquid Fertilizer Trailer (DL388), 5,000 gallons, one compartment, aluminum transport trailer, tandem axle, spring ride suspension, fenders, rear discharge, 11R-22.5 tires. Notes: Needs pump. Item Location: Buffalo Lake, MN 55314 Equipment Sold "AS IS, WHERE IS": All equipment/property is sold "AS IS, WHERE IS" with no warranty or guarantees, expressed or implied, No operational assessments have been made by DPA Auctions on this item, it has been photographed ONLY.



#204 - 1993 Chevy 2500 Cheyenne (DL385)

1993 Chevy 2500 Cheyenne (DL385), 5.7 liter gas engine, 4 X 4, automatic transmission, am/fm radio, heat and air conditioning, bench seat, topper with rear and side access, DMI cushion hitch, shows 305,560 miles. Notes: Item Location: Buffalo Lake, MN 55314 Equipment Sold "AS IS, WHERE IS": All equipment/property is sold "AS IS, WHERE IS" with no warranty or guarantees, expressed or implied, No operational assessments have been made by DPA Auctions on this item, it has been photographed ONLY.



#205 - 1995 Ford 450 Flat Bed (DL381)

1995 Ford 450 Flat Bed (DL381), 7.5 liter gas engine, 5 speed manual transmission, 2 wheel drive, dually, heat and air conditioning, am/fm radio 10' flat bed, removable sides, shows 152,737 miles. Notes: Item Location: Gibbon, MN 55335 Equipment Sold "AS IS, WHERE IS": All equipment/property is sold "AS IS, WHERE IS" with no warranty or guarantees, expressed or implied, No operational assessments have been made by DPA Auctions on this item, it has been photographed ONLY.



#206 - 2011 Keifer Built (DR0496)

2011 Keifer Built (DR0496), 24' aluminum livestock trailer, street side access door, (2) center gates, Canadian rear swing door, tandem axle, loading light, spare tire and rim, 2 extra tires without rims. Notes: Item Location: Grygla, MN 56727 Equipment Sold "AS IS, WHERE IS": All equipment/property is sold "AS IS, WHERE IS" with no warranty or guarantees, expressed or implied, No operational assessments have been made by DPA Auctions on this item, it has been photographed ONLY.



#207 - Mobile Tar Sealer (KMK644)

Mobile Tar Sealer (KMK644), mobile crack sealer, ball hitch, ST205/ 75 D14 tires. Notes: Item Location: Sioux City, IA 51105 Equipment Sold "AS IS, WHERE IS": All equipment/property is sold "AS IS, WHERE IS" with no warranty or guarantees, expressed or implied, No operational assessments have been made by DPA Auctions on this item, it has been photographed ONLY.



#208 - Hagie 472 Hi-Tractor Detasseler (CP596)

Hagie 472 Hi-Tractor Detasseler (CP596), gas engine, hydrostatic transmission, canopy, 4-row tassel pullers, shows 125 hours. Notes: Item Location: Pontiac, IL 61764 Equipment Sold "AS IS, WHERE IS": All equipment/property is sold "AS IS, WHERE IS" with no warranty or guarantees, expressed or implied, No operational assessments have been made by DPA Auctions on this item, it has been photographed ONLY.



#209 - M&W 406 Row Runner Detasseler (CP598)

M&W 406 Row Runner Detasseler (CP598), gas engine, hydrostatic transmission, canopy, 6-chopping blades, shows 1,762 hours. Notes: Item Location: Pontiac, IL 61764 Equipment Sold "AS IS, WHERE IS": All equipment/property is sold "AS IS, WHERE IS" with no warranty or guarantees, expressed or implied, No operational assessments have been made by DPA Auctions on this item, it has been photographed ONLY.



#210 - 1995 Crafcro Melter/ Applicator (KMK643)

1995 Crafcro Melter/ Applicator (KMK643), E-Z pour model, 100 gallon capacity, pump and mixer controls, recirculation valve, application valve, tank valve, pump and mixer controls, hydraulic oil tank, diesel fuel tank, ball hitch, 185 R14 tires, shows 3058 hours. Notes: Item Location: Sioux City, IA 51105 Equipment Sold "AS IS, WHERE IS": All equipment/property is sold "AS IS, WHERE IS" with no warranty or guarantees, expressed or implied, No operational assessments have been made by DPA Auctions on this item, it has been photographed ONLY.



#211 - Blaw-Knox Asphalt Paver (KMK647)

Blaw-Knox Asphalt Paver (KMK647), model PF115, diesel engine, auger speed, spray pump, left & right side extension control, 14.00-20DT tires, shows 945 hours. Notes: Item Location: Sioux City, IA 51105 Equipment Sold "AS IS, WHERE IS": All equipment/property is sold "AS IS, WHERE IS" with no warranty or guarantees, expressed or implied, No operational assessments have been made by DPA Auctions on this item, it has been photographed ONLY.



#212 - Fiat Allis FR12 Loader (KMK640)

Fiat Allis FR12 Loader (KMK640), articulating loader, Fiat diesel engine, HF, LF, N, LR transmission, enclosed cab with heat, some cracked glass, bucket and boom control, rear hitch, lights, 20.5 - 25 tires, shows 3460 hours. Notes: Item Location: Sioux City, IA 51105 Equipment Sold "AS IS, WHERE IS": All equipment/property is sold "AS IS, WHERE IS" with no warranty or guarantees, expressed or implied, No operational assessments have been made by DPA Auctions on this item, it has been photographed ONLY.



#213 - Broce Broom H15 Sweeper (KMK648)

Broce Broom H15 Sweeper (KMK648), Broce Broom, model H15, Ford gasoline engine, good broom, hydraulic controls, P265/ 75 R15 tires, shows 1523 hours. Notes: Item Location: Sioux City, IA 51105 Equipment Sold "AS IS, WHERE IS": All equipment/property is sold "AS IS, WHERE IS" with no warranty or guarantees, expressed or implied, No operational assessments have been made by DPA Auctions on this item, it has been photographed ONLY.



#214 - Chicago Pneumatic Portable Air Compressor (KMK646)

Chicago Pneumatic Portable Air Compressor (KMK646), model CPS 185, single axle, drop leg jack, ball hitch, ST205/ 75 R14 tires. Notes: Unit will run and pump air but has an air leak. Item Location: Sioux City, IA 51105 Equipment Sold "AS IS, WHERE IS": All equipment/property is sold "AS IS, WHERE IS" with no warranty or guarantees, expressed or implied, No operational assessments have been made by DPA Auctions on this item, it has been photographed ONLY.



#215 - Steel Flatbed (KMK638)

Steel Flatbed (KMK638), headache rack, steel floor, D rings, rear receiver hitch. Notes: Running gear is not included in this lot. Item Location: Sioux City, IA 51105 Equipment Sold "AS IS, WHERE IS": All equipment/property is sold "AS IS, WHERE IS" with no warranty or guarantees, expressed or implied, No operational assessments have been made by DPA Auctions on this item, it has been photographed ONLY.



#216 - 1988 Honda VT800 (KMK636)

1988 Honda VT800 (KMK636), Shadow, VT 800, 5 speed transmission, locking gas cap, detachable windshield, new Bridgestone Spitfire 11 front and rear tires, saddle bags included, shows 13,029 miles. Notes: Item Location: Ida Grove, IA 51445 Equipment Sold "AS IS, WHERE IS": All equipment/property is sold "AS IS, WHERE IS" with no warranty or guarantees, expressed or implied, No operational assessments have been made by DPA Auctions on this item, it has been photographed ONLY.



#217 - 1998 Ford XLT 4 X 4 Pickup (KMK637)

1998 Ford XLT 4 X 4 Pickup (KMK637), extended cab, XLT package, 4 x 4, 4.0 liter gas engine, automatic transmission, heat and air conditioning, upgraded radio with I Pod docking station, Bluetooth, cruise control, bed liner, tow package, new battery, V-Tek wheels, Goodyear Wrangler LT245/ 75 R16 tires. Notes: Item Location: Ida Grove, IA 51445 Equipment Sold "AS IS, WHERE IS": All equipment/property is sold "AS IS, WHERE IS" with no warranty or guarantees, expressed or implied, No operational assessments have been made by DPA Auctions on this item, it has been photographed ONLY.



#219 - 1998 Mack CH613 Day Cab Truck (PD977)

1998 Mack CH613 Day Cab Truck (PD977), E7 engine 350, 2090 9 speed transmission, am/fm radio, tandem axle, full screw, 11R24.5 tires, Mack rears, air ride, aluminum front wheels, steel rear wheels, ac/heat, single stack, wet kit, air slide, 5th wheel, shows 526,228 miles. Notes: Damage to left front fender. Item Location: Milton, KS 67106 Equipment Sold "AS IS, WHERE IS": All equipment/property is sold "AS IS, WHERE IS" with no warranty or guarantees, expressed or implied, No operational assessments have been made by DPA Auctions on this item, it has been photographed ONLY.



#220 - Hagie 472 Hi-Tractor Detasseler (CP595)

Hagie 472 Hi-Tractor Detasseler (CP595), gas engine, hydrostatic transmission, 4-row tassel chopping blades, shows 16 hours. Notes: Item Location: Pontiac, IL 61764 Equipment Sold "AS IS, WHERE IS": All equipment/property is sold "AS IS, WHERE IS" with no warranty or guarantees, expressed or implied, No operational assessments have been made by DPA Auctions on this item, it has been photographed ONLY.



#221 - 8-Row Tassel Puller (CP579)

8-Row Tassel Puller (CP579), fits M&W Detasslers. Notes: Item Location: Pontiac, IL 61764 Equipment Sold "AS IS, WHERE IS": All equipment/property is sold "AS IS, WHERE IS" with no warranty or guarantees, expressed or implied, No operational assessments have been made by DPA Auctions on this item, it has been photographed ONLY.



#222 - John Deere 1760NT Planter (CP580)

John Deere 1760NT Planter (CP580), 8 row, MaxEmerge XP, hydraulic markers, hydraulic lift, seed boxes, chemical boxes. Notes: Item Location: Pontiac, IL 61764 Equipment Sold "AS IS, WHERE IS": All equipment/property is sold "AS IS, WHERE IS" with no warranty or guarantees, expressed or implied, No operational assessments have been made by DPA Auctions on this item, it has been photographed ONLY.



#223 - John Deere 1750 Planter (CP581)

John Deere 1750 Planter (CP581), 6 row, MaxEmerge XP, hydraulic markers, hydraulic lift, seed boxes, chemical boxes. Notes: Item Location: Pontiac, IL 61764 Equipment Sold "AS IS, WHERE IS": All equipment/property is sold "AS IS, WHERE IS" with no warranty or guarantees, expressed or implied, No operational assessments have been made by DPA Auctions on this item, it has been photographed ONLY.



#224 - 2007 Hummer H3 (MH310)

2007 Hummer H3 (MH310), 3.7L I-5cyl engine, 242 h.p., 4-speed automatic transmission, am/fm CD radio stereo, power heated leather seats, power lumbar support, power windows, power locks, power sunroof, tires in good condition, 60% tread, 23 gallon fuel tank, shows 140985 miles. Notes: This vehicle is still driven daily, miles will vary. Item Location: Omaha, NE 68135 Equipment Sold "AS IS, WHERE IS": All equipment/property is sold "AS IS, WHERE IS" with no warranty or guarantees, expressed or implied, No operational assessments have been made by DPA Auctions on this item, it has been photographed ONLY.



#225 - Generac 15 KW Propane Generator (PZ0529)

Generac 15 KW Propane Generator (PZ0529), Generac model 00752-6 commercial grade propane generator, 1800 RPM, Fiat Industrial engine, block heater, liquid cooled, built in 200 Amp automatic transfer switch, single phase 120/240V, 125/62.5 amps, weather proof enclosure, shows 383 hours. Notes: Item Location: Springfield, IL 62703 Equipment Sold "AS IS, WHERE IS": All equipment/property is sold "AS IS, WHERE IS" with no warranty or guarantees, expressed or implied, No operational assessments have been made by DPA Auctions on this item, it has been photographed ONLY.



#226 - Generac 15 KW Propane Generator (PZ0530)

Generac 15 KW Propane Generator (PZ0530), Generac model 00752-4 commercial grade propane generator, 1800 RPM, Fiat Industrial engine, block heater, liquid cooled, built in 200 Amp automatic transfer switch, single phase 120/240V, 62.5 amps, weather proof enclosure, shows 78 hours. Notes: Item Location: Springfield, IL 62703 Equipment Sold "AS IS, WHERE IS": All equipment/property is sold "AS IS, WHERE IS" with no warranty or guarantees, expressed or implied, No operational assessments have been made by DPA Auctions on this item, it has been photographed ONLY.



#227 - 1973 Heil Transport Trailer (PZ0525)

1973 Heil Transport Trailer (PZ0525), 1973 Heil 6500 gallon aluminum transport trailer, 4 compartment (2500-1000-1000-2000), tandem axle, tires @ 40%. Notes: Item Location: Eagle Grove, IA 50533 Equipment Sold "AS IS, WHERE IS": All equipment/property is sold "AS IS, WHERE IS" with no warranty or guarantees, expressed or implied, No operational assessments have been made by DPA Auctions on this item, it has been photographed ONLY.



#228 - 1991 Mack CH600 Truck (PZ0526)

1991 Mack CH600 Truck (PZ0526), diesel engine, 10 speed transmission, heat, tandem axle, full screw, cheater axle, tires @ 30%. Notes: Item Location: Eagle Grove, IA 50533 Equipment Sold "AS IS, WHERE IS": All equipment/property is sold "AS IS, WHERE IS" with no warranty or guarantees, expressed or implied, No operational assessments have been made by DPA Auctions on this item, it has been photographed ONLY.



#229 - 1978 Dresser TD20E (KMK649)

1978 Dresser TD20E (KMK649), V8 diesel engine, powershift transmission, rops cab with heat, no cracks in glass, semi U blade, rear hitch, no leaks, well maintained low hour machine, shows 3620 hours. Notes: Item Location: Sioux City, IA 51105 Equipment Sold "AS IS, WHERE IS": All equipment/property is sold "AS IS, WHERE IS" with no warranty or guarantees, expressed or implied, No operational assessments have been made by DPA Auctions on this item, it has been photographed ONLY.



#230 - Take Out Cummins Engine and Transmission (KMK650)

Take Out Cummins Engine and Transmission (KMK650), 350 Cummins diesel engine, 13 speed manual transmission, came out of Diamond Rio, low hours on overhaul, in running condition when removed. Notes: Item Location: Norfolk, NE 68702 Equipment Sold "AS IS, WHERE IS": All equipment/property is sold "AS IS, WHERE IS" with no warranty or guarantees, expressed or implied, No operational assessments have been made by DPA Auctions on this item, it has been photographed ONLY.



#231 - Take Out Cummins Engine (KMK651)

Take Out Cummins Engine (KMK651), 250 Cummins diesel engine, came out of Diamond Rio, in running condition when removed. Notes: Item Location: Norfolk, NE 68702 Equipment Sold "AS IS, WHERE IS": All equipment/property is sold "AS IS, WHERE IS" with no warranty or guarantees, expressed or implied, No operational assessments have been made by DPA Auctions on this item, it has been photographed ONLY.



#232 - Take Out Cummins Engine (KMK652)

Take Out Cummins Engine (KMK652), 250 Cummins diesel engine, came out of Diamond Rio, in running condition when removed. Notes: Item Location: Norfolk, NE 68702 Equipment Sold "AS IS, WHERE IS": All equipment/property is sold "AS IS, WHERE IS" with no warranty or guarantees, expressed or implied, No operational assessments have been made by DPA Auctions on this item, it has been photographed ONLY.



#233 - Take Out Cummins Engine (KMK653)

Take Out Cummins Engine (KMK653), 250 Cummins diesel engine, came out of Diamond Rio, low hours on overhaul, in running condition when removed. Notes: Item Location: Norfolk, NE 68702 Equipment Sold "AS IS, WHERE IS": All equipment/property is sold "AS IS, WHERE IS" with no warranty or guarantees, expressed or implied, No operational assessments have been made by DPA Auctions on this item, it has been photographed ONLY.



#234 - Three (3) Delco- Remy Starters (KMK656)

Three (3) Delco- Remy Starters (KMK656), three (3) rebuilt starters, Delco-Remy, series 40mt, type 250, 12 volts, rotation cw. Notes: Item Location: Norfolk, NE 68702 Equipment Sold "AS IS, WHERE IS": All equipment/property is sold "AS IS, WHERE IS" with no warranty or guarantees, expressed or implied, No operational assessments have been made by DPA Auctions on this item, it has been photographed ONLY.



#235 - John Deere 1750 Planter (CP582)

John Deere 1750 Planter (CP582), 6 row, MaxEmerge XP, hydraulic markers, hydraulic lift, seed boxes, chemical boxes. Notes: Item Location: Pontiac, IL 61764 Equipment Sold "AS IS, WHERE IS": All equipment/property is sold "AS IS, WHERE IS" with no warranty or guarantees, expressed or implied, No operational assessments have been made by DPA Auctions on this item, it has been photographed ONLY.



#236 - John Deere 7000 Planter (CP585)

John Deere 7000 Planter (CP585), 6 row, hydraulic markers, hydraulic lift. Notes: Item Location: Pontiac, IL 61764 Equipment Sold "AS IS, WHERE IS": All equipment/property is sold "AS IS, WHERE IS" with no warranty or guarantees, expressed or implied, No operational assessments have been made by DPA Auctions on this item, it has been photographed ONLY.



#237 - Farmhand Dump Trailer (CP598)

Farmhand Dump Trailer (CP598), hydraulic cylinders, 11.25-2.8 tires. Notes: Item Location: Pontiac, IL 61764 Equipment Sold "AS IS, WHERE IS": All equipment/property is sold "AS IS, WHERE IS" with no warranty or guarantees, expressed or implied, No operational assessments have been made by DPA Auctions on this item, it has been photographed ONLY.



#238 - 3 Point Blade (CP587)

3 Point Blade (CP587), swivel blade. Notes: Item Location: Pontiac, IL 61764 Equipment Sold "AS IS, WHERE IS": All equipment/property is sold "AS IS, WHERE IS" with no warranty or guarantees, expressed or implied, No operational assessments have been made by DPA Auctions on this item, it has been photographed ONLY.



#239 - Neco Grain Cleaner (CP584)

Neco Grain Cleaner (CP584), Model 51A, portable, discharge auger. Notes: Item Location: Pontiac, IL 61764 Equipment Sold "AS IS, WHERE IS": All equipment/property is sold "AS IS, WHERE IS" with no warranty or guarantees, expressed or implied, No operational assessments have been made by DPA Auctions on this item, it has been photographed ONLY.



#240 - 5 Freestanding Panels (MH302)

5 Freestanding Panels (MH302), TH Custom Manufacturing Freestanding Panels, full frame design built from 2-7/8" pipe, 24ft long by 5'9" tall, 7/8 rod ran through the uprights to prevent sharp edges, bent legs to prevent panel from sliding and to allow sturdy placement, saddle cuts on all uprights, drain holes on all uprights to prevent rusting from within the pipe, double chains standard on all panels. Notes: Shipping available anywhere in the U.S at additional charge. Item Location: Canistota, SD 57012 Equipment Sold "AS IS, WHERE IS": All equipment/property is sold "AS IS, WHERE IS" with no warranty or guarantees, expressed or implied, No operational assessments have been made by DPA Auctions on this item, it has been photographed ONLY.



#241 - 5 Freestanding Panels (MH303)

5 Freestanding Panels (MH303), TH Custom Manufacturing Freestanding Panels, full frame design built from 2-7/8" pipe, 24ft long by 5'9" tall, 7/8 rod ran through the uprights to prevent sharp edges, bent legs to prevent panel from sliding and to allow sturdy placement, saddle cuts on all uprights, drain holes on all uprights to prevent rusting from within the pipe, double chains standard on all panels. Notes: Shipping available anywhere in the U.S at additional charge. Item Location: Canistota, SD 57012 Equipment Sold "AS IS, WHERE IS": All equipment/property is sold "AS IS, WHERE IS" with no warranty or guarantees, expressed or implied, No operational assessments have been made by DPA Auctions on this item, it has been photographed ONLY.



#242 - 5 Freestanding Panels (MH304)

5 Freestanding Panels (MH304), TH Custom Manufacturing Freestanding Panels, full frame design built from 2-7/8" pipe, 24ft long by 5'9" tall, 7/8 rod ran through the uprights to prevent sharp edges, bent legs to prevent panel from sliding and to allow sturdy placement, saddle cuts on all uprights, drain holes on all uprights to prevent rusting from within the pipe, double chains standard on all panels. Notes: Shipping available anywhere in the U.S at additional charge. Item Location: Canistota, SD 57012 Equipment Sold "AS IS, WHERE IS": All equipment/property is sold "AS IS, WHERE IS" with no warranty or guarantees, expressed or implied, No operational assessments have been made by DPA Auctions on this item, it has been photographed ONLY.



#243 - Tank Containment (DL377)

Tank Containment (DL377), Tank Containment Ultra 550 with drain, secondary containment for 500 and 550 gallon fuel and oil tanks, never used. Notes: Item Location: Seward, NE 68434 Equipment Sold "AS IS, WHERE IS": All equipment/property is sold "AS IS, WHERE IS" with no warranty or guarantees, expressed or implied, No operational assessments have been made by DPA Auctions on this item, it has been photographed ONLY.



#244 - Goodyear Trackman Tracks (DL391)

Goodyear Trackman Tracks (DL391), 1 pair of Goodyear Trackman tracks, model # 84157281, will fit NEW case quad tracks. Notes: Item Location: Algona, IA 50511 Equipment Sold "AS IS, WHERE IS": All equipment/property is sold "AS IS, WHERE IS" with no warranty or guarantees, expressed or implied, No operational assessments have been made by DPA Auctions on this item, it has been photographed ONLY.



#245 - Goodyear Trackman Tracks (DL389)

Goodyear Trackman Tracks (DL389), 1 pair of Goodyear Trackman tracks, model # 84157281, will fit NEW case quad tracks. Notes: Item Location: Algona, IA 50511 Equipment Sold "AS IS, WHERE IS": All equipment/property is sold "AS IS, WHERE IS" with no warranty or guarantees, expressed or implied, No operational assessments have been made by DPA Auctions on this item, it has been photographed ONLY.



#246 - Camoplast Tracks (DL390)

Camoplast Tracks (DL390), 1 pair of Camoplast tracks, model# 6593610, came off ATI tracks, believed to fit old Case quad tracks or 9370. Notes: Item Location: Algona, IA 50511 Equipment Sold "AS IS, WHERE IS": All equipment/property is sold "AS IS, WHERE IS" with no warranty or guarantees, expressed or implied, No operational assessments have been made by DPA Auctions on this item, it has been photographed ONLY.



#248 - 2016 Mainero MDD-100 Corn Head (ED652)

2016 Mainero MDD-100 Corn Head (ED652), fits Case or NH combine, any direction corn head, metal snouts, end row augers, picks up down corn, Harvest any row spacing, 31' long, shell corn like you cut beans, use your guidance-headsight. Notes: Specifications of this unit: combine adapter, end row augers, auto height control, non-chopping, hydraulic deck plates, field ready, single point hydraulic hookup, oil bath, outer side shield, standard rolls, 95% rolls remaining, height 88, width 7.5, weight 8,730. Item Location: Quincy, IL 62305 Equipment Sold "AS IS, WHERE IS": All equipment/property is sold "AS IS, WHERE IS" with no warranty or guarantees, expressed or implied, No operational assessments have been made by DPA Auctions on this item, it has been photographed ONLY.



#249 - 2016 Demo Mainero Corn Head (ED698)

2016 Demo Mainero Corn Head (ED698), fits John Deere combine, any direction corn head, metal snouts, end row augers, picks up down corn, harvests any row spacing, 31' long, shell corn like you cut beans, use your GPS-headsight. Notes: Item Location: Quincy, IL 62305 Equipment Sold "AS IS, WHERE IS": All equipment/property is sold "AS IS, WHERE IS" with no warranty or guarantees, expressed or implied, No operational assessments have been made by DPA Auctions on this item, it has been photographed ONLY.



#250 - John Deere 7000 Planter (CP586)

John Deere 7000 Planter (CP586), 6 row, hydraulic markers, hydraulic lift. Notes: Item Location: Pontiac, IL 61764 Equipment Sold "AS IS, WHERE IS": All equipment/property is sold "AS IS, WHERE IS" with no warranty or guarantees, expressed or implied, No operational assessments have been made by DPA Auctions on this item, it has been photographed ONLY.



#251 - John Deere 7100 3 Point Planter (CP589)

John Deere 7100 3 Point Planter (CP589), 6 row, hydraulic markers, hydraulic lift, storage cover. Notes: Item Location: Pontiac, IL 61764 Equipment Sold "AS IS, WHERE IS": All equipment/property is sold "AS IS, WHERE IS" with no warranty or guarantees, expressed or implied, No operational assessments have been made by DPA Auctions on this item, it has been photographed ONLY.



#252 - Woods Rotary Mower (CP592)

Woods Rotary Mower (CP592), Model M4, PTO, dual gauge wheels. Notes: Item Location: Pontiac, IL 61764 Equipment Sold "AS IS, WHERE IS": All equipment/property is sold "AS IS, WHERE IS" with no warranty or guarantees, expressed or implied, No operational assessments have been made by DPA Auctions on this item, it has been photographed ONLY.



#253 - Woods Rotary Mower (CP597)

Woods Rotary Mower (CP597), Model M4, PTO shaft. Notes: Item Location: Pontiac, IL 61764 Equipment Sold "AS IS, WHERE IS": All equipment/property is sold "AS IS, WHERE IS" with no warranty or guarantees, expressed or implied, No operational assessments have been made by DPA Auctions on this item, it has been photographed ONLY.



#254 - 1983 Redi Haul 7 Ton Equipment Trailer (KMK645)

1983 Redi Haul 7 Ton Equipment Trailer (KMK645), T7 equipment trailer, tandem axle, wood deck, fold up ramps, drop leg jack, ball hitch, connector and lights, 7.00 R15 tires. Notes: Item Location: Sioux City, IA 51105 Equipment Sold "AS IS, WHERE IS": All equipment/property is sold "AS IS, WHERE IS" with no warranty or guarantees, expressed or implied, No operational assessments have been made by DPA Auctions on this item, it has been photographed ONLY.



#255 - 1999 Isuzu Utility Truck (KMK641)

1999 Isuzu Utility Truck (KMK641), turbo intercooled diesel, Isuzu OHC diesel engine, automatic transmission, am/fm/cd radio, top cab vent, heat and air conditioning, 3 door utility bed, LT215/ 85 R16 tires, unit B98. Notes: Item Location: Sioux City, IA 51105 Equipment Sold "AS IS, WHERE IS": All equipment/property is sold "AS IS, WHERE IS" with no warranty or guarantees, expressed or implied, No operational assessments have been made by DPA Auctions on this item, it has been photographed ONLY.



#256 - 1995 Isuzu Utility Truck (KMK642)

1995 Isuzu Utility Truck (KMK642), Isuzu 4 cyl. OHC diesel engine, manual transmission, am/fm/cassette radio, top cab vent, heat and air conditioning, LT245/ 75 R16 tires, shows 154,728 miles. Notes: Engine is blown- non runner. Item Location: Sioux City, IA 51105 Equipment Sold "AS IS, WHERE IS": All equipment/property is sold "AS IS, WHERE IS" with no warranty or guarantees, expressed or implied, No operational assessments have been made by DPA Auctions on this item, it has been photographed ONLY.



#257 - John Deere 7100 3 Point Planter (CP600)

John Deere 7100 3 Point Planter (CP600), 6 row, hydraulic markers, hydraulic lift. Notes: Item Location: Pontiac, IL 61764 Equipment Sold "AS IS, WHERE IS": All equipment/property is sold "AS IS, WHERE IS" with no warranty or guarantees, expressed or implied, No operational assessments have been made by DPA Auctions on this item, it has been photographed ONLY.



#258 - Glencoe 3 Point Cultivator (CP593)

Glencoe 3 Point Cultivator (CP593), 6 row, hydraulic wings, 4 crop shields. Notes: Item Location: Pontiac, IL 61764 Equipment Sold "AS IS, WHERE IS": All equipment/property is sold "AS IS, WHERE IS" with no warranty or guarantees, expressed or implied, No operational assessments have been made by DPA Auctions on this item, it has been photographed ONLY.



#259 - 6-Row Cultivator (CP588)

6-Row Cultivator (CP588), hydraulic wings, 3 point lift. Notes: Item Location: Pontiac, IL 61764 Equipment Sold "AS IS, WHERE IS": All equipment/property is sold "AS IS, WHERE IS" with no warranty or guarantees, expressed or implied, No operational assessments have been made by DPA Auctions on this item, it has been photographed ONLY.



#260 - John Deere 4430 Tractor (CP570)

John Deere 4430 Tractor (CP570), diesel engine, 16 speed transmission, 6 speed reverse, cab, heat, air conditioning, Am/Fm radio, PTO, 3 point, drawbar, 2 port hydraulics, front weights, 18.4-38 rear tires, shows 857 hours. Notes: Item Location: Pontiac, IL 61764 Equipment Sold "AS IS, WHERE IS": All equipment/property is sold "AS IS, WHERE IS" with no warranty or guarantees, expressed or implied, No operational assessments have been made by DPA Auctions on this item, it has been photographed ONLY.



#261 - John Deere 850 MFWD Tractor (CP571)

John Deere 850 MFWD Tractor (CP571), diesel engine, 6 speed transmission, 2 speed reverse, canopy, PTO, 3 point, drawbar, 2 port hydraulics, 11.2-24 rear tires, 7-14 R1 front tires, shows 2,165 hours. Notes: Item Location: Pontiac, IL 61764 Equipment Sold "AS IS, WHERE IS": All equipment/property is sold "AS IS, WHERE IS" with no warranty or guarantees, expressed or implied, No operational assessments have been made by DPA Auctions on this item, it has been photographed ONLY.



#262 - Ford 7710 Tractor (CP572)

Ford 7710 Tractor (CP572), Ford diesel engine, 8 speed transmission, 4 speed reverse, cab, heat, air conditioning, PTO, 3 point, drawbar, 3 port hydraulics, 300/95R45 tires, extra duals, hubs, shows 3,511 hours. Notes: Item Location: Pontiac, IL 61764 Equipment Sold "AS IS, WHERE IS": All equipment/property is sold "AS IS, WHERE IS" with no warranty or guarantees, expressed or implied, No operational assessments have been made by DPA Auctions on this item, it has been photographed ONLY.



#263 - John Deere 4430 Tractor (CP590)

John Deere 4430 Tractor (CP590), John Deere diesel engine, 16 speed transmission, 2 speed reverse, cab, heat, air conditioning, front weights, PTO, 3 point, drawbar, 2 port hydraulics, shows 2,661 hours. Notes: Item Location: Pontiac, IL 61764 Equipment Sold "AS IS, WHERE IS": All equipment/property is sold "AS IS, WHERE IS" with no warranty or guarantees, expressed or implied, No operational assessments have been made by DPA Auctions on this item, it has been photographed ONLY.



#264 - John Deere 1530 Tractor (CP591)

John Deere 1530 Tractor (CP591), John Deere diesel engine, 8 speed transmission, 4 speed reverse, canopy, front weights, PTO, 3 point, drawbar, single port hydraulics, shows 490 hours. Notes: Item Location: Pontiac, IL 61764 Equipment Sold "AS IS, WHERE IS": All equipment/property is sold "AS IS, WHERE IS" with no warranty or guarantees, expressed or implied, No operational assessments have been made by DPA Auctions on this item, it has been photographed ONLY.



#265 - Stand (CP578)

Stand (CP578), fits any M&W Detassele Head. Notes: Item Location: Pontiac, IL 61764 Equipment Sold "AS IS, WHERE IS": All equipment/property is sold "AS IS, WHERE IS" with no warranty or guarantees, expressed or implied, No operational assessments have been made by DPA Auctions on this item, it has been photographed ONLY.



#266 - Blu-Jet LandWalker Anhydrous Toolbar (NP7260)

Blu-Jet LandWalker Anhydrous Toolbar (NP7260), 16 knife, coulters, double disc sealers, hydraulic wings, Blu-Jet GDI 200 ground drive pump (S/N 02070), walking tandems, 11L-15 tires. Notes: Item Location: Falls City, NE 68355 Equipment Sold "AS IS, WHERE IS": All equipment/property is sold "AS IS, WHERE IS" with no warranty or guarantees, expressed or implied, No operational assessments have been made by DPA Auctions on this item, it has been photographed ONLY.



#267 - Corken Gas Compressor (NP7337B)

Corken Gas Compressor (NP7337B), Model 290-K3FBA, S/N KC-12111, cage, Dayton 5HP electric motor. Notes: Item Location: Falls City, NE 68355 Equipment Sold "AS IS, WHERE IS": All equipment/property is sold "AS IS, WHERE IS" with no warranty or guarantees, expressed or implied, No operational assessments have been made by DPA Auctions on this item, it has been photographed ONLY.



#268 - Corken Gas Compressor (NP7341)

Corken Gas Compressor (NP7341), Model 290K3FBA. Notes: Item Location: Falls City, NE 68355 Equipment Sold "AS IS, WHERE IS": All equipment/property is sold "AS IS, WHERE IS" with no warranty or guarantees, expressed or implied, No operational assessments have been made by DPA Auctions on this item, it has been photographed ONLY.



#269 - NH3 Nurse Tank (NP7350, Tank 17)

NH3 Nurse Tank (NP7350, Tank 17), 1,415 gallon capacity, top front fill, Pryor style gear, 16.5L-16.1 flotation tires, water tank, data plate, Nat'l Board #97515. Notes: Item Location: Falls City, NE 68355 Equipment Sold "AS IS, WHERE IS": All equipment/property is sold "AS IS, WHERE IS" with no warranty or guarantees, expressed or implied, No operational assessments have been made by DPA Auctions on this item, it has been photographed ONLY.



#270 - NRW Mfg. Hopper Bin (NP7241)

NRW Mfg. Hopper Bin (NP7241), Model 12025E, 1,470 bushel capacity, outside ladder, 6 leg stand. Notes: Item Location: Falls City, NE 68355 Equipment Sold "AS IS, WHERE IS": All equipment/property is sold "AS IS, WHERE IS" with no warranty or guarantees, expressed or implied, No operational assessments have been made by DPA Auctions on this item, it has been photographed ONLY.



#271 - Standard Conveyor Co. Incline Belt Conveyor (NP7303)

Standard Conveyor Co. Incline Belt Conveyor (NP7303), approx. 12" belt, electric drive. Notes: Item Location: Falls City, NE 68355 Equipment Sold "AS IS, WHERE IS": All equipment/property is sold "AS IS, WHERE IS" with no warranty or guarantees, expressed or implied, No operational assessments have been made by DPA Auctions on this item, it has been photographed ONLY.



#272 - Dive Over Incline Belt Conveyor (NP7324)

Dive Over Incline Belt Conveyor (NP7324), portable, 18" chain belt, Baldor 5HP three phase electric motor. Notes: Item Location: Falls City, NE 68355 Equipment Sold "AS IS, WHERE IS": All equipment/property is sold "AS IS, WHERE IS" with no warranty or guarantees, expressed or implied, No operational assessments have been made by DPA Auctions on this item, it has been photographed ONLY.



#273 - Speed King Dive Over Belt Conveyor (NP7337)

Speed King Dive Over Belt Conveyor (NP7337), 16" belt, three phase electric motor. Notes: Item Location: Falls City, NE 68355 Equipment Sold "AS IS, WHERE IS": All equipment/property is sold "AS IS, WHERE IS" with no warranty or guarantees, expressed or implied, No operational assessments have been made by DPA Auctions on this item, it has been photographed ONLY.



#274 - Fuel Tank (NP7262)

Fuel Tank (NP7262), approx. 1,000 gallon capacity, tank has a leak. Notes: Used for diesel fuel. Item Location: Falls City, NE 68355 Equipment Sold "AS IS, WHERE IS": All equipment/property is sold "AS IS, WHERE IS" with no warranty or guarantees, expressed or implied, No operational assessments have been made by DPA Auctions on this item, it has been photographed ONLY.



#275 - Fuel Tank (NP7261)

Fuel Tank (NP7261), approx. 1,000 gallon capacity, tank has a leak. Notes: Used for diesel fuel. Item Location: Falls City, NE 68355 Equipment Sold "AS IS, WHERE IS": All equipment/property is sold "AS IS, WHERE IS" with no warranty or guarantees, expressed or implied, No operational assessments have been made by DPA Auctions on this item, it has been photographed ONLY.



#276 - Fuel Tank (NP7263)

Fuel Tank (NP7263), approx. 1,000 gallon capacity, tank has a leak. Notes: Used for diesel fuel. Item Location: Falls City, NE 68355 Equipment Sold "AS IS, WHERE IS": All equipment/property is sold "AS IS, WHERE IS" with no warranty or guarantees, expressed or implied, No operational assessments have been made by DPA Auctions on this item, it has been photographed ONLY.



#277 - Auger Wagon (NP7298)

Auger Wagon (NP7298), pull type, single axle, rear auger, 540 PTO, 7.00-15 tires, manual tarp. Notes: Item Location: Falls City, NE 68355 Equipment Sold "AS IS, WHERE IS": All equipment/property is sold "AS IS, WHERE IS" with no warranty or guarantees, expressed or implied, No operational assessments have been made by DPA Auctions on this item, it has been photographed ONLY.



#278 - Pallet Grain Parts (NP7264)

Pallet Grain Parts (NP7264), assorted grain floor flashing and misc grain components. Notes: Item Location: Falls City, NE 68355 Equipment Sold "AS IS, WHERE IS": All equipment/property is sold "AS IS, WHERE IS" with no warranty or guarantees, expressed or implied, No operational assessments have been made by DPA Auctions on this item, it has been photographed ONLY.



#279 - Pallet Floor Flashing (NP7266)

Pallet Floor Flashing (NP7266), assorted grain floor flashing. Notes: Item Location: Falls City, NE 68355 Equipment Sold "AS IS, WHERE IS": All equipment/property is sold "AS IS, WHERE IS" with no warranty or guarantees, expressed or implied, No operational assessments have been made by DPA Auctions on this item, it has been photographed ONLY.



#280 - Slap Stands/Floor Supports (NP7267)

Slap Stands/Floor Supports (NP7267), assorted 12" slap stands/floor supports. Notes: Item Location: Falls City, NE 68355 Equipment Sold "AS IS, WHERE IS": All equipment/property is sold "AS IS, WHERE IS" with no warranty or guarantees, expressed or implied, No operational assessments have been made by DPA Auctions on this item, it has been photographed ONLY.



#281 - Slap Stands/Floor Supports (NP7268)

Slap Stands/Floor Supports (NP7268), assorted 12" and 16" slap stands/floor supports. Notes: Item Location: Falls City, NE 68355 Equipment Sold "AS IS, WHERE IS": All equipment/property is sold "AS IS, WHERE IS" with no warranty or guarantees, expressed or implied, No operational assessments have been made by DPA Auctions on this item, it has been photographed ONLY.



#282 - Spiral Step Parts (NP7269)

Spiral Step Parts (NP7269), miscellaneous parts for spiral steps for the side of a grain bin. Notes: Item Location: Falls City, NE 68355 Equipment Sold "AS IS, WHERE IS": All equipment/property is sold "AS IS, WHERE IS" with no warranty or guarantees, expressed or implied, No operational assessments have been made by DPA Auctions on this item, it has been photographed ONLY.



#283 - Spiral Step Parts (NP7270)

Spiral Step Parts (NP7270), miscellaneous parts for spiral steps for the side of a grain bin. Notes: Item Location: Falls City, NE 68355 Equipment Sold "AS IS, WHERE IS": All equipment/property is sold "AS IS, WHERE IS" with no warranty or guarantees, expressed or implied, No operational assessments have been made by DPA Auctions on this item, it has been photographed ONLY.



#284 - Spiral Step Parts (NP7271)

Spiral Step Parts (NP7271), miscellaneous parts for spiral steps for the side of a grain bin. Notes: Item Location: Falls City, NE 68355 Equipment Sold "AS IS, WHERE IS": All equipment/property is sold "AS IS, WHERE IS" with no warranty or guarantees, expressed or implied, No operational assessments have been made by DPA Auctions on this item, it has been photographed ONLY.



#285 - Pallet Grain Parts (NP7276)

Pallet Grain Parts (NP7276), roof vent and misc. grain parts and hardware. Notes: Item Location: Falls City, NE 68355 Equipment Sold "AS IS, WHERE IS": All equipment/property is sold "AS IS, WHERE IS" with no warranty or guarantees, expressed or implied, No operational assessments have been made by DPA Auctions on this item, it has been photographed ONLY.



#286 - Bin Sheets (NP7283)

Bin Sheets (NP7283), (1) standard and (1) galvanized sheet. Notes: Item Location: Falls City, NE 68355 Equipment Sold "AS IS, WHERE IS": All equipment/property is sold "AS IS, WHERE IS" with no warranty or guarantees, expressed or implied, No operational assessments have been made by DPA Auctions on this item, it has been photographed ONLY.



#287 - NECO Track Brackets (NP7275)

NECO Track Brackets (NP7275), and miscellaneous parts. Notes: Item Location: Falls City, NE 68355 Equipment Sold "AS IS, WHERE IS": All equipment/property is sold "AS IS, WHERE IS" with no warranty or guarantees, expressed or implied, No operational assessments have been made by DPA Auctions on this item, it has been photographed ONLY.



#288 - LGI Floor Supports (NP7274)

LGI Floor Supports (NP7274), 12" LGI floor supports. Notes: Item Location: Falls City, NE 68355 Equipment Sold "AS IS, WHERE IS": All equipment/property is sold "AS IS, WHERE IS" with no warranty or guarantees, expressed or implied, No operational assessments have been made by DPA Auctions on this item, it has been photographed ONLY.



#289 - LGI Floor Supports (NP7273)

LGI Floor Supports (NP7273), 15 7/8" LGI floor supports. Notes: Item Location: Falls City, NE 68355 Equipment Sold "AS IS, WHERE IS": All equipment/property is sold "AS IS, WHERE IS" with no warranty or guarantees, expressed or implied, No operational assessments have been made by DPA Auctions on this item, it has been photographed ONLY.



#290 - Pallet Shelving (NP7272)

Pallet Shelving (NP7272), miscellaneous parts for pallet shelving. Notes: Item Location: Falls City, NE 68355 Equipment Sold "AS IS, WHERE IS": All equipment/property is sold "AS IS, WHERE IS" with no warranty or guarantees, expressed or implied, No operational assessments have been made by DPA Auctions on this item, it has been photographed ONLY.



#291 - Pallet Grain Parts (NP7277)

Pallet Grain Parts (NP7277), 8" spouts and miscellaneous grain bin parts. Notes: Item Location: Falls City, NE 68355 Equipment Sold "AS IS, WHERE IS": All equipment/property is sold "AS IS, WHERE IS" with no warranty or guarantees, expressed or implied, No operational assessments have been made by DPA Auctions on this item, it has been photographed ONLY.



#292 - Sudenga & Sukup Heads (NP7279)

Sudenga & Sukup Heads (NP7279), assorted Sudenga & Sukup 8" straight out heads. Notes: Item Location: Falls City, NE 68355 Equipment Sold "AS IS, WHERE IS": All equipment/property is sold "AS IS, WHERE IS" with no warranty or guarantees, expressed or implied, No operational assessments have been made by DPA Auctions on this item, it has been photographed ONLY.



#293 - Sudenga Heads (NP7280)

Sudenga Heads (NP7280), assorted Sudenga 8" straight out heads. Notes: Item Location: Falls City, NE 68355 Equipment Sold "AS IS, WHERE IS": All equipment/property is sold "AS IS, WHERE IS" with no warranty or guarantees, expressed or implied, No operational assessments have been made by DPA Auctions on this item, it has been photographed ONLY.



#294 - Conductor Sleeves (NP7281)

Conductor Sleeves (NP7281), assorted 8" conductor sleeves. Notes: Item Location: Falls City, NE 68355 Equipment Sold "AS IS, WHERE IS": All equipment/property is sold "AS IS, WHERE IS" with no warranty or guarantees, expressed or implied, No operational assessments have been made by DPA Auctions on this item, it has been photographed ONLY.



#295 - Grain Bin Ladder Parts (NP7282)

Grain Bin Ladder Parts (NP7282), parts for outside grain bin ladder. Notes: Item Location: Falls City, NE 68355 Equipment Sold "AS IS, WHERE IS": All equipment/property is sold "AS IS, WHERE IS" with no warranty or guarantees, expressed or implied, No operational assessments have been made by DPA Auctions on this item, it has been photographed ONLY.



#296 - Grain Parts (NP7287)

Grain Parts (NP7287), spider legs & misc. NECO track brackets. Notes: Item Location: Falls City, NE 68355 Equipment Sold "AS IS, WHERE IS": All equipment/property is sold "AS IS, WHERE IS" with no warranty or guarantees, expressed or implied, No operational assessments have been made by DPA Auctions on this item, it has been photographed ONLY.



#297 - Hutchinson Heads (NP7288)

Hutchinson Heads (NP7288), Hutchinson 8" 25 degree heads. Notes: Item Location: Falls City, NE 68355 Equipment Sold "AS IS, WHERE IS": All equipment/property is sold "AS IS, WHERE IS" with no warranty or guarantees, expressed or implied, No operational assessments have been made by DPA Auctions on this item, it has been photographed ONLY.



#298 - Grain Intermediates (NP7289)

Grain Intermediates (NP7289), 6' NECO intermediates and 8" Hutchinson intermediates. Notes: Item Location: Falls City, NE 68355 Equipment Sold "AS IS, WHERE IS": All equipment/property is sold "AS IS, WHERE IS" with no warranty or guarantees, expressed or implied, No operational assessments have been made by DPA Auctions on this item, it has been photographed ONLY.



#299 - NECO Wall Kits (NP7290)

NECO Wall Kits (NP7290), 8" NECO wall kits and miscellaneous hardware/parts. Notes: Item Location: Falls City, NE 68355 Equipment Sold "AS IS, WHERE IS": All equipment/property is sold "AS IS, WHERE IS" with no warranty or guarantees, expressed or implied, No operational assessments have been made by DPA Auctions on this item, it has been photographed ONLY.



#300 - Floor Supports (NP7292)

Floor Supports (NP7292), assorted floor supports of various sizes. Notes: Item Location: Falls City, NE 68355 Equipment Sold "AS IS, WHERE IS": All equipment/property is sold "AS IS, WHERE IS" with no warranty or guarantees, expressed or implied, No operational assessments have been made by DPA Auctions on this item, it has been photographed ONLY.



#301 - Floor Supports (NP7293)

Floor Supports (NP7293), assorted floor supports of various sizes and manhole lid. Notes: Item Location: Falls City, NE 68355 Equipment Sold "AS IS, WHERE IS": All equipment/property is sold "AS IS, WHERE IS" with no warranty or guarantees, expressed or implied, No operational assessments have been made by DPA Auctions on this item, it has been photographed ONLY.



#302 - NECO Belt Guard Shields (NP7286)

NECO Belt Guard Shields (NP7286), various NECO belt guard shields. Notes: Item Location: Falls City, NE 68355 Equipment Sold "AS IS, WHERE IS": All equipment/property is sold "AS IS, WHERE IS" with no warranty or guarantees, expressed or implied, No operational assessments have been made by DPA Auctions on this item, it has been photographed ONLY.



#303 - Sleeves (NP7284)

Sleeves (NP7284), assorted 8" x 15" connecting sleeves. Notes: Item Location: Falls City, NE 68355 Equipment Sold "AS IS, WHERE IS": All equipment/property is sold "AS IS, WHERE IS" with no warranty or guarantees, expressed or implied, No operational assessments have been made by DPA Auctions on this item, it has been photographed ONLY.



#304 - Auger & Parts (NP7285)

Auger & Parts (NP7285), auger and miscellaneous grain parts. Notes: Item Location: Falls City, NE 68355 Equipment Sold "AS IS, WHERE IS": All equipment/property is sold "AS IS, WHERE IS" with no warranty or guarantees, expressed or implied, No operational assessments have been made by DPA Auctions on this item, it has been photographed ONLY.



#305 - Bin Sheets & Cover (NP7304)

Bin Sheets & Cover (NP7304), bin sheets and manhole cover. Notes: Item Location: Falls City, NE 68355 Equipment Sold "AS IS, WHERE IS": All equipment/property is sold "AS IS, WHERE IS" with no warranty or guarantees, expressed or implied, No operational assessments have been made by DPA Auctions on this item, it has been photographed ONLY.



#306 - Bin of Scrap Metal (NP7310)

Bin of Scrap Metal (NP7310), bin of assorted grain parts and scrap metal. Notes: Item Location: Falls City, NE 68355 Equipment Sold "AS IS, WHERE IS": All equipment/property is sold "AS IS, WHERE IS" with no warranty or guarantees, expressed or implied, No operational assessments have been made by DPA Auctions on this item, it has been photographed ONLY.



#307 - Bin of Augers & Scrap Metal (NP7307)

Bin of Augers & Scrap Metal (NP7307), bin of assorted augers and scrap metal. Notes: Item Location: Falls City, NE 68355 Equipment Sold "AS IS, WHERE IS": All equipment/property is sold "AS IS, WHERE IS" with no warranty or guarantees, expressed or implied, No operational assessments have been made by DPA Auctions on this item, it has been photographed ONLY.



#308 - Bin of Scrap Metal (NP7308)

Bin of Scrap Metal (NP7308), bin of assorted scrap metal, SHURflo electronic flow meter. Notes: Item Location: Falls City, NE 68355 Equipment Sold "AS IS, WHERE IS": All equipment/property is sold "AS IS, WHERE IS" with no warranty or guarantees, expressed or implied, No operational assessments have been made by DPA Auctions on this item, it has been photographed ONLY.



#309 - Bin of Scrap Metal (NP7309)

Bin of Scrap Metal (NP7309), bin of assorted scrap metal and grain parts. Notes: Item Location: Falls City, NE 68355 Equipment Sold "AS IS, WHERE IS": All equipment/property is sold "AS IS, WHERE IS" with no warranty or guarantees, expressed or implied, No operational assessments have been made by DPA Auctions on this item, it has been photographed ONLY.



#310 - (2) Bins of Scrap Metal (NP7312)

(2) Bins of Scrap Metal (NP7312), (2) bins of assorted scrap metal and grain parts, lumber, flashing. Notes: Item Location: Falls City, NE 68355 Equipment Sold "AS IS, WHERE IS": All equipment/property is sold "AS IS, WHERE IS" with no warranty or guarantees, expressed or implied, No operational assessments have been made by DPA Auctions on this item, it has been photographed ONLY.



#311 - LGI Floor Supports (NP7317)

LGI Floor Supports (NP7317), LGI 12" doubles and misc. floor supports. Notes: Item Location: Falls City, NE 68355 Equipment Sold "AS IS, WHERE IS": All equipment/property is sold "AS IS, WHERE IS" with no warranty or guarantees, expressed or implied, No operational assessments have been made by DPA Auctions on this item, it has been photographed ONLY.



#312 - (4) Tube Jacks (NP7314)

(4) Tube Jacks (NP7314), (4) tube jacks, adjustable height. floor supports. Notes: Item Location: Falls City, NE 68355 Equipment Sold "AS IS, WHERE IS": All equipment/property is sold "AS IS, WHERE IS" with no warranty or guarantees, expressed or implied, No operational assessments have been made by DPA Auctions on this item, it has been photographed ONLY.



#313 - Bin Sheets (NP7311)

Bin Sheets (NP7311), assorted bin sheets, various lengths. Notes: Item Location: Falls City, NE 68355 Equipment Sold "AS IS, WHERE IS": All equipment/property is sold "AS IS, WHERE IS" with no warranty or guarantees, expressed or implied, No operational assessments have been made by DPA Auctions on this item, it has been photographed ONLY.



#314 - Scrap Iron (NP7323)

Scrap Iron (NP7323), box of scrap iron. Notes: Item Location: Falls City, NE 68355 Equipment Sold "AS IS, WHERE IS": All equipment/property is sold "AS IS, WHERE IS" with no warranty or guarantees, expressed or implied, No operational assessments have been made by DPA Auctions on this item, it has been photographed ONLY.



#315 - Compressor & Hydraulic Tank (NP7313)

Compressor & Hydraulic Tank (NP7313), Corken compressor, pump and hydraulic tank. Notes: Item Location: Falls City, NE 68355 Equipment Sold "AS IS, WHERE IS": All equipment/property is sold "AS IS, WHERE IS" with no warranty or guarantees, expressed or implied, No operational assessments have been made by DPA Auctions on this item, it has been photographed ONLY.



#316 - Wall Kits (NP7294)

Wall Kits (NP7294), 8" wall kits, NECO guard shields and misc grain parts. Notes: Item Location: Falls City, NE 68355 Equipment Sold "AS IS, WHERE IS": All equipment/property is sold "AS IS, WHERE IS" with no warranty or guarantees, expressed or implied, No operational assessments have been made by DPA Auctions on this item, it has been photographed ONLY.



#317 - Under Car Auger (NP7300)

Under Car Auger (NP7300), electric motor. Notes: Item Location: Falls City, NE 68355 Equipment Sold "AS IS, WHERE IS": All equipment/property is sold "AS IS, WHERE IS" with no warranty or guarantees, expressed or implied, No operational assessments have been made by DPA Auctions on this item, it has been photographed ONLY.



#318 - Floor Supports (NP7320)

Floor Supports (NP7320), 15" and 17" floor supports. Notes: Item Location: Falls City, NE 68355 Equipment Sold "AS IS, WHERE IS": All equipment/property is sold "AS IS, WHERE IS" with no warranty or guarantees, expressed or implied, No operational assessments have been made by DPA Auctions on this item, it has been photographed ONLY.



#319 - Parts Pallet (NP7315)

Parts Pallet (NP7315), pallet of misc. parts, U-bolts, flashing, adhesive. Notes: Item Location: Falls City, NE 68355 Equipment Sold "AS IS, WHERE IS": All equipment/property is sold "AS IS, WHERE IS" with no warranty or guarantees, expressed or implied, No operational assessments have been made by DPA Auctions on this item, it has been photographed ONLY.



#320 - Flashing (NP7316)

Flashing (NP7316), assorted bin flashing. Notes: Item Location: Falls City, NE 68355 Equipment Sold "AS IS, WHERE IS": All equipment/property is sold "AS IS, WHERE IS" with no warranty or guarantees, expressed or implied, No operational assessments have been made by DPA Auctions on this item, it has been photographed ONLY.



#321 - Bin Parts (NP7305)

Bin Parts (NP7305), pallet of assorted bin parts. Notes: Item Location: Falls City, NE 68355 Equipment Sold "AS IS, WHERE IS": All equipment/property is sold "AS IS, WHERE IS" with no warranty or guarantees, expressed or implied, No operational assessments have been made by DPA Auctions on this item, it has been photographed ONLY.



#322 - Bin Wall (NP7302)

Bin Wall (NP7302), tie down bin wall and misc. parts. Notes: Item Location: Falls City, NE 68355 Equipment Sold "AS IS, WHERE IS": All equipment/property is sold "AS IS, WHERE IS" with no warranty or guarantees, expressed or implied, No operational assessments have been made by DPA Auctions on this item, it has been photographed ONLY.



#323 - Sudenga Head & Hopper (NP7301)

Sudenga Head & Hopper (NP7301), 8" Sudenga head and hopper. Notes: Item Location: Falls City, NE 68355 Equipment Sold "AS IS, WHERE IS": All equipment/property is sold "AS IS, WHERE IS" with no warranty or guarantees, expressed or implied, No operational assessments have been made by DPA Auctions on this item, it has been photographed ONLY.



#324 - Conductor Sleeves (NP7306)

Conductor Sleeves (NP7306), misc. conductor sleeves and misc. bin parts. Notes: Item Location: Falls City, NE 68355 Equipment Sold "AS IS, WHERE IS": All equipment/property is sold "AS IS, WHERE IS" with no warranty or guarantees, expressed or implied, No operational assessments have been made by DPA Auctions on this item, it has been photographed ONLY.



#325 - Pallet of Grain Parts (NP7254A)

Pallet of Grain Parts (NP7254A), spouting parts. Notes: Item Location: Falls City, NE 68355 Equipment Sold "AS IS, WHERE IS": All equipment/property is sold "AS IS, WHERE IS" with no warranty or guarantees, expressed or implied, No operational assessments have been made by DPA Auctions on this item, it has been photographed ONLY.



#326 - Grain Bin Ladder Parts (NP7333)

Grain Bin Ladder Parts (NP7333), parts for outside grain bin ladder. Notes: Item Location: Falls City, NE 68355 Equipment Sold "AS IS, WHERE IS": All equipment/property is sold "AS IS, WHERE IS" with no warranty or guarantees, expressed or implied, No operational assessments have been made by DPA Auctions on this item, it has been photographed ONLY.



#327 - LGI Floor Supports (NP7329)

LGI Floor Supports (NP7329), 19" LGI floor supports. Notes: Item Location: Falls City, NE 68355 Equipment Sold "AS IS, WHERE IS": All equipment/property is sold "AS IS, WHERE IS" with no warranty or guarantees, expressed or implied, No operational assessments have been made by DPA Auctions on this item, it has been photographed ONLY.



#328 - LGI Floor Supports (NP7332)

LGI Floor Supports (NP7332), 19" LGI double floor supports. Notes: Item Location: Falls City, NE 68355 Equipment Sold "AS IS, WHERE IS": All equipment/property is sold "AS IS, WHERE IS" with no warranty or guarantees, expressed or implied, No operational assessments have been made by DPA Auctions on this item, it has been photographed ONLY.



#329 - LGI Floor Supports (NP7331)

LGI Floor Supports (NP7331), 16" LGI floor supports. Notes: Item Location: Falls City, NE 68355 Equipment Sold "AS IS, WHERE IS": All equipment/property is sold "AS IS, WHERE IS" with no warranty or guarantees, expressed or implied, No operational assessments have been made by DPA Auctions on this item, it has been photographed ONLY.



#330 - LGI Floor Supports (NP7318)

LGI Floor Supports (NP7318), 12" & 15" LGI floor supports. Notes: Item Location: Falls City, NE 68355 Equipment Sold "AS IS, WHERE IS": All equipment/property is sold "AS IS, WHERE IS" with no warranty or guarantees, expressed or implied, No operational assessments have been made by DPA Auctions on this item, it has been photographed ONLY.



#331 - LGI Floor Supports (NP7330)

LGI Floor Supports (NP7330), 12" & 17" LGI floor supports. Notes: Item Location: Falls City, NE 68355 Equipment Sold "AS IS, WHERE IS": All equipment/property is sold "AS IS, WHERE IS" with no warranty or guarantees, expressed or implied, No operational assessments have been made by DPA Auctions on this item, it has been photographed ONLY.



#332 - LGI Floor Supports (NP7319)

LGI Floor Supports (NP7319), 18" LGI floor supports. Notes: Item Location: Falls City, NE 68355 Equipment Sold "AS IS, WHERE IS": All equipment/property is sold "AS IS, WHERE IS" with no warranty or guarantees, expressed or implied, No operational assessments have been made by DPA Auctions on this item, it has been photographed ONLY.



#333 - Bin Flashing (NP7328)

Bin Flashing (NP7328), assorted bin flashing and misc. grain parts. Notes: Item Location: Falls City, NE 68355 Equipment Sold "AS IS, WHERE IS": All equipment/property is sold "AS IS, WHERE IS" with no warranty or guarantees, expressed or implied, No operational assessments have been made by DPA Auctions on this item, it has been photographed ONLY.



#334 - Hutchinson Intermediates (NP7327)

Hutchinson Intermediates (NP7327), 6" Hutchinson intermediates and grain parts. Notes: Item Location: Falls City, NE 68355 Equipment Sold "AS IS, WHERE IS": All equipment/property is sold "AS IS, WHERE IS" with no warranty or guarantees, expressed or implied, No operational assessments have been made by DPA Auctions on this item, it has been photographed ONLY.



#335 - Pallet of Electric Motors (NP7336)

Pallet of Electric Motors (NP7336), pallet of electric motors, various HP and sizes. Notes: Item Location: Falls City, NE 68355 Equipment Sold "AS IS, WHERE IS": All equipment/property is sold "AS IS, WHERE IS" with no warranty or guarantees, expressed or implied, No operational assessments have been made by DPA Auctions on this item, it has been photographed ONLY.



#336 - Sukup Grain Heater For Parts (NP7335)

Sukup Grain Heater For Parts (NP7335), 24" Sukup heater for parts, Baldor 10-15HP electric motor. Notes: Item Location: Falls City, NE 68355 Equipment Sold "AS IS, WHERE IS": All equipment/property is sold "AS IS, WHERE IS" with no warranty or guarantees, expressed or implied, No operational assessments have been made by DPA Auctions on this item, it has been photographed ONLY.



#337 - Bin Parts & Manhole Cover (NP7337A)

Bin Parts & Manhole Cover (NP7337A), pallet of assorted grain bin parts and manhole cover, auger end cap cover. Notes: Item Location: Falls City, NE 68355 Equipment Sold "AS IS, WHERE IS": All equipment/property is sold "AS IS, WHERE IS" with no warranty or guarantees, expressed or implied, No operational assessments have been made by DPA Auctions on this item, it has been photographed ONLY.



#338 - Bin Sheets (NP7343)

Bin Sheets (NP7343), bin sheets various sizes. Notes: Item Location: Falls City, NE 68355 Equipment Sold "AS IS, WHERE IS": All equipment/property is sold "AS IS, WHERE IS" with no warranty or guarantees, expressed or implied, No operational assessments have been made by DPA Auctions on this item, it has been photographed ONLY.



#339 - Bin Sheets (NP7340)

Bin Sheets (NP7340), bin sheets various sizes. Notes: Item Location: Falls City, NE 68355 Equipment Sold "AS IS, WHERE IS": All equipment/property is sold "AS IS, WHERE IS" with no warranty or guarantees, expressed or implied, No operational assessments have been made by DPA Auctions on this item, it has been photographed ONLY.



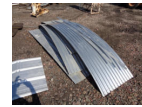
#340 - Bin Sheets (NP7338)

Bin Sheets (NP7338), bin sheets various sizes. Notes: Item Location: Falls City, NE 68355 Equipment Sold "AS IS, WHERE IS": All equipment/property is sold "AS IS, WHERE IS" with no warranty or guarantees, expressed or implied, No operational assessments have been made by DPA Auctions on this item, it has been photographed ONLY.



#341 - Bin Sheets (NP7339)

Bin Sheets (NP7339), bin sheets various sizes. Notes: Item Location: Falls City, NE 68355 Equipment Sold "AS IS, WHERE IS": All equipment/property is sold "AS IS, WHERE IS" with no warranty or guarantees, expressed or implied, No operational assessments have been made by DPA Auctions on this item, it has been photographed ONLY.



#342 - Miscellaneous Spiral Parts (NP7334A)

Miscellaneous Spiral Parts (NP7334A). Notes: Item Location: Falls City, NE 68355 Equipment Sold "AS IS, WHERE IS": All equipment/property is sold "AS IS, WHERE IS" with no warranty or guarantees, expressed or implied, No operational assessments have been made by DPA Auctions on this item, it has been photographed ONLY.



#343 - Grain & Auger Parts (NP7256)

Grain & Auger Parts (NP7256), assorted grain bin and auger parts. Notes: Item Location: Falls City, NE 68355 Equipment Sold "AS IS, WHERE IS": All equipment/property is sold "AS IS, WHERE IS" with no warranty or guarantees, expressed or implied, No operational assessments have been made by DPA Auctions on this item, it has been photographed ONLY.



#344 - Grain & Auger Parts (NP7255)

Grain & Auger Parts (NP7255), assorted grain bin and auger parts. Notes: Item Location: Falls City, NE 68355 Equipment Sold "AS IS, WHERE IS": All equipment/property is sold "AS IS, WHERE IS" with no warranty or guarantees, expressed or implied, No operational assessments have been made by DPA Auctions on this item, it has been photographed ONLY.



#345 - Grain & Auger Parts (NP7253)

Grain & Auger Parts (NP7253), assorted grain bin and auger parts, 4" hopper. Notes: Item Location: Falls City, NE 68355 Equipment Sold "AS IS, WHERE IS": All equipment/property is sold "AS IS, WHERE IS" with no warranty or guarantees, expressed or implied, No operational assessments have been made by DPA Auctions on this item, it has been photographed ONLY.



#346 - Pulleys (NP7254)

Pulleys (NP7254), assorted pulleys of various sizes. Notes: Item Location: Falls City, NE 68355 Equipment Sold "AS IS, WHERE IS": All equipment/property is sold "AS IS, WHERE IS" with no warranty or guarantees, expressed or implied, No operational assessments have been made by DPA Auctions on this item, it has been photographed ONLY.



#347 - Straight Out Heads & Parts (NP7251)

Straight Out Heads & Parts (NP7251), (2) 8" Sudenga straight out heads, tubing and misc. parts. Notes: Item Location: Falls City, NE 68355 Equipment Sold "AS IS, WHERE IS": All equipment/property is sold "AS IS, WHERE IS" with no warranty or guarantees, expressed or implied, No operational assessments have been made by DPA Auctions on this item, it has been photographed ONLY.



#348 - Pallet of Grain Parts (NP7250)

Pallet of Grain Parts (NP7250), 6" intermediates for Hutchinson auger, assorted flashing, 12" floor supports. Notes: Item Location: Falls City, NE 68355 Equipment Sold "AS IS, WHERE IS": All equipment/property is sold "AS IS, WHERE IS" with no warranty or guarantees, expressed or implied, No operational assessments have been made by DPA Auctions on this item, it has been photographed ONLY.



#349 - Auger Drive Kits & Assembly Parts (NP7257)

Pallet of Grain Parts (NP7250), 6" intermediates for Hutchinson auger, assorted flashing, 12" floor supports. Notes: Item Location: Falls City, NE 68355 Equipment Sold "AS IS, WHERE IS": All equipment/property is sold "AS IS, WHERE IS" with no warranty or guarantees, expressed or implied, No operational assessments have been made by DPA Auctions on this item, it has been photographed ONLY.



#350 - Unload Auger Kits & Parts (NP7249)

Pallet of Grain Parts (NP7250), 6" intermediates for Hutchinson auger, assorted flashing, 12" floor supports. Notes: Item Location: Falls City, NE 68355 Equipment Sold "AS IS, WHERE IS": All equipment/property is sold "AS IS, WHERE IS" with no warranty or guarantees, expressed or implied, No operational assessments have been made by DPA Auctions on this item, it has been photographed ONLY.



#351 - Poly Cone Bottom Liquid Tank (NP7242)

Poly Cone Bottom Liquid Tank (NP7242), 1,650 gallon capacity, metal stand. Notes: Item Location: Falls City, NE 68355 Equipment Sold "AS IS, WHERE IS": All equipment/property is sold "AS IS, WHERE IS" with no warranty or guarantees, expressed or implied, No operational assessments have been made by DPA Auctions on this item, it has been photographed ONLY.



#352 - Poly Cone Bottom Liquid Tank (NP7243)

Poly Cone Bottom Liquid Tank (NP7243), approx. 1,600 gallon capacity, metal stand. Notes: Item Location: Falls City, NE 68355 Equipment Sold "AS IS, WHERE IS": All equipment/property is sold "AS IS, WHERE IS" with no warranty or guarantees, expressed or implied, No operational assessments have been made by DPA Auctions on this item, it has been photographed ONLY.



#353 - Crown Poly Cone Bottom Liquid Tank (NP7244)

Crown Poly Cone Bottom Liquid Tank (NP7244), approx. 1,600 gallon capacity, metal stand. Notes: Item Location: Falls City, NE 68355 Equipment Sold "AS IS, WHERE IS": All equipment/property is sold "AS IS, WHERE IS" with no warranty or guarantees, expressed or implied, No operational assessments have been made by DPA Auctions on this item, it has been photographed ONLY.



#354 - Poly Cone Bottom Liquid Tank (NP7245)

Poly Cone Bottom Liquid Tank (NP7245), approx. 1,600 gallon capacity, metal stand. Notes: Item Location: Falls City, NE 68355 Equipment Sold "AS IS, WHERE IS": All equipment/property is sold "AS IS, WHERE IS" with no warranty or guarantees, expressed or implied, No operational assessments have been made by DPA Auctions on this item, it has been photographed ONLY.



#355 - Poly Cone Bottom Liquid Tank (NP7246)

Poly Cone Bottom Liquid Tank (NP7246), approx. 1,100 gallon capacity. Notes: Item Location: Falls City, NE 68355 Equipment Sold "AS IS, WHERE IS": All equipment/property is sold "AS IS, WHERE IS" with no warranty or guarantees, expressed or implied, No operational assessments have been made by DPA Auctions on this item, it has been photographed ONLY.



#356 - Poly Flat Bottom Liquid Tank (NP7247)

Poly Flat Bottom Liquid Tank (NP7247), approx. 1,000 gallon capacity. Notes: Item Location: Falls City, NE 68355 Equipment Sold "AS IS, WHERE IS": All equipment/property is sold "AS IS, WHERE IS" with no warranty or guarantees, expressed or implied, No operational assessments have been made by DPA Auctions on this item, it has been photographed ONLY.



#357 - Poly Cone Bottom Chemical Inductor (NP7278)

Poly Cone Bottom Chemical Inductor (NP7278), metal stand, Flomax 5 pump, Leeson electric motor. Notes: Item Location: Falls City, NE 68355 Equipment Sold "AS IS, WHERE IS": All equipment/property is sold "AS IS, WHERE IS" with no warranty or guarantees, expressed or implied, No operational assessments have been made by DPA Auctions on this item, it has been photographed ONLY.



#358 - Fiberglass Tip Tank (NP7337C)

Fiberglass Tip Tank (NP7337C), approx. 5,000 gallon capacity, single axle bumper hitch trailer, 215/75R14 tires. Notes: Tank does have a leak. Item Location: Falls City, NE 68355 Equipment Sold "AS IS, WHERE IS": All equipment/property is sold "AS IS, WHERE IS" with no warranty or guarantees, expressed or implied, No operational assessments have been made by DPA Auctions on this item, it has been photographed ONLY.



#359 - (2) Pumps & Motors (NP7322)

(2) Pumps & Motors (NP7322), (1) MP Pump and Leeson 3HP electric motor, (1) MP Pump and 10HP electric motor. Notes: Item Location: Falls City, NE 68355 Equipment Sold "AS IS, WHERE IS": All equipment/property is sold "AS IS, WHERE IS" with no warranty or guarantees, expressed or implied, No operational assessments have been made by DPA Auctions on this item, it has been photographed ONLY.



#360 - Liquid Meter (NP7252)

Liquid Meter (NP7252), Veeder-Root meter register, Tokheim Corp 682-15-AF-L-1 Controls, 40 Max G.P.M., Marathon 1/2HP electric motor, control panel. Notes: Item Location: Falls City, NE 68355 Equipment Sold "AS IS, WHERE IS": All equipment/property is sold "AS IS, WHERE IS" with no warranty or guarantees, expressed or implied, No operational assessments have been made by DPA Auctions on this item, it has been photographed ONLY.



#361 - Running Gear (NP7348)

Running Gear (NP7348), 4 wheel running gear, 12.5L-15 flotation tires. Notes: Item Location: Falls City, NE 68355 Equipment Sold "AS IS, WHERE IS": All equipment/property is sold "AS IS, WHERE IS" with no warranty or guarantees, expressed or implied, No operational assessments have been made by DPA Auctions on this item, it has been photographed ONLY.



#362 - Running Gear (NP7347)

Running Gear (NP7347), 4 wheel running gear, 12.5L-15, flotation tires. Notes: Item Location: Falls City, NE 68355 Equipment Sold "AS IS, WHERE IS": All equipment/property is sold "AS IS, WHERE IS" with no warranty or guarantees, expressed or implied, No operational assessments have been made by DPA Auctions on this item, it has been photographed ONLY.



#363 - Running Gear (NP7345)

Running Gear (NP7345), 4 wheel running gear, 11L-15, flotation tires. Notes: Item Location: Falls City, NE 68355 Equipment Sold "AS IS, WHERE IS": All equipment/property is sold "AS IS, WHERE IS" with no warranty or guarantees, expressed or implied, No operational assessments have been made by DPA Auctions on this item, it has been photographed ONLY.



#364 - Running Gear (NP7362)

Running Gear (NP7362), 4 wheel running gear, 11L-15 flotation tires. Notes: Item Location: Falls City, NE 68355 Equipment Sold "AS IS, WHERE IS": All equipment/property is sold "AS IS, WHERE IS" with no warranty or guarantees, expressed or implied, No operational assessments have been made by DPA Auctions on this item, it has been photographed ONLY.



#365 - (2) New Dalton Running Gear Tongues (NP7342)

(2) New Dalton Running Gear Tongues (NP7342). Notes: Item Location: Falls City, NE 68355 Equipment Sold "AS IS, WHERE IS": All equipment/property is sold "AS IS, WHERE IS" with no warranty or guarantees, expressed or implied, No operational assessments have been made by DPA Auctions on this item, it has been photographed ONLY.



#366 - Running Gear (NP7361)

Running Gear (NP7361), 4 wheel running gear, 12.5L-15 flotation tires. Notes: Item Location: Falls City, NE 68355 Equipment Sold "AS IS, WHERE IS": All equipment/property is sold "AS IS, WHERE IS" with no warranty or guarantees, expressed or implied, No operational assessments have been made by DPA Auctions on this item, it has been photographed ONLY.



#367 - Running Gear (NP7360)

Running Gear (NP7360), 4 wheel running gear, 11L-15 flotation tires. Notes: Item Location: Falls City, NE 68355 Equipment Sold "AS IS, WHERE IS": All equipment/property is sold "AS IS, WHERE IS" with no warranty or guarantees, expressed or implied, No operational assessments have been made by DPA Auctions on this item, it has been photographed ONLY.



#368 - Running Gear (NP7359)

Running Gear (NP7359), 4 wheel running gear, 11L-15 flotation tires (1 flat tire). Notes: Item Location: Falls City, NE 68355 Equipment Sold "AS IS, WHERE IS": All equipment/property is sold "AS IS, WHERE IS" with no warranty or guarantees, expressed or implied, No operational assessments have been made by DPA Auctions on this item, it has been photographed ONLY.



#369 - Clark Running Gear (NP7358)

Clark Running Gear (NP7358), 4 wheel running gear, 11L-15 flotation tires. Notes: Item Location: Falls City, NE 68355 Equipment Sold "AS IS, WHERE IS": All equipment/property is sold "AS IS, WHERE IS" with no warranty or guarantees, expressed or implied, No operational assessments have been made by DPA Auctions on this item, it has been photographed ONLY.



#370 - Running Gear (NP7357)

Running Gear (NP7357), 4 wheel running gear, 11L-15 flotation tires. Notes: Item Location: Falls City, NE 68355 Equipment Sold "AS IS, WHERE IS": All equipment/property is sold "AS IS, WHERE IS" with no warranty or guarantees, expressed or implied, No operational assessments have been made by DPA Auctions on this item, it has been photographed ONLY.



#371 - Running Gear (NP7356)

Running Gear (NP7356), 4 wheel running gear, 11L-15 flotation tires. Notes: Item Location: Falls City, NE 68355 Equipment Sold "AS IS, WHERE IS": All equipment/property is sold "AS IS, WHERE IS" with no warranty or guarantees, expressed or implied, No operational assessments have been made by DPA Auctions on this item, it has been photographed ONLY.



#372 - Running Gear (NP7354)

Running Gear (NP7354), 4 wheel running gear, 11L-15 flotation tires (2 front tires missing, 1 tire off rim). Notes: Item Location: Falls City, NE 68355 Equipment Sold "AS IS, WHERE IS": All equipment/property is sold "AS IS, WHERE IS" with no warranty or guarantees, expressed or implied, No operational assessments have been made by DPA Auctions on this item, it has been photographed ONLY.



#373 - Running Gear (NP7353)

Running Gear (NP7353), 4 wheel running gear, 12.5L-15 flotation tires. Notes: Item Location: Falls City, NE 68355 Equipment Sold "AS IS, WHERE IS": All equipment/property is sold "AS IS, WHERE IS" with no warranty or guarantees, expressed or implied, No operational assessments have been made by DPA Auctions on this item, it has been photographed ONLY.



#374 - Running Gear (NP7352)

Running Gear (NP7352), 4 wheel running gear, 11L-15 flotation tires. Notes: Item Location: Falls City, NE 68355 Equipment Sold "AS IS, WHERE IS": All equipment/property is sold "AS IS, WHERE IS" with no warranty or guarantees, expressed or implied, No operational assessments have been made by DPA Auctions on this item, it has been photographed ONLY.



#375 - Running Gear (NP7351)

Running Gear (NP7351), 4 wheel running gear, 12.5L-15 flotation tires. Notes: Item Location: Falls City, NE 68355 Equipment Sold "AS IS, WHERE IS": All equipment/property is sold "AS IS, WHERE IS" with no warranty or guarantees, expressed or implied, No operational assessments have been made by DPA Auctions on this item, it has been photographed ONLY.



#376 - Shop Equipment (NP7248)

Shop Equipment (NP7248), Crown pallet jack, weed eater, 230 AMP welder, box welding rods. Notes: Item Location: Falls City, NE 68355 Equipment Sold "AS IS, WHERE IS": All equipment/property is sold "AS IS, WHERE IS" with no warranty or guarantees, expressed or implied, No operational assessments have been made by DPA Auctions on this item, it has been photographed ONLY.



#377 - Parts Pallet (NP7258)

Parts Pallet (NP7258), assorted pallet of bolts and screws. Notes: Item Location: Falls City, NE 68355 Equipment Sold "AS IS, WHERE IS": All equipment/property is sold "AS IS, WHERE IS" with no warranty or guarantees, expressed or implied, No operational assessments have been made by DPA Auctions on this item, it has been photographed ONLY.



#378 - (1) Firestone Row Crop Tire/Rim (NP7296)

(1) Firestone Row Crop Tire/Rim (NP7296), size 14.9R46, 8 bolt rim pattern. Notes: Came off RoGator sprayer. Item Location: Falls City, NE 68355 Equipment Sold "AS IS, WHERE IS": All equipment/property is sold "AS IS, WHERE IS" with no warranty or guarantees, expressed or implied, No operational assessments have been made by DPA Auctions on this item, it has been photographed ONLY.



#379 - (2) Alliance Flotation Tires (NP7297)

(2) Alliance Flotation Tires (NP7297), Multi-Star 376, size 750/50R26, no rims. Notes: Came off CaseIH floater. Item Location: Falls City, NE 68355 Equipment Sold "AS IS, WHERE IS": All equipment/property is sold "AS IS, WHERE IS" with no warranty or guarantees, expressed or implied, No operational assessments have been made by DPA Auctions on this item, it has been photographed ONLY.



#380 - Tandem Axle Trailer (NP7295)

Tandem Axle Trailer (NP7295), bumper hitch, tandem axle, P215/75R16 tires (spare tire), swing door rear gate. Notes: NO TITLE. Item Location: Falls City, NE 68355 Equipment Sold "AS IS, WHERE IS": All equipment/property is sold "AS IS, WHERE IS" with no warranty or guarantees, expressed or implied, No operational assessments have been made by DPA Auctions on this item, it has been photographed ONLY.



#381 - 1972 GMC 3500 Pickup (NP7349)

1972 GMC 3500 Pickup (NP7349), gas engine, manual transmission, heat, AM radio, rear flatbed, headache rack, 33x12.50R16 rear tires, LT235/75R16 front tires, shows 6,949 miles. Notes: Truck has no battery and is a rough running truck. Item Location: Falls City, NE 68355 Equipment Sold "AS IS, WHERE IS": All equipment/property is sold "AS IS, WHERE IS" with no warranty or guarantees, expressed or implied, No operational assessments have been made by DPA Auctions on this item, it has been photographed ONLY.



#382 - Oakridge Shadow Shingles (NP7326)

Oakridge Shadow Shingles (NP7326), asphalt fiberglass shingles. Notes: Item Location: Falls City, NE 68355 Equipment Sold "AS IS, WHERE IS": All equipment/property is sold "AS IS, WHERE IS" with no warranty or guarantees, expressed or implied, No operational assessments have been made by DPA Auctions on this item, it has been photographed ONLY.



#383 - Service Body (NP7299)

Service Body (NP7299), 6 door service body. Notes: Item Location: Falls City, NE 68355 Equipment Sold "AS IS, WHERE IS": All equipment/property is sold "AS IS, WHERE IS" with no warranty or guarantees, expressed or implied, No operational assessments have been made by DPA Auctions on this item, it has been photographed ONLY.



#384 - NEW Merritt Tandem Axle Fenders (NP7321)

NEW Merritt Tandem Axle Fenders (NP7321), fender full 105" DBL RAD, never been mounted on a truck. Notes: Item Location: Falls City, NE 68355 Equipment Sold "AS IS, WHERE IS": All equipment/property is sold "AS IS, WHERE IS" with no warranty or guarantees, expressed or implied, No operational assessments have been made by DPA Auctions on this item, it has been photographed ONLY.



#385 - Truck Axle (NP7325)

Truck Axle (NP7325), spring suspension, 10.00R20 tires, good tread. Notes: Item Location: Falls City, NE 68355 Equipment Sold "AS IS, WHERE IS": All equipment/property is sold "AS IS, WHERE IS" with no warranty or guarantees, expressed or implied, No operational assessments have been made by DPA Auctions on this item, it has been photographed ONLY.



#386 - Shelves of Parts (NP7344)

Shelves of Parts (NP7344), shelves of misc grain parts, tractor hitch, cable chain. Notes: Item Location: Falls City, NE 68355 Equipment Sold "AS IS, WHERE IS": All equipment/property is sold "AS IS, WHERE IS" with no warranty or guarantees, expressed or implied, No operational assessments have been made by DPA Auctions on this item, it has been photographed ONLY.



#387 - Personnel Carrier (TR6001)

Personnel Carrier (TR6001), personnel carrier 65 hp-V4 Wisconsin. Notes: Item Location: Good Hope, IL 61438 Equipment Sold "AS IS, WHERE IS": All equipment/property is sold "AS IS, WHERE IS" with no warranty or guarantees, expressed or implied, No operational assessments have been made by DPA Auctions on this item, it has been photographed ONLY.



#388 - Personnel Carrier (TR6002)

Personnel Carrier (TR6002), personnel carrier 65 hp-V4 Wisconsin. Notes: Item Location: Good Hope, IL 61438 Equipment Sold "AS IS, WHERE IS": All equipment/property is sold "AS IS, WHERE IS" with no warranty or guarantees, expressed or implied, No operational assessments have been made by DPA Auctions on this item, it has been photographed ONLY.



#389 - Personnel Carrier (TR6003)

Personnel Carrier (TR6003), personnel carrier 65 hp-V4 Wisconsin. Notes: Item Location: Good Hope, IL 61438 Equipment Sold "AS IS, WHERE IS": All equipment/property is sold "AS IS, WHERE IS" with no warranty or guarantees, expressed or implied, No operational assessments have been made by DPA Auctions on this item, it has been photographed ONLY.



#390 - Personnel Carrier (TR6004)

Personnel Carrier (TR6004), personnel carrier 65 hp-V4 Wisconsin. Notes: Item Location: Good Hope, IL 61438 Equipment Sold "AS IS, WHERE IS": All equipment/property is sold "AS IS, WHERE IS" with no warranty or guarantees, expressed or implied, No operational assessments have been made by DPA Auctions on this item, it has been photographed ONLY.



#391 - Personnel Carrier (TR6005)

Personnel Carrier (TR6005), personnel carrier 65 hp-V4 Wisconsin. Notes: Item Location: Good Hope, IL 61438 Equipment Sold "AS IS, WHERE IS": All equipment/property is sold "AS IS, WHERE IS" with no warranty or guarantees, expressed or implied, No operational assessments have been made by DPA Auctions on this item, it has been photographed ONLY.

